

## RESEARCH

# Lessons learnt from the use of compartmental models over the COVID-19 induced lockdown in France

Romain Gauchon<sup>1\*†</sup>, Nicolas Ponthus<sup>2†</sup>, Catherine Pothier<sup>3</sup>, Christophe Rigotti<sup>3,4</sup>, Vitaly Volpert<sup>4,5</sup>, Stéphane Derrode<sup>6</sup>, Jean-Pierre Bertoglio<sup>7</sup>, Alexis Bienvenue<sup>1</sup>, Pierre-Olivier Goffard<sup>1</sup>, Anne Eyraud-Loisel<sup>1</sup>, Simon Pageaud<sup>3,8</sup>, Jean Iwaz<sup>8</sup>, Stéphane Loisel<sup>1</sup> and Pascal Roy<sup>8,9^</sup>

### Abstract

**Background:** Compartmental models may help deciding on public health interventions. They were used during the first French COVID-19 lockdown to estimate the reproduction numbers and predict the number of hospital beds required. This study aimed to assess the ability of similar compartmental models to reflect equivalent epidemic dynamics.

**Methods:** The study considered three compartmental models independently designed to describe the COVID-19 outbreak in France. These models were scrutinized and their compartments and parameters expressed in a common framework. The parameters were set alike in the three models according to values taken from the literature. The models were calibrated using a common maximum likelihood function and the same hospitalization data taken from two official public databases. The calibration procedure was repeated over three different periods to compare model abilities to (1) fit over the whole lockdown; (2) predict the course of the epidemic during the lockdown; and, (3) provide a set of profiles to forecast the hospitalization prevalence after the lockdown. The study considered national and regional coverages.

**Results:** The three models were all flexible enough to match hospitalization data during the lockdown, but the numbers of cases in the other compartments differed. The three models failed to predict reliably the number of hospitalizations after the fitting periods at national and regional levels. At the national scale, a refined calibration led to epidemic course profiles that reflected hospitalizations dynamics and corresponded to reproduction numbers coherent with official and literature estimates. This result could not be consistently obtained at the regional scale.

**Conclusion:** Not all predictions were consistent between models. Even over the period used for calibration by fitting to hospitalization cases, important differences remained regarding the prevalence in the other compartments. Prevalence data are needed to further constrain the calibration and perform selection between still divergent models. This underlines strongly the need for repeated prevalence studies on representative samples, stratified by age and regions, which would undergo virological or serological tests.

**Keywords:** compartmental model; infection dynamics; prevalence; COVID-19

\*Correspondence: [romain.gauchon@laposte.net](mailto:romain.gauchon@laposte.net)

<sup>1</sup>Université de Lyon, F-69000, Lyon, France; Université Claude Bernard Lyon 1, Laboratoire de Sciences Actuarielle et Financière (LSAF), Institut de Science Financière et d'Assurances (ISFA), F-69007, Lyon, France

Full list of author information is available at the end of the article

## 1 Background

The COVID-19 coronavirus outbreak is causing a major national, European, and international health crisis,

<sup>†</sup>Equal contributor, order is alphabetical. <sup>^</sup>For the group CovDyn (Covid Dynamics). Members of the group are listed at the end of the document.

with serious consequences in terms of public health. The COVID-19 epidemic started in China in late autumn 2019 and on December 31, the WHO China Country Office [1] received reports of severe pneumonia cases in the city of Wuhan (Hubei Province). The magnitude of the epidemic (currently more than one million officially recognized deaths worldwide) has led to exceptional reactions from different countries around the world. Due to the early outbreak in Italy, Europe has been one of the most severely hit continents. According to worldometers, the continent (including Russia) counts now more than 290 000 coronavirus-related deaths. On March 9, 2020, the Italian government started and most European countries followed, albeit with some variations between countries.

In France, the lockdown began officially on March 17 at noon, although some measures, such as restaurant closure, occurred days before that date. During the lockdown, individuals could leave home only for individual physical activity, work, essential goods, or medical reasons. Thus, the social behavior changed drastically resulting in a drop of  $R_0$  coefficient (i.e., the average number of people infected by a single infected person). As the national situation improved, the lockdown was lifted on May 12, resulting in a change in the contact matrix. The unprecedented implementation of a lockdown system stimulated research in epidemics modeling. Epidemiologists investigated the impact of the lockdown in France (e.g., see [2, 3, 4]) through compartmental models. The main goal was to provide public authorities decision-making tools. Assessing the way these models perform regarding the COVID-19 pandemic and differences between them is essential to check their reliability and usefulness in case of future waves.

One peculiarity of COVID-19 outbreak is the limited amount of data available for epidemic modeling. This is due to many factors such as the asymptomatic form of the disease that represents a non-negligible percentage of cases. This motivated a number of analyses aimed at predicting the consequences of the pandemic on hospital activities (occupation of hospital and intensive care unit beds) and in terms of COVID-19-linked hospital death toll. Compartmental models were then fitted using only hospital source data and other literature parameters to calibrate non-observed compartments.

This study aims to assess the statistical properties of three different compartmental models designed to describe the COVID-19 outbreak in France. These models were proposed by research teams from University of

Bordeaux (Prague et al. [5]), INSERM (Di Domenico et al. [6]), and EHESP (Roux et al. [7]). The abilities of these models to describe the dynamics of the epidemic before and during lockdown (phases I and II) and predict these dynamics after the lockdown (phase III) according to each of the three models under several hypotheses. Because these models have major structural differences, the study compared also the impacts of these differences on the epidemic dynamics.

## 2 Data and methods

### 2.1 Data

Two different French public databases were used. The main one was the database of Santé Publique France (SPF, available on [data.gouv.fr](https://data.gouv.fr)). Since March 18, this database provides aggregate information on a day-to-day basis about every patient hospitalized in a private or public hospital, including age (or age group), sex and, most importantly, the daily number of new COVID-19 cases admitted and number of occupied hospital beds. This SPF's database includes no data previous to March 18. Thus, data from the "Surveillance sanitaire des urgences et des décès" (SurSaUD) database were used as complement. SurSaUD is a French health monitoring system that started recording information on patients with COVID-19 symptoms who visited hospital emergency units since February 24. However, this database covers only 86% of emergency health units. This underestimation was corrected using the process proposed by Salje et al. [2]: the daily ratio of SPF to SurSaUD number of cases was calculated between March 18 and March 27, and the median of these values was then used to estimate and correct SurSaUD data<sup>[1]</sup>. The SurSaUD database was used to estimate the number of patients hospitalized on March 2 (starting date of modeling) as well as the dynamics of the epidemic from March 8 to March 18 (i.e., phase I, before lockdown).

### 2.2 Statistical modelling

#### 2.2.1 Adapted models

*Modeling the disease contagiousness* To take into account possible differences in contagiousness between young and old people, the population was divided into

<sup>[1]</sup>Originally, Salje et al. used all data available, but their method appeared empirically to be less accurate than the method chosen here.

$n$  age groups. For a given age group  $i$ , at a given time  $t$ , the incidence hazard rate  $\alpha_t^i$  was calculated as follows:

$$\alpha_t^i = \beta_1 \beta_{2,t} \sum_{j=1}^n \left[ C_{i,j} \sum_{Z \in \{E, I_p, A, I, \dots\}} i_Z \frac{Z_t^j}{N_{tot}^j} \right]. \quad (1)$$

In this equation,

- $C$  is the contact matrix within which  $C_{i,j}$  is the average number of individuals from age group  $j$  encountered per day by a single individual from age group  $i$ ;
- $Z_t^j$  is the number of individuals of age group  $j$  in compartment  $Z$  at time  $t$ ;
- $N_{tot}^j$  is the total number of individuals from age group  $j$  (who contracted the disease or not);
- Thus, the term into brackets is the daily average number of infected individuals of age group  $j$  who came into contact with one individual of age group  $i$ ;
- $i_Z$  is the relative infectivity of individuals in compartment  $Z$ . When individuals in compartment  $Z$  are not contagious (e.g., if they have not contracted the disease yet), then  $i_Z = 0$ . Some compartments, such as the one relative to asymptomatic subjects, could have a relative infectivity ranging between 0 and 1;
- $\beta_1$  is the daily incidence hazard rate in case of one daily contact with a contagious person (the parameter is estimated for a standard duration contact);
- The relative hazard  $\beta_{2,t}$  estimates the effect of lockdown by reducing the mean number of daily contacts, and/or the mean duration of contacts, and/or their infectivity under barrier measures.

In the case of a single age group, Equation 1 becomes:

$$\alpha_t = \beta_1 \beta_{2,t} C \sum_{Z \in \{E, I_p, A, I, \dots\}} i_Z \frac{Z_t}{N_{tot}}, \quad (2)$$

where  $C$  is the mean number of daily contacts.

**Lockdown** In France, the lockdown started on March 17 at noon and ended on May 10 at midnight. During this period, individuals could go out to work, buy essential goods, seek medical care, or practice an individual sports activity. The daily incidence hazard rate decreased ( $\beta_{2,t} < 1$ , see Equation (1)) leading to a drop in the basic reproduction number  $R_0$ . Given a starting date of the

model at  $t = 0$ , let  $T_b$  and  $T_e$  be the times of the beginning<sup>[2]</sup> and end of the lockdown respectively. After the beginning of the lockdown,  $\beta_{2,t}$  was assumed to change linearly<sup>[3]</sup> over time until reaching a plateau at time  $T_c$ . After the end of the lockdown,  $\beta_{2,t}$  was assumed to change linearly again, until reaching a new plateau at time  $T_p$ . The relative hazard  $\beta_{2,t}$  verifies

$$\beta_{2,t} = \begin{cases} 1 & \forall t < T_b, \\ 1 + (\beta_{2,T_c} - 1) \frac{t - T_b}{T_c - T_b} & \forall t \in [T_b, T_c[, \\ \beta_{2,T_c} & \forall t \in [T_c, T_e[, \\ \beta_{2,T_c} + (\beta_{2,T_p} - \beta_{2,T_c}) \frac{t - T_e}{T_p - T_e} & \forall t \in [T_e, T_p[, \\ \beta_{2,T_p} & \forall t \geq T_p, \end{cases} \quad (3)$$

with  $T_b \leq T_c \leq T_e \leq T_p$ . In this framework,  $T_c$  and  $\beta_{2,T_c}$  had to be estimated<sup>[4]</sup>. A sudden fall of  $\beta_{2,t}$  would have led to a discontinuity in the daily infection rate and, consequently, to a discontinuity in the number of daily hospitalizations. Such a discontinuity was not observed. The smooth change in the number of daily hospitalizations seemed related to a continuous change in  $\beta_2$  and, consequently,  $R_0$ . Term  $\beta_{2,T_c}$  is allowed to vary with the area modeled.

**SEIRAH model** This model (herein noted SEIRAHm) was adapted from Prague et al. [5]. This model was the simplest of all three models considered because it did not consider age. Thus, no contact matrix was considered.

The model consisted of six compartments:

- $S$  (Susceptible): individuals who were not infected by the virus;
- $E$  (Exposed): individuals who contracted the virus. This compartment corresponds to disease incubation and individuals were supposed not to be infectious. Individuals in this class become either asymptomatic virus carriers (with probability  $p_A$ ), or symptomatic carriers (with probability  $1 - p_A$ );

<sup>[2]</sup>The lockdown began on March 17 at noon, which resulted in a large movement of populations in the morning. We assume thus that the lockdown started on March 18.

<sup>[3]</sup>The case of a sudden change of  $\beta_{2,t}$  at a time  $T_c$  was also tested. However, this did not change any of the conclusions of the paper.

<sup>[4]</sup>For the choice of  $T_p$  and  $\beta_{2,T_p}$ , please see 2.2.3.

- (Infected): individuals who presented disease symptoms without being hospitalized. These individuals become either hospitalized patients (with probability  $p_H$ ), or Removed (with probability  $1 - p_H$ );
- $R$  (Removed): this compartment groups together individuals cured or deceased from the disease;
- $A$  (Asymptomatic): individuals who completed the incubation period, became infectious, but had no disease symptoms. Unlike population in compartment  $I$ , this population had no cough, fever, etc. The relative infectivity of these asymptomatic individuals was estimated at  $i_A$ ;
- $H$  (Hospitalized): hospitalized individuals, (ICU or else). Since COVID-19 patients were usually isolated at hospital admission, their infectivity was fixed at zero though this was not entirely true (they could infect their caregivers).

A synthetic view of this model is shown in Figure 1a, and the parameters are summarized in Appendix A.2. The dynamics of the model was given by Equation system (4).

$$\left\{ \begin{array}{l} \frac{dS}{dt} = -\alpha_t^{SEI} S, \\ \frac{dE}{dt} = \alpha_t^{SEI} S - \frac{1}{t_i} E, \\ \frac{dI}{dt} = \frac{1-p_A}{t_i} E - \frac{p_H}{t_{bh}} I - \frac{1-p_H}{t_s} I, \\ \frac{dR}{dt} = \frac{1-p_H}{t_s} I + \frac{1}{t_s} A + \frac{1}{t_h} H, \\ \frac{dA}{dt} = \frac{p_A}{t_i} E - \frac{1}{t_s} A, \\ \frac{dH}{dt} = \frac{p_H}{t_{bh}} I - \frac{1}{t_h} H. \end{array} \right. \quad (4)$$

This model has two differences with the original model of Prague et al.: i) the addition of a probability for hospitalization; and, ii)  $t_{bh}$  was not estimated but fixed at a value taken from [2]. Not estimating  $t_{bh}$  allowed a fair comparison with INSERMm and EHESpm. Thus, the three models had the same number of inferred parameters (see Appendix A.3). A compartment between  $I$  and  $R$  could be created to allow for an average time spent by non-hospitalized symptomatic individuals in compartment  $I$  (similar to the compartment  $I_{nh}$  in EHESpm), but this was not done to keep the model close to the original one. Parameter  $\alpha_t^{SEI}$  was obtained from Equation (2).

Here, according to [8] the average daily number of contact  $C$  in France was equal to 12. Originally, in [5], compartment  $I$  was supposed to include individuals tested positive and compartment  $A$  to include all other infected but not tested cases.

This model was originally fitted to both incidence in  $H$  and incidence of new tested cases in  $I$  using Poisson distributions to model the likelihood.

**INSERM model** This model (herein noted INSERMm) was adapted from the model described in [6]. It is a compartmental model stratified by age groups. For each age group, the structure shown in Figure 1b leads to the following system of differential equations:

$$\left\{ \begin{array}{l} \frac{dS}{dt} = -\alpha^{INSERM} S, \\ \frac{dE}{dt} = \alpha^{INSERM} S - \frac{1}{t_i - t_p} E, \\ \frac{dI_p}{dt} = \frac{1}{t_i - t_p} E - \frac{1}{t_p} I_p, \\ \frac{dA}{dt} = \frac{p_A}{t_p} I_p - \frac{1}{t_s} A, \\ \frac{dI_{ps}}{dt} = \frac{(1-p_A)p_{I_{ps}}}{t_p} I_p - \frac{1}{t_s} I_{ps}, \\ \frac{dI_{ms}}{dt} = \frac{(1-p_A)p_{I_{ms}}}{t_p} I_p - \frac{1}{t_s} I_{ms}, \\ \frac{dI_{ss}}{dt} = \frac{(1-p_A)p_H}{t_p} I_p - \frac{1}{t_{bh}} I_{ss}, \\ \frac{dH}{dt} = \frac{(1-p_{ICU})}{t_{bh}} I_{ss} - \frac{1}{t_h} H, \\ \frac{dICU}{dt} = \frac{p_{ICU}}{t_{bh}} I_{ss} - \frac{1}{t_{icu}} ICU, \\ \frac{dR}{dt} = \frac{1}{t_s} (I_{ps} + I_{ms} + A) + \\ \quad \frac{1-p_{D|H}}{t_h} H + \frac{1-p_{D|ICU}}{t_{icu}} ICU, \\ \frac{dD}{dt} = \frac{p_{D|H}}{t_h} H + \frac{p_{D|ICU}}{t_{icu}} ICU. \end{array} \right. \quad (5)$$

The  $\alpha^{INSERM}$  parameter was obtained from Equation (1). The compartments of this model and the differences with SEIRAHm are the following:

- $S$  (Susceptible): individuals who were not infected by the virus (same as  $S$  in SEIRAHm);

- Unlike the SEIRAHm, the incubation period included two contiguous compartments:
  - $E$  (Exposed): infected individuals who did not develop symptoms and were not contagious;
  - $I_p$  (Prodromic<sup>[5]</sup> phase): individuals still in the incubation period without apparent symptoms but already contagious.

The average time spent in compartment  $E$  in SEIRAHm is thus equal to the sum of the average times spent in compartments  $E$  and  $I_p$  of INSERMm<sup>[6]</sup>;

- The symptomatic infectious period included three compartments:
  - $I_{ps}$  (Paucisymptomatic disease): individuals with weak disease symptoms;
  - $I_{ms}$  (Medium symptoms): individuals with disease symptoms (e.g., fever or cough) who did not require hospitalization;
  - $I_{ss}$  (Severe symptoms): individuals severely infected who required hospitalization; the probability of going into this compartment was equal to  $p_H$ .

Compartment  $I$  of SEIRAHm was thus analogous to the sum of compartments  $I_{ps}$ ,  $I_{ms}$  and  $I_{ss}$  of INSERMm.

- In this model, there are two absorbing compartments:
  - $D$  (Deceased at hospital): This compartment had no equivalent in SEIRAHm. The benefit from considering only hospital deaths was motivated by the availability of these data;
  - $R$  (Removed): individuals who recovered or died from the disease out of hospital.

Compartment  $R$  of SEIRAHm is thus analogous to the sum of compartments  $R$  and  $D$  of INSERMm;

- $A$  (Asymptomatic): individuals who completed the incubation period, became infectious, but had no disease symptoms (same as in SEIRAHm);
- The hospitalization period included two compartments:
  - $ICU$  (Intensive Care Units): individuals treated at any time in an ICU; here, it includes both pre- and post-ICU periods;

- $H$  (Hospitalized): individuals hospitalized without requiring ICU care.

Compartment  $H$  of SEIRAHm is analogous to the sum of compartments  $H$  and  $ICU$  of INSERMm.

INSERMm was originally developed with three age groups [6]. To obtain results easy to compare with those of EHESPM, it was implemented with 17 age groups. To allow comparisons between models, all common parameters were defined the same way. This implied some changes to the original model [6] (e.g., to obtain one parameter for each of the 17 age groups instead of 3 in the original model). In particular:

- In INSERMm [6], the average times spent in compartments  $A$ ,  $I_{ps}$ ,  $I_{ms}$ , and  $I_{ss}$  were considered equal. Here, the average time for compartment  $I_{ss}$  was set to  $t_{bh}$  denoting the time before hospitalization.
- The allocation of infected individuals between compartments  $I_{ps}$  and  $I_{ms}$  was not used when comparing this model results to those of other models. Therefore,  $p_{I_{ps}}$  and  $p_{I_{ms}}$  were arbitrarily and respectively fixed to one quarter and three quarters of  $(1 - p_H)$ ;
- The original model [6] used different hazard rates for transitions from compartments  $H$  and  $ICU$  to compartments  $R$  and  $D$ . Here, only two average times were used ( $t_h$  and  $t_{icu}$ ).

The Next Generation Matrix approach proposed by Diekmann et al. [9] was applied to calculate the basic reproduction number for this model (for more details, see Appendix A.4).

Originally, in [6], this model was fitted to the incidence in compartment  $H$  using a Poisson distribution to model the likelihood.

**EHESPM model** This model (herein noted EHESPM) was proposed by Roux et al. [7]. It is described here by Figure 1c and Equation system (6).

<sup>[5]</sup>The short phase following contamination without pathological symptoms but with possible non-specific prodromes.

<sup>[6]</sup>The presence of a prodromic compartment implied that the average time during which an individual is infectious was higher in INSERMm than in SEIRAHm.



$$\left\{ \begin{array}{l} \frac{dS}{dt} = -\alpha_t^{EHESP} S, \\ \frac{dE}{dt} = \alpha_t^{EHESP} S - \frac{1-p_A}{t_i-t_p} E - \frac{p_A}{t_i-t_p} E, \\ \frac{dA}{dt} = \frac{p_A}{t_i-t_p} E - \frac{1}{t_s+t_p} A, \\ \frac{dI_p}{dt} = \frac{1-p_A}{t_i-t_p} E - \frac{1}{t_p} I_p, \\ \frac{dI}{dt} = \frac{1}{t_p} I_p - \frac{p_H}{t_{bh}} I - \frac{1-p_H}{t_{bh}} I, \\ \frac{dH}{dt} = \frac{p_H}{t_{bh}} I - \frac{1}{t_h} H, \\ \frac{dI_{nh}}{dt} = \frac{1-p_H}{t_{bh}} I - \frac{I_{nh}}{t_s-t_{bh}}, \\ \frac{dR}{dt} = \frac{1}{t_s+t_p} A + \frac{1}{t_s-t_{bh}} I_{nh} + \frac{1}{t_h} H. \end{array} \right. \quad (6)$$

The  $\alpha_t^{EHESP}$  parameter is given by Equation (1). As INSERMm, EHESPM may be considered as a sophisticated version of SEIRAHm. The compartments and the differences are the following:

- $S$  (Susceptible): individuals who were not infected by the virus (same as in SEIRAHm);
- The incubation period included two compartments as in INSERMm but contrary to SEIRAHm:
  - $E$  (Exposed): infected individuals who did not develop symptoms and were not contagious;
  - $I_p$  (Prodromic phase): individuals still in the incubation period without apparent symptoms but already contagious.

The average time spent in compartment  $E$  of SEIRAHm was thus equal to the sum of the average times spent in compartments  $E$  and  $I_p$  in EHESPM;

- The symptomatic infectious phase included two compartments:
  - $I$  (Infected): symptomatic individuals still at an early stage of the disease;
  - $I_{nh}$  (Infected non-hospitalized): symptomatic individuals who did not need hospitalization;

Compartment  $I$  of SEIRAHm was thus analogous to the sum of compartments  $I$  and  $I_{nh}$  of EHESPM. However, there was a small but interesting difference between the two models: SEIRAHm supposed implicitly that an individual could go to hospital at any time, whereas EHESPM supposed implicitly that when an individual has been ill for some (long)

time, he/she would not go to hospital, even in case of worsening of symptoms (he/she would then stay artificially in compartment  $I_{nh}$ );

- $R$  (Removed): groups together individuals cured or died from the disease (same as in SEIRAHm);
- $A$  (Asymptomatic): individuals who completed the incubation period, became infectious, but had no disease symptoms (same as in SEIRAHm);
- $H$  (Hospitalized): same compartment as in SEIRAHm.

Originally, in [7], this model was fitted on both incidence and prevalence data of compartment  $H$  using respectively a negative binomial distribution and a Poisson distribution to model the likelihood.

### 2.2.2 Supplementary material

Other technical details are presented in Appendix A, which is organized as follows.

- Appendix A.1 details the initialization process. In this process, only one compartment by model was automatically estimated during the calibration process: the number of individuals at date  $t = 0$  in compartment  $E$ . Other compartments were initialized using SurSaUD data and exploiting the properties of the models. All models were assumed to start on March 2, 2020.
- Appendix A.2 summarizes the notations, values, and references of the parameters taken from the literature.
- Appendix A.3 describes the estimation process used for model calibration.
- Appendix A.4 details the method used to compute  $R_0$  and  $R_e$ . The theory is recalled and illustrated with the three models.

### 2.2.3 The modelling strategy

The modelling strategy is organized around three main research axes presented respectively in the next three paragraphs. A unified simple approach based on the maximum likelihood was applied to the three models to fit the changes in prevalent hospitalized cases.

The respective abilities of the three models to describe the dynamics of the epidemic during the whole lockdown period was analyzed by comparing the observed numbers of hospitalized patients with the numbers in compartment  $H$  of SEIRAHm and EHESPM as well as with the sum in compartments  $H$  and  $ICU$  of INSERMm. The maximum

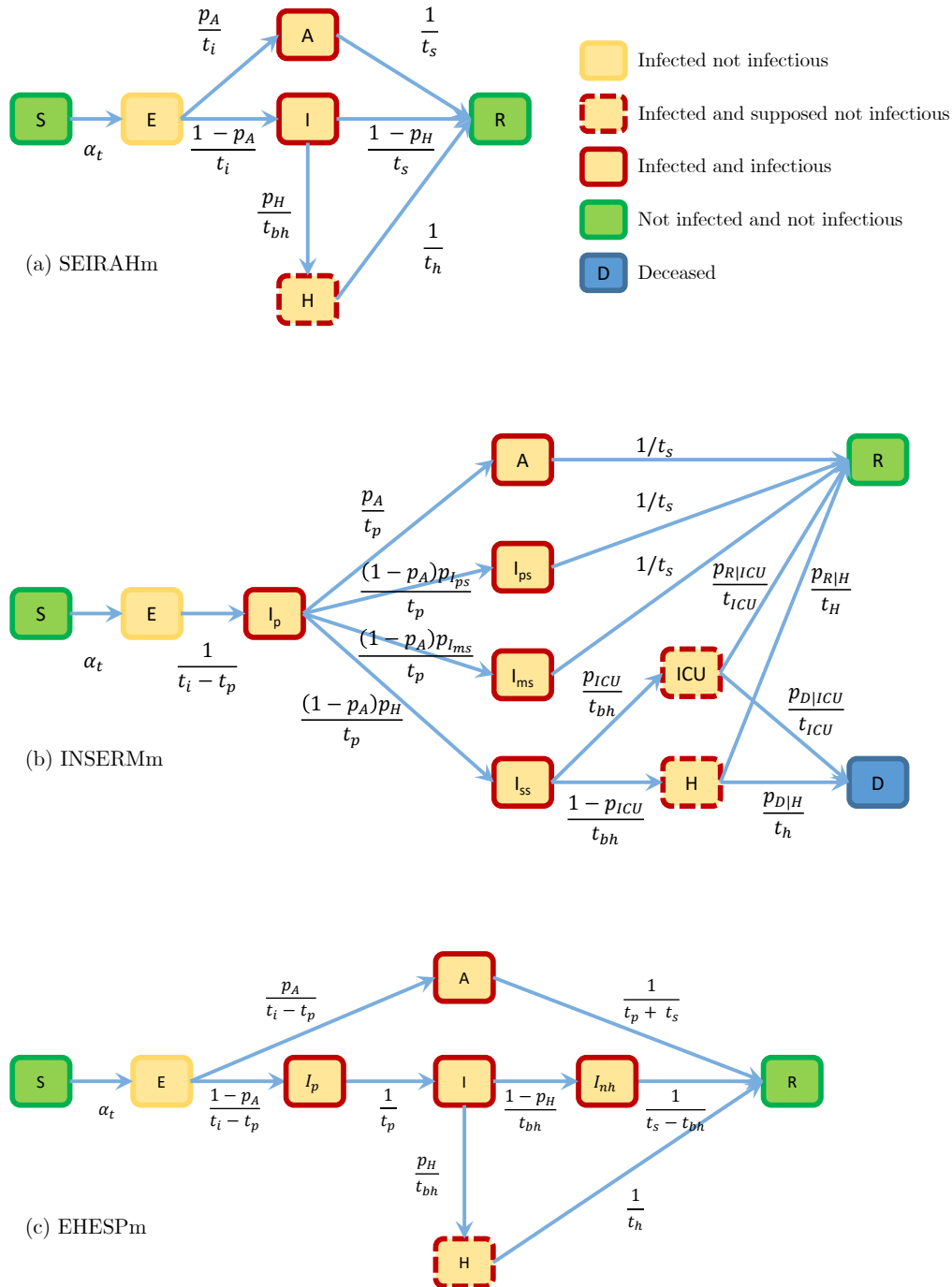


Figure 1: Diagrams of the models.

likelihood estimates of the parameters of the three models were obtained by fitting the daily numbers of prevalent hospitalized cases recorded in SPF database during the whole lockdown period (from March 18 to May 11, 2020, F-WL approach: fit over the whole lockdown). The predicted daily incident hospitalized cases (not used to fit the models) were graphically compared with the observed ones. Although the corresponding observed numbers were not available, the predicted daily numbers of patients in compartments  $E$ ,  $I$  and  $R$  were compared between the three models. Moreover, the French government published daily the number of beds occupied by COVID-19 patients and the number of COVID-19 deaths at hospital. Because INSERMm has  $ICU$  and  $D$  compartments, joint changes of fitted vs. observed numbers in these two compartments were compared in this model only.

The abilities of the three models to predict the course of the epidemic during the lockdown period was analyzed by fitting the models on the numbers of hospitalized patients in the SPF database at the start of the lockdown (March 18 to April 6, F-SL approach: fit at start of lockdown). The predictions of the models for period April 7 to May 11 were then compared to the observed data.

The dynamics of the epidemic as predicted by the three models after the lockdown were compared to the observed data for different values of  $R_0$ . Parameter  $\beta_{2,t}$  was supposed to change linearly from May 11 to June 2. The study computed with each model the values of  $\beta_{2,t}$  that correspond to 15 values of  $R_0$  ranging from 0.1 to 1.5 by 0.1 increments as well as the corresponding profile likelihood. The predicted change in the  $R_0$  that fitted the best the observed data over a one-month period (May 11 to June 10) according to the maximum likelihood was then retained. Two approaches were compared. In the first, model parameters were estimated by fitting all lockdown data (March 18 to May 11, F-WL approach). In the second, parameters  $E_0$  and  $\beta_1$  were estimated using the corrected SurSaUD database from March 8 to March 18. The objective was to estimate the parameters not linked to the lockdown with data previous to the lockdown. Then, the last two parameters ( $T_c$  and  $\beta_{2,T_c}$ , from Equation (3)) were estimated using SPF data from May 1 to May 11, which were almost not influenced by the number of individuals infected before the lockdown and thus gave more accurate estimates of the parameters resulting from the lockdown. This fit of the epidemic process restricted to the end of the lockdown was intended to provide more

accurate estimates of  $\beta_{2,T_p}$ . Estimates of  $R_0$  and  $R_e$  with the second approach (herein F-ALEL: fit ante lockdown and end of lockdown) at the end of the lockdown were computed (as described in Appendix A.4) and compared with those found in the literature.

The three main axes were illustrated for whole France and four regions: Auvergne-Rhône-Alpes (ARA), Île de France (IDF), Grand Est (GE), and Nouvelle Aquitaine, Occitanie, and Provence-Alpes Côte d'Azur (SUD).

### 3 Results

The mains results for whole France are presented herein, whereas complementary results are available in Appendix B.

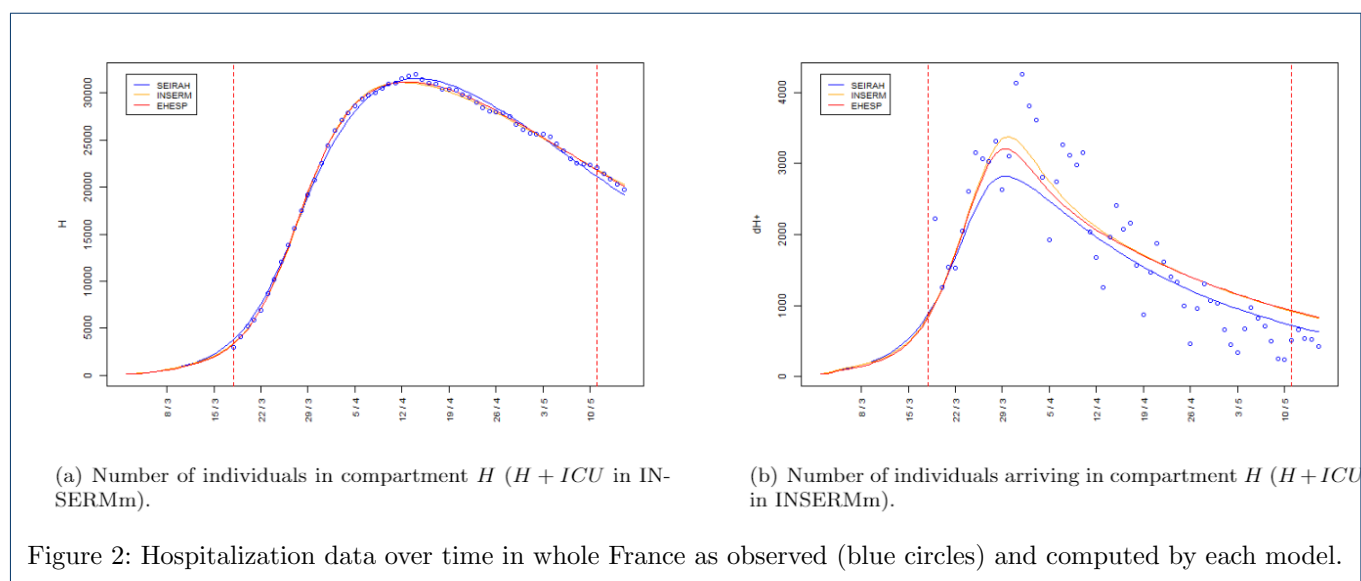
In each Figure, the vertical red dotted line represents the date of lockdown and the vertical blue dotted line the limit dates used for parameter calibration when they differed from the lockdown dates.

#### 3.1 Description of the epidemic during the whole lockdown period

At the national level, the fit of the three models on case prevalence data in the compartment  $H$  ( $H + ICU$  in INSERMm) was good (Figure 2a). The three models described quite accurately the daily numbers of individuals in compartment  $H$ . However, the adequacy between the daily number of individuals arriving to compartment  $H$  and the observed data published by SPF differed in various ways depending on the model considered (Figure 2b). With SEIRAHm, the estimated daily number of individuals arriving to compartment  $H$  reached its maximum before (and at a lower level) the two other models. The results with SEIRAHm were less accurate at mid-lockdown but more accurate at end of lockdown, whereas EHESpm and INSERMm overestimated the incidence of hospitalization. Parameters  $E_0$  and  $\beta_2$ , as estimated by SEIRAHm model, were smaller than those estimated by EHESpm or INSERMm (Table B.1 in Appendix B.1). On the contrary, parameter  $\beta_1$  was higher with SEIRAHm than with the two other models.

The three models provided similar results regarding the daily prevalent numbers of individuals in compartment  $H$ , but not regarding compartments  $A$ ,  $I$ ,  $E$ , or  $R$  (see the curves for the compartments  $I$ ,  $E$ , and  $R$  in Figure B.1, Appendix B). Despite an apparent equivalence, there were much less individuals in compartment  $I$  with



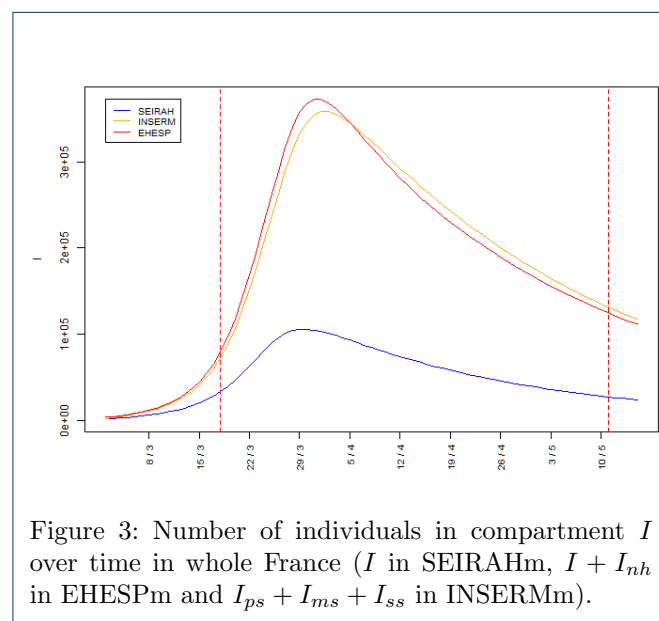


SEIRAHm than in compartments  $I + I_{nh}$  with EHESpm or  $I_{ps} + I_{ms} + I_{ss}$  compartments with INSERMm (Figure 3). Similarly, the cumulative number of removed individuals in compartment  $R$  ( $R + D$  in INSERMm) was much higher with INSERMm and EHESpm than with SEIRAHm. The numbers in compartment  $D$ , as predicted by INSERMm, were accurate vs. the official numbers published by the French government; however, the predicted prevalence for compartment  $ICU$  was almost twice higher than the observed one (Figure B.2 in Appendix B).

The results obtained for compartments  $H$ ,  $E$ ,  $I$ , and  $R$  at a regional scale were similar to those obtained at the national scale (Figure B.1, Appendix B). Estimated parameter  $\beta_1$  was always lower but parameter  $\beta_2$  was always higher with SEIRAHm vs. EHESpm or INSERMm. Estimated parameter  $E_0$  with SEIRAHm was often very different from the one estimated with the two other models, but it could be higher (regions ARA and SUD) or lower (regions IDF and GE). With the exception of GE (and, to a lesser extent, IDF), parameters  $T_c$  were close with the three models. All parameters estimated for the INSERMm and EHESpm were generally similar.

### 3.2 Prediction of hospitalizations during the lockdown period

When the three models fitted the numbers of hospitalized patients as provided by SPF at the start of the



lockdown (March 18 to April 6, 2020, F-SL approach), the national predictions for period April 7 to May 11 showed a strong overestimation of hospitalization prevalence with INSERMm and EHESpm but a satisfactory estimation with SEIRAHm (Figure 4). The overestimation was associated with a delay in the peak of the prevalence of hospitalized cases. The estimated number of individuals in compartment  $E_0$  at start of modelling was

also three times lower with SEIRAHm than with the two other models (Table B.2). However, parameter  $\beta_1$  was much higher with SEIRAHm than with the two others and barely higher with EHESpm than with INSERMm. Parameter  $\beta_{2,T_c}$  was smaller with SEIRAHm than with the two other models; this could have contributed to the smaller number of predicted hospitalized cases at the end of lockdown by this model. The values of  $T_c$  estimated by the three models were 24 to 25 days.

The predictions of regional indicators were quite heterogeneous. All models overestimated the daily numbers of hospitalized (prevalent) cases in IDF. For ARA, just like EHESpm, INSERMm performed well but SEIRAHm overestimated the maximum daily number of hospitalized cases then underestimated the daily number of hospitalized cases at the end of the lockdown. For GE, SEIRAHm overestimated and EHESpm underestimated slightly the prevalence of hospitalized cases, whereas INSERMm was rather accurate. For SUD, EHESpm predicted satisfactorily the number of daily hospitalized cases, whereas SEIRAHm underestimated it and INSERMm overestimated it. Except for ARA, the estimated number of prevalent hospitalized cases at the beginning of the modelling was lower with SEIRAHm than with the two other models (Table B.2), whereas parameters  $\beta_1$  were higher with SEIRAHm than with the two other models and barely higher with EHESpm than with INSERMm. Parameters  $\beta_{2,T_c}$  were smaller with SEIRAHm than with the two other ones; this may explain the smaller number of predicted hospitalized cases at the end of lockdown for with SEIRAHm, except for the IDF region. GE excluded, the values of  $T_c$  estimated by the three models for the three other regions were quite close. Each overestimation of the number of prevalent hospitalized cases was generally associated with a delayed corresponding peak and the underestimation with an advanced peak. In all regions, the maximum number of individuals in hospital was observed after April 6, whereas the parameters were estimated on purpose before the peak of hospitalizations was reached.

### 3.3 Predicted epidemic course after lockdown

When the F-WL approach was applied to fit the national data, the  $R_0$  estimated with INSERMm and EHESpm were very close (0.8 and 0.9 respectively; Table 1), whereas the one estimated with SEIRAHm was higher (= 1.3). Figure 5 shows that the scenario retained by SEIRAHm overestimated the number of hospitalized individuals after June 10. The scenarios obtained with

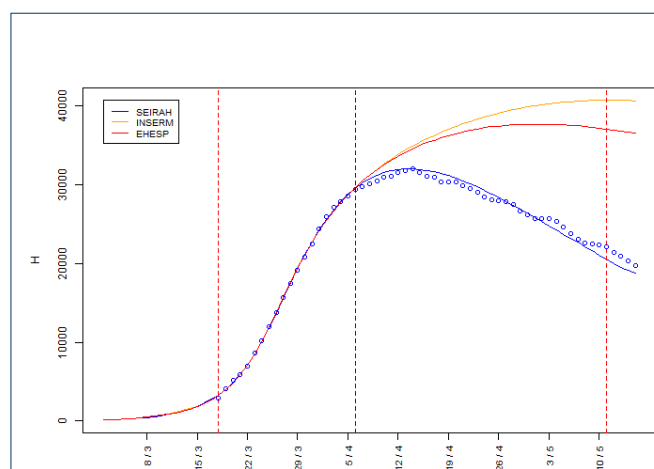


Figure 4: Number of individuals in compartment  $H$  over time in whole France as computed by each model ( $H + ICU$  in INSERMm).

SEIRAHm underestimated the hospitalization prevalence after the lockdown during the second half of May (Figure B.4a), which was not the case with INSERMm or EHESpm (Figures B.4c and B.4e).

Table 1: Estimated  $R_0$

	France	ARA	IDF	GE	SUD
SEIRAHm F-WL	1.4	0.7	1.5	1	1.5
INSERMm F-WL	0.8	0.1	1.2	0.8	0.9
EHESpm F-WL	0.9	0.2	1.4	0.9	1
SEIRAHm F-ALEL	0.9	0.2	1.2	1.3	1.3
INSERMm F-ALEL	0.8	0.3	1.2	0.7	1.1
EHESpm F-ALEL	0.9	0.4	1.3	0.7	1.1
Government estimations <sup>a</sup>	0.93	1.02	0.91	0.89	-

Estimated  $R_0$  with F-WL and F-ALEL approaches on June 6, 2020.

<sup>a</sup>The weekly  $R_e$  estimations made by the French government and published for the week between 06/06/2020 and to the 12/06/2020. Due to the fact that "SUD" is the aggregate of 3 regions, there is no associated government estimation.

When the F-WL approach was applied to fit the regional data, SEIRAHm estimated a higher  $R_0$  than INSERMm and EHESpm (Table 1). The  $R_0$  estimated by fitting EHESpm were slightly higher than those estimated with INSERMm. The hospitalization prevalence after June 10 indicated that the  $R_0$  estimated by SEIRAHm was clearly overestimated for regions IDF, GE, and SUD but slightly underestimated for ARA.

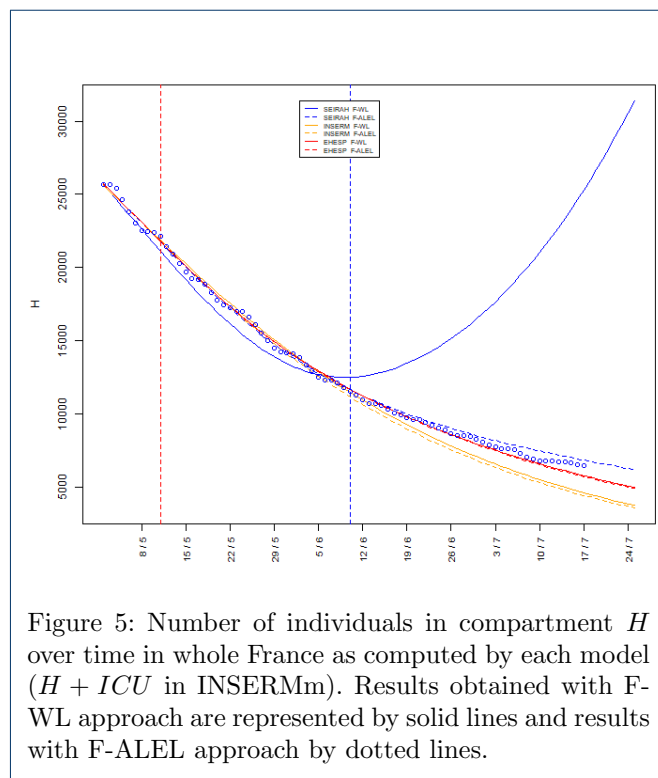


Figure 5: Number of individuals in compartment  $H$  over time in whole France as computed by each model ( $H + ICU$  in INSERMm). Results obtained with F-WL approach are represented by solid lines and results with F-ALEL approach by dotted lines.

The predictions of INSERMm and EHESPm were quite reasonable for regions GE and SUD, overestimated for IDF, and underestimated for ARA (Figure B.5, appendix B.2).

When the F-ALEL approach was applied to fit the national data, SEIRAHm showed a much better fit than with the F-WL approach (Figure 5, dotted lines). The three models estimated the same  $R_0$  for June 2 ( $= 0.9$ ). The  $R_0$  estimated with this approach during the lockdown was 0.66 with SEIRAHm, 0.77 with INSERMm, and 0.8 with EHESPm (Table B.4). Figure B.4b shows that SEIRAHm scenarios were more realistic than those obtained with F-WL approach. On the contrary, INSERMm and the EHESPm provided similar estimations with F-WL and F-ALEL approaches (Figures B.4d and B.4f). Regarding the results obtained with the F-ALEL approach during the early stage of the epidemic, all three models predicted too many hospitalizations at the beginning of the lockdown, which was not the case at the end of the lockdown (Figure B.6).

When the F-ALEL approach was applied to fit the regional data, the three models led to close results for SUD

region, but quite different for GE region. For all regions except GE, the three models estimated a higher  $E_0$  and a lower  $\beta_1$  with F-ALEL approach than with F-WL approach (Table B.3).

## 4 Discussion

### 4.1 Description of the epidemic during the whole lockdown period

With F-WL approach, all three models succeeded in matching the observed prevalence in compartment  $H$ . However, regarding the estimated parameters (Table B.1, Appendix B.1), several comments may be made: (i) The estimated values of  $T_c$  for whole France, (24.3 to 26.2 days after the start of the simulation on March 2) corresponds to a delay of 8.3 to 10.2 days from the beginning of the lockdown, which is reasonable given the incubation period of the disease and the time needed to establish the lockdown; (ii) The equations of the three models correspond to specific functional forms and lead to different parameter estimates. The high value of  $\beta_1$  obtained with SEIRAHm allowed explaining the differences between estimated values of the parameters by the three models. Indeed, a high  $\beta_1$  means a high virulence that requires few infected individuals at time  $t = 0$  (low  $E_0$ ) to fit hospitalization data. In such a case, the daily incidence rate needs to be strongly shrunk to reflect the lockdown effect (low  $\beta_{2,T_c}$  and short  $T_c$ ). Regarding the regions (GE with SEIRAHm excluded), the values of  $T_c$  ranged from 22.7 to 27.9 and were thus quite similar to those of whole France. Point (ii) remains true for the four regions.

Whereas the models were built to match the daily prevalence of hospitalized cases, the estimated prevalence in other compartments differed by a factor of 2 to 4 at both national and regional levels (Figure B.1, in appendix B.2). In particular, the number of symptomatic cases (compartment  $I$  in SEIRAHm,  $I_{ps} + I_{ms} + I_{ss}$  in INSERMm, and  $I + I_{nh}$  in EHESPm) was more than three times lower with SEIRAHm than with the two other models. This admits two explanations. The first one is that, unlike INSERMm and EHESPm, SEIRAHm did not consider age groups; thus, the mean stay in compartment  $H$  of SEIRAHm was approximated as a weighted mean of age-specific mean stay times in compartment  $H$  from the two other models, the weights being the age-specific probabilities of hospitalization (see Equation (13) in Appendix A.2). However, with this simplification, it was not possible to obtain age-independent models able to reproduce the dynamics of age-dependent models. Indeed, the

proposed simplification ignores possible changes of average age in compartment  $H$  over time (due to the fact that the proportion of individuals of each age group in compartment  $H$  change over time), resulting in a lack of flexibility. These parameter differences explain also the lower estimation of daily hospital incidences in Figure 2b. The second explanation is the structural differences between the models. The incidence of hospitalized cases (in compartment  $H$ ) depends directly on the prevalence of symptomatic cases (in compartment  $I$ ). The incidence in compartment  $H$  was calculated as the positive term of compartment  $H$  derivative which in SEIRAHm is given by System 4:

$$\frac{dH^+}{dt} = \frac{p_H}{t_{bh}} I. \quad (7)$$

In INSERMm, the same incidence is given by System 5 (summing incidence in  $H$  and  $ICU$ ):

$$\frac{dH^+}{dt} + \frac{dICU^+}{dt} = \frac{1}{t_{bh}} I_{ss}. \quad (8)$$

Finally, in EHESPM, the incidence given by System 6 is:

$$\frac{dH^+}{dt} = \frac{p_H}{t_{bh}} I.$$

Despite the differences linked to the fixed parameters explained in Section 2.2.1 (Paragraph INSERM model), the incidence of hospitalized cases was nearly the same with the three models (Figure 2b). Thus, the numbers  $p_H I$  with SEIRAHm,  $I_{ss}$  with INSERMm, and  $p_H I$  with EHESPM were rather close. However, in SEIRAHm, compartment  $I$  was the only one that represented the infected symptomatic cases, whereas INSERMm included  $I_{ms}$  and  $I_{ps}$ , and EHESPM compartment  $I_{nh}$ . Excluding the parametrization effect related to the average age in compartment  $H$ , comparing the number of infected symptomatic cases in SEIRAHm and EHESPM is direct: in EHESPM, this number is higher by an amount  $I_{nh}$  than in SEIRAHm (this interpretation is further investigated in C.2). The comparison with INSERMm is not straightforward making it necessary to rewrite the equations for  $I_{ss}$  and  $I_{ms} + I_{ps}$  as follows:

$$\begin{cases} \frac{d(I_{ps} + I_{ms})}{dt} + \frac{1}{t_s}(I_{ps} + I_{ms}) = \frac{(1-p_A)(1-p_H)}{t_p} I_p, \\ \frac{dI_{ss}}{dt} + \frac{1}{t_{bh}} I_{ss} = \frac{(1-p_A)p_H}{t_p} I_p. \end{cases}$$

Assuming that the flows are much larger than the population variation<sup>[7]</sup> in the left-hand side of both equations, the system can be rewritten:

$$\begin{cases} \frac{1}{t_s}(I_{ps} + I_{ms}) \approx \frac{(1-p_A)(1-p_H)}{t_p} I_p, \\ \frac{1}{t_{bh}} I_{ss} \approx \frac{(1-p_A)p_H}{t_p} I_p. \end{cases}$$

Combining the two equations leads to:

$$\frac{1}{t_s}(I_{ps} + I_{ms}) \approx \frac{1-p_H}{p_H} \frac{1}{t_{bh}} I_{ss}.$$

As the incidences of hospitalized cases predicted by the three models are close (see Figure 2b), using Equations (7) and (8) leads to:

$$I_{ps} + I_{ms} \approx \frac{t_s}{t_{bh}} (1-p_H) I^{SEIRAHm}. \quad (9)$$

The coefficient  $\frac{t_s}{t_{bh}} (1-p_H)$  is roughly equal to 2, which explains much of the observed difference<sup>[8]</sup>. The differences in observed infected symptomatic cases implies differences between the infectious populations of the models.

This contributes to the higher  $\beta_1$  found with SEIRAHm while fitting this model on data of hospitalization. Indeed, given the lower number of infectious individuals, a higher virulence is needed to match the observed number of hospitalizations (see Equation 1 that reflects the entrance in the disease process where the second sum is the whole infectious population).

Each compartment may be subject to structural differences. As shown in Appendix C, it is not possible to make

<sup>[7]</sup>This is true except at the beginning and end of the epidemic, Figures C.3.

<sup>[8]</sup>Figure C.4 shows the plots of the two terms of Equation 9 over the fitting period.

an intuitive equivalence between compartments from two different models due to the non-stationary regimes of the three models. Thus, obtaining mathematically and medically consistent parameters that allow the dynamics of a model to be reproduced by a model with a different structure is almost impossible. The impossibility to replicate the results of one model by another raises a tricky issue: how can one be sure that the chosen model is the most suitable in a given context? This is a crucial question because structural differences come with a huge difference in the number of recovered individuals (Figure B.1 in Appendix B), and may thus lead to take very different measures to contain the epidemic. Disappointingly, it is impossible to tell which model was the best during the first stage of the COVID-19 epidemic because of the lack of suitable data. Thus, any model designed to predict the recurrence of an epidemic should be written with extreme care and caution and all hypotheses made on the disease courses should be validated against observed population-based data.

This study results can be compared with results available in the literature. In particular,  $R_e$  (computed as described in Appendix A.4) and the prevalence of  $R$  over time were plotted in Figure B.7 along with various published results for France. The values obtained here are within the ranges reported by the literature though the latter vary widely. This heterogeneity makes it impossible to prefer one model to another.

The three models used here were able to match hospital data but disagreed regarding almost all other compartments. The structure of each model, from age classes to compartment layouts, led to very different predictions regarding the course of the epidemic. These differences may have major effects on prediction: in exploring the risk of recurrence or computing  $R_e$ , the number of already immune individuals has a great impact on health policy.

Testing regularly a representative sample of individual allows monitoring the real number of infectious individuals (PCR tests) or the real number of recovered individuals (serological tests) over time and ensures more efficient model calibration. This is strongly recommended at various scales (local, regional, national); well-sized stratified samples would really help understanding the dynamics of the epidemic at each level.

## 4.2 Prediction of the course of the epidemic during the lockdown period

The French national predictions of prevalent hospitalized cases during the lockdown were strongly overestimated by INSERMm and EHESPM, whereas SEIRAHm predictions were close to the observed data (Figure 4). With the F-WL approach as with the F-SL approach, parameter  $\beta_1$  was almost two times higher with SEIRAHm than with the two other models, whereas the  $\beta_{2,T_c}$  with SEIRAHm was smaller.

Regarding the regional models (Figure B.3 in Appendix B.2), only the predictions with INSERMm for ARA and GE, and those of EHESPM for SUD were accurate. Overall, the quality of the results was unstable; it varied greatly between models and regions. All models indicated an important effect of lockdown (with all models,  $\beta_{2,T_c} < 0.3$ , see Table B.2 in Appendix B.1), but failed to reproduce the F-WL estimations of the parameters. The average relative difference in estimated  $\beta_1$  was 5.1% between F-WL (Table B.1) and F-SL (Table B.2) and of more than 20% for parameter  $\beta_{2,T_c}$ . The sole difference between F-WL and F-SL was the length of the time interval used to fit the models; it showed that it was not sufficient to fit compartment  $H$  over the 20 first days of the lockdown. Moreover, the differences were larger regarding  $\beta_{2,T_c}$  that needs a longer duration to seize the effect of the lockdown. Indeed, the full effect of  $\beta_{2,T_c}$  on the incidence in compartment  $E$  is obtained 24.5 days<sup>[9]</sup> after March 2 ( $t = 0$ ), which corresponded to March 26; and, as it takes on average 8.1 days (i.e.,  $t_i + t_{bh}$ ) to reach  $H$  from  $E$ , this means that the full effect of  $\beta_{2,T_c}$  on the incidence in  $H$  was likely to be noticed after April 3. The fact that, with F-SL approach, the models were fitted using data from March 18 to April 6 may explain the large difference in estimated  $\beta_{2,T_c}$  vs. F-WL approach.

The use of such compartmental models does not seem appropriate to predict the course of the epidemic during a lockdown when fitted only on data on compartment  $H$  at the beginning of the lockdown. Again, this underlines the need for prevalence data on compartment  $I$  that can lead to a better estimation of the lockdown effect at an early stage of the epidemic.

## 4.3 Predicted epidemic course after exiting the lockdown

In this part of the study, the model parameters have been first fitted before the end of the lockdown (on the daily

<sup>[9]</sup>Average of the values of  $T_c$  as estimated by F-WL approach and reported in Table B.1



prevalence of hospitalizations from March 18 to May 11 with F-WL approach and from March 8 to March 18 plus from May 1 to May 11 with F-ALEL approach). The models have then been used for projections with different values of post-lockdown  $R_0$  (Figure B.4) over a short term (May 11 to June 10) and medium term (June 11 to July 25). Next, with each model, the  $R_0$  maximizing the profile likelihood over the short term was retained.

The results concerning the post-lockdown scenarios obtained with F-WL were mixed. However, at a national level, the post-lockdown  $R_0$  values of 0.8 and 0.9 (Table 1, corresponding respectively to post-lockdown  $R_e$  values of 0.73 and 0.82) obtained with EHESPM and INSERMm were in line with the value 0.84 of the  $R_e$  given by the French government on its official dashboard on June 4 (obtained using the daily number of individuals visiting the emergency units as per the SurSaUD database). They were also in good agreement with other literature results (Table B.4) such as [10] ( $R_0$  value of 0.99 on May 30 and 0.89 on June 8 obtained with a simple SEIR model and fitting the SPF daily numbers of confirmed incident cases). These estimations are close despite methodological differences at two main levels: (i) the data used were different; and, (ii) the models used different representations of the disease process. With SEIRAHm, the post-lockdown  $R_0$  value obtained was much higher than with EHESPM or INSERMm, probably because F-WL approach was fitted using all lockdown data. This use of all data provided more information on the overall lockdown but led to an underestimation of the number of hospitalizations at lockdown end (Figure B.4a). This underestimated number of prevalent hospitalized cases led, in the short term, to the selection of a scenario that corresponded to an overestimated  $R_0$  (Figure 5).

At the regional level, all three models with F-WLL approach provided some unrealistic estimates of  $R_0$  (Table 1); either too low (ARA) or too high (IDF). As for SEIRAHm at the national level, this error could be due to the fitting method that did not favor a perfect match with end-of-lockdown data. It could also be due to the models that assumed linear variations for  $\beta_{2,t}$  at end of lockdown, which could be unrepresentative of the true variations of  $R_0$ .

F-ALEL approach improved significantly the results with SEIRAHm at the national scale (Figure 5), but not much those obtained with INSERMm and EHESPM. The overestimation of the prevalent hospitalized cases (vs.

SPF values) observed at the beginning of the lockdown on Figure B.6 may be attributed to the use of SurSaUD database before the lockdown for parameter estimation. Indeed, the correction of SurSaUD data (for better coherence with SPF data) may have been insufficient because of a non-constant corrective coefficient linked with the non-uniform distribution of SurSaUD database hospitals over the French territory.

At the regional level over a short term (May 11 to June 10), almost all prevalent hospitalizations as estimated with the F-ALEL approach were closer to the observed values than those estimated with the F-WL approach (Figure B.5). However, F-ALEL approach did not systematically improve the estimates of  $R_0$ . Indeed, the models performed better regarding hospitalizations at end of lockdown but  $R_0$  variations could not be more accurately captured.

Thus, at both regional and national levels, F-ALEL seemed more appropriate than F-WL to build profiles for short-term predictions but both failed to provide medium-term predictions. Here too, knowing the prevalence in other compartments (such as  $I$  or  $R$ ) could improve the quality of model calibration despite the need for a more complex approach to account for  $R_0$  variations after a lockdown in medium-term predictions.

## 5 Conclusion

Compartmental models have been used worldwide since the beginning of the COVID-19 pandemic to estimate or predict various parameters linked to its course in the population with the hope of helping decision-making regarding hospital management and/or lockdown and exit strategies. The designs, analyses, and results of these models are useful for all epidemiologists to adapt, extend, refine, or interpret their own models.

The analysis of these three models highlighted the influence of model structure on predictions. Whereas the three models described correctly the daily number of hospitalized cases and allowed estimating the changes in parameter values during the COVID-19 pandemic with data on only 20 days, they had limited abilities in predicting changes of the number of hospitalized cases during and after the lockdown period. As the information was restricted to hospitalized cases, intensive care cases, and disease related deaths, the information on the epidemic provided by the study of these data alone did allow knowing precisely the extent of the epidemic. As the information was restricted to hospitalized cases, intensive care

cases, and disease related deaths, the information on the epidemic provided by the study of these data alone did allow knowing precisely the extent of the epidemic.

These compartmental models were designed to fit epidemic data rather than predict the course of the epidemic. Regular tests on representative samples of the population would make it possible to monitor precisely the number of infected individuals (PCR tests) and immune individuals (serological tests) and better seize the dynamics of the epidemic. The seroprevalence of COVID-19 infection in May-June 2020 analyzed by an INSERM study [11] provided important information on the dynamics of the epidemic before and during the lockdown and on the risk factors associated with past COVID-19 infections. Repeating this analysis over time should provide further details on more recent dynamics of the epidemic, whereas a complementary study of the dynamics of PCR positive tests is crucial to understand the more recent course of the epidemic and predict soon enough the occurrence of a potential new wave.

The analysis of the predictive properties of compartmental models would greatly benefit from comparisons of the results obtained after adjustments with results from simulations with multi-agent models.

## 6 Abbreviations:

COVID-19: Coronavirus disease 2019; ICU: Intensive care unit; SEIRAHm: Susceptible-Exposed-Infectious-Recovered-Asymptomatic-Hospitalized model; INSERMm: INSERM model of the Institut National de la Santé et de la Recherche Médicale; EHESPM: model of École des Hautes Études en Santé Publique; F-WL: Fit over the whole lockdown; F-SL: Fit at start of lockdown; F-ALEL: Fit ante lockdown and end of lockdown; ARA: Auvergne-Rhône-Alpes region; GE: Grand Est region; IDF: Île-de-France region; SUD: Nouvelle Aquitaine, Occitanie, and Provence-Alpes-Côte d'Azur regions; SPF: Santé publique France; SurSaUD database: "Surveillance sanitaire des urgences et des décès" database; APHP: Assistance publique – Hôpitaux de Paris.

## 7 Acknowledgements

The authors thank the research teams from the EHESP, INSERM and Université de Bordeaux for their cooperation and advise. The authors also thank the EHESP for sharing their codes and data.

## 8 Authors' contribution

NP and RG implemented the three models and ran the simulations. RG, NP, CP, CR, VV, SD, JPB, AB, POG, AEL, SP, SL, PR participated to the study design, the statistical analysis and wrote the manuscript. SL and PR coordinated the project. JI contributed to editing the manuscript. All authors read and approved the final version of the manuscript.

## 9 Authors' information

Not applicable

## 10 Availability of data and materials

All data used during this study are available on [data.gouv.fr](http://data.gouv.fr) or in the published articles listed in the references, except APHP related data obtained from a personal communication of the EHESP. All data generated during this study are available from the corresponding author on reasonable request.

## 11 Ethics approval and consent to participate

Not applicable.

## 12 Consent for publication

Not applicable

## 13 Competing interests

The authors declare that they have no competing interests.

## 14 Funding

This work was supported by la Région Auvergne-Rhône-Alpes, Initiatives d'excellence (IDEX) - Université de Lyon, Université Claude Bernard Lyon 1 and École Centrale de Lyon.

### Author details

<sup>1</sup>Université de Lyon, F-69000, Lyon, France; Université Claude Bernard Lyon 1, Laboratoire de Sciences Actuarielle et Financière (LSAF), Institut de Science Financière et d'Assurances (ISFA), F-69007, Lyon, France. <sup>2</sup>Université de Lyon, F-69000, Lyon, France; École Centrale de Lyon, École Nationale d'Ingénieurs de Saint-Étienne (ENISE), École Nationale des Travaux Publics de l'État (ENTPE), Laboratoire de Tribologie et Dynamique des Systèmes (LTDS), CNRS UMR5513, F-69130, Écully, France. <sup>3</sup>Université de Lyon, F-69000, Lyon, France; INSA-Lyon, Laboratoire d'Informatique en Image et Systèmes d'information (LIRIS), CNRS UMR5205, F-69100, Villeurbanne, France. <sup>4</sup>Institut National de Recherche en Informatique et en Automatique (INRIA), Grenoble-Rhône-Alpes Research Centre, F-38330, Montbonnot, France. <sup>5</sup>Université de Lyon, F-69000, Lyon, France; Université Claude Bernard Lyon 1, Institut Camille Jordan (ICJ), CNRS UMR5208, F-69100, Villeurbanne, France. <sup>6</sup>Université de Lyon, F-69000, Lyon, France; École Centrale de Lyon,

Laboratoire d'InfoRmatique en Image et Systèmes d'information (LIRIS), CNRS UMR5205, F-69130, Écully, France. <sup>7</sup>Université de Lyon, F-69000, Lyon, France; École Centrale de Lyon, Laboratoire de Mécanique des Fluides et d'Acoustique (LMFA), CNRS UMR5509, F-69130, Écully, France. <sup>8</sup>Université de Lyon, F-69000, Lyon, France; Université Claude Bernard Lyon 1, Laboratoire de Biométrie et Biologie Évolutive (LBBE), CNRS UMR5558, F-69100, Villeurbanne, France. <sup>9</sup>Service de Biostatistique-Bioinformatique, Pôle Santé Publique, Hospices Civils de Lyon, F-69003, Lyon, France.

## References

- Organization, W.H.: Pneumonia of unknown cause – China (2020). <https://www.who.int/csr/don/05-january-2020-pneumonia-of-unknown-cause-china/en/> Accessed 2020-01-05
- Salje, H., Kiem, C.T., Lefrancq, N., Courtejoie, N., Bosetti, P., Paireau, J., Andronico, A., Hozé, N., Richet, J., Dubost, C.-L., Strat, Y.L., Lessler, J., Levy-Bruhl, D., Fontanet, A., Opatowski, L., Boelle, P.-Y., Cauchemez, S.: Estimating the burden of SARS-CoV-2 in France. *Science* **369**(6500), 208–211 (2020). doi:10.1126/science.abc3517
- Roques, L., Klein, E.K., Papaix, J., Sar, A., Soubeyrand, S.: Impact of lockdown on the epidemic dynamics of COVID-19 in France. *Frontiers in Medicine* **7**, 274 (2020)
- Pullano, G., Valdano, E., Scarpa, N., Rubrichi, S., Colizza, V.: Population mobility reductions during COVID-19 epidemic in France under lockdown. medRxiv (2020)
- Prague, M., Wittkop, L., Collin, A., Clairon, Q., Dutartre, D., Moireau, P., Thiebaut, R., Hejblum, B.P.: Population modeling of early COVID-19 epidemic dynamics in French regions and estimation of the lockdown impact on infection rate. medRxiv, 2020–042120073536 (2020). doi:10.1101/2020.04.21.20073536. Accessed 2020-07-23
- Di Domenico, L., Pullano, G., Sabbatini, C.E., Boëlle, P.-Y., Colizza, V.: Expected impact of lockdown in île-de-france and possible exit strategies. medRxiv (2020)
- Roux, J., Massonnaud, C., Crépey, P.: COVID-19: One-month impact of the French lockdown on the epidemic burden. medRxiv (2020)
- Prem, K., Cook, A.R., Jit, M.: Projecting social contact matrices in 152 countries using contact surveys and demographic data. *PLoS computational biology* **13**(9), 1005697 (2017)
- Diekmann, O., Heesterbeek, J.A.P., Roberts, M.G.: The construction of next-generation matrices for compartmental epidemic models. *Journal of the Royal Society Interface* **7**(47), 873–885 (2010)
- Zingano, P., Zingano, J., Silva, A., Zingano, C.: Defining and computing reproduction numbers monitor outbreak of Covid-19 or other epidemics. Publisher: Preprints (2020). doi:10.20944/preprints202006.0370.v1. <https://www.preprints.org/manuscript/202006.0370/v1>
- Carrat, F., de Lamballerie, X., Rahib, D., Blanche, H., Lapidus, N., Artaud, F., Kab, S., Renuy, A., de Edelenyi, F.S., Meyer, L., et al.: Seroprevalence of sars-cov-2 among adults in three regions of france following the lockdown and associated risk factors: a multicohort study. medRxiv (2020)
- Lauer, S.A., Grantz, K.H., Bi, Q., Jones, F.K., Zheng, Q., Meredith, H.R., Azman, A.S., Reich, N.G., Lessler, J.: The incubation period of coronavirus disease 2019 (COVID-19) from publicly reported confirmed cases: estimation and application. *Annals of internal medicine* **172**(9), 577–582 (2020)
- Ferguson, N., Laydon, D., Nedjati Gilani, G., Imai, N., Ainslie, K., Baguelin, M., Bhatia, S., Boonyasiri, A., Cucunuba Perez, Z., Cuomo-Dannenburg, G., et al.: Report 9: Impact of non-pharmaceutical interventions (NPIs) to reduce COVID-19 mortality and healthcare demand. to be published (2020)
- Mizumoto, K., Kagaya, K., Zarebski, A., Chowell, G.: Estimating the asymptomatic proportion of coronavirus disease 2019 (COVID-19) cases on board the Diamond Princess cruise ship, Yokohama, Japan, 2020. *Eurosurveillance* **25**(10), 2000180 (2020)
- Li, R., Pei, S., Chen, B., Song, Y., Zhang, T., Yang, W., Shaman, J.: Substantial undocumented infection facilitates the rapid dissemination of novel coronavirus (SARS-CoV-2). *Science* **368**(6490), 489–493 (2020)
- Byrne, A.W., McEvoy, D., Collins, A., Hunt, K., Casey, M., Barber, A., Butler, F., Griffin, J., Lane, E., McAloon, C., et al.: Inferred duration of infectious period of SARS-CoV-2: rapid scoping review and analysis of available evidence for asymptomatic and symptomatic COVID-19 cases. medRxiv (2020)
- Bi, Q., Wu, Y., Mei, S., Ye, C., Zou, X., Zhang, Z., Liu, X., Wei, L., Truelove, S.A., Zhang, T., et al.: Epidemiology and transmission of COVID-19 in 391 cases and 1286 of their close contacts in Shenzhen, China: a retrospective cohort study. *The Lancet Infectious Diseases* (2020)
- Foreman-Mackey, D., Hogg, D.W., Lang, D., Goodman, J.: emcee: The MCMC hammer. *PASP* **125**, 306–312 (2013). doi:10.1086/670067. 1202.3665
- Diekmann, O., Heesterbeek, J.A.P., Metz, J.A.: On the definition and the computation of the basic reproduction ratio  $r_0$  in models for infectious diseases in heterogeneous populations. *Journal of mathematical biology* **28**(4), 365–382 (1990)
- Van den Driessche, P., Watmough, J.: Reproduction numbers and sub-threshold endemic equilibria for compartmental models of disease transmission. *Mathematical biosciences* **180**(1-2), 29–48 (2002)
- Brauer, F., Castillo-Chavez, C.: *Mathematical Models in Population Biology and Epidemiology* vol. 2. Springer, New York (2012)
- Forien, R., Pang, G., Pardoux, E.: Estimating the state of the Covid-19 epidemic in France using a non-Markovian model. medRxiv, 2020–062720141671 (2020). doi:10.1101/2020.06.27.20141671
- Hoertel, N., Blachier, M., Blanco, C., Olsson, M., Massetti, M., Rico, M.S., Limosin, F., Leleu, H.: A stochastic agent-based model of the SARS-CoV-2 epidemic in France. *Nature Medicine*, 1–5 (2020). doi:10.1038/s41591-020-1001-6
- Marinov, T.T., Marinova, R.S.: Dynamics of COVID-19 using inverse problem for coefficient identification in SIR epidemic models. *Chaos, Solitons & Fractals* **X**, 100041 (2020). doi:10.1016/j.chaos.2020.100041
- Mamon, G.A.: Regional analysis of COVID-19 in France from fit of hospital data with different evolutionary models (2020). 2005.06552
- Derrode, S., Gauchon, R., Ponthus, N., Rigotti, C., Pothier, C., Volpert, V., Loisel, S., Bertoglio, J.-P., Roy for the Confine-Covid research group, P.: Piecewise estimation of  $R_0$  by a simple SEIR model. Application to COVID-19 in French regions and departments until June 30, 2020. HAL : <https://hal.archives-ouvertes.fr/hal-02910202> (2020)
- Mattern, J., Vauloup-Fellous, C., Zakaria, H., Benachi, A., Carrara, J., Letourneau, A., Bourgeois-Nicolaos, N., Luca, D.D., Doucet-Populaire, F., Vivanti, A.J.: Post lockdown COVID-19 seroprevalence and circulation at the time of delivery, France. medRxiv, 2020–071420153304 (2020). doi:10.1101/2020.07.14.20153304
- Stringhini, S., Wisniak, A., Piumatti, G., Azman, A.S., Lauer, S.A., Baysson, H., De Ridder, D., Petrovic, D., Schrempft, S., Marcus, K., Yerly, S., Arm Vernez, I., Keiser, O., Hurst, S., Posfay-Barbe, K.M., Trono, D., Pittet, D., Gétaz, L., Chappuis, F., Eckerle, I., Vuilleumier, N., Meyer, B., Flahault, A., Kaiser, L., Guessous, I.: Seroprevalence of anti-SARS-CoV-2 IgG antibodies in Geneva, Switzerland (SEROCoV-POP): a population-based study. *The Lancet* (2020). doi:10.1016/S0140-6736(20)31304-0
- Etalab: Covid-19 dashboard (2020). <https://dashboard.covid19.data.gouv.fr> Accessed 2020-08-26

## Appendix A: Supplementary materials

This appendix presents additional figures, the values of the parameters, the calibration process, and the method used for computing  $R_0$  and  $R_e$ .

### A.1 Compartment initialization

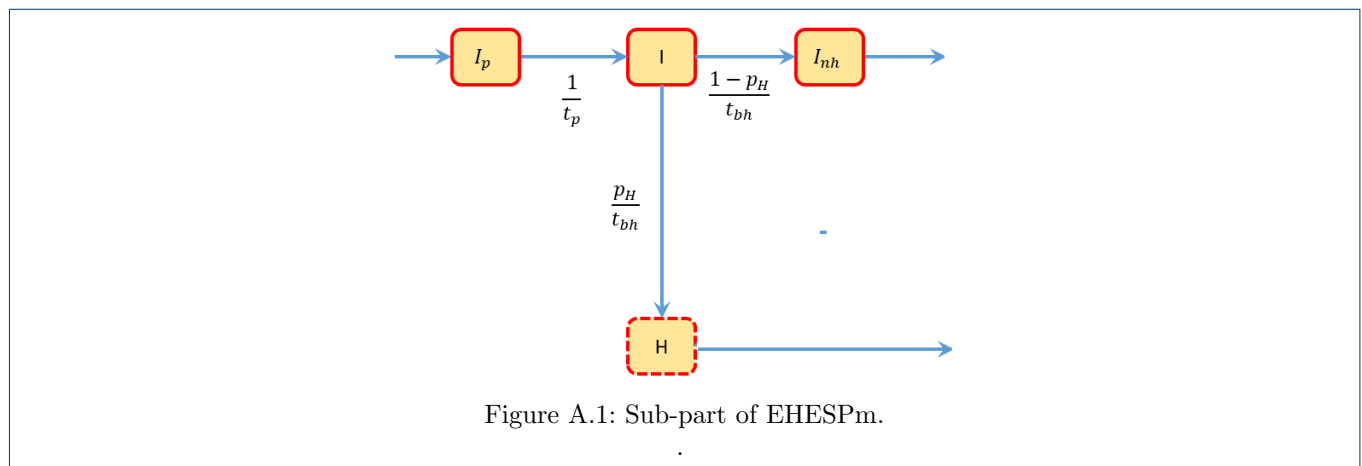
Epidemiological models require often the calibration of a starting parameter. This parameter may be either the date of the beginning of the epidemic or the number of people in some compartments. Originally, EHESPM was calibrated using the first method, whereas SEIRAHm and INSERMm were calibrated using the second method. For a fair comparison between models, we calibrated the three models using the second method. Thus, all three models were supposed to begin on March 2, 2020<sup>[10]</sup>. In the following, this date corresponds to  $t = 0$  (days).

To minimize the number of calibrated parameters and lessen the chance of overfitting, only one compartment was calibrated: the population in compartment  $E$  on March 2. The other compartments were initialized as follows. Let  $Z(t)$  denotes the number of individuals at time  $t$  in a compartment  $Z$ , and  $\Delta H^+(t)$  denotes the number of cases entering compartment  $H$  during day  $t$  (entering aggregation of  $H$  and  $ICU$  in INSERMm). Only SurSaUD database had data at the end of February / beginning of March. It contains only the value of  $\Delta H^+(t)$  over time, and as in [5], the hypothesis that nobody has exited from the  $H$  compartment before March 2 was made. The first hospitalization recorded by SurSaUD database occurred on February 27, 2020; thus, this hypothesis seems reasonable. Whence, the number of hospital beds occupied at the end of day 0 is  $H(0) = \sum_{t=-4}^0 \Delta H^+(t)$ .

It was also assumed that, in the early period of the pandemic, the number of dead or recovered individuals was negligible vs. the overall population and thus  $R(0)$  was set to 0 (and also  $D(0)$  in INSERMm).

Furthermore, there is a high volatility in the SurSaUD database, which was even truer at the beginning of the epidemic. Consequently, the data were smoothed using a moving average<sup>[11]</sup>.

The complete formulas that compute the initial population in the compartments of the three models are given in Table A.1. To give the intuition behind these formulas, let us consider a sub-part of EHESPM (see Figure A.1).



<sup>[10]</sup>For the original authors of SEIRAHm [5], it was the starting date of the epidemic in many regions

<sup>[11]</sup>At a given date  $t$ , the value  $\Delta H^+(t) = \frac{\sum_{i=-3}^3 \Delta \tilde{H}^+(t)}{7}$  is retained, with  $\Delta \tilde{H}^+(t)$  denoting the observed values.

The dynamics of compartments  $I$ ,  $H$  and  $I_{nh}$  are given by

$$\begin{cases} \frac{dI}{dt} = \frac{1}{t_p} I_p - \frac{1}{t_{bh}} I \\ \frac{dH}{dt} = \frac{p_H}{t_{bh}} I - \frac{1}{t_h} H \\ \frac{dI_{nh}}{dt} = \frac{1-p_H}{t_{bh}} I - \frac{1}{t_s - t_{bh}} I_{nh} \end{cases} \quad (10)$$

Since  $p_H, t_{bh}, I, H$  and  $t_h$  are non-negative, using the second equation of system 10, the number of cases entering compartment  $H$  during day  $t$  can be approximated by  $\Delta H^+(t) \approx \frac{p_H}{t_{bh}} I(t) \times \Delta t$ , with  $\Delta t = 1$  day. Thus

$$I(t) \approx \frac{t_{bh}}{p_H} \Delta H^+(t), \quad (11)$$

and  $I(0)$  is then set to  $\frac{t_{bh}}{p_H} \Delta H^+(0)$ .

The first equation of system 10 can be rewritten as  $I_p = (\frac{dI}{dt} + \frac{1}{t_{bh}} I) t_p$ . Then, the approximation  $\frac{dI}{dt}(t) \approx \frac{I(t+\Delta t) - I(t-\Delta t)}{2\Delta t}$  leads to  $I_p(t) \approx (\frac{I(t+\Delta t) - I(t-\Delta t)}{2\Delta t} + \frac{1}{t_{bh}} I(t)) t_p$ .

For  $t = 0$  and  $\Delta t = 1$ , using equation 11,  $I_p(0)$  is then set to  $\left( \frac{\frac{t_{bh}}{p_H} \Delta H^+(1) - \frac{t_{bh}}{p_H} \Delta H^+(-1)}{2} + \frac{1}{t_{bh}} I(0) \right) t_p$ .

Since  $I_{nh}$  and  $(t_s - t_{bh})$  are non-negative, using the third equation of system 10, the number of cases entering compartment  $I_{nh}$  during day  $t$  can be approximated by  $\Delta I_{nh}^+(t) \approx \frac{1-p_H}{t_{bh}} I(t) \times \Delta t$ , with  $\Delta t = 1$  day. Then, equation 11 leads to

$$\Delta I_{nh}^+(t) \approx \frac{1-p_H}{p_H} \Delta H^+(t). \quad (12)$$

Supposing that nobody has exited from compartment  $I_{nh}$  before March 2, as for compartment  $H$ , then  $I_{nh}(0) = \sum_{t=-7}^{-1} \Delta I_{nh}^+(t)$ . Thus, by equation 12,  $I_{nh}(0) \approx \frac{1-p_H}{p_H} \sum_{t=-7}^{-1} \Delta H^+(t)$ . So,  $I_{nh}(0)$  is set to  $\frac{1-p_H}{p_H} H(0)$ .

The other compartments are derived in a similar way. For models stratified by age,  $H(0)$  and other compartments are first computed as an aggregation for all age groups. Then, their partitioning is made according to the distribution of age in the number of hospital beds occupied on March 18 as reported by Santé Publique France.

## A.2 Parameters

Most of the parameters were chosen according to the literature. The parameters directly linked to the contagiousness of the disease over time (i.e.  $\beta_1, \beta_{2,t}$  and  $T_c$ ) were estimated (see Section A.3). Parameter  $E(0)$  was also estimated, while other compartment initial values were derived from the SurSaUD database (see Section A.1). Limiting the number of estimated parameters reduces the risk of overfitting, and having the same number of parameters for each model allows a fair comparison between them. A summary of the parameters used can be found in Table A.2. The values of age-dependent parameters can be found in Table A.3. For consistency, when a parameter was detailed by age group in INSERMm and EHESpm, a weighted mean (using the population of each age group as weight) was calculated to provide the corresponding parameter value in SEIRAHm.



Parameters	SEIRAHm	INSERMm	EHESPm
Starting date (t=0)	02-03-2020	02-03-2020	02-03-2020
$S(0)$	$N_{tot} - \sum_{Z=E,A,I,\dots} Z(0)$	$N_{tot} - \sum_{Z=E,A,I,\dots} Z(0)$	$N_{tot} - \sum_{Z=E,A,I,\dots} Z(0)$
$E(0)$	Estimated	Estimated	Estimated
$I_p(0)$	-	$\left( \frac{t_{bh} \Delta H^+(1) - t_{bh} \Delta H^+(-1)}{2} + \frac{I_{ss}(0)}{t_{bh}} \right) \frac{t_p}{(1-p_A)p_H}$	$\left( \frac{\frac{t_{bh}}{p_H} \Delta H^+(1) - \frac{t_{bh}}{p_H} \Delta H^+(-1)}{2} + \frac{I(0)}{t_{bh}} \right) t_p$
$A(0)$	$(I(0) + H(0)) \frac{p_A}{1-p_A}$	$I_{ss}(0) \frac{p_A}{(1-p_A)p_H}$	$(I_p(0) + I(0) + I_{nh}(0) + H(0)) \frac{p_A}{1-p_A}$
$I(0)$	$\Delta H^+(0) \frac{t_{bh}}{p_H}$	-	$\Delta H^+(0) \frac{t_{bh}}{p_H}$
$I_{ps}(0)$	-	$I_{ss}(0) \frac{p_{Ips}}{p_H}$	-
$I_{ms}(0)$	-	$I_{ss}(0) \frac{p_{Ims}}{p_H}$	-
$I_{ss}(0)$	-	$\Delta H^+(0) t_{bh}$	-
$I_{nh}(0)$	-	-	$H(0) \frac{1-p_H}{p_H}$
$H(0)$	$\sum_{t=-4}^0 \Delta H^+(t)$	$(1 - p_{ICU}) \sum_{t=-4}^0 \Delta H^+(t)$	$\sum_{t=-4}^0 \Delta H^+(t)$
$ICU(0)$	-	$p_{ICU} \sum_{t=-4}^0 \Delta H^+(t)$	-
$D(0)$	-	0	-
$R(0)$	0	0	0

Table A.1: Initial populations in the compartments.

Table A.2: Parameter values

Parameters	Description	SEIRAHm	INSERMm	EHESPm	Source
$\beta_1$	Daily incidence hazard rate given a contact with someone contagious		Estimated		-
$T_c$	Date where the lockdown is fully effective		Estimated		-
$\beta_2, T_c$	Change of $\beta_1$ during lockdown		Estimated		-
$t_i$	Total incubation time		5.1 days		[5], [7], [12], [13]
$p_A$	Probability of being asymptomatic		0.5		[6], [14]
$i_A$	Relative infectivity of asymptomatic people. Set to 0 for compartments E, H, ICU, R and D. Set to 1 for all other infectious compartments.		0.5		[6], [15]
$t_s$	Time before recovering (compartments A and I)		7 days		[16] <sup>a</sup>
$t_{bh}$	Time before hospitalization		3 days		[2], [17]
$p_H$	Probability of hospitalization	0.08	By age		EHESP <sup>c</sup> , [7]
$t_h$	Hospitalization duration	17.3	By age		EHESP <sup>c</sup>
$N_{tot}$	Total population	By region	By age and region		[7], INSEE
$C$	Contact matrix	-	By age		[7], [8]
$t_p$	Duration of the prodromic phase	-	1.5 day		[6], [16] <sup>a</sup>
$p_{ICU}$	Probability of admission to ICU while at hospital	-	By age	-	EHESP <sup>c</sup>
$t_{icu}$	Time before recovering after admission to ICU	-	By age	-	EHESP <sup>c</sup>
$p_{D H}$	Probability of death at hospital (excluding ICU)	-	By age	-	EHESP <sup>c</sup>
$p_{D ICU}$	Probability of death while in ICU	-	By age	-	EHESP <sup>c</sup>
$p_{I_{ps}}$	Probability of being paucisymptomatic	-	By age	-	Assumed <sup>b</sup>
$p_{I_{ms}}$	Probability of developing moderate symptoms	-	By age	-	Assumed <sup>b</sup>

<sup>a</sup> At the time this paper was written, there was no real consensus about this value in the specialized literature. A value coherent with reference [16] was then chosen.

<sup>b</sup>  $p_{I_{ps}}$  and  $p_{I_{ms}}$  were obtained supposing  $p_{I_{ps}} = 1/3 \times p_{I_{ms}}$  under constraint  $p_H + p_{I_{ps}} + p_{I_{ms}} = 1$ , using the values of  $p_H$  given by age.

<sup>c</sup> Personal communication from the EHESP, whose team had access to APHP data, and provided the appropriate aggregated statistics.

The value of  $p_H$  in SEIRAHm is given by  $p_H = \frac{\sum_j^n N_{tot}^j p_H^j}{\sum_j^n N_{tot}^j}$ , with  $n$  denoting the number of age groups,  $N_{tot}^j$  the population in age group  $j$ , and  $p_H^j$  the probability of being hospitalized after showing symptoms for age group  $j$ .

The value of  $t_h$  in SEIRAHm is given by

$$t_h = \frac{\sum_{j=1}^n \left[ p_{ICU}^j t_{icu}^j + (1 - p_{ICU}^j) t_h^j \right] p_H^j N_{tot}^j}{\sum_{j=1}^n p_H^j N_{tot}^j}, \text{ where superscript } j \text{ denotes parameters for age group } j. \quad (13)$$

The  $N_{tot}^j$  values were given by the French age distribution (source: INSEE). This may create a potential bias because some elderly people live in nursing homes and might not go to hospital. Examples of age distributions in the population are given in Table A.5 (for France and for ARA region).

Table A.3: Age-dependent parameters

age	0-4	5-9	10-14	15-19	20-24	25-29	30-34	35-39	40-44
$p_H$	0.001	0.001	0.003	0.003	0.012	0.012	0.032	0.032	0.049
$p_{I_{ps}}$	0.25	0.25	0.249	0.249	0.247	0.247	0.242	0.242	0.238
$p_{I_{ms}}$	0.749	0.749	0.748	0.748	0.741	0.741	0.726	0.726	0.713
$p_{ICU}$	0.285	0.285	0.285	0.285	0.285	0.285	0.323	0.323	0.343
$p_{D ICU}$	0	0	0	0	0	0	0.2	0.2	0.31
$p_{D H}$	0	0	0	0	0	0	0.023	0.023	0.058
$t_h$	8.1	8.1	8.1	8.1	8.1	8.1	7.4	7.4	8
$t_{icu}$	19.8	19.8	19.8	19.8	19.8	19.8	20.7	20.7	20.5
age	45-49	50-54	55-59	60-64	65-69	70-74	75-79	80P	
$p_H$	0.049	0.102	0.102	0.166	0.166	0.243	0.243	0.273	
$p_{I_{ps}}$	0.238	0.225	0.225	0.209	0.209	0.189	0.189	0.182	
$p_{I_{ms}}$	0.713	0.674	0.674	0.626	0.626	0.568	0.568	0.545	
$p_{ICU}$	0.343	0.408	0.408	0.36	0.36	0.282	0.282	0.05	
$p_{D ICU}$	0.31	0.25	0.25	0.47	0.47	0.54	0.54	0.47	
$p_{D H}$	0.058	0.081	0.081	0.147	0.147	0.227	0.227	0.434	
$t_h$	8	9.4	9.4	11.4	11.4	15.9	15.9	26.6	
$t_{icu}$	20.5	24.5	24.5	17.6	17.6	23.4	23.4	19.2	

Values of the age-dependent parameters used in INSERMm and EHESpm, whenever applicable.

The contact matrix used in this study was computed as the sum of the five different contact matrices of [8] (matrices given for school, work, home, elderly, and others). It was also assumed that this contact matrix does not depend on the region under investigation. Considering those assumptions, the contact matrix can be summarized as in Table A.4. Notice that Prem et al. [8] considered 16 age groups, whereas this study, similarly with Roux et al. [7] considered 17 age groups, using in the contact matrix the same values for group 75-79 and group 80P (80 and older).

### A.3 Parameter estimation

Four parameters (i.e.,  $E(0)$ ,  $\beta_1$ ,  $\beta_{2,t}$  and  $T_c$ ) have been estimated for each model by likelihood maximization. The prevalent hospitalized cases were supposed to follow a Poisson distribution. The models being different, several optimization methods were used and the best results selected for each model.

With SEIRAHm, a constrained Nelder-Mead method was applied using `constrOptim` function in R. With EHESpm and INSERMm, a first constrained Nelder-Mead fit was applied using package `lmfit` in Python. This method showed convergence difficulties for  $E(0)$  and  $T_c$ . So, we retained the parameters obtained by a second fitting operation using package `emcee` in Python. This algorithm, detailed in [18], is an implementation of an affine-invariant ensemble sampler for Markov Chain Monte Carlo (MCMC).

age of the contact person	0-4	5-9	10-14	15-19	20-24	25-29	30-34	35-39	40-44	45-49	50-54	55-59	60-64	65-69	70-74	75-79	80P
80P	0.05	0.05	0.07	0.03	0.05	0.02	0.05	0.05	0.05	0.08	0.09	0.09	0.13	0.14	0.33	0.64	0.64
75-79	0.05	0.05	0.07	0.03	0.05	0.02	0.05	0.05	0.05	0.08	0.09	0.09	0.13	0.14	0.33	0.64	0.64
70-74	0.09	0.06	0.07	0.03	0.05	0.03	0.05	0.10	0.09	0.08	0.09	0.12	0.26	0.28	0.97	0.37	0.37
65-69	0.13	0.11	0.09	0.05	0.05	0.05	0.09	0.15	0.11	0.09	0.12	0.22	0.43	1.00	0.62	0.37	0.37
60-64	0.19	0.18	0.10	0.07	0.08	0.11	0.18	0.26	0.18	0.15	0.27	0.51	1.41	0.52	0.66	0.28	0.28
55-59	0.27	0.19	0.15	0.16	0.33	0.36	0.41	0.36	0.27	0.34	0.65	1.46	0.68	0.44	0.34	0.34	0.34
50-54	0.31	0.21	0.27	0.48	0.81	0.96	0.81	0.92	1.11	1.09	1.92	0.92	0.44	0.32	0.34	0.54	0.54
45-49	0.31	0.33	0.57	1.05	1.27	1.00	1.14	1.34	1.68	2.20	1.74	0.68	0.42	0.30	0.43	0.44	0.44
40-44	0.50	0.85	1.08	1.02	0.97	1.26	1.46	2.10	2.95	1.57	1.59	0.79	0.52	0.43	0.51	0.45	0.45
35-39	1.04	1.14	0.83	0.76	1.13	1.47	1.89	3.21	1.88	1.47	1.21	0.75	0.69	0.45	0.48	0.38	0.38
30-34	1.21	0.92	0.40	0.53	1.17	1.78	2.92	1.76	1.59	1.26	1.18	0.92	0.64	0.45	0.25	0.31	0.31
25-29	0.75	0.42	0.24	0.65	1.71	3.46	1.72	1.41	1.25	0.99	1.29	0.93	0.51	0.31	0.24	0.19	0.19
20-24	0.34	0.16	0.29	1.36	3.93	1.94	1.01	0.76	0.92	0.95	1.02	0.61	0.34	0.21	0.16	0.15	0.15
15-19	0.26	0.27	0.85	7.83	2.17	0.73	0.42	0.68	1.11	1.54	1.20	0.75	0.36	0.16	0.36	0.36	0.36
10-14	0.41	1.01	6.99	2.30	0.26	0.14	0.53	0.84	0.98	0.61	0.83	0.57	0.26	0.26	0.31	0.45	0.45
5-9	1.11	5.03	1.54	0.31	0.17	0.25	0.85	1.07	0.66	0.47	0.59	0.67	0.36	0.31	0.29	0.32	0.32
0-4	3.80	1.06	0.24	0.12	0.20	0.53	0.72	0.70	0.31	0.41	0.25	0.54	0.40	0.20	0.11	0.24	0.24
age of the subject	0-4	5-9	10-14	15-19	20-24	25-29	30-34	35-39	40-44	45-49	50-54	55-59	60-64	65-69	70-74	75-79	80P

Table A.4: Contact matrix used in this paper and issued from [8]. This representation is the transpose of contact matrix  $C$  in Equation 1.

Table A.5: Examples of age distributions of the population.

age	0-4	5-9	10-14	15-19	20-24	25-29	30-34	35-39	40-44
<b>ARA</b>	457174	479982	473565	446193	451364	479053	480439	514600	527126
<b>France</b>	3740815	3970379	3925574	3668642	3797703	3978589	4000150	4273138	4357173
age	45-49	50-54	55-59	60-64	65-69	70-74	75-79	80P	
<b>ARA</b>	514954	480081	484828	459146	438336	316476	255892	463163	
<b>France</b>	4329120	4129128	3991112	3973526	3736594	2588970	2146168	3893099	

In the three articles that introduced SEIRAHm, EHESPM, and INSERMm, the estimation of the parameters was always performed by likelihood maximization. However, the probability distributions and the data used for computing the likelihood were different. In this study, with all model, the likelihood was computed using the prevalent hospitalized cases, and assuming for them a Poisson distribution of a lambda parameter set at the number of hospitalizations of the day. In addition, for EHESPM, and INSERMm the  $E(0)$  compartment is assumed to be partitioned in age groups according to the age distribution of the population.

#### A.4 $R_0$ and $R_e$

Two useful quantities in epidemiology are the basic reproductive number  $R_0$  and its associated effective reproduction number  $R_e$ .

*General concept* Quantity  $R_0$  can be seen as the average number of new infection cases caused by a single infected individual during her/his entire infectious period, in a completely susceptible population. To compute  $R_0$  as defined

by Diekmann et al. [19], it is necessary to introduce the concept of next generation matrix. In the following, the approach and notational conventions of Van den Driessche and Watmough [20] are used. It is assumed that there is  $m$  different compartments of infected individuals, and  $n$  different age groups. Thus, there is a total of  $nm$  groups of infected (but not necessarily infectious) individuals. Let  $x(t) = (x_1(t), \dots, x_{nm}(t))$ , with quantity  $x_i(t)$ ,  $1 \leq i \leq nm$ , denoting the number of individuals in the  $i$ th group of infected individuals at time  $t$ .

Let  $\mathcal{F}_i(x(t))$  be the rate of new infected individuals in the  $i$ th group of infected individuals at time  $t$ . Let  $\mathcal{V}_i(x(t)) = \mathcal{V}_i^-(x(t)) - \mathcal{V}_i^+(x(t))$  where  $\mathcal{V}_i^-(x(t))$  is the rate of departures from group  $i$ , and  $\mathcal{V}_i^+(x(t))$  is the rate of arrivals in group  $i$  by all other means than new infections.

Let  $F = \left[ \frac{\partial_+ \mathcal{F}_i(x^0)}{\partial x_j} \right]_{1 \leq i, j \leq nm}$  and  $V = \left[ \frac{\partial_+ \mathcal{V}_i(x^0)}{\partial x_j} \right]_{1 \leq i, j \leq nm}$  where  $x^0$  is a disease free equilibrium and  $\partial_+$  denotes right partial derivatives. The next generation matrix is then defined as

$$G = FV^{-1}. \quad (14)$$

As shown in [20],  $V_{i,j}^{-1}$  can be seen as the average time an individual in the  $j$ th group of infected individuals will spend in the  $i$ th group of infected individuals during his/her remaining lifetime. Thus, intuitively, the next generation matrix is the product of new individuals in each state over the average time an individual stays infectious. Finally,  $R_0$  is defined as the spectral radius of  $G$ .

The effective reproduction number  $R_e$  takes into account the number of remaining susceptible individuals. As defined by Brauer and Castillo-Chavez ([21], p.440), it is given by

$$R_e(t) = R_0 \frac{S(t)}{N_{tot}}, \quad (15)$$

where  $N_{tot}$  is the total size of the population.

**$R_0$  computation for SEIRAHm** This paragraph aims to illustrate the previous paragraph with the computation of the basic reproduction number  $R_0$  for SEIRAHm. In this model, there is no age group, and there are four compartments with infected individuals :  $E$ ,  $I$ ,  $A$ ,  $H$ .

In the disease free equilibrium  $x^0$ , we have  $E = 0$ ,  $I = 0$ ,  $A = 0$ ,  $H = 0$  and  $S = N_{tot}$ , then the matrix  $F$  is given by

$$F = \begin{pmatrix} 0 & \beta_t & i_A \beta_t & 0 \\ 0 & 0 & 0 & 0 \\ 0 & 0 & 0 & 0 \\ 0 & 0 & 0 & 0 \end{pmatrix}, \quad (16)$$

where  $\beta_t = \beta_1 \beta_{2,t}$  (cf. equations 1 and 2), and the matrix  $V$  is given by

$$V = \begin{pmatrix} \frac{1}{t_i} & 0 & 0 & 0 \\ \frac{p_A - 1}{t_i} & \frac{p_H}{t_{bh}} + \frac{1 - p_H}{t_s} & 0 & 0 \\ -\frac{p_A}{t_i} & 0 & \frac{1}{t_s} & 0 \\ 0 & -\frac{p_H}{t_{bh}} & 0 & \frac{1}{t_h} \end{pmatrix}, \quad (17)$$

using Equation (14) and the definition of  $R_0$ , we have  $R_0 = t_s \beta_t \left[ p_A i_A + (1 - p_A) \frac{t_{bh}}{t_{bh}(1 - p_H) + t_s p_H} \right]$ .



<sup>[12]</sup>The compartments are ordered as follows :  $E, I_p, A, I_{ns}, I_{ms}, I_{ss}, H$  and  $ICU$ .

$F$  and  $V$  for the EHESPM model. Let  $1 \leq j_1, j_2 \leq n$ . The expression of  $F_{j_1, j_2}^{[13]}$  is given by

$$F_{j_1, j_2} = \beta_t C_{j_1, j_2} \frac{S^{j_1}}{N_{tot}^{j_2}} \begin{bmatrix} 0 & i_{I_p} & i_A & i_I & i_{nh} & i_H \\ & & & & & \\ & & & & & \\ & & & & & \\ & & & & & \\ & & & & & \end{bmatrix} \cdot \quad (20)$$

Again,  $V_{j_1, j_2}$  is a null matrix if  $j_1 \neq j_2$ . When  $j_1 = j_2$ , let  $j = j_1 = j_2$ , then  $V_{j, j}$  is given by

$$V_{j, j} = \begin{bmatrix} -\frac{1}{t_i - t_p} & 0 & 0 & 0 & 0 & 0 \\ \frac{1-p_A}{t_i - t_p} & -\frac{1}{t_p} & 0 & 0 & 0 & 0 \\ \frac{p_A}{t_i - t_p} & 0 & -\frac{1}{t_p + t_s} & 0 & 0 & 0 \\ 0 & \frac{1}{t_p} & -\frac{1}{t_{bh}} & 0 & 0 & 0 \\ 0 & 0 & 0 & \frac{1-p_{H,j}}{t_{bh}} & -\frac{1}{t_s - t_{bh}} & 0 \\ 0 & 0 & 0 & \frac{p_{H,j}}{t_{bh}} & 0 & -\frac{1}{t_{h,j}} \end{bmatrix} \cdot \quad (21)$$

## Appendix B: Additional figures and results

### B.1 Estimated parameters

Table B.1: parameters as estimated with F-WL approach.

	$E_0$			$\beta_1$			$\beta_{2, T_c}$			$T_c$		
	SEI	INS	EHE	SEI	INS	EHE	SEI	INS	EHE	SEI	INS	EHE
France	10 001	19 930	15 283	0.067	0.049	0.047	0.13	0.23	0.19	24.9	24.3	26.2
ARA	1 003	649	157	0.072	0.057	0.063	0.13	0.14	0.14	24.3	23.9	23.4
IDF	1 103	8 790	8 227	0.094	0.045	0.049	0.14	0.2	0.2	23.8	27.9	27.1
GE	1 014	8 506	8 138	0.104	0.039	0.043	0.14	0.22	0.22	16.9	23.5	22.7
SUD	997	248	37	0.068	0.049	0.05	0.11	0.15	0.16	26	26	26.1

Table B.2: parameters as estimated with F-SL approach.

	$E_0$			$\beta_1$			$\beta_{2, T_c}$			$T_c$		
	SEI	INS	EHE	SEI	INS	EHE	SEI	INS	EHE	SEI	INS	EHE
France	4 955	15 345	12 252	0.076	0.046	0.049	0.13	0.25	0.23	25	24.3	24.3
ARA	996	756	337	0.071	0.056	0.06	0.1	0.14	0.13	26.6	24.4	24.4
IDF	1 115	6 921	6 725	0.095	0.048	0.053	0.24	0.28	0.26	21.6	24.5	24.3
GE	1 108	8 508	8 601	0.103	0.039	0.042	0.18	0.22	0.21	16.5	23.6	23.5
SUD	61	85	37	0.084	0.05	0.05	0.05	0.18	0.15	25.8	24.8	26.1

All estimated parameters of the three different models used in this paper are reported in Tables B.1, B.2 and B.3.

### B.2 Other figures

The results with F-WL approach for different compartments and all regions are given in Figure B.1. This figure shows the number of individuals in compartment  $H$  ( $H + ICU$  in INSERMm), compartment  $I$  ( $I + I_{nh}$  in EHESPM,  $I_{ss} +$

<sup>[13]</sup>The compartments are ordered as follows:  $E, I_p, A, I, I_{nh}$  and  $H$ .

Table B.3: Model parameters as estimated with F-ALEL approach.

	$E_0$			$\beta_1$			$\beta_{2,T_c}$			$T_c$		
	SEI	INS	EHE	SEI	INS	EHE	SEI	INS	EHE	SEI	INS	EHE
France	15 328	29 719	28 435	0.068	0.043	0.046	0.15	0.19	0.2	20.7	24.5	23.7
ARA	1 018	1 641	1 380	0.069	0.047	0.05	0.13	0.16	0.17	25.2	27	26.3
IDF	4 539	12 021	12 309	0.077	0.043	0.047	0.15	0.21	0.21	21.8	26.8	25.7
GE	1 358	4 023	4 154	0.107	0.054	0.059	0.14	0.17	0.17	16	18.5	17.7
SUD	2 207	5 530	5 396	0.072	0.038	0.040	0.13	0.19	0.2	17.4	24.3	23.4

$I_{ps} + I_{ms}$  in INSERMm), compartment  $E$  ( $E + I_{ps}$  in INSERMm and EHESpm) and compartment  $R$  ( $R + D$  in INSERMm). Compartment  $A$  is not printed, but the results were very close to those of  $I$ , except that EHESpm had more individuals in  $A$  than INSERMm because individuals could stay longer in  $A$  in EHESpm than in INSERMm.

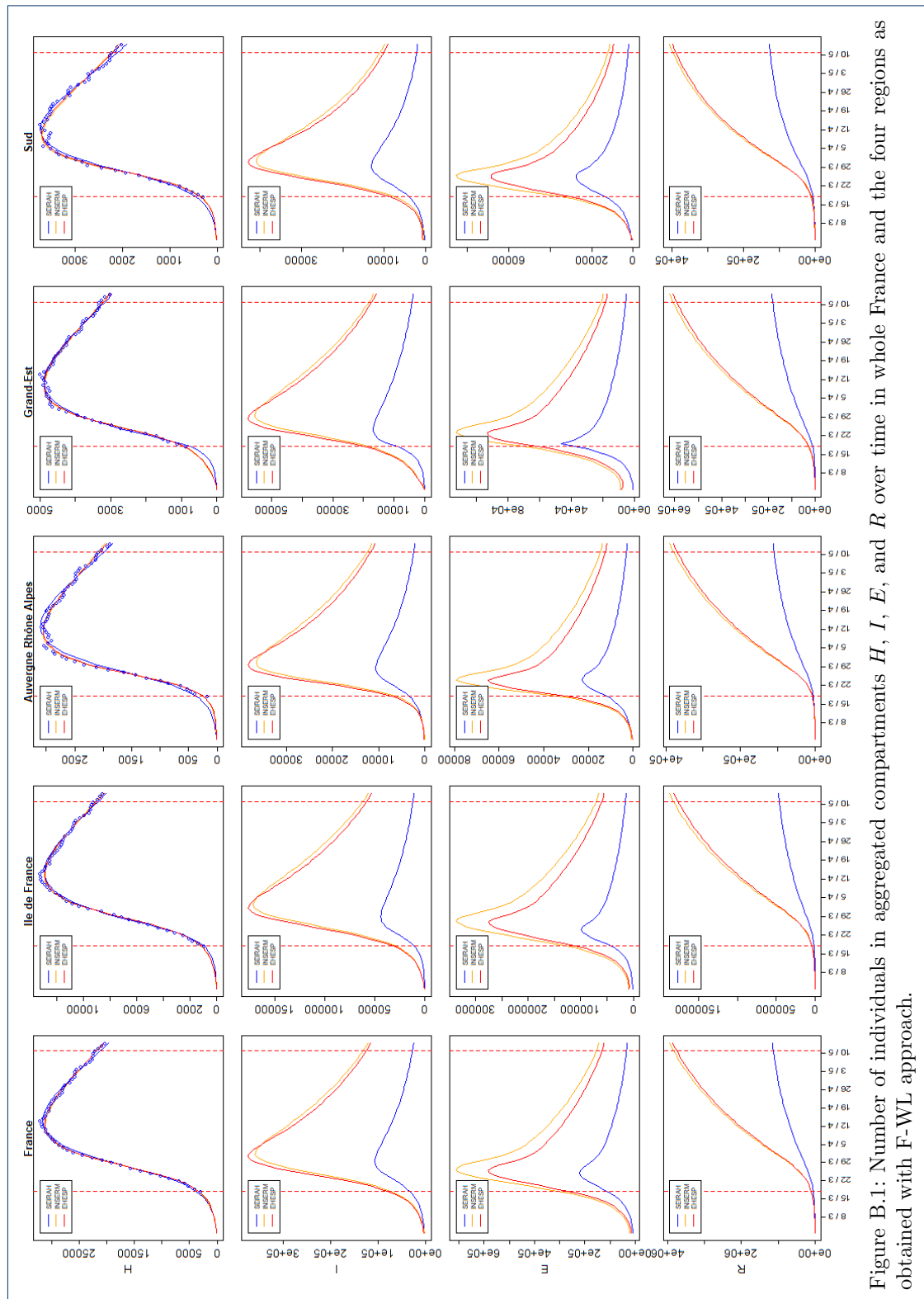


Figure B.1: Number of individuals in aggregated compartments  $H$ ,  $I$ ,  $E$ , and  $R$  over time in whole France and the four regions as obtained with F-WL approach.

It was also possible to look at compartments *ICU* and *D*, which were specific to INSERMm. As shown in Figure B.2, the model seemed to grasp the number of individuals dead at the hospital over the fitting period, but it overestimated the number of individuals in compartment *ICU*. This could be expected because, in this model, compartment *ICU* includes also pre-*ICU* and post-*ICU* hospitalizations.

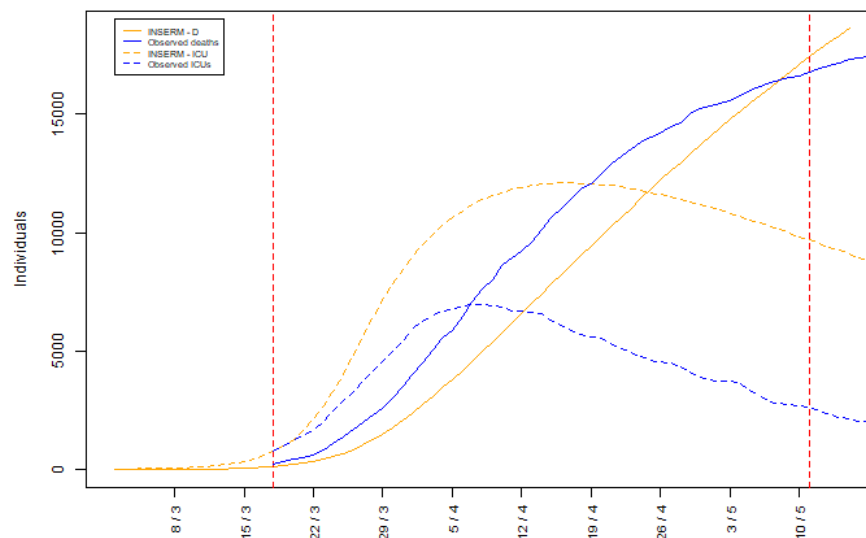


Figure B.2: Number of individuals in compartments *ICU* and *D* in whole France. Observed values and values obtained with F-WL approach and INSERMm.

Figure B.3 shows the results of F-SL approach, for compartment *H* ( $H + ICU$  in INSERMm) in all regions. The scenarios obtained with the F-WL and the F-ALEL approaches with different  $R_0$  are given in Figure B.4 (compartment *H*,  $H + ICU$  in INSERMm for whole France) and the best scenarios for all regions are shown in Figure B.5. Figure B.6 presents the results for whole France with F-ALEL approach vs. SPF data (blue dots). In this approach, over the period before the lockdown, the model was fitted to corrected SurSaUD data. The difference between SPF data and the fitted model at the beginning shows that, even after correction, SurSaUD data hardly matched SPF data.



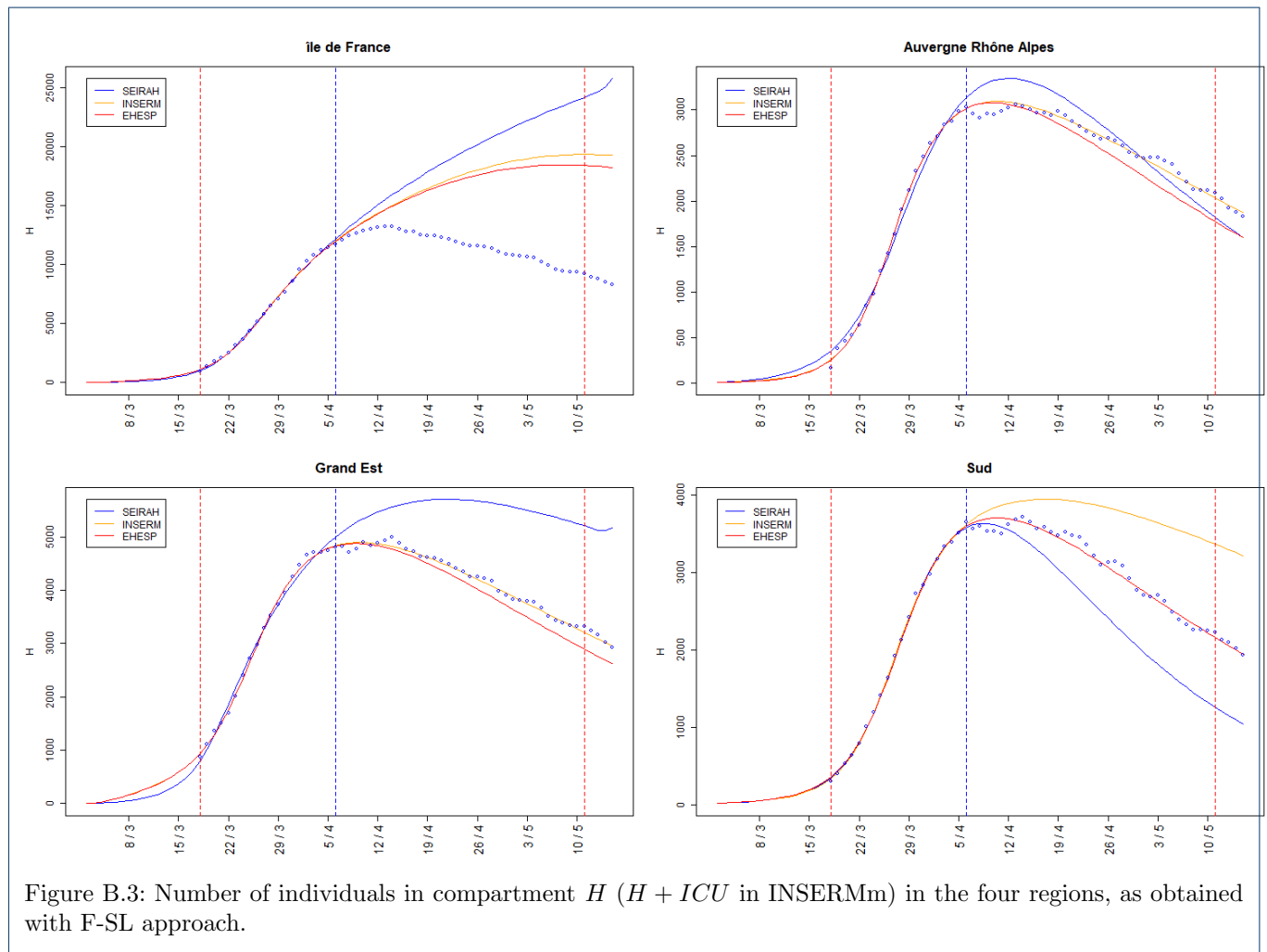


Figure B.3: Number of individuals in compartment  $H$  ( $H + ICU$  in INSERMm) in the four regions, as obtained with F-SL approach.

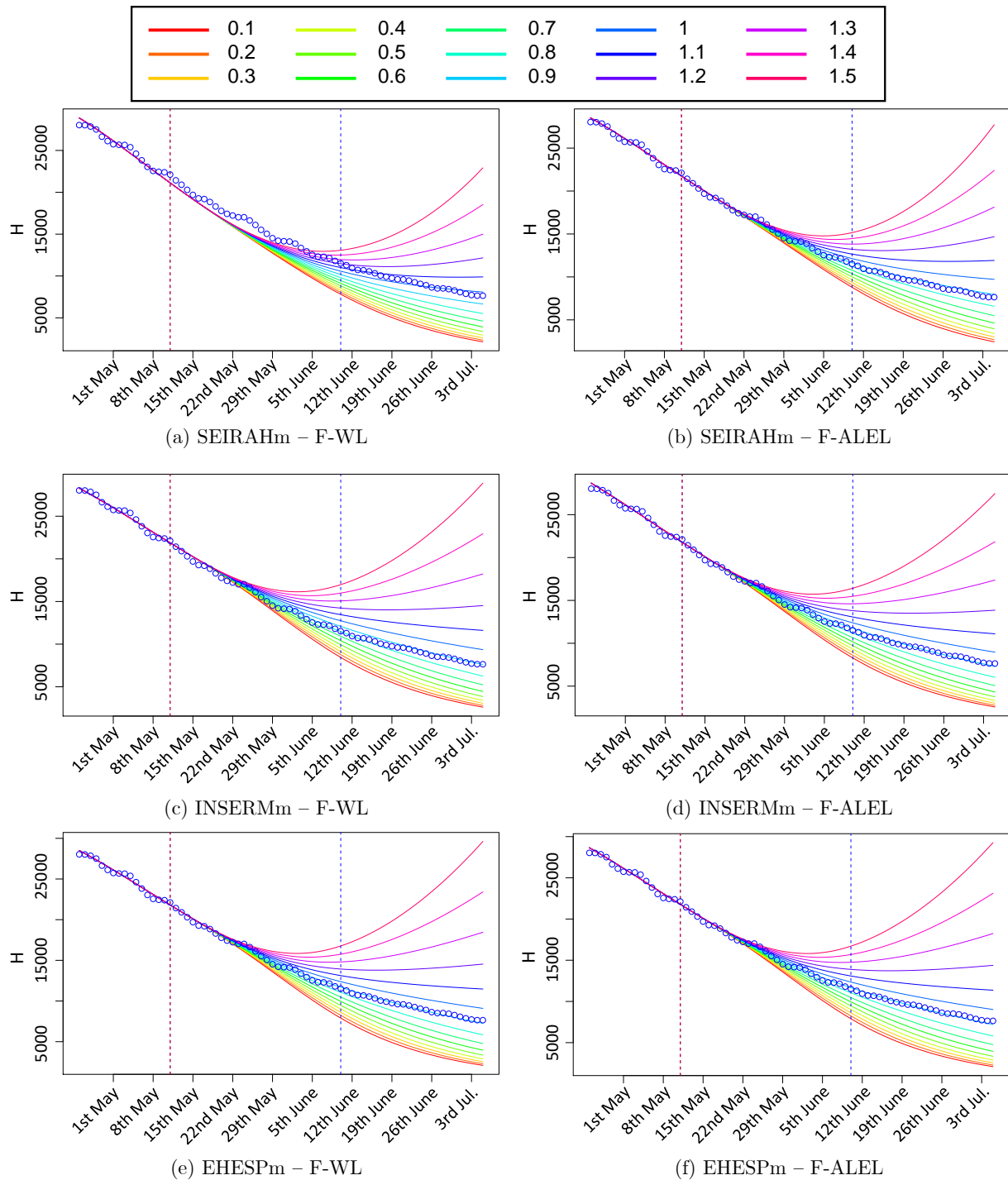
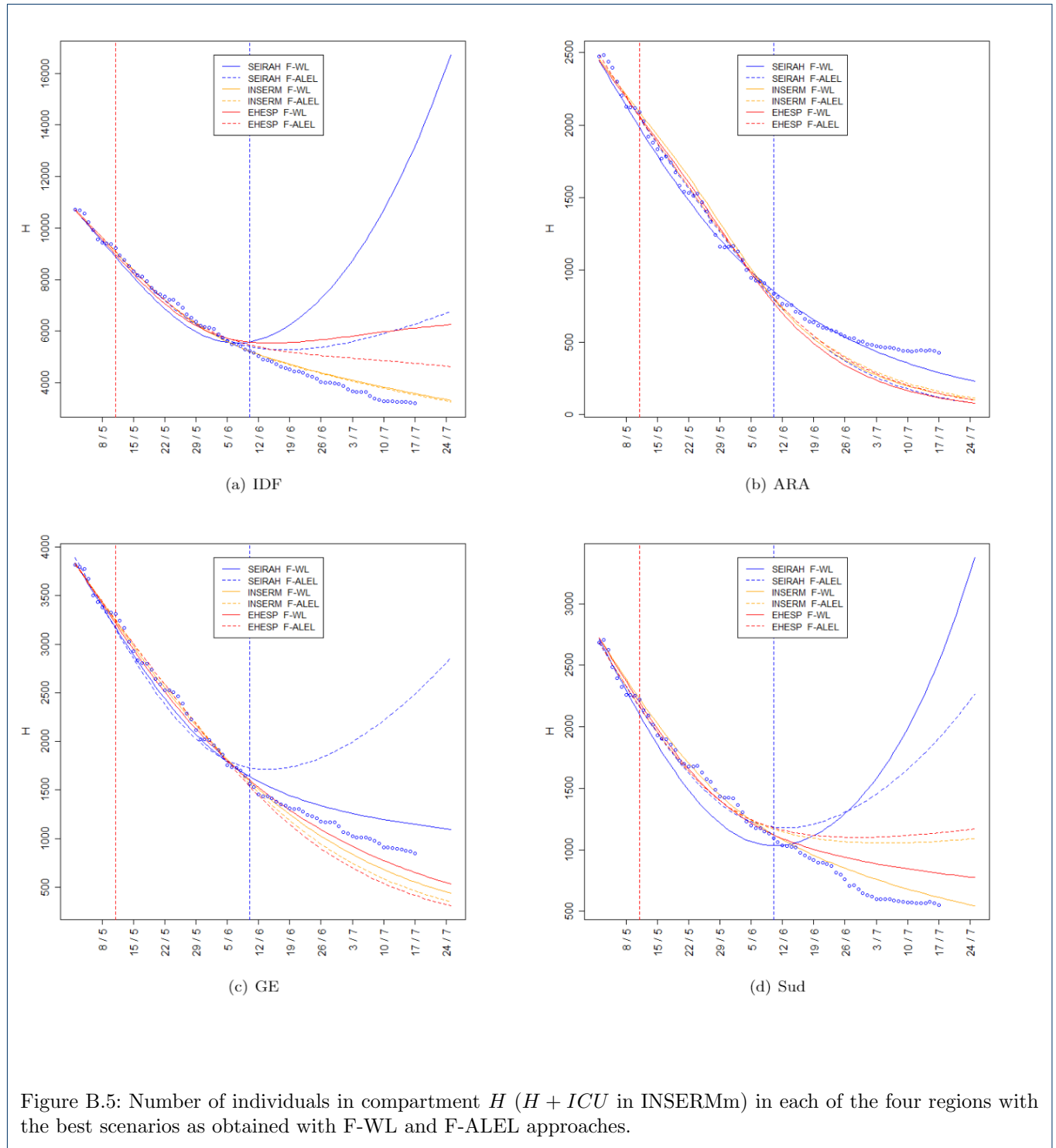


Figure B.4: Number of individuals in compartment  $H$  ( $H + ICU$  in INSERMm) in whole France with different  $R_0$  scenarios as obtained with F-WL and F-ALEL approaches.



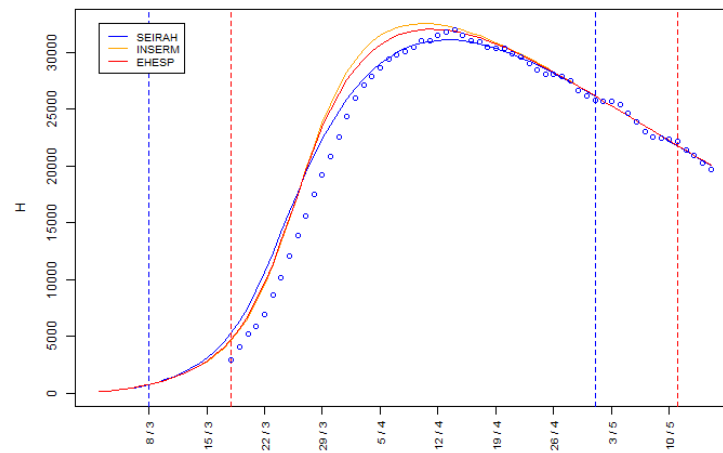


Figure B.6: Number of individuals in compartment  $H$  over time ( $H + ICU$  in INSERMm) in whole France with each model as obtained with F-ALEL approach.

Table B.4: Present and literature results compared.

$R_e$	$R_0$	Prevalence	Estimation date	Area	Source	
Our results (F-WL approach)						
0.72	0.78	5.9%	11/05	France	INSERMm model	
0.73	0.8	5.8%	11/05	France	EHESPM model	
0.64	0.65	1.9%	11/05	France	SEIRAHm model	
0.73	0.8	6.9%	02/06	France	INSERMm model	
0.82	0.9	6.8%	02/06	France	EHESPM model	
1.37	1.4	2.1%	02/06	France	SEIRAHm model	
Our results (F-ALEL approach)						
0.71	0.77	6.3%	11/05	France	INSERMm model	
0.73	0.8	6%	11/05	France	EHESPM model	
0.65	0.66	1.9%	11/05	France	SEIRAHm model	
0.72	0.8	7.2%	02/06	France	INSERMm model	
0.81	0.9	7%	02/06	France	EHESPM model	
0.88	0.9	2.2%	02/06	France	SEIRAHm model	
Literature model results						
0.67 0.5 1.5-1.7 0.65  0.67  0.68 0.47	0.99 0.89	2-3%	mid-June	France	[22]	
		8-10%	mid-June	IDF-GES	[22]	
			30/05	France	[10]	
			08/06	France	[10]	
		1.5%	11/05	Nouvelle-Aquitaine	[5]	
		9.9%	11/05	IDF	[5]	
			during lockdown	France	[5]	
		10.9%	11/05	France	[23]	
			11/05	France	[24]	
			June	France	[24]	
			during lockdown	France	[25]	
			1%	11/05	France	[25]
			3%	11/05	France	[25]
			during lockdown	France	[2]	
			5.3%	11/05	France	[2]
0.68 0.47	0.63 (0.71-0.93) 0.57 (0.7-1.01)	2 to 13%	11/05	IDF	[6]	
			during lockdown	IDF	[6]	
			during lockdown	France	[3]	
			10/05	France	[3]	
		during lockdown	France (Regions)	[26]		
		post lockdown	France (Regions)	[26]		
Results based on serological tests						
		0.84	8%	30/05	APHP maternity hospital	[27]
			11%	10/05	Geneva population	[28]
				04/06	from confirmed new cases	[29]

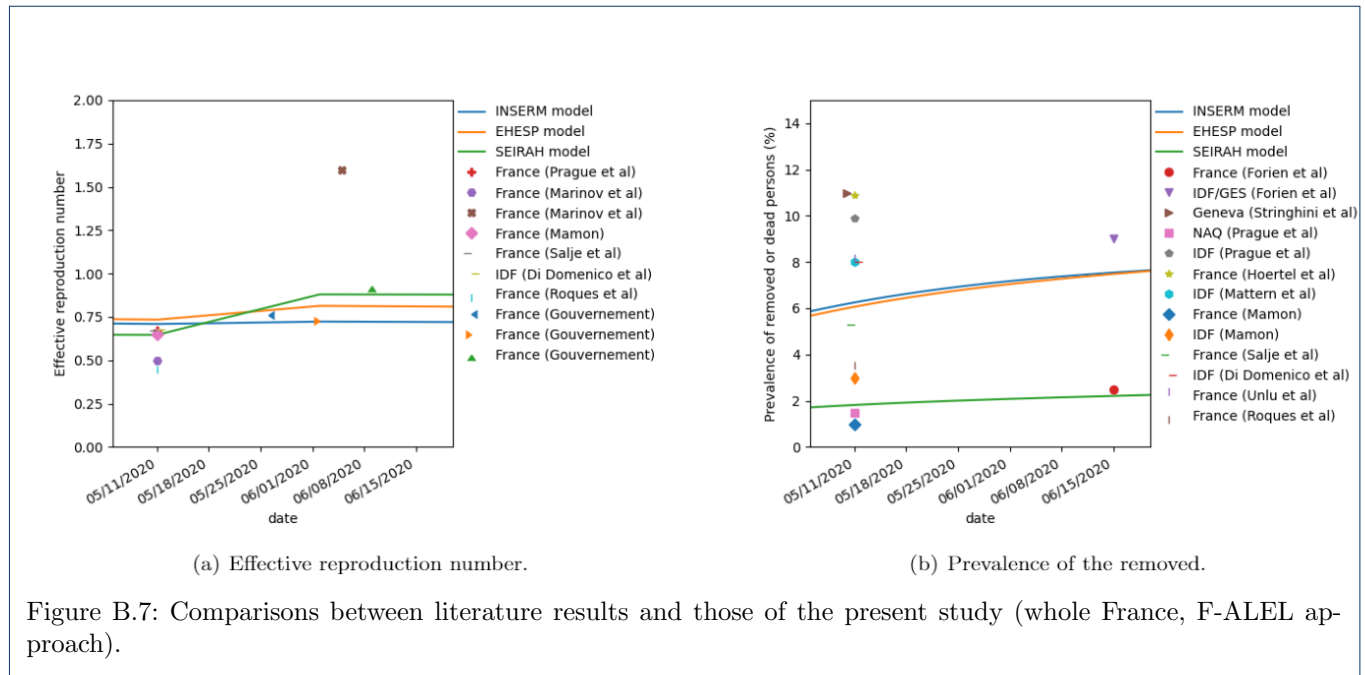


Figure B.7: Comparisons between literature results and those of the present study (whole France, F-ALEL approach).

## Appendix C: On the importance of the architecture of compartmental models

### C.1 Toy models to understand differences between models

One big effort in this paper was the use of the same parameter set in three models. The probabilities and durations used to determine the transitions between compartments were combined to ensure consistency between models. For instance, the sum of the durations of the two compartments of the pre-symptomatic period in INSERMm and EHESPM was set to be equal to the duration of the pre-symptomatic compartment of SEIRAHm. However, the results of the different models still differed. To explain this, let us consider four compartmental toy models. The first and simplest one is:

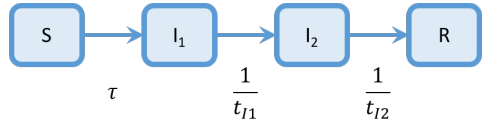
```

graph LR
    S[S] -- tau --> I[I]
    I -- 1/t_I --> R[R]
        
```

$$\begin{cases} \frac{dS}{dt} = -\tau S, \\ \frac{dI}{dt} = \tau S - \frac{I}{t_I}, \\ \frac{dR}{dt} = \frac{I}{t_I}. \end{cases} \quad (22)$$

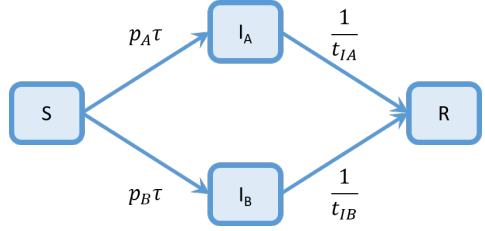
The following models can be seen as a detailed version of the first one. The second has two phases  $I_1$  and  $I_2$  during the infected period :





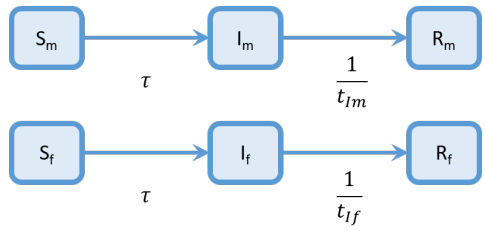
$$\begin{cases} \frac{dS}{dt} = -\tau S, \\ \frac{dI_1}{dt} = \tau S - \frac{I_1}{t_{I1}}, \\ \frac{dI_2}{dt} = \frac{I_1}{t_{I1}} - \frac{I_2}{t_{I2}}, \\ \frac{dR}{dt} = \frac{I_2}{t_{I2}}. \end{cases} \quad (23)$$

In the third model, there are two kinds of infected people:  $I_A$  and  $I_B$  with probabilities  $p_A$  and  $p_B$  (satisfying  $p_A + p_B = 1$ ):



$$\begin{cases} \frac{dS}{dt} = -\tau S, \\ \frac{dI_A}{dt} = \tau p_A S - \frac{I_A}{t_{IA}}, \\ \frac{dI_B}{dt} = \tau p_B S - \frac{I_B}{t_{IB}}, \\ \frac{dR}{dt} = \frac{I_A}{t_{IA}} + \frac{I_B}{t_{IB}}. \end{cases} \quad (24)$$

The fourth model considers two different sub-populations: say, females (compartments  $S_f$ ,  $I_f$  and  $R_f$ ) and males (compartments  $S_m$ ,  $I_m$  and  $R_m$ ):



$$\begin{cases} \frac{dS_f}{dt} = -\tau S_f, \\ \frac{dI_f}{dt} = \tau S_f - \frac{I_f}{t_{If}}, \\ \frac{dR_f}{dt} = \frac{I_f}{t_{If}}, \\ \frac{dS_m}{dt} = -\tau S_m, \\ \frac{dI_m}{dt} = \tau S_m - \frac{I_m}{t_{Im}}, \\ \frac{dR_m}{dt} = \frac{I_m}{t_{Im}}. \end{cases} \quad (25)$$

Let us assume that all compartments of all models are initially empty, except for  $S$ ,  $S_f$  and  $S_m$  that are related at  $t = 0$  by the constraint  $S_{f0} + S_{m0} = S_0$ . In such a simple case, the analytical form of the total number of infected cases in the four models is given by the four equations:

$$I(t) = \frac{S_0 t_I \tau}{t_I \tau - 1} \left( e^{-t/t_I} - e^{-\tau t} \right), \quad (26)$$

$$I_1(t) + I_2(t) = \frac{S_0 t_{I1} \tau}{t_{I1} \tau - 1} \left( e^{-t/t_{I1}} - e^{-\tau t} \right) + \frac{S_0 t_{I1} t_{I2} \tau}{(t_{I1} - t_{I2})(t_{I1} \tau - 1)} e^{-t/t_{I1}} + \frac{S_0 t_{I2} \tau}{(t_{I1} \tau - 1)(t_{I2} \tau - 1)} e^{-\tau t} - \frac{S_0 t_{I2}^2 \tau}{(t_{I1} - t_{I2})(t_{I2} \tau - 1)} e^{-t/t_{I2}}, \quad (27)$$

$$I_A(t) + I_B(t) = \frac{S_0 t_{IA} \tau p_A}{t_{IA} \tau - 1} \left( e^{-t/t_{IA}} - e^{-\tau t} \right) + \frac{S_0 t_{IB} \tau p_B}{t_{IB} \tau - 1} \left( e^{-t/t_{IB}} - e^{-\tau t} \right), \quad (28)$$

$$I_m(t) + I_f(t) = \frac{S_{m0} t_{Im} \tau}{t_{Im} \tau - 1} \left( e^{-t/t_{Im}} - e^{-\tau t} \right) + \frac{S_{f0} t_{If} \tau}{t_{If} \tau - 1} \left( e^{-t/t_{If}} - e^{-\tau t} \right). \quad (29)$$

In particular cases, some approximations or equivalences can be obtained, as for instance:

- If  $t_I = t_{I1} + t_{I2}$  and  $t_{I2}$  is sufficiently small vs.  $t_{I1}$ , then  $I(t) \approx I_1(t) + I_2(t)$ ;
- If  $t_{IA} = t_{IB} = t_I$  then  $I(t) = I_A(t) + I_B(t)$ ;
- If  $t_{If} = t_{Im} = t_I$  then  $I(t) = I_f(t) + I_m(t)$ .

However, in general, there is no direct identification of the parameters of the models 2, 3, and 4 to the parameters of the first model to have the same number of infected cases over time (i.e.,  $I(t) = I_1(t) + I_2(t) = I_A(t) + I_B(t) = I_f(t) + I_m(t)$ ).

It is interesting to note that this comes from the non-stationarity of the system. Indeed, in an unrealistic, but stationary regime where the sizes of  $S, S_f, S_m$  and all compartments of infected people are constant, then we have:

$$\begin{aligned} I &= t_I \tau S_0, \\ I_1 &= t_{I1} \tau S_0, \\ I_2 &= t_{I2} \tau S_0, \\ I_A &= p_A t_{IA} \tau S_0, \\ I_B &= p_B t_{IB} \tau S_0, \\ I_m &= t_{Im} \tau S_{m0}, \\ I_f &= t_{If} \tau S_{f0}. \end{aligned}$$

And the equivalence  $I = I_1 + I_2 = I_A + I_B = I_f + I_m$  can be ensured simply by choosing parameters that satisfy the constraints  $t_I = t_{I1} + t_{I2} = p_A t_{IA} + p_B t_{IB} = \frac{t_{Im} S_{m0} + t_{If} S_{f0}}{S_0}$ . Of course if parameters satisfying these constraints are applied in a non-stationary case, the equivalence is no longer guaranteed. As for the setting used Figure C.1, that shows substantial differences between models during transient regimes.

## C.2 Illustration with the modification of the compartments of SEIRAHm

As shown in Figure 3, the original SEIRAHm estimates much less individuals in compartment  $I$  than EHESPM in compartments  $I + I_{nh}$ . One reason for this difference could be the presence of compartment  $I_{nh}$  in EHESPM. To test this hypothesis, a compartment  $I_{nh}$  was added to the SEIRAHm. In the resulting model, the average time spent in compartment  $I$  is  $t_{bh}$ , and the average time spent in compartment  $I_{nh}$  is  $t_s - t_{bh}$ . So, this part of the model becomes similar to the same part in EHESPM. Figure C.2 shows that this change has an important impact on the results; the number of individuals in compartment  $I$  in the modified SEIRAHm becomes much closer to the one estimated in EHESPM (when compared to Figure 3).

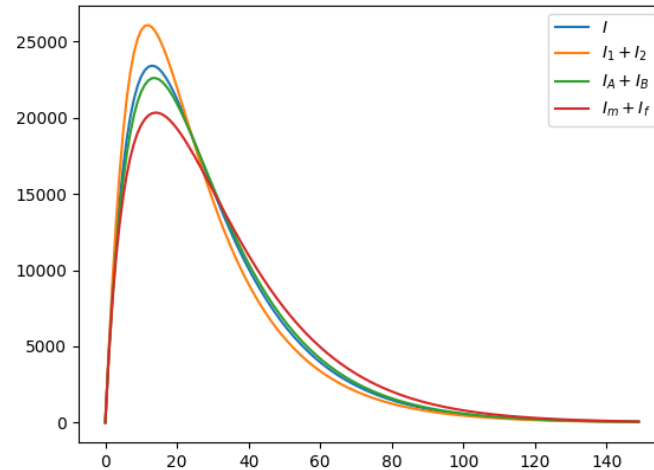


Figure C.1: Dynamics of the total number of infected cases with each of the four models.

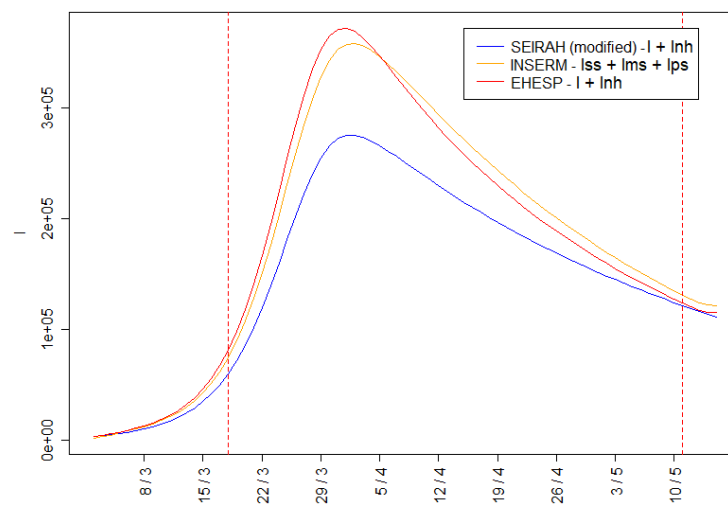
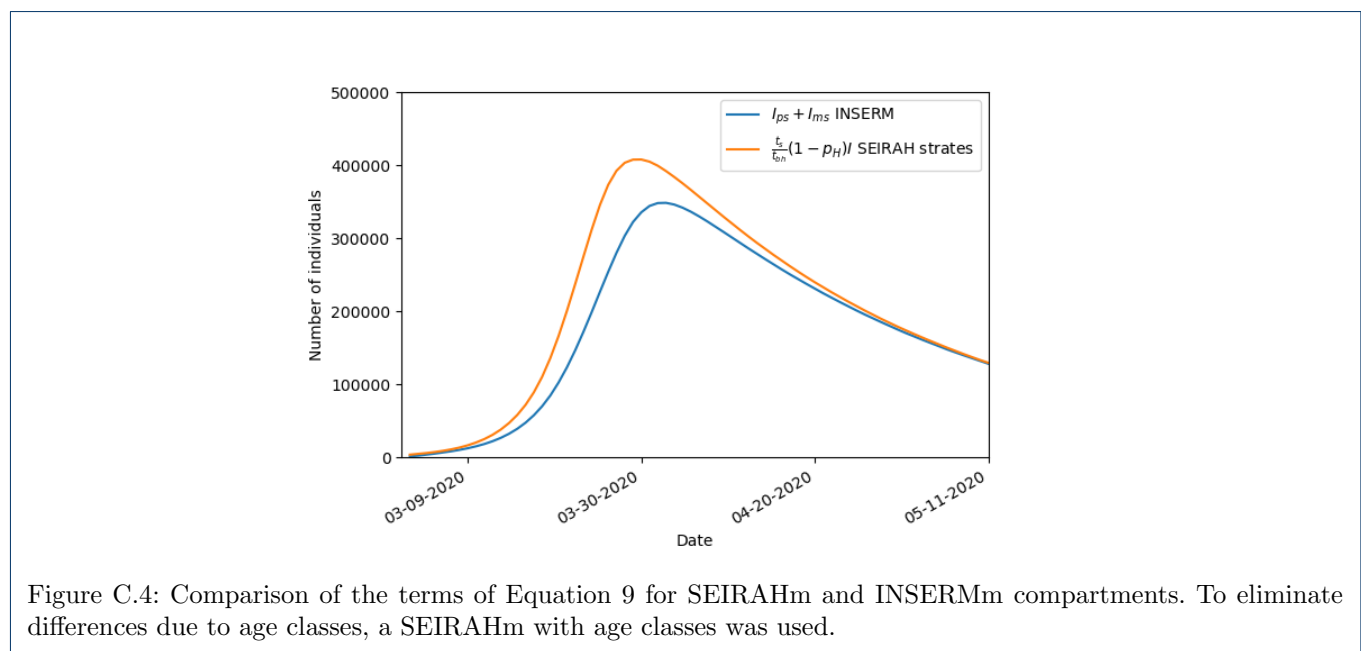
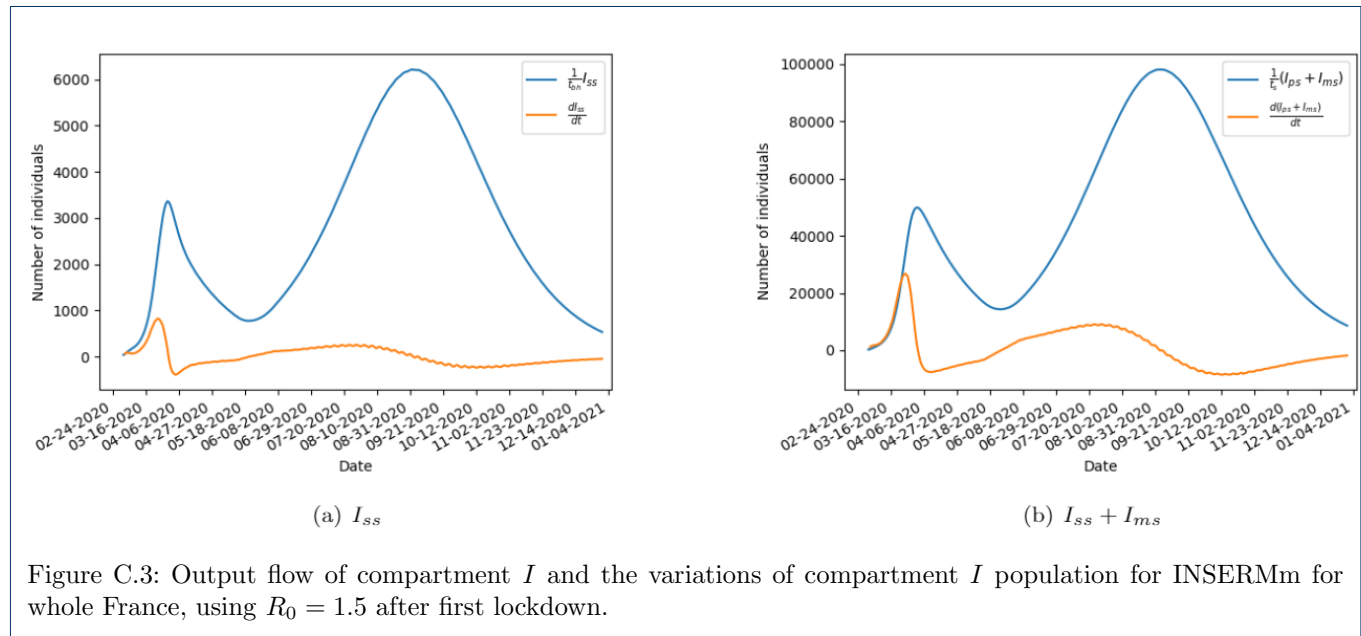


Figure C.2: Number of individuals in compartments  $I$  over time in whole France ( $I + I_{nh}$  in EHESPM and in modified SEIRAHm, and  $I_{ps} + I_{ms} + I_{ss}$  in INSERMm).

### C.3 Other figures for compartment size comparison made Section 4.1

Output flow and variations of compartment  $I$  are given Figure C.3. Figure C.4 shows the comparison of the terms of Equation 9.



# Members of the CovDyn (Covid Dynamics) group, by main affiliation

*LBBE – HCL* Mathieu FAUVERNIER, François GUEYFFIER, Jean IWAZ, Delphine MAUCORT-BOULCH, Simon PAGEAUD, Muriel RABILLOUD, Pascal ROY.

*LSAF* Alexis BIENVENÜE, Anne EYRAUD-LOISEL, Romain GAUCHON, Pierre-Olivier GOFFARD, Nicolas LEBOISNE, Stéphane LOISEL, Xavier MILHAUD, Denys POMMERET, Yahia SALHI, Pierre VANDEKERKHOVE.

*CIRI- HCL* Philippe VANHEMS.

*LMFA* Jean-Pierre BERTOGLIO.

*LTDS* Nicolas PONTUS.

*INL* Christelle YEROMONAHOS.

*LIRIS* Stéphane DERRODE, Véronique DESLANDRES, Mohand-Saïd HACID, Salima HASSAS, Catherine POTHIER, Christophe RIGOTTI.

*ICJ* Thibault ESPINASSE, Samuel BERNARD, Philippe MICHEL, Vitaly VOLPERT.

*INRIA* Mostafa ADIMY.

*CHU De Rouen Unité INSERM 1018, CESP* Jacques BENICHOU.

*CHU De Rouen LIMICS INSERM U1142, Université de Rouen/ Sorbonne Université* Stéfan DARMONI.

*CHU de NICE, Université de Nice* Pascal STACCINI.