

Post operative acute kidney injury in abdominal Surgeries – A retrospective analysis of single center in western India.

**ABSTRACT:**

**AIM:**

The aim of our study was to evaluate the incidence and causative factors for acute kidney injury in abdominal surgeries.

**Material and Methods:**

All the abdominal surgeries performed between April 2018 to December 2020, in our institution have been analyzed for acute kidney injury. Acute kidney injury defined according to acute kidney injury network classification. Categorical variables were evaluated by chi-square t-test or fisher's t-test wherever appropriate and continuous variables by Mann Whitney U test for nonparametric data and student t-test for parametric test after skewness and kurtosis analysis. Statistical analysis was done using SPSS version 23.  $P < 0.05$  was considered statistically significant.

**Results:**

We performed 402 gastrointestinal and hepatobiliary surgery from April 2018 to December 2020. After exclusion 372 patients were included in the study population. 20 patients (5.37%) were defined as having acute kidney injury according to acute kidney injury network classifications. On univariate analysis acute kidney injury was

associated with open surgery ( $p= 0.003$ ), Intraoperative hypotension ( $p<0.001$ ), Colorectal surgeries ( $p<0.0001$ ), Emergency surgery ( $p=0.028$ ), CDC grade of surgery ( $p<0.001$ ), increased used to blood products ( $p=0.001$ ), higher ASA grade ( $p<0.0001$ ), increased operative time( $p<0.0001$ ). On multivariate logistic regression analysis higher ASA grade ( $p<0.0001$ ) and increased operative time (0.049) independently predicted acute kidney injury. Acute kidney injury was also significantly associated with 90 days mortality. ( $p= <0.0001$ ).

### **Conclusion:**

Post-operative acute kidney injury was associated with significant mortality in abdominal surgery. Higher ASA grades and increased operative time predicted acute kidney injury.

## **Background:**

Post Operative Acute kidney injury is one of the very common post-operative complications [1]. Many studies have shown that postoperative acute kidney injury is associated with other morbidities and mortalities. [2,3,4,5].

Very few studies have evaluated the risk of acute kidney injury in abdominal surgeries in the Indian population.

## **Aim of the study:**

The aim of this study was to evaluate the incidence and risk factors of acute kidney injury retrospectively from our data of abdominal surgeries.

## **Material and Methods:**

### **Inclusion criteria:**

All patient who underwent gastrointestinal and hepatobiliary surgeries.

### **Exclusion criteria:**

- Patients who had acute kidney injury preoperatively
- Patients who were on dialysis before surgery

- Patients who died on postoperative day 1, before Acute Kidney Injury criteria are fulfilled.

All the gastrointestinal surgeries performed from April 2018 to December 2020 in our institution have been analyzed for acute kidney injury.

#### **Acute kidney injury definition:**

Acute kidney injury defined according to acute kidney injury network classification. [6,7]. Any grade of acute kidney injury was considered significant.

Preoperative and Intraoperative factors were analyzed for the development of acute kidney injury.

#### **Statistical analysis:**

Analysis of means or medians were selected according to skewness and standard error of skewness and kurtosis and standard error of kurtosis analysis. Categorical variants were analyzed using the chi-square test or fisher t-test where ever appropriate. Continuous variables were analyzed using the Mann-Whitney U test.

A p-value of less than 0.05 was considered significant. Multivariate analysis was done using a logistic regression method. SPSS (IBM) version 23 was used for statistical analysis.

We also prepared the Kaplan Meier survival curve with log-rank analysis to compare 90 days survival rates in patients with or without AKI.

#### **Results:**

We performed 402 gastrointestinal and hepatobiliary surgery from April 2018 to December 2020. After applying exclusion criteria 372 patients were included in the study. 26 patients had preoperative acute kidney injury, 4 patients were on dialysis and one patient died on postoperative day 0 and hence excluded from the study. Various type of abdominal surgeries performed is described in table 1.

20 patients (5.3%) were defined as having acute kidney injury according to acute kidney injury network classifications. [6,7]. [Figure 1]

On univariate analysis acute kidney injury was associated with open surgery ( $p=0.003$ ), Intra operative hypotension ( $p < 0.001$ ), CDC grade of surgery ( $p<0.0001$ ) [8], Colorectal Surgeries ( $p< 0.001$ ), emergency surgeries ( $p=0.028$ ), increased used of blood products ( $p=0.001$ ), higher ASA grade ( $p<0.0001$ ), increased operative time ( $p<0.0001$ ). [Table 2]

On multivariate logistic regression analysis higher ASA grade ( $p=0.001$ , odds ratio 15.05, 95% confidence interval 4.05-56.20) and increased operative time ( $p=0.049$ , odds ratio 1.005, 95% confidence interval 1.001-1.015) independently predicted acute kidney injury. [Table 3]

Acute kidney injury was also significantly associated with 90 days mortality. ( $p=<0.0001$ )

On Kaplan Meier, survival analysis patients with acute kidney injury had significantly less 90 days survival than patients without acute kidney injury. [Figure 2].

## DISCUSSION:

Acute kidney injury (AKI) is a common complication in patients undergoing major Gastrointestinal and hepatobiliary surgery. Various studies stated the incidence of AKI after major abdominal surgery may go up to 35%. Several patient-related, procedure-related factors for AKI. AKI was associated with increased incidence of morbidity and mortality in various studies. [8,9]

The aim of our study was to evaluate the incidence and various factors associated with Acute kidney injury. Two criteria for diagnosing acute kidney injury are widely used one is RIFLE criteria and the other is Acute Kidney Injury Network criteria. [6,10]. We used Acute Kidney Injury Network criteria to diagnose acute kidney injury network and we included all the grades of acute kidney injury network classification in our analysis. [Figure 2]

The overall incidence of acute kidney injury in our cohort was 5.3%. Cho et al. reported 7.6 percent acute kidney injury after HPB surgeries. [9] Meersch et al. reported a high incidence of acute kidney injury.

Acute kidney injury in our study was significantly associated with mortality. Literature also shows that acute kidney injury is associated with high mortality. [9,10,11,12,13].

On univariate analysis in our study open surgeries, intraoperative hypotension, higher ASA (American Society of anesthesiology) grade, higher CDC wound grade, increase blood product requirement, colorectal surgeries, emergency surgeries, and increased operative time were associated with the development of acute kidney injury. Hobson et al. studied various risk factors associated with perioperative risk factors and

showed a previous history of chronic kidney disease and hemoglobin level was associated with postoperative acute kidney injury. [14] In our study increase, blood product required was associated with acute kidney injury. Lim et al. suggested that major hepatectomy, increase meld score, advanced age, and prolonged operative duration were associated with acute kidney injury.[15]

Various studies showed that intraoperative hypotension was associated with post-operative acute kidney injury.[16,17,18] In our study also intraoperative hypotension was associated with acute kidney injury in univariate analysis however it did not independently predict acute kidney injury on multivariate analysis.

In the multivariate analysis in our study higher American society of anesthesiology score ( $p < 0.001$ ) and increased operative time ( $p=0.015$ ) were associated with acute kidney injury Literature also supports these findings. [19,20]

In our study, acute kidney injury was associated with increased hospital stay which is also supported by the literature. [21,22]

Being a retrospective analysis, our study has inherent limitations associated with retrospective studies. The number of patients who developed acute kidney injury was low in our studies and that may be the cause of the wide confidence interval of odds ratios after multivariate analysis. The effect size of operative time in predicting acute kidney injury was very limited and that is why it was only marginally significant, higher sample size may change this finding. However, the ASA score was highly significant with a very high odds ratio in predicting acute kidney injury and we believe this finding may not change with increasing sample size. More studies with a higher number of patients are required to confirm our findings. Our earlier data with a limited number of patients (23) also showed Higher ASA scores and increased operative time predicted postoperative acute kidney injury but in that data, operative

time was highly significantly associated ( $p=0.015$ ) with postoperative acute kidney injury but in this updated data it is just borderline significant with p-value of 0.049 and lower limit of 95% confidence interval of odds ratio 1.0. ASA retained its very high significant level with  $p\text{-value} < 0.0001$ . This shows the importance of sample size and the need for studies with higher sample sizes and adequate power.

In conclusion, postoperative acute kidney injury was associated with significant mortality in gastrointestinal and hepatobiliary surgery. Higher ASA grades and increased operative time independently predicted acute kidney injury in our data.

#### References:

1. Park JT. Postoperative acute kidney injury. *Korean J Anesthesiol.* 2017 Jun;70(3):258-266.
2. Chertow GM, Levy EM, Hammermeister KE, Grover F, Daley J. Independent association between acute renal failure and mortality following cardiac surgery. *Am J Med.* 1998;104:343–348.
3. Mangano CM, Diamondstone LS, Ramsay JG, Aggarwal A, Herskowitz A, Mangano DT. Renal dysfunction after myocardial revascularization: risk factors, adverse outcomes, and hospital resource utilization. *The Multicenter*



- Study of Perioperative Ischemia Research Group. *Ann Intern Med.* 1998;128:194–203.
4. Thakar CV, Liangos O, Yared JP, Nelson D, Piedmonte MR, Hariachar S, et al. ARF after open-heart surgery: Influence of gender and race. *Am J Kidney Dis.* 2003;41:742–751.
  5. Biteker M, Dayan A, Tekkeşin Aİ, Can MM, Taycı İ, İlhan E, et al. Incidence, risk factors, and outcomes of perioperative acute kidney injury in noncardiac and nonvascular surgery. *Am J Surg.* 2014;207:53–59.
  6. Mehta RL, Kellum JA, Shah SV, et al. Acute Kidney Injury Network: report of an initiative to improve outcomes in acute kidney injury. *Crit Care.* 2007;11(2):R31.
  7. Kellum JA. Diagnostic Criteria for Acute Kidney Injury: Present and Future. *Crit Care Clin.* 2015;31(4):621–632. doi:10.1016/j.ccc.2015.06.001
  8. Surgical Site Infection (SSI) Event: Center for Disease Control. 2010. <http://www.cdc.gov/nhsn/PDFs/pscManual/9pscSSIcurrent.pdf?agree=yes&next=Accept>. Updated January 2015. Accessed March 3, 2015.
  9. Cho E, Kim SC, Kim MG, Jo SK, Cho WY, Kim HK. The incidence and risk factors of acute kidney injury after hepatobiliary surgery: a prospective observational study. *BMC Nephrol.* 2014;15:169.
  10. Bellomo R, Ronco C, Kellum JA, Mehta RL, Palevsky P: Acute Dialysis Quality Initiative workgroup: acute renal failure – definition, outcome measures, animal models, fluid therapy and information technology needs: the Second International Consensus Conference of the Acute Dialysis Quality Initiative (ADQI) Group. *Crit Care* 2004, 8: R204-R212.

11. Meersch, Melanie MD; Schmidt, Christoph MD; Zarbock, Alexander MD Perioperative Acute Kidney Injury: An Under-Recognized Problem, *Anesthesia & Analgesia*: October 2017 - Volume 125 - Issue 4 - p 1223-1232
12. Lei VJ, Luong T, Shan E, et al. Risk Stratification for Postoperative Acute Kidney Injury in Major Noncardiac Surgery Using Preoperative and Intraoperative Data. *JAMA Netw Open*. 2019;2(12):e1916921.
13. Kim CS, Oak CY, Kim HY, et al. Incidence, predictive factors, and clinical outcomes of acute kidney injury after gastric surgery for gastric cancer. *PLoS ONE*. 2013;8:e82289. doi: 10.1371/journal.pone.0082289.
14. Hobson C, Ruchi R, Bihorac A. Perioperative Acute Kidney Injury: Risk Factors and Predictive Strategies. *Crit Care Clin*. 2017;33(2):379–396.
15. Lim C, Audureau E, Salloum C, et al. Acute kidney injury following hepatectomy for hepatocellular carcinoma: incidence, risk factors and prognostic value. *HPB (Oxford)*. 2016;18(6):540–548.
16. Hallqvist L, Granath F, Huldt E, Bell M. Intraoperative hypotension is associated with acute kidney injury in noncardiac surgery: An observational study. *Eur J Anaesthesiol*. 2018;35(4):273–279.
17. Sun LY, Wijesundera DN, Tait GA, Beattie WS. Association of intraoperative hypotension with acute kidney injury after elective noncardiac surgery. *Anesthesiology*. 2015;123(3):515–523.
18. Onuigbo MA, Agbasi N. Intraoperative hypotension - a neglected causative factor in hospital-acquired acute kidney injury; a Mayo Clinic Health System experience revisited. *J Renal Inj Prev*. 2015;4(3):61–67. Published 2015.
19. Abelha FJ, Botelho M, Fernandes V, Barros H. Determinants of postoperative acute kidney injury. *Crit Care*. 2009;13(3):R79.

20. Long TE, Helgason D, Helgadóttir S, et al. Acute Kidney Injury After Abdominal Surgery: Incidence, Risk Factors, and Outcome. *Anesth Analg*. 2016;122(6):1912–1920.
21. Causey MW, Maykel JA, Hatch Q, Miller S, Steele SR. Identifying risk factors for renal failure and myocardial infarction following colorectal surgery. *J Surg Res*. 2011;170:32–37.
22. Lee EH, Kim HR, Baek SH, et al. Risk factors of postoperative acute kidney injury in patients undergoing esophageal cancer surgery. *J Cardiothorac Vasc Anesth*. 2014;28:948–954.
23. Vasavada bb, Patel H. Post Operative Acute Kidney Injury in Gastro Intestinal and Hepatobiliary surgery in a tertiary centre in western India- A Retrospective analysis. Accepted. *Surgical chronicles*..

TYPE OF SURGERIES	NUMBERS
UPPER GI SURGERIES	17
SMALL BOWEL SURGERIES	47
HPB SURGERIES	212

COLORECTAL SURGERIES	57
HERNIA	39

Table 1: Types of Abdominal surgeries.

FACTORS	ACUTE KIDNEY INJURY (AKI) (N=20)	NO ACUTE KIDNEY INJURY (N=352)	P VALUE
AGE (Median/range)	58/(34-80)	54/(7-84)	0.122
SEX (M/F) (211/161)	(12/8)	199/153	0.760
Malignancy (73)	6	67	0.247
Intra Operative hypotension (n=24)	7	17	<0.001
Emergency Surgeries (n=67)	7	60	0.028
HPB surgeries (214)	13	201	0.643
Colorectal (56)	4	52	<0.0001
Small bowel (19)	3	16	0.715

Upper GI surgery	0	19	1
Hernia	0	37	0.239
OPERATIVE TIME (Median/range)	180 (60-600)	90 (15-800)	<0.0001
ASA (Mean/range)	4 (1-4)	2.00/(1-4)	<0.0001
BLOOD PRODUCT (Median/range)	1.0/(0-15)	0.00/(0-40)	0.001
GRADE OF SURGERY (median/range)	3.0/(2-4)	2.0/(1-4)	<0.0001
Open Surgeries. (n= 206)	16	190	0.003

TABLE: 2 UNIVARIATE ANALYSIS OF ACUTE KIDNEY INJURY.

Factor	P value	Odds ratio	95% confidence interval
Blood products	0.223	0.828	0.61-1.12
ASA	0.0001	15.10	4.05-56.2
Operative time	0.049	1.005	1.000-1.011
Open Surgery	0.697	1.50	0.194-11.63

Grade of surgery	0.582	0.698	0.194- 2.51
Intra operative Hypotension	0.195	2.83	0.585-13.72
Emergency Surgery	0.358	0.433	0.078-2.58
Colorectal surgeries	0.680	1.37	0.301-6.298

TABLE 3: MULTIVARIATE ANALYSIS OF ACUTE KIDNEY INJURY

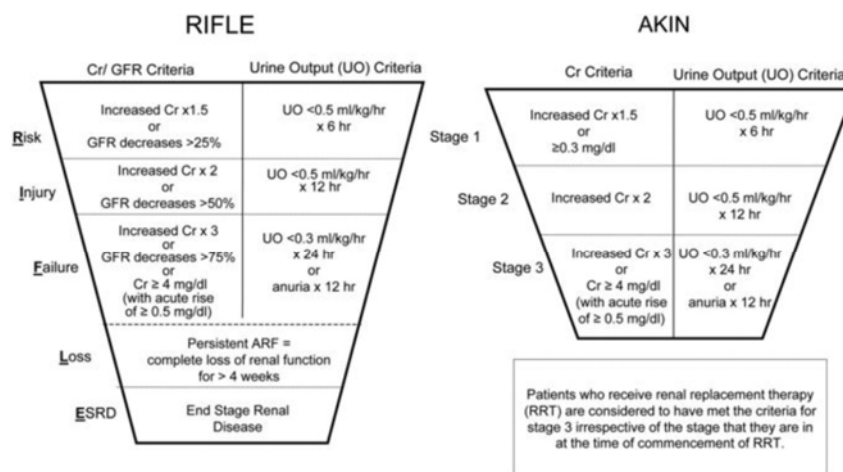


Figure 1. RIFLE and AKIN classifications for acute kidney injury. Risk–Injury–Failure–Loss–End stage renal disease (RIFLE) and Acute Kidney Injury Network (AKIN) classifications for acute kidney injury (adapted from [6,10]).

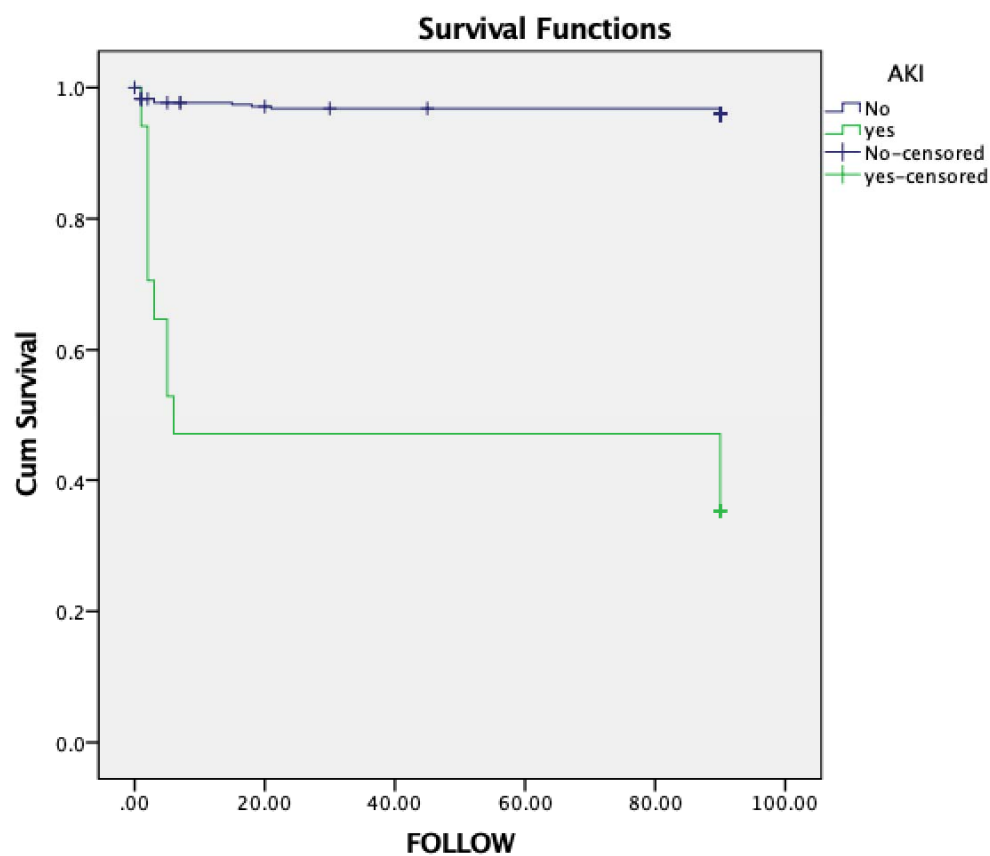


Figure:2. Kaplan meier survival analysis showed 90 days survival was significantly less in patient who developed acute kidney injury. ( $p < 0.0001$ , log rank analysis)

