

Paediatric/young versus adult patients with long QT syndrome or catecholaminergic polymorphic ventricular tachycardia

Sharen Lee *¹, Jiandong Zhou *², Kamalan Jeevaratnam PhD³, Wing Tak Wong PhD⁴, Ian Chi Kei Wong PhD FRCPCH^{5,6}, Chloe Mak MD PhD FRCPATH⁷, Ngai Shing Mok MBBS FRCP⁸, Tong Liu MD PhD⁹, Qingpeng Zhang PhD², Gary Tse PhD FACC FRCP *⁹

¹ Laboratory of Cardiovascular Physiology, Li Ka Shing Institute of Health Sciences, Hong Kong, SAR, China

² School of Data Science, City University of Hong Kong, Hong Kong SAR, China

³ Faculty of Health and Medical Sciences, University of Surrey, Guildford, UK

⁴ State Key Laboratory of Agrobiotechnology (CUHK), School of Life Sciences, Chinese University of Hong Kong, Hong Kong SAR, China

⁵ Centre for Safe Medication Practice and Research, Department of Pharmacology and Pharmacy, Li Ka Shing Faculty of Medicine, The University of Hong Kong, Hong Kong, China

⁶ School of Pharmacy, University College London, London, United Kingdom

⁷ Department of Pathology, Hong Kong Children's Hospital, Hong Kong SAR, China

⁸ Department of Medicine and Geriatrics, Princess Margaret Hospital, Hong Kong SAR, China

⁹ Tianjin Key Laboratory of Ionic-Molecular Function of Cardiovascular disease, Department of Cardiology, Tianjin Institute of Cardiology, Second Hospital of Tianjin Medical University, Tianjin 300211, China

* joint first authors

Correspondence to:

Dr. Qingpeng Zhang, PhD

School of Data Science, City University of Hong Kong, Hong Kong SAR, P.R. China

Email: qingpeng.zhang@cityu.edu.hk

Dr. Gary Tse, PhD, FRCP

Tianjin Key Laboratory of Ionic-Molecular Function of Cardiovascular Disease, Department of Cardiology, Tianjin Institute of Cardiology, Second Hospital of Tianjin Medical University, Tianjin 300211, China

Cardiovascular Analytics Group, Hong Kong, SAR, China

Faculty of Health and Medical Sciences, University of Surrey, Guildford, UK

Email: gary.tse@doctors.org.uk

Funding: (None)

Disclosures: (None)

Abstract

Introduction: Long QT syndrome (LQTS) and catecholaminergic ventricular tachycardia (CPVT) are less prevalent cardiac ion channelopathies than Brugada syndrome in Asia. The present study compared paediatric/young and adult patients with these conditions.

Methods: This was a territory-wide retrospective cohort study of consecutive patients diagnosed with LQTS and CPVT attending public hospitals in Hong Kong. The primary outcome was spontaneous ventricular tachycardia/ventricular fibrillation (VT/VF).

Results: A total of 142 LQTS (mean onset age= 27±23 years old) and 16 CPVT (mean presentation age=11±4 years old) patients were included. For LQTS, arrhythmias other than VT/VF (HR=4.67, 95% confidence interval=[1.53-14.3], p=0.007), initial VT/VF (HR=3.25 [1.29-8.16], p=0.012) and Schwartz score (HR=1.90 [1.11-3.26], p=0.020) were predictive of the primary outcome for the overall cohort, whilst arrhythmias other than VT/VF (HR=5.41 [1.36-21.4], p=0.016) and Schwartz score (HR=4.67 [1.48-14.7], p=0.009) were predictive for the adult subgroup (>25 years old; n=58). All CPVT patients presented before the age of 25 but no significant predictors of VT/VF were identified. A random survival forest model identified initial VT/VF, Schwartz score, initial QTc interval, family history of LQTS, initially asymptomatic, and arrhythmias other than VT/VF as the most important variables for risk prediction in LQTS, and initial VT/VF/sudden cardiac death, palpitations, QTc, initially symptomatic and heart rate in CPVT.

Conclusion: Clinical and ECG presentation vary between the pediatric/young and adult LQTS population. All CPVT patients presented before the age of 25. Machine learning models achieved more accurate VT/VF prediction.

Introduction

Cardiac ion channelopathies predispose to the development of spontaneous ventricular tachycardia/ fibrillation (VT/VF) and sudden cardiac death (SCD). Of these, long QT syndrome (LQTS) and catecholaminergic ventricular tachycardia (CPVT) are less prevalent conditions compared to Brugada syndrome (BrS) in Asia.¹ In LQTS, the characteristic feature is electrocardiographic (ECG) QT prolongation, reflecting delayed repolarization at the cellular level. There are at least 17 subtypes, which are caused by mutations in sodium, potassium, calcium channels, or other ancillary proteins. By contrast, CPVT is usually precipitated by exercise or distress, which results in bidirectional VT. It is typically caused by mutations in either ryanodine receptor 2 (RyR2) or calsequestrin 2 (CASQ2).

The age of presentation differs between the different cardiac ion channelopathies. Amongst the current 17 LQTS subtypes, the most prevalent type 1 LQTS usually presents in late childhood, whilst type 2 more commonly presents within 9 months post-partum;¹ It should also be noted that recent works have suggested that the majority of rare genetic causes have, at best, a weak genotype-phenotype association.² CPVT often presents in the first two decades³. Due to the small population of pediatric patients, it can be challenging to identify the specific differences between the pediatric and adult populations. As a result, the application of adult-based risk stratification criteria upon the pediatric population may result in misinterpretation of SCD risk. Therefore, the present study aims to demonstrate the difference in clinical and ECG presentation between pediatric/young and adult LQTS and CPVT patients.

Methods

Study Population

This study was approved by The Joint Chinese University of Hong Kong – New Territories East Cluster Clinical Research Ethics Committee. The cohort included consecutive patients diagnosed with LQTS or CPVT between January 1st, 1997 to June 20th, 2020 in public hospitals of Hong Kong. Centralized electronic health records from the Hospital Authority were reviewed for patient identification and data extraction. The diagnoses of the respective ion channelopathies were made initially by the case physicians. They were confirmed by G.T. and N.S.M. through the review of case notes, documented ECGs, diagnostic test results, and genetic reports. Diagnosis of LQTS was made if the disease was not induced by drugs, hypokalemia or hypomagnesemia, and fulfill one of the following: 1) Schwartz score greater or equal to 3.5; 2) positive for LQTS-related mutations on genetic testing; 3) initial QTc interval greater than 500 ms. All LQTS patients, except for one Japanese immigrant, were Han Chinese. Diagnosis of CPVT was established based on the exercise treadmill test, adrenaline challenge test, or genetic testing by the participating institution at the time of entry. All CPVT patients were Han Chinese.

Clinical and Electrocardiographic Data Collection

The baseline clinical data extracted from the electronic health records include: 1) sex; 2) age of first characteristic ECG presentation and last follow-up; 3) follow-up duration; 4) family history of SCD and the specific ion channelopathy; 5) syncope manifestation and its frequency; 6) presentation of sustained VT/VF and its frequency; 7) performance of electrophysiological study (EPS), 24-hours Holter study, ion channelopathy-specific genetic testing, and the respective results; 8) performance of echocardiogram; 9) presence of other arrhythmias; 9) implantation of implantable cardioverter-defibrillator (ICD); 10) occurrence,

cause and age of death; 11) period between the initial presentation of characteristic ECG and the first post-diagnosis VT/VF episode; 12) initial disease manifestation (asymptomatic, syncope, VT/VF). In the present study, symptoms refer to syncope or VT/VF, thus asymptomatic indicates freedom from either presentation. Other arrhythmias include sick sinus syndrome, bradycardia, atrioventricular block, atrial tachyarrhythmias, and supraventricular tachyarrhythmias. Positive EPS is defined as the induction of spontaneous VT/VF that either sustained a minimum of 30 seconds or produced hemodynamic collapse.

The following additional information was extracted from the LQTS patients: 1) type of LQTS; 2) QTc interval at the initial presentation of QTc prolongation; 3) performance and the result of treadmill test, with a positive test defined as the presence of exercise-recovery-induced QT prolongation; 4) Schwartz score. It should be noted that the genotype-phenotype association in rare genetic causes can be weak, thus the type of LQTS is noted for documentation purposes. A positive result in the treadmill test is defined as the presence of exercise-recovery induced QT prolongation, ST depression, syncope, or VT/VF during the test. Schwartz's score was calculated based on the clinical and ECG data documented in case records using the original definitions ⁴:

- 1) ECG criteria: QTc by Bazett's formula ≥ 480 ms (3 points), $=460-479$ ms (2 points), $=450-459$ ms (males) (1 point) and ≥ 480 ms during 4th minute of recovery from exercise stress test (1 point), torsades de pointes (2 points), T-wave alternans (1 point), notched T-wave in 3 leads (1 point), low heart rate for age (0.5 points)
- 2) Clinical criteria: syncope with stress (2 points), syncope without stress (1 point)
- 3) Family history: family history with definite LQTS (1 point), unexplained sudden cardiac death at age <30 years in the immediate family (0.5 points)

The following automated measurements were extracted from baseline ECGs: 1) heart rate; 2) P wave duration (PWD) and PR interval; 3) QRS duration; 4) QT and QTc interval; 5) P, QRS and T wave axis; 6) amplitude of R and S wave from leads V5 and V1 respectively; 7) presence of 1st degree atrioventricular block, defined as PR-interval greater than 200ms; 8) presence of interventricular delay, defined as QRS-interval greater or equal to 110ms. Baseline ECG is the documented ECG taken at or the earliest after the initial characteristic ECG presentation. All ECG parameters, except for the amplitude of R- and S-wave from leads V5 and V1 respectively, were averaged across the 12 leads.

Classification and Statistical Analysis

The study population is classified into pediatrics and adult based on the age of onset for the ion channelopathy-characteristic ECG. Patients less than or equal to age 25 were selected into the pediatrics subgroup or otherwise selected into the adult subgroup. Subgroup differences of categorical variables were compared through Fisher's exact test and reported as total number (percentage), whilst discrete and continuous variables were compared by Kruskal-Wallis one-way ANOVA and expressed as mean±standard deviation. The mean annual VT/VF incidence rate of each subgroup is calculated by first obtaining the patient-specific rate through dividing the total number of sustained VT/VF events by the follow-up period, then average the rates within the subgroup. Statistical significance is defined as P-value < 0.05. The difference in the duration of post-diagnosis VT/VF-free survival between the pediatric and adult subgroup is compared quantitatively by both the log-rank test and Cox proportional hazard ratio regression, and qualitatively by Kaplan-Meier survival curve.

Both univariate and multivariate Cox regression was used to identify independent predictors for a shorter time to first post-diagnosis sustained VT/VF. The hazard ratio (HR)

and 95% confidence interval (CI) are reported for Cox regression. Due to the limited VT/VF event within the pediatric subgroup in the LQTS cohort, Cox regression was performed for the overall cohort and the adult subgroup. Univariate predictors with P-value <0.10 were selected for the multivariate analysis. Separate models with and without the inclusion of predictors from the baseline ECG were established. All statistical analysis was performed using R Studio (Version: 1.3.1073).

Development of a machine learning survival analysis model

Survival analysis models are used to predict the risk of future time-to-events. Commonly, the default choice is Cox regression because of its convenience. Random Survival Forest (RSF) is a class of survival analysis models that use data on the life history of patients (the outcome or response) and their meaningful characteristics (the predictors or variables)⁵. RSF extends traditional random forests algorithm for a target which is not a class, or a number, but a survival curve. RSF is non-parametric and does not assume proportional risks as in the Cox model. This allows direct learning of the survival patterns between predictors and outcome. RSF bypasses the traditional necessity to impose parametric or semi-parametric assumptions on the underlying distributions of censored data and therefore provides an alternative approach to automatically deal with high-level interactions and higher-order nonlinear terms in variables and achieve much higher accurate survival predictions. The time-to-event prediction task through the RSF model aims to characterize the covariate effects on the time of a future VT/VF event, while capitalizing on meaningful information from censored data when performing learning.

Significant univariate predictors identified by the Cox regression model are used as candidate inputs of the RSF model to predict primary VT/VF outcome. This avoided possible

collinearity and overfitting that may occur if all predictors were included. A variable importance ranking approach was adopted based on standard bootstrap theory to investigate the strength of the associated significant univariate variables to predict VT/VF. Out-of-bag (OOB) method was adopted whenever a bootstrap sample is down with replacement from the training dataset. The importance value for the variable of interest was calculated as the prediction error (squared loss) for the original ensemble event-specific cumulative probability function (obtained when each OOB instance is just dropped down its in-bag competing risks tree) subtracted from the prediction error for the new ensemble obtained using randomizing assignments of the variable ⁶. Variable that were important predictors of VT/VF has a larger importance value, indicating higher predictive strength, whereas non-predictive variables have zero or negative values.

A five-fold cross-validation approach was used to compare the survival prediction performance of the RSF model with the multivariate Cox regression model (both with significant univariate predictors as input). Evaluation measures of precision, recall, Brier score and rank statistics of Harrell's C-index are used to assess the resulting probabilistic risk prediction comparisons. Training and testing of the RSF model for predicting VT/VF were conducted using the *ggRandomForests* R package. Survival estimates were calculated using the Brier score (0=perfect, 1=poor, and 0.25=guessing) based on the inverse probability of censoring weight (IPCW) method ⁷. The cohort was stratified into four groups of 0-25, 25-50, 50-75 and 75-100 percentile values of VT/VF.

Results

Long QT Syndrome: Baseline characteristics

The LQTS cohort consisted of 142 consecutive patients (mean onset age= 27 ± 23 years old; female=60%; mean follow-up period= 98 ± 65 months; initial QTc interval= 504 ± 44 ms), and divided into adult (n=58; mean onset age= 27 ± 23 ; female= 66%; mean follow-up period= 95 ± 67 months; initial QTc interval= 507 ± 51 ms) and pediatric/young subgroup (n=84, mean onset age= 11 ± 7 years; female= 56.0%; mean follow-up period= 91 ± 64 months; initial QTc interval= 501 ± 38 ms) (**Table 1**). All LQTS patients, except for 42 patients were unrelated probands. The 42 patients were from 16 families. There is no significant intergroup difference in patients' sex ($p=0.298$), follow-up duration ($p=0.743$) and initial QTc interval ($p=0.510$). Amongst patients with identifiable subtypes of LQTS, the present cohort consists of: type 1 (n=32), type 2 (n=29), type 3 (n=7), type 5 (n=1), type 8 (n=2), type 9 (n=1), type 16 (n=1). The subgroup differences for family history of LQTS ($p=0.601$) and SCD ($p=0.166$) were insignificant.

In terms of disease manifestation, an initial presentation with syncope was more common in the paediatric/young compared to the adult patients (39% vs. 22%), whereas initial presentation of VT/VF was more common in adults than paediatric/young patients (36% vs. 14%). The adult subgroup was significantly more likely to develop VT/VF ($p < 0.001$), with a greater frequency of sustained VT/VF ($p < 0.001$) and mean annual VT/VF incidence rate (adult= 0.632 ± 1.61 VT/VF per year, pediatric/young= 0.502 ± 3.13 VT/VF per year, $p < 0.001$), which contributed to a greater proportion of adult patients with ICD implanted ($p < 0.0001$) and all-cause mortality ($p=0.032$). Throughout the follow-up period, there is only one case of SCD in the present cohort. 24-hours Holter study ($p=0.008$) and treadmill test ($p < 0.0001$) were more commonly performed amongst the pediatric/young subgroup, but the proportion of patients with positive findings did not differ significantly (arrhythmia in Holter study: $p=0.336$; positive treadmill test: $p=0.112$). Out of the 48 LQTS patients that have undergone exercise stress test, 33 had positive tests.

In terms of baseline ECG indices, the adult subgroup had significantly higher value in the following parameters: 1) PWD ($p=0.019$); 2) PR-interval ($p=0.005$); 3) QRS interval ($p=0.004$); 4) QT interval ($p=0.024$); 5) P axis ($p=0.005$); 6) QRS axis ($p=0.012$). The pediatric/young subgroup had significantly higher heart rate ($p=0.041$), whilst a greater proportion of adult patients suffers from interventricular delay ($p=0.015$).

Long QT Syndrome: Spontaneous VT/VF Predictors

Univariate Cox regression for post-diagnosis VT/VF-free survival demonstrated the following significant predictive variables (**Table 2A**): 1) family history of LQTS (HR=0.359, 95% CI= [0.163, 0.794], $p=0.011$); 2) initial QTc interval (HR=1.01, 95% CI= [1.00, 1.02], $p=0.011$); 3) positive treadmill test ($p=0.086$, 95% CI= [0.009, 0.793], $p=0.030$); 4) occurrence of other arrhythmias (HR=4.50, 95% CI= [2.32, 8.74], $p < 0.0001$); 5) Schwartz score (HR=1.49, 95% CI= [1.08, 2.05], $p=0.015$); 6) initially asymptomatic (HR=0.301, 95% CI= [0.136, 0.662], $p=0.003$); 7) initial presentation of VT/VF (HR=5.80, 95% CI= [2.94, 11.5], $p < 0.0001$); 8) QRS interval (HR=1.03, 95% CI= [1.01, 1.04], $p=0.001$); 9) QTc interval (HR=1.02, 95% CI= [1.01, 1.02], $p < 0.001$); 10) presence of interventricular delay (HR=3.11, 95% CI= [1.37, 7.08], $p=0.007$). Similarly, the significant predictors from the adult subgroup include: 1) presence of other arrhythmias (HR=4.49, 95% CI= [1.85, 10.9], $p=0.001$); 2) Schwartz score (HR=3.76, 95% CI= [1.70, 8.34], $p=0.001$); 3) initially asymptomatic (HR=0.357, 95% CI= [0.129, 0.986], $p=0.047$); 4) initial presentation of VT/VF (HR=2.82, 95% CI= [1.14, 7.03], $p=0.026$); 5) QRS interval (HR=1.03, 95% CI= [1.01, 1.04], $p=0.002$); 6) the presence of interventricular conduction delay (HR=3.60, 95% CI= [1.38, 9.41], $p=0.009$).

The detailed findings from the multivariate Cox regression analysis are shown in **Table 2B and 2C**. Additionally, pediatrics patients were found to have significantly longer VT/VF-free post-diagnosis (HR=0.425, 95% CI= [0.217, 0.832], p=0.013). **Figure 1** displays the significant intergroup difference in the Kaplan Meier survival curve (p=0.009).

Catecholaminergic polymorphic ventricular tachycardia: Baseline characteristics and predictors

The CPVT cohort consists of 16 consecutive patients (mean presentation age= 11±4 years old; female= 50%; mean follow-up period= 116±36 months), all of whom presented below the age of 25 years old (**Table 3**). Twelve patients fulfilled at least two criteria and four patients fulfilled one criterion of the 2013 HRS/EHRA/APHRS expert consensus statement (**Supplementary Table 1**). 15 patients were on beta-blockers, amongst which 11 patients were on nadolol and 3 patients were on propranolol. Of the whole cohort, 15 (93.8%) were initially symptomatic. Ten patients had both PVCs and VT/VF, whereas one patient had PVCs without VT/VF. Genetic tests were performed in 14 patients (87.5%), of which 8 patients (57.1%) tested positive for gene mutations. All mutations involved the RyR2 gene (**Supplementary Table 2**). Two of the mutations, c.12475C>A and c.7420A>G, are novel and have not been described beyond our locality. ICDs were implanted in three patients (18.8%) only. None of the clinical or ECG variables significantly predicted spontaneous VT/VF on Cox regression. By contrast, decision analysis was able to identify the predictive variables. **Figure 2** displays the Kaplan-Meier post-diagnosis VT/VF-free survival curve of the CPVT cohort.

Survival analysis on LQTS and CPVT cohorts using machine learning

For LQTS, the application of random survival forest (RSF) to the cohort data yielded the importance ranking of significant risk predictors (**Table 4**). Initial VT/VF was identified as the most important variable to predict VT/VF outcome, followed by Schwartz score, initial QTc interval, family history of LQTS, initially asymptomatic status, and the presence of arrhythmias other than VT/VF. By contrast, the family history of SCD provided a limited predictive strength. The optimal tree number of RSF to predict VT/VF of LQTS was set to 200, while the number was set to 100 for RSF to predict VT/VF of CPVT through tree number iteration (**Figure 3**). For CPVT, the most predictive five variables in predicting incident VT/VF were initial VT/VF or sudden cardiac death, an initial presentation with palpitations, QTc interval, initially symptomatic and heart rate (**Table 5**). The predicted OOB survivals and cumulative hazards with the RSF model to predict VT/VF in LQTS (*top panel*) and CPVT (*bottom panel*) are shown in **Figure 4**.

The survival functions estimated for each LQTS patient with the RSF model to predict VT/VF are shown in **Figure 5**. The overall ensemble survival is indicated by the red line, whereas the Nelson-Aalen estimator is given by the green line (*top left panel*). Brier score (0=perfect, 1=poor, and 0.25=guessing) stratified by ensemble VT/VF based on the inverse probability of censoring weight (IPCW) method is shown in the *top right panel*. The cohort was stratified into four groups of 0-25, 25-50, 50-75 and 75-100 percentile VT/VF (the overall, non-stratified, Brier score is shown by the red line). A continuous rank probability score (CRPS) given by the integrated Brier score divided by time is shown in the *bottom left panel*, whereas a plot of VT/VF of each individual versus observed time is shown in the *bottom right panel*. Events are shown as blue points, whereas censored observations are shown as red points. The estimates for CPVT patients generated by the RSF model are provided in **Figure 6**.

Finally, the predicted VT/VF survivals of LQTS and CPVT patients using the RSF model are shown in the *top panel* and *bottom panel* of **Figure 7** respectively. The blue curves correspond to censored observations while the red curves correspond to observations experiencing VT/VF events. The survival analysis performance of the RSF model was compared with that of the multivariate Cox model to predict the next VT/VF outcome of LQTS patients in a five-fold cross-validation approach (**Table 6**). The RSF model significantly outperformed the multivariate Cox model (precision: 0.95, recall: 0.93, Brier score: 0.09, Harrell's C-index: 0.91) based on the same inputs of significant univariate predictors. Comparisons were not made for the CPVT cohort because no significant predictors were identified on univariate Cox regression.

Discussion

This is the first territory-wide cohort study from Hong Kong comparing pediatric/young and adult patients suffering from LQTS and CPVT. There are several major findings for the present study: 1) there are significant differences in clinical and ECG presentation amongst adult and pediatric/young LQTS patients; 2) adult LQTS patients have a higher risk for spontaneous VT/VF; 3) similar predictors were found in the overall LQTS cohort and adult subgroup; 4) a nonparametric machine learning survival analysis directly learn automatically deal with high-level interactions and higher-order nonlinear terms in variables and achieve much higher accuracy to predict the incident VT/VF probabilities of LQTS and CPVT patients.

long QT Syndrome

In terms of disease manifestation, an initial presentation with syncope was more common in the paediatric/young compared to the adult patients (39% vs. 22%), whereas initial presentation of VT/VF was more common in adults than paediatric/young patients (36% vs. 14%). Overall, the adult subgroup carried a greater risk for VT/VF occurrence and all-cause mortality. This can be explained by early beta-blocker use amongst paediatrics patients, and the difference in age of peak VT/VF risk between different subtypes of LQTS. For example, whilst patients are most susceptible to spontaneous VT/VF throughout childhood for type 1 LQTS, post-partum females are most vulnerable in type 2 LQTS, and mortality risk is elevated from ages 10 to 59 years in syndromes with SCN5A mutation.^{1,8} The effectiveness of beta-blocker in SCD risk reduction amongst LQTS patients, particularly the pediatric population, is well-demonstrated.⁹ Due to the difficulty in VT/VF risk prediction amongst young LQTS patients, prophylactic beta-blockers are prescribed in the absence of contraindications.¹⁰ Given that non-compliance is a major cause for treatment failure in beta-blocker use, it is speculated that the pediatric/young subgroup may have better compliance with the involvement of parental efforts to reinforce the drug compliance.^{10,11} Surprisingly, a family history of LQTS was found to be protective against VT/VF occurrence during follow-up under univariate analysis, which may be attributed to earlier disease diagnosis and treatment intervention.

Although baseline QTc interval was only predictive of spontaneous VT/VF under univariate analysis, Schwartz score, a diagnostic score of LQTS that accounts for QTc interval and other clinical parameters remained predictive in multivariate analysis. The predictiveness of the Schwartz score suggests that a combination of clinical and ECG indices should be considered holistically in the risk stratification of LQTS. Furthermore, whilst the value of diagnostic criteria in hereditary LQTS is questioned for its low sensitivity in the era of molecular testing, the present finding demonstrates the potential application value of

diagnostic criteria in risk stratification.¹² Additionally, the protective value of positive treadmill results can be explained by that the treadmill stress test is only used in diagnosis for borderline patients, which are inherent of lower risk. Patients of severe phenotype would not have undergone the treadmill stress test, therefore resulted in the falsely protective nature of positive treadmill test results.¹³ Interestingly, 24-hour Holter monitoring and treadmill tests were more frequently performed in the paediatric/young subgroup compared to the adult subgroup in LQTS. We speculate that this may reflect differences in clinical practice for the paediatric versus adult cardiologists.

The significant intergroup differences in ECG indices can be attributed to both the cardiac electrophysiological differences between adult and pediatric/young patients and LQTS-specific age-dependent differences. Increased heart rate and shortened PR interval amongst pediatric patients, in comparison to adults, is normal.¹⁴ There are few studies on ECG changes aside from QTc interval and T-wave abnormalities in LQTS and the potential age-dependent variations in patients' ECG profile have yet to be explored. Atrial enlargement was found to be significantly more common amongst older patients.¹⁵ It has been reported that the use of vectorcardiogram improves the accuracy of QT-interval determination in children, which may be explained by the greater ability of vectorcardiogram to capture the cardiac axis that possibly deviates from the norm.¹⁶ Further research is needed to explore the age-dependent difference in ECG profiles of LQTS patients and its potential application in risk stratification. The occurrences of atrial arrhythmias and spontaneous VT/VF are closely linked. Altered atrial electrophysiology is found in LQTS, with a similar arrhythmic substrate of delayed repolarization occurring in both the atria and the ventricles.^{17,18} The shortening of the diastolic interval during atrial tachyarrhythmia can occasionally lead to greater spatial dispersion of action potential duration, which can produce the ventricular substrate that promotes reentry.¹⁹⁻²¹

Catecholaminergic polymorphic ventricular tachycardia

CPVT is a rare ion channelopathy characterized by exercise-induced bidirectional VT. International registry studies on European and North American patients have reported that there is a malignant arrhythmic phenotype associated with this disease with significant delays between initial presentation and subsequent diagnosis of around six months^{22,23}. By contrast, the epidemiology and characteristics of studies in Asia are limited, often to single-center studies, case series or case reports. Recently, we have examined sudden arrhythmic death syndrome in young patients, but identified only two cases of CPVT locally²⁴. In this multi-center study, we reported the findings of 16 patients, confirming a highly arrhythmic phenotype, with 10 patients with VT/VF at presentation or on follow-up. However, we were unable to identify any significant predictors of VT/VF, which likely reflects the small sample size included.

Strengths and limitations

The major strengths of the present study include 1) predictors of post-diagnosis VT/VF free survival were derived for adult and pediatric/young patients; 2) holistic differences in clinical and ECG aspects of adult and pediatric/young patients were evaluated; 3) the study cohort was followed-up for a substantial length of time.

Several limitations should be noted for the present study. First, the retrospective nature of the study is inherently subjected to selection and information bias. However, consultations were performed at least annually for most patients, hence the patients were closely followed-up. Also, it should be noted that the documented syncope may not be of cardiogenic origin, hence it may be unrelated to the ion channelopathy. Secondly, the

predictive value of predictors is limited by the relatively small sample size, in particular for CPVT, which is the rarest of the ion channelopathies studied here. Thirdly, changes in guidelines for investigations and diagnostic tests throughout follow-up introduced inevitable inconsistency in indications for different tests. Due to the limited availability of public genetic services, not all patients with ion channelopathies have undergone genetic screening, and hence genotype-phenotype correlations could not be established with greater degrees of certainty. Genetic testing has evolved over the past years. Before 2014, testing was limited to a panel of six genes for LQTS (KCNQ1, KCNH2, SCN5A, KCNE1, KCNE2, KCNJ2), and sequencing of exon hotspots for CPVT (exons 1, 8, 14, 15, 44, 46, 47, 49, 88, 93, 95, 97, 101, 102, 103, 104, 105). After 2014, next-generation sequencing (NGS) was offered. We recognize the differences in methodology make the interpretation difficult, and we cannot exclude the possibility of false-negative if NGS was applied to all cases. However, the retrospective nature review of case notes means that we are not able to elucidate this further in our study. Future studies should apply NGS to all patients to identify additional gene mutations responsible for LQTS or CPVT.

Conclusion

Clinical and ECG presentation of LQTS vary between the pediatric/young and adult LQTS population. All CPVT patients in our region presented before the age of 25. Risk stratification and management strategies against young patients should take into consideration the difference between pediatric and adult patients and adopt an individualized approach. Machine learning models achieved more accurate VT/VF prediction.

Table 1. Baseline characteristics of the long QT syndrome cohort

Characteristic	Overall (n=142)	Adult (n=58)	Pediatric/Young (n=84)	P-Value
Clinical Characteristics				
Female	85 (59.9)	38 (65.5)	47 (56.0)	0.298
Onset Age	27±23	50±16	11±7	<0.0001
Current Age	34±23	58±16	18±10	<0.0001
Initial QTc Interval	504±44	507±51.2	501±38	0.510
Family History of LQTS	56 (39.4)	21 (36.2)	35 (41.7)	0.601
Family History of SCD	22 (15.5)	12 (20.7)	10 (11.9)	0.166
Initial Asymptomatic	63 (44.4)	24 (41.4)	39 (46.4)	0.608
Initial Syncope	46 (32.4)	13 (22.4)	33 (39.3)	0.045
Initial VT/VF	33 (23.2)	21 (36.2)	12 (14.3)	0.004
Syncope	61 (43.0)	24 (41.4)	37 (44.0)	0.863
Syncope Frequency	0.96±1.44	0.81±1.25	1.06±1.56	0.519
VT/VF	52 (36.6)	32 (41.4)	20 (23.8)	<0.001
Sustained VT/VF Frequency	2.3±13.0	2.6±9.7	2.1±14.9	<0.001
Annual VT/VF Incidence Rate	0.6±2.6	0.6±1.6	0.5±3.1	<0.001
EPS	6 (4.2)	3 (5.2)	3 (3.6)	0.688
Positive EPS	4 (66.7)	2 (66.7)	2 (66.7)	1.00
ICD	51 (35.9)	33 (56.9)	18 (21.4)	<0.0001
Holter	53 (35.9)	14 (24.1)	39 (46.4)	0.008
Arrhythmia in Holter Study	33 (62.3)	11 (78.6)	22 (56.4)	0.336
Other Arrhythmias	29 (20.4)	13 (22.4)	16 (19.0)	0.675
Genetic Test	92 (64.8)	23 (39.7)	69 (82.1)	0.069
Positive Genetic Test	77 (83.7)	19 (82.6)	58 (84.1)	1.00
Treadmill Test	48 (33.8)	6 (10.3)	42 (50.0)	<0.0001
Positive Treadmill Test	33 (68.8)	3 (50.0)	30 (71.4)	0.112
Schwartz Score	4.24±1.13	4.20±1.11	4.27±1.15	0.723
Death	9 (6.34)	7 (12.1)	2 (2.38)	0.032
Follow-Up Duration	97.7±65.0	95.2±67.3	91.1±63.7	0.743
Baseline ECG Characteristics				
Heart Rate	76±24	70±19	82±27	0.041
P-Wave Duration	104±16	110±20	99±9	0.019
PR Interval	161±30	169±28	155±30	0.005
QRS Interval	97±22	104±26	90±15	0.004
QT Interval	445±70	462±57	432±79	0.024
QTc Interval	489±44	492±45	487±44	0.438
P Axis	55±41	66.7±49	44±30	0.005
QRS Axis	56±59	48±73	65±39	0.012

T axis	53±55	68.1±69	39±32	0.090
Lead V5 R Wave Amplitude	1.17±0.65	1.15±0.82	1.18±0.42	0.361
Lead V1 S Wave Amplitude	0.70±0.42	0.65±0.42	0.74±0.42	0.298
1 st Degree AV Block	7 (4.9)	5 (8.6)	2 (2.4)	0.236
Interventricular Delay	17 (12.0)	13 (22.4)	4 (4.8)	0.015

Table 2A. Univariate predictors of post-diagnosis VT/VF-free survival in long QT syndrome

Predictor	Overall			Adult		
	HR	95% CI	P-Value	HR	95% CI	P-Value
Female	1.13	[0.568, 2.25]	0.730	1.37	[0.518, 3.60]	0.529
Onset Age	1.01	[0.997, 1.02]	0.146	0.992	[0.963, 1.02]	0.573
Family History of LQTS	0.359	[0.163, 0.794]	0.011	0.427	[0.154, 1.19]	0.103
Family History of SCD	0.148	[0.020, 1.08]	0.060	0.162	[0.022, 1.22]	0.077
Initial Asymptomatic	0.301	[0.136, 0.662]	0.003	0.357	[0.129, 0.986]	0.047
Initial Syncope	0.721	[0.345, 1.50]	0.383	1.08	[0.411, 2.83]	0.878
Initial VT/VF	5.80	[2.94, 11.5]	<0.0001	2.82	[1.14, 7.03]	0.026
Initial QTc Interval	1.01	[1.00, 1.02]	0.007	1.01	[0.997, 1.01]	0.227
Positive Treadmill Test	0.086	[0.009, 0.793]	0.030	/	/	/
Positive EPS	0.377	[0.039, 3.63]	0.399	1.09	[0.089, 13.3]	0.948
Arrhythmia in Holter Study	1.10	[0.330, 3.67]	0.877	0.449	[0.075, 2.69]	0.381
Other Arrhythmias	4.50	[2.32, 8.74]	<0.0001	4.49	[1.85, 10.9]	0.001
Schwartz Score	1.49	[1.08, 2.05]	0.015	3.76	[1.70, 8.34]	0.001
Follow-Up Duration	0.999	[0.993, 1.00]	0.634	0.999	[0.992, 1.01]	0.787
Baseline ECG Characteristics						
Heart Rate	1.00	[0.987, 1.02]	0.743	1.01	[0.983, 1.03]	0.562
P-Wave Duration	0.988	[0.946, 1.03]	0.571	0.998	[0.959, 1.04]	0.932
PR Interval	1.00	[0.985, 1.02]	0.754	1.00	[0.981, 1.03]	0.809
QRS Interval	1.03	[1.01, 1.04]	0.001	1.03	[1.01, 1.04]	0.002
QT Interval	1.00	[0.997, 1.01]	0.359	1.00	[0.995, 1.01]	0.500
QTc Interval	1.02	[1.01, 1.02]	<0.001	1.01	[1.00, 1.02]	0.062
P Axis	0.998	[0.988, 1.01]	0.737	0.994	[0.982, 1.01]	0.383
QRS Axis	1.00	[0.995, 1.01]	0.494	1.00	[0.994, 1.01]	0.620
T Axis	1.00	[0.994, 1.01]	0.705	0.998	[0.990, 1.01]	0.695
Lead V5 R Wave Amplitude	1.15	[0.587, 2.26]	0.680	0.761	[0.371, 1.56]	0.456
Lead V1 S Wave Amplitude	2.09	[0.699, 6.26]	0.187	1.73	[0.556, 5.37]	0.344
1 st Degree AV Block	1.92	[0.440, 8.39]	0.386	3.91	[0.770, 19.9]	0.100
Interventricular Delay	3.11	[1.37, 7.08]	0.007	3.60	[1.38, 9.41]	0.009

Table 2B. Multivariate predictors of post-diagnosis VT/VF-free survival in long QT syndrome, excluding baseline ECG parameters

Overall (n=136)				Adult (n=58)			
Parameter	HR	95% CI	P-Value	Parameter	HR	95% CI	P-Value
Family History of LQTS	1.07	[0.453, 2.51]	0.883	FH SCD	0.605	[0.106, 3.46]	0.572
Family History of SCD	0.454	[0.103, 2.00]	0.296	Other Arrhythmias	4.12	[1.35, 12.6]	0.013
Other Arrhythmias	2.87	[1.33, 6.21]	0.007	Initial Asymptomatic	2.74	[0.522, 14.4]	0.233
Initially Asymptomatic	0.862	[0.314, 2.37]	0.773	Initial VT/VF	3.73	[1.13, 12.3]	0.030
Initial VT/VF	4.66	[2.03, 10.7]	<0.001	Schwartz Score	4.49	[1.81, 11.2]	0.001
Initial QTc Interval	1.00	[0.995, 1.01]	0.456				
Schwartz Score	1.78	[1.19, 2.66]	0.005				

Table 2C. Multivariate predictors of post-diagnosis VT/VF-free survival in long QT syndrome, including baseline ECG parameters

Overall (n=88)				Adult (n=44)			
Parameter	HR	95% CI	P-Value	Parameter	HR	95% CI	P-Value
Family History of LQTS	0.705	[0.225, 2.21]	0.548	FH SCD	0.552	[0.068, 4.46]	0.577
Family History of SCD	0.872	[0.176, 4.33]	0.867	Other Arrhythmias	5.41	[1.36, 21.4]	0.016
Other Arrhythmias	4.67	[1.53, 14.3]	0.007	Initial Asymptomatic	3.29	[0.507, 21.3]	0.212
Initial Asymptomatic	0.879	[0.238, 3.25]	0.847	Initial VT/VF	3.33	[0.976, 11.4]	0.055
Initial VT/VF	3.25	[1.29, 8.16]	0.012	Schwartz Score	4.67	[1.48, 14.7]	0.009
Initial QTc Interval	1.00	[0.989, 1.01]	0.689	QRS Interval	1.01	[0.971, 1.05]	0.666
Schwartz Score	1.90	[1.11, 3.26]	0.020	QTc Interval	0.997	[0.980, 1.01]	0.687
QRS Interval	1.01	[0.975, 1.04]	0.689	Interventricular Delay	3.74	[0.480, 29.2]	0.208
QTc Interval	1.00	[0.989, 1.01]	0.825				
Interventricular Delay	3.19	[0.503, 20.3]	0.219				

Table 3. Baseline Characteristics of the CPVT Cohort

Characteristic	Paediatric/Young (n=16)
Clinical Characteristics	
Female	8 (50.0)
Presentation Age (years)	10.8±4.4
Diagnosis Age (years)	11.4±4.4
Current Age (years)	20.5±6.5
Presentation to Diagnosis (months)	7.7±10.4
Family History of CPVT/SCD	3 (18.8)
Initial symptomatic	15 (93.8)
Initial syncope	14 (87.5)
Initial VT/VF/SCD	5 (31.3)
Initial palpitations	4 (25.0)
Initial chest pain	1 (6.3)
Initial seizure	6 (37.5)
PVC	11 (68.8)
VT/VF	10 (62.5)
VT/VF post-presentation	7 (43.8)
Genetic Test	14 (87.5)
Positive Genetic Test	8 (57.1)
Adrenaline Challenge	7 (43.8)
Positive Adrenaline Challenge	7 (100)
Exercise Tolerance Test	15 (93.8)
Positive Exercise Tolerance Test	13 (92.9)
EPS	2 (12.5)
Positive EPS	2 (100)
ICD	3 (18.8)
Holter Study	14 (87.5)
Arrhythmia in Holter Study	6 (46.2)
Echocardiogram	15 (93.8)
Abnormal echocardiogram	1 (6.7)
Cardiac MRI performed	5 (31.3)
Abnormal cardiac MRI	0 (0)
EEG	8 (50)
Positive EEG	0 (0)
Follow-Up Duration (months)	116.3±35.9
Baseline ECG Characteristics	
Heart Rate	81±24
P-Wave Duration	94±18
PR Interval	163±53
QRS Interval	90±25
QT Interval	369±59
QTc Interval	424±34
P Axis	40±35
QRS Axis	67±29

T axis	43±45
1 st Degree AV Block	1 (6.3)
Interventricular Delay	2 (12.5)

Table 4. Importance ranking of significant univariate predictors of incident VT/VF in LQTS generated by the RSF model.

Predictor	Variable importance	Rank
Initial VT/VF	0.1006	1
Schwartz Score	0.0370	2
Initial QTc Interval	0.0303	3
Family History of LQTS	0.0054	4
Initially Asymptomatic	0.0028	5
Other Arrhythmias	0.0002	6
Family History of SCD	-0.0010	-

Table 5. Top five important variables for predicting incident VT/VF in CPVT generated by the RSF model.

Predictor	Variable importance	Rank
Initial VT/VF	0.1033	1
Initial palpitations	0.0415	2
QTc	0.0307	3
Initially Symptomatic	0.0051	4
Heart Rate	0.0028	5

Table 6. Performance comparisons of RSF and multivariate Cox models to predict VT/VF of LQTS (both with five-fold cross-validation approach and significant univariate predictors as model input).

Model	Precision	Recall	Brier score	Harrell's C index
RSF	0.95	0.93	0.09	0.91
Multivariate Cox	0.86	0.84	0.13	0.82

Figure 1. Kaplan-Meier survival curve for paediatric/young and adult long QT syndrome (LQTS) patients.

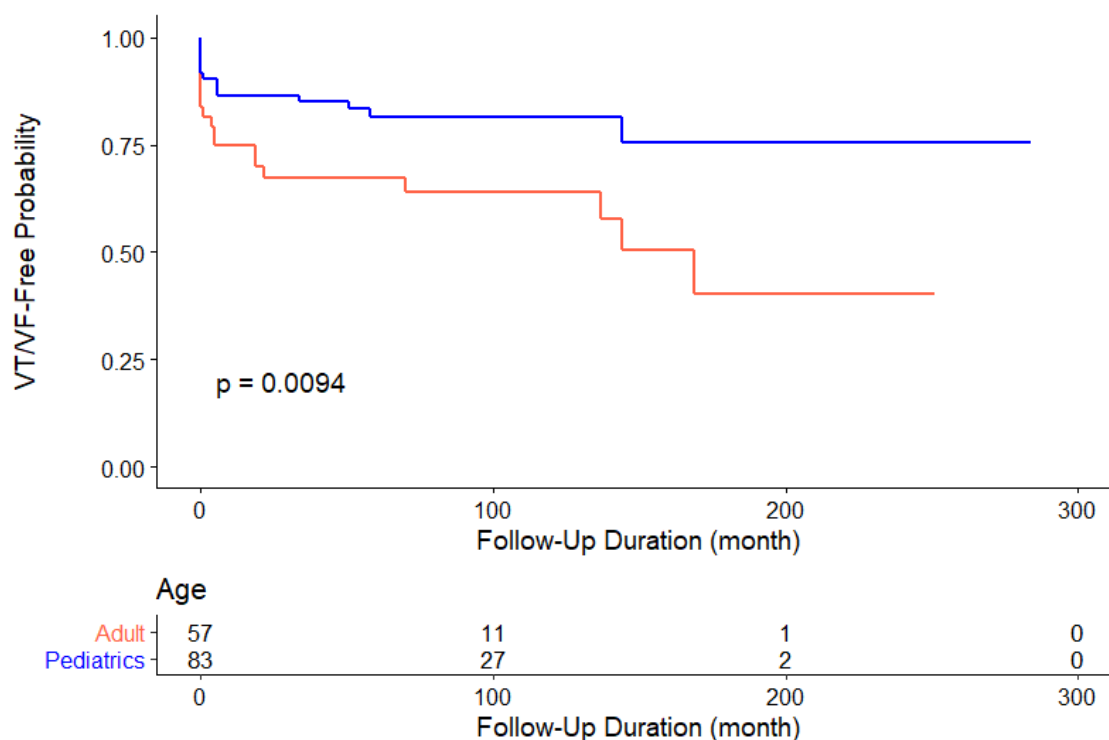


Figure 2. Kaplan-Meier survival curve for catecholaminergic polymorphic ventricular tachycardia (CPVT) patients.

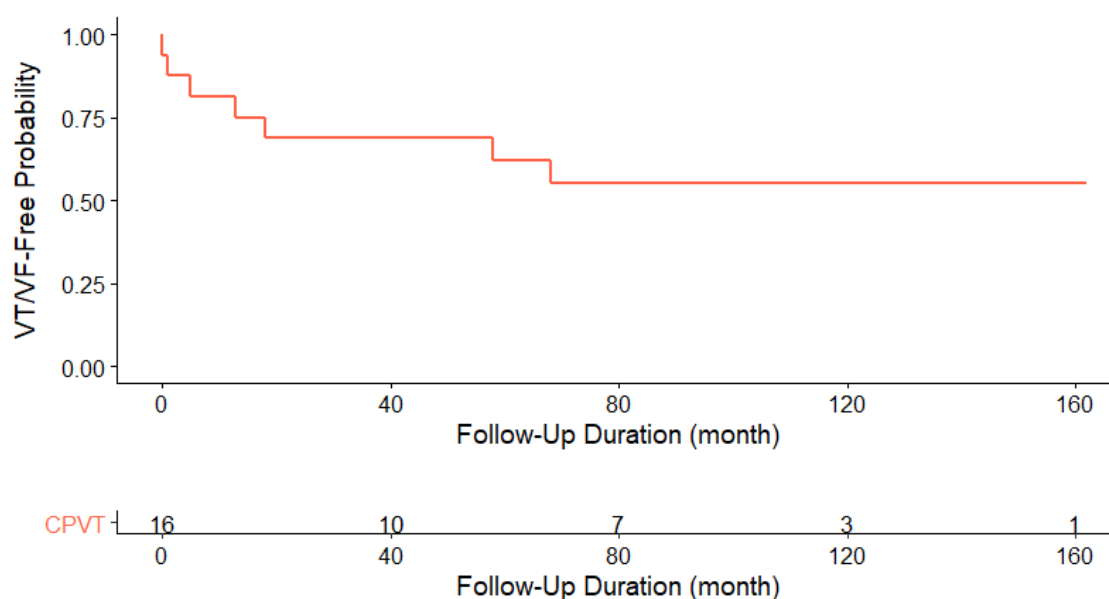


Figure 3. Optimal tree number selection for RSF model to predict VT/VF in LQTS (*top panel*) and CPVT (*bottom panel*).

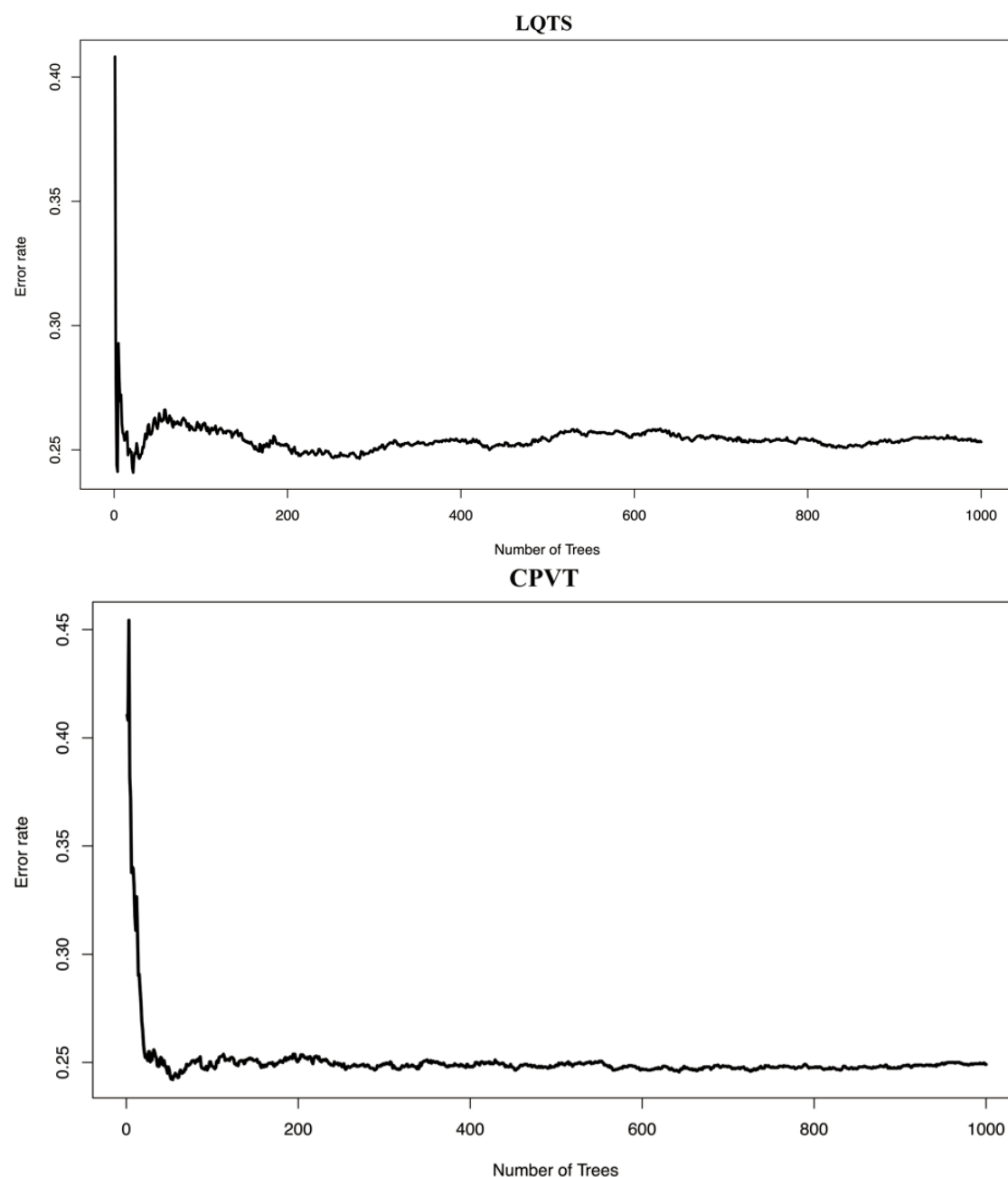


Figure 4. Predicted OOB survivals and cumulative hazards generated by the RSF model for predicting incident VT/VF in LQTS (top panels) and CPVT (bottom panels).

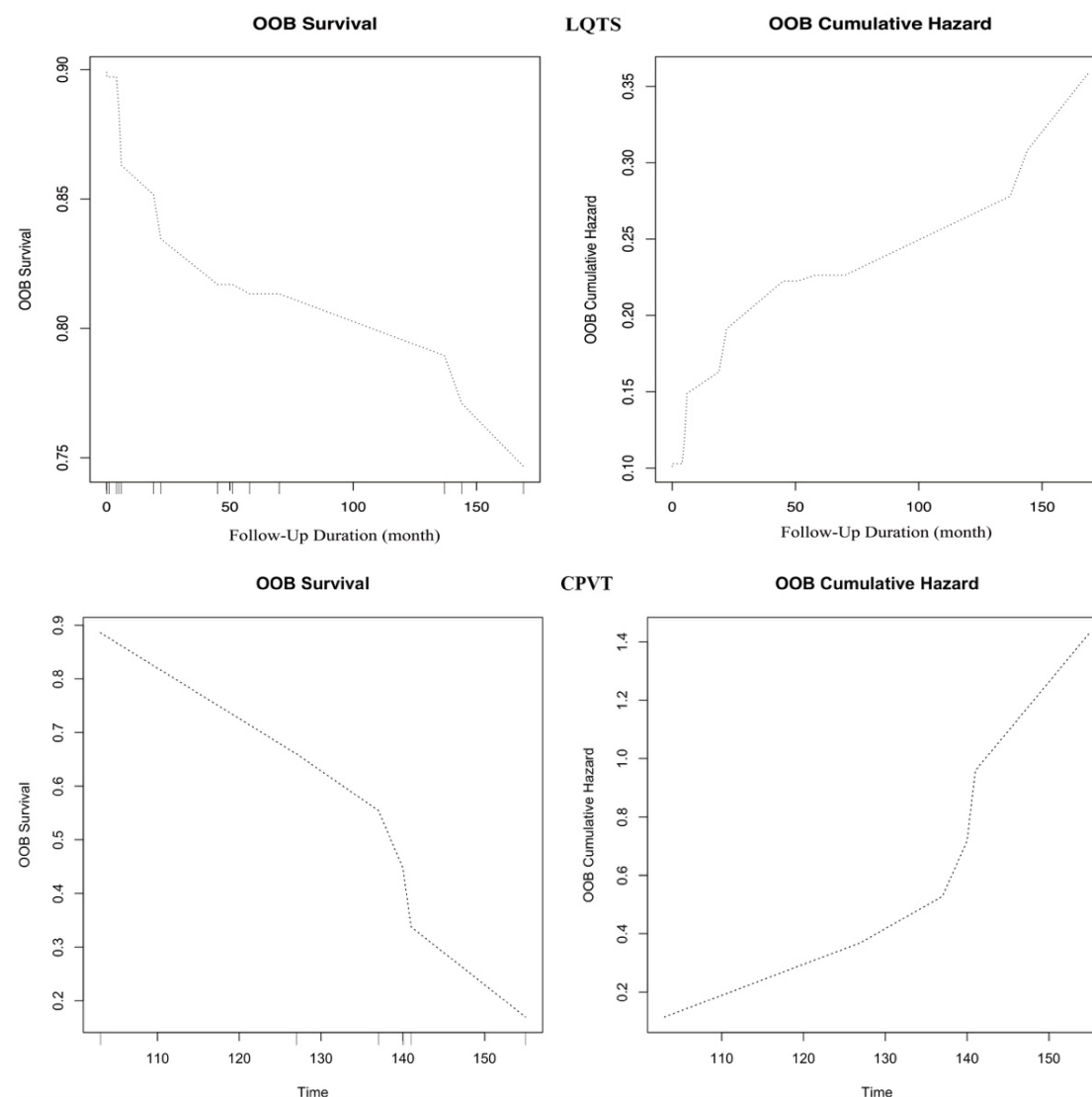


Figure 5. Survival estimates for the LQTS cohort generated from the random survival forest (RSF) model. The overall ensemble survival is indicated by the red line; the Nelson-Aalen estimator is given by the green line (*top left panel*). Brier score (0=perfect, 1=poor, and 0.25=guessing) stratified by ensemble mortality based on the inverse probability of censoring weight (IPCW) method (*top right panel*). The cohort was stratified into four groups of 0-25, 25-50, 50-75 and 75-100 percentile mortality (the overall, non-stratified, Brier score is shown by the red line). Continuous rank probability score (CRPS) given by the integrated Brier score divided by time (*bottom left panel*). Plot of incident VT/VF of each LQTS patient versus observed time (*bottom right panel*). Events are shown as blue points, whereas censored observations are shown as red points.

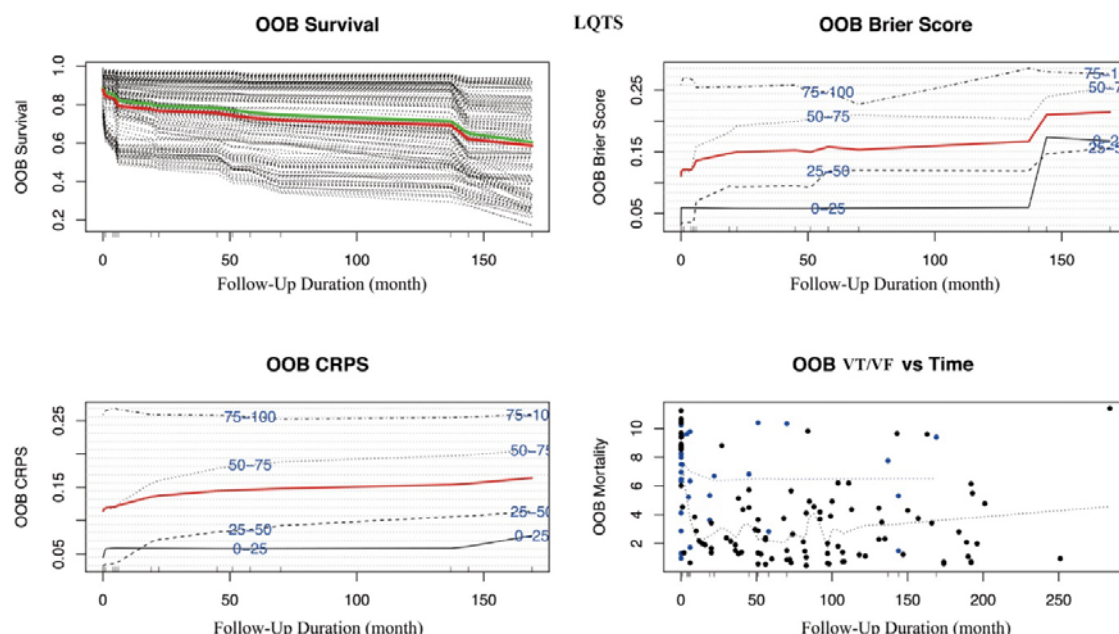


Figure 6. Survival estimates for the CPVT cohort generated from the random survival forest (RSF) model. The overall ensemble survival is indicated by the red line; the Nelson-Aalen estimator is given by the green line (*top left panel*). Brier score (0=perfect, 1=poor, and 0.25=guessing) stratified by ensemble mortality based on the inverse probability of censoring weight (IPCW) method (*top right panel*). The cohort was stratified into four groups of 0-25, 25-50, 50-75 and 75-100 percentile mortality (the overall, non-stratified, Brier score is shown by the red line). Continuous rank probability score (CRPS) given by the integrated Brier score divided by time (*bottom left panel*). The plot of incident VT/VF of each LQTS patient versus observed time (*bottom right panel*). Events are shown as blue points, whereas censored observations are shown as red points.

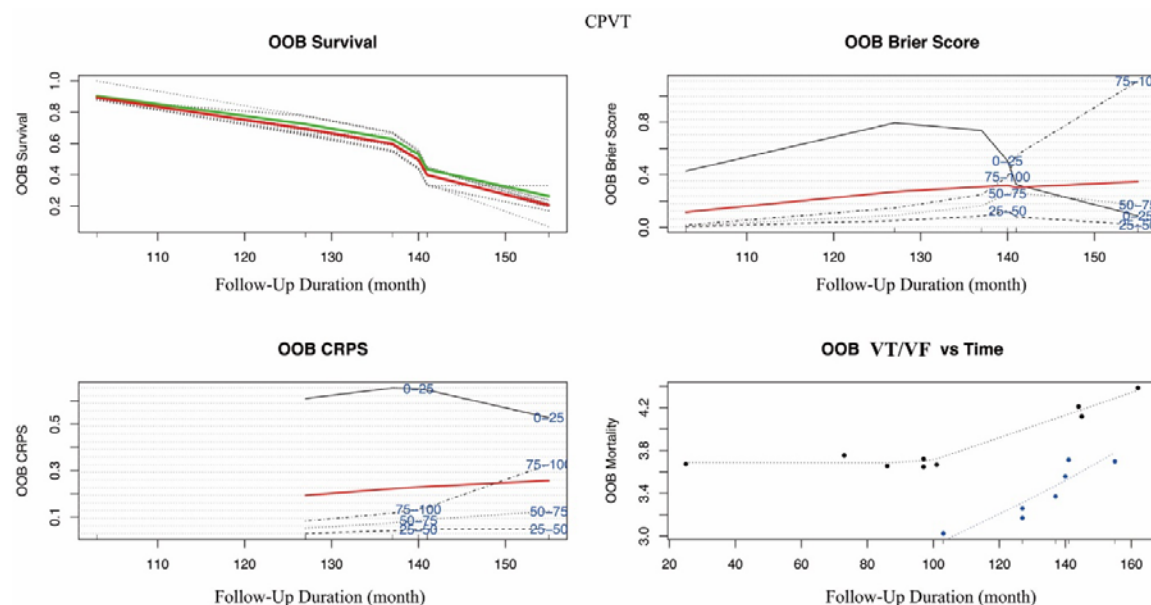
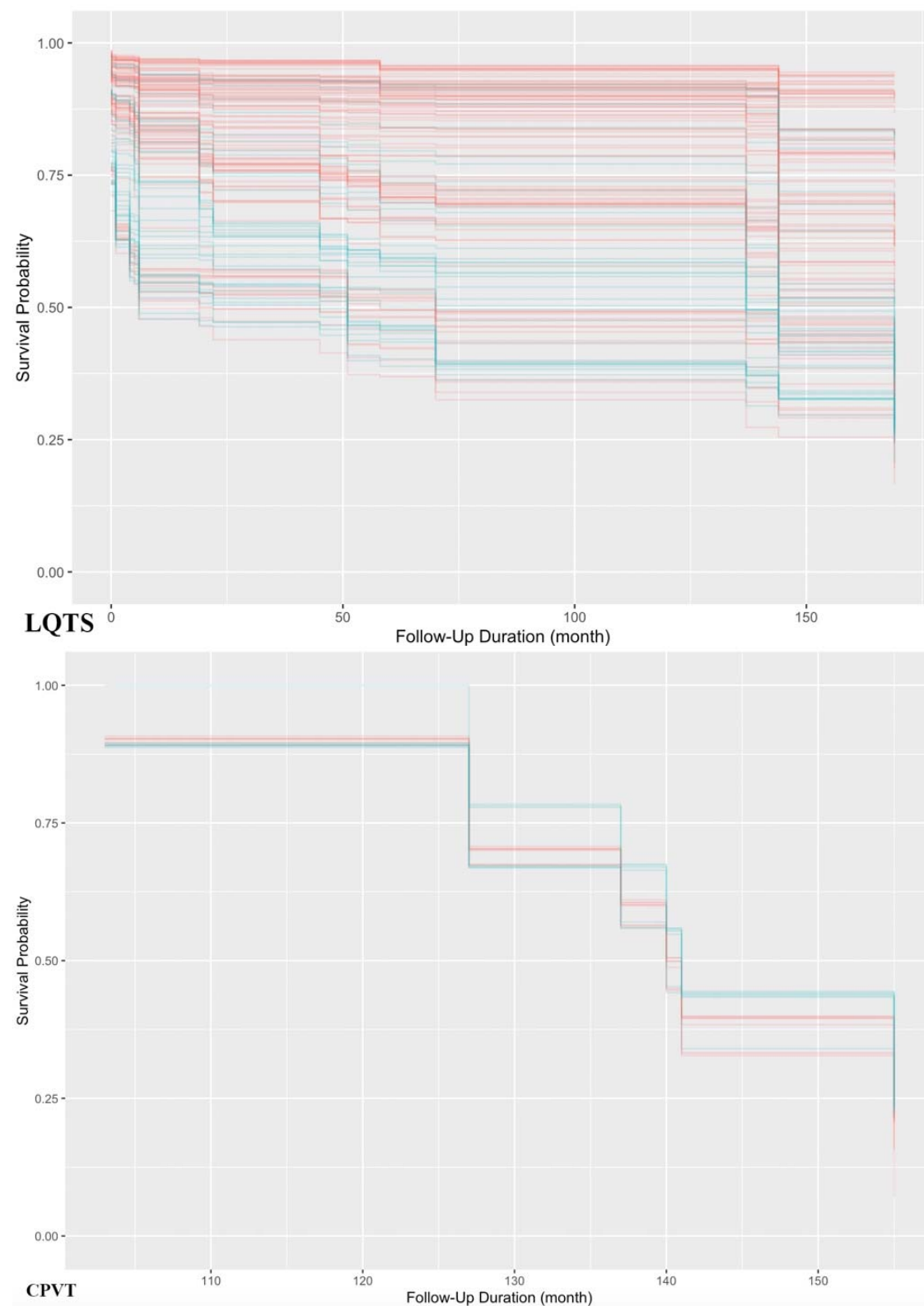


Figure 7. Predicted VT/VF survivals of LQTS (*top panel*) and CPVT (*bottom panel*) patients generated by the RSF model.



References

1. Skinner JR, Winbo A, Abrams D, Vohra J, Wilde AA. Channelopathies That Lead to Sudden Cardiac Death: Clinical and Genetic Aspects. *Heart Lung Circ.* 2019;28(1):22-30.
2. Roston TM, Haji-Ghassemi O, LaPage MJ, et al. Catecholaminergic polymorphic ventricular tachycardia patients with multiple genetic variants in the PACES CPVT Registry. *PLoS One.* 2018;13(11):e0205925.
3. Behere SP, Weindling SN. Catecholaminergic polymorphic ventricular tachycardia: An exciting new era. *Ann Pediatr Cardiol.* 2016;9(2):137-146.
4. Schwartz PJ, Crotti L. QTc behavior during exercise and genetic testing for the long-QT syndrome. *Circulation.* 2011;124(20):2181-2184.
5. Ishwaran H, Kogalur UB, Blackstone EH, Lauer MS. Random survival forests. *Ann Appl Stat.* 2008;2(3):841-860.
6. Breiman L. Random Forests. *Machine Learning.* 2001;45(1):5-32.
7. Gerds TA, Schumacher M. Consistent estimation of the expected Brier score in general survival models with right-censored event times. *Biom J.* 2006;48(6):1029-1040.
8. Nannenberg EA, Sijbrands EJ, Dijkman LM, et al. Mortality of inherited arrhythmia syndromes: insight into their natural history. *Circ Cardiovasc Genet.* 2012;5(2):183-189.
9. Goldenberg I, Moss AJ, Peterson DR, et al. Risk factors for aborted cardiac arrest and sudden cardiac death in children with the congenital long-QT syndrome. *Circulation.* 2008;117(17):2184-2191.
10. Vincent GM, Schwartz PJ, Denjoy I, et al. High efficacy of beta-blockers in long-QT syndrome type 1: contribution of noncompliance and QT-prolonging drugs to the occurrence of beta-blocker treatment "failures". *Circulation.* 2009;119(2):215-221.
11. Yoshinaga M, Nagashima M, Shibata T, et al. Who is at risk for cardiac events in young patients with long QT syndrome? *Circ J.* 2003;67(12):1007-1012.
12. Hofman N, Wilde AA, Kaab S, et al. Diagnostic criteria for congenital long QT syndrome in the era of molecular genetics: do we need a scoring system? *Eur Heart J.* 2007;28(5):575-580.
13. Wong JA, Gula LJ, Klein GJ, Yee R, Skanes AC, Krahn AD. Utility of treadmill testing in identification and genotype prediction in long-QT syndrome. *Circ Arrhythm Electrophysiol.* 2010;3(2):120-125.
14. Alimurung MM, Massell BF. The normal P-R interval in infants and children. *Circulation.* 1956;13(2):257-262.
15. Lane CM, Bos JM, Rohatgi RK, Ackerman MJ. Beyond the length and look of repolarization: Defining the non-QTc electrocardiographic profiles of patients with congenital long QT syndrome. *Heart Rhythm.* 2018;15(9):1413-1419.
16. Diamant UB, Jensen SM, Winbo A, Stattin EL, Rydberg A. Vectorcardiographic recordings of the Q-T interval in a pediatric long Q-T syndrome population. *Pediatr Cardiol.* 2013;34(2):245-249.
17. Kirchhof P, Eckardt L, Franz MR, et al. Prolonged atrial action potential durations and polymorphic atrial tachyarrhythmias in patients with long QT syndrome. *J Cardiovasc Electrophysiol.* 2003;14(10):1027-1033.
18. Lemoine MD, Duverger JE, Naud P, et al. Arrhythmogenic left atrial cellular electrophysiology in a murine genetic long QT syndrome model. *Cardiovasc Res.* 2011;92(1):67-74.
19. Takasugi N, Takasugi M, Goto H, et al. Significance of T-wave inversion triggered by spontaneous atrial premature beats in patients with long QT syndrome. *Heart Rhythm.* 2018;15(6):860-869.
20. Qu Z, Garfinkel A, Weiss JN. Vulnerable window for conduction block in a one-dimensional cable of cardiac cells, 2: multiple extrasystoles. *Biophys J.* 2006;91(3):805-815.
21. Pastore JM, Girouard SD, Laurita KR, Akar FG, Rosenbaum DS. Mechanism linking T-wave alternans to the genesis of cardiac fibrillation. *Circulation.* 1999;99(10):1385-1394.

22. Roston TM, Vinocur JM, Maginot KR, et al. Catecholaminergic polymorphic ventricular tachycardia in children: analysis of therapeutic strategies and outcomes from an international multicenter registry. *Circ Arrhythm Electrophysiol*. 2015;8(3):633-642.
23. Roston TM, Yuchi Z, Kannankeril PJ, et al. The clinical and genetic spectrum of catecholaminergic polymorphic ventricular tachycardia: findings from an international multicentre registry. *Europace*. 2018;20(3):541-547.
24. Mak CM, Mok NS, Shum HC, et al. Sudden arrhythmia death syndrome in young victims: a five-year retrospective review and two-year prospective molecular autopsy study by next-generation sequencing and clinical evaluation of their first-degree relatives. *Hong Kong Med J*. 2019;25(1):21-29.