

Brain activity is contingent on neuropsychological function in an fMRI study of Verbal Working Memory in Amyotrophic Lateral Sclerosis

Xenia Kobeleva ^{1,2}, Judith Machts ³, Maria Veit ^{3,4}, Stefan Vielhaber ³, Susanne Petri ^{2*}, Mircea Ariel Schoenfeld ^{3, 5, 6*}

*equally contributed

Affiliations

1 Department of Neurology, University Hospital of Bonn, Germany

2 Department of Neurology and Clinical Neurophysiology, Hannover Medical School, Hannover, Germany

3 Department of Neurology, Otto-von-Guericke University, Magdeburg, Germany

4 Department of Psychiatry, Social Psychiatry and Psychotherapy, Hannover Medical School, Hannover, Germany

5 Kliniken Schmieder, Heidelberg, Germany

6 Dept. of behavioral neurology, Leibniz Institute for Neurobiology, Magdeburg

Corresponding author: Dr. Xenia Kobeleva, Department of Neurology, University of Bonn, Venusberg-Campus 1, 53127 Bonn, Germany; email: xkobeleva@gmail.com

Key words:

Amyotrophic lateral sclerosis, neuroimaging, working memory, neuropsychology, fMRI

Abstract

Amyotrophic lateral sclerosis (ALS) is a devastating neurodegenerative disease that causes progressive degeneration of neurons in motor and non-motor regions, affecting multiple cognitive domains. In order to contribute to the growing research field that employs structural and functional neuroimaging to investigate the effect of ALS on different working memory components, we conducted a functional magnetic resonance imaging (fMRI) study exploring the localization and intensity of alterations in neural activity. Being the first study to specifically address verbal working memory via fMRI in the context of ALS, we employed the verbal n-back task with 0-back and 2-back conditions. Despite ALS patients showing unimpaired accuracies and reaction times, there was significantly increased brain activity of frontotemporal and parietal regions in the 2-back minus 0-back contrast in patients compared to controls. This increased brain activity was largely associated with a better neuropsychological performance within the ALS group, suggesting a compensatory effect. This study therefore adds to the current knowledge on neural correlates of working memory in ALS and contributes to a more nuanced understanding of hyperactivity during cognitive processes in fMRI studies of ALS.

Introduction

Amyotrophic lateral sclerosis (ALS) is characterized by progressive impairment of motor and non-motor brain regions. Reflecting the increasing scientific attention on non-motor effects of ALS¹⁻⁷, current epidemiological findings indicate that up to 55 % of ALS patients exhibit cognitive deficits, including up to 20% of patients with characteristics of frontotemporal dementia⁸⁻¹². These deficits mostly manifest in impaired verbal fluency and executive dysfunction¹³, but also in other cognitive domains, such as language, social cognition, and different components of memory^{14,15}.

One important component of memory, that has been considered in ALS research, is working memory. It is the ability to temporarily store information during cognitive processing¹⁶. If impaired, it causes general higher-order cognition to deteriorate. Based on Baddeley & Hitch's seminal paper from 1974¹⁷⁻¹⁹, the current dominant model of working memory comprises four principal components: Two unimodal storage systems (i.e., the phonological loop for verbal and numerical information and the visuospatial sketchpad for visual information), the episodic buffer (storing multimodal information in an episodic representation), and the central executive (which controls these storage systems and manipulates information)²⁰.

Prior research has assessed the impact of ALS on working memory using behavioral and functional imaging measures during the execution of working memory tasks. Most research focused on the patients' working memory capacity. Such studies utilized tasks that either address the phonological loop or the visuospatial sketchpad, with the majority of studies showing interest in the former. Specifically, studies addressing the phonological loop mostly employed variations of the digit span task as measures of working memory capacity, which was mostly found to be unimpaired in ALS^{13,14,21-23}. Research on the visuospatial sketchpad employed visuospatial sequence tasks and more complex tasks (such as the visual 2-back task) and yielded mostly comparable or marginally weaker behavioral performance results for ALS patients relative to controls²³⁻²⁵.

In contrast to comparisons of neuropsychological performance, studies have placed much less attention on brain activity alterations in ALS patients. In fact, employing event-related potentials or functional magnetic resonance imaging (fMRI) during working memory task execution have revealed localized abnormal frontoparietal brain activity patterns in ALS patients. This suggests that the behavioral parity to control groups in ALS patients is accompanied by compensatory or potentially disease-related brain network changes.

For example, Hammer et al.²³ applied event-related potentials and found parietal differences between the storage of figural and spatial information during a visual 2-back task in ALS patients, which were not present in healthy controls. Relatedly, Vellage et al.²⁵ used a visuospatial working memory task with different levels of memory load and distractors, localizing neural activity related to working memory capacity via fMRI. They found significantly different levels of frontal brain activity in ALS patients compared to controls. Specifically, they reported lower frontal brain activity during storage of working memory content (arguing that this can be attributed to a breakdown of storage capacity), while higher frontal brain activity was observed during filtering of relevant stimuli (arguing that this can be attributed to compensatory hyperactivity).

In prior literature working memory in ALS, significantly more research has addressed the phonological loop than the visuospatial sketchpad^{13,14,21–23}. Given this proportion, it is remarkable that none of the studies addressing the phonological loop have employed neuroimaging methods or complex tasks with active manipulation of working memory content. Such complex tasks could feature a higher sensitivity to working memory dysfunction in ALS. Furthermore, using fMRI could substantiate possible working memory dysfunction and compensatory processes in ALS by describing ALS-associated patterns of neural activity involved in verbal working memory function.

In this study, we therefore sought to extend evidence on ALS-induced verbal working memory dysfunction. Specifically, by using fMRI, we investigated the underlying brain activity in ALS patients (and controls) during execution of the well-established and robust verbal n-back task²⁶, which addresses both the central executive as well as the phonological loop. By doing so, we acknowledge that such a complex task requires more active manipulation of working memory content and could be more sensitive in detecting working memory dysfunction in ALS²³. Building on prior research, we hypothesized comparable or subtly diminished behavioral accuracy associated with ALS. We complement previous studies that focused on visuospatial working memory; in consequence, we aim at supplying information on whether potentially impaired working memory performance and accompanying brain hyperactivity levels occur in both the phonological loop and the visuospatial sketchpad in patients with ALS. We expected ALS patients to show an increased activity of frontoparietal brain areas associated with reduced executive function. We especially aimed to address the potential interaction of neuropsychological function that is known to be impaired in ALS patients (executive function, verbal fluency and language function) with working memory performance and observed brain activity.

Materials and Methods

Subjects

28 ALS patients were recruited from the ALS clinics of Hannover Medical School and University of Magdeburg. They had been diagnosed by a board-certified neurologist according to the revised El Escorial criteria (i.e., diagnosis of possible, probable, laboratory supported-probable or definite ALS²⁷) and did not show clinical signs of other current neuropsychiatric disorders — especially no dementia according to the ALS-FTD criteria²⁸. They were all able to press a button with their right hand and lie horizontally in the MRI scanner. 21 controls matched for age, gender, and education and without a history of neuropsychiatric disorder participated in the study. Subjects were excluded if their task performance during a practice run was insufficient (< 2/3 of correct responses) or if they exhibited intolerable head movement (see description of preprocessing below). This led to the exclusion of four patients due to excessive motion and two patients due to insufficient task performance, resulting in 22 ALS patients included in the analysis.

Functional impairment was classified by the revised version of the ALS functional rating scale (ALSFRS-R²⁹), and the severity of motor symptoms was assessed by a standard neurological examination. The neuropsychological evaluation consisted of the cognitive part of the Edinburgh Cognitive and Behavioural ALS Screen (ECAS, German version)³⁰. In addition to analyzing the group means, the ECAS was used to categorize ALS patients into subgroups according to the revised Strong criteria³¹: ALS-ci (cognitively impaired in at least one ALS-specific cognitive domain) and ALS-ni (no cognitive impairment). To do so, the cut-off-values of the German ECAS were used³².

The study was approved by the ethics' committee of the medical faculty of the University of Magdeburg and all subjects provided informed and written consent.

Experimental Design

Working memory function was assessed using a letter version of the 2-back task³³. This task was part of a bigger (yet unpublished) fMRI study. The task was presented with the NBS Presentation software. Before entering the MRI scanner, all participants performed a short practice trial.

During the experiment, each condition started with a 5-second "instruction" condition. In the 0-back condition "A", 15 capital letters were presented in a random order. The participants were asked to press a button with their right index finger whenever the letter "N" appeared on the screen (in four out of the 15 trials). During the 2-back condition "B", participants were required to press the button if the presented letter was the same as the one that appeared two items

before (in four out of 15 trials in a pseudorandom order to avoid successive occurrence of target trials). The 0- and 2-back task conditions were presented for 400ms, followed by an inter-stimulus-interval of 1.6 seconds, resulting in four blocks of 30seconds, divided by 15 seconds of fixation and five seconds of instruction. The order of the two conditions was ABBABAAB for all subjects.

Analysis of Neuropsychological and Behavioral Data

Reaction times and error rates recorded for each participant. Behavioral and neuropsychological data were compared between groups using (M)ANCOVAs via SPSS Statistics and JAMOV³⁴. We calculated the association between accuracy of the 2-condition of the n-back task and disease duration and ALSFRS-R in ALS using Spearman correlations. Furthermore, we evaluated the effect of group membership (patients vs controls) on accuracy and reaction times using a repeated-measures ANCOVA with covariates ECAS sub-scores for executive function, verbal fluency, and language function, and included age and gender as covariates of no interest.

MRI Data Acquisition

Subjects were scanned in a 3T whole body MR scanner (Siemens Magnetom Verio syngo MR B19, Erlangen, Germany) using a 32-channel head coil receiver. A gradient echo single shot EPI sequence (with 42 slices, TE= 30ms, TR= 2500ms, flip-angle 80°, in-plane resolution 64x64mm, no gap, FoV 224x224mm², voxel size 2x2x3mm³) was used to acquire the functional images in an odd-even interleaved sequence (166 volumes). A T1-weighted image was acquired as well (MP-RAGE, 96 sagittal slices, thickness= 2mm, FoV 256 × 256mm, no gap, voxel size 1x1x2mm³, TR= 1660ms, TE= 5.05ms, TI= 1100ms).

MRI Data Preprocessing

The fMRI data was preprocessed using FEAT Version 6.00, part of FSL (FMRIB's Software Library) with a standard pipeline with motion correction³⁵; non-brain removal³⁶; spatial smoothing (8mm FWHM); grand-mean intensity normalization; high-pass temporal filtering (sigma= 30.0s). ICA-based exploratory data analysis was carried out with MELODIC³⁷ to investigate the possible presence of unexpected artefacts or activity. Outliers were detected by observing the motion parameters from the realignment step (threshold of 0.5 mm/TR or 1.9 standard deviations away from mean). If more than 1/3 of a run's data points were outliers, the subject was excluded from the analysis.

First-Level Analysis

All three conditions (i.e., the instruction, the 0-back and 2-back condition) were entered into a general linear model using a boxcar function convolved with a standard hemodynamic response function. For the first-level analysis, the contrast for working memory function was calculated for the 2-back minus 0-back condition.

Second-Level Analysis

The resulting 2-back minus 0-back contrast was submitted to group statistics and regression analyses with covariates of interest using permutation-based nonparametric statistics (FSL Randomise; <http://fsl.fmrib.ox.ac.uk/fsl/fslwiki/Randomise>). The analyses featured 5,000 permutations; values above a voxel-wise T-value of 2.5 (uncorrected) were considered significant. Age and gender were demeaned and included as covariates of no interest. Group means and group contrasts were calculated to compare the ALS group with controls. The association of the covariates with brain activity was examined using a regression analysis with 5,000 permutations in FSL Randomise using a voxel-wise threshold of a T-value > 2.5 (uncorrected). In the ALS group, the association of ALSFRS-R and disease duration with brain activity was examined. The association of the covariates ECAS executive, ECAS language and ECAS verbal fluency was compared between ALS patients and controls. The FSL Randomise output shows the regions that contain significant group differences in slopes between the dependent and independent variables, but it does not display the direction of the slopes. To disentangle the direction of the group differences (i.e., whether the differences were caused by a positive relation of higher neuropsychological performance on brain activity in ALS patients or by a negative relation in controls), the regression analysis' group means were calculated as well, and were subsequently overlaid with the group contrasts. The resulting statistical maps were visualized with Nilearn³⁸.

Results

Subject Characteristics

Both ALS patients and controls were comparable in age, gender, and years of education (all $p > 0.05$, see Table 1). 10 patients were diagnosed with possible ALS, five with probable ALS, and seven with definitive ALS²⁷. Furthermore, 10 ALS patients fulfilled the criteria for ALS-ci, according to the modified Strong criteria³¹. Patients' characteristics can be found in Table 1.

Neuropsychological Testing

Means and standard deviations of the neuropsychological assessments are reported in Table 2. The MANCOVA showed a significant effect of group ($F = 2.625$, $p = 0.041$) and age ($F = 3.311$, $p = 0.015$) but not of gender ($F = 1.480$, $p = 0.222$). Post-hoc ANOVAS showed that the two groups were not different—neither in the overall ECAS score, nor in the subdomains memory function, visuospatial functions, verbal fluency, or executive function (each $p > 0.05$).

However, at first glance patients performed significantly worse than controls in the language domain ($F = 5.938$, $p = 0.019$). After a Bonferroni-correction for multiple comparisons, neither of these values remained significant. Despite comparable mean group values in ALS and controls, there were 10 ALS-ci and 12 ALS-ni patients within the ALS group, according to the modified Strong criteria³¹. Due to small group sizes of the ALS-ci and ALS-ni group, we did not use these subgroups for further analyses, but instead resorted to regression analyses of the ECAS subdomains (executive function, verbal fluency, and language function) on behavioral performance and brain activity.

Behavioral Performance

Accuracies and reaction times of the n-back task are reported in Supplementary Table 1. The repeated-measures ANCOVA of accuracies revealed significant effects of age ($F = 8.013$, $p = 0.007$) and condition ($F = 4.701$, $p = 0.036$), but no significant effects of gender ($F = 1.162$, $p = 0.288$) or group ($F = 0.127$, $p = 0.724$). With respect to reaction times, there was no significant effect of condition ($F = 0.005$, $p = 0.942$), age ($F = 0.667$, $p = 0.419$), but a significant effect of gender ($F = 6.554$, $p = 0.014$). Regarding the effect of group on reaction times, there was a tendency to slower reaction times in ALS patients compared to controls without reaching a significant threshold ($F = 3.264$, $p = 0.0785$).

Neuropsychological function (i.e., executive function, verbal fluency, and language function) was found to have no significant effect on the accuracy (all F -values below 0.548 and p -values above 0.464). Regarding reaction times, there was a trend towards a positive relation between executive function and the reaction times ($F = 3.203$, $p = 0.083$, other F -values below 0.013 and p -values above 0.941). In the ALS group, there was no significant correlation between ALSFRS-R scores or disease duration, accuracy rates or reaction times (p -values above 0.198).

fMRI Results

To assess the neural correlates of working memory execution in ALS and its alterations in comparisons to controls, we calculated group means and group differences of the 2-back minus 0-back contrast (see Figure 1). Both groups exhibited comparable mean frontoparietal and temporal activity for the 2-back minus 0-back contrast (detailed results can be found in Table S1). For this contrast, between-group activity differences were observed in frontotemporal and parietal regions with ALS patients exhibiting higher activity than controls. Besides increased activity, regions with decreased activity within the inferior frontal cortex were found in the ALS group relative to controls.

We were then interested in associating separate contribution of the components of the working memory (phonological loop, central executive) to the observed differences in fMRI activity. To do so, we performed a regression analysis with the brain activity as a dependent variable and ECAS subdomains (i.e., executive function, verbal fluency, and language function) as independent variables. Figure 2 visualizes the group differences as they were identified by the regression analyses of the ECAS subdomains with brain activity in the 2-back minus 0-back contrast. As the group differences do not give any information on whether the differences were caused by a positive influence of higher ECAS scores on brain activity in ALS patients or by a negative influence of higher ECAS score on brain activity in controls, we performed the regression analyses for each group and neuropsychological subdomain separately and overlaid the activity maps onto the group contrasts (see supplementary Figure S1). As can be seen in Figure S1, group differences were mostly caused by negative associations of higher neuropsychological function and brain activity in controls. In ALS patients, this association was either absent or even reversed (i.e., a positive association of higher neuropsychological function and brain activity). Regarding executive function, in controls there was a negative association between higher executive function and lower brain activity of frontoparietal and cerebellar regions. In ALS patients, we found a positive association with higher executive function and cerebellar activity (which only partly overlapped with the areas where the group differences were found). Regarding verbal fluency, we found a negative association between verbal fluency performance and brain activity in frontotemporal regions in controls, while there was a positive association between verbal fluency performance and brain activity in frontotemporoparietal areas in ALS patients, with both effects contributing to the group differences. Regarding language function, there was a negative association between language function and lower brain activity in temporal areas in controls and a positive association between language function and brain activity in the superior frontal cortex. In ALS patients, there was a negative association between language function and brain activity in superior frontal areas and a positive association between language function and brain activity in temporal areas. With respect to an association of clinical variables with brain activity in ALS, regression analyses revealed increased frontal and cerebellar activity as a function of higher ALSFRS-R values (Figure 3) and increased activity within the left temporal cortex as a function of longer disease duration.

Discussion

In this study, we investigated the neural correlates of verbal working memory deficits in ALS patients. Controls and patients performed a 2-back task, and fMRI activity was associated with neuropsychological function. Patients and controls achieved overall similar behavioral

measures such as accuracies and reaction times in the task. Functional imaging revealed, besides a widely comparable frontoparietal brain activity in both groups, a significantly increased brain activity of several frontotemporal and parietal regions in the 2-back minus 0-back contrast in ALS patients. Moreover, frontoparietal brain activity was influenced by neuropsychological performance in a divergent manner in controls and patients. In general, there was a negative association of superior neuropsychological function and brain activity in controls, but a positive association of higher neuropsychological function with brain activity in ALS patients. This indicates a compensatory effect in ALS: While higher executive function was largely associated with increased brain activity of frontoparietal and cerebellar regions, better verbal fluency was associated with increased activity of frontotemporal areas, and higher language function was associated with increased activity of temporal areas (exclusively in ALS patients). In addition, we found that disease severity was positively related to decreased activity within the cerebellum and left inferior frontal cortex in ALS patients, possibly indicating a breakdown of these brain resources in more advanced stages of ALS.

In accordance with previous literature^{11,13,23}, about 45% of ALS patients participating in this study were classified as ALS-ci according to the modified Strong criteria³¹, despite similar neuropsychological test scores at the group level (except for diminished language function in the ALS group). Regarding behavioral performance, ALS patients achieved similar task accuracies and reaction times as controls. When investigating the influence of neuropsychological performance (such as executive function, verbal fluency, or language function) on behavioral performance, there was no association between neuropsychological function and task accuracy or reaction times. This argues in favor of an overall good behavioral performance of ALS patients in working memory tasks, even for verbal stimuli.

In contrast to the overall intact behavioral performance of the ALS patients, we observed some brain regions with enhanced brain activity in ALS patients, compared to controls. Both groups engaged mostly frontoparietal regions, which is in line with previous fMRI studies of working memory^{39–41}. Yet, ALS patients exhibited higher activity of frontoparietal and temporal regions in the 2-back condition. To better explain these findings, we assessed interactions between group and neuropsychological function as well as effects of disease severity and disease duration on brain activity. This approach identified several interesting insights: Overall, controls showed negative associations between higher executive function and frontoparietal activity, between superior verbal fluency performance and frontotemporal brain activity, and between language function and temporal brain activity. There was only one positive association between higher language function and brain activity within superior frontal cortex in controls. In ALS patients, these modulations of frontoparietal and temporal activity by

neuropsychological function were reversed, either featuring a positive association with better neuropsychological function with brain activity, or absent association of neuropsychological function with brain activity. While in healthy subjects higher cognitive performance is usually related to less brain activity (as a sign of decreased effort^{42,43}), the relationship between cognitive performance and brain activity in ALS was found to be the opposite. This may suggest that given sufficient cognitive resources, enhanced brain activity, might compensate for disease-related effects in those ALS patients who are able to maintain a sufficient cognitive performance. We observed less brain activity in ALS patients with lower cognitive function, possibly indicating a breakdown of resources, which might probably cause further behavioral deficits in even more demanding tasks.

Our findings therefore suggest that whether an ALS patient exhibits hyper- or hypoactivity during cognitive processes is contingent on the cognitive resources available to that individual. Successful compensation in ALS patients might be associated with hyperactivity, and a breakdown of cognitive resources might be mirrored by hypoactivity. This finding extends current knowledge on neural correlates of verbal working memory in ALS. It also contributes to a more nuanced understanding to the common finding of hyperactivity during cognitive processes in fMRI studies of ALS^{6,44–46}.

Interestingly, those brain areas affected and either not showing a decrease in association with higher cognitive function at all (as in controls) or even showing an increase of activity, are consistent with areas that were described in a recent postmortem neuropathological study. This study associated TDP-43 accumulation with neuropsychological function and showed associations of executive function with frontal accumulations and verbal fluency with frontotemporal accumulations⁴⁷. Therefore, functional neuroimaging of cognitive function in ALS might show areas of neural dysfunction reproducing known patterns of TDP-43 accumulations. Future studies dealing with task-related and resting-state fMRI should not only relate the observed neural changes to neuropsychological scores, but also specifically evaluate the observed patterns as putative biomarkers of disease progression.

As these associations between neuropsychological performance and brain activity were found for the 2-back minus 0-back contrast, one can suppose that these alterations are more than baseline disease-accompanying processes and contain information about functional changes of cognitive processes in ALS patients. As most differences were associated executive function and verbal fluency, it can be assumed that observed patterns of brain activity during working memory execution are mostly related to early impairments in executive function and probably to a lesser extent to language function. In consequence we suggest that the central executive

is primarily affected with a relative preserving of the phonological loop function, which is well in line with previous studies^{21,48}. The characteristics of the impairment of the central executive are in accordance with several reports of reduced executive function in ALS patients^{48–50}. These results are consistent with a previous study on visual working memory describing increased frontal activity during filtering of relevant information²⁵. Besides replicating findings from this specific study, the current results contribute to the research of cognitive dysfunction in ALS in general by providing a better understanding of executive dysfunction in the context of working memory in this disease.

Besides associations of neuropsychological performance and brain activity, we found a negative association of disease severity, i.e., a lower ALSFRS-R, and brain activity within inferior frontal and cerebellar regions. This supports the notion that ALS patients, who are more severely affected by the disease, have less brain resources available for cognitive tasks. Longer disease duration was associated with increased brain activity only in a small temporal area, possibly due to a selection bias of ALS patients with a more benign disease course, who were able to participate in our fMRI study.

Like most studies on rare diseases such as ALS, sample characteristics (i.e., small size and clinical phenotype heterogeneity) were determined by restricted patient availability; as such, the reported findings above should be interpreted with typical caution. For example, impaired respiratory and motor function may have limited the number of patients available for participation in the fMRI task, especially of those in more advanced stages of the disease. Larger studies could enable the analysis of subgroups (i.e., ALS-ci versus ALS-ni). Future studies could also employ longitudinal measures of cognitive function or evaluate options to test performance in more severely impaired patients with ALS^{6,51,52}.

In summary, our study found comparable behavioral performance but increased frontoparietal and temporal activity during a verbal working memory task in patients with ALS. Furthermore, increased activity of working memory-related areas in association with higher neuropsychological performance in ALS patients most likely reflect compensatory effects.

Acknowledgements

JM is funded by the federal state of Saxony-Anhalt and the European Regional Development Fund (ERDF) in the Center for Behavioral Brain Sciences (CBBS, ZS/2016/04/78113). SP is funded by the German Neuromuscular Society and Federal Ministry of Education and Research (BMBF). We thank Christian Stoppel and Christian Merkel for technical assistance with the experiment and analysis pipeline.

Conflicts of interest

SP has received honorariums by Desitin Pharma, Cytokinetics, Inc., Biogen and Novartis (see ICMJE uniform disclosure form). All the other authors declare no conflicts of interest.

Data availability

The data that support the findings of this study are available on request from the corresponding author. The data are not publicly available due to privacy or ethical restrictions. The data in this paper contain identifying patient and healthy volunteer information, which is unsuitable for public deposition. The participants of this study also did not consent to the sharing of their data.

References

1. Neumann, M. *et al.* Ubiquitinated TDP-43 in frontotemporal lobar degeneration and amyotrophic lateral sclerosis. *Science* **314**, 130–133 (2006).
2. DeJesus-Hernandez, M. *et al.* Expanded GGGGCC hexanucleotide repeat in noncoding region of C9ORF72 causes chromosome 9p-linked FTD and ALS. *Neuron* **72**, 245–256 (2011).
3. Renton, A. E. *et al.* A hexanucleotide repeat expansion in C9ORF72 is the cause of chromosome 9p21-linked ALS-FTD. *Neuron* **72**, 257–268 (2011).
4. Abrahams, S. *et al.* Frontotemporal white matter changes in amyotrophic lateral sclerosis. *J. Neurol.* **252**, 321–331 (2005).
5. Mohammadi, B. *et al.* Amyotrophic lateral sclerosis affects cortical and subcortical activity underlying motor inhibition and action monitoring. *Hum. Brain Mapp.* **36**, 2878–2889 (2015).
6. Stoppel, C. M. *et al.* Structural and functional hallmarks of amyotrophic lateral sclerosis progression in motor- and memory-related brain regions. *NeuroImage Clin.* **5**, 277–290 (2014).
7. Brettschneider, J. *et al.* Stages of pTDP-43 pathology in amyotrophic lateral sclerosis. *Ann. Neurol.* **74**, 20–38 (2013).

- 411 8. Ringholz, G. M. *et al.* Prevalence and patterns of cognitive impairment in sporadic ALS.
412 *Neurology* **65**, 586–590 (2005).
- 413 9. Montuschi, A. *et al.* Cognitive correlates in amyotrophic lateral sclerosis: a population-
414 based study in Italy. *J. Neurol. Neurosurg. Psychiatry* **86**, 168–173 (2015).
- 415 10. Rippon, G. A. *et al.* An observational study of cognitive impairment in amyotrophic lateral
416 sclerosis. *Arch. Neurol.* **63**, 345–52 (2006).
- 417 11. Phukan, J. *et al.* The syndrome of cognitive impairment in amyotrophic lateral sclerosis: a
418 population-based study. *J. Neurol. Neurosurg. Psychiatry* **83**, 102–108 (2012).
- 419 12. Chiò, A. *et al.* Cognitive impairment across ALS clinical stages in a population-based
420 cohort. *Neurology* **93**, e984–e994 (2019).
- 421 13. Beeldman, E. *et al.* The cognitive profile of ALS: a systematic review and meta-analysis
422 update. *J. Neurol. Neurosurg. Psychiatry* **87**, 611–9 (2016).
- 423 14. Machts, J. *et al.* Memory deficits in amyotrophic lateral sclerosis are not exclusively
424 caused by executive dysfunction: a comparative neuropsychological study of amnesic
425 mild cognitive impairment. *BMC Neurosci.* **15**, 83 (2014).
- 426 15. Girardi, A., Macpherson, S. E. & Abrahams, S. Deficits in emotional and social cognition
427 in amyotrophic lateral sclerosis. *Neuropsychology* **25**, 53–65 (2011).
- 428 16. Baddeley, A. D. Working memory. *Philos. Trans. R. Soc. B Biol. Sci.* **302**, 311–324
429 (1983).
- 430 17. Baddeley, A. D. & Hitch, G. Working Memory. *Psychol. Learn. Motiv.* **8**, 47–89 (1974).
- 431 18. Baddeley, A. The episodic buffer: a new component of working memory? *Trends Cogn.*
432 *Sci.* **4**, 417–423 (2000).
- 433 19. Repovš, G. & Baddeley, A. The multi-component model of working memory: Explorations
434 in experimental cognitive psychology. *Neuroscience* **139**, 5–21 (2006).
- 435 20. Repovš, G. & Baddeley, A. The multi-component model of working memory: Explorations
436 in experimental cognitive psychology. *Neuroscience* **139**, 5–21 (2006).

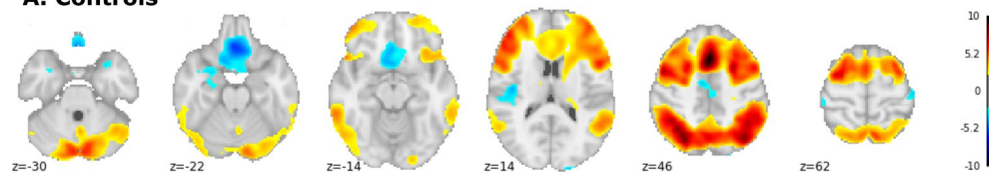
21. Volpato, C. *et al.* Working memory in amyotrophic lateral sclerosis: auditory event-related potentials and neuropsychological evidence. *J. Clin. Neurophysiol. Off. Publ. Am. Electroencephalogr. Soc.* **27**, 198–206 (2010).
22. Kasper, E. *et al.* No change in executive performance in ALS patients: A longitudinal neuropsychological study. *Neurodegener. Dis.* **16**, 184–191 (2016).
23. Hammer, A., Vielhaber, S., Rodriguez-Fornells, A., Mohammadi, B. & Münte, T. F. A neurophysiological analysis of working memory in amyotrophic lateral sclerosis. *Brain Res.* **1421**, 90–99 (2011).
24. Zaehle, T. *et al.* Working Memory in ALS Patients: Preserved Performance but Marked Changes in Underlying Neuronal Networks. *PLoS ONE* **8**, 1–10 (2013).
25. Vellage, A. K. *et al.* Working memory network changes in ALS: An fMRI study. *Front. Neurosci.* **10**, 1–10 (2016).
26. Owen, A. M., McMillan, K. M., Laird, A. R. & Bullmore, E. N-back working memory paradigm: A meta-analysis of normative functional neuroimaging studies. *Hum. Brain Mapp.* **25**, 46–59 (2005).
27. Brooks, B. R., Miller, R. G., Swash, M., Munsat, T. L., & World Federation of Neurology Research Group on Motor Neuron Diseases. El Escorial revisited: revised criteria for the diagnosis of amyotrophic lateral sclerosis. *Amyotroph. Lateral Scler. Mot. Neuron Disord. Off. Publ. World Fed. Neurol. Res. Group Mot. Neuron Dis.* **1**, 293–299 (2000).
28. Rascofsky, K. *et al.* Sensitivity of revised diagnostic criteria for the behavioural variant of frontotemporal dementia. *Brain* vol. 134 2456–2477 (2011).
29. Cedarbaum, J. M. *et al.* The ALSFRS-R: A revised ALS functional rating scale that incorporates assessments of respiratory function. *J. Neurol. Sci.* **169**, 13–21 (1999).
30. Lule, D. *et al.* The Edinburgh Cognitive and Behavioural Amyotrophic Lateral Sclerosis Screen: a cross-sectional comparison of established screening tools in a German-Swiss population. *Amyotroph. Lateral Scler. Front. Degener.* **16**, 16–23 (2015).

31. Strong, M. J. *et al.* Amyotrophic lateral sclerosis - frontotemporal spectrum disorder (ALS-FTSD): Revised diagnostic criteria. *Amyotroph. Lateral Scler. Front. Degener.* **18**, 153–174 (2017).
32. Abrahams, S., Newton, J., Niven, E., Foley, J. & Bak, T. H. Screening for cognition and behaviour changes in ALS. *Amyotroph. Lateral Scler. Front. Degener.* **15**, 9–14 (2014).
33. Braver, T. S. *et al.* A Parametric Study of Prefrontal Cortex Involvement in Human Working Memory. *NeuroImage* **5**, 49–62 (1997).
34. The jamovi project. *jamovi (Version 1.2)* (2020).
35. Jenkinson, M., Bannister, P., Brady, M. & Smith, S. Improved optimization for the robust and accurate linear registration and motion correction of brain images. *NeuroImage* **17**, 825–841 (2002).
36. Smith, S. M. Fast robust automated brain extraction. *Hum. Brain Mapp.* **17**, 143–155 (2002).
37. Beckmann, C. F. & Smith, S. M. Probabilistic independent component analysis for functional magnetic resonance imaging. *IEEE Trans. Med. Imaging* **23**, 137–152 (2004).
38. Abraham, A. *et al.* Machine learning for neuroimaging with scikit-learn. *Front. Neuroinformatics* **8**, (2014).
39. Rottschy, C. *et al.* Modelling neural correlates of working memory: A coordinate-based meta-analysis. *Neuroimage* **60**, 830–846 (2012).
40. Emch, M., von Bastian, C. C. & Koch, K. Neural Correlates of Verbal Working Memory: An fMRI Meta-Analysis. *Front. Hum. Neurosci.* **13**, (2019).
41. Charroud, C. *et al.* Working memory activation of neural networks in the elderly as a function of information processing phase and task complexity. *Neurobiol. Learn. Mem.* **125**, 211–223 (2015).
42. Demeter, E., Hernandez-Garcia, L., Sarter, M. & Lustig, C. Challenges to attention: A continuous arterial spin labeling (ASL) study of the effects of distraction on sustained attention. *NeuroImage* **54**, 1518–1529 (2011).

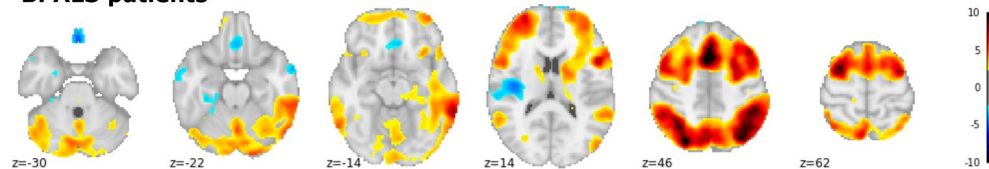
43. Engstrom, M., Landtblom, A.-M. & Karlsson, T. Brain and effort: brain activation and effort-related working memory in healthy participants and patients with working memory deficits. *Front. Hum. Neurosci.* **7**, (2013).
44. Keller, J. *et al.* Functional reorganization during cognitive function tasks in patients with amyotrophic lateral sclerosis. *Brain Imaging Behav.* (2017) doi:10.1007/s11682-017-9738-3.
45. Schoenfeld, M. A. *et al.* Functional motor compensation in amyotrophic lateral sclerosis. *J. Neurol.* **252**, 944–952 (2005).
46. Witiuk, K. *et al.* Cognitive Deterioration and Functional Compensation in ALS Measured with fMRI Using an Inhibitory Task. *J. Neurosci.* **34**, 14260–14271 (2014).
47. Gregory, J. M. *et al.* Executive, language and fluency dysfunction are markers of localised TDP-43 cerebral pathology in non-demented ALS. *J. Neurol. Neurosurg. Psychiatry* **91**, 149–157 (2020).
48. Abrahams, S. *et al.* Verbal fluency and executive dysfunction in amyotrophic lateral sclerosis (ALS). *Neuropsychologia* **38**, 734–747 (2000).
49. Evdokimidis, I. *et al.* Frontal lobe dysfunction in amyotrophic lateral sclerosis. *J. Neurol. Sci.* **195**, 25–33 (2002).
50. Meier, S. L., Charleston, A. J. & Tippett, L. J. Cognitive and behavioural deficits associated with the orbitomedial prefrontal cortex in amyotrophic lateral sclerosis. *Brain J. Neurol.* **133**, 3444–3457 (2010).
51. Nyberg, L. *et al.* Longitudinal evidence for diminished frontal cortex function in aging. *Proc. Natl. Acad. Sci. U. S. A.* **107**, 22682–22686 (2010).
52. Poletti, B. *et al.* The Arrows and Colors Cognitive Test (ACCT): A new verbal-motor free cognitive measure for executive functions in ALS. *PLoS One* **13**, e0200953 (2018).

Figures and tables

A. Controls



B. ALS patients



C. Controls vs. ALS patients

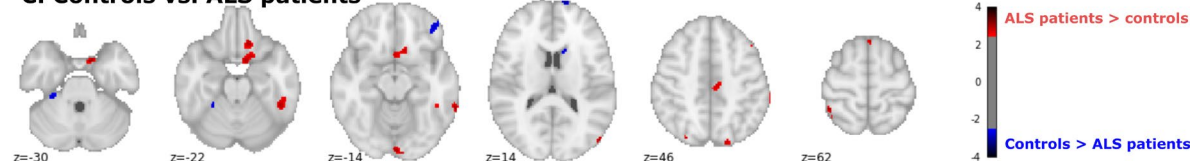
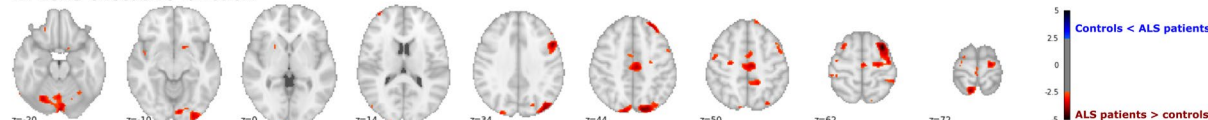
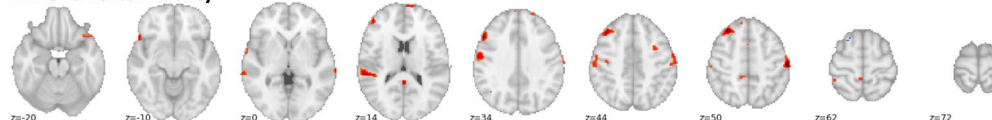


Figure 1. Brain activity during 2-back > 0-back contrast. Brain activity as computed as a group means of controls (A) and ALS patients (B) and group contrasts of controls vs. ALS patients (C, with brain activity in ALS patients > controls in red and brain activity in controls > ALS patients in blue). Computed by FSL Randomise, 5000 permutations, thresholded at $T > 2.5$.

A. ECAS executive function



B. ECAS verbal fluency



C. ECAS language function

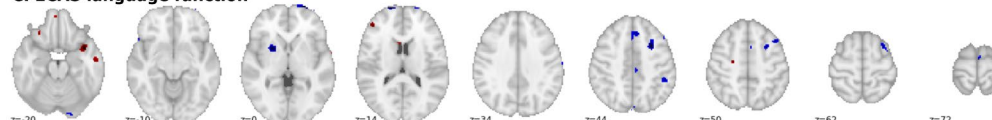


Figure 2. Group comparisons of the association of brain activity during 2-back > 0-back contrast with neuropsychological function. Group comparisons of regression analyses of the ECAS subdomains executive function (A), verbal fluency (B) and language function (C) on brain activity in the 2-back minus 0-back contrast. Computed by FSL Randomise, 5000 permutations, thresholded at $T > 2.5$.

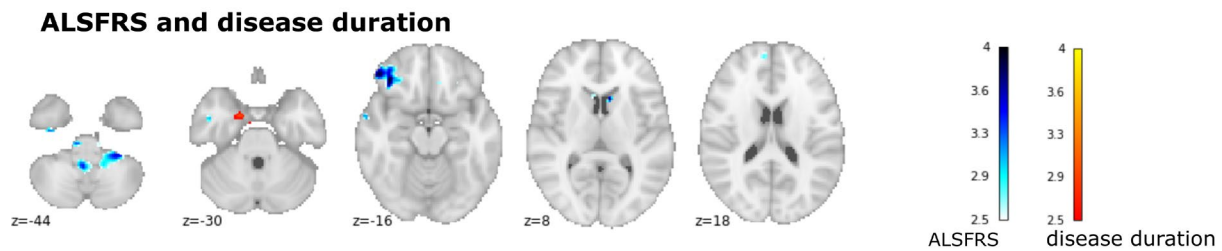


Figure 3. Interaction of brain activity during 2-back > 0-back contrast with clinical variables. Regression of ALSFRS-R (in red-yellow) and disease duration (in blue) on brain activity in ALS patients (computed by FSL Randomise, 5000 permutations, thresholded at $T > 2.5$). The ALSFRS was positive associated with brain activity of frontocerebellar regions and disease duration was positively associated with brain activity of the left temporal cortex.

Table 1. Means and standard deviations (S.D.) of demographical data of ALS patients and controls and clinical characteristics of the patients. There were no significant differences in demographical data (age, gender, education) between groups.

Table 2. Means and standard deviations (S.D.) of the neuropsychological screening using ECAS (Edinburgh Cognitive and Behavioural ALS Screen) in patients and controls. ANOVAS were used for comparison (here, uncorrected values are presented).

Supplementary material

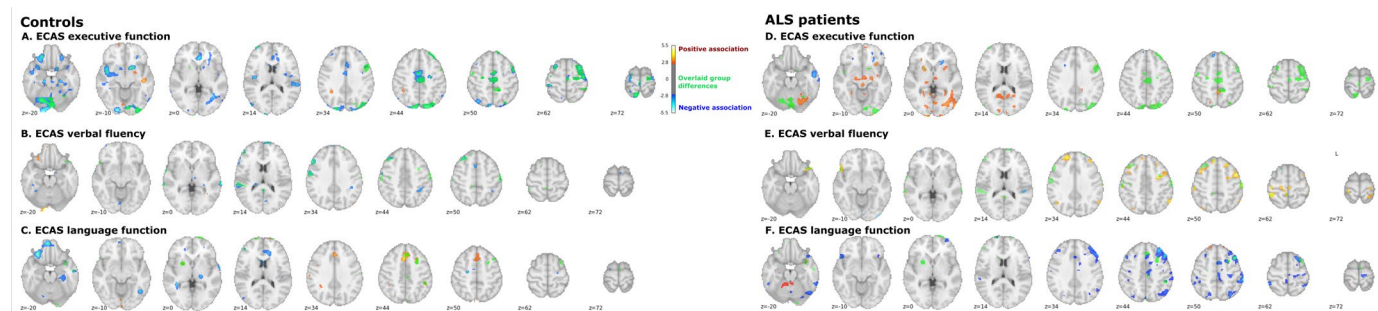


Figure S1. Group means of the interaction of brain activity and neuropsychological function during the 2-back minus 0-back contrast. Group means of the regression analyses of the ECAS subdomains in controls (A-C) and ALS patients (D-F) on brain activity in the 2-back minus 0-back contrast with positive (in red) and negative associations (in blue). Additional display of the group contrasts ALS patients vs. controls (as seen in Figure 2).

Table S1. Means and standard deviations (S.D.) of reaction times and accuracies of the 2- of patients and controls in the 0-back and 2-back condition of the n-back-task.

554 **Table S2. Regions of significant activity in the 2back > 0-back contrast in controls and**
555 **ALS patients and group comparison of effects of neuropsychological function on**
556 **brain activity.**
557

	Controls		ALS patients		p-value
	N = 21		N = 22		
	Mean	S.D.	Mean	S.D.	
Age (years)	63.45	8.15	62.64	9.06	0.759
Gender (W:M)	10:11		10:12		0.887
Education (years)	14.79	2.07	15.03	3.14	0.774
Site of onset (limb:bulbar)			14:8		
ALS phenotype (classical: flail limb)			21:1		
Disease duration (months)			22.60	21.56	
ALSFRRS-R			37.60	4.97	
genetic/sporadic ALS			1x c9orf72		
ALS-ni/ALS-ci			12:10		

Table 1. Means and standard deviations (S.D.) of demographical data of ALS patients and controls and clinical characteristics of the patients. There were no significant differences in demographical data (age, gender, education) between groups.

	Controls		ALS patients		p-value
	N = 21		N = 22		
	Mean	S.D.	Mean	S.D.	
Memory (max 24)	17.10	2.86	15.62	3.98	0.155
Visuospatial (max 12)	11.71	0.56	11.86	0.35	0.277
ALS-Non-specific functions (max 36)	28.76	2.98	27.18	4.00	0.140
Language (max 28)	27.76	0.63	26.59	1.99	0.019
Verbal fluency (max 24)	19.52	4.05	17.64	5.65	0.249
Executive function (max 48)	38.76	2.36	38.77	6.23	0.944
ALS-Specific functions (max 100)	86.05	5.76	83.00	11.78	0.272
ECAS total score (max 136)	110.90	13.56	114.00	7.28	0.155

Table 2. Means and standard deviations (S.D.) of the neuropsychological screening using ECAS (Edinburgh Cognitive and Behavioural ALS Screen) in patients and controls. ANOVAS were used for comparison (here, uncorrected values are presented).

	Healthy controls		ALS patients	
	N = 21		N = 22	
	Mean	S.D.	Mean	S.D.
0-back condition				
Accuracy (in %)	99.20	2.18	98.86	2.47
Reaction times (in ms)	494.71	37.10	547.68	73.03
2-back condition				
Accuracy (in %)	89.20	4.036	90.30	6.31
Reaction times (in ms)	656.07	84.42	677.58	128.70

Table S1. Means and standard deviations (S.D.) of reaction times and accuracies of the 2- of patients and controls in the 0-back and 2-back condition of the n-back-task.

Contrast	Cluster size	T-value	Max (X)	Max (Y)	Max (Z)	COG (X)	COG (Y)	COG (Z)	Area
Main effect in controls									
	32463	10.5	45	71	60	44.2	73.8	51	L + R inferior, middle, superior frontal gyrus, insula, anterior + middle cingulate cortex
	21715	9.63	28	30	54	42.5	32.8	49.5	L + R inferior + superior parietal lobule, precuneus
	66	3.48	53	54	45	53	54.5	44.9	L thalamus
	55	2.91	33	50	61	33	49.5	61.8	R white matter
	27	2.83	32	46	43	34.1	48.9	43	R thalamus
	21	2.86	62	18	35	62	17.8	35.1	L middle occipital gyrus
	15	2.72	51	67	38	50.9	67.5	38.1	L caudate nucleus
Main effect in ALS patients									
	60185	11.2	46	69	61	42.3	55.9	49.7	L + R inferior, middle, superior frontal gyrus, anterior + middle cingulate cortex, inferior + superior parietal lobule, insula
	46	3.24	33	50	63	33.4	50.4	63	R white matter
	32	2.95	21	39	12	22.6	39	12.1	R cerebellum
	14	2.79	37	36	33	36.9	36.1	33.2	R inferior temporal gyrus
	11	2.7	63	54	59	63.5	54.1	59	R lingual gyrus
	10	2.82	17	57	17	16.7	57.5	17.2	L precentral gyrus

Controls > ALS patients

108	2.87	24	85	29	23.5	84	30.2	R inferior frontal gyrus
55	3.48	40	96	47	39.3	96.4	45.8	R frontal pole
18	2.89	60	47	21	59.3	46.9	20.7	L cerebellum
18	2.88	39	71	43	38.6	71.3	42.8	R caudate nucleus

ALS patients > controls

275	3.16	39	66	21	40.3	70.7	27.1	R medial orbitofrontal cortex
112	3.27	22	42	26	21.3	42.8	26.2	R inferior temporal gyrus
47	3.09	13	42	28	13.3	42	27.6	R inferior temporal gyrus
41	2.84	41	53	59	41.7	52.3	59.5	R medial cingulate cortex
37	3.02	45	18	28	44.7	17.8	28.6	L cerebellum
36	3.24	36	21	58	35.6	21.3	57.8	R cuneus
31	2.94	64	39	35	64.4	38.7	34.8	L white matter
27	3.14	67	40	67	65.6	36.7	65.8	L inferior parietal lobule
17	2.8	62	76	34	61.8	75.7	34.4	R inferior temporal gyrus
13	2.86	44	76	67	44.5	73.7	68	L posterior-medial frontal gyrus
13	2.72	65	64	18	65.2	64.5	17.5	L inferior temporal gyrus
11	2.86	40	96	38	40.4	95.6	37.9	R frontal pole
10	2.7	17	59	16	17.5	58.7	16.6	L inferior frontal gyrus

Effect of disease duration (in ALS patients)

61	3.07	55	63	19	54.3	62.7	20.1	L parahippocampal gyrus
15	3.37	45	40	71	44.5	40.1	70.5	L primary motor cortex
13	2.92	72	73	37	71.5	73	36.8	L inferior frontal gyrus
10	2.75	61	42	59	60.9	42.2	58	L inferior parietal lobule

Effect of ALSFRS-R (in ALS patients)

639	4	47	40	11	42.9	40.6	12.2	L + R cerebellum
166	3.59	63	81	27	63.8	81.1	27.7	L inferior frontal gyrus
73	2.89	49	92	43	49.1	91.5	43.4	L superior medial gyrus
47	3.28	32	79	26	32.7	79.4	26.2	R middle orbital gyrus
36	2.98	36	60	18	36.8	59.5	18.6	R entorhinal cortex
34	3.39	58	49	72	58.4	49.9	71.8	L pre- and postcentral gyrus
29	2.98	76	63	27	75	62.8	27.1	L middle temporal gyrus
25	2.76	68	62	22	68.2	62.2	22.4	L middle temporal gyrus
24	3.34	41	72	38	40.8	71.7	38.1	R caudate nucleus
21	3.07	44	48	19	44.2	47.9	19	L+R brainstem
17	2.68	68	29	56	67.9	28.9	56.8	L angular gyrus
17	2.73	51	92	26	51.1	91.7	26.3	L superior orbital gyrus
14	3.32	45	70	70	45.4	70.8	69.4	L posterior-medial frontal gyrus

12	3.08	52	56	74	52.4	55.9	73.7	L paracentral lobule
10	2.91	51	18	26	51	17.8	26.3	L ventral visual cortex
10	2.82	53	29	26	52.9	28.8	26.2	L cerebellum
10	3	49	50	13	48.9	49.9	13.6	L brainstem

Effect of ECAS executive function in ALS patients > controls

1172	4.93	29	68	66	27.5	63.6	63.4	R middle + superior frontal gyrus, R precentral gyrus
693	3.92	43	21	28	47.5	25.8	26.6	L cerebellum
661	4.52	38	21	57	32.4	23.1	56.4	R inferior + superior parietal lobule, cuneus
480	3.87	43	54	60	43.7	53.2	60.6	L + R medial cingulate cortex
290	3.6	51	20	58	53.5	19.3	53.3	L superior parietal lobule, occipital lobe
163	3.69	31	16	32	30.4	16.8	31.5	R dorsal occipital cortex
150	3.93	30	84	57	29	82.7	56.9	R middle + superior frontal gyrus
137	3.22	38	41	61	40.7	40.5	61.4	R precuneus
112	4.03	50	35	72	50.6	35.2	71.1	L superior parietal lobule
88	2.98	43	62	61	44.5	62.1	60.2	R posterior-medial frontal gyrus
84	3.24	30	58	47	29.6	58.4	46.3	R white matter
61	3.2	37	68	29	37.5	67.4	28.9	R medial orbitofrontal cortex
58	3.48	60	68	66	59.1	68.4	66.2	L middle + superior frontal gyrus

54	2.99	67	58	65	67.3	58.9	63.6	L precentral gyrus
50	3.27	22	42	66	24.6	42.6	66.7	R postcentral gyrus
41	2.84	32	44	22	30.3	45.4	21.9	R cerebellum, R fusiform gyrus
40	3.22	58	56	60	58.2	55.8	60.4	L white matter
37	2.91	24	41	23	24.1	40.4	23	R fusiform gyrus
36	2.8	20	49	42	21	50.9	41	R superior temporal gyrus
27	2.8	30	34	25	29.9	34.4	25.1	R cerebellum
26	2.76	68	47	67	66.3	46.7	66.7	L postcentral gyrus
22	3.64	51	57	74	52	56.7	74	L posterior-medial frontal gyrus
21	3.13	64	92	42	63.8	91.8	41.5	L superior parietal lobule
21	2.87	48	28	64	48.6	27.4	63.6	L middle frontal gyrus
20	2.77	63	29	63	61.6	28.5	62.6	L superior parietal lobule
18	3.08	38	86	60	38.2	86.1	60.1	R superior frontal gyrus
16	2.72	33	56	57	32.6	56.4	57.1	R white matter
15	2.99	58	60	70	57	60.3	70.7	L superior frontal gyrus
14	3.09	68	56	40	68.4	56.6	40	L superior temporal gyrus
10	2.68	61	68	25	61.3	68.3	24.6	L temporal pole
10	2.72	55	68	37	55.5	68	36.7	L putamen
Effect of ECAS verbal fluency in ALS patients > controls								
373	3.92	71	46	44	74.2	51.1	41.3	L superior temporal gyrus

282	4.19	60	78	61	64.9	76.1	56.9	L middle frontal gyrus
259	3.55	75	59	53	73.6	58.1	54.8	L postcentral gyrus, L inferior parietal lobule
232	3.66	50	96	48	47.9	95.2	46.3	L superior frontal gyrus, L superior
186	4.29	16	54	60	16.7	53.3	60.7	R precentral + postcentral gyrus
132	3.4	47	43	64	47.3	43.2	64.4	L precuneus
76	3.43	28	45	70	27.9	48.3	69.6	R precentral + postcentral gyrus
76	4.02	64	87	49	65.2	86.4	47	L middle frontal gyrus
66	2.97	65	34	51	66.2	34.8	49.1	L angular gyrus
64	3.26	67	42	65	66.8	42.7	64.8	L postcentral gyrus
51	3.35	27	74	24	25.8	74.1	24.5	R inferior frontal gyrus
46	2.96	29	65	57	29	65.4	57.2	R white matter
42	3.88	45	40	43	45.3	40	42.8	unknown
28	3.47	70	72	30	69.6	72.4	29.5	L temporal pole
24	3.17	12	57	38	11.7	56.7	38.6	R superior temporal gyrus
21	2.87	46	66	63	45.5	66.8	62.6	L posterior-medial frontal gyrus
20	2.86	35	90	54	35.1	89.7	53.9	R superior frontal gyrus
19	3.02	79	47	36	78	46.5	35.8	L middle temporal gyrus
15	2.91	65	55	58	64.8	55.1	57.7	L postcentral gyrus
13	2.94	44	61	71	43.6	60.8	70.5	R posterior-medial frontal gyrus
12	2.72	62	44	68	60.6	43.8	68.7	L postcentral gyrus

11	2.77	49	84	63	49.4	84.9	60.7	L superior medial gyrus
----	------	----	----	----	------	------	------	-------------------------

Effect of ECAS language function in ALS patients > controls

71	3.5	26	68	26	26.5	67.2	25.6	R temporal pole
----	-----	----	----	----	------	------	------	-----------------

48	3.43	68	84	41	67.9	84.2	41.2	L inferior temporal gyrus
----	------	----	----	----	------	------	------	---------------------------

34	2.87	17	58	25	17.3	58.3	25.4	R middle temporal gyrus
----	------	----	----	----	------	------	------	-------------------------

31	3.16	57	57	62	56.9	56.8	62.5	L precentral gyrus
----	------	----	----	----	------	------	------	--------------------

19	2.96	18	65	24	18.4	64.8	24.2	R middle temporal gyrus
----	------	----	----	----	------	------	------	-------------------------

16	2.78	47	91	27	47.6	90.9	27.1	L frontal pole
----	------	----	----	----	------	------	------	----------------

13	2.73	60	78	26	59.5	78.2	26.2	L inferior frontal gyrus
----	------	----	----	----	------	------	------	--------------------------

11	2.87	13	63	37	13.5	62.8	37.6	R superior temporal gyrus
----	------	----	----	----	------	------	------	---------------------------

Effect of ECAS language function in controls > ALS patients

141	4.01	56	18	22	58.1	20	21.8	L cerebellum
-----	------	----	----	----	------	----	------	--------------

135	3.12	42	78	57	43.9	77.2	56.8	R superior medial gyrus
-----	------	----	----	----	------	------	------	-------------------------

124	3.56	32	69	58	31.5	69	58.5	R middle frontal gyrus
-----	------	----	----	----	------	----	------	------------------------

92	3.21	24	44	56	23.2	43.6	56.2	R supramarginal gyrus
----	------	----	----	----	------	------	------	-----------------------

76	3.48	57	67	36	57.1	66.8	35.6	L putamen
----	------	----	----	----	------	------	------	-----------

46	3.14	26	72	63	25.4	72.2	61.5	R middle frontal gyrus
----	------	----	----	----	------	------	------	------------------------

39	4.05	54	97	42	52.9	96.6	43.5	L superior frontal gyrus
----	------	----	----	----	------	------	------	--------------------------

37	3.06	43	51	56	42.8	51.1	56.4	R medial cingulate cortex
23	3.31	27	65	66	28.3	66.7	66.4	R superior frontal gyrus
15	3.35	44	77	65	44.4	77.1	64.5	L superior medial gyrus
12	2.63	64	44	55	63.7	44.3	55	L inferior parietal lobule
12	2.94	33	97	41	34.8	96.6	43.6	R superior frontal gyrus
11	2.65	41	98	39	41.2	97.4	40.3	R posterior-medial frontal gyrus
11	3.51	44	60	71	43.6	60	71.2	R superior medial gyrus

Table S2. Regions of significant activity in the 2back > 0-back contrast in controls and ALS patients and group comparison of effects of neuropsychological function on brain activity.