

1 **Title:** Blood-based host biomarker diagnostics in active case finding for pulmonary
2 tuberculosis: a diagnostic accuracy study

3 **Authors**

4 Flora Martinez Figueira Moreira, MS,¹ Renu Verma, PhD,² Paulo Cesar Pereira dos Santos,
5 BS,¹ Alessandra Leite, BS,¹ Andrea da Silva Santos, PhD,¹ Rafaele Carla Pivetta de Araujo,
6 MS,¹ Bruna Oliveira da Silva, BS,¹ Júlio Henrique Ferreira de Sá Queiroz, MS,¹ David H.
7 Persing, PhD,³ Erik Södersten, PhD,⁴ Devasena Gnanashanmugam, MD,⁵ Purvesh Khatri,
8 PhD,² Julio Croda, PhD,^{5,6,7*} Jason R. Andrews, MD^{2,*}

9 **Affiliations**

- 10 1. Faculty of Health Sciences, Federal University of Grande Dourados, Dourados, MS,
11 Brazil
12 2. Stanford University School of Medicine, Stanford, CA, USA
13 3. Cepheid, Sunnyvale, CA, USA
14 4. Cepheid AB, Solna, Sweden
15 5. Oswaldo Cruz Foundation, Campo Grande, MS, Brazil
16 6. School of Medicine, Federal University of Mato Grosso do Sul, Campo Grande, MS,
17 Brazil
18 7. Yale School of Public Health, New Haven, CT, USA

19 *Contributed equally

20 **Correspondence**

21 Jason Andrews, MD
22 Division of Infectious Diseases and Geographic Medicine
23 Stanford University School of Medicine
24 Biomedical Innovations Building, Rm 3458
25 240 Pasteur Dr.
26 Stanford, CA 94305
27 Email: jandr@stanford.edu
28 Phone: +1 650 497 2679

29

30 **Abstract Word Count:** 250

31 **Word Count:** 3,218

32 **Tables:** 2

33 **Figures:** 4

34 **References:** 28

35 **Summary**

36 **Background:** There is a need to identify scalable tuberculosis screening strategies among high
37 burden populations. The WHO has identified a non-sputum-based triage test as a development
38 priority.

39 **Methods:** We performed a diagnostic accuracy study of point-of-care C-reactive protein (CRP)
40 and Xpert-MTB-Host-Response (Xpert-MTB-HR) assays in the context of a mass screening
41 program for tuberculosis in two prisons in Brazil. Incarcerated individuals irrespective of
42 symptoms were screened by sputum Xpert-MTB/RIF and sputum culture. CRP was quantified
43 in serum by a point-of-care assay (iChroma-II) and a 3-gene expression score was quantified
44 from whole blood using the Xpert-MTB-HR cartridge. We evaluated receiver operating
45 characteristic area under the curve (AUC) and assessed specificity at 90% sensitivity and
46 sensitivity at 70% specificity, consistent with WHO target product profile (TPP) benchmarks.

47 **Findings:** Two hundred controls and 100 culture- or Xpert-positive tuberculosis cases
48 were included. Half of tuberculosis cases and 11% of controls reported any tuberculosis
49 symptoms. AUC for CRP was 0.79 (95% CI: 0.73-0.84) and for Xpert-MTB-HR was 0.84
50 (95% CI: 0.79-0.89). At 90% sensitivity, Xpert-MTB-HR had significantly higher specificity
51 (53.0%, 95% CI: 45.0-69.0%) than CRP (28.1%, 95% CI: 20.2-41.8%) (p=0.003). Among
52 individuals with medium or high sputum Xpert semi-quantitative load, sensitivity (at 70%
53 specificity) of CRP (90.3%, 95% CI: 74.2-98.0) and Xpert-MTB-HR (96.8%, 95% CI: 83.3-
54 99.9%) was higher.

55 **Interpretation:** For active case finding in this high tuberculosis-burden setting, CRP and
56 Xpert-MTB-HR did not meet TPP benchmarks for a triage test. However, Xpert-MTB-HR was
57 highly sensitive in detecting individuals with medium or high sputum bacillary burden.

58 **Funding:** National Institutes of Health (R01 AI130058 and R01 AI149620) and Brazilian
59 National Council for Scientific and Technological Development (CNPq-404182/2019-4).
60 Xpert-MTB-HR cartridges were provided by Cepheid.

61 **Keywords:** tuberculosis; diagnostic; host response; biomarker; triage; active case finding

62 Introduction

63

64 Despite advances in its diagnosis and treatment, tuberculosis (TB) is still the leading cause of
65 death among infectious diseases worldwide. It is estimated that 10 million people developed
66 the disease and 1.4 million died from the infection in 2019.¹ Delays in diagnosis of active TB
67 contribute to ongoing transmission of infection and hinder the reduction of disease burden. The
68 World Health Organization's "End TB Strategy" proposed a set of actions to reduce the global
69 incidence of TB by 2035, among which are the development of new efficient clinical tools for
70 a fast and accurate diagnosis and systematic screening in high-risk groups to contribute to early
71 detection of the diseases.²⁻⁴

72 Timely detection and treatment of cases are central elements in the control of TB transmission.
73 This is particularly critical in high TB risk environments, such as prisons. Globally, prisons
74 consistently harbor a very high burden of TB, with rates that are often >30 times higher than
75 those of local non-incarcerated communities.⁵ Overcrowding, insufficient sanitation, poor
76 ventilation and inadequate health care in prisons facilitate the spread and persistence of TB and
77 other infectious diseases in these environments. In Central and South America, TB notifications
78 in prisons have increased by 269% since 2000, driven primarily by growth in the size of the
79 incarcerated population.⁶ Recent studies in Brazil have demonstrated that the prevalence of
80 active TB among incarcerated individuals exceeds 3 900 cases per 100 000 persons, among the
81 highest reported in the world.⁷ There is an urgent need for more effective strategies for early
82 case detection among high TB burden populations.

83 One of major obstacles to early TB diagnosis is that most approaches depend upon testing of
84 sputum, which individuals with less advanced disease may not consistently produce. In
85 response to this challenge, the WHO has endorsed a target product profile (TPP) for a non-
86 sputum based triage test that achieves high sensitivity in screening for active TB.³ There has
87 been considerable effort undertaken to develop and validate blood-based biomarkers for TB,
88 many focusing upon host immune response markers, including metabolomic, proteomic and
89 transcriptomic signatures of disease.⁸ Sweeney and colleagues found that a score based on three
90 differentially expressed genes (*GBP5*, *DUSP3* and *KLF2*) had high accuracy as a screening test
91 for active TB across multiple published cohorts.⁹ This signature was subsequently validated
92 for diagnosis of TB and prediction of progression from infection to disease in independent
93 cohorts.¹⁰ Based on these findings, Cepheid (Sunnyvale, CA, EUA) developed an assay on
94 their Xpert platform, cartridge-based RT-PCR assay (Xpert-MTB-HR) that quantifies the
95 relative mRNA levels of these 3 genes in a whole blood sample. A recent study demonstrated
96 its potential in triage and diagnosis of active TB among people living with HIV and presenting
97 to healthcare facilities with TB symptoms.¹¹ Whether this assay would perform well for active
98 case finding, irrespective of symptoms, in a low HIV prevalence setting is unknown. To address
99 this knowledge gap, we performed a diagnostic evaluation study nested within a prospective
100 active TB case finding study in prisons, evaluating the accuracy of a blood based 3-gene
101 signature assay as potential in triage and diagnosis of active TB.

102 **Methods**

103 *Study design and participants*

104 This nested diagnostic evaluation study was part of larger prospective mass TB screening study
105 conducted in two prisons (Estabelecimento Penal Jair Ferreira de Carvalho [EPJFC] and
106 Penitenciaria Estadual de Dourados [PED] in Mato Grosso do Sul, Brazil.⁷ Between April 2018
107 and May 2020, we recruited all incarcerated individuals ages ≥ 18 years at both study prisons.
108 After obtaining informed consent, we administered a standardized questionnaire to collect
109 demographic and clinical information, including TB related symptoms as defined by WHO
110 guidelines.¹² The selection criteria for this study were the collection and availability of a whole-
111 blood sample and at least one spot sputum sample at enrollment.

112 *Laboratory procedures*

113 All participants were instructed to produce a sputum sample with a target volume of at least 2
114 mL. Sputum samples were tested at study entry by Xpert MTB/RIF G4 (prior to January, 2020)
115 or Xpert Ultra (after January, 2020; Cepheid, Sunnyvale, CA, USA) along with culture on
116 Ogawa-Kudoh media. Whole-blood samples were collected in PAXgene tubes (Becton
117 Dickinson, Franklin Lakes, USA) to preserve RNA and in BD Vacutainer tubes (Becton
118 Dickinson, Franklin Lakes, USA) to obtain serum. PAXgene tubes and serum samples were all
119 collected within 14 days of first sputum sample collection (92% on same day) and were
120 preserved in temperature-controlled freezers at -80°C from collection until testing. C-reactive
121 protein (CRP) concentrations were measured on serum samples with a point-of-care assay
122 (iChromaTM II, Boditech, South Korea), which has a dynamic range of 2.5-300 mg/L. The
123 cartridge-based RT-PCR assay (Xpert-MTB-HR) was performed using 380 μL of PAXgene-
124 preserved whole blood. The aliquot was centrifuged, supernatant decanted, and pellet was
125 resuspended in a lysis buffer and vortexed before transfer to the Xpert-MTB-HR cartridge. The
126 samples then were analyzed on a GeneXpert machine, which generates a TB-score calculated
127 from cycle threshold values for the 3-genes according to the formula developed by Sweeney
128 and colleagues.¹⁰ When using PCR-based measurement technology, lower scores by this
129 method have been associated with TB disease. Sample preparation time was 15 minutes and
130 GeneXpert run time was 50 minutes. All participants were administered a rapid HIV test and
131 evaluated through a nursing and medical examination. QuantiFERON-TB Gold Plus assays
132 (QFT-Plus) (Qiagen, Hilden, Germany) were performed among participants without active TB,
133 according to the manufacturer's instructions.

134 *Outcome Definitions*

135 We followed national Brazilian guidelines and WHO definitions for TB diagnosis. We defined
136 a microbiologically confirmed TB case as any individual with a positive sputum Xpert
137 MTB/RIF or sputum culture. Non-microbiologically confirmed (clinically defined) TB cases
138 were not available for inclusion in this study. Controls were defined as individuals with
139 negative sputum Xpert MTB/RIF and culture, who were clinically evaluated and not believed
140 to have active TB disease. All controls had been previously screened within the past year and
141 had a chest x-ray score by CAD4TB < 60 . Additionally, we searched the state Sistema de
142 Informação de Agravos de Notificação (SINAN) data, in which all tuberculosis cases are
143 reported, for six months following enrollment to determine whether any of the control
144 participants were subsequently diagnosed with TB. QFT-Plus results were interpreted as
145 positive when IFN- γ concentration in the *M. tuberculosis* (*Mtb*) antigen tube was ≥ 0.35 IU/mL
146 as defined by the manufacturer.

147 *Statistical analysis*

148 We compared Xpert-MTB-HR scores and serum CRP concentrations between
149 microbiologically confirmed TB cases and controls, using Wilcoxon sign rank tests for paired
150 samples. We evaluated the linear correlation between Xpert-MTB-HR and CRP concentrations
151 among cases and controls. For CRP in linear analyses, values less than 2.5 mg/L (the lower
152 limit of the reporting range) were set as 2.5 mg/L. We also compared Xpert-MTB-HR scores
153 and serum CRP concentrations among cases with controls stratified by QFT-Plus positivity
154 status. We calculated the receiver operating characteristic (ROC) area under the curve (AUC)
155 comparing TB cases and controls for Xpert-MTB-HR and CRP. We compared AUC using
156 DeLong's test. To evaluate performance at WHO benchmarks, we calculated specificity at 90%
157 sensitivity, and sensitivity at 70% specificity, along with 95% confidence intervals. We further
158 investigated the sensitivity according to Xpert MTB/RIF cycle threshold (Ct) value and semi-
159 quantitative load from sputum samples. This analysis was restricted to cases identified by Xpert
160 MTB/RIF G4, as semiquantitative results and cycle thresholds are different for Xpert Ultra.
161 We examined sensitivity for Xpert MTB/RIF Ct under 28.0, a threshold identified by a recent
162 multi-country study as being 95% sensitive and 54% specific for smear positivity.¹³ We
163 selected a sample size of 100 cases and 200 controls to achieve precision in 95% confidence
164 interval of $< \pm 6.5\%$ for the expected sensitivity of 90% and specificity of 70%. All analyses
165 were performed using R, and ROC analyses were performed using the pROC package.¹⁴

166 *Ethical considerations*

167 All participants in the study provided informed consent. This study was approved by Federal
168 University of Grande Dourados, the National Committee on Research Ethics
169 (#44997115.1.0000.5160 and #2.195.047), and the Institutional Review Board and Stanford
170 University (#40285). This study conforms to the Standards for Reporting of Diagnostic
171 Accuracy Studies (STARD) reporting guideline.¹⁵

172 Results

173 Between April, 2018 and May, 2020, we screened 4,250 incarcerated individuals in two
174 prisons, of whom 1,751 were able to provide sputum for testing. Among these, 131 were
175 positive by sputum Xpert or culture, 1456 were negative by sputum Xpert and culture, and 129
176 were not positive but lacked one of the two assays due to insufficient sputum volume
177 (**Appendix Figure A1**). From these, we selected consecutive patients for whom baseline serum
178 and PAXgene RNA samples were available and included 100 individuals with
179 microbiologically confirmed TB and 200 individuals who were negative for TB by sputum
180 Xpert MTB/RIF, culture, and clinical evaluation.

181 Among the 100 TB cases, Xpert MTB/RIF results were available for 96, and 93 (97%) were
182 positive (85 by Xpert G4 [before January, 2020]; 8 by Xpert Ultra [after January, 2020]). Seven
183 cases were identified by culture only. All participants were incarcerated at the time of
184 enrollment, and the median age was slightly younger among TB cases (median age: 31 years,
185 IQR 25, 37) compared with controls (median age: 34 years, IQR 28, 39). A lower proportion
186 of cases self-identified as Indigenous (7% vs 17%; $p=0.028$). TB cases were more likely to
187 report illicit drug use in the past year (80% vs 50%, $p<0.0001$), previous incarceration (87 vs
188 54%, $p<0.0001$), and a known TB contact (82% vs 53%, $p<0.0001$). Overall, half of TB cases
189 reported any WHO TB symptom, compared with only 11% of controls ($p<0.0001$). The most
190 common symptom was cough, reported by 45% of cases and 10% of controls. Four individuals
191 with active TB (4%) were HIV co-infected, compared with none of the controls. Among
192 controls, 92 (46%) were QFT-Plus positive (**Table 1**). Ninety-two percent (276/300) of serum
193 and PAXgene RNA samples were collected on the same day as the first sputum sample
194 collection and 98% (293/300) were collected within 7 days.

195 Compared with controls, TB cases had higher CRP values (9.39 vs <2.5 mg/L; $p<0.0001$) and
196 lower Xpert-MTB-HR scores (1.69 vs 2.72; $p<0.0001$) (**Figure 1**). CRP and Xpert-MTB-HR
197 values were negatively correlated (spearman's $\rho = -0.44$, $p<0.0001$), and the correlation was
198 much stronger among TB cases ($\rho = -0.68$, $p<0.0001$) than controls ($\rho = 0.01$, $p=0.874$)
199 (**Figure 2**). Area under the curve in distinguishing TB cases from controls was non-
200 significantly higher for Xpert-MTB-HR (0.84, 95% CI: 0.79-0.89) than for CRP (AUC 0.79,
201 95% CI: 0.73-0.84; p -value for ROC comparison = 0.105) (**Figure 3**). At 90% sensitivity, the
202 specificity of CRP was 28.1% (95% CI: 20.2-41.8%) and the specificity of Xpert-MTB-HR
203 was 53.0% (33.5-67.0%) (p -value for comparison, 0.003). At 70% specificity, the sensitivity
204 of CRP was 72% (95% CI: 62.1%-80.5%) and sensitivity of Xpert-MTB-HR was 82% (95%
205 CI: 73.1-89.0%) (p -value for comparison, 0.074).

206 Among TB cases, CRP and Xpert-MTB-HR values correlated with sputum semi-quantitative
207 Xpert MTB/RIF G4 values, which are based on PCR cycle thresholds. Compared with TB
208 cases with "very low" MTB quantities, those with "medium" or "high" quantities had higher
209 CRP (median: 20.4 vs <2.5 mg/L; $p<0.0001$) and lower Xpert-MTB-HR scores (median: 1.06
210 vs 2.20; $p<0.0001$) (**Figure 4a**). At the WHO TPP specificity target of 70%, the sensitivities
211 of CRP and Xpert-MTB-HR were strongly correlated with sputum semi-quantitative Xpert
212 MTB/RIF values (**Table 2**). Among 29 individuals with negative or very low semi-quantitative
213 loads, CRP sensitivity was 44.8% and Xpert-MTB-HR sensitivity was 69.0% (p -value for
214 comparison, 0.111), whereas among the 31 individuals with medium or high semiquantitative
215 loads, CRP sensitivity was 90.3% and Xpert-MTB-HR sensitivity was 96.8% (p -value, 0.612).
216 CRP (spearman's ρ , -0.57; $p<0.0001$) and Xpert-MTB-HR (spearman's ρ , 0.54, $p<0.0001$)
217 values also correlated with sputum Xpert MTB/RIF Ct values (**Figure 4b**). Among 57
218 participants with sputum Xpert MTB/RIF Ct < 28.0 , sensitivity of CRP (at 70% specificity)
219 was 81.3% and sensitivity of Xpert-MTB-HR was 89.1%.

220 CRP and Xpert-MTB-HR scores did not differ among TB cases with and without symptoms
221 (p=0.541 for CRP; p=0.893 for Xpert MTB-HR). Among controls, CRP and Xpert-MTB-HR
222 values did not differ by QFT-Plus status (p=0.211 for CRP; p=0.802 for Xpert-MTB-HR).

223 Discussion

224

225 Active case finding through systematic screening can be an effective means for early detection
226 of TB in high-risk populations, preventing onward transmission. However, performing active
227 case finding effectively and efficiently poses challenges, as diagnostics may not perform well
228 in individuals who have less advanced disease, fewer symptoms, and may be unable to provide
229 adequate sputum samples. To address this need, a target product profile was developed for a
230 non-sputum-based triage test that could achieve high sensitivity (>90%) to identify individuals
231 for further diagnostic evaluation.³ We tested two candidate triage diagnostics—point-of-care
232 CRP and a new gene expression based rapid molecular diagnostic—from blood samples
233 collected during systematic mass screening for TB conducted in two high TB-burden prisons,
234 where we recently reported active TB prevalence of 3 900 per 100 000.⁷ We found that both
235 diagnostics had moderate accuracy in distinguishing microbiologically confirmed cases from
236 controls, with Xpert-MTB-HR achieving higher overall accuracy than CRP. At 90%
237 sensitivity, specificity of Xpert-MTB-HR was 53%, the latter falling below the target of 70%.
238 However, both diagnostics had greater sensitivity among individuals with higher MTB burden
239 as measured by Xpert MTB/RIF semi-quantitative load in sputum, suggesting that they may
240 identify individuals with greatest potential for transmission.

241 A number of studies have evaluated gene expression signatures for identifying individuals with
242 active or incipient TB.^{16–19} However, there have been few studies investigating performance of
243 these biomarkers in active case finding irrespective of symptoms, and these earlier studies used
244 laboratory-based assays rather than rapid molecular diagnostics.¹⁰ The Xpert-MTB-HR test
245 was implemented in a closed system cartridge that quantifies the relative mRNA levels of 3
246 genes in a whole blood sample. Our results corroborate a previous study conducted by
247 Södersten and colleagues in a very different population and clinical setting—screening HIV-
248 infected individuals presenting with TB symptoms to clinics in South Africa and Peru—which
249 demonstrated feasibility of measuring the 3-gene signature on this platform.¹¹ Consistent with
250 this and earlier studies on the 3-gene signature, we found that TB cases had lower Xpert-MTB-
251 HR scores, indicating higher expression levels (up-regulation) of *GBP5* and *DUSP3* compared
252 with *KLF2*, compared with controls.^{9–11,20} The AUC in this study (0.84) was lower than that
253 reported by Södersten (0.94 against sputum Xpert MTB/RIF),¹¹ but consistent with a previous
254 smaller evaluation of the 3-gene signature by laboratory-based qRT-PCR in this low HIV-
255 prevalence, actively screened population (0.87).¹⁰

256 Earlier studies have also investigated CRP testing for distinguishing individuals with active TB
257 from those without disease. High accuracy has been reported in some studies of HIV co-
258 infected patients,^{21,22} though there have been fewer studies assessing screening among HIV-
259 negative individuals, and performance has generally been poorer. A recent study among HIV-
260 negative inpatients in Uganda found specificity of 21% at sensitivity of 91%.²³ We are unaware
261 of any studies assessing C-reactive protein in the context of mass screening for active case
262 detection. We found the AUC to be 0.79 for the point-of-care CRP test in our study, consistent
263 with the moderate accuracy previously reported in HIV-uninfected individuals. Notably, even
264 among TB cases, the median CRP in our study was substantially lower (9.39 mg/L) than that
265 reported among HIV-infected TB patients in a two previous studies (32.0 mg/L and 51.3 mg/L)
266 by Yoon et al, which used the same device on serum and whole blood samples, respectively.
267 ^{21,24} Our findings may indicate that HIV-negative individuals have less systemic inflammation
268 in the setting of TB, perhaps consistent with the observation that HIV-infected individuals are
269 more likely to have disseminated disease.²⁵

270 Neither of the two diagnostics evaluated met the published TPP benchmarks for a non-sputum-
271 based diagnostic (>90% sensitivity and >70% specificity);³ however, the Xpert-MTB-HR

272 performed better (specificity 53% vs 28%). However, both assays performed well in
273 identifying individuals with medium or high *Mtb* semiquantitative load in sputum. At
274 specificity of 70%, CRP identified 90% (28/31) and Xpert-MTB-HR identified 97% (30/31)
275 patients with medium/high *Mtb* semiquantitative sputum Xpert® MTB/RIF result. Sputum
276 Xpert Ct values and semi-quantitative load have been shown to correlate with sputum smear,
277 ¹³ which in turn has been shown in multiple studies to predict infectiousness.^{26,27} It is thereby
278 conceivable that both of these diagnostics can reliably identify individuals who have high
279 bacillary burden and are more likely to transmit infection. Further studies are needed to
280 investigate whether these markers indeed identify these high transmission risk individuals, and
281 whether a triage test that identifies such individuals would be useful and cost-effective.

282 This study should be interpreted within the context of several limitations. First, all participants
283 were adult men. Our mass screening is focused in male prisons, as only two TB cases were
284 reported in the past year in female prisons, and our prior studies in female prisons demonstrated
285 a very low prevalence of TB in this state.²⁸ The absence of female representation may have
286 reduced the effects of confounding conditions like connective tissue disorders and pregnancy,
287 both of which can lead to CRP elevation. Second, control participants all had chest radiographs
288 with CAD4TB scores <60 one year prior, but this may have led to selection of controls with
289 less lung pathology, limiting generalizability. However, >80% of all individuals in the study
290 prisons have CAD4TB scores <60,⁷ suggesting that this group was still representative of the
291 prison population. Third, because this was done within the context of an ongoing mass
292 screening program, we used an older version of Xpert (G4) for the first part of the study and
293 switched to the more sensitive Xpert Ultra when it became available at the site in January,
294 2020; because the Ct values are not comparable between the two cartridges, we only analyzed
295 them for G4, which comprised 91% of the positive Xpert tests. Fourth, it is possible that some
296 of the individuals classified as controls had subclinical or incipient TB that was not detected
297 by sputum Xpert MTB/RIF or culture; we performed one sputum Xpert MTB/RIF and culture
298 on solid media. Using liquid media for culture, performing multiple Xpert tests or cultures, or
299 use of PET-CT could improve classification. However, we note that all treated TB cases in this
300 setting are mandatorily reported in an electronic database, which we reviewed six months after
301 screening; none of the controls were diagnosed with TB in the six months following screening.
302 This reduces the risk that controls were misclassified.

303 There is an urgent need for accurate, rapid tools for screening individuals at high risk of
304 tuberculosis, in order to focus further diagnostic testing and investigations. While Xpert MTB-
305 HR outperformed CRP testing in the context of mass screening in a low HIV-prevalence
306 population, it did not meet the WHO target product profile benchmarks for a triage test. These
307 findings may be related to the spectrum of disease observed in this setting. Most TB cases in
308 this population had low bacillary burden in their sputum, and half had no symptoms at the time
309 diagnosis, suggesting that mass screening identified them early in their disease course, when
310 they had less systemic inflammation. Among TB cases with medium or high bacillary burden,
311 Xpert-MTB-HR achieved >96% sensitivity at 70% specificity, indicating that it may identify
312 individuals with greater burden of infection and who might be more infectious. Further studies
313 are needed to evaluate its performance for active case finding in other populations, and to
314 determine whether it could be useful for averting transmission in high-risk settings.

315 **Contributors**

316 FM, RV, JC and JA designed the study. FM, PCPdS, AL, AdSS, RCPdA, BOdS, JHFdSQ
317 collected the data. FM and JA analyzed the data. RV, DHP, ES, DG, PK and JC assisted with
318 interpretation of the analyses. FM and JA wrote the first draft of the manuscript. All authors
319 critically revised and approved the manuscript.

320 **Declaration of interests**

321 PK is a co-inventor on a 3-gene TB score pending patent owned by Stanford University,
322 which has been licensed for commercialization. PK is a consultant with Cepheid. DHP, ES,
323 and DG are employed by Cepheid.

324 **Data sharing:** De-identified data will be made available by the corresponding author upon
325 request.

326 **References**

- 327
- 328 1 World Health Organization. Global Tuberculosis Report 2020. Geneva, 2020
 - 329 https://www.who.int/tb/publications/global_report/en/.
 - 330 2 World Health Organization. The End TB Strategy. Geneva, 2014
 - 331 https://www.who.int/tb/strategy/End_TB_Strategy.pdf?ua=1.
 - 332 3 World Health Organization. High-priority target product profiles for new tuberculosis
 - 333 diagnostics: report of a consensus meeting. 2014
 - 334 [https://apps.who.int/iris/bitstream/handle/10665/135617/WHO_HTM_TB_2014.18_en](https://apps.who.int/iris/bitstream/handle/10665/135617/WHO_HTM_TB_2014.18_eng.pdf?sequence=1)
 - 335 [g.pdf?sequence=1](https://apps.who.int/iris/bitstream/handle/10665/135617/WHO_HTM_TB_2014.18_eng.pdf?sequence=1).
 - 336 4 World Health Organization. Systematic screening for active tuberculosis: an
 - 337 operational guide. Geneva: World Health Organization, 2015
 - 338 <https://apps.who.int/iris/handle/10665/181164>.
 - 339 5 Baussano I, Williams BG, Nunn P, Beggiato M, Fedeli U, Scano F. Tuberculosis
 - 340 incidence in prisons: a systematic review. *PLoS Med* 2010; **7**: e1000381.
 - 341 6 Walter K, Martinez L, Arakaki-Sanchez, *et al*. The escalating tuberculosis crisis in
 - 342 Central and South American prisons. In press. *Lancet* 2020.
 - 343 7 Santos A da S, Oliveira RD de, Lemos EF, *et al*. Yield, Efficiency and Costs of Mass
 - 344 Screening Algorithms for Tuberculosis in Brazilian Prisons. *Clin Infect Dis* 2020; : 1–
 - 345 29.
 - 346 8 MacLean E, Broger T, Yerlikaya S, Fernandez-Carballo BL, Pai M, Denkinger CM. A
 - 347 systematic review of biomarkers to detect active tuberculosis. *Nat Microbiol* 2019; **4**:
 - 348 748–58.
 - 349 9 Sweeney TE, Braviak L, Tato CM, Khatri P. Genome-wide expression for diagnosis of
 - 350 pulmonary tuberculosis: a multicohort analysis. *Lancet Respir Med* 2016; **4**: 213–24.
 - 351 10 Warsinske HC, Rao AM, Moreira FMF, *et al*. Assessment of Validity of a Blood-
 - 352 Based 3-Gene Signature Score for Progression and Diagnosis of Tuberculosis, Disease
 - 353 Severity, and Treatment Response. *JAMA Netw Open* 2018; **1**: e183779.
 - 354 11 Södersten E, Ongarello S, Mantsoki A, *et al*. Diagnostic accuracy study of a novel
 - 355 blood-based assay # for identification of TB in people living with HIV. *J Clin*
 - 356 *Microbiol* 2020; : JCM.01643-20.
 - 357 12 Bone A, Aerts A, Grzemska M, *et al*. Tuberculosis control in prisons : a manual for
 - 358 programme managers. <https://apps.who.int/iris/handle/10665/66823>.
 - 359 13 Beynon F, Theron G, Respeito D, *et al*. Correlation of Xpert MTB/RIF with measures
 - 360 to assess Mycobacterium tuberculosis bacillary burden in high HIV burden areas of
 - 361 Southern Africa. *Sci Rep* 2018; **8**: 5201.
 - 362 14 Robin X, Turck N, Hainard A, *et al*. pROC: an open-source package for R and S+ to
 - 363 analyze and compare ROC curves. *BMC Bioinformatics* 2011; **12**: 77.
 - 364 15 Bossuyt PM, Reitsma JB, Bruns DE, *et al*. STARD 2015: an updated list of essential
 - 365 items for reporting diagnostic accuracy studies. *BMJ* 2015; **351**: h5527.
 - 366 16 Zak DE, Penn-Nicholson A, Scriba TJ, *et al*. A blood RNA signature for tuberculosis
 - 367 disease risk: a prospective cohort study. *Lancet* 2016; **387**: 2312–22.
 - 368 17 Suliman S, Thompson EG, Sutherland J, *et al*. Four-Gene Pan-African Blood
 - 369 Signature Predicts Progression to Tuberculosis. *Am J Respir Crit Care Med* 2018; **197**:
 - 370 1198–208.
 - 371 18 Warsinske H, Vashisht R, Khatri P. Host-response-based gene signatures for
 - 372 tuberculosis diagnosis: A systematic comparison of 16 signatures. *PLOS Med* 2019;
 - 373 **16**: e1002786.
 - 374 19 Gupta RK, Turner CT, Venturini C, *et al*. Concise whole blood transcriptional
 - 375 signatures for incipient tuberculosis: a systematic review and patient-level pooled

- 376 meta-analysis. *Lancet Respir Med* 2020; **482**: 1–28.
- 377 20 Francisco NM, Fang Y-M, Ding L, *et al.* Diagnostic accuracy of a selected signature
378 gene set that discriminates active pulmonary tuberculosis and other pulmonary
379 diseases. *J Infect* 2017; **75**: 499–510.
- 380 21 Yoon C, Semitala FC, Atuhumuza E, *et al.* Point-of-care C-reactive protein-based
381 tuberculosis screening for people living with HIV: a diagnostic accuracy study. *Lancet*
382 *Infect Dis* 2017; **17**: 1285–92.
- 383 22 Yoon C, Semitala FC, Asege L, *et al.* Yield and Efficiency of Novel Intensified
384 Tuberculosis Case-Finding Algorithms for People Living with HIV. *Am J Respir Crit*
385 *Care Med* 2019; **199**: 643–50.
- 386 23 Meyer AJ, Ochom E, Turimumahoro P, *et al.* C-Reactive Protein for Active
387 Tuberculosis Among Inpatients without HIV in Uganda: A Diagnostic Accuracy
388 Study. *J Clin Microbiol* 2020; : JCM.02162-20.
- 389 24 Yoon C, Davis JL, Huang L, *et al.* Point-of-Care C-Reactive Protein Testing to
390 Facilitate Implementation of Isoniazid Preventive Therapy for People Living With
391 HIV. *JAIDS J Acquir Immune Defic Syndr* 2014; **65**: 551–6.
- 392 25 Mihret A, Abebe M, Bekele Y, Aseffa A, Walzl G, Howe R. Impact of HIV co-
393 infection on plasma level of cytokines and chemokines of pulmonary tuberculosis
394 patients. *BMC Infect Dis* 2014; **14**: 125.
- 395 26 Behr M, Warren S, Salamon H, *et al.* Transmission of Mycobacterium tuberculosis
396 from patients smear-negative for acid-fast bacilli. *Lancet* 1999; **353**: 444–9.
- 397 27 Hernandez-Garduno E. Transmission of tuberculosis from smear negative patients: a
398 molecular epidemiology study. *Thorax* 2004; **59**: 286–90.
- 399 28 Carbone A da SS, Paião DSG, Sgarbi RVE, *et al.* Active and latent tuberculosis in
400 Brazilian correctional facilities: a cross-sectional study. *BMC Infect Dis* 2015; **15**: 24.
401

402 **Tables and Figures**

403 **Table 1. Sociodemographic and clinical characteristics of incarcerated individuals with and without TB.**

Variables	Total N=300 (%)	TB cases N=100 (%)	No TB N=200 (%)	p value
Median age [IQR]	33 [27, 38]	31 [25, 37]	34 [28, 39]	0.0005
Ethnicity				
Mixed	155 (52)	50 (50)	105 (52)	0.7141
White	63 (21)	24 (24)	39 (20)	0.3709
Black	39 (13)	17 (17)	22 (11)	0.1498
Indigenous	41 (14)	7 (7)	34 (17)	0.0198
Asian	2 (1)	2 (2)	0	0.1104
Less than 8 years of schooling	225 (75)	75 (75)	150 (75)	1
Current smoker	190 (63)	71 (71)	119 (59)	0.0571
Illicit drug use over the last year	180 (60)	80 (80)	100 (50)	<0.0001
BCG vaccination scar	255 (85)	84 (84)	171 (85)	0.7341
Previous TB	23 (7)	11 (11)	12 (6)	<0.0001
Know someone with TB	189 (63)	82 (82)	107 (53)	<0.0001
Report any WHO TB symptoms	73 (24)	50 (50)	23 (11)	<0.0001
Report cough	66 (22)	45 (45)	21 (10)	<0.0001
Previously incarcerated	196 (65)	87 (87)	109 (54)	<0.0001
HIV positive	4 (1)	4 (4)	0	0.0118
QuantiFERON positive	92/200 (46)	NA	92/200 (46)	..

404 IQR, Interquartile range. BCG, Bacillus Calmette-Guérin. TB, tuberculosis. WHO, World Health Organization.

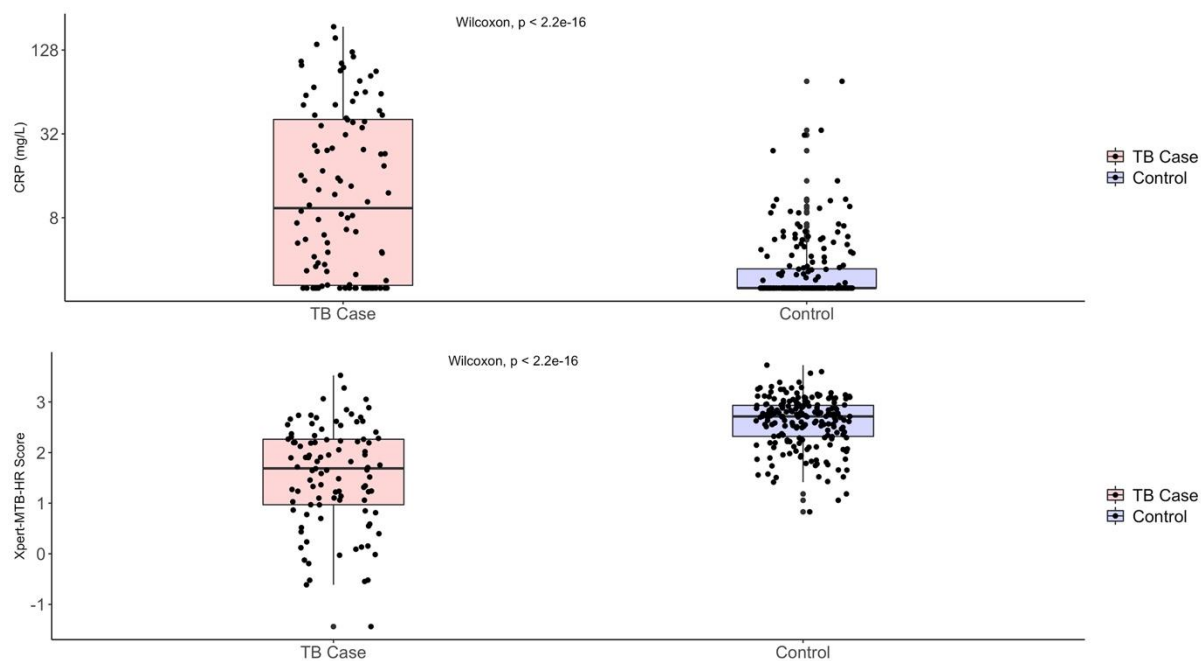
405 **Table 2. Sensitivity of C-reactive protein and Xpert-MTB-HR according to sputum Xpert MTB/RIF G4**
406 **semi-quantitative load and cycle threshold values, using a threshold for specificity of 70%.**

Sputum Xpert G4 result	n	CRP		Xpert-MTB-HR	
		Positive	% Sens. (95% CI)	Positive	% Sens. (95% CI)
Semi-quantitative load					
Negative/Very Low	29	13	44.8 (26.4-64.3)	20	69.0 (49.2-84.7)
Low	28	21	75.0 (55.1-89.3)	22	78.6 (59.0-91.7)
Medium/High	31	28	90.3 (74.2-98.0)	30	96.8 (83.3-99.9)
Cycle threshold					
≥28.0	31	15	48.4 (30.2-66.9)	21	67.7 (48.6-83.3)
<28.0	57	47	82.5 (70.1-91.3)	51	89.5 (78.5-96.0)
All confirmed cases*	100	72	72.0 (62.1-80.5)	82	82.0 (73.1-89.0)

407 CRP, C-reactive protein. CI, confidence interval. *Includes 4 culture-confirmed TB cases in whom Xpert semi-quantitative
408 load was not available and 8 cases confirmed by Xpert Ultra.

409 **Figure 1. Distribution of C-reactive protein concentrations (top) and Xpert MTB-HR scores (bottom)**
410 **among TB cases and controls. CRP: C-reactive protein.**

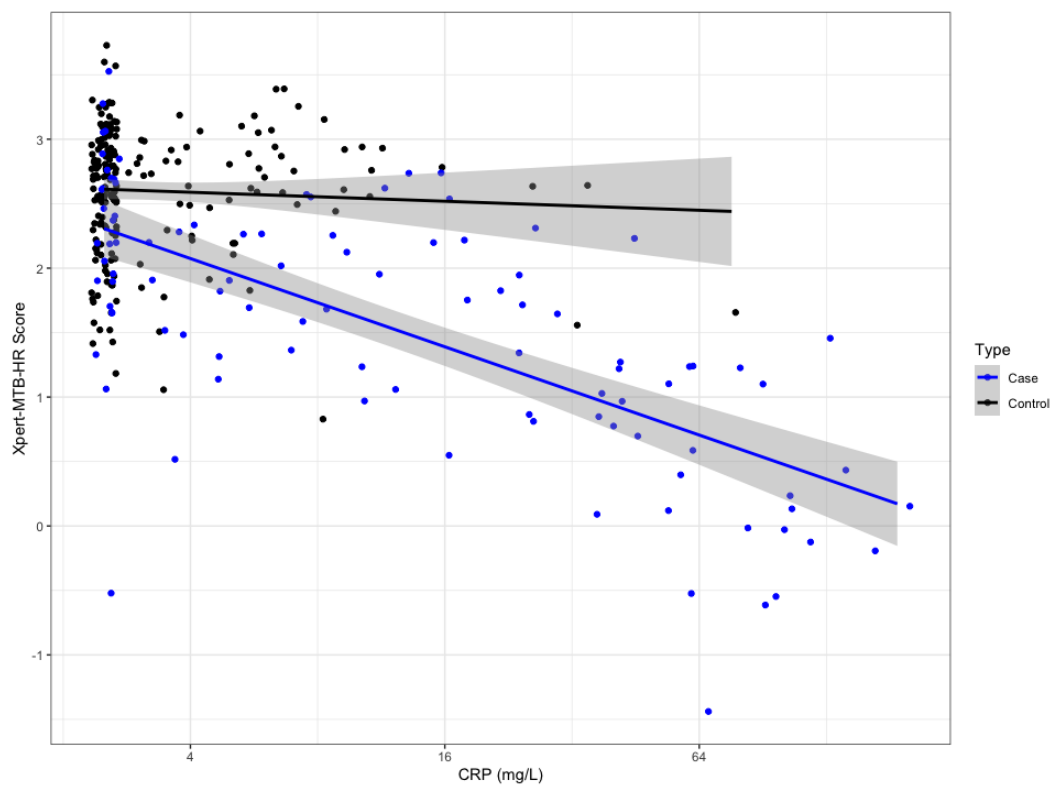
411



412

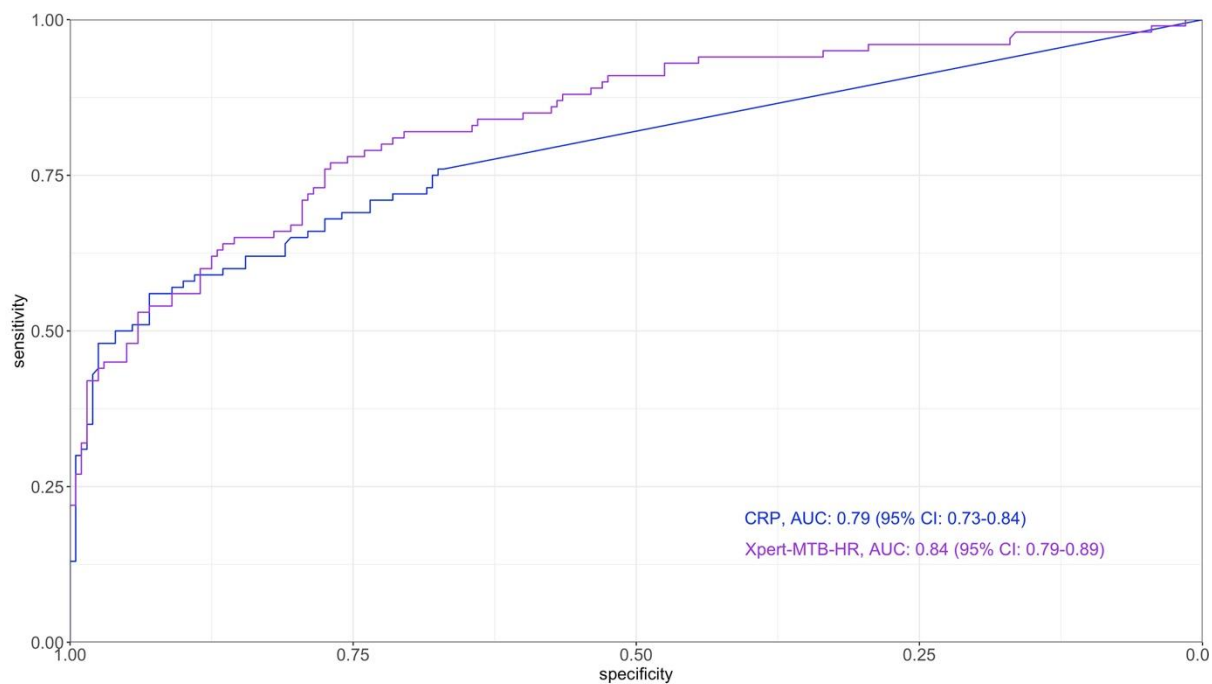
413

414 **Figure 2. Correlation between C-reactive protein concentration and Xpert-MTB-HR Score among TB**
415 **cases and controls, with fitted linear regression lines. CRP: C-reactive protein.**



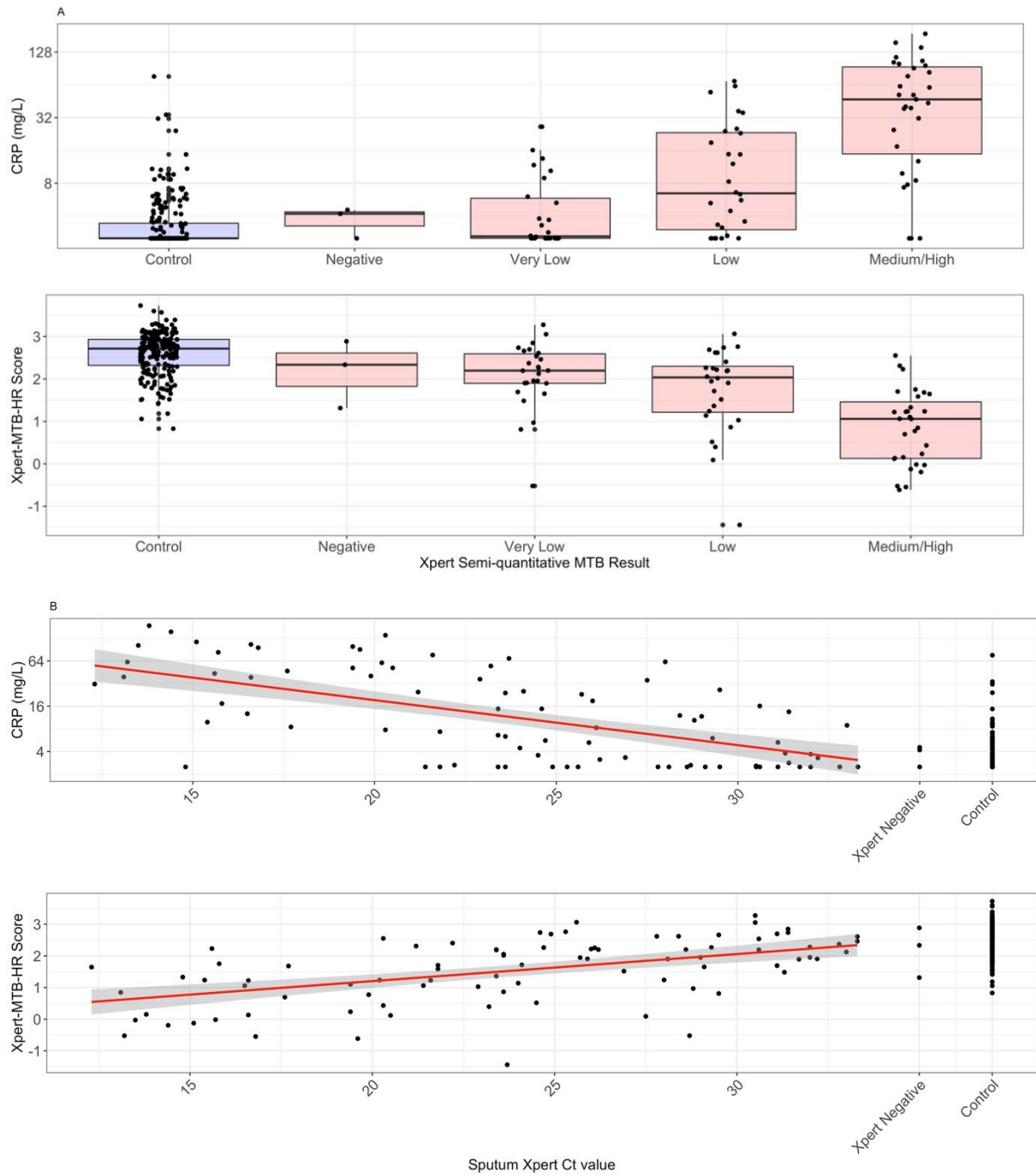
416

417 **Figure 3. Receiver operating characteristic curves for point-of-care C-reactive protein and the Xpert**
418 **MTB-HR assay.** AUC: Area under the curve. CRP: C-reactive protein.



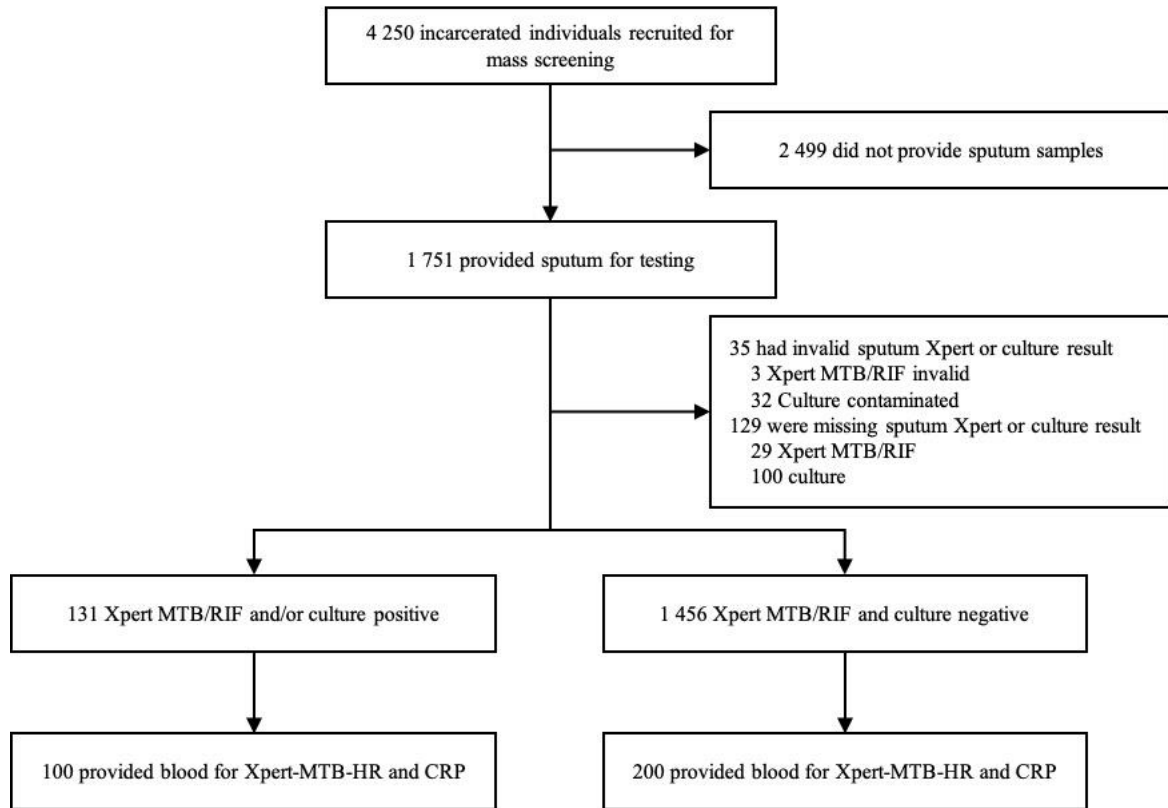
419

420 **Figure 4. C-reactive protein and Xpert MTB-HR scores stratified by sputum Xpert semi-quantitative**
421 **values (a) and cycle thresholds (b). CRP: C-reactive protein.**



422

423 **Appendix Figure A1.** Flow diagram of study participants in mass screening and selection for
424 diagnostic accuracy sub-study.
425



426