

1 **Coronavirus GenBrowser for monitoring the transmission and** 2 **evolution of SARS-CoV-2**

3
4 Dalang Yu^{1,7,†}, Xiao Yang^{1,5,†}, Bixia Tang^{2,†}, Yi-Hsuan Pan^{3,†}, Jianing Yang^{1,7,†}, Junwei
5 Zhu^{2,†}, Guangya Duan^{2,7}, Zi-Qian Hao^{1,7}, Hailong Mu¹, Long Dai^{1,5}, Wangjie Hu^{1,7},
6 Mochen Zhang^{2,7}, Ying Cui^{2,7}, Tong Jin^{2,7}, Cuiping Li², Lina Ma², Language
7 translation team⁶, Xiao Su⁴, Guo-Qing Zhang^{1,7,*}, Wenming Zhao^{2,7,*}, Haipeng Li^{1,7,8,*}

8
9 ^{1,‡}National Genomics Data Center, Bio-Med Big Data Center, CAS Key Laboratory of
10 Computational Biology, Shanghai Institute of Nutrition and Health, Chinese
11 Academy of Sciences, Shanghai 200031, China.

12 ^{2,‡}National Genomics Data Center, Beijing Institute of Genomics (China National
13 Center for Bioinformatics), Chinese Academy of Sciences, Beijing 100101,
14 China.

15 ³Key Laboratory of Brain Functional Genomics of Ministry of Education, School of
16 Life Science, East China Normal University, Shanghai 200062, China.

17 ⁴Institut Pasteur of Shanghai, Chinese Academy of Sciences, Shanghai 200031,
18 China.

19 ⁵Shanghai Shenyou Biotechnology Co. LTD, Shanghai 201315, China.

20 ⁶Beijing Language and Culture University, Beijing 100083, China.

21 ⁷University of Chinese Academy of Sciences, Chinese Academy of Sciences, Beijing
22 100101, China.

23 ⁸Center for Excellence in Animal Evolution and Genetics, Chinese Academy of
24 Sciences, Kunming 650223, China.

25
26 [†]These authors contributed equally.

27 [‡]These institutes contributed equally.

28
29 ***Corresponding authors. Email:** gqzhang@picb.ac.cn; zhaowm@big.ac.cn;
30 lihaipeng@picb.ac.cn

31
32 **Short title:** Coronavirus GenBrowser

33

34 **Abstract:** A large volume of SARS-CoV-2 genomic data has accumulated. To timely
35 analyze and visualize the exponentially increasing viral genomic sequences, we
36 developed the Coronavirus GenBrowser (CGB) based on the framework of distributed
37 genome alignments and the evolutionary tree built on an existing subtree. Among the
38 330,942 high-quality SARS-CoV-2 genomic sequences analyzed, 253,798 mutations
39 were identified, and three prevalent European variants were found to have no
40 mutations in three months. This analysis also revealed a strain dated early March 2020
41 causing an outbreak in Beijing after three months of dormancy. Another strain with
42 S:D614G was found to have 671 identical descendants spreading in six continents
43 between February 2020 and January 2021. Results of this study show that CGB is an
44 efficient platform for monitoring the dynamics of SARS-CoV-2 transmission.

45

46

47 **One Sentence Summary:** CGB enables large-scale analysis of the latest
48 SARS-CoV-2 genomic sequences to timely reveal the dynamics of COVID-19
49 pandemic.

50

51

52 **Main Text:** Severe acute respiratory syndrome coronavirus 2 (SARS-CoV-2)¹⁻³ has
53 infected more than 116 million people, and more than 2.5 million people have died
54 from COVID-19. Several web browsers have been developed to track the COVID-19
55 pandemic. The browser of the Johns Hopkins Coronavirus Resource Center displays
56 global and regional COVID-19 status, including numbers of confirmed cases, deaths,
57 tests, hospitalizations, and vaccinations (<https://coronavirus.jhu.edu/>). The COVID-3D
58 browser, developed by the University of Melbourne, shows the three-dimensional
59 structures of various wild-type and mutant proteins of SARS-CoV-2 based on their
60 nucleotide sequences⁴. The UCSC SARS-CoV-2 Genome Browser is derived from the
61 well-established UCSC genome-browser for visualization of nucleotide and protein
62 sequences, sequence conservations, potential epitopes for production of antibodies,
63 primers for RT-PCR and sequencing, and many other properties of specific parts of
64 wild-type and variants of SARS-CoV-2⁵. The WashU Virus Genome Browser
65 provides Nextstrain-based phylogenetic-tree view and genomic-coordinate,
66 track-based view of genomic features of viruses⁶. It also has many functions similar to
67 those of the UCSC SARS-CoV-2 Genome Browser such as visualization of sequence
68 variations, genomic sites for diagnostic tests, and immunogenic epitopes. In addition, it
69 continuously updates repository of SARS-CoV-2 genomic data.

70
71 Nextstrain is a browser for real-time tracking of pathogen evolution. It hosts tools for
72 phylodynamic analysis of genomic sequences of pathogens of both endemic and
73 pandemic diseases. Nextstrain has allowed analysis of genomic sequences of
74 approximately 4,000 strains of SARS-CoV-2 and investigation of its evolution⁷. As
75 more than 705,000 SARS-CoV-2 genomic sequences have been deposited in public
76 databases, such as National Center for Biotechnology Information (NCBI) GenBank⁸
77 and Global Initiative on Sharing All Influenza Data (GISAID)^{9,10}, analysis of these
78 data has far exceeded the capacity of Nextstrain. New approaches are needed to
79 accomplish this task. Therefore, we developed the Coronavirus GenBrowser (CGB).

80
81 To allow timely analysis of a large number of SAR-CoV-2 genomic sequences, we first
82 solved the problem that all viral genomic sequences have to be re-aligned when
83 nucleotide sequences of new genomes become available. This is extremely time
84 consuming. With the distributed alignment system (Figure 1), we dramatically reduced
85 the total time required for the alignment. We also built the evolutionary tree on the
86 existing tree with new genomic data in order to reduce the complexity of tree
87 construction. With these modifications, hundreds of thousands of SARS-CoV-2
88 genomes can be timely analyzed with data easily shared and visualized (Figure 1).

89

90 For genomic sequence alignments, high quality SARS-CoV-2 genomic sequences were
91 obtained from the 2019nCoV database ^{11,12}, which is an integrated resource based on
92 GenBank, GISAID ^{9,10}, China National GeneBank DataBase (CNCBdb) ¹³, the
93 Genome Warehouse (GWH) ¹⁴, and the National Microbiology Data Center (NMDC,
94 <https://nmdc.cn/>). The sequences were aligned ¹⁵ to that of the reference genome ³ and
95 presented as distributed alignments. Genomic sequences of bat coronavirus RaTG13 ¹⁶,
96 pangolin coronavirus PCoV-GX-P1E ¹⁷, and SARS-CoV-2 strains collected before
97 January 31, 2020 were jointly used to identify ancestral alleles of SARS-CoV-2.
98 Mutations in strains of each branch of the evolutionary tree were indicated according
99 to the principle of parsimony ¹⁸. A highly effective maximum-likelihood method
100 (TreeTime) ¹⁹ was used to determine the dates of internal nodes with very minor
101 revisions.

102

103 In total, 330,942 high quality SARS-CoV-2 genomic sequences were analyzed, and
104 253,798 (recurrent) mutations were identified. With sliding window analysis, 971
105 mutation cold spots were found with a false discovery rate (FDR) corrected *P*-value
106 < 0.01 (Figure S5, Supplemental excel file). The coldest spot is located in ORF1a,
107 which encodes nsp3 phosphoesterase (nucleotides 7,394 – 7,419) (FDR corrected
108 P -value = 4.28×10^{-29}). These mutation cold spots may be key functional elements
109 of SARS-CoV-2 and can potentially be used for vaccine development and targets for
110 detection.

111

112 The genome-wide mutation rate of coronaviruses has been determined to be 10^{-4} –
113 10^{-2} per nucleotide per year ²⁰. As this range of mutation rate is too wide, we decided
114 to estimate more precisely the genome-wide mutation rate (μ) of SARS-CoV-2 and
115 determined that $\mu = 6.8017 \times 10^{-4}$ per nucleotide per year (95% confidence interval:
116 5.4262 to 8.2721×10^{-4}). The estimated μ was lower than that of other
117 coronaviruses, such as SARS-CoV (0.80 to 2.38×10^{-3} per nucleotide per year) ²⁰
118 and MERS-CoV (1.12×10^{-3} per nucleotide per year) ²¹. It was slightly lower than
119 that determined by other investigators (9.90×10^{-4} per nucleotide per year) ²².

120 Various mutation rates were found in different regions of the SARS-CoV-2 genome.
121 The mutation rate of each gene is shown in Table S1.

122

123 Similar to Nextstrain ⁷, the pre-analyzed genomic data of SARS-CoV-2 variants and
124 the associated metadata on CGB are shared with the general public. The size of
125 distributed alignments is 9,498 Mb for the high-quality 330,942 SARS-CoV-2 genomic

126 sequences. The tree-based data format allows the compression ratio to reach 2,499:1,
127 meaning that the size of compressed core file containing pre-analyzed genomic data
128 and associated metadata is as small as 3.80 Mb (Figure 1). This approach ensures
129 low-latency access to the data and enables fast sharing and re-analysis of a large
130 number of SARS-CoV-2 genomic variants.

131

132 To visualize, search, and filter the results of genomic analysis, both desktop standalone
133 and web-based user-interface of CGB were developed. Similar to the UCSC
134 SARS-CoV-2 Genome Browser⁵ and the WashU Virus Genome Browser⁶, six
135 genomic-coordinate annotated tracks were developed to show genome structure and
136 key domains, allele frequencies, sequence similarity, multi-coronavirus genome
137 alignment, and primer sets for detection of various SARS-CoV-2 strains (Figure S11).
138 To efficiently visualize the results of genomic analysis, movie-making ability was
139 implemented for painting the evolutionary tree, and only elements shown on the screen
140 and visible to the user would be painted. This design makes the visualization process
141 highly efficient, and the evolutionary tree of more than one million strains can be
142 visualized simultaneously.

143

144 CGB detects on-going positive selection based on S-shaped frequency trajectory of a
145 selected allele (Figures S18, S19). It has been shown that the SARS-CoV-2 variant
146 with G614 spike protein has a fitness advantage²³. Our analysis using CGB confirmed
147 this finding even when the G614 frequency was very low (< 10%) (Figure 2),
148 indicating that CGB can detect putative advantageous variants before they become
149 widely spread. GCB also predicted an increase in the frequency of S:HV69- deletion
150 of the B.1.1.7 lineage²⁴ (Figure 2), suggesting that variants with the deletion may be
151 advantageous. As an increase in mutation frequency could be due to sampling bias
152 and epidemiological factors²³, putative advantageous variants should be closely
153 monitored.

154

155 Using CGB, we analyzed branch-specific accelerated evolution of SARS-CoV-2 and
156 found that 246 internal branches of the evolutionary tree (FDR corrected $P < 0.05$,
157 Supplemental excel file) had significantly more mutations. All evolution-accelerated
158 variants were not found to spread significantly faster than other variants during the
159 same period of time as the majority ($168/225 = 74.6\%$) of these variants had
160 relatively fewer descendants. This observation suggests that these variants are not
161 highly contagious. It is likely that these evolution-accelerated variants were evolved
162 neutrally instead of adaptively.

163
164 CGB is also an efficient platform to investigate local and global transmission of
165 COVID-19 (Figure 3). There was an outbreak in Qingdao, China²⁵ after two dock
166 workers were found to have asymptomatic infections on September 24, 2020. CGB
167 lineage tracing revealed that the sequence of a sample collected from the outer
168 packaging of cold-chain products is identical to that of the most recent common
169 ancestor of the two strains isolated from the two dock workers (Figure 3B), suggesting
170 that infection of these two individuals was cold-chain related.
171
172 CGB lineage tracing also revealed the difficulty in controlling COVID-19 pandemic.
173 There was an outbreak in Xinfadi, Beijing, China^{26,27}. The sequences of two isolates
174 (Beijing/IVDC-02-06 and Beijing/BJ0617-01-Y), collected from two Xinfadi cases on
175 June 11 and 14, 2020, were found to be identical to the sequence of the variant
176 (CGB4268.5142) (Figure 3C) dated March 6, 2020 (95% CI: February 28 – March 17,
177 2020). This variant was found to spread to Taiwan, India, Czech Republic, England,
178 Denmark, and Colombia and caused the outbreak in Beijing three months later. It was
179 also detected in the United States (NY-Wadsworth-21013812-01/2020) on December
180 18, 2020. These two Xinfadi strains were found to evolve significantly slowly
181 ($P = 0.0043$ and 0.0051 , respectively) because no mutations were detected between
182 March and June 2020, consistent with the hypothesis of cold-chain related
183 transmission²⁷.
184
185 CGB is a powerful tool for identification of global and regional transmission of
186 mutation-dormant strains as it can determine whether the mutation rate of a specific
187 strain is significantly lower than the average mutation rate of the entire set of strains.
188 This lineage-specific reduced mutation rate could be due to a long period of dormancy
189 caused by the yet to be confirmed cold-chain preservation or other reasons. Among the
190 330,942 SARS-CoV-2 strains, 7,534 strains were found to evolve significantly slowly
191 (FDR corrected $P = 9.68 \times 10^{-9} \sim 0.04$, Supplemental excel file) and did not mutate
192 in 100 days. In addition, three closely related variants were found to have no
193 mutations in 3 months before their descendants were found to widely spread in
194 Europe in late July 2020 (Figure 4A). Another variant with C3037T, A23403G
195 (S:D614G), C14408T (ORF1b:P314L), and C241T, emerged in early December 2019.
196 This variant had 671 identical descendants spreading in six continents between
197 February 2020 and January 2021, indicating that it has no additional mutations in one
198 year (Figure 4B). The most ($582/671 = 86.7\%$) of the descendants were found in
199 Europe and North America. These results (Figures 3 and 4) suggest that the

200 transmission of mutation-dormant variants also plays a major role in COVID-19
201 pandemic.

202

203 All timely-updated data are freely available at <https://bigd.big.ac.cn/ncov/apis/>. The
204 desktop standalone version (Figure S10A) provides the full function of CGB and has a
205 plug-in module for the eGPS software (<http://www.egps-software.net/>)²⁸. Although the
206 web-based CGB is a simplified version (<https://www.biosino.org/genbrowser/> and
207 <https://bigd.big.ac.cn/genbrowser/>) and designed mainly for educational purpose, it
208 provides a convenient way to access the data via a web browser, such as Google
209 Chrome, Firefox, and Safari (Figure S10B, C). The web-based CGB package can be
210 downloaded and reinstalled on any websites. Nine language versions (Chinese, English,
211 German, Japanese, French, Italian, Portuguese, Russian, and Spanish) are available.

212

213

214 **References**

- 215 1. Zhu, N. *et al.* A novel coronavirus from patients with pneumonia in China, 2019. *N Engl J*
216 *Med* **382**, 727-733 (2020).
- 217 2. Lu, R. *et al.* Genomic characterisation and epidemiology of 2019 novel coronavirus:
218 implications for virus origins and receptor binding. *Lancet* **395**, 565-574 (2020).
- 219 3. Wu, F. *et al.* A new coronavirus associated with human respiratory disease in China. *Nature*
220 **579**, 265-269 (2020).
- 221 4. Portelli, S. *et al.* Exploring the structural distribution of genetic variation in SARS-CoV-2 with
222 the COVID-3D online resource. *Nat Genet* **52**, 999-1001 (2020).
- 223 5. Fernandes, J.D. *et al.* The UCSC SARS-CoV-2 Genome Browser. *Nat Genet* **52**, 986-991
224 (2020).
- 225 6. Flynn, J.A. *et al.* Exploring the coronavirus pandemic with the WashU Virus Genome Browser.
226 *Nat Genet* **52**, 986-1001 (2020).
- 227 7. Hadfield, J. *et al.* Nextstrain: real-time tracking of pathogen evolution. *Bioinformatics* **34**,
228 4121-4123 (2018).
- 229 8. Sayers, E.W. *et al.* Database resources of the National Center for Biotechnology Information.
230 *Nucleic Acids Res* **49**, D10-D17 (2021).
- 231 9. Shu, Y.L. & McCauley, J. GISAID: Global initiative on sharing all influenza data - from
232 vision to reality. *Eurosurveillance* **22**, 2-4 (2017).
- 233 10. Elbe, S. & Buckland-Merrett, G. Data, disease and diplomacy: GISAID's innovative
234 contribution to global health. *Glob Chall* **1**, 33-46 (2017).
- 235 11. Zhao, W.-M. *et al.* The 2019 novel coronavirus resource. *Hereditas (Beijing)* **42**, 212-221
236 (2020).

- 237 12. Gong, Z. *et al.* An online coronavirus analysis platform from the National Genomics Data
238 Center. *Zool Res* **41**, 705-708 (2020).
- 239 13. Chen, F. *et al.* CNGBdb: China National GeneBank DataBase. *Hereditas (Beijing)* **42**,
240 799-809 (2020).
- 241 14. Zhang, Z. *et al.* Database resources of the National Genomics Data Center in 2020. *Nucleic
242 Acids Res* **48**, D24-D33 (2020).
- 243 15. Katoh, K. & Standley, D.M. MAFFT multiple sequence alignment software version 7:
244 Improvements in performance and usability. *Mol Biol Evol* **30**, 772-780 (2013).
- 245 16. Zhou, P. *et al.* A pneumonia outbreak associated with a new coronavirus of probable bat origin.
246 *Nature* **579**, 270-273 (2020).
- 247 17. Lam, T.T.-Y. *et al.* Identifying SARS-CoV-2-related coronaviruses in Malayan pangolins.
248 *Nature* **583**, 282-285 (2020).
- 249 18. Hartigan, J.A. Minimum mutation fits to a given tree. *Biometrics* **29**, 53-65 (1973).
- 250 19. Sagulenko, P., Puller, V. & Neher, R.A. TreeTime: Maximum-likelihood phylodynamic
251 analysis. *Virus Evol* **4**, vex042 (2018).
- 252 20. Zhao, Z.M. *et al.* Moderate mutation rate in the SARS coronavirus genome and its
253 implications. *BMC Evol Biol* **4**, 21 (2004).
- 254 21. Cotten, M. *et al.* Spread, circulation, and evolution of the Middle East respiratory syndrome
255 coronavirus. *Mbio* **5**, e01062-13 (2014).
- 256 22. Nie, Q. *et al.* Phylogenetic and phylodynamic analyses of SARS-CoV-2. *Virus Res* **287**,
257 198098 (2020).
- 258 23. Korber, B. *et al.* Tracking changes in SARS-CoV-2 Spike: Evidence that D614G increases
259 infectivity of the COVID-19 virus. *Cell* **182**, 812-827 (2020).
- 260 24. Rambaut, A. *et al.* Preliminary genomic characterisation of an emergent SARS-CoV-2 lineage
261 in the UK defined by a novel set of spike mutations. *virological.org*,
262 [https://virological.org/t/preliminary-genomic-characterisation-of-an-emergent-sars-cov-2-linea
263 ge-in-the-uk-defined-by-a-novel-set-of-spike-mutations/563](https://virological.org/t/preliminary-genomic-characterisation-of-an-emergent-sars-cov-2-lineage-in-the-uk-defined-by-a-novel-set-of-spike-mutations/563) (2020).
- 264 25. Xing, Y., Wong, G.W.K., Ni, W., Hu, X. & Xing, Q. Rapid response to an outbreak in Qingdao,
265 China. *N Engl J Med* **383**, e129 (2020).
- 266 26. Zhang, Y. *et al.* Genomic characterization of SARS-CoV-2 identified in a reemerging
267 COVID-19 outbreak in Beijing's Xinfadi market in 2020. *Biosaf Health* **2**, 202-205 (2020).
- 268 27. Pang, X. *et al.* Cold-chain food contamination as the possible origin of Covid-19 resurgence in
269 Beijing. *Natl Sci Rev* **7**, 1861-1864 (2020).
- 270 28. Yu, D. *et al.* eGPS 1.0: comprehensive software for multi-omic and evolutionary analyses.
271 *Natl Sci Rev* **6**, 867-869 (2019).

272

273

274 **Acknowledgments**

275 We thank Ya-Ping Zhang for providing valuable advices and encouragement and the
276 researchers who generated and deposited sequence data of SARS-CoV-2 in GISAID,
277 GenBank, CNGBdb, GWH, and NMDC making this study possible. This work was
278 supported by a grant from the National Key Research and Development Project (No.
279 2020YFC0847000).

280

281 **Members of the language translation team**

282 German: Ning He⁶, Jing Lv⁶, Ting Peng⁶

283 Italian: Ting Zhou⁶, Nan Yang⁶, Siyi Hou⁶

284 Portuguese: Huang Li⁶, Jingxuan Yan⁶, Chenglin Zhu⁶, Wenjing Liu⁶

285 Russian: Yuhong Guan⁶, Huanxiao Song⁶

286 Spanish: Qin Zhou⁶, Han Gao⁶, Jinglan He⁶, Tiantian Li⁶, Ruiwen Fei⁶, Shumei Zhang⁶

287 French: Yuyuan Guo⁶

288

289 **Author contributions:** YHP, GQZ, WZ, and HL designed the study; DY, XY, BT,
290 YHP, JY, JZ, GD, ZQH, HM, LD, GQZ, WZ, and HL wrote the code and developed
291 CGB; DY, XY, BT, YHP, JY, JZ, GD, ZQH, WH, XS, GQZ, WZ, and HL acquired,
292 analyzed, and interpreted the data; LM, MZ, YC, GD, TJ, and CL integrated and
293 curated the source data; members of the language translation team translated CGB
294 into multiple languages; DY, YHP, JY, JZ, GQZ, WZ, and HL wrote the manuscript.
295 All authors have approved the submitted version.

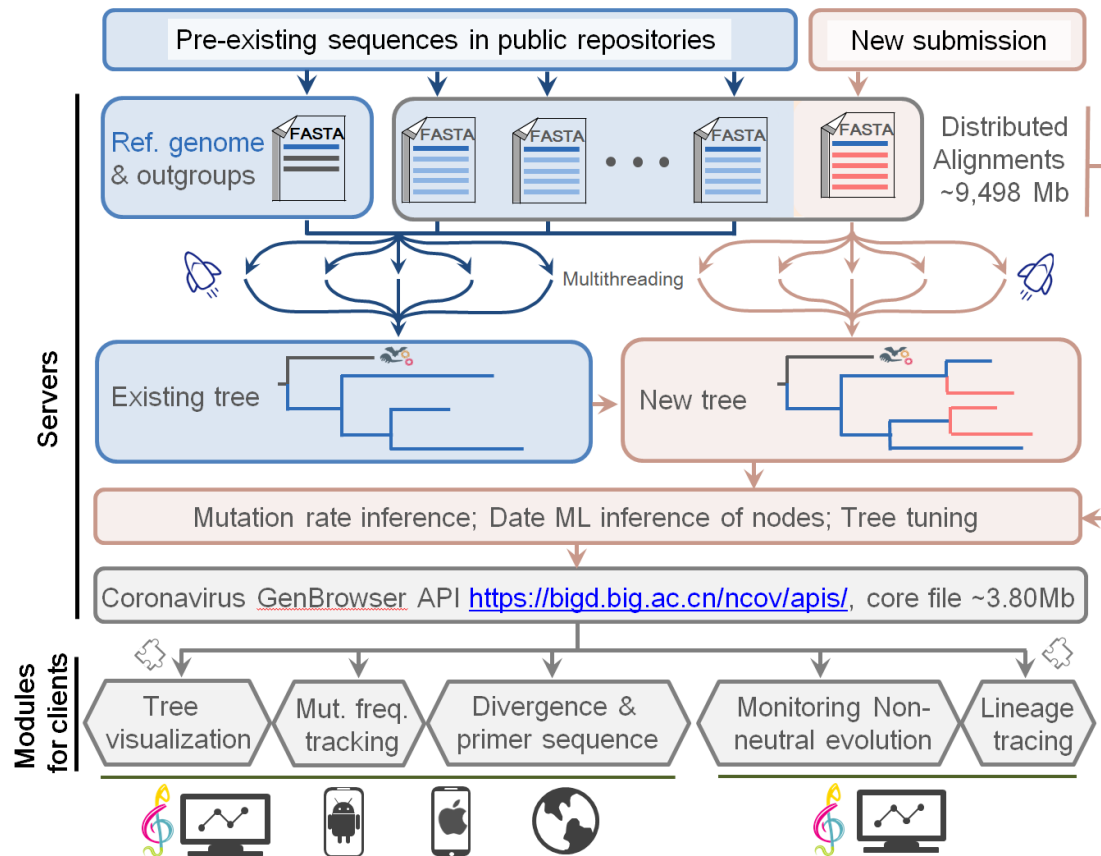
296

297 **Competing interests:** The authors declare no competing interests.

298

299 **Data and materials availability:** The coronavirus genomic sequences used in this
300 study were obtained from the 2019nCoV database¹¹. Timely updated data of genomic
301 sequences of SARS-CoV-2 variants are shared with the general public at
302 <https://bigd.big.ac.cn/ncov/apis/>. The free software (desktop and web-based versions)
303 can be downloaded from <http://www.egps-software.net/>.

304



305

306

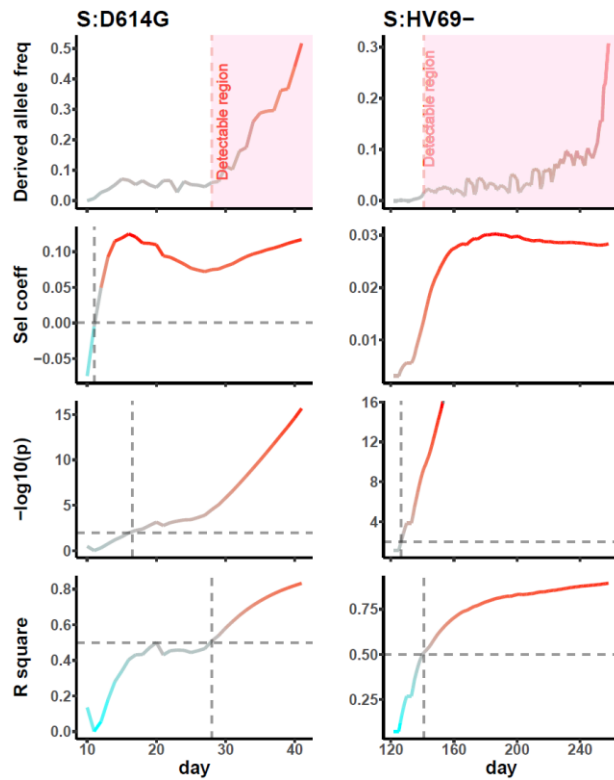
307 **Figure 1. Timely updates of SARS-CoV-2 genomic data and visualization**

308 **framework of Coronavirus GenBrowser.** The core file includes the pre-analyzed

309 genomic data of SARS-CoV-2 variants and the associated metadata. All

310 timely-updated data can be freely accessed at <https://bigd.big.ac.cn/ncov/apis/>.

311

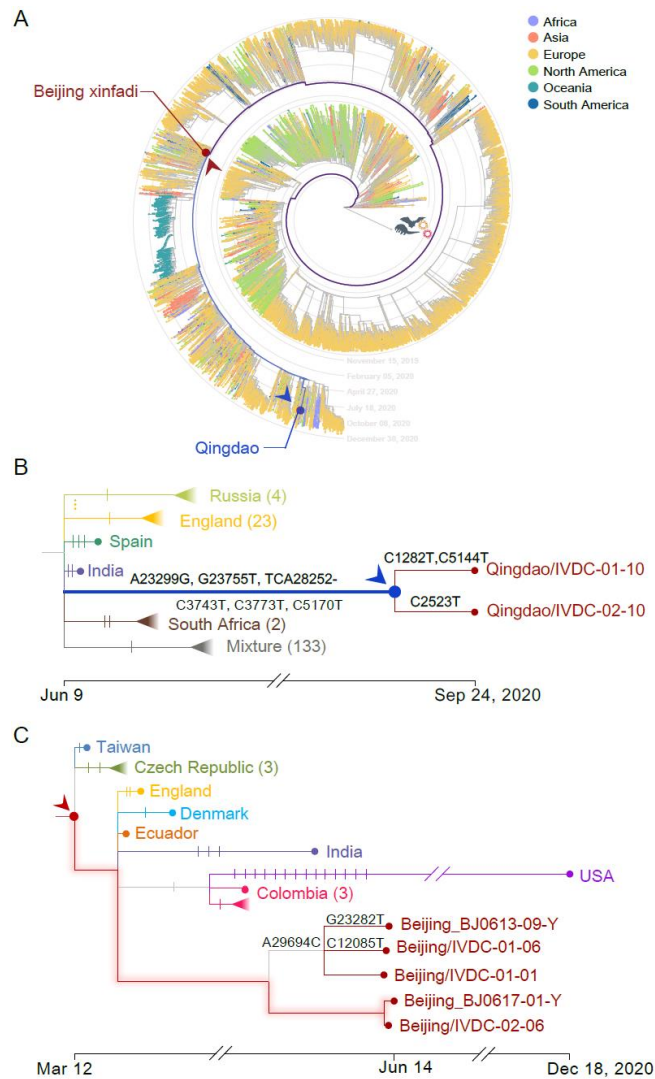


312

313

314 **Figure 2. Putative advantageous variants of SARS-CoV-2.** The x -axis displays
315 number of days since the first appearance of derived allele in the global viral population.
316 Predicted adaptation is marked in pink. Dashed gray crossings denote top right corners
317 with a positive selection coefficient, $p < 0.01$, and $R^2 > 50\%$.

318



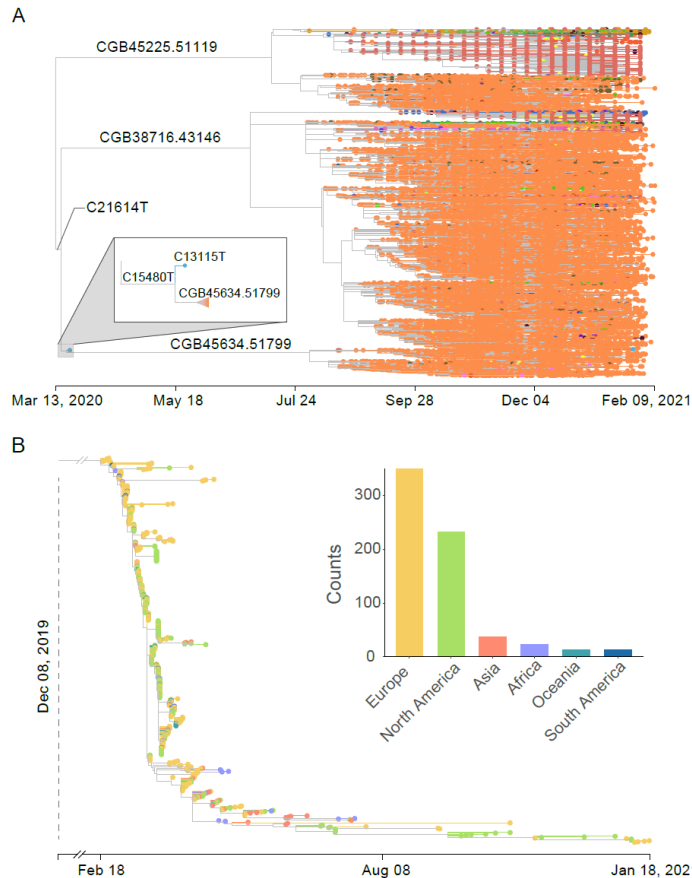
319

320 **Figure 3. Global and zoom-in views of lineages associated with Qingdao and**
 321 **Beijing outbreaks.**

322 A) The lineages of traced targets are shown in blue and dark red lines.

323 B) Qingdao/IVDC-01-10 and Qingdao/IVDC-02-10 were the two SARS-CoV-2
 324 strains collected on September 24, 2020 from two dock workers in Qingdao,
 325 China. The query strain (env/Qingdao/IVDC-011-10) was found on an outer
 326 packaging of cold-chain products on October 7, 2020. The environmental strain,
 327 marked with a blue solid circle with an arrowhead, was found to be identical to the
 328 most recent common ancestor of the two strains from the two dock workers. Each
 329 notch of the branches represents a mutation. Mutations of the Qingdao strains are
 330 indicated.

331 C) The ancestral viral strain found in early March 2020 is marked with a dark-red
 332 solid circle and an arrowhead. This strain is identical to the two strains
 333 (Beijing/IVDC-02-06 and Beijing/BJ0617-01-Y) collected from two Xinfadi cases
 334 on June 11 and 14, 2020. The branches with no mutations are highlighted.



335

336 **Figure 4. Transmission of mutation-dormant SARS-CoV-2 variants.**

337 A) Tree visualization of strains of three related lineages with ~~the~~ reduced evolutionary
 338 rate among 330,942 SARS-CoV-2 genomic sequences. There were no mutations in
 339 the strains of three long branches (CGB45225.51119, CGB38716.43146, and
 340 CGB45634.51799) in 118, 112, and 135 days, respectively. The numbers of their
 341 descendants were 9,815, 28,126, and 3,015, respectively. The three strains had
 342 spread to more than 10 European countries, and most descendants were found in
 343 Denmark (red tip) and UK (orange tip). Variants of these three lineages shared 13
 344 mutations (G204T, C241T, T445C, C3037T, C6286T, C14408T, G21255C,
 345 C22227T, A23403G, C26801G, C27944T, C28932T, and G29645T) but had two
 346 unique mutations (C21614T and C15480T).

347 B) Tree visualization of 671 strains with no mutations between December 8, 2019 and
 348 January 18, 2021. These strains are the descendants of a variant with four
 349 mutations (C3037T, A23403G, C14408T, and C241T) emerged before December
 350 8, 2019. Among the four mutations, A23403G (S:D614G) and C14408T
 351 (ORF1b:P314L) are non-synonymous. The geographic distribution of the
 352 descendants is shown in the subpanel. Their siblings with additional mutations
 353 (16,442 strains) are not shown in the evolutionary tree. The CGB ID of their
 354 MRCA is CGB121.124.