

Title page: Conservative treatment of partial-thickness rotator cuff tears and tendinopathy with platelet-rich plasma: a systematic review and meta-analysis

Running Title: Platelet-Rich Plasma and Rotator Cuff Disease

Author information: Xiao-Na Xiang^{1,2,3,†}, MS, Jie Deng^{1,†}, MD, Yan Liu¹, MD, Xi Yu^{1,2}, PhD, Biao Cheng⁴, PhD, Hong-Chen He^{1,2,3,*}, PhD

Affiliation

1. Department of Rehabilitation Medicine, West China Hospital, Sichuan University, Chengdu, 610041, P. R. China
2. School of Rehabilitation Sciences, West China School of Medicine, Sichuan University, Chengdu, 610041, P. R. China
3. Rehabilitation Medicine Key Laboratory of Sichuan Province, Chengdu, 610041, P. R. China
4. Department of Burn & plastic Surgery, General Hospital of Southern Theatre Command, PLA, Guangzhou, 510010, P. R. China

* Corresponding author, E-mail: hxfhlc@126.com, [Tel: 028-18980602262](tel:028-18980602262)

† These authors contributed equally to this manuscript

Abstract

Purpose: To assess the effect of platelet-rich plasma (PRP) as a conservative therapy on individuals with partial-thickness rotator cuff tears (PTRCs) or tendinopathy in terms of pain, and function.

Methods: A systematic review and meta-analysis of randomized controlled trials were conducted. Short-term (6±1 months) and long-term (≥1 year) outcomes were analysed, including the visual analogue scale (VAS), Constant-Murley score (CMS), Shoulder Pain and Disability Index (SPADI), as well as American Shoulder and Elbow Surgeons (ASES) score. The weighted mean difference (MD) with 95% confidence interval (CI) was used.

Results: Ten studies were eligible in this review, nine studies with 561 patients were

NOT: This preprint reports new research that has not been certified by peer review and should not be used to guide clinical practice.

included in this meta-analysis. The meta-analysis showed statistically significant differences in the decrease in short-term VAS (MD=-1.56; 95% CI -2.82 to -0.30), and increase in CMS (MD=16.48; 95% CI 12.57 to 20.40), and SPADI (MD=-18.78 95% CI -36.55 to -1.02). Nonetheless, no long-term effect was observed on pain and function, except CMS (MD=24.30). The results of mean important differences (MIDs) reached the minimal clinically important differences, except ASES. For subgroup analysis, short-term VAS scores were decreased in PRP-treated patients with double centrifugation (MD=-1.99), single injection (MD=-0.71) and post-injection rehabilitation (MD=-1.59).

Conclusion: PRP-treated patients with PTRCs and rotator cuff tendinopathy demonstrated improvements in pain and function, although the effect may not last for a long time. Overall, our results suggest that PRP may have positive clinical outcomes, but limited data, and study heterogeneity hinder firm conclusions.

Keywords

Platelet-rich plasma; Rotator cuff; Tendinosis; Partial-thickness rotator cuff tears; Systematic review and meta-analysis

1. Introduction

Partial-thickness rotator cuff tears (PTRCs) and rotator cuff tendinopathy commonly affected overhead athletes,¹ such as handball players² and pitchers,³ which leads to sport performance decline. Rotator cuff tendinopathy, as an overuse disorder,⁴ is the most common cause of shoulder pain,⁵ which has been associated with an increased risk for rotator cuff tears.⁶ Although PTRCs may cause minimal symptoms instantly,⁷ concomitant pathologic physical condition such as scapula instability, dyskinesia, or tightness may cause pain and muscle weakness.⁸ PTRCs and tendinopathy are initially treated conservatively⁹ with sodium hyaluronate¹⁰ and corticosteroid,¹¹ saline, lidocaine, and physiotherapy,¹² etc. Additionally, the limited ability of the tendon to heal has led to increased interest in platelet-rich plasma (PRP).

PRP is an autologous product, which is separated from the fresh whole blood after centrifugation.^{13, 14} It contains numerous growth factors (such as platelet-derived

growth factor AB, transforming growth factor β -1, and vascular endothelial growth factor) which promote tissue repair.¹⁵ However, the clinical effect of PRP is numerous, due to its difference in component, biologic characteristic, post-injection rehabilitation, and PRP preparation, especially the inconsistent PRP parameters (preparation kit, platelet concentration and the presence of cells, etc).

Recently, numerous studies have researched the healing effect of PRP injection in rotator cuff disease. A systematic review of rotator cuff disease has reported that PRP injections may not be beneficial at short-term follow-up.¹⁶ Moreover, in the latest guideline by the American Academy of Orthopaedic Surgeons (AAOS),¹⁷ the routine use of PRP in the non-operative management of PTRCs is not recommended by limited quality and number of evidences. Nonetheless, several trials have reported the positive effects of PRP injection for PTRCs or rotator cuff tendinopathy,^{18, 19} while no meta-analysis study yet. To our' knowledge, this is the first meta-analysis study of randomized controlled clinical trials aiming at the effectiveness of PRP in PTRCs and rotator cuff tendinopathy. Furthermore, the minimal clinically important differences (MCIDs) are important considerations in making clinical conclusion and are discussed in this study.^{20, 21}

2. Materials and Methods

The review protocol was registered with PROSPERO (CRD42020165330) and was performed according to the PRISMA recommendations (Preferred Reporting Items for Systematic Reviews and Meta-analyses).²²

2.1 Search Strategy

Electronic databases were searched from inception to September 2020 for randomized controlled trials (RCTs) that involved Embase (via OVID platform), MEDLINE (via OVID platform), CENTRAL (via the Cochrane Library), Web of Science, CINAHL (via EBSCOhost) and the Physiotherapy Evidence Database. Two authors (X.N.X. and J.D.) independently performed the initial screening and study selection. Any disagreements were resolved by a discussion under the guidance of a third reviewer (Y.L.). The key search terms included “rotator cuff injuries”, “rotator

cuff tendinopathy”, “PRP or platelet rich plasma”, “randomized controlled trial” and “human”. We developed a search strategy via OvidSP based on the aforementioned. The full search strategy is listed in Supplementary Material. The specialist register GreyNet ([http:// www.greynet.org/](http://www.greynet.org/)) for grey literature was also searched. The reference lists of potentially relevant articles were also hand-searched.

2.2 Study selection and inclusion criteria

The inclusion criteria were as follows: (1) patients diagnosed with PTRCs or rotator cuff tendinopathy by MRI or ultrasound over 2 months; (2) patients aged 18 years or older; (3) patients in the intervention group received PRP; (4) quantifiable outcomes were reported; (5) RCT design. Exclusion criteria were as followed: (1) patients diagnosed with full-thickness rotator cuff tears, rheumatoid arthritis, adhesive capsulitis, calcific rotator disease; (2) patients had a history of rotator cuff repair or injection; (3) case reports, letters, comments, trial protocols, editorials, reviews or practice guidelines; (4) studies were not written in English.

2.3 Data extraction and analysis

Outcome measures: the primary outcome was pain assessed by visual analogue scale (VAS) score; the secondary outcome was function that consisted of the Constant-Murley Score (CMS), Disabilities of the Arm, Shoulder Pain and Disability Index (SPADI), and American Shoulder and Elbow Surgeons (ASES).

Two independent authors (X.N.X. and J.D.) extracted data with standardized data forms. The following data were extracted: first author’s name, publication year, percentage of female patients, mean age, outcome measurements, details of PRP treatment and duration of follow-up. The means and standard deviations (SD) of continuous outcomes were recorded. All other data were recorded as median with corresponding. The VAS score (reported on 0 -100 scales) was converted into 0-10 scales. The results of the VAS score, CMS, SPADI, and ASES were extracted and categorized as follows: baseline, short-term (6±1 months) follow-up, and long-term (≥1-year) follow-up. The data of diagram was extracted by Engauge Digitizer (version 3.0), if no original data available in the study. If SDs were missing for continuous data, other statistics (for example: 95% confidence interval, standard errors, *T* values, *F*

values, and P values) were used for the calculation of standard deviation via the calculator tool from Review Manager, version 5.3 (Nordic Cochrane Centre, Cochrane Collaboration). Disagreements between the two reviewers were resolved by consensus, and if necessary, by consultation with a third reviewer (Y.L.).

Data analysis was performed with Review Manager. A P value $<.05$ was considered statistically significant. For the continuous variable, the weighted mean difference (MD) with 95% confidence interval (CI) was used. the unit of measurement was the same across studies for the specified outcomes and the MD was not standardized. Heterogeneity was assessed using Cochrane Q statistic (significance level at P value $<.05$) and quantified with I^2 (significance level at $I^2 > 50\%$).^{23, 24} Random effects were used if the Q or I^2 value was statistically significant or a small number of studies was analysed. Otherwise, fixed effects were used. A sensitivity analysis was performed for primary and secondary outcomes by excluding studies with high risk of bias²⁵. The subgroup analysis was reported based on several variables of interest (PRP centrifugation approach, number of injections, and the existence of post-injection rehabilitation).

According to previous studies the values of MCID were reported as 1.0 (VAS),²⁶ 5.5(CMS), 14.88 (SPADI), and 11.1 (ASES),^{27, 28} respectively. In this study, the minimal important differences (MIDs) between two groups calculated by anchor-based methods²⁹ were compared with those MCIDs. Therefore, clinical improvements were deemed meaningful when the MIDs calculated were beyond MCIDs.

2.4 Assessment of risk of bias in include studies

To assess bias with the Cochrane Collaboration's risk of bias tool, two reviewers (X.N.X. and J.D.) independently assessed each of following domains: selection bias, performance bias, detection bias, attrition bias, reporting bias and other sources of bias. Each component was recorded as low, unclear, or high risk of bias. Studies were considered as low risk of bias only when a "+" was recorded for all items; a high risk of bias was considered if studies scored "-" or "?" more than two items. Others were scored as moderate risk of bias.^{30, 31} Any disagreements were resolved through discussion or by referral to a third author (Y.L.).

3. Results

3.1 Study characteristics

Studies retrieved and excluded in each screening phase appear in Figure 1. A total of ten (601 patients) level 1 studies^{5, 32-40} was deemed eligible for systematic review and 9 studies (561 patients) were included in the meta-analysis. One study did not include the primary outcome and was removed.³⁹ The mean age of the included participants was 49 years (range, 40-64 years); 55% of the participants were female. One study³⁷ was extracted from figure to number via Engauge Digitizer.

PRP treatment characteristics varied widely among the included studies, though all injections were under ultrasound guidance. For example, PRP parameters included the preparation kit used in five trials,^{5, 33, 38-40} the presence of leukocyte in three trials,³³⁻³⁵ platelet concentration in three trials^{5, 32, 34} and activation agents in seven trials.^{5, 32-37} After injection, seven studies followed standard rehabilitation programs for rotator cuff tendinopathy or partial-thickness tear.^{5, 32, 33, 37-40} Two RCTs^{33, 34} avoided medicine and physical therapy for several months after injections. Included study characteristics are provided in Table 1.

3.2 Risk of bias in included studies

The results of the risk of bias assessment are presented in Figure 2. Among the ten studies, six studies were deemed to be at high risk of bias,^{34-37, 39, 40} two trials were deemed to be at low risk of bias,^{5, 33} and the remaining two studies were be at moderate risk.^{32, 38} Selection bias was the most common source of bias across the included studies. Adequate random sequence generation was reported in seven studies.^{5, 32-34, 38-40} Details of allocation concealment was reported in four studies.^{5, 33, 37, 38} Participants and personnel were blinded in five studies;^{5, 32, 33, 38, 40} and the blinding of outcome assessment was performed in seven studies.^{5, 32-34, 36, 38, 40} For attrition bias, a total of four studies had no description about incomplete outcome data, especially about reasons and statistical analysis for loss to follow-up.^{32, 38-40} There were significant differences in some of the baseline characteristics in Ilhanli et al.³⁶ trial.

3.3 Meta-analysis and sensitivity analysis

The results of the meta-analysis and sensitivity of nine studies is reported in Table 2.

3.3.1 Pain

Outcomes of VAS are shown in the Figure 3. Patients who received PRP reported statistically significant improvements at short-term follow-up for VAS score (MD, -1.56 [95% CI, -2.82 to -0.30]; $I^2=97\%$; $P=.02$). In order to assess the reliability of the results, studies with a high risk of bias were excluded from sensitivity analysis after removing 3 studies.^{34, 37, 40} Short-term VAS scores result was not altered (MD, -0.47 [-0.57 to -0.37]; $P= .01$) while the heterogeneity was substantially reduced ($I^2=0\%$).

There were no statistical differences at long-term follow-up for VAS score (MD, -2.17 [95% CI, -4.51 to 0.17]; $I^2=98\%$; $P= .007$). Regarding the high heterogeneity for VAS, sensitivity analyses were also used to make results more reliable. After removing three studies^{34, 36, 37} with high risk of bias, the results were not altered (MD, -0.51 [95% CI, -1.35 to 0.33]; $I^2=0\%$; $P= 0.74$).

3.3.2 Function

The results of meta and sensitivity analysis of functional indexes are reported in Appendix A. Patients who received PRP showed statistically significant improvements at short-term follow-up for CMS (MD, 16.48 [95% CI, 12.57 to 20.40]; $I^2=96\%$; $P< .00001$), and SPADI (MD, -18.78 [95% CI, -36.55 to -1.02]; $I^2=99\%$; $P= .04$), whereas the ASES score (MD, 7.68 [95% CI, -6.51 to 21.87]; $I^2=95\%$; $P= .29$). For SPADI, removing the study by Ozlem et al.³⁷ did not alter conclusions (MD, -11.72 [-14.37 to -9.07]; $I^2=0\%$; $P< .0001$), while the heterogeneity was significantly decreased. For ASES scores, after removing 1 study³⁷, heterogeneity was significantly decreased and result was not changed (MD, 2.12 [-3.03 to 7.26]; $I^2=0\%$; $P= .36$). Sensitivity analysis of CMS could not be performed after removing the Ozlem et al.³⁷ and Cai et al.³⁴

There were no statistical differences at long-term follow-up for SPADI (MD, -18.61; 95% CI, -47.83 to 10.61; $I^2 = 94\%$; $P = .21$). Additionally, there is no long-term ASES data to be pooled in this review. However, the CMS showed that PRP was statistical significantly more efficacious (MD, 24.30 [95% CI, 23.27 to 25.33]; $I^2=0\%$;

$P < .00001$) based on data from two studies. Sensitivity analysis was unable to be performed due to lack of data after removing low quality studies.

3.4 Subgroup analysis

The following 3 factors were selected for subgroup analysis among the VAS scores and CMS: the PRP centrifugation approach (single or double), the number of PRP injections and rehabilitation after PRP injections. The forest plots of subgroup analysis are shown in Figure 4. The results of long-term CMS were not pooled due to insufficient data.

Patients who received PRP injections prepared by double centrifugation showed improvement in VAS score at short-term follow-up (MD, -1.99; 95% CI, -3.63 to -0.35; $I^2=98\%$; $P = .02$) and long-term follow-up (MD, -4.88; 95% CI, -5.14 to -4.62; $I^2=0\%$; $P < .01$). Moreover, CMS was improved at short-term follow-up in patients who received PRP injection prepared by double centrifugation (MD, 20.36; 95% CI, 18.17 to 22.55; $I^2=92\%$; $P < .01$). PRP prepared by single centrifugation did not appear to cause significant changes in VAS or CMS.

For the number of PRP injections subgroup, patients received the single injection appeared to reduce short-term VAS score (MD, -0.71; 95% CI, -1.27 to -0.16; $I^2=0\%$; $P = .01$). However, there was no significant difference in multiple PRP injections subgroup for short-term or long-term VAS scores (all $P > .05$) with substantial heterogeneity ($I^2=98\%$). There was no pooled evidence to demonstrate patients who received PRP with single injection had better CMS score at short-term. Additionally, there was no significant difference in CMS scores for multiple injection subgroup (MD, 10.00; 95% CI, -12.93 to 32.92; $I^2=97\%$; $P = .39$).

Among studies in which the inclusion/exclusion of post-injection rehabilitation was reported, patients who participated in PT had reduced VAS scores at short-term follow-up (MD, -1.59.00; 95% CI, -2.95 to 0.24; $P = .02$), while with significant heterogeneity ($I^2=94\%$). However, it appeared that long-term VAS score did not differ between compared groups. For studies with rehabilitation exclusion, there was no significant difference between treatment groups for short-term and long-term VAS scores (all $P > .05$).

4. Discussion

This study is the first level 1 meta-analysis to investigate the clinical efficacy of PRP in PTRCs and rotator cuff tendinopathy. The results of this study showed that PRP treatment reduced the pain and improved function (CMS and SPADI) statistically compared with the control groups at short-term follow-up. Nevertheless, no long-term improvements were observed for pain and function, except CMS score with a large heterogeneity.

Previous systematic review¹⁶ demonstrated that PRP injections may not have short-term benefit as a non-operative treatment of chronic rotator cuff disease but with limited evidence, in contrast to our findings. Nonetheless, Chen et al.²⁶ reported that statistically improvements for functional outcomes in PRP-treated patients with rotator cuff tears comparing to controls, but none of them reached the MCIDs. Most of the controls in forementioned study were rotator cuff repair, which suggested PRP therapy was not worse than repair surgery. It is noteworthy that the MIDs of this study in pain scores between PRP and control groups were 1.76 at short-term and 2.11 at long-term follow-up. Both of them were beyond the MCID of pain (1.0). As for the secondary outcomes, the MIDs of the CMS and SPADI were all beyond their MCIDs. Nonetheless, short-term ASES (MID=7.16) did not reach its MCID (11.1). Hence, this suggests PRP injections provided statistically and clinically important improvements in pain relief and function for PTRCs and rotator cuff tendinopathy. However, the MCID seems to have obvious limitations. First, it is valid to be applied in groups but not the individuals. Second, it varies across different diseases, population and studies⁴¹. The conclusions of Chen et al. and ours both suggested potential benefits of PRP.

For subgroup analysis, the outcomes varied based on PRP centrifugation approach, number of PRP injections, and PRP alone or in combination with rehabilitation. Double centrifugation for PRP preparation was associated with lower VAS scores at short-term and long-term follow-up, as well as an increased CMS at short-term follow-up. The multiple number of PRP injections did not show any differences in the CMS and long-term VAS scores, while single injection of PRP resulted in statistically lower short-term

VAS score. Rehab following the injections was associated with statistically better VAS scores in the short term.

PRP efficacy has been shown to be related to leukocyte concentration, platelet concentration and use of an exogenous activating agent, which can be modified via PRP preparation such as the speed of centrifugation, number of centrifugation cycles, and addition of products.⁴² In laboratory study showed that double centrifugation resulted in higher platelet concentration in rabbits, compared with a single centrifugation protocol.⁴³ Additionally, there was higher platelet/leukocyte ratio on PRPs after second centrifugation according to de Vos RJ et al.¹³ Furthermore, the double centrifugation systems produce total white blood cell (WBC) counts at or above baseline, because they concentrate potentially beneficial monocyte or macrophage and lymphocyte WBC subpopulation.⁴⁴ However, the double centrifugation technique was questioned because of the potential alterations in platelet morphology, which might affect functions.⁴⁵ Other factors such as platelet concentration, the presence of WBC and activation agents were not included for this subgroup analyses, due to limited data. A simplistic definition of PRP is that the platelet count must be above baseline,^{46, 47} in addition to an increased platelet concentration.⁴⁸ Besides this, the presence of WBC in PRP product has been a topic of considerable debate in the literature, regarding to the question of whether WBCs inhibit or promote tissue healing.⁴⁹ Those inconsistent parameters of PRP may lead to the variability of the PRP efficacy and application among the published studies. Therefore, consensus recommendation by AAOS in 2018 and classification system for future biologic research by the American Academy of Physical Medicine and Rehabilitation both called for a standard PRP definition and preparation,^{50, 51} aiming to clarify the effect and reduce the heterogeneity among clinic trials.

There are several limitations to this study. The main limitation is the heterogeneity across these original studies, although sensitivity analysis was made to reduce the heterogeneity. First, the PRP preparation was inconsistent in all included RCTs and details of the kits, platelet concentration and leukocyte concentration were not fully-mentioned either³²⁻³⁶, which impeded further subgroups analysis. Although, we found that double centrifugation approach led to better results with relatively small number of

studies. Second, the subsequent rehabilitation can be a source of co-intervention effect that may overestimate the results of PRP intervention. Third, in most studies we included, details of rotator cuff tear such as lesion sites (articular-sided, bursal-sided or intratendinous tears) or classification were missing, which may have contributed to the heterogeneity⁵². Furthermore, shoulder functional assessments varied across these studies, which included the DASH, CMS, Western Ontario Rotator Cuff Index, Single Assessment Numeric Evaluation, SPADI, ASES and quick DASH, raising difficulty to pool data in this meta-analysis. Another limitation is the inconsistent of control group interventions, consisting of exercise, physical therapy, dry needling and other injections.

5. Clinical messages

- PRP as a conservative treatment for PTRCs and rotator cuff tendinopathy.
- PRP-treated patients with PTRCs and rotator cuff tendinopathy demonstrated statistical and clinical improvements in pain and function within 6 months, although the effect may not last for a longer time.
- PRP with double centrifugation, single injection or rehabilitation followed could lead to better effects, although further studies were needed.

6. Authors Contributions

XNX completed the searching, selected the included meta-analysis, appraised the quality, extracted data, and drafted the manuscript; JD completed the searching, selected the included meta-analysis, appraised the quality, extracted data, and help to drafting the manuscript; YL helped to judge the risk of bias; XY revised this manuscript; BC developed the protocol; HCH conceived of the study, and revised this manuscript. The all authors have read and approved the final version of the manuscript, and agree with the order of presentation of the authors.

7. Conflict of interest statement

The author(s) declared no potential conflicts of interest with respect to the research, authorship and/or publication of this article.

8. Funding

This work was funded by the of Health and Family Planning Commission of Sichuan Province for applied research programme (Reference Number 20PJ037) and National Natural Science Foundation (Reference Number 81972146).

References

1. Fu X, Yung PS, Ma CC, et al. Scapular Kinematics in Athletes With and Without Rotator Cuff Tendinopathy: A Systematic Review. *J Sport Rehabil* 2019; 1-10. 2019/12/24. DOI: 10.1123/jsr.2019-0095.
2. Lubiowski P, Kaczmarek P, Cisowski P, et al. Rotational glenohumeral adaptations are associated with shoulder pathology in professional male handball players. *Knee Surg Sports Traumatol Arthrosc* 2018; 26: 67-75. 2017/02/16. DOI: 10.1007/s00167-017-4426-9.
3. Park JY, Kim J, Lee JH, et al. Does a Partial Rotator Cuff Tear Affect Pitching Ability? Results From an MRI Study. *Orthop J Sports Med* 2019; 7: 2325967119879698. 2020/02/06. DOI: 10.1177/2325967119879698.
4. Monrad N, Ganestam A, Kallemose T, et al. Alarming increase in the registration of degenerative rotator cuff-related lesions a nationwide epidemiological study investigating 244,519 patients. *Knee Surg Sports Traumatol Arthrosc* 2018; 26: 188-194. 2017/06/26. DOI: 10.1007/s00167-017-4626-3.
5. Kesikburun S, Tan AK, Yilmaz B, et al. Platelet-rich plasma injections in the treatment of chronic rotator cuff tendinopathy: a randomized controlled trial with 1-year follow-up. *Am J Sports Med* 2013; 41: 2609-2616. 2013/07/31. DOI: 10.1177/0363546513496542.
6. Seitz AL, McClure PW, Finucane S, et al. Mechanisms of rotator cuff tendinopathy: intrinsic, extrinsic, or both? *Clin Biomech (Bristol, Avon)* 2011; 26: 1-12. 2010/09/18. DOI: 10.1016/j.clinbiomech.2010.08.001.
7. Mihata T, Morikura R, Hasegawa A, et al. Partial-Thickness Rotator Cuff Tear by Itself Does Not Cause Shoulder Pain or Muscle Weakness in Baseball Players. *Am J*

Sports Med 2019; 47: 3476-3482. 2019/10/15. DOI: 10.1177/0363546519878141.

8. Lewis J. Rotator cuff related shoulder pain: Assessment, management and uncertainties. *Man Ther* 2016; 23: 57-68. 2016/04/17. DOI: 10.1016/j.math.2016.03.009.

9. Andrews JR. Diagnosis and treatment of chronic painful shoulder: review of nonsurgical interventions. *Arthroscopy* 2005; 21: 333-347. 2005/03/10. DOI: 10.1016/j.arthro.2004.11.003.

10. Merolla G, Bianchi P and Porcellini G. Ultrasound-guided subacromial injections of sodium hyaluronate for the management of rotator cuff tendinopathy: a prospective comparative study with rehabilitation therapy. *Musculoskelet Surg* 2013; 97 Suppl 1: 49-56. 2013/04/23. DOI: 10.1007/s12306-013-0259-y.

11. Mohamadi A, Chan JJ, Claessen FM, et al. Corticosteroid Injections Give Small and Transient Pain Relief in Rotator Cuff Tendinosis: A Meta-analysis. *Clin Orthop Relat Res* 2017; 475: 232-243. 2016/07/30. DOI: 10.1007/s11999-016-5002-1.

12. Lin MT, Chiang CF, Wu CH, et al. Comparative Effectiveness of Injection Therapies in Rotator Cuff Tendinopathy: A Systematic Review, Pairwise and Network Meta-analysis of Randomized Controlled Trials. *Arch Phys Med Rehabil* 2019; 100: 336-349 e315. 2018/08/05. DOI: 10.1016/j.apmr.2018.06.028.

13. de Vos RJ WA, van Schie HT, Bierma-Zeinstra SM, Verhaar JA, Weinans H, Tol JL. Platelet-rich plasma injection for chronic Achilles tendinopathy: a randomized controlled trial. *JAMA* 2010; 303(2):144-9.

14. Foster TE, Puskas BL, Mandelbaum BR, et al. Platelet-rich plasma: from basic science to clinical applications. *Am J Sports Med* 2009; 37: 2259-2272. 2009/10/31. DOI: 10.1177/0363546509349921.

15. Dohan Ehrenfest DM, Rasmusson L and Albrektsson T. Classification of platelet concentrates: from pure platelet-rich plasma (P-PRP) to leucocyte- and platelet-rich fibrin (L-PRF). *Trends Biotechnol* 2009; 27: 158-167. 2009/02/04. DOI: 10.1016/j.tibtech.2008.11.009.

16. Hurley ET, Hannon CP, Pauzenberger L, et al. Nonoperative Treatment of Rotator Cuff Disease With Platelet-Rich Plasma: A Systematic Review of Randomized

- Controlled Trials. *Arthroscopy* 2019; 35: 1584-1591. 2019/04/20. DOI: 10.1016/j.arthro.2018.10.115.
17. Weber S and Chahal J. Management of Rotator Cuff Injuries. *J Am Acad Orthop Surg* 2020; 28: e193-e201. 2019/10/11. DOI: 10.5435/JAAOS-D-19-00463.
18. Yeo SM, Noh SJ, Ha CW, et al. Effect of platelet-rich plasma on the degenerative rotator cuff tendinopathy according to the compositions. *Journal of orthopaedic surgery and research* 2019; 14: 408.
19. Centeno C, Fausel Z, Stemper I, et al. A Randomized Controlled Trial of the Treatment of Rotator Cuff Tears with Bone Marrow Concentrate and Platelet Products Compared to Exercise Therapy: A Midterm Analysis. *Stem Cells International* 2020; 2020: 5962354.
20. Amrhein V GS, McShane B. Scientists rise up against statistical significance. *Nature* 2019; 567(7748):305-307.
21. Chan LS. Minimal clinically important difference (MCID)--adding meaning to statistical inference. *Am J Public Health* 2013; 103: e24-25. 2013/09/14. DOI: 10.2105/AJPH.2013.301580.
22. Liberati A, Altman DG, Tetzlaff J, et al. The PRISMA statement for reporting systematic reviews and meta-analyses of studies that evaluate healthcare interventions: explanation and elaboration. *BMJ* 2009; 339: b2700. 2009/07/23. DOI: 10.1136/bmj.b2700.
23. Hoit G, Whelan DB, Dwyer T, et al. Physiotherapy as an Initial Treatment Option for Femoroacetabular Impingement: A Systematic Review of the Literature and Meta-analysis of 5 Randomized Controlled Trials. *Am J Sports Med* 2020; 48: 2042-2050. 2019/11/28. DOI: 10.1177/0363546519882668.
24. Takeshima N, Sozu T, Tajika A, et al. Which is more generalizable, powerful and interpretable in meta-analyses, mean difference or standardized mean difference? *BMC Med Res Methodol* 2014; 14: 30. 2014/02/25. DOI: 10.1186/1471-2288-14-30.
25. Patsopoulos NA, Evangelou E and Ioannidis JP. Sensitivity of between-study heterogeneity in meta-analysis: proposed metrics and empirical evaluation. *Int J Epidemiol* 2008; 37: 1148-1157. 2008/04/22. DOI: 10.1093/ije/dyn065.

26. Chen X, Jones IA, Togashi R, et al. Use of Platelet-Rich Plasma for the Improvement of Pain and Function in Rotator Cuff Tears: A Systematic Review and Meta-analysis With Bias Assessment. *Am J Sports Med* 2020; 48: 2028-2041. 2019/11/20. DOI: 10.1177/0363546519881423.
27. Cvetanovich GL, Gowd AK, Liu JN, et al. Establishing clinically significant outcome after arthroscopic rotator cuff repair. *J Shoulder Elbow Surg* 2019; 28: 939-948. 2019/01/28. DOI: 10.1016/j.jse.2018.10.013.
28. Negahban H, Behtash Z, Sohani SM, et al. Responsiveness of two Persian-versions of shoulder outcome measures following physiotherapy intervention in patients with shoulder disorders. *Disabil Rehabil* 2015; 37: 2300-2304. 2015/02/03. DOI: 10.3109/09638288.2015.1005760.
29. Devji T, Carrasco-Labra A, Qasim A, et al. Evaluating the credibility of anchor based estimates of minimal important differences for patient reported outcomes: instrument development and reliability study. *BMJ* 2020; 369: m1714. 2020/06/06. DOI: 10.1136/bmj.m1714.
30. Diez-Fernandez A, Alvarez-Bueno C, Martinez-Vizcaino V, et al. Total Dairy, Cheese and Milk Intake and Arterial Stiffness: A Systematic Review and Meta-Analysis of Cross-sectional Studies. *Nutrients* 2019; 11 2019/04/03. DOI: 10.3390/nu11040741.
31. Laudy AB, Bakker EW, Rekers M, et al. Efficacy of platelet-rich plasma injections in osteoarthritis of the knee: a systematic review and meta-analysis. *Br J Sports Med* 2015; 49: 657-672. 2014/11/25. DOI: 10.1136/bjsports-2014-094036.
32. Sari A and Eroglu A. Comparison of ultrasound-guided platelet-rich plasma, prolotherapy, and corticosteroid injections in rotator cuff lesions. *Journal of Back and Musculoskeletal Rehabilitation* 2020; 33: 387-396.
33. Schwitzguebel AJ, Kolo FC, Tirefort J, et al. Efficacy of Platelet-Rich Plasma for the Treatment of Interstitial Supraspinatus Tears: A Double-Blinded, Randomized Controlled Trial. *Am J Sports Med* 2019; 47: 1885-1892. 2019/06/05. DOI: 10.1177/0363546519851097.
34. Cai YU, Sun Z, Liao B, et al. Sodium Hyaluronate and Platelet-Rich Plasma for Partial-Thickness Rotator Cuff Tears. *Med Sci Sports Exerc* 2019; 51: 227-233.

2018/09/11. DOI: 10.1249/MSS.0000000000001781.

35. Ibrahim DH, El-Gazzar NM, El-Saadany HM, et al. Ultrasound-guided injection of platelet rich plasma versus corticosteroid for treatment of rotator cuff tendinopathy: Effect on shoulder pain, disability, range of motion and ultrasonographic findings. *The Egyptian Rheumatologist* 2019; 41: 157-161. DOI: 10.1016/j.ejr.2018.06.004.

36. Ilhanli I, Guder N and Gul M. Platelet-Rich Plasma Treatment With Physical Therapy in Chronic Partial Supraspinatus Tears. *Iran Red Crescent Med J* 2015; 17: e23732. 2015/10/17. DOI: 10.5812/ircmj.23732.

37. Ozlem Akan T BDM, Hikmet Koçyiğit, KorhanBarış Bayram, HuriyeErbak Yilmaz, Aliye. Efficacy of ultrasound guided platelet-rich plasma in the repair of partial and full-thickness supraspinatus tears. *Int J Clin Exp Med* 2019; 2019;12(9):11918–11929.

38. Rha DW, Park GY, Kim YK, et al. Comparison of the therapeutic effects of ultrasound-guided platelet-rich plasma injection and dry needling in rotator cuff disease: a randomized controlled trial. *Clin Rehabil* 2013; 27: 113-122. 2012/10/05. DOI: 10.1177/0269215512448388.

39. Shams A, El-Sayed M, Gamal O, et al. Subacromial injection of autologous platelet-rich plasma versus corticosteroid for the treatment of symptomatic partial rotator cuff tears. *Eur J Orthop Surg Traumatol* 2016; 26: 837-842. 2016/08/22. DOI: 10.1007/s00590-016-1826-3.

40. Wesner M, Defreitas T, Bredy H, et al. A Pilot Study Evaluating the Effectiveness of Platelet-Rich Plasma Therapy for Treating Degenerative Tendinopathies: A Randomized Control Trial with Synchronous Observational Cohort. *PLoS One* 2016; 11: e0147842. 2016/02/06. DOI: 10.1371/journal.pone.0147842.

41. Angst F, Aeschlimann A and Angst J. The minimal clinically important difference raised the significance of outcome effects above the statistical level, with methodological implications for future studies. *J Clin Epidemiol* 2017; 82: 128-136. 2016/12/18. DOI: 10.1016/j.jclinepi.2016.11.016.

42. Johal H, Khan M, Yung SP, et al. Impact of Platelet-Rich Plasma Use on Pain in

- Orthopaedic Surgery: A Systematic Review and Meta-analysis. *Sports Health* 2019; 11: 355-366. 2019/05/29. DOI: 10.1177/1941738119834972.
43. Nagata MJ MM, Furlaneto FA, Fucini SE, Bosco AF, Garcia VG, Deliberador TM, de Melo LG. Effectiveness of two methods for preparation of autologous platelet-rich plasma: an experimental study in rabbits. *Eur J Dent* 2010; 4(4):395-402.
44. Allan M, Kimberly H, James W, et al. Sports Medicine Applications of Platelet Rich Plasma. *Current Pharmaceutical Biotechnology* 2012; 13: 1185-1195. DOI: <http://dx.doi.org/10.2174/138920112800624283>.
45. MSA H. Cost Effectiveness of a Platelet-rich Plasma Preparation Technique for Clinical Use. *Wounds* 2018; 30(7):186–190.
46. Marx RE. Platelet-rich plasma (PRP): what is PRP and what is not PRP? *Implant Dent* 2001; 10: 225-228.
47. Pietrzak WS EB. Platelet rich plasma: biology and new technology. *J Craniofac Surg* 2005; 16(6):1043–1054.
48. Ayatollahi A, Hosseini H, Shahdi M, et al. Platelet-rich Plasma by Single Spin Process in Male Pattern Androgenetic Alopecia: Is it an Effective Treatment? *Indian Dermatol Online J* 2017; 8: 460-464. DOI: 10.4103/idoj.IDOJ_11_17.
49. Hendel MD, Bryan JA, Barsoum WK, et al. Comparison of patient-specific instruments with standard surgical instruments in determining glenoid component position: a randomized prospective clinical trial. *J Bone Joint Surg Am* 2012; 94: 2167-2175. 2012/12/12. DOI: 10.2106/JBJS.K.01209.
50. Chu CR, Rodeo S, Bhutani N, et al. Optimizing Clinical Use of Biologics in Orthopaedic Surgery: Consensus Recommendations From the 2018 AAOS/NIH U-13 Conference. *J Am Acad Orthop Surg* 2019; 27: e50-e63. 2018/10/10. DOI: 10.5435/JAAOS-D-18-00305.
51. Mautner K, Malanga GA, Smith J, et al. A call for a standard classification system for future biologic research: the rationale for new PRP nomenclature. *PM R* 2015; 7: S53-S59. 2015/04/14. DOI: 10.1016/j.pmrj.2015.02.005.
52. Ellman H. Diagnosis and treatment of incomplete rotator cuff tears. *Clinical orthopaedics and related research* 1990: 64-74.

Table 1. Characteristics of included Studies

First Author (Year)	Type of injury	Overview			Demographics		Details of PRP						
		Control treatment	Outcome measured	Follow-up, mo	Mean Age, y	Female Patients, n (%)	Preparation kit	Activation	LR or LP	Platelet Concentra- tion	Volume, mL	Injection times and intervals	
Sari et al. [32] 2020	bursitis, RC tendinosis, or partial tears	Lidocaine	VAS, ASES, WORC	0.75, 3, 6	52	77 (64%)	NR	CaCl ₂	NR	NR	5-fold	5	1
Kesikburun et al. [5] 2013	RC tendinopathy	Saline	VAS, SPADI, WORC, ROM	0.75, 1.5, 3, 6, 12	48	27 (68%)	GPS (Biomet Biologics)	None	NR	NR	340.2×10 ³ /μ L	5	1
Rha et al. [38] 2013	Tendinosis or partial- thickness supraspinatus tear	Dry needling	VAS, SPADI, ROM	0.5, 3, 6	53	22 (56%)	Prosys (Tozaiholdings)	NR	NR	NR	NR	3	2
Ozlem et al. [37] 2019	Partial- thickness RC tear	Exercise	VAS, CMS, DASH, SPADI	0.75, 1.5, 3, 6, 12	50	23 (51%)	NR	CaCl ₂	NR	NR	NR	1	3, 3 weeks
Cai et al. [34] 2019	Partial- thickness RC tear	Saline	VAS, CMS, ASES	1, 3, 6, 12	40	63 (46%)	NR	None	LP	LP	1000×10 ³ /μ L	4	4, weekly
Ibrahim et al. [35] 2018	RC tendinopathy	Cortico- steroid	VAS, ROM SDQ	2	44	17 (57%)	NR	Thrombin	LP	LP	NR	2	1
Ilhanli et al.	Partial	Physical	VAS, ROM,	12	59	45	NR	CaCl ₂	NR	NR	NR	6	3, 2 weeks

[36] 2015	supraspinatus tear	therapy	DASH				(73%)						
Schwitzguebel et al. [33] 2019	InterstitiaL supraspinatus tear	Saline	VAS, ASES, CMS, SANE	7, >12	48	35	(44%)	Regenkit BCT	None	LP	NR	2	2
Wesner et al. [40] 2016	RC tendinopathy	Saline	VAS, DASH, WORC	3, 6	49	3	(33%)	Harvest system	NR	NR	NR	4	1
Sham et al. [39] 2016	partial supraspinatus tear	Cortico-steroid	CMS, ASES, SST	1.5, 3, 6	51	19	(48%)	MyCells (ProTech)	NR	NR	NR	2-2.5	1

Abbreviations: RC: rotator cuff, NR: not reported, LP: leukocyte poor, LR: leukocyte rich, mo: month, CaCl₂: calcium chloride, VAS: Visual analogue scale, ASES: American Shoulder and Elbow Surgeons, CMS: Constant-Murley score, DASH: Disabilities of the Arm, Shoulder and Hand, SPADI: Shoulder Pain and Disability Index, SST: Simple Shoulder Test, VAS: visual analog scale, WORC: Western Ontario Rotator Cuff Index, SDQ: Shoulder Disability Questionnaire, SANE: Single Assessment Numerical Evaluation, ROM: range of motion.

Table 2. Summary of meta-analysis and sensitivity analysis for outcomes measures

Outcome	Follow-up	Participants (Trials), n	MD (95% CI)	Heterogeneity	MID
VAS	Short-term	356 (7)	-1.56 (-2.82 to -0.30)	97%	1.76
	Long-term	319 (5)	-2.17 (-4.51 to 0.17)	98%	2.11
CMS	Short-term	217 (3)	16.48 (12.57 to 20.40)	96%	12.86
	Long-term	137 (2)	24.30 (23.27 to 25.33)	100%	23.10
SPADI	Short-term	115 (3)	-18.78 (-36.55 to -1.02)	99%	21.31
	Long-term	85 (2)	-18.61 (-47.83 to 10.61)	94%	17.74
ASES	Short-term	232 (3)	7.68 (-6.51 to 21.87)	95%	7.16
Sensitivity analysis					
VAS	Short-term	210 (4)	-0.47 (-0.57 to -0.37)	0%	
	Long-term	120 (2)	-0.51 (-1.35 to 0.33)	0%	
CMS	Short-term	80 (1)	-2.00 (-9.30 to 5.30)	-	
SPADI	Short-term	70 (2)	-11.72(-14.37 to -9.07)	0%	
	Long-term	40 (1)	-2.80 (-16.95 to 11.35)	-	
ASES	Short-term	140 (2)	2.12(-3.03 to 7.26)	0%	

Abbreviations: VAS: visual analog scale, CMS: Constant-Murley score, SPADI: Shoulder Pain and Disability Index, ASES: American Shoulder and Elbow Surgeons, MD: Mean difference, CI: confidence interval, MID: minimal important difference, -: means can't calculate.

Figure legends

Figure 1. the graph shows a PRISMA (Preferred Reporting Items for Systematic Reviews and Meta-Analyses) flow diagram of the study selection process.

Figure 2. the graph shows quality assessment and risk of bias summary: review authors' judgements about each risk of bias item for each included study by Cochrane Collaboration risk of bias tool.

Figure 3. the graph shows forest plots of VAS score (A) and sensitivity analysis detailing mean differences (B). VAS: visual analogue scale.

Figure 4. the graph shows VAS score based on the times of PRP centrifugation approach (A), number of injections (B), and followed rehabilitation (C) at short-term (6 ± 1 months) and at long-term (≥ 1 year) follow-up. (D) shows short-term CMS based on centrifugation approach and number of injections. VAS: visual analogue scale, PRP: platelet-rich plasma, CMS: Constant-Murley score.

Figure 1.

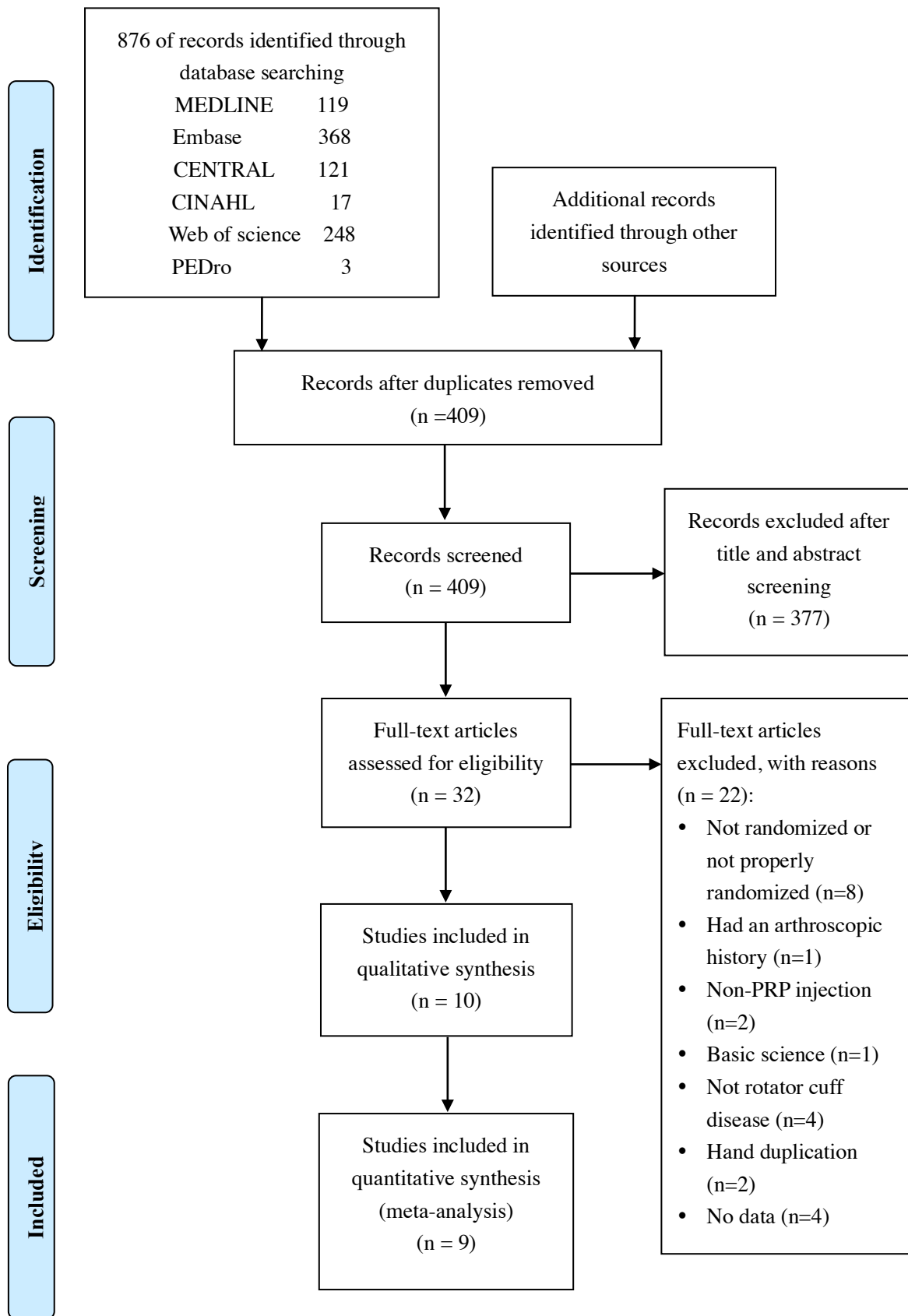


Figure 2.



× means that the article is high risk of bias; √ means that the article is low risk of bias, and ? means moderate.

Figure 3.

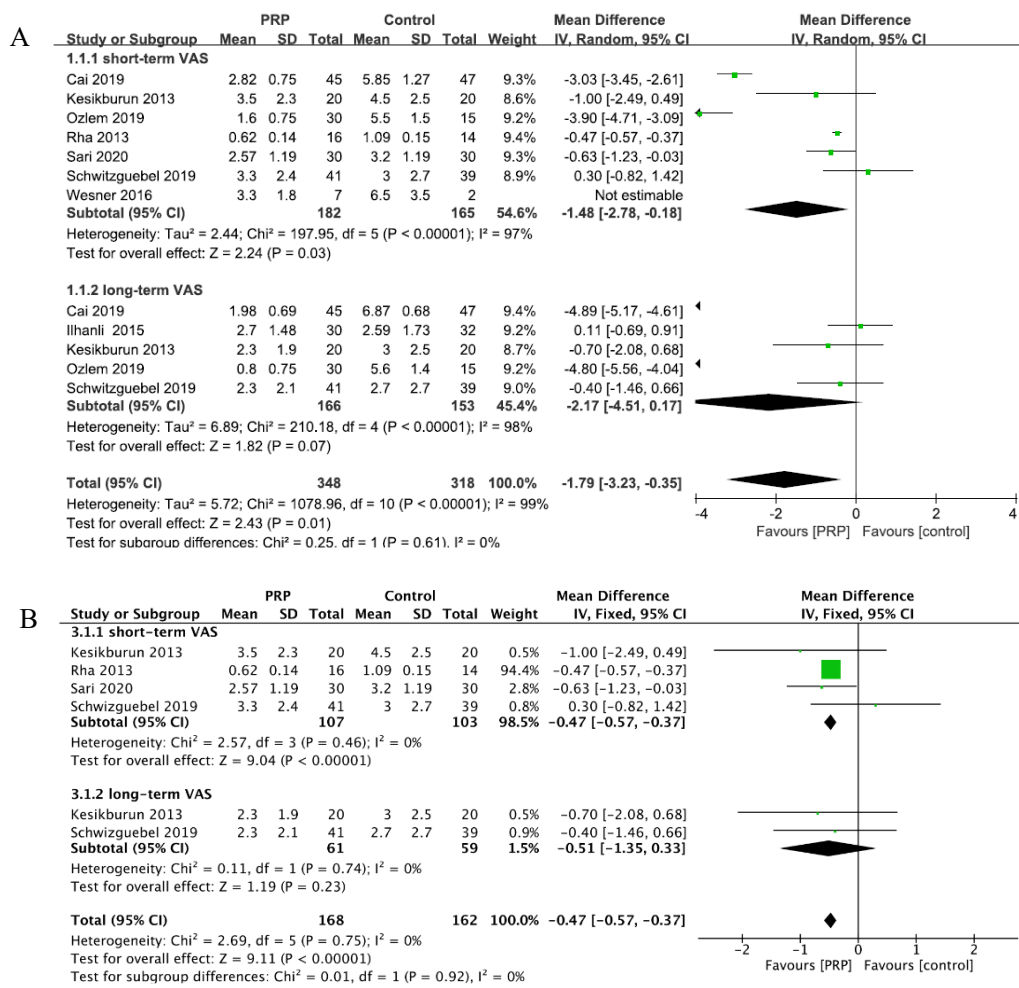


Figure 4.

