

1 Longitudinal analysis of COVID-19 patients shows age-associated T cell changes independent
2 of ongoing ill-health

3 Liam Townsend^{1,2}, Adam H Dyer³, Aifric Naughton⁴, Rachel Kiersey⁴, Dean Holden⁴, Mary
4 Gardiner⁴, Joanne Dowds⁵, Kate O'Brien⁵, Ciaran Bannan¹, Parthiban Nadarajan⁶, Jean Dunne⁴,
5 Ignacio Martin-Loeches⁷, Padraic G Fallon⁸, Colm Bergin^{1,2}, Cliona O'Farrelly^{9,10}, Cliona Ni
6 Cheallaigh^{1,2}, Nollaig M Bourke³, Niall Conlon^{4,11}

7 1. Department of Infectious Diseases, St James's Hospital, Dublin, Ireland

8 2. Department of Clinical Medicine, School of Medicine, Trinity Translational Medicine
9 Institute, Trinity College Dublin, Ireland

10 3. Department of Medical Gerontology, School of Medicine, Trinity Translational Medicine
11 Institute, Trinity College Dublin, Ireland

12 4. Department of Immunology, St James's Hospital, Dublin, Ireland

13 5. Department of Physiotherapy, St James's Hospital, Dublin, Ireland

14 6. Department of Respiratory Medicine, St James's Hospital, Dublin, Ireland

15 7. Department of Intensive Care Medicine, St James's Hospital, Dublin, Ireland

16 8. School of Medicine, Trinity Biomedical Sciences Institute, Trinity College Dublin, Dublin,
17 Ireland

18 9. School of Biochemistry and Immunology, Trinity Biomedical Sciences Institute, Trinity
19 College Dublin, Ireland

20 10. Department of Comparative Immunology, School of Medicine, Trinity College Dublin,
21 Ireland

22 11. Department of Immunology, School of Medicine, Trinity College Dublin, Ireland

23 **Corresponding Author**

24 Liam Townsend

25 Department of Infectious Diseases, St James's Hospital, Dublin, Ireland

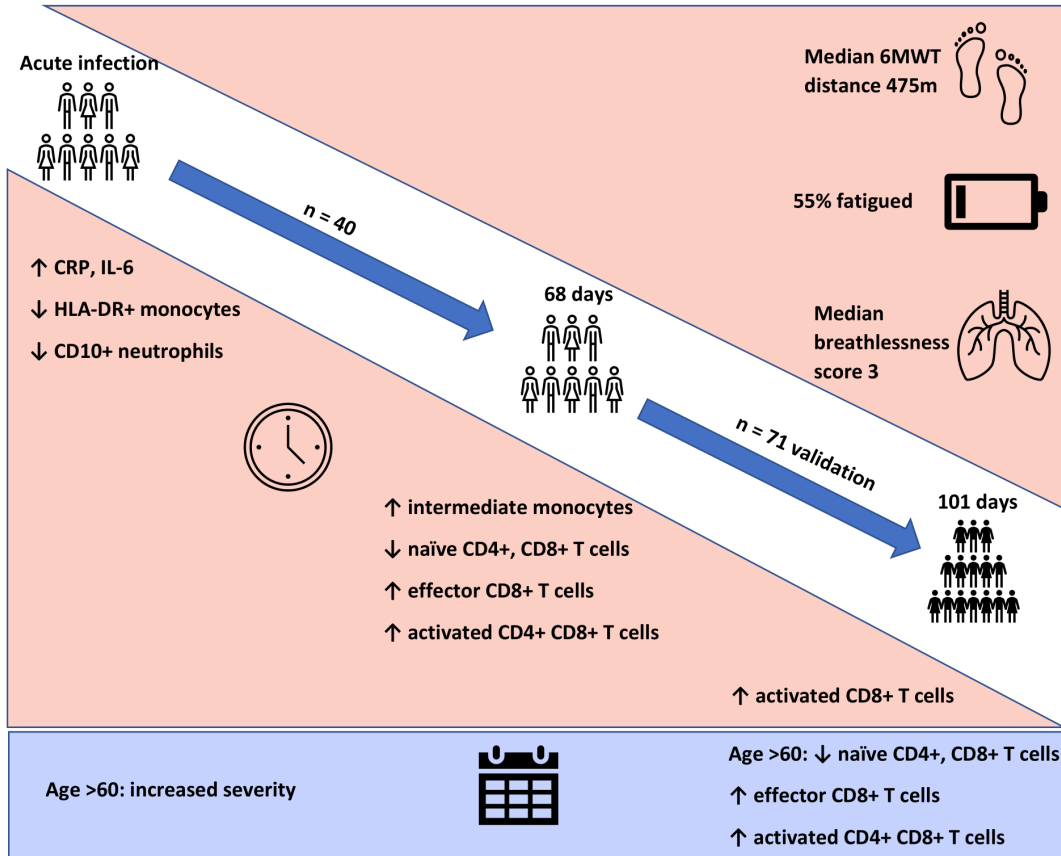
26 townsenl@tcd.ie

27 +353 14083709

28 ORCID 0000-0002-7089-0665

29

30 Graphical Abstract



31

32 **Abstract**

33 The trajectory of immunological and inflammatory changes following acute COVID-19 infection
34 are unclear. We investigate immunological changes in convalescent COVID-19 and interrogate
35 their potential relationships with persistent symptoms, termed *long COVID*.

36 We performed paired immunophenotyping at initial SARS-CoV-2 infection and convalescence
37 (n=40, median 68 days) and validated findings in 71 further patients at median 101 days
38 convalescence. Results were compared to 40 pre-pandemic controls. Fatigue and exercise
39 tolerance were assessed and investigated their relationship with convalescent results.

40 We demonstrate persistent expansion of intermediate monocytes, effector CD8+, activated CD4+
41 and CD8+ T cells, and reduced naïve CD4+ and CD8+ T cells at 68 days, with activated CD8+ T cells
42 remaining increased at 101 days. Patients >60 years also demonstrate reduced naïve CD4+ and
43 CD8+ T cells and expanded activated CD4+ T cells at 101 days. Ill-health, fatigue, and reduced
44 exercise tolerance were common but were not associated with immunological changes.

45

46 **Introduction**

47 COVID-19, caused by the SARS-CoV-2 virus, is responsible for the largest global pandemic in
48 modern medicine (1). The features of acute illness are well-described, ranging from disturbance
49 in smell and mild coryzal symptoms to acute respiratory failure and the need for invasive
50 mechanical ventilation (2, 3). Age is strongly associated with disease severity, with older
51 individuals suffering poorer outcomes (4, 5). The immunological changes associated with severe
52 disease are also known, with increased inflammatory proteins, coagulopathy and changes in
53 myeloid cell populations reported (6, 7). In particular, severe COVID-19 is characterised by
54 expansion of immature myeloid populations, with loss of HLA-DR expression by monocytes and
55 loss of CD10 expression on neutrophils (8, 9). Panlymphopenia is also prominent, with CD4+ T
56 cells particularly affected (10, 11).

57 In contrast to the well-characterised inflammatory and immunological signature of acute disease,
58 relatively little is known about resolution of inflammatory markers and immune cell population
59 changes during the convalescent period. These gaps in current knowledge of convalescence are
60 of immediate importance, with the emergence of prolonged symptoms following resolution of
61 acute infection, termed *long COVID* (12). The immunological features of this syndrome are only
62 being described at present, with short-term follow up (less than one month) of non-hospitalised
63 patients showing expansion of activated CD4+ and CD8+ T lymphocytes (13). Despite the
64 importance of this issue towards understanding the long-term consequences of COVID-19,
65 further insight into how long such changes persist, and the contribution of immune responses to
66 the symptoms of *long COVID*, is lacking.

67 The clinical characteristics of long COVID are protean and an agreed definition has yet to be
68 found; the most common symptoms include fatigue, shortness of breath and reduced exercise
69 tolerance (14, 15). The possible mechanisms for post-COVID fatigue and breathlessness have
70 been speculated to be associated with deconditioning, as well as hypothesised to be due to
71 persistent inflammation or immune activation (16). However, these connections remain
72 unexplored.

73 We hypothesised that, given the strong association between the immune response and severity
74 of acute COVID-19 infection, there may be persistent and chronic changes to the immune system
75 which may be linked to the long-term effects of COVID-19. Our goal was to determine if persistent
76 inflammatory and immune cell dysregulation was evident in the aftermath of SARS-CoV-2
77 infection. We further investigated the factors that might be associated with potential persistent
78 immune dysregulation and to interrogate the relationship between these measures and physical
79 ill-health post-COVID-19.

80

81 **Results**

82 *Participant characteristics*

83 Clinic appointments were offered to 356 patients, of whom 111 (31%) attended (**Supplemental**
84 **Figure 1**). We recruited three cohorts for this study. Cohort one comprised of forty participants
85 (aged 51.4 ± 16.9 years, 52.5% female) recruited for matched longitudinal blood sampling and
86 immunophenotyping at (i) time of initial COVID-19 disease and (ii) ten-week follow-up (median:
87 68, 61-72 days). Of these, 8 had mild (not hospitalised), 24 moderate (hospitalised) and 8 severe
88 (required admission to Intensive Care Unit) acute COVID-19 disease. Cohort two comprised of 71
89 individuals (aged 44.3 ± 14.1 years; 70% female) recruited from the post-COVID clinic at fourteen
90 weeks (median: 101, 76-117 days) after initial COVID-19 illness. Cohort two was younger, had
91 lower levels of frailty and had a greater proportion of females in comparison to cohort one.
92 Cohort two was also predominantly healthcare workers. In cohort two, 47 had mild, 18 had
93 moderate, and 6 had severe acute COVID. All patients had lymphoid and myeloid
94 immunophenotyping and detailed clinical and health assessments performed at outpatient
95 appointment. The combined sample consists of both cohort one and cohort two. Detailed
96 characteristics of cohort one, cohort two and the combined samples are presented in **Table 1**.

97

98 **Table 1: Cohort characteristics**

Characteristic	All (n = 111)	Cohort One (n = 40)	Cohort Two (N = 71)	Statistic
Sex, female, n (%)	70 (63.06)	21 (52.5)	49 (70)	$\chi^2 = 8.3, p = 0.004$
Mean age (SD)	45.9 (14.9)	51.4 (16.9)	44.3 (14.1)	$t = 2.2, p = 0.01$
Clinical Frailty Score, median (IQR)	1 (1 – 2)	2 (1 – 2.5)	1 (1-2)	$z = -4.3, p < 0.001$
Co-morbidities, median, n (IQR)	1 (0 – 2)	1 (0 – 2)	0 (0-2)	$z = -1.11, p = 0.27$
Co-medications, median, n (IQR)	1 (0 – 3)	1 (0 – 4)	1 (0-2)	$z = -1.14, p = 0.25$
Admission during acute infection, n (%)	48 (43)	30 (75)	18 (25)	$\chi^2 = 25.7, p < 0.001$
Admission to ICU, n (%)	14 (12.6)	8 (20)	6 (8)	$\chi^2 = 3.1, p = 0.08$
Time to follow up, days, median (IQR)	82 (67 – 112)	68 (60.5 – 71)	101 (76-117)	$z = 5.04, p < 0.001$
Feel back to full health (yes), n (%)	37 (33)	22 (55)	15 (21.2)	$\chi^2 = 16.7, p < 0.001$
Healthcare worker, n (%)	74 (66.7)	15 (37.5)	59 (83)	$\chi^2 = 23.9, p < 0.001$
Distance at 6MWT, m, median (IQR)	475 (415 – 540)	435 (390 – 540)	480 (430-540)	$z = 4.5, p = 0.65$
MBS, median (IQR)	3 (2 – 5)	3 (2 – 5)	3 (2 - 5)	$z = -0.42, p = 0.68$
Fatigue score, median (IQR)	15 (11 – 20)	13 (11 – 18)	17 (12 - 21)	$z = 1.58, p = 0.11$
Fatigue <i>caseness</i> , n (%)	61 (55)	15 (37.5)	46 (65)	$\chi^2 = 7.7, p 0.01$

99

100 χ^2 , Chi-squared test; t, t-test; z, Wilcoxon rank-sum test. 6MWT, 6-minute-walk test; MBS, Modified Borg Dyspnoea Scale

101 Cohort three comprised of forty healthy pre-pandemic controls (aged 47.3 ± 15.3 years; 55%
102 female) and was used for comparison of extended T cell immunophenotyping parameters, with
103 20 of these also having myeloid immunophenotyping performed. There were no age/sex
104 differences between controls and cohort one ($t = 0.9$, $p = 0.35$; $\chi^2 = 2.5$, $p = 0.11$ respectively) or
105 cohort two ($t = 1.1$, $p = 0.27$; $\chi^2 = 0.05$, $p = 0.82$ respectively).

106 *Persistent ill-health evident at 82 days following COVID-19*

107 We first investigated the prevalence of the cardinal features of *long COVID* in our cohort. All
108 participants were assessed for ongoing ill-health, fatigue and exercise tolerance at time of
109 convalescent immunophenotyping (median 82 days, IQR 67 – 112). Most patients (71/111, 64%)
110 reported that they did not feel back to full health, while 61 (55%) met the case definition for
111 fatigue. The median fatigue score for the cohort as a whole was 15 (IQR 11 – 20), while the
112 median fatigue score of those who met the case definition for fatigue was 20 (IQR 17 – 23) (**Table**
113 **1**). Two-thirds of participants (76/111; 68.4%) underwent a six-minute-walk test (6MWT). The
114 median distance covered was 475m (IQR 415 – 540). The median maximal Modified Borg
115 Dyspnoea Scale (MBS) score reported was 3 (IQR 2 – 5). The median distance covered by
116 convalescent individuals was lower than that seen in healthy populations, but higher than that
117 reported in post-ARDS patients (17, 18). These findings demonstrate that the primary features of
118 *long COVID* are common in our convalescent cohort who attended for follow up appointment.
119 We therefore wanted to further investigate if there were further physiological changes,
120 particularly in relation to immunity, in COVID convalescence.

121 *Recovery from COVID-19 is associated with resolution of inflammation, coagulopathy, and cell*
122 *turnover*

123 We examined the levels of inflammatory, cell turnover and coagulation markers, all of which are
124 known to be profoundly disturbed during acute COVID-19. Individuals in cohort one with acute
125 COVID-19 had coagulopathy (with increased D-Dimer and fibrinogen), a marked pro-
126 inflammatory response (elevated CRP, IL-6, TNF- α , IL-8 and IL-1 β) and lymphopenia, with an
127 increase in the neutrophil: lymphocyte ratio. All of these parameters had significantly improved
128 by ten weeks (**Table 2** and **Figure 1**) in the majority of individuals. Several participants had
129 persistent lymphopenia (5/40, 12.5%) and elevated D-dimer levels (10/40; 25%) at 10 weeks post
130 infection.

131

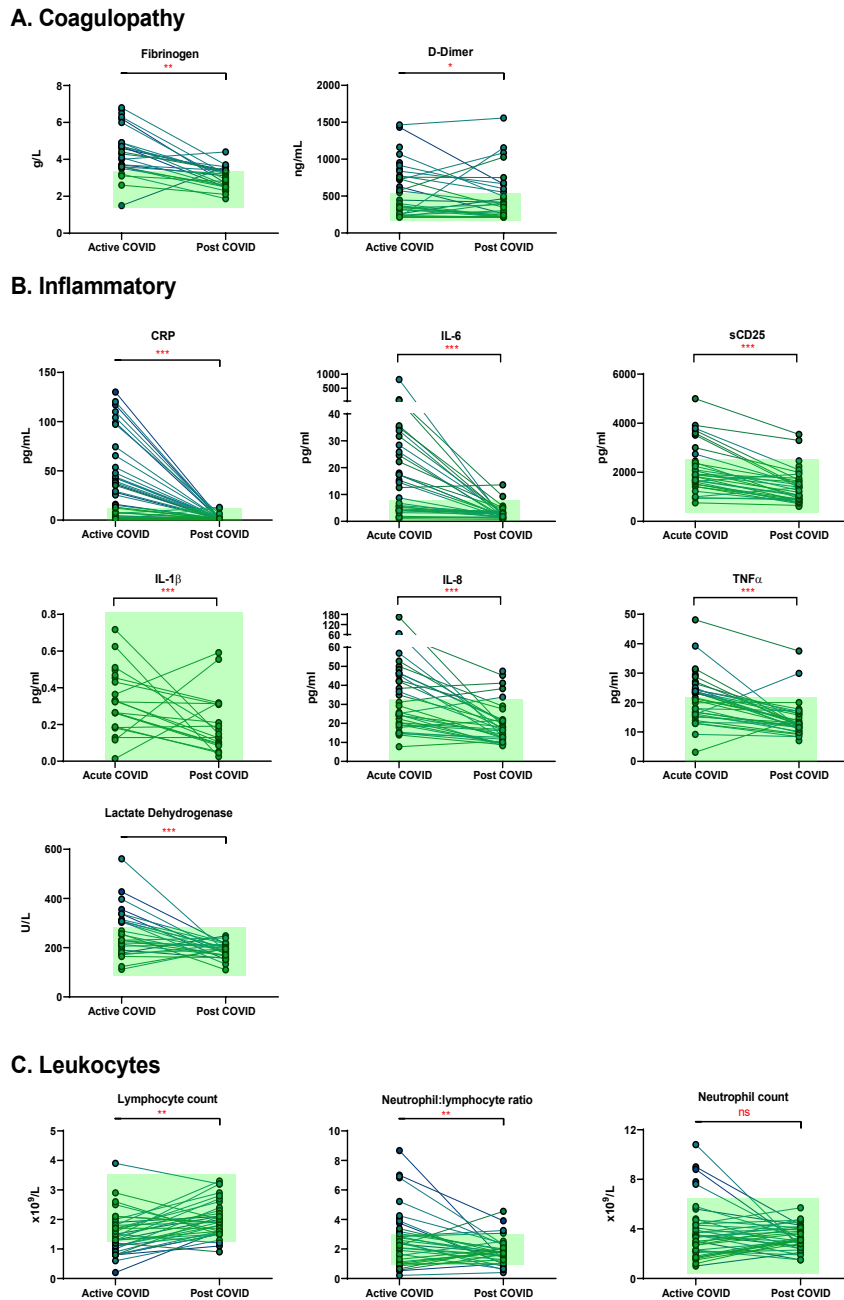
132 **Table 2. Active COVID-19 is associated with a significant pro-inflammatory response which normalises following resolution of**
 133 **acute infection**

Laboratory Parameter	Reference Range	Values		Statistic	N (%) Abnormal Results	
		Acute COVID-19	Post COVID-19		Acute COVID-19	Post COVID-19
Routine Laboratory Markers						
Neutrophil Count (x10 ⁹ /L)	2-7.5	3.5 (2.3-4.4)	3.15 (2.55-4.05)	z =0.47, p =0.64	5 (13%)	0 (0%)
Lymphocyte Count (x10 ⁹ /L)	1.5-3.5	1.3 (1-1.8)	1.9 (1.55-2.35)	z=-2.85, p = 0.004	24 (60%)	5 (13%)
Neutrophil: Lymphocyte ratio		2.5 (1.3-3.9)	1.7 (1.3-2.1)	z =2.82, p = 0.005		
Lactate Dehydrogenase (U/L)	135-250	230 (190-308)	187.5 (165-210)	z = 3.27, p = 0.001	14 (35%)	0 (0%)
Fibrinogen (g/L)	1.9-3.5	4.4 (3.6-6)	3 (2.6-3.4)	z = 2.86, p = 0.004	22 (55%)	2 (5%)
D-Dimer (ng/mL)	0-500	496 (258-851)	396 (215-599)	z = 1.93, p = 0.05	20 (50%)	10 (25%)
C Reactive Protein (mg/L)	0-5	28.15 (3.16-53.58)	1.43 (1.00-1.99)	z = 4.75, p<0.001	31 (78%)	3 (8%)
Pro-Inflammatory Cytokines						
IL-6 (pg/mL)		15.3 (4.19-31.7)	2.17 (1.45-3.35)	z = 4.72, p<0.001	22 (55%)	3 (8%)
IL-1 β (pg/mL)		0.26 (0.18-0.45)	0.19 (0.11-0.31)	z = 2,1, p = 0.035	1 (2.5%)	1 (2.5%)
TNF α (pg/mL)		21.3 (16-25)	12.2 (10.3-14.8)	z = 3.95, p<0.001	16 (40%)	2 (5%)
IL-8 (pg/mL)		31.1 (20.3-46.4)	16.5 (12.3-21.4)	z = 4.23, p<0.001	17 (42.5%)	4 (10%)
Soluble CD25 (pg/mL)		1,898 (1520-2455)	1,187 (878-1634)	z = 4.61, p<0.001	11 (28%)	2 (5%)

134
 135 Data presented as medians with IQRs. z, Wilcoxon matched pair

136

137 **Figure 1: Matched results of n=40 patients from acute to convalescent (median 68 days)**



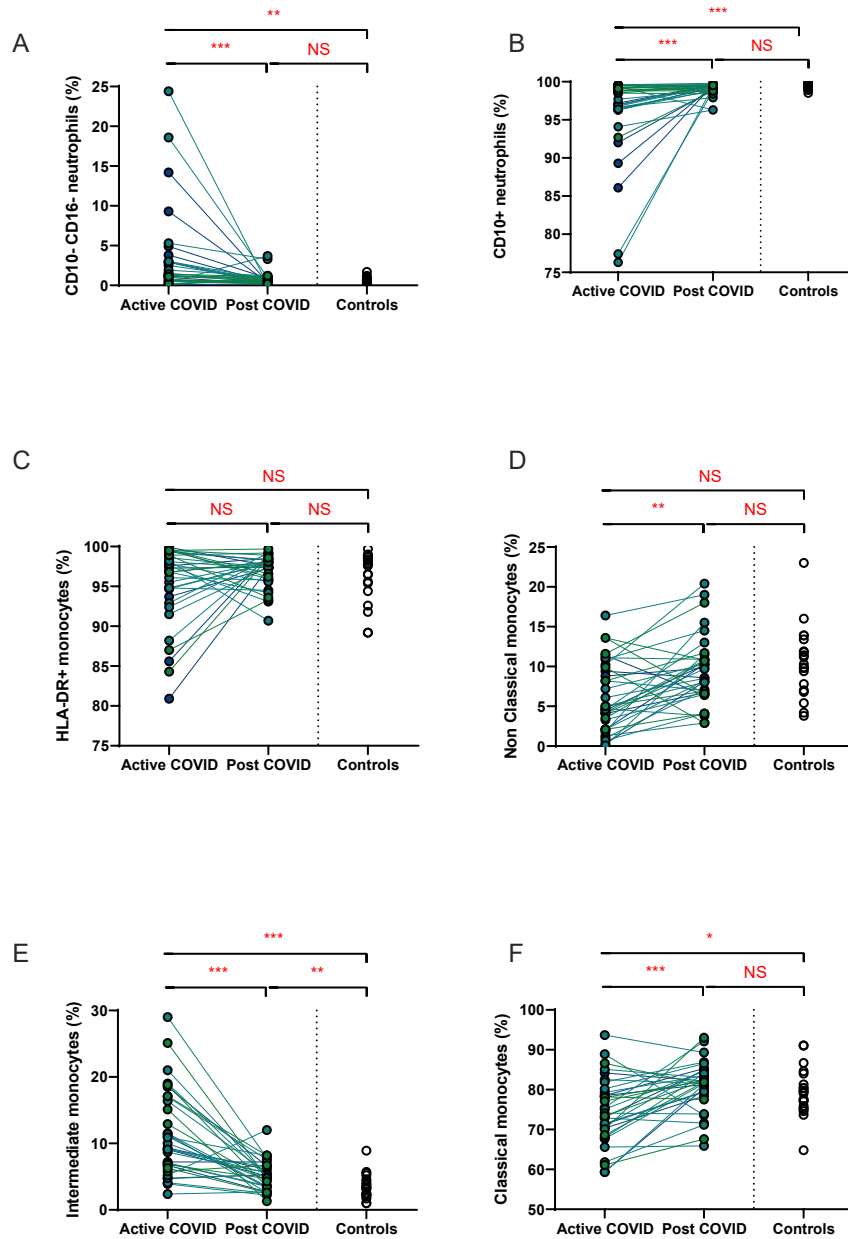
138

139 **Figure 1: (A)** Coagulopathy (fibrinogen, D-dimer) **(B)** Inflammatory (CRP, IL-6, sCD25, IL-1 β , IL-8,
 140 TNF α , LDH) **(C)** Cell turnover (lymphocytes, neutrophil: lymphocyte ratio, neutrophils). Shaded
 141 areas show normal ranges for each measure. Differences assessed by Wilcoxon signed-rank
 142 test. * p < 0.05, ** p < 0.01, *** p < 0.001, ns = Not Significant

143 *Persistent expansion of intermediate monocytes at 10 weeks post infection*

144 We found that acute COVID-19 was associated with expansion in immature neutrophils and
145 reduced overall CD10-expressing neutrophils (**Figures 2A, 2B**). These changes in neutrophils had
146 resolved by ten weeks to a level comparable to that of healthy controls. While HLA-DR+
147 monocytes increased at convalescence to levels of healthy controls, this increase was not
148 statistically significant; this likely reflects the mixed severities of the populations (**Figure 2C**). We
149 also noted a significant expansion in the proportion of CD14+CD16+ intermediate monocytes in
150 acute infection, with levels remaining significantly elevated at convalescence in comparison to
151 controls (**Figure 2E**). Changes in the proportion of other monocyte subsets resolved to a level
152 comparable to control participants (**Figures 2D, 2F**). We found no association between
153 convalescent intermediate monocytes and severity of initial infection ($\chi^2=0.58$, $p=0.76$).

154



156

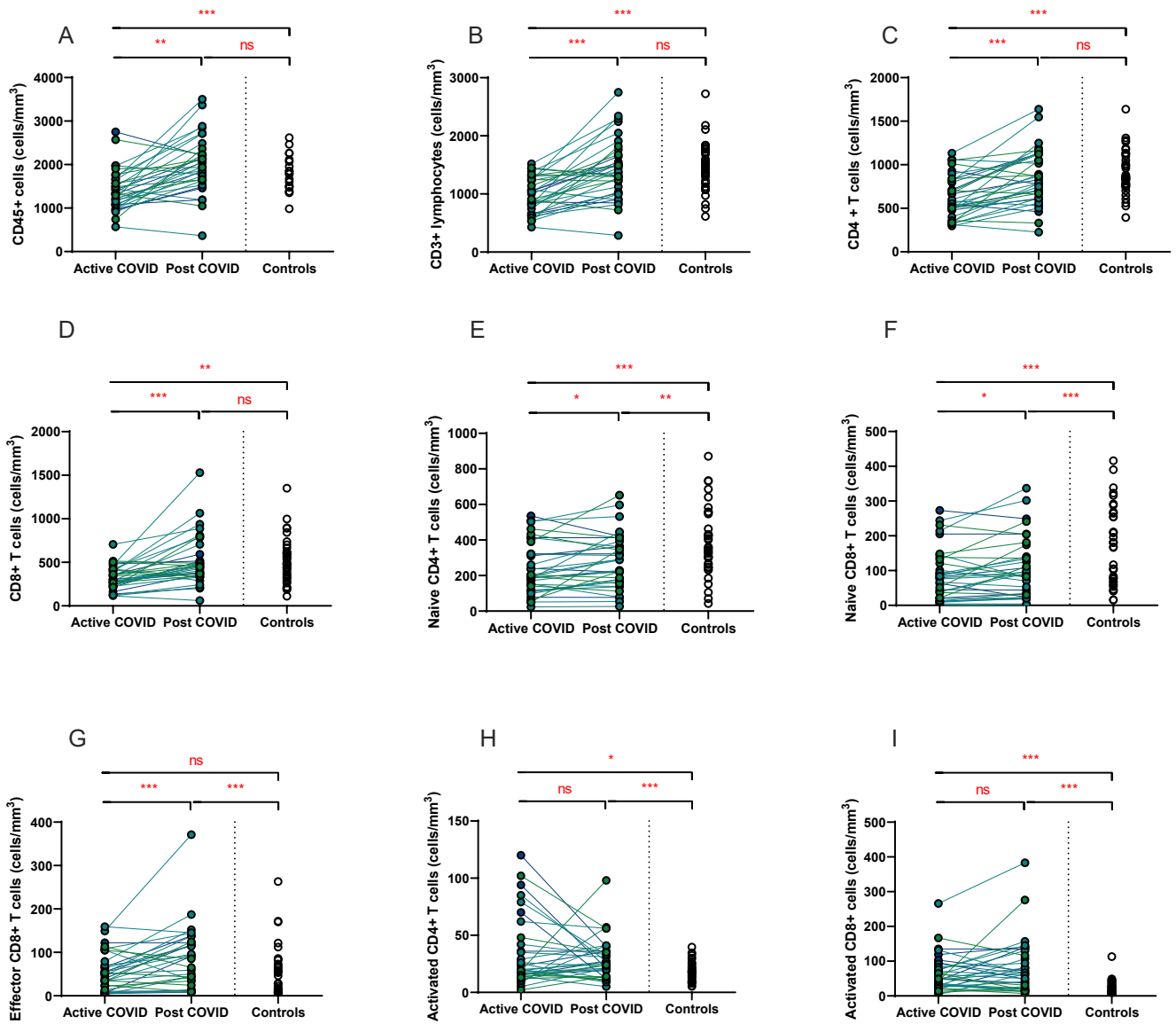
157 **Figure 2:** Matched peripheral whole blood myeloid cell proportions from n=40 patients recovered
 158 from COVID-19 versus uninfected controls (n=20). **(A)** CD10-CD16- immature neutrophils **(B)**
 159 CD10+ neutrophils **(C)** HLA-DR+ monocytes **(D)** non-classical monocytes **(E)** intermediate
 160 monocytes **(F)** classical monocytes. Differences assessed using Wilcoxon rank-sum (unpaired)
 161 and Wilcoxon sign-rank (paired) tests. * p < 0.05, ** p < 0.01, ***p < 0.001, NS = Not Significant

162 *Persistent changes to T cells in COVID-19 convalescence*

163 A hallmark of acute COVID-19 is profound lymphopenia, so we sought to investigate T cell
164 phenotypes in our longitudinal acute-convalescent cohort. As expected, acute SARS-CoV-2
165 infection was associated with striking lymphopenia (**Figure 3B**). We found a significant reduction
166 in the total number of immune (CD45+) cells, total lymphocytes (CD3+), CD4+ T cells and CD8+ T
167 cells in comparison to healthy controls (n=40). Despite this significant lymphopenia during acute
168 COVID-19 infection, at ten weeks post-COVID all of these counts had significantly recovered and
169 were similar to those of control participants (**Figures 3A-3D**).

170 On more detailed T cell immunophenotyping, we found that acute infection was associated with
171 a significant reduction in absolute naïve CD4+ and CD8+ T cell counts and increased activated
172 CD4+ and CD8+ T cell numbers in comparison to controls. Over the course of ten weeks, whilst
173 naïve CD4+ and CD8+ cell counts had partially recovered, they remained significantly lower than
174 the levels of healthy controls (**Figures 3E, 3F**). Numbers of effector CD8+ T cells remained
175 expanded over the course of COVID-19 recovery and counts were significantly greater than
176 healthy controls at ten-week follow-up (**Figure 3G**). One of the most notable differences was that
177 activated T cell numbers did not significantly change with resolution of illness; there were
178 significantly higher numbers of activated CD4+ and CD8+ T cells in patients ten weeks post-COVID
179 compared to healthy controls (**Figures 3H, 3I**). Interestingly, there was no association between
180 convalescent lymphocyte subset counts and severity of initial infection (naïve CD4+ T cells
181 $\chi^2=0.31$, $p=0.86$, naïve CD8+ T cells $\chi^2=4.12$, $p=0.13$, effector CD8+ T cells $\chi^2=0.29$, $p=0.19$,
182 activated CD4+ T cells $\chi^2=0.28$, $p=0.87$, activated CD8+ T cells $\chi^2=0.29$, $p=0.07$).

183 **Figure 3: Lymphocyte subsets from acute to convalescent COVID-19.**



184

185

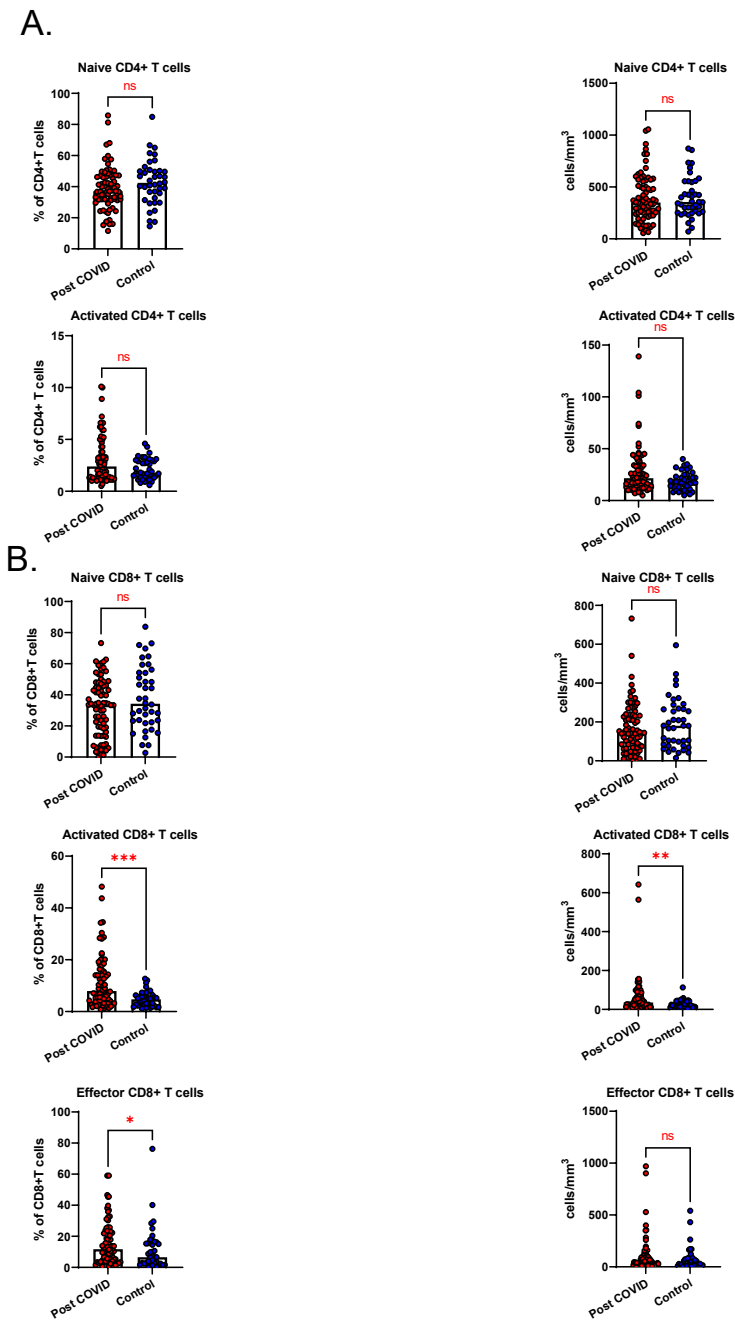
186 **Figure 3: Matched peripheral whole blood lymphoid cell counts from n=40 patients recovered**
 187 **from COVID-19 versus uninfected controls (n=40). (A) CD45+ immune cells (B) CD3+ lymphocytes**
 188 **(C) CD4+ T cells (D) CD8+ T cells (E) naïve CD4+ T cells (F) naïve CD8+ T cells (G) effector CD8+ T**
 189 **cells (H) activated CD4+ T cells (I) activated CD8+ T cells. Differences assessed using Wilcoxon**
 190 **rank-sum (unpaired) and Wilcoxon sign-rank (paired) tests. * p < 0.05, ** p < 0.01, *** p < 0.001, ns**
 191 **= Not Significant**

192

193 Alterations in the B cell compartment were relatively minor, with B cell counts recovering entirely
194 at convalescence (**Supplemental Figure 2A**). Similarly, while acute COVID-19 was also associated
195 with a significant decrease in NK cells, these had resolved to levels of healthy controls by ten
196 weeks after acute infection (**Supplemental Figure 2B**). Collectively, longitudinal follow up of
197 cohort one during convalescence revealed that while the overall panlymphopenia resolved,
198 infected individuals maintained aberrations in certain lymphocyte subset compartments;
199 specifically, persistently reduced naïve CD4+ and CD8+ T cells, in addition to expanded effector
200 CD8+ T cells and activated CD4+ and CD8+ T cells at a median of 68 days following infection.

201 Given the persistent T-cell subset changes seen in cohort one, as well as the expansion in
202 intermediate monocytes, we sought to validate these changes in a larger cohort of convalescent
203 individuals with blood samples obtained at a longer follow time of 101 days (cohort two). The
204 observations in cohort one were confirmed, with no differences in numbers of total immune
205 (CD45+) cells, total lymphocytes (CD3+), CD4+ T cells or CD8+ T cells at 14 weeks in comparison
206 to controls (**Supplemental Figure 3**). In contrast to the paired analysis at 10 weeks following acute
207 infection, we observed no significant differences in naïve CD4+ or CD8+ cells, suggesting these
208 cells had resolved to normal levels by 14 weeks in convalescence (**Figure 4**). However, the
209 increased numbers and proportions of activated CD8+ T cells in post-COVID samples persisted,
210 even at this longer time point of follow up in comparison to cohort one (median 101 days versus
211 68 days) (**Figure 4**). There were no changes in activated CD4+ T cells seen, while convalescent
212 COVID patients had an increased proportion of effector CD8+ T cells. The significant differences
213 in proportion of intermediate monocytes were not seen in this cohort, with all monocyte
214 populations returning to levels similar to controls (**Supplemental Figure 4**).

215 **Figure 4: Lymphocyte subsets in convalescent COVID-19**



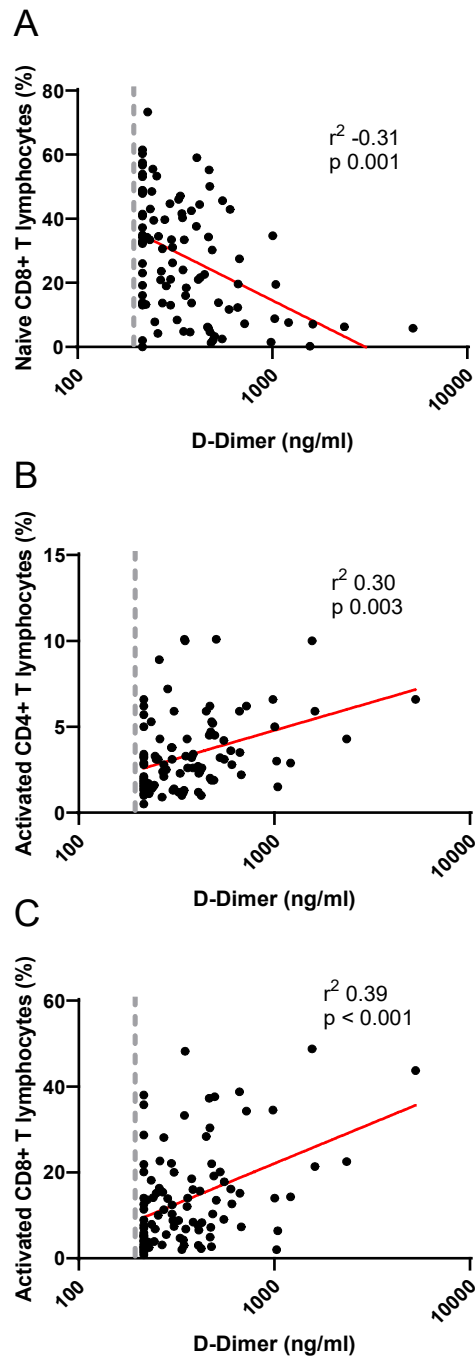
216

217 **Figure 4:** Convalescent lymphocyte subsets from n=71 patients recovered from COVID-19
 218 versus n=40 uninfected controls. **(A)** CD4+ T cells, showing proportion and absolute number of
 219 naïve and activated CD4+ T cells **(B)** CD8+ T cells, showing proportion and absolute number of
 220 naïve, activated and effector CD8+ T cells, Wilcoxon rank-sum test used to assess differences. *
 221 p < 0.05, ** p < 0.01, *** p < 0.001, ns = Not Significant

222 Interestingly, further interrogation of these convalescent T cell results revealed that there was a
223 relationship between these T cell changes and the persistent elevation in D-Dimer levels that we
224 noted in our earlier analysis. Twenty patients (20/111, 18%) had an elevated D-dimer at time of
225 assessment. D-dimer levels were negatively associated with the proportion of naïve CD8+ T cells
226 (**Figure 5A**), while they were positively associated with activated CD4+ T cells (**Figure 5B**) and
227 activated CD8+ T cells (**Figure 5C**). However, there was no relationship between D-dimer levels
228 and naïve CD4+ T cells ($r^2=-0.15$, $p=0.13$) or effector CD8+ T cells ($r^2=0.12$, $p=0.24$).

229

230 **Figure 5: Relationship between D-dimers and lymphocyte subsets in convalescent COVID-19.**



231

232 **Figure 5:** Correlation between D-dimers and **(A)** naïve CD8+ T cells, **(B)** activated CD4+ T cells and
233 **(C)** activated CD8+ lymphocytes. D-dimer shown as log scale. Dashed vertical line represents
234 lower limit of detection for D-dimer assay. Correlation assessed by Pearson’s chi-squared test.

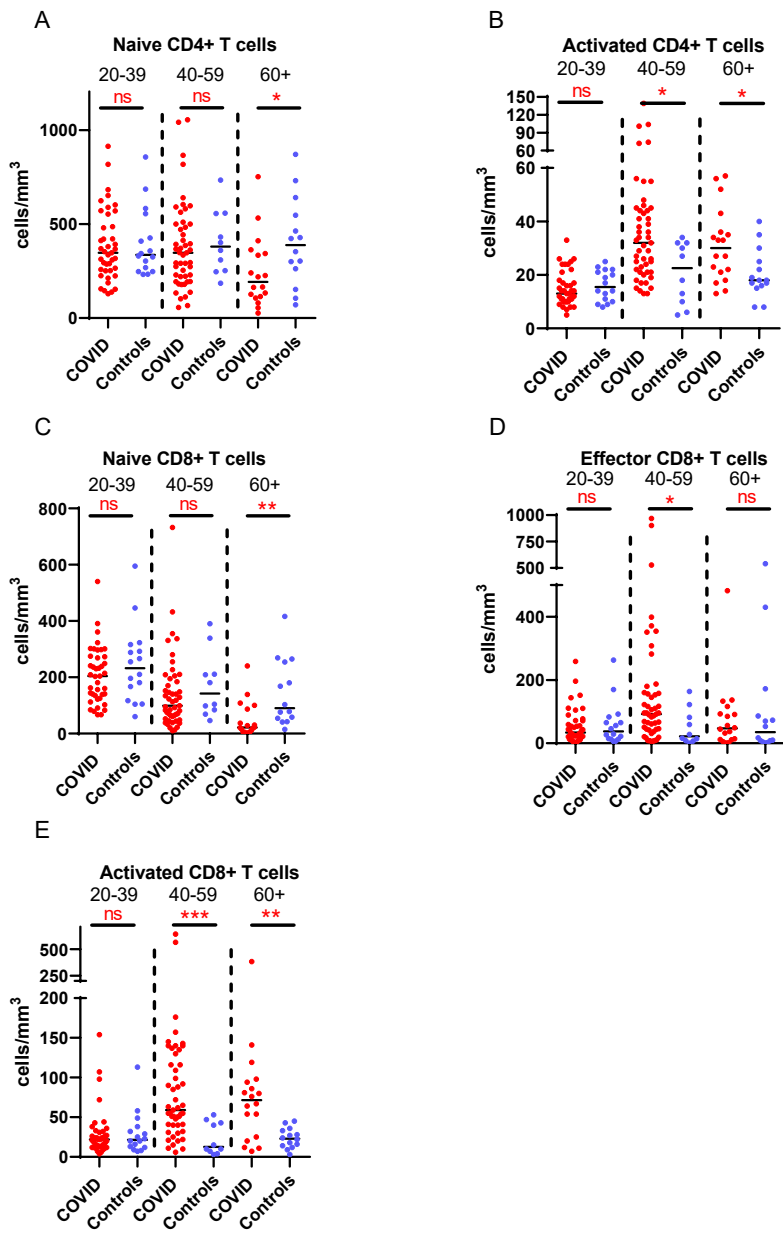
235 *Lymphocyte subset changes in convalescent COVID-19 are associated with increasing age*

236 Older patients have worse outcomes in acute SARS-CoV-2 infection, but little is known regarding
237 recovery of their immune system following infection. As we had noted interesting lymphocyte
238 abnormalities post-COVID, we further investigated if age influences any of the dynamic changes
239 T cell responses seen in convalescence. We stratified our convalescent patients into 20-year age
240 brackets: 20 – 39 (n=43), 40 – 59 (n=49) and 60 – 80 (n=19). There was no difference in time to
241 follow up between the three age groups ($z=1.5$, $p=0.47$). The older 60 – 80 cohort were more
242 likely to have been admitted during acute infection than the youngest ($z=4.62$, $p<0.001$) and 40
243 – 59 ($z=2.77$, $p=0.02$) cohorts. We also stratified our healthy cohort into identical age brackets:
244 20 – 39 (n=16), 40 – 59 (n=10), and 60 – 80 (n=14). There were distinct age-associated changes
245 seen in lymphoid populations in the convalescent cohort, with an age-associated decline in both
246 absolute number and proportions of naïve CD4+ and CD8+ cells and an age-associated increase
247 in activated CD4+ and CD8+ cells (**Supplemental Figure 5**). There were minor increases in effector
248 CD8+ T cells with age (**Supplemental Figure 5**). We also investigated disease-associated effects
249 by comparing these results to age-matched controls. There were distinct differences noted, with
250 the most dramatic being in the oldest cohort, with post-COVID individuals having reduced
251 number of naïve CD4+ and naïve CD8+ (**Figures 6A, 6C**) and increased number and proportion of
252 activated CD4+ and CD8+ cells (**Figures 6B, 6E**) compared to age-matched controls. There were
253 no differences between the age-matched controls and infected individuals in the youngest
254 cohort. The 40 – 59 age group showed increased number of effector CD8+ T cells (**Figure 6C**),
255 activated CD4+ and activated CD8+ T cells in comparison to uninfected controls, with no
256 differences in naïve T cell counts. These changes were mirrored in the proportion of T cell

257 populations across age groups (**Supplemental Figure 6**). These data suggest that in those >60
258 years of age the post-COVID changes in T cells persist longer than in younger individuals.

259

260 **Figure 6: Age-associated changes in convalescent lymphocyte subsets versus age-matched**
 261 **controls.**



262
 263 **Figure 6:** Lymphocyte immunophenotyping of convalescent COVID patients (n=111) broken down
 264 by age with age-matched controls, showing absolute number of **(A)** naïve CD4+ T cells and **(B)**
 265 activated CD4+ T cells, and **(C)** naïve CD8+ T cells, **(D)** activated CD8+ T cells and **(E)** effector CD8+
 266 T cells. Differences assessed by Wilcoxon rank-sum test. * p <0.05, ** p <0.01, ***p<0.001, ns =
 267 Not Significant

268 *Persistent symptoms are independent of T cell immunophenotype following COVID-19 illness*

269 We have demonstrated the high prevalence of ill-health and the cardinal features of *long COVID*
270 in our cohort. Our analysis has also revealed persistent changes to T cells, most notably activated
271 CD8+ T cells, in the convalescent period following COVID-19. We finally wanted to investigate the
272 relationship between immunophenotyping parameters and subjective symptoms of fatigue, as
273 assessed by CFQ-11 score, and exercise tolerance, as assessed by performance on the 6MWT.
274 We used linear regression under unadjusted conditions and controlled for age, sex and clinical
275 frailty score in order to determine relationships. There were no associations between naïve CD4+,
276 naïve CD8+, effector CD8+, activated CD4+, or activated CD8+ T cells and fatigue score, distance
277 reached on the 6MWT or maximal MBS reported under any of the conditions examined (**Table 3,**
278 **Figure 7**). We also evaluated the association between physical health measures and classical,
279 intermediate and non-classical monocyte populations, given the intermediate monocyte
280 differences we saw at 68 days. There were no associations with monocyte populations
281 (**Supplemental Figure 7**).

282

283 **Table 3: No relationship between extended T cell subsets and symptoms of fatigue, dyspnoea or distance walked on the six-**
 284 **minute walk test post-COVID-19.**

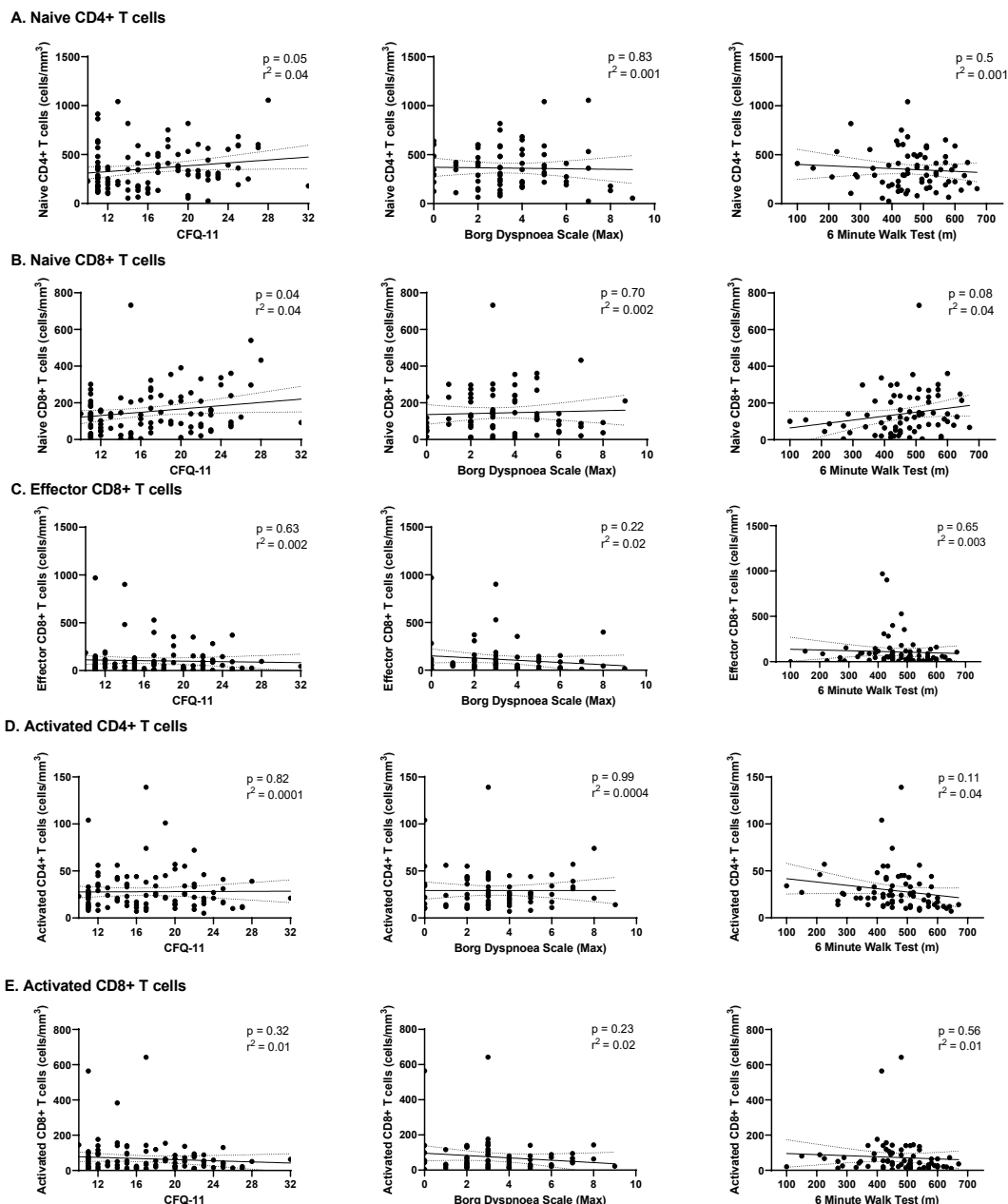
	CFQ-11				6MWT (meters)				Borg Dyspnoea Scale			
	Model 1		Model 2 (adj.)		Model 1		Model 2 (adj.)		Model 1		Model 2 (adj.)	
	β Coeff (95% CI)	P	Adj. β Coeff (95% CI)	p	β Coeff (95% CI)	p	Adj. β Coeff (95% CI)	p	β Coeff (95% CI)	p	Adj. β Coeff (95% CI)	p
Naïve CD4 Count	0.005 (0.00, 0.01)	0.046	0.004 (-0.001, 0.01)	0.07	-0.05 (-0.19, 0.09)	0.50	-0.14 (-0.26, -0.02)	0.02	-0.0002 (-0.003, 0.002)	0.83	-0.0002 (-0.003, 0.002)	0.89
Naïve CD8 Count	0.01 (0.001, 0.02)	0.04	0.01 (0.001, 0.02)	0.04	0.20 (-0.03, 0.42)	0.08	-0.10 (-0.34, 0.13)	0.39	0.001 (-0.003, 0.005)	0.70	0.003 (-0.002, 0.008)	0.21
Effector CD8 Count	-0.002 (-0.01, 0.01)	0.63	0.003 (-0.05, 0.05)	0.92	-0.04 (-0.20, 0.12)	0.65	0.01 (-0.13, 0.15)	0.85	-0.002 (-0.005, 0.001)	0.22	-0.002 (-0.004, 0.001)	0.23
Activated CD4 Count	0.04 (-0.69, 0.77)	0.82	-0.01 (-0.06, 0.04)	0.75	-1.04 (-2.31, 0.23)	0.11	-0.0002 (-1.19, 1.19)	0.99	-0.0001 (-0.02, 0.02)	0.99	-0.01 (-0.03, 0.02)	0.48
Activated CD8 Count	-0.01 (-0.02, 0.01)	0.32	-0.01 (-0.02, 0.004)	0.20	-0.08 (-0.35, 0.19)	0.56	0.09 (-0.16, 0.33)	0.48	-0.003 (-0.008, 0.002)	0.23	-0.004 (-0.01, 0.001)	0.10

285

286 Linear regression. CI; confidence interval. Model 1, unadjusted; Model 2, adjusted for age, sex, Clinical Frailty Scale and severity of
 287 acute COVID-19 illness. Bonferroni correction, statistical significance $p < 0.01$

288

289 **Figure 7: Relationships of lymphocyte subsets with physical health measures and D-dimers**



290
 291 **Figure 7:** Relationship with fatigue, perceived exertion and 6MWT distance with **(A)** naïve CD4+
 292 T cells, **(B)** naïve CD8+ T cells, **(C)** effector CD8+ T cells, **(D)** activated CD4+ T cells and **(E)** activated
 293 CD8+ T cells. Relationships assessed using linear regression. CFQ-11 = Chalder Fatigue
 294 Questionnaire-11

295

296 These findings suggest that persistent ill-health and fatigue are frequently reported at a medium-
297 term interval following COVID-19, but they are independent of any persistent changes to the
298 immune parameters investigated in this study.

299

300 **Discussion**

301 We show evidence of persistent abnormalities of T cell responses in the aftermath of acute SARS-
302 CoV-2 infection that are unrelated to initial disease severity across the spectrum of disease, with
303 severity ranging from mild disease managed in the community to requirement for ICU care.
304 Specifically, we demonstrate an expansion of effector CD8+ T cells, activated CD4+ and CD8+ T
305 cell populations and reduction in naïve CD4+ and CD8+ T cells at ten weeks following acute
306 infection. Further analysis of COVID convalescence found that the expansion of activated CD8+ T
307 lymphocytes is still evident at a median of 101 days following infection. Equally notable is the
308 recovery post-COVID of myeloid populations to levels similar to healthy controls. While we report
309 persistent expansion of intermediate monocytes at 68 days, all monocyte populations have
310 normalized at 101 days. Given that the myeloid compartment is significantly altered in acute
311 infection, it is reassuring to see resolution of these changes at convalescence. Similarly, routine
312 clinical measures of inflammation and coagulation also return to normal levels. The exception to
313 this is D-dimers, which remain elevated in 18% of patients. Persistent ill-health is common in our
314 cohort, with almost two-thirds (64%) not feeling back to full health, and fatigue seen in more
315 than half the cohort. These are the cardinal features described in *long COVID*. However, these
316 findings of persistent ill-health are independent of immunological parameters measured.

317 While persistent expansion of activated T lymphocytes are described in the setting of chronic
318 viral infection, they are less commonly seen following infection by an acute pathogen (19).
319 However, persistent activation of CD8+ T cells has been reported in the setting of parvovirus B19
320 infection, as well as the aftermath of severe influenza A H7N9 infection (20, 21). Interestingly, we
321 demonstrate that D-dimer levels are closely associated with both activated CD4 and CD8

322 lymphocyte counts. This persistent elevation of D-dimers mirrors early reports from elsewhere
323 (22). We now report that the elevations in D-dimers is associated with increased levels of
324 activated T lymphocytes and reduced levels of naïve T lymphocytes. Potential mechanisms for
325 this include persistent endothelial dysfunction following resolution of infection, as well as the
326 degradation of extra-vascular sites of coagulation (23, 24). D-dimers have also been shown to be
327 markers of crosstalk between the coagulation system and adaptive immune system in chronic
328 viral infection such as HIV (25). The data we present here highlight the need for further
329 investigations of such crosstalk in the context of COVID-19.

330 One of the most striking findings was that these T cell-specific changes are most marked in older
331 >60-year-old participants, with persistent abnormalities across naïve and activated CD4+ and
332 CD8+ T cells, while those aged <40 show complete resolution of these changes. While age is
333 known to affect immune recovery in treated chronic infections such as HIV, there is relatively
334 little known about ageing and immune recovery following acute viral infections (26). The ageing
335 immune system has been implicated in the ageing-associated mortality rate in acute COVID-19
336 (27). T cell responses are crucial in modulating the immune response and preventing host damage
337 in acute viral infections such as influenza (28). Impairment of the adaptive immune system with
338 age, in particular immunosenescence, has been well-described (29). This is of particular
339 importance when considering the impact of lasting immunity in previously infected older
340 individuals and how little is known about adaptive immune responses in this population in the
341 context of COVID-19. The ability to sustain an effective memory immune response to infection
342 has been shown to diminish with age (30). A recent study found there was a general decline in
343 recognition of viral-associated peptides between the ages of 42 and 58 in a pre-pandemic cohort

344 (31). Another important consideration regarding our results is how such alterations may impact
345 on the potential long-term efficacy of vaccination of older cohorts, where responses have
346 previously been shown to be highly variable (32, 33). These results emphasize the importance of
347 further study into activation and resolution of immune responses in SARS-CoV-2 infection in older
348 individuals.

349 Interestingly, we found the cardinal features of *long COVID*, namely the presence of fatigue and
350 reduced exercise tolerance, had no association with lymphocyte subset changes. Nonetheless,
351 we demonstrate a large burden of fatigue, breathlessness, and ill-health in this cohort. This is
352 reflective of previous clinical descriptors of *long COVID* cohorts. Our group have previously
353 reported a high prevalence of post-COVID fatigue, which was independent of severity of initial
354 infection (34). These findings have been replicated in subsequent studies showing persistent ill-
355 health in young, otherwise healthy individuals (35). Our findings further highlight the difficulty in
356 establishing a reliable biomarker for ongoing ill-health following COVID-19 infection.

357 While it is likely that the proportion of those reporting persistent ill-health is likely confounded
358 by their increased likelihood to attend for follow-up, it demonstrates a significant burden of
359 morbidity. It will be illuminating to follow the prevalence of autoimmune disease in the general
360 population in the post-pandemic era. This is particularly relevant given the concept of bystander
361 T cell activation during viral infection. Bystander T cell recruitment has been described in both
362 hepatitis A and influenza A infection (36, 37). While the activation of such T cells are considered
363 beneficial in the control of acute infection and protective immunity, such non-specific immune
364 activation has been associated with immunopathology, or host damage (38). Indeed, activation
365 of both CD4+ and CD8+ lymphocytes in acute infection has been associated with the

366 development of a wide array of autoimmune conditions (39, 40). The potential for SARS-CoV-2
367 to cause immunopathology has been proposed as a mechanism behind multisystem
368 inflammatory syndrome in children (MIS-C), a new paediatric inflammatory condition associated
369 with COVID-19 (41). Autoantibodies against multiple cell types have been demonstrated in this
370 condition, while immune complex formation has also been implicated (42, 43). Furthermore, this
371 is similar to the immunopathology seen in other post-infectious autoimmune conditions, such as
372 Kawasaki disease (44). Pro-thrombotic autoantibody generation has also been described in acute
373 COVID-19 in adult populations, which would link both activated T lymphocytes and elevated D-
374 dimers (45). D-dimer levels have also been reported to correlate with CD8+ lymphocytes in MIS-
375 C (46). Further characterisation of these persistently activated cells is warranted to inform
376 assessment of their functional consequences.

377 Our study has several limitations worth noting. It is a single-centre study at a single medium-term
378 interval. However, we have two separate convalescent time points, in addition to data from acute
379 illness. This allows a disease and recovery trajectory to be plotted. We have loss to follow-up,
380 with 31% of patients attending their outpatient appointments. This is a common challenge seen
381 in research conducted in clinical ambulatory care settings. However, our cohort may have an
382 increased burden of symptoms following COVID-19 than that seen in the entire affected
383 population.

384 The results reported here provide insights into the immune consequences of SARS-CoV-2
385 infection, as well as the age effects on immune recovery. It provides possible mechanisms for
386 immunopathology and should inform the design of ongoing studies into the immunological
387 consequences of COVID-19 and associations with long COVID clinical features.

388 In conclusion, we report several key findings that add significant knowledge regarding resolution
389 of the immunological responses in the convalescent period of COVID-19 infection. Encouragingly,
390 our matched longitudinal patient data shows that all cell counts return towards levels of healthy
391 controls. Although there are persistent lymphocyte and monocyte abnormalities at 68 days,
392 these had resolved by 101 days post infection with the exception of a persistent expansion of
393 activated CD8+ T cells. We show that age, while being strongly associated with poor outcome in
394 acute COVID, is also strongly associated with impaired immunological recovery in convalescence.
395 The association of D-dimer levels with activated lymphocytes provide a potential basis for
396 persistent immune dysfunction following SARS-CoV-2 infection. While we demonstrate the
397 burden of persistent ill-health following SARS-CoV-2 infection, this was not associated with
398 immunological changes.

399

400 **Methods**

401 *Study setting and participants*

402 This study was carried out in the post-COVID-19 clinic at St James's Hospital, Dublin, Ireland.
403 Appointments were offered to all individuals with a positive SARS-CoV-2 nasopharyngeal swab
404 PCR at our institution between March and May 2020, including both those hospitalised and those
405 managed in the community during their acute illness. Severity of initial infection was graded as
406 mild (did not require hospitalisation), moderate (required hospitalisation) or severe (required
407 intensive care unit admission). Appointments were offered at a minimum of six weeks following
408 resolution of symptoms or hospital discharge. Outpatient appointments were not offered to
409 residents in long term care facilities.

410 *Inflammatory makers and immunophenotyping*

411 Blood sampling was incorporated as part of routine phlebotomy occurring on the same day as
412 study participation. An identical sampling and analytic pipeline was implemented on the cohort
413 during acute infection. IL-6, IL-8, IL-1 β , TNF- α and soluble CD25 levels were measured in serum
414 by ELISA (Ella ProteinSimple). Immunophenotyping by flow cytometry was carried out on fresh
415 whole EDTA-treated blood and samples were analysed on a FACS Canto II Flow Cytometer (BD
416 San Jose USA), using BD DIVA v8 and FLO Jo v10 software. BD FACSCanto™ clinical software was
417 used for acquisition of BD Multitest™ 6-colour TBNK and TruCount tubes. All other
418 immunophenotyping samples were analysed using BD DIVA v8 and FLO Jo v10 software
419 **(Supplemental Figure 8)**. The frequency and absolute cell counts of CD45+ T cells (CD3+, CD4+
420 and CD8+), B cells (CD19+) and NK cells (CD16+CD56+) were generated by BD Multitest™ 6-colour

421 TBNK and TruCount method. Naive (CD27+) and effector (CD27-) CD4+ or CD8+ T cells were
422 characterised for expression of CD27, CD45RA and CD197. T cell activation was assessed by CD38
423 and HLA-DR expression. Absolute cell counts for naïve effector and activated T cells were
424 calculated using the absolute frequencies of parent populations acquired from the BD TruCount
425 tubes. Cell phenotyping assays were validated and accredited in line with ISO15189 standards.
426 Classical, intermediate and non-classical monocytes were characterised by CD14 and CD16
427 expression. The maturation status of CD16+ neutrophils was evaluated by CD10 expression.
428 Antibodies used in flow cytometry phenotyping are in **Supplemental Table 1**. The reference
429 ranges for all assays were generated using a panel of 40 healthy controls and were established in
430 a pre-pandemic setting.

431 *Physical Health Assessment*

432 Physical health assessment occurred at time of outpatient assessment and convalescent
433 immunophenotyping. Patients were asked a binary question as to whether or not they felt back
434 to full health. Fatigue was assessed using the Chalder Fatigue Scale (CFQ-11) (47, 48). Participants
435 answer eleven questions in relation to physical and psychological fatigue, with reference to the
436 past month in comparison to their pre-COVID-19 baseline. A Likert scale (0-3) is used to measure
437 responses, constructing a total score ranging from 0 to 33 (49).

438 The CFQ-11 also allows differentiation of “cases” vs “non-cases” where scores 0 and 1 (*Better
439 than usual/No worse than usual*) are scored a zero and scores 2 and 3 (*Worse than usual/Much
440 worse than usual*) are scored a 1 (bimodal scoring). Those with a total score of four or greater are

441 considered to meet the criteria for fatigue. This latter method for *caseness* resembles other
442 fatigue questionnaires (49-52).

443 To assess cardiopulmonary and musculoskeletal function, a 6MWT was used, with total distance
444 covered recorded (53, 54). The MBS, widely used in both healthy and diseased states to analyse
445 exertion during submaximal exercise, assessed perceived exertion during the 6MWT (range 0 -
446 10) (55, 56).

447 *Statistical analysis*

448 All statistical analysis was carried out using STATA v15.0 (Texas, USA) and statistical significance
449 considered $p < 0.05$. Descriptive statistics are reported as means with standard deviations (SD)
450 and median with interquartile ranges (IQR) as appropriate.

451 Between-group differences were assessed using t-tests, Wilcoxon rank-sum and chi-square tests
452 according to underlying data type and distribution. Paired analysis of laboratory parameters and
453 immune cell populations were carried out using Wilcoxon sign-rank test. Linear regression was
454 used to model the relationship between immune cell parameters (independent variable) and
455 CFQ-11/6MWT (distance covered in metres) / MBS score using separate linear models. These
456 were performed unadjusted in the first instance (Model 1), followed by adjustment for age, sex,
457 and severity of initial infection (Model 2). Results are presented as β coefficients with
458 corresponding 95% confidence intervals (Cis) and p values. Correlation analysis between
459 parameters was performed using Spearman correlation tests.

460 *Study approval*

461 Ethical approval for the current study was obtained from the Tallaght University Hospital
462 (TUH)/St James's Hospital (SJH) Joint Research Ethics Committee (reference REC 2020-03).
463 Informed consent was obtained from all participants in the current study in accordance with the
464 Declaration of Helsinki (57).

465 **Author contributions**

466 Conceptualisation: LT, AHD, COF, CNC, NMB and C.N.C.; Methodology: LT, AHD, AN, RK, DH, MG,
467 JDo, KOB, PF, NMB and NC. Formal Analysis: LT, AHD, JDu and NMB Investigation: LT, AN, RK, DH,
468 MG, JDo, KOB, CBa, PN, IML; Resources: JDu, IML, CBe, COF, CNC, NMB and NC.; Data Curation:
469 LT, AHD, AN, RK, JDu and NC; Writing-Original Draft: LT, AHD, CNC, NMB and NC; Writing-Review
470 & Editing: AN, JDu, IML, PF, CBe, COF, CNC, NMB and NC ; Visualisation: LT, AHD, AN, RK, DH, MG
471 and NMB; Supervision: IML, CBe, COF, CNC, NMB and NC; Funding Acquisition: LT and NC

472 **Acknowledgements**

473 We would like to thank all patients involved in the study, the support provided by the Clinical
474 Research Facility at Saint James's Hospital, the STAR-Bioresource team, as well as the work of the
475 clinicians and multi-disciplinary team in the outpatient clinic.

476 **Funding**

477 LT has been awarded the Irish Clinical Academic Training (ICAT) Programme, supported by the
478 Wellcome Trust and the Health Research Board (Grant Number 203930/B/16/Z), the Health
479 Service Executive, National Doctors Training and Planning and the Health and Social Care,
480 Research and Development Division, Northern Ireland (<https://icatprogramme.org/>). NC is part-
481 funded by a Science Foundation Ireland (SFI) grant, Grant Code 20/SPP/3685. The funders had

482 no role in study design, data collection and analysis, decision to publish, or preparation of the
483 manuscript.

484 **Competing Interests**

485 The authors have no competing interests to declare.

486

487 **References**

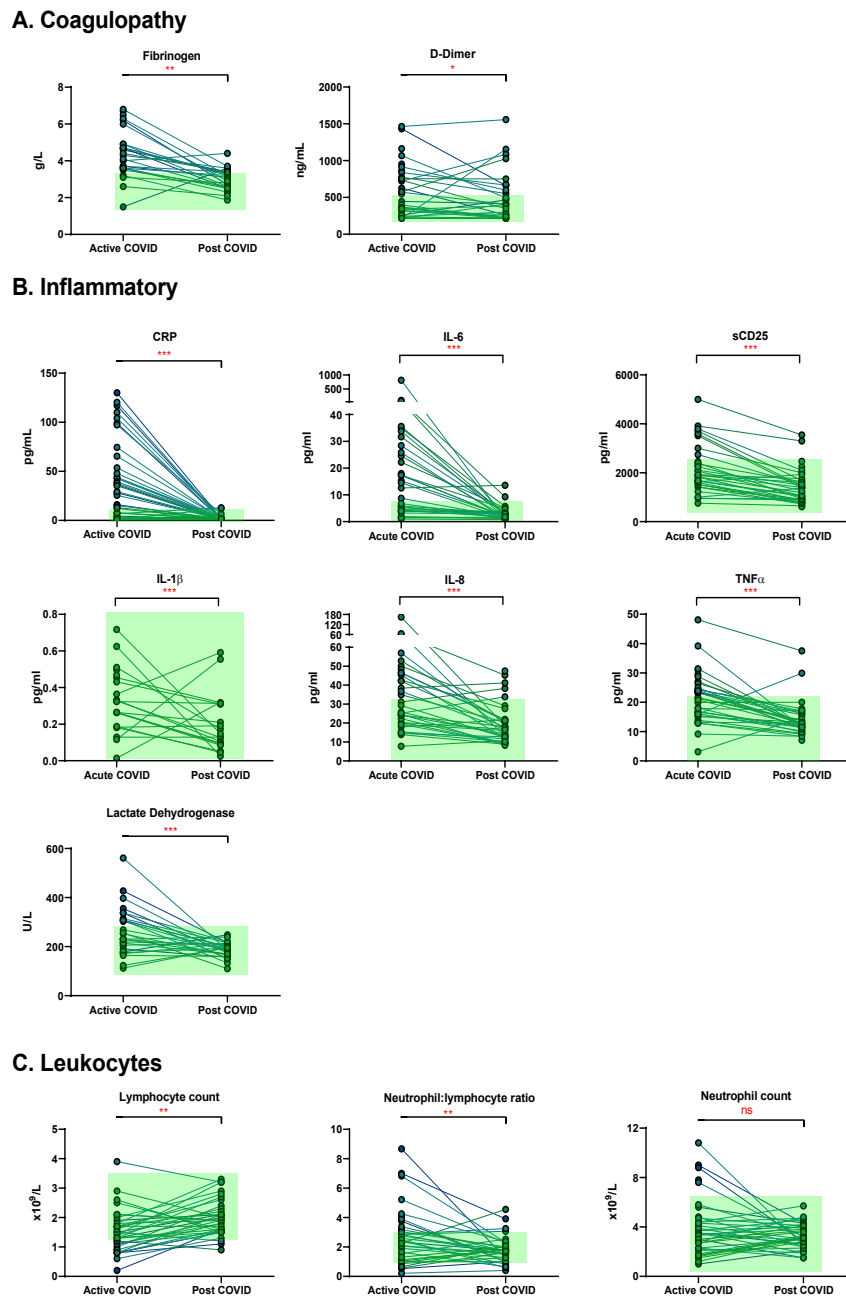
- 488 1. Zhou F, Yu T, Du R, Fan G, Liu Y, Liu Z, et al. Clinical course and risk factors for mortality of adult
489 inpatients with COVID-19 in Wuhan, China: a retrospective cohort study. *The lancet*. 2020.
- 490 2. Kerr C, Hughes G, Mckenna L, and Bergin C. Prevalence of smell and taste dysfunction in a
491 cohort of CoVID19 outpatients managed through remote consultation from a large urban
492 teaching hospital in Dublin, Ireland. *Infection Prevention in Practice*. 2020:100076.
- 493 3. Chen N, Zhou M, Dong X, Qu J, Gong F, Han Y, et al. Epidemiological and clinical characteristics
494 of 99 cases of 2019 novel coronavirus pneumonia in Wuhan, China: a descriptive study. *The*
495 *Lancet*. 2020;395(10223):507-13.
- 496 4. Mallapaty S. The coronavirus is most deadly if you are older and male-new data reveal the risks.
497 *Nature*. 2020:16-7.
- 498 5. Mahase E. British Medical Journal Publishing Group; 2020.
- 499 6. Zhou Y, Fu B, Zheng X, Wang D, and Zhao C. Pathogenic T cells and inflammatory monocytes
500 incite inflammatory storm in severe COVID-19 patients. *National Science Review*. 2020.
- 501 7. Fogarty H, Townsend L, Ni Cheallaigh C, Bergin C, Martin-Loeches I, Browne P, et al. COVID-19
502 Coagulopathy in Caucasian patients. *British Journal of Haematology*. 2020.
- 503 8. Schulte-Schrepping J, Reusch N, Paclik D, Baßler K, Schlickeiser S, Zhang B, et al. Severe COVID-
504 19 is marked by a dysregulated myeloid cell compartment. *Cell*. 2020;182(6):1419-40. e23.
- 505 9. Carissimo G, Xu W, Kwok I, Abdad MY, Chan Y-H, Fong S-W, et al. Whole blood
506 immunophenotyping uncovers immature neutrophil-to-VD2 T-cell ratio as an early marker for
507 severe COVID-19. *Nature Communications*. 2020;11(1):1-12.
- 508 10. Giamarellos-Bourboulis EJ, Netea MG, Rovina N, Akinosoglou K, Antoniadou A, Antonakos N, et
509 al. Complex immune dysregulation in COVID-19 patients with severe respiratory failure. *Cell host*
510 *& microbe*. 2020.
- 511 11. Laing AG, Lorenc A, Del Barrio IDM, Das A, Fish M, Monin L, et al. A dynamic COVID-19 immune
512 signature includes associations with poor prognosis. *Nature medicine*. 2020;26(10):1623-35.
- 513 12. Greenhalgh T, Knight M, A'Court C, Buxton M, and Husain L. Management of post-acute covid-
514 19 in primary care. *BMJ*. 2020;370:m3026.
- 515 13. Files JK, Boppana S, Perez MD, Sarkar S, Lowman KE, Qin K, et al. Sustained cellular immune
516 dysregulation in individuals recovering from SARS-CoV-2 infection. *The Journal of Clinical*
517 *Investigation*. 2020.
- 518 14. Assaf G, Davis H, McCorkell L, Wei H, O'Neill B, and Akrami A. What Does COVID-19 Recovery
519 Actually Look Like? An Analysis of the Prolonged COVID-19 Symptoms Survey by Patient-Led
520 Research Team. London, UK: The COVID-19 Body Politic Slack Group; 2020. *Contract*. 2020(2).
- 521 15. Carfi A, Bernabei R, and Landi F. Persistent symptoms in patients after acute COVID-19. *JAMA*.
522 2020.
- 523 16. COVID GA, and Group P-ACS. Post-COVID-19 global health strategies: the need for an
524 interdisciplinary approach. *Aging Clinical and Experimental Research*.1.
- 525 17. Herridge MS, Cheung AM, Tansey CM, Matte-Martyn A, Diaz-Granados N, Al-Saidi F, et al. One-
526 year outcomes in survivors of the acute respiratory distress syndrome. *New England Journal of*
527 *Medicine*. 2003;348(8):683-93.
- 528 18. Enright PL, and Sherrill DL. Reference equations for the six-minute walk in healthy adults.
529 *American journal of respiratory and critical care medicine*. 1998;158(5):1384-7.
- 530 19. Saeidi A, Zandi K, Cheok YY, Saeidi H, Wong WF, Lee CYQ, et al. T-cell exhaustion in chronic
531 infections: reversing the state of exhaustion and reinvigorating optimal protective immune
532 responses. *Frontiers in immunology*. 2018;9:2569.

- 533 20. Isa A, Kasprowicz V, Norbeck O, Loughry A, Jeffery K, Broliden K, et al. Prolonged activation of
534 virus-specific CD8+ T cells after acute B19 infection. *PLoS Med.* 2005;2(12):e343.
- 535 21. Zhao M, Chen J, Tan S, Dong T, Jiang H, Zheng J, et al. Prolonged evolution of virus-specific
536 memory T cell immunity after severe avian influenza A (H7N9) virus infection. *Journal of*
537 *virology.* 2018;92(17).
- 538 22. Mandal S, Barnett J, Brill SE, Brown JS, Denneny EK, Hare SS, et al. ‘Long-COVID’: a cross-
539 sectional study of persisting symptoms, biomarker and imaging abnormalities following
540 hospitalisation for COVID-19. *Thorax.* 2020.
- 541 23. Gavriilaki E, Anyfanti P, Gavriilaki M, Lazaridis A, Douma S, and Gkaliagkousi E. Endothelial
542 Dysfunction in COVID-19: Lessons Learned from Coronaviruses. *Current hypertension reports.*
543 2020;22(9):1-12.
- 544 24. Thachil J. All those D-dimers in COVID-19. *Journal of Thrombosis and Haemostasis.* 2020.
- 545 25. Hurley A, Smith M, Karpova T, Hasley RB, Belkina N, Shaw S, et al. Enhanced effector function of
546 CD8+ T cells from healthy controls and HIV-infected patients occurs through thrombin activation
547 of protease-activated receptor 1. *The Journal of infectious diseases.* 2013;207(4):638-50.
- 548 26. Kasahara TM, Hygino J, Andrade RM, Monteiro C, Sacramento PM, Andrade AF, et al. Poor
549 functional immune recovery in aged HIV-1-infected patients following successfully treatment
550 with antiretroviral therapy. *Human Immunology.* 2015;76(10):701-10.
- 551 27. Chen J, Kelley WJ, and Goldstein DR. Role of Aging and the Immune Response to Respiratory
552 Viral Infections: Potential Implications for COVID-19. *The Journal of Immunology.* 2020.
- 553 28. Sun J, and Braciale TJ. Role of T cell immunity in recovery from influenza virus infection. *Current*
554 *opinion in virology.* 2013;3(4):425-9.
- 555 29. Leng J, and Goldstein DR. Impact of aging on viral infections. *Microbes and infection.*
556 2010;12(14-15):1120-4.
- 557 30. Woodland DL, and Blackman MA. Immunity and age: living in the past? *Trends in immunology.*
558 2006;27(7):303-7.
- 559 31. Shrock E, Fujimura E, Kula T, Timms RT, Lee I-H, Leng Y, et al. Viral epitope profiling of COVID-19
560 patients reveals cross-reactivity and correlates of severity. *Science.* 2020.
- 561 32. Crooke SN, Ovsyannikova IG, Poland GA, and Kennedy RB. Immunosenescence and human
562 vaccine immune responses. *Immunity & Ageing.* 2019;16(1):25.
- 563 33. Chen WH, Kozlovsky BF, Effros RB, Grubeck-Loebenstien B, Edelman R, and Sztejn MB.
564 Vaccination in the elderly: an immunological perspective. *Trends in immunology.*
565 2009;30(7):351-9.
- 566 34. Townsend L, Dyer AH, Jones K, Dunne J, Mooney A, Gaffney F, et al. Persistent fatigue following
567 SARS-CoV-2 infection is common and independent of severity of initial infection. *Plos one.*
568 2020;15(11):e0240784.
- 569 35. Tenforde MW, Kim SS, Lindsell CJ, Rose EB, Shapiro NI, Files DC, et al. Symptom duration and risk
570 factors for delayed return to usual health among outpatients with COVID-19 in a multistate
571 health care systems network—United States, March–June 2020. *Morbidity and Mortality Weekly*
572 *Report.* 2020;69(30):993.
- 573 36. Kim J, Chang D-Y, Lee HW, Lee H, Kim JH, Sung PS, et al. Innate-like cytotoxic function of
574 bystander-activated CD8+ T cells is associated with liver injury in acute hepatitis A. *Immunity.*
575 2018;48(1):161-73. e5.
- 576 37. Sandalova E, Laccabue D, Boni C, Tan AT, Fink K, Ooi EE, et al. Contribution of herpesvirus
577 specific CD8 T cells to anti-viral T cell response in humans. *PLoS Pathog.* 2010;6(8):e1001051.
- 578 38. Graham AL, Allen JE, and Read AF. Evolutionary causes and consequences of immunopathology.
579 *Annu Rev Ecol Evol Syst.* 2005;36:373-97.

- 580 39. Münz C, Lünemann JD, Getts MT, and Miller SD. Antiviral immune responses: triggers of or
581 triggered by autoimmunity? *Nature Reviews Immunology*. 2009;9(4):246-58.
- 582 40. van Aalst S, Ludwig IS, van der Zee R, van Eden W, and Broere F. Bystander activation of
583 irrelevant CD4+ T cells following antigen-specific vaccination occurs in the presence and absence
584 of adjuvant. *PLoS One*. 2017;12(5):e0177365.
- 585 41. Ahmed M, Advani S, Moreira A, Zoretic S, Martinez J, Chorath K, et al. Multisystem inflammatory
586 syndrome in children: A systematic review. *EClinicalMedicine*. 2020;26:100527.
- 587 42. Jiang L, Tang K, Levin M, Irfan O, Morris SK, Wilson K, et al. COVID-19 and multisystem
588 inflammatory syndrome in children and adolescents. *The Lancet Infectious Diseases*. 2020.
- 589 43. Gruber CN, Patel RS, Trachtman R, Lepow L, Amanat F, Krammer F, et al. Mapping systemic
590 inflammation and antibody responses in multisystem inflammatory syndrome in children (MIS-
591 C). *Cell*. 2020.
- 592 44. Menikou S, Langford PR, and Levin M. Kawasaki disease: the role of immune complexes
593 revisited. *Frontiers in immunology*. 2019;10:1156.
- 594 45. Zuo Y, Estes SK, Ali RA, Gandhi AA, Yalavarthi S, Shi H, et al. Prothrombotic autoantibodies in
595 serum from patients hospitalized with COVID-19. *Science Translational Medicine*. 2020.
- 596 46. Vella LA, Giles JR, Baxter AE, Oldridge DA, Diorio C, Kuri-Cervantes L, et al. Deep Immune
597 Profiling of MIS-C demonstrates marked but transient immune activation compared to adult and
598 pediatric COVID-19. *medRxiv*. 2020.
- 599 47. Butler S, Chalder T, Ron M, and Wessely S. Cognitive behaviour therapy in chronic fatigue
600 syndrome. *Journal of Neurology, Neurosurgery & Psychiatry*. 1991;54(2):153-8.
- 601 48. Chalder T, Berelowitz G, Pawlikowska T, Watts L, Wessely S, Wright D, et al. Development of a
602 fatigue scale. *Journal of psychosomatic research*. 1993;37(2):147-53.
- 603 49. Jackson C. The Chalder fatigue scale (CFQ 11). *Occupational Medicine*. 2015;65(1):86-.
- 604 50. Morriss R, Wearden A, and Mullis R. Exploring the validity of the Chalder Fatigue scale in chronic
605 fatigue syndrome. *Journal of psychosomatic research*. 1998;45(5):411-7.
- 606 51. Loge JH, Ekeberg Ø, and Kaasa S. Fatigue in the general Norwegian population: normative data
607 and associations. *Journal of psychosomatic research*. 1998;45(1):53-65.
- 608 52. Jackson C. The general health questionnaire. *Occupational medicine*. 2007;57(1):79-.
- 609 53. Weisman IM, and Zeballos RJ. Clinical exercise testing. *Clinics in chest medicine*. 2001;22(4):679-
610 701.
- 611 54. Laboratories ACOPsfCPF. ATS statement: guidelines for the six-minute walk test. *Am J Respir Crit
612 Care Med*. 2002;166:111-7.
- 613 55. Borg E, Borg G, Larsson K, Letzter M, and Sundblad BM. An index for breathlessness and leg
614 fatigue. *Scandinavian journal of medicine & science in sports*. 2010;20(4):644-50.
- 615 56. Bausewein C, Farquhar M, Booth S, Gysels M, and Higginson I. Measurement of breathlessness
616 in advanced disease: a systematic review. *Respiratory medicine*. 2007;101(3):399-410.
- 617 57. Association WM. World Medical Association Declaration of Helsinki. Ethical principles for
618 medical research involving human subjects. *Bulletin of the World Health Organization*.
619 2001;79(4):373.

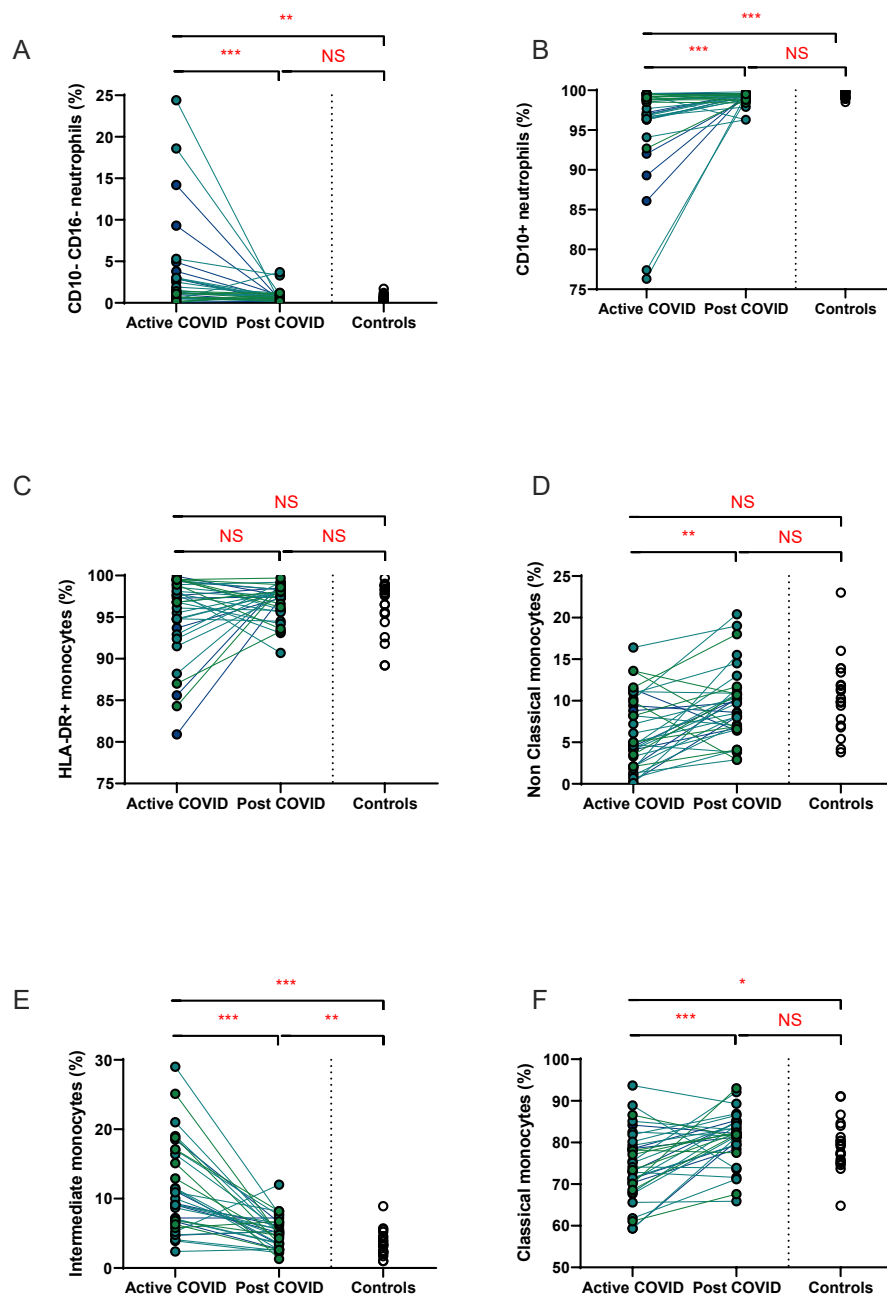
620

621



623

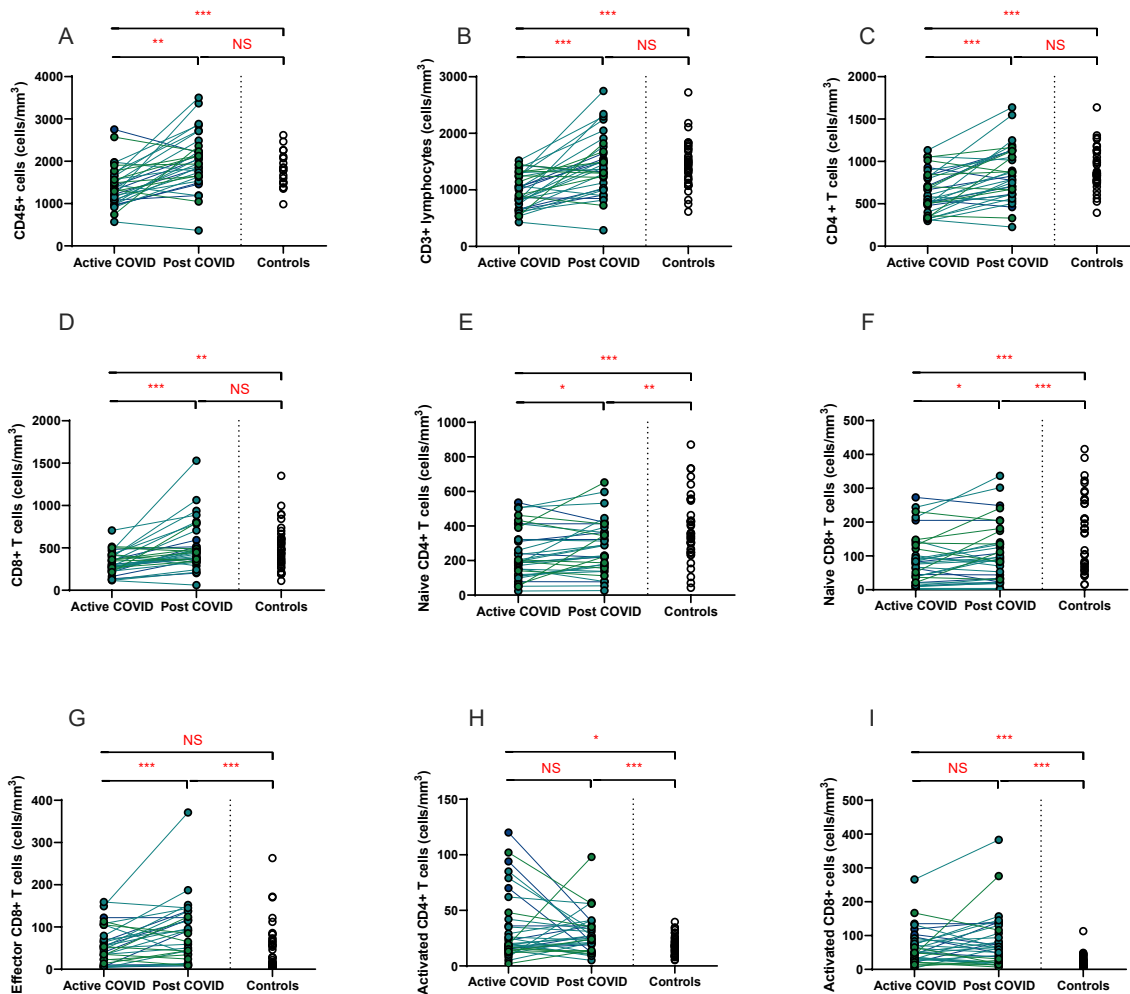
624 **Figure 1: Matched results of n=40 patients from acute to convalescent (median 68 days) for:**
 625 **(A) Coagulopathy (fibrinogen, D-dimer) (B) Inflammatory (CRP, IL-6, sCD25, IL-1 β , IL-8, TNF α ,**
 626 **LDH) (C) Cell turnover (lymphocytes, neutrophil: lymphocyte ratio, neutrophils). Shaded areas**
 627 **show normal ranges for each measure. Differences assessed by Wilcoxon signed-rank test. * p**
 628 **<0.05, ** p <0.01, ***p<0.001, NS = Not Significant**



630

631 **Figure 2: Myeloid populations from acute to convalescent COVID-19.** Matched peripheral whole
 632 blood myeloid cell proportions from n=40 patients recovered from COVID-19 versus uninfected
 633 controls (n=20). **(A)** CD10-CD16- immature neutrophils **(B)** CD10+ neutrophils **(C)** HLA-DR+
 634 monocytes **(D)** non-classical monocytes **(E)** intermediate monocytes **(F)** classical monocytes.
 635 Differences assessed using Wilcoxon rank-sum (unpaired) and Wilcoxon sign-rank (paired) tests.
 636 * p < 0.05, ** p < 0.01, *** p < 0.001, NS = Not Significant

637 **Figure 3**



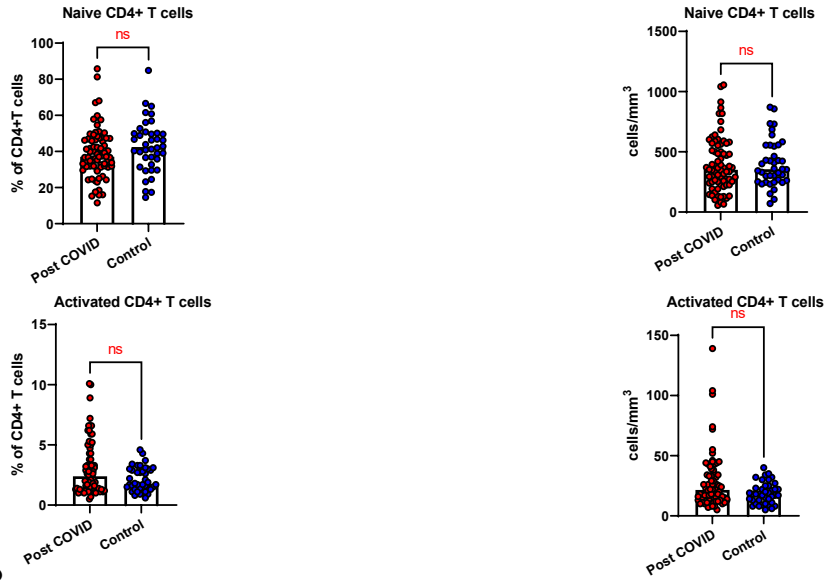
638

639

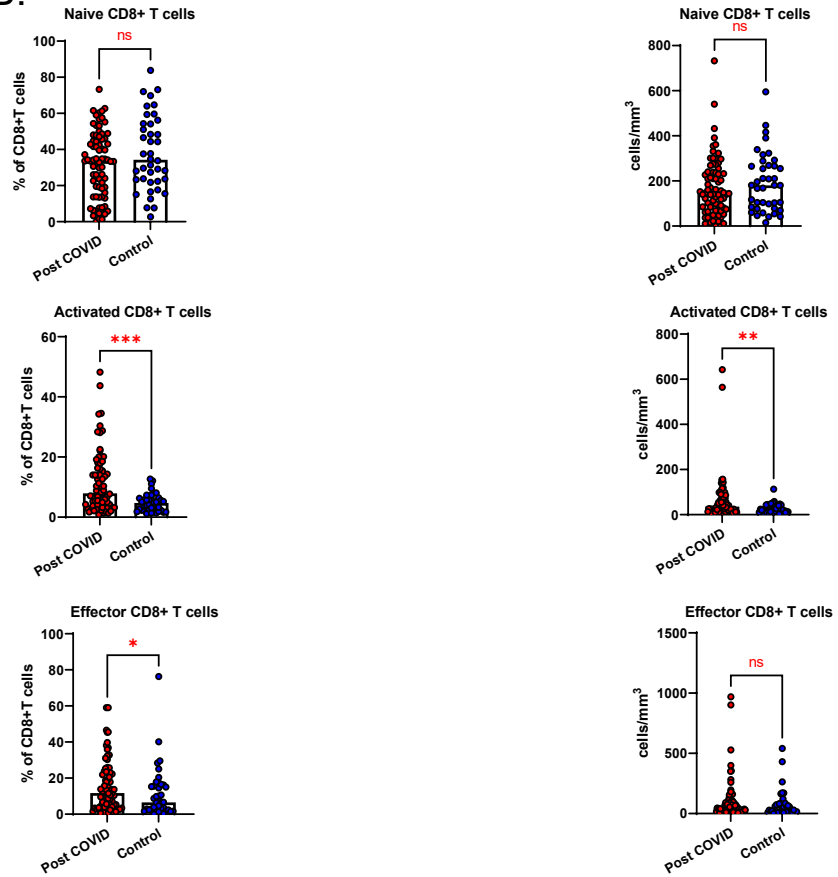
640 **Figure 3: Lymphocyte subsets from acute to convalescent COVID-19.** Matched peripheral whole
 641 blood lymphoid cell counts from n=40 patients recovered from COVID-19 versus uninfected
 642 controls (n=40). **(A)** CD45+ immune cells **(B)** CD3+ lymphocytes **(C)** CD4+ T cells **(D)** CD8+ T cells
 643 **(E)** naïve CD4+ T cells **(F)** naïve CD8+ T cells **(G)** effector CD8+ T cells **(H)** activated CD4+ T cells **(I)**
 644 activated CD8+ T cells. Differences assessed using Wilcoxon rank-sum (unpaired) and Wilcoxon
 645 sign-rank (paired) tests. * p < 0.05, ** p < 0.01, *** p < 0.001, NS = Not Significant

646

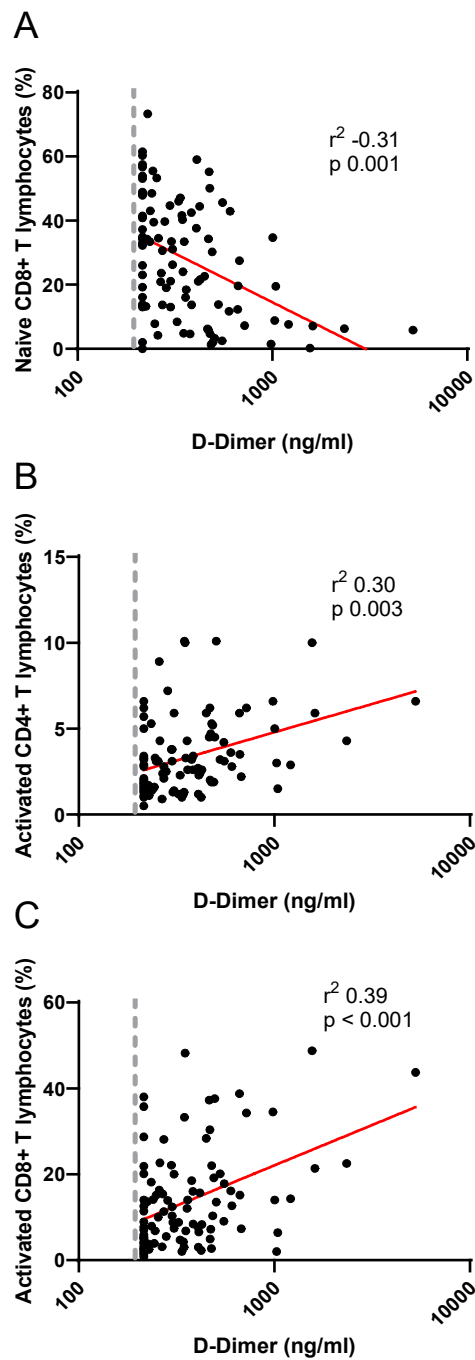
A.



B.



649 **Figure 4: Lymphocyte subsets in convalescent COVID-19.** Convalescent lymphocyte subsets from
650 n=71 patients recovered from COVID-19 versus n=40 uninfected controls. **(A)** CD4+ T cells,
651 showing proportion and absolute number of naïve and activated CD4+ T cells **(B)** CD8+ T cells,
652 showing proportion and absolute number of naïve, activated and effector CD8+ T cells, Wilcoxon
653 rank-sum test used to assess differences. * p <0.05, ** p <0.01, ***p<0.001, NS = Not Significant



655

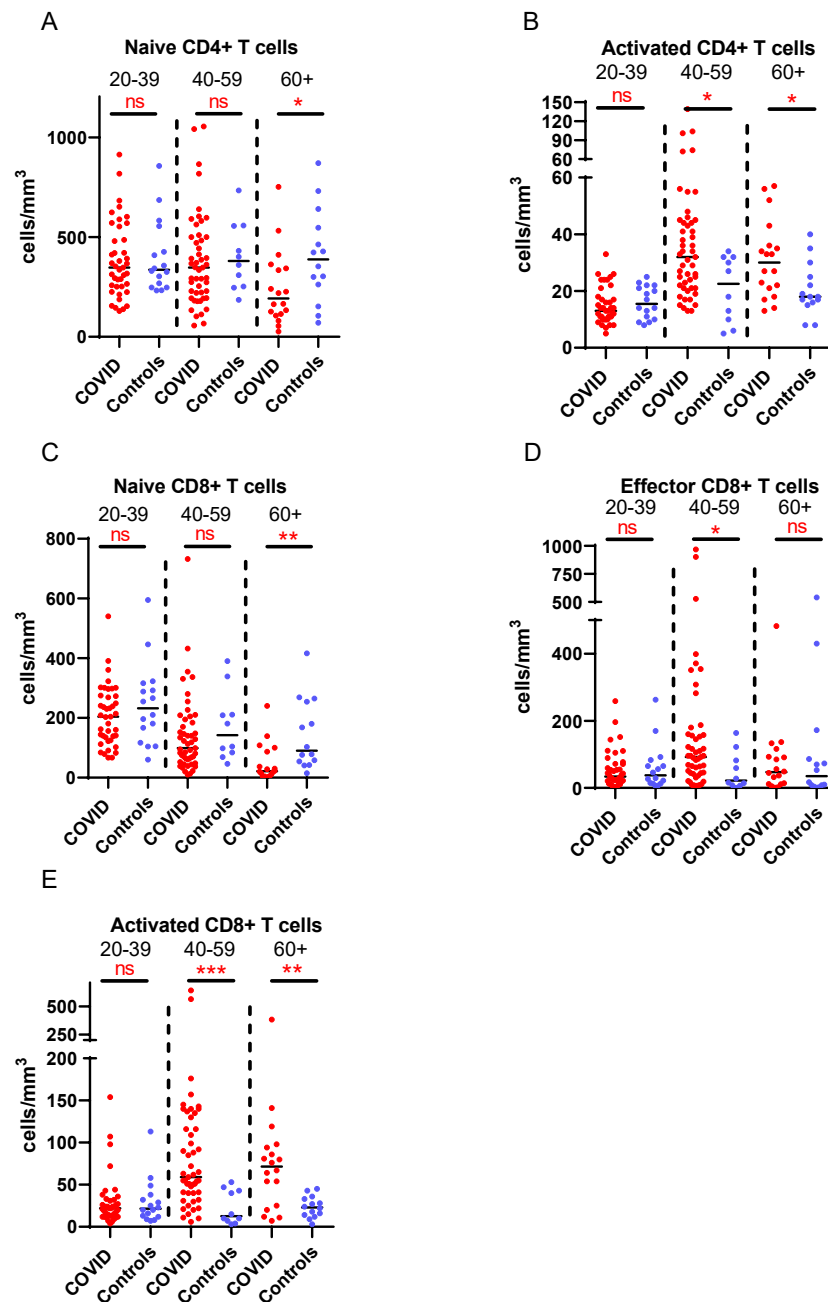
656 **Figure 5: Relationship between D-dimers and lymphocyte subsets in convalescent COVID-19.**

657 Correlation between D-dimers and **(A)** naive CD8+ T cells, **(B)** activated CD4+ T cells and **(C)**

658 activated CD8+ lymphocytes. D-dimer shown as log scale. Dashed vertical line represents lower

659 limit of detection for D-dimer assay. Correlation assessed by Pearson’s chi-squared test.

660

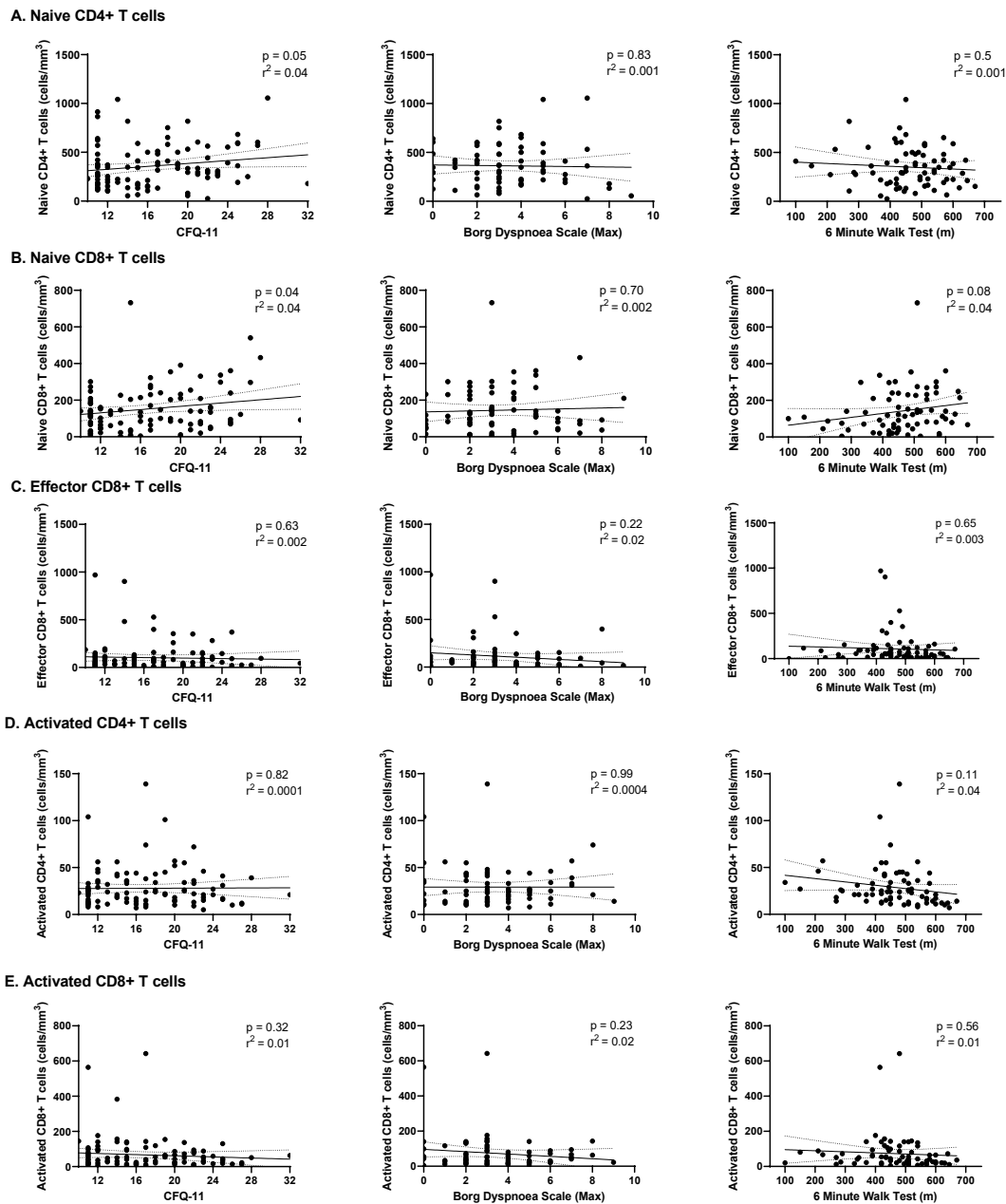


662

663 **Figure 6: Age-associated changes in convalescent lymphocyte subsets versus age-matched**
 664 **controls.** Lymphocyte immunophenotyping of convalescent COVID patients (n=111) broken
 665 down by age with age-matched controls, showing absolute number of **(A)** naive CD4+ T cells and
 666 **(B)** activated CD4+ T cells, and **(C)** naive CD8+ T cells, **(D)** activated CD8+ T cells and **(E)** effector
 667 CD8+ T cells. Differences assessed by Wilcoxon rank-sum test. * p < 0.05, ** p < 0.01, *** p < 0.001,
 668 NS = Not Significant

669

670 **Figure 7**



671

672 **Figure 7: Relationships of lymphocyte subsets with physical health measures and D-dimers.**

673 Relationship with fatigue, perceived exertion and 6MWT distance with **(A)** naïve CD4+ T cells, **(B)**

674 naïve CD8+ T cells, **(C)** effector CD8+ T cells, **(D)** activated CD4+ T cells and **(E)** activated CD8+ T

675 cells. Relationships assessed using linear regression. CFQ-11 = Chalder Fatigue Questionnaire-11

676

677 **Table 1: Cohort characteristics**

Characteristic	All (n = 111)	Cohort One (n = 40)	Cohort Two (N = 71)	Statistic
Sex, female, n (%)	70 (63.06)	21 (52.5)	49 (70)	$\chi^2 = 8.3, p = 0.004$
Age, mean (SD)	45.9 (14.9)	51.4 (16.9)	44.3 (14.1)	$t = 2.2, p = 0.01$
Clinical Frailty Score, median (IQR)	1 (1 – 2)	2 (1 – 2.5)	1 (1-2)	$z = -4.3, p < 0.001$
Co-morbidities, median, n (IQR)	1 (0 – 2)	1 (0 – 2)	0 (0-2)	$z = -1.11, p = 0.27$
Co-medications, median, n (IQR)	1 (0 – 3)	1 (0 – 4)	1 (0-2)	$z = -1.14, p = 0.25$
Admission during acute infection, n (%)	48 (43)	30 (75)	18 (25)	$\chi^2 = 25.7, p < 0.001$
Admission to ICU, n (%)	14 (12.6)	8 (20)	6 (8)	$\chi^2 = 3.1, p = 0.08$
Time to follow up, days, median (IQR)	82 (67 – 112)	68 (60.5 – 71)	101 (76-117)	$z = 5.04, p < 0.001$
Feel back to full health (yes), n (%)	37 (33)	22 (55)	15 (21.2)	$\chi^2 = 16.7, p < 0.001$
Healthcare worker, n (%)	74 (66.7)	15 (37.5)	59 (83)	$\chi^2 = 23.9, p < 0.001$
Distance at 6MWT, m, median (IQR)	475 (415 – 540)	435 (390 – 540)	480 (430-540)	$z = 4.5, p = 0.65$
MBS, median (IQR)	3 (2 – 5)	3 (2 – 5)	3 (2 - 5)	$z = -0.42, p = 0.68$
Fatigue score, median (IQR)	15 (11 – 20)	13 (11 – 18)	17 (12 - 21)	$z = 1.58, p = 0.11$
Fatigue <i>caseness</i> , n (%)	61 (55)	15 (37.5)	46 (65)	$\chi^2 = 7.7, p 0.01$

678

679 χ^2 , Chi-squared test; t, t-test; z, Wilcoxon rank-sum test. 6MWT, 6-minute-walk test; MBS, Modified Borg Dyspnoea Scale

680 **Table 2. Active COVID-19 is associated with a significant pro-inflammatory response which normalises following resolution of**
 681 **acute infection**

Laboratory Parameter	Reference Range	Values		Statistic	N (%) Abnormal Results	
		Acute COVID-19	Post COVID-19		Acute COVID-19	Post COVID-19
Routine Laboratory Markers						
Neutrophil Count (x10 ⁹ /L)	2-7.5	3.5 (2.3-4.4)	3.15 (2.55-4.05)	z =0.47, p =0.64	5 (13%)	0 (0%)
Lymphocyte Count (x10 ⁹ /L)	1.5-3.5	1.3 (1-1.8)	1.9 (1.55-2.35)	z=-2.85, p = 0.004	24 (60%)	5 (13%)
Neutrophil: Lymphocyte		2.5 (1.3-3.9)	1.7 (1.3-2.1)	z =2.82, p = 0.005		
Lactate Dehydrogenase (U/L)	135-250	230 (190-308)	187.5 (165-210)	z = 3.27, p = 0.001	14 (35%)	0 (0%)
Fibrinogen (g/L)	1.9-3.5	4.4 (3.6-6)	3 (2.6-3.4)	z = 2.86, p = 0.004	22 (55%)	2 (5%)
D-Dimer (ng/mL)	0-500	496 (258-851)	396 (215-599)	z = 1.93, p = 0.05	20 (50%)	10 (25%)
C Reactive Protein (mg/L)	0-5	28.15 (3.16-53.58)	1.43 (1.00-1.99)	z = 4.75, p<0.001	31 (78%)	3 (8%)
Pro-Inflammatory Cytokines						
IL-6 (pg/mL)		15.3 (4.19-31.7)	2.17 (1.45-3.35)	z = 4.72, p<0.001	22 (55%)	3 (8%)
IL-1 β		0.26 (0.18-0.45)	0.19 (0.11-0.31)	z = 2,1, p = 0.035	1 (2.5%)	1 (2.5%)
TNF α		21.3 (16-25)	12.2 (10.3-14.8)	z = 3.95, p<0.001	16 (40%)	2 (5%)
IL-8		31.1 (20.3-46.4)	16.5 (12.3-21.4)	z = 4.23, p<0.001	17 (42.5%)	4 (10%)
Soluble CD25 (pg/mL)		1,898 (1520-2455)	1,187 (878-1634)	z = 4.61, p<0.001	11 (28%)	2 (5%)

682

683 Data presented as medians with IQRs. z, Wilcoxon matched pair

684 **Table 3: No relationship between extended T cell subsets and symptoms of fatigue, dyspnoea or distance walked on the six-**
 685 **minute walk test post-COVID-19.**

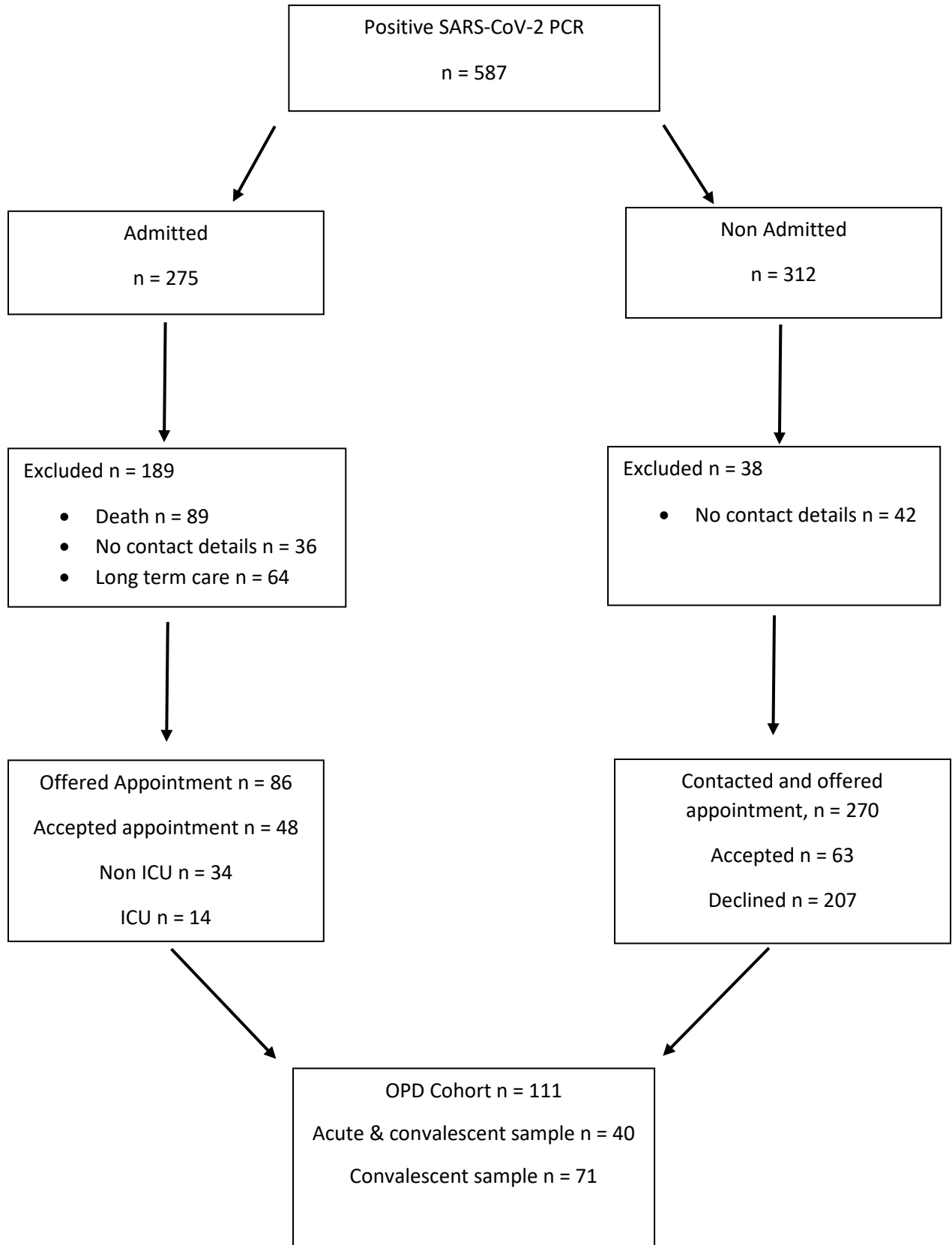
	CFQ-11				6MWT (meters)				Borg Dyspnoea Scale			
	Model 1		Model 2 (adj.)		Model 1		Model 2 (adj.)		Model 1		Model 2 (adj.)	
	β Coeff (95% CI)	P	Adj. β Coeff (95% CI)	p	β Coeff (95% CI)	p	Adj. β Coeff (95% CI)	p	β Coeff (95% CI)	p	Adj. β Coeff (95% CI)	p
Naïve CD4 Count	0.005 (0.00, 0.01)	0.046	0.004 (-0.001, 0.01)	0.07	-0.05 (-0.19, 0.09)	0.50	-0.14 (-0.26, -0.02)	0.02	-0.0002 (-0.003, 0.002)	0.83	-0.0002 (-0.003, 0.002)	0.89
Naïve CD8 Count	0.01 (0.001, 0.02)	0.04	0.01 (0.001, 0.02)	0.04	0.20 (-0.03, 0.42)	0.08	-0.10 (-0.34, 0.13)	0.39	0.001 (-0.003, 0.005)	0.70	0.003 (-0.002, 0.008)	0.21
Effector CD8 Count	-0.002 (-0.01, 0.01)	0.63	0.003 (-0.05, 0.05)	0.92	-0.04 (-0.20, 0.12)	0.65	0.01 (-0.13, 0.15)	0.85	-0.002 (-0.005, 0.001)	0.22	-0.002 (-0.004, 0.001)	0.23
Activated CD4 Count	0.04 (-0.69, 0.77)	0.82	-0.01 (-0.06, 0.04)	0.75	-1.04 (-2.31, 0.23)	0.11	-0.0002 (-1.19, 1.19)	0.99	-0.0001 (-0.02, 0.02)	0.99	-0.01 (-0.03, 0.02)	0.48
Activated CD8 Count	-0.01 (-0.02, 0.01)	0.32	-0.01 (-0.02, 0.004)	0.20	-0.08 (-0.35, 0.19)	0.56	0.09 (-0.16, 0.33)	0.48	-0.003 (-0.008, 0.002)	0.23	-0.004 (-0.01, 0.001)	0.10

686

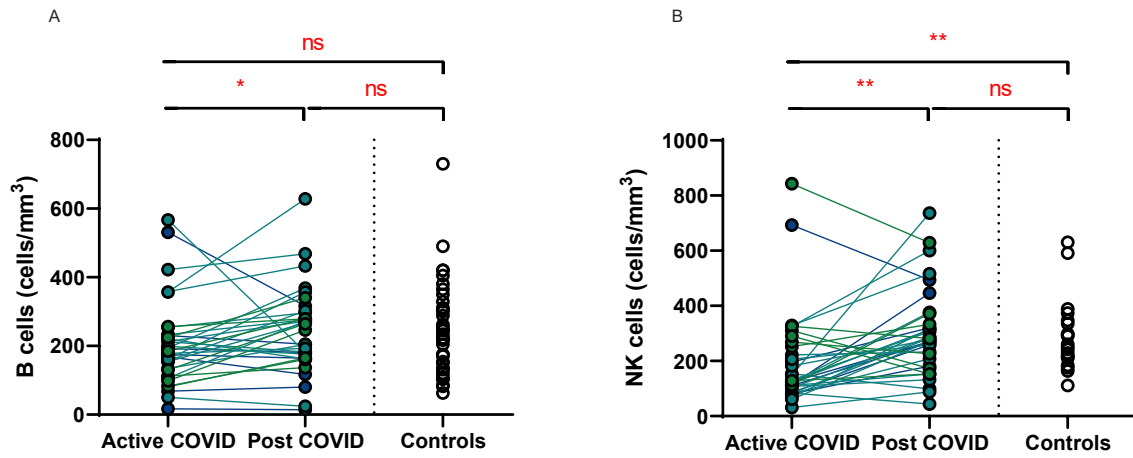
687 Linear regression. CI; confidence interval. Model 1, unadjusted; Model 2, adjusted for age, sex, Clinical Frailty Scale and severity of
 688 acute COVID-19 illness. Bonferroni correction, statistical significance $p < 0.01$

689

Supplemental Figure 1: Patient enrolment diagram

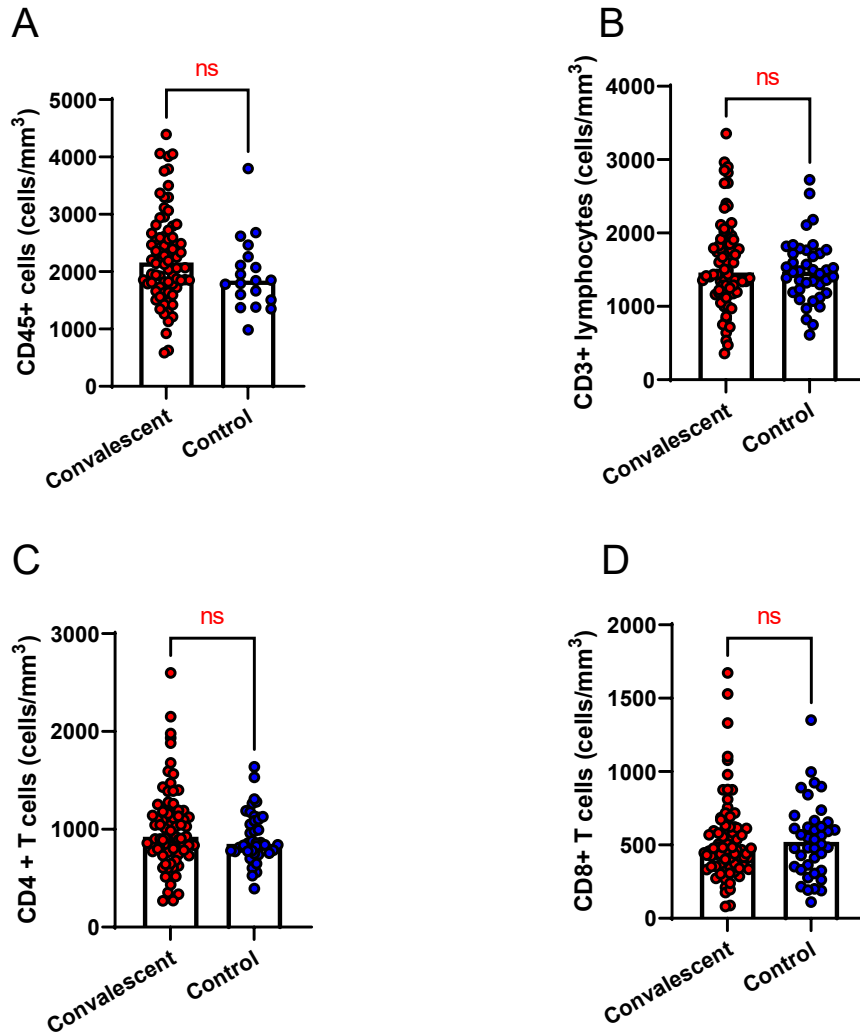


Supplemental Figure 2: Recovery of B and NK cells



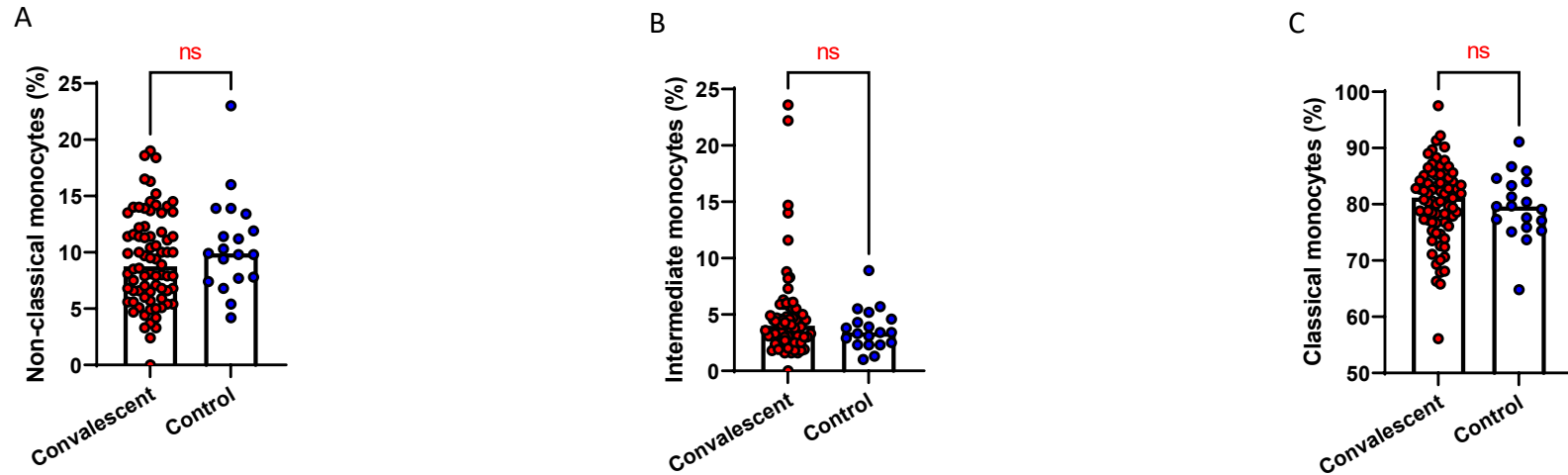
Supplemental Figure 2: Matched peripheral whole blood lymphoid cell counts from n=40 patients recovered from COVID-19 versus uninfected controls (n=40). **(A)** B cells **(B)** NK cells. Wilcoxon rank-sum (unpaired) and Wilcoxon sign-rank (paired) tests. * p < 0.05, ** p < 0.01, ns = Not Significant

Supplemental Figure 3: Major lymphoid populations in convalescent COVID-19.



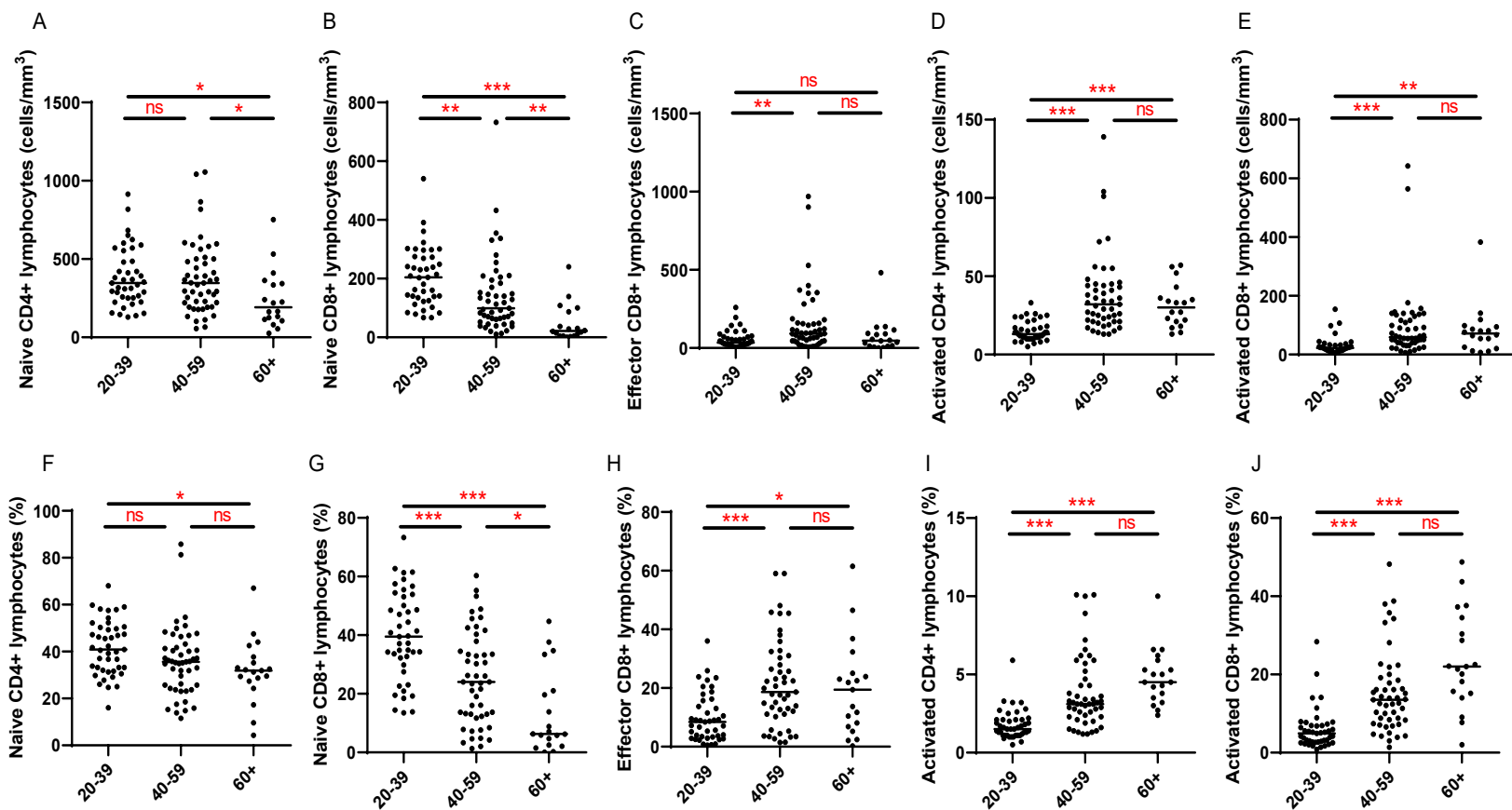
Supplemental Figure 3: Major lymphoid populations in n=71 convalescent COVID patients in comparison to n=40 controls **(A)** CD45+ cells **(B)** CD3+ lymphocytes **(C)** CD4+ T cells **(D)** CD8+ T cells. Wilcoxon rank-sum test ns=not significant

Supplemental Figure 4: Monocyte subpopulations in convalescent COVID-19.



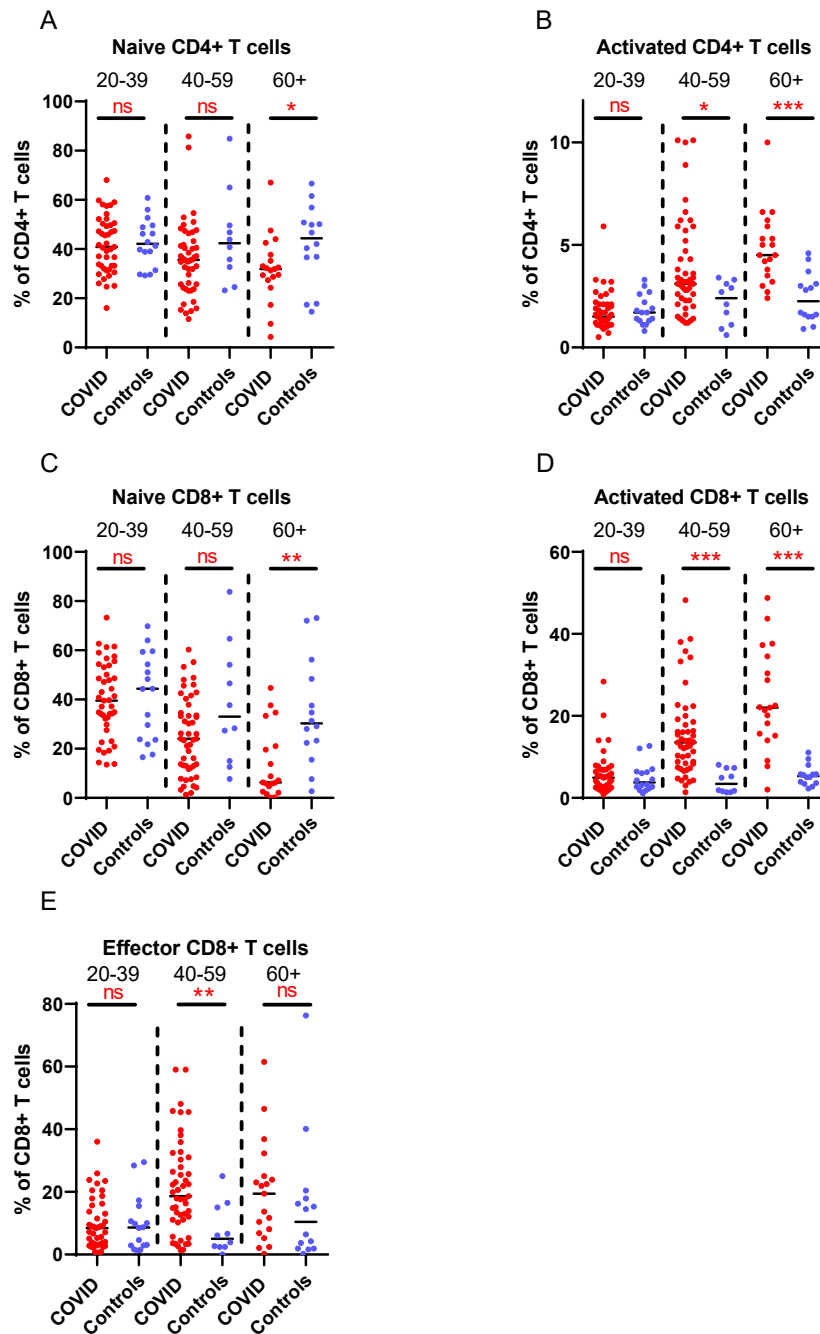
Supplemental Figure 4: Monocyte subpopulations in n=71 convalescent COVID patients in comparison to n=20 controls **(A)** non-classical monocytes **(B)** intermediate monocytes **(C)** classical monocytes. Wilcoxon rank-sum test. ns=not significant

Supplemental Figure 5: Age-associated changes in convalescent lymphocyte subsets



Supplemental Figure 5: Lymphocyte immunophenotyping of convalescent COVID patients (n=111) broken down by age. **(A)** naïve CD4+ T cell count **(B)** naïve CD8+ T cell count **(C)** effector CD8+ T cell count **(D)** activated CD4+ T cell count **(E)** activated CD8+ T cell count **(F)** naïve CD4+ T cell proportion **(G)** naïve CD8+ T cell proportion **(H)** effector CD8+ T cell proportion **(I)** activated CD4+ T cell proportion **(J)** activated CD8+ T cell proportion. Kruskal-Wallis test with post-hoc Dunn test. * p < 0.05, ** p < 0.01, *** p < 0.001, ns = Not Significant

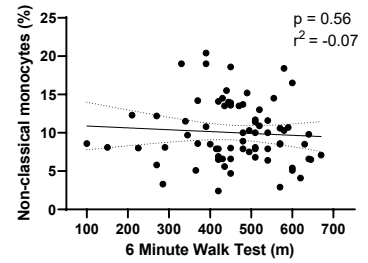
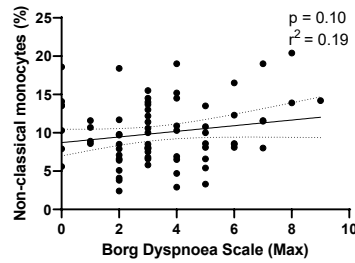
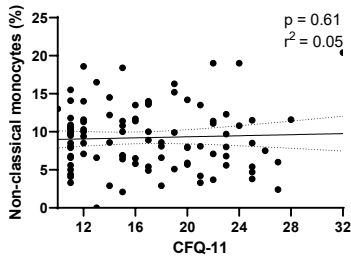
Supplemental Figure 6: Age-associated changes in convalescent lymphocyte subset proportions versus age-matched controls



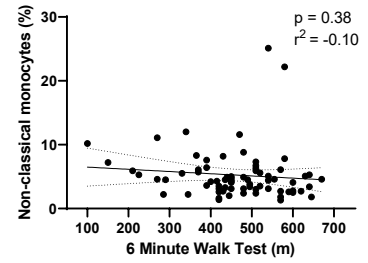
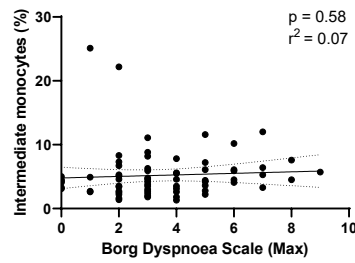
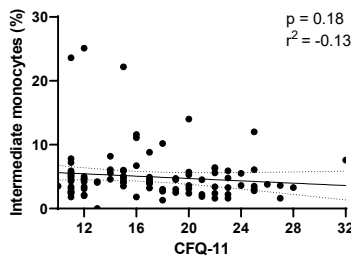
Supplemental Figure 6: Lymphocyte immunophenotyping of convalescent COVID patients (n=111) broken down by age with age-matched controls, showing proportions of naïve (A) and activated (B) CD4+ T cells, and naïve (C), activated (D) and effector (E) CD8+ T cells. Differences assessed by Kruskal-Wallis test with post-hoc Dunn test. * p < 0.05, ** p < 0.01, ***p < 0.001, NS = Not Significant

Supplemental Figure 7: Relationships of monocyte subsets with physical health measures

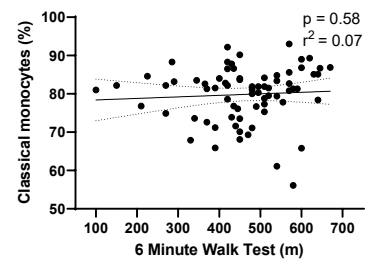
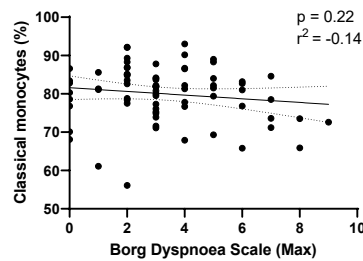
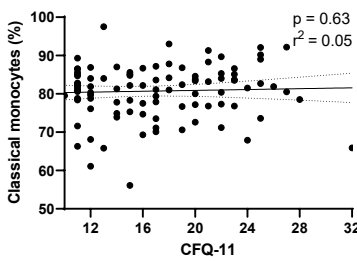
A. Non-classical monocytes



B. Intermediate monocytes

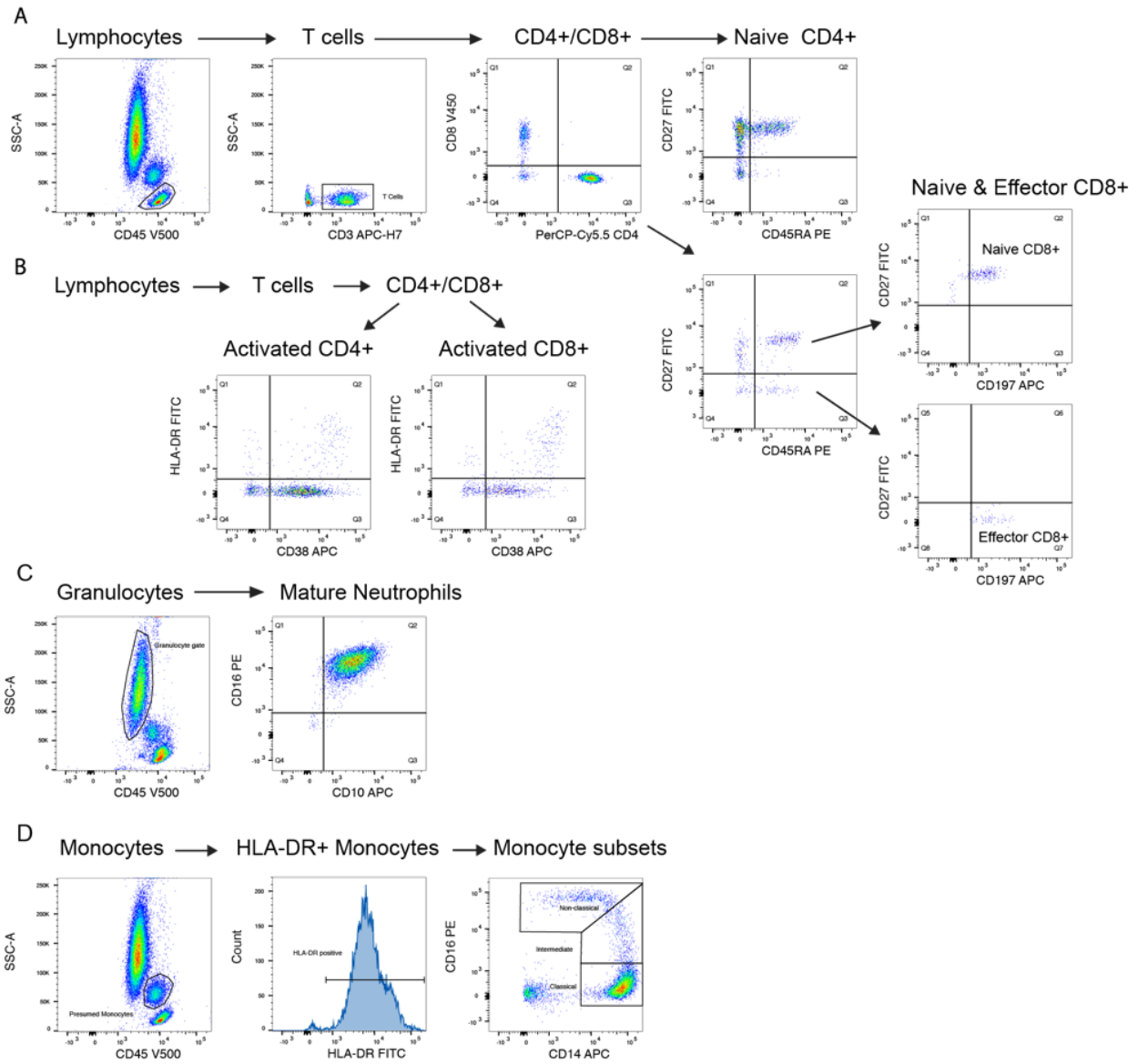


C. Classical monocytes



Supplemental Figure 7: Relationship with fatigue, perceived exertion and 6MWT distance in $n=101$ convalescent COVID patients with (A) non-classical monocytes (B) intermediate monocytes (C) classical monocytes. Correlation assessed with Pearson's chi-squared test. CFQ-11 = Chalder Fatigue Questionnaire-11

Supplemental Figure 8: Flow cytometry gating strategy.



Supplemental Figure 8: Gating strategy for flow cytometry shown (A) naive and effector T lymphocytes (B) activated T lymphocytes (C) neutrophils (D) monocytes

Supplemental Table 1: Flow cytometry antibodies

Antibody	Fluorophore	Clone	Company	Catalogue #
CD45	V500-C	2D1	BD Biosciences	655873
CD8	V450	RPA-T8	BD Biosciences	560347
CD3	APC-H7	SK7	BD Biosciences	641415
CD4	PerCP/CY5.5	Sk3	BD Biosciences	332772
CD45RA	PE	-	BD Biosciences	556627
CD27	FITC	-	BD Biosciences	555440
CD197	Alexa Fluor 647	150503	BD Biosciences	560816
HLA DR	FITC	L243	BD Biosciences	347400
CD38	APC	HB-7	BD Biosciences	345807
CD14	APC	MΦP9	BD Biosciences	345787
CD16	PE	B73.1	BD Biosciences	332779
CD10	APC	HI10a	BD Biosciences	332777