

1 The long-term success of mandatory vaccination laws at implementing
2 the first vaccination campaign in 19th century rural Finland

3

4 **Susanna Ukonaho¹, Virpi Lummaa^{1*}, Michael Briga^{1,2*}**

5

6 **¹Department of Biology, University of Turku, Vesilinnantie 5, 20014 Turku, Finland**

7 **² Infectious Disease Epidemiology Group, Max Planck Institute for Infection Biology,**
8 **Charitéplatz 1, Campus Charité Mitte, 10117 Berlin, Germany**

9 ***Equal contributions**

10

11 **Abstract**

12 In high income countries, childhood infections are on the rise, a phenomenon in part attributed
13 to persistent hesitancy towards vaccines. To combat vaccine hesitancy, several countries
14 recently made vaccinating children mandatory, but the effect of such vaccination laws on
15 vaccination coverage remains debated and the long-term consequences are unknown. Here we
16 quantified the consequences of vaccination laws on the vaccination coverage monitoring for a
17 period of 63 years rural Finland's first vaccination campaign against the highly lethal childhood
18 infection smallpox. We found that annual vaccination campaigns were focussed on children up
19 to 1 year old, but that their vaccination coverage was low and declined with time until the start
20 of the vaccination law, which stopped the declining trend and was associated with an abrupt
21 coverage increase of 20 % to cover >80 % of all children. Our results indicate that vaccination
22 laws had a long-term beneficial effect at increasing the vaccination coverage and will help
23 public health practitioners to make informed decisions on how to act against vaccine hesitancy
24 and optimise the impact of vaccination programmes.

25

26 **Introduction**

27 Infectious diseases are a major public health concern and socio-economic burden at all ages
28 (1), but children are by far the most vulnerable to infections (2). In many low and middle-
29 income countries, pertussis and measles remain among the top ten of all-cause mortality for
30 children below age five (3,4). In high income countries, these infections are currently on the
31 rise (5–11), despite the ready availability of vaccines.

32 One factor driving the increasing burden of childhood infections in high-income countries is
33 vaccine hesitancy (5–11), i.e. partial or delayed acceptance or refusal of vaccination despite
34 the availability of vaccines (12–14). Vaccine hesitancy is a key concern for public health
35 institutions, because vaccination is our main tool to reduce and ultimately reach the local
36 elimination of childhood infections (15). For the childhood infection measles and pertussis,
37 reaching elimination requires a vaccination coverage of 95 and 98% of the population
38 respectively (16,17), and such levels of vaccination coverage cannot be achieved with the
39 current levels of hesitancy in high-income countries, especially for example, when there are
40 spatial clusters of unvaccinated groups from which infections can re-emerge and spread
41 towards other geographic regions (18).

42 One strategy to combat vaccine hesitancy is to adopt vaccination laws, i.e. make vaccination
43 compulsory. Many states in the US and more recently in the European Union, e.g. in Italy,
44 France and Germany in 2017, 2018 and 2020 respectively, have adopted vaccination laws
45 which require children to be vaccinated against several childhood infections to be allowed to
46 public schools or collective child services (19–21). These rules are enforced with fines (19,20),
47 but children can be exempted for medical and in some states for various nonmedical reasons,
48 which in the US resulted in a patchy vaccination coverage (22,23). Hence, to what extent
49 vaccination laws are effective at increasing vaccination coverage is debated (24–29). So far,

50 preliminary studies and short-term monitoring indicate that recent vaccination laws have been
51 successful at generating a short-term increase in vaccination coverage in Italy and France
52 (19,21) and in California, where a recent vaccination policy eliminated nonmedical exemptions
53 from school entry requirements (30). However, to what extent this is a general result and
54 whether the increase lasts on the long-term remain unknown.

55 In this study, we quantified the vaccination coverage and the long-term impact of vaccination
56 laws on the vaccination coverage and its spatio-temporal dynamics during Finland's first
57 vaccination program against smallpox in the 19th century. In brief, smallpox was one of the
58 most lethal diseases in human history, affecting especially European and Native American
59 populations (31–33). For example, in our study population in 18th and 19th century Finland,
60 smallpox was a major cause of death in children, killing up to 15% of Finland's population
61 around 1800 before the introduction of vaccines (34–36).

62 Little is known on how the smallpox vaccination campaign was implemented in the 19th century
63 and to what extent it was successful (32), especially in rural areas where vaccine uptake remains
64 low even today in many parts of the world (37). For the purpose of this study, we digitised a
65 series of unique historical vaccination records (63 years, 1800 pages and over 46,000
66 individuals) maintained by the local church and the district doctor from the first vaccination
67 campaign against smallpox in eight rural parishes of Finland (Fig. 1A, Fig. S1). This study has
68 two aims. First, we described the seasonal and annual dynamics of the smallpox vaccination
69 campaigns in rural Finland and which age categories were targeted. Knowing the age at
70 vaccination is relevant for vaccine effectiveness: late vaccination diminishes protection against
71 infection, thereby enabling the transmission of infection, while early vaccination can result in
72 ineffective vaccination due to interference with maternal antibodies (38) in addition to
73 considerable negative side effects (39,40). Second, we tested two hypotheses, namely: did the
74 vaccination law cause (i) a long-term increase in *mean* vaccination coverage and (ii) a long-

75 term decrease in *variance* in vaccination coverage. Increasing vaccination coverage and
76 stabilizing its spatio-temporal variance are important because high variance can create pockets
77 of susceptibles from which epidemics can re-occur (41). As vaccination behaviours tend to
78 cluster within populations, highly vaccine hesitant communities may not reach herd immunity,
79 thus posing a risk of disease outbreak (18). The high vaccine hesitancy in the 19th century
80 together with the rare long-term monitoring of vaccination coverage after the vaccination law
81 provide a unique opportunity to quantify the long-term impact of vaccination laws in a high-
82 opposition setting which is not yet possible in countries that recently implemented vaccination
83 laws.

84 **Methods**

85 **Study population and data collection**

86 Finland's first vaccination campaign was met with high hesitancy from the public (42,43). It
87 started in 1802, quickly after the development of world's first vaccine by the British physician
88 Edward Jenner in 1796 (44). Historical records describe that during our observation period, the
89 distribution of vaccines improved gradually (42,43). In 1825 the country was divided into
90 vaccination districts, which kept record of vaccinated and non-vaccinated citizens. Each district
91 was supervised by a district doctor, who received annual reports from the vaccinators, who
92 were physicians, clergymen and public officers. As the opposition against vaccines remained
93 strong despite efforts to reassure the public, a mandatory vaccination law was adopted in 1883,
94 which required parents to vaccinate children under the age of two, which was gradually
95 enforced in 1885-1890 and onwards with a fine (42).

96 We photographed and digitised vaccination records manually from extensive church records
97 held in Finnish national and provincial archives. These data include details of the villagers and
98 their lives, that were by law required to be collected by local clergymen from 1749 onwards.

99 The clergymen recorded the name, address, parents' occupation, age, and the level of success
100 of the vaccination (as indicated by reported reaction to the vaccine: effective, mild or no
101 reaction) for each person receiving the vaccination at a given time, as well as previously
102 vaccinated, absent or refused individuals (Fig. S1). Based on the accessibility and completeness
103 of historical records, we obtained data from eight rural parishes (Honkajoki, Ikaalinen,
104 Jämijärvi, Karvia, Kustavi, Parkano, Rymättylä, Tyrvää) from 1837 until 1899, but we lacked
105 vaccination records from 1847-1851, 1854 and 1856-1858 for all parishes excluding Ikaalinen
106 and Tyrvää and from Kustavi before 1862 and Rymättylä before 1865 (Fig. S2 & S3). These
107 records include information on a total of 46,232 vaccinations, 26,328 and 19,935 records from
108 the pre-mandatory and mandatory eras respectively (Table 1).

109 In order to estimate the number of vaccinated children per age group, we gathered birth and
110 death records for each parish from the national and provincial archives, the Genealogical
111 Society of Finland and Finland's Family History Association digitised archives. These records
112 consisted of yearly births and deaths per age cohort (e.g. 0-1, 1-3, 3-5), which we used to
113 calculate the number of individuals per age cohort per parish. We estimated the vaccination
114 coverage based on the church records and total cohort sizes by calculating the yearly proportion
115 of vaccinated per cohort and parish from 1837 to 1899. There were a few years with >100%
116 vaccination coverage, which are likely the result of population movement. Birth records are
117 unlikely the cause of vaccine coverage reaching over 100% as these have been validated by
118 independent studies (45,46). Every five to ten years we had review tables of age-specific cohort
119 sizes per parish from the historical records which confirmed our annually estimated cohort
120 sizes.

121 **Statistical analyses**

122 **Seasonality and age distribution of the vaccination campaign**

123 The first aim of the study is to describe the occurrence and seasonal dynamics of the vaccination
124 campaigns. To detect whether vaccination campaigns were seasonally recurring we conducted
125 wavelet analysis. In brief, wavelet analysis decomposes time series data using functions
126 (wavelets) simultaneously as a function of both time (year of observation) and period, with a
127 period of 12 months indicating a yearly seasonally recurring pattern (47). We performed all
128 statistical analyses with the software R (version: 3.6.1 (48)). For the wavelet analyses, we fitted
129 a Morlet wavelet with the function ‘analyze.wavelet’ of the package ‘WaveletComp’ (49). To
130 minimize the impact of any influential data points, we smoothed and detrended the data
131 following standard protocol (49). We determined statistical significance by comparing the
132 observed periodicity from the data with that of 1000 ‘white noise’ simulated datasets with
133 [95%] significance level.

134 We then describe the age structure of the vaccination campaigns. For these analyses, we used
135 a matrix with the number of vaccinated per age group per year and divided age into four groups
136 (0-1, 1-3, 3-5, 5+). We tested for the preference towards children under one year old using non-
137 parametric permutation tests with the function ‘independence_test’ of the package ‘coin’ (50)
138 based on 10,000 permutations. We also describe the age at first vaccination for 872 individuals
139 with exact birth dates.

140 **Spatio-temporal dynamics of vaccination coverage**

141 To quantify the dynamics in vaccination coverage over time and across parishes and whether
142 the vaccination law affected these dynamics, we used generalized linear mixed models (glms)
143 and generalized additive mixed models (gamms). We ran four statistical models with as the
144 dependent variable either: (a) the number of vaccinations, (b) the vaccination coverage, (c) the
145 parish-level annual standard deviation (SD) in vaccination coverage and (d) the parish-level
146 annual coefficient of variation (CV) in vaccination coverage (for explanation see below, Table

147 S1A-D). In all these models the predictor variable was year standardised to the mean of zero
148 and an SD of one.

149 We fitted glms with the functions ‘glm’, ‘lme’ and ‘gls’ respectively of the packages ‘stats’
150 (32) and ‘nlme’ (51). These gave consistent results and we here present the results using ‘glm’
151 for the number of vaccinated (Poisson distributed counts; model (a)), ‘lme’ for vaccination
152 coverage (Gaussian distributed; model (b)) and ‘gls’ for parish-level SD and CV (Gaussian
153 distributed with temporal autocorrelation, see below, models (c) and (d)). To quantify the
154 statistical ‘significance’ of predictor variables, we compared the model fits on the data with the
155 second order Akaike Information Criterion (AICc; (52,53)), using the function ‘AICc’ of the
156 package ‘MuMIn’ (54). In brief, model selection ranks the models based on their AICc value,
157 where better fitting models are indicated by lower AICc, models within 4 Δ AICc are considered
158 plausible, and increasingly implausible up to 14 Δ AICc after which they are implausible
159 (52,53).

160 To account for the fact that people are clustered into parishes, we included parish identity as a
161 random intercept in model (b), the vaccination coverage analyses, which improved the model
162 fit (Δ AICc=-29 in Table S1B). To have an idea of the importance of parish level differences,
163 we reported the proportion of variance in the model explained by the random intercept and
164 estimated the repeatability of parish-level differences with the function ‘rpt’ of the package
165 ‘rptR’ (55). The repeatability is an intra-class correlation coefficient that captures the between-
166 parish variance (by parish identity as a random intercept) relative to the total variance and
167 ranges from zero (no parish-level differences) to one (all variance in the dependent variable is
168 explained by parish-level differences). We estimated the 95% confidence intervals (95CI)
169 around the repeatability based on 1000 bootstraps.

170 All model residuals were correctly distributed and fulfilled all other assumptions as checked
171 with the function 'simulateResiduals' of the package 'DHARMA' (56). In model (b), there was
172 however heteroscedasticity as identified with the functions (i) 'testQuantiles' from the package
173 'DHARMA' (56), and (ii) the Breusch-Pagan test performing a linear model using as dependent
174 variable the squared value of the conditional residuals of the model (b) and standardised year
175 as predictor variable (57). In model (b), we corrected for heteroscedasticity by including the
176 variance power ('varPower') in the function 'weights' (58,59). We then tried to identify two
177 sources of changes in heteroscedasticity by decomposing vaccination coverage into a parish-
178 level component and an annual component. For the parish-level component, we used as the
179 dependent variable the annual parish-level SD and CV in vaccination coverage (respectively
180 models (c) and (d), Table S1 C & D). To identify whether there was an annual component in
181 heteroscedasticity we used the Breusch-Pagan test as described above on the annual mean in
182 vaccination coverage (excluding parish-level variance) and using pre-mandatory and
183 mandatory era as a two-level categorical predictor.

184 We controlled for temporal autocorrelation following (60) by including standardised year as
185 an auto-regressive factor of order 1 (corAR1). In models (a) number of vaccinated and (b)
186 vaccination coverage, this worsened the model fit ($\phi=0.57\pm 0.25$, $\Delta AIC_c=+155$ for model b in
187 Table S1B), indicating no temporal autocorrelation, a conclusion also supported with the
188 function 'acf' ($ACF < 0.1$) of the package 'stats' (32). For these models, we hence presented the
189 results without temporal autocorrelation, but analyses including temporal autocorrelation gave
190 consistent conclusions (results not shown). Models (c) and (d), respectively parish-level SD
191 and CV in vaccination coverage were autocorrelated and thus we included the corAR1
192 autocorrelation structure in these models.

193 To investigate whether there were abrupt changes in vaccination coverage or its spatio-
194 temporal variance which coincided with the start of the vaccination law, we fitted threshold

195 models following Douhard et al. (61) and Briga et al (62). In brief, for each model (a-d), we
196 tested a series of threshold models, with one year interval between each threshold and identified
197 the best fitting threshold model based on the model's AICc value. To identify whether threshold
198 models were appropriate at all, we compared the model fit of the best fitting threshold model
199 with that of a linear model without threshold (Table S1 A-D). We identified the confidence
200 interval around the threshold year by including all models within 4 Δ AICc of the best fitting
201 threshold model (61,62), abbreviated as 4AICCI (Fig. S4 A, B, C & D). To confirm the results
202 of threshold models, we performed all analyses also using generalized additive mixed models
203 (gamms), with the function 'gamm' of the package 'mgcv', and to identify the year of change
204 (inflection points) we used their derivatives with the function 'fderiv' of the package 'gratia'
205 (63). All gamm analyses confirmed the conclusions obtained from the threshold models (Fig.
206 S5 A-H).

207

208 **Results**

209 **Seasonality and age distribution of the vaccination campaign**

210 Here we present data covering eight rural parishes in South-West Finland (Fig. 1A), with
211 26,328 records (57%) during the 46 years of the pre-mandatory era from 1837 to 1882 (average
212 572 records per year) and 19,935 records (43%) during the 17 years of mandatory era from
213 1883 until 1899 (average 1173 records per year; Table 1).

214 During both eras, vaccination campaigns started in May or June, occurred predominantly in
215 summer and often ended in August or September (Fig. 1B). This seasonal pattern was
216 confirmed by wavelet analysis, where we observed a statistically significant annual vaccination
217 periodicity ($p < 0.05$), both on average over the whole observation period ($p < 0.05$, Fig. S2A)
218 and in the time dependent analyses ($p < 0.05$, Fig. S2B).

219 We then investigated the age distribution of the people vaccinated during the campaigns. There
220 was a clear preference towards children under age one, with in the pre-mandatory era on
221 average 69% of the records being under age one, 21% between one and three years, 5.3%
222 between three and five years and 4.5% five years old or older ($\chi^2= 1143$, $p<0.0001$, Fig. 2A).
223 In the mandatory era, the preference towards one-year olds was 10% higher at 80% of the
224 records and this increase was statistically significant ($\chi^2= 39.73$, $p=2.9e-10$, Fig. 2A). We did
225 not observe a lower limit for the age at first vaccination (Fig. 2B): 872 of the 34,496 records
226 (2.5%) of the children under the age of one were below the age of 3 months. Thus, there was a
227 preference to vaccinate before age one which increased with time and with no apparent lower
228 age limit.

229 **Spatio-temporal dynamics of vaccination coverage**

230 The number of vaccinations increased with time (Fig. 2A, Table S1A). Threshold models
231 showed that this increase accelerated after the break point in 1871 ($1871<4AICCI<1871$; Fig.
232 S4A) and this result was supported by gamm models (Fig. S5A&B). This break point coincided
233 shortly after the drop in births during the famine years 1867-68. Because vaccination dynamics
234 can be driven mostly by the dynamics of births (Fig. 2A), we studied birth-independent
235 spatiotemporal dynamics of vaccinations by using vaccination coverage, i.e. the number of
236 individuals vaccinated relative to the number of individuals in the age category and focused
237 the analyses below on children until age one year.

238 We tested the hypothesis that the vaccination law increased the vaccination coverage. In the
239 pre-mandatory era, the vaccination coverage was on average 68% ($SD=27.8$,
240 $18.7<[95CI]<147$) and in the mandatory era this increased with 20% to 88% ($SD=21.5$,
241 $57.4<[95CI]<143$; Fig. 3). Analysing these time series with threshold models showed an abrupt
242 increase in vaccination coverage in 1882 ($1882<4AICCI<1882$; $\Delta AICc$ relative to a linear

243 increase=-30.4; Table S1B; Fig. 4, Fig S4B). Before the threshold the vaccination coverage
244 decreased with time, while after the threshold we observed an increase. Before the threshold,
245 the 95CI of coefficient does not overlap with zero and hence is statistically significant, but after
246 the threshold the 95CI overlaps with zero and hence is not significant (respectively: $\beta_1=-4.27$,
247 $-8.35<[95CI]<-0.20$, $p=0.04$; $\beta_2=9.22$, $-6.89<[95CI]<25.33$; Table S1B). Gamm models
248 supported the conclusions of threshold models with the gam derivative indicating the steepest
249 increase in coverage in 1882 (Fig. S5C&D). Hence, the implementation of the vaccination law
250 was associated with (i) a stop in declining coverage and (ii) an abrupt 20% increase in coverage
251 which (iii) persistent on the long-term.

252 We then tested whether the variance in vaccination coverage changed over time and Breusch-
253 Pagan test indicated a decrease in variance ($\Delta AICc=-15.49$). We tried to decompose whether
254 this decrease in variance is due to a spatial (between parishes) and/or a temporal (between
255 years) component. Vaccination coverage varied substantially and consistently between
256 parishes: parish identity captured 9.0% of the variance in vaccination coverage during the pre-
257 mandatory era which increased to 46% in the mandatory era (model in Table S1B) with a
258 repeatability of respectively 0.083 ($0.00<[95CI]<0.21$) and 0.32 ($0.069<[95CI]<0.55$). The
259 parish-level SD and CV in vaccination coverage decreased over time and showed an abrupt
260 change around 1873 (SD: $1869<4AICCI<1876$, CV: $1872<4AICCI<1874$; Table S1C & S1D;
261 Fig. 3B, Fig. S4C&D) and gamm models confirmed these conclusions (Fig. S5E-H). The
262 interannual SD decreased as well with time, from 12.94 in the pre-mandatory era to 6.48 in the
263 mandatory era (Breusch-Pagan test $p=0.46$). Hence the variance in vaccination coverage
264 stabilized between parishes and over time, but the parish-level stabilization started
265 approximately ten years before the introduction of the vaccination law.

266

267 **Discussion**

268 Commonly preventable childhood infections are on the rise in many contemporary high-
269 income countries following decreases in vaccination coverage, which has led to vaccination
270 laws against infections such as measles and pertussis e.g. in Europe, many US states and
271 Australia. However, we know almost nothing on the long-term effects of vaccination laws on
272 vaccination coverage and its dynamics. In this study, we show that the Finland's first
273 vaccination campaigns in rural parishes were mainly executed during the summer, often in the
274 middle of farming season and most of the vaccinated individuals were under the age of one
275 year. We show an abrupt increase in vaccination coverage which coincided with the start of a
276 vaccination law and persisted for at least 15 years. However, we also found differences in
277 vaccination coverage between parishes, and although spatio-temporal variance in vaccination
278 coverage decreased with time, this variance persisted and its sudden decrease ten years before
279 the vaccination law appeared not to be associated with the vaccination law. Here we discuss
280 three implications of our results for the impact of vaccination campaigns and vaccination
281 policy.

282 First, low vaccination coverage in rural areas is a challenge that contemporary vaccination
283 campaigns try to solve, especially in low and middle income countries (64–66). Increasing the
284 vaccination coverage in these areas is important because spatial heterogeneity in vaccination
285 coverage creates low vaccination clusters which can become a source of outbreaks that spread
286 towards other areas (18). Our finding of repeatable parish-specific vaccination coverage show
287 that vaccination coverage is a geographically local characteristic. The reasons behind the poor
288 and fluctuating coverage in rural communities are complex (12,64,65), but at least two
289 possibilities stand out. Firstly, remote parishes are often more difficult to access and possibly
290 less well managed than more urban parishes (67). Secondly, people living in remote rural
291 parishes might be less motivated or more hesitant to vaccinate (68,69). We observed a decline

292 in the spatio-temporal variation in vaccination coverage, indicating improvements in the
293 management of the vaccination campaign and reduction in inequity between the parishes.
294 Although vaccination law probably attributed to this decline, it started a decade earlier and
295 shortly after the famine years (1867-68), which suggests that it is not directly associated with
296 the vaccination law itself and is for example more likely due to improved accessibility in certain
297 rural areas.

298 Second, one notable characteristic of the campaign was that children seemed to be vaccinated
299 without lower age limit. Smallpox epidemics were still prevalent during the 19th century and
300 as vaccinators travelled to rural areas only once a year, early vaccination may have been the
301 optimal solution at the time. However, we now know that early vaccination can be ineffective,
302 for example through maternal blunting, where maternal antibodies of vaccinated mothers
303 interfere with infant immune response and lower the infant's responsiveness to vaccines (38),
304 hence for example in contemporary societies a recommended age at first vaccination of at least
305 three months for several childhood infections and one year for smallpox (39).

306 Finally, mandatory vaccinations have been one of the strategies considered to combat low
307 vaccination coverage, but this approach has always been controversial and associated with
308 opposition (70). Our results show an abrupt increase in the vaccination coverage at the start of
309 the vaccination law. Similarly, short-term studies in contemporary societies observed
310 immediate increases in vaccination coverage after the introduction of the vaccination laws
311 (19,71) and our study suggested that the observed increases will persist on a longer term.
312 Moreover, there were no major lethal smallpox outbreaks after 1882 (Fig. S6), reflecting that
313 vaccination together with for example the general improvements in living conditions (72)
314 diminished the lethal burden of smallpox.

315 Our study has several limitations. First, instead of vaccine hesitancy, vaccine delivery can be a
316 major factor affecting vaccination coverage (73). In our study population, vaccine uptake likely
317 improved at least in part due to better distribution and managing of the vaccination campaign.
318 We cannot exclude sudden organisational changes of vaccination campaigns, but historical
319 records indicate organisation improved gradually during our observation period (42,43). This
320 is also indicated by the changes in CV and SD in vaccination coverage which occurred 10 years
321 prior to the vaccination law, which probably reflects an improvement in Finland's access to
322 vaccines. Thus, in our study, the vaccination law and associated fines constitute just one factor
323 that increased the vaccination coverage. Second, our study population was limited to eight rural
324 towns from western-Finland. As vaccination campaigns may differ between cities or rural
325 parishes, it is unclear to what extent we can extrapolate the characteristics of the vaccination
326 campaign and the response to the vaccination law in time and space. Third, as parishes did not
327 decline anybody wanting to get vaccinated, our estimates for the number of vaccinated also
328 include temporary travellers from other parishes, which results in some data points with >100%
329 vaccination coverage, indicating an overestimation of the vaccination coverage of the locals.
330 Thus, vaccination campaigns were probably not quite as successful before or after the
331 vaccination law as our estimates indicate.

332 The reasons behind changes in vaccine uptake remain complex and hence other measures than
333 vaccination laws, such as training medical professionals about vaccines, actively
334 recommending vaccines and good communication with the lay public are also needed to
335 increase the vaccination coverage (29,74). Implementing vaccination laws with clear and
336 consistent communication can help reach infection-specific thresholds for herd immunity and
337 subsequent elimination (41,75). Our study indicates that vaccination laws will be an effective
338 long-term tool in the public health battle to increase vaccination coverage and towards the

339 elimination of childhood infections, even in socio-demographic contexts (rural areas, pre-
340 health care periods) where vaccines are often met with higher reluctance than in urban areas.

341

342 **Acknowledgements**

343 Many thanks to Kimmo Pokkinen, Sara Itkonen and Tuija Koivisto for help with historical
344 data, to the National Archives of Finland for allowing us to digitize and use the vaccination
345 records and to Finland's Family History Association and the Genealogical Society of Finland
346 for access to the birth and death data. We are grateful to the Nordemics Consortium for useful
347 discussions. For funding, we thank the valuable contributions from the Doctoral Programme in
348 Biology, Geography and Geology, University of Turku, the Ella & Georg Ehrnrooth
349 Foundation, the Academy of Finland (292368), ERC (CoG 648766) and NordForsk (104910).
350 The authors declare no conflicts of interest. The data supporting the findings of our study are
351 derived from three public domains: the National Archives of Finland, Finland's Family History
352 Association and the Genealogical Society of Finland.

353 **References**

- 354 1. Morens DM, Folkers GK, Fauci AS. The challenge of emerging and re-emerging
355 infectious diseases [published correction appears in *Nature*. 2010 Jan 7;463(7277):122].
356 *Nature*. 2004;430(6996):242-249. doi:10.1038/nature02759
- 357 2. Naghavi M, Abajobir A, Abbafati C, Abbas K, Abd-Allah F, Abera S-F, et al. Global,
358 regional, and national age-sex specific mortality for 264 causes of death, 1980-2016: a
359 systematic analysis for the Global Burden of Disease Study 2016 [published correction
360 appears in *Lancet*. 2017 Oct 28;390(10106):e38]. *Lancet*. 2017;390(10100):1151-1210.
361 doi:10.1016/S0140-6736(17)32152-9
- 362 3. Global Burden of Disease Child and Adolescent Health Collaboration, Kassebaum N,
363 Kyu HH, et al. Child and Adolescent Health From 1990 to 2015: Findings From the
364 Global Burden of Diseases, Injuries, and Risk Factors 2015 Study [published correction
365 appears in *JAMA Pediatr*. 2017 Jun 1;171(6):602] [published correction appears in
366 *JAMA Pediatr*. 2017 Oct 1;171(10):1019]. *JAMA Pediatr*. 2017;171(6):573-592.
367 doi:10.1001/jamapediatrics.2017.0250
- 368 4. GBD 2019 Diseases and Injuries Collaborators. Global burden of 369 diseases and
369 injuries in 204 countries and territories, 1990-2019: a systematic analysis for the Global
370 Burden of Disease Study 2019 [published correction appears in *Lancet*. 2020 Nov
371 14;396(10262):1562]. *Lancet*. 2020;396(10258):1204-1222. doi:10.1016/S0140-
372 6736(20)30925-9
- 373 5. Dabbagh A, Patel MK, Dumolard L, et al. Progress Toward Regional Measles
374 Elimination - Worldwide, 2000-2016. *MMWR Morb Mortal Wkly Rep*.
375 2017;66(42):1148-1153. Published 2017 Oct 27. doi:10.15585/mmwr.mm6642a6
- 376 6. Omer SB, Salmon DA, Orenstein WA, deHart MP, Halsey N. Vaccine refusal,
377 mandatory immunization, and the risks of vaccine-preventable diseases. *N Engl J Med*.
378 2009;360(19):1981-1988. doi:10.1056/NEJMs0806477
- 379 7. Phadke VK, Bednarczyk RA, Salmon DA, Omer SB. Association Between Vaccine
380 Refusal and Vaccine-Preventable Diseases in the United States: A Review of Measles
381 and Pertussis [published correction appears in *JAMA*. 2016 May 17;315(19):2125]
382 [published correction appears in *JAMA*. 2016 May 17;315 (19):2125]. *JAMA*.
383 2016;315(11):1149-1158. doi:10.1001/jama.2016.1353

- 384 8. Lo NC, Hotez PJ. Public Health and Economic Consequences of Vaccine Hesitancy for
385 Measles in the United States. *JAMA Pediatr.* 2017;171(9):887-892.
386 doi:10.1001/jamapediatrics.2017.1695
- 387 9. Olive JK, Hotez PJ, Damania A, Nolan MS. The state of the antivaccine movement in
388 the United States: A focused examination of nonmedical exemptions in states and
389 counties [published correction appears in *PLoS Med.* 2018 Jul 6;15(7):e1002616]. *PLoS*
390 *Med.* 2018;15(6):e1002578. Published 2018 Jun 12. doi:10.1371/journal.pmed.1002578
- 391 10. Hotez PJ, Nuzhath T, Colwell B. Combating vaccine hesitancy and other 21st century
392 social determinants in the global fight against measles. *Curr Opin Virol.* 2020;41:1-7.
393 doi:10.1016/j.coviro.2020.01.001
- 394 11. Gardner L, Dong E, Khan K, Sarkar S. Persistence of US measles risk due to vaccine
395 hesitancy and outbreaks abroad. *Lancet Infect Dis.* 2020;20(10):1114-1115.
396 doi:10.1016/S1473-3099(20)30522-3
- 397 12. World Health Organisation. Report of the SAGE working group on vaccine hesitancy.
398 Accessed October 1, 2014
- 399 13. Thomson A, Robinson K, Vallée-Tourangeau G. The 5As: A practical taxonomy for the
400 determinants of vaccine uptake. *Vaccine.* 2016;34(8):1018-1024.
401 doi:10.1016/j.vaccine.2015.11.065
- 402 14. Betsch C, Schmid P, Heinemeier D, Korn L, Holtmann C, Böhm R. Beyond confidence:
403 Development of a measure assessing the 5C psychological antecedents of vaccination.
404 *PLoS One.* 2018;13(12):e0208601. Published 2018 Dec 7.
405 doi:10.1371/journal.pone.0208601
- 406 15. World Health Organisation. Global eradication of measles: report by the Secretariat.
407 Accessed March 25, 2010.
- 408 16. Guerra FM, Bolotin S, Lim G, et al. The basic reproduction number (R0) of measles: a
409 systematic review. *Lancet Infect Dis.* 2017;17(12):e420-e428. doi:10.1016/S1473-
410 3099(17)30307-9
- 411 17. Kretzschmar M, Teunis PF, Pebody RG. Incidence and reproduction numbers of
412 pertussis: estimates from serological and social contact data in five European countries.
413 *PLoS Med.* 2010;7(6):e1000291. Published 2010 Jun 22.
414 doi:10.1371/journal.pmed.1000291

- 415 18. Masters NB, Eisenberg MC, Delamater PL, Kay M, Boulton ML, Zelner J. Fine-scale
416 spatial clustering of measles nonvaccination that increases outbreak potential is
417 obscured by aggregated reporting data [published correction appears in Proc Natl Acad
418 Sci U S A. 2021 Aug 10;118(32):]. Proc Natl Acad Sci U S A. 2020;117(45):28506-
419 28514. doi:10.1073/pnas.2011529117
- 420 19. Gori D, Costantino C, Odone A, et al. The Impact of Mandatory Vaccination Law in
421 Italy on MMR Coverage Rates in Two of the Largest Italian Regions (Emilia-Romagna
422 and Sicily): An Effective Strategy to Contrast Vaccine Hesitancy. *Vaccines (Basel)*.
423 2020;8(1):57. Published 2020 Jan 30. doi:10.3390/vaccines8010057
- 424 20. Neufeind J, Betsch C, Zylka-Menhorn V, Wichmann O. Determinants of physician
425 attitudes towards the new selective measles vaccine mandate in Germany. *BMC Public
426 Health*. 2021;21(1):566. Published 2021 Mar 22. doi:10.1186/s12889-021-10563-9
- 427 21. Lévy-Bruhl D, Fonteneau L, Vaux S, et al. Assessment of the impact of the extension of
428 vaccination mandates on vaccine coverage after 1 year, France, 2019. *Euro Surveill*.
429 2019;24(26):1900301. doi:10.2807/1560-7917.ES.2019.24.26.1900301
- 430 22. Garnier R, Nedell ER, Omer SB, Bansal S. Getting Personal: How Childhood
431 Vaccination Policies Shape the Landscape of Vaccine Exemptions. *Open Forum Infect
432 Dis*. 2020;7(3):ofaa088. Published 2020 Mar 14. doi:10.1093/ofid/ofaa088
- 433 23. Wang E, Clymer J, Davis-Hayes C, Buttenheim A. Nonmedical exemptions from school
434 immunization requirements: a systematic review. *Am J Public Health*.
435 2014;104(11):e62-e84. doi:10.2105/AJPH.2014.302190
- 436 24. Akmatov MK, Rübsamen N, Deyneko IV, Karch A, Mikolajczyk RT. Poor knowledge
437 of vaccination recommendations and negative attitudes towards vaccinations are
438 independently associated with poor vaccination uptake among adults - Findings of a
439 population-based panel study in Lower Saxony, Germany. *Vaccine*. 2018;36(18):2417-
440 2426. doi:10.1016/j.vaccine.2018.03.050
- 441 25. Maltezou HC, Theodoridou K, Ledda C, Rapisarda V, Theodoridou M. Vaccination of
442 healthcare workers: is mandatory vaccination needed?. *Expert Rev Vaccines*.
443 2019;18(1):5-13. doi:10.1080/14760584.2019.1552141
- 444 26. Gualano MR, Olivero E, Voglino G, et al. Knowledge, attitudes and beliefs towards
445 compulsory vaccination: a systematic review. *Hum Vaccin Immunother*.

- 446 2019;15(4):918-931. doi:10.1080/21645515.2018.1564437
- 447 27. Hadjipanayis A, Dornbusch HJ, Grossman Z, Theophilou L, Brierley J. Mandatory
448 vaccination: a joint statement of the Ethics and Vaccination working groups of the
449 European Academy of Paediatrics. *Eur J Pediatr.* 2020;179(4):683-687.
450 doi:10.1007/s00431-019-03523-4
- 451 28. Vaz OM, Ellingson MK, Weiss P, et al. Mandatory Vaccination in Europe. *Pediatrics.*
452 2020;145(2):e20190620. doi:10.1542/peds.2019-0620
- 453 29. Musa S, Skrijelj V, Kulo A, et al. Identifying barriers and drivers to vaccination: A
454 qualitative interview study with health workers in the Federation of Bosnia and
455 Herzegovina. *Vaccine.* 2020;38(8):1906-1914. doi:10.1016/j.vaccine.2020.01.025
- 456 30. Nyathi S, Karpel HC, Sainani KL, et al. The 2016 California policy to eliminate
457 nonmedical vaccine exemptions and changes in vaccine coverage: An empirical policy
458 analysis. *PLoS Med.* 2019;16(12):e1002994. Published 2019 Dec 23.
459 doi:10.1371/journal.pmed.1002994
- 460 31. Duncan SR, Scott S, Duncan CJ. The dynamics of smallpox epidemics in Britain, 1550-
461 1800. *Demography.* 1993;30(3):405-423.
- 462 32. van Panhuis WG, Grefenstette J, Jung SY, et al. Contagious diseases in the United States
463 from 1888 to the present. *N Engl J Med.* 2013;369(22):2152-2158.
464 doi:10.1056/NEJMms1215400
- 465 33. Krylova O, Earn DJD. Patterns of smallpox mortality in London, England, over three
466 centuries. *PLoS Biol.* 2020;18(12):e3000506. Published 2020 Dec 21.
467 doi:10.1371/journal.pbio.3000506
- 468 34. Mielke JH, Jorde LB, Trapp PG, Anderton DL, Pitkänen K, Eriksson AW. Historical
469 epidemiology of smallpox in Åland, Finland: 1751-1890. *Demography.* 1984;21(3):271-
470 295.
- 471 35. Ketola T, Briga M, Honkola T and Lummaa V. Town population size and structuring
472 into villages and households drive infectious disease risks in pre-healthcare Finland
473 *Proc. R. Soc. B.* 2021; 288:20210356. 20210356. <http://doi.org/10.1098/rspb.2021.0356>
- 474 36. Ukonaho S, Lummaa V, Briga M. The long-term success of mandatory vaccination laws
475 at implementing world's first vaccination campaign in rural Finland [pre-print].

- 476 medRxiv. 2020. (doi:10. 1101/2020.12.14.20247577). Accessed December 16, 2020.
- 477 37. Ijarotimi IT, Fatiregun AA, Adebisi OA, Ilesanmi OS, Ajumobi O. Urban-rural
478 differences in immunisation status and associated demographic factors among children
479 12-59 months in a southwestern state, Nigeria. PLoS One. 2018;13(11):e0206086.
480 Published 2018 Nov 5. doi:10.1371/journal.pone.0206086
- 481 38. Zimmermann P, Perrett KP, Messina NL, et al. The Effect of Maternal Immunisation
482 During Pregnancy on Infant Vaccine Responses. EClinicalMedicine. 2019;13:21-30.
483 Published 2019 Jul 26. doi:10.1016/j.eclinm.2019.06.010
- 484 39. KEMPE CH. Studies smallpox and complications of smallpox vaccination. Pediatrics.
485 1960;26:176-189.
- 486 40. Cono J, Casey CG, Bell DM; Centers for Disease Control and Prevention. Smallpox
487 vaccination and adverse reactions. Guidance for clinicians. MMWR Recomm Rep.
488 2003;52(RR-4):1-28.
- 489 41. Keeling MJ, Rohani P. Modeling infectious diseases in humans and animals. Princeton,
490 278 USA: Princeton University Press; 2011.
- 491 42. Björkstén J. Vaccinationens historia i Finland II. Helsingfors; 1908.
- 492 43. Björkstén J. Vaccinationens historia i Finland, I. Helsingfors; 1902.
- 493 44. Fenner F, Henderson D, Arita I, Jezek Z, Ladnyi I. Smallpox and its eradication. World
494 Health Organization; 1988.
- 495 45. Pitkänen K. Deprivation and disease: Mortality during the Great Finnish Famine of the
496 1860's. Helsinki: [Suomen väestötieteen yhdistys] : Tiedekirja [jakaja]; 1993.
- 497 46. Voutilainen M, Helske J, Högmander H. A Bayesian Reconstruction of a Historical
498 Population in Finland, 1647–1850. Demography. 2020;57:1171–1192.
499 <https://doi.org/10.1007/s13524-020-00889-1>
- 500 47. Cazelles B, Chavez M, Magny GC, Guégan JF, Hales S. Time-dependent spectral
501 analysis of epidemiological time-series with wavelets. J R Soc Interface.
502 2007;4(15):625-636. doi:10.1098/rsif.2007.0212
- 503 48. R Core Team, R. A language and environment for statistical computing. R Foundation
504 for Statistical Computing, Vienna, Austria; 2020. <https://www.r-project.org/>
- 505 49. Roesch A, Schmidbauer H. WaveletComp: Computational Wavelet Analysis. 2018.

- 506 50. Hothorn T, Bretz F, Westfall P. Simultaneous inference in general parametric models.
507 Biom J. 2008;50(3):346-363. doi:10.1002/bimj.200810425
- 508 51. Pinheiro JC, Bates DM, DehRoy S, Sarkar D. nlme: Linear and Nonlinear Mixed Effects
509 Models. R Core Team 2020. <https://cran.r-project.org/package=nlme>
- 510 52. Burnham KP, Anderson DR, Huyvaert KP. AIC model selection and multimodel
511 inference in behavioral ecology: Some background, observations, and comparisons.
512 Behavioral Ecology and Sociobiology 2011;65(1):23–35.
513 <https://doi.org/10.1007/s00265-010-1029-6>
- 514 53. Burnham KP, Anderson DR. Model selection and multimodel inference : a practical
515 information-theoretic approach. Springer-Verlag New York; 2002.
516 <https://doi.org/10.1007/b97636>
- 517 54. Barton K. MuMIn: Multi-model inference. 2020. Available from: [https://cran.r-](https://cran.r-project.org/package=MuMIn)
518 [project.org/package=MuMIn](https://cran.r-project.org/package=MuMIn)
- 519 55. Nakagawa S, Schielzeth H. Repeatability for Gaussian and non-Gaussian data: a
520 practical guide for biologists. Biol Rev Camb Philos Soc. 2010;85(4):935-956.
521 doi:10.1111/j.1469-185X.2010.00141.x
- 522 56. Hartig F. DHARMA: residual diagnostics for hierarchical (multi-level/mixed) regression
523 models. 2020. <https://cran.r-project.org/package=DHARMA>
- 524 57. Breusch TS, Pagan AR. A Simple Test for Heteroscedasticity and Random Coefficient
525 Variation. Econometrica 1979;47(5):1287–1294. <https://doi.org/10.2307/1911963>
- 526 58. Zuur AF, Ieno EN, Walker N, Saveliev AA, Smith GM. Mixed effects models and
527 extensions in ecology with R. Springer-Verlag New York; 2009.
528 <https://doi.org/10.1007/978-0-387-87458-6>
- 529 59. Pinheiro JC, Bates DM. Mixed-Effect Models in S and S-plus. Springer-Verlag New
530 York; 2000. <https://doi.org/10.1007/b98882>
- 531 60. Woods S. Generalized Additive Models. An Introduction with R (2nd ed.). Chapman &
532 Hall, Boca Raton, FI 2017. <https://doi.org/10.1201/9781315370279>
- 533 61. Douhard F, Gaillard J-M, Pellerin M, et al. The cost of growing large: costs of post-
534 weaning growth on body mass senescence in a wild mammal. Oikos 2017;126(9):1329–
535 1338. <https://doi.org/10.1111/oik.04421>

- 536 62. Briga M, Jimeno B, Verhulst S. Coupling lifespan and aging? The age at onset of body
537 mass decline associates positively with sex-specific lifespan but negatively with
538 environment-specific lifespan. *Exp Gerontol.* 2019;119:111-119.
539 doi:10.1016/j.exger.2019.01.030
- 540 63. Simpson GL. gratia: Graceful 'ggplot'-based graphics and other functions for GAMs
541 fitted using "mgcv". 2019. <https://cran.r-project.org/package=gratia>
- 542 64. Odusanya OO, Alufohai EF, Meurice FP, Ahonkhai VI. Determinants of vaccination
543 coverage in rural Nigeria. *BMC Public Health.* 2008;8:381. Published 2008 Nov 5.
544 doi:10.1186/1471-2458-8-381
- 545 65. Singh PK. Trends in child immunization across geographical regions in India: focus on
546 urban-rural and gender differentials. *PLoS One.* 2013;8(9):e73102. Published 2013 Sep
547 4. doi:10.1371/journal.pone.0073102
- 548 66. Shikuku DN, Muganda M, Amunga SO, et al. Door - To - door immunization strategy
549 for improving access and utilization of immunization Services in Hard-to-Reach Areas:
550 A case of Migori County, Kenya. *BMC Public Health* 2019;19(1):1–11.
551 <https://doi.org/10.1186/s12889-019-7415-8>
- 552 67. Gram L, Soremekun S, ten Asbroek A, et al. Socio-economic determinants and
553 inequities in coverage and timeliness of early childhood immunisation in rural Ghana.
554 *Trop Med Int Health.* 2014;19(7):802-811. doi:10.1111/tmi.12324
- 555 68. Wagner AL, Huang Z, Ren J, et al. Vaccine Hesitancy and Concerns About Vaccine
556 Safety and Effectiveness in Shanghai, China. *Am J Prev Med.* 2021;60(1 Suppl 1):S77-
557 S86. doi:10.1016/j.amepre.2020.09.003
- 558 69. Thomas TL, Caldera M, Maurer J. A short report: parents HPV vaccine knowledge in
559 rural South Florida. *Hum Vaccin Immunother.* 2019;15(7-8):1666-1671.
560 doi:10.1080/21645515.2019.1600986
- 561 70. Kennedy AM, Brown CJ, Gust DA. Vaccine Beliefs of Parents Who Oppose
562 Compulsory Vaccination. *Public Health Reports.* 2005;120(3):252-258.
563 doi:10.1177/003335490512000306
- 564 71. Partouche H, Gilberg S, Renard V, Saint-Lary O. Mandatory vaccination of infants in
565 France: Is that the way forward?. *Eur J Gen Pract.* 2019;25(1):49-54.
566 doi:10.1080/13814788.2018.1561849

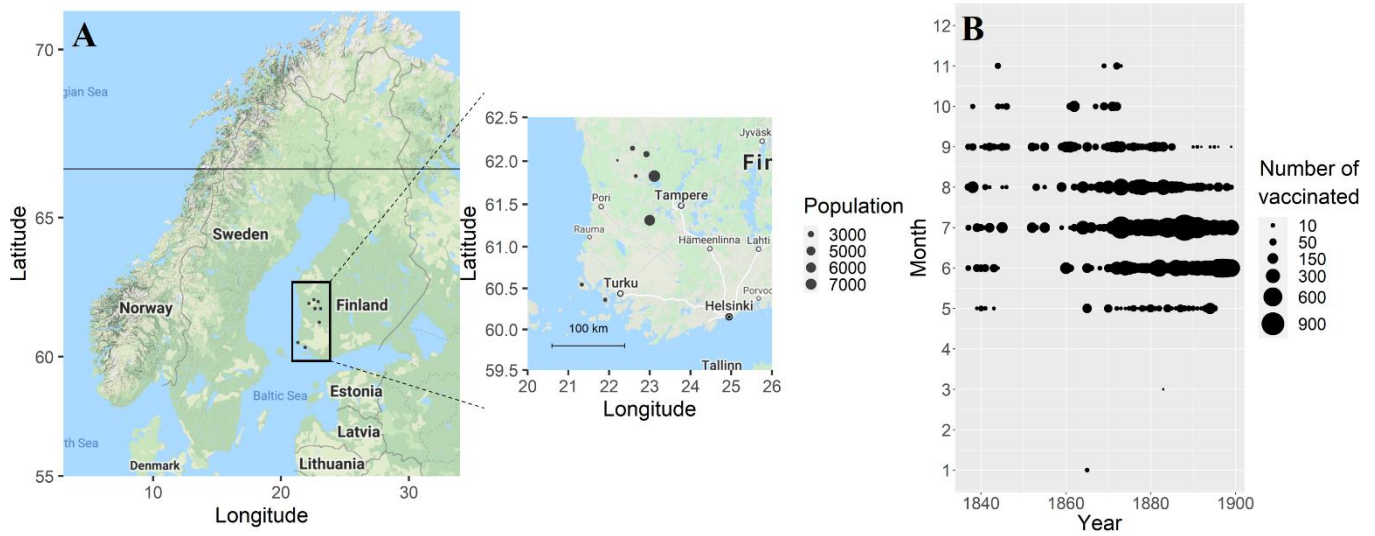
- 567 72. van Wijhe M, McDonald SA, de Melker HE, Postma MJ, Wallinga J. Effect of
568 vaccination programmes on mortality burden among children and young adults in the
569 Netherlands during the 20th century: a historical analysis. *Lancet Infect Dis.*
570 2016;16(5):592-598. doi:10.1016/S1473-3099(16)00027-X
- 571 73. Smith PJ, Marcuse EK, Seward JF, Zhao Z, Orenstein WA. Children and Adolescents
572 Unvaccinated Against Measles: Geographic Clustering, Parents' Beliefs, and Missed
573 Opportunities. *Public Health Rep.* 2015;130(5):485-504.
574 doi:10.1177/003335491513000512
- 575 74. Larson HJ, Jarrett C, Eckersberger E, Smith DM, Paterson P. Understanding vaccine
576 hesitancy around vaccines and vaccination from a global perspective: a systematic
577 review of published literature, 2007-2012. *Vaccine.* 2014;32(19):2150-2159.
578 doi:10.1016/j.vaccine.2014.01.081
- 579 75. Anderson RM, May R. *Infectious diseases of humans: dynamics and control.* Oxford,
580 UK: Oxford University Press; 1991.
- 581

582

Figures and tables

583 Table 1. Overview of the data, where we describe year, population and sample size, average number of vaccinated
 584 per year per parish, average timing and vaccination coverage per age category and interannual and interparish
 585 standard deviation (SD) and coefficient of variation (CV) of vaccination coverage for both pre-mandatory and
 586 mandatory eras. Children were grouped into the following age categories: under 1 year old (age <1) and between
 587 1 and 5 years (from age 1 year until 5 years).

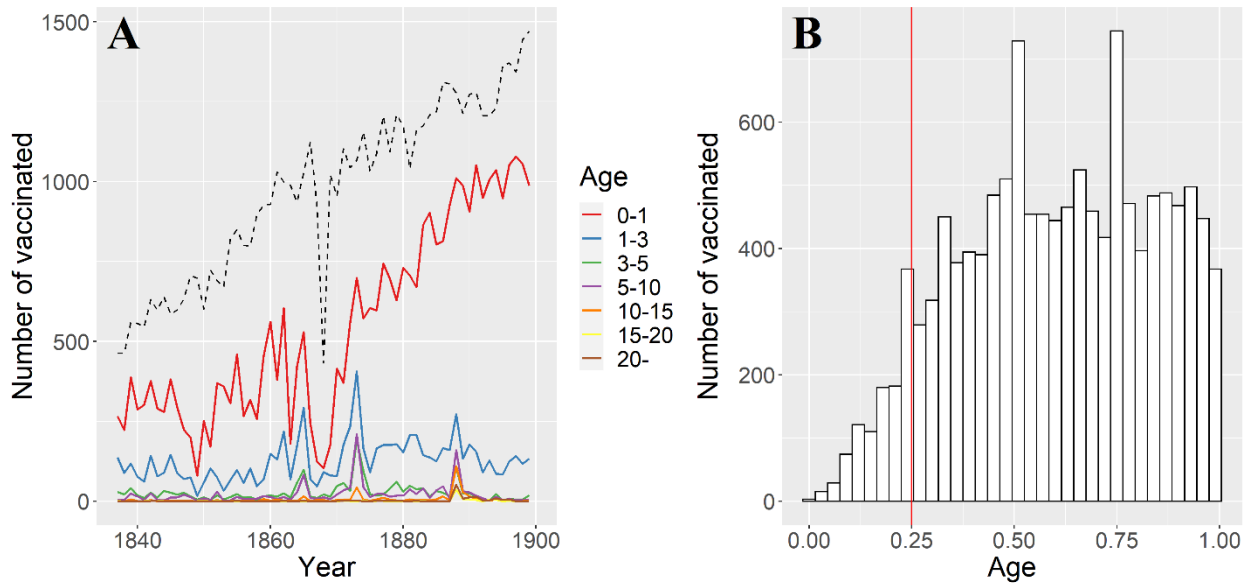
	Pre-mandatory era	Mandatory era
Years	1837-1882	1883-1899
Average population size per parish	2600	3700
N vaccinated	26328	19935
Average n vaccinated per year per parish	108	148
Average [95CI] vaccination month	7.40 ± 0.018 (mid-July)	6.72 ± 0.011 (late June)
Average % of vaccinated under 1 year old	68.1	87.5
Average % vaccinated between 1 and 5 years	16.3	10.3
Interannual and -parish SD of vaccination coverage	27.8	21.5
Interannual and -parish CV of vaccination coverage	40.9	24.6



589

590 Figure 1. Geographical and temporal distributions of the data, showing (A) map of the eight rural parishes in
 591 south-west Finland with a map of Northern Europe on the left and a zoomed-in map of south-west Finland on the
 592 right, and (B) the predominant seasonal timing of annual vaccination campaigns occurring in summer.

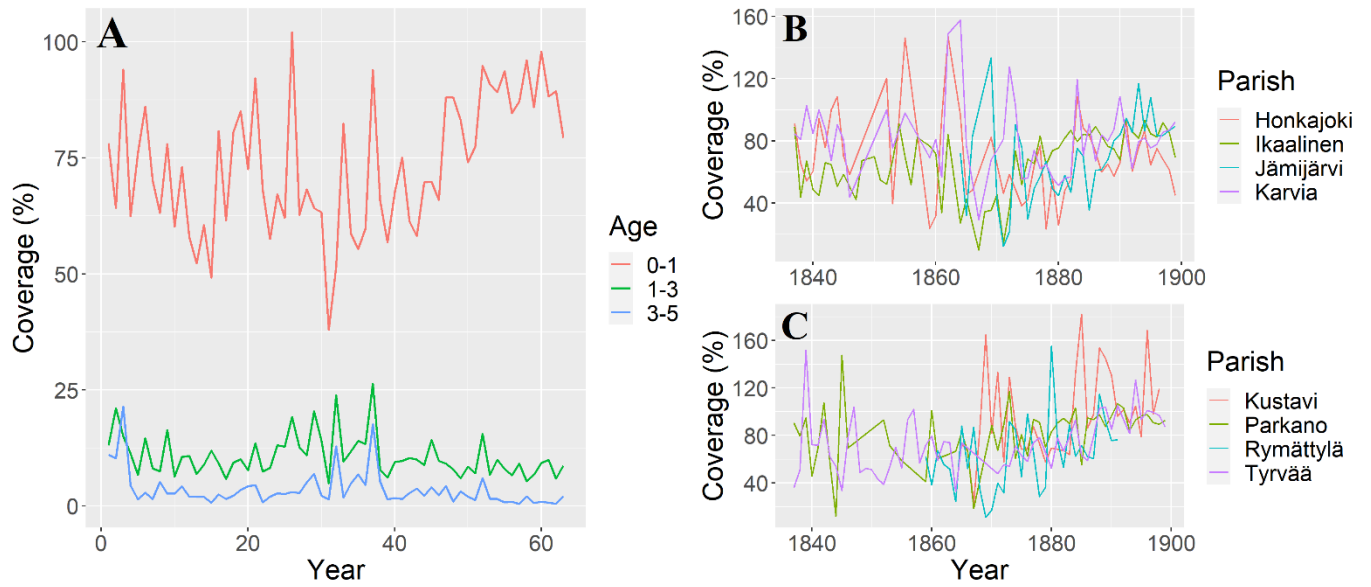
593



594

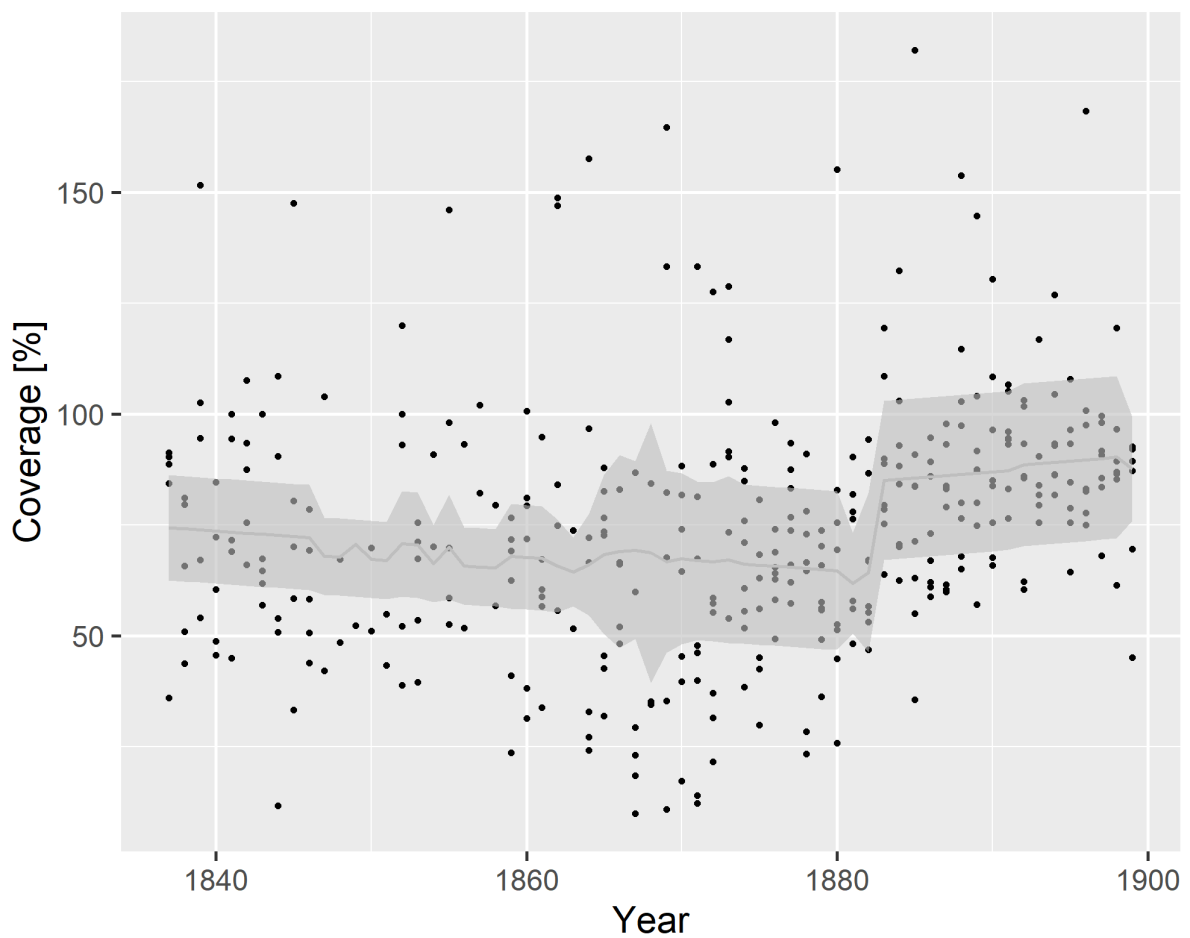
595 Figure 2. Smallpox vaccinations had a preference towards the youngest age groups (A) with no apparent minimum
 596 age (B). The number of vaccinated per age group (A) and age distribution for children under the age of one year
 597 (B). The dashed black line in (A) indicates the number of annual births in the eight study parishes. The red line in
 598 (B) indicates contemporary recommendation for age at first vaccination, which is 3 months in Finland for most
 599 vaccines. For smallpox, the recommended age at first vaccination is one year (39).

600



601

602 Figure 3. The vaccination coverage increased after the introduction of vaccination law in 1883 (A) together with
 603 the decrease in the variance between parishes, which, for illustrative purposes, are shown in two plots (B-C).



604

605 Figure 4. The temporal dynamics in vaccination coverage of children until age one year are best captured by a
 606 threshold model with an increase in vaccination coverage after 1882. Before the threshold, the vaccination

607 coverage decreases with time, while after the threshold there is an increase but the 95% CI of both coefficients
608 overlap with zero and hence are not statistically significant. The predicted values are plotted as a light grey line
609 against the black observed datapoints and the grey bands represent the [95%] confidence intervals.

610

611

612

Supplementary material:

613

The long-term success of mandatory vaccination laws at

614

implementing the first vaccination campaign in 19th century rural

615

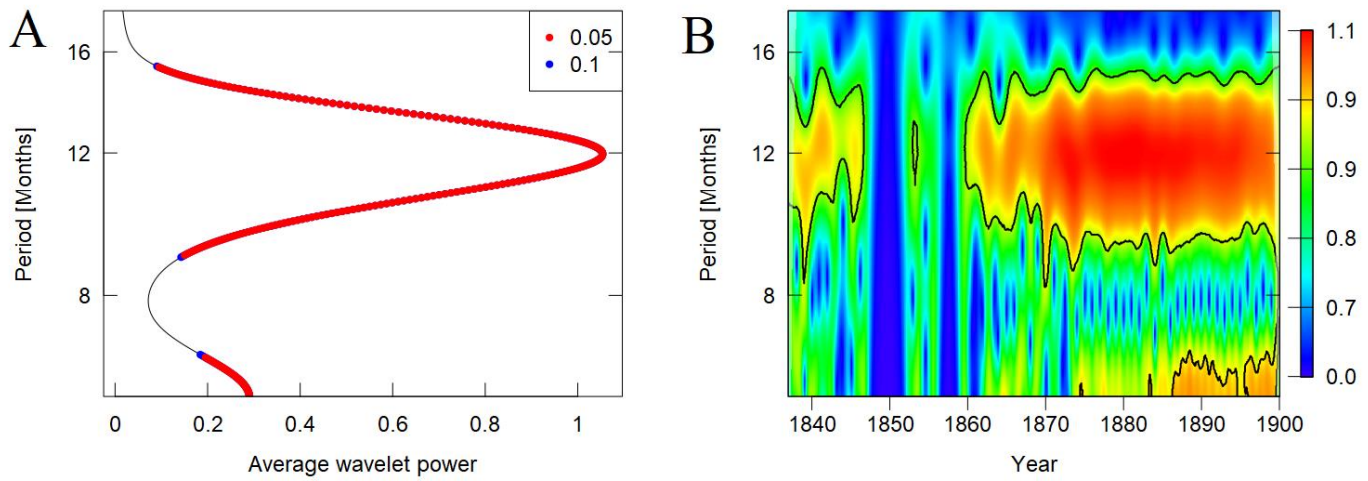
Finland

616

<i>Journal öfver de barn inom Ikaalens mörkjöfvanling, gjorda genom hängjuffer ifrån 1876 i Ikaalinen, enligt hollandska vaccinationen år 1876.</i>												
	Bya	Barnens	Föräldrarnes	Barnens namn och ålder		Vaccination	Granskning	Åkte	Åkte	Åkte	Vaccination	Vaccination
Samlings- ställe	namn	heml.	Namn och stånd.	Mor	Fäder	Månat	dygn	Månat	dygn	Månat	dygn	Resultat
Kattskär.	Höping	Järven 22	J. d. Landt. Pehr Broberg	Johan Broberg	1875	juni	1	juni	8			lyst
		Järven 23	Handlanden A. Leppinen	Johan Leppinen	1875	"	"	"	1			"
		Järven 24	Höfnings. A. Alqvist	Peter Martin	1875	okt	4	"	7			"
		" 25	Handlanden G. Granen	Ela Wilhelmina	1873	juni	7	"	14			"
		" 26	Apotikaren S. Siltanen	Johan Adal f.	1873	"	"	"	"			"
		" 27	Handlanden J. P. Matt	Johan Palmros	1873	"	"	"	"			"
		—	Handlanden J. S. Matt	Lenny Savin	1876	"	"	"	"			"
		—	Handlanden J. S. Matt	Wilhelmina Savin	1876	juli	21	sept	6			"
		—	Handlanden J. S. Matt	Henrik Johansson	1875	juni	9	juni	16			"
		—	Handlanden J. S. Matt	Adolf Wilhelmin	1875	sept	23	sept	30			"
		—	Handlanden J. S. Matt	Carl Eriksson	1875	sept	7	sept	16			"
		—	Handlanden J. S. Matt	Alf Eriksson	1876	"	10	"	17			"
		—	Handlanden J. S. Matt	Aina Davidsson	1875	"	13	"	20			"
		—	Handlanden J. S. Matt	Lenny Granen	1875	"	"	"	"			"
		—	Handlanden J. S. Matt	Maria Granen	1876	"	"	"	"			"
		—	Handlanden J. S. Matt	Johann	1876	"	"	"	"			"
Kattskär.	Kattskär.	Kökevi	Lenny Mattsson	Karl Mattsson	1875	juni	23	juli	1			"
		Pasen	Edo Joh. Parnu	Maria Parnu	1875	"	"	"	"			"
		Kattskär	Handlaren Mattsson	Maria Mattsson	1875	"	"	"	"			"
		Siltanen	Handlaren Mattsson	Johan Mattsson	1875	"	"	"	"			"
		Kattskär	Handlaren Mattsson	Maria Mattsson	1876	"	"	"	"			"

617

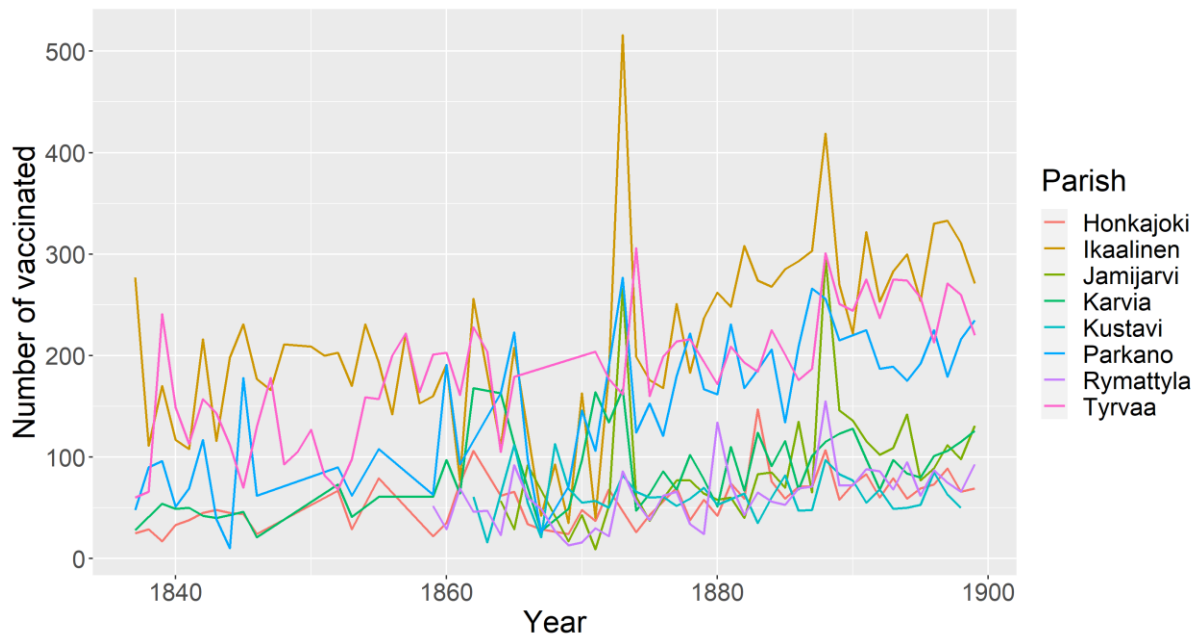
618 Figure S1. Illustration of Finnish historical vaccination records (Community: Ikaalinen, year: 1876, page 1).
 619 Columns represent (from left to right): I, ii, iii: Location, village and house; iv: Name and occupation of the parent
 620 (mother or father); v, vi: Names and birthdate of person called for vaccination; vii, viii: date of vaccination; ix, x:
 621 date of follow-up examination; xi-xiii: success of vaccination (successful, partial or no reaction); xiv-xv: absent
 622 from vaccination or follow-up examination. People who disagreed to vaccination are symbolised by ‘/’ or ‘x’ and
 623 do not have a date (not on this page); xvi: remarks and notes.



624

625 Figure S2. Wavelet periodogram (A) and wavelet power spectrum (B) for season at vaccination show a consistent
 626 average around one year from 1837 until 1899. A) A smaller peak can be observed at 6 months. Red dots represent
 627 significance at the 5% level and blue dots 10% level. The axis describe period in months on the y-axis and wavelet
 628 power levels on the x-axis. B) Legend describes wavelet power levels, where red indicates strong periodicity and
 629 green to blue signals weak periodicity. The blue gaps around 1850-1860 represent a gap in the data from all
 630 parishes at that time. The black line highlights the one-year mark in both plots.

631



632

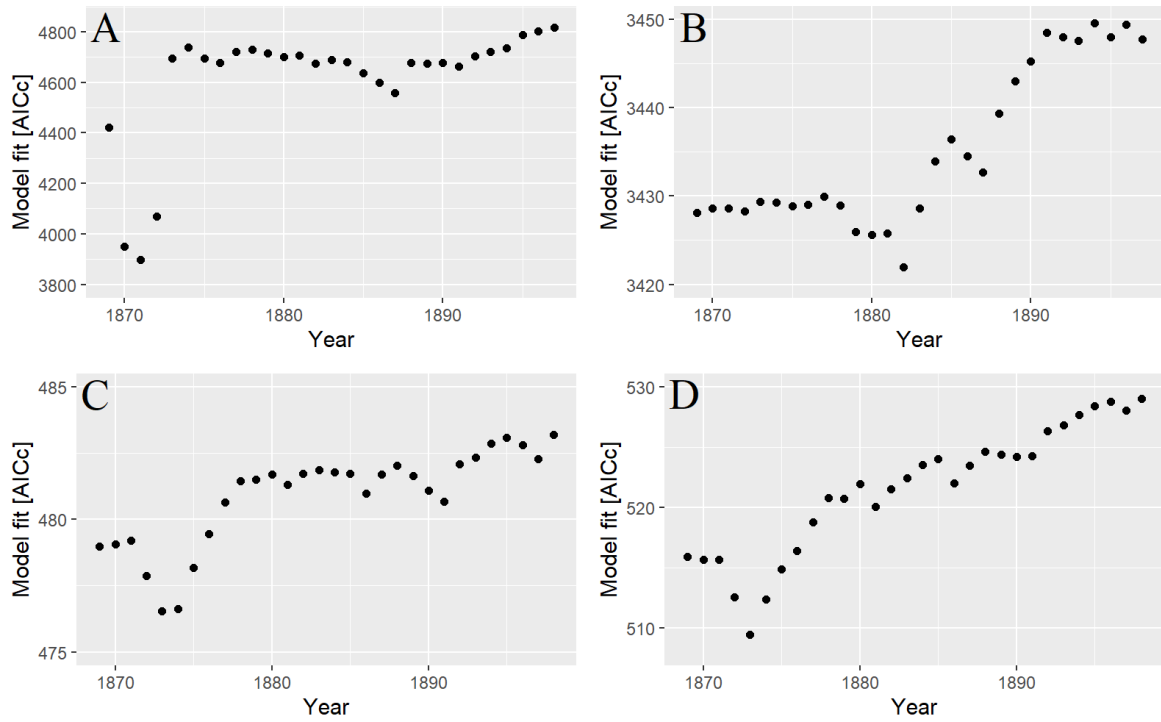
633 Figure S3. The number of vaccinated individuals increased towards the end of the 19th century as monitored from
 634 1837 to 1899.

635

636 Table S1. The model selection table indicated a quadratic increase in the number of vaccinated (count),
637 vaccination coverage and coefficient of variation over time, but was not a significant predictor in standard
638 deviation models. The table describes model type, model intercept, threshold intercept (Intercept2), scaled year
639 coefficient, scaled threshold year coefficient (year2), period (before vs. after the law), model AICc, delta AICc,
640 Akaike weight and threshold year for each dependent variable. The vaccination coverage model in B includes
641 parish as a random variable. Best fitting models are indicated in italic.

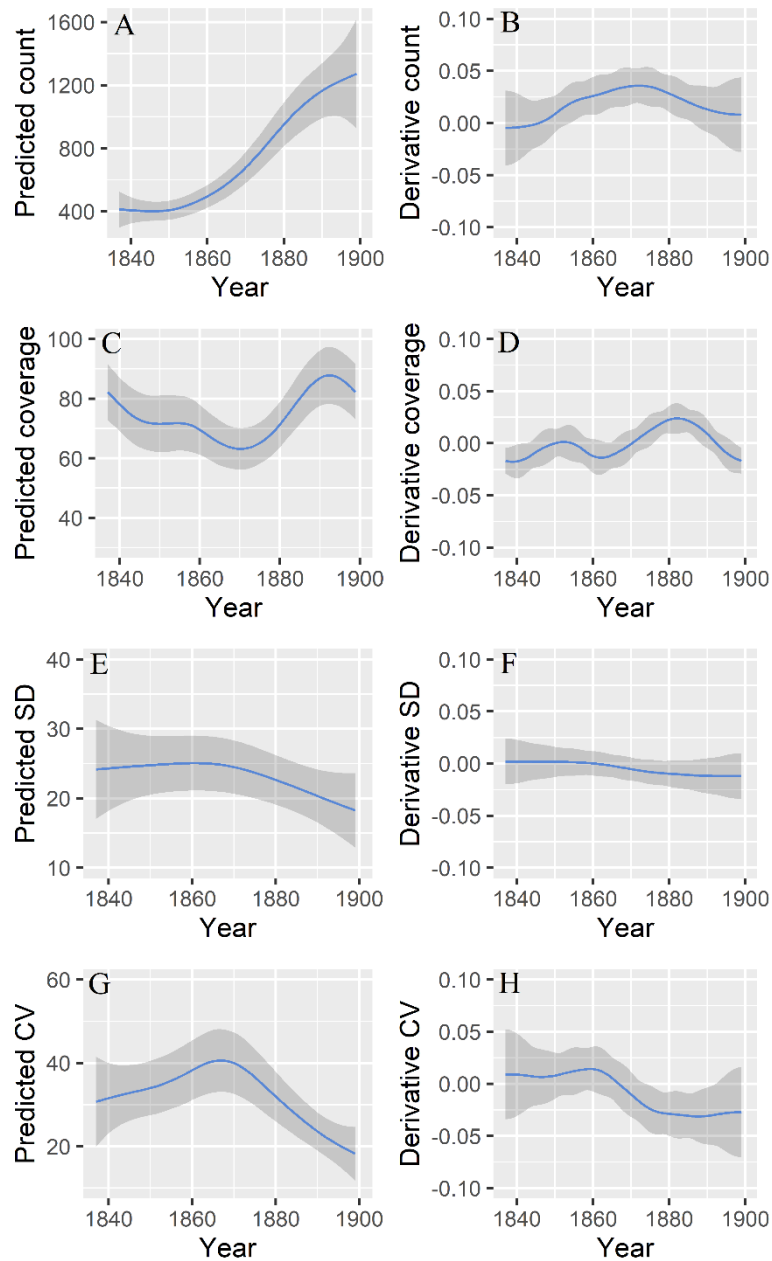
Model	Model output				Model selection			
	Intercept	Intercept2	year	year2	AICc	ΔAICc	weight	threshold
A) Vaccination count								
Linear	6.51		0.43		4892.08	995.02	0.00	
No year-related change	6.60				12781.81	8884.75	0.00	
<i>Threshold</i>	<i>6.22</i>	<i>0.60</i>	<i>0.14</i>	<i>0.041</i>	<i>3897.06</i>	<i>0.00</i>	<i>1.00</i>	<i>1871</i>
B) Vaccination coverage								
Linear	63.33		8.21		3525.57	48.84	0.00	
No year-related change	62.82				3552.65	75.91	0.00	
<i>Threshold</i>	<i>54.13</i>	<i>21.21</i>	<i>-3.02</i>	<i>10.45</i>	<i>3476.73</i>	<i>0.00</i>	<i>1.00</i>	<i>1882</i>
C) Parish-level standard deviation in vaccination coverage								
Linear	23.29		-1.70		475.92	12.22	0.00	
No year-related change	23.26				477.60	13.90	0.00	
<i>Threshold</i>	<i>29.98</i>	<i>-8.73</i>	<i>5.56</i>	<i>-7.05</i>	<i>463.70</i>	<i>0.00</i>	<i>1.00</i>	<i>1873</i>
D) Parish-level coefficient of variation in vaccination coverage								
Linear	32.49		-3.74		520.38	30.13	0.00	
No year-related change	32.43				524.63	25.88	0.00	
<i>Threshold</i>	<i>48.09</i>	<i>-15.70</i>	<i>13.57</i>	<i>-21.17</i>	<i>494.50</i>	<i>0.00</i>	<i>1.00</i>	<i>1873</i>

642



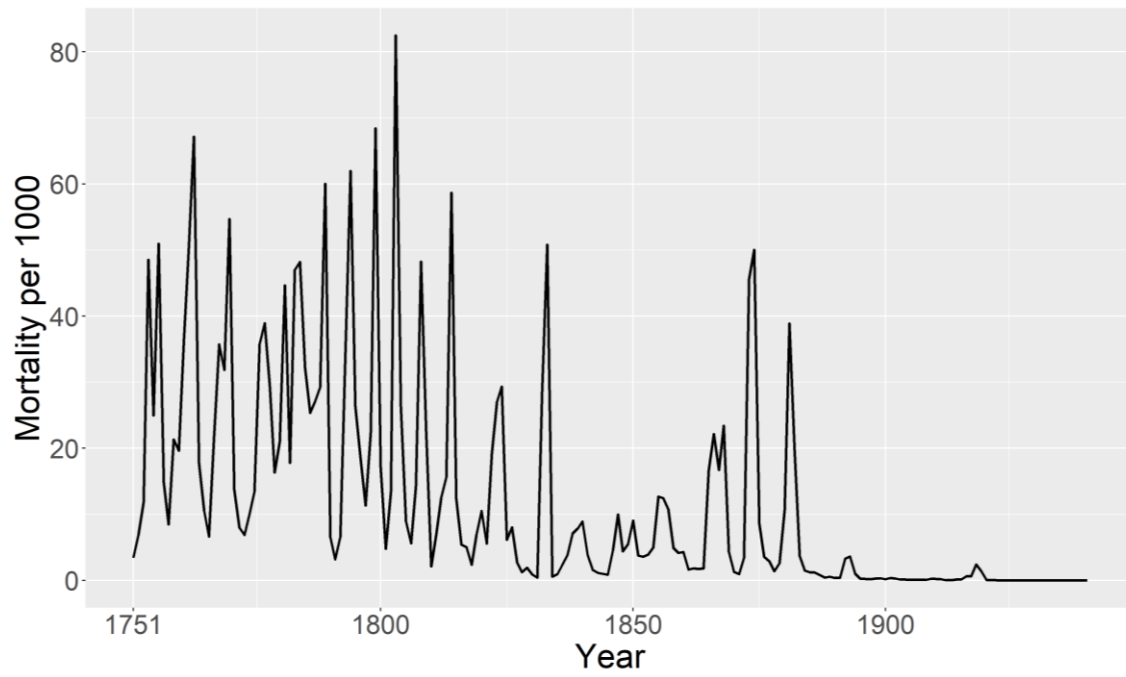
643

644 Figure S4. The number of vaccinated showed statistically significant threshold in 1871 (A, Table S1A), while the
 645 vaccination coverage showed a statistically significant threshold in 1882 (B, Table S1B). Both parish-level SD
 646 and CV models showed a statistically significant threshold in 1873 (C&D, Table S1C&D).



647

648 Figure S5. Gamm models show the steepest increase for number of vaccinated in 1871 (A) and vaccination
 649 coverage in 1882 (C), and for both parish-specific SD and CV a decrease starting from 1873 onwards (E&G).
 650 Shown here are the predicted values (A, C, E, G) and the derivatives of the GAMM models (B, D, F, H) for
 651 vaccination count (eq. model Table S1A; A&B), vaccination coverage (eq. model Table S1B; C&D) and parish-
 652 specific SD (eq. model table S1C; E&F) and parish-specific CV (eq. model Table S1D; G&H). Vaccination
 653 coverage models included parish identity as a random factor. All models used autocorrelation structure AR1 for
 654 year and estimated 95% confidence intervals (grey band) around the predicted slopes (blue line).



655

656 Figure S6. Smallpox mortality in Finland from 1751 to 1940. Original data from Pitkänen, Mielke & Jorde 1989
657 (Appendix Table 1).

658