

Title: Distinct kinetics in antibody responses to 111 *Plasmodium falciparum* antigens identifies novel serological markers of recent malaria exposure

Running title: Serological signatures of malaria exposure

Authors: Yman V^{1,2*}, Tuju J³, White M T⁴, Kamuyu G³, Mwai K^{3,5}, Kibinge N³, Asghar M¹, Sundling C¹, Sondén K^{1,6}, Murungi L³, Kiboi D³, Kimathi R³, Chege T³, Chepsat E³, Kiyuka P³, Nyamako L³, Osier F H A^{3,7#}, Färnert A^{1,6#}

Author Affiliation:

¹ Division of Infectious Diseases, Department of Medicine Solna and Center for Molecular Medicine, Karolinska Institutet, Stockholm, Sweden.

² Department of Infectious Diseases, Södersjukhuset, Stockholm, Sweden

³ Kenya Medical Research Institute - Wellcome Trust Research Program, Centre for Geographical Medicine Research-Coast, Kilifi, Kenya.

⁴ Department of Parasites and Insect Vectors, Institut Pasteur, Paris, France

⁵ Epidemiology and Biostatistics Division, School of Public Health, University of the Witwatersrand, Johannesburg, South Africa.

⁶ Department of Infectious Diseases, Karolinska, University Hospital, Stockholm, Sweden.

⁷ Centre for Infectious Diseases, Parasitology, Heidelberg University Hospital, Heidelberg, Germany.

* **Corresponding author:** Victor Yman, Department of Medicine Solna, Karolinska Institutet, Bioclinicum, Karolinska University Hospital, Solnavägen 30, 171 64 Stockholm. Phone: +46 (0) 709 427290, email: victor.yman@ki.se

Contributed equally

Keywords: Antibody, serological signatures, traveller, longitudinal, malaria, *Plasmodium falciparum*, serology, IgG, exposure.

NOTE: This preprint reports new research that has not been certified by peer review and should not be used to guide clinical practice.
Word Count: Abstract - 147 words, Main text including methods – 5929 words

1 **Abstract**

2 Strengthening malaria surveillance is a key intervention needed to reduce the global disease
3 burden. Reliable serological markers of recent malaria exposure could dramatically improve
4 current surveillance methods by allowing for accurate estimates of infection incidence from
5 limited data. We studied the IgG antibody response to 111 *Plasmodium falciparum* proteins in
6 travellers followed longitudinally after a natural malaria infection in complete absence of re-
7 exposure. We identified a novel combination of five serological markers (GAMA, MSP1,
8 MSPDBL1 C- and N-terminal, and PfSEA1) that detect exposure within the previous 3-
9 months with >80% sensitivity and specificity. Using mathematical modelling, we examined
10 the antibody kinetics and determined that responses informative of recent exposure display
11 several distinct characteristics: rapid initial boosting and decay, less inter-individual variation
12 in response kinetics, and minimal persistence over time. These serological exposure markers
13 can be incorporated into routine malaria surveillance to guide efforts for malaria control and
14 elimination.

15 **Introduction**

16 Reducing the global burden of malaria with the aim of achieving local or regional elimination
17 will require sustained efforts for malaria control ¹. This includes the implementation and the
18 maintenance of high quality malaria surveillance systems that allow control programs to
19 effectively allocate limited resources in their efforts to reduce disease transmission ^{2,3}.

20 Malaria surveillance has traditionally been based on estimates of the number of clinical cases
21 reported through health systems supplemented by data on the local prevalence of infection
22 collected through cross-sectional surveys ⁴. However, estimates of infection incidence based
23 on passive case detection of clinical cases are heavily influenced by the quality of diagnosis
24 and completeness of reporting and are unreliable if asymptomatic infections are common.
25 Furthermore, the usefulness of prevalence surveys decreases substantially as transmission
26 declines and becomes increasingly heterogeneous ⁵⁻⁷.

27
28 Antibody responses are maintained beyond the duration of actual infections and may serve as
29 sensitive markers of past pathogen exposure that can complement traditional surveillance
30 data. Serology has been highlighted as a useful tool for the surveillance of a wide range of
31 infectious diseases, e.g. dengue fever, trachoma, onchocerciasis, malaria and recently
32 COVID-19 where it is being evaluated by public health agencies worldwide ⁸⁻¹¹. For malaria,
33 serological surveillance has proven particularly useful in low transmission settings and
34 antibody responses to a number of *Plasmodium falciparum* antigens, from both pre-
35 erythrocytic and blood-stages, have been evaluated as exposure markers ¹²⁻¹⁵. In particular the
36 responses to merozoite surface protein (MSP) 1 and apical membrane antigen 1 (AMA1) have
37 been found to provide reliable population-level estimates of medium and long-term
38 transmission trends ^{13,16-18}. The responses to these antigens on both population and individual
39 level, however, appear less sensitive to short-term changes in malaria transmission and

40 reliable serological markers of recent exposure are currently lacking^{18,19}. A serological tool
41 that provides information on the magnitude of the individual-level exposure as well as the
42 time frame within which the individual was last exposed could improve surveillance by
43 allowing for estimation of infection incidence from single time-point cross-sectional data²⁰.
44 Such information could be used to monitor transmission intensity and dynamics, trigger
45 intensified surveillance with focused malaria testing and treatment, guide targeted
46 interventions (e.g. using long lasting insecticidal nets or other vector control measures) and
47 subsequently evaluate their impact, or even to demonstrate the absence of transmission
48 (reviewed in Greenhouse et al. 2018 and 2019)^{21,22}.
49
50 On the individual level, the magnitude of the malaria-specific antibody response is highly
51 affected by both the time since last infection and the level of prior exposure^{23,24}. Although the
52 response is generally considered to be short-lived, accumulating data further suggest that the
53 kinetics and the longevity of the response may vary between antigens^{23,25-27}. These
54 observations provide a rationale for attempting to identify a combination of antigens to which
55 the antibody responses display distinct kinetics following infection (i.e. some that are short-
56 lived and others that are more long-lived) and allow for accurate estimation of the timing of
57 the individuals last exposure. However, an effective tool for serological surveillance would
58 have to be limited to include only a few antigens in order to be cost-effective and feasible to
59 implement at scale. Identifying the optimal combination of antigens will require a thorough
60 understanding of the kinetics of each candidate antibody response. Given the scarcity of
61 available data on antimalarial antibody kinetics, efforts should preferably start from screening
62 a large number of candidate antigenic targets for suitability^{26,28,29}.
63

64 To date, only a few studies have attempted to identify markers for individual-level exposure,
65 either by analysing cross-sectional data on antibody reactivity in longitudinally monitored
66 individuals in endemic areas^{26,30–33} or by analysing longitudinal data on antibody responses
67 obtained from infected individuals participating in controlled human malaria infection
68 (CHMI) trials³⁴. Helb et al. used a machine learning approach to identify candidate
69 serological markers of recent infection by analysing cross-sectional data on antibody
70 responses to 655 *P. falciparum* antigens collected at the end of a one-year follow-up of
71 children monitored actively (monthly or three-monthly) and passively for parasitaemia and
72 symptomatic infections, respectively, using microscopic examination of blood slides in an
73 attempt to determine the timing of the last exposure prior to sampling²⁶. However, in an
74 endemic setting this approach is notoriously difficult due to undetected exposure and a high
75 frequency of asymptomatic carriage of low-density sub-microscopic infections³⁵. Although
76 the timing of exposure can be carefully controlled using CHMI, participants in such trials are
77 typically treated at microscopic or PCR patency of blood-stage infection^{36,37} and the immune
78 response observed may not reflect the response following a natural infection³⁸. Furthermore,
79 CHMI studies of only primary infections³⁴ will not capture the effect that repeated parasite
80 exposure may have on antibody profiles and kinetics²⁴. It is possible that these uncontrolled
81 factors may have impacted which candidate serological markers have previously been
82 suggested^{26,30,31,34}.

83

84 With the purpose of studying the acquisition and maintenance of both humoral and cell-
85 mediated immunity to malaria, we have established a well characterised cohort of returning
86 travellers (with different levels of prior malaria exposure) who are followed longitudinally in
87 a malaria free country after successful treatment of a naturally acquired *P. falciparum*
88 infection^{24,39–41}. In contrast to the design of the study by Helb et al.²⁶, samples are collected

89 longitudinally after a known time-point of symptomatic infection. This study design offers a
90 unique opportunity to examine the kinetics of antimalarial immune responses in complete
91 absence of re-exposure. With this near-experimental set-up, we use a newly developed protein
92 microarray (KILchip v1.0⁴²) including 111 *P. falciparum* blood-stage antigens to determine
93 the antigen-specificity and kinetics of the antibody response. We identify novel serological
94 markers of recent malaria exposure and demonstrate how their ability to detect recent
95 exposure depends on the underlying kinetics of each antibody response.

96

97 **Results**

98 Sixty-five adults diagnosed with *P. falciparum* malaria at Karolinska University Hospital in
99 Sweden were enrolled at the time of diagnosis and followed prospectively with repeated
100 blood sampling (i.e. at enrolment, after approximately ten days, and after one, three, six, and
101 twelve months) for up to one year in complete absence of re-exposure. Out of the 65
102 participants, 21 were European natives with no prior history of malaria infection who reported
103 a limited time spent in malaria endemic areas and were considered primary infected. The
104 remaining 44 participants (39 born in Sub-Saharan Africa) reported prior malaria episodes,
105 and prolonged residency in malaria endemic areas, and were considered previously exposed.
106 The two exposure groups did not differ with regards to age, sex, time from symptom onset to
107 diagnosis, parasitaemia, or symptoms of severe malaria (Supplementary Table S1). Antibody
108 responses to 111 *P. falciparum* blood-stage antigens were quantified in all collected sample-
109 series using the recently developed KILchip protein microarray (KILchip v1.0). Antibody
110 responses were largely positively correlated (Supplementary Fig. S1) and while many proteins
111 appeared to be highly antigenic only low-level responses were observed towards others (Fig.
112 1). As expected, the kinetics of the antibody response was antigen-specific but on average the
113 magnitude of the antibody response increased following the acute infection until

114 approximately day 10 (Fig. 2a). After day 10, there was a gradual reduction in the magnitude
115 of the response over time throughout the remainder of the follow-up period. On average,
116 individuals with prior malaria exposure displayed a greater magnitude of the response (Fig.
117 2a). A similar pattern was observed for the breadth of the response (i.e. the number of
118 antigens to which an individual is seropositive), with the peak in breadth occurring
119 approximately 10 days after the acute infection (primary infected: median = 17, range 7-71;
120 previously exposed: median = 26, range 11-77) (Fig. 2b). Although none of the participants
121 were seropositive for all antigens at any time-point, a majority of previously exposed
122 individuals acquired and maintained a substantially greater breadth of the response at the end
123 of follow-up (primary infected: median = 2, range 0-10; previously exposed: median 3, range
124 0-42) (Fig. 2b).

125

126 *Exposure-dependent differences in the magnitude and antigen-specificity of the response*

127 Linear mixed-effects regression models were used to examine differences in the magnitude of
128 the antigen-specific responses between the primary infected and the previously exposed
129 individuals. The previously exposed individuals displayed significantly greater reactivity than
130 the primary infected individuals toward 56 of the 111 antigens at the time of diagnosis, 54 at
131 day 10, 32 at 1 month, 37 at three months, and 44 antigens at both 6 and 12 months of follow-
132 up (Fig. 2c). Compared to primary infected individuals, individuals with prior exposure
133 displayed a greater magnitude of the response to AMA1, erythrocyte-binding antigen (EBA)
134 175, EBA181, H101, MSP1 Block 2 (K1, MAD20, and RO33 like types) and MSP2 (full-
135 length as well as FC27 and 3D7 type fragments) antigens, as well as to MSP4, MSP7, MSP9,
136 merozoite surface protein duffy binding-like (MSPDBL) 2 C-terminal, Pfl13, P38, RhopH3,
137 serine repeat antigen (SERA) 3, SERA4, SERA7, and SERA9 at all time-points (Fig. 2c,
138 Supplementary Table S2). In general, the fold-difference in antibody reactivity was greater at

139 diagnosis and at the end of the follow-up (Fig. 2c). The observed differences, particularly at
140 diagnosis and at the end of follow-up, indicate a more rapid induction of antibody production
141 and better antibody maintenance upon antigenic re-stimulation suggesting the development of
142 a memory response towards these antigens with repeated exposure. The differences in the
143 magnitude of the response at each of the time-points are presented in full within the
144 supplementary material (Supplementary Table S2).

145

146 ***Individual antibody responses most informative of recent exposure***

147 What is considered a recent exposure to infection may vary depending on the epidemiological
148 setting and the purpose of a particular investigation but, in the context of *P. falciparum*, this is
149 often defined as exposure having occurred within the past 3 to 6 months^{22,43}. For the main
150 analysis, samples were treated as independent and a recent exposure was defined as the
151 infection having occurred within 3 months (i.e. 90 days) of sample collection. Consequently,
152 samples collected within 3 months of the acute infection were categorised as obtained from
153 individuals recently exposed to infection whereas the remaining samples were not. This
154 enabled the analysis of a balanced number of samples collected both before (52.5%) and after
155 (47.5%) this temporal threshold within the one-year follow-up. Because a useful serological
156 marker of recent exposure will need to accurately identify recently infected individuals
157 regardless of their prior level of exposure, data from both exposure groups were analysed
158 jointly. Receiver operating characteristics (ROC) analysis was applied to evaluate whether a
159 threshold level of the antibody response towards a single antigen could be used to accurately
160 classify if a given sample was obtained from a recently exposed individual. The analysis was
161 performed separately for each antibody response and the performance of the classifiers was
162 compared based on the classifier area under the ROC curve (AUC) (Fig. 3). Data on antibody
163 levels towards several individual antigens were able to classify samples as obtained from

164 individuals exposed within the past 3 months with comparable degrees of accuracy (Fig. 3).
165 The best classification performance was obtained using the antibody response towards GPI-
166 anchored micronemal antigen (GAMA) for which the AUC was 0.83 (95% CI: 0.76 – 0.90)
167 reaching a sensitivity and specificity of 77%. Within this particular cohort this corresponded
168 to an accuracy of 76% and a positive predictive value of 78% and a negative predictive value
169 of 74%. Similar results were obtained using antibody responses towards *Plasmodium*
170 translocon for exported proteins (PTEX) 150 (AUC= 0.82; 95% CI: 0.75 – 0.87),
171 PF3D7_1136200 (AUC = 0.81; 95% CI: 0.75 – 0.88), and schizont egress antigen (*Pf*SEA-1)
172 (AUC = 0.8; 95% CI: 0.73 – 0.87) for which the AUCs all exceeded 0.8 (Fig. 3,
173 Supplementary Table S3). In addition, the response towards MSP8, apical sushi protein
174 (ASP), PF3D7_0206200, MSP7-related protein (MSRP) 4, the 3D7 allelic variant of MSP3,
175 and MSP1 Block 17 were among the top 10 most informative. However, for a majority of
176 responses the classification performance was relatively poor (Fig. 3, Supplementary Table
177 S3).

178 A sensitivity analysis was performed to examine whether other antibody responses would
179 have been more informative if an alternative definition of recent exposure had been used. The
180 analysis was therefore repeated using several definitions of a recent exposure (i.e. exposure
181 having occurred within 1 month, 2, 3, 4, 6, and 8 months of sample collection). Although, the
182 classifier AUCs varied depending on the definition, the same antibody responses (i.e. towards
183 GAMA, PTEX150, MSRP4, *Pf*SEA-1, ASP, PF3D7_1136200 and MSP1 [Block 17]) were
184 consistently identified among the top 10 responses providing most accurate identification of
185 recent exposure (Supplementary Fig. S2).

186

187 ***Combining data on multiple antibody responses to improve predictive accuracy***

188 Combining data on antibody responses towards multiple antigens could theoretically improve
189 the ability to accurately identify recently exposed individuals. Feature selection using a
190 Boruta algorithm was performed to reduce the number of potential combinations to evaluate
191 by selecting only those antibody responses contributing significant information on recent
192 exposure when analysed together for further analysis. The algorithm, which is a wrapper
193 algorithm based on a random forest classifier, was applied jointly to the full antibody data set.
194 It identified 28 antibody responses contributing significant information to classification of
195 recent exposure that were further evaluated (Fig. 4a). Similar to the results based on the
196 threshold antibody level towards a single antigen, the Boruta algorithm identified that the
197 greatest relative importance for classification was contributed by the response towards
198 GAMA, *Pf*SEA1, PF3D7_1136200, PTEX150, and MSP8 (Fig. 4b).
199 Random forest classifiers were applied to identify a panel of up to five antibody responses
200 most informative in identifying recent exposure. The classification performance of all
201 possible two- to five-way combinations of the 28 selected responses was exhaustively
202 evaluated. There was a gradual increase in classifier performance, as indicated by an increase
203 in the cross-validated AUC, with the sequential increase in panel size from two to five
204 antibody responses. However, each increase in panel size lead to a smaller improvement in
205 classifier performance (Supplementary Fig. S3). The antibody response to GAMA was
206 included in all of the best combinations of two to four antibody responses (Supplementary
207 Fig. S3). The overall best classification performance, with a cross-validated AUC of 0.89
208 (95% CI: 0.85 – 0.94) and reaching a sensitivity and specificity of 83%, was obtained for a
209 panel of five antibody responses that included the response to GAMA, MSP1 (full length),
210 both the C- and N-terminal of MSPDBL1, and *Pf*SEA1 (Fig. 4b). This corresponded to an
211 accuracy of 83% and positive and negative predictive values of 84% and 82%, respectively.

212 The responses to GAMA, MSP1 and the N-terminal of MSPDBL1 were included in all of the
213 top 10 most informative panels of size five, and *Pf*SEA1 was included in 8 of the top 10
214 panels. The classification performance of the top 10 antibody panels was highly comparable
215 with AUCs ranging from 0.88 (95% CI: 0.83 – 0.94) to 0.89 (95% CI: 0.85 – 0.94). The
216 random forest classifier based on a combination of five antibody responses provided a
217 significant improvement in classification accuracy compared to a simple classifier based on a
218 threshold antibody level to GAMA alone (McNemar’s test: $p < 0.001$). However, no
219 improvement was obtained using a random forest classifier fitted jointly to data on all
220 antibody responses (Cross-validated AUC: 0.83; 95% CI: 0.74 – 0.89).

221 As an additional evaluation of the robustness of the results obtained using random forest
222 classifiers, the analysis was repeated using logistic regression. The results based on logistic
223 regression classifiers were highly comparable to those obtained using random forests and are
224 presented within the supplementary material (Supplementary Fig. S4).

225

226 *Identifying the antibody kinetic properties of a useful serological marker of recent* 227 *exposure*

228 Certain antibody responses (e.g. to GAMA and *Pf*SEA-1) were clearly more informative and
229 more useful as serological markers of recent exposure than others, both independently and in
230 combinations including multiple responses. A previously validated antibody kinetic model
231 was applied to quantitatively describe the kinetics of each antibody response to determine if
232 there were underlying kinetic properties shared among informative and non-informative
233 responses. The model, which captures the inter-individual variation in boosting and decay in
234 antibody levels following infection while estimating the average value and variance in the
235 kinetics across the entire cohort, was fitted separately to data for each antibody response in a
236 Bayesian framework using mixed-effects methods. The model-estimated population-level

237 parameters and corresponding variance parameters as well as the individual level parameters
238 are presented for all antibody responses within supplementary information (Supplementary
239 Tables S4 and S5). An overview of the different kinetic patterns observed is presented in Fig.
240 5 which includes data and model fits for two representative individuals as well as the model-
241 estimated population-averaged kinetics of the responses towards three antigens, GAMA,
242 EBA175, and PF3D7_1252300, which were identified as highly, moderately, and minimally
243 informative of recent exposure, respectively. The major antibody kinetic patterns observed
244 were: i) a rapid increase and decay following infection with limited differences between
245 individuals with and without prior exposure (Fig 5A) ii) a rapid increase and decay following
246 infection but with substantial differences between individuals with and without prior exposure
247 (Fig 5B) iii) a limited boosting and decay following infection with or without differences
248 between individuals with and without prior exposure (Fig 5C).

249
250 To be able to present a meaningful comparison of the different kinetics (i.e. the specific
251 boosting and decay patterns) across all of the antigen-specific responses, a summary metric of
252 the individual-level antibody kinetics for each participant and antibody response was
253 generated by calculating the relative reduction (%) in antibody levels over the 1-year follow-
254 up. The median relative reduction, as well as the inter-individual variation, differed
255 substantially between antibody responses (Fig. 6). The greatest relative reductions were
256 estimated for the highly antigenic proteins, e.g. GAMA and PF3D7_1136200, while the
257 smallest relative reductions were estimated for poorly antigenic proteins, e.g.
258 PF3D7_1343700.KELCH and MSRP5 (Fig. 6). All of the antibody responses that had
259 individually been identified among the top 10 most informative in identifying recent exposure
260 (i.e. GAMA, PTEX150, PF3D7_1136200, *Pf*SEA-1, MSP8, ASP, PF3D7_0206200, MSRP4,
261 MSP33D7, Block 17 of MSP1) exhibited a substantial relative reduction in antibody levels

262 during follow-up (Fig. 6). For a given antibody response, there was a close association
263 between the estimated relative reduction in antibody levels over time and the performance
264 (AUC) of the corresponding classifier of recent infection (Fig. 7). For the top 10 individually
265 most informative responses, there was a limited inter-individual variation in the reduction in
266 antibody levels over time as well as limited differences between individuals with different
267 levels of prior malaria exposure and thus a consistent boosting and decay of the response
268 across individuals (Fig. 6, Supplementary Fig. 5a and b).

269 Discussion

270 Novel and improved tools for malaria transmission surveillance are urgently needed to assist
271 effective allocation of limited resources for malaria control and assure continued progress
272 towards malaria elimination³. There is a particular need for methods that can detect recent
273 exposure to infection on the individual level which can be used to generate accurate estimates
274 of infection incidence using limited samples and data^{20–22}. Here, we screened plasma samples
275 from 65 travellers followed prospectively for up to one year after a naturally acquired *P.*
276 *falciparum* infection for IgG antibody responses towards 111 blood-stage antigens. Using a
277 data driven approach, we identified novel candidate serological exposure markers individually
278 informative of recent exposure and demonstrate that combining data on five responses allow
279 for accurate detection of recent exposure to *P. falciparum* within the prior 3-month period.
280 Based on a modelling approach, we then quantitatively examined the kinetics of each
281 individual antibody response and were able to characterise the kinetic properties that make a
282 particular antibody response useful as a serological marker of recent *P. falciparum* exposure.
283
284 When examining each of the 111 antibody responses individually, we found that the level of
285 the response to several antigens, in particular GAMA, PTEX150, PF3D7_1136200, and
286 *Pf*SEA1, were informative and could be used to identify a recent exposure with comparable
287 accuracy (Classifier AUCs all exceeding 0.8). The response to GAMA was most informative
288 and it was possible to identify a threshold antibody level such that recently exposed
289 individuals could be identified with a sensitivity and specificity of 77%. The required
290 sensitivity and specificity of a particular surveillance system, and the optimal trade-off
291 between them, should be dictated by the objective of the system, the activity the system is
292 supposed to trigger, the availability of resources and cost of possible interventions^{22,44,45}. The
293 level of accuracy in detection of recent exposure achievable using a single antibody response

294 could be acceptable for effective serosurveillance of population-level transmission trends
295 where e.g. a lower sensitivity can be acceptable given that it remains constant over time^{46,47}.
296
297 We demonstrated that the ability to accurately detect recent exposure could be significantly
298 improved if data on up to five antibody responses were analysed simultaneously using a
299 random forest algorithm. We found that the best performance was obtained based on a panel
300 of five antibody responses (AUC = 0.89), reaching a sensitivity and specificity of 83%. There
301 was no single best antibody combination, instead many panels composed of five antibody
302 responses provided comparable results. All of the top 10 panels included responses that had
303 individually been identified as highly informative (e.g. to GAMA and *Pf*SEA-1), suggesting
304 that proteins that can identify recent infections when used individually also do well in
305 combinations. Interestingly, however, they also included responses that were individually not
306 among the more informative (i.e. to MSP1 and either one or both of the N- and C-terminal of
307 MSPDBL1) suggesting that these responses contribute additional information when used in
308 combination with individually informative responses.

309
310 The antibody responses to most of the proteins that we identified as informative of recent
311 exposure have to date not been extensively studied. Among our top 28 candidates, which were
312 informative either individually or in combination, only the responses to *Pf*SEA-1, PTEX150,
313 MSP1 (19 kDa fragment and full length), MSP2 and MSP10 have to our knowledge
314 previously been suggested as markers of recent or concurrent infection^{26,27,30,32,34,48}. The
315 response to MSP4 and SERA4 have recently been suggested as markers of recent exposure
316 based on data from primary infections in CHMI trials^{34,49}. However, in our study we did not
317 find the response to MSP4 or SERA4 informative and throughout the follow-up we observed
318 substantially greater levels of the response to these antigens in previously exposed compared

319 to primary infected individuals. We observed similar patterns for AMA1, EBA175, EBA181,
320 H101, MSP1 (Block 2) and MSP2 antigens, as well as to MSP7, MSP9, MSPDBL2 C-
321 terminal, Pf113, P38, RhopH3, SERA3, SERA7, and SERA9 and believe that the prior
322 exposure-related differences in the response to all of these antigens suggest they may also (to
323 varying extents) reflect cumulative malaria exposure. This is corroborated by other studies
324 where this has been extensively demonstrated for AMA1, MSP1 (Block 17) and MSP2
325 ^{13,18,24,32,48,50,51}, and to some extent also reported for EBA181, MSP1 (Block 2), MSP4, MSP7,
326 MSP10, and SERA4, to which the magnitude of the response increases significantly with age
327 in populations living in areas with on-going malaria transmission ^{26,30,31,51-53}. Furthermore, the
328 differences in the antigen-specificity and breadth of the response in primary versus re-
329 infection contribute interesting information regarding antibody acquisition and maintenance
330 that may provide insights regarding the development of malarial immunity. However,
331 investigating the immunological determinants of the observed differences was not among the
332 objectives of the present study and will therefore be explored elsewhere.

333

334 It has been suggested that what determines the usefulness of any particular response as a
335 marker of recent exposure is not just the average of its boosting or decay following infection
336 but also the variation in these qualities across individuals ²². When studied individually,
337 several antibody responses (e.g. to GAMA, PTEX150, PF3D7_1136200, *Pf*SEA-1, and
338 MSP8) were consistently identified as the most informative in detecting recent exposure,
339 suggesting they may share common properties with regards to their kinetics. Because of the
340 longitudinal design of the study, we were able to examine the kinetics of each antibody
341 response in detail using a previously validated mathematical model ^{23,24}. This allowed us to
342 quantitatively characterise both the antibody boosting and decay, its inter-individual variation
343 as well as its dependency on prior malaria exposure and to identify three key aspects that

344 make a particular antibody response a useful serological marker of recent exposure: i) a rapid
345 boosting and decay in antibody levels following clearance of infection ii) limited inter-
346 individual variation in the kinetics (boosting and decay) of the response and therefore
347 predictable kinetics iii) minimal impact on the kinetics due to prior exposure and a limited
348 formation of an antibody memory response. We could also show that antibody responses that
349 were not informative of recent exposure did not exhibit this behaviour and thereby explicitly
350 demonstrate how the ability to identify recent exposure using serology is based on an
351 understanding of the underlying antibody kinetics.

352

353 In the present study we have intentionally focused solely on serology with the aim of
354 identifying a panel of antibody responses that can accurately detect recent *P. falciparum*
355 exposure without the use of additional data. In a surveillance context, data obtained from
356 these serological markers of recent exposure could easily be combined with parasitological
357 data as has been previously demonstrated for sero-surveillance of *P. vivax*, where Longley
358 and White et al. identified candidate serological exposure markers that can be used to detect
359 recent exposure infection³³, as well as for infectious disease surveillance in animal
360 populations²⁰. Furthermore, if a serological assay is to be implemented at scale for field
361 based surveillance it could preferably be developed into a multicomponent serological lateral
362 flow immune-chromatographic point-of-care test. In such a setup, serological detection could
363 be effectively integrated with parasite detection e.g. using ultrasensitive antigen detection
364 ^{32,54,55}.

365

366 The unique longitudinal design of this study, in which the exact time-point of natural
367 exposure is known and where the absence of re-exposure during follow-up can be guaranteed,
368 avoids misclassification of true exposure status thereby limiting bias and providing a unique

369 opportunity to identify markers of recent exposure. Furthermore, including individuals who
370 are both primary infected and previously exposed allowed us to ascertain that our candidate
371 serological markers were able to perform equally well independently of the individuals prior
372 level of exposure. This in turn suggests that identified candidate responses could be suitable
373 for exposure monitoring through a wide range of transmission settings^{22,56}. We firmly believe
374 that further evaluation and validation of these candidate serological markers of recent
375 exposure is warranted and aim to pursue this using a range of immunoassay platforms and by
376 performing additional validation using samples collected from longitudinally followed and
377 closely monitored populations living in malaria endemic areas.

378

379 In summary, we identify novel candidate serological markers of recent exposure that, when
380 quantified individually or in combination in a single plasma sample, provide information on
381 when the donor was last exposed to *P. falciparum* infection. Using both a data driven and a
382 modelling approach, we demonstrate that a recent exposure is not necessarily identified by a
383 complex antibody signature that requires sophisticated algorithms for detection but rather by a
384 thorough understanding of the kinetics of the antibody response to limited number of
385 antigens. We show that the antibody responses towards highly antigenic proteins that,
386 regardless of the number of prior infections, demonstrate predictable boosting and decay
387 following a new infection are sufficient to detect whether a given individual has been exposed
388 within a defined period of time. These novel serological markers generate information that
389 can be used for malaria control purposes to understand when and where to intensify
390 surveillance, perform targeted testing and treatment, and/or deploy vector control measures,
391 and thereby effectively improve efforts to limit transmission and accelerate progress towards
392 malaria elimination.

393 **Methods**

394 **Study population**

395 Study participants were recruited at Karolinska University Hospital in Stockholm, Sweden.
396 Adults with *P. falciparum* malaria were enrolled at the time of diagnosis and followed
397 prospectively for up to one year with repeated blood sampling. Venous blood samples were
398 collected at the time of enrolment (i.e. at diagnosis) and follow-up samples were collected
399 approximately ten days, and one, three, six, and twelve months after the first sample. In total,
400 242 samples were collected from 65 participants. Data on country of birth, previous countries
401 of residence, travel history, use of antimalarial prophylaxis, previous malaria episodes and co-
402 morbidities was collected using a questionnaire administered to each study participant upon
403 enrolment as well as at the end of the follow-up period. Additional clinical data were
404 extracted from hospital records ²⁴.

405

406 **Ethics statement**

407 The study was approved by the Ethical Review Board in Stockholm, Sweden (Dnr 2006/893-
408 31/4 and 2013/550-32/4, 2018/2354-32, 2019-03436) and written informed consent was
409 obtained from all study participants.

410

411 **Protein microarray (KILchip v1.0)**

412 The KILchip v1.0 protein microarray was used for simultaneous quantification of IgG
413 antibody responses to 111 *P. falciparum* antigens ⁴². The microarray includes 82 full-length
414 proteins (or for multi-membrane proteins, the largest predicted extracellular loop) and 29
415 protein fragments from 8 unique proteins (i.e. MSP1, MSP2, MSP3, MSPDBL1, MSPDBL2,
416 *Pf*SEA-1, PF3D7_06293500 and SURFIN 4.2). A majority of proteins were produced using a
417 mammalian expression system, while a minority were produced in *Escherichia coli*. Further

418 details regarding the microarray method are described elsewhere⁴². Plasma samples were
419 analysed in 1:400 dilution and bound antibody was detected using AlexaFluor⁶⁴⁷ conjugated
420 donkey anti-human-IgG. The processed microarray slides were read at 635 nm using a
421 GenePix® 4000B scanner (Molecular Devices) and results obtained using the GenePix® Pro
422 7 software (Molecular Devices). Positive and negative controls consisting of pooled plasma
423 from malaria exposed Kenyan adults and serum samples from malaria unexposed northern
424 European donors, respectively, were run on each slide. A 3-fold serially diluted standard
425 calibrator consisting of purified IgG from highly malaria exposed Kenyan donors was assayed
426 once within each batch.

427

428 **Data analysis**

429 *Data acquisition, cleaning and normalisation*

430 R (R: A language and environment for statistical computing, v3.4.4 and v3.6.1) was used for
431 data processing, normalization, and analyses. The median fluorescent intensities (MFI) of the
432 local spot background surrounding each spot was subtracted from the MFI of each antigen
433 spot. The mean MFIs of replicate spots were log-transformed to yield an approximate
434 Gaussian distribution of signal intensities. To account for technical slide-to-slide and batch-
435 to-batch variation a two-step normalisation process was applied according to previously
436 described procedures^{57,58}. First, to account for within batch slide-to-slide effects, a Robust
437 Linear Model (RLM) was fitted to the log-transformed data from the positive control samples
438 assayed on each slide. This was done separately for data from each batch⁵⁷. After obtaining
439 the best-fit parameters for the slide effect the estimated coefficients for each slide was
440 subtracted from all spots within each slide. Following this within-batch RLM normalisation, a
441 second between-batch RLM normalisation was performed using data for the serially diluted
442 standard calibrator. Data for all target antigens that did not demonstrate optical saturation or

443 no signal was used for normalisation in both steps. A threshold of seropositivity was defined
444 as the mean reactivity + 3SD of the 42 negative controls. The breadth of the response within
445 each tested sample was defined as the number of antigens for which the reactivity exceeded
446 the seropositivity threshold.

447

448 *Exposure dependent differences in geometric mean antibody responses*

449 Linear mixed effects regression models were used to identify antigens to which responses
450 were significantly different between primary infected and previously exposed individuals at
451 each sampling time-point. The models were fitted separately to the log-transformed
452 normalised MFI data for each antigen. To account for the false discovery rate (FDR) due to
453 testing such a large number of hypotheses all p-values were FDR-adjusted according to the
454 procedures described by Benjamini and Hochberg⁵⁹. FDR adjusted p-values of <0.05 were
455 considered significant.

456

457 *Identifying antibody responses informative of recent exposure to infection using binary* 458 *classification based on single antibody responses*

459 For the purpose of the main analysis a recent exposure was defined as the infection having
460 occurred within 3 months (i.e. 90 days) of sample collection. All samples were categorised as
461 obtained from either a “recently infected” or “not recently infected” individual depending on
462 whether or not they were collected within this specified time frame. To evaluate if the
463 antibody response to any single *P. falciparum* antigen was informative of recent exposure,
464 binary classification using a threshold antibody level was applied to the data for each of the
465 111 antigens individually using ROC analysis. The AUC was used to compare the
466 classification performance of the individual antibody responses and confidence intervals for

467 the AUCs were estimated using DeLong's algorithm⁶⁰. Alternate definitions of recent
468 exposure were also evaluated as part of a sensitivity analysis.

469

470 *Feature selection using a Boruta algorithm*

471 Combining data on multiple antibody responses could theoretically improve the ability to
472 accurately identify recent exposure, however, there are 2^{111} potential unique combinations of
473 antibody responses to 111 antigens and to evaluate them all was not feasible⁶¹. To reduce the
474 number of tentative antibody response combinations to evaluate, feature selection was
475 performed using a Boruta algorithm as previously described⁶². The Boruta algorithm is a
476 wrapper method built around a random forest classifier that performs a top-down search for
477 relevant features, while progressively eliminating irrelevant features, by comparing the
478 importance of original features with the importance achievable at random (estimated using
479 permuted copies of the original features). The algorithm was fitted jointly to antibody data to
480 all 111 antigens.

481

482 *Identifying combinations of antibody responses informative of recent exposure to infection* 483 *using random forest classification*

484 Following feature selection, random forest classifiers were fitted exhaustively to all possible
485 two- to five-way combinations of the down-selected antibody responses in order to evaluate
486 whether a combination of responses could improve performance of classification of recent
487 infection. Classifier performance was determined by the cross-validated AUC. Cross-
488 validation was performed for each classifier using repeated random sub-sampling by
489 iteratively and randomly splitting the data set into a training set (2/3) and a test set (1/3)⁶³.
490 For each split the model was fitted to the training set and the predictive accuracy assessed
491 using the test set. The results from 500 iterations were averaged to obtain a cross-validated

492 estimate of the classifier performance and the 0.025 and 0.975 quantiles of the AUC across
493 iterations were extracted to obtain a 95% confidence interval of the cross-validated AUC.

494

495 *Modelling antibody kinetics*

496 A previously validated mathematical model was used to estimate the antigen-specific
497 antibody kinetics. The model captures the boosting and bi-phasic decay in antibody levels
498 following infection and quantifies their inter-individual variation, while simultaneously
499 accounting for differences in prior malaria exposure^{23,24}. Briefly the model assumes that the
500 infection causes antibody levels to rise τ_0 days before the individual presents to the hospital
501 (where τ_0 is a parameter estimated for each individual) and that $A(t)$ is the antibody level at
502 time $t > \tau_0$ and is given by the following equation (1):

503

$$504 \quad A(t) = A_{bg} + A_0 e^{-r_l(t-\tau_0)} + \beta \left((1 - \rho) \frac{e^{-r_s(t-\tau_0)} - e^{-r_a(t-\tau_0)}}{r_a - r_s} + \rho \frac{e^{-r_l(t-\tau_0)} - e^{-r_a(t-\tau_0)}}{r_a - r_l} \right) \quad (1)$$

505

506 where r_a is the rate of decay of IgG molecules; r_s and r_l are the rates of decay of short- and
507 long-lived antibody secreting cells (ASCs), respectively; β is the boost in ASCs following
508 infection at time τ_0 ; and ρ is the proportion of ASCs that are long-lived. A_0 is the pre-
509 existing levels of antibodies. For primary infected individuals, $A_0 = 0$. A_{bg} is the background
510 level of antibody reactivity. The models were fitted separately for each antibody response in a
511 Bayesian framework, and mixed-effects methods were used to capture the natural variation in
512 antibody kinetics between individuals while estimating the average value and variance of the
513 parameters across the entire cohort. Additionally, the antibody kinetic model accounts for
514 sample reactivity exceeding the upper limit of detection of the microarray assay. The rate of

515 decay in antibody reactivity was expressed as the relative reduction (%) after 1 year, starting
516 from the peak of the response⁶⁴.

517 **Author contributions**

518 AF, FHAO and VY planned and designed the study. VY organised the enrolment and follow-
519 up of study participants and processed the samples together with KS, MA, and CS. GK, JT
520 and FHAO, designed and developed the protein microarray with assistance from LM, DK,
521 RY, EC and PK. JT, RK, and TC performed the microarray experiments. KM and NK
522 developed the data acquisition pipeline. VY and MTW performed the data analysis, and
523 MTW developed and fitted the antibody kinetic models. VY wrote the first draft of the
524 manuscript. All authors contributed to critically revising the manuscript and have approved
525 the final version.

526

527 **Acknowledgements**

528 We are grateful to all subjects for their participation in the study. We thank Ingrid Andrén,
529 Irene Nordling and fellow nurses at the Karolinska University Hospital, Department of
530 Infectious Diseases outpatient ward for assistance with coordinating follow-up visits and
531 sampling the study participants. We are grateful to Christine Stenström and colleagues at the
532 Karolinska University Hospital, Department of Microbiology, as well as the attending
533 physicians at the Department of Infectious Diseases, for notifying us regarding the admission
534 of patients diagnosed with *P. falciparum* malaria.

535

536 **Funding**

537 This work was supported by the Swedish Research Council [grant no 2015-02977 and 2018-
538 02688 to AF] and by the Stockholm County Council [ALF project grant no. 20130207 and
539 20150135 to AF]. FHAO is supported by a Sofja Kovalevskaja Award from the Alexander
540 von Humboldt Foundation (3.2 - 1184811 - KEN -SKP) and an EDCTP Senior Fellowship

541 supported by the European Union (TMA 2015 SF1001). The funders had no role in study
542 design, data collection and analysis, decision to publish, or preparation of the manuscript.

543

544 **Availability of data and materials**

545 The datasets used and analysed during the current study are available from the corresponding
546 author on reasonable request.

547

548 **Conflict of interest statement**

549 We declare that there are no known conflicts of interest, financial or other.

550

551 **References**

- 552 1. Rabinovich, R. N. *et al.* malERA: An updated research agenda for malaria elimination
553 and eradication. *PLoS Medicine* **14**, e1002456 (2017).
- 554 2. The malERA Consultative Group on Monitoring Evaluation and Surveillance. A
555 research agenda for malaria eradication: monitoring, evaluation, and surveillance. *PLoS*
556 *Med.* **8**, e1000400 (2011).
- 557 3. World Health Organization. *Global technical strategy for malaria 2016-2030*. World
558 *Health Organisation*. (2015).
- 559 4. Tusting, L. S., Bousema, T., Smith, D. L. & Drakeley, C. Measuring changes in
560 *Plasmodium falciparum* transmission: precision, accuracy and costs of metrics. *Adv.*
561 *Parasitol.* **84**, 151–208 (2014).
- 562 5. Hay Simon, M. E. Measuring malaria endemicity from intense to interrupted
563 transmission. *Lancet Infect. Dis.* **8**, 369–78 (2008).
- 564 6. Stresman, G., Cameron, A. & Drakeley, C. Freedom from Infection: Confirming
565 Interruption of Malaria Transmission. *Trends in Parasitology* **33**, 345–352 (2017).
- 566 7. Cooper, L. *et al.* Pareto rules for malaria super-spreaders and super-spreading. *Nat.*
567 *Commun.* **10**, 1–9 (2019).
- 568 8. Reiner, R. C. *et al.* Time-varying, serotype-specific force of infection of dengue virus.
569 *Proc. Natl. Acad. Sci. U. S. A.* **111**, E2694-2702 (2014).
- 570 9. Bretscher, M. T. *et al.* Measurement of *Plasmodium falciparum* transmission intensity
571 using serological cohort data from Indonesian schoolchildren. *Malar. J.* **12**, 21 (2013).
- 572 10. Martin, D. L. *et al.* Serology for trachoma surveillance after cessation of mass drug
573 administration. *PLoS Negl. Trop. Dis.* **9**, e0003555 (2015).
- 574 11. Golden, A. *et al.* Analysis of age-dependent trends in Ov16 IgG4 seroprevalence to
575 onchocerciasis. *Parasit. Vectors* **9**, 338 (2016).

- 576 12. Kusi, K. A. *et al.* Anti-sporozoite antibodies as alternative markers for malaria
577 transmission intensity estimation. *Malar. J.* **13**, 103 (2014).
- 578 13. Drakeley, C. J. *et al.* Estimating medium- and long-term trends in malaria transmission
579 by using serological markers of malaria exposure. *Proc. Natl. Acad. Sci. U. S. A.* **102**,
580 5108–5113 (2005).
- 581 14. Cook, J. *et al.* Using serological measures to monitor changes in malaria transmission
582 in Vanuatu. *Malar. J.* **9**, 169 (2010).
- 583 15. Ondigo, B. N. *et al.* Estimation of Recent and Long-Term Malaria Transmission in a
584 Population by Antibody Testing to Multiple *Plasmodium falciparum* Antigens. *J.*
585 *Infect. Dis.* **210**, 1123–1132 (2014).
- 586 16. Cavanagh, D. R. *et al.* A longitudinal study of type-specific antibody responses to
587 *Plasmodium falciparum* merozoite surface protein-1 in an area of unstable malaria in
588 Sudan. *J. Immunol.* **161**, 347–59 (1998).
- 589 17. Polley, S. D. *et al.* Human antibodies to recombinant protein constructs of *Plasmodium*
590 *falciparum* Apical Membrane Antigen 1 (AMA1) and their associations with protection
591 from malaria. *Vaccine* **23**, 718–728 (2004).
- 592 18. Yman, V. *et al.* Antibody acquisition models: A new tool for serological surveillance
593 of malaria transmission intensity. *Sci. Rep.* **6**, 19472 (2016).
- 594 19. Wong, J. *et al.* Serological markers for monitoring historical changes in malaria
595 transmission intensity in a highly endemic region of Western Kenya, 1994-2009.
596 *Malar. J.* **13**, 451 (2014).
- 597 20. Borremans, B., Hens, N., Beutels, P., Leirs, H. & Reijnders, J. Estimating Time of
598 Infection Using Prior Serological and Individual Information Can Greatly Improve
599 Incidence Estimation of Human and Wildlife Infections. *PLOS Comput. Biol.* **12**,
600 e1004882 (2016).

- 601 21. Greenhouse, B., Smith, D. L., Rodríguez-Barraquer, I., Mueller, I. & Drakeley, C. J.
602 Taking Sharper Pictures of Malaria with CAMERAs: Combined Antibodies to Measure
603 Exposure Recency Assays. *Am. J. Trop. Med. Hyg.* **99**, 1120–1127 (2018).
- 604 22. Greenhouse, B. *et al.* Priority use cases for antibody-detecting assays of recent malaria
605 exposure as tools to achieve and sustain malaria elimination. *Gates Open Research* **3**,
606 131 (2019).
- 607 23. White, M. T. *et al.* Dynamics of the antibody response to *Plasmodium falciparum*
608 infection in African children. *J. Infect. Dis.* **210**, 1115–1122 (2014).
- 609 24. Yman, V. *et al.* Antibody responses to merozoite antigens after natural *Plasmodium*
610 *falciparum* infection: Kinetics and longevity in absence of re-exposure. *BMC Med.* **17**,
611 (2019).
- 612 25. Kinyanjui, S. M., Conway, D. J., Lanar, D. E. & Marsh, K. IgG antibody responses to
613 *Plasmodium falciparum* merozoite antigens in Kenyan children have a short half-life.
614 *Malar. J.* **6**, (2007).
- 615 26. Helb, D. A. *et al.* Novel serologic biomarkers provide accurate estimates of recent
616 *Plasmodium falciparum* exposure for individuals and communities. *Proc. Natl. Acad.*
617 *Sci.* **112**, E4438–E4447 (2015).
- 618 27. Perraut, R. *et al.* Serological signatures of declining exposure following intensification
619 of integrated malaria control in two rural Senegalese communities. *PLoS One* **12**,
620 e0179146 (2017).
- 621 28. King, C. L. *et al.* Biosignatures of Exposure/Transmission and Immunity. *Am. J. Trop.*
622 *Med. Hyg.* **93**, 16–27 (2015).
- 623 29. Proietti, C. *et al.* Immune Signature Against *Plasmodium falciparum* Antigens Predicts
624 Clinical Immunity in Distinct Malaria Endemic Communities. *Mol. Cell. Proteomics*
625 **19**, 101–113 (2020).

- 626 30. Helb, D. Anti-malarial Antibody Responses & Applications for Assessing Malaria
627 Exposure. (UC Berkeley, 2015).
- 628 31. Kobayashi, T. *et al.* Distinct Antibody Signatures Associated with Different Malaria
629 Transmission Intensities in Zambia and Zimbabwe. *mSphere* **4**, (2019).
- 630 32. van den Hoogen, L. L. *et al.* Selection of Antibody Responses Associated With
631 *Plasmodium falciparum* Infections in the Context of Malaria Elimination. *Front.*
632 *Immunol.* **11**, 928 (2020).
- 633 33. Longley, R. J. *et al.* Development and validation of serological markers for detecting
634 recent *Plasmodium vivax* infection. *Nat. Med.* **2020** **26**, 741–749 (2020).
- 635 34. van den Hoogen, L. L. *et al.* Antibody Responses to Antigenic Targets of Recent
636 Exposure Are Associated With Low-Density Parasitemia in Controlled Human
637 *Plasmodium falciparum* Infections. *Front. Microbiol.* **9**, 3300 (2018).
- 638 35. Wu, L. *et al.* Comparison of diagnostics for the detection of asymptomatic *Plasmodium*
639 *falciparum* infections to inform control and elimination strategies. *Nature* **528**, S86–
640 S93 (2015).
- 641 36. Sheehy, S. H. *et al.* ChAd63-MVA-vectored blood-stage malaria vaccines targeting
642 MSP1 and AMA1: assessment of efficacy against mosquito bite challenge in humans.
643 *Mol. Ther.* **20**, 2355–68 (2012).
- 644 37. Walker, K. M. *et al.* Antibody and T-cell responses associated with experimental
645 human malaria infection or vaccination show limited relationships. *Immunology* **145**,
646 71–81 (2015).
- 647 38. Scholzen, A. & Sauerwein, R. W. Immune activation and induction of memory: lessons
648 learned from controlled human malaria infection with *Plasmodium falciparum*.
649 *Parasitology* **143**, 224–35 (2016).
- 650 39. Homann, M. V. *et al.* Detection of Malaria Parasites After Treatment in Travelers: A

- 651 12-months Longitudinal Study and Statistical Modelling Analysis. *EBioMedicine* **25**,
652 66–72 (2017).
- 653 40. Asghar, M. *et al.* Cellular aging dynamics after acute malaria infection: A 12-month
654 longitudinal study. *Aging Cell* **17**, e12702 (2018).
- 655 41. Sundling, C. *et al.* B cell profiling in malaria reveals expansion and remodeling of
656 CD11c+ B cell subsets. *JCI Insight* **4**, (2019).
- 657 42. Kamuyu, G. *et al.* KILchip v1.0: A Novel Plasmodium falciparum Merozoite Protein
658 Microarray to Facilitate Malaria Vaccine Candidate Prioritization. *Front. Immunol.* **9**,
659 2866 (2018).
- 660 43. World Health Organization. *Disease surveillance for malaria elimination : an*
661 *operational manual*. (World Health Organization, 2012).
- 662 44. Drewe, J. A., Hoinville, L. J., Cook, A. J. C., Floyd, T. & Stärk, K. D. C. Evaluation of
663 animal and public health surveillance systems: a systematic review. *Epidemiol. Infect.*
664 **140**, 575–590 (2012).
- 665 45. Groseclose, S. L. & Buckeridge, D. L. Public Health Surveillance Systems: Recent
666 Advances in Their Use and Evaluation. *Annu. Rev. Public Health* **38**, 57–79 (2017).
- 667 46. Guidelines Working Group. *Updated Guidelines for Evaluating Public Health*
668 *Surveillance Systems*. (2001).
- 669 47. Avdicova, M. *et al.* Data quality monitoring and surveillance system evaluation: A
670 handbook of methods and applications. *ECDC Technical Document* 1–91 (2014).
671 doi:10.2900/35329
- 672 48. McCallum, F. J. *et al.* Differing rates of antibody acquisition to merozoite antigens in
673 malaria: implications for immunity and surveillance. *J. Leukoc. Biol.* **101**, 913–925
674 (2016).
- 675 49. Burel, J. G. *et al.* Dichotomous miR expression and immune responses following

- 676 primary blood-stage malaria. *JCI insight* **2**, (2017).
- 677 50. Stewart, L. *et al.* Rapid assessment of malaria transmission using age-specific sero-
678 conversion rates. *PLoS One* **4**, e6083 (2009).
- 679 51. Weber, G. E. *et al.* Sero-catalytic and Antibody Acquisition Models to Estimate
680 Differing Malaria Transmission Intensities in Western Kenya. *Sci. Rep.* **7**, 16821
681 (2017).
- 682 52. Perraut, R. *et al.* Association of antibodies to Plasmodium falciparum merozoite
683 surface protein-4 with protection against clinical malaria. *Vaccine* **35**, 6720–6726
684 (2017).
- 685 53. Adu, B. *et al.* Antibody levels against GLURP R2, MSP1 block 2 hybrid and AS202.11
686 and the risk of malaria in children living in hyperendemic (Burkina Faso) and hypo-
687 endemic (Ghana) areas. *Malar. J.* **15**, (2016).
- 688 54. Landier, J. *et al.* Operational performance of a plasmodium falciparum ultrasensitive
689 rapid diagnostic test for detection of asymptomatic infections in eastern Myanmar. *J.*
690 *Clin. Microbiol.* **56**, (2018).
- 691 55. Mwesigwa, J. *et al.* Field performance of the malaria highly sensitive rapid diagnostic
692 test in a setting of varying malaria transmission. *Malar. J.* **18**, 288 (2019).
- 693 56. Longley, R. J. *et al.* Naturally acquired antibody responses to more than 300
694 Plasmodium vivax proteins in three geographic regions. *PLoS Negl. Trop. Dis.* **11**,
695 e0005888 (2017).
- 696 57. Sboner, A. *et al.* Robust-Linear-Model Normalization To Reduce Technical Variability
697 in Functional Protein Microarrays research articles. *J. Proteome Res.* **8**, 5451–5464
698 (2009).
- 699 58. Sill, M., Schröder, C., Hoheisel, J. D., Benner, A. & Zucknick, M. Assessment and
700 optimisation of normalisation methods for dual-colour antibody microarrays. *BMC*

- 701 *Bioinformatics* **11**, 556 (2010).
- 702 59. Benjamini, Y. & Hochberg, Y. Controlling the False Discovery Rate: A Practical and
703 Powerful Approach to Multiple Testing. *Journal of the Royal Statistical Society. Series*
704 *B (Methodological)* **57**, 289–300 (1995).
- 705 60. Sun, X. & Xu, W. Fast implementation of DeLong’s algorithm for comparing the areas
706 under correlated receiver operating characteristic curves. *IEEE Signal Process. Lett.*
707 **21**, 1389–1393 (2014).
- 708 61. Nilsson, R., Peña, J. M., Björkegren, J. & Tegnér, J. Consistent Feature Selection for
709 Pattern Recognition in Polynomial Time. *J. Mach. Learn. Res.* **8**, 589–612 (2007).
- 710 62. Kursa, M. B., Rudnicki, W. R., Hastie, T., Tibshirani, R. & Friedman, J. Feature
711 selection with the Boruta Package. *J. Stat. Softw.* **36**, (2010).
- 712 63. Dubitzky, Werner; Granzow, Martin; Berrar, D. *Fundamentals of data mining in*
713 *genomics and proteomics*. (Springer Science & Business Media., 2007).
- 714 64. White, M. *et al.* Antibody kinetics following vaccination with MenAfriVac: an analysis
715 of serological data from randomised trials. *Lancet Infect. Dis.* **19**, 327–336 (2019).
- 716

717 **Figures**

718 **Fig. 1. A heat map of the normalized median fluorescent intensity (MFI) of the antibody**
719 **response to each of the 111 antigens included on the KILChip V1.0 Microarray.** Rows
720 correspond to individual antigens while columns correspond to individual samples. Antigens
721 are sorted from top to bottom by decreasing average normalised MFI across all samples.
722 Samples are sorted first by exposure status, second by sampling time-point and third by
723 average normalised MFI across all antigens.

724

725 **Fig. 2. Differences in average antibody reactivity related to prior exposure**

726 **a)** Box-plot of the overall magnitude of the antibody response to *P. falciparum* over time
727 (averaging signal intensities over all antigens for each individual) in individuals with (grey) or
728 without (magenta) prior malaria exposure. **b)** Box-plot of the breadth of the response over
729 time in individuals with (grey) or without (magenta) prior malaria exposure. The breadth is
730 expressed as the total number of antigens (out of the 111) to which the individual responds. **c)**
731 Volcano plot of the fold-difference in geometric mean antibody reactivity between individuals
732 with or without prior malaria exposure vs. the FDR-adjusted P-value at each of the sampling
733 time-points. Linear mixed-effects regression models fitted to the Log-transformed antibody
734 data were used to estimate the mean fold-difference of the response for each antigen between
735 primary infected and previously exposed participants. P-values were FDR-adjusted for
736 multiple comparisons using the procedure described by Benjamini and Hochberg. A \log_2 (fold
737 difference) of greater than 0 indicates antigens to which the geometric mean response is
738 greater among previously exposed individuals and conversely a \log_2 (fold-difference) of less
739 than 0 indicates antigens to which the geometric mean response is greater among primary
740 infected individuals. Antibody responses that differ significantly between exposure groups are
741 highlighted in red and the 20 antigens for which the difference is greatest are named in the

742 figure. Further details of this comparison are included within the supplementary information
743 (Supplementary Table S2).

744

745 **Fig. 3. Receiver operating characteristic (ROC) curve for classifying individuals as**
746 **infected within 90 days using a threshold antibody level to a single antigen.** Coloured
747 curves correspond to the top 10 antibody responses that were most accurate in detecting
748 recent infection as determined by the classifier area under the ROC curve (AUC).

749

750 **Fig. 4. Feature selection of antibody responses and evaluation of most informative**
751 **antibody combinations. a)** Variable importance plot for classification performance
752 determined using a Boruta feature selection algorithm as described by Kurasa and Rudnicki.
753 The Boruta algorithm was fitted jointly to data for all antibody responses. Antibody responses
754 are ordered from left to right by their importance for classification. The importance measure
755 is defined as the Z-score of the mean decrease accuracy (normalized permutation importance).
756 Blue boxes correspond to the minimal, average, and maximum Z-scores of shadow features.
757 Red boxes indicate variables not contributing significantly to accurate classification. Green
758 boxes indicate the 28 antibody responses contributing significantly to classification that were
759 selected for further evaluation. **b)** Cross-validated receiver operating characteristic (ROC)
760 curves. Random forest classifiers fitted to data on antibody responses to the top 10
761 combinations of 5 out of the 98280 possible combinations of the 28 selected antigens as
762 determined by the classifier area under the ROC curve (AUC). An AUC of 0.5 indicates a
763 classifier that performs no better than random, while an AUC of 1 indicates a perfect
764 classifier. Lines correspond the ten classifiers with the highest cross-validated AUCs.

765

766 **Fig. 5. Individual- and population-level antibody kinetics for the responses to three**
767 **representative antigens (GAMA, EBA175, and PF3D7_1252300) in primary infected and**
768 **previously exposed individuals.** The major antibody kinetic patterns observed were: **a)** a
769 rapid increase and decay following infection with limited differences between individuals
770 with and without prior exposure, **b)** a rapid increase and decay following infection but with
771 substantial differences between individuals with and without prior exposure, and **c)** a limited
772 boosting and decay following infection with or without differences between individuals with
773 or without prior exposure. The top row displays the antibody kinetics for two representative
774 study subjects who were either primary infected (ID: 2015006) or previously exposed (ID:
775 2013008). The dots denote the individual sample antibody reactivity. The solid lines denote
776 the model predicted antibody boost and decay patterns relative to the collection of the first
777 sample at time $t=0$ and the shaded area the 95% credible interval of the prediction. The
778 bottom row displays the geometric mean antibody reactivity over time in each exposure group
779 relative to the collection of the first sample at time $t=0$. The grey and magenta dots denote
780 the average reactivity in previously exposed and primary infected individuals, respectively, at
781 each sampling time point. The red dots denote average reactivity in negative control samples.
782 The solid lines denote the model predicted mean boosting and decay in each exposure group
783 and the shaded area the 95% confidence interval.

784

785 **Fig. 6. Box-plot of individual antigen-specific relative reduction (%) in antibody levels**
786 **after one year of follow-up.** Responses are ordered from left to right by smallest to largest
787 relative reduction in antibody levels. The individual responses identified as top 10 most
788 informative in detecting recent infection based on a threshold antibody level to a single
789 antigen are highlighted in red.

790

791 **Fig. 7. Relationship between classification accuracy and the relative reduction in**
792 **antibody levels.** Mean relative reduction in antibody levels after 1 year of follow-up versus
793 classifier performance as evaluated using the classifier area under the receiver operating
794 characteristic (ROC) curve (AUC). Colours indicate the antibody responses identified as top
795 10 most accurate in detecting recent infection, when using the response to a single antigen.
796 Vertical and horizontal error bars represent the 95% confidence interval (CI) of the estimated
797 mean relative reduction in antibody levels and classifier AUCs, respectively.

798

799 **Supplementary Information**

800 **File S1: Supplementary Information.** Supplementary Table S1 and Supplementary Figs. S1-
801 S5.

802

803 **File S2: Supplementary Table S2.** Results from linear mixed effects models examining the
804 difference in antibody levels between primary infected and previously exposed individuals.
805 All antigens and time-points for which antibody levels were significantly different between
806 the two exposure groups are presented within the table.

807

808 **File S3: Supplementary Table S3.** Results from ROC analysis of identifying recent exposure
809 (within 3 months) based on a threshold antibody level for all individual antigens.

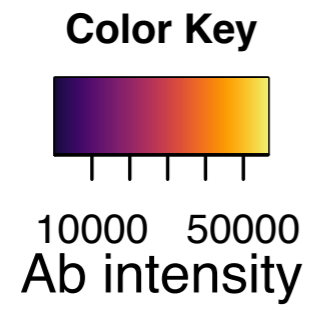
810

811 **File S4: Supplementary Table S4.** The antibody kinetic model estimated population-level
812 parameters and corresponding variance parameters.

813

814 **File S5: Supplementary Table S5.** The antibody kinetic model estimated individual-level
815 parameters.

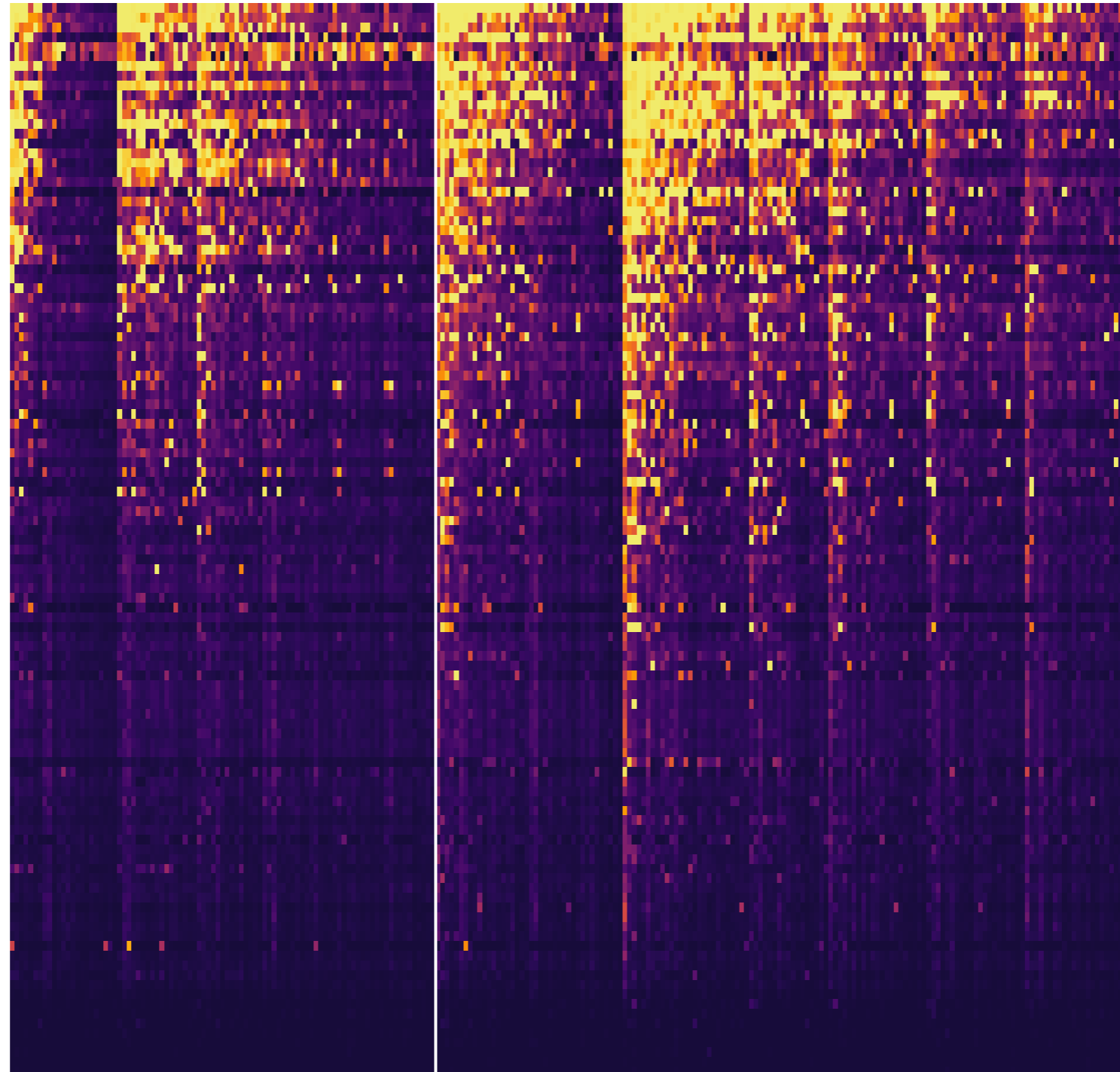
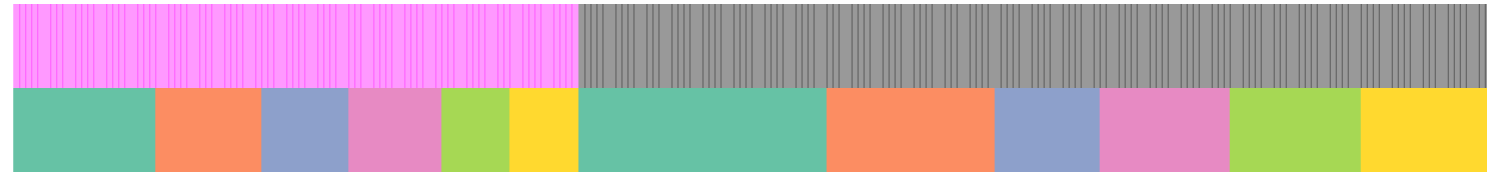
Fig. 1



Exposure Status

Time-point

- Primary infected
- Previously exposed
- Acute
- 10 Days
- 1 Month
- 3 Months
- 6 Months
- 12 Months



- MSP10
- PF3D7_0730800.2
- MSP1Block17
- MSP2CHO
- MSRP2
- MSRP1
- PTEX150
- MSP4
- PFSEA
- MSP2DD2
- AMA1
- MSRP4
- GAMA
- MSP2
- MSP1
- ASP
- PF3D7_1136200
- MSP8
- MSPDBL2N-terminal
- MSP2CH15019DBL2
- MSP11
- MSP3
- MSP5
- SERA5
- Surtin4.23D7A
- PF3D7_0206200
- PF10_0166
- EBA175
- MSP1Block2R033
- MSPDBLC-terminal
- PF13
- PF1160W18
- MSP1Block23D7repeat
- MSP1Block2Wellcometfull
- MSP7
- MSPDBL2C-terminal
- MSP1Block2K1flank
- PF3D7_0629500_SEG2
- RAMA
- PFAD445W
- SERA3
- MSP1Block2Wellcomerepeat
- MSP1Block23D7full
- MSP33D7
- Surtin4.2Conserved
- TLP
- SPATR
- MSP1Block2MAD20repeat
- PF92
- SERA4
- MSP1Block2PaloAltorepeat
- PF3D7_1401600(PHISTB)
- MSP3.5
- MSP6
- MSP9
- RH1
- MSP1Block2MAD20full
- MSP3.6
- PF3D7-1431400
- SERA2
- PF3D7_0525800(IMC1g)
- H101
- MTRAP
- SERA7
- RHOPH3
- PF1400044
- PTRAMP
- P38
- PF3D7_1345100
- MSPDBLN-terminal
- PF3D7_0631400
- PF3D7_1223300
- PF3D7_1460600(ISP3)
- Surtin4.2K1
- RON3
- RON6
- PFAD210c
- PF3D7_1105800
- EBA181
- MSRP5
- PF3D7_1455300
- PF3D7-1137300
- RH2b
- ETRAPM10.2
- SERA9
- CLAG3.2
- PF1160W19
- RH5
- MSRP3
- Surtin4.2K1A
- P12
- PF3D7_0629500_SEG1
- PF3D7_0925900
- P41
- PFAD1130W
- PFAD135W
- PF3D7_1462300
- EBA140
- PF3D7_0606800
- PF3D7_0830500
- MSP3K1
- P34
- PF13_0125
- Surtin4.23D7B
- RIPR
- AARP
- PF3D7_1343700(KELCH)
- PF3D7_1407800(PM4)
- PF3D7_1025300
- PF3D7_1237900
- PF3D7_1252300

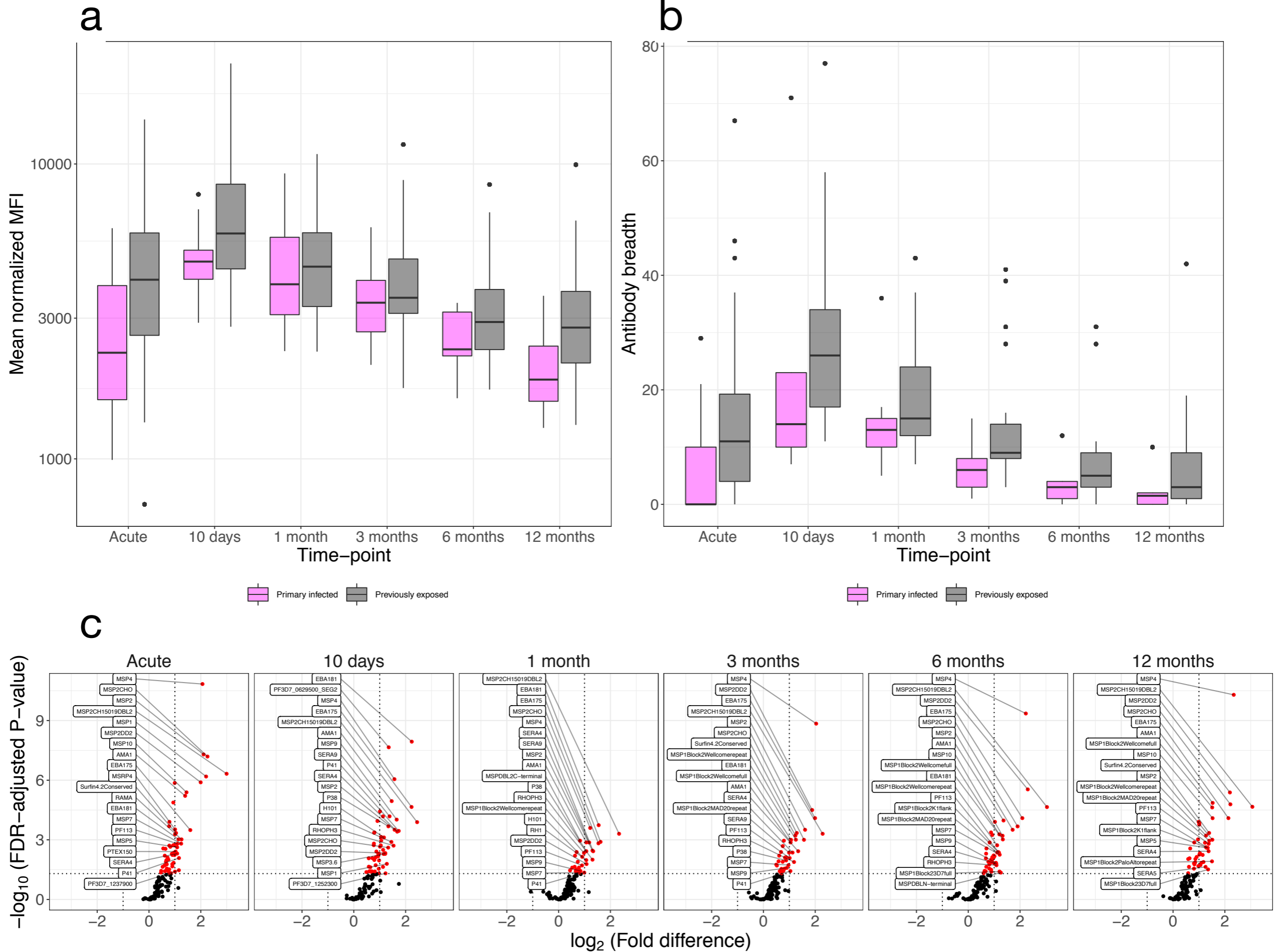
Fig. 2

Fig. 3

ROC curve for classifying recent *P. falciparum* infections:
Threshold antibody level

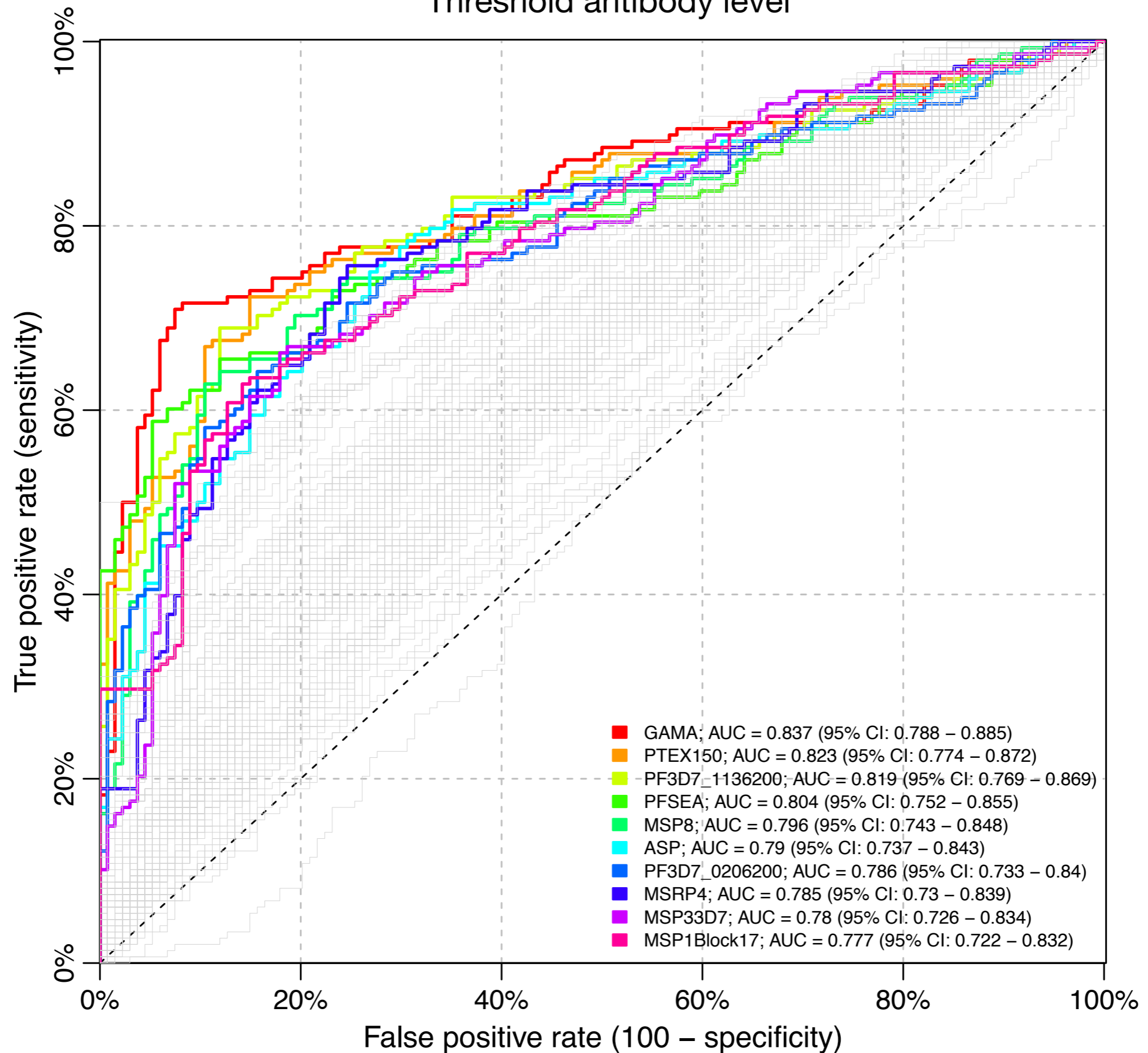


Fig. 5

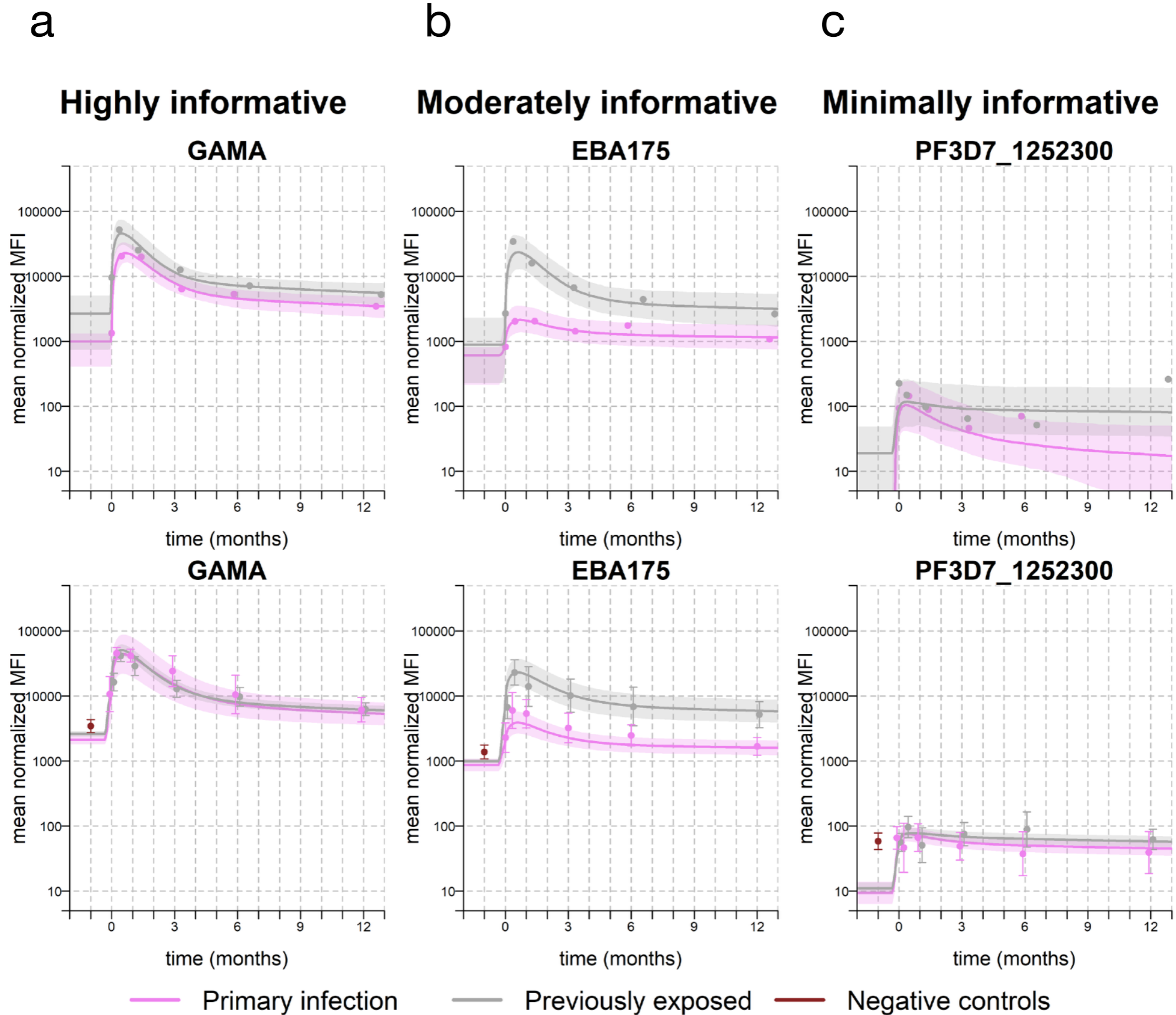


Fig. 6

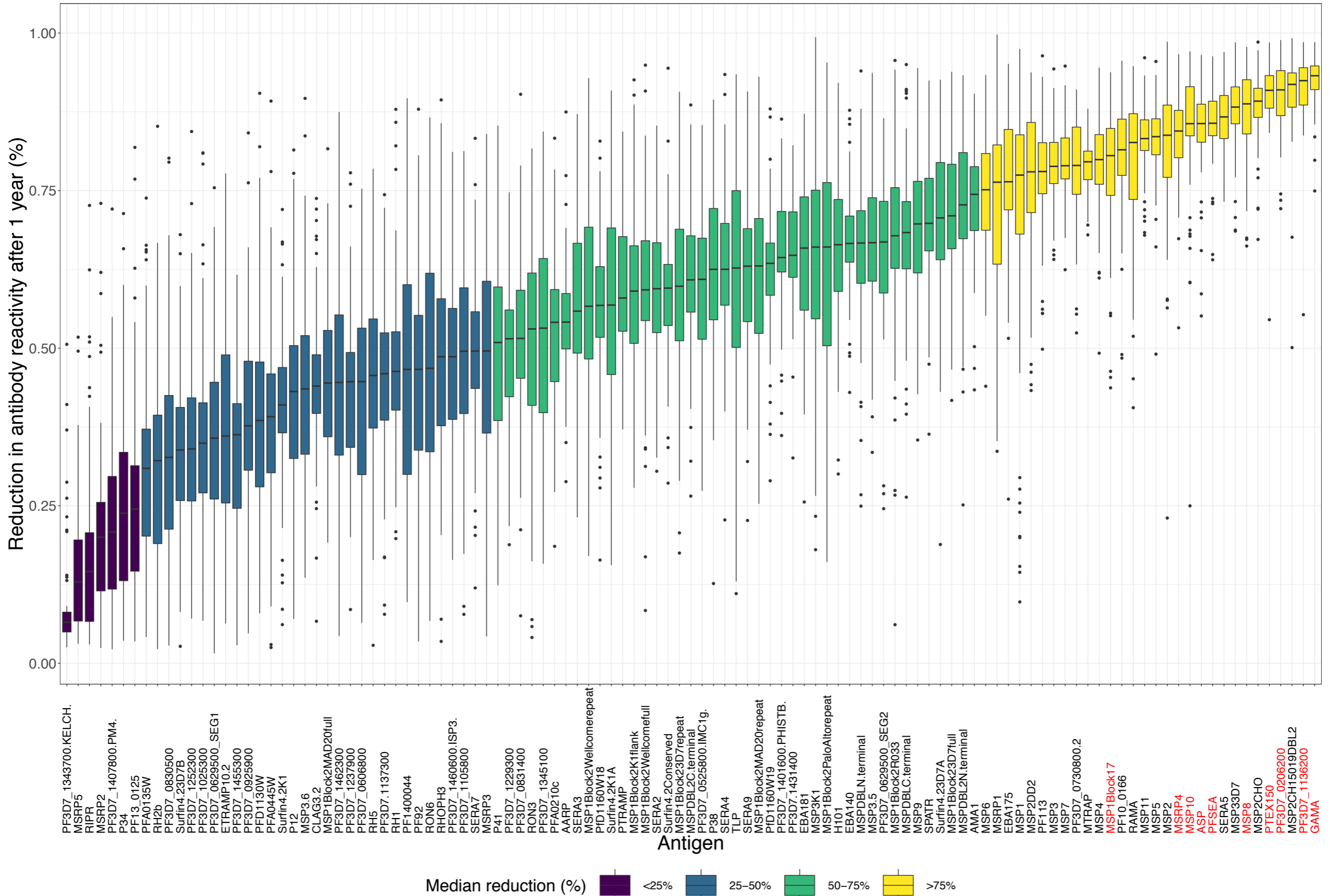


Fig. 7

