

1 **Social and racial inequalities in COVID-19 risk of hospitalisation and death**  
2 **across São Paulo state, Brazil**

3  
4 Sabrina L Li, MSc <sup>1\*#</sup>, Rafael H M Pereira, DPhil <sup>2\*#</sup>, Carlos A Prete Jr, MSc <sup>3\*</sup>,  
5 Alexander E Zarebski, PhD <sup>4</sup>, Lucas Emanuel, PhD <sup>2</sup>, Pedro JH Alves, MSc <sup>2</sup>, Pedro  
6 S Peixoto <sup>5</sup>, PhD, Carlos KV Braga, MSc <sup>2</sup>, Andreza A de Souza Santos, PhD <sup>6</sup>,  
7 William M de Souza, PhD <sup>4,7</sup>, Rogerio J Barbosa, PhD <sup>8</sup>, Lewis F Buss, MD <sup>9</sup>, Alfredo  
8 Mendrone Jr, MD <sup>10</sup>, Cesar de Almeida-Neto, MD <sup>10,11</sup>, Suzete C Ferreira, PhD <sup>10,12</sup>,  
9 Nanci A Salles, BSc <sup>10,12</sup>, Izabel Marcilio, MD <sup>13</sup>, Chieh-Hsi Wu, PhD <sup>14</sup>, Nelson  
10 Gouveia, MD <sup>15</sup>, Vitor H Nascimento, PhD <sup>3</sup>, Ester C Sabino, MD <sup>9</sup>, Nuno R Faria,  
11 PhD <sup>4,9,16</sup>, Jane P Messina, PhD <sup>1,17</sup>

- 12  
13 1. School of Geography and the Environment, University of Oxford, Oxford,  
14 United Kingdom.
- 15 2. Institute for Applied Economic Research, Brasília, Brazil.
- 16 3. Department of Electronic Systems Engineering, University of São Paulo, São  
17 Paulo, Brazil.
- 18 4. Department of Zoology, University of Oxford, Oxford, United Kingdom.
- 19 5. Department of Applied Mathematics, Institute of Mathematics and Statistics,  
20 University of São Paulo, São Paulo, Brazil.
- 21 6. Oxford School of Global and Area Studies, Latin American Centre, University  
22 of Oxford, Oxford, United Kingdom.
- 23 7. Virology Research Center, University of São Paulo, Ribeirão Preto, Brazil.
- 24 8. Center for Metropolitan Studies, Faculty of Philosophy, Languages and  
25 Literature, and Human Sciences, University of São Paulo, São Paulo, Brazil.
- 26 9. Departamento de Molestias Infecciosas e Parasitárias & Instituto de Medicina  
27 Tropical da Faculdade de Medicina da Universidade de São Paulo, São  
28 Paulo, Brazil.
- 29 10. Fundação Pró-Sangue Hemocentro de São Paulo
- 30 11. Disciplina de Ciências Médicas, Faculdade de Medicina da Universidade de  
31 São Paulo, São Paulo, Brazil.

- 32 12. Laboratory of Medical Investigation in Pathogenesis and Directed Therapy in  
33 Onco – Immuno – Hematology (LIM-31) HCFMUSP, University of São Paulo  
34 Medical School, São Paulo, Brazil.
- 35 13. Epidemiologic Surveillance Center, Hospital das Clinicas – University of São  
36 Paulo Medical School, São Paulo, Brazil.
- 37 14. Mathematical Sciences, University of Southampton, Southampton, United  
38 Kingdom.
- 39 15. Department of Preventive Medicine, University of São Paulo Medical School
- 40 16. MRC Centre for Global Infectious Disease Analysis, J-IDEA, Imperial College  
41 London, London, UK.
- 42 17. Oxford School of Global and Area Studies, University of Oxford, Oxford, United  
43 Kingdom.

44

45 \*These authors contributed equally.

46

47 #Corresponding authors:

- 48 1. Sabrina L. Li, School of Geography and the Environment, University of  
49 Oxford, South Parks Rd, Oxford, OX1 3QY, United Kingdom. E-mail:  
50 [sabrina.li@ouce.ox.ac.uk](mailto:sabrina.li@ouce.ox.ac.uk)
- 51
- 52 2. Rafael H.M. Pereira, Institute for Applied Economic Research (Ipea), SBS -  
53 Quadra 1 - Bloco J - Ed. BNDES - CEP: 70076-900 - Brasília - DF – Brasil. E-  
54 mail: [rafael.pereira@ipea.gov.br](mailto:rafael.pereira@ipea.gov.br)

55

56

57

58 **Summary**

59

60 **Background:** Little evidence exists on the differential health effects of COVID-19 on  
61 disadvantaged population groups. Here we characterise the differential risk of  
62 hospitalisation and death in São Paulo state, Brazil and show how vulnerability to  
63 COVID-19 is shaped by socioeconomic inequalities.

64 **Methods:** We conducted a cross-sectional study using hospitalised severe acute  
65 respiratory infections (SARI) notified from March to August 2020, in the *Sistema de*  
66 *Monitoramento Inteligente de São Paulo* (SIMI-SP) database. We examined the risk  
67 of hospitalisation and death by race and socioeconomic status using multiple datasets  
68 for individual-level and spatio-temporal analyses. We explained these inequalities  
69 according to differences in daily mobility from mobile phone data, teleworking  
70 behaviour, and comorbidities.

71 **Findings:** Throughout the study period, patients living in the 40% poorest areas were  
72 more likely to die when compared to patients living in the 5% wealthiest areas (OR:  
73 1.60, 95% CI: 1.48 – 1.74) and were more likely to be hospitalised between April and  
74 July, 2020 (OR: 1.08, 95% CI: 1.04 – 1.12). Black and *Pardo* individuals were more  
75 likely to be hospitalised when compared to White individuals (OR: 1.37, 95% CI: 1.32  
76 – 1.41; OR: 1.23, 95% CI: 1.21 – 1.25, respectively), and were more likely to die (OR:  
77 1.14, 95% CI: 1.07 – 1.21; 1.09, 95% CI: 1.05 – 1.13, respectively).

78 **Interpretation:** Low-income and Black and *Pardo* communities are more likely to die  
79 with COVID-19. This is associated with differential access to healthcare, adherence  
80 to social distancing, and the higher prevalence of comorbidities.

81 **Funding:**

82 This project was supported by a Medical Research Council-São Paulo Research  
83 Foundation (FAPESP) CADDE partnership award (MR/S0195/1 and FAPESP  
84 18/14389-0) (<http://caddecentre.org/>). This work received funding from the U.K.  
85 Medical Research Council under a concordat with the U.K. Department for  
86 International Development.

87

## 88 **Introduction**

89 The COVID-19 pandemic has amplified the effects of social inequalities on exposure  
90 and death in low socioeconomic groups <sup>1</sup>, particularly in Brazil, where it has caused  
91 significant mortality <sup>2</sup>. Few studies have addressed the uneven impact of COVID-19  
92 by socioeconomic status and race <sup>3-5</sup>, especially in low and middle-income countries,  
93 in part because national surveillance systems seldom collect or report this information  
94 <sup>6</sup>. In Brazil, higher risk of COVID-19 death has been found for Black and *Pardo* (mixed  
95 ethnicity) Brazilians <sup>7</sup>. Nonetheless, there is still little information on how the differential  
96 health outcomes of COVID-19 are shaped by broader social inequalities that  
97 determine the capacity to adhere to social distancing and non-pharmaceutical  
98 interventions (NPIs).

99 It is paramount to understand the potential social drivers of COVID-19 morbidity and  
100 mortality, particularly in countries with high inequality such as Brazil <sup>8</sup>. The first COVID-  
101 19 cases in Brazil were detected in São Paulo <sup>9</sup>, the most populous state and home  
102 to diverse racial groups. In the Brazilian context of politically polarised public health  
103 responses <sup>10</sup>, São Paulo has been severely affected by COVID-19 <sup>11</sup> and access to  
104 testing has been limited for low-income populations <sup>12</sup>. By combining multiple high-  
105 resolution data sources, we conducted a multi-scale analysis to investigate the risk of  
106 hospitalisation and death from severe acute respiratory infections (SARI),  
107 predominantly caused by COVID-19 <sup>12</sup>, by race and socioeconomic status in the state  
108 of São Paulo. We examined potential drivers of these inequalities by evaluating local  
109 levels of population adherence to social distancing, access to teleworking, and  
110 prevalence of comorbidities

111 **Methods**

112 **Data Sources**

113 **Severe acute respiratory infections (SARI) and patient information**

114 Patient-level information on demographic characteristics, home address,  
115 hospitalisation, and health outcomes were collected from the São Paulo State Health  
116 Secretariat SARI hospitalisations database (SIMI-SP) <sup>13</sup>. SARI can be caused by  
117 SARS-CoV-2 and is defined by the Brazilian Ministry of Health as flu-like syndrome  
118 plus one of the following: dyspnoea, persistent chest pain, or hypoxia. All SARI cases  
119 and deaths are notified in the SIMI-SP database, regardless of hospitalisation.

120 We included all SARI related hospitalisations and deaths notified in São Paulo state  
121 between March 15 and August 29, 2020. Given that recent data is incomplete due to  
122 reporting delays <sup>14</sup> and to avoid biases, we limited our analysis to patients with  
123 symptoms onset between these dates (epidemiological weeks 10 – 35) (figure 1B).  
124 We also included SARI cases with unknown aetiology, as those are likely related to  
125 COVID-19 but not lab-confirmed due to low rates of COVID-19 testing in Brazil <sup>15</sup> and  
126 socioeconomic bias in testing <sup>12</sup>.

127 Zip code information was only available for cases reported in São Paulo state. Data  
128 was geocoded using the patient’s self-reported home address or postal code with  
129 Galileo ([www.img.com.br](http://www.img.com.br)) and Google API. Information on the health facility where  
130 each case was notified was linked to the National Registry of Health Facilities (CNES),  
131 which includes information on the mode of health care provision (public and private).

132 The race of patients was partially self-declared and partially identified by a health  
133 professional. Race was categorised as either “White”, “Black”, “Asian” (East or  
134 Southeast Asian), “*Pardo*” (mixed ethnic ancestries with diverse skin colours)<sup>16</sup> or  
135 Indigenous. Race information was missing for 53 480 (23.9%) of retrieved SARI  
136 cases, and were imputed using the racial distribution of the census tract of residence  
137 (see Supplementary Appendix A for details). About 0.1% of the population in São

138 Paulo self-identified as indigenous <sup>17</sup> and since only 166 indigenous patients (0.07%)  
139 were recorded, they were not considered in our analysis.

#### 140 **Socioeconomic data**

141 We obtained data on municipality-level socioeconomic factors from the latest  
142 population census (2010) compiled by the Brazilian Institute of Geography and  
143 Statistics ([IBGE](#)). We selected household income per capita, population density, and  
144 income inequality (Gini Index). We also determined the proportion of residents with a  
145 primary education or lower, employment-to-population ratio, and the proportion of the  
146 working population without a formal labour market contract or social security. The road  
147 network distance from the centroid of each census tract to the nearest healthcare  
148 facility was computed considering all facilities that hospitalised SARI patients via the  
149 public healthcare system (SUS). Information on employment status and comorbidities  
150 during the epidemic was retrieved from the National Household Sample Survey  
151 (PNAD COVID-19), a national telephone survey conducted by IBGE with over 1 888  
152 560 interviews between May and September 2020. Details are described in  
153 Supplementary Appendix A.

#### 154 **Daily mobility and non-pharmaceutical interventions**

155 To assess local-level adherence to social distancing, we used daily mobile phone data  
156 provided by In-LoCo (<https://www.inloco.com.br/covid-19>)<sup>18</sup> for the *Região*  
157 *Metropolitana de São Paulo* (greater metropolitan area of São Paulo: RMSP). This  
158 data was aggregated using a hexagonal grid based on the global H3 index at  
159 resolution 8. Each cell has an edge of approximately 460 meters and an area of 0.74  
160 km<sup>2</sup> (<https://h3geo.org/docs/core-library/restable>). For each H3 cell, the social  
161 isolation index was measured as the number of people who did not leave their cell of  
162 residence during the day, divided by the number of residents in that cell. Each mobile  
163 phone was assigned to an H3 cell based on the owner's location of residence during  
164 the evening and their previous travel history. The racial composition and income level  
165 of each cell were determined using dasymetric interpolation (Supplementary Appendix  
166 A).

167 We also used municipality and state-level data on NPIs from a continuous survey  
168 conducted between May 13 and July 31, 2020<sup>19</sup>. The survey had 13 questions related  
169 to the implementation and easing of social distancing measures, and responses were  
170 obtained from 612 mayors in São Paulo (94.8% of the total).

## 171 **Data analysis**

### 172 **Probability of hospitalisation and death**

173 We conducted an individual-level analysis to estimate the probability of reporting a  
174 SARI hospitalisation given a patient's race and average income level in their census  
175 tract of residence. Census tracts were grouped by quantiles of income per capita into  
176 six categories as presented in the results. Similarly, we determined the probability of  
177 death from SARI given a patient's race, income, and administrative type of the health  
178 facility where the patient was hospitalised (public or private). Both probabilities were  
179 standardised by age and sex to account for demographic differences between groups.  
180 They were calculated for every month between March and August 2020. Probabilities  
181 for each age-sex group were estimated empirically using relative frequencies. Odds  
182 ratios using White patients and the highest income level as reference groups were  
183 computed. Confidence intervals were calculated using bootstrapping. Details are in  
184 Supplementary Appendix A.

### 185 **Seroprevalence by socioeconomic status**

186 To assess the broader risk of SARS-CoV-2 infection beyond hospitalisation, we  
187 analysed seroprevalence data collected as part of the national Covid-IgG study<sup>20</sup> from  
188 blood donors aged 16 – 69 living in São Paulo city<sup>20</sup> (Supplementary Appendix A).  
189 We calculated the proportion of individuals by education and race category with  
190 detectable anti-SARS-CoV-2 antibodies between February and October 2020.

### 191 **Socioeconomic drivers and hospitalisation risk**

192 An ecological spatio-temporal regression analysis was conducted at the municipality  
193 level for São Paulo state (n = 645 municipalities) to assess the monthly risk of

194 hospitalisation and its association with socioeconomic factors between March 1 and  
195 August 29, 2020. To further understand the association between socioeconomic  
196 conditions and COVID-19 risk, we conducted the same analysis at the census tract  
197 level (n= 30 815) for the RMSP, where the majority of cases were concentrated. The  
198 relative risk of hospitalisation was estimated using a hierarchical Bayesian model  
199 composed of a generalised log-linear model with spatially structured and unstructured  
200 random effects to account for spatial autocorrelation and time-varying random effect.  
201 The spatial structure is characterised by population movement between municipalities  
202 from March 1 to August 15, 2020 defined by In-LoCo mobile geo-location data  
203 summarised elsewhere <sup>18</sup>. A detailed description of the model and interpretation,  
204 covariates, and diagnostics can be found in Supplementary Appendix A.

### 205 **Social adherence response to NPIs**

206 We used an event study design <sup>21</sup> to examine how different socioeconomic groups  
207 changed their daily mobility levels in response to the introduction and relaxation of  
208 NPIs in the RMSP. We compared changes in mobility patterns of the population living  
209 in H3 cells with predominantly White versus predominantly Black or *Pardo* residents,  
210 as well as of the population living in areas of the wealthiest and poorest income  
211 quintiles. The daily social distancing index from hexagons were regressed on a set of  
212 relative time dummies that indicated the number of days before and after the first NPI  
213 introduction in São Paulo state. Hexagon-fixed effects controlled for unobserved time-  
214 invariant determinants of social distancing, while day-fixed effects controlled for  
215 temporal shocks common to all hexagons. We further included an additional time-  
216 varying control variable, representing the number of days relative to the first confirmed  
217 SARI case in each hexagon, and a dummy variable indicating the period of NPI  
218 relaxation in each municipality. Sensitivity analyses were performed and discussed in  
219 Supplementary Appendix A.

220 We employed a multinomial logistic regression to estimate the probability that  
221 employed individuals would be working face-to-face, teleworking, or taking paid or  
222 unpaid leave. Differences in the work status of individuals by race, education, and



223 occupation were calculated while controlling for age and sex. 35 groups of  
224 employment occupations listed in the PNAD COVID-19 survey were aggregated to  
225 ten SCO-08 1-digit occupational groups defined by the International Labour  
226 Organisation. We further disaggregated health professionals and health technicians  
227 (Supplementary Appendix A – Table A2).

## 228 **Comorbidities**

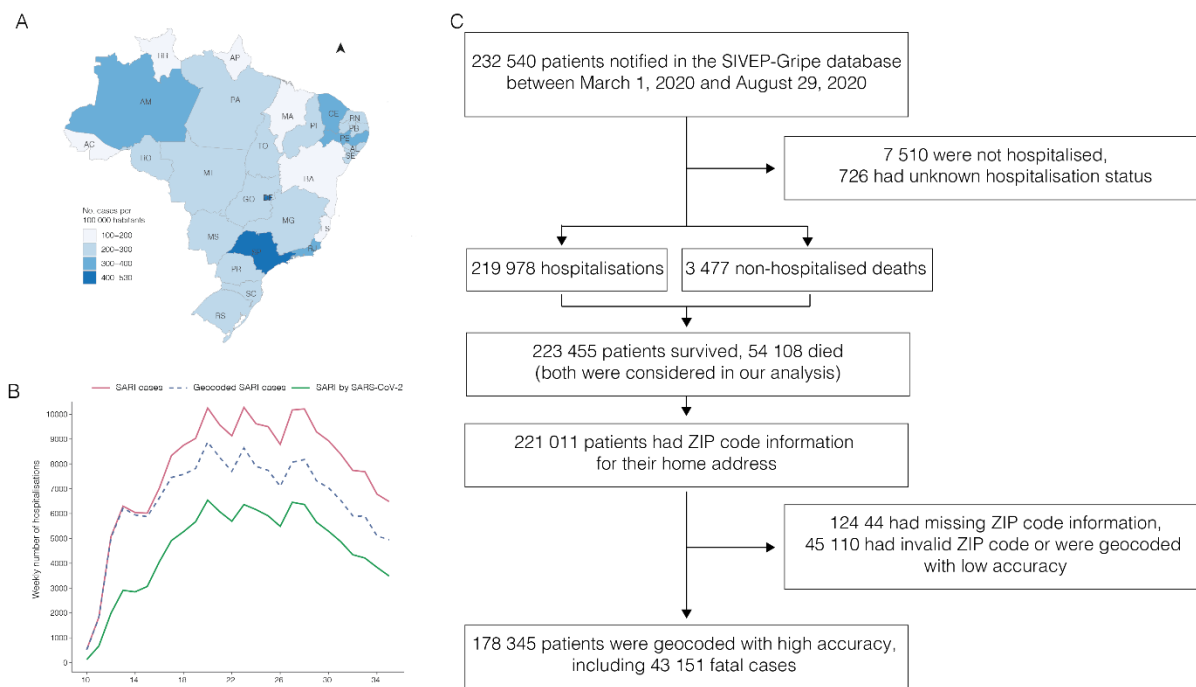
229 PNAD COVID-19 data was used to conduct a binomial logistic regression to estimate  
230 the odds ratio of having at least one comorbidity, by race and education attainment  
231 (pre-primary, primary, secondary, and tertiary), while controlling for age and sex for  
232 São Paulo state. The comorbidities considered were chronic obstructive pulmonary  
233 disease (COPD), diabetes, hypertension, or cardiovascular disease such as  
234 myocardial infarction, angina or heart failure. Confidence intervals for the odds ratios  
235 were calculated taking into account PNAD's complex sample design.

236

## 237 **Results**

238 Between March 1 and August 29, 2020, São Paulo state had the highest number of  
239 SARI hospitalisations per 100 000 habitants compared to all states in Brazil (figure  
240 1A). A time series illustrating the number of SARI hospitalisations is presented in  
241 figure 1B. During this time, 232 540 patients were notified in the SIMI-SP database  
242 (figure 1C), from which 230 794 (99.2%) had a confirmed COVID-19 diagnosis or were  
243 diagnosed with SARI of unknown or missing aetiology. From these, 223 455 were  
244 hospitalised (98.4%) or died without hospitalisation (1.6%). From the non-hospitalised  
245 cases, we only selected deaths; 54 108 patients died, of which 52.5% were White,  
246 20.2% were *Pardo*, 6.13% were Black, 1.96% were Asian, 0.052% were Indigenous  
247 and 19.6% did not have race information. We geocoded 178 345 (79.8%) of all SARI  
248 cases considered in our analyses with high accuracy at either street address, route,  
249 or neighbourhood level without compromising personal privacy.

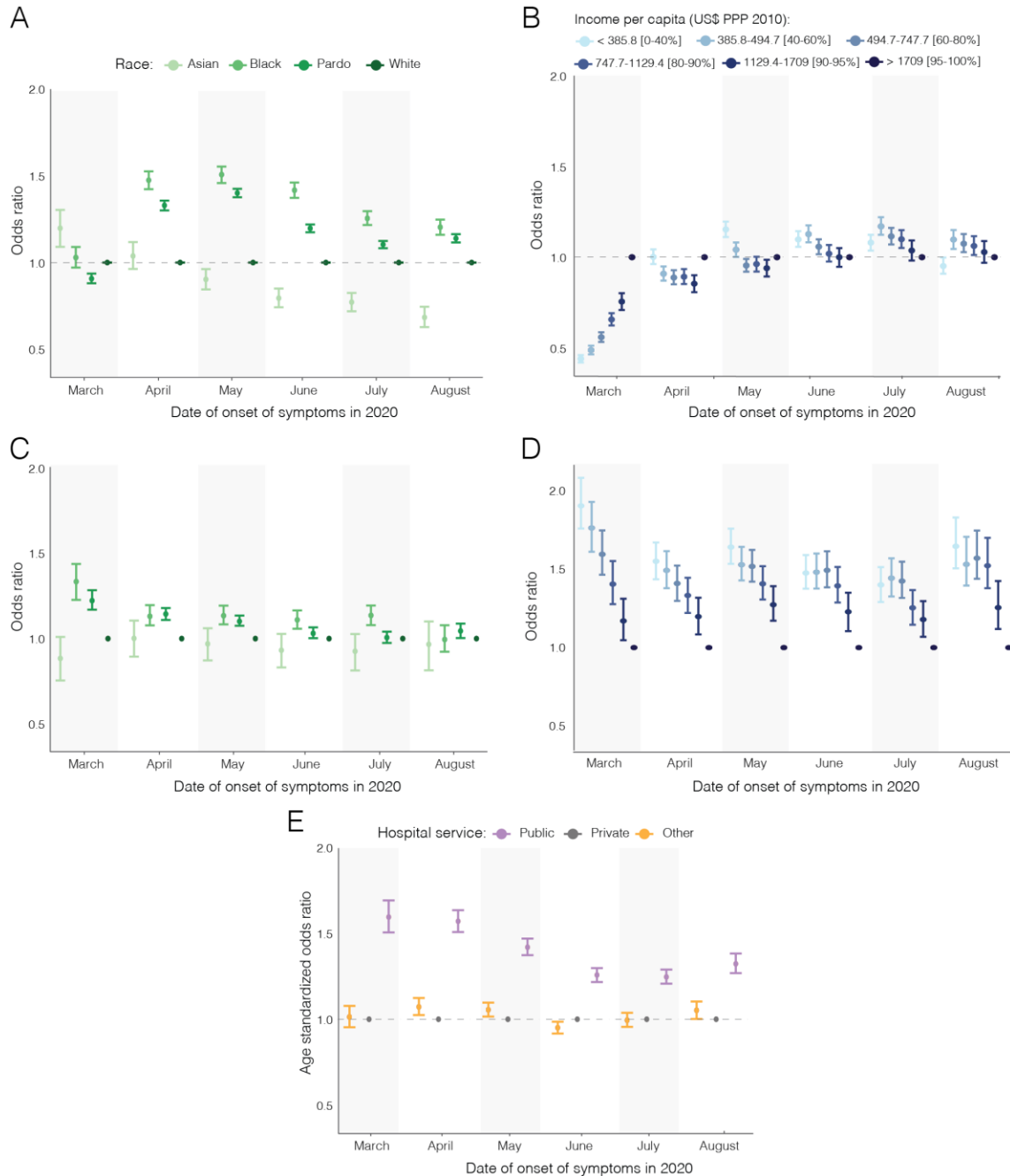
250 During the first month of the COVID-19 epidemic (March) in Brazil, hospitalised  
 251 patients were more likely to be White or Asian and come from census tracts with higher  
 252 income per capita (figure 2A and 2B). During this period, people living in low-income  
 253 areas, compared to high-income areas, were less likely (OR: 0.44, 95% CI: 0.42 –  
 254 0.46) to be hospitalised with SARI. This coincides with the early establishment of  
 255 COVID-19 and its first cases in higher-income travellers returning from overseas<sup>9,12</sup>.



256  
 257 **Figure 1.** Number of SARI hospitalisations per 100 000 habitants by state in Brazil  
 258 between March 1 and August 29, 2020 (A). Number of SARI hospitalisations for the  
 259 state of São Paulo and the greater metropolitan area of São Paulo (RMSP) by week  
 260 of symptom onset (B). Flowchart of SIMI-SP data processing (Source:  
 261 <https://covid.saude.gov.br>) (C).  
 262

263 As the epidemic progressed from April onwards, patients were also more likely to be  
 264 from low-income census tracts (April to July, OR: 1.08, 95% CI: 1.04 – 1.12), except  
 265 for August, when patients were less likely to be from low-income census tracts (OR:  
 266 0.95, 95% CI: 0.91 – 1.00). Similarly, Black Brazilians and *Pardos* became more likely  
 267 to be hospitalised with SARI than Whites (OR: 1.37, 95% CI: 1.32 – 1.41; OR: 1.23,  
 268 95% CI: 1.21 – 1.25, respectively), while Asians became the least likely to be  
 269 hospitalised (OR: 0.90, 95% CI: 0.83 – 0.96). These results were further confirmed by

270 our seroprevalence findings, which showed that anti-SARS-CoV-2 antibodies were  
 271 highest in Black blood donors and those with low educational attainment across all  
 272 age groups (Supplementary Appendix B – figure S1).



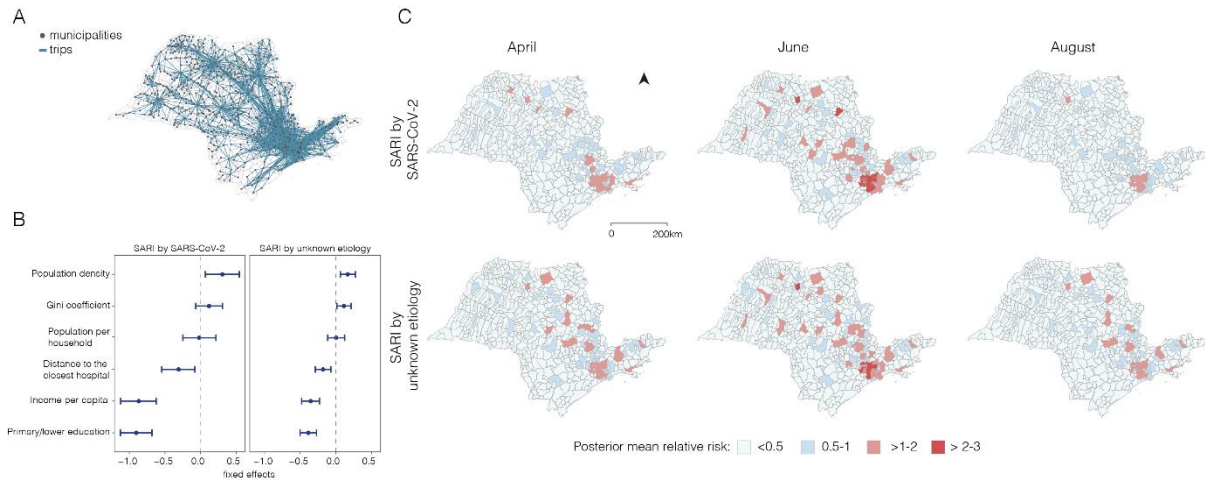
273

274 **Figure 2.** Age-standardised odds ratio (OR) for SARI hospitalisation by race (A) and  
 275 by income (B); Age-standardised OR of death among SARI cases by race (C) and  
 276 income (D); and Age-standardised OR of death among SARI cases by hospital type  
 277 for São Paulo state (E). *PPP: Purchasing power parity.*

278 Once hospitalised, Black and *Pardo* patients were more likely to die from SARI than  
279 White patients (OR: 1.14, 95% CI: 1.07 – 1.21; 1.09, 95% CI: 1.05 – 1.13,  
280 respectively) (figure 2C). This difference was more pronounced in March and was  
281 reduced over time. We found that patients living in the poorest census tracts were  
282 more likely to die from SARI compared to patients from the wealthiest tracts (OR: 1.60,  
283 95% CI: 1.48 – 1.74) (figure 2D). Likewise, patients treated in public hospitals were  
284 more likely to die than patients treated in private hospitals throughout the epidemic  
285 (OR: 1.40, 95% CI: 1.34-1.46) (figure 2E). Racial differences in the probability of death  
286 decreased when considering only patients hospitalised at public health facilities but  
287 persisted among patients in private facilities (Supplementary Appendix B – figure S2).

288 To understand the geographical variation in SARI hospitalisation, we predicted and  
289 mapped the relative risk of SARI hospitalisation for São Paulo state by month via a  
290 model with a spatial structure defined by human movement fluxes derived from  
291 anonymised mobile phone data (figure 3A) and covariates related to socioeconomic  
292 status (figure 3B). This is shown in figure 3C. We found a lower risk of hospitalisation  
293 in municipalities with high income per capita (fixed effect = -0.93, 95% CI: -1.17 – -  
294 0.69), high proportion of adult residents with a primary education or lower (-0.80, 95%  
295 CI: -1.0 – -0.60), and high proportion of informal workers (-0.22, 95% CI: -0.41 – -  
296 0.03). Municipalities with fewer nearby public health facilities were also found to have  
297 lower risk of hospitalisation (-0.24, 95% CI: -0.45 – -0.03). We also found a higher risk  
298 of SARI hospitalisation in municipalities with higher population density (0.24, 95%  
299 credible interval: 0.04 – 0.44).

300



301

302 **Figure 3:** Relative risk of SARI hospitalisation in the state of São Paulo at the  
 303 municipality level (A). Human movement between municipalities based on In-LoCo  
 304 mobile phone data retrieved from March to August 2020 (B). Fixed effects and 95%  
 305 credible intervals for socioeconomic covariates (C).

306

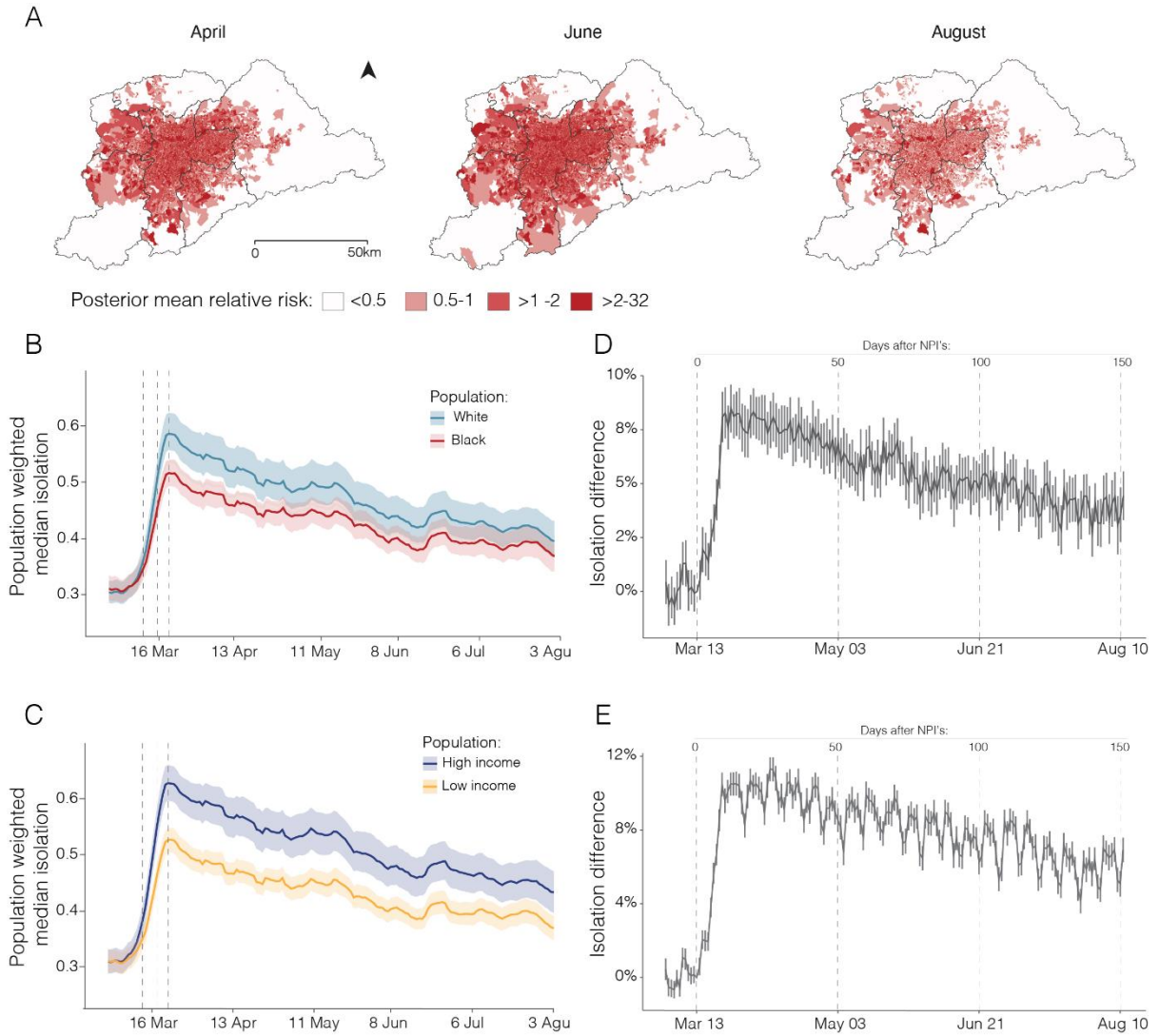
307 We found that over time, the risk of SARI hospitalisation increased particularly in  
 308 municipalities near and within the RMSP, where 70% of the SARI cases reported for  
 309 the state are concentrated (figure 4A). By mapping risk at the census tract level for  
 310 the RMSP, we detected increasing risk starting from São Paulo city (central region).  
 311 By June, almost all of the census tracts in and near the city centre were found to have  
 312 high relative risk, but this risk decreased by August.

313

314 Differential risk to SARI in the RMSP was also associated with daily mobility levels by  
 315 disadvantaged groups. Before the implementation of NPIs on March 13, mobility levels  
 316 were similar across all socioeconomic groups (figures 4B and 4C). However, 14 days  
 317 after the introduction of NPIs, isolation levels were 8.2% (95% CI: 7.2% – 9.2%) higher  
 318 in predominantly White areas compared to predominantly Black areas. Similarly, 27  
 319 days after the introduction of state-level NPIs, isolation levels were 11.2% (95% CI:  
 320 10.6% – 11.9%) higher in the wealthiest than in the poorest areas. Overall, we  
 321 detected a decreasing trend in isolation levels over time, and the magnitude of the  
 322 differences in social isolation levels between areas with predominantly White and

323 Black populations decreased to only 4.4% (95% CI: 3.3% – 5.5%) 151 days after the  
 324 introduction of the NPIs (figure 4D).

325



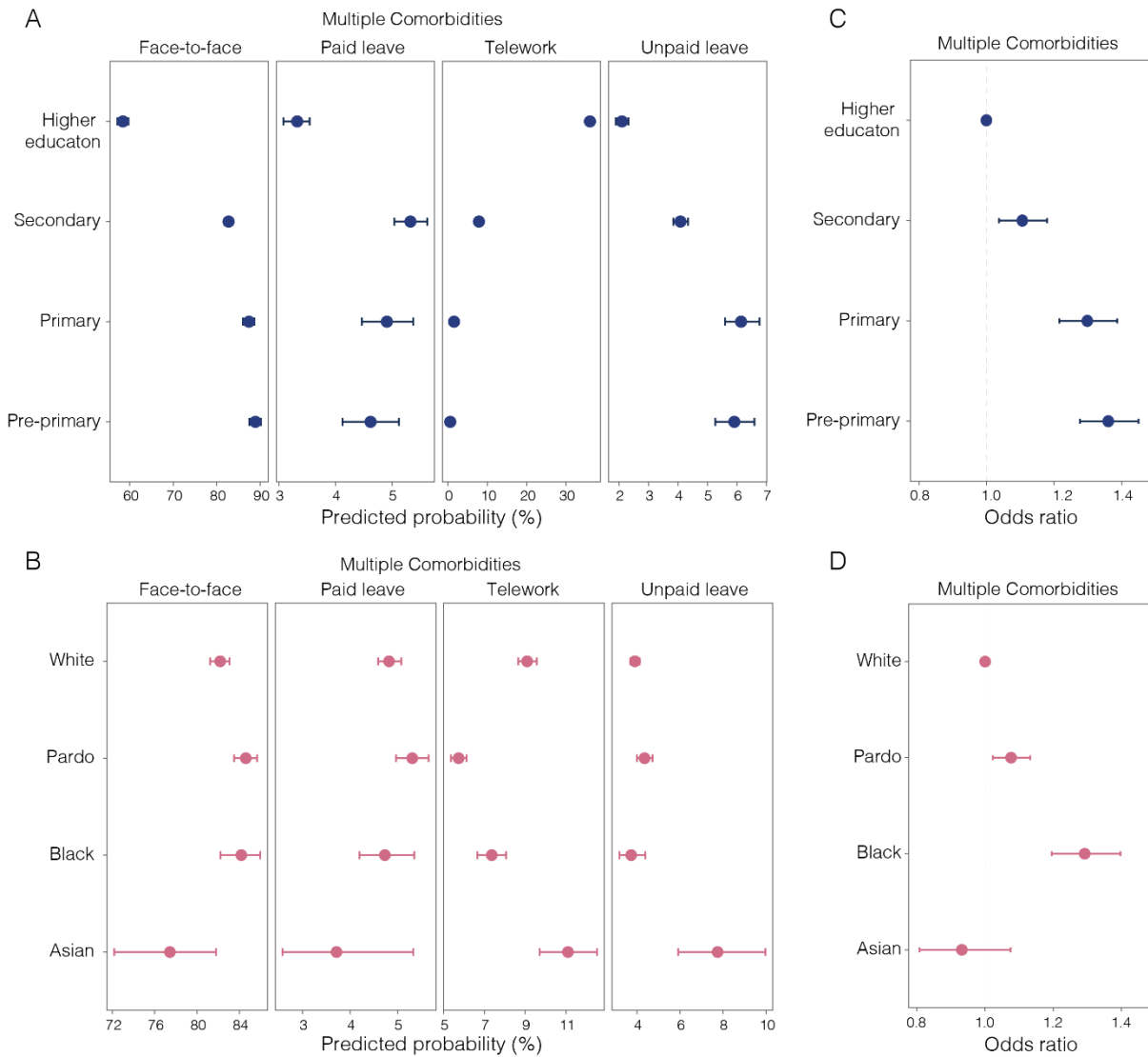
326

327 **Figure 4.** Relative risk of SARI hospitalisation for the RMSP (A). Seven-day moving  
 328 average of daily median levels in social distancing by race (B) and income (C).  
 329 Difference in daily social isolation by race (D) and income (E) after the introduction of  
 330 NPIs. In panels (B) and (C), solid lines show population-weighted median isolation  
 331 levels and shaded areas show population-weighted interquartile range (25% - 75%).  
 332 Dashed vertical lines indicate the dates of NPIs that enabled school closure (March  
 333 13 was the state NPI) and non-essential activities (March 18 and 22, municipal and  
 334 state NPIs, respectively).

335

336 Finally, we investigated the differential risk to SARI based on workers' position in the  
337 labour market using data from the PNAD COVID-19 survey. After the introduction of  
338 NPIs, workers employed in low-skilled jobs or essential services were more likely to  
339 keep working face-to-face than workers in professional or managerial positions  
340 (Supplementary Appendix B - figure S3). Workers with pre-primary education were  
341 more likely to work in occupations that require in-person contact than workers with  
342 tertiary education (Probability: 0.89, 95% CI: 0.87 – 0.90 compared to PR: 0.58, 95%  
343 CI: 0.57 – 0.60) and less likely to work in occupations that allow teleworking (PR:  
344 0.005, 95% CI: 0.004 – 0.007 versus PR: 0.36 95% CI: 0.35 – 0.37, respectively)  
345 (figure 5A). When controlling for education and formal or informal employment, we  
346 found no substantial difference between racial groups in the probability of working  
347 face-to-face or teleworking (figure 5B).

348 We found that population groups at risk of death from SARI were also more likely to  
349 have comorbidities. Compared to the population with tertiary education in São Paulo  
350 state, individuals with primary education or lower are more likely to have one or more  
351 comorbidities (OR: 1.36, 95% CI: 1.27 – 1.45) (figure 5C). Similarly, Black individuals  
352 were also more likely to have one or more comorbidities than White individuals (OR:  
353 1.29, 95% CI: 1.19 – 1.39) (figure 5D). Odds ratio estimates for each health condition  
354 are summarised in Supplementary Appendix B – figure S4.



355

356 **Figure 5:** Probability of different working conditions by education attainment (A) and  
 357 race (B). Odds ratio (OR = 1) of having multiple comorbidities: chronic obstructive  
 358 pulmonary disease (COPD), diabetes, hypertension or cardiovascular disease such  
 359 as infarction, angina, and heart failure by education attainment (C) and race (D).  
 360 Horizontal lines show 95% confidence intervals. Source: PNAD COVID-19 /IBGE 17,  
 361 July to September, 2020.

362

363 **Discussion**

364 Our study shows that disadvantaged hospitalised groups are disproportionately more  
 365 likely to die from SARI. We find that the differential health outcomes can be explained  
 366 by structural inequities linked to the incidence of comorbidities and to socioeconomic



367 status, which limit the ability of these groups to socially isolate and reduce their access  
368 to optimal health services.

369

370 Social and racial inequalities shape the risk of SARI hospitalisation and death. After  
371 the initial phase of international imports in Brazil <sup>12</sup>, Black or *Pardo* Brazilians residing  
372 in low-income areas were more likely to be hospitalised and die with SARI compared  
373 to White individuals, which aligns with recent findings <sup>7</sup>. Our assessment of anti-SARS-  
374 CoV-2 antibodies in blood donors categorised by demographic background further  
375 confirms that Black Brazilians and those with lower socioeconomic status are  
376 disproportionately exposed to COVID-19. While patients hospitalised in public health  
377 facilities were more likely to die than those in private health facilities, racial inequalities  
378 in death probability are attenuated when only considering patients within hospitals of  
379 the same type, either public or private. Potential factors influencing this inequality  
380 include higher comorbidities among poor Black patients and the lower access to  
381 private care among low-income individuals that are disproportionately Black.

382

383 We found higher hospitalisation risk for those living in municipalities with low income  
384 per capita and high population density compared to the rest of São Paulo state. These  
385 populations mainly reside in the RMSP, which contains nearly half of the population  
386 in São Paulo state and where bias in testing is evident in regions of lower  
387 socioeconomic status <sup>12</sup> (Supplementary Appendix B – figure S5). The risk of SARI  
388 hospitalisation is particularly elevated in São Paulo city, where seroprevalence  
389 estimates from blood donors show that anti-SARS-CoV-2 antibodies were highest in  
390 older Black Brazilians and those with lower educational attainment.

391

392 We show that inequalities in the risk of SARI hospitalisation were partially explained  
393 by differential mobility responses to social distancing guidelines, similar to the US <sup>22</sup>.  
394 In wealthier and predominantly White neighbourhoods, people were able to isolate  
395 faster and sustain isolation for long periods of time. Among the working population,  
396 low-income and Black workers were less likely to receive a furlough from work or  
397 telework. Due to systemic inequalities in education and the labour market, these

398 groups are disproportionately employed in precarious job positions with no social  
399 security and dependent on day-to-day income <sup>23</sup>, limiting their ability to reduce  
400 mobility. Other important factors include the disadvantage of having multiple  
401 comorbidities, which are more prevalent among Blacks and *Pardos* and those with  
402 lower education.

403

404 Our study has limitations that may have underestimated the level of inequality. Firstly,  
405 geocoding cases may have discarded patients from poor census tracts where  
406 accuracy is limited <sup>24</sup>. Secondly, using data aggregated for various administrative  
407 levels has inherent limitations due to ecological fallacy and the modifiable areal unit  
408 problem <sup>25</sup>. Finally, the 2010 Brazilian population census and PNAD COVID-19 survey  
409 may have limited the capture of socioeconomic changes in the last decade and  
410 inclusion of extremely wealthy individuals <sup>26</sup>. Additionally, disadvantaged groups can  
411 be underrepresented in health administrative records because of their lower access  
412 to healthcare. Given that São Paulo is the wealthiest state and has the most robust  
413 healthcare system in Brazil <sup>27</sup>, it is possible that the impact of inequalities is more  
414 severe in other states.

415

416 Our findings on the difference in risk of SARI death reveal stark inequalities in access  
417 to healthcare. Only 25% of Brazilians have access to private healthcare via health  
418 insurance, reflecting how inequality in access to quality healthcare is largely driven by  
419 income <sup>28</sup>. This leaves 75% of the population solely reliant on a chronically  
420 underfunded public healthcare system, which highlights that disadvantaged  
421 populations are more likely to be infected and deprived of care. Strengthening  
422 healthcare access and its capacity will be critical for reducing health inequities during  
423 this and forthcoming public health emergencies <sup>29</sup>.

424

425 Our findings on socioeconomic risk factors could help guide vaccine allocation in  
426 diverse settings to achieve equitable access. Ensuring that disadvantaged groups,  
427 especially those that have in-person occupations and live in crowded and deprived  
428 areas receive vaccination will help prevent and slow down community transmission.

429 While race is not a risk factor in itself, it is critical to consider systemic inequalities that  
430 lead Black and *Pardo* communities to be overrepresented among low socioeconomic  
431 groups, to have higher rates of severe COVID-19 infection, and comorbidities that  
432 exacerbate their risk of death. Therefore, including disadvantaged populations among  
433 priority groups for vaccination could help reduce health inequities instead of  
434 exacerbating them <sup>30</sup>.

435

436 Our study highlights the need for additional research to comprehend the effects of  
437 social and health inequalities during pandemics. Firstly, an assessment of the  
438 inequality in access to quality care within public and private health facilities and its risk  
439 factors is needed to better understand mortality in different hospital settings. Secondly,  
440 our study shows that population response to NPIs can vary significantly based on  
441 social circumstances, suggesting that future studies should also consider  
442 socioeconomic aspects when evaluating the effectiveness of NPIs. Thirdly, more data  
443 is needed on whether social safety net programs that are guaranteeing income for  
444 disadvantaged groups during the pandemic (e.g., Brazil's emergency cash payment),  
445 may have enabled people to reduce their mobility. Nevertheless, our study has shown  
446 the impact of social inequities on COVID-19 hospitalisation and death, thus informing  
447 future research and policies related to the health impacts of COVID-19 in Latin  
448 America.

449

450 **Contributors**

451 SLL and RHMP conceived the research questions and designed the study. RHMP,  
452 CAPJ, LE, PJHA, PSP, CKB, AASS, WMS, RJB, LFB, AM, CAN, SCF, and NAS  
453 collected the epidemiological, socioeconomical, mobility, NPIs, seroprevalence, and  
454 comorbidities data. SLL, RHMP, CAPJ, AEZ, LE, PJHA, CKB, RJB, and VN conducted  
455 exploratory and statistical analysis and interpreted the results. SLL, RHMP, and CAPJ  
456 wrote the manuscript. All authors read and revised the final manuscript.

457

458 **Acknowledgement**

459 SLL is supported by the Oxford Martin School and the Canadian Social Sciences and  
460 Humanities Doctoral Fellowship. CAPJ is supported by Coordenação de  
461 Aperfeiçoamento de Pessoal de Nível Superior - Brasil (CAPES) and Fundação  
462 Faculdade de Medicina (FFM). AEZ is supported by The Oxford Martin Programme  
463 on Pandemic Genomics. WMS is supported by the São Paulo Research Foundation,  
464 Brazil (2017/13981-0 and 2019/24251-9). NRF is supported by a Wellcome Trust and  
465 Royal Society Sir Henry Dale Fellowship (204311/Z/16/Z).

466

467

468 **References**

- 469 1 Ahmed F, Ahmed N, Pissarides C, Stiglitz J. Why inequality could spread COVID-  
470 19. *Lancet Public Health* 2020; **5**: e240.
- 471 2 Walker PGT, Whittaker C, Watson OJ, *et al.* The impact of COVID-19 and strategies  
472 for mitigation and suppression in low- and middle-income countries. *Science* 2020;  
473 **369**: 413–22.
- 474 3 Drefahl S, Wallace M, Mussino E, *et al.* A population-based cohort study of socio-  
475 demographic risk factors for COVID-19 deaths in Sweden. *Nat Commun* 2020; **11**:  
476 5097.
- 477 4 UK Office for National Statistics. Coronavirus (COVID-19) related deaths by ethnic  
478 group, England and Wales - Office for National Statistics. 2020  
479 [https://www.ons.gov.uk/peoplepopulationandcommunity/birthsdeathsandmarriage](https://www.ons.gov.uk/peoplepopulationandcommunity/birthsdeathsandmarriages/deaths/articles/coronavirusrelateddeathsbyethnicgroupenglandandwales/2march2020to10april2020)  
480 [s/deaths/articles/coronavirusrelateddeathsbyethnicgroupenglandandwales/2marc](https://www.ons.gov.uk/peoplepopulationandcommunity/birthsdeathsandmarriages/deaths/articles/coronavirusrelateddeathsbyethnicgroupenglandandwales/2march2020to10april2020)  
481 [h2020to10april2020](https://www.ons.gov.uk/peoplepopulationandcommunity/birthsdeathsandmarriages/deaths/articles/coronavirusrelateddeathsbyethnicgroupenglandandwales/2march2020to10april2020) (accessed Nov 20, 2020).
- 482 5 Cummings MJ, Baldwin MR, Abrams D, *et al.* Epidemiology, clinical course, and  
483 outcomes of critically ill adults with COVID-19 in New York City: a prospective  
484 cohort study. *The Lancet* 2020; **395**: 1763–70.
- 485 6 Pan D, Sze S, Minhas JS, *et al.* The impact of ethnicity on clinical outcomes in  
486 COVID-19: A systematic review. *EClinicalMedicine* 2020; **23**: 100404.
- 487 7 Baqui P, Bica I, Marra V, Ercole A, Schaar M van der. Ethnic and regional variations  
488 in hospital mortality from COVID-19 in Brazil: a cross-sectional observational study.  
489 *Lancet Glob Health* 2020; **8**: e1018–26.
- 490 8 Facundo A, Chancel, Lucas, Piketty, Thomas, Saez, Emmanuel, Zucman, Gabriel.  
491 World Inequality Report 2018. 2017.
- 492 9 Jesus JG de, Sacchi C, Candido D da S, *et al.* Importation and early local  
493 transmission of COVID-19 in Brazil, 2020. *Rev Inst Med Trop São Paulo* 2020; **62**:  
494 e30.
- 495 10 Henriques CMP, Vasconcelos W, Henriques CMP, Vasconcelos W. Crises  
496 dentro da crise: respostas, incertezas e desencontros no combate à pandemia da  
497 Covid-19 no Brasil. *Estud Av* 2020; **34**: 25–44.
- 498 11 Rezende LFM, Thome B, Schweitzer MC, *et al.* Adults at high-risk of severe  
499 coronavirus disease-2019 (Covid-19) in Brazil. *Rev Saúde Pública* 2020; **54**.  
500 DOI:10.11606/s1518-8787.2020054002596.
- 501 12 de Souza WM, Buss LF, Candido D da S, *et al.* Epidemiological and clinical  
502 characteristics of the COVID-19 epidemic in Brazil. *Nat Hum Behav* 2020; **4**: 856–  
503 65.

- 504 13 Secretaria da saúde do estado de São Paulo. SIMI-SP: Pacientes internados por  
505 Síndrome Respiratória Aguda Grave (SRAG).  
506 <https://www.saopaulo.sp.gov.br/planosp/simi/> (accessed Oct 25, 2020).
- 507 14 Niquini RP, Lana RM, Pacheco AG, *et al.* SRAG por COVID-19 no Brasil:  
508 descrição e comparação de características demográficas e comorbidades com  
509 SRAG por influenza e com a população geral. *Cad Saúde Pública* 2020; **36**:  
510 e00149420.
- 511 15 Hasell J, Mathieu E, Beltekian D, *et al.* A cross-country database of COVID-19  
512 testing. *Sci Data* 2020; **7**: 345.
- 513 16 Telles E, Paschel T. Who Is Black, White, or Mixed Race? How Skin Color,  
514 Status, and Nation Shape Racial Classification in Latin America. *Am J Sociol* 2014;  
515 **120**: 864–907.
- 516 17 IBGE - Instituto Brasileiro de Geografia e Estatística (2020). Pesquisa Nacional  
517 por Amostra de Domicílios Contínua (PNAD) COVID-19. Microdados. .
- 518 18 Peixoto PS, Marcondes D, Peixoto C, Oliva SM. Modeling future spread of  
519 infections via mobile geolocation data and population dynamics. An application to  
520 COVID-19 in Brazil. *PLOS ONE* 2020; **15**: e0235732.
- 521 19 De Souza Santos AA, Da Silva Cândido D, Marciel De Souza W, *et al.* SARS-  
522 CoV-2 non-pharmaceutical interventions in Brazilian municipalities. 2020; :  
523 1046406 bytes.
- 524 20 Buss LF, Prete CA, Abraham CMM, *et al.* Three-quarters attack rate of SARS-  
525 CoV-2 in the Brazilian Amazon during a largely unmitigated epidemic. *Science*  
526 2020; published online Dec 8. DOI:10.1126/science.abe9728.
- 527 21 Weill JA, Stigler M, Deschenes O, Springborn MR. Social distancing responses  
528 to COVID-19 emergency declarations strongly differentiated by income. *Proc Natl*  
529 *Acad Sci* 2020; **117**: 19658–60.
- 530 22 Chang S, Pierson E, Koh PW, *et al.* Mobility network models of COVID-19 explain  
531 inequities and inform reopening. *Nature* 2020; : 1–8.
- 532 23 Lustig N, Pabon VM, Sanz F, Younger SD. The Impact of COVID-19 Lockdowns  
533 and Expanded Social Assistance on Inequality, Poverty and Mobility in Argentina,  
534 Brazil, Colombia and Mexico. ECINEQ, Society for the Study of Economic  
535 Inequality, 2020 <https://ideas.repec.org/p/inq/inqwps/ecineq2020-558.html>  
536 (accessed Nov 20, 2020).
- 537 24 Giest S, Samuels A. ‘For good measure’: data gaps in a big data world. *Policy*  
538 *Sci* 2020; **53**: 559–69.

- 539 25 Duranton G, Overman HG. Testing for Localization Using Micro-Geographic  
540 Data. *Rev Econ Stud* 2005; **72**: 1077–106.
- 541 26 Souza PHGF de. A distribuição de renda nas pesquisas domiciliares brasileiras:  
542 harmonização e comparação entre Censos, PNADs e POFs. *Rev Bras Estud Popul*  
543 2015; **32**: 165–88.
- 544 27 Paim J, Travassos C, Almeida C, Bahia L, Macinko J. The Brazilian health  
545 system: history, advances, and challenges. *The Lancet* 2011; **377**: 1778–97.
- 546 28 Nogueira Avelar e Silva R, Russo G, Matijasevich A, Scheffer M. Covid-19 in  
547 Brazil has exposed socio-economic inequalities and underfunding of its public  
548 health system. *The BMJ*. 2020; published online June 19.  
549 [https://blogs.bmj.com/bmj/2020/06/19/covid-19-in-brazil-has-exposed-deeply-](https://blogs.bmj.com/bmj/2020/06/19/covid-19-in-brazil-has-exposed-deeply-rooted-socio-economic-inequalities-and-chronic-underfunding-of-its-public-health-system/)  
550 [rooted-socio-economic-inequalities-and-chronic-underfunding-of-its-public-health-](https://blogs.bmj.com/bmj/2020/06/19/covid-19-in-brazil-has-exposed-deeply-rooted-socio-economic-inequalities-and-chronic-underfunding-of-its-public-health-system/)  
551 [system/](https://blogs.bmj.com/bmj/2020/06/19/covid-19-in-brazil-has-exposed-deeply-rooted-socio-economic-inequalities-and-chronic-underfunding-of-its-public-health-system/) (accessed Nov 20, 2020).
- 552 29 Castro MC, Carvalho LR de, Chin T, *et al*. Demand for hospitalization services  
553 for COVID-19 patients in Brazil. *medRxiv* 2020; : 2020.03.30.20047662.
- 554 30 Emanuel EJ, Persad G, Kern A, *et al*. An ethical framework for global vaccine  
555 allocation. *Science* 2020; **369**: 1309–12.
- 556