

1 **Declining HIV incidence in sub-Saharan Africa: a systematic review**
2 **and meta-analysis of empiric data**

3
4 Keya Joshi^{1,2}, Justin Lessler², Oluwasolape Olawore², Gideon Loevinsohn^{2,3}, Sophrena Bushey², Aaron
5 A.R. Tobian^{2,4}, M. Kate Grabowski^{2,4}

- 6
7 1. Department of Epidemiology, Harvard TH Chan School of Public Health, Cambridge, MA, USA
8 2. Department of Epidemiology, Johns Hopkins Bloomberg School of Public Health, Baltimore, MD,
9 USA
10 3. Johns Hopkins University School of Medicine, Baltimore, MD, USA
11 4. Department of Pathology, Johns Hopkins School of Medicine, Baltimore, MD, USA

12
13 Corresponding author: M. Kate Grabowski, Suite 446C Carnegie Building, 600 N. Wolfe St., Baltimore,
14 MD, USA 21287, mgrabow2@jhu.edu

15
16

17 **ABSTRACT (249/250)**
18

19 **Background:** UNAIDS models suggest HIV incidence is declining in sub-Saharan Africa; however, it is
20 unclear whether modeled trends are supported by empirical evidence.

21
22 **Methods:** We conducted a systematic review and meta-analysis of adult HIV incidence data from sub-
23 Saharan Africa by searching Embase, Scopus, PubMed, and OVID databases and technical reports
24 published between January 1, 2010 and July 23, 2019. We included studies that directly measured
25 incidence from blood samples. Incidence data were abstracted according to population risk group,
26 geographic location, sex, intervention arm, and calendar period. Weighted regression models were used to
27 assess incidence trends across general population studies by sex. We also identified studies reporting ≥ 3
28 incidence measurements since 2010 and assessed trends within them.

29
30 **Findings:** 292 studies met inclusion criteria. Most studies were conducted in South Africa (n=102),
31 Uganda (n=46), and Kenya (n=41); there were 27 countries with no published incidence data, most in
32 western and central Africa. Across general population studies, average annual incidence declines since
33 2010 were 0.16/1000 person-years (95% CI:0.06-0.26;p=0.004) among men and 0.16/1000 person-years
34 (95% CI: -0.01-0.33;p=0.060) among women in eastern Africa, and 0.25/1000 person-years (95% CI:0.17-
35 0.34;p<0.0001) among men and 0.42/1000 person-years (95% CI:0.23-0.62;p=0.0002) among women in
36 southern Africa. In 9/10 studies with multiple measurements, incidence declined over time. Incidence was
37 typically higher in women than men (median ratio=1.45, IQR: 1.12-1.83) with increasing sex disparity
38 over time.

39

40 **Interpretation:** Empirical incidence data show the rate of new HIV infections is declining in eastern and
41 southern Africa. However, recent incidence data are non-existent or very limited for many countries,
42 particularly in western and central Africa.

43 **Funding:** National Institute of Allergy and Infectious Diseases

44

45

46 INTRODUCTION

47 Nearly 40 years into the HIV pandemic, sub-Saharan Africa remains the global epicenter of HIV
48 transmission, accounting for 57% of all new infections in 2019¹. Within most African countries,
49 transmission continues to be generalized with substantial rates of new infections outside of clearly defined
50 risk groups, particularly in eastern and southern Africa¹. Widespread community transmission within the
51 region has spurred substantial investment in population-based infection control measures, including
52 biomedical and behavioral interventions. Domestic and international donors, including the Global Fund to
53 Fight AIDS, Tuberculosis, and Malaria and the United States President's Emergency Plan for AIDS
54 Relief (PEPFAR), continue to support HIV programming in sub-Saharan African with significant
55 financial and human resources investment in large-scale HIV testing, prevention, and treatment programs.
56 However, global funding for HIV programming within Africa is waning, potentially jeopardizing progress
57 towards UNAIDS fast track goals to end the African epidemic by 2030². Measuring the impact of
58 programmatic investments to control HIV is critical for demonstrating headway, appropriately targeting
59 future funding and other resources, and ensuring a sustained global commitment to ending the HIV
60 pandemic.

61

62 Key epidemiologic metrics of HIV control include absolute rates of HIV incidence and AIDS-related
63 deaths and percent reductions in new infections and AIDS-related deaths among other benchmarks^{3,4}.
64 While each of these control criteria provide key insights into epidemic trajectories, HIV incidence is
65 arguably the most important of these metrics because it is less impacted by fluctuations in non-HIV
66 mortality and more comparable across different population and geographic settings⁴. However, directly
67 observed HIV incidence measurements are difficult to obtain partly due to delays in testing following
68 infection, limited availability of testing to detect early HIV infections, and difficulty enumerating and
69 following populations at risk. Thus, data on HIV incidence trends in sub-Saharan Africa predominantly

70 come from UNAIDS mathematical models which use demographic, HIV prevalence, and programmatic
71 data⁵⁻⁸. Based on these models, UNAIDS reports HIV incidence is steadily declining across sub-Saharan
72 Africa. However, there are limited direct empirical data supporting these modeled downward trends. The
73 last comprehensive systematic review of the empiric HIV incidence literature from sub-Saharan Africa
74 was published in 2009⁹. This prior review, including only 57 studies, found that HIV incidence data from
75 western and central Africa were rare and that estimates varied substantially within country and across
76 population risk groups: no trend data were analyzed.

77

78 Here, we provide an update on empirical HIV incidence data published over the last decade. Our
79 systematic review and meta-analysis includes all studies reporting directly observed HIV incidence
80 measurements obtained using serologic assays either through prospective or cross-sectional assessments.
81 Data were stratified by gender and risk group where possible. Regional variation in incidence data are
82 reported along with trends over time across and within studies, by sex, and across various population risk
83 groups, including men who have sex with men (MSM) and sex workers.

84

85

86

87

88

89

90

91

92

93

94

95

96

97 **METHODS**

98 **Screening and Extraction Protocol**

99 We performed a systematic literature review and meta-analysis to identify studies on HIV incidence from
100 sub-Saharan Africa published between January 1, 2010 and July 23, 2019. We searched PubMed,
101 Embase, Scopus, and OVID global health databases for peer-reviewed articles reporting directly observed
102 (i.e. empirical) estimates of HIV incidence measured through either prospective repeat testing or cross-
103 sectional HIV incidence testing of blood samples. We used the following search terms “HIV”,
104 “incidence”, and “Africa” as medical subject heading (MESH) terms. Additional clinical synonyms and
105 alternative spellings were also included in the search (see supplemental methods for full search criteria).
106 Technical reports measuring population-level HIV incidence, but not published in peer-reviewed journals,
107 such as the population-based HIV impact assessment (PHIA) surveys, were also included.

108
109 Our analysis included peer-reviewed studies and technical reports including national or subnational
110 empiric estimates of HIV incidence from sub-Saharan Africa. We excluded studies of HIV not in humans,
111 studies reporting incidence estimates for children < 15 years of age only, studies not in English,
112 perspectives, opinions, commentaries, case-control studies, studies measuring impact of post-exposure
113 prophylaxis among health care workers (HCW), cross-sectional incidence studies only including HIV-
114 positive persons, and incidence estimates based on mathematical models. We further excluded studies
115 with incidence estimates based on less than 50 total participants or less than 50 person-years at risk

116
117 After removal of duplicates, all studies identified through the database search were uploaded to the
118 Covidence systematic review management software and then screened by two independent reviewers (KJ,
119 SB, GL, OO)¹⁰. Studies first went through a title and abstract review. Those deemed eligible went through
120 further full text review. As defined in the protocol, any disagreement at each stage was resolved through
121 consensus.

122 We extracted standardized data from each study including study design, study cohort, geographic location
123 (ISO1-ISO3, where applicable), dates of data collection (i.e. the study period), incidence rate (including
124 95% confidence intervals [95% CI] and standard errors [SE]), cumulative incidence (including 95% CIs
125 and SEs), person-years (pys) at risk, number of HIV seroconversions, number of individuals in the study
126 overall and by sex and age where applicable, total numbers of HIV-negative and positive participants at
127 baseline, and a description of the intervention if the study was a randomized clinical trial (RCT). Data
128 from multi-center RCTs were disaggregated by site if possible. Incidence rates were further disaggregated
129 by sex, age group/range, population risk group, and intervention arm when available. Population risk
130 groups included sex workers (SW), men who have sex with men (MSM), transgender women (TGW),
131 pregnant women (PW), serodiscordant couples (SDC), Lake Victoria fisherfolk (FF), other high risk
132 populations (e.g., women with multiple sexual partners; bar workers), and general populations (i.e.,
133 geographically defined populations with no defining characteristics beyond location of residency). For
134 studies measuring cross sectional incidence through either BEDTM capture enzyme immunoassay (BED-
135 CEIA) or Limiting Antigen avidity (LA_g-Avidity) enzyme immunoassay, we also recorded information
136 on the window period, false recency rate and optical density (OD) reported.

137
138 For incidence rates, all estimates were converted to number of seroconversions per 100 pys at risk. We
139 did not assess study quality or perform a risk of bias assessment for three reasons: (1) rates of HIV
140 incidence were expected to vary across geography and between risk groups, (2) our primary objective was
141 to summarize incidence data as opposed to assessing the causal impact of any particular intervention or
142 exposure, and (3) there was substantial heterogeneity in the methods used to obtain incidence estimates.

143 144 **Statistical Analysis**

145 Studies were grouped into geographic regions as defined by the UN Statistics Division¹¹. However,
146 Malawi, Mozambique, Zambia and Zimbabwe were categorized as part of the southern region, and Sudan

147 as part of the eastern region, due to the similarity of their epidemic, most notably subtype distribution,
148 with other countries in those respective regions.

149

150 We summarized HIV incidence trends across general population studies over calendar time for eastern
151 and southern Africa by using weighted loess regression for studies in which the calendar midpoint of the
152 data collection period occurred on or after October 8, 2006 (i.e., the $\geq 25^{\text{th}}$ percentile of the distribution of
153 data collection calendar midpoints). Weights corresponded to the study size (N) of the population. In
154 order to estimate the rate of change in incidence since 2010, we fit weighted linear regression models
155 weighted by study size for all studies in which the calendar midpoint of the data collection period was in
156 2010 or later. For countries where study size was not reported for a specific time-point, the most recent
157 study size reported either at follow-up or baseline was used. All trend analyzes were stratified by sex. We
158 excluded studies that only reported incidence estimates for men and women combined, age-specific
159 incidence estimates for age bins less than 26 years, and studies that reported incidence estimates for non-
160 general population subgroups. The 26 year cutoff was chosen because it was the smallest age bin
161 including more than two thirds ($>70\%$) of the adult population most at risk for HIV, typically defined as
162 15-49 years old. For studies where CIs were not reported, we derived exact confidence intervals based on
163 a Poisson distribution. Studies that did not report an upper or lower age limit were included (e.g., studies
164 that reported a minimum enrollment of 15 years but no max age enrollment), but these studies were
165 excluded in sensitivity analyses. Point estimates were plotted at the midpoint of the data collection period
166 (e.g. if a study was conducted from January 1, 2010 to December 31, 2010, the study midpoint would be
167 July 2, 2010) with bars indicating the entire length of the collection period (e.g. January 1, 2010 and
168 December 31, 2010). Trends in HIV incidence were not examined for western or central Africa or for
169 other population risk groups given limited availability of incidence data.

170

171 We further summarized recent incidence trends over the last decade within study cohorts over time using
172 linear regression models. This analysis was limited to studies that reported incidence estimates for at least

173 three unique calendar periods since January 1, 2010. For studies that reported age-stratified estimates, we
174 used incidence metrics for the widest age bin reported, but did not restrict based on age-bin size.

175

176 We constructed forest plots to summarize HIV incidence rates and 95% confidence intervals by region
177 and risk group. For studies where incidence estimates were reported for multiple time periods, we only
178 included the most recent estimate. Similarly, if multiple studies reported estimates from the same cohort,
179 we used the most recent estimate available. For RCTs, we included the estimate from the control arm
180 only. For studies reporting estimates disaggregated by type of hormonal contraceptive use, we included
181 the incidence estimate among women using either no contraceptive, or non-hormonal contraceptives. For
182 studies reporting both national and sub-national incidence data, estimates at the national level only were
183 included. For general population studies, we only reported incidence estimates for age bins spanning 26
184 years or greater.

185

186 All analyses were conducted in R (version 3.6.2) and Stata (version 14).

187

188 **Role of the funding source**

189 The funders of the study had no role in study design, data collection, data analysis, data interpretation, or
190 writing of the report. The corresponding author had full access to all the data in the study and had final
191 responsibility for the decision to submit the application.

192

193 **RESULTS**

194

195 There were 34,781 records retrieved through the database searches and an additional 11 technical reports
196 identified and included. After duplicates were removed, 18,295 records remained. 17,890 records were
197 excluded after title and abstract screening, with 405 records remaining for full text review. Of these, 113
198 studies were excluded due to not meeting pre-specified inclusion criteria. There were 292 studies that
199 reported some form of HIV incidence data (e.g., cumulative incidence, number of seroconversions,
200 incidence rate), and 237 for which at least one incidence rate estimate was reported or could be derived
201 (n = 229 reported and n = 8 derived, Figure 1; Supplemental Table 1).

202

203 The 292 studies reported incidence data from 23 sub-Saharan countries (Figure 2A). Most studies were
204 conducted in South Africa (n = 102), Uganda (n = 46), Kenya (n = 41), Zimbabwe (n = 21) and Tanzania
205 (n = 14). Of note, there were 43 incidence estimates reported from multi-country studies (e.g. studies
206 reporting combined estimates from two or more countries). While the number of studies published per
207 country correlated with total case burden (Figure 2B), there were 26 countries in sub-Saharan Africa with
208 no published incidence data. The majority of these countries were in western and central Africa, including
209 Angola, Cape Verde, Central African Republic, Chad, Congo, Democratic Republic of Congo, Djibouti,
210 Equatorial Guinea, Eritrea, Gabon, Gambia, Guinea, Liberia, Madagascar, Mauritius, Sierra Leone,
211 Senegal, South Sudan, and Togo.

212

213 Figure 2C shows the number of studies reporting incidence data versus the prevalence of infection at the
214 country level using 2018 national prevalence estimates from USAID¹². Of the five countries with the
215 highest HIV prevalence, there were only two with more than 10 studies published since 2010 (South
216 Africa with 102 estimates and an HIV prevalence of 20.4%, Zimbabwe with 21 estimates and a
217 prevalence of 12.7%). The remaining three countries, eSwatini, Lesotho, and Botswana had prevalences

218 of 27.3%, 23.6% and 20.3%, but only had 4, 3, and 5, incidence studies published, respectively (Figure
219 3A).

220
221 Publication of incidence data fluctuated little over calendar time (Figure 3A). Most incidence estimates
222 were derived from prospective observational cohort studies (n=163), followed by secondary analyses of
223 RCTs (n = 46), cross-sectional incidence studies (n = 42), primary analyses of RCTs (n=34), serial cross-
224 sectional studies (n = 7), retrospective cohort studies (n = 6), and nested case control studies (n = 1). Of
225 note, there were 7 studies reporting incidence data from two design classifications. Figure 3B shows
226 studies disaggregated by population risk group. 152 estimates were drawn from GP studies, 41 from SDC,
227 33 from PW, 31 from sex workers SW, 11 from MSM, and 10 from FF communities in eastern Africa.

228
229 Next we summarized HIV incidence trends over calendar time for GP studies by sex and geographic
230 region (Figure 4). A total of 50 studies contributed 146 estimates (n=83 for women; n=63 for men) to the
231 analysis. Across both southern and eastern Africa, we observed declines in HIV incidence since 2010 in
232 both sexes. In eastern Africa, annual incidence declined by 0.16/1000 pys (95%CI: 0.06-0.26; p=0.004)
233 among men and by 0.16/1000 pys (95%CI: -0.01-0.33; p=0.060) among women. HIV incidence fell more
234 rapidly in southern Africa, declining by 0.25/1000 pys (95%CI: 0.17-0.34; p<0.0001) annually among
235 men and by 0.42/1000 pys (95%CI: 0.23-0.62; p=0.0002) annually among women. In sensitivity analyses,
236 we excluded studies that did not report either an upper or lower age range (n=15) and observed similar
237 trends (Supplemental Figure 1).

238
239 We also examined HIV incidence trends within studies that had more than three incidence rate
240 measurements in unique calendar periods since January 1, 2010 (Figure 5). Of the 292 studies, only 38
241 (13%) studies reported incidence rate estimates for more than one unique calendar period (Supplemental
242 Figure 2), and of these studies only 10 had 3 or more measurements since 2010. Within nine of these

243 studies, a decline in HIV incidence was observed over calendar time. The single outlier study showed
244 rising incidence among pregnant women in South Africa¹³.

245
246 Figures 6 summarizes the most recent HIV incidence estimates since 2010 for GP studies in southern
247 Africa. National estimates ranged from 0.37 per 100 pys in Malawi (2015-2016) to 2.4 per 100 pys in
248 eSwatini (2010-2011). However, by 2016-2017, HIV incidence declined to 1.13 per 100 pys in eSwatini.
249 There was substantial variation across national and sub-national incidence estimates in South Africa with
250 rates ranging 0.69 at the national level to 3.28 pys sub-nationally. Of the 4 measurements exceeding 2 per
251 100 pys, 3 were in South Africa and 1 in eSwatini. Overall, South Africa reported the highest rates of HIV
252 incidence in the general population, and these estimates were predominately concentrated in KwaZulu-
253 Natal, a coastal province in the southeast.

254
255 Supplemental Figure 3 shows the most recent HIV incidence estimates since 2010 for general population
256 studies in eastern Africa. Estimates ranged from 0.06 per 100 pys (95%CI: 0-0.12) in Ethiopia to 3.4 per
257 100 pys (no confidence interval reported) in Sudan. National studies were conducted in Ethiopia, Kenya,
258 Rwanda, Uganda, and Tanzania and all HIV incidence estimates were below 1 per 100 pys. There were
259 only two general population studies in west Africa since 2010, including the Cameroon PHIA in 2017-18
260 which reported an HIV incidence rate of 0.27 (95%CI: 0.14-0.41) per 100 pys¹⁴, and another study in
261 blood donors in Cote d'Ivoire (0.07 per 100 pys; 95%CI: 0.06-0.08)¹⁵.

262
263 We also collated recent HIV incidence estimates for key populations, including SW, MSM, and FF
264 (Supplementary Figures 4-6). Overall, there were few incidence estimates available for these groups since
265 2010; however, incidence rates in these populations were typically much higher than that observed in GP
266 studies. All estimates for SWs (n=7) were derived from cohort studies and ranged from 0.6 to 3.4 per 100
267 pys (Supplemental Figure 4). Incidence estimates among MSM cohorts (n=5) were highly variable
268 ranging from 1.03 per 100 pys (95% CI: 0.03-5.79) in Kenya to 15.4 per 100 pys (95%CI: 12.3-19) in

269 Nigeria (Supplemental Figure 5). Among FF populations, HIV incidence ranged from 1.59 to 6.04 per
270 100 pys (Supplemental Figure 6).

271

272 Lastly, we directly compared HIV incidence estimates between men and women within GP studies
273 (Figure 7). Of the 237 studies with incidence rates reported, 108 (46%) reported incidence estimates for
274 women only and 18 (8%) for men only. There were an additional 23 (10%) studies that reported
275 combined estimates for men and women only, and 88 (37%) studies reported sex stratified results
276 including both sexes. Among 44 GP studies reporting 96 sex stratified incidence estimates for age bins
277 ≥ 26 years, female HIV incidence was higher in 78 (81%) instances and the median female to male HIV
278 incidence ratio was 1.45 (IQR: 1.12-1.83) overall (Figure 7A). Temporal assessment of the female to
279 male incidence rate ratio showed evidence for growing disparity by sex over calendar time, increasing by
280 2.4% per year on average (95CI:1.14-3.74%, $p=0.0003$; Figure 7B).

281

282

283 **DISCUSSION**

284 Monitoring HIV incidence trends is critical for assessing progress and targeting resources. Our analysis of
285 directly observed HIV incidence data demonstrates that the rate of new infections is rapidly declining in
286 eastern and southern Africa among both men and women. These findings are consistent with UNAIDS
287 incidence models which have also shown reductions in new cases continent-wide over the last decade^{1,6}.
288 However, there are notable gaps in the availability of empiric HIV incidence data, particularly for western
289 and central Africa and among key populations, including MSM among whom HIV incidence was highest.
290 HIV incidence remains higher among women, despite overall reductions in acquisition risk in both sexes,
291 and the incidence gap between sexes appears to be growing with time.

292

293 The last comprehensive systematic review of the empiric HIV incidence literature in sub-Saharan Africa
294 was published in 2009 and included 57 studies conducted in 14 sub-Saharan African countries⁹. In this
295 this systematic review of incidence data published between 2010 and 2019, incidence estimates were
296 available for 23 sub- countries; however, data were non-existent or sparse in many countries. Of the 292
297 studies included in this study, only 20 (7%) were conducted in western and central Africa, despite this
298 region accounting for an estimated 25% of all incidence cases in sub-Saharan Africa in 2019¹. Critically,
299 16 countries in western and central Africa reported no incidence data at all, illuminating critical
300 geographic gaps in surveillance and interventional research efforts. While the number of studies
301 conducted per country tended to trend with higher HIV case burden and prevalence, there were several
302 countries with either moderately high case burden or prevalence reporting no or very limited data,
303 including the Democratic Republic of Congo and Equatorial Guinea. Similar geographic disparities in
304 incidence data have been reported earlier⁹.

305

306 We observed steadily declining HIV incidence rates across general population studies in eastern and
307 southern Africa since 2010. While HIV incidence was consistently higher among women than men, there
308 were significant reductions in incidence rates in both sexes. Notably, there was a 50% reduction in HIV
309 incidence in eSwatini between 2010 and 2017, the largest national decline reported. These broad
310 reductions in HIV incidence are likely the partial result of massive global efforts to rollout and scale-up
311 HIV prevention and treatment interventions, including antiretroviral therapy (ART) and voluntary
312 medical male circumcision (VMMC). Indeed, several population-based cohorts and RCTs have reported
313 on the link between ART and VMMC and declines in population-level incidence¹⁶⁻²².

314
315 Overall, only 16% of studies reported HIV incidence measurements at multiple time points within the
316 same study population. However, nearly half of these studies ended prior to 2010 before the scale-up of
317 major prevention and treatment interventions, resulting in unfortunate lost opportunity to evaluate their
318 impact. Of the ten studies that obtained more than two incidence measurements after 2010, all but one
319 showed evidence of declining HIV incidence, consistent with our analyses of incidence across general
320 population studies. Of note, two of these nine studies were conducted in high risk key populations, one
321 among Lake Victoria fisherfolk and the other among sex workers^{16,23}, suggesting incidence reductions
322 may not be exclusive to general population cohorts.

323
324 At the sub-national level we found substantial variation in HIV incidences rates. These findings are
325 consistent with recent a study that reported marked small-scale spatial heterogeneities in disease burden
326 across the continent²⁴. While some variation in rates is likely due to temporal heterogeneities, there were
327 countries that reported estimates over similar calendar periods (e.g., South Africa) with substantial
328 variation in incidence. Prior studies in South Africa have identified high risk corridors of transmission
329 with elevated HIV incidence rates compared to the surrounding population²⁵. Furthermore, these areas

330 tended to correlate with higher prevalence, suggesting that current maps of HIV prevalence, potentially in
331 combination with uptake of HIV prevention and treatment data, could be used to strategically implement
332 HIV programs and target interventions, such as pre-exposure prophylaxis (i.e., PrEP), to high risk
333 populations.

334

335 In general population studies, HIV incidence was nearly always higher among women, a finding
336 consistent with a recent systematic review of incidence among African adolescents and young adults 15-
337 24 years old²⁶. Notably, nearly half of all incidence studies were conducted among women, while just
338 under 10% were conducted among men only. A better understanding of incidence and associated risk
339 factors for transmission among men might potentially result in lower female transmission given the large
340 preponderance of heterosexual HIV transmission in Africa¹. Studies throughout Africa show lower uptake
341 of HIV prevention and treatment interventions among men, but also lower participation rates in many
342 HIV incidence studies²⁷. We also found the ratio of female to male HIV incidence increased over calendar
343 time. It is unclear what is driving this growing HIV disparity between men and women; however, lower
344 male susceptibility due to increasing VMMC coverage and higher female ART uptake may partially
345 explain this observation.

346

347 In line with prior systematic reviews^{28,29}, we found substantially higher estimates of HIV incidence
348 among key populations, including Lake Victoria fisherfolk, MSM, and sex workers, as compared to
349 general population cohorts. However, there were relatively few studies in these populations overall, and
350 among them there was substantial variation in HIV incidence. MSM had the highest HIV incidence rates
351 of any sub-group, consistent with prior studies showing extremely high HIV prevalence among African
352 MSM²⁸.

353

354 There are limitations to this study. First, the methods used to obtain HIV incidence estimates across
355 studies, including study design, testing algorithms, and definitions of incidence were highly variable.
356 Second, upper and lower age eligibility criteria were often unreported. In the case of general population
357 studies that did not report an upper or lower age bound, we imputed the range to be 15-65 years. In a
358 sensitivity analysis assessing incidence trends over calendar time, we excluded these studies and found no
359 qualitative differences in our inferences. Third, there were many countries and geographic locations for
360 which there were no incidence data available. It is unclear whether the data presented here are
361 representative of empirical trends in unobserved locations, most notably western and central Africa.
362 Reassuringly, our results are consistent with UNAIDS regional models of incidence trends also showing
363 declines in new cases over the same time frame¹. Additionally, our analysis of incidence trends were only
364 done among general population cohorts and thus may not reflect changes among key populations. Fourth,
365 published data may not be fully representative of all incidence data, particularly studies with higher
366 incidence rates may be more likely to be published than those with low or zero incidence. Lastly, the
367 results of this study may have been impacted by our own review methodologies, including the search
368 strategy and our inclusion and exclusion criteria. Critically, we excluded studies that were not in English,
369 which may explain some of the data gaps observed in western and central Africa.

370

371 In conclusion, our findings provide empirical evidence that HIV incidence in eastern and southern Africa
372 has declined over the last decade. The widespread scale-up and uptake of HIV treatment and prevention
373 interventions has been linked to incidence declines within individual studies previously¹⁶⁻²², and are likely
374 contributing to the broad scale incidence reductions observed here. Sustained commitment to these
375 programs and new investment in innovative technologies and approaches may ultimately help achieve
376 HIV elimination goals in sub-Saharan Africa. However, future successes remain in the balance as global
377 funding for HIV programs in low and middle-income countries dwindles². The COVID-19 pandemic
378 presents further challenges as critical resources are diverted and mobility restrictions impact uptake of

379 interventions, in particular, HIV testing and timely initiation of ART^{30,31}. Ongoing surveillance, including
380 addressing geographic and population disparities in HIV incidence data, will be critical to maintaining
381 and building upon past success in the coming decade.

382

383 **References**

- 384
- 385 1 2020 Global AIDS Update □— Seizing the moment □— Tackling entrenched inequalities to end
386 epidemics | UNAIDS. <https://www.unaids.org/en/resources/documents/2020/global-aids-report>
387 (accessed Oct 7, 2020).
- 388 2 Kates J, Wexler A. Donor Government Funding for HIV in Low- and Middle-Income Countries in
389 2019.
- 390 3 Ghys PD, Williams BG, Over M, Hallett TB, Godfrey-Faussett P. Epidemiological metrics and
391 benchmarks for a transition in the HIV epidemic. *PLoS Med* 2018; **15**: e1002678.
- 392 4 Galvani AP, Pandey A, Fitzpatrick MC, Medlock J, Gray GE. Defining control of HIV epidemics.
393 *Lancet HIV* 2018; **5**: e667–e670.
- 394 5 GBD 2017 HIV collaborators. Global, regional, and national incidence, prevalence, and mortality of
395 HIV, 1980-2017, and forecasts to 2030, for 195 countries and territories: a systematic analysis for the
396 Global Burden of Diseases, Injuries, and Risk Factors Study 2017. *Lancet HIV* 2019; **6**: e831–e859.
- 397 6 Mahy M, Marsh K, Sabin K, Wanyeki I, Daher J, Ghys PD. HIV estimates through 2018: data for
398 decision making. *AIDS* 2019; published online July 22. DOI:10.1097/QAD.0000000000002321.
- 399 7 Eaton JW, Brown T, Puckett R, *et al.* The Estimation and Projection Package Age-Sex Model and the
400 r-hybrid model: new tools for estimating HIV incidence trends in sub-Saharan Africa. *AIDS* 2019; **33**
401 Suppl 3: S235–S244.
- 402 8 Stover J, Brown T, Puckett R, Peerapatanapokin W. Updates to the Spectrum/Estimations and
403 Projections Package model for estimating trends and current values for key HIV indicators. *AIDS*
404 2017; 31 Suppl 1: S5–S11.
- 405 9 Braunstein SL, van de Wijgert JHHM, Nash D. HIV incidence in sub-Saharan Africa: a review of
406 available data with implications for surveillance and prevention planning. *AIDS Rev* 2009; **11**: 140–
407 156.
- 408 10 Covidence - Better systematic review management. <https://www.covidence.org/> (accessed Oct 12,
409 2020).
- 410 11 UNSD — Methodology. <https://unstats.un.org/unsd/methodology/m49/> (accessed Oct 12, 2020).
- 411 12 UNAIDS Data 2019. 2019; published online July 16.
412 https://www.unaids.org/sites/default/files/media_asset/2019-UNAIDS-data_en.pdf (accessed Oct 12,
413 2020)
- 414 13 Chetty T, Vandormael A, Thorne C, Coutsooudis A. Incident HIV during pregnancy and early
415 postpartum period: a population-based cohort study in a rural area in KwaZulu-Natal, South Africa.
416 *BMC Pregnancy Childbirth* 2017; **17**: 248.
- 417 14 President's Emergency Plan for AIDS Relief. Cameroon Population based HIV Impact Assessment -
418 2017. 2020.
- 419 15 Seri B, Minga A, Gabillard D, *et al.* Twenty-Year Evolution of Hepatitis B Virus and Human
420 Immunodeficiency Virus Prevalence and Incidence in Voluntary Blood Donors in Côte d'Ivoire. *Open*
421 *Forum Infect Dis* 2018; **5**: ofy060.

- 422 16 Kagaayi J, Chang LW, Ssempijja V, *et al.* Impact of combination HIV interventions on HIV incidence
423 in hyperendemic fishing communities in Uganda: a prospective cohort. *Lancet HIV*. 6: e6680-e687
- 424 17 Grabowski MK, Serwadda DM, Gray RH, *et al.* HIV prevention efforts and incidence of HIV in
425 uganda. *N Engl J Med* 2017; **377**: 2154–2166.
- 426 18 Borgdorff MW, Kwaro D, Obor D, *et al.* HIV incidence in western Kenya during scale-up of
427 antiretroviral therapy and voluntary medical male circumcision: a population-based cohort analysis.
428 *Lancet HIV* 2018; **5**: e241–e249.
- 429 19 Hayes RJ, Donnell D, Floyd S, *et al.* Effect of Universal Testing and Treatment on HIV Incidence -
430 HPTN 071 (PopART). *N Engl J Med* 2019; **381**: 207–218.
- 431 20 Tanser F, Barnighausen T, Grapsa E, Zaidi J, Newell ML. High coverage of ART associated with
432 decline in risk of HIV acquisition in rural KwaZulu-Natal, South Africa. *Science* 2013; **339**: 966–971.
- 433 21 Havlir DV, Balzer LB, Charlebois ED, *et al.* HIV Testing and Treatment with the Use of a
434 Community Health Approach in Rural Africa. *N Engl J Med* 2019; **381**: 219–229.
- 435 22 Makhema J, Wirth KE, Pretorius Holme M, *et al.* Universal Testing, Expanded Treatment, and
436 Incidence of HIV Infection in Botswana. *N Engl J Med* 2019; **381**: 230–242.
- 437 23 McClelland RS, Richardson BA, Cherutich P, *et al.* A 15-year study of the impact of community
438 antiretroviral therapy coverage on HIV incidence in Kenyan female sex workers. *AIDS* 2015; **29**:
439 2279–2286.
- 440 24 Dwyer-Lindgren L, Cork MA, Sliagar A, *et al.* Mapping HIV prevalence in sub-Saharan Africa
441 between 2000 and 2017. *Nature* 2019; published online May 15. DOI:10.1038/s41586-019-1200-9.
- 442 25 Tanser F, Barnighausen T, Dobra A, Sartorius B. Identifying “corridors of HIV transmission” in a
443 severely affected rural South African population: a case for a shift toward targeted prevention
444 strategies. *Int J Epidemiol* 2018; **47**: 537–549.
- 445 26 Birdthistle I, Tanton C, Tomita A, *et al.* Recent levels and trends in HIV incidence rates among
446 adolescent girls and young women in ten high-prevalence African countries: a systematic review and
447 meta-analysis. *Lancet Glob Health* 2019; **7**: e1521–e1540.
- 448 27 Adeyeye AO, Stirratt MJ, Burns DN. Engaging men in HIV treatment and prevention. *Lancet* 2018;
449 **392**: 2334–2335.
- 450 28 Baral S, Sifakis F, Cleghorn F, Beyrer C. Elevated risk for HIV infection among men who have sex
451 with men in low- and middle-income countries 2000-2006: a systematic review. *PLoS Med* 2007; **4**:
452 e339.
- 453 29 Baral S, Beyrer C, Muessig K, *et al.* Burden of HIV among female sex workers in low-income and
454 middle-income countries: a systematic review and meta-analysis. *Lancet Infect Dis* 2012; **12**: 538–
455 549.
- 456 30 Abdool Karim Q, Abdool Karim SS. COVID-19 affects HIV and tuberculosis care. *Science* 2020;
457 **369**: 366–368.
- 458 31 Global Fund Survey: Majority of HIV, TB and Malaria Programs Face Disruptions as a Result of
459 COVID-19 - COVID-19 - The Global Fund to Fight AIDS, Tuberculosis and Malaria.

460 [https://www.theglobalfund.org/en/covid-19/news/2020-06-17-global-fund-survey-majority-of-hiv-tb-](https://www.theglobalfund.org/en/covid-19/news/2020-06-17-global-fund-survey-majority-of-hiv-tb-and-malaria-programs-face-disruptions-as-a-result-of-covid-19/)
461 [and-malaria-programs-face-disruptions-as-a-result-of-covid-19/](https://www.theglobalfund.org/en/covid-19/news/2020-06-17-global-fund-survey-majority-of-hiv-tb-and-malaria-programs-face-disruptions-as-a-result-of-covid-19/) (accessed Oct 17, 2020).

462

463

464 **Declaration of interests.**

465

466 We declare no competing interests.

467

468

469 **Acknowledgements**

470 This work was supported by the National Institute of Allergy and Infectious Diseases (K01AI125086 to
471 M.K.G. and R01AI120938 and R01AI128779 to A.A.R.T).

472

473 We thank Dr. Jeff Eaton if his thoughtful comments and advice on this manuscript.

474

475

476

477

478

479

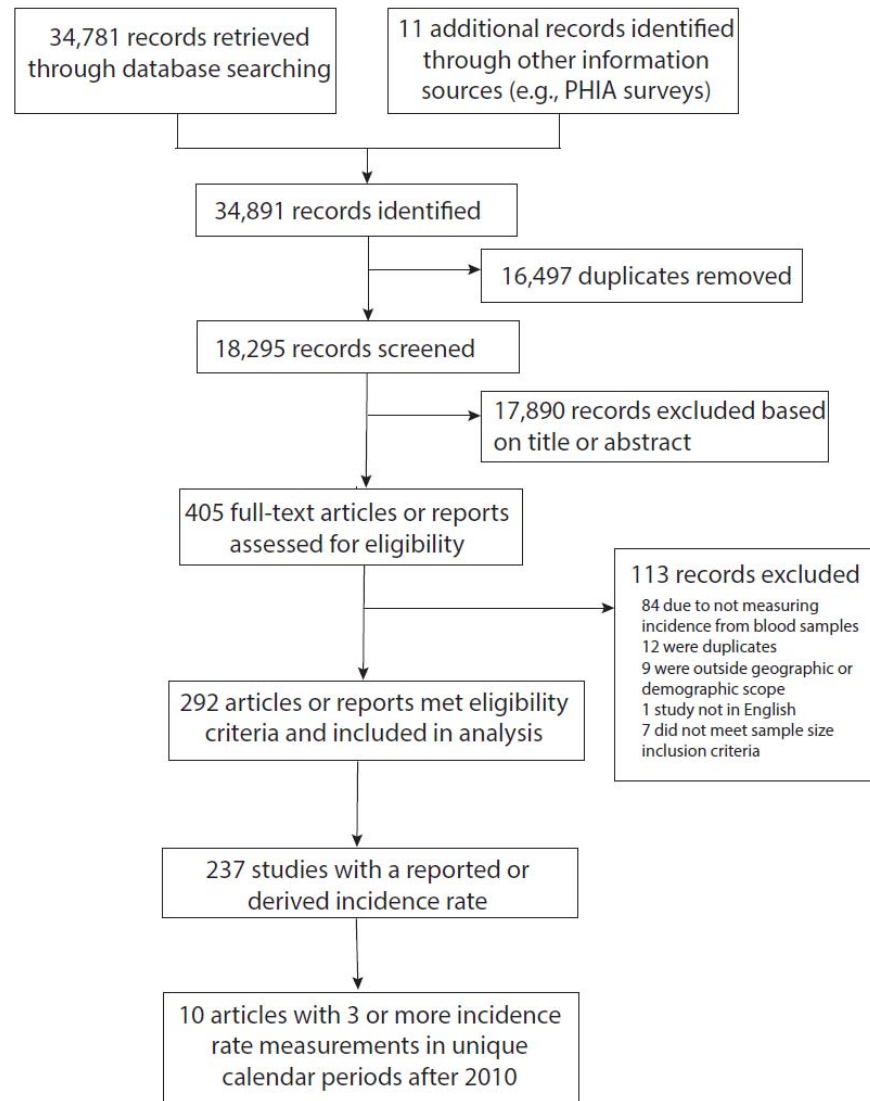
480

481

482

483

484



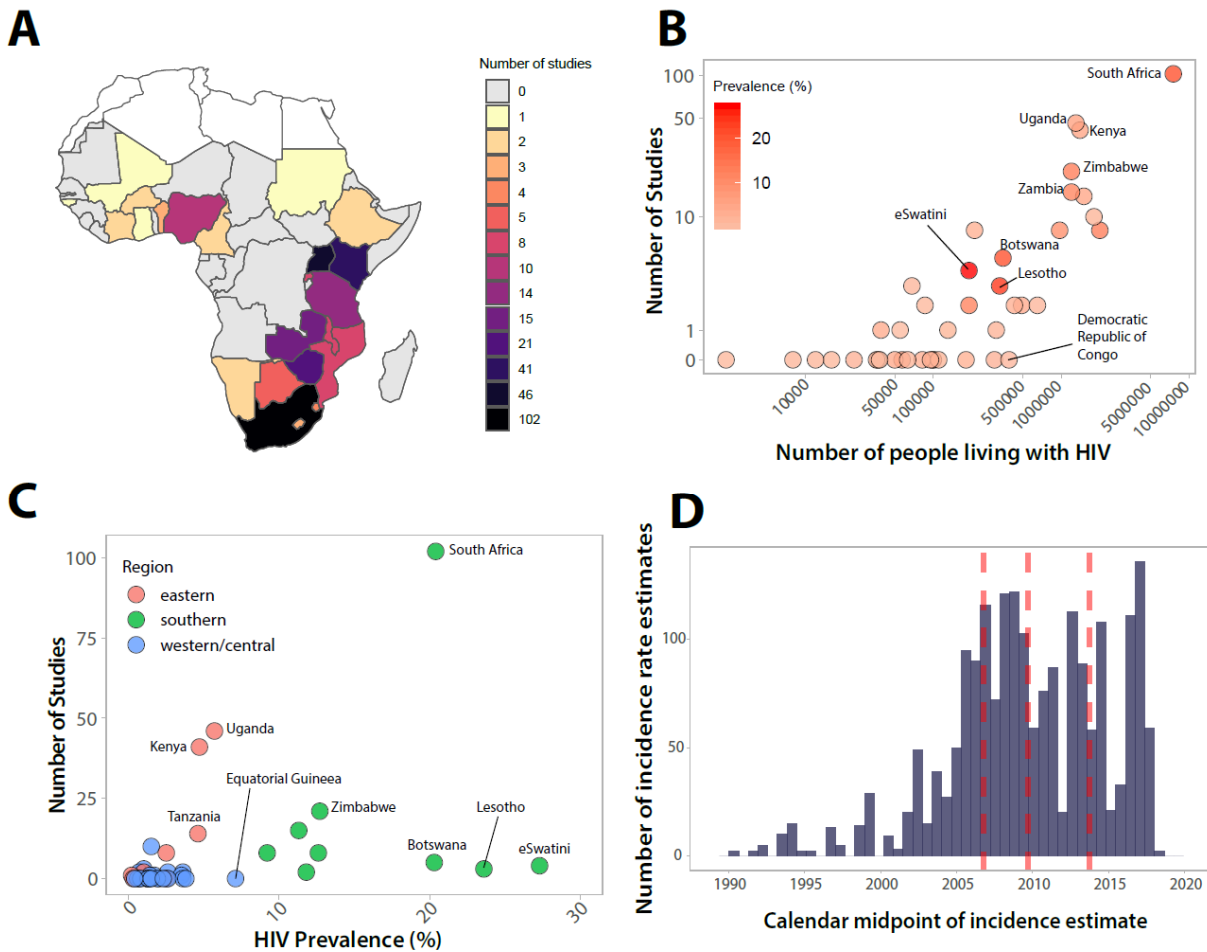
485

486

487 **Figure 1: Flow of papers from literature search to full-text review.** 34,781 papers published between
488 2010-2019 were identified through PubMed, Embase, Scopus, and OVID global health and 11 additional
489 papers were identified through alternative sources including PHIA surveys. 16,497 duplicates were
490 removed using Covidence. Of the 18,295 studies screened, 292 papers met eligibility criteria and were
491 included in the analysis.

492

493
494
495
496

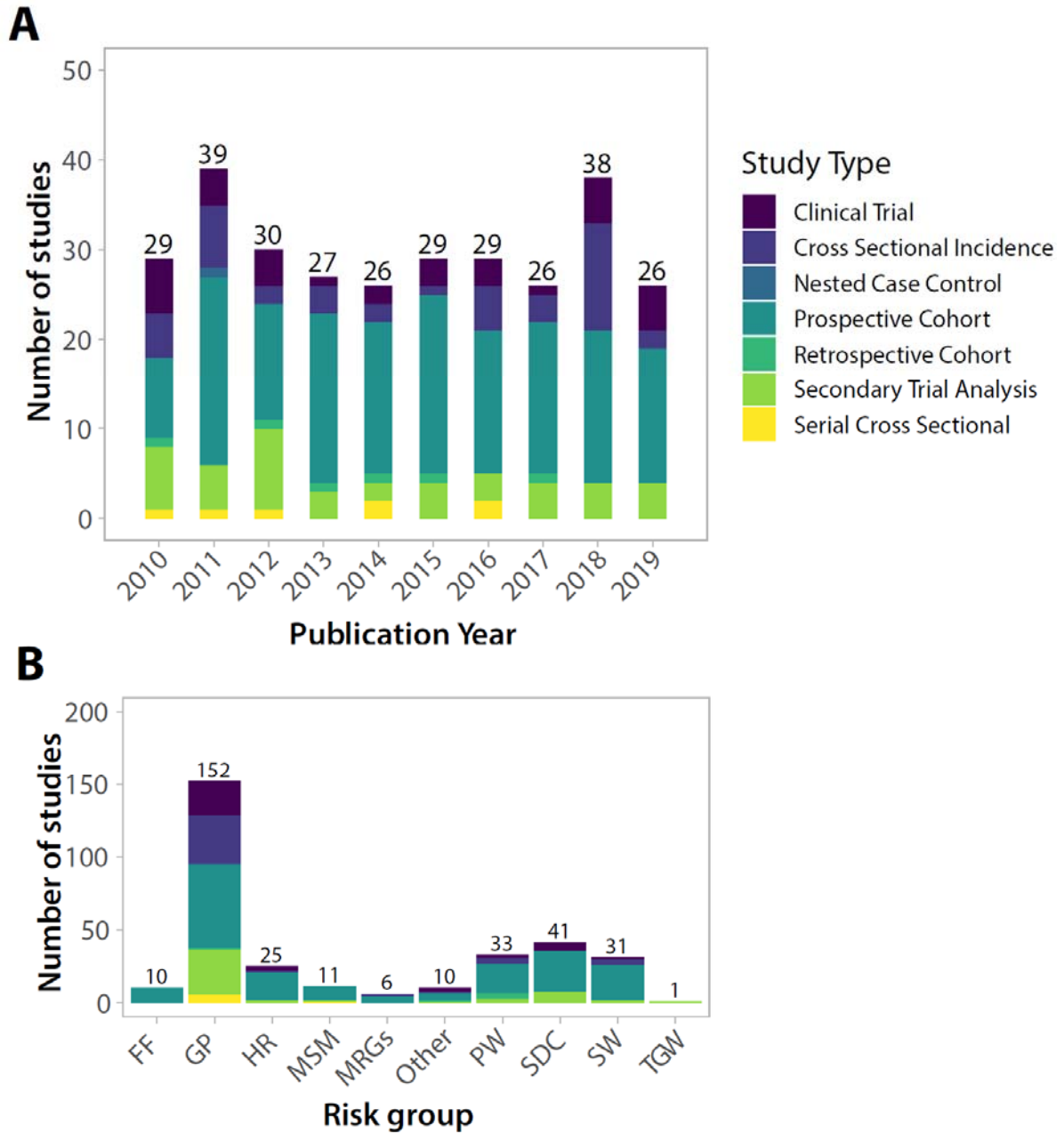


497
498
499

500 **Figure 2: Number of studies reporting empirical HIV incidence data published between 2010-2019**
501 **by location, HIV burden, and study period.** (A). Number of studies by country in sub-Saharan Africa.
502 Studies only reporting incidence data across countries (e.g. South Africa and Zambia combined) were not
503 included. (B) Number of studies by number of people living with HIV. Number of people living with HIV
504 taken as the mean estimated number of adults (15+) living with HIV in 2018 from UNAIDS. (C) Number
505 of studies by HIV prevalence and region. Prevalence taken as the 2018 adult (15-49) prevalence estimate
506 from UNAIDS. (D) Distribution of calendar midpoints for HIV incidence rate estimates. The median and
507 interquartile range of calendar midpoints are shown in red.

508

509



510

511 **Figure 3: Number of studies reporting empirical HIV incidence data by year, and risk group.** (A)
512 Number of studies published by calendar year broken down by study type (B) Number of studies
513 published by risk group broken down by study type. FF=fisherfolk, GP=general population; HR=high risk
514 (e.g., women who report multiple partners); MSM=men who have sex with men; MSRGS=multiple risk
515 groups (e.g., SW and MSM); PW=pregnant women; SDC=serodiscordant couples; SW=sex workers;
516 TGW= transgender women

517

518

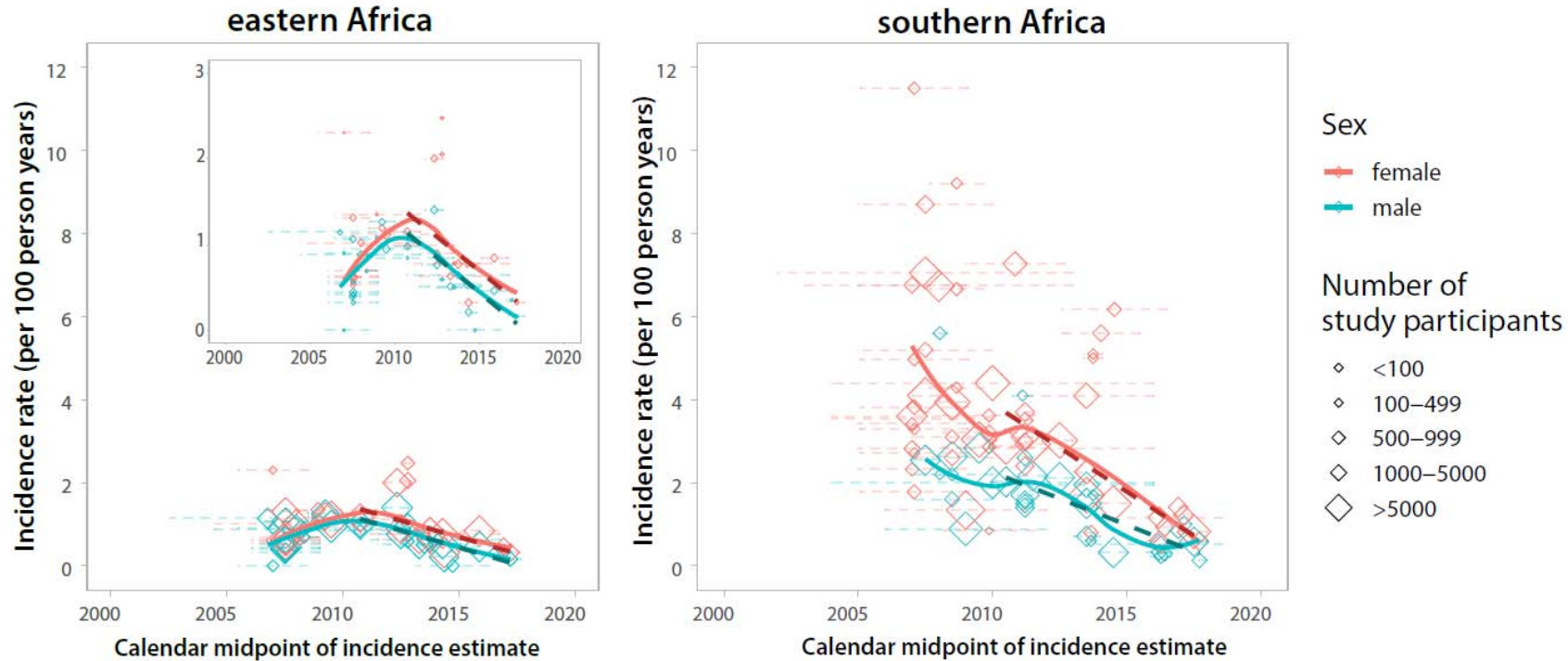


Figure 4: HIV Incidence rates in general population studies over time by sex for eastern and southern Africa. We included incidence rate estimates from general population studies in southern and eastern Africa that had a study mid-point from 2007 onward (this corresponds to the 25th percentile of all calendar mid-points reported, Figure 2D). Diamonds represent the calendar midpoint of the incidence rate estimate while error bars represent the start and end date of the time interval over which the incidence rate was measured. Estimates are only shown for studies with an age range spanning 26 years or greater (e.g. an HIV estimate for individuals 18 to 44 years). Dashed lines show incidence trends fit using linear regression. Solid lines represented smoothed curves fit using loess regression. An inset is included for eastern Africa to highly trends with a y-axis restricted to 3 per 100 person-years.

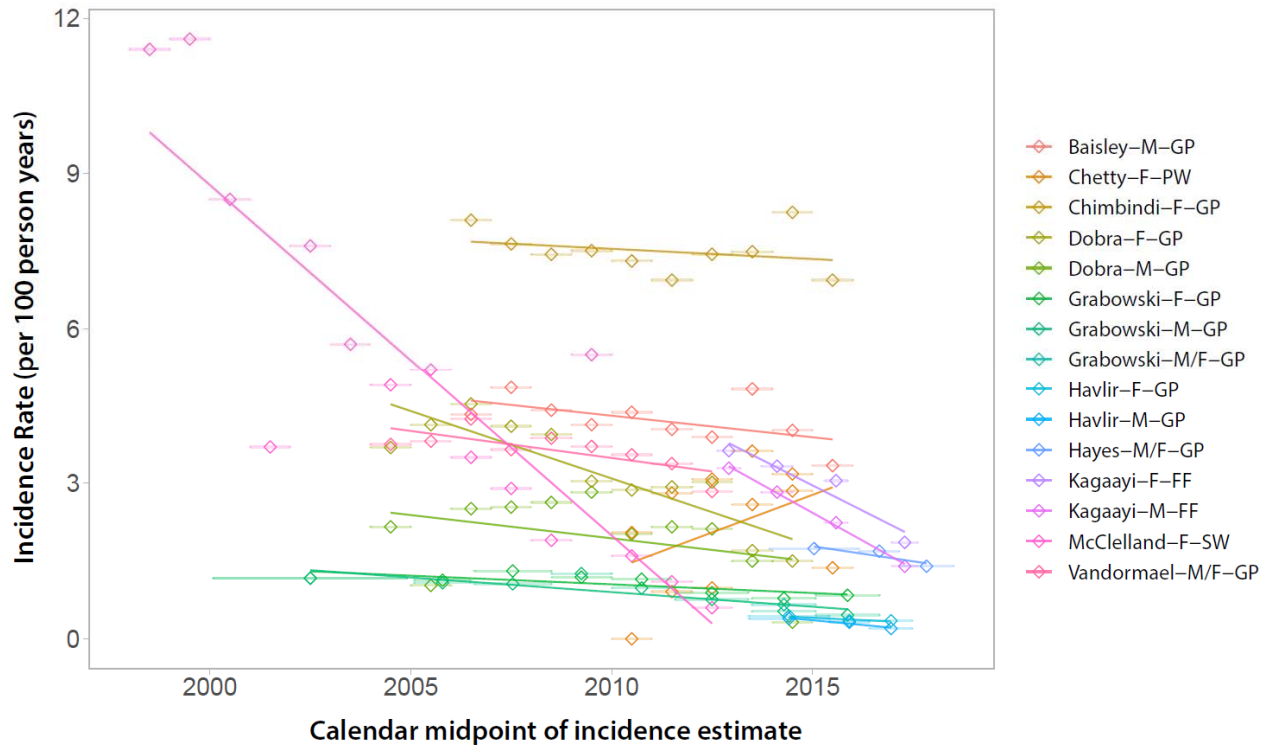


Figure 5: HIV incidence trends from 10 studies with three or more incidence rate measurements after 2010. Data is shown overall and disaggregated by sex where possible. The legend shows the first author, sex (M=male; F=female), and risk group (GP=General population; PW=pregnant women; FF=fisherfolk; SW=sex worker).

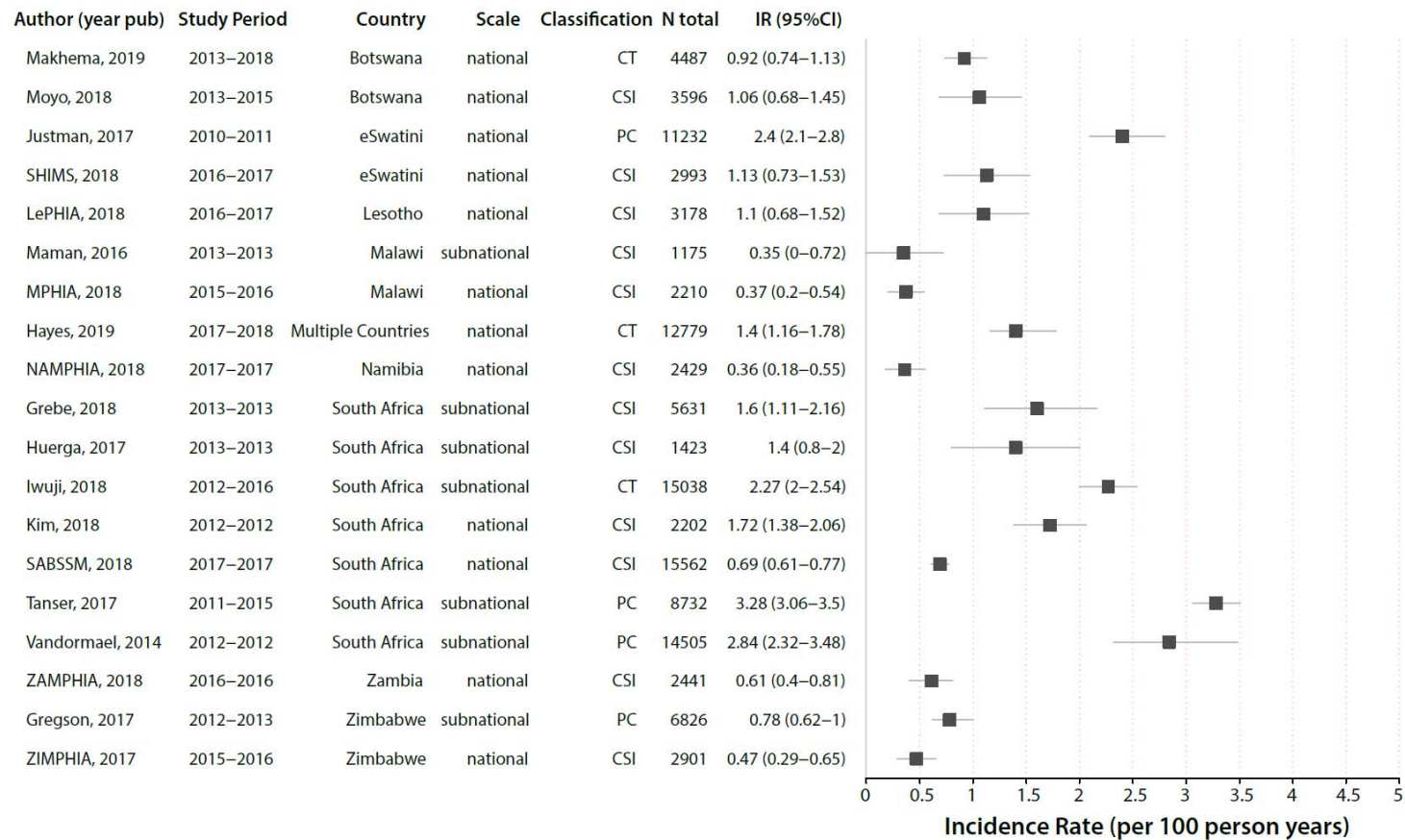


Figure 6. Forest plot of HIV incidence estimates after 2010 for general population studies in southern Africa. Only the most recent HIV incidence estimate for a cohort/study population are shown. Incidence rates are reported as the number of new cases per 100 person-years and the error bars represent 95% CI. Study references are reported in supplemental Table 1. CT=clinical trial; CSI=cross-sectional incidence study; PC=prospective cohort

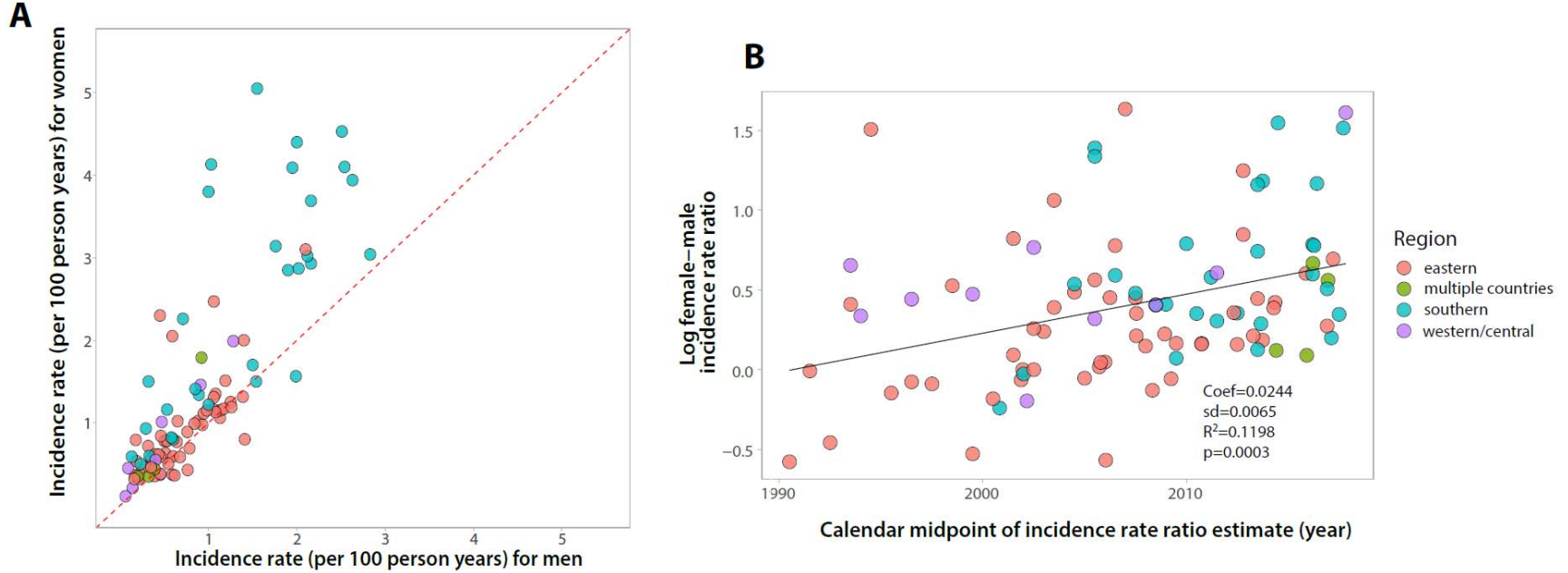


Figure 7. HIV incidence rates among men and women in general population studies. (A) Plot of male vs. female HIV incidence per 100 person-years. Dashed red line is the identify line; points above the line represent higher female HIV incidence while points below the line represent higher male HIV incidence. (B) Scatterplot of the log female-male HIV incidence ratio over calendar time with fitted line (solid black line) estimated using linear regression.