

Effects of photobiomodulation therapy combined with static magnetic field (PBMT-sMF) in patients with severe COVID-19 requiring intubation: a pragmatic randomized placebo-controlled trial

Thiago De Marchi^{1,2}, Fabiano Frâncio^{1,3}, João Vitor Ferlito³, Renata Monteiro Weigert³,
Cristiane Aparecida de Oliveira³, Ana Paula Merlo³, Délcio Luis Pandini³, Bolivar Antônio
Pasqual Júnior³, Daniela Frare Giovanella³, Shaiane Silva Tomazoni^{4,5*},
Ernesto Cesar Pinto Leal-Junior^{2,4,5}

1- University Center of Bento Gonçalves (UNICNEC), Bento Gonçalves, Rio Grande do Sul, Brazil.

2. Laboratory of Phototherapy and Innovative Technologies in Health (LaPIT), Post-graduate Program in Rehabilitation Sciences, Nove de Julho University, São Paulo, Brazil.

3. Hospital Tacchini, Bento Gonçalves, Rio Grande do Sul, Brazil.

4. Physiotherapy Research Group, Department of Global Public Health and Primary Care, University of Bergen, Bergen, Norway.

5. ELJ Consultancy, Scientific Consultants, São Paulo, Brazil.

*Corresponding author:

Shaiane Silva Tomazoni

University of Bergen, Department of Global Public Health and Primary Care. Alrek helseklynge, blokk D, Årstadveien 17, NO-5020, Bergen Norway. e-mail: shaiane.tomazoni@eljconsultancy.com

Trial registration number (Clinical Trials.gov): NCT04386694

Statement of grant support: Multi Radiance Medical (Solon - OH, USA) provided financial support and therapeutic devices for this study. Professor Ernesto Cesar Pinto Leal-Junior

NOTE: This preprint reports new research that has not been certified by peer review and should not be used to guide clinical practice.

receives grant #310281/2017–2 from Brazilian Council of Science and Technology Development (CNPq).

Roles of study sponsor and funders: Multi Radiance Medical (Solon - OH, USA) provided financial support and therapeutic devices for this study. Multi Radiance Medical had no role in the planning, conducting and analysis of data of this randomized controlled trial.

Competing interests: All authors have completed the ICMJE uniform disclosure form at www.icmje.org/coi_disclosure.pdf (Supplement 1) and declare: Professor Ernesto Cesar Pinto Leal-Junior receives research support from Multi Radiance Medical (Solon - OH, USA), a laser device manufacturer. Shaiane Silva Tomazoni has a personal relationship with Ernesto Cesar Pinto Leal-Junior. Both Shaiane Silva Tomazoni and Ernesto Cesar Pinto Leal-Junior had no role in data acquisition, data curation nor data analysis. Multi Radiance Medical had no role in the planning, conducting and analysis of data of this randomized controlled trial. The remaining authors declare that they have no support from any organization for the submitted work; no financial relationships with any organizations that might have an interest in the submitted work in the previous three years; no other relationship or activities that could appear to have influenced the submitted work.

Availability of data and materials: The datasets used and/or analyzed during the current study are available from the corresponding author on reasonable request.

ABSTRACT

Background: Photobiomodulation therapy (PBMT) when used isolated or combined with static magnetic field (PBMT-sMF) has been proven benefits on skeletal muscle increasing performance and reducing fatigue, increasing oxygen saturation, and modulating inflammatory process. However, it is unknown whether the effects observed with this therapy on respiratory muscles will be similar to the effects previously observed on skeletal muscles. **Objective:** We aimed to investigate whether PBMT-sMF is able to decrease the length of stay in the intensive care unit (ICU) and to reduce the mortality rate of patients with severe COVID-19 requiring invasive mechanical ventilation, increasing the respiratory function and modulating the inflammatory process. **Methods:** We conducted a prospectively registered, pragmatic, triple-blinded (patients, therapists and outcome assessors), randomized, placebo-controlled trial of PBMT-sMF in patients with severe COVID-19, requiring invasive mechanical ventilation, admitted to the ICU. Patients were randomly assigned to receive either PBMT-sMF (6 sites at the lower thorax – 189 J total, and 2 sites at the neck area – 63 J total) or placebo PBMT-sMF daily during all the ICU stay. The primary outcome was length of stay in the ICU defined by either discharge or death. The secondary outcomes were survival rate, muscle function of diaphragm, change in blood tests, change in mechanical ventilation parameters and change in arterial blood gas analysis. **Results:** A total of 30 patients underwent randomization (with 15 assigned to PBMT-sMF and 15 to placebo) and were analyzed. The length of stay in the ICU for the placebo group was 23.06 days while for the PBMT-sMF group was 16.26. However, there was no statistically difference between groups for the length of stay in the ICU (mean difference - MD = - 6.80; 95% CI = - 18.71 to 5.11). Regarding the secondary outcomes were observed statistically differences in favor of PBMT-sMF for diaphragm thickness, fraction of inspired oxygen, partial pressure of oxygen/fraction of inspired oxygen ratio, C-reactive protein, lymphocytes count, and hemoglobin ($p < 0.05$). **Conclusion:** Among patients with severe COVID-19 requiring invasive mechanical ventilation, PBMT-sMF was not statistically different than placebo to the length of stay in the ICU. However, it is important to highlight that our sample size was underpowered to detect statistical differences to the primary outcome. In contrast, PBMT-sMF increased muscle function of diaphragm, improved ventilatory parameters, decreased C-reactive protein levels and hemoglobin count, and increased lymphocytes count. **Trial registration number (Clinical Trials.gov):** NCT04386694.

INTRODUCTION

The novel Coronavirus disease 2019 (COVID-19) is caused by severe acute respiratory syndrome coronavirus 2 (SARS-CoV-2).¹ SARS-CoV-2 infection trigger some blood changes such as leucopenia, lymphopenia, increased prothrombin time, d-dimer and c-reactive protein (PCR) levels, and increased cytokine levels such as 1L-1 β and TNF- α .^{2,3,4} The main clinical features observed in patients with COVID-19 are fever, dry cough, and fatigue or myalgia;^{2,5} and can range from no symptoms to severe pneumonia and death.¹ Patients with high degree of severity usually may progress to complications such as dyspnea, hypoxia, acute hypoxaemic respiratory insufficiency, arrhythmia, acute cardiac injury, and shock.^{2,5,6} These complications may require critical care in an intensive care unit (ICU).^{2,5,7}

To date, there is no effective treatment against SARS-CoV-2 infection; therefore, several therapeutic agents such as chloroquine, hydroxychloroquine,⁸ lopinavir-ritonavir,⁹ remdesevir,¹⁰ and dexamethasone,¹¹ often used to treat other medical conditions, have been tested and used in an attempt to face the COVID-19. The effectiveness of these therapeutic agents is still conflicting⁸⁻¹⁰ and further high quality randomized controlled trials are necessary to confirm whether the benefits outweigh the harms. However, since there is no robust evidence about the effects of the available therapeutic agents and there is no effective treatment available to combat the SARS-CoV-2, it has been necessary to use management strategies of signs and symptoms in patients with COVID-19, especially in the most severe cases. The respiratory management of patients with severe COVID-19 in ICUs can be done through oxygen therapy, non-invasive ventilation and intubation.¹² Respiratory failure due to hypoxemia is one of the most prominent complications in these patients¹³ and usually requires mechanical ventilation via an endotracheal tube.¹⁴ Acute respiratory failure reduces lung compliance, increases respiratory work and alters blood oxygenation, leading to a shallow breathing pattern.¹⁵ In addition, the strength of the respiratory muscles may also be reduced,¹⁶ which makes it difficult to successfully wean patients from mechanical ventilation, besides to contributing to a poorer clinical trajectory.^{17,18}

Photobiomodulation therapy (PBMT) combined with static magnetic field (sMF) has potential to be a promising non-pharmacological tool in the respiratory management of patients with severe COVID-19. PBMT is a non-thermal and non-ionizing light therapy applied in the form of light amplification by the stimulated emission of radiation (LASER), light-emitting diodes (LEDs), and/or broadband irradiation in the visible and infrared spectra.¹⁹ PBMT increases cellular metabolism^{20,21} and microcirculation,²² oxygen availability,^{23,24} redox

metabolism²⁵ and modulates the inflammatory process.²⁶⁻²⁸ PBMT has been used in combination with a static magnetic field (sMF),²⁷⁻³⁰ generating better effects on cell metabolism.³¹ Robust evidence has shown that PBMT isolated or combined with sMF (PBMT-sMF) has beneficial effects on skeletal muscle, increasing performance and reducing fatigue,^{32,33} decreasing performance loss and function in detraining period,³⁰ and increasing oxygen saturation.^{23,24} In contrast, there is a lack of evidence about the effects of PBMT or PBMT-sMF on respiratory muscles and respiratory system in general. To date, there is only one clinical trial that irradiated PBMT in respiratory muscles of the thorax and neck area.³⁴ This study showed the effectiveness of PBMT in improving the functional capacity of patients with chronic obstructive pulmonary disease.³⁴ Furthermore, experimental studies on respiratory system of animals observed that PBMT is able to modulate the pulmonary inflammation³⁵⁻³⁷ and relieve bronchial hyperresponsiveness.³⁷

The beneficial effects previously showed added to the lack of adverse effects known to date, suggest that PBMT-sMF could be a safer alternative to the use of drugs in the treatment of patients with severe COVID-19. However, it is unknown whether the effects observed with PBMT (isolated or PBMT-sMF) on respiratory muscles will be similar to the effects previously observed on skeletal muscles. In addition, it is unknown whether PBMT-sMF can modulate the inflammatory process in this particular disease and contribute to a clinical improvement of these patients. Thus, it is necessary to investigate whether PBMT-sMF is able to decrease muscle fatigue of respiratory muscles and loss of respiratory function, besides of increasing oxygen saturation, modulating the inflammatory process and, consequently, contributing to general improvement of patients with severe COVID-19. In addition, it is necessary to investigate whether these possible benefits of PBMT-sMF can contribute to accelerate the weaning process of mechanical ventilation and to decrease the length of stay in the ICU of patients with severe COVID-19. Therefore, we aimed to investigate whether PBMT-sMF is able to decrease the length of stay in the ICU and to reduce the mortality rate of patients with severe COVID-19 requiring invasive mechanical ventilation, increasing the respiratory function and modulating the inflammatory process.

METHODS

Trial design

A prospectively registered (NCT04386694), pragmatic, two-arms, parallel randomized, triple-blinded (patients, therapists and outcome assessors), placebo-controlled trial was

conducted. This study adheres to CONSORT guidelines (Supplement 2) There were two deviations from the registered protocol. The first one was due our estimation that the endpoint assessment would be up to 20 days after randomization, because the patients would be discharged or dead from any cause within this period. However, as the endpoint assessment directly depended on the length of stay in the ICU, it could take more than 20 days. The second deviation was regarding the assessment of three secondary outcomes: immunoglobulin G (IgG), immunoglobulin M (IgM), and D-dimer. These secondary outcomes were not assessed because the third part laboratory in charge to carry out the blood analysis was not able to implement the necessary routines before the beginning of this trial.

Ethics

This study was submitted and approved by the Research Ethics Committee of Associação Dr. Bartholomeu Tacchini/Hospital Tacchini/RS, under protocol number 3,985,226, and by the National Research Ethics Commission from Brazilian Ministry of Health (protocol number 4,021,485). All patients eligible for the study or patient's legal representative (if the patient was too unwell to provide consent) were informed by study assessors of the objective and all signed the written informed consent before enrollment in the study. Research personnel were taken all appropriate and customary steps to ensure that data remained secure and that patient privacy and confidentiality was maintained.

Participants and recruitment

Participants were patients with laboratory-confirmed COVID-19 through RT-PCR (reverse transcription-polymerase chain reaction), admitted to the adult ICU of the Hospital Tachhini, Bento Gonçalves, Brazil, between May 2020 and July 2020. To be eligible, patients had to have 15 years or older; requiring invasive mechanical ventilation, through orotracheal intubation, due to respiratory failure. Patients who had a negative result in the diagnostic examination for COVID-19 and patients in prone position for more than 24 hours were excluded. Moreover, cancer patients and pregnant women were also excluded.

Randomization and blinding

Prior to initiation of the treatment, patients were randomized into their respective intervention groups: active PBMT-sMF or placebo PBMT-sMF. The randomization was generated by a website (<http://randomization.com/>) and performed by a participating researcher not involved with the recruitment, assessment or treatment of patients. This same researcher

was responsible for programming the PBMT-sMF device according to the result of the randomization, as active or placebo mode. This researcher was instructed not to disclose the programmed intervention to the assessor, therapist or any of the patients and other researchers involved in the study until its completion. The assessors, patients and therapists were blinded throughout the treatment. Concealed allocation was achieved through the use of sequentially numbered, sealed and opaque envelopes.

Interventions

Patients were randomly allocated to two groups to be submitted to the active PBMT-sMF or placebo PBMT-sMF interventions. All patients, regardless of the allocated group, received standard ICU care associated with the tested intervention (active or placebo PBMT-sMF). The active and placebo PBMT-sMF were performed using the same device and the irradiated sites were the same to both therapies (Figure 1). To ensure blinding for therapists the device emitted the same sounds and the same information on the display regardless of the programmed mode (active or placebo). Furthermore, since this technology produces an undiscernible amount of heat,²⁹ the blindness was not compromised by this aspect.

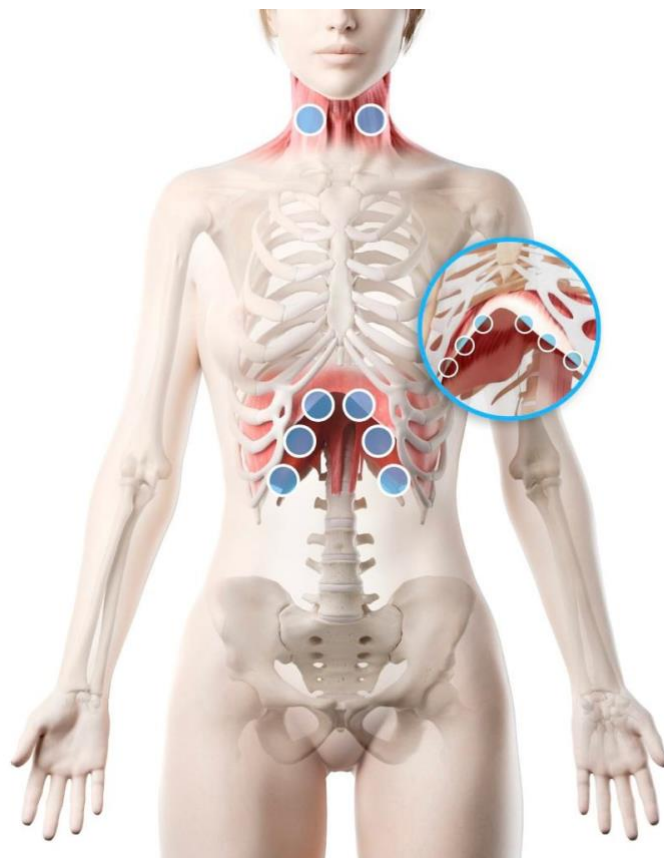


Figure 1. Sites of PBMT-sMF irradiation.

Patients underwent the treatment (active PBMT-sMF or placebo PBMT-sMF) according to prior randomization, once a day, during all the ICU stay (after inclusion in the study), until discharge or death. Specifications of the intervention:

1) Photobiomodulation therapy (PBMT) combined with static magnetic field (sMF) (PBMT-sMF) - active: PBMT-sMF was performed employing a cordless, portable MR5 Activ Pro LaserShower™ device (PhotOxyl™ prototype, manufactured by Multi Radiance Medical™, Solon - OH, USA). PBMT-sMF was irradiated in six sites at the lower thorax/ upper abdominal cavity and two sites at the neck area (sternocleidomastoid muscle), as illustrated in figure 1. PBMT-sMF exposure time was 60 seconds per site. The dose used in the lower thorax was 31.50 J per site, totalizing a dose of 189 J. In addition, the dose used in the neck area was 31.50 J per site, totalizing a dose of 63 J. PBMT-sMF dose per site, and the irradiation sites were established based on the only one previous study that have irradiated respiratory muscles.³⁴ PBMT-sMF was applied using the direct contact method with slight pressure on the skin. The full description of parameters is provided in table 1.

Table 1. PBMT-sMF parameters

	Diaphragm	Sternocleidomastoid / Scalene
Number of lasers	4	4
Wavelength (nm)	905	905
Frequency (Hz)	250	250
Peak power (W) - each	50	50
Average mean optical output (mW) - each	1.25	1.25
Power density (mW/cm ²) - each	3.91	3.91
Energy density (J/ cm ²) - each	0.234	0.234
Dose (J) - each	0.075	0.075
Spot size of laser (cm ²) - each	0.32	0.32
Number of red LEDs	8	8
Wavelength of red LEDs (nm)	633	633
Frequency (Hz)	2	2
Average optical output (mW) - each	25	25
Power density (mW/cm ²) - each	29.41	29.41
Energy density (J/ cm ²) - each	1.765	1.765
Dose (J) - each	1.50	1.50
Spot size of red LED (cm ²) - each	0.85	0.85
Number of infrared LEDs	8	8
Wavelength of infrared LEDs (nm)	850	850
Frequency (Hz)	250	250
Average optical output (mW) - each	40	40

Power density (mW/cm ²) - each	71.23	71.23
Energy density (J/ cm ²) - each	4.286	4.286
Dose (J) - each	2.40	2.40
Spot size of infrared LED (cm ²) - each	0.56	0.56
Magnetic field (mT)	110	110
Irradiation time per site (sec)	60	60
Total dose per site (J)	31.50	31.50
Number of irradiated sites	6	1 (bilaterally)
Total dose delivered to the muscle group (J)	189.00	31.50 (bilaterally)
Aperture of device (cm ²)	33	33
Application mode	Cluster probe held stationary in skin contact with a 90-degree angle and slight pressure	Cluster probe held stationary in skin contact with a 90-degree angle and slight pressure

2) Photobiomodulation therapy (PBMT) combined with static magnetic field (sMF) (PBMT-sMF) – placebo: The placebo intervention was delivered using the same device than active PBMT-sMF but without any emission of therapeutic dose. In the placebo mode, the infrared laser diodes, the infrared LED diodes, and the sMF were deactivated (turned off), and the power of the red LED diodes were decreased to 0.5 mW (mean power for each diode) in order to keep the visual aspect of red light, but not to deliver an effective therapeutic or considerable dose (0.24 J to each site) according the current available evidence.^{19,33} Moreover, the irradiated sites and the exposure time were the same that active PBMT-sMF.

Outcomes

Demographic and clinical characteristics (e.g., age, gender, and comorbidities) were collected directly from electronic medical record of each patient. The primary and secondary outcomes were:

Primary outcome

- Length of stay in the ICU: the length of stay in the ICU was measured by the number of days that patients were maintained hospitalized in the ICU from randomization until discharge or death from any cause, whichever came first.

Secondary outcomes

- Survival rate: survival rate was measured by the rate of how many people survived and were discharged from ICU versus how many people have died, from randomization until discharge or death from any cause, whichever came first.
- Muscle function of diaphragm: the muscle function of the diaphragm was assessed through the thickness of diaphragm measured by ultrasound.^{38,39} The LOGIQe device (GE Healthcare, Chicago, USA) was used, with a linear transducer (ML6-15 from 5 to 15 MHz and 9L 2-8 MHz). The measurement was performed with the patient in the supine position. The transducer was positioned in the zone of apposition between the anterior and midaxillary lines at the level of the 9th or 10th intercostal space.³⁹ End-expiratory thickness of diaphragm was measured in 2 consecutive breaths from 2 separate images. Measurements were repeated at least once until consistently within 10%; the mean of all 4 measurement was used for analysis.³⁹ The measurement was obtained at baseline (up to 24 hours after the initiation of invasive mechanical ventilation), 10 days after randomization and in the last test before discharge or death from any cause, whichever came first (within 24 hours).
- Change in blood tests: the change in C-reactive protein (CRP), tumor necrosis factor-alpha (TNF- α), and vitamin D levels, besides change in erythrocytes, hemoglobin, hematocrit, leucocytes, segmented neutrals, eosinophiles, basophiles, lymphocytes, monocytes, and platelet count were assessed at baseline (admission to the ICU), 10 days after randomization and in the last test/day before discharge or death from any cause, whichever came first. The data regarding the blood tests were collected directly from electronic medical record of each patient, since it is a hospital daily routine to perform these blood tests. The data were collected by two assessors blinded to the allocation group of the patients.
- Change in mechanical ventilation parameters: the change in positive end-expiratory pressure levels (PEEP) and fraction of inspired oxygen (FiO₂) were measured using a mechanical ventilator. The data was collected directly from the mechanical ventilator at baseline (admission to the ICU), 10 days after randomization and in the last day before discharge or death from any cause, whichever came first.
- Change in arterial blood gas analysis: the change in arterial partial pressure of oxygen (PO₂) and PO₂/FiO₂ ratio were assessed at baseline (admission to the ICU), 10 days after randomization and in the last test/day before discharge or death from any cause, whichever came first. The data regarding the arterial blood gas analysis were collected

directly from electronic medical record of each patient, since it is a hospital daily routine to perform these blood tests. The data were collected by two assessors blinded to the allocation group of the patients.

Statistical analysis

Since to date there is not published studies aiming to assess the effects of PBMT-sMF in patients with severe COVID-19, we were compelled to use a convenience sample for this trial. To estimate our sample, we based on the number of patients that would fulfill our inclusion/exclusion criteria admitted in the ICU of Hospital Tacchini at the month before we start our trial (April 2020), which was 10 patients. Thus, estimating a 3-month length for the inclusion of patients in our trial (after the randomization of the first patient) we expected to reach the convenience sample of 30 patients in total.

The statistical analysis was conducted following intention-to-treat principles (i.e., the participants were analyzed in the groups to which they were allocated).^{40,41} Data normality was tested by Kolmogorov-Smirnov test. Since the data showed normal distribution, the between-group differences (effects of treatment) were analyzed by unpaired, two tailed, t tests (hospitalization data), and two-way repeated measures analysis of variance (time vs experimental group) with post hoc Bonferroni correction (ventilatory parameters, biochemical markers and hemogram parameters). The association between categorical variables was analyzed using the Chi-square test. Data were expressed as mean and standard deviation, mean difference between treatments, and 95% confidence intervals (95% CIs). Data were also expressed as frequency (%). The significance level was set at $p < 0.05$. The magnitude of differences (Cohen-d) between groups, to examine practical significances, was calculated using the mean and SD of placebo and PBMT-sMF treatments (using Gpower 3.1). We adopted the criteria of Cohen for the analysis (0.2: small; 0.50: moderate; 0.80: large). All analyses were calculated by one of the researchers who was not involved in data collection.

RESULTS

Patients

Of the 62 patients who were assessed for eligibility, 30 were included in the study and underwent randomization; 15 were assigned to the placebo group and 15 were assigned to the PBMT-sMF. All patients received the treatment as assigned (figure 2). The mean age of the patients was 66.06 years, the mean height was 166.53 cm, the mean body mass was 75.18 kg,

and 53.33% of patients were male. The demographic and clinical characteristics of patients at baseline were similar ($p>0.05$) in both groups and are described in Table 2. There were no adverse effects observed in both groups.

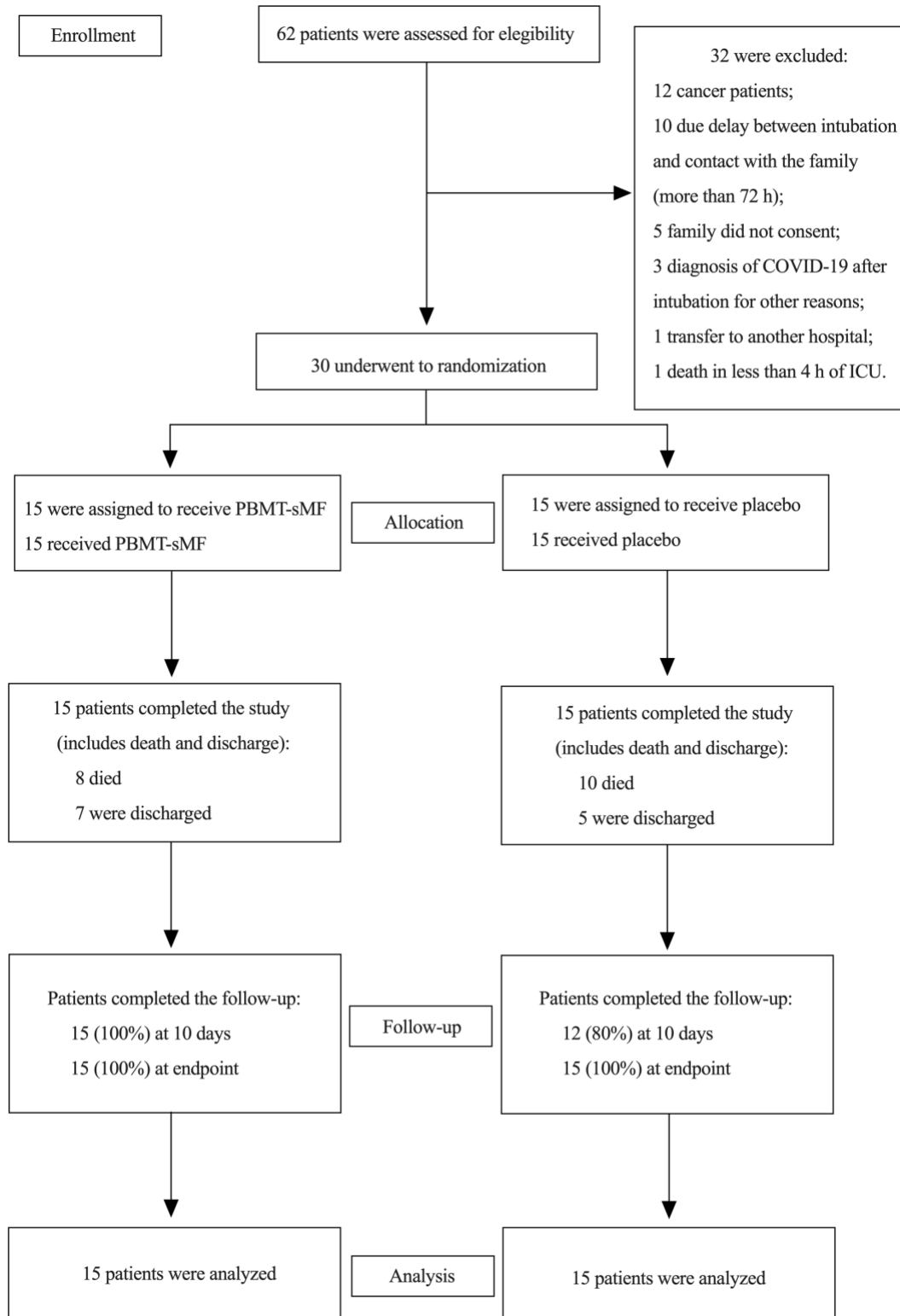


Figure 2. Enrollment and randomization.

Table 2. Demographic and clinical characteristics of the patients at baseline

	Placebo (n = 15)	PBMT-sMF (n = 15)
Age (years)	67.93 (11.68)	64.2 (18.67)
Gender (%)		
Female	8	6
Male	6	8
Body mass (Kg)	77.96 (18.49)	72.40 (16.94)
Height (cm)	165.06 (11.57)	168 (7.98)
Comorbidities (%)		
Hypertension	9 (60.0)	5 (33.3)
Diabetes	8 (53.3)	4 (26.7)
Obesity	4 (26.7)	3 (20.0)
Dementia	3 (20.0)	2 (13.3)
Depression	2 (13.3)	0 (0.00)

Categorical variables are expressed as number (%). Continuous variables are expressed as mean (SD). PBMT-sMF: photobiomodulation therapy combined with static magnetic field.

Primary outcome

The length of stay in the ICU for the placebo group was 23.06 days while for the PBMT-sMF group was 16.26 days. However, there was no statistically difference between groups for the length of stay in the ICU (mean difference – MD = - 6.80; 95% CI = - 18.71 to 5.11) (table 3).

Table 3. Hospitalization outcomes

	Placebo	PBMT-sMF	Between groups comparisons	Mean difference [95% CI]	Effect size Cohen d
Length of stay in ICU (Days)	Total (n=15): 23.06 (± 20.37) Non-survivors (n=10): 20.4 (± 20.58) Survivors (n=5): 28.4 (± 21.12)	Total (n=15): 16.26 (± 9.61) Non-survivors (n=8): 18.65 (± 9.88) Survivors (n=7): 13.57 (± 9.25)	Total: p=0.25 Non-survivors: p=0.82 Survivors: p=0.12	Total: - 6.80 [-18.71 to 5.11] Non-survivors: -1.75 [-18.6 to 15.1] Survivors: -14.83 [-34.61 to 4.94]	Total: 0.4 (small) Non-survivors: 0.1 (small) Survivors: 0.9 (large)
Hospitalization length (Days)	Total (n=15): 24.33 (± 20.24) Non-survivors (n=10): 20.40 (± 20.58) Survivors (n=5): 32.20 (± 19.09)	Total (n=15): 18.33 (± 8.95) Non-survivors (n=8): 18.75 (± 10.08) Survivors (n=7): 17.85 (± 8.17)	Total: p=0.30 Non-survivors: p=0.83 Survivors: p=0.10	Total: -6.0 [-17.7 to 5.69] Non-survivors: -1.65 [-18.56 to 15.26] Survivors: -14.35 [-32.13 to 3.43]	Total: 0.4 (small) Non-survivors: 0.1 (small) Survivors: 0.9 (large)
Deaths / Discharges	10 / 5	8 / 7	p=0.46	-----	-----

Continuous variables are expressed as mean (SD). Categorical variables are expressed as number. PBMT-sMF: photobiomodulation therapy combined with static magnetic field; ICU: intensive care unit.

Secondary outcomes

Patients allocated to the PBMT-sMF group increased diaphragm thickness at the assessment performed at day 10 (MD = 14.19; 95% CI = 2.50 to 25.87) and at endpoint assessment (MD = 20.46; 95% CI = 8.77 to 32.14) compared to patients allocated to the placebo group (table 4). Regarding the ventilatory parameters, there was no statistically difference between groups for PEEP and PO₂ at any time point (table 4). In addition, there was no statistically difference between groups for FiO₂ at assessment of day 10. However, PBMT-sMF group was able to decrease the FiO₂ at endpoint assessment (MD = - 23.93; 95% CI = - 47.52 to - 0.34) compared to placebo group (table 4). Finally, patients allocated to the PBMT-sMF group increased PO₂/FiO₂ only at endpoint assessment (MD = 117.90; 95% CI = 12.31 to 223.50) compared to the placebo group (table 4).

Table 4. Ventilatory parameters

	Placebo (n = 15)			PBMT-sMF (n = 15)			Placebo vs PBMT-sMF		
	Baseline	Day 10	Endpoint	Baseline	Day 10	Endpoint	Between groups comparisons	Mean difference [95% CI]	Effect size Cohen d
Thickness fraction diaphragm (%)	25.28 (± 12.85)	22.90 (± 7.58)	23.76 (± 13.15)	29.55 (± 13.56)	37.09 (± 17.02)	44.22 (± 12.59)**	Baseline: p=0.99 Day 10: p=0.0117 Endpoint: p=0.0001	Baseline: 4.27 [-7.41 to 15.95] Day 10: 14.19 [2.50 to 25.87] Endpoint: 20.46 [8.77 to 32.14]	Day 10: 1.1 (large) Endpoint: 1.6 (large)
PEEP (cmH ₂ O)	9.13 (± 2.64)	8.93 (± 2.46)	8.20 (± 4.09)	9.00 (± 1.96)	7.53 (± 2.82)	6.60 (± 2.82)	Baseline: p=0.99 Day 10: p=0.5540 Endpoint: p=0.3931	Baseline: -0.13 [-2.69 to 2.43] Day 10: -1.40 [-3.96 to 1.16] Endpoint: -1.60 [- 4.16 to 0.96]	Day 10: 0.5 (moderate) Endpoint: 0.5 (moderate)
PO ₂ (mmHg)	91.46 (± 20.78)	99.74 (± 29.93)	92.74 (± 28.00)	108.22 (± 29.68)	106.46 (± 33.98)	109.29 (± 26.16)	Baseline: p=0.99 Day 10: p=0.99 Endpoint: p=0.34	Baseline: 16.76 [-8.64 to 42.16] Day 10: 6.72 [-18.68 to 32.12] Endpoint: 16.55 [-8.85 to 41.95]	Day 10: 0.2 (small) Endpoint: 0.6 (moderate)
FiO ₂ (%)	69.66 (± 21.91)	63.20 (± 26.72)	75.46 (± 31.59)	62.33 (± 21.03)	51.26 (± 26.07)	51.53 (± 29.68)	Baseline: p= 0.33 Day 10: p=0.6590 Endpoint: p=0.0456	Baseline: -7.33 [-30.92 to 16.26] Day 10: -11.94 [- 35.53 to 11.65] Endpoint:- 23.93 [-47.52 to -0.34]	Day 10: 0.5 (moderate) Endpoint: 0.8 (large)
PO ₂ / FiO ₂ (mmHg)	146.71 (± 61.85)	183.32 (± 81.85)	158.26 (± 102.37)	199.65 (± 109.82)	261.28 (± 156.21)	276.15 (± 163.07)	Baseline: p=0.67 Day 10: p=0.2246 Endpoint: p=0.0233	Baseline: 52.94 [-53.63 to 158.50] Day 10: 77.95 [-27.63 to 183.5] Endpoint: 117.90 [12.31 to 223.50]	Day 10: 0.6 (moderate) Endpoint: 0.9 (large)

** Intragroup difference (PBMT-sMF) compared to the baseline (p<0.01). Continuous variables are expressed as mean (SD). PBMT-sMF: photobiomodulation therapy combined with static magnetic field.

Patients allocated to the PBMT-sMF group decreased the CRP levels (MD = - 83.87; 95% CI = - 166.50 to - 1.28) and increased the lymphocytes count (MD = 1160.00; 95% CI = 197.90 to 2122.00) only at endpoint assessment compared to placebo group (table 5). In addition, patients allocated to the PBMT-sMF group decreased the hemoglobin count (MD = - 1.97; 95% CI = - 3.77 to - 0.17) at assessment of day 10 compared to placebo group (table 5). Finally, there were no statistically significant differences between the groups for any other secondary outcomes at any time point.

Table 5 - Biochemical markers and hemogram parameters

	Placebo (n = 15)			PBMT-sMF (n = 15)			Between groups comparisons	Mean difference [95% CI]	Effect size Cohen d
	Baseline	Day 10	Endpoint	Baseline	Day 10	Endpoint			
CRP (mg/dL)	201.30 (± 65.39)	118.79 (± 71.00)	156.53 (± 124.49)	152.29 (± 108.88)	98.70 (± 95.24)	72.66 (± 75.40)	Baseline: p=0.41 Day 10: p=0.99 Endpoint: p=0.045	Baseline: - 49.01 [-131.60 to 33.58] Day 10: -20.09 [-102.70 to 62.50] Endpoint: -83.87 [-166.50 to -1.28]	Day 10: 0.2 (small) Endpoint: 0.8 (large)
TNF-alpha (pg/mL)	17.23 (± 13.46)	12.28 (± 5.42)	17.05 (± 7.54)	19.71 (± 17.51)	18.40 (± 13.43)	14.19 (± 5.44)	Baseline: p=0.99 Day 10: p=0.44 Endpoint: p=0.99	Baseline: 2.48 [-7.71 to 12.68] Day 10: 6.11 [-4.08 to 16.32] Endpoint: - 2.87 [-13.07 to 7.33]	Day 10: 0.5 (moderate) Endpoint: 0.4 (small)
Vitamin D (ng/mL)	14.88 (± 5.13)	18.28 (± 9.95)	14.16 (± 4.80)	19.04 (± 10.83)	17.85 (± 6.67)	21.07 (± 7.07)	Baseline: p=0.43 Day 10: p=0.99 Endpoint: p=0.0502	Baseline: 4.15 [-2.75 to 11.07] Day 10: -0.42 [-7.34 to 6.48] Endpoint: 6.90 [-0.004 to 13.82]	Day 10: 0.1 (small) Endpoint: 1.1 (large)
Erythrocytes (millions/mm ³)	4.20 (± 0.58)	3.73 (± 0.55)	3.40 (± 0.54) ^{##}	3.75 (± 0.64)	3.18 (± 0.59)	3.04 (± 0.90) ^{**}	Baseline: p=0.19 Day 10: p=0.065 Endpoint: p=0.389	Baseline: -0.45 [-1.02 to 0.13] Day 10: -0.55 [-1.13 to 0.02] Endpoint: -0.36 [-0.94 to 0.21]	Day 10: 0.9 (large) Endpoint: 0.5 (moderate)
Hemoglobin (g/dL)	12.57 (± 1.91)	11.47 (± 1.78)	9.97 (± 1.73) ^{##}	11.34 (± 2.14)	9.50 (± 1.55) [*]	9.03 (± 2.75) ^{**}	Baseline: p=0.29	Baseline: -1.23 [-3.03 to 0.56] Day 10: -1.97	Day 10: 1.2 (large)

							Day 10: p=0.026 Endpoint: p=0.6173	[-3.77 to -0.17] Endpoint: -0.94 [-2.74 to 0.86]	Endpoint: 0.4 (small)
Hematocrit (%)	36.92 (± 4.94)	32.66 (± 5.46)	30.57 (± 4.58) ^{##}	33.67 (± 5.04)	29.03 (± 4.04)	27.78 (± 7.20) ^{**}	Baseline: p=0.29 Day 10: p=0.194 Endpoint: p=0.459	Baseline: -3.25 [-7.98 to 1.48] Day 10: -3.62 [-8.36 to 1.10] Endpoint: -2.79 [-7.52 to 1.94]	Day 10: 0.8 (large) Endpoint: 0.5 (moderate)
Leukocytes (mm ³)	11466.00 (± 6677.06)	14221.92 (± 5231.44)	17742.66 (± 11630.20)	12175.33 (± 9330.37)	23449.13 (± 33682.68)	23186.66 (± 21612.65)	Baseline: p=0.99 Day 10: p=0.476 Endpoint: p=0.99	Baseline: 709.30 [-15147 to 16566] Day 10: 9227 [-6629 to 25083] Endpoint: 5444 [-10412 to 21300]	Day 10: 0.4 (small) Endpoint: 0.3 (small)
Segmented Neutrals (mm ³)	9890.16 (± 5904.32)	13010.82 (± 3191.26)	13655.49 (± 10037.05)	9834.14 (± 7425.83)	10154.81 (± 3450.12)	15017.58 (± 11566.73)	Baseline: p=0.99 Day 10: p=0.91 Endpoint: p=0.99	Baseline: -56.02 [-6836 to 6724] Day 10: -2856 [-9636 to 3924] Endpoint: 1362 [-5418 to 8142]	Day 10: 0.9 (large) Endpoint: 0.1 (small)
Eosinophiles (mm ³)	47.43 (± 90.35)	19.41 (± 29.58)	1070.21 (± 2825.97) [#]	49.73 (± 108.99)	115.11 (± 114.62)	223.86 (± 229.56)	Baseline: p=0.99 Day 10: p=0.99 Endpoint: p=0.146	Baseline: 2.30 [-1032 to 1037] Day 10: 95.70 [-939 to 1130] Endpoint: - 846.40 [-1881 to 188.3]	Day 10: 1.1 (large) Endpoint: 0.4 (small)
Basophiles (mm ³)	5.84 (± 6.07)	7.83 (± 11.16)	18.54 (± 27.53)	7.57 (± 11.23)	10.77 (± 18.75)	22.88 (± 30.30)	Baseline: p=0.99 Day 10: p=0.99 Endpoint: p=0.99	Baseline: 1.73 [-15.79 to 19.26] Day 10: 2.93 [-14.59 to 20.46] Endpoint: 4.33 [-13.19 to 21.86]	Day 10: 0.2 (small) Endpoint: 0.2 (small)
Lymphocyte (mm ³)	764.31 (± 415.39)	1138.70 (± 484.81)	1554.00 (± 1072.52)	1183.26 (± 1224.40)	1309.53 (± 560.02)	2713.83	Baseline: p=0.87	Baseline: 418.9 [-543 to 1381] Day 10: 170.8	Day 10: 0.3 (small)

						(± 1899.26) ^{**} , \$*	Day 10: p=0.99 Endpoint: p=0.0125	[-791.1 to 1133] Endpoint: 1160.00 [197.90 to 2122.00]	Endpoint: 0.8 (large)
Monocytes (mm ³)	557.06 (± 459.19)	936.71 (± 499.14)	1057.01 (± 646.43)	661.23 (± 542.04)	1224.89 (± 496.07) [*]	1346.20 (± 862.56) ^{**}	Baseline: p=0.99 Day 10: p=0.576 Endpoint: p=0.571	Baseline: 104.2 [-431.3 to 639.6] Day 10: 288.2 [-247.2 to 823.6] Endpoint: 289.2 [-246.2 to 824.6]	Day 10: 0.6 (moderate) Endpoint: 0.4 (small)
Platelets (mm ³)	189800.00 (± 92499.57)	237890.86 (± 71588.08)	231266.66 (± 104779.67)	210028.26 (± 90254.29)	261858.03 (± 145159.59)	288800.00 (± 166270.09)	Baseline: p=0.99 Day 10: p=0.99 Endpoint: p=0.54	Baseline: 20228 [-83748 to 124204] Day 10: 23967 [-80009 to 127943] Endpoint: 57533 [-46443 to 161509]	Day 10: 0.2 (small) Endpoint: 0.4 (small)

* Intragroup difference (PBMT-sMF) compared to the baseline (p<0.05); \$* Intragroup difference (PBMT-sMF) compared to the Day 10 (p<0.01); ** Intragroup difference (PBMT-sMF) compared to the baseline (p<0.01); # Intragroup difference (Placebo) compared to the baseline (p<0.05); ## Intragroup difference (Placebo) compared to baseline (p<0.01). Continuous variables are expressed as mean (SD). PBMT-sMF: photobiomodulation therapy combined with static magnetic field

Sample size calculation for further randomized controlled trials

Based on our results for the primary outcome (length of stay in the ICU), we are able to determine the sample size for further studies investigating the effects of PBMT-sMF in patients admitted to the ICU with COVID-19 requiring invasive mechanical ventilation.

It was observed that the length of stay in the ICU for patients treated with placebo was 23.06 (\pm 20.37), and for patients treated with PBMT-sMF it was 16.26 (\pm 9.61). Therefore, considering a β value of 20% and α of 5%, the calculation resulted in a sample of 68 patients per group. We used the SPHTM Analytics website to calculate the sample (<https://www.sphanalytics.com/sample-size-calculator-using-average-values/>).

DISCUSSION

This is the first randomized triple-blinded placebo-controlled trial to assess the effects of PBMT-sMF in patients with severe COVID-19 requiring mechanical ventilation. We observed that length of stay in the ICU for PBMT-sMF group was shorter than to placebo group. However, there was no statistically difference between groups. In contrast, the use of PBMT-sMF increased diaphragm thickness at day 10 and at the endpoint assessment compared to placebo treatment. Furthermore, PBMT-sMF was superior to placebo in improving ventilatory parameters, decreasing FiO₂ and increasing PO₂/FiO₂ at the endpoint assessment. In addition, the patients allocated to the PBMT-sMF group had decreased CRP levels and increased lymphocytes count at the endpoint assessment compared to the placebo group. Finally, PBMT-sMF was superior to placebo in the decrease of hemoglobin count at assessment of day 10. Regarding the other secondary outcomes, no between-group differences were observed.

Although there is speculation about the possible benefits of PBMT (isolated or combined with sMF) in patients with COVID-19,⁴² to date this is the only one randomized controlled trial carried out in this field. Therefore, the direct comparison with other randomized controlled trials is limited. However, we observed that the use of PBMT-sMF increased the muscle thickness and consequently its ability to generate strength,⁴³⁻⁴⁵ and also to prevent the harms due disuse³⁰ as previously observed in skeletal muscles of humans. In addition, there is evidence that PBMT modulates the inflammatory process through decreased CRP levels also in skeletal muscle of humans,^{46,47} as we observed in our study. In regards of other treatments than PBMT to COVID-19, it has been shown that patients treated with lopinavir-ritonavir have a time to clinical improvement similar to the patients treated with standard care alone.⁹ In addition, treatment with convalescent plasma added to a standard treatment was similar to

standard treatment alone regarding time to clinical improvement within 28 days.⁴⁸ In contrast, patients that used remdesivir had a shorter time to recovery than patients treated with placebo.¹⁰ In our trial, we observed that patients treated with PBMT-sMF had shorter time to recovery as well. However, there was no difference between PBMT-sMF and placebo group, which may probably have been caused by the small sample size. It is important to highlight that we included only patients admitted to the ICU and requiring invasive mechanical ventilation, which is different than the aforementioned studies.^{9,10,48} Finally, we did not observe adverse effects with the use of PBMT-sMF, while the treatment with convalescent plasma added to a standard treatment, lopinavir-ritonavir, and remdesivir caused some adverse effects such as gastrointestinal events, chill and rashes, acute kidney injury and even serious respiratory failure.^{9,10,48}

PBMT-sMF was able to improve some ventilatory parameters, besides inflammatory and infectious process and immune response in patients with severe COVID-19 requiring mechanical ventilation. It was previously observed that patients with severe COVID-19 present elevated ventilation-perfusion mismatch due to high dead space fraction.⁴⁹ In our study, we observed a better ventilation/perfusion rate associated to a preservation and improvement of diaphragm thickness in patients treated with PBMT-sMF. These improvements possibly led to decreased inflammation and infection (CRP) helping the immune response (lymphocytes) of these patients. These findings suggest that the preservation of the main respiratory muscle may facilitate the process of weaning from mechanical ventilation and trigger a cascade of positive effects, improving the clinical condition of the patients. We observed that patients in the PBMT-sMF group had shorter length of stay in the hospital, considering both all patients and only the survivors. Therefore, these findings suggest that treatment with PBMT-sMF may reduce the burden caused in the hospital and health systems, and the use of scarce health care resources during this pandemic. In addition, PBMT-sMF has proven to be a safe therapy as there were no adverse effects with its use. In addition, the number of deaths in the PBMT-sMF group was smaller than in the placebo group, although there was no statistically difference between groups.

This trial was prospectively registered, we used true randomization, concealment allocation, blindness of therapists, outcome assessors and patients. Statistical analysis was conducted following intention-to-treat principles and it was performed by a blind researcher for the treatment' allocation. Moreover, we used a placebo group to control for confounders such as placebo effect, regression to mean, and natural recovery. However, although we have included several features in order to minimize bias, this study has some limitations. There were two deviation from the registered protocol. The first one was that we estimated that the endpoint

assessment would be up to 20 days after randomization, however, as the endpoint assessment directly depended on the length of stay in the ICU, in some cases this assessment took more than 20 days. The second deviation was not having assessing IgG, IgM and D-dimmer because the third part laboratory in charge to carry out the blood analysis was not able to implement the necessary routines before the beginning of our trial. In addition, we might consider as a limitation did not following up the patients after hospital discharge. Finally, another limitation to be considered is the small sample size.

This trial is the first one assessing the effects of PBMT-sMF in patients with severe COVID-19, therefore was unknown a priori the adequate sample size to detect precise differences in the primary outcome of the study. However, this study was important to estimate the adequate sample size for further studies considering length of stay in the ICU as a primary outcome. Based in our results we estimated that further studies will require $n= 68$ patients per group to detect clinically important difference between groups. Therefore, further studies with rigorous methodological quality and adequate sample size are needed to investigate whether PBMT-sMF is able to decrease the length of stay in the ICU for patients with severe COVID-19 requiring invasive mechanical ventilation.

Conclusion

Among patients with severe COVID-19 requiring invasive mechanical ventilation, PBMT-sMF was not statistically different than placebo to the length of stay in the ICU. However, it is important to highlight that our sample size was underpowered to detect statistical differences to the primary outcome. In contrast, PBMT-sMF increased diaphragm thickness, decreased FiO_2 , increased PO_2/FiO_2 , decreased CRP levels and hemoglobin count, and increased lymphocytes count.

ACKNOWLEDGMENT

The authors thank the entire multidisciplinary team that worked in the ICU of Hospital Tacchini, the Tacchini Institute for Health Research, and Marcos Vinícius Ferlito and Tauani de Souza by the contribution with the research team.

REFERENCES

1. World Health Organization (WHO). Report of the WHO-China Joint Mission on coronavirus disease 2019 (COVID-19). Available from <https://www.who.int/docs/default-source/coronaviruse/who-china-joint-mission-on-covid-19-final-report.pdf> (accessed 25 May 2020).
2. Huang C, Wang Y, Li X, et al. Clinical features of patients infected with 2019 novel coronavirus in Wuhan, China. *Lancet* 2020;395:497-506. Erratum in: *Lancet* 2020.
3. Israelsen SB, Kristiansen KT, Hindsberger B, et al. Characteristics of patients with COVID-19 pneumonia at Hvidovre Hospital, March-April 2020. *Dan Med J* 2020;67:A05200313.
4. Petrilli CM, Jones SA, Yang J, et al. Factors associated with hospital admission and critical illness among 5279 people with coronavirus disease 2019 in New York City: prospective cohort study. *BMJ* 2020;369:m1966.
5. Wang D, Hu B, Hu C, et al. Clinical characteristics of 138 hospitalized patients with 2019 novel coronavirus-infected pneumonia in Wuhan, China. *JAMA* 2020;323:1061-1069.
6. Wu C, Chen X, Cai Y, et al. Risk factors associated with acute respiratory distress syndrome and death in patients with coronavirus disease 2019 pneumonia in Wuhan, China. *JAMA Intern Med* 2020;180:934-943.
7. Richardson S, Hirsch JS, Narasimhan M, et al. Presenting characteristics, comorbidities, and outcomes among 5700 patients hospitalized with COVID-19 in the New York city area. *JAMA* 2020;323:2052-2059. Erratum in: *JAMA* 2020;323:2098.
8. Tang W, Cao Z, Han M, et al. Hydroxychloroquine in patients with mainly mild to moderate coronavirus disease 2019: open label, randomised controlled trial. *BMJ* 2020;369:m1849.
9. Cao B, Wang Y, Wen D, et al. A Trial of lopinavir-ritonavir in adults hospitalized with severe Covid-19. *N Engl J Med* 2020;382(19):1787-1799.

10. Beigel JH, Tomashek KM, Dodd LE, et al. Remdesivir for the treatment of Covid-19 - final report. *N Engl J Med* 2020:NEJMoa2007764.
11. Tomazini BM, Maia IS, Cavalcanti AB, et al. Effect of dexamethasone on days alive and ventilator-free in patients with moderate or severe acute respiratory distress syndrome and COVID-19: The CoDEX Randomized Clinical Trial. *JAMA* 2020;324:1307-1316.
12. Wilcox SR. Management of respiratory failure due to covid-19. *BMJ* 2020;369:m1786.
13. Wu Z, McGoogan JM. Characteristics of and important lessons from the coronavirus disease 2019 (COVID-19) outbreak in China: summary of a report of 72 314 cases from the Chinese center for disease control and prevention. *JAMA* 2020;323:1239-1242.
14. Price S, Singh S, Ledot S, et al. Respiratory management in severe acute respiratory syndrome coronavirus 2 infection. *Eur Heart J Acute Cardiovasc Care* 2020;9:229-238.
15. Wujtewicz M, Dylczyk-Sommer A, Aszkiełowicz A, Zdanowski S, Piwowarczyk S, Owczuk R. COVID-19 - what should anaesthesiologists and intensivists know about it? *Anaesthesiol Intensive Ther* 2020;52:34-41.
16. Lazzeri M, Lanza A, Bellini R, et al. Respiratory physiotherapy in patients with COVID-19 infection in acute setting: a Position Paper of the Italian Association of Respiratory Physiotherapists (ARIR). *Monaldi Arch Chest Dis* 2020;90(1).
17. Bissett B, Leditschke IA, Paratz JD, Boots RJ. Respiratory dysfunction in ventilated patients: can inspiratory muscle training help? *Anaesth Intensive Care* 2012;40:236-246.
18. Daniel Martin A, Smith BK, Gabrielli A. Mechanical ventilation, diaphragm weakness and weaning: a rehabilitation perspective. *Respir Physiol Neurobiol* 2013;189:377-832.
19. Leal-Junior ECP, Lopes-Martins RÁB, Bjordal JM. Clinical and scientific recommendations for the use of photobiomodulation therapy in exercise performance enhancement and post-exercise recovery: current evidence and future directions. *Braz J Phys Ther*. 2019;23:71-75.

20. Albuquerque-Pontes GM, Vieira RP, Tomazoni SS, et al. Effect of pre-irradiation with different doses, wavelengths, and application intervals of low-level laser therapy on cytochrome c oxidase activity in intact skeletal muscle of rats. *Lasers Med Sci* 2015;30:59-66.
21. Suardi N, Sodipo BK, Mustafa MZ, Ali Z. Effect of visible laser light on ATP level of anaemic red blood cell. *J Photochem Photobiol B* 2016;162:703-706.
22. Keszler A, Lindemer B, Hogg N, Weihrauch D, Lohr NL. Wavelength-dependence of vasodilation and NO release from S-nitrosothiols and dinitrosyl iron complexes by far red/near infrared light. *Arch Biochem Biophys* 2018;649:47-52.
23. Linares SN, Beltrame T, Ferraresi C, Galdino GAM, Catai AM. Photobiomodulation effect on local hemoglobin concentration assessed by near-infrared spectroscopy in humans. *Lasers Med Sci* 2020;35:641-649.
24. Chen YC, Su YH, Lin YT, Huang CC, Hwang IS. Acute physiological responses to combined blood flow restriction and low-level laser. *Eur J Appl Physiol* 2020;120:1437-1447.
25. De Marchi T, Leal Junior EC, Bortoli C, Tomazoni SS, Lopes-Martins RA, Salvador M. Low-level laser therapy (LLLT) in human progressive-intensity running: effects on exercise performance, skeletal muscle status, and oxidative stress. *Lasers Med Sci* 2012;27:231-236.
26. Sakurai Y, Yamaguchi M, Abiko Y. Inhibitory effect of low-level laser irradiation on LPS-stimulated prostaglandin E2 production and cyclooxygenase-2 in human gingival fibroblasts. *Eur J Oral Sci* 2000;108:29-34.
27. Langella LG, Casalechi HL, Tomazoni SS, et al. Photobiomodulation therapy (PBMT) on acute pain and inflammation in patients who underwent total hip arthroplasty-a randomized, triple-blind, placebo-controlled clinical trial. *Lasers Med Sci* 2018;33:1933-1940.
28. Tomazoni SS, Costa LOP, Joensen J, et al. Photobiomodulation therapy is able to modulate PGE₂ levels in patients with chronic non-specific low back pain: a randomized placebo-controlled trial. *Lasers Surg Med* 2020. [Epub ahead of print].

29. Grandinetti Vdos S, Miranda EF, Johnson DS, et al. The thermal impact of phototherapy with concurrent super-pulsed lasers and red and infrared LEDs on human skin. *Lasers Med Sci* 2015;30:1575-1581.
30. de Paiva PRV, Casalechi HL, Tomazoni SS, et al. Does the combination of photobiomodulation therapy (PBMT) and static magnetic fields (sMF) potentiate the effects of aerobic endurance training and decrease the loss of performance during detraining? A randomised, triple-blinded, placebo-controlled trial. *BMC Sports Sci Med Rehabil* 2020;12:23.
31. Friedmann H, Lipovsky A, Nitzan Y, Lubart R. Combined magnetic and pulsed laser fields produce synergistic acceleration of cellular electron transfer. *Laser Ther* 2009;18:137–141.
32. Leal-Junior EC, Vanin AA, Miranda EF, de Carvalho Pde T, Dal Corso S, Bjordal JM. Effect of phototherapy (low-level laser therapy and light-emitting diode therapy) on exercise performance and markers of exercise recovery: a systematic review with meta-analysis. *Lasers Med Sci* 2015;30:925-939.
33. Vanin AA, Verhagen E, Barboza SD, Costa LOP, Leal-Junior ECP. Photobiomodulation therapy for the improvement of muscular performance and reduction of muscular fatigue associated with exercise in healthy people: a systematic review and meta-analysis. *Lasers Med Sci* 2018;33:181-214.
34. de Souza GHM, Ferraresi C, Moreno MA, et al. Acute effects of photobiomodulation therapy applied to respiratory muscles of chronic obstructive pulmonary disease patients: a double-blind, randomized, placebo-controlled crossover trial. *Lasers Med Sci* 2020;35:1055-1063.
35. de Lima FM, Vitoretti L, Coelho F, et al. Suppressive effect of low-level laser therapy on tracheal hyperresponsiveness and lung inflammation in rat subjected to intestinal ischemia and reperfusion. *Lasers Med Sci* 2013;28:551-564.
36. Aimbire F, Bjordal JM, Iversen VV, et al. Low level laser therapy partially restores trachea muscle relaxation response in rats with tumor necrosis factor alpha-mediated smooth airway muscle dysfunction. *Lasers Surg Med* 2006;38:773-8.

37. Silva VR, Marcondes P, Silva M, et al. Low-level laser therapy inhibits bronchoconstriction, Th2 inflammation and airway remodeling in allergic asthma. *Respir Physiol Neurobiol* 2014;194:37-48.
38. Magalhães PAF, Camillo CA, Langer D, Andrade LB, Duarte MDCMB, Gosselink R. Weaning failure and respiratory muscle function: What has been done and what can be improved? *Respir Med* 2018;134:54-61.
39. Sklar MC, Dres M, Fan E, et al. Association of low baseline diaphragm muscle mass with prolonged mechanical ventilation and mortality among critically ill adults. *JAMA Netw Open* 2020;3:e1921520.
40. Hollis S, Campbell F. What is meant by intention to treat analysis? Survey of published randomised controlled trials. *BMJ* 1999;319:670-674.
41. Elkins MR, Moseley AM. Intention-to-treat analysis. *J Physiother* 2015;61:165-167.
42. Fernandes AB, de Lima CJ, Villaverde AGJB, Pereira PC, Carvalho HC, Zângaro RA. Photobiomodulation: shining light on COVID-19. *Photobiomodul Photomed Laser Surg* 2020;38:395-397.
43. Vanin AA, Miranda EF, Machado CS, et al. What is the best moment to apply phototherapy when associated to a strength training program? A randomized, double-blinded, placebo-controlled trial: Phototherapy in association to strength training. *Lasers Med Sci* 2016;31:1555-1564.
44. Baroni BM, Rodrigues R, Freire BB, Franke Rde A, Geremia JM, Vaz MA. Effect of low-level laser therapy on muscle adaptation to knee extensor eccentric training. *Eur J Appl Physiol* 2015;115:639-647.
45. Leal-Junior ECP, de Oliveira MFD, Joensen J, Stausholm MB, Bjordal JM, Tomazoni SS. What is the optimal time-response window for the use of photobiomodulation therapy combined with static magnetic field (PBMT-sMF) for the improvement of exercise

performance and recovery, and for how long the effects last? A randomized, triple-blinded, placebo-controlled trial. *BMC Sports Sci Med Rehabil* 2020;12:64.

46. Leal Junior EC, Lopes-Martins RA, Rossi RP, et al. Effect of cluster multi-diode light emitting diode therapy (LEDT) on exercise-induced skeletal muscle fatigue and skeletal muscle recovery in humans. *Lasers Surg Med.* 2009;41:572-577.

47. Leal Junior EC, Lopes-Martins RA, Frigo L, et al. Effects of low-level laser therapy (LLLT) in the development of exercise-induced skeletal muscle fatigue and changes in biochemical markers related to postexercise recovery. *J Orthop Sports Phys Ther* 2010;40:524-532.

48. Li L, Zhang W, Hu Y, et al. Effect of convalescent plasma therapy on time to clinical improvement in patients with severe and life-threatening COVID-19: a randomized clinical trial. *JAMA* 2020;324:460-470. Erratum in: *JAMA* 2020;324:519.

49. Mauri T, Spinelli E, Scotti E, et al. Potential for lung recruitment and ventilation-perfusion mismatch in patients with the acute respiratory distress syndrome from coronavirus disease 2019. *Crit Care Med* 2020 [Epub ahead of print].