

- 1 Convalescent Plasma in COVID-19. Mortality-Safety First Results of the Prospective Multicenter
- 2 FALP 001-2020 Trial
- 3 Raimundo Gazitúa (1), José Luis Briones (1), Carolina Selman (2), Franz Villarroel-Espíndola (3),
- 4 Adam Aguirre (3), Roxana González-Steigmaier (3), Karina Cereceda (3), Mauricio Mahave (4),
- 5 Betzabé Rubio (5), Pedro Ferrer-Rosende (5), Jorge Sapunar (5) Hugo Marsiglia (5), Ricardo
- 6 Morales (6), Fernanda Yarad (6), María Elvira Balcells (7), Luis Rojas (7) Bruno Nervi (8), Jyh Kae
- 7 Nien (9), Javier Garate (10), Carolina Prieto (11), Sofía Palma (11), Carolina Escobar (11),
- 8 Josefina Bascuñan (12), Rodrigo Muñoz (13), Mónica Pinto (13), Daniela Cardemil (13) Marcelo
- 9 Navarrete (14) Soledad Reyes (15), Victoria Espinosa (15), Nicolás Yáñez (16) and Christian
- 10 Caglevic (5)

- 11 1. Hematology Department, Instituto Oncológico Fundación Arturo López Pérez,
- 12 Santiago, Chile
- 13 2. Diagnostic Department, Instituto Oncológico Fundación Arturo López Pérez, Santiago,
- 14 Chile
- 15 3. Translational Medicine Research Laboratory. Fundación Arturo López Pérez, Santiago,
- 16 Chile
- 17 4. Medical Oncology Department, Instituto Oncológico Fundación Arturo López Pérez,
- 18 Santiago, Chile
- 19 5. Cancer Research Department. Instituto Oncológico Fundación Arturo López Pérez,
- 20 Santiago, Chile
- 21 6. Internal Medicine Department, Instituto Oncológico Fundación Arturo López Pérez,
- 22 Santiago, Chile
- 23 7. Department of Infectious Diseases. School of Medicine. Pontificia Universidad Católica
- 24 de Chile, Santiago, Chile
- 25 8. Department of Hematology and Oncology. School of Medicine. Pontificia Universidad

- 26 Católica de Chile, Santiago, Chile
- 27 9. Clínica Dávila, Santiago, Chile
- 28 10. Clínica Red Salud, Santiago, Chile
- 29 11. Hospital DIPRECA, Santiago, Chile
- 30 12. Hospital del Trabajador, Asociación Chilena de Seguridad, Santiago, Chile
- 31 13. Department of Infectious Diseases. Hospital Clínico de Magallanes, Punta Arenas, Chile
- 32 14. School of Medicine, University of Magallanes, Punta Arenas, Chile
- 33 15. Clínica Alemana Temuco, Chile
- 34 16. Medical Oncology Department, Hospital Regional de Talca, Chile

35

36 **Corresponding author:**

37 Raimundo Gazitúa

38 Instituto Oncológico Fundación Arturo López Pérez

39 Avenida Rancagua 795, 3rd Floor

40 Hematology Department

41 Santiago de Chile

42 Phone +569 84290128

43 E-Mail raimundo.gazitua@falp.org

44

45

46

47

48

49

50 **Abstract**

51 **Background:** The use of convalescent plasma (CP) to treat COVID-19 has shown promising
52 results; however, its effectiveness remains uncertain. The purpose of this study was to
53 determine the safety and mortality of CP among patients hospitalized with COVID-19.

54 **Study Design and Methods:** This multicenter, open-label, uncontrolled clinical trial is currently
55 being conducted at nine hospitals in Chile. Patients hospitalized due to COVID-19 who were
56 still within 14 days since symptom onset were classified into four groups: Patients with cancer
57 and severe COVID-19. Patients with cancer and non-severe COVID-19. Patients with severe
58 COVID-19 and patients with non-severe COVID-19 only. The intervention involved two 200-cc.
59 CP transfusions with anti-SARS-CoV-2 IgG titers $\geq 1:320$ collected from COVID-19-recovered
60 donors.

61 **Results:** 192 patients hospitalized for COVID-19 received CP transfusions. At the first
62 transfusion, 90.6% fulfilled the criteria for severity, and 41.1% required mechanical ventilation.
63 11.5% of the patients had cancer. Overall 7-day and 30-day mortality since the first CP
64 transfusion was 5.7% and 16.1% respectively. There were no differences at either time point in
65 mortality between the four groups. Patients on mechanical ventilation when receiving CP had
66 higher mortality rates than those who were not (22.8% vs. 11.5%; $p = 0.037$). Overall 30-day
67 mortality was higher in patients over 65 than in younger patients ($p = 0.019$). Severe adverse
68 events were reported in four patients (2.1%) with an overall transfusion-related lung injury
69 rate of 1.56%. No CP-related deaths occurred.

70 **Discussion:** CP is safe when used in patients with COVID-19 even when also presenting severity
71 criteria or risk factors. Our mortality rate is comparable to reports from larger studies.
72 Controlled clinical trials are required to determine efficacy.

73 **Registration:** NCT04384588

74 **Keywords:** COVID-19, Convalescent Plasma, SARS- COV2, Lung Infectious Diseases, Cancer

75 **Introduction**

76 Severe acute respiratory syndrome coronavirus 2 (SARS-CoV-2) was first described in
77 December 2019 in Wuhan, China and quickly spread across the globe, being declared a
78 pandemic by the World Health Organization (WHO) on March 11, 2020 (1). The first case in
79 South America was reported on February 26 in Brazil (2), while in Chile, the index case was
80 confirmed on March 3, 2020 (3). Currently, 29% of the cases worldwide are concentrated in
81 Latin America, one of the most affected areas in the world (2), which constitutes a serious
82 health problem considering the complex socioeconomic and health characteristics of this
83 region.

84 At the moment, there is neither a completely effective standard of care nor a proven
85 effective vaccine against COVID-19. Many therapies have been evaluated against SARS-CoV-2
86 with mixed results. The combination of hydroxychloroquine and azithromycin in an early case
87 series seemed promising (4), but randomized studies were unable to confirm its efficacy, and
88 had an even higher incidence of adverse effects (5-7). The antiviral drug remdesivir provides
89 clinical improvement yet no decrease in mortality (8,9). Moreover, antiviral drugs
90 lopinavir/ritonavir were also shown to be ineffective against SARS CoV-2 (10). Only low doses
91 of dexamethasone decrease the mortality rate in patients with mechanical ventilation and
92 oxygen supplementation requirements (11).

93 Passive immunotherapy with convalescent plasma (CP) from individuals who have
94 already recovered from infection has been safe and effective against previous viral outbreaks
95 including the SARS-CoV-1, MERS-CoV, influenza A (H1N1), and the Ebola virus epidemics (12-
96 17). The initial reports published on using CP to treat COVID-19 suggest that it confers clinical
97 improvement, decreases viral load, and shortens mechanical ventilation duration (18,19). The

98 use of CP is safe, with an incidence of related serious adverse events of less than 1% of treated
99 patients, similar to the usual practice of transfusion medicine (20).

100 In this work, we report on the safety and in-hospital mortality of patients with COVID-
101 19 treated with CP. Because patients with cancer commonly have impaired humoral immunity
102 (21) we included a separate cohort of patients with cancer as part of our compassionate access
103 protocol.

104 The study is a part of the NCT04384588 protocol.

105

106 **Patients and Methods**

107 This is a multicenter, open-label, uncontrolled clinical trial. For data analysis purposes,
108 the cohort was divided into four arms: A) Patients with cancer who meet the severity criteria;
109 B) Patients with cancer who do not meet the severity criteria but have at least one poor
110 prognostic factor; C) Patients without cancer who meet the WHO severity criteria; and D)
111 Patients without cancer without severity criteria with at least two risk factors for poor
112 prognosis (S1 Appendixes 1a, 1b, and 1c) (**20, 22, 23, 24**). The criteria used to define patients
113 with cancer are listed in S2 Appendix.

114 A case of COVID-19 was defined as a patient with clinically compatible symptoms
115 (**25,26**) (S3 Appendix) and an RT-qPCR-based confirmation of SARS-CoV-2 from a
116 nasopharyngeal swab or with a chest CT scan compatible with COVID-19 (**27**).

117 This project was developed and executed in accordance with Chilean Law No. 20,120
118 ("On scientific research in the human being, its genome, and prohibitis human clonation": All
119 scientific research on a human being must have his prior, express, free and informed consent,
120 or, failing that, that of the person who must supply his will in accordance with the law."); Law
121 No. 20,584 ("Regulates the rights and duties that people have in relation to actions related to
122 their health care"); Law No. 19.628 ("On protection of private life"); CIOMS Guidelines,
123 Declaration of Helsinki, Nuremberg code, The Universal Declaration of Human Rights and The
124 International Covenant on Civil and Political Rights

125 This protocol was approved by our local ethics committee: Comité Ético Científico
126 Fundación Arturo López Pérez, on April 7th, 2020. Informed consent was obtained from all
127 patients or a representative when the patients were unable to sign themselves due to their
128 health condition. A total of 41 patients from the NCT04375098 trial were included in this
129 report through a collaborative network.

130 **Study population**

131 Patients were enrolled between May 1 and August 7, 2020 in nine hospitals from four
132 Chilean cities: Instituto Oncológico Fundación Arturo López Pérez (FALP) (Santiago,
133 Metropolitan Region), Pontificia Universidad Católica de Chile (Santiago, Metropolitan Region),
134 Clínica Dávila (Santiago, Metropolitan Region), RedSalud (Santiago, Metropolitan Region),
135 Hospital del Trabajador (Santiago, Metropolitan Region), Hospital Dipreca (Santiago,
136 Metropolitan Region), Hospital Clínico de Magallanes (Punta Arenas, Magellan Region), Clínica
137 Alemana Temuco (Temuco, Araucania region), Hospital Regional de Talca (Talca, Maule
138 Region).

139 **Participation criteria**

140 Patients were eligible to receive CP if they were at least 18 years old with a confirmed
141 diagnosis of severe SARS-CoV-2 infection or non-severe COVID-19 with two or more poor
142 prognostic factors within the first 14 days from symptom onset. Patients with a known allergy
143 to previous plasma infusions, multiple organ dysfunction, active intracerebral hemorrhage,
144 disseminated intravascular coagulation requiring transfusion, acute respiratory distress
145 syndrome, or with active cancer and a survival expectancy less than 1 year (S4 Appendix) were
146 excluded.

147 **Plasma collection, processing, and conservation**

148 Plasma was obtained from voluntary donors registered through a website
149 (<https://www.donantecovid.cl/>) who were diagnosed with COVID-19 by RT-PCR from a
150 nasopharyngeal swab sample or who presented clinically compatible symptoms and
151 tomographic findings. Before the donation, patients had to be asymptomatic for at least 21
152 days with two negative RT-qPCR tests on two consecutive days or asymptomatic for at least 28
153 days. All donors underwent a blood-bank selection survey plus microbiological screening for

154 HIV, hepatitis-B and -C, syphilis, HTLV-I and -II, and Chagas. In addition, a nucleic acid
155 amplification test (NAAT) was performed for hepatitis-B, -C, and HIV. All women, with or
156 without a history of pregnancy, were tested for anti-HLA antibodies. Anti-SARS-CoV2
157 antibodies were measured, and only donors with IgG \geq 1:320 (ELISA Euroimmun®) were
158 selected. Plasma was collected by apheresis (Trima Accel® or Spectra Optia, Terumo®) and the
159 volumes obtained were pooled and divided into doses of 200 mL each. CP units were stored at
160 -40°C.

161 **Convalescent plasma transfusion**

162 Each patient received two 200-mL units 24 hours apart. Units were selected according
163 to blood type and Rh compatibility. The transfusion procedure took 1 to 2 hours, according to
164 the treating physician's preference. Premedication once administered with chlorpheniramine
165 i.v. 10mg and acetaminophen 1 gr. was also permitted.

166 **Variables analyzed**

167 This report analyzed the primary outcomes of the FALP project COVID 001-2020
168 (NCT04384588): In-Hospital Mortality and Adverse Event Occurrence.

169 **Statistical analysis**

170 Demographic and epidemiological variables are described in frequency and
171 percentage, while continuous variables by their median and interquartile range. The
172 relationships between the categorical variables were evaluated using the Chi-square test.
173 When the expected frequency for a combination of variables was less than 5, Fischer's exact
174 test was performed. Overall survival was defined as the time from the first CP transfusion to
175 the time of death or date of the last follow-up. Survival probability was estimated using the
176 Kaplan-Meier method and the difference in survival between the groups was examined using
177 the log-rank test. In addition, the Cox proportional-hazards model was applied to determine

178 possible risk factors associated with mortality. A crude hazard ratio (HR) and an HR adjusted
179 for sex, age, ventilation, days of hospitalization, and days of symptom duration until
180 transfusion were estimated along with their 95% confidence intervals (Cis). A p-value under
181 0.05 was considered statistically significant. Statistical analyses were performed with STATA
182 and R program v 3.6.0. (RCore Team, 2020, Vienna, Austria).

183 **Role of funding source**

184 The funders had no role in the design, analysis, or execution of the study nor in the decision to
185 submit the manuscript for publication.

186 **Results**

187 **Patient characteristics**

188 Between May 1 and August 7, 2020, 192 patients from nine hospitals in four different
189 regions of Chile enrolled in this study (Figure 1). Table 1 details the clinical and demographic
190 characteristics of these patients. The median follow-up was 62 days (IQR: 34.8 to 88.0) while
191 the median age was 59 years old (IQR: 49.8 to 67.0); 90.6% of the population met the severity
192 criteria, 71.9% were hospitalized in an Intensive Care Unit, and 41.1% received mechanical
193 ventilatory support, which was invasive in 30.7% of cases. The median SOFA score was 3 (IQR:
194 2 to 5) while the median PaO₂/FiO₂ was 181 (IQR: 127 to 273). The most common
195 comorbidities were hypertension (59.0%) and diabetes mellitus (56.0%). Cancer was present in
196 11.5% of the cohort (n = 22)

197 **Outcomes**

198 The mortality rates 7 and 30 days after CP administration were 5.7% and 16.1%,
199 respectively (Figure 2). There were no significant differences in mortality related to the timing
200 of the initial CP administration. Patients who received CP within the first 7 days of symptom

201 onset had a 7-day mortality rate of 9.2% (95% CI, 4.1% to 17.3%) versus. 2.9% (95% CI, 0.6% to
202 8.1%; $p = 0.06$) for those who received CP between 8 and 14 days. Patients who received CP
203 within the first 7 days of symptom onset had a 30-day mortality rate of 17.2% (95% CI, 10.0%
204 to 26.8%) versus. 15.2% (95% CI, 9.0% to 23.6%; $p = 0.707$) for those who received CP between
205 8 and 14 days

206 Patients who received plasma during the first 3 days of hospitalization did not register
207 any significant differences in terms of 7- or 30-day mortality compared with those transfused
208 after 3 days: 4.7% (95% CI, 1.7% to 9.8%) vs. 7.9% (95% CI, 2.6% to 17.6%; $p = 0.358$), and
209 14.0% (95% CI, 8.5% to 21.2%) vs. 20.6% (95% CI, 11.5% to 32.7%; $p = 0.237$) respectively.
210 Patients receiving mechanical ventilatory support at the time of CP administration had a higher
211 30-day mortality compared with patients who did not require mechanical ventilation: 22.8%
212 (95% CI, 14.1% to 33.6%) vs. 11.5% (95% CI, 6.3% to 18.9%; $p = 0.037$) (Table 2).

213 The trial arm with the highest mortality rate was the cancer and severe COVID group
214 with 20.0% after 30 days ($n = 3$). The severe COVID only group had a 17.0% mortality rate.
215 There were no deaths in the cancer and non-severe COVID group while the non-severe COVID
216 only group registered one death (9,1%). There were no statistically significant differences
217 between the different study groups in terms of 30-day mortality (Figure 3).

218 Patients aged over 65 years old showed higher mortality ($p = 0.019$) compared with
219 younger patients: 26.7% vs. 13.0% (45-65 years old) and 6.2% (18-44 years old) (Figure 4).
220 There were no differences in mortality by sex ($p = 0.326$), ABO group ($p = 0.89$), or cancer
221 status ($p = 0.690$). Age over 65 years old and mechanical ventilation at the time of CP
222 administration were the two risk factors significantly associated with mortality (Table 3).

223

224

225 **Adverse events**

226 We registered a total of 11 CP transfusion-related adverse events (2.9%), four (1.1%) of
227 which were considered to be serious adverse events (SAEs) related to CP transfusion including
228 three cases of transfusion-related acute lung injury (TRALI) and one case of thrombocytopenia.
229 No CP transfusion-related deaths were reported (Table 4). The adverse events are summarized
230 and described in Table 5.

231 **Discussion**

232 To the best of our knowledge, this is the first report of in-hospital mortality and
233 treatment safety from a Latin-American multicenter study on patients with COVID-19 who
234 received CP. Although this study did not aim to demonstrate the efficacy of CP, our reported 7-
235 and 30-days mortality rates are comparable with those reported by the Mayo Clinic in the
236 largest CP study to date, which showed 7- and 30 day-mortality rates of 10.5% and 24.5%,
237 respectively. Unlike the series published by Joyner et al. (2020), our cohort did not display
238 differences in mortality associated with CP administration during the first 3 days of
239 hospitalization compared to patients who were transfused later (22).

240 Mortality rates reported in patients with cancer and COVID-19 infection range from
241 30% to 39% (28,29). Many patients with cancer are immunocompromised as a consequence of
242 their underlying disease and an associated treatment regimen that often includes
243 myelosuppressive chemotherapy, immunosuppressive agents, and radiation, which may
244 increase mortality (30). In our series, patients with cancer had a 30-day mortality incidence of
245 13.6%, similar to patients without cancer and lower than reported in other cohort studies of
246 patients with cancer and COVID-19 infection. This low mortality rate may indicate that patients
247 with an impaired humoral and cellular response may benefit from passive antibody
248 administration impeding viral replication and modulating the inflammatory events associated
249 with COVID-19. In contrast to our results, a recent study on the use of CP in patients with

250 cancer reported a mortality rate of 41.7% (31). One important difference between the two
251 cohorts is the proportion of patients with hematological malignancies; 58,1% was reported by
252 Remblay et al, versus 36,3% from our trial. This particular subgroup seems to have higher
253 mortality rates than patients with solid tumors, which is an interesting issue that warrants
254 additional investigation.

255 As expected, elderly patients and patients requiring mechanical ventilation had
256 significantly higher mortality rates in our study. These findings are consistent with previous
257 evidence in patients with and without COVID-19 (32,33).

258 The main endpoint of our study was a safety assessment of the occurrence and type of
259 CP-related adverse events. Overall, 70% of patients reported at least one adverse event. This
260 rate is typical in a cohort of critically ill patients. Only 11 adverse events were related to the CP
261 transfusion, and four of these were identified as SAEs. All 11 adverse events were classified as
262 “possibly related” to the intervention by the treating physician using a four-item Likert-type
263 scale (probably, possibly, remotely, or not related). TRALI was the most frequent SAE (1.5%, n
264 = 3). This incidence is within the 0.001 to 2.1% range reported in both the general population
265 and critically ill patients (34, 35).

266 In patients with COVID-19 especially, it is difficult to assign with certainty the
267 occurrence of TRALI or Transfusion-associated circulatory overload (TACO) since, in the context
268 of mostly severe cases, respiratory failure is the predominant dysfunction and concomitant but
269 potentially unrelated worsening may occur close to the transfusion. As for thrombocytopenia,
270 post-transfusion purpura is rare, with an incidence of less than 0.01%, associated with the
271 detection of antiplatelet antibodies (36). In the only case of thrombocytopenia, the
272 antiplatelet antibody test was negative. Different mechanisms likely underlie COVID-19-related
273 thrombocytopenia, including direct inhibition of hematopoiesis in bone marrow by SARS-CoV-

274 2, autoimmune destruction induced by the virus, and platelet aggregation and consumption in
275 the lung parenchyma (37).

276 The present study has some limitations. Since we aimed to assess mortality rates and
277 safety, the absence of a control group prevents drawing conclusions on the benefits of CP
278 treatment. The lack of a control group was grounded on ethical concerns raised at the
279 beginning of the outbreak when the study was designed. Nevertheless, the observed mortality
280 rates are encouraging and additional studies with matched control cases are planned. While
281 donor anti-SARS-CoV-2 spike protein antibody titers were elevated ($\geq 1:320$), we have not yet
282 investigated their neutralizing activity. Ongoing experiments aim to characterize the
283 neutralizing antibody and cytokine content of CP and identify the factors potentially
284 responsible for its therapeutic benefits in patients with COVID-19 using multivariate analysis.
285 Such studies will generate new hypotheses on CP efficacy in regards to specific types and
286 amounts of neutralizing antibodies and cytokines.

287 Although CP transfusion has shown promising results against COVID-19 in case series (18,19)
288 and case-control studies (38), its real benefit remains unclear. The first published randomized
289 trial with CP in COVID-19 did not show significant improvement in the clinical condition of
290 patients with severe, life-threatening COVID-19 but the interpretation is limited by the study's
291 early endpoint. Nevertheless, patients with severe, non-life-threatening COVID-19 improved
292 significantly compared with the control group (91.3% vs. 68.2% (HR, 2.15 [95% CI, 1.07-4.32]; p
293 = 0.03) (39). These findings suggest that CP may be more effective in patients with COVID-19
294 without life-threatening conditions.

295 **Conclusions**

296 CP is safe when used in the COVID-19 population even for those who present severity
297 criteria and/or risk factors for poor prognosis including cancer. The mortality rate reported
298 here is comparable to those found in larger series and was higher in patients requiring

299 ventilatory support and those over 65 years old. In-depth analyses of the serological and
300 molecular characteristics of CP are needed to evaluate the efficacy of this intervention through
301 controlled clinical trials.

302 **Funding source:** “Fondo de Adopción tecnológica SIempre “ supported by SOFOFA,
303 Confederación de la Producción y de Comercio y Ministerio de Ciencia y Tecnología,
304 Conocimiento e Innovación. Chile.

305 **Conflict of Interest Disclosure:** Dr. Nicolas Yáñez reports personals fees from Merck and Pfizer.
306 Dr. Christian Caglevic reports personals fees from Bristol Myers Squibb, MSD, Roche,
307 Boehringer-Ingelheim and Andes Biotechnology, Lilly, Merck Sharpe and Dohme, Medivation,
308 Astra Zeneca, and Astellas Pharma. All other authors have no conflict of interest.

309 **Acknowledgments:** All study coordinators in particular to Giselle Godoy, Cecilia Martinez,
310 Macarena Ubal, Mayra Doddis, Isabel Rojo, and Ricardo Palomera. Blood Bank staff from
311 participating hospitals: Marcelo Díaz de Valdes, Jaime Pereira, Mayling Chang, Pablo
312 Sepulveda, Ricardo Hojas, Veronica Soto, Eugenio Reyes, Ana Gonzalez, Celia Gamonal, Marcos
313 Espinoza, Marcos Sandoval, and Marcelo Vega. Nordiana Baruzzi and Luz María González
314 Anguita. We’d like to thank the catg.cl laboratory for sampling processing at Punta Arenas, XII
315 Region. Chile. M.N. is supported by Grant MAG 1895. M.E.B is supported by Fondo Nacional de
316 Desarrollo Científico y Tecnológico.

317 **References**

- 318 (1) WHO Director-General's opening remarks at the media briefing on COVID-19 - 11 March
319 2020 [Internet]. Who.int. 2020 [cited 21 September 2020]. Available from:
320 [https://www.who.int/dg/speeches/detail/who-director-general-s-opening-remarks-at-the-](https://www.who.int/dg/speeches/detail/who-director-general-s-opening-remarks-at-the-media-briefing-on-covid-19---11-march-2020)
321 [media-briefing-on-covid-19---11-march-2020](https://www.who.int/dg/speeches/detail/who-director-general-s-opening-remarks-at-the-media-briefing-on-covid-19---11-march-2020)
- 322 (2) Brazil: WHO Coronavirus Disease (COVID-19) Dashboard [Internet]. Covid19.who.int. 2020
323 [cited 21 September 2020]. Available from: <https://covid19.who.int/region/amro/country/br>
- 324 (3) [Internet]. Cdn.digital.gob.cl. 2020 [cited 21 September 2020]. Available from:
325 [https://cdn.digital.gob.cl/public_files/Campa%C3%B1as/Corona-](https://cdn.digital.gob.cl/public_files/Campa%C3%B1as/Corona-Virus/Reportes/INFORME_EPI_COVID19_20200330.pdf)
326 [Virus/Reportes/INFORME EPI COVID19_20200330.pdf](https://cdn.digital.gob.cl/public_files/Campa%C3%B1as/Corona-Virus/Reportes/INFORME_EPI_COVID19_20200330.pdf)
- 327 (4) Gautret P, Lagier J, Parola P, Hoang V, Meddeb L, Mailhe M et al.
328 Hydroxychloroquine and azithromycin as a treatment of COVID-19: results of an open-
329 label non-randomized clinical trial. *International Journal of Antimicrobial Agents*.
330 2020;56(1):105949.
- 331 (5) Cavalcanti A, Zampieri F, Rosa R, Azevedo L, Veiga V, Avezum A et al.
332 Hydroxychloroquine with or without Azithromycin in Mild-to-Moderate Covid-19. *New*
333 *England Journal of Medicine*. 2020;.
- 334 (6) Horby P, Mafham M, Linsell L, Bell J, Staplin N, Emberson J et al. Effect of
335 Hydroxychloroquine in Hospitalized Patients with COVID-19: Preliminary results from a
336 multi-centre, randomized, controlled trial. 2020;.
- 337 (7) Tang W, Cao Z, Han M, Wang Z, Chen J, Sun W et al. Hydroxychloroquine in patients with
338 mainly mild to moderate coronavirus disease 2019: open label, randomised controlled trial.
339 *BMJ*. 2020;:m1849.
- 340 (8) Beigel J, Tomashek K, Dodd L, Mehta A, Zingman B, Kalil A et al. Remdesivir for the
341 Treatment of Covid-19 — Preliminary Report. *New England Journal of Medicine*. 2020;.
- 342 (9) Wang Y, Zhang D, Du G, Du R, Zhao J, Jin Y et al. Remdesivir in adults with severe COVID-19:
343 a randomised, double-blind, placebo-controlled, multicentre trial. *The Lancet*.
344 2020;395(10236):1569-1578.
- 345 (10) Cao B, Wang Y, Wen D, Liu W, Wang J, Fan G et al. A Trial of Lopinavir–Ritonavir in Adults
346 Hospitalized with Severe Covid-19. *New England Journal of Medicine*. 2020;382(19):1787-
347 1799.
- 348 (11) RECOVERY Collaborative Group. Dexamethasone in Hospitalized Patients with Covid-19 —
349 Preliminary Report. *New England Journal of Medicine*. 2020;.
- 350 (12) Mair-Jenkins, J., Saavedra-Campos, M., Baillie, J., Cleary, P., Khaw, F., Lim, W., Makki, S.,
351 Rooney, K., Nguyen-Van-Tam, J. and Beck, C., 2014. The Effectiveness of Convalescent Plasma
352 and Hyperimmune Immunoglobulin for the Treatment of Severe Acute Respiratory Infections
353 of Viral Etiology: A Systematic Review and Exploratory Meta-analysis. *Journal of Infectious*
354 *Diseases*, 211(1), pp.80-90.

- 355 (13) Cheng Y, Wong R, Soo Y, Wong W, Lee C, Ng M et al. Use of convalescent plasma therapy
356 in SARS patients in Hong Kong. *European Journal of Clinical Microbiology & Infectious Diseases*.
357 2004;24(1):44-46.
- 358 (14) Yeh K, Chiueh T, Siu L, Lin J, Chan P, Peng M et al. Experience of using convalescent plasma
359 for severe acute respiratory syndrome among healthcare workers in a Taiwan hospital. *Journal*
360 *of Antimicrobial Chemotherapy*. 2005;56(5):919-922.
- 361 (15) Hung I, To K, Lee C, Lee K, Chan K, Yan W et al. Convalescent Plasma Treatment Reduced
362 Mortality in Patients With Severe Pandemic Influenza A (H1N1) 2009 Virus Infection. *Clinical*
363 *Infectious Diseases*. 2011;52(4):447-456.
- 364 (16) Marano G, Vaglio S, Pupella S, Facco G, Catalano L, Liunbruno G. M, & Grazzini G.
365 Convalescent plasma: new evidence for an old therapeutic tool?. *Blood transfusion =*
366 *Trasfusione del sangue*, 2016; 14(2):152–157.
- 367 (17) Mupapa K, Massamba M, Kibadi K, Kuvula K, Bwaka A, Kipasa M et al. Treatment of Ebola
368 Hemorrhagic Fever with Blood Transfusions from Convalescent Patients. *The Journal of*
369 *Infectious Diseases*. 1999;179(s1):S18-S23.
- 370 (18) Duan K, Liu B, Li C, Zhang H, Yu T, Qu J et al. Effectiveness of convalescent plasma therapy
371 in severe COVID-19 patients. *Proceedings of the National Academy of Sciences*.
372 2020;117(17):9490-9496.
- 373 (19) Shen C, Wang Z, Zhao F, Yang Y, Li J, Yuan J et al. Treatment of 5 Critically Ill Patients With
374 COVID-19 With Convalescent Plasma. *JAMA*. 2020;323(16):1582.
- 375 (20) Joyner M, Wright R, Fairweather D, Senefeld J, Bruno K, Klassen S et al. Early safety
376 indicators of COVID-19 convalescent plasma in 5000 patients. *Journal of Clinical Investigation*.
377 2020;130(9):4791-4797.
- 378 (21) Navarrete M, Heining-Mikesch K, Schüler F, Bertinetti-Lapatki C, Ihorst G, Keppler-
379 Hafkemeyer A et al. Upfront immunization with autologous recombinant idiotype Fab
380 fragment without prior cytoreduction in indolent B-cell lymphoma. *Blood*. 2011;117(5):1483-
381 1491.
- 382 (22) Joyner M, Senefeld J, Klassen S, Mills J, Johnson P, Theel E et al. Effect of Convalescent
383 Plasma on Mortality among Hospitalized Patients with COVID-19: Initial Three-Month
384 Experience. 2020;.
- 385 (23) Investigational COVID-19 Convalescent Plasma Guidance for Industry [Internet]. *Fda.gov*.
386 2020 [cited 21 September 2020]. Available from:
387 <https://www.fda.gov/media/136798/download>
- 388 (24) Wu C, Chen X, Cai Y, Xia J, Zhou X, Xu S et al. Risk Factors Associated With Acute
389 Respiratory Distress Syndrome and Death in Patients With Coronavirus Disease 2019
390 Pneumonia in Wuhan, China. *JAMA Internal Medicine*. 2020;180(7):934.

- 391 (25) Consejo Asesor del Ministerio de Salud amplía definición de casos sospechosos y
392 confirmados de COVID-19 [Internet]. Ministerio de Salud – Gobierno de Chile. 2020 [cited 21
393 September 2020]. Available from: [https://www.minsal.cl/consejo-asesor-del-ministerio-de-](https://www.minsal.cl/consejo-asesor-del-ministerio-de-salud-amplia-definicion-de-casos-sospechosos-y-confirmados-de-covid-19/)
394 [salud-amplia-definicion-de-casos-sospechosos-y-confirmados-de-covid-19/](https://www.minsal.cl/consejo-asesor-del-ministerio-de-salud-amplia-definicion-de-casos-sospechosos-y-confirmados-de-covid-19/)
- 395 (26) Coronavirus Disease 2019 (COVID-19) | 2020 Interim Case Definition, Approved August 5,
396 2020 [Internet]. Wwn.cdc.gov. 2020 [cited 21 September 2020]. Available from:
397 [https://www.cdc.gov/nndss/conditions/coronavirus-disease-2019-covid-19/case-](https://www.cdc.gov/nndss/conditions/coronavirus-disease-2019-covid-19/case-definition/2020/08/05/)
398 [definition/2020/08/05/](https://www.cdc.gov/nndss/conditions/coronavirus-disease-2019-covid-19/case-definition/2020/08/05/)
- 399 (27) Simpson S, Kay F, Abbara S, Bhalla S, Chung J, Chung M et al. Radiological Society of North
400 America Expert Consensus Statement on Reporting Chest CT Findings Related to COVID-19.
401 Endorsed by the Society of Thoracic Radiology, the American College of Radiology, and RSNA.
402 Radiology: Cardiothoracic Imaging. 2020;2(2):e200152.
- 403 (28) Lee L, Cazier J, Starkey T, Briggs S, Arnold R, Bisht V et al. COVID-19 prevalence and
404 mortality in patients with cancer and the effect of primary tumour subtype and patient
405 demographics: a prospective cohort study. The Lancet Oncology. 2020;.
- 406 (29) Liang W, Guan W, Chen R, Wang W, Li J, Xu K et al. Cancer patients in SARS-CoV-2
407 infection: a nationwide analysis in China. The Lancet Oncology. 2020;21(3):335-337.
- 408 (30) Addeo A, Friedlaender A. Cancer and COVID-19: Unmasking their ties. Cancer Treatment
409 Reviews. 2020;88:102041.
- 410 (31) 4. Tremblay D, Seah C, Schneider T, Bhalla S, Feld J, Naymagon L et al. Convalescent
411 Plasma for the Treatment of Severe COVID-19 Infection in Cancer Patients. Cancer Medicine.
412 2020;.
- 413 (32) 5. Santa Cruz R, Villarejo F, Figueroa A, Cortés-Jofré M, Gagliardi J, Navarrete M. Mortality
414 in Critically Ill Elderly Individuals Receiving Mechanical Ventilation. Respiratory Care.
415 2019;64(4):473-483.
- 416 (33) 6. Baud D, Qi X, Nielsen-Saines K, Musso D, Pomar L, Favre G. Real estimates of mortality
417 following COVID-19 infection. The Lancet Infectious Diseases. 2020;20(7):773.
- 418 (34) Pandey S, Vyas G. Adverse effects of plasma transfusion. Transfusion. 2012;52:65S-79S.
- 419 (35) Vlaar A, Binnekade J, Prins D, Hofstra J, Schultz M, Juffermans N. Risk Factors for the Onset
420 of Transfusion Related Acute Lung Injury (TRALI) in Critically Ill Patients – A Retrospective
421 Nested Case Control Study. C54 ALI/ARDS: DIAGNOSIS AND OUTCOMES. 2009;.
- 422 (36) Hawkins J, Aster R, Curtis B. Post-Transfusion Purpura: Current Perspectives. Journal of
423 Blood Medicine. 2019;Volume 10:405-415.
- 424 (37) Xu P, Zhou Q, Xu J. Mechanism of thrombocytopenia in COVID-19 patients. Annals of
425 Hematology. 2020;99(6):1205-1208.

426 (38) 7. Liu S, Lin H, Baine I, Wajnberg A, Gumprecht J, Rahman F et al. Convalescent plasma
427 treatment of severe COVID-19: a propensity score–matched control study. *Nature Medicine*.
428 2020;

429 (39) 8. Li L, Zhang W, Hu Y, Tong X, Zheng S, Yang J et al. Effect of Convalescent Plasma
430 Therapy on Time to Clinical Improvement in Patients With Severe and Life-threatening COVID-
431 19. *JAMA*. 2020;324(5):460.

Table 1. Baseline demographics and clinical characteristics

Age	
Age – yr (median, IQR)	59.0 (49.8 - 67.0)
Sex – no. (%)	
Male	135 (70.3)
Female	57 (29.7)
Ethnic group – no. (%)	
Hispanic or Latino	180 (93.8)
Caucasian	12 (6.2)
Severity – no. (%)	
Severe	174 (90.6)
Non-severe with RF	18 (9.4)
O₂ requirement – no. (%)	
No oxygen	20 (10.4)
Oxygen	172 (89.6)
Ventilatory support – no. (%)	
Mechanic ventilation	79 (41.1)
No mechanic ventilation	113 (58.9)
Ventilatory support type – no. (%)	
Invasive ventilation (IV)	59 (30.7)
Non-invasive ventilation (NIV)	20 (10.4)
O₂ support device – no. (%)	
High-flow nasal cannula oxygenation	35 (18.2)
Oxygen face mask	11 (5.7)
Nasal oxygen cannula with prongs	47 (24.5)
Hospitalization unit (at enrollment) – no. (%)	
Critical care unit	138 (71.9)
Basic room	54 (28.1)
Comorbidities – no. (%)	
Hypertension	59 (30.7)
Diabetes	56 (29.2)
Obesity	41 (21.4)
Cancer	22 (11.5)
EPOC	10 (5.2)
Coronary cardiopathy	5 (2.6)
HIV/AIDS	0 (0)
Blood type – no. (%)	
O	113 (58.9)
A	58 (30.2)
B	19 (9.9)
AB	2 (1.0)
SOFA	
Sofa score at enrolment (median, IQR)	3 (2-5)
PAFI	
PaO ₂ / FiO ₂ (median, IQR)	182 (127-273)

Table 2. Seven and thirty-day mortality characteristics

	Seven-day Mortality			P-value	Thirty-day Mortality			P-value
	Sample, No	Events, No	Estimate, 95% CI		Sample, No	Events, No	Estimate, 95% CI	
Overall Mortality	192	11	5.7% (2.9%, 10.0%)		192	31	16.1% (11.2%, 22.1%)	
Sex				0,063				0,732
Female	57	6	10.5% (4.0%, 21.5%)		57	10	17.5% (8.7%, 29.9%)	
Male	135	5	3.7% (1.2%, 8.4%)		135	21	15.6% (9.9%, 22.8%)	
Age				0,071				0,019
18-44	32	1	3.1% (0.1%, 16.2%)		32	2	6.2% (0.8%, 20.8%)	
45-65	100	3	3.0% (0.6%, 8.5%)		100	13	13.0% (7.1%, 21.2%)	
65+	60	7	11.7% (4.8%, 22.6%)		60	16	26.7% (16.1%, 39.7%)	
Days to transfusion since symptoms				0,060				0,707
<=7 days	87	8	9.2% (4.1%, 17.3%)		87	15	17.2% (10.0%, 26.8%)	
8+ days	105	3	2.9% (0.6%, 8.1%)		105	16	15.2% (9.0%, 23.6%)	
Days to transfusion since hospitalization				0,358				0,237
<=3 days	129	6	4.7% (1.7%, 9.8%)		129	18	14.0% (8.5%, 21.2%)	
3+ days	63	5	7.9% (2.6%, 17.6%)		63	13	20.6% (11.5%, 32.7%)	
Ventilation				0,740				0,037
No IV/NIV	113	7	6.2% (2.5%, 12.3%)		113	13	11.5% (6.3%, 18.9%)	
IV/NIV	79	4	5.1% (1.4%, 12.5%)		79	18	22.8% (14.1%, 33.6%)	
O ₂ support device				0,254				0,374
IV	59	1	1.7% (0.0%, 9.1%)		59	13	22.0% (12.3%, 34.7%)	
NIV	20	3	15.0% (3.2%, 37.9%)		20	5	25.0% (8.7%, 49.1%)	
HFNC	35	2	5.7% (0.7%, 19.2%)		35	5	14.3% (4.8%, 30.3%)	
O ₂ face mask	11	0	0.0% (0.0%, 28.5%)		11	0	0.0% (0.0%, 28.5%)	
NOC	47	4	8.5% (2.4%, 20.4%)		47	6	12.8% (4.8%, 25.7%)	
No O ₂	20	1	5.0% (0.1%, 24.9%)		20	2	10.0% (1.2%, 31.7%)	
Study Arm				0,166				0,754
Neoplasm patient w/ severity criteria	15	3	20.0% (4.3%, 48.1%)		15	3	20.0% (4.3%, 48.1%)	
Neoplasm patient w/o severity criteria w/ risk factors	7	0	0.0% (0.0%, 41.0%)		7	0	0.0% (0.0%, 41.0%)	
Non-Neoplasm patient w/ severity criteria	159	8	5.0% (2.2%, 9.7%)		159	27	17.0% (11.5%, 23.7%)	
Non-Neoplasm patient w/o severity criteria w/ risk factor	11	0	0.0% (0.0%, 28.5%)		11	1	9.1% (0.2%, 41.3%)	

Table 3. Risk Factors Associated with Mortality Using a Cox Regression Model.

	Crude HR (95% CI)	P-value	Adjusted HR (95% CI)	P-value
Sex				
Female	1 (Ref)		1 (Ref)	
Male	0.78 (0.40-1.53)	0,471	0.77 (0.38-1.57)	0,471
Age				
18-44	1 (Ref)		1 (Ref)	
45-65	2.52 (0.58-11.0)	0,221	2.10 (0.47-9.32)	0,330
65+	6.67 (1.56-28.5)	0,010	6.30 (1.45-27.32)	0,014
Days to transfusion since symptoms				
<=7 days	1 (Ref)		1 (Ref)	
8+ days	1.00 (0.53-1.89)	0,991	0.73 (0.34-1.57)	0,424
Days to transfusion since hospitalization				
<=3 days	1 (Ref)		1 (Ref)	
4+ days	1.60 (0.84-3.04)	0,155	1.31 (0.60-2.82)	0,496
Ventilation				
No IV/NIV	1 (Ref)		1 (Ref)	
IV/NIV	2.30 (1.20-4.40)	0,012	2.72 (1.24-5.54)	0,006

Table 4. Adverse Events Related to the Use of Convalescent Plasma (CP)

Adverse Event	Any Grade	Grade 3, 4 or 5*	SAE	Event/ Patient	Event / Transfusion
TRALI	3	3	3	1.56 % (3/192)	0.80 % (3/373)
Thrombocytopenia	1	1	1	0.52 % (1/192)	0.27% (1/373)
Fever	5	0	0	2.60% (5/192)	1.34% (5/373)
Skin - Rash	2	0	0	1.04% (2/192)	0.53% (2/373)
Total AE	11	4	4	5.72% (11/192)	2.94% (11/373)
Total SAE				2.08% (4/192)	1.07% (4/373)
Treatment related death				0% (0/192)	0% (0/373)

*CTCAE v5.0 ; SAE = Serious adverse event; TRALI = Transfusion related acute lung injury; AE = Adverse Events

Table 5. Adverse Events Registered During the Study

Adverse Events	Any Grade	Patients with AE	events per patient	AE Grade 3, 4 or 5	Patients with AE Grade 3, 4 or 5	events per patient
	n	n (%)	(range)	n	n (%)	(range)
Infectious	62	43 (22.3)	(1-4)	33	24 (12.5)	(1-3)
Respiratory	20	18 (9.4)	(1-2)	6	6 (3.1)	1
Renal	17	14 (7.3)	(1-2)	10	10 (5.2)	1
Cardiac	17	16 (8.3)	(1-2)	3	3 (1.6)	1
Gastrointestinal	16	11 (5.7)	(1-2)	1	1 (0.5)	1
Vascular-Thromboembolism	11	11 (5.7)	1	5	5 (2.6)	1
Neurologic	8	8 (4.2)	1	4	4 (2.1)	1
Fever	5	5 (2.6)	1	0	0 (0)	1
Skin	4	4 (2.1)	1	2	2 (1.0)	1
Hepatic	3	3 (1.6)	1	0	0 (0)	1
Hematologic	2	2 (1.0)	1	1	1 (0.5)	1
Reumatologic	1	1 (0.5)	1	0	0 (0)	1
Total	166	136 (70.8)	(1-4)	65	56 (29.2)	(1-3)

AE = Adverse Event

Figure 1. Study Flow Diagram

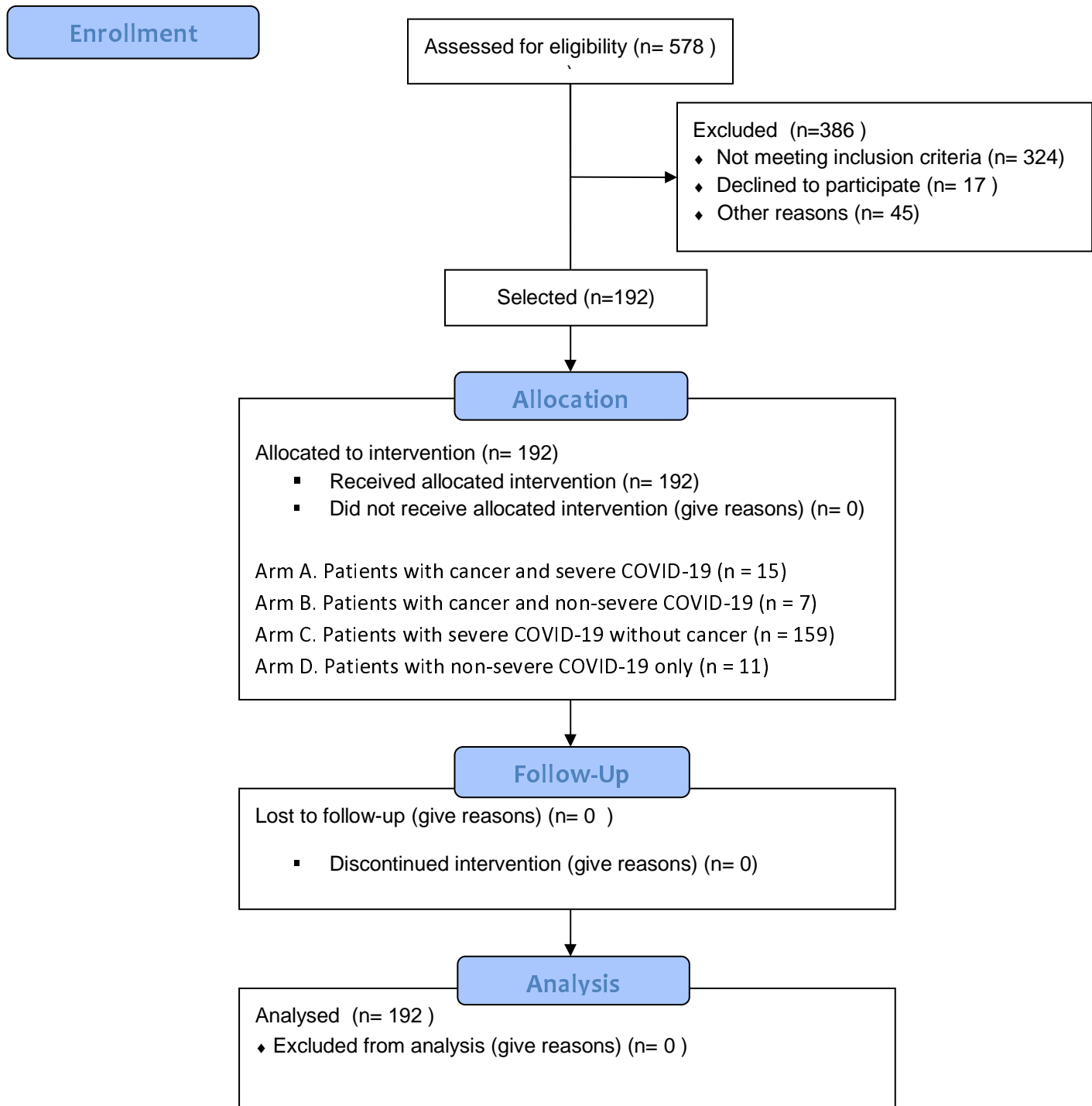


Figure 2. Time from enrollment to death. A Kaplan-Meier estimate of overall survival.

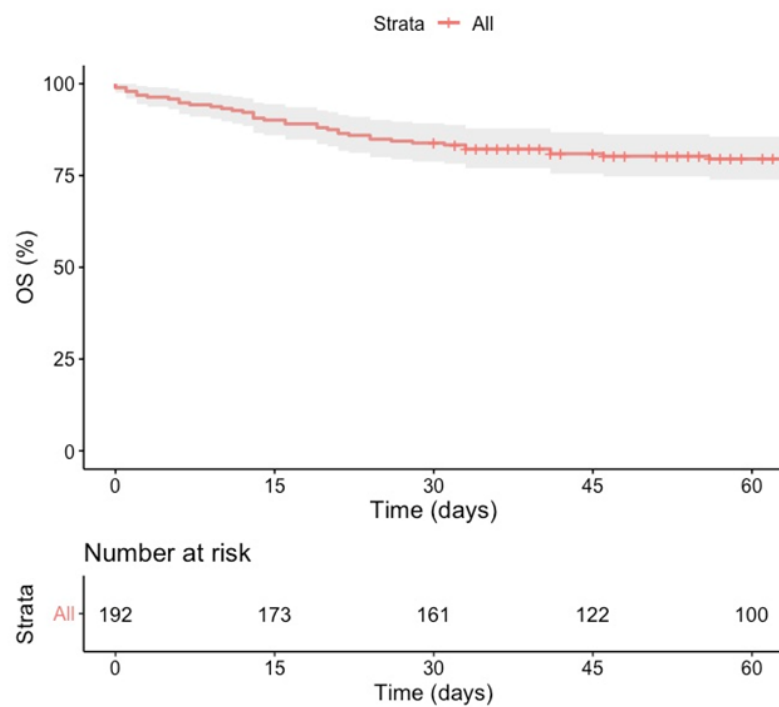


Figure 3. Overall Survival according to study arm. A Kaplan-Meier estimate of the overall survival between the study groups. (A) Patients with cancer and severe COVID-19. (B) Patients with cancer and non-severe COVID-19. (C) Patients with severe COVID-19 without cancer. (D) Patients with non-severe COVID-19 only.

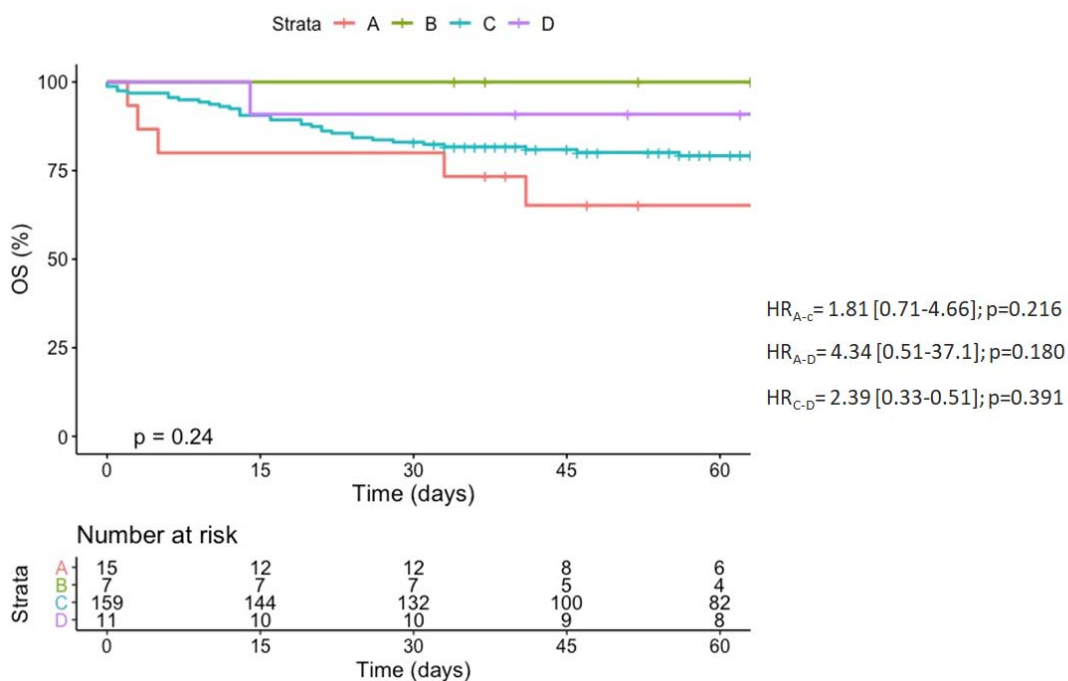


Figure 4. Overall survival by age. A Kaplan-Meier estimate of overall survival according to age group.

