

Running head: LBP among working Ethiopian population

Prevalence of low back pain among working Ethiopian population: A systematic review and meta-analysis

Amanuel Godana Arero¹, Godana Arero², Shimels Hussien Mohammed³, Sahar Eftekhari⁴

1. Students' Scientific Research Center ,Tehran University of Medical Sciences, Tehran, Iran
2. Department of Public Health, Adama Hospital Medical College, Adama, Ethiopia
3. Department of Community Nutrition, School of Nutritional Sciences and Dietetics, Tehran University of Medical Sciences, Tehran, Iran
4. School of Medicine- International Campus, Tehran University of Medical Sciences (TUMS), Tehran, Iran

LBP among working Ethiopian population

Abstract

Background and objective

Low back pain (LBP) as musculoskeletal disorder remains a common health problem and is one of the most prevalent occupational injuries affecting adults living in both developed and developing countries. To increase the power and improve the estimates of the prevalence of LBP among the working Ethiopian population, a comprehensive meta-analysis was carried out.

Methods

A comprehensive systematic literature search was conducted in multiple international electronic bibliographic databases such as Web of Science, Pub Med, EMBASE, Scopus, and Google Scholar. Population-based Studies into the Prevalence of LBP among the working population living in Ethiopia were included. Methodological quality for included studies was appraised using an adapted tool. Meta-analyses, Meta-regression, and sensitivity analysis were conducted. Funnel plot symmetry visualization followed by Begg's rank correlation and Egger's regression asymmetry test methods were performed to detect the existence of publication bias. Heterogeneity between studies was assessed by using the Cochrane Q and I²-statistics.

Results

In all 719 articles were identified and 13 articles with 6513 participants met the inclusion criteria for meta-analyses after filtering. The pooled point and twelve-month prevalence of LBP among working Ethiopian population was 49% (95% CI 40; 58) and 56% (95% CI 49; 62) respectively.

LBP among working Ethiopian population

Conclusion

The results showed a high prevalence of LBP among working Ethiopian population, especially among Teachers. We believe that Prevention strategies addressing the early onset of LBP among the working population would most likely be the answer to the burden of LBP on future economies in Ethiopia.

Keywords; Low back pain, Epidemiology, Occupational injury, Working population, Ethiopia

Introduction

It is believed that Lower back pain (LBP) is one of the most prevalent musculoskeletal conditions affecting adults living in both developed and developing nations (1-4) . Broadly defined as pain or discomfort in the lumbar region of the spine between the lower costal margins and the inferior gluteal folds with or without leg pain (i.e., sciatica) (1-4). LBP remains one of the most common health problems that 50–80% of adults of working age population experience at some point in the course of their lifetime and its prevalence or incidence has been found to increase with an increase in age(3, 4). It is estimated that 46% of workers in European countries(5) and about 20% of workers in US (6, 7) report LBP at any given time. LBP is the major cause of work absence and activity restriction throughout much of the world, imposing a high economic burden on individuals, families, communities, industries and governments(8, 9).Direct costs for LBP in US are estimated between \$20 billion and \$98 billion, with indirect annual costs included the total cost estimates are as high as \$200 billion(10, 11).

According to the Global Burden of Disease (GBD) 2010 study, the overall burden of LBP arising from workplace exposure was estimated at 21.8 million [95% CI (14.5–30.5)] disability-adjusted

LBP among working Ethiopian population

life years (DALYs) and is currently, the sixth-highest burden and is the cause of more years lived with disability (YLDs) globally than any other condition (12-14). Despite the fact that the literature on the prevalence of low back pain is accumulating, but for the most part studies are restricted and only available for developed countries, which comprise less than 20% of the world's population. Understanding the prevalence of LBP in the working population in developing countries such as Ethiopia may assist in the understanding of the global LBP burden and its management. Thus, the purpose of this review aims to systematically appraise published Disease prevalence studies conducted in Ethiopia and estimate LBP prevalence in the working population, in order to ascertain whether LBP is of concern in Ethiopia, as it is globally.

Methods

This systematic review and meta-analysis was conducted Based on the recommendations of Meta-analysis of Observational Studies in Epidemiology guideline(15), and PRISMA(Preferred Reporting Items for Systematic Reviews and Meta-Analysis) guideline (16).The work was registered in PROSPERO(protocol registration number: CRD42020188523) .

Characteristics of studies

All studies conducted in the field of the prevalence of LBP in Ethiopia, regardless of the publication period, we reviewed and included in our study. Studies could report on the prevalence of musculoskeletal disorders as a whole, yet had to provide subgroup data for the prevalence of LBP. Subjects included in the studies could be any race, gender, and age. All Studies included are published in English.

LBP among working Ethiopian population

Data sources

A systematic literature search was conducted in multiple international electronic bibliographic databases such as Web of Science, Pub Med, EMBASE, Scopus, and Google Scholar until 2020. The main keywords used for this search were: low back pain, musculoskeletal pain, occupational injury, prevalence, and Ethiopia. It should also be noted that articles published in journals and/or Dissertations/theses, conference proceedings, reports, commentaries/letters, and other grey literature and all other references to the relevant articles were included in our search. The First Reviewer (AGA) searched independently and the second reviewer (GA) checked the finding.

Study selection

Inclusion criteria dealt with cross-sectional studies that present the prevalence of LBP among Ethiopia working population and conducted in Ethiopia. Exclusion criteria included irrelevant studies, articles without adequate data regarding observations, studies that linked LBP with other diseases, duplicate studies and Dissertations, conference proceedings, commentaries/letters, and other grey literature were excluded from this review.

Data extraction and study quality assessment

Data extraction and quality assessment were done by two independent reviewers (AGA and GA). Cases of a discrepancy were resolved by consensus between two reviewers. For all included articles, a form was designed using a data extraction sheet in EXCEL software that include the following variables: Author names, city/region, study design, year of publication, study setting, data collection period, population, age, gender, working experience, Body mass index, type of standard questionnaire, sample size, responsive rate, the prevalence of LBP, and study quality score. The methodological quality critical appraisal tool used in a systematic and meta-analysis

LBP among working Ethiopian population

into the prevalence of LBP in Africa (17) was adapted to this review. The An 80% cut-off was considered appropriate based on the fact that no subminimum criteria were applied due to the heterogeneous nature of LBP data and that the average methodological score of all studies was 83%.

Analytical approach

From the Extracted data, the pooled point and twelve-month prevalence of LBP among working for Ethiopia population, as well as the 95% confidence interval (CI), were calculated for conducting meta-analysis. Heterogeneity between studies was assessed using the Cochrane Q and I^2 -statistics, which quantifies the proportion of variance explained by between-study heterogeneity. According to Higgins et al.[26] Heterogeneity was measured by I^2 and divided into four categories, $I^2 < 25\%$, 25–49%, 50–75%, and $I^2 > 75\%$ represents no, low, moderate, and high levels of heterogeneity, respectively. Sensitivity analysis was performed using a random-effect model. Funnel plot symmetry visualization followed by Begg's rank correlation and Egger's regression asymmetry test methods were performed to detect the existence of publication bias. The point and twelve-month prevalence estimate of each study with a 95% confidence interval were used to estimate pooled prevalence using the Der Simonian and Laird's random-effects model. Furthermore, to assess the possible sources of variation, univariate meta-regression was conducted based on a year of publications. Data analysis was conducted using STATA software version 15.0. A significance level of 0.05 was considered for the P-value.

LBP among working Ethiopian population

Result

The comprehensive search for published epidemiological research in the musculoskeletal disorders in general regardless of etiology and LBP specifically conducted in Ethiopia regardless of period and yielded 719 hits. As the main objective of our current review focused solely on the prevalence LBP, studies which reported musculoskeletal disorders other than LBP and LBP related to underlying diseases (e.g. Rheumatology, Cancer...) were excluded. Studies that are not specifically conducted to report LBP but reported LBP prevalence were included. After removing duplicates and screening of titles and articles, 43 studies were selected for full-text review. Consequently, 13 eligible studies were included in this review (18-30). The literature search, selection, and reviewing process are depicted in the PRISMA flow diagram Figure 1.

General description of the studies reviewed

Descriptive data extracted from the thirteen included studies are reported as an overview summary (Table 1). The studies were published from 2013-2020. The sample size of the studies ranged from 300 to 824 individuals. Altogether, the thirteen studies included 6513 unique individuals, of whom 60% were males and 40% females. All studies reported response rate. The response rate varied from 90.4%-100% in the included studies. The mean response rates were 95.38%. Except for two studies (29, 30) which included only male subjects, the rest included both genders. The recall periods for LBP are reported as point and twelve-month prevalence. LBP prevalence is usually reported as the point or period prevalence. Point prevalence is measured at a single point in time (i.e., the number of people reporting LBP on the day of a survey) and Period prevalence is measured over a specified period, usually six months or 1 year (i.e., those people who report having had LBP in the past six-months or twelve-months) (31).

LBP among working Ethiopian population

Methodological appraisal

The methodological quality scores of the included studies are reported in Table 2. All studies were descriptive with a quality score of higher than 80%. Ratings for each study were compared between the two evaluators, AGA and GA, with disagreement resolved by consensus.

Prevalence of LBP

Three studies reported on point prevalence of LBP (18, 20, 21). The point prevalence of LBP was estimated at 49% (95% CI 40; 58). Heterogeneity between the point prevalence of LBP was assessed and there was high heterogeneity ($\chi^2=230.5$, d.f. =2, $p=0.001$, $I^2=93.44\%$). The summary analyses for point prevalence of LBP is depicted in Figure 2. Twelve studies reported on the twelve-month prevalence of LBP (19-30). The twelve-month prevalence of LBP was estimated at 56% (95% CI 49; 62). Heterogeneity between the twelve-month prevalence of LBP was assessed and there was high heterogeneity ($\chi^2=298.06$, d.f. =11, $p=0.001$, $I^2=96.3\%$). The summary analysis for the twelve-month prevalence of LBP is depicted in Figure 3.

Socioeconomic and behavioral factors associated with low back pain

All studies included in this review (18-30) provided sufficient data to determine associations with potential risk factors. The main association factors were directly extracted from these publications and summarized in Table 3.

LBP among working Ethiopian population

Sensitivity analysis

Sensitivity analysis of LBP among the working Ethiopia population was performed using a random-effect model. Sensitivity analysis was carried out by excluding each study step-by-step from the meta-analysis and comparing point prevalence estimate before and after removing a single study. Accordingly, removing a single study did not alter the pooled prevalence estimate considerably, with sensitivity analysis ranging from 53.75% (when(23) was removed) and 57.34% (when(24) was removed) Figure 4.

Meta-regression

Meta-regression analysis showed that there was no significant statistical relationship between the year of publication and the prevalence of the LBP (P-value = 0.345) Figure 5.

Publication bias

The funnel plot symmetry visual inspection was used to assess the presence of publication bias qualitatively. This identified that the publication bias was not significant (figure.6). Besides, the absence of publication was statistically confirmed by Egger's weighted regression test (bias coefficient (B) = -11.87, (95%CI = -32.5–8.76%; p=0.229) and Begg's rank test (p-value of bias= 0.244). Therefore, we did not perform Trim and Fill analysis to adjust the final pooled prevalence estimate.

LBP among working Ethiopian population

Discussion

Meta-analyses of the observational data collected from the eligible studies provide a summary estimate of the point and twelve-month prevalence. Among those studies that reported point prevalence, LBP prevalence ranged from 44% to 58%. And among those provided twelve-month prevalence, LBP prevalence ranged from 36% to 75%.

Extracted data showed that Teachers had the highest rate in both point and twelve-month prevalence (21, 23), possibly due to prolong standing during sessions in addition to other potential risk factors. Point prevalence and twelve-month prevalence of LBP in working Ethiopia population was found to be higher than recently reported estimates of global LBL prevalence in the general population (12, 33, 34). A systematic review that included general population studies published in 2012 reported the global prevalence of LBP that was designed from a total of 165 studies conducted from 54 countries around the globe, published between 1980 and 2009(33). In our review, the point prevalence of LBP was estimated at 49% (95% CI 40; 58), which is considerably higher than both the Global LBP prevalence estimate (18.3%) reported by Hoy et al. (33) and the Prevalence of LBP among Africans estimate (39%) reported by Morris et al (17). Twelve-month prevalence of LBP was estimated at 56% (95% CI 49; 62), which is substantially higher than the Global LBP prevalence estimate (38.5%) reported by Hoy et al. (33) but relatively equal to the prevalence of LBP among Africans estimate (57%) reported by Morris et al (17).

The summary estimates from our current review were compared in particular to North American and Western European countries. It was found that the point LBP prevalence was considerably higher than estimates provided for Canada (28.7%), Denmark (12–13.7%) and Sweden (23.2%),

LBP among working Ethiopian population

and was comparable to Germany (39.2%) and Belgium (33%)(34). Twelve-month prevalence of LBP was considerably higher than Spain (20%), and on par with Denmark (56%) and Ukraine (50.3%) (34). The pooled prevalence LBP for both point and twelve-month prevalence were compared to particularly LBP prevalence among the working population reported in developed countries such as the United States of America (25.7%), Canada (28%) and United Kingdom (18%) (35), and our estimate found to be much higher than these countries. The findings of our review, therefore, reiterate the fact that LBP is a burden and is therefore a major public health concern among developing nations (12, 36, 37). Despite the high burden, LBP lacks enough attention amid infectious diseases and epidemics such as HIV/AIDS in developing countries (38). The successful development and implementation of strategies and policies to address the burden of LBP among the working population in Ethiopia or countries with emerging economies is therefore necessary (17, 39).

The review process highlighted a number of challenges related to conducting and pooling relevant epidemiologic data. Some of these study weaknesses are: First, significant heterogeneity has been noted among included studies. Thus, the pooled prevalence estimate should be interpreted cautiously. Second, only the English language was used to retrieve studies. Third, many of Ethiopian LBP studies are published in local journals or as a postgraduate thesis and not all Ethiopian universities may have information technology systems which allow online access to their postgraduate thesis, which leads to difficulty in publishing, as well as access and retrieving such publications. However, this study has several strengths that need to be mentioned: I) PRISMA guideline has been strictly followed, II) Large sample sizes have been included to estimate pooled prevalence, III) Publication bias assessment and sensitivity analysis have also

LBP among working Ethiopian population

been conducted to ensure the robustness of study, IV) Evaluation of possible source of heterogeneity and trend analysis was also done.

Conclusion

The results showed the high prevalence of LBP among working Ethiopian population, especially among Teachers. We believe that Prevention strategies addressing the early onset of LBP among the working population would most likely be the answer to the burden of LBP on future economies in Ethiopia

Abbreviations

LBP: Low back pain

GBD: Global Burden of Disease

DALYs: Disability adjusted life years

YLDs: Years lived with disability

HIV/AIDS: Human Immunodeficiency Virus/Acquired Immune Deficiency Syndrome

CI: Confidence interval

Declarations

Ethics approval and consent to participate

LBP among working Ethiopian population

N/A

Consent for publication

N/A

Availability of data and materials

All data are included within the manuscript.

Competing interests

The authors declared no competing interests

Funding

This research received no specific grant from any funding agency in public, commercial or not for profit sectors.

Acknowledgements

Tehran University of medical sciences-International campus

Reference

1. Hoy D, March L, Brooks P, Woolf A, Blyth F, Vos T, et al. Measuring the global burden of low back pain. *Best practice & research Clinical rheumatology*. 2010;24(2):155-65.
2. Manchikanti L. Epidemiology of low back pain. *Pain physician*. 2000;3(2):167-92.
3. Rubin DI. Epidemiology and risk factors for spine pain. *Neurologic clinics*. 2007;25(2):353-71.
4. Volinn E. The epidemiology of low back pain in the rest of the world: a review of surveys in low- and middle-income countries. *Spine*. 1997;22(15):1747-54.
5. Parent-Thirion A, Vermeylen G, van Houten G, Lyly-Yrjänäinen M, Biletta I, Cabrita J. Eurofound. Fifth European working conditions survey. Luxembourg: Publications Office of the European Union. 2012.

LBP among working Ethiopian population

6. These MS, Hegmann KT, Wood EM, Garg A, Moore JS, Kapellusch J, et al. Prevalence of low back pain by anatomic location and intensity in an occupational population. *BMC musculoskeletal disorders*. 2014;15(1):283.
7. These MS, Hegmann KT, Wood EM, Garg A, Moore JS, Kapellusch JM, et al. Low-back pain ratings for lifetime, 1-month period, and point prevalences in a large occupational population. *Human factors*. 2014;56(1):86-97.
8. Balague F, Troussier B, Salminen J. Non-specific low back pain in children and adolescents: risk factors. *European spine journal*. 1999;8(6):429-38.
9. Taimela S, Kujala UM, Salminen JJ, Viljanen T. The prevalence of low back pain among children and adolescents: a nationwide, cohort-based questionnaire survey in Finland. *Spine*. 1997;22(10):1132-6.
10. Waddell G. Low back pain: a twentieth century health care enigma. *Spine*. 1996;21(24):2820-5.
11. Katz JN. Lumbar disc disorders and low-back pain: socioeconomic factors and consequences. *JBJS*. 2006;88(suppl_2):21-4.
12. Hoy D, March L, Brooks P, Blyth F, Woolf A, Bain C, et al. The global burden of low back pain: estimates from the Global Burden of Disease 2010 study. *Annals of the rheumatic diseases*. 2014;73(6):968-74.
13. Driscoll T, Jacklyn G, Orchard J, Passmore E, Vos T, Freedman G, et al. The global burden of occupationally related low back pain: Estimates from the Global Burden of Disease 2010 study. *Annals of the rheumatic diseases*. 2014;73.
14. Fatoye F, Gebrye T, Odeyemi I. Real-world incidence and prevalence of low back pain using routinely collected data. *Rheumatology international*. 2019;39(4):619-26.
15. Stroup DF, Berlin JA, Morton SC, Olkin I, Williamson GD, Rennie D, et al. Meta-analysis of observational studies in epidemiology: a proposal for reporting. *Jama*. 2000;283(15):2008-12.
16. Moher D, Liberati A, Tetzlaff J, Altman DG, Group P. Preferred reporting items for systematic reviews and meta-analyses: the PRISMA statement. *PLoS med*. 2009;6(7):e1000097.
17. Morris LD, Daniels KJ, Ganguli B, Louw QA. An update on the prevalence of low back pain in Africa: a systematic review and meta-analyses. *BMC Musculoskeletal Disorders*. 2018;19(1):196.
18. Abebaw T-A, Weldegebriel MK, Gebremichael B, Abaerei AA. Prevalence and Associated Factors of Low Back Pain Among Teachers Working at Governmental Primary Schools in Addis Ababa, Ethiopia: A Cross Sectional Study. *Biomedical Journal*. 2018;1:6.
19. Abebe AD, Gebrehiwot EM, Lema S, Abebe TW. Prevalence of low back pain and associated risk factors among Adama Hospital Medical College Staff, Ethiopia. *European Journal of Preventive Medicine*. 2015;3(6):188-92.
20. Belay MM, Worku A, Gebrie SA, Wamisho B. Epidemiology of low back pain among nurses working in public hospitals of Addis Ababa, Ethiopia. *East and Central African Journal of Surgery*. 2016;21(1):113-31.
21. Beyen TK, Mengestu MY, Zele YT. low back pain and associated factors among teachers in Gondar Town, North Gondar, Amhara Region, Ethiopia. *Occup Med Health Aff*. 2013;1(5):1-8.
22. Gebreyesus T, Weldemariam S, Fasika S, Abebe E, Kifle M. Prevalence and Associated Factors of Low Back Pain among School Teachers in Mekelle City, Northern Ethiopia, 2016: A Cross Sectional Study. 2019.
23. Kebede A, Abebe SM, Woldie H, Yenit MK. Low Back Pain and Associated Factors among Primary School Teachers in Mekele City, North Ethiopia: A Cross-Sectional Study. *Occupational therapy international*. 2019;2019:3862946.
24. Lette A, Ambelu A, Getahun T, Mekonen S. A survey of work-related injuries among building construction workers in southwestern Ethiopia. *International Journal of Industrial Ergonomics*. 2018;68:57-64.

LBP among working Ethiopian population

25. Mekonnen TH. The magnitude and factors associated with work-related back and lower extremity musculoskeletal disorders among barbers in Gondar town, northwest Ethiopia, 2017: A cross-sectional study. *Plos one*. 2019;14(7):e0220035.
26. Regassa T, Lema T, Garmomsa G. Work Related Musculoskeletal Disorders and Associated Factors among Nurses Working in Jimma Zone Public Hospitals, South West Ethiopia. *Occup Med Health Aff*. 2018;6(279):2.
27. Tefera Zele Y, Ahmed AN, Wondie Y, Yilma TM, Gebreegziabher HW, Weldegebreal MK, et al. Prevalence of low back pain and associated factors among young workers in traditional weaving of the informal sectors, Central and Southern Ethiopia. *Vulnerable Children and Youth Studies*. 2020;15(1):48-59.
28. Wami SD, Abere G, Dessie A, Getachew D. Work-related risk factors and the prevalence of low back pain among low wage workers: results from a cross-sectional study. *BMC Public Health*. 2019;19(1):1072.
29. Wanamo ME, Abaya SW, Aschalew AB. Prevalence and risk factors for low back pain (LBP) among Taxi Drivers in Addis Ababa, Ethiopia: A community based cross-sectional study. *Ethiopian Journal of Health Development*. 2017;31(4):244-50.
30. Yosef T, Belachew A, Tefera Y. Magnitude and Contributing Factors of Low Back Pain among Long Distance Truck Drivers at Modjo Dry Port, Ethiopia: A Cross-Sectional Study. *J Environ Public Health*. 2019;2019:6793090.
31. Loney PL, Stratford PW. The prevalence of low back pain in adults: a methodological review of the literature. *Physical therapy*. 1999;79(4):384-96.
32. Millennium WSGotBoMCatSotN, Organization WH. The burden of musculoskeletal conditions at the start of the new millennium: report of a WHO Scientific Group: World Health Organization; 2003.
33. Hoy D, Bain C, Williams G, March L, Brooks P, Blyth F, et al. A systematic review of the global prevalence of low back pain. *Arthritis & Rheumatism*. 2012;64(6):2028-37.
34. Hoy D, Brooks P, Blyth F, Buchbinder R. The epidemiology of low back pain. *Best practice & research Clinical rheumatology*. 2010;24(6):769-81.
35. Yang H, Haldeman S, Lu M-L, Baker D. Low back pain prevalence and related workplace psychosocial risk factors: a study using data from the 2010 National Health Interview Survey. *Journal of manipulative and physiological therapeutics*. 2016;39(7):459-72.
36. March L, Woolf AD. The global burden of musculoskeletal conditions-why is it important? *Best practice & research Clinical rheumatology*. 2010;24(6):721.
37. Woolf AD, Erwin J, March L. The need to address the burden of musculoskeletal conditions. *Best practice & research Clinical rheumatology*. 2012;26(2):183-224.
38. Froud R, Patterson S, Eldridge S, Seale C, Pincus T, Rajendran D, et al. A systematic review and meta-synthesis of the impact of low back pain on people's lives. *BMC musculoskeletal disorders*. 2014;15(1):50.
39. Woolf AD, Brooks P, Åkesson K, Mody GM. Prevention of musculoskeletal conditions in the developing world. *Best Practice & Research Clinical Rheumatology*. 2008;22(4):759-72.

LBP among working Ethiopian population

Table and figures

Table 1: Study characteristics

Author	City/region	Study design	Setting	Tool	Population	Sample size	Age	Gender
Lette at el.(2018)	Jimma	Cross sectional	Community	Q	Construction workers	360	14-45+	F/M
Belay at el.(2016)	Addis Ababa	Cross sectional	Hospital	Q	Nurses	430	20-59+	F/M
Kebed at el.(2019)	Mekelle	Cross sectional	School	Q	Teacher	656	30-40+	F/M
Beyen at el.(2013)	Gonder	Cross sectional	School	Q	Teacher	662	30-40+	F/M
Yosef at el.(2019)	Modjo	Cross sectional	Community	Q	Truck driver	422	<37.7-37.7+	M
Abebaw at el.(2018)	Addis Ababa	Cross sectional	Community	Q	Teacher	827	<30-59+	F/M
Wanamo at el.(2017)	Addis Ababa	Cross sectional	Community	Q	Taxi driver	422	NM	F/M
TeferaZelee at el.(2020)	Central & southern Ethiopia	Cross sectional	Community	Q	Traditional weaving workers	824	NM	F/M
Abebe at el.(2015)	Adama	Cross sectional	Hospital	Q	AHMC staff	300	<25-60+	F/M
Gebreyesus, at el.(2019)	Mekelle	Cross sectional	School	Q	Teacher	421	<30-40+	F/M
Mekonnen (2019)	Gonder	Cross sectional	Community	Q	Barber	434	<30-30+	F/M
Regassa at el.(2018)	Jimma	Cross sectional	Hospital	Q	Nurses	333	20-40+	F/M
Wami at el.(2019)	Gonder	Cross sectional	Community	Q	Low wage workers	422	<24-29+	F/M

Key: Q = questionnaire, NM = not mentioned, F = female, M = male, AHMC=Adama Hospital Medical College

Table 2: Methodological appraisal of included studies (n= 13)

Author	1	2	3	4	5	6	7	8	9	10	Score (%)	MA
Lette at el.(2018)	+	-	+	+	+	+	+	+	-	+	80	+
Belay at el.(2016)	+	-	+	+	+	+	+	+	+	+	90	+
Kebed at el.(2019)	+	-	+	+	+	+	+	+	+	+	80	+
Beyen at el.(2013)	+	-	+	+	+	+	+	+	-	+	80	+
Yosef at el.(2019)	+	-	+	+	+	+	+	+	+	+	90	+
Abebaw at el.(2018)	+	-	+	+	+	+	+	+	+	-	80	+
Wanamo at el.(2017)	+	-	+	+	+	+	+	+	+	+	90	+
TeferaZelee at el.(2020)	+	-	+	+	+	+	+	+	-	+	80	+
Abebe at el.(2015)	+	-	+	+	+	+	+	+	-	+	80	+
Gebreyesus, at el.(2019)	+	-	+	+	+	+	+	+	+	+	90	+
Mekonnen (2019)	+	-	+	+	+	+	+	+	+	+	90	+
Regassa at el.(2018)	+	-	+	+	+	+	+	+	-	+	80	+
Wami at el.(2019)	+	-	+	+	+	+	+	+	-	+	80	+

Key: + = criteria fulfilled; - =criteria not fulfilled; MA=methodologically acceptable

Table 3: A summary of socioeconomic and behavioral factors associated with low back pain among working Ethiopian population

Population	Reference	Main Associated factors of low back pain
Construction workers	(24)	Absence of vocational training, khat chewing, and working overtime
Nurses	(20)	Working shift, physical activities at work, sleep disturbance and felt little pleasure by doing things
Teachers	(23)	sleeping disturbance, prolonged standing, and irregular physical exercise
Teachers	(21)	Doing regular physical exercise, provisions of office at working institution and satisfaction with working environment and culture
Truck drivers	(30)	Smoking cigarette, physical inactivity, chronic diseases other than LBP, frequent lifting or carrying heavy objects, and perceived improper sitting posture while driving, perceived job
Teachers	(18)	Ergonomics training, enough teachers in school, prolonged sitting posture and poor work place social environment
Taxi drivers	(29)	Driving over ten years, uncomfortable seat, Frequency of lifting loads, Previous job that involved prolonged sitting, lack of physical exercise
Traditional weaving workers	(27)	Working seat without backrest , working 7 days in , workplace thermal level as warm, work at night and awareness on workplace safety as a protective effect
AHMC staffs	(19)	Obesity, stressed often, those worked in seated position more than six hours and those with long year experience
Teachers	(22)	Being female sex, smoking habit, doing regular physical and sleep disturbance
Barbers	(25)	Age, alcohol use, lack of safety training, working posture, and length of employment
Nurses	(26)	Lifting and transferring dependent patients, giving wound care, working in medical ward and Intensive care unit, working in mal-positions, working in the same positions for long period of time working with disoriented patients and bending or twisting back during work
Low wage workers	(28)	Being temporary employee, type of job which requires reaching/overstretching, engaging in a job that requires repetitive bending, making > 30 beds per day

Key: AHMC= Adama Hospital Medical College

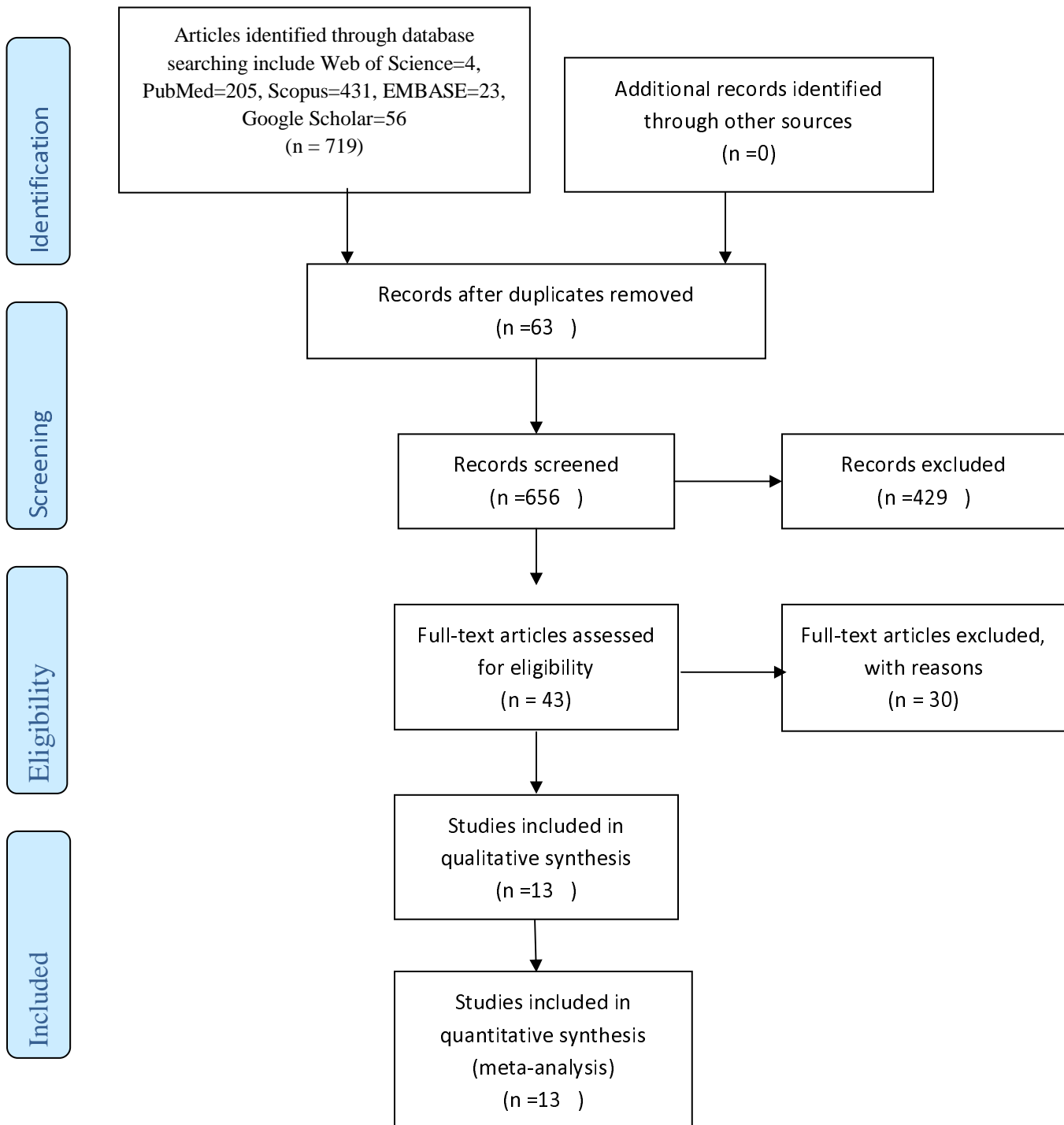


Figure 1: Flow chart of Studies selection

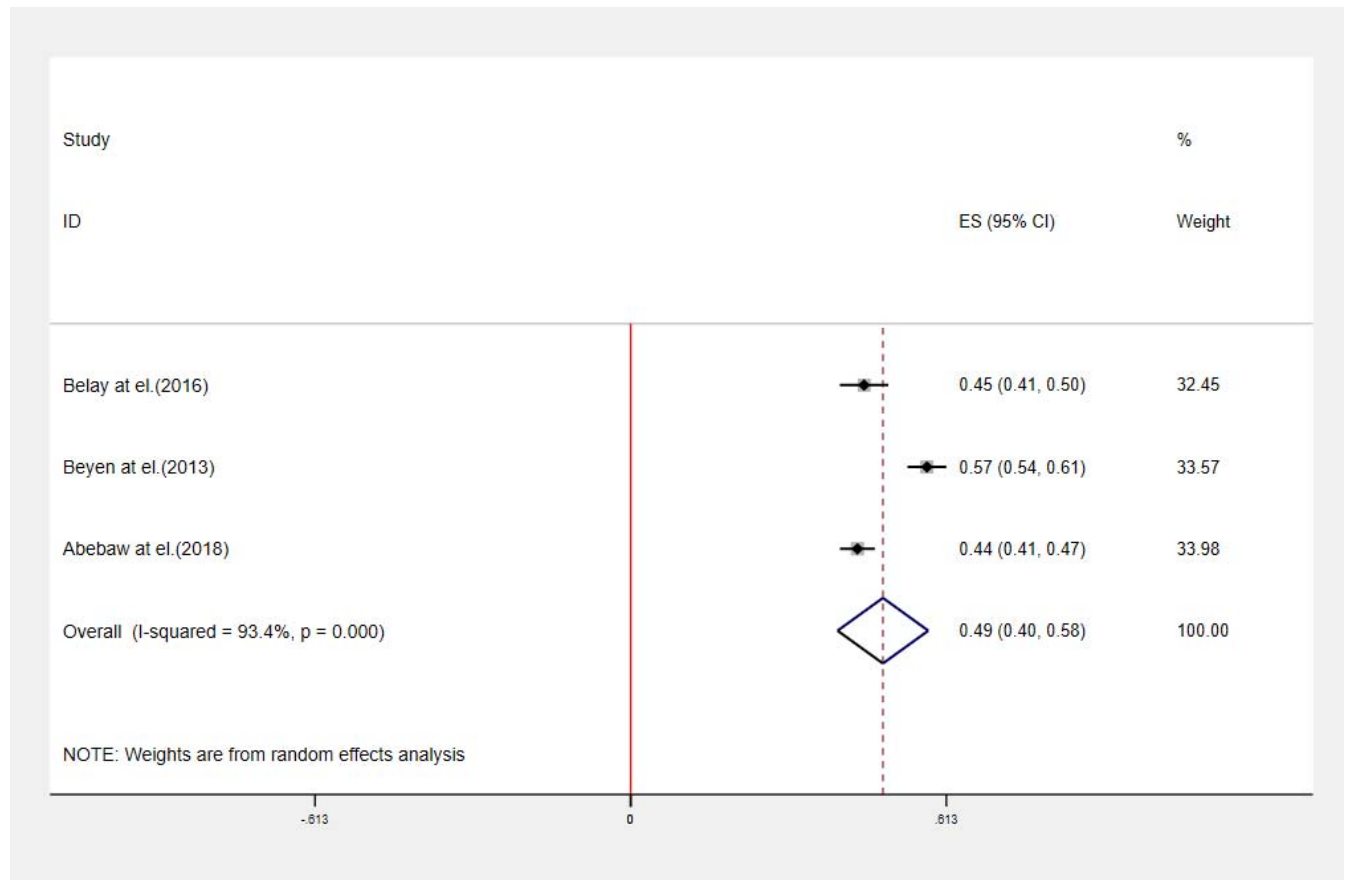


Figure 2: Pooled point prevalence of LBP (Random effects model used; ES- effect sizes, CI- Confidence interval).

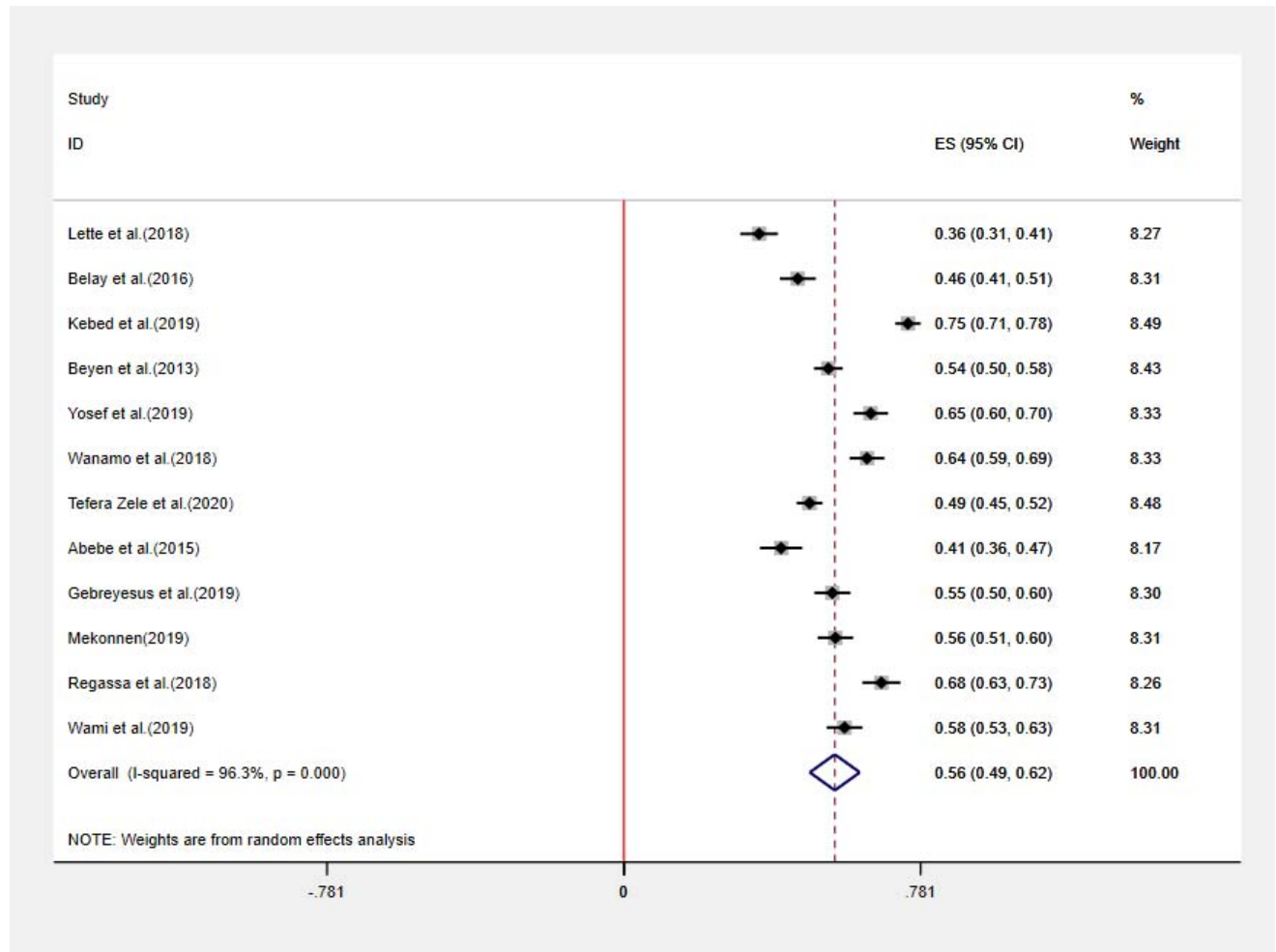


Figure 3: Pooled twelve-month prevalence of LBP (Random effects model used; ES- effect sizes, CI- Confidence interval)

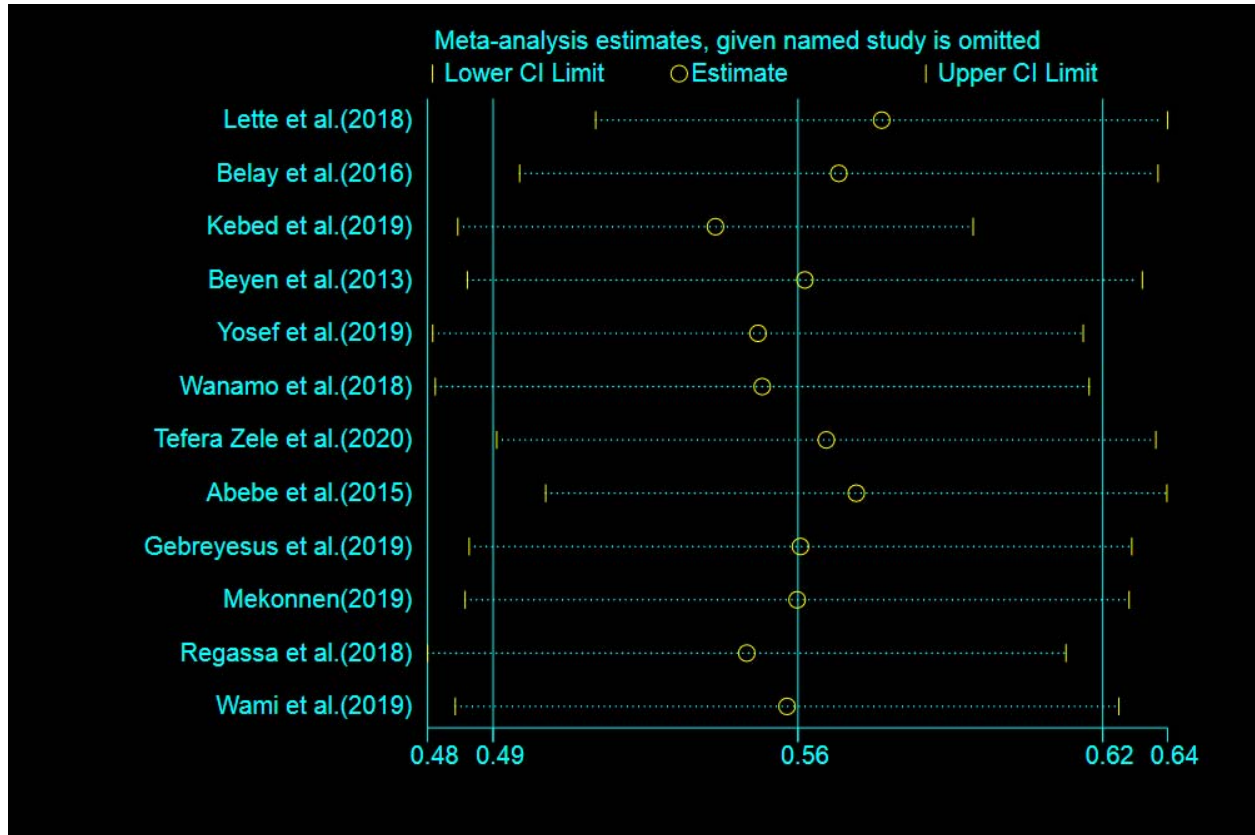


Figure 4: Sensitivity analysis of included studies to determine Prevalence of low back pain among working Ethiopian population.

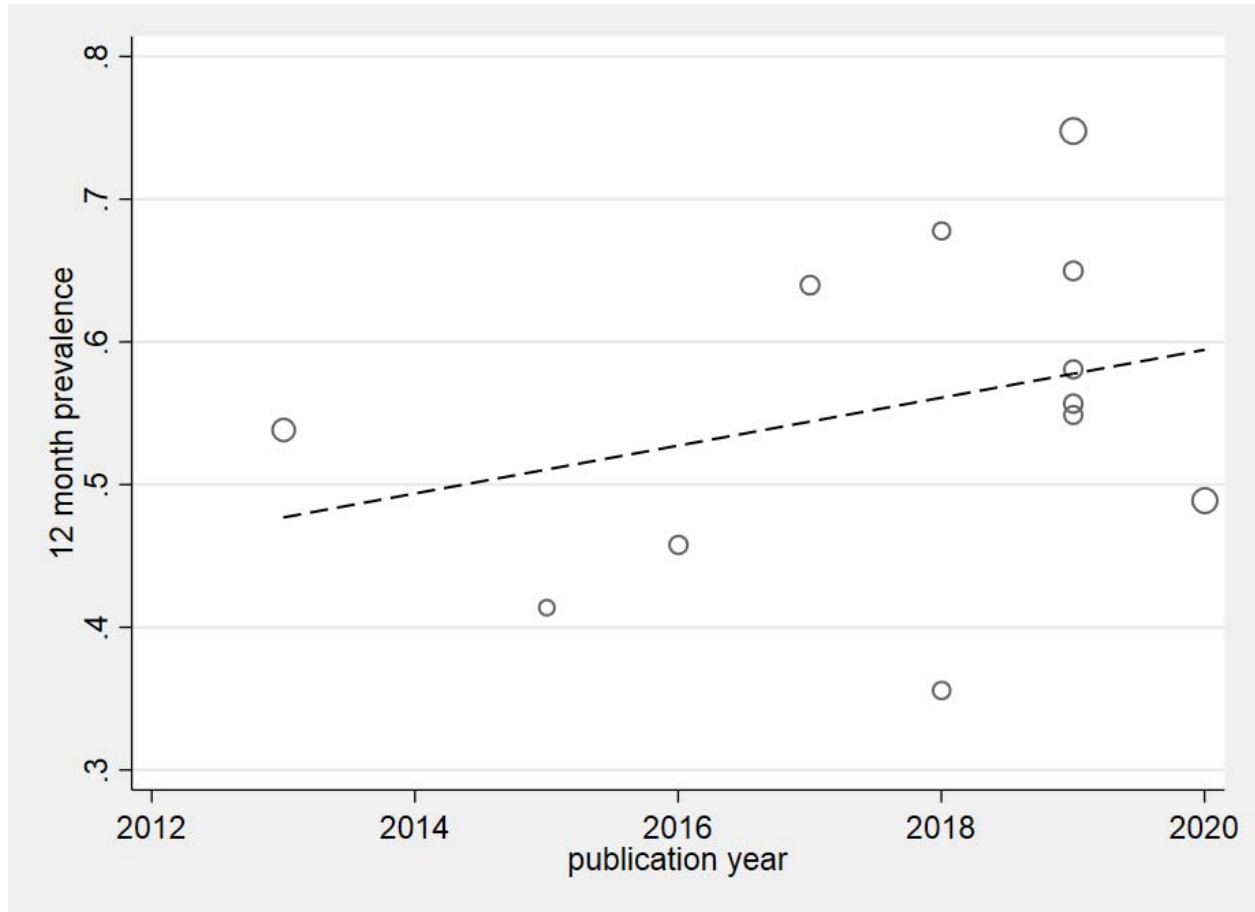


Figure 5: Meta-regression plot of Prevalence of low back pain among working Ethiopian population based on year of publication.

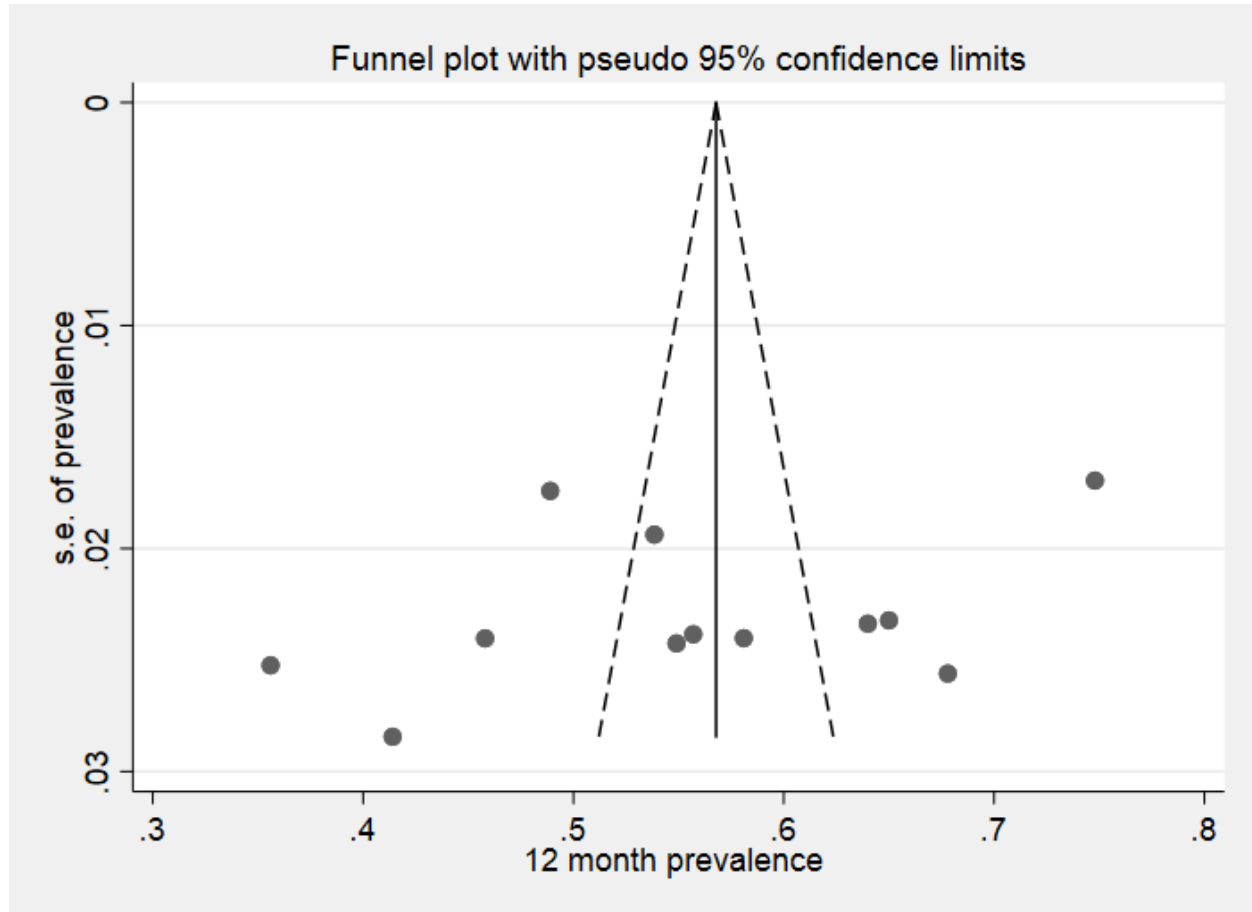


Figure 6: Meta funnel plot presentation of Prevalence of low back pain among working Ethiopian population. Abbreviation: s .e = standard error.