

Title:

The Incidence and Cumulative Risk of Major Surgery in Older Persons in the United States

Authors:

Robert D. Becher, MD, MS¹, Brent Vander Wyk, PhD², Linda Leo-Summers, MPH², Mayur M. Desai, PhD, MPH³, Thomas M. Gill, MD²

Affiliation:

¹ Division of General Surgery, Trauma, and Surgical Critical Care, Department of Surgery, Yale School of Medicine, New Haven, Connecticut

² Section of Geriatrics, Department of Internal Medicine, Yale School of Medicine, New Haven, Connecticut

³ Department of Chronic Disease Epidemiology, Yale School of Public Health, New Haven, Connecticut

For Correspondence:

Robert D. Becher, MD, MS
Division of General Surgery, Trauma, and Surgical Critical Care
Department of Surgery
Yale School of Medicine
330 Cedar Street, BB-310
New Haven, CT 06520
Email: robert.becher@yale.edu
Telephone: (203) 785-2572
Fax: (203) 785-3950

Manuscript word count:

2983

KEY POINTS

Question: What is the incidence and cumulative risk of major surgery in older persons in the United States?

Findings: In this prospective longitudinal study, data from 5,571 community-living fee-for-service Medicare beneficiaries were used to calculate nationally-representative estimates for the incidence and cumulative risk of major surgery over a 5-year period. Nearly 9 major surgeries were performed annually for every 100 older persons, and more than 1 in 7 Medicare beneficiaries underwent a major surgery over 5 years, representing nearly 5 million unique older persons.

Meaning: Major surgery is a common event in the lives of community-living older persons.

ABSTRACT

Importance: As the population of the United States (US) ages, there is considerable interest in ensuring safe and high-quality surgical care for older persons. Yet, valid, generalizable data on the occurrence of major surgery in the geriatric population are sparse.

Objective: To estimate the incidence and cumulative risk of major surgery in older persons over a 5-year period and evaluate how these estimates differ according to demographic and geriatric characteristics.

Design: Prospective longitudinal study.

Setting: Continental US from 2011 to 2016.

Participants: 5,571 community-living fee-for-service Medicare beneficiaries, aged 65+, from the National Health and Aging Trends Study (NHATS).

Main Outcomes and Measures: Major surgeries were identified through linkages with data from the Centers for Medicare & Medicaid Services. Data on frailty and dementia were obtained from the baseline NHATS assessment.

Results: The nationally-representative incidence of major surgery per 100 person-years was 8.8 (95% confidence interval [CI], 8.2-9.5), with estimates of 5.2 (95% CI, 4.7-5.7) and 3.7 (95% CI, 3.3-4.1) for elective and non-elective surgeries. The adjusted incidence of major surgery peaked at 10.8 (95% CI, 9.4-12.4) in persons 75-79 years, increased from 6.6 (95% CI, 5.8-7.5) in the non-frail group to 10.3 (95% CI, 8.9-11.9) in the frail group, and was similar by sex (males 8.6 [95% CI, 7.7-9.6]; females 8.3 [95% CI, 7.5-9.1]) and dementia (no 8.6 [95% CI, 7.9-9.3]; possible 7.8 [95% CI, 6.3-9.6]; probable 8.1 [95% CI, 6.7-9.9]). The 5-year cumulative risk of

major surgery was 13.8% (95% CI, 12.2%-15.5%), representing nearly 5 million unique older persons (4,958,048 [95% CI, 4,345,342-5,570,755]), including 12.1% (95% CI, 9.5%-14.6%) in persons 85-89 years, 9.1% (95% CI, 7.2%-11.0%) in those ≥ 90 years, 12.1% (95% CI, 9.9%-14.4%) in those with frailty, and 12.4% (95% CI, 9.8%-15.0%) in those with probable dementia.

Conclusions and Relevance: Major surgery is a common event in the lives of community-living older persons, including high-risk vulnerable subgroups such as the oldest old, those with frailty or dementia, and those undergoing non-elective surgery. The burden of major surgery in older Americans will add to the challenges ahead for the US health care system in our aging society.

The projected growth of the geriatric population has been called the most significant demographic trend in the history of the United States (US).^{1,2} The number of persons aged 65 years or older is expected to double between now and 2060, from 46 to 98 million.^{1,3} While the expanding geriatric population will affect all areas of medicine, one field that will be especially impacted is surgery.⁴

As the US population ages, the number of older persons who will require surgical intervention will increase substantially.⁵⁻⁷ Because advancing age, frailty, dementia, and other geriatric-specific conditions are all risk factors for adverse outcomes after surgery,⁸⁻¹⁶ there is considerable interest in ensuring safe and high-quality surgical care for older persons.¹⁷ Despite this demographic imperative, valid and generalizable data on the epidemiology of major surgery in older Americans are lacking. Estimates of surgery in the geriatric population are outdated, extrapolated from state-level assessments, and based on administrative discharge data. In addition, prior studies have employed a broad definition of a surgical procedure and have not included values for clinically relevant subgroups, such as those who are frail or cognitively impaired.^{4,5,18-23} Reliable, up-to-date national estimates of the occurrence of major surgery in older persons are needed to inform public health policy and planning, enhance the accuracy of medical and surgical needs assessments by academic, health care, and commercial institutions, and identify opportunities to intervene in clinical practice.

The objectives of the current study were two-fold: first, to estimate the incidence and cumulative risk of major surgery in older persons in the US, across the spectrum of surgical disciplines, including both elective and non-elective operations; and second, to evaluate how these estimates differ according to key demographic and geriatric characteristics, including frailty and dementia. To accomplish these objectives, we used data from the National Health and

Aging Trends Study²⁴ (NHATS), linked to data from the Centers for Medicare & Medicaid Services (CMS).

METHODS

Data Sources

NHATS is a prospective, nationally-representative longitudinal study of Medicare beneficiaries.²⁴ On September 30, 2010, NHATS drew a random sample of persons 65 years or older living in the contiguous US (excluding Alaska, Hawaii, and Puerto Rico) from the Medicare enrollment file, with oversampling of non-Hispanic blacks and those 90 years or older.²⁵ Baseline (Round 1) interviews, completed from May through November 2011, yielded a sample of 8,245 persons with a 71% weighted response rate. Proxy respondents were interviewed when the participant could not respond (n=583 or 5.8% [weighted]).^{25,26} The protocol was approved by the Johns Hopkins Institutional Review Board, and all participants provided informed consent.

CMS records of fee-for-service Medicare claims, cross-linked to NHATS data, were used to identify participants who underwent major surgery. Comparable data are not available in NHATS from Medicare Advantage. Major surgery was defined as any procedure in an operating room requiring the use of general anesthesia for a non-percutaneous, non-endoscopic, invasive operation. This definition, which has been previously implemented by our group,^{12,27} is consistent with other definitions of “high-risk” surgery in older persons.^{28,29} We categorized each procedure into one of six subtypes: 1. Musculoskeletal; 2. Abdominal/Gastrointestinal; 3. Vascular (including endovascular, non-coronary bypass grafts, and amputations); 4. Neurologic (including brain and spine); 5. Cardiothoracic; and 6. Other (including major endocrine, gynecologic, urologic, breast, plastic, otolaryngologic, and transplant surgery). Major surgeries were categorized as elective (planned) or non-elective (unplanned) based on a CMS indicator variable.^{12,27,30} Ophthalmology procedures did not meet criteria for major surgery.

Study Population

Among the 7,609 NHATS participants who were living in settings other than nursing homes (community-living) at the time of their Round 1 interview, we identified those who were enrolled for at least 1 month in fee-for-service Medicare during the subsequent 5-year surveillance window from 2011 to 2016. The number of participants with continuous fee-for-service Medicare, a combination of fee-for-service Medicare and Medicare Advantage, and Medicare Advantage only were 4,559 (61.1%), 1,012 (13.1%), and 2,038 (25.8%), respectively.

During Round 1 of NHATS, information was collected on demographic characteristics, including age, sex, race/ethnicity, education level, whether the individual lives alone; ten self-reported, physician diagnosed chronic conditions, including heart attack, high blood pressure, arthritis, osteoporosis, diabetes, lung disease, stroke, dementia or Alzheimer's disease, cancer, hip fracture since age 50; and two geriatric characteristics: frailty and dementia.²⁶ Participants were categorized as non-frail, pre-frail, and frail according to the Fried phenotype³¹ and as having no dementia, possible dementia, or probable dementia based on a validated assessment strategy.^{32,33} Data on frailty and dementia were 100% complete.^{31,32} Medicaid eligibility was obtained from CMS data.

Statistical Analysis

Incidence Rates

We calculated nationally-representative incidence rates of major surgery over the 5-year follow-up period using Poisson regression. All eligible surgeries were included in the numerator

of a given rate; to account for differences in time at risk for surgery, we used participants' time (in months) with fee-for-service Medicare coverage as the offset term. We calculated overall (unadjusted) incidence rates per 100 person-years for all major surgeries and separately by timing (elective and non-elective) and subtype of surgery. In addition, for all major surgeries, elective surgeries, and non-elective surgeries, we calculated both unadjusted and age- and sex-adjusted incidence rates stratified by four demographic and geriatric characteristics: age, sex, frailty, and dementia.

Cumulative Risk

We calculated the proportion (cumulative risk) and incidence count of individuals who underwent at least one major surgery during the 5-year follow-up period using data from NHATS participants who were continuously enrolled in fee-for-service Medicare, including decedents.^{34,35} Estimates were calculated for all major surgery, elective and non-elective major surgery, and subgroups defined by age, sex, frailty, and dementia.

To generate nationally-representative incidence and cumulative risk estimates, all analyses incorporated both the NHATS Round 1 analytic sampling weights^{25,36,37} and the cluster and strata variables, thereby accounting for the complex sample survey design.²⁵ All analyses were performed using SAS version 9.4 (SAS Institute, Inc., Cary, North Carolina, US). This study followed the Strengthening the Reporting of Observational Studies in Epidemiology (STROBE) reporting guideline.³⁸

RESULTS

Among the 5,571 community-living NHATS participants who were enrolled in fee-for-service Medicare for at least 1 month between May 2011 and November 2016 (**Table 1**), the mean age was 75.3 (Standard Error, 0.1) years, more than half were female (55.9%), and 4 out of 5 (81.5%) were non-Hispanic White. More than 1 in 8 (13.4%) were Medicaid eligible, and nearly 1 in 2 (43.4%) had 3 or more chronic conditions. Almost half (46.7%) of the participants were pre-frail, and 17.2% were frail, while more than 1 in 5 were cognitively impaired, with either possible (10.7%) or probable (10.7%) dementia. Differences between NHATS participants with at least 1 month of fee-for-service Medicare and those in fee-for-service only or Medicare Advantage only were relatively small, with the latter group having a slightly lower percentage of males, living alone, Medicaid eligible, frailty, and probable dementia.

Incidence Rates

Based on a total estimated time at risk of 97,049,615 person-years, the nationally-representative incidence rate of major surgery was 8.8 per 100 person-years (95% confidence interval [CI] 8.2-9.5), indicating that for every 100 community-living older Americans, 8.8 major surgeries were performed annually in the US. The national rates of elective and non-elective surgery were 5.2 (95% CI, 4.7-5.7) and 3.7 (95% CI, 3.3-4.1), respectively.

The adjusted incidence rate per 100 person-years of all major surgeries varied by age group (**Figure 1**), peaking at 10.8 (95% CI, 9.4-12.4) in persons 75-79 years and declining to a low of 6.4 (95% CI, 5.0-8.2) in those ≥ 90 years. Rates of elective surgery were highest in the youngest three age groups (65-69; 70-74; 75-79), while rates of non-elective surgery were

highest in the oldest three age groups (80-84; 85-89; ≥ 90). Rates were similar between males and females for both elective and non-elective surgeries. The incidence of major surgery increased with worsening frailty, from 6.6 (95% CI, 5.8-7.5) in the non-frail group to 10.3 (95% CI, 8.9-11.9) in the frail group. This increase was driven largely by an increase in non-elective surgery with worsening frailty, from 2.6 (95% CI, 2.1-3.2) in the non-frail group to 5.5 (95% CI, 4.5-6.6) in the frail group. Although there was relatively little difference in the rate of major surgery across the three dementia groups, the rate of elective surgery was considerably higher in the no dementia (4.2 [95% CI, 3.7-4.7]) than the probable dementia group (2.4 [95% CI, 1.6-3.6]), while the rate of non-elective surgery was considerably higher in the probable dementia (5.3 [95% CI, 4.2-6.7]) than no dementia group (3.9 [95% CI, 3.4-4.4]). The unadjusted and adjusted rates by age, sex, frailty, and dementia are shown in **eTable 1**, which also provides unadjusted rates by subtype of surgery. The most frequent per 100 person-years were musculoskeletal (3.6 [95% CI, 3.2-4.0]) and abdominal/gastrointestinal (1.7 [95% CI, 1.4-2.0]), while the least frequent was cardiothoracic (0.7 [95% CI, 0.6-0.9]).

Cumulative Risk

The 5-year cumulative risk of major surgery, based on participants who were continuously enrolled in fee-for-service Medicare, was 13.8% (95% CI, 12.2%-15.5%), representing nearly 5 million unique older persons (4,958,048 [95% CI, 4,345,342-5,570,755]). The cumulative risks were 8.6% (95% CI, 7.3%-9.2%) for elective surgery, yielding nearly 3.1 million older persons (3,088,809; [95% CI, 2,600,831-3,576,187]) and 6.8% (95% CI, 6.0%-7.6%) for non-elective surgery, yielding nearly 2.5 million older persons (2,439,253; [95% CI, 2,157,235-2,721,272]).

Figure 2 shows the 5-year cumulative risk of major surgery by the four demographic and geriatric characteristics. Values ranged from more than 9% in persons ≥ 90 years to more than 16% in the 74-79 and 80-84 age groups. The cumulative risk was not evenly distributed between elective and non-elective surgeries by age: the younger age groups (65-69; 70-74; 75-79) had higher risk for elective surgery, while the older age groups (80-84; 85-89; ≥ 90) had higher risk for non-elective surgery. The cumulative risk of major surgery was nearly identical for males and females, for both elective and non-elective surgeries. Values for cumulative risk were 15.6% (95% CI, 13.6%-17.5%) and 12.1% (95% CI, 9.9%-14.4%) in the pre-frail and frail groups. For both groups, risk was about equally divided between elective and non-elective major surgery, although the frail group had a slightly higher cumulative risk of non-elective surgery. In contrast, the cumulative risk of elective surgery (9.2% [95% CI, 7.3%-11.1%]) was much greater than that of non-elective surgery (4.5% [95% CI, 3.5%-5.5%]) in the non-frail group, yielding an overall risk of 12.6% (95% CI, 10.6%-14.5%). Although the cumulative risk of all major surgeries differed little by dementia status, the risk of elective surgery was highest in the no dementia group (9.4% [95% CI, 7.9%-10.8%]), while the risk of non-elective surgery was highest in the dementia group (8.9% [95% CI, 6.5%-11.4%]).

More detailed information about the cumulative risk of major surgery is provided in **eTable 2**.

DISCUSSION

In this nationally-representative sample of community-living older persons, we estimated the incidence and cumulative risk of major surgery in the US over a 5-year period and evaluated how these estimates differ by demographic and geriatric characteristics for both elective and non-elective surgeries. Our findings demonstrate that major surgery is a common event in the lives of community-living older persons, including high-risk vulnerable subgroups such as the oldest old (≥ 85 years), those with frailty or dementia, and those undergoing non-elective surgery. As the US prepares to meet the challenges of an aging society,^{2,39} the burden of major surgery in older Americans warrants attention from policy makers and others committed to a high-functioning national health care system.

We found that nearly 9 major surgeries were performed annually for every 100 community-living persons aged 65 years or older. During the 5-year surveillance window, more than 1 in 7 Medicare beneficiaries underwent at least one major surgery, representing nearly 5 million unique older persons. Two in 5 of these major surgeries were unplanned. Vulnerable subgroups had amongst the highest incidence rates and cumulative risks of major surgery in general and non-elective surgery in particular.

Our findings have important implications for the US health care system in terms of costs, caregivers, and care. First, the growing number of Medicare beneficiaries requiring major surgery in the coming years will further stress an already expensive Medicare program. In 2018, Medicare spending was \$605 billion, representing 20% of total national health spending, 15% of the entire federal budget, and 3% of gross domestic product (GDP).⁴⁰ During the next 30 years, with an increasing number of beneficiaries, Medicare spending is projected to grow considerably – to 6% of GDP.⁴¹ As over half of fee-for-service Medicare expenditures are for surgical care,

and nearly 50% of hospitalization costs are related to operating room-based procedures,^{42,43} the ability of Medicare to continue to cover all major surgery in the future will be fiscally challenging.

Second, there will be increased demand for surgeons and a perioperative workforce with competency in geriatric care. The US is already experiencing shortages in nine of 10 surgical specialties, with orthopedic surgery, general surgery, and urology having the largest surgeon deficits for specialties performing major surgery.^{44,45} Based on current projections suggesting that the supply of surgeons will remain constant for the next 15 years, the US will lack as many as 28,700 surgeons by 2033.⁴⁶ Furthermore, as highlighted in an Institute of Medicine report, the elder care workforce to manage geriatric patients is inadequate.⁴⁷ Given the multidisciplinary nature of perioperative management, the predicted shortfall of up to 139,000 physicians and 918,000 registered nurses within the next 10-13 years may adversely affect the ability to perform timely, safe, and high-quality major surgery.^{46,48}

Third, innovative strategies will be required to better address and prioritize the unique needs and wishes of older surgical patients in the perioperative period, especially those in high-risk vulnerable subgroups. Major surgery is inherently invasive and may be unnecessary, harmful, and even futile in some older persons. Nearly one-third of fee-for-service Medicare beneficiaries have at least one major surgery in the year before death, including 20% in the last month of life.²⁹ While studies of decedents must be interpreted carefully,⁴⁹ a large proportion of major surgeries are performed near the end of life. When surgery is being considered, the outcomes that matter most to older persons are symptom burden, functional independence, and health-related quality of life.⁵⁰⁻⁵² To reduce non-patient-centered, non-beneficial surgical care,⁵³⁻⁵⁷ developing new approaches to perioperative decision making, risk stratification,

outcome metrics, and goals of care will be needed. Future efforts should build on ongoing work by the Coalition for Quality in Geriatric Surgery (CQGS), a partnership between the American College of Surgeons (ACS) and the John A. Hartford Foundation.¹⁷

Measuring the current and future population-based burden of conditions that have a large-scale impact on public health is a fundamental feature of a mature, high-performance health care system.^{58–62} Despite its importance to public health and policy, up-to-date and reliable data on the occurrence of major surgery in the US are not readily available. The present analysis addresses this knowledge gap by providing current estimates on the incidence and cumulative risk of major surgery in older persons. These estimates will strengthen and enhance policymaking, allow health care institutions to more accurately plan for the future, and reinforce key areas of clinical practice that need to be addressed.

Three unique strengths enhance the generalizability, validity, and applicability of our findings. First, by linking CMS data to NHATS, a population-based cohort, we were able to generate nationally-representative estimates of major surgery in Medicare beneficiaries for the contiguous US. These estimates included both incidence and cumulative risk over a 5-year period, two complementary metrics of utilization. Prior studies employed only regional or state-level assessments, which do not provide a comprehensive picture of major surgery in the US.¹⁸ Other studies are outdated, often by more than 20 years, and are no longer relevant.^{4,18–20,28} Second, we use an established definition of major surgery in older persons that is clearly defined, clinically relevant, widely accepted, and encompasses the spectrum of surgical disciplines.^{12,27–29} Prior studies that have estimated rates of geriatric surgery employed either an overly-broad definition of a procedure,^{4,19–21,63} including very minor diagnostic and therapeutic interventions, or a very narrow definition, including only a small handful of operations.¹⁸ These definitions

could lead to erroneous conclusions about the rates and risks of major surgery in older persons and contribute to misleading population-based estimates. Third, we provide estimates for subgroups defined on the basis of frailty and dementia, two key determinants of health and well-being in older persons.^{12,27,64–66} To our knowledge, prior studies that have estimated rates of major surgery in older persons have not included geriatric characteristics,^{5,18–23} thereby limiting their applicability.

Our findings should be interpreted in the context of the following limitations. First, our results are limited to fee-for-service Medicare beneficiaries since CMS data on Medicare Advantage were not available. The penetrance of Medicare Advantage was around 25% in the current study but is projected to increase to 42% by 2028.⁶⁷ With the recent decision by CMS to make Medicare Advantage claims data more broadly available,⁶⁸ it should be possible to base future estimates on all Medicare beneficiaries. Second, because information on the geriatric conditions was not updated beyond NHATS Round 1, our findings may underestimate the occurrence of major surgeries in older persons who are frail or have dementia since the prevalence of these conditions increases over time. Third, we focused solely on the incidence and cumulative risk of major surgery in older persons. Future studies using nationally-representative data sources of older persons should focus on other high priority areas, such as evaluating functional outcomes, mortality, and quality of life after major surgery and elucidating potential health disparities related to major surgery, from racial and ethnic to geographic and socioeconomic.

CONCLUSION

Major surgery is a defining health issue for community-living older persons, including high-risk vulnerable subgroups such as the oldest old, those with frailty or dementia, and those having non-elective major surgery. Our findings provide up-to-date, generalizable data on the occurrence of major surgery in older Americans and highlight potential challenges for the US health care system in the context of an aging population needing major surgery.

ACKNOWLEDGMENTS

Authors' Contributions:

Concept and design: Becher, Gill

Acquisition, analysis, or interpretation of the data: All authors

Drafting of the manuscript: All authors

Critical revision of the manuscript for important intellectual content: All authors

Statistical Analysis: Becher, Vander Wyk, Leo-Summers, Gill

Administrative, technical, or material support: Becher, Vander Wyk, Leo-Summers, Gill

Supervision: Becher, Gill

Data Access, Responsibility, and Analysis:

Becher, Vander Wyk, and Gill had full access to all the data in the study and take responsibility for the integrity of the data and the accuracy of the data analysis.

Conflicts of Interest Disclosure:

No conflicts of interest were declared.

Funding/Support:

The study was conducted at the Yale Claude D. Pepper Older Americans Independence Center (P30AG021342). Dr. Gill is the recipient of an Academic Leadership Award (K07AG043587) from the National Institute on Aging.

Role of the Funder/Sponsor:

The funders had no role in the design and conduct of the study; collection, management, analysis, and interpretation of the data; preparation, review, or approval of the manuscript; and decision to submit the manuscript for publication.

REFERENCES

1. Mather M, Jacobsen LA, Pollard KM. Aging in the United States. *Population Bulletin*. 2015;70(2):1-23.
2. Dzau VJ, Inouye SK, Rowe JW, Finkelman E, Yamada T. Enabling Healthful Aging for All - The National Academy of Medicine Grand Challenge in Healthy Longevity. *N Engl J Med*. 2019;381(18):1699-1701. doi:10.1056/NEJMp1912298
3. United States Census Bureau. Older People Projected to Outnumber Children. Older People Projected to Outnumber Children. Accessed June 25, 2020.
<https://www.census.gov/newsroom/press-releases/2018/cb18-41-population-projections.html>
4. Etzioni DA, Liu JH, Maggard MA, Ko CY. The aging population and its impact on the surgery workforce. *Ann Surg*. 2003;238(2):170-177.
doi:10.1097/01.SLA.0000081085.98792.3d
5. Deiner S, Westlake B, Dutton RP. Patterns of surgical care and complications in elderly adults. *J Am Geriatr Soc*. 2014;62(5):829-835. doi:10.1111/jgs.12794
6. Fukuda N, Wada J, Niki M, Sugiyama Y, Mushiake H. Factors predicting mortality in emergency abdominal surgery in the elderly. *World J Emerg Surg*. 2012;7:12.
doi:10.1186/1749-7922-7-12
7. Prince MJ, Wu F, Guo Y, et al. The burden of disease in older people and implications for health policy and practice. *Lancet*. 2015;385(9967):549-562. doi:10.1016/S0140-6736(14)61347-7

8. Gajdos C, Kile D, Hawn MT, Finlayson E, Henderson WG, Robinson TN. Advancing Age and 30-Day Adverse Outcomes After Nonemergent General Surgeries. *Journal of the American Geriatrics Society*. 2013;61(9):1608-1614. doi:10.1111/jgs.12401
9. Hamel MB, Henderson WG, Khuri SF, Daley J. Surgical outcomes for patients aged 80 and older: morbidity and mortality from major noncardiac surgery. *J Am Geriatr Soc*. 2005;53(3):424-429. doi:10.1111/j.1532-5415.2005.53159.x
10. Finlayson E, Fan Z, Birkmeyer JD. Outcomes in Octogenarians Undergoing High-Risk Cancer Operation: A National Study. *Journal of the American College of Surgeons*. 2007;205(6):729-734. doi:10.1016/j.jamcollsurg.2007.06.307
11. Turrentine FE, Wang H, Simpson VB, Jones RS. Surgical risk factors, morbidity, and mortality in elderly patients. *J Am Coll Surg*. 2006;203(6):865-877. doi:10.1016/j.jamcollsurg.2006.08.026
12. Becher RD, Murphy TE, Gahbauer EA, Leo-Summers L, Stabenau HF, Gill TM. Factors Associated With Functional Recovery Among Older Survivors of Major Surgery. *Ann Surg*. 2020;272(1):92-98. doi:10.1097/SLA.0000000000003233
13. Makary MA, Segev DL, Pronovost PJ, et al. Frailty as a predictor of surgical outcomes in older patients. *J Am Coll Surg*. 2010;210(6):901-908. doi:10.1016/j.jamcollsurg.2010.01.028
14. McIsaac DI, Taljaard M, Bryson GL, et al. Frailty as a Predictor of Death or New Disability After Surgery: A Prospective Cohort Study. *Ann Surg*. 2020;271(2):283-289. doi:10.1097/SLA.0000000000002967

15. McIsaac DI, Bryson GL, van Walraven C. Association of Frailty and 1-Year Postoperative Mortality Following Major Elective Noncardiac Surgery: A Population-Based Cohort Study. *JAMA Surg*. 2016;151(6):538-545. doi:10.1001/jamasurg.2015.5085
16. O' Brien H, Mohan H, Hare CO, Reynolds JV, Kenny RA. Mind Over Matter? The Hidden Epidemic of Cognitive Dysfunction in the Older Surgical Patient. *Ann Surg*. 2017;265(4):677-691. doi:10.1097/SLA.0000000000001900
17. American College of Surgeons. Coalition for Quality in Geriatric Surgery Project. The Coalition for Quality in Geriatric Surgery. Accessed June 25, 2020. <https://www.facs.org/quality-programs/geriatric-surgery>
18. Etzioni DA, Liu JH, O'Connell JB, Maggard MA, Ko CY. Elderly patients in surgical workloads: a population-based analysis. *Am Surg*. 2003;69(11):961-965.
19. Owings MF, Kozak LJ. Ambulatory and inpatient procedures in the United States, 1996. *Vital Health Stat 13*. 1998;(139):1-119.
20. Popovic JR. 1999 National Hospital Discharge Survey: annual summary with detailed diagnosis and procedure data. *Vital Health Stat 13*. 2001;(151):i-v, 1-206.
21. Hall MJ, DeFrances CJ, Williams SN, Golosinskiy A, Schwartzman A. National Hospital Discharge Survey: 2007 summary. *Natl Health Stat Report*. 2010;(29):1-20, 24.
22. Steiner CA, Karaca Z, Moore BJ, Imshaug MC, Pickens G. Surgeries in Hospital-Based Ambulatory Surgery and Hospital Inpatient Settings, 2014: Statistical Brief #223. In:

- Healthcare Cost and Utilization Project (HCUP) Statistical Briefs*. Agency for Healthcare Research and Quality (US); 2006.
23. Elixhauser A, Andrews RM. Profile of inpatient operating room procedures in US hospitals in 2007. *Arch Surg*. 2010;145(12):1201-1208. doi:10.1001/archsurg.2010.269
 24. NHATS. National Health and Aging Trends Study homepage. National Health and Aging Trends Study homepage. Accessed June 25, 2020. <https://www.nhats.org/>
 25. Montaquila J, Freedman V, Edwards, B, Kasper, J. National Health and Aging Trends Study Round 1 Sample Design and Study Selection. NHATS Technical Paper #1. Baltimore: Johns Hopkins University School of Public Health. National Health and Aging Trends Study Round 1 Sample Design and Study Selection. NHATS Technical Paper #1. Baltimore: Johns Hopkins University School of Public Health. Published May 10, 2012. Accessed June 25, 2020. <https://www.nhats.org/>
 26. Kasper J, Freedman V. National Health and Aging Trends Study User Guide: Rounds 1-8 Final Release. Baltimore: Johns Hopkins University School of Public Health. National Health and Aging Trends Study User Guide: Rounds 1-8 Final Release. Baltimore: Johns Hopkins University School of Public Health. Published September 25, 2019. Accessed June 25, 2020. <https://www.nhats.org/>
 27. Stabenau HF, Becher RD, Gahbauer EA, Leo-Summers L, Allore HG, Gill TM. Functional Trajectories Before and After Major Surgery in Older Adults. *Ann Surg*. 2018;268(6):911-917. doi:10.1097/SLA.0000000000002659

28. Schwarze ML, Barnato AE, Rathouz PJ, et al. Development of a list of high-risk operations for patients 65 years and older. *JAMA Surg.* 2015;150(4):325-331.
doi:10.1001/jamasurg.2014.1819
29. Kwok AC, Semel ME, Lipsitz SR, et al. The intensity and variation of surgical care at the end of life: a retrospective cohort study. *Lancet.* 2011;378(9800):1408-1413.
doi:10.1016/S0140-6736(11)61268-3
30. Medicare Provider and Analysis Review (MedPAR) Inpatient Admission Type Code from the Center for Medicare and Medicaid Services (CMS) Research Data Assistance Center (ResDAC). Accessed June 25, 2020. <https://www.resdac.org/cms-data/variables/MEDPAR-Inpatient-Admission-Type-Code>
31. Bandeen-Roche K, Seplaki CL, Huang J, et al. Frailty in Older Adults: A Nationally Representative Profile in the United States. *J Gerontol A Biol Sci Med Sci.* 2015;70(11):1427-1434. doi:10.1093/gerona/glv133
32. Kasper J, Freedman V, Spillman B. Classification of persons by dementia status in the National Health and Aging Trends Study. NHATS Technical Paper #5. Baltimore: Johns Hopkins University School of Public Health. Classification of persons by dementia status in the National Health and Aging Trends Study. NHATS Technical Paper #5. Baltimore: Johns Hopkins University School of Public Health. Published July 23, 2013. Accessed June 25, 2020. <https://www.nhats.org/>

33. Davydow DS, Zivin K, Langa KM. Hospitalization, depression and dementia in community-dwelling older Americans: findings from the national health and aging trends study. *Gen Hosp Psychiatry*. 2014;36(2):135-141. doi:10.1016/j.genhosppsych.2013.11.008
34. Centers for Disease Control and Prevention (CDC) | Principles of Epidemiology in Public Health Practice -- Measures of Risk. Centers for Disease Control and Prevention (CDC) | Principles of Epidemiology in Public Health Practice -- Measures of Risk. Published May 11, 2020. Accessed June 25, 2020. <https://www.cdc.gov/csels/dsepd/ss1978/lesson3/section2.html>
35. Welch HG, Skinner JS, Schroeck FR, Zhou W, Black WC. Regional Variation of Computed Tomographic Imaging in the United States and the Risk of Nephrectomy. *JAMA Intern Med*. 2018;178(2):221-227. doi:10.1001/jamainternmed.2017.7508
36. Freedman V, Spillman B, Kasper J. Making National Estimates with the National Health and Aging Trends Study. NHATS Technical Paper #17. Making National Estimates with the National Health and Aging Trends Study. NHATS Technical Paper #17. Published January 26, 2018. Accessed June 25, 2020. <https://www.nhats.org/>
37. Deville J-C, Särndal C-E. Calibration Estimators in Survey Sampling. *Journal of the American Statistical Association*. 1992;87(418):376-382. doi:10.1080/01621459.1992.10475217
38. von Elm E, Altman DG, Egger M, et al. The Strengthening the Reporting of Observational Studies in Epidemiology (STROBE) statement: guidelines for reporting observational studies. *Epidemiology*. 2007;18(6):800-804. doi:10.1097/EDE.0b013e3181577654

39. Rowe JW, Fulmer T, Fried L. Preparing for Better Health and Health Care for an Aging Population. *JAMA*. 2016;316(16):1643-1644. doi:10.1001/jama.2016.12335
40. Cubanski J, Neuman T, Freed M. The Facts on Medicare Spending and Financing. Henry J. Kaiser Family Foundation. Published June 22, 2018. KFF. Published August 20, 2019. Accessed June 25, 2020. <https://www.kff.org/medicare/issue-brief/the-facts-on-medicare-spending-and-financing/>
41. Congressional Budget Office: The 2019 Long-Term Budget Outlook. Accessed June 25, 2020. <https://www.cbo.gov/publication/55331>
42. Kaye DR, Luckenbaugh AN, Oerline M, et al. Understanding the Costs Associated With Surgical Care Delivery in the Medicare Population. *Ann Surg*. 2020;271(1):23-28. doi:10.1097/SLA.0000000000003165
43. McDermott KW, Freeman WJ, Elixhauser A. Overview of Operating Room Procedures During Inpatient Stays in U.S. Hospitals, 2014: Statistical Brief #233. In: *Healthcare Cost and Utilization Project (HCUP) Statistical Briefs*. Agency for Healthcare Research and Quality (US); 2014.
44. National Center for Health Workforce Analysis | National and Regional Projections of Supply and Demand for Surgical Specialty Practitioners: 2013-2025. Department of Health and Human Services, Bureau of Health Workforce. Published August 5, 2016. Accessed June 25, 2020. <https://bhw.hrsa.gov/national-center-health-workforce-analysis>
45. Surgical Workforce Shortages. American College of Surgeons. Accessed June 25, 2020. <https://www.facs.org/advocacy/federal/surgworkforce>

46. The 2020 Update: The Complexities of Physician Supply and Demand: Projections from 2018 to 2033. Association of American Medical Colleges (AAMC). Accessed June 28, 2020. <https://www.aamc.org/news-insights/press-releases/new-aamc-report-confirms-growing-physician-shortage>
47. Institute of Medicine (US) Committee on the Future Health Care Workforce for Older Americans. *Retooling for an Aging America: Building the Health Care Workforce*. National Academies Press (US); 2008.
48. Juraschek SP, Zhang X, Ranganathan V, Lin VW. Republished: United States Registered Nurse Workforce Report Card and Shortage Forecast. *Am J Med Qual*. 2019;34(5):473-481. doi:10.1177/1062860619873217
49. Bach PB, Schrag D, Begg CB. Resurrecting treatment histories of dead patients: a study design that should be laid to rest. *JAMA*. 2004;292(22):2765-2770. doi:10.1001/jama.292.22.2765
50. Bernard MA, Clayton JA, Lauer MS. Inclusion Across the Lifespan: NIH Policy for Clinical Research. *JAMA*. 2018;320(15):1535-1536. doi:10.1001/jama.2018.12368
51. Fried TR, Tinetti M, Agostini J, Iannone L, Towle V. Health outcome prioritization to elicit preferences of older persons with multiple health conditions. *Patient Educ Couns*. 2011;83(2):278-282. doi:10.1016/j.pec.2010.04.032
52. Fried TR, Bradley EH, Towle VR, Allore H. Understanding the treatment preferences of seriously ill patients. *N Engl J Med*. 2002;346(14):1061-1066. doi:10.1056/NEJMsa012528

53. Boyd C, Smith CD, Masoudi FA, et al. Decision Making for Older Adults With Multiple Chronic Conditions: Executive Summary for the American Geriatrics Society Guiding Principles on the Care of Older Adults With Multimorbidity. *J Am Geriatr Soc*. 2019;67(4):665-673. doi:10.1111/jgs.15809
54. American Geriatrics Society Expert Panel on the Care of Older Adults with Multimorbidity. Guiding principles for the care of older adults with multimorbidity: an approach for clinicians. *J Am Geriatr Soc*. 2012;60(10):E1-E25. doi:10.1111/j.1532-5415.2012.04188.x
55. Yourman LC, Lee SJ, Schonberg MA, Widera EW, Smith AK. Prognostic indices for older adults: a systematic review. *JAMA*. 2012;307(2):182-192. doi:10.1001/jama.2011.1966
56. Suskind AM, Finlayson E. A Call for Frailty Screening in the Preoperative Setting. *JAMA Surg*. 2017;152(3):240-241. doi:10.1001/jamasurg.2016.4256
57. Robinson TN, Walston JD, Brummel NE, et al. Frailty for Surgeons: Review of a National Institute on Aging Conference on Frailty for Specialists. *J Am Coll Surg*. 2015;221(6):1083-1092. doi:10.1016/j.jamcollsurg.2015.08.428
58. Welch HG, Kramer BS, Black WC. Epidemiologic Signatures in Cancer. *N Engl J Med*. 2019;381(14):1378-1386. doi:10.1056/NEJMsr1905447
59. Centers for Disease Control and Prevention (CDC) Data & Statistics. CDC Data & Statistics homepage. Published January 29, 2020. Accessed June 25, 2020. <https://www.cdc.gov/datastatistics/index.html>

60. The American Heart Association (AHA): Heart and Stroke Statistics. www.heart.org. Accessed June 25, 2020. <https://www.heart.org/en/about-us/heart-and-stroke-association-statistics>
61. American Cancer Society | Cancer Facts & Statistics. American Cancer Society | Cancer Facts & Statistics. Accessed June 25, 2020. <http://cancerstatisticscenter.cancer.org/>
62. National Center for Health Statistics: Older Persons' Health. National Center for Health Statistics: Older Persons' Health. Published June 26, 2019. Accessed June 25, 2020. <https://www.cdc.gov/nchs/fastats/older-american-health.htm>
63. National Hospital Discharge Survey (NHDS): Homepage. Published March 2, 2019. Accessed June 25, 2020. <https://www.cdc.gov/nchs/nhds/index.htm>
64. Optimal Perioperative Care of the Geriatric Patient. American College of Surgeons Quality Programs Homepage. Accessed June 25, 2020. <https://www.facs.org/quality-programs/acsnqip/geriatric-periop-guideline>
65. Span P. The Elderly Are Getting Complex Surgeries. Often It Doesn't End Well. *The New York Times*. <https://www.nytimes.com/2019/06/07/health/elderly-surgery-complications.html>. Published June 7, 2019. Accessed June 25, 2020.
66. Oresanya LB, Lyons WL, Finlayson E. Preoperative assessment of the older patient: a narrative review. *JAMA*. 2014;311(20):2110-2120. doi:10.1001/jama.2014.4573
67. Neuman P, Jacobson GA. Medicare Advantage Checkup. *N Engl J Med*. 2018;379(22):2163-2172. doi:10.1056/NEJMhpr1804089

68. Remarks by CMS Administrator Seema Verma at the Health Datapalooza on April 26, 2018. Centers for Medicare & Medicaid Services (CMS). Accessed June 25, 2020.
<https://www.cms.gov/newsroom/press-releases/speech-remarks-cms-administrator-seema-verma-health-datapalooza>

FIGURES

FIGURE 1. Age- and sex-adjusted incidence rates per 100 person-years of major surgery by age (A), sex (B), frailty (C), and dementia (D). All plots are shown by timing of surgery (elective vs non-elective). Major surgery subtypes are aggregated. Error bars represent 95% confidence intervals. Exact incidence rates are provided in **eTable 1**.

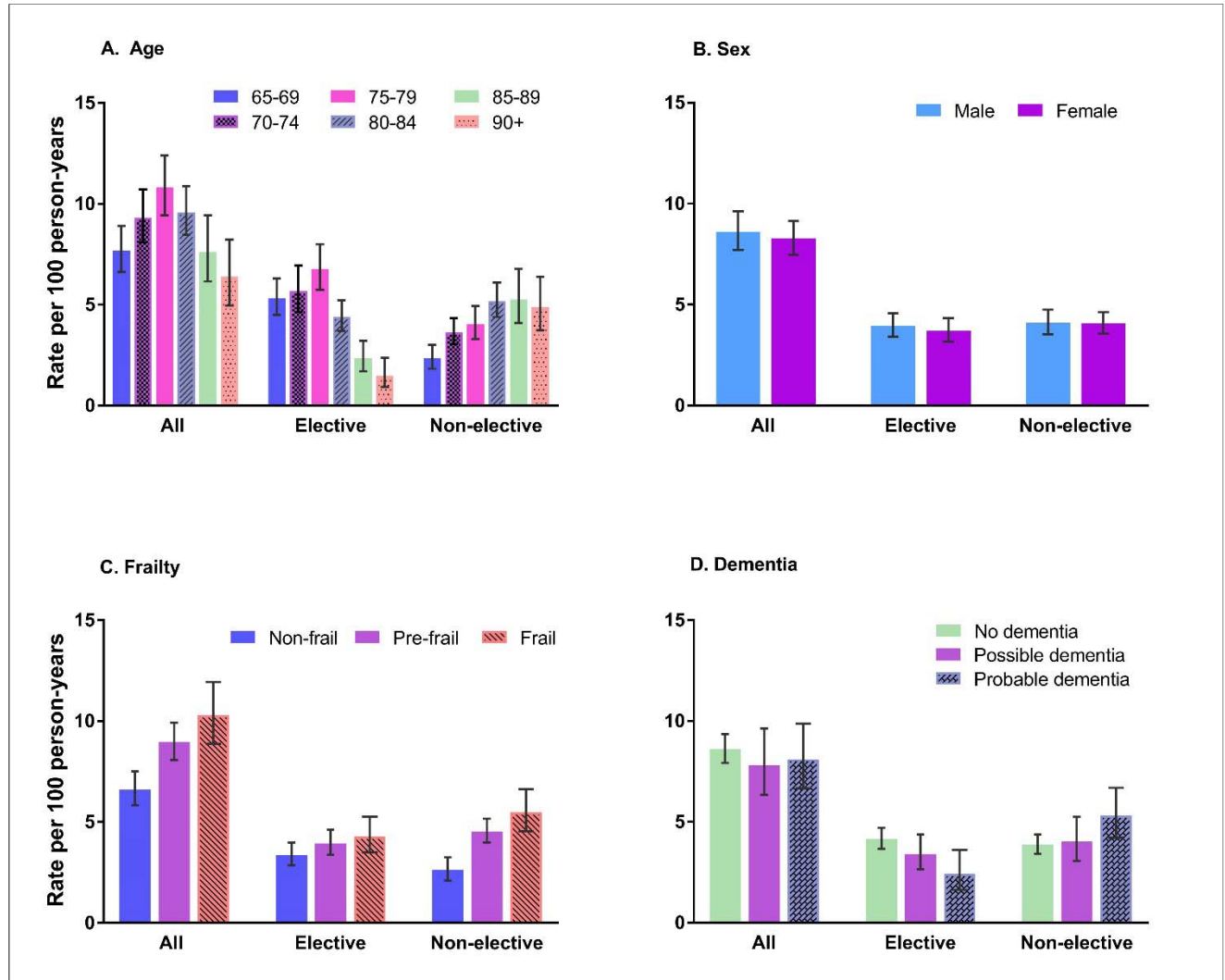
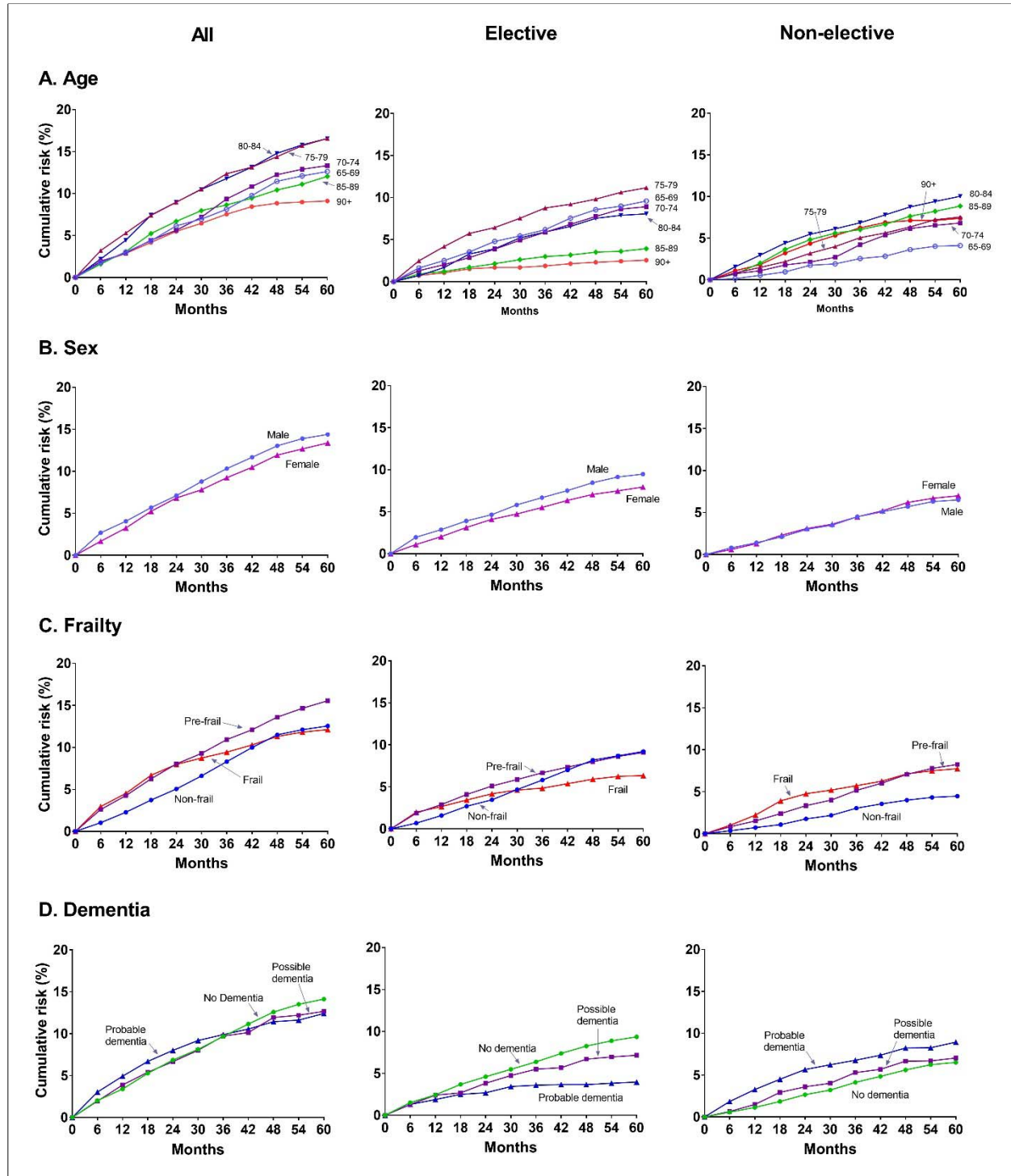


FIGURE 2: Cumulative risk of any major surgery over 5 years by age (A), sex (B), frailty (C), and dementia (D). Plots are shown by all major surgery as well as elective and non-elective major surgery. Major surgery subtypes are aggregated. Exact weighted cumulative risk proportions, with 95% confidence intervals, are provided in **eTable 2**.



TABLES:

Table 1: Characteristics of Community-Living NHATS Participants (N=7,609) According to Type of Medicare Coverage During 5-year Follow-up Period, 2011 - 2016^a

Variable	At Least 1 Month Fee-for-Service Coverage (N=5571)		Fee-for-Service Only (N=4559)		Mixed Fee-for-Service and Medicare Advantage (N=1012)		Medicare Advantage Only (N=2038)	
	N	% or mean (SE)	N	% or mean (SE)	N	% or mean (SE)	N	% or mean (SE)
Mean age, years	5571	75.3 (0.10)	4559	75.7 (0.11)	1012	73.7 (0.22)	2038	75.2 (0.16)
Age groups (in years)								
65-69	1049	28.4	805	27.2	244	34.1	360	26.6
70-74	1114	24.3	870	23.6	244	27.7	465	26.8
75-79	1073	18.6	870	18.6	203	18.3	440	20.5
80-84	1105	14.7	951	15.7	154	10.3	400	14.6
85-89	737	9.6	625	10.0	112	7.3	216	7.8
90 and older	493	4.4	438	4.9	55	2.4	157	3.7
Gender								
Male	2362	44.1	1950	44.1	412	44.0	809	41.5
Female	3209	55.9	2609	55.9	600	56.0	1229	58.6
Race & Ethnicity								
White, non-Hispanic	3851	81.5	3320	84.1	531	69.3	1335	77.7
Black, non-Hispanic	1192	7.8	855	6.7	337	13.0	470	9.0
Hispanic	286	5.7	202	4.7	84	10.4	168	9.7
Other	173	3.7	124	3.2	49	6.2	46	2.8
Unknown	69	1.3	58	1.3	11	1.2	19	0.8
Education								
< High school	1485	20.9	1136	19.6	349	27.1	562	23.1
High school or equivalent	1460	26.5	1217	26.8	243	24.9	609	29.5
> High School	2554	51.3	2148	52.3	406	46.4	843	46.3
Unknown	72	1.4	58	1.3	14	1.6	24	1.0

(continued)

(Table 1 continued)

Variable	At Least 1 Month Fee-for-Service Coverage (N=5571)		Fee-for-Service Only (N=4559)		Mixed Fee-for-Service and Medicare Advantage (N=1012)		Medicare Advantage Only (N=2038)	
	N	% or mean (SE)	N	% or mean (SE)	N	% or mean (SE)	N	% or mean (SE)
Lives alone	1870	30.6	1522	30.7	348	30.0	618	27.6
Medicaid eligible	899	13.4	626	11.2	273	23.4	265	10.4
Number of chronic conditions (0-10)	5570	2.4 (0.02)	4558	2.4 (0.02)	1012	2.3 (0.05)	2038	2.3 (0.03)
3 or more	2605	43.4	2158	44.0	447	40.4	938	43.2
Frail phenotype								
Non-frail	1703	36.1	1403	36.5	300	34.4	674	38.4
Pre-frail	2660	46.7	2178	46.6	482	47.3	957	45.4
Frail	1208	17.2	978	16.9	230	18.3	407	16.2
Dementia status								
No dementia	4036	78.7	3315	78.9	721	77.5	1539	80.1
Possible dementia	721	10.7	574	10.6	147	11.2	275	11.6
Probable dementia	814	10.7	670	10.5	144	11.3	224	8.3

Abbreviations: NHATS, National Health and Aging Trends Study; N, number; SE, standard error.

^a N's are unweighted; means, percentages and standard errors are weighted.

Supplementary Online Content

eTable 1: Incidence Rates of Major Surgery in Medicare Beneficiaries According to Demographic and Geriatric Characteristics and Subtype of Surgery, by Timing of Operation

eTable 2: National Estimates of the 5-Year Cumulative Risk of Major Surgery in Community Living Older Adults, by Timing of Operation

eTable 1: Incidence Rates of Major Surgery in Medicare Beneficiaries According to Demographic and Geriatric Characteristics and Subtype of Surgery, by Timing of Operation^a

Variable	All Major Surgery		Elective Major Surgery		Non-Elective Major Surgery		Person-years (time at risk) ^b
	Unadjusted incidence (95% CI)	Age- and sex-adjusted incidence (95% CI)	Unadjusted incidence (95% CI)	Age- and sex-adjusted incidence (95% CI)	Unadjusted incidence (95% CI)	Age- and sex-adjusted incidence (95% CI)	
Age groups (in years)							
65-69	7.7 (6.6-8.9)	7.7 (6.6-8.9)	5.3 (4.5-6.3)	5.3 (4.5-6.3)	2.3 (1.8-3.0)	2.3 (1.8-3.0)	31,930,433
70-74	9.3 (8.1-10.7)	9.3 (8.1-10.7)	5.7 (4.6-6.9)	5.7 (4.6-6.9)	3.6 (3.0-4.3)	3.6 (3.0-4.3)	22,692,737
75-79	10.8 (9.4-12.4)	10.8 (9.4-12.4)	6.8 (5.7-8.0)	6.8 (5.7-8.0)	4.0 (3.3-4.9)	4.0 (3.3-4.9)	17,693,419
80-84	9.5 (8.4-10.8)	9.6 (8.5-10.9)	4.4 (3.7-5.2)	4.4 (3.7-5.2)	5.2 (4.4-6.1)	5.2 (4.4-6.1)	13,445,812
85-89	7.6 (6.1-9.4)	7.6 (6.2-9.4)	2.3 (1.7-3.2)	2.3 (1.7-3.2)	5.3 (4.1-6.8)	5.3 (4.1-6.8)	7,814,766
90 and older	6.3 (4.9-8.2)	6.4 (5.0-8.2)	1.5 (0.9-2.4)	1.5 (0.9-2.4)	4.9 (3.7-6.4)	4.9 (3.7-6.4)	3,472,448
Gender							
Male	9.1 (8.1-10.1)	8.6 (7.7-9.6)	5.4 (4.8-6.2)	3.9 (3.4-4.6)	3.6 (3.1-4.2)	4.1 (3.5-4.8)	42,937,326
Female	8.6 (7.8-9.6)	8.3 (7.5-9.1)	4.9 (4.3-5.7)	3.7 (3.2-4.3)	3.7 (3.3-4.3)	4.1 (3.6-4.6)	54,112,290
Frail phenotype							
Non-frail	7.1 (6.3-8.1)	6.6 (5.8-7.5)	4.9 (4.2-5.6)	3.4 (2.9-4.0)	2.3 (1.8-2.8)	2.6 (2.1-3.2)	37,916,547
Pre-frail	9.7 (8.7-10.6)	9.0 (8.1-9.9)	5.4 (4.6-6.2)	3.9 (3.4-4.6)	4.3 (3.8-4.9)	4.5 (4.0-5.2)	45,613,074
Frail	10.8 (9.3-12.5)	10.3 (8.9-11.9)	5.2 (4.3-6.4)	4.3 (3.5-5.3)	5.5 (4.6-6.7)	5.5 (4.5-6.6)	13,519,994
Dementia status							
No dementia	8.9 (8.3-9.7)	8.6 (7.9-9.3)	5.5 (5.0-6.1)	4.2 (3.7-4.7)	3.4 (3.0-3.9)	3.9 (3.4-4.4)	79,337,735
Possible dementia	8.2 (6.7-10.1)	7.8 (6.3-9.6)	4.2 (3.3-5.3)	3.4 (2.7-4.4)	4.1 (3.1-5.3)	4.0 (3.1-5.2)	9,623,267
Probable dementia	8.4 (6.9-10.3)	8.1 (6.7-9.9)	2.7 (1.8-4.0)	2.4 (1.6-3.6)	5.7 (4.5-7.2)	5.3 (4.2-6.7)	8,088,614

(continued)

(eTable 1 continued)

Variable	All Major Surgery		Elective Major Surgery		Non-Elective Major Surgery		Person-years (time at risk) ^b
	Unadjusted incidence (95% CI)	Age- and sex-adjusted incidence (95% CI)	Unadjusted incidence (95% CI)	Age- and sex-adjusted incidence (95% CI)	Unadjusted incidence (95% CI)	Age- and sex-adjusted incidence (95% CI)	
Subtype of Surgery							
Musculoskeletal	3.6 (3.2-4.0)	---	2.1 (1.8-2.4)	---	1.5 (1.3-1.7)	---	97,049,615
Abdominal / Gastrointestinal	1.7 (1.4-2.0)	---	0.6 (0.5-0.8)	---	1.0 (0.9-1.3)	---	97,049,615
Vascular	1.0 (0.8-1.2)	---	0.7 (0.5-0.9)	---	0.3 (0.2-0.4)	---	97,049,615
Neurologic	0.8 (0.7-1.0)	---	0.6 (0.5-0.8)	---	0.2 (0.1-0.3)	---	97,049,615
Cardiothoracic	0.7 (0.6-0.9)	---	0.4 (0.3-0.6)	---	0.3 (0.2-0.4)	---	97,049,615
Other	1.1 (0.9-1.3)	---	0.7 (0.6-0.9)	---	0.4 (0.3-0.5)	---	97,049,615

Abbreviations: CI, confidence interval; NA, not applicable

^a All observable months for fee-for-service Medicare beneficiaries were included. Stratum-specific values for age and sex are adjusted for the other. All other values are adjusted for both age and sex. Adjusted values were not calculated for "Subtypes of Surgery" because some models did not converge due to sparsity of data for certain subtypes.

^b Person-years at risk are calculated by variable, and are the same for all major surgery, elective major surgery, and non-elective major surgery.

eTable 2: National Estimates of the 5-Year Cumulative Risk of Major Surgery in Community Living Older Adults, by Timing of Operation^a

Variable	All Major Surgery				Elective Major Surgery				Non-Elective Major Surgery			
	Cumulative Risk	95% CI	Incidence Count	SD	Cumulative Risk	95% CI	Incidence Count	SD	Cumulative Risk	95% CI	Incidence Count	SD
Overall risk, by month												
6	2.1	1.6-2.6	756,702	85,433	1.5	1.1-1.8	525,269	68,928	0.7	0.5-0.9	252,896	37,071
12	3.6	3.0-4.2	1,291,163	114,199	2.4	1.9-2.9	853,669	91,724	1.4	1.0-1.7	494,792	59,742
18	5.4	4.6-6.2	1,949,552	140,540	3.5	2.9-4.1	1,241,442	110,673	2.2	1.8-2.6	796,931	65,089
24	6.9	6.0-7.9	2,494,131	172,596	4.3	3.6-5.0	1,554,249	132,910	3.0	2.6-3.5	1,094,400	85,616
30	8.2	7.1-9.3	2,949,738	196,806	5.2	4.3-6.1	1,867,443	164,927	3.6	3.1-4.1	1,285,967	90,114
36	9.7	8.5-10.9	3,481,672	225,125	6.0	5.1-7.0	2,156,750	177,082	4.5	3.9-5.2	1,617,077	109,207
42	11.0	9.7-12.3	3,944,816	237,948	6.8	5.8-7.9	2,456,374	197,250	5.2	4.6-5.8	1,859,004	101,784
48	12.4	10.9-13.9	4,452,274	269,736	7.7	6.5-8.8	2,746,511	215,755	6.0	5.3-6.7	2,144,564	118,082
54	13.2	11.6-14.8	4,735,867	289,504	8.2	6.9-9.5	2,940,147	234,757	6.5	5.7-7.2	2,327,469	130,812
60	13.8	12.1-15.5	4,958,048	305,858	8.6	7.3-9.9	3,088,509	243,445	6.8	6.0-7.6	2,439,253	140,781

(continued)

(eTable 2 continued)

Variable	All Major Surgery				Elective Major Surgery				Non-Elective Major Surgery			
	Cumulative Risk	95% CI	Incidence Count	SD	Cumulative Risk	95% CI	Incidence Count	SD	Cumulative Risk	95% CI	Incidence Count	SD
Age groups (in years), by month												
65-69												
6	1.8	0.9-2.6	192,836	44,616	1.6	0.9-2.4	179,064	42,248	0.1	0.0-0.3	16,417	8,741
12	3.0	1.9-4.1	330,969	60,525	2.5	1.5-3.5	274,941	54,380	0.5	0.2-0.9	58,673	20,729
18	4.4	3.2-5.6	479,446	65,179	3.5	2.5-4.6	387,111	56,827	0.9	0.5-1.4	103,766	26,204
24	6.2	4.8-7.5	675,143	77,784	4.8	3.6-6.0	524,755	67,659	1.8	1.1-2.4	192,264	37,264
30	7.0	5.5-8.5	763,114	85,661	5.4	4.1-6.8	595,839	78,044	1.9	1.2-2.6	209,150	40,217
36	8.1	6.5-9.8	892,021	95,048	6.2	4.8-7.6	678,307	81,148	2.5	1.7-3.4	279,760	49,884
42	9.8	8.0-11.5	1,070,676	99,524	7.6	5.9-9.2	828,490	91,919	2.8	2.0-3.7	310,875	46,381
48	11.5	9.6-13.3	1,257,078	106,199	8.6	6.9-10.2	938,796	97,014	3.6	2.7-4.5	398,390	49,292
54	12.1	10.2-14.0	1,327,341	113,220	9.0	7.2-10.8	984,561	104,405	4.0	3.0-5.0	441,070	52,967
60	12.6	10.6-14.6	1,386,227	117,687	9.6	7.7-11.5	1,052,622	111,387	4.1	3.1-5.1	450,768	55,438
70-74												
6	1.9	1.1-2.8	158,718	34,273	1.3	0.6-2.0	107,597	27,517	0.7	0.3-1.2	60,576	19,660
12	2.9	1.9-3.9	237,521	39,319	2.0	1.2-2.8	165,826	32,989	1.1	0.5-1.6	88,267	22,207
18	4.4	3.2-5.7	363,318	52,401	2.9	1.9-3.8	234,499	39,738	1.8	1.0-2.6	145,390	31,642
24	5.6	4.2-7.0	460,070	59,537	3.9	2.7-5.0	315,976	48,104	2.1	1.3-3.0	174,549	35,334
30	7.2	5.5-8.9	588,030	73,663	4.9	3.5-6.3	403,446	60,002	2.7	1.8-3.6	221,418	38,566
36	9.3	7.4-11.3	765,453	84,986	5.9	4.3-7.4	481,352	66,278	4.2	3.0-5.5	345,561	51,129
42	10.8	8.8-12.9	886,953	90,875	6.8	5.2-8.5	557,401	71,838	5.3	4.1-6.6	438,073	50,466
48	12.2	9.9-14.6	1,002,342	105,386	7.8	5.9-9.6	634,783	81,683	6.2	4.8-7.5	503,922	56,874
54	12.9	10.4-15.4	1,055,302	109,266	8.6	6.6-10.6	706,369	85,311	6.5	5.1-7.9	535,500	59,951
60	13.3	10.7-15.9	1,090,674	114,122	8.9	6.9-11.0	729,625	88,379	6.8	5.4-8.3	558,574	61,436

(continued)

(eTable 2 continued)

Variable	All Major Surgery				Elective Major Surgery				Non-Elective Major Surgery			
	Cumulative Risk	95% CI	Incidence Count	SD	Cumulative Risk	95% CI	Incidence Count	SD	Cumulative Risk	95% CI	Incidence Count	SD
75-79												
6	3.2	2.1-4.3	204,301	36,196	2.5	1.5-3.4	158,093	30,028	0.8	0.3-1.4	52,395	17,229
12	5.3	3.8-6.8	337,136	46,241	4.2	3.0-5.3	266,004	35,199	1.5	0.7-2.3	94,717	24,880
18	7.4	5.6-9.2	471,198	56,770	5.7	4.3-7.2	365,314	45,243	2.2	1.2-3.1	138,940	30,156
24	9.0	7.0-10.9	570,826	59,473	6.4	4.9-7.9	409,816	45,750	3.2	2.1-4.3	203,440	34,470
30	10.5	8.4-12.6	671,338	63,903	7.5	5.8-9.2	480,865	52,028	4.0	2.9-5.1	254,209	35,147
36	12.4	10.0-14.7	787,942	69,987	8.8	6.9-10.6	558,106	57,117	5.1	3.8-6.3	321,895	39,659
42	13.1	10.8-15.5	837,337	71,483	9.2	7.3-11.1	586,237	58,460	5.6	4.3-7.0	358,393	42,150
48	14.4	11.9-16.9	917,101	74,767	9.8	7.8-11.8	625,233	60,250	6.3	4.9-7.8	403,928	44,957
54	15.7	13.0-18.4	1,000,479	81,457	10.6	8.5-12.8	676,667	64,890	7.2	5.6-8.8	459,393	49,222
60	16.6	13.8-19.4	1,055,385	84,528	11.2	9.0-13.4	711,617	67,243	7.5	5.9-9.2	480,559	49,321
80-84												
6	2.2	1.2-3.3	113,868	26,834	0.7	0.3-1.1	36,447	11,038	1.6	0.6-2.5	80,598	24,189
12	4.4	2.9-6.0	229,292	40,485	1.7	1.0-2.4	87,081	18,570	3.0	1.5-4.4	153,184	38,377
18	7.4	5.5-9.3	384,029	51,576	3.3	2.2-4.4	169,948	28,136	4.4	2.9-5.9	227,715	39,152
24	9.0	6.8-11.1	463,794	57,473	3.9	2.7-5.1	201,429	32,242	5.5	3.9-7.0	283,006	41,372
30	10.5	8.1-12.9	542,956	65,022	5.2	3.7-6.7	268,760	39,099	6.1	4.4-7.8	316,305	44,030
36	11.8	9.5-14.1	608,931	62,175	5.9	4.5-7.3	305,150	37,481	6.8	5.2-8.5	353,862	44,739
42	13.1	10.7-15.6	679,006	65,975	6.6	5.0-8.1	339,835	40,440	7.8	6.0-9.5	402,721	46,611
48	14.8	12.2-17.4	765,049	69,435	7.5	5.9-9.2	388,589	42,026	8.7	6.8-10.7	452,216	51,881
54	15.8	13.3-18.3	816,807	69,142	7.9	6.2-9.5	407,680	42,390	9.4	7.5-11.3	485,922	51,930
60	16.6	14.0-19.1	856,176	70,832	8.1	6.4-9.7	416,724	42,685	10.0	8.0-12.0	518,403	54,499

(continued)

(eTable 2 continued)

Variable	All Major Surgery				Elective Major Surgery				Non-Elective Major Surgery			
	Cumulative Risk	95% CI	Incidence Count	SD	Cumulative Risk	95% CI	Incidence Count	SD	Cumulative Risk	95% CI	Incidence Count	SD
85-89												
6	1.6	0.8-2.4	53,030	12,552	0.9	0.4-1.5	30,537	9,159	0.7	0.2-1.2	22,494	8,236
12	3.1	2.0-4.2	102,270	16,672	1.2	0.6-1.8	39,975	10,401	2.0	1.1-2.8	65,819	13,586
18	5.2	3.5-7.0	173,149	28,471	1.7	1.0-2.4	55,952	11,375	3.7	2.1-5.2	120,722	25,162
24	6.7	4.7-8.6	221,208	32,115	2.1	1.3-3.0	70,439	13,212	4.8	3.2-6.4	159,279	27,128
30	8.0	5.7-10.2	263,150	36,315	2.6	1.7-3.6	86,697	15,745	5.6	3.8-7.4	184,963	29,164
36	8.6	6.3-11.0	285,670	37,731	3.0	1.9-4.1	98,654	17,754	6.0	4.2-7.8	198,921	29,985
42	9.4	7.1-11.8	312,315	37,642	3.2	2.0-4.3	104,482	18,655	6.6	4.8-8.5	219,738	30,109
48	10.4	7.9-12.9	344,409	40,767	3.5	2.2-4.8	115,909	20,536	7.6	5.5-9.7	252,410	34,058
54	11.1	8.6-13.6	367,112	41,097	3.6	2.3-4.9	119,138	21,309	8.2	6.1-10.3	271,885	34,760
60	12.1	9.5-14.6	398,465	41,221	3.9	2.6-5.3	130,103	22,381	8.8	6.7-11.0	292,272	35,566
90 and older												
6	1.8	0.6-3.0	33,948	11,678	0.7	0.0-1.7	13,532	8,966	1.1	0.3-1.9	20,417	7,481
12	2.9	1.4-4.3	53,975	13,782	1.1	0.0-2.1	19,842	9,740	1.8	0.8-2.8	34,133	9,522
18	4.2	2.6-5.8	78,412	15,854	1.5	0.4-2.7	28,619	11,056	3.2	1.8-4.7	60,398	14,434
24	5.5	3.9-7.1	103,090	16,119	1.7	0.5-2.9	31,834	11,322	4.4	3.0-5.8	81,862	14,511
30	6.4	4.6-8.3	121,151	19,365	1.7	0.5-2.9	31,834	11,322	5.3	3.6-7.1	99,922	18,391
36	7.5	5.6-9.5	141,655	21,005	1.9	0.7-3.1	35,181	11,400	6.2	4.4-8.1	117,079	20,170
42	8.4	6.4-10.5	158,528	22,250	2.1	0.9-3.4	39,930	11,890	6.9	4.9-8.8	129,204	21,196
48	8.9	6.9-10.8	166,295	22,212	2.3	1.0-3.6	43,201	12,187	7.1	5.2-9.0	133,699	21,016
54	9.0	7.1-10.9	168,825	21,846	2.4	1.2-3.7	45,732	11,947	7.1	5.2-9.0	133,699	21,016
60	9.1	7.2-11.0	171,122	21,559	2.5	1.3-3.8	47,818	12,128	7.4	5.4-9.3	138,677	21,252

(continued)

(eTable 2 continued)

Variable	All Major Surgery				Elective Major Surgery				Non-Elective Major Surgery			
	Cumulative Risk	95% CI	Incidence Count	SD	Cumulative Risk	95% CI	Incidence Count	SD	Cumulative Risk	95% CI	Incidence Count	SD
Gender, by month												
Male												
6	2.7	2.0-3.4	415,668	56,754	2.0	1.3-2.6	303,496	51,801	0.8	0.5-1.2	130,992	26,087
12	4.1	3.2-4.9	627,587	70,056	2.9	2.1-3.6	442,495	60,679	1.4	1.0-1.8	220,739	32,630
18	5.7	4.5-6.8	879,994	94,059	3.9	2.9-4.9	604,335	81,457	2.1	1.6-2.6	323,436	39,629
24	7.1	5.8-8.4	1,101,010	111,977	4.7	3.5-5.8	720,377	91,210	3.0	2.3-3.6	459,532	54,044
30	8.8	7.3-10.2	1,359,389	122,854	5.8	4.5-7.1	901,478	105,835	3.5	2.8-4.2	547,213	56,896
36	10.3	8.7-12.0	1,598,427	137,403	6.7	5.4-8.0	1,034,320	108,236	4.5	3.6-5.3	690,618	64,924
42	11.7	10.0-13.3	1,806,885	137,327	7.5	6.1-8.9	1,163,260	112,528	5.1	4.3-5.9	790,591	62,349
48	13.0	11.2-14.9	2,017,589	152,053	8.4	6.9-10.0	1,308,196	123,017	5.7	4.8-6.5	876,825	65,493
54	13.9	11.9-15.9	2,151,599	165,806	9.1	7.5-10.8	1,414,763	135,792	6.3	5.3-7.2	968,062	71,550
60	14.4	12.2-16.5	2,228,491	176,997	9.5	7.7-11.2	1,468,091	142,840	6.5	5.5-7.5	1,006,626	77,230
Female												
6	1.7	1.1-2.3	341,034	60,879	1.1	0.7-1.5	221,774	41,968	0.6	0.3-0.9	121,904	26,367
12	3.3	2.4-4.1	663,576	85,155	2.0	1.4-2.6	411,174	62,762	1.3	0.9-1.8	274,053	47,712
18	5.2	4.4-6.1	1,069,558	94,708	3.1	2.4-3.8	637,107	73,464	2.3	1.8-2.8	473,495	50,406
24	6.8	5.8-7.9	1,393,121	111,173	4.1	3.3-4.9	833,872	89,615	3.1	2.5-3.7	634,868	58,627
30	7.8	6.6-9.0	1,590,349	124,348	4.7	3.7-5.7	965,964	105,304	3.6	3.0-4.3	738,754	65,041
36	9.2	8.0-10.5	1,883,245	131,012	5.5	4.5-6.5	1,122,430	110,477	4.5	3.8-5.3	926,459	73,898
42	10.5	9.1-11.8	2,137,931	145,379	6.3	5.1-7.5	1,293,113	128,748	5.2	4.5-6.0	1,068,412	77,013
48	11.9	10.4-13.5	2,434,685	163,063	7.0	5.8-8.3	1,438,315	134,899	6.2	5.3-7.1	1,267,739	89,406
54	12.7	11.1-14.2	2,584,267	168,625	7.5	6.1-8.8	1,525,384	142,652	6.7	5.7-7.6	1,359,407	93,525
60	13.4	11.7-15.0	2,729,557	174,718	7.9	6.6-9.3	1,620,418	144,085	7.0	6.1-8.0	1,432,627	97,146

(continued)

(eTable 2 continued)

Variable	All Major Surgery				Elective Major Surgery				Non-Elective Major Surgery			
	Cumulative Risk	95% CI	Incidence Count	SD	Cumulative Risk	95% CI	Incidence Count	SD	Cumulative Risk	95% CI	Incidence Count	SD
Frail phenotype, by month												
Non-frail												
6	1.0	0.6-1.5	135,106	30,337	0.7	0.3-1.0	88,442	23,921	0.4	0.1-0.7	46,664	18,658
12	2.3	1.6-2.9	294,291	42,991	1.6	1.1-2.1	205,347	35,352	0.7	0.4-1.1	95,131	23,655
18	3.7	2.9-4.6	482,603	56,841	2.7	2.0-3.4	347,631	45,940	1.1	0.7-1.5	141,158	28,127
24	5.1	4.0-6.1	653,288	72,320	3.5	2.6-4.3	446,979	60,399	1.8	1.1-2.4	228,903	41,754
30	6.6	5.3-7.9	855,132	89,278	4.7	3.5-5.9	605,718	81,676	2.2	1.5-2.9	282,344	43,455
36	8.3	6.8-9.8	1,074,314	104,782	5.8	4.6-7.0	750,465	87,494	3.0	2.2-3.9	394,406	52,960
42	10.0	8.3-11.7	1,290,799	121,351	7.0	5.5-8.5	905,373	104,955	3.6	2.7-4.5	460,909	59,267
48	11.5	9.7-13.3	1,487,567	132,625	8.2	6.5-9.8	1,057,396	118,077	4.0	3.1-4.9	517,362	61,479
54	12.1	10.1-14.1	1,566,110	143,843	8.7	6.8-10.6	1,124,300	132,128	4.3	3.3-5.3	561,212	66,070
60	12.5	10.6-14.5	1,623,122	146,737	9.2	7.3-11.1	1,191,273	135,699	4.5	3.4-5.5	579,000	70,326
Pre-frail												
6	2.6	1.8-3.4	417,581	60,352	1.9	1.2-2.5	300,109	52,522	0.8	0.5-1.2	136,292	28,210
12	4.3	3.3-5.2	684,935	79,479	2.9	2.1-3.7	465,262	66,513	1.5	1.0-2.0	246,632	40,049
18	6.3	5.1-7.4	1,006,697	96,005	4.1	3.1-5.1	657,297	78,485	2.4	1.8-3.0	386,446	47,463
24	8.0	6.7-9.3	1,292,676	108,002	5.1	4.0-6.2	819,736	89,651	3.3	2.6-4.1	538,000	57,855
30	9.3	7.9-10.7	1,493,323	115,860	5.9	4.7-7.0	943,328	95,936	4.0	3.2-4.8	645,767	65,705
36	10.9	9.4-12.5	1,757,620	127,276	6.7	5.5-7.9	1,073,667	100,864	5.2	4.2-6.1	829,173	74,268
42	12.1	10.5-13.7	1,945,544	136,438	7.3	6.1-8.6	1,180,951	104,779	6.0	5.1-6.9	967,186	77,011
48	13.6	11.9-15.3	2,186,833	143,615	8.0	6.6-9.3	1,281,850	109,100	7.1	6.0-8.1	1,137,099	85,127
54	14.7	12.8-16.5	2,356,164	152,094	8.6	7.2-10.0	1,386,014	115,602	7.8	6.6-9.0	1,250,007	98,544
60	15.6	13.6-17.5	2,501,059	164,685	9.1	7.6-10.6	1,461,855	121,825	8.3	7.0-9.5	1,326,968	102,572

(continued)

(eTable 2 continued)

Variable	All Major Surgery				Elective Major Surgery				Non-Elective Major Surgery			
	Cumulative Risk	95% CI	Incidence Count	SD	Cumulative Risk	95% CI	Incidence Count	SD	Cumulative Risk	95% CI	Incidence Count	SD
Frail												
6	3.0	1.8-4.2	204,014	41,640	2.0	1.0-3.0	136,718	34,405	1.0	0.4-1.6	69,940	19,700
12	4.5	3.3-5.7	311,937	42,143	2.7	1.6-3.7	183,060	36,683	2.2	1.4-3.1	153,029	29,121
18	6.7	5.3-8.0	460,252	48,484	3.4	2.4-4.5	236,514	37,390	3.9	2.8-5.0	269,327	38,116
24	8.0	6.3-9.7	548,167	59,568	4.2	2.8-5.5	287,534	47,679	4.8	3.5-6.0	327,497	42,372
30	8.7	7.0-10.4	601,283	60,365	4.6	3.3-6.0	318,396	47,456	5.2	4.0-6.4	357,856	43,065
36	9.4	7.6-11.3	649,738	64,373	4.8	3.5-6.2	332,618	47,836	5.7	4.3-7.1	393,499	47,864
42	10.3	8.4-12.2	708,473	66,851	5.4	3.9-6.9	370,050	52,462	6.3	4.9-7.7	430,909	49,081
48	11.3	9.2-13.5	777,873	76,434	5.9	4.3-7.5	407,266	57,066	7.1	5.5-8.8	490,103	58,257
54	11.8	9.7-14.0	813,592	77,645	6.2	4.6-7.9	429,834	57,844	7.5	5.8-9.2	516,250	59,522
60	12.1	9.9-14.4	833,867	81,181	6.3	4.7-8.0	435,381	59,045	7.7	6.0-9.5	533,285	61,534

(continued)

(eTable 2 continued)

Variable	All Major Surgery				Elective Major Surgery				Non-Elective Major Surgery			
	Cumulative Risk	95% CI	Incidence Count	SD	Cumulative Risk	95% CI	Incidence Count	SD	Cumulative Risk	95% CI	Incidence Count	SD
Dementia status, by month												
No dementia												
6	2.0	1.5-2.5	578,953	75,398	1.5	1.1-1.9	432,186	60,359	0.6	0.4-0.8	165,054	31,002
12	3.4	2.8-4.0	975,511	92,934	2.4	1.9-3.0	698,862	76,067	1.1	0.8-1.5	325,865	46,857
18	5.3	4.5-6.1	1,515,898	114,063	3.7	3.0-4.3	1,055,147	94,190	1.9	1.5-2.2	531,780	46,531
24	6.9	5.9-7.8	1,968,382	144,265	4.6	3.8-5.3	1,318,708	114,668	2.7	2.2-3.1	764,160	68,210
30	8.1	7.0-9.2	2,332,599	166,958	5.5	4.5-6.4	1,571,734	142,459	3.2	2.7-3.7	919,866	74,972
36	9.7	8.4-11.0	2,776,703	195,774	6.4	5.3-7.4	1,827,178	157,272	4.1	3.4-4.8	1,185,051	96,637
42	11.2	9.8-12.5	3,200,897	211,137	7.4	6.2-8.6	2,118,043	178,297	4.8	4.2-5.5	1,391,696	90,785
48	12.6	11.0-14.2	3,611,234	241,097	8.3	6.9-9.6	2,369,383	198,286	5.6	4.9-6.4	1,610,735	104,728
54	13.5	11.8-15.2	3,877,647	257,235	8.9	7.5-10.3	2,548,062	213,967	6.2	5.4-7.1	1,791,418	117,220
60	14.1	12.4-15.9	4,055,630	270,078	9.4	7.9-10.8	2,684,131	220,424	6.5	5.7-7.4	1,867,558	124,216
Possible dementia												
6	1.9	1.0-2.9	72,788	19,256	1.3	0.5-2.1	48,346	15,623	0.7	0.1-1.2	24,442	10,736
12	3.9	2.4-5.4	145,617	28,795	2.4	1.2-3.6	89,814	23,637	1.5	0.7-2.3	55,802	15,137
18	5.4	3.5-7.3	202,446	36,776	2.7	1.4-4.0	99,987	24,784	2.9	1.7-4.1	109,667	22,274
24	6.7	4.7-8.6	249,392	39,361	3.8	2.5-5.2	143,052	27,064	3.6	2.3-4.9	134,746	24,971
30	8.0	5.9-10.2	299,915	43,182	4.7	3.2-6.3	177,349	29,695	4.0	2.7-5.3	150,972	25,595
36	9.7	7.5-12.0	363,672	47,048	5.5	4.0-7.0	205,716	30,271	5.3	3.9-6.7	198,321	29,111
42	10.1	7.8-12.5	379,376	48,264	5.7	4.1-7.2	212,006	30,762	5.7	4.2-7.2	212,823	30,514
48	11.9	9.3-14.6	446,685	52,664	6.7	4.9-8.5	250,804	35,944	6.7	4.9-8.4	249,533	34,046
54	12.2	9.6-14.8	457,013	53,113	6.9	5.1-8.8	259,999	36,528	6.7	5.0-8.4	250,667	34,065
60	12.7	9.9-15.4	473,999	55,534	7.2	5.3-9.0	267,842	37,415	7.0	5.3-8.8	263,548	35,212

(continued)

(eTable 2 continued)

Variable	All Major Surgery				Elective Major Surgery				Non-Elective Major Surgery			
	Cumulative Risk	95% CI	Incidence Count	SD	Cumulative Risk	95% CI	Incidence Count	SD	Cumulative Risk	95% CI	Incidence Count	SD
Probable dementia												
6	3.0	1.6-4.5	104,961	26,009	1.3	0.4-2.2	44,738	16,293	1.8	0.8-2.8	63,400	17,333
12	4.9	3.2-6.7	170,035	30,449	1.9	0.7-3.1	64,993	20,974	3.3	1.9-4.7	113,125	24,668
18	6.7	4.6-8.8	231,208	34,337	2.5	1.2-3.8	86,308	22,453	4.5	2.7-6.3	155,484	30,852
24	8.0	5.7-10.3	276,357	37,567	2.7	1.3-4.1	92,489	23,725	5.7	3.6-7.7	195,493	34,031
30	9.2	6.8-11.6	317,224	38,262	3.4	2.0-4.9	118,360	24,678	6.2	4.1-8.4	215,129	35,017
36	9.9	7.5-12.3	341,297	38,910	3.6	2.1-5.1	123,856	24,799	6.8	4.6-8.9	233,706	35,235
42	10.6	8.2-12.9	364,544	38,380	3.7	2.2-5.1	126,324	25,003	7.4	5.2-9.5	254,485	35,727
48	11.4	9.0-13.9	394,355	40,007	3.7	2.2-5.1	126,324	25,003	8.2	6.0-10.5	284,296	37,732
54	11.6	9.1-14.1	401,206	40,926	3.8	2.3-5.4	132,087	26,485	8.3	6.0-10.5	285,384	37,825
60	12.4	9.8-15.0	428,419	43,469	4.0	2.3-5.6	136,535	27,846	8.9	6.5-11.4	308,148	40,856

(continued)

(eTable 2 continued)

Variable	All Major Surgery				Elective Major Surgery				Non-Elective Major Surgery			
	Cumulative Risk	95% CI	Incidence Count	SD	Cumulative Risk	95% CI	Incidence Count	SD	Cumulative Risk	95% CI	Incidence Count	SD
Subtype of Surgery, by month ^b												
Musculoskeletal												
6	0.6	0.4-0.9	232,095	40,501	---	---	---	---	---	---	---	---
12	1.3	1.0-1.6	474,065	55,409	---	---	---	---	---	---	---	---
18	2.3	1.9-2.7	816,582	77,380	---	---	---	---	---	---	---	---
24	3.0	2.5-3.5	1,079,941	93,596	---	---	---	---	---	---	---	---
30	3.6	2.9-4.2	1,280,276	116,862	---	---	---	---	---	---	---	---
36	4.2	3.4-4.9	1,491,843	132,235	---	---	---	---	---	---	---	---
42	5.0	4.2-5.8	1,784,833	147,664	---	---	---	---	---	---	---	---
48	5.6	4.7-6.4	2,001,316	159,639	---	---	---	---	---	---	---	---
54	6.0	5.1-6.9	2,158,863	164,381	---	---	---	---	---	---	---	---
60	6.4	5.5-7.4	2,311,838	173,729	---	---	---	---	---	---	---	---
Abdominal / Gastrointestinal												
6	0.4	0.3-0.6	159,405	31,260	---	---	---	---	---	---	---	---
12	0.6	0.4-0.8	224,664	37,861	---	---	---	---	---	---	---	---
18	0.9	0.7-1.2	328,671	43,991	---	---	---	---	---	---	---	---
24	1.3	1.0-1.6	475,828	50,374	---	---	---	---	---	---	---	---
30	1.6	1.3-1.9	573,637	57,069	---	---	---	---	---	---	---	---
36	2.1	1.7-2.5	743,212	76,188	---	---	---	---	---	---	---	---
42	2.4	1.9-2.8	844,880	76,468	---	---	---	---	---	---	---	---
48	2.8	2.3-3.3	1,004,207	82,038	---	---	---	---	---	---	---	---
54	3.1	2.6-3.6	1,102,109	88,470	---	---	---	---	---	---	---	---
60	3.2	2.7-3.7	1,149,604	92,666	---	---	---	---	---	---	---	---

(continued)

(eTable 2 continued)

Variable	All Major Surgery				Elective Major Surgery				Non-Elective Major Surgery			
	Cumulative Risk	95% CI	Incidence Count	SD	Cumulative Risk	95% CI	Incidence Count	SD	Cumulative Risk	95% CI	Incidence Count	SD
Vascular												
6	0.3	0.1-0.4	102,200	24,281	---	---	---	---	---	---	---	---
12	0.5	0.3-0.7	173,371	33,762	---	---	---	---	---	---	---	---
18	0.7	0.5-1.0	258,916	47,180	---	---	---	---	---	---	---	---
24	0.9	0.6-1.2	319,675	54,193	---	---	---	---	---	---	---	---
30	1.1	0.8-1.4	389,450	54,784	---	---	---	---	---	---	---	---
36	1.3	0.9-1.6	459,083	60,929	---	---	---	---	---	---	---	---
42	1.5	1.1-1.9	533,313	66,049	---	---	---	---	---	---	---	---
48	1.5	1.2-1.9	550,111	66,802	---	---	---	---	---	---	---	---
54	1.6	1.2-2.0	581,009	68,026	---	---	---	---	---	---	---	---
60	1.7	1.3-2.1	593,178	70,288	---	---	---	---	---	---	---	---
Neurologic												
6	0.3	0.1-0.4	99,287	29,381	---	---	---	---	---	---	---	---
12	0.4	0.3-0.6	160,092	34,324	---	---	---	---	---	---	---	---
18	0.6	0.4-0.8	214,518	37,876	---	---	---	---	---	---	---	---
24	0.8	0.5-1.0	269,845	41,616	---	---	---	---	---	---	---	---
30	0.8	0.6-1.1	300,598	46,587	---	---	---	---	---	---	---	---
36	1.0	0.7-1.2	341,486	50,666	---	---	---	---	---	---	---	---
42	1.0	0.8-1.3	375,697	52,115	---	---	---	---	---	---	---	---
48	1.4	1.1-1.7	492,553	56,552	---	---	---	---	---	---	---	---
54	1.5	1.1-1.8	522,249	57,577	---	---	---	---	---	---	---	---
60	1.5	1.2-1.9	545,325	59,829	---	---	---	---	---	---	---	---

(continued)

(eTable 2 continued)

Variable	All Major Surgery				Elective Major Surgery				Non-Elective Major Surgery			
	Cumulative Risk	95% CI	Incidence Count	SD	Cumulative Risk	95% CI	Incidence Count	SD	Cumulative Risk	95% CI	Incidence Count	SD
Cardiothoracic												
6	0.2	0.1-0.3	75,822	24,215	---	---	---	---	---	---	---	---
12	0.4	0.2-0.6	149,774	31,342	---	---	---	---	---	---	---	---
18	0.7	0.4-0.9	238,924	38,712	---	---	---	---	---	---	---	---
24	0.8	0.6-1.1	300,550	39,548	---	---	---	---	---	---	---	---
30	1.0	0.7-1.2	354,090	45,105	---	---	---	---	---	---	---	---
36	1.1	0.8-1.3	381,753	44,211	---	---	---	---	---	---	---	---
42	1.2	0.9-1.5	427,102	46,818	---	---	---	---	---	---	---	---
48	1.3	1.0-1.6	469,271	51,851	---	---	---	---	---	---	---	---
54	1.4	1.1-1.7	497,478	55,185	---	---	---	---	---	---	---	---
60	1.5	1.2-1.8	532,876	56,642	---	---	---	---	---	---	---	---
Other												
6	0.3	0.1-0.4	98,136	24,177	---	---	---	---	---	---	---	---
12	0.5	0.3-0.7	172,577	31,189	---	---	---	---	---	---	---	---
18	0.7	0.5-0.9	244,805	33,241	---	---	---	---	---	---	---	---
24	0.9	0.6-1.1	311,402	45,704	---	---	---	---	---	---	---	---
30	1.1	0.8-1.4	395,063	47,716	---	---	---	---	---	---	---	---
36	1.4	1.0-1.7	487,727	57,451	---	---	---	---	---	---	---	---
42	1.5	1.2-1.9	546,104	63,995	---	---	---	---	---	---	---	---
48	1.7	1.3-2.0	597,157	68,244	---	---	---	---	---	---	---	---
54	1.8	1.4-2.2	645,304	71,893	---	---	---	---	---	---	---	---
60	1.9	1.5-2.4	696,009	74,713	---	---	---	---	---	---	---	---

Abbreviations: SD, standard deviation; CI, confidence interval

^a Cumulative risk refers to the proportion (presented as a percentage) of community-living, fee-for-service Medicare beneficiaries who underwent at least one new major surgery during the 5-year surveillance window. Incidence count refers to the number of unique Medicare beneficiaries who underwent a major surgery. The elective and non-elective values will not sum to the all major surgery values. This is because an individual could have both an elective and a non-elective surgery, and thus will be counted as an instance in both -- however, they will only be counted once in the overall since elective and non-elective surgeries are aggregated in that tabulation. Please see text for details.

^b By subtype of surgery, results are not provided for elective and non-elective major surgery because some of surgery subtypes were too infrequent to generate national estimates.

