

1
2
3
4
5
6
7
8
9
10
11
12
13
14
15

Systematic Review of Studies on Telomere Lengths in Patients with Multiple Sclerosis

Jan Bühring^{1,§}, Michael Hecker^{1,§,*}, Brit Fitzner¹, Uwe Klaus Zettl¹

¹ Rostock University Medical Center, Department of Neurology, Division of Neuroimmunology,
Gehlsheimer Str. 20, 18147, Rostock, Germany

* corresponding author: e-mail: michael.hecker@rocketmail.com,

ORCID ID: 0000-0001-7015-3094,

phone: +49 381 494-5890, fax: +49 381 494-5882

§ these authors contributed equally to this work

Short title: Evidence of shorter telomeres in MS

16 **Highlights**

- 17 • The relationship between aging and the pathophysiology and course of MS is not fully understood
- 18 • We have identified seven studies that analyzed telomere lengths (TL) in patients with MS
- 19 • Our meta-analysis revealed significantly shorter leukocyte TL in MS patients compared to healthy controls
- 20 • There is evidence that individual variability in biological aging reflects clinical heterogeneity in MS
- 21 • The potential use of TL as a biomarker of age-related disease mechanisms deserves further investigation

22 Abstract

23 **BACKGROUND:** Telomeres are protective cap structures at the end of chromosomes that are
24 essential for maintaining genomic stability. Accelerated telomere shortening is related to
25 premature cellular senescence. Shortened telomere lengths (TL) have been implicated in the
26 pathogenesis of various chronic immune-mediated and neurological diseases.

27 **OBJECTIVE:** We aimed to systematically review the current literature on the association of TL
28 as a measure of biological age and multiple sclerosis (MS).

29 **METHODS:** A comprehensive literature search was conducted to identify original studies that
30 presented data on TL in samples from MS patients. Quantitative and qualitative information was
31 extracted from the articles to summarize and compare the studies.

32 **RESULTS:** A total of 51 articles were screened, and 7 of them were included in this review. In
33 6 studies, average TL were analyzed in peripheral blood cells, whereas in one study, bone
34 marrow-derived cells were used. Four of the studies reported significantly shorter leukocyte TL
35 in at least one MS subtype in comparison to healthy controls ($p=0.003$ in meta-analysis).
36 Shorter telomeres in MS patients were found to be associated, independently of age, with
37 greater disability, lower brain volume, increased relapse rate and more rapid conversion from
38 relapsing to progressive MS. However, it remains unclear how telomere attrition in MS may be
39 linked to oxidative stress, inflammation and age-related disease processes.

40 **CONCLUSIONS:** Despite few studies in this field, there is substantial evidence on the
41 association of TL and MS. Variability in TL appears to reflect heterogeneity in clinical
42 presentation and course. Further investigations in large and well-characterized cohorts are
43 warranted. More detailed studies on TL of individual chromosomes in specific cell types may
44 help to gain new insights into the pathomechanisms of MS.

45
46 **Keywords:** multiple sclerosis, telomeres, telomere length measurement, biological aging,
47 immunosenescence, immune cells

48 **1. Introduction**

49 Multiple sclerosis (MS) is an autoimmune disease, which affects the central nervous system
50 (CNS). The disease usually begins in early adulthood [1], and approximately 2.8 million people
51 live with MS worldwide [2]. MS is characterized by chronic inflammation, demyelination, gliosis
52 and progressive axonal loss [3]. A hallmark of MS is the formation of focal lesions in the brain
53 and spinal cord, which is mediated by the infiltration of immune cells [3]. The lesion sites are
54 highly variable and thus every neurological symptom is possible. In consequence, the clinical
55 presentation of individual MS patients is very heterogeneous, and symptoms can range from
56 slight to very severe. Common initial symptoms of MS are optic neuritis, fatigue and
57 paresthesia. The severity of MS is usually rated by the Expanded Disability Status Scale
58 (EDSS), which considers cognitive and functional disabilities of MS patients and ranges from 0
59 (no abnormalities) to 10 (death as a result of MS) [4].

60 Most patients (85%) present with relapsing-remitting multiple sclerosis (RRMS), while 15% are
61 diagnosed with primary progressive multiple sclerosis (PPMS) at disease onset [1,5]. RRMS is
62 characterized by episodes of new or worsened preexisting symptoms (relapses), followed by
63 periods of clinical stability (remission). In nearly 60% of RRMS cases, the disease turns after an
64 average disease duration of 20 years into a secondary progressive course of MS (SPMS) [5].
65 Although patients with progressive MS typically do not experience relapses, they get steadily
66 worse due to ongoing neurodegeneration, and superimposed attacks are possible [6].

67 The susceptibility to develop MS is up to three times higher for women compared to men [7,8],
68 and female patients have an approximately 20% higher relapse rate [9]. Besides sex, former
69 viral infections with Epstein-Barr virus [10,11] or human herpes virus 6A [12], vitamin D
70 deficiency [10,13] and certain lifestyle factors, such as adolescent obesity and smoking [14],
71 are established risk factors for MS [13,14]. Moreover, the individual risk of MS is determined by
72 genetic predisposition, especially by genes of the major histocompatibility complex (MHC) [15].
73 Among the most prominent ones, HLA class II allele HLA-DRB1*15:01 increases the risk of MS
74 [15-17], whereas class I HLA-A*02:01 has a protective effect [17]. Furthermore, about 200 non-
75 MHC loci were found to be associated with MS susceptibility by international genome-wide
76 association studies [18,19].

77 Within the last years, telomeres were shown to contribute to the pathomechanisms of various
78 complex diseases [20,21]. Telomeres are nucleoprotein structures found at the end of each
79 chromosome arm. In humans, they are composed of 5 – 15 kilobases (kb) long tandem repeats
80 of the hexanucleotide TTAGGG [22,23] and six-subunit protein complexes, called shelterin
81 [22,24]. The main roles of telomeres are the maintenance and protection of genetic information
82 as well as the regulation of cellular replication capacity [24,25].

83 Telomere length (TL) shortens with age as a physiological process and subject to genetic and
84 lifestyle factors (Figure 1). The length of telomeres decreases continuously because of the end-
85 replication problem [22]. This refers to the issue that during every DNA replication cycle, the
86 end of the lagging strand cannot be fully replicated. As a result, there is a loss of genomic
87 sequence with every cell division. Accordingly, human telomeres shorten by approximately 50
88 to 70 base pairs per year [26]. In consequence, there is an upper limit in the number of cell
89 divisions for a normal cell population, which is called the Hayflick limit [27]. Apart from aging,
90 every process that provokes an accelerated shortening of TL can promote cellular senescence
91 or apoptosis. In particular, telomeres are vulnerable to oxidative stress, which can be enhanced
92 by smoking and dietary habits [22,28]. Moreover, chronic inflammation [29] and persistent viral
93 infections [30,31] are well known to be associated with increased telomere attrition. In addition,
94 lower physical activity was found to be linked with shorter telomeres [32].

95 Elongation and maintenance of telomeres is mainly controlled by a ribonucleoprotein complex
96 called telomerase. It consists of the catalytic subunit telomerase reverse transcriptase (TERT)
97 and the telomerase RNA component (TERC), which serves as a template for the addition of
98 telomeric repeats. High telomerase levels are a hallmark of germline progenitor cells as well as
99 embryonic stem cells, whereas most human cells display low or absent telomerase activity [33].
100 On the other hand, telomerase reactivation has been detected in 90% of all malignant tumors
101 [34,35]. The transcription of TERT is regulated by many factors, including telomere length,
102 hormones and viruses [22].

103 Diverse methods for the measurement of TL have been developed within the last 20 years. The
104 traditional method is to assess the mean telomere restriction fragment (TRF) length of whole
105 genomic DNA by Southern blot [36]. In 2002, Cawthon invented a real-time quantitative

106 polymerase chain reaction (qPCR) assay [37]. In this method, a ratio of telomere signals (T)
107 and single-copy gene signals (S), which are obtained in separate reaction wells, is calculated to
108 determine relative T/S ratios that are proportional to the average TL of a biological sample [37].
109 Samples with a $T/S > 1.0$ have an average TL greater than that of the reference used. Cawthon
110 later described an adapted monochrome multiplex qPCR (mmqPCR) assay, where the same
111 well is used for amplification of both telomeric and single-copy DNA regions [38]. To measure
112 telomeres of individual chromosomes, there are techniques such as quantitative fluorescence
113 in situ hybridization (Q-FISH), universal single telomere length analysis (U-STELA) and
114 telomere shortest length assay (TeSLA) for quantitation of the shortest telomeres [39], but each
115 method has some limitations, as reviewed elsewhere [36,40].

116 Studies exploring TL as disease-associated biomarker typically use peripheral blood samples
117 as source of DNA. Only few studies so far have investigated TL distributions in specific human
118 cell subtypes and in non-blood disease-relevant tissues. However, recent reports suggest that
119 whole blood TL is suited as a proxy for TL in many tissue types [41], even though the decline in
120 TL with age varies between leukocyte subpopulations [42]. In comparison with healthy controls,
121 shorter TL in leukocytes have been associated with several diseases including cardiovascular
122 disease, type 2 diabetes, Alzheimer's disease (AD) and autoimmune diseases, such as
123 rheumatoid arthritis [20,21]. On the other hand, relatively long TL have been implicated in some
124 types of cancer [43]. Since MS is a chronic inflammatory and neurodegenerative disease,
125 telomeres may be linked to the development and course of this disease as well.

126 Here, we provide a comprehensive systematic review and meta-analysis of studies that
127 analyzed TL in patients with MS. The studies were evaluated with regard to the respective
128 study design and the employed TL measurement approach. We summarize the available
129 evidence on the association of TL with MS subtypes. Moreover, we discuss how shorter TL may
130 be involved in the molecular mechanisms underlying MS and whether telomeres as marker of
131 cellular senescence may be suitable for predicting disease progression.

132 **2. Methods**

133 **2.1. Search strategy and study selection criteria**

134 For this review, we systematically searched for published articles on TL in MS patients. This
135 was done by taking into account the Preferred Reporting Items for Systematic Reviews and
136 Meta-Analyses (PRISMA) and by following the steps "identification", "screening", "eligibility" and
137 "inclusion" [44]. Accordingly, we considered the current PRISMA recommendations and
138 checklist in the design and conduct of this review.

139 The literature search was executed using the PubMed database as well as the preprint
140 repositories bioRxiv and medRxiv to capture the latest research articles available. For
141 identification of relevant papers, we wanted the search to be sensitive and potentially over-
142 inclusive so that no relevant articles are missed. Therefore, only two terms, "multiple sclerosis"
143 and "telomer*", combined using the Boolean operator AND, were entered in the respective
144 search interfaces. The asterisk wildcard symbol (*) was used for search term truncation. The
145 latest check of this search was on November 19th, 2020. The reference lists of all included
146 articles were also scanned with the aim to identify further studies on the same topic. The
147 literature search was not limited by date of publication.

148 All articles were evaluated in full length in a standardized manner by two independent
149 reviewers (JB and MH). The criteria for study selection were defined previously. We included
150 studies that were written in English or German (I) and that appeared either in a scholarly journal
151 or in an open access preprint repository. Moreover, we excluded papers that were no original
152 research articles (II) and studies that did not include MS patients (III). Finally, we rejected
153 studies that did not present data on TL (IV). Studies not meeting the inclusion criteria were
154 excluded, and the reasons for exclusion were recorded. During the eligibility step, there was no
155 restriction with regard to the course of MS, disease duration, disease severity, MS treatment,
156 cohort size, race/ethnicity of patients and controls, type of sample material or TL measurement
157 method used.

158 **2.2. Data extraction**

159 For comparing the remaining studies, relevant data was obtained from tables, graphs and
160 statistical analyses described in the text. Data extraction was carried out using a predesigned
161 data sheet by one reviewer (JB) and verified by another (MH). Any discrepancies were resolved
162 by discussion. Accordingly, we created a table, which contained the main information for each
163 study. More specifically, we collected information about the study design, the country of origin,
164 the collection of biological samples (e.g., cross-sectional vs. longitudinal), the kind of cells that
165 were used (e.g., peripheral blood leukocytes), the method utilized to determine TL (e.g., qPCR
166 assay or TRF analysis) as well as clinical-demographic data about the patient cohort (e.g., the
167 distribution of age and sex, the patients' clinical course of MS [6] and the diagnostic criteria that
168 were applied [45-47]). Additionally, we identified group comparisons (e.g., MS patients vs.
169 controls, RRMS vs. PPMS, women vs. men) and strategies to control for confounding (e.g.,
170 matching or statistical regression) and recorded whether or not the findings reported in the
171 respective studies reached statistical significance.

172 We have primarily conducted a narrative summary of the results, because the designs and
173 methods of the included studies were quite different. Nonetheless, to further examine the
174 relationship between TL and MS, a meta-analysis was performed as well. We used the metafor
175 R package [48] for this analysis and for preparing a forest plot and a funnel plot. Means and
176 standard deviations of TL that were reported in the studies for MS patients and controls were
177 used to calculate standardized mean differences (SMD, also known as Cohen's d) and 95%
178 confidence intervals. A random-effects model was then fitted to the data to estimate the
179 composite effect size. Heterogeneity across studies was evaluated by calculating the Q statistic
180 p -value. Egger's regression test was used to detect potential publication bias [49]. Due to the
181 lack of data, we decided against additional subgroup analyses.

182 **3. Results**

183 **3.1. Search results, study selection and overview**

184 We ended up with 49 publications from our literature search in the PubMed database. Another
185 2 articles were found in bioRxiv and medRiv. No additional articles were found to be relevant by
186 reference list screening. All articles were in English language (I). The full-texts of all articles
187 were assessed for eligibility in accordance with the PRISMA statement guidelines [44]. The
188 study selection process excluded most of the listed records as presented in the flow diagram
189 (Figure 2): Five articles were excluded because they did not present original research (II).
190 Subsequently, 18 studies were discarded because they did not contain an analysis of
191 MS patient samples (III), and finally, 21 studies were rejected because they were not concerned
192 with measuring TL (IV). In consequence, we included 7 studies in our systematic review [50-56]
193 (Supplemental Table 1). Four of these studies also provided sufficient data to be pooled into a
194 meta-analysis [51,52,55,56]. We then gathered diverse information from the selected articles,
195 e.g., study design, sample size, patient characteristics, TL measurement method and cell
196 population under scrutiny.

197 The seven included studies were published within the last five years, except the study by
198 Hug et al., which was already published in 2003 [50]. The studies were conducted by six
199 different research groups with either Asian (n=2), European (n=4) or American (n=1) MS patient
200 cohorts. In all studies, the collection of patient samples was performed in a cross-sectional
201 manner, while three studies additionally used longitudinal blood sample series obtained over a
202 period of up to >10 years [52,54,56]. With one exception [54], all studies compared TL between
203 MS patients and controls. The number of patients included in the investigation of telomeres
204 ranged from 10 [53] to 516 [54]. In the following section, we have summarized the objectives
205 and findings for each of the individual studies.

206 **3.2. Characteristics and results of the included studies**

207 The first study was published by Hug et al. [50]. They explored whether there are TL
208 differences in T cells between RRMS patients (n=20) and age-matched healthy controls (n=20).

209 For this purpose, mean TRF lengths were determined for CD4+ and CD8+ cells that were
210 isolated by magnetic separation (positive selection) from peripheral blood mononuclear cells.
211 The research group observed a decline of TL with age in MS patients as well as in controls in
212 both cell populations. However, they did not find any statistically significant difference in relative
213 TL or age-dependent telomere shortening between the patients and controls. The TL were also
214 similar in the two T cell subsets: The CD4+ and CD8+ T cells had a mean TL of 10.1 kb and
215 9.2 kb in patients with MS and 8.8 kb and 9.4 kb in controls, respectively. Hug et al. also
216 investigated the enzymatic activity of telomerase in the circulating T cells. Telomerase activity
217 was detectable at low levels and was slightly higher in CD4+ cells compared with CD8+ cells,
218 but there was no significant difference between the MS patient group and the healthy control
219 group. The authors concluded that there is no evidence of an accelerated T cell turnover, but
220 that an altered T cell composition in MS may interfere with peripheral immune tolerance
221 mechanisms.

222 The study by Guan et al. from 2015 [51] enrolled 59 patients with MS (benign RRMS: n=19,
223 SPMS: n=20, PPMS: n=20) and 60 healthy individuals. The MS and control groups were similar
224 with regard to age and sex distribution as well as lifestyle and dietary habits. Subjects with
225 infections, diabetes, habitual smoking status or corticosteroid use within the past 3 months
226 were excluded. The average TL in peripheral blood cells was then assessed by TRF analysis.
227 The authors found significantly shorter TL, on average, in PPMS patients (6.5 kb in men and
228 7.0 kb in women) compared to controls (8.4 kb in men and 10.1 kb in women), whereas the TL
229 in RRMS and SPMS patients did not differ significantly from those in controls. Guan et al. also
230 reported a clear negative association of TL and age for the control group, regardless of sex,
231 and for male SPMS patients. Moreover, they evaluated markers of oxidative stress in plasma
232 and urine. This revealed significantly elevated levels of urinary 8-iso-PGF2 α (a marker of lipid
233 peroxidation) and reduced antioxidant capacity of plasma lipoproteins in MS, especially in
234 PPMS. However, there was no significant relationship between TRF results and oxidative
235 stress markers in either group of subjects. In sum, these data suggested that enhanced
236 oxidative damage and shorter somatic TL distinguish in particular MS patients with a primary
237 progressive course of disease.

238 The subsequent study by Guan et al. from 2018 [52] analyzed TL and systemic peroxidation in
239 34 MS patients and 44 healthy subjects. The two cohorts had a similar female:male ratio and
240 average age, and the exclusion criteria were as in the former study [51]. However, in this study,
241 MS patient samples were collected at two time points to evaluate the biological and clinical
242 effects of antioxidant vitamin E supplementation. Accordingly, half of the patients received
243 α -tocopherol (400 mg/day) for 3 months and the other half (matched for age and sex) did not.
244 TL were measured by TRF analysis using genomic DNA from peripheral blood (i.e., circulating
245 leukocytes). Additionally, Guan et al. employed serum samples for testing oxidation of low-
246 density lipoproteins (LDL) and urine samples for determining 8-iso-PGF2 α concentrations. As a
247 result, in line with their previous study, significantly shorter average TL were observed in MS
248 patients (6.9 ± 1.0 kb) compared to controls (9.1 ± 1.4 kb). The MS group was also
249 characterized by significantly higher levels of urinary 8-iso-PGF2 α and lower antioxidant
250 capacity in serum. Following vitamin E administration, 8-iso-PGF2 α levels were significantly
251 reduced by nearly 20%. However, the treatment over 3 months appeared not to be long enough
252 to detect significant changes in TL or clinical parameters (e.g., EDSS scores). This study thus
253 confirmed shorter TL in MS patients and indicated that antioxidants, such as vitamin E, may be
254 useful to attenuate enhanced oxidation conditions present in MS.

255 Redondo et al. [53] used bone marrow-derived mesenchymal stromal cells (MSC) from
256 10 patients with progressive MS and 6 controls with osteoarthritis. These multipotent MSCs
257 were expanded in vitro and harvested at passage number P2 and P6 to measure TL by TRF
258 analysis. The authors found no significant difference in TL between samples derived from
259 controls and MS patients. Duration of disease progression and subtype of progressive MS were
260 also not associated with TL. However, significant effects of age ($p = 0.024$) and passage
261 number ($p < 0.0001$) were detected by multivariable regression: TL correlated negatively with
262 age and decreased from P2 to P6 in both control and MS MSCs. This decrease only reached
263 statistical significance in MS MSCs. Moreover, these cells were characterized by reduced
264 in vitro expansion potential. Redondo et al. thus concluded that telomere shortening is
265 accelerated in MSCs from MS patients, suggesting that premature cellular aging and
266 senescence may contribute to the pathophysiology of MS.

267 Kryska et al. [54] performed the so far largest and most elaborated study on TL in MS. They
268 used whole blood DNA samples of 516 patients, including 80 individuals with clinically isolated
269 syndrome (CIS) and 367 RRMS patients. These patients were studied for up to 10 years from
270 baseline by clinical assessments and magnetic resonance imaging (MRI). For a subset of 46
271 individuals, DNA samples from multiple time points were analyzed. This subset consisted of a
272 group of patients who converted to SPMS (n=23) and a group of patients who remained in the
273 RRMS stage (n=23), while matching for potential confounders such as age and sex. The
274 average leukocyte telomere lengths (LTL) were then measured by real-time qPCR [37], and the
275 resulting T/S ratios were scaled by -0.2 to ease the interpretation of regression coefficients.
276 The cross-sectional analyses over the entire patient cohort revealed that higher age and
277 disease duration were clearly associated with shorter LTL ($p < 0.001$), while there was no
278 significant association between LTL and sex, body mass index (BMI), smoking status or type of
279 MS treatment. More importantly, shorter telomeres were associated with greater disability and
280 brain atrophy, after adjusting for age, sex and disease duration: For every 0.2 unit lower LTL,
281 the baseline EDSS score was 0.27 units higher ($p < 0.001$) and total brain volume and white
282 matter volume were 7.4 mm^3 and 4.0 mm^3 lower, respectively ($p < 0.05$). The effect of age on
283 EDSS that is mediated by LTL was estimated to be 15.1% by mediation analysis. The authors
284 also assessed the association of baseline LTL with change in clinical and MRI outcomes over
285 time. Based on adjusted models, they found LTL to be weakly associated with the rate of
286 change in EDSS ($p = 0.06$) and cortical gray matter volume decline ($p = 0.02$). Moreover,
287 among the patients with RRMS, for every 0.2 unit decrease in LTL, a 1.27 times higher relapse
288 rate was noted ($p = 0.001$). In the subset of 46 patients with LTL measured longitudinally over
289 up to 10 years of follow-up, a -0.2 unit change in LTL was associated with an EDSS score
290 increase by 0.34 ($p = 0.012$). In this subset, patients also had 1.4 times the odds of converting
291 from RRMS to SPMS for every 0.2 unit lower baseline LTL, although this finding did not reach
292 statistical significance ($p = 0.40$). However, it has not been reported whether there were also
293 differences in average LTL between patients with different subtypes of MS in the full cohort. In
294 sum, this study convincingly showed that TL is associated with disability progression
295 independent of age and disease duration, suggesting that individual variability in biological
296 aging may contribute to clinical heterogeneity in MS.

297 Habib et al. [55] assessed TL in whole blood DNA samples of 138 MS patients and 120 healthy
298 controls. Three MS groups were distinguished: RRMS (n=102), SPMS (n=27) and PPMS (n=5),
299 while 4 patients had an undefined course of MS. The RRMS patients were the youngest
300 (average age: 35.2 years), followed by healthy controls (44.6 years), PPMS patients (49.0
301 years) and SPMS patients (51.8 years) ($p < 0.001$). The groups were also not matched by sex
302 (MS: 37.7% male, controls: 54.2% male). Relative LTL were determined using the mmqPCR
303 method by Cawthon [38]. Significantly shorter LTL were observed in all 3 groups of MS patients
304 (mean T/S: RRMS: 0.76 ± 0.22 ; SPMS 0.67 ± 0.21 ; PPMS 0.67 ± 0.27) as compared with the
305 controls (0.94 ± 0.25) ($p < 0.001$ with adjustment for age as covariate). No significant difference
306 in TL was observed between men and women, but a strong negative relationship between age
307 and TL was seen in both controls and MS patients ($p < 0.001$). Accordingly, the patients with a
308 progressive course of disease (PPMS and SPMS), which were much older, had shorter
309 telomeres than the patients with RRMS. Shorter TL also correlated with higher EDSS scores
310 ($p = 0.001$), but this association was again driven by age. Additionally, Habib et al. conducted
311 an in vitro experiment using lymphoblastoid cell lines (LCL) generated from peripheral blood
312 B cells. This analysis revealed shorter TL in LCL from MS patients (n=3) compared to controls
313 (n=3) but overall similar dynamics of telomere loss over up to 15 passages of cultivation in both
314 groups. The authors therefore speculated whether accelerated telomere shortening may
315 precede MS onset.

316 The most recent study by Hecker et al. [56] comprised 40 RRMS patients, 20 PPMS patients
317 and 60 healthy controls. Those three groups were well matched for age (with an average of
318 48.0 years and 48.1 years for patients and controls, respectively) and sex (female:male ratio
319 always 1:1). The average LTL was determined for all subjects by multiplex qPCR [38] using
320 DNA from peripheral whole blood samples. The data were analyzed in relation to the long-term
321 clinical course of the patients. To this end, relapses and progression of disability were
322 evaluated over a period of up to 10 years after the blood sampling. For a subset of 10 MS
323 patients, a second blood sample was collected after this follow-up period. In the longitudinal
324 analysis, LTL decrease over time was seen for all patients ($p < 0.001$), independent of disease
325 subtype. In the cross-sectional analysis, significantly shorter telomeres could be detected in the

326 group of RRMS patients (mean T/S = 0.92) compared to the PPMS patients (mean T/S = 1.16)
327 and controls (mean T/S = 1.12) ($p = 0.003$). No significant differences were found between the
328 PPMS group and controls as well as between women and men. However, age was negatively
329 associated with LTL in all 3 study cohorts. Hecker et al. divided the subjects into two groups
330 with relatively short (T/S ratio <1) or long telomeres (T/S ratio >1). Patients with RRMS were
331 less likely to belong to the long telomere group (odds ratio = 0.399, $p = 0.032$), and those with
332 relatively short LTL were also at much higher risk to convert to SPMS in the 10-year follow-up
333 (hazard ratio = 8.308, $p = 0.050$) in age-adjusted tests. On the other hand, the LTL of RRMS
334 patients at baseline had little value in terms of predicting the rate of change in EDSS and the
335 risk of subsequent relapses. Nevertheless, these data suggest that LTL as a biomarker for
336 immunosenescence may capture age-related disease mechanisms.

337 The following section presents an integrative comparison of study methods and results that
338 were presented in the papers included in this review.

339 **3.3. Comparative assessment of studies on TL in MS**

340 Five of the identified studies included a healthy control group (Table 1), while Redondo et al.
341 [53] used samples of patients with osteoarthritis as controls. The study by Krysko et al. [54] is
342 the only one that did not include a control group. However, their study comprised the largest
343 number of MS patients ($n=516$) with the aim to detect associations of LTL with changes in
344 clinical and MRI metrics over a follow-up period of 10 years. Differences between the studies
345 were also noted with regard to the MS population under scrutiny (Table 1): In the majority of
346 studies, the diagnosis of MS was confirmed using the original or revised McDonald criteria from
347 2001/2005 [46,47]. The early study by Hug et al. [50] was based on patients diagnosed with
348 relapsing MS according to the Poser criteria from 1983 [45], whereas Redondo et al. [53] did
349 not specify the applied diagnostic criteria and considered only cases with progressive MS.
350 Differences in LTL between subgroups of MS patients with different courses of disease (RRMS,
351 SPMS and PPMS) were examined in 3 of the 7 studies [51,55,56]. Patients with CIS were
352 included only in the analysis by Krysko et al. [54]. The second study by Guan et al. [52] is

353 currently the only one that investigated the effects of a therapeutic intervention (vitamin E
354 administration) on TL in blood cells of MS patients.

355 More men than women were included in the studies by Redondo et al. [53] and Guan et al.
356 [51,52], whereas the proportion of female MS patients was 68.6% in the study by Krysko et al.
357 [54]. There were also huge differences between the studies with regard to the age of the
358 patients: For instance, the patients in the studies by Guan et al. had an average age of 32.8
359 years [52] and 33.3 years [51], respectively, whereas the TL analysis by Redondo et al. was
360 conducted in a much older group of MS patients, with a mean age of 54.1 years [53]. Notably,
361 the latter two research groups as well as Hecker et al. [56] paid specific attention to ensure that
362 the cohorts to be compared were well matched in terms of age and sex. There was no control
363 group in the study of Krysko et al., but in the subset of patients that had LTL measured over
364 time for comparing SPMS converters (n=23) and non-converters (n=23), a careful matching for
365 age, sex, disease duration and EDSS score was carried out [54]. On the other hand, the
366 cohorts in the study by Habib et al. had uneven age and sex distributions [55], and Hug et al.
367 only reported that the MS patients and healthy controls were age-matched [50].

368 In 5 out of the 7 reviewed studies, whole blood samples were used for TL analysis (Table 2). In
369 these studies, leukocytes are the main source of telomeric DNA as human erythrocytes and
370 platelets have no cell nucleus. The measurement of leukocyte TL provides a rough insight into
371 the average length of telomeric ends in a heterogeneous population of granulocytes,
372 lymphocytes and monocytes. So far, only the study by Hug et al. [50] used specific immune
373 cells, namely peripheral blood CD4+ and CD8+ T cells, for assessing TL in MS patients. As an
374 exception, Redondo et al. [53] made use of MSCs that were isolated from bone marrow
375 samples, as they were interested in exploring the bone marrow microenvironment in the context
376 of autologous MSC-based therapy for progressive MS. In their study as well as in the study by
377 Habib et al. [55], experiments with patient-derived cells maintained in culture were performed to
378 examine the dynamics of telomere attrition in vitro.

379 In all 7 studies, the average length of telomeres over all cells of a cell population and all 92
380 telomeres per cell has been evaluated. So far, no study investigated TL heterogeneity in single
381 cells and telomeres of single chromosome arms in MS patient samples. In 4 of the 7 studies

382 [50-53], TL were determined by non-radioactive TRF analysis, with only minor differences in the
383 applied protocol: Following electrophoretic separation of digested DNA and Southern blotting,
384 DNA fragments were hybridized to digoxigenin-labeled telomere-specific probes, incubated with
385 anti-digoxigenin antibodies conjugated to alkaline phosphatase, and detected on the blot using
386 chemiluminescent enzyme substrates. In the other 3 studies, qPCR assays were employed:
387 Krysko et al. [54] used the qPCR method by Cawthon from 2002 [37], while Habib et al. [55]
388 and Hecker et al. [56] used the adapted mmqPCR assay by Cawthon from 2009 [38]. In both
389 qPCR-based approaches, relative TL are measured as T/S ratios.

390 In the studies that have been published so far, no significant TL differences between women
391 and men were described. However, with one exception, all studies reported a clear negative
392 association of chronological age and TL as a marker of biological age, as expected. To consider
393 such data dependencies in the groups to be compared, control for confounding was
394 implemented at the level of the statistical analysis in 5 of the 7 studies (Table 2): Habib et al.
395 [55] and Hecker et al. [56] employed age- and sex-adjusted linear models to assess differences
396 in LTL between patients and controls or associations to clinico-demographic parameters.
397 Redondo et al. considered the independent effects of participant age and passage number in
398 the comparative analysis of TL in cultured MSCs from MS patients and controls [53]. Hug et al.
399 included age as covariate affecting TL in CD4+ and CD8+ T cells [50]. Finally, Krysko et al.
400 used regression models adjusted for age, sex and disease duration [54]. They also evaluated
401 smoking, BMI, type of MS treatment and HLA-DRB1*15:01 carrier status as potential
402 confounders. However, as these variables were not associated with LTL in the study cohort,
403 they were not retained in the final models. On the other hand, one should be aware that the
404 possibility of residual or unmeasured confounding cannot be excluded in general.

405 Collectively, the present studies provide compelling evidence that the telomeres of immune
406 cells in the peripheral blood are typically shorter in patients with MS. Significantly shorter LTL in
407 at least one MS subtype were consistently found in 4 of the studies (Table 2). In the studies by
408 Guan et al., the measured TL were on average 26% and 24% shorter in the PPMS subgroup
409 [51] and in the general MS group [52], respectively, as compared to the controls. In line with
410 this, Habib et al. found significantly shorter telomeres in each MS subgroup (RRMS: 19%,

411 SPMS: 29% and PPMS: 29% shorter) [55], and, finally, Hecker et al. observed 18% shorter LTL
412 in the RRMS patient cohort than in the control cohort [56]. A meta-analysis of these 4 studies
413 substantiated that LTL are significantly shorter in MS patients as compared to healthy controls
414 (overall SMD=-0.66, $p=0.003$). Egger's test revealed no funnel plot asymmetry ($p=0.771$),
415 indicating no major publication bias (Figure 3). However, there was considerable amount of
416 heterogeneity in the study findings (Q test $p<0.001$), and no discernible differences could be
417 detected between subtypes of MS. The other 3 studies could not be included in the
418 meta-analysis due to insufficient data available. In the first study by Hug et al., no apparent
419 differences in T cell TL were reported between cases and controls [50]. Redondo et al. did also
420 not find significant TL differences, but they recognized an accelerated telomere shortening in
421 MSCs from patients with progressive MS in vitro [53]. The remaining study by Krysko et al. did
422 not include a control group [54].

423 The more recent studies in the field also suggest that LTL as a biomarker reflects clinical
424 heterogeneity and that it may be useful to predict disease progression. Krysko et al. [54] found
425 that shorter telomeres are associated with longer disease duration, lower brain volume
426 measures in MRI and higher degrees of disability as measured by the EDSS [4]. A mediation
427 analysis indicated that LTL accounted for 15.1% of the effect of chronological age on disability
428 in their data [54]. The negative relationship between EDSS and TL was also seen by Habib
429 et al., although statistical significance was not achieved when the analysis was adjusted for age
430 [55]. In the longitudinal analyses by Krysko et al., baseline LTL was also weakly associated with
431 EDSS score worsening and cortical gray matter volume decline over time. Moreover, in the
432 subgroup of RRMS patients, a lower LTL was associated with a significantly higher relapse rate
433 in the follow-up [54]. In similar analyses by Hecker et al., RRMS patients with relatively low
434 baseline LTL had nominally higher EDSS scores over 10 years and a significantly higher
435 probability of transitioning to SPMS [56]. Therefore, despite differences in the findings by the
436 different research groups, MS patients with longer telomeres tend to have a more favorable
437 course of the disease.

438 **4. Discussion**

439 This is the first systematic review on studies that investigated TL in patients with MS. The
440 analysis of TL provides insights into the proliferation history of cells, as telomeres usually
441 shorten with every DNA replication. TL shortening is thus related to normal aging, but it is also
442 modulated by several environmental influences. In recent years, there has been increased
443 research interest on how the course of MS might be affected by biological aging and the
444 implicated immunological changes. As highlighted in our review, the studies in the current
445 literature show that MS patients typically have shorter telomeres in blood cells as compared to
446 controls. Moreover, it has been argued that the measurement of TL may serve as a potential
447 biomarker for assessing and predicting clinical phenotypes of MS.

448 The evidence of an association of relatively short TL and MS is convincing despite the fact that
449 only few studies (n=7) with small sample sizes (n≤138 patients for studies comparing against
450 controls) and heterogeneous study populations (e.g., with regard to age, sex and ancestry)
451 have been published so far. Interindividual variation in TL is well known to be affected by
452 demographic factors. On average, longer telomeres were found in adult women compared to
453 men [57], and TL are longer among people of African ancestry compared to people of European
454 ancestry [41]. The studies that were included in this review did not describe any sex-specific
455 differences in TL. However, further studies are needed to better understand to which extent
456 environmental and genetic factors, including sex-related differences, may influence TL as well
457 as risk and severity of MS. It is important to note that the patient cohorts in the reviewed studies
458 also differed in terms of clinical characteristics. For instance, different criteria for the diagnosis
459 of MS were applied, as these were constantly refined over the past years [45-47,58]. Moreover,
460 relapsing and progressive forms of MS were differently represented in the studies. All this may
461 explain some inconsistencies in the findings between the research groups. Therefore, future
462 studies on TL in MS may employ larger patient cohorts that are also more homogeneous in
463 terms of disease activity and progression as evaluated by clinical and MRI parameters. One
464 approach might be to incorporate the analysis of blood cell TL in the context of large-scale
465 observational studies or MS clinical trials.

466 In most of the reviewed studies, peripheral blood samples were used to measure TL in MS
467 patients. The collection of blood samples is rather safe and convenient, and it is also suitable
468 for repeated assessments in longitudinal studies. However, blood is a heterogeneous
469 composition of various cell types, which may provoke confounding effects in the analysis of TL.
470 Studies have shown that TL and the rate of telomere shortening differ between immune cell
471 types [42,59,60]. For instance, the decline in TL with age in lymphocytes is more pronounced
472 than in granulocytes [42]. As the only research group, Hug et al. used distinct circulating cell
473 types, namely CD4+ and CD8+ T cells, to compare TL between MS patients and healthy
474 controls [50]. Further cell type-specific studies on TL in MS are needed. So far, there is also no
475 TL study that used brain tissues or cerebrospinal fluid cells from MS patients. Hence, the role of
476 CNS cell telomeres in the pathobiology of MS remains to be explored. Telomeres of non-blood
477 cell populations have already been investigated in the context of other diseases. For example,
478 significant differences in TL were found in buccal cells and hippocampal brain tissue from
479 patients with AD in comparison to controls [61]. TL is generally positively correlated across
480 human tissue types, but different tissues have different cellular turnover and replacement, and
481 some tissue types have a certain level of telomerase expression in order to maintain TL in the
482 stem cell compartments [41]. For this reason, the analysis of TL in other tissues and body fluids
483 may give some new information on the association of TL and MS.

484 In 4 of the 7 included studies, the TRF technique was used, and qPCR assays were chosen in
485 the other 3 studies. Both approaches measure the average length of all telomeres in a cell
486 population. Other methods have been developed to provide deeper insights into the distribution
487 of TL and to quantify TL of specific chromosomes. Therefore, in future studies, methods like
488 Q-FISH [62], for determining the TL of each individual chromosome (p or q arm) in a particular
489 cell, or TeSLA [39], for detecting the shortest telomeres in a sample with high sensitivity, should
490 be taken into account. The shortest telomeres, rather than the average TL, were demonstrated
491 to be critical for genome stability and cell viability as they trigger DNA damage responses
492 leading to replicative senescence [63]. Therefore, more advanced methods may help to
493 delineate cause-and-effect relationships of dysfunctional telomeres in onset and progression of

494 MS. Moreover, they allow measuring subtle changes in the abundance of the shortest
495 telomeres over time, which may have implications for disease monitoring.

496 Besides TL, there are various other markers of biological aging. In 2013, Horvath developed a
497 predictor of age that allows to estimate the DNA methylation (DNAm) age of tissues and
498 cell types [64]. This “epigenetic clock” focuses on cytosine-5 methylations in DNA regions
499 where a cytosine nucleotide is followed by a guanine nucleotide (CpG). DNAm age utilizes
500 information from 353 CpG sites, of which 193 get hypermethylated and 160 get hypomethylated
501 with increasing age [64]. Using this measure, it has been found that men have higher
502 epigenetic aging rates than women in blood, saliva and brain tissue [65]. In 2018, Levine et al.
503 introduced DNAm PhenoAge, an estimate of phenotypic age based on the methylation status at
504 513 CpGs that strongly correlates with age but also captures variations in morbidity and
505 mortality outcomes [66]. Theodoropoulou et al. recently compared four age acceleration
506 measures, including the epigenetic clock by Horvath and DNAm PhenoAge, using blood
507 samples from MS patients [67]. They showed that the different measures reflect separate
508 pathophysiological aspects of the disease and that MS patients have significantly higher age
509 acceleration than healthy controls when evaluating DNAm PhenoAge in whole blood. However,
510 a single best measure of biological aging does not exist. TL measurements and the diverse
511 proposed epigenetic clocks reflect different molecular hallmarks of aging [68,69], and each may
512 have its own strengths in the analysis of disease-specific mechanisms.

513 It currently remains unclear whether shortened telomeres in MS are a cause or a consequence
514 of the pathophysiological processes. An accelerated loss of telomeres with age is known to be
515 attributable to systemic oxidative stress and chronic inflammation, which is associated with
516 increased cellular turnover [28,57]. Interestingly, significantly enhanced lipid peroxidation could
517 be detected in all MS subtypes in the studies by Guan et al. [51,52]. Elevated levels of oxidative
518 stress markers in patients with MS are presumably connected to the inflammatory disease
519 processes. Within the CNS, this in turn may promote demyelination and axonal degeneration
520 and render neuronal repair mechanisms less effective. On the other hand, persistent viral
521 infections were shown to affect TL dynamics and to trigger senescence in immune cells [30].
522 The accumulation of senescent cells that lack proliferative capacity has adverse consequences

523 as these cells occupy cellular niches and release proinflammatory cytokines [70]. Apart from
524 this, it should be noted that chromatin organization and gene regulation are also modulated by
525 telomere shortening even long before the initiation of DNA damage signals [71]. However,
526 additional research efforts are required to better understand the precise interplay between
527 immune responses and aging mechanisms in MS.

528 Targeting aging-related mechanisms could be an integral part of future patient care.

529 Micronutrients, such as vitamins and minerals, can modulate oxidative stress and chronic
530 inflammation and thereby affect TL [72]. For instance, higher serum vitamin D concentrations
531 were shown to be associated with longer LTL [73]. Several interventional studies have
532 investigated the effects of vitamin D supplementation in people with MS, but firm conclusions
533 on the clinical benefits cannot yet be drawn [74]. The use of vitamin E and other antioxidants in
534 MS patients is still unclear due to a lack of sufficiently powered studies [75]. Besides, senolytic
535 drugs have been discussed to improve chronic diseases and functional deficits by enhancing
536 immune-mediated clearance of senescent cells [76,77]. Studies with mice showed that removal
537 of senescent cells can prevent or delay tissue dysfunction [78]. Therefore, several senolytics
538 are now tested in clinical trials for treating diverse conditions such as frailty and AD [77], and
539 the administration of senolytics has also been suggested as a potential strategy for delaying
540 progression of MS [79]. The therapeutic modulation of telomerase activity is another approach
541 that is currently being pursued mainly in cancer trials [80]. In the reviewed studies, most MS
542 patients received a basic disease-modifying treatment (DMT), which was not found to be
543 related to TL [54,56]. However, several highly efficacious immune cell depletion therapies have
544 been approved for MS in recent years [81]. Following depletion, the repopulation kinetics vary
545 between different cell types (e.g., B cells repopulate much faster than T cells). These therapies
546 thus have a sustained impact on the immune system. The induced long-term immunological
547 changes probably correlate with changes in TL of circulating lymphocytes. However, the
548 possible relevance of TL dynamics in response to specific MS therapies has not yet been
549 investigated.

550 To conclude, there is an increased number of studies on the role of telomere attrition in
551 neurological disorders. Here, we identified and reviewed 7 studies that investigated TL in the

552 context of MS. Despite differences in study design and methodology, the findings of the studies
553 overall point to shorter telomeres in blood cells of MS patients in comparison to controls, which
554 was supported by our meta-analysis. Shorter TL were also associated with greater disability
555 and brain atrophy as well as disease progression independent of chronological age. This
556 suggests that biological aging is related to inflammation and neurodegeneration in MS and that
557 the assessment of TL as a biomarker of immunosenescence may provide useful information
558 regarding the individual course of disease. However, further research is needed to better
559 understand the complex relationship between aging and the pathobiology of MS. Subsequent
560 studies may explore the distribution of the shortest telomeres in specific immune cell subtypes
561 and brain cells. This may yield deeper insights into the pathophysiology of MS and allow to
562 develop novel therapeutic strategies targeting aging-related mechanisms.

563 **Abbreviations**

564	AD	Alzheimer's disease
565	BMI	body mass index
566	CIS	clinically isolated syndrome
567	CNS	central nervous system
568	CpG	cytosine and guanine separated by a single phosphate group
569	DMT	disease-modifying treatment
570	DNA	deoxyribonucleic acid
571	DNAm	DNA methylation
572	EDSS	Expanded Disability Status Scale
573	HLA	human leukocyte antigen
574	kb	kilobase
575	LCL	lymphoblastoid cell line
576	LDL	low-density lipoprotein
577	LTL	leukocyte telomere length
578	MHC	major histocompatibility complex
579	mmqPCR	monochrome multiplex qPCR
580	MRI	magnetic resonance imaging
581	MS	multiple sclerosis
582	MSC	mesenchymal stromal cell
583	n	number
584	n.c.	no control group
585	n.i.	no information
586	P	passage number of in vitro expansion
587	PCR	polymerase chain reaction
588	PPMS	primary progressive multiple sclerosis
589	PRISMA	Preferred Reporting Items for Systematic Reviews and Meta-Analyses
590	Q-FISH	quantitative fluorescence in situ hybridization
591	qPCR	quantitative PCR

592	RRMS	relapsing-remitting multiple sclerosis
593	S	single-copy gene signal
594	SMD	standardized mean difference
595	SPMS	secondary progressive multiple sclerosis
596	T	telomere signal
597	TERC	telomerase RNA component
598	TERT	telomerase reverse transcriptase
599	TeSLA	telomere shortest length assay
600	TL	telomere length
601	TRF	terminal restriction fragment
602	U-TELA	universal single telomere length analysis
603	vs.	versus

604 **Authors' contributions**

605 JB performed the literature search, prepared all tables and drafted the manuscript. MH critically
606 revised the manuscript for important intellectual content and conducted the meta-analysis. BF
607 contributed to the interpretation of published material and the writing of the manuscript. UKZ
608 conceptualized and supervised the research. All authors commented on previous versions of
609 the manuscript. All authors read and approved the final manuscript.

610 **Acknowledgments**

611 None to declare.

612 **Funding**

613 No funding was received for conducting the submitted work.

614 **Conflicts of interests**

615 The authors have no financial or non-financial interests to declare that are relevant to the
616 content of this article.

617 References

- [1] Goodin DS. The epidemiology of multiple sclerosis: insights to a causal cascade. *Handb Clin Neurol*. 2016;138:173–206. doi:10.1016/B978-0-12-802973-2.00011-2
- [2] Walton C, King R, Rechtman L, et al. Rising prevalence of multiple sclerosis worldwide: Insights from the Atlas of MS, third edition. *Mult Scler*. 2020;1352458520970841. doi:10.1177/1352458520970841
- [3] Filippi M, Bar-Or A, Piehl F, et al. Multiple sclerosis. *Nat Rev Dis Primers*. 2018;4(1):43. doi:10.1038/s41572-018-0041-4
- [4] Kurtzke JF. Rating neurologic impairment in multiple sclerosis: an expanded disability status scale (EDSS). *Neurology*. 1983;33(11):1444–1452. doi:10.1212/wnl.33.11.1444
- [5] Confavreux C, Vukusic S. The clinical course of multiple sclerosis. *Handb Clin Neurol*. 2014;122:343–369. doi:10.1016/B978-0-444-52001-2.00014-5
- [6] Lublin FD, Reingold SC, Cohen JA, et al. Defining the clinical course of multiple sclerosis: the 2013 revisions. *Neurology*. 2014;83(3):278–286. doi:10.1212/WNL.0000000000000560
- [7] Koch-Henriksen N, Sørensen PS. The changing demographic pattern of multiple sclerosis epidemiology. *Lancet Neurol*. 2010;9(5):520–532. doi:10.1016/S1474-4422(10)70064-8
- [8] Orton SM, Herrera BM, Yee IM, et al. Sex ratio of multiple sclerosis in Canada: a longitudinal study. *Lancet Neurol*. 2006;5(11):932–936. doi:10.1016/S1474-4422(06)70581-6
- [9] Golden LC, Voskuhl R. The importance of studying sex differences in disease: The example of multiple sclerosis. *J Neurosci Res*. 2017;95(1-2):633–643. doi:10.1002/jnr.23955
- [10] Belbasis L, Bellou V, Evangelou E, Ioannidis JP, Tzoulaki I. Environmental risk factors and multiple sclerosis: an umbrella review of systematic reviews and meta-analyses. *Lancet Neurol*. 2015;14(3):263–273. doi:10.1016/S1474-4422(14)70267-4
- [11] Pakpoor J, Disanto G, Gerber JE, et al. The risk of developing multiple sclerosis in individuals seronegative for Epstein-Barr virus: a meta-analysis. *Mult Scler*. 2013;19(2):162–166. doi:10.1177/1352458512449682
- [12] Engdahl E, Gustafsson R, Huang J, et al. Increased Serological Response Against Human Herpesvirus 6A Is Associated With Risk for Multiple Sclerosis. *Front Immunol*. 2019;10:2715. doi:10.3389/fimmu.2019.02715
- [13] Alfredsson L, Olsson T. Lifestyle and Environmental Factors in Multiple Sclerosis. *Cold Spring Harb Perspect Med*. 2019;9(4):a028944. doi:10.1101/cshperspect.a028944
- [14] Olsson T, Barcellos LF, Alfredsson L. Interactions between genetic, lifestyle and environmental risk factors for multiple sclerosis. *Nat Rev Neurol*. 2017;13(1):25–36. doi:10.1038/nrneurol.2016.187

- [15] Lincoln MR, Montpetit A, Cader MZ, et al. A predominant role for the HLA class II region in the association of the MHC region with multiple sclerosis. *Nat Genet.* 2005;37(10):1108–1112. doi:10.1038/ng1647
- [16] Dobson R, Giovannoni G. Multiple sclerosis - a review. *Eur J Neurol.* 2019;26(1):27–40. doi:10.1111/ene.13819
- [17] Moutsianas L, Jostins L, Beecham AH, et al. Class II HLA interactions modulate genetic risk for multiple sclerosis. *Nat Genet.* 2015;47(10):1107–1113. doi:10.1038/ng.3395
- [18] International Multiple Sclerosis Genetics Consortium. Multiple sclerosis genomic map implicates peripheral immune cells and microglia in susceptibility. *Science.* 2019;365(6460):eaav7188. doi:10.1126/science.aav7188
- [19] Baranzini SE, Oksenberg JR. The Genetics of Multiple Sclerosis: From 0 to 200 in 50 Years. *Trends Genet.* 2017;33(12):960–970. doi:10.1016/j.tig.2017.09.004
- [20] Wang S, Madu CO, Lu Y. Telomere and Its Role in Diseases. *Oncomedicine.* 2019;4:1–9. doi:10.7150/oncm.28210
- [21] Anitha A, Thanseem I, Vasu MM, Viswambharan V, Poovathinal SA. Telomeres in neurological disorders. *Adv Clin Chem.* 2019;90:81–132. doi:10.1016/bs.acc.2019.01.003
- [22] Saretzki G. Telomeres, Telomerase and Ageing. *Subcell Biochem.* 2018;90:221–308. doi:10.1007/978-981-13-2835-0_9
- [23] Moyzis RK, Buckingham JM, Cram LS, et al. A highly conserved repetitive DNA sequence, (TTAGGG)_n, present at the telomeres of human chromosomes. *Proc Natl Acad Sci U S A.* 1988;85(18):6622–6626. doi:10.1073/pnas.85.18.6622
- [24] de Lange T. Shelterin: the protein complex that shapes and safeguards human telomeres. *Genes Dev.* 2005;19(18):2100–2110. doi:10.1101/gad.1346005
- [25] Corbett N, Alda M. On telomeres long and short. *J Psychiatry Neurosci.* 2015;40(1):3–4. doi:10.1503/jpn.140347
- [26] Marioni RE, Harris SE, Shah S, et al. The epigenetic clock and telomere length are independently associated with chronological age and mortality. *Int J Epidemiol.* 2018;45(2):424–432. doi:10.1093/ije/dyw041
- [27] Hayflick L, Moorhead PS. The serial cultivation of human diploid cell strains. *Exp Cell Res.* 1961;25:585–621. doi:10.1016/0014-4827(61)90192-6
- [28] von Zglinicki T. Oxidative stress shortens telomeres. *Trends Biochem Sci.* 2002;27(7):339–344. doi:10.1016/s0968-0004(02)02110-2
- [29] Gorenjak V, Akbar S, Stathopoulou MG, Visvikis-Siest S. The future of telomere length in personalized medicine. *Front Biosci (Landmark Ed).* 2018;23:1628–1654. doi:10.2741/4664
- [30] Bellon M, Nicot C. Telomere Dynamics in Immune Senescence and Exhaustion Triggered by Chronic Viral Infection. *Viruses.* 2017;9(10):289. doi:10.3390/v9100289
- [31] Dowd JB, Bosch JA, Steptoe A, et al. Persistent Herpesvirus Infections and Telomere

Attrition Over 3 Years in the Whitehall II Cohort. *J Infect Dis*. 2017;216(5):565–572. doi:10.1093/infdis/jix255

- [32] Du M, Prescott J, Kraft P, et al. Physical activity, sedentary behavior, and leukocyte telomere length in women. *Am J Epidemiol*. 2012;175(5):414-422. doi:10.1093/aje/kwr330
- [33] Wright WE, Piatyszek MA, Rainey WE, Byrd W, Shay JW. Telomerase activity in human germline and embryonic tissues and cells. *Dev Genet*. 1996;18(2):173–179. doi:10.1002/(SICI)1520-6408(1996)18:2<173::AID-DVG10>3.0.CO;2-3
- [34] Kim NW, Piatyszek MA, Prowse KR, et al. Specific association of human telomerase activity with immortal cells and cancer. *Science*. 1994;266(5193):2011–2015. doi:10.1126/science.7605428
- [35] Shay JW, Bacchetti S. A survey of telomerase activity in human cancer. *Eur J Cancer*. 1997;33(5):787–791. doi:10.1016/S0959-8049(97)00062-2
- [36] Mensà E, Latini S, Ramini D, Storci G, Bonafè M, Olivieri F. The telomere world and aging: Analytical challenges and future perspectives. *Ageing Res Rev*. 2019;50:27–42. doi:10.1016/j.arr.2019.01.004
- [37] Cawthon RM. Telomere measurement by quantitative PCR. *Nucleic Acids Res*. 2002;30(10):e47. doi:10.1093/nar/30.10.e47
- [38] Cawthon RM. Telomere length measurement by a novel monochrome multiplex quantitative PCR method. *Nucleic Acids Res*. 2009;37(3):e21. doi:10.1093/nar/gkn1027
- [39] Lai TP, Zhang N, Noh J, et al. A method for measuring the distribution of the shortest telomeres in cells and tissues. *Nat Commun*. 2017;8(1):1356. doi:10.1038/s41467-017-01291-z
- [40] Lai TP, Wright WE, Shay JW. Comparison of telomere length measurement methods. *Philos Trans R Soc Lond B Biol Sci*. 2018;373(1741):20160451. doi:10.1098/rstb.2016.0451
- [41] Demanelis K, Jasmine F, Chen LS, et al. Determinants of telomere length across human tissues. *Science*. 2020;369(6509):eaaz6876. doi:10.1126/science.aaz6876
- [42] Aubert G, Baerlocher GM, Vulto I, Poon SS, Lansdorp PM. Collapse of telomere homeostasis in hematopoietic cells caused by heterozygous mutations in telomerase genes. *PLoS Genet*. 2012;8(5):e1002696. doi:10.1371/journal.pgen.1002696
- [43] Barthel FP, Wei W, Tang M, et al. Systematic analysis of telomere length and somatic alterations in 31 cancer types. *Nat Genet*. 2017;49(3):349–357. doi:10.1038/ng.3781
- [44] Liberati A, Altman DG, Tetzlaff J, et al. The PRISMA statement for reporting systematic reviews and meta-analyses of studies that evaluate health care interventions: explanation and elaboration. *PLoS Med*. 2009;6(7):e1000100. doi:10.1371/journal.pmed.1000100
- [45] Poser CM, Paty DW, Scheinberg L, et al. New diagnostic criteria for multiple sclerosis: guidelines for research protocols. *Ann Neurol*. 1983;13(3):227–231. doi:10.1002/ana.410130302
- [46] McDonald WI, Compston A, Edan G, et al. Recommended diagnostic criteria for multiple

sclerosis: guidelines from the International Panel on the diagnosis of multiple sclerosis. *Ann Neurol.* 2001;50(1):121–127. doi:10.1002/ana.1032

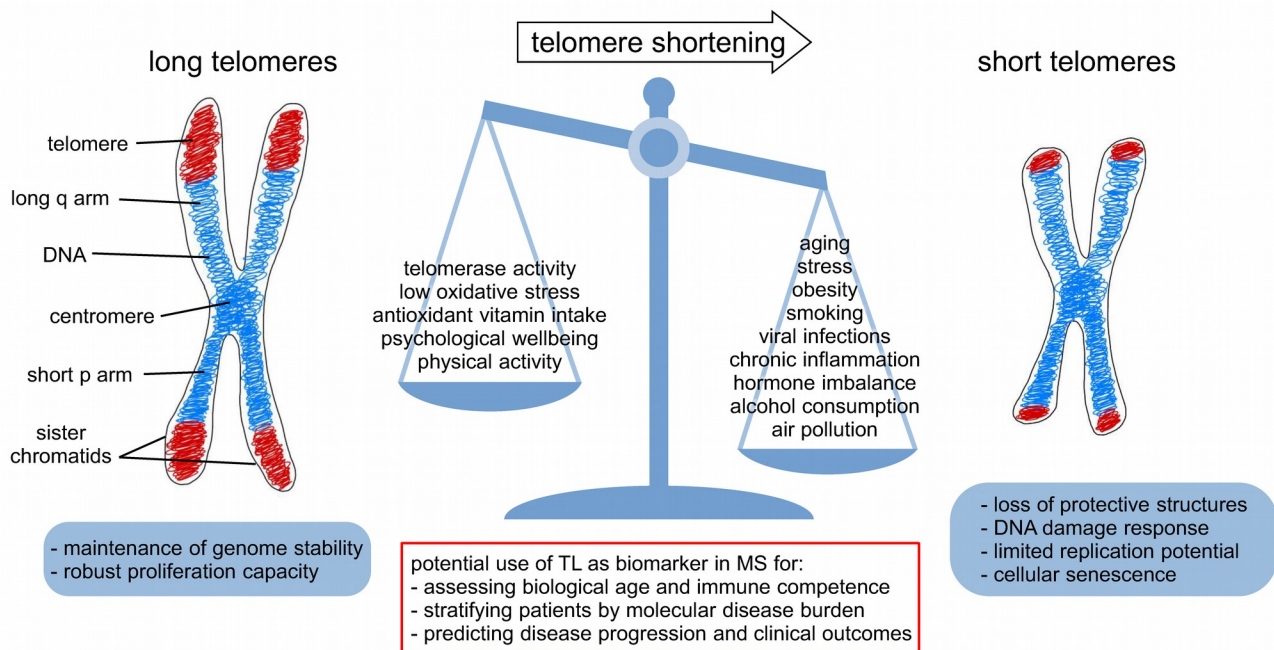
- [47] Polman CH, Reingold SC, Edan G, et al. Diagnostic criteria for multiple sclerosis: 2005 revisions to the "McDonald Criteria". *Ann Neurol.* 2005;58(6):840–846. doi:10.1002/ana.20703
- [48] Viechtbauer W. Conducting meta-analyses in R with the metafor package. *J Stat Softw.* 2010;36(3):1–48. doi:10.18637/jss.v036.i03
- [49] Egger M, Davey Smith G, Schneider M, Minder C. Bias in meta-analysis detected by a simple, graphical test. *BMJ.* 1997;315(7109):629–634. doi:10.1136/bmj.315.7109.629
- [50] Hug A, Korporal M, Schröder I, et al. Thymic export function and T cell homeostasis in patients with relapsing remitting multiple sclerosis. *J Immunol.* 2003;171(1):432–437. doi:10.4049/jimmunol.171.1.432
- [51] Guan JZ, Guan WP, Maeda T, Guoqing X, GuangZhi W, Makino N. Patients with multiple sclerosis show increased oxidative stress markers and somatic telomere length shortening. *Mol Cell Biochem.* 2015;400(1-2):183–187. doi:10.1007/s11010-014-2274-1
- [52] Guan JZ, Guan WP, Maeda T. Vitamin E administration erases an enhanced oxidation in multiple sclerosis. *Can J Physiol Pharmacol.* 2018;96(11):1181–1183. doi:10.1139/cjpp-2018-0246
- [53] Redondo J, Sarkar P, Kemp K, et al. Reduced cellularity of bone marrow in multiple sclerosis with decreased MSC expansion potential and premature ageing in vitro. *Mult Scler.* 2018;24(7):919–931. doi:10.1177/1352458517711276
- [54] Krysko KM, Henry RG, Cree BAC, et al. Telomere Length Is Associated with Disability Progression in Multiple Sclerosis. *Ann Neurol.* 2019;86(5):671–682. doi:10.1002/ana.25592
- [55] Habib R, Ocklenburg S, Hoffjan S, Haghikia A, Epplen JT, Arning L. Association between shorter leukocyte telomeres and multiple sclerosis. *J Neuroimmunol.* 2020;341:577187. doi:10.1016/j.jneuroim.2020.577187
- [56] Hecker M, Fitzner B, Jaeger K, Buehring J, Schwartz M, Hartmann A, Walter M, Zettl UK. Leukocyte telomere length in patients with multiple sclerosis and its association with clinical phenotypes. *medRxiv.* 2020.11.17.20232975. doi:10.1101/2020.11.17.20232975
- [57] Turner KJ, Vasu V, Griffin DK. Telomere Biology and Human Phenotype. *Cells.* 2019;8(1):73. doi:10.3390/cells8010073
- [58] Thompson AJ, Banwell BL, Barkhof F, et al. Diagnosis of multiple sclerosis: 2017 revisions of the McDonald criteria. *Lancet Neurol.* 2018;17(2):162–173. doi:10.1016/S1474-4422(17)30470-2
- [59] Lin J, Cheon J, Brown R, et al. Systematic and Cell Type-Specific Telomere Length Changes in Subsets of Lymphocytes. *J Immunol Res.* 2016;2016:5371050. doi:10.1155/2016/5371050
- [60] Eitan E, Hutchison ER, Mattson MP. Telomere shortening in neurological disorders: an abundance of unanswered questions. *Trends Neurosci.* 2014;37(5):256–263.

doi:10.1016/j.tins.2014.02.010

- [61] Thomas P, O' Callaghan NJ, Fenech M. Telomere length in white blood cells, buccal cells and brain tissue and its variation with ageing and Alzheimer's disease. *Mech Ageing Dev.* 2008;129(4):183–190. doi:10.1016/j.mad.2007.12.004
- [62] Slijepcevic P. Telomere length measurement by Q-FISH. *Methods Cell Sci.* 2001;23(1-3):17–22.
- [63] Hemann MT, Strong MA, Hao LY, Greider CW. The shortest telomere, not average telomere length, is critical for cell viability and chromosome stability. *Cell.* 2001;107(1):67-77. doi:10.1016/s0092-8674(01)00504-9
- [64] Horvath S. DNA methylation age of human tissues and cell types. *Genome Biol.* 2013;14(10):R115. doi:10.1186/gb-2013-14-10-r115
- [65] Horvath S, Gurven M, Levine ME, et al. An epigenetic clock analysis of race/ethnicity, sex, and coronary heart disease. *Genome Biol.* 2016;17(1):171. doi:10.1186/s13059-016-1030-0
- [66] Levine ME, Lu AT, Quach A, et al. An epigenetic biomarker of aging for lifespan and healthspan. *Aging (Albany NY).* 2018;10(4):573–591. doi:10.18632/aging.101414
- [67] Theodoropoulou E, Alfredsson L, Piehl F, Marabita F, Jagodic M. Different epigenetic clocks reflect distinct pathophysiological features of multiple sclerosis. *Epigenomics.* 2019;11(12):1429–1439. doi:10.2217/epi-2019-0102
- [68] Bergsma T, Rogaeva E. DNA Methylation Clocks and Their Predictive Capacity for Aging Phenotypes and Healthspan. *Neurosci Insights.* 2020;15:2633105520942221. doi:10.1177/2633105520942221
- [69] Belsky DW, Moffitt TE, Cohen AA, et al. Eleven Telomere, Epigenetic Clock, and Biomarker-Composite Quantifications of Biological Aging: Do They Measure the Same Thing?. *Am J Epidemiol.* 2018;187(6):1220–1230. doi:10.1093/aje/kwx346
- [70] He S, Sharpless NE. Senescence in Health and Disease. *Cell.* 2017;169(6):1000–1011. doi:10.1016/j.cell.2017.05.015
- [71] Kim W, Shay JW. Long-range telomere regulation of gene expression: Telomere looping and telomere position effect over long distances (TPE-OLD). *Differentiation.* 2018;99:1–9. doi:10.1016/j.diff.2017.11.005
- [72] Xu Q, Parks CG, DeRoo LA, Cawthon RM, Sandler DP, Chen H. Multivitamin use and telomere length in women. *Am J Clin Nutr.* 2009;89(6):1857–1863. doi:10.3945/ajcn.2008.26986
- [73] Richards JB, Valdes AM, Gardner JP, et al. Higher serum vitamin D concentrations are associated with longer leukocyte telomere length in women. *Am J Clin Nutr.* 2007;86(5):1420–1425. doi:10.1093/ajcn/86.5.1420
- [74] Yeh WZ, Gresle M, Jokubaitis V, Stankovich J, van der Walt A, Butzkueven H. Immunoregulatory effects and therapeutic potential of vitamin D in multiple sclerosis. *Br J Pharmacol.* 2020;177(18):4113–4133. doi:10.1111/bph.15201

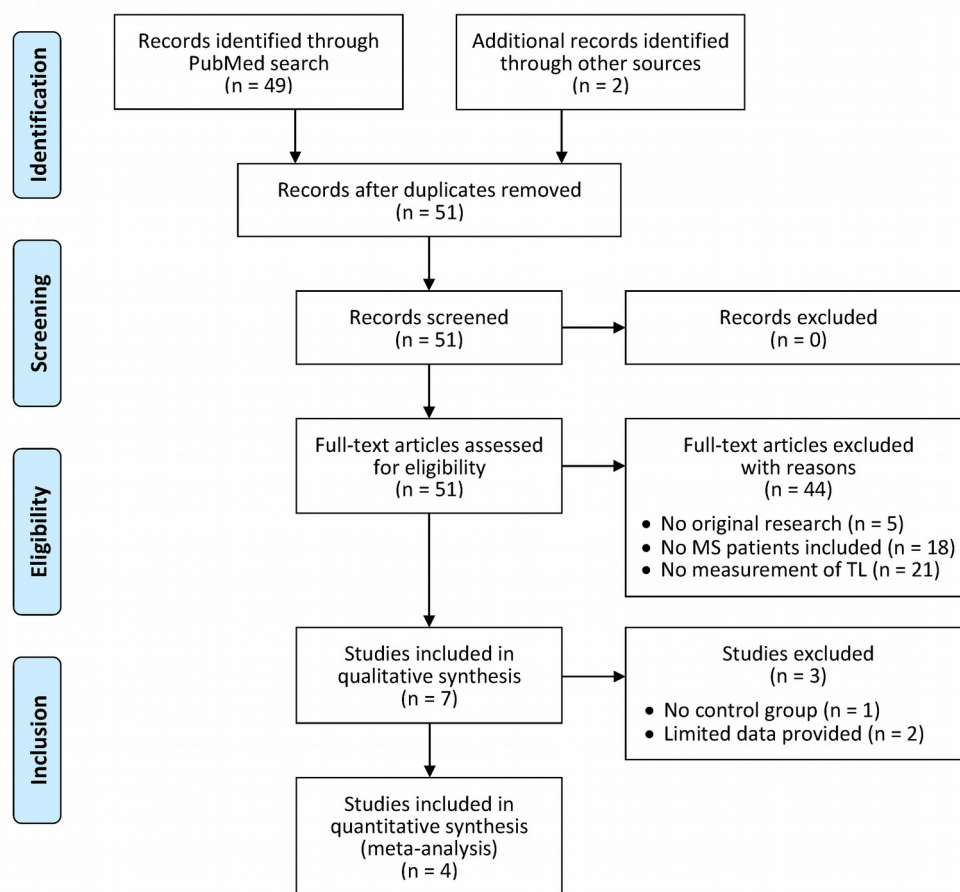
- [75] Waslo C, Bourdette D, Gray N, Wright K, Spain R. Lipoic Acid and Other Antioxidants as Therapies for Multiple Sclerosis. *Curr Treat Options Neurol*. 2019;21(6):26. doi:10.1007/s11940-019-0566-1
- [76] Prata LGPL, Ovsyannikova IG, Tchkonja T, Kirkland JL. Senescent cell clearance by the immune system: Emerging therapeutic opportunities. *Semin Immunol*. 2018;40:101275. doi:10.1016/j.smim.2019.04.003
- [77] Robbins PD, Jurk D, Khosla S, et al. Senolytic Drugs: Reducing Senescent Cell Viability to Extend Health Span. *Annu Rev Pharmacol Toxicol*. 2021;61:31.1–31.25. doi:10.1146/annurev-pharmtox-050120-105018
- [78] Baker DJ, Wijshake T, Tchkonja T, et al. Clearance of p16Ink4a-positive senescent cells delays ageing-associated disorders. *Nature*. 2011;479(7372):232–236. doi:10.1038/nature10600
- [79] Oost W, Talma N, Meilof JF, Laman JD. Targeting senescence to delay progression of multiple sclerosis. *J Mol Med (Berl)*. 2018;96(11):1153–1166. doi:10.1007/s00109-018-1686-x
- [80] Jäger K, Walter M. Therapeutic Targeting of Telomerase. *Genes (Basel)*. 2016;7(7):39. doi:10.3390/genes7070039
- [81] Lünemann JD, Ruck T, Muraro PA, Bar-Or A, Wiendl H. Immune reconstitution therapies: concepts for durable remission in multiple sclerosis. *Nat Rev Neurol*. 2020;16(1):56–62. doi:10.1038/s41582-019-0268-z

618 Figures



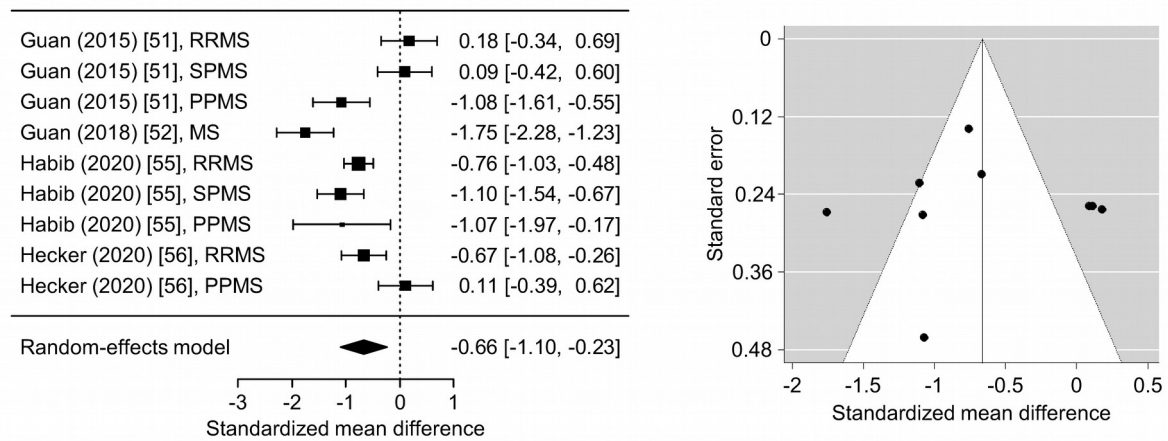
620 **Figure 1: Factors contributing to accelerated telomere shortening.**

621 A metaphase chromosome is depicted on the left. The telomeres are highlighted in red and not drawn to
 622 scale in the diagram. They are located at the ends of the chromosome arms and consist of TTAGGG tandem
 623 repeat sequences (5 – 15 kb in humans). The centromere holds the two sister chromatids together. In normal
 624 cells, telomeres shorten with every cell division. Apart from individual genetic determinants that affect
 625 telomere length (TL), various environmental and lifestyle factors are known to influence telomere attrition.
 626 Disruption of telomere maintenance is associated with end-to-end chromosome fusion. Critically short
 627 telomeres trigger DNA damage responses such as cell cycle arrest. Telomere biology thus plays a crucial
 628 role in health and disease. In multiple sclerosis (MS), the analysis of TL may serve as a biomarker of the
 629 patients' immunosenescence status to assess and predict clinical disease phenotypes.



631 **Figure 2: PRISMA flow diagram of the study selection process.**

632 Following the Preferred Reporting Items for Systematic Reviews and Meta-Analyses (PRISMA statement)
633 [44], we considered the four steps identification, screening, eligibility and inclusion to identify studies for our
634 systematic review. The boxes that are connected through arrows show the steps of the selection process
635 and the number of articles that were included or excluded. A total of 51 articles were found in the literature
636 databases and evaluated for eligibility. The study selection finally revealed 7 studies on telomere lengths (TL)
637 in patients with multiple sclerosis (MS). A subset of 4 studies was included in the meta-analysis.



639 **Figure 3: Meta-analysis of the relationship between telomere length and multiple sclerosis.**

640 The meta-analysis was based on the results of 4 studies. The forest plot on the left shows the standardized
 641 mean differences with 95% confidence intervals for the comparisons of leukocyte telomere lengths (TL) in
 642 patients with multiple sclerosis (MS) versus healthy controls in the individual studies and based on a random-
 643 effects model. The summary estimate of -0.66 indicated significantly shorter TL in MS ($p=0.003$), and the
 644 Cochran's Q test indicated heterogeneity across the studies ($p<0.001$). The funnel plot on the right showed
 645 no apparent asymmetry, and Egger's regression test detected no evidence of publication bias ($p=0.771$).

646 PPMS = primary progressive MS; RRMS = relapsing-remitting MS; SPMS = secondary progressive MS

647 Tables

648 **Table 1: General information about the 7 studies that were included in this review.**

First author (year)	Study design	Population	Diagnostic criteria	Sample size (patients : controls)	Disease course	Mean age in years (patients : controls)	% Female sex (patients : controls)	Matching
Hug (2003) [50]	cases vs. controls, observational	Germany	Poser 1983	20 : 20	RRMS: 20 SPMS: 0 PPMS: 0	n.i. : n.i.	n.i. : n.i.	age
Guan (2015) [51]	cases vs. controls, observational	Asia	McDonald 2001	59 : 60	RRMS: 19 SPMS: 20 PPMS: 20	33.3 : 34.3	45.8 : 43.3	age, sex, lifestyle, diet
Guan (2018) [52]	cases vs. controls, interventional	Asia	McDonald 2001	34 : 44	RRMS: n.i. SPMS: n.i. PPMS: n.i.	32.8 : 33.6	47.1 : 47.7	age, sex
Redondo (2018) [53]	cases vs. controls ^a , observational	United Kingdom	n.i.	10 : 6	RRMS: 0 SPMS: 5 PPMS: 5	54.1 : 55.7	30.0 : 33.3	age, sex
Krysko (2019) [54]	case-only, observational	USA	McDonald 2001	516 : 0	RRMS: 367 SPMS: 47 PPMS: 17 Other ^b : 85	42.6 : n.c.	68.6 : n.c.	age, sex, disease duration, EDSS ^d
Habib (2020) [55]	cases vs. controls, observational	Germany	McDonald 2001	138 : 120	RRMS: 102 SPMS: 27 PPMS: 5 Other ^c : 4	39.4 : 44.6	62.3 : 45.8	-
Hecker (2020) [56]	cases vs. controls, observational	Germany	McDonald 2001/2005	60 : 60	RRMS: 40 SPMS: 0 PPMS: 20	48.0 : 48.1	50.0 : 50.0	age, sex

650 In total, we have identified 7 studies in which telomere lengths (TL) were measured in patients with multiple
651 sclerosis (MS). With one exception, all studies also included a control cohort. In the only interventional study,
652 the impact of vitamin E supplementation on TL was explored. The patients were diagnosed according to the
653 Poser criteria [45] or the (revised) McDonald criteria [46,47]. Furthermore, the study populations differed with
654 regard to sample size, MS subtype composition, age distribution and proportion of women. The study cohorts
655 were often matched for demographic characteristics to account for potential confounding in the TL analysis.

656 ^a = controls were not healthy (controls underwent total hip replacement for indication of osteoarthritis)

657 ^b = comprises 80 patients with clinically isolated syndrome, 4 patients with progressive relapsing MS and
658 1 patient with an unclear diagnosis

659 ^c = subtype of MS unclear

660 ^d = matching was assured for a subset of SPMS converters and non-converters (n=46) with TL measured
661 longitudinally (no control cohort in this study)

662 EDSS = Expanded Disability Status Scale; n.c. = no control group; n.i. = no information; PPMS = primary
663 progressive MS; RRMS = relapsing-remitting MS; SPMS = secondary progressive MS

664 **Table 2: Methodological details and findings of the 7 studies on TL in MS patients.**

First author (year)	Type of specimen	Sampling strategy	Method for TL measurement	Variables considered as confounders	TL in MS patients ^a	TL in controls ^a	Association of TL with MS diagnosis	Other associations with TL
Hug (2003) [50]	peripheral blood CD4+ and CD8+ T cells	cross-sectional	TRF analysis	age	CD4+: 10.1 kb CD8+: 9.2 kb	CD4+: 8.8 kb CD8+: 9.4 kb	-	age ↓
Guan (2015) [51]	peripheral blood leukocytes	cross-sectional	TRF analysis	-	RRMS: 9.5 ± 0.8 kb SPMS: 9.3 ± 0.9 kb PPMS: 6.7 ± 0.7 kb	9.1 ± 2.5 kb	PPMS ↓	age ↓ ^b
Guan (2018) [52]	peripheral blood leukocytes	cross-sectional and longitudinal, 3-month follow-up	TRF analysis	-	6.9 ± 1.0 kb	9.1 ± 1.4 kb	MS ↓	-
Redondo (2018) [53]	bone marrow cells (MSCs)	cross-sectional	TRF analysis	age, passage number ^c	not specified	not specified	-	age ↓, passage number ↓ ^{c,d}
Krysko (2019) [54]	peripheral blood leukocytes	cross-sectional and longitudinal, 10-year follow-up	singleplex qPCR	age, sex, disease duration	0.97 ± 0.18 (5.6 kb)	n.c.	n.c.	age ↓, EDSS ↓, disease duration ↓, low brain volume ↓, relapse rate ↓ ^e
Habib (2020) [55]	peripheral blood leukocytes	cross-sectional	multiplex qPCR	age, sex	RRMS: 0.76 ± 0.22 SPMS: 0.67 ± 0.21 PPMS: 0.67 ± 0.27	0.94 ± 0.25	RRMS ↓, SPMS ↓, PPMS ↓	age ↓, EDSS ↓, passage number ↓ ^c
Hecker (2020) [56]	peripheral blood leukocytes	cross-sectional and longitudinal, >10-year follow-up	multiplex qPCR	age, sex	RRMS: 0.92 ± 0.19 PPMS: 1.16 ± 0.35	1.12 ± 0.35	RRMS ↓	age ↓, transition to SPMS ↓ ^e

666 In all but one study, average TL were examined in blood cell populations. In 4 studies, the sampling was
667 carried out at a single time point, whereas in the other 3 studies, samples were collected in a longitudinal
668 manner at least for a subgroup of patients. TRF analysis by Southern blotting or qPCR assays [37,38] were
669 employed for TL quantification. The mean TL (± standard deviation, if available) is given for each study
670 group. The statistical analyses usually included adjustments for confounding factors that were suspected to
671 contribute to variation in the data. In 4 out of 6 studies that compared cases and controls, significantly shorter
672 telomeres were observed in at least one MS subgroup. Other associations that were reported in the studies
673 are presented in the rightmost column.

674 ↓ = variable or group was found to be associated with significantly shorter telomeres

675 ^a = depending on the measurement method used, the TL group averages from the cross-sectional analyses
676 are given in kb (TRF) or in relative values (qPCR)

677 ^b = significance was reached only for controls and male SPMS patients

678 ^c = referring to in vitro experiments with patient-derived cells

679 ^d = decrease of TL with increasing passage number reached statistical significance only for MSCs from
680 MS patients but not for control MSCs

681 ^e = based on an analysis restricted to the subgroup of RRMS patients

682 EDSS = Expanded Disability Status Scale; kb = kilobases; MS = multiple sclerosis; MSCs = mesenchymal
683 stromal cells; n.c. = no control group; PPMS = primary progressive MS; qPCR = quantitative polymerase
684 chain reaction; RRMS = relapsing-remitting MS; SPMS = secondary progressive MS; TL = telomere length;
685 TRF = telomere restriction fragment

686 **Supplemental Table 1: Full list of studies assessed for inclusion in this systematic review.**

Number	First author	Year of publication	PubMed or preprint identifier	English or German?	Original article?	Samples from MS patients?	Measurement of TL?	Inclusion in review
1	Olerup	1990	1978948	yes	yes	yes	no	-
2	Charmley	1991	1674514	yes	yes	yes	no	-
3	Spurkland	1994	8071104	yes	yes	yes	no	-
4	Roth	1995	7499175	yes	yes	no	no	-
5	Torelli	1995	7561787	yes	yes	yes	no	-
6	Pham-Dinh	1995	7590972	yes	yes	no	no	-
7	Roth	1995	7593547	yes	yes	yes	no	-
8	Encinas	1996	8757345	yes	yes	no	no	-
9	De Boer	1998	9637494	yes	yes	no	no	-
10	Morris	1999	10223549	yes	yes	no	no	-
11	Bihl	1999	10224268	yes	yes	no	no	-
12	Allcock	1999	10369924	yes	yes	no	no	-
13	Steffler	1999	10384097	yes	yes	no	no	-
14	Kalman	1999	10554670	yes	no	no	no	-
15	Allcock	1999	10626741	yes	yes	yes	no	-
16	Oksenberg	2000	11164900	yes	no	no	no	-
17	Encinas	2001	11222494	yes	yes	no	no	-
18	Jawaheer	2001	11254450	yes	yes	no	no	-
19	Marrosu	2001	11741834	yes	yes	yes	no	-
20	Storch	2002	12146797	yes	yes	no	no	-
21	Mellai	2003	12559630	yes	yes	yes	no	-
22	Hug	2003	12817027	yes	yes	yes	yes	✓
23	Duvefelt	2003	14651518	yes	yes	yes	no	-
24	Rubio	2004	15014978	yes	yes	yes	no	-
25	Jagodic	2005	15634914	yes	yes	no	no	-
26	Muhallab	2005	15748954	yes	yes	no	no	-
27	Vyskhina	2005	16078049	yes	yes	yes	no	-
28	Weksler	2005	16141364	yes	yes	no	no	-
29	Thewissen	2005	16154497	yes	yes	yes	no	-
30	Marrosu	2006	16096810	yes	yes	yes	no	-
31	Saarela	2006	16596167	yes	yes	yes	no	-
32	Lamoury	2006	16793732	yes	yes	no	no	-
33	Rubio	2007	17256150	yes	yes	yes	no	-
34	Caillier	2008	18832704	yes	yes	yes	no	-
35	Ordóñez	2009	19421224	yes	yes	yes	no	-
36	Baecher-Allan	2011	21300823	yes	yes	yes	no	-
37	Montoya	2012	22770640	yes	yes	no	no	-
38	Oksenberg	2013	24289837	yes	no	no	no	-
39	Westerlind	2015	25159868	yes	yes	yes	no	-
40	Guan	2015	25424527	yes	yes	yes	yes	✓
41	Reddy	2017	28253983	yes	no	no	no	-
42	Cebrián-Silla	2017	28648897	yes	yes	no	no	-
43	Redondo	2018	28548004	yes	yes	yes	yes	✓
44	Guan	2018	30092167	yes	yes	yes	yes	✓
45	Liu	2019	31294790	yes	yes	yes	no	-
46	Din	2019	31407831	yes	yes	yes	no	-
47	Krysko	2019	31486104	yes	yes	yes	yes	✓
48	Habib	2020	32050150	yes	yes	yes	yes	✓
49	Carraro	2020	32499887	yes	no	no	no	-
50	Liu	2020	bioRxiv 2019.12.19.882522	yes	yes	no	no	-
51	Hecker	2020	medRxiv 2020.11.17.20232975	yes	yes	yes	yes	✓

688 The literature search was conducted using the databases PubMed, bioRxiv and medRxiv with the search
689 terms “multiple sclerosis” and “telomer*[†]”. This resulted in 51 articles that were screened and assessed for
690 eligibility (sorted by year of publication). Based on previously defined study selection criteria, we excluded 44
691 of these articles. The included studies (marked by ✓) were original research articles written in English or
692 German that presented data on telomere lengths (TL) measured in samples from patients with multiple
693 sclerosis (MS).