

1 **Blood pressure variability and night-time dipping assessed by 24-hour**
2 **ambulatory monitoring: cross-sectional association with cardiac structure in**
3 **adolescents**

4
5 Lucy Goudswaard (BSc)^{1, 2, 3*}, Sean Harrison (PhD)^{2,3}, Daniel Van De Klee (MChB
6 MRCP)⁴, Nishi Chaturvedi⁵ (MBBS MRCP MFPHM MSc MD), Debbie Lawlor (MSc
7 MChB PhD MPH MRCP MFPHM)^{2,3}, George Davey Smith (MA MD BChir MSc)^{2,3},
8 Alun Hughes (BSc MBBS PhD)⁵, Laura D Howe (BSc MSc PhD)^{2,3}

9
10 1 – School of Physiology, Pharmacology and Neuroscience at the University of Bristol

11 2 – MRC Integrative Epidemiology Unit at the University of Bristol

12 3 – Population Health Sciences, Bristol Medical School, University of Bristol

13 4 – Acute GP Team, BrisDoc Healthcare Services

14 5 - Institute of Cardiovascular Science, University College London

15
16 * **Corresponding author, and requests for reprints:** Lucy Goudswaard, Population
17 Health Sciences, Oakfield House, Oakfield Grove, Bristol BS8 2BN. Email:
18 lg14289@bristol.ac.uk, telephone: +44 (0)117 3311448

19 **Abstract**

20 Greater blood pressure (BP) variability and reduced night-time BP dipping are
21 associated with cardiovascular disease risk independently of mean BP in adults. This
22 study examines whether these associations are apparent in a general population of
23 adolescents. A cross-sectional analysis was undertaken in 587 UK adolescents (mean
24 age 17.7 years; 43.1% male). BP was measured in a research clinic and using 24-
25 hour ambulatory monitoring. We examined associations (for both systolic and diastolic
26 BP) of: 1) clinic and 24-hour mean BP; 2) measures of 24-hour BP variability: standard
27 deviation weighted for day/night (SDdn), variability independent of the mean (VIM) and
28 average real variability (ARV); and 3) night-time dipping with cardiac structures.
29 Cardiac structures were assessed by echocardiography: 1) left ventricular mass
30 indexed to height^{2.7} (LVMI^{2.7}); 2) relative wall thickness (RWT); 3) left atrial diameter
31 indexed to height (LADi) and 4) left ventricular internal diameter in diastole (LVIDD).
32 Higher systolic BP was associated with greater LVMI^{2.7}. Systolic and diastolic BP were
33 associated with greater RWT. Associations were inconsistent for LADi and LVIDD.
34 There was evidence for associations between both greater SDdn and ARV and higher
35 RWT (per 1 SD higher diastolic ARV, mean difference in RWT was 0.13 SDs, 95% CI
36 0.045 to 0.21); these associations with RWT remained after adjustment for mean BP.
37 There was no consistent evidence of associations between night-time dipping and
38 cardiac structure. In this general adolescent population study, associations between
39 BP variability and cardiac structure were apparent. Measurement of BP variability
40 might benefit cardiovascular risk assessment in adolescents.

41 **Introduction**

42

43 Higher blood pressure (BP) is associated with an increased risk of cardiovascular
44 disease (CVD) [1]. However, BP is inherently variable, and under a typical circadian
45 rhythm night-time BP is lower than daytime [2]. Loss of this nocturnal dipping pattern
46 in the general population of adults has been shown to be associated with
47 cardiovascular events and all-cause mortality, independent of 24-hour BP [2, 3]. There
48 is also evidence that non-circadian variability in BP may be associated with
49 cardiovascular disease [2, 4, 5].

50

51 Cardiovascular pathology starts in early life, with childhood BP levels known to track
52 across life [6], and early adulthood BP relating to mortality from CVD [7]. In adults,
53 higher left ventricular (LV) mass and left atrial enlargement are both associated with
54 higher risk of CVD [8, 9] and are considered evidence of target organ damage [10].
55 Another measure of left heart function, relative wall thickness (RWT, a measure of
56 remodelling [11]), has been suggested to be predictive of stroke among adult
57 populations [12, 13]. We previously demonstrated that in 17 year-olds that higher
58 body mass index (BMI) is causally related to higher LV mass indexed to height^{2.7}
59 (LVMi^{2.7}) [14], suggesting that there is meaningful variation in cardiac structure
60 measures in early adulthood. A study in adults from the general population indicated
61 a positive association between BP variability and LVMi [15]. Associations between BP
62 variability and cardiac structures in children with suspected hypertension have been
63 explored [16], but it is unclear if any associations are apparent in a general population
64 of adolescents.

65

66 In this study, we used data from a prospective cohort study of 587 UK adolescents to
67 assess the cross-sectional associations of mean BP (from clinic measurements and
68 ambulatory monitoring), BP variability, and night-time dipping, with measures of
69 cardiac structure at age 17, determined by echocardiography. The measures of
70 cardiac structure we consider are 1) LV mass (LVM), 2) RWT [11], 3) left atrial
71 diameter (LAD), and 4) left ventricular internal diameter during diastole (LVIDD, a
72 measure of the initial stretching of cardiomyocytes before contraction (preload)) [17].
73 Together these represent a comprehensive assessment of left heart structure, with
74 functional significance [18].

75

76 **Methods**

77

78 *Participants*

79 ALSPAC is a population-based birth cohort. The study recruited pregnant women from
80 the Avon area (Bristol) in the South West of England, with an expected delivery date
81 between 1st April 1991 and 31st December 1992 [19]. From the 15,643 pregnant
82 women enrolled, 14,889 children were born and alive at one year [19, 20] (Figure 1).
83 Since birth, participants have been followed up, using questionnaires, links to routine
84 data, and research clinics. The study website provides further details of the cohort and
85 a data dictionary [http://www.bris.ac.uk/alspac/researchers/data-access/data-](http://www.bris.ac.uk/alspac/researchers/data-access/data-dictionary/)
86 [dictionary/](http://www.bris.ac.uk/alspac/researchers/data-access/data-dictionary/). Approval was obtained from the local ethics committee and the ALSPAC
87 Law and Ethics committee.

88

89 *Inclusion/Exclusion Criteria*

90 This was a cross-sectional study conducted in participants who attended the 17-year
91 follow-up clinic of ALSPAC. Participants were eligible if they attended both the
92 echocardiography and the 24-hour blood pressure sub-studies at the 17-year clinic
93 visit. We a priori decided to exclude participants if they were pregnant or reported
94 taking antihypertensive medication or having a congenital cardiac anomaly, but this
95 did not apply to any participants in the study.

96

97 *Exposures*

98 1) *Clinic and 24-hour ambulatory blood pressure measurements*

99 Clinic systolic blood pressure (SBP) and diastolic blood pressure (DBP) were
100 measured with an OMRON 705 IT oscillometric BP monitor (Omron Corporation,
101 Kyoto, Japan) with the participant sitting and at rest with their arm supported.
102 Readings were taken in accordance with European Society of Hypertension
103 guidelines [21]. We used the average of the final two measures from the right arm in
104 our analyses.

105

106 Participants were fitted with a 24-hour ambulatory blood pressure monitor (ABPM)
107 (Spacelabs 90217, Washington, U.S.) according to the manufacturer's instructions.
108 This measured their brachial BP, with readings taken every 30 minutes during the day
109 and hourly at night. Participants were permitted to perform usual physical activities,
110 although a diary of activities was recorded. Daytime and night-time were defined by
111 the participant. The expected maximum number of total readings per participant
112 therefore varied depending on the duration of the night-time period. For this study, we
113 included participants with at least 14 readings during the self-defined daytime and at
114 least 5 readings during the self-defined night-time [22, 23].

115 We estimated the mean 24-hour SBP and DBP using the ABPM data, and also
116 estimated the daytime and night-time means for SBP and DBP.

117

118 2) *Measures of blood pressure variability*

119 We estimated variability in the 24-hour systolic and diastolic measures in three
120 different ways. 1) Standard deviation weighted for daytime and night-time (SDdn) [24],

121 calculated as: $\frac{(\text{day SD} \times \text{day hours}) + (\text{night SD} \times \text{night hours})}{\text{day hours} + \text{night hours}}$. 2) Average real variability (ARV),

122 derived as the average of the differences between consecutive BP measurements

123 [25], using the formula: $\frac{1}{N-1} \sum_{k=1}^{N-1} |BP_{k+1} - BP_k|$, where N is the number of valid blood

124 pressure (BP) readings and k is the number of the individual reading. To derive this

125 variable, each individual blood pressure reading and the order of readings was

126 required (at least 14 daytime readings and 5 night-time readings). 3) Variability

127 independent of the mean (VIM) [26], derived using the formula: $\frac{SDdn}{\text{mean}^x} \times$

128 *population mean*^x, where x is derived from the regression coefficient β from the

129 equation: $\ln(SD) = \alpha + \beta \ln(\text{mean})$.

130

131 3) *Dipping variables*

132 We estimated night-time dipping as a percentage difference between daytime and

133 night-time means $\left(\frac{24\text{hr daytime BP} - 24\text{hr nighttime BP}}{24\text{hr daytime BP}} \times 100 \right)$ [27]. We considered

134 participants with ≥10% reduction in night-time BP compared to daytime BP as ‘normal

135 dippers’, and those with <10% reduction or an increase as ‘non-dippers’ in a binary

136 dipping variable [3, 27]. We also grouped participants into four dipping groups of 1)

137 Normal dippers (>10%, ≤20%), 2) Non-dippers (>0%, ≤10%), 3) Extreme dippers

138 (>20%) and 4) Risers (<0%) to allow comparison of dipping distribution with previous
139 studies [28], however only the simpler continuous and dichotomised variables are
140 included as an exposure in our analyses because of the relatively small sample size.

141

142 *Outcomes: Echocardiography Measurements*

143 Echocardiography was performed on a quasi-random subsample (based on date of
144 research clinic attendance) using an HDI 5000 ultrasound machine (Philips,
145 Massachusetts, U.S.) equipped with a P4-2 Phased Array ultrasound transducer. One
146 of two echocardiographers examined participants using a standard examination
147 protocol, in accordance with the American Society of Echocardiography (ASE)
148 guidelines [29]. All measures were made in end diastole and were calculated as the
149 mean of three measurements. LV mass was calculated from end-diastolic ventricular
150 septal wall thickness (SWTd), left ventricular dimension (LVIDd), and left ventricular
151 posterior wall thickness (PWT) according to the ASE formula: $0.8 \times (1.04 \times$
152 $[(SWT + LVIDD + PWT)^3 - (LVIDD)^3]) + 0.6$. LV mass was then indexed to height^{2.7}
153 (LVMi^{2.7}) using the Troy formula in order to account for differences in body sizes [30].
154 Left atrial diameter was indexed to height [9] (LADi). Relative wall thickness (RWT)
155 was calculated using the formula: $\frac{PWT+SWT}{LVIDD}$.

156

157 *Confounders:*

158 We considered variables as confounders if they had plausible relations with BP and
159 cardiovascular risk [31]. Maternal confounders were self-reported in questionnaires
160 completed during pregnancy: educational attainment (categorised as university
161 degree or higher, Advanced-levels (exams usually taken around 18 years and

162 necessary for university entry), Ordinary-levels (exams usually taken around 16 years,
163 which was the minimum UK school leaving age at the time these participants were this
164 age), or lower than Ordinary-levels, including vocational education); pre-pregnancy
165 body mass index (BMI; in kg/m²); age at delivery (categorised as <25 years, 25-35
166 years, and >35 years); parity, and highest head of household occupational social
167 class. We selected these maternal variables as the mother's socioeconomic position
168 (SEP) represents the participant's family SEP. SEP has been shown to influence BMI
169 (a key determinant of both BP and LVM [14]), blood pressure [32], and left ventricular
170 structure [33]. Maternal pre-pregnancy BMI has also been shown to affect offspring
171 BP and cardiovascular outcomes [34].

172 Child-based confounders were from a combination of self-reported questionnaire and
173 clinic-based data. These include: age (in months) at year 17 clinic visit; smoking at
174 age 17 (<1 or ≥1 cigarette per week from self-report); minutes of moderate to vigorous
175 physical activity at age 15 assessed by uniaxial ActiGraph accelerometer (Florida,
176 U.S.) and used as quintiles in the analysis; percentage fat mass (assessed by dual
177 energy-X-ray absorptiometry (DXA) at the 17-year clinic using a Lunar prodigy narrow
178 fan beam densitometer); and height measured at the 17-year clinic using a Harpenden
179 stadiometer (Holtain Ltd, Crymych, UK). These child-based variables were selected
180 as they likely affect cardiovascular health [14].

181

182 *Statistical analysis:*

183 All analyses were performed using Stata version 15.1 (StataCorp, TX).

184 We used multivariable linear regression to estimate the associations between all blood
185 pressure exposures and cardiac structure outcomes defined above. We standardised
186 all exposures and outcomes before analysis to have a mean of zero and SD of one.

187 As such, all regression results are interpreted as the SD change in the outcome for a
188 SD change in the exposure. For the binary dipping variables, the regression result can
189 be interpreted as the change in outcome variable in SDs comparing the non-dippers
190 category with the dippers.

191 Associations between each of the 18 BP exposures (for both SBP and DBP: clinic BP,
192 24h mean BP, mean daytime BP, mean night-time BP, SDdn, ARV, VIM and
193 continuous and binary dipping variables) and 4 measures of cardiac structure (LVMi^{2.7},
194 LADi, RWT, LVIDD) were assessed using multivariable linear regression. Three
195 models were estimated: i) adjustment for sex and age at year 17 clinic visit, ii)
196 additional adjustment for potential confounders: maternal education, age at delivery,
197 parity, pre-pregnancy BMI; household socio-economic class; smoking at age 17;
198 minutes of moderate to vigorous physical activity at age 15; DXA-determined fat mass
199 and height and height² at age 17, iii) further adjustment for average 24-hour blood
200 pressure (systolic or diastolic as appropriate for the exposure) to evaluate whether any
201 associations between BP variability and dipping were independent of 24-hour average
202 BP.

203 To test for interactions between sex and each exposure, we regressed each outcome
204 on each exposure, with sex and an interaction term for the exposure and sex as
205 covariables. There was no strong evidence of any interactions by sex from these
206 analyses ($p > 0.1$ for all interaction terms), and as such, all results are presented for
207 males and females combined. To check for linearity of a) blood pressure - cardiac
208 structure and b) mean blood pressure – blood pressure variability associations, we
209 conducted likelihood ratio tests comparing models where fifths of the exposure variable
210 were treated as numeric and categorical variables. There was no evidence of non-
211 linearity in the associations between blood pressure variables and cardiac structure

212 outcomes, and so results are presented with continuous measures of blood pressure
213 as the exposures. As a sensitivity analysis and to account for nonlinearity in the
214 associations between blood pressure and blood pressure variability, the association
215 between blood pressure variability/dipping exposures and cardiac structure outcomes
216 were also explored adjusting for categorical fifths of average blood pressure. We did
217 not correct the results for multiple testing, as multiple testing correction emphasises
218 the inappropriate dichotomisation of p-values into significant versus non-significant
219 [35-38]. Furthermore, in this analysis, exposures are correlated measures of a single
220 underlying construct BP, and outcomes are measures of a single underlying construct,
221 cardiac structure. A Bonferroni multiple testing correction would therefore be over-
222 conservative. We interpret the overall pattern of results rather than focusing on single
223 p-values, and use the magnitude of coefficients and confidence intervals to assess the
224 strength of associations.

225

226 *Missing Data*

227 Of the 587 participants with complete data on all 18 exposures and 4 outcomes, 196
228 (33.3%) also had complete data including all confounders. In the full dataset, individual
229 confounder variables were missing between 0% and 43.4% of observations, with eight
230 of 11 variables having less than 13% missingness (Supplementary Table 1a). We used
231 multivariate multiple imputation by chained equations to impute missing confounder
232 data [39, 40]. The imputation model included all exposures (excluding dipping
233 variables, which were derived from other variables in the imputation model), outcomes
234 and confounding variables, as well as weight and BMI at age 17, and maternal height.
235 Fully conditional specification was used, with linear regression for continuous
236 variables, multinomial regression for categorical variables and logistic regression for

237 binary variables (Supplementary Table 1b). We created twenty imputed datasets and
238 used Rubin's rules to combine analysis results. Variable distributions were consistent
239 between the imputed and the observed data sets (Supplementary Table 1a). We also
240 conducted a complete case sensitivity analysis in the 196 participants with complete
241 data for all variables (Supplementary Table 2).

242

243 **Results**

244

245 *Participant characteristics*

246 A total of 587 participants were included in our analysis. Figure 1 shows how this
247 cohort size was reached from the participants enrolled in ALSPAC at baseline.
248 Compared with the full ALSPAC cohort, the participants included in our analysis
249 tended to have mothers who were more educated and older when the participant was
250 born and be from a family with a higher head of household occupational social class;
251 females were also more likely to be included. Clinic blood pressure, minutes of
252 moderate to vigorous physical activity at age 15 and DXA-determined fat mass were
253 similar compared with the full ALSPAC cohort (Supplementary Table 1b).

254 Of the included participants, 43.1% were male, mean age was 17.7 (SD 0.3) years,
255 2.1% reported smoking 1 or more cigarettes a week. Mean clinic systolic and diastolic
256 blood pressure were 114.4 mmHg (SD 9.7 mmHg) and 64.5 mmHg (SD 5.8 mmHg),
257 respectively (table 1). 22.3% of participants were categorised as non-dippers for
258 systolic BP, and 6.3% for diastolic BP. Mean LVMi^{2.7} was 27.7 g/m^{2.7} (SD 5.9 g/m^{2.7}),
259 LADi was 1.88 cm/m (SD 0.22 cm/m), LVIDD was 4.52 cm (SD 0.44 cm) and RWT
260 was 0.37 (SD 0.06).

261 Males tended to have higher systolic blood pressure, pulse pressure and mean arterial
262 pressure, while females had higher diastolic blood pressure. Night-time dipping was
263 similar between sexes. Males tended to have higher systolic and diastolic BP
264 variability than females. Ventricular measures were higher in males, while atrial index
265 and wall thickness were similar between sexes (Table 1).

266

267 *1) Associations between clinic BP measurements and cardiac structures*

268 Clinic SBP was associated with higher LVMi^{2.7} ($\beta = 0.23$ SDs per SD increase in SBP,
269 95 % CI 0.15 to 0.32, $P=1.6 \times 10^{-7}$) and higher RWT ($\beta = 0.29$ SDs per SD increase in
270 SBP, 95 % CI 0.19 to 0.39, $P=1.2 \times 10^{-8}$) after adjustment for confounders (Table 2).

271 There was no evidence of associations with LADi or LVIDD.

272 Clinic DBP was associated with higher RWT ($\beta = 0.24$, 95 % CI 0.15 to 0.33, $P=1.4 \times 10^{-7}$)
273 and lower LADi and LVIDD. There was no evidence of an association between clinic
274 DBP and LVMi^{2.7}.

275 Results were broadly similar in the age and sex only adjusted models (Supplementary
276 Table 4).

277

278 *Associations between ambulatory averages of BP and cardiac structures*

279 There was evidence for a positive association between 24-hour mean SBP and
280 LVMi^{2.7} ($\beta = 0.17$ SDs per SD higher 24-hour SBP, 95% CI 0.093 to 0.25, $P=1.8 \times 10^{-5}$),
281 which was slightly smaller in magnitude than the association for clinic SBP (Figure
282 2). Daytime and night-time means for SBP also showed positive associations with
283 LVMi^{2.7}, with similar magnitudes to 24-hour mean SBP. The 24-hour mean SBP also
284 showed a positive association with RWT ($\beta = 0.18$, 95% CI 0.089 to 0.26, $P=8.1 \times 10^{-5}$),
285 with similar magnitudes of association seen for daytime and night-time mean SBP.

286 There was no evidence of associations between 24-hour, day-time or night-time mean
287 SBP and LADi or LVIDD.

288 There was evidence for associations between all 24-hour DBP measures (mean, day
289 and night) and RWT, with similar magnitudes of associations between the three
290 exposures, but no evidence of associations for the other measures of cardiac
291 structure.

292

293 *2) Associations between 24-hour blood pressure variability and cardiac structures*

294 ARV of SBP was associated with LVMI^{2.7} after adjustment for confounders (Table 2).

295 All three measures of SBP variability (SDdn, ARV, VIM) were positively associated
296 with RWT (SBP SDdn and RWT: $\beta = 0.15$, 95% CI 0.061 to 0.23, $P=7.9 \times 10^{-4}$). There
297 was no consistent evidence of associations between SBP variability and LADi or
298 LVIDD.

299 DBP variability measures were positively associated with RWT, although evidence of
300 association was weaker for VIM than for SDdn and ARV. ARV and VIM of DBP were
301 also positively associated with LVMI^{2.7} and LADi.

302

303 After further adjustment for 24-hour BP (Table 3), associations of SBP and DBP
304 variability with LVMI^{2.7} and RWT attenuated towards the null. Some associations with
305 RWT remained: before adjustment for mean DBP the standardised association
306 between ARV of DBP and RWT was 0.13 (95% CI 0.045 to 0.21, $P=2.7 \times 10^{-3}$). After
307 adjustment for mean DBP it was 0.11 (95% CI 0.022 to 0.19, $P=0.014$).

308

309 *3) Associations between night-time BP dipping and cardiac structures*

310 The results provided no evidence for associations between either of the dipping
311 variables (percentage difference and categorical) and cardiac structures
312 (Supplementary Table 4, Table 2, Table 3). This was true for both SBP and DBP.

313

314 *Complete case analysis*

315 For all analyses, there were similar magnitudes of estimates between the complete
316 cases and imputed analyses (Supplementary Table 2 and Table 3). However, as there
317 was less power in the complete case analysis, confidence intervals were wider.

318

319 *Sensitivity analysis*

320 A likelihood ratio test was performed to compare the association between average
321 blood pressure (in quintiles as both a categorical and continuous variable) and blood
322 pressure variability. Results suggest that this relationship is nonlinear (Supplementary
323 Table 3). The same was performed for blood pressure/blood pressure variability and
324 cardiac structure outcomes, which suggested that these associations are indeed linear
325 (Supplementary Table 3). Regression models were then repeated for exposures
326 related to blood pressure variability and dipping, but adjusting for categorical quintiles
327 of blood pressure rather than continuous. Estimates from this analysis (Supplementary
328 Table 5) were broadly similar to Table 3.

329

330 **Discussion**

331

332 In this cross-sectional study of a general population of adolescents, we explored the
333 association between both blood pressure variability and dipping and measures of
334 cardiac structure. Average 24-hour and clinic blood pressure measurements showed

335 positive associations of a similar magnitude with cardiac structures such as RWT, for
336 both systolic and diastolic measures. Measures of 24-hour variability (SDdn and ARV)
337 were positively associated with RWT, with ARV also showing a positive association
338 with LVMi^{2.7}. After adjustment for 24-hour mean BP, some associations persisted
339 including the association between ARV of DBP and RWT. No associations were found
340 between night-time dipping and cardiac structures in this cohort.

341

342 Variability in BP over 24 hours in this sample of adolescents was similar in magnitude
343 to that reported in studies of adults [41, 42]. In contrast, the percentage of normal
344 dipping was higher than in adult studies [28]. In adults, greater variability in BP and
345 non-dipping are associated with cardiovascular risk, independently of average BP [2,
346 28, 43]. Two previous studies, restricted to hypertensive children, did not find an
347 association between 24-hour BP variability and LVMi^{2.7} [16, 44]. Similarly, several
348 studies have found little association between night-time dipping and LVMi in
349 hypertensive children [27, 45, 46]. To our knowledge, this is the first study to explore
350 these associations in a general population cohort of adolescents.

351

352 Higher mean SBP is associated with higher LVMi^{2.7} and RWT in our study. This finding,
353 together with our previous finding that higher BMI is causally related to higher LV mass
354 [14], suggests that higher values of LVMi^{2.7} and RWT are, on average, related to
355 adverse cardiovascular health even in this young population, rather than due to high
356 levels of fitness. This implies that the cardiac structures are meaningful markers of
357 cardiac health in this young population. Both DBP and SBP were associated with RWT
358 to a similar extent. However, unlike SBP, DBP did not show associations with LVMi^{2.7}.
359 This could reflect a greater importance of systolic pressure (and by implication pulse

360 pressure on LV mass). It may also be at least partially driven by regression dilution
361 bias [47], which is the biasing of the regression slope to towards zero, because of the
362 greater levels measurement error for DBP compared with SBP [48].

363

364 Our results indicate that some associations between greater BP variability and cardiac
365 structure remain once average BP was accounted for, such as the positive association
366 between diastolic measure of ARV and RWT. These findings support the notion that
367 the influence of BP variability on cardiac structure may begin early in life [49]. It is
368 unclear which measurement used is superior in determining blood pressure variability
369 as a risk factor. SDdn accounts for length of day and night, however it is still dependent
370 on mean BP. The derivation of VIM attempts to overcome this issue as dividing the
371 SD by the mean to the power x removes correlation between mean and SD [50]. ARV
372 uses the differences in consecutive BP readings, therefore it is able to capture more
373 frequent spikes in BP than the other methods [51]. Both systolic and diastolic ARV
374 have been suggested to predict total and cardiovascular mortality [43]. ABPMs are
375 currently recommended for diagnosis of hypertension among adolescents [52]; this
376 study suggests that other ABPM-derived information such as ARV might aid
377 identification of adolescents who are at an increased cardiovascular risk. In general,
378 all three measures of blood pressure variability included provided similar magnitudes
379 of associations with cardiac structures.

380

381 We found no convincing evidence for an association between non-dipping and cardiac
382 structure in young people. Findings in older adults are inconsistent [53] and most
383 studies finding a positive association between non-dipping and LV mass have been
384 conducted in hypertensive individuals [54]. The majority of the participants in our

385 sample had blood pressures in the normotensive range; other studies which included
386 such participants have also not found evidence of an association [55].

387

388 The current study has several limitations. It is possible that our study may have lacked
389 statistical power to detect some associations between BP variability and dipping and
390 cardiac structure independently of mean BP. Furthermore, the cohort are of European
391 descent and in a localised area of the UK, which may limit its generalisability. The
392 study uses cross-sectional data, which limits our ability to determine the true direction
393 of the association between blood pressure and cardiac structures, and whether this
394 relationship may be causal. The participants included in our analysis are more affluent
395 than the full ALSPAC cohort [19]. However, whilst this does affect the generalisability
396 of the study, it does not necessarily lead to bias in the estimates of associations.
397 ABPMs have been reported to affect sleep quality due to cuff inflation. This may affect
398 night time dipping levels and therefore weaken associations [56]. Additionally, we were
399 not able to assess longer term blood pressure variability, including visit-to-visit
400 variability, which may be another meaningful value in adolescents to predict adult
401 hypertension [49].

402

403 Our results show that, in adolescents, higher clinic and 24-hour BP, as well as an
404 increase in blood pressure variability, are associated with more adverse cardiac
405 structure. Non-dipping was not found to be associated with cardiac structure. Our
406 study implies that measurement of BP variability, but not night-time dipping, might add
407 to the assessment of cardiovascular risk in adolescents. However, this finding would
408 benefit from replication in larger studies. It would be valuable to explore whether BP
409 variability and dipping in adolescents track across the life course, and whether these

410 BP measurements in adolescents are predictive of longer-term cardiovascular
411 outcomes.

412

413 **Data Availability:** Because of the sensitive nature of the data collected for this study,
414 requests to access the dataset from qualified researchers trained in human subject
415 confidentiality protocols may be submitted via the Avon Longitudinal Study of Parents
416 and Children (ALSPAC) website <http://www.bristol.ac.uk/alspac/researchers/access/>.

417

418 **Conflicts of interest:** None.

419

420 **Funding statement:** The UK Medical Research Council and Wellcome (Grant ref:
421 102215/2/13/2) and the University of Bristol provide core support for ALSPAC. LJJ is
422 funded by a University of Bristol alumni PhD studentship as part of the British Heart
423 Foundation 4-year Integrative Cardiovascular science programme. LDH is funded by
424 a Career Development Award from the UK Medical Research Council
425 (MR/M020894/1). LDH, SH, KL, DAL and GDS work in a unit that receives funding
426 from the University of Bristol and the UK Medical Research Council (MC_UU_00011/1
427 and MC_UU_00011/6-7). This grant was supported by a grant from the British Heart
428 Foundation.

429

430 **Acknowledgements:** We are extremely grateful to all the families who took part in
431 this study, the midwives for their help in recruiting them, and the whole ALSPAC team,
432 which includes interviewers, computer and laboratory technicians, clerical workers,
433 research scientists, volunteers, managers, receptionists and nurses. We thank Kirsten
434 Leyland for her support with analyses.

435

436 **Supplementary materials**

437

438 Supplementary file (Supplementary_Tables_Int_J_hyp.xlsx) contains four
439 supplementary tables:

- 440 1. **Supplementary Table 1a**: Distributions of imputed characteristics in the
441 imputation datasets and in observed data (i.e. without imputation).
- 442 2. **Supplementary Table 1b**: Comparing participants included in the analysis with
443 those excluded due to missing data
- 444 3. **Supplementary Table 2**. Complete case associations of BP variability and
445 dipping with cardiac structure after adjustment for confounders and 24-hour
446 mean BP
- 447 4. **Supplementary Table 3**. Likelihood ratio tests to assess non-linearity of
448 associations
- 449 5. **Supplementary Table 4**. Associations of blood pressure measurements and
450 24-hour ambulatory blood pressure with cardiac structure (adjusted for age and
451 sex)
- 452 6. **Supplementary Table 5**. Associations between blood pressure
453 variability/dipping and cardiac structures adjusting for categorical quintiles of
454 average blood pressure
- 455 7. **STROBE checklist**

456 **References**

- 457 1. Rapsomaniki, E., et al., *Blood pressure and incidence of twelve*
458 *cardiovascular diseases: lifetime risks, healthy life-years lost, and age-specific*
459 *associations in 1.25 million people*. Lancet, 2014. **383**(9932): p. 1899-911.
- 460 2. Yano, Y. and K. Kario, *Nocturnal blood pressure and cardiovascular disease:*
461 *a review of recent advances*. Hypertens Res, 2012. **35**(7): p. 695-701.
- 462 3. Hansen, T.W., et al., *Predictive role of the nighttime blood pressure.*
463 *Hypertension*, 2011. **57**(1): p. 3-10.
- 464 4. Wang, J., et al., *Visit-to-visit blood pressure variability is a risk factor for all-*
465 *cause mortality and cardiovascular disease: a systematic review and meta-*
466 *analysis*. J Hypertens, 2017. **35**(1): p. 10-17.
- 467 5. Stevens, S.L., et al., *Blood pressure variability and cardiovascular disease:*
468 *systematic review and meta-analysis*. BMJ, 2016. **354**: p. i4098.
- 469 6. de Swiet, M., P. Fayers, and E.A. Shinebourne, *Blood pressure in first 10*
470 *years of life: the Brompton study*. British Medical Journal, 1992. **304**(6818): p.
471 23-26.
- 472 7. McCarron, P., et al., *Blood pressure in young adulthood and mortality from*
473 *cardiovascular disease*. The Lancet, 2000. **355**(9213): p. 1430-1431.
- 474 8. Levy, D., et al., *Prognostic implications of echocardiographically determined*
475 *left ventricular mass in the Framingham Heart Study*. N Engl J Med, 1990.
476 **322**(22): p. 1561-6.
- 477 9. Armstrong, A.C., et al., *Left atrial dimension and traditional cardiovascular risk*
478 *factors predict 20-year clinical cardiovascular events in young healthy adults:*
479 *the CARDIA study*. Eur Heart J Cardiovasc Imaging, 2014. **15**(8): p. 893-9.

- 480 10. Mancusi, C., et al., *Left atrial dilatation: A target organ damage in young to*
481 *middle-age hypertensive patients. The Campania Salute Network.* Int J
482 *Cardiol*, 2018. **265**: p. 229-233.
- 483 11. Gaasch, W.H. and M.R. Zile, *Left ventricular structural remodeling in health*
484 *and disease: with special emphasis on volume, mass, and geometry.* J Am
485 *Coll Cardiol*, 2011. **58**(17): p. 1733-40.
- 486 12. Wang, S., et al., *Left ventricular hypertrophy, abnormal ventricular geometry*
487 *and relative wall thickness are associated with increased risk of stroke in*
488 *hypertensive patients among the Han Chinese.* Hypertens Res, 2014. **37**(9):
489 p. 870-4.
- 490 13. Di Tullio, M.R., et al., *Left ventricular mass and geometry and the risk of*
491 *ischemic stroke.* Stroke, 2003. **34**(10): p. 2380-4.
- 492 14. Wade, K.H., et al., *Assessing the causal role of body mass index on*
493 *cardiovascular health in young adults: Mendelian randomization and recall-by-*
494 *genotype analyses.* Circulation, 2018. **138**(20): p. 2187-2201.
- 495 15. Sega, R., et al., *Blood pressure variability and organ damage in a general*
496 *population: results from the PAMELA study (Pressioni Arteriose Monitorate E*
497 *Loro Associazioni).* Hypertension, 2002. **39**(2 Pt 2): p. 710-4.
- 498 16. Bjelakovic, B., et al., *Blood pressure variability and left ventricular mass index*
499 *in children.* J Clin Hypertens (Greenwich), 2013. **15**(12): p. 905-9.
- 500 17. Zimpfer, M. and S.F. Vatner, *Effects of acute increases in left ventricular*
501 *preload on indices of myocardial function in conscious, unrestrained and*
502 *intact, tranquilized baboons.* J Clin Invest, 1981. **67**(2): p. 430-8.

- 503 18. Cikes, M. and S.D. Solomon, *Beyond ejection fraction: an integrative*
504 *approach for assessment of cardiac structure and function in heart failure*. Eur
505 Heart J, 2016. **37**(21): p. 1642-50.
- 506 19. Boyd, A., et al., *Cohort Profile: the 'children of the 90s'--the index offspring of*
507 *the Avon Longitudinal Study of Parents and Children*. Int J Epidemiol, 2013.
508 **42**(1): p. 111-27.
- 509 20. Fraser, A., et al., *Cohort Profile: the Avon Longitudinal Study of Parents and*
510 *Children: ALSPAC mothers cohort*. Int J Epidemiol, 2013. **42**(1): p. 97-110.
- 511 21. O'Brien, E., et al., *European Society of Hypertension recommendations for*
512 *conventional, ambulatory and home blood pressure measurement*. J
513 Hypertens, 2003. **21**(5): p. 821-48.
- 514 22. Krause, T., et al., *Management of hypertension: summary of NICE guidance*.
515 BMJ, 2011. **343**: p. d4891.
- 516 23. Anstey, D.E., et al., *Diagnosing Masked Hypertension Using Ambulatory*
517 *Blood Pressure Monitoring, Home Blood Pressure Monitoring, or Both?*
518 Hypertension, 2018. **72**(5): p. 1200-1207.
- 519 24. Bilo, G., et al., *A new method for assessing 24-h blood pressure variability*
520 *after excluding the contribution of nocturnal blood pressure fall*. J Hypertens,
521 2007. **25**(10): p. 2058-66.
- 522 25. Mena, L., et al., *A reliable index for the prognostic significance of blood*
523 *pressure variability*. J Hypertens, 2005. **23**(3): p. 505-11.
- 524 26. Hara, A., et al., *Randomised double-blind comparison of placebo and active*
525 *drugs for effects on risks associated with blood pressure variability in the*
526 *Systolic Hypertension in Europe trial*. PLoS One, 2014. **9**(8): p. e103169.

- 527 27. Seeman, T., O. Hradský, and J. Gilík, *Nocturnal blood pressure non-dipping is*
528 *not associated with increased left ventricular mass index in hypertensive*
529 *children without end-stage renal failure.* Eur J Pediatr, 2016. **175**(8): p. 1091-
530 7.
- 531 28. Salles, G.F., et al., *Prognostic Effect of the Nocturnal Blood Pressure Fall in*
532 *Hypertensive Patients: The Ambulatory Blood Pressure Collaboration in*
533 *Patients With Hypertension (ABC-H) Meta-Analysis.* Hypertension, 2016.
534 **67**(4): p. 693-700.
- 535 29. Lang, R.M., et al., *Recommendations for chamber quantification: a report from*
536 *the American Society of Echocardiography's Guidelines and Standards*
537 *Committee and the Chamber Quantification Writing Group, developed in*
538 *conjunction with the European Association of Echocardiography, a branch of*
539 *the European Society of Cardiology.* J Am Soc Echocardiogr, 2005. **18**(12): p.
540 1440-63.
- 541 30. de Simone, G., et al., *Left ventricular mass and body size in normotensive*
542 *children and adults: assessment of allometric relations and impact of*
543 *overweight.* J Am Coll Cardiol, 1992. **20**(5): p. 1251-60.
- 544 31. Banegas, J.R., et al., *Relationship between Clinic and Ambulatory Blood-*
545 *Pressure Measurements and Mortality.* N Engl J Med, 2018. **378**(16): p. 1509-
546 1520.
- 547 32. Howe, L.D., D.A. Lawlor, and C. Propper, *Trajectories of socioeconomic*
548 *inequalities in health, behaviours and academic achievement across*
549 *childhood and adolescence.* J Epidemiol Community Health, 2013. **67**(4): p.
550 358-64.

- 551 33. Laitinen, T.T., et al., *Association of Socioeconomic Status in Childhood With*
552 *Left Ventricular Structure and Diastolic Function in Adulthood: The*
553 *Cardiovascular Risk in Young Finns Study*. JAMA Pediatr, 2017. **171**(8): p.
554 781-787.
- 555 34. Harville, E.W., J.W. Apolzan, and L.A. Bazzano, *Maternal Pre-Pregnancy*
556 *Cardiovascular Risk Factors and Offspring and Grandoffspring Health:*
557 *Bogalusa Daughters*. Int J Environ Res Public Health, 2018. **16**(1).
- 558 35. Sterne, J.A. and G. Davey Smith, *Sifting the evidence-what's wrong with*
559 *significance tests?* BMJ, 2001. **322**(7280): p. 226-31.
- 560 36. Amrhein, V., S. Greenland, and B. McShane, *Scientists rise up against*
561 *statistical significance*. Nature, 2019. **567**(7748): p. 305-307.
- 562 37. Perneger, T.V., *What's wrong with Bonferroni adjustments*. BMJ, 1998.
563 **316**(7139): p. 1236-8.
- 564 38. Harrington, D., et al., *New Guidelines for Statistical Reporting in the*. N Engl J
565 Med, 2019. **381**(3): p. 285-286.
- 566 39. White, I.R., P. Royston, and A.M. Wood, *Multiple imputation using chained*
567 *equations: Issues and guidance for practice*. Stat Med, 2011. **30**(4): p. 377-99.
- 568 40. White, I.R. and J.B. Carlin, *Bias and efficiency of multiple imputation*
569 *compared with complete-case analysis for missing covariate values*. Stat
570 Med, 2010. **29**(28): p. 2920-31.
- 571 41. Muntner, P., et al., *Low correlation between visit-to-visit variability and 24-h*
572 *variability of blood pressure*. Hypertens Res, 2013. **36**(11): p. 940-6.
- 573 42. Madden, J.M., et al., *Correlation between short-term blood pressure variability*
574 *and left-ventricular mass index: a meta-analysis*. Hypertens Res, 2016. **39**(3):
575 p. 171-7.

- 576 43. Hansen, T.W., et al., *Prognostic value of reading-to-reading blood pressure*
577 *variability over 24 hours in 8938 subjects from 11 populations*. Hypertension,
578 2010. **55**(4): p. 1049-57.
- 579 44. Leisman, D., et al., *Blood pressure variability in children with primary vs*
580 *secondary hypertension*. J Clin Hypertens (Greenwich), 2014. **16**(6): p. 437-
581 41.
- 582 45. Belsha, C.W., et al., *Influence of diurnal blood pressure variations on target*
583 *organ abnormalities in adolescents with mild essential hypertension*. Am J
584 Hypertens, 1998. **11**(4 Pt 1): p. 410-7.
- 585 46. Lee, H., et al., *Left ventricular hypertrophy and diastolic function in children*
586 *and adolescents with essential hypertension*. Clin Hypertens, 2015. **21**: p. 21.
- 587 47. Hutcheon, J.A., A. Chioloro, and J.A. Hanley, *Random measurement error*
588 *and regression dilution bias*. BMJ, 2010. **340**: p. c2289.
- 589 48. Picone, D.S., et al., *Accuracy of Cuff-Measured Blood Pressure: Systematic*
590 *Reviews and Meta-Analyses*. J Am Coll Cardiol, 2017. **70**(5): p. 572-586.
- 591 49. Chen, W., et al., *Adult hypertension is associated with blood pressure*
592 *variability in childhood in blacks and whites: the bogalusa heart study*. Am J
593 Hypertens, 2011. **24**(1): p. 77-82.
- 594 50. Mena, L.J., et al., *24-Hour Blood Pressure Variability Assessed by Average*
595 *Real Variability: A Systematic Review and Meta-Analysis*. J Am Heart Assoc,
596 2017. **6**(10).
- 597 51. DeBarmore, B., et al., *Association of ambulatory blood pressure variability*
598 *with coronary artery calcium*. J Clin Hypertens (Greenwich), 2018. **20**(2): p.
599 289-296.

- 600 52. Flynn, J.T. and B.E. Falkner, *New Clinical Practice Guideline for the*
601 *Management of High Blood Pressure in Children and Adolescents.*
602 Hypertension, 2017. **70**(4): p. 683-686.
- 603 53. Fagard, R., J.A. Staessen, and L. Thijs, *The relationships between left*
604 *ventricular mass and daytime and night-time blood pressures: a meta-analysis*
605 *of comparative studies.* J Hypertens, 1995. **13**(8): p. 823-9.
- 606 54. Woodiwiss, A.J., et al., *Impact of Blunted Nocturnal Blood Pressure Dipping*
607 *on Cardiac Systolic Function in Community Participants Not Receiving*
608 *Antihypertensive Therapy.* Am J Hypertens, 2018. **31**(9): p. 1002-1012.
- 609 55. Bello, N.A., et al., *Associations of awake and asleep blood pressure and*
610 *blood pressure dipping with abnormalities of cardiac structure: the Coronary*
611 *Artery Risk Development in Young Adults study.* J Hypertens, 2020. **38**(1): p.
612 102-110.
- 613 56. Henskens, L.H., et al., *Subjective sleep disturbance increases the nocturnal*
614 *blood pressure level and attenuates the correlation with target-organ damage.*
615 J Hypertens, 2011. **29**(2): p. 242-50.
616

617 Tables

618 Table 1. Measures of blood pressure and cardiac structure for participants included in the analysis, N=587

Variable	Combined mean (SD) or frequency (%) N=587	Mean (SD) or frequency (%) in males N=253	Mean (SD) or frequency (%) in females N=334	P value for sex difference
<i>Systolic Blood Pressure</i>				
Clinic SBP (mmHg)	114.5 (9.7)	119.7 (8.9)	110.5 (8.3)	<0.001
24h average SBP (mmHg)	118.3 (8.6)	121.4 (7.7)	115.9 (8.4)	<0.001
Daytime average SBP (mmHg)	124.8 (9.2)	128.3 (8.5)	122.1 (8.8)	<0.001
Night time average SBP (mmHg)	107.4 (9.2)	109.8 (8.9)	105.6 (9.0)	0.001
SDdn SBP (mmHg)	10.2 (2.1)	10.6 (2.1)	9.9 (2.1)	<0.001
VIM of SBP (mmHg)	10.2 (2.0)	10.3 (1.9)	10.1 (1.7)	P=0.14
ARV of SBP (mmHg)	10.5 (2.5)	10.9 (2.5)	10.1 (2.5)	<0.001
Systolic dipping (%)	13.8 (5.7)	14.4 (5.8)	13.4 (5.5)	0.05

Binary systolic dipping:				0.20*
- Dippers (>10%)	456 (77.7 %)	203 (80.2%)	253 (75.8 %)	
- Non-dippers (\leq 10%)	131 (22.3 %)	50 (19.8 %)	81 (24.3 %)	
Categorical systolic dipping:				0.11
- Normal dippers (>10%, \leq 20%)	216 (64.7%)	160 (63.2 %)	216 (64.7 %)	
- Non-dippers (0-10%)	78 (23.4%)	46 (18.2 %)	78 (23.4 %)	
- Extreme dippers (>20%)	37 (11.1%)	43 (17.1 %)	37 (11.1 %)	
- Risers (<0%)	3 (0.9%)	4 (1.7 %)	3 (0.9 %)	
Diastolic Blood Pressure				
Clinic DBP (mmHg)	64.5 (5.8)	63.3 (5.3)	65.4 (6.1)	<0.001
24h mean DBP (mmHg)	67.9 (5.2)	67.5 (5.1)	68.1 (5.3)	0.15
Daytime average DBP (mmHg)	73.5 (5.9)	73.1 (5.9)	73.9 (5.9)	0.13
Night time average DBP (mmHg)	58.3 (5.5)	57.9 (5.3)	58.7 (5.6)	0.07
SDdn DBP (mmHg)	8.4 (1.8)	8.7 (1.9)	8.2 (1.7)	0.001
VIM of DBP (mmHg)	8.4 (1.8)	8.8 (1.9)	8.1 (1.7)	<0.001

ARV of DBP (mmHg)	8.8 (2.0)	9.1 (2.1)	8.6 (1.9)	0.005
Diastolic dipping (%)	20.5 (6.9)	20.7 (6.8)	20.4 (7.0)	0.59
Binary diastolic dipping:				0.99*
- Dippers (>10%)	550 (93.7 %)	237 (93.7 %)	313 (93.7 %)	
- Non-dippers (≤10%)	37 (6.3 %)	16 (6.3 %)	21 (6.3 %)	
Categorical diastolic dipping:				0.91
- Normal dippers (>10%, ≤20%)	218 (37.1 %)	91 (36.0 %)	127 (38.2 %)	
- Non-dippers (0-10%)	31 (5.3 %)	14 (5.5 %)	17 (5.1 %)	
- Extreme dippers (>20%)	332 (56.6 %)	146 (57.7 %)	186 (55.7 %)	
- Risers (<0%)	6 (1.0 %)	2 (0.8 %)	4 (1.2 %)	
Cardiac structure measures				
LVMi (g/m ^{2.7})	27.7 (5.9)	29.3 (6.2)	26.5 (5.4)	<0.001
LADi (cm/m)	1.88 (0.22)	1.87 (0.23)	1.88 (0.22)	0.42
LVIDD (cm)	4.52 (0.44)	4.76 (0.41)	4.33 (0.36)	<0.001
RWT	0.37 (0.06)	0.37 (0.05)	0.37 (0.06)	0.92

619 * = using Pearson's Chi-Squared test for the categorical dipping variable; SBP = systolic blood pressure, SDdn = standard deviation
620 weighted for day and night, ARV = average real variability, VIM = variability independent of the mean, DBP = diastolic blood pressure,
621 $LVMi^{2.7}$ = left ventricular mass indexed to height^{2.7}, LADi = left atrial diameter indexed to height, LVIDD = left ventricular internal
622 diameter during diastole, RWT = relative wall thickness.

623

624

625 **Table 2. Associations of blood pressure measurements with cardiac structure, N=587**

626 Analysis of multiply imputed data. Adjusted for sex, age at outcome assessment; maternal age at delivery, education, parity, and
 627 maternal pre-pregnancy BMI; household social class; smoking at age 17; minutes of moderate to vigorous physical activity at age
 628 15; DXA-determined fat mass, height and height² at age 17. Regression coefficients for continuous exposures are standardised, i.e.
 629 they represent the change in SDs of the outcome (cardiac structure measurement) per one SD higher blood pressure.

Exposure	Mean difference in cardiac structure measures (SDs) per SD higher BP: β , 95% confidence interval, P value			
	LVMi	LADi	LVIDD	RWT
SBP	0.23 (0.15 to 0.32) P=1.6x10 ⁻⁷	0.055 (-0.039 to 0.15) P=0.25	-0.0043 (-0.085 to 0.077) P=0.92	0.29 (0.19 to 0.39) P=1.2x10 ⁻⁸
24h mean SBP	0.17 (0.093 to 0.25) P=1.8x10 ⁻⁵	-0.006 (-0.088 to 0.076) P=0.89	0.016 (-0.056 to 0.087) P=0.67	0.18 (0.089 to 0.26) P=8.1x10 ⁻⁵
Daytime mean SBP	0.17	0.018	0.026	0.16

	(0.097 to 0.25) P=1.2x10 ⁻⁵	(-0.065 to 0.10) P=0.68	(-0.046 to 0.098) P=0.48	(0.073 to 0.25) P=3.5x10 ⁻⁴
Night-time mean SBP	0.12 (0.042 to 0.19) P=2.3x10 ⁻³	-0.016 (-0.096 to 0.064) P=0.70	-0.025 (-0.095 to 0.044) P=0.48	0.18 (0.10 to 0.27) P=2.2x10 ⁻⁵
SDdn SBP	0.073 (-0.003 to 0.15) P=0.060	P=0.019 (-0.060 to 0.098) P=0.63	-0.019 (-0.088 to 0.050) P=0.59	0.15 (0.061 to 0.23) P=7.9x10 ⁻⁴
VIM of SBP	0.018 (-0.058 to 0.093) P=0.65	0.031 (-0.047 to 0.11) P=0.44	-0.022 (-0.091 to 0.047) P=0.53	0.087 (0.002 to 0.17) P=0.046
ARV of SBP	0.091 (0.016 to 0.17) P=0.017	0.067 (-0.012 to 0.14) P=0.096	0.010 (-0.058 to 0.078) P=0.77	0.12 (0.039 to 0.21) P=4.3x10 ⁻³

Systolic dipping (continuous)	0.033 (-0.043 to 0.11) P=0.39	0.038 (-0.042 to 0.12) P=0.35	0.060 (-0.010 to 0.13) P=0.09	-0.069 (-0.15 to 0.017) P=0.12
Binary systolic dipping (non-dippers versus dippers)	-0.10 (-0.28 to 0.080) P=0.28	-0.073 (-0.26 to 0.12) P=0.45	-0.039 (-0.20 to 0.13) P=0.64	-0.0005 (-0.20 to 0.20) P=0.99
DBP	0.034 (-0.046 to 0.11) P=0.41	-0.10 (-0.19 to -0.015) P=0.021	-0.13 (-0.20 to -0.055) P=5.7x10 ⁻⁴	0.24 (0.15 to 0.33) P=1.4x10 ⁻⁷
24h mean DBP	0.050 (-0.024 to 0.12) P=0.18	-0.075 (-0.15 to 0.0006) P=0.052	-0.055 (-0.12 to 0.013) P=0.11	0.13 (0.045 to 0.21) P=2.6x10 ⁻³
Daytime mean DBP	0.059 (-0.015 to 0.1) P=0.12	-0.046 (-0.12 to 0.032) P=0.24	-0.053 (-0.12 to 0.015) P=0.12	0.14 (0.052 to 0.22) P=1.5x10 ⁻³

Night-time mean DBP	0.021 (-0.053 to 0.094) P=0.58	-0.081 (-0.16 to -0.003) P=0.042	-0.074 (-0.14 to -0.007) P=0.03	0.13 (0.044 to 0.21) P=2.8x10 ⁻³
SDdn DBP	0.073 (-0.002 to 0.15) P=0.056	0.064 (-0.014 to 0.14) P=0.11	-0.022 (-0.090 to 0.047) P=0.54	0.15 (0.062 to 0.23) P=7.2x10 ⁻⁴
VIM of DBP	0.064 (-0.012 to 0.14) P=0.098	0.10 (0.025 to 0.18) P=9.8x10 ⁻³	0.010 (-0.060 to 0.080) P=0.77	0.090 (0.0045 to 0.18) P=0.039
ARV of DBP	0.083 (0.008 to 0.16) P=0.030	0.11 (0.036 to 0.19) P=4.3x10 ⁻³	-0.009 (-0.078 to 0.060) P=0.80	0.13 (0.045 to 0.21) P=2.7x10 ⁻³
Diastolic dipping (continuous)	0.032 (-0.043 to 0.11) P=0.40	0.047 (-0.031 to 0.13) P=0.24	0.032 (-0.037 to 0.10) P=0.36	-0.014 (-0.10 to 0.071) P=0.74

Binary diastolic dipping (non-dippers versus dippers)	-0.22 (-0.52 to 0.084) P=0.16	-0.21 (-0.52 to 0.11) P=0.20	-0.15 (-0.43 to 0.13) P=0.28	-0.037 (-0.38 to 0.31) P=0.83
-------------------------------------------------------------	-------------------------------------	------------------------------------	------------------------------------	-------------------------------------

630

631 LVMi = left ventricular mass indexed to height^{2.7}, LADi = left atrial diameter indexed to height, LVIDD = left ventricular internal diameter

632 during diastole, RWT = relative wall thickness. SBP = systolic blood pressure, SDdn = standard deviation weighted for day and night,

633 VIM = variability independent of the mean, ARV = average real variability, DBP = diastolic blood pressure,

634

635 **Table 3. Associations of BP variability and dipping with cardiac structure after adjustment for 24-hour mean BP, N=587**

636 Analysis of multiply imputed data. Adjusted for sex, age at outcome assessment; maternal age at delivery, education, parity, and
 637 maternal pre-pregnancy BMI; household social class; smoking at age 17; minutes of moderate to vigorous physical activity at age
 638 15; DXA-determined fat mass, height and height² at age 17; mean 24-hour blood pressure (systolic or diastolic, as appropriate for
 639 the exposure). Regression coefficients are standardised, i.e. they represent the change in SDs of the outcome (cardiac structure
 640 measurement) per one SD higher blood pressure.

Exposure	Mean difference in cardiac structure measures (SDs) per SD higher BP: β , 95% confidence interval, P value			
	LVMi	LADi	LVIDD	RWT
SDdn SBP	0.020 (-0.059 to 0.099) P=0.62	0.024 (-0.060 to 0.11) P=0.58	-0.027 (-0.10 to 0.046) P=0.47	0.10 (0.011 to 0.19) P=0.028
VIM of SBP	0.020 (-0.054 to 0.094) P=0.59	0.031 (-0.048 to 0.11) P=0.44	-0.022 (-0.091 to 0.047) P=0.53	0.090 (0.0054 to 0.17) P=0.037

ARV of SBP	0.044 (-0.034 to 0.12) P=0.27	0.076 (-0.0065 to 0.16) P=0.071	0.0060 (-0.066 to 0.078) P=0.87	0.077 (-0.011 to 0.17) P=0.085
Systolic dipping (continuous)	0.044 (-0.031 to 0.12) P=0.35	0.038 (-0.042 to 0.12) P=0.35	0.061 (-0.009 to 0.13) P=0.086	-0.057 (-0.14 to 0.028) P=0.19
Binary systolic dipping (non-dippers versus dippers)	-0.14 (-0.31 to 0.041) P=0.13	-0.072 (-0.26 to 0.12) P=0.45	-0.043 (-0.21 to 0.12) P=0.61	-0.039 (-0.24 to 0.16) P=0.71
SDdn DBP	0.066 (-0.01 to 0.14) P=0.089	0.081 (0.0013 to 0.16) P=0.046	-0.012 (-0.082 to 0.058) P=0.74	0.13 (0.41 to 0.21) P=3.7x10 ⁻³
VIM of DBP	0.076 (-0.0007 to 0.15) P=0.052	0.093 (0.012 to 0.17) P=0.024	-0.0002 (-0.071 to 0.070) P=0.99	0.12 (0.033 to 0.20) P=6.9x10 ⁻³

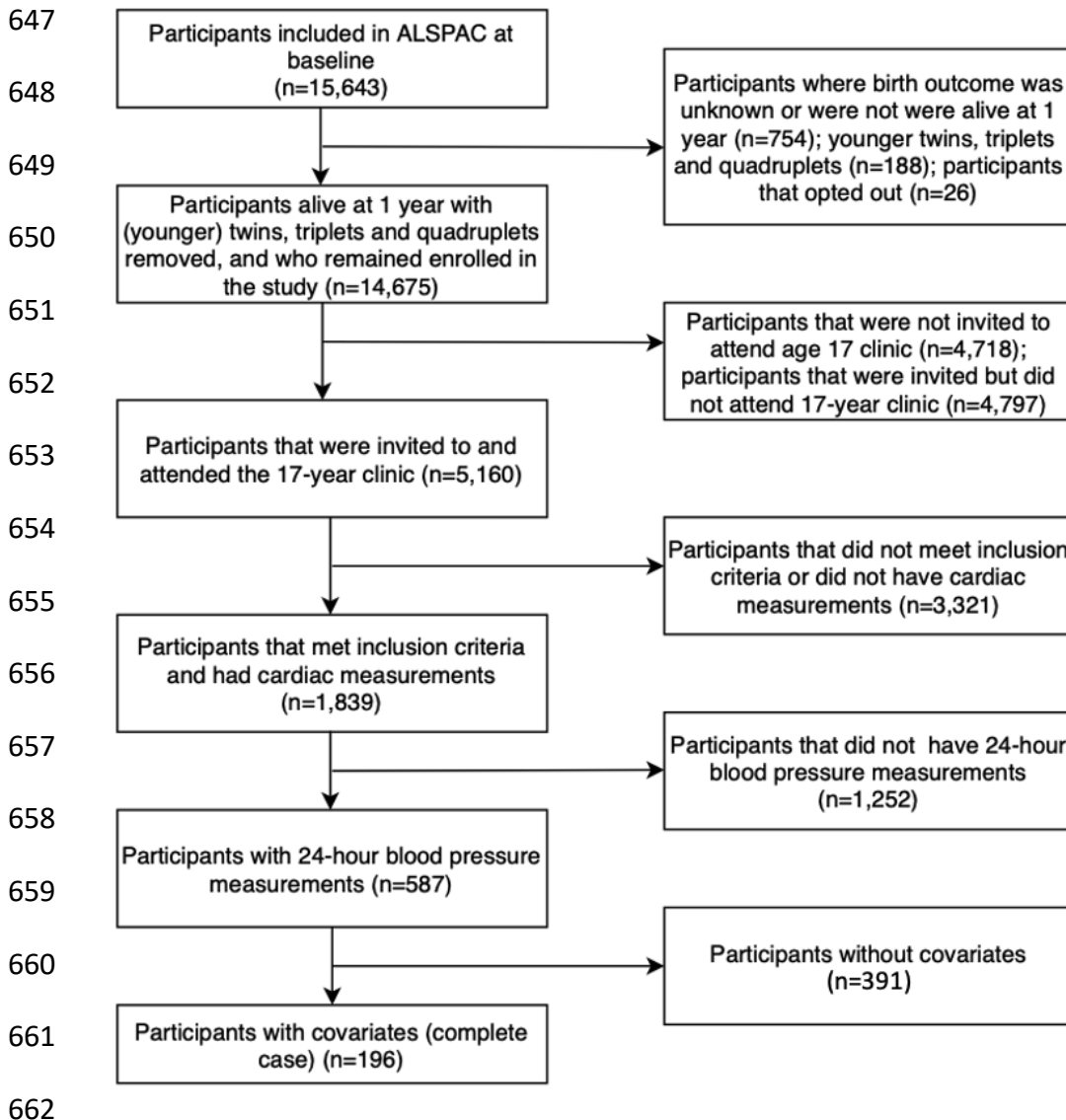
ARV of DBP	0.076 (-0.0007 to 0.15) P=0.052	0.14 (0.055 to 0.21) P=9.2x10 ⁻⁴	0.0021 (-0.068 to 0.072) P=0.95	0.11 (0.022 to 0.19) P=0.014
Diastolic dipping (continuous)	0.031 (-0.044 to 0.11) P=0.42	0.050 (-0.028 to 0.13) P=0.21	0.034 (-0.034 to 0.10) P=0.33	-0.020 (-0.10 to 0.065) P=0.65
Binary diastolic dipping (non-dippers versus dippers)	-0.24 (-0.54 to 0.068) P=0.13	-0.18 (-0.50 to 0.13) P=0.25	-0.14 (-0.4 to 0.14) P=0.33	-0.076 (-0.42 to 0.27) P=0.66

641

642 LVMi = left ventricular mass indexed to height^{2.7}, LADi = left atrial diameter indexed to height, LVIDD = left ventricular internal diameter
643 during diastole, RWT = relative wall thickness. SBP = systolic blood pressure, DBP = diastolic blood pressure, SDdn = standard
644 deviation weighted for day and night, VIM = variability independent of the mean, ARV = average real variability

645 **Figures**

646 **Figure 1**



663 Figure 1: a STROBE diagram detailing how the study cohort was selected from the
664 baseline Avon Longitudinal Study of Parents And Children (ALSPAC) participants.

665

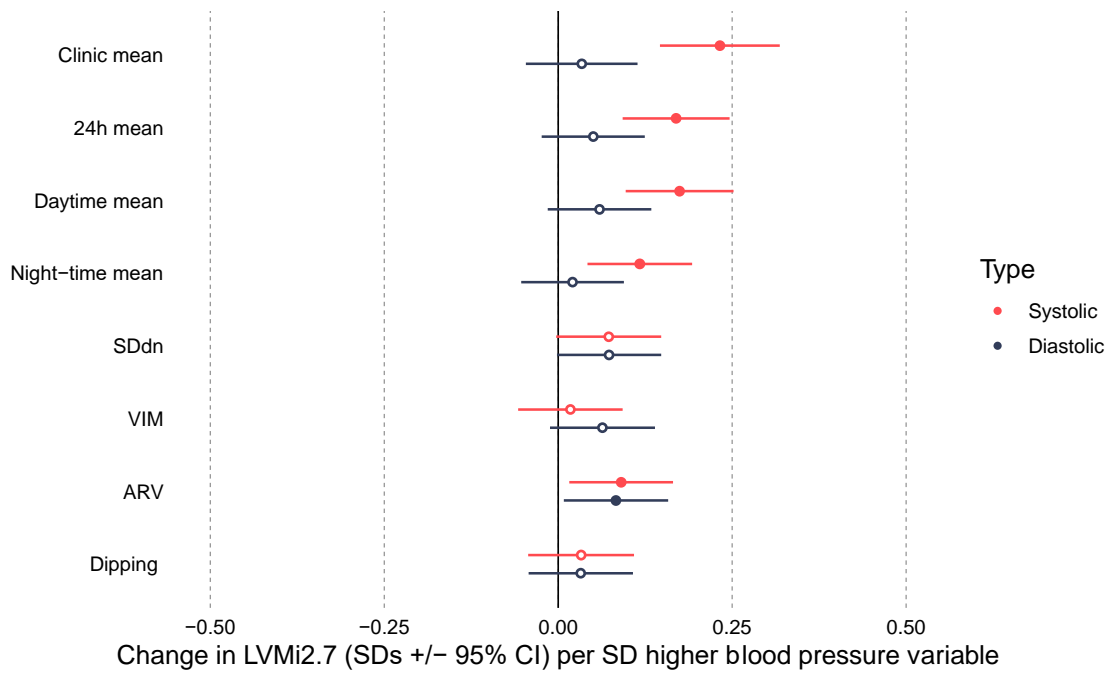
666

667

668

669

670 **Figure 2**



671

672 Figure 2: Forest plot of the mean difference in left ventricular mass indexed to height^{2.7}

673 (LVMI^{2.7} in SDs +/- 95% confidence interval) per SD higher blood pressure (BP)

674 variable in the confounder model. SDdn = Standard deviation weighted for day and

675 night, VIM = variability independent of the mean, ARV = average real variability.

676