

# 1 **Quantifying the potential value of antigen-detection rapid diagnostic tests for COVID-19:** 2 **a modelling analysis**

3  
4 Saskia Ricks\*<sup>1</sup>, Emily A. Kendall<sup>2</sup>, David W. Dowdy<sup>3</sup>, Jilian A. Sacks<sup>4</sup>, Samuel G. Schumacher<sup>4</sup>,  
5 Nimalan Arinaminpathy<sup>1</sup>

6  
7 <sup>1</sup> MRC Centre for Global Infectious Disease Analysis, Imperial College London, UK

8 <sup>2</sup> Division of Infectious Diseases, Johns Hopkins University School of Medicine, Baltimore, MD,  
9 USA

10 <sup>3</sup> Department of Epidemiology, The Johns Hopkins Bloomberg School of Public Health,  
11 Baltimore, MD, USA

12 <sup>4</sup> Foundation for Innovative New Diagnostics, Geneva, Switzerland

13  
14 \* Corresponding author: [saskia.ricks12@imperial.ac.uk](mailto:saskia.ricks12@imperial.ac.uk)

## 15 16 **Abstract**

17  
18 **Background:** Testing plays a critical role in treatment and prevention responses to the COVID-  
19 19 pandemic. Compared to nucleic acid tests (NATs), antigen-detection rapid diagnostic tests  
20 (Ag-RDTs) can be more accessible, but typically have lower sensitivity and specificity. By  
21 quantifying these trade-offs, we aimed to inform decisions about when an Ag-RDT would offer  
22 greater public health value than reliance on NAT.

23  
24 **Methods:** Following an expert consultation, we selected two use cases for analysis: rapid  
25 identification of people with COVID-19 amongst patients admitted with respiratory symptoms in  
26 a 'hospital' setting; and early identification and isolation of people with mildly symptomatic  
27 COVID-19 in a 'community' setting. Using decision analysis, we evaluated the cost and impact  
28 (deaths averted and infectious days isolated) of an Ag-RDT-led strategy, compared to a strategy  
29 based on NAT and clinical judgment. We performed a multivariate sensitivity analysis to identify  
30 key parameters.

31  
32 **Results:** In a hospital setting, an Ag-RDT-led strategy would avert more deaths than a NAT-  
33 based strategy, and at lower cost per death averted, when the sensitivity of clinical judgement is  
34 less than 85%, and when NAT results are available in time to inform clinical decision-making for  
35 less than 90% of patients. The use of an Ag-RDT is robustly supported in community settings,  
36 where it would avert more transmission at lower cost than relying on NAT alone, under a wide  
37 range of assumptions.

38  
39 **Conclusions:** Despite their imperfect sensitivity and specificity, Ag-RDTs have the potential to  
40 be simultaneously more impactful, and cost-effective, than current approaches to COVID-19  
41 diagnostic testing.

42

## 1 **Introduction**

2

3 Virological testing is a critical part of the global response to SARS-CoV-2(1–3). Early diagnosis  
4 allows infectious cases to be isolated in a timely manner, thus minimising opportunities for  
5 transmission. Amongst those at risk of severe outcomes of the disease, early diagnosis and  
6 initiation of appropriate therapy can substantially improve outcomes and avert mortality (4–7).  
7 Nucleic acid tests (NATs) have been widely implemented in well-resourced settings since the  
8 outset of the pandemic and have the benefit of high sensitivity and specificity for current or  
9 recent infection. However, these tests are challenging to implement at scale, particularly in  
10 resource-poor settings: they are costly and require good specimen transport systems, laboratory  
11 infrastructure, and highly trained technicians. Delays of a week or more in obtaining results after  
12 collecting specimens are therefore common (8–10), and in such cases a NAT result adds little  
13 value to decisions around isolation or clinical management.

14

15 The emergence of antigen-detection rapid diagnostic tests (Ag-RDTs) may help to address  
16 some of these challenges. The WHO have recently published Target Product Profiles for such  
17 tests (11), which detect SARS-CoV-2 proteins (antigens) to diagnose active infection. Ag-RDTs  
18 can be conducted relatively easily, at low cost, and within minutes, at the point of care without  
19 need for a laboratory. However, they have lower sensitivity and specificity and may miss SARS-  
20 CoV-2 in specimens with lower quantities of virus. For example, available Ag-RDTs were  
21 estimated to have less than 80% sensitivity for COVID-19, compared with >90% for NAT (12).  
22 We therefore sought to quantify these trade-offs between Ag-RDT-based testing and NAT-  
23 based testing in the context of resource-limited settings.

24

## 25 **Methods**

26

### 27 ***Overview***

28

29 Our primary objective was to identify scenarios in which an Ag-RDT might offer greater  
30 individual and public health value at lower cost than reliance on NAT. To accomplish this, we  
31 first defined key use cases and plausible ranges for parameter values in consultation with a  
32 group of experts deeply involved in their country's response to COVID-19. We then constructed  
33 decision trees that included both costs and relevant outcomes (deaths and infectious person-  
34 days averted). Finally, we simulated overall costs and outcomes under a wide array of  
35 parameter values and compared testing strategies using Ag-RDTs, those using NAT where  
36 available. We also constructed a user-friendly online tool ([https://covid-ag-  
37 rdt.shinyapps.io/model/](https://covid-ag-rdt.shinyapps.io/model/)) that enables public health practitioners to examine model outputs for  
38 input parameter values relevant to their own settings.

39

## 1 *Model scenarios and structure*

2

3 We denote an 'Ag-RDT-led strategy' as any testing strategy in which an Ag-RDT is the first  
4 diagnostic test performed (with the potential for follow-up NAT confirmation). As an illustrative  
5 example, we focused on an Ag-RDT with sensitivity and specificity of 80% and 98% respectively  
6 and costing 5 US\$ per test, consistent with recent WHO interim guidance and US FDA  
7 emergency use authorized antigen-detection tests (13,14). We compared the impact of using an  
8 Ag-RDT-led strategy to that of a 'NAT-based strategy' in which NAT was the only virological test  
9 performed, with reliance on clinical judgment where sufficiently rapid NAT results were not  
10 available (see Fig. 1 for a summary of the diagnostic strategies modelled). To inform relevant  
11 use case scenarios, we consulted experts from India, South Africa, Nigeria and Brazil to elicit  
12 expert opinion on the ways in which Ag-RDTs could offer value in their own country settings  
13 (see supporting information for further details). Based on this input, we selected two use case  
14 scenarios, as listed in Table 1: (i) A 'hospital setting', where the test is used to support infection  
15 control and treatment decisions amongst patients being admitted to hospital with respiratory  
16 symptoms, and (ii) a 'community' setting, where the test is used in decentralized community  
17 clinics to identify cases of COVID-19 who should self-isolate. Although Ag-RDTs could also be  
18 considered for use in identifying asymptomatic infections, both of these focal scenarios involved  
19 testing of only symptomatic individuals.

20

21 For both use cases we constructed decision trees (Figure 1) that represent the diagnostic use of  
22 the Ag-RDT, actions taken in response to the test results (or lack of results), and resulting  
23 outcomes. For simplicity and transparency, this model does not incorporate transmission  
24 dynamics but approximates epidemiological benefits based on the incremental change in the  
25 number of days that infectious individuals spend out of isolation; the magnitude of downstream  
26 impact would depend on factors, such as the rate of epidemic growth and the contact patterns  
27 of symptomatic versus pre- or asymptomatic cases, that are not specified in our model. Our  
28 focus is therefore on the direct benefits that would accrue to patients receiving the test and, by  
29 extension, their immediate contacts (see right-hand column of Table 1).

30

31 Model parameters, listed in Table 2, represent the contextual factors to be examined (including  
32 plausible ranges for each), with the aim of identifying those factors that are most influential for  
33 the value of an Ag-RDT-led testing strategy relative to NAT-based testing. Our expert  
34 consultation highlighted that no standard guidance for whether or how Ag-RDTs should be used  
35 in conjunction with NAT existed at the time (e.g. whether NAT should be used to confirm an Ag-  
36 RDT negative result). Thus, we also defined and modelled three different options for the  
37 adjunctive use of NAT in an Ag-RDT-led algorithm: (i) no confirmation of Ag-RDT results; (ii)  
38 NAT confirmation of Ag-RDT negative results; or (iii) NAT confirmation of Ag-RDT positive  
39 results).

1  
2 It is also necessary to specify scenarios for interim management of patients while awaiting a  
3 NAT result (whether in the NAT-based strategy or while awaiting NAT confirmation in an Ag-  
4 RDT-led strategy). In the hospital setting, we assumed that: (i) all patients are isolated while  
5 awaiting a NAT result, and (ii) those thought to need treatment are initiated on treatment during  
6 this time: in the supporting information we also present sensitivity analysis, to the alternative  
7 scenario where there is no isolation, nor treatment pending NAT results. By contrast, in the  
8 community setting we assumed that individuals are *not* isolated while awaiting any NAT result,  
9 as this policy was considered infeasible due to the comparatively low prevalence of COVID-19  
10 in this population, and the unnecessary expense and disruption this would entail to most tested  
11 individuals and their families.

12  
13 Although NAT specificity is near 100% for current or recent infection (15), not all NAT-positive  
14 cases are necessarily infectious, given the potential to detect unviable viral genetic material  
15 after the infection has resolved (15–17) and for severe symptoms to develop near the end of the  
16 infectious period (18). By contrast, Ag-RDTs may detect only acute, but not recently cleared,  
17 infection (19,20). These distinctions have significance for the intended purpose of the test:  
18 where the purpose is to guide clinical decisions for treatment, knowing the aetiology of severe  
19 symptoms is important, regardless of viral antigenic load. On the other hand, where the purpose  
20 is early identification of infectious cases, detecting recently-cleared infection can detract from  
21 the utility of a test. We captured these elements of both NATs and Ag-RDTs by distinguishing  
22 ‘acute’ from ‘recent’ infection, and assuming that: (i) only acute infection is infectious; (ii) NAT is  
23 able to detect both acute and recent infection with equal sensitivity, and (iii) an Ag-RDT is able  
24 to detect only acute infection (19). As discussed below, although these are useful simplifications  
25 for the purpose of the current analysis, these categorisations conceal potentially important  
26 complexities relating to temporal and between-individual variation in viral load, infectivity and  
27 detectability by a given test. In the present analysis we incorporated a parameter for the  
28 proportion of those with COVID-19, amongst the population being tested, that are still in the  
29 acute phase at the point of testing, allowing this parameter to occupy a wide range of values  
30 between 50% and 100%, acknowledging the existing uncertainty (See Table 2).

31  
32 *Quantifying relative value*

33  
34 To estimate the impact of a test on deaths in a hospital setting, we assumed that a certain  
35 proportion of admitted patients would die without treatment. We assumed that early treatment of  
36 these individuals would reduce mortality by 5 – 50% (Table 2), consistent with recent study  
37 results for corticosteroid treatment of COVID-19 (7). We assumed further that individuals with  
38 severe disease would be eligible for treatment while awaiting a test result, as well as once  
39 confirmed as having COVID-19. We thus denoted ‘deaths averted’ as the reduction in deaths

1 that would be achieved by a given testing strategy, relative to no intervention. Similarly, as a  
2 simple proxy for the impact of a test on transmission, we first assumed a uniform distribution for  
3 the number of infectious days remaining per patient amongst patients presenting with acute  
4 infection (Table 2). We then recorded the number of patient-days of acute infection that were  
5 not spent in isolation, whether because of missed diagnosis or (in the case of NAT) delayed  
6 diagnosis without isolation, while awaiting a test result. We denoted ‘infectious person-days  
7 averted’ as the reduction that would be achieved by a given testing strategy, relative to no  
8 intervention.

9  
10 Using the model illustrated in Figure 1, we estimated the impact (deaths or infectious days  
11 averted) and cost of each testing strategy. We stratified Ag-RDT-led strategies by the adjunctive  
12 role of NAT in confirmation of a test result (i.e. whether to confirm Ag-RDT-negatives, Ag-RDT-  
13 positives, or not at all). For NAT-based strategies, we assumed that only a proportion of eligible  
14 individuals receive a NAT result (assuming a broad range of 10-100%), with the remainder  
15 managed through clinical judgment alone. For each use case, we sampled all parameters from  
16 the uncertainty ranges in Table 2 using Latin Hypercube Sampling. For each sampled set of  
17 parameters, we calculated both incremental costs and the incremental primary outcome (deaths  
18 averted or infectious person-days that were isolated) under an Ag-RDT-led strategy or a NAT-  
19 based strategy, relative to no intervention (that is, a scenario of no testing, nor clinical  
20 management of COVID-19). To quantify uncertainty, we calculated uncertainty intervals (UIs) as  
21 2.5<sup>th</sup> and 97.5<sup>th</sup> percentiles over 10,000 samples, and reported median values as point  
22 estimates.

23  
24 To compare testing strategies, we first estimated the cost-per-death averted (in the hospital  
25 setting), and the cost-per-infectious person day isolated (in both hospital and community  
26 settings) under NAT-based and Ag-RDT-led strategies. However, we did not aim to determine  
27 whether or not an Ag-RDT would be cost-effective, given the uncertainties surrounding  
28 appropriate willingness-to-pay thresholds for emergency outbreak response (21). Instead, we  
29 compared the two strategies (Ag-RDT vs NAT) using a simple approach of plotting their relative  
30 impact against their relative cost for each sampled set of parameters (see Figure S1 for a  
31 schematic illustration of the approach). It is important to note that this approach is distinct from a  
32 conventional cost-effectiveness plane, as the axes are shown on a relative, rather than a  
33 nominal, scale. In the example of deaths, we denoted  $A_{RDT}$  as the deaths averted by Ag-RDT-  
34 led testing, relative to no intervention, and likewise for  $A_{NAT}$ . Similarly, we calculated the  
35 incremental cost  $C_{RDT}$  of an Ag-RDT-led strategy relative to no intervention, and likewise for  
36  $C_{NAT}$ . We then plotted the relative impact ( $A_{RDT}/A_{NAT}$ ) against the relative incremental cost  
37 ( $C_{RDT}/C_{NAT}$ ).

38

1 We defined an Ag-RDT as being ‘favourable’ relative to NAT, wherever its use results  
2 simultaneously in more deaths averted than NAT (i.e.  $A_{RDT} > A_{NAT}$ ), and a lower incurred cost  
3 per death averted than NAT (i.e.  $C_{RDT}/A_{RDT} < C_{NAT}/A_{NAT}$ ). We defined an Ag-RDT as being  
4 ‘non-favourable’ otherwise. We performed corresponding calculations for the outcome of  
5 infectious person-days successfully isolated. Our focus in the following analysis is on identifying  
6 which circumstances would lead to an Ag-RDT being ‘favourable’ relative to NAT.

7  
8 Where simulation outputs were equivocal on the favourability of Ag-RDTs, i.e. straddling  
9 favourable and non-favourable regions, we evaluated the correlation between each parameter  
10 and relevant model outputs using partial rank correlation coefficients, to identify those  
11 parameters that were most influential on the probability of a simulation falling in a favourable  
12 region. In particular, where simulation outputs straddled the vertical dashed line shown in  
13 Fig.S1, we evaluated correlations against the relative impact of Ag-RDT-led vs NAT-based  
14 testing strategies. Where simulations straddled the diagonal line in the upper-right quadrant, we  
15 evaluated correlations against the relative cost-per-unit impact (i.e. per death averted or per  
16 infectious person-day isolated). Overall, in this way we sought to identify the contextual  
17 conditions under which an Ag-RDT-led strategy would, and would not, be favoured over NAT.

#### 18 *Role of the funding source*

19 This work was funded by the Foundation for Innovative New Diagnostics (FIND), through a  
20 grant from the World Health Organization (WHO). Authors JS and SS are employees of FIND.  
21 Otherwise, neither FIND nor WHO had no role in the study design, analysis or interpretation.  
22

## 23 **Results**

24  
25  
26 Table S2 shows estimates of incremental cost-effectiveness ratios (relative to a scenario of no  
27 intervention), illustrating, for example, that – relative to no intervention – a NAT based algorithm  
28 in a hospital setting would cost \$119,830 (95% uncertainty intervals (UI) 32,080 – 491,070) per  
29 death averted within the patient population, while an Ag-RDT-led algorithm, involving NAT  
30 confirmation of Ag-RDT-negatives, would cost \$113,130 (29,470 – 451,600). Likewise, in a  
31 community setting, a NAT based algorithm would cost \$732 (179 – 2,541) per infectious person-  
32 day isolated, while an Ag-RDT-only algorithm (without NAT confirmation) would cost only \$88  
33 (26 – 227) per infectious person-day isolated.

#### 34 *Hospital Setting*

35 Figure 2 shows plots of relative incremental cost against relative impact in terms of deaths  
36 averted in a hospital setting, with an assumed 25% prevalence of acute or recent COVID-19  
37 amongst those being tested. For deaths averted, when an Ag-RDT is used in conjunction with  
38 NAT to confirm Ag-RDT-negative results (blue points), such a strategy had greater impact, and  
39 at lower cost per death averted, than a NAT-based strategy (“favourable region”) in 89% of all  
40 simulations. By contrast, Ag-RDT-led strategies that either involve no NAT confirmation, or only  
41 confirmation of RDT-positive cases (respectively orange and yellow points), result in too many  
42

1 missed cases to exceed the impact of NAT-based strategies in more than 99% of simulations.  
2 For settings in which NAT is used to confirm Ag-RDT-negative results, Fig. 2B illustrates the  
3 relationship of each model parameter to the probability of a “favourable” simulation. In particular,  
4 the availability of NAT, sensitivity of clinical judgment amongst those unable to access NAT, and  
5 proportion of cases tested during the acute phase were highly influential. Fig. 2C shows the  
6 most influential parameters (NAT availability and clinical judgment) in greater detail, with points  
7 in blue showing where an Ag-RDT is favourable. Broadly, the figure illustrates that an Ag-RDT  
8 would be favourable in settings of low NAT availability and low sensitivity of clinical judgement:  
9 in indicative terms, as long as sensitivity of clinical judgement is <90%, and NAT is available to  
10 <85% of patients, the probability of Ag-RDT use being favourable is over 98%.

11  
12 Figure 3 shows similar results in the case of infectious person-days isolated in a hospital setting.  
13 Importantly, Fig.3A illustrates the potential for the sole use of Ag-RDT (without NAT  
14 confirmation) to offer higher impact at lower cost, than a NAT-based scenario (yellow points,  
15 25% of which lie in the favourable region). Fig. 3C shows a bivariate sensitivity analysis of the  
16 two most influential model parameters, demonstrating that an Ag-RDT-only strategy is likely to  
17 be favourable in terms of averting infection as long as the sensitivity of clinical judgement in the  
18 absence of NAT is <80% and the availability of NAT is <65%. Under these conditions, the  
19 probability of Ag-RDT being favourable is over 60%.

20  
21 These results assume that all patients are placed in isolation while awaiting NAT results, and  
22 that those thought to need treatment are initiated on treatment during this time. Figs. S2 and S3  
23 show corresponding results when assuming no isolation nor interim treatment pending NAT  
24 results, illustrating that the results are essentially unchanged for deaths averted (Fig. S2). For  
25 infectious patient-days isolated, a practice of isolating patients pending NAT results tends to  
26 mitigate the drawbacks of multi-day NAT turnaround times: a decision not to isolate pending  
27 results therefore reduces the impact of a NAT-based strategy, thus making an Ag-RDT-only  
28 strategy more favourable in comparison. Fig. S3 illustrates that, in such a scenario, 89% of  
29 simulations place the Ag-RDT strategy in the favourable region.

### 30 31 *Community Screening*

32 Finally, Fig.4 shows results for the community screening scenario. Key assumptions, compared  
33 to the hospital scenario, include: the sole priority is to avert infection, because mortality risk in  
34 the individuals being evaluated is low; lower prevalence of SARS-CoV-2 amongst those being  
35 tested (5%); and we assume individuals are not placed in isolation while awaiting NAT results,  
36 because of the infeasibility of doing so. Similarly to Fig.3, confirming Ag-RDT-negative cases  
37 with NAT is highly likely to avert more potential transmission than NAT alone, and at lower cost  
38 per infectious day averted (blue points, favourable in 100% of simulations). It is also possible for  
39 the sole use of Ag-RDT to be more impactful than NAT while costing less (yellow points,  
40 favourable in 99% of simulations). Fig. 4B illustrates that key drivers that would tend to increase  
41 the relative impact of Ag-RDT-only vs NAT-based strategies are: a higher proportion of  
42 individuals that are still in their acute (infectious) phase while being tested; a lower availability of

1 NAT; and a lower sensitivity of clinical judgement. Because the vast majority of simulations  
2 place the Ag-RDT in the favourable region, we do not present the bivariate sensitivity analyses  
3 that was necessary for the hospital setting scenarios (Figs. 2C, 3C).

## 4 5 **Discussion**

6  
7 The emergence of antigen-detection rapid diagnostic tests for SARS-CoV-2 has raised  
8 important questions about trade-offs between accessibility and performance. Recent models  
9 and commentaries have highlighted the potential utility of high-frequency, low-sensitivity testing  
10 of asymptomatic individuals (22), and the current analysis demonstrates that under certain  
11 circumstances, a less-sensitive but more-accessible test may be preferable for diagnosis of  
12 symptomatic COVID-19 as well. In this work we have sought to quantify these trade-offs in a  
13 systematic way, using a simple model-based approach to cast light on the situations in which an  
14 Ag-RDT, of given performance, may be favoured over NAT. Rather than aiming to specify  
15 parameter values with precision, our approach instead embraces parameter uncertainty, by  
16 modelling a broad range of scenarios or contextual factors. This approach partly reflects the  
17 uncertainty in model parameters, but also their anticipated variability across different country  
18 settings and as local epidemics change over time. By structuring our approach in this fashion,  
19 we sought to identify the contextual factors that are most important in deciding the value of an  
20 Ag-RDT.

21  
22 Our results suggest that the value of an Ag-RDT-led strategy is strongly supported for  
23 evaluating symptomatic individuals in community settings, being highly likely to be  
24 simultaneously less costly and more impactful than relying on NAT and clinical judgement (Fig.  
25 4). In hospital settings, the favourability of Ag-RDT may be subject to certain qualifications. For  
26 example, in averting deaths, an Ag-RDT, supported by NAT to confirm Ag-RDT-negative  
27 results, is likely to be favourable (averting more deaths, at less cost per death averted) to NAT  
28 and clinical judgment alone, in settings where NAT is available for less than 85% of patients,  
29 and sensitivity of clinical judgement (in the absence of NAT) is less than 90% (Fig. 2).

30  
31 We note that in the community setting in particular, any reliance on NAT-based testing would  
32 face substantial challenges in practice. For example, in most settings it is unlikely that  
33 individuals would be adequately isolated while awaiting NAT results, given the large number of  
34 unnecessary isolations, and associated burden on patients and families, that such a strategy  
35 would incur. Moreover, it will also typically be infeasible to offer timely NAT to all individuals with  
36 potential COVID-19 symptoms, given the attendant financial, human resource and supply  
37 constraints. In this setting, our analysis shows how an affordable, rapid test, even one with  
38 lower performance than NAT, can achieve greater impact overall, and at lower cost, than a  
39 strategy that relies on NAT instead.

40  
41 Notably in both hospital and community scenarios, the key determining factors for the value of  
42 an Ag-RDT (namely, the availability of NAT, sensitivity of clinical judgment, and proportion of



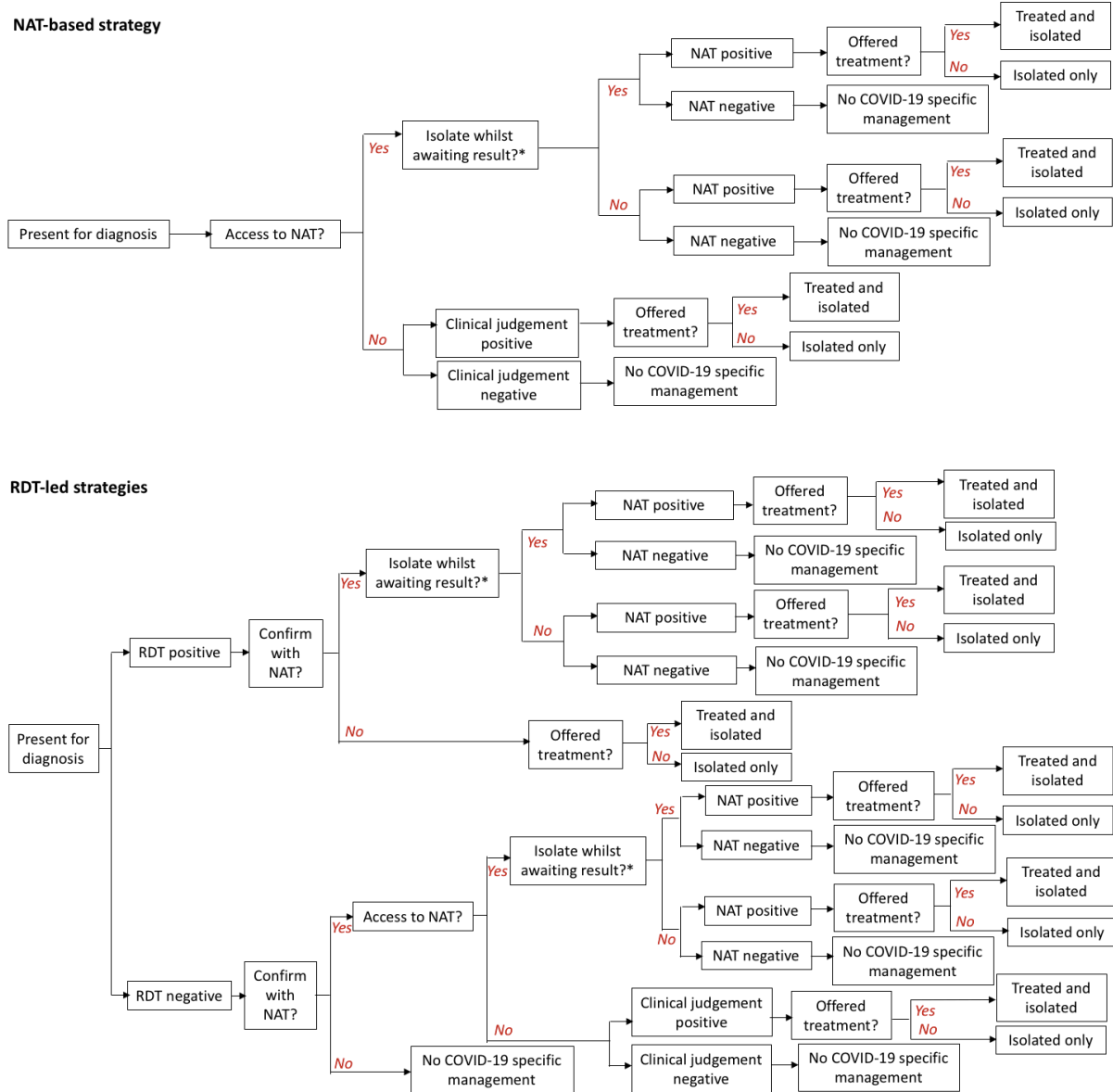
1 cases tested during the acute phase) all relate to the ability of the existing system to detect  
2 cases of SARS-CoV-2. These findings highlight the potential value of implementation studies to  
3 gather data on these factors when making programmatic decisions for the introduction and  
4 implementation of new Ag-RDTs in any given setting. Overall, this work serves broadly to  
5 illustrate an analytical framework that could be readily adjusted to local realities in different  
6 settings. A simple, user-friendly web-based tool is available, to perform the simulations shown  
7 here, but also to allow these simulations to be extended to alternative, user-specified parameter  
8 ranges (<https://covid-ag-rdt.shinyapps.io/model/>).

9  
10 Certain limitations of scope bear mention. Our focus in this work is on identifying the  
11 circumstances in which an Ag-RDT might be most valuable, given a pre-specified performance  
12 profile. Recent guidance published by WHO addresses target product profiles for Ag-RDTs: that  
13 is, how a test should best be optimised in terms of accuracy, cost and ease-of-use, for specified  
14 use cases (11). For simplicity, our approach treats transmission-related impact of testing as  
15 being directly proportional to the number of days for which testing results in isolation of an  
16 infectious person, without considering variation between individuals or over time in the degree of  
17 infectivity or the strictness of isolation. Similarly, our assessment of mortality outcomes does not  
18 account for the potential of a test to indirectly reduce incidence and mortality by interrupting  
19 transmission. Further work using dynamic models of SARS-CoV-2 transmission would be  
20 valuable in addressing this gap. In addition, while our results are based on a broad sensitivity  
21 analysis, it should be noted that these same results may depend on the range of parameters  
22 that we have assumed, and indeed these ranges may vary across different settings. Our user-  
23 friendly tool allows users to adapt some of these ranges to specific settings. Amongst other  
24 limitations, we have adopted several simplifications, perhaps most importantly assuming a  
25 dichotomy between 'acute' and 'recent' infection and the detectability of each by NAT or Ag-  
26 RDT. This assumption ignores potentially important complexities, including how infectivity varies  
27 over the clinical course; the stage in the clinical course at which individuals are likely to be  
28 tested; and the implications of changing viral/antigen/RNA load over the clinical course, for the  
29 ability of a given test to detect infection (16,23–26). Previous modelling studies have  
30 incorporated some combinations of these factors (3,22), but longitudinal data on all of these  
31 factors will be critical in refining these and other modelling approaches, to account fully for their  
32 potential interactions.

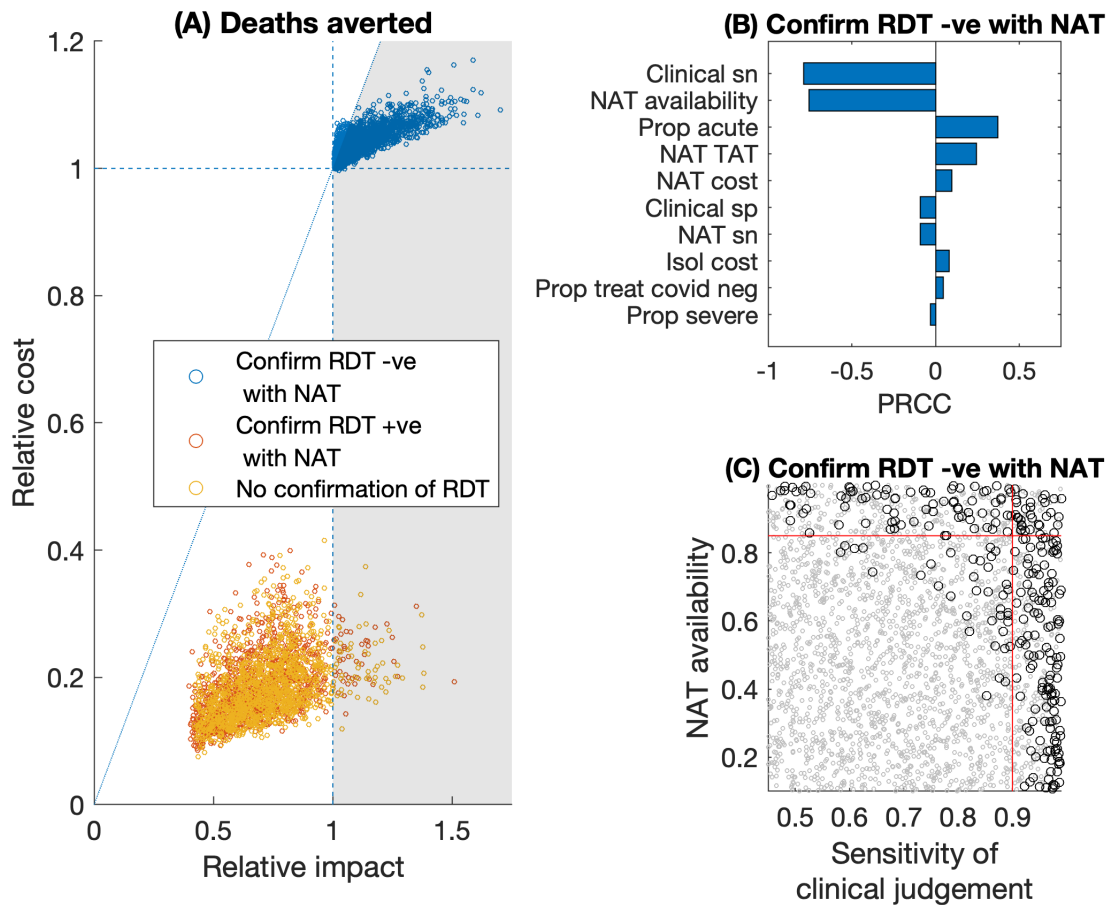
33  
34 In summary, given the immediate importance of virological testing for the control of SARS-CoV-  
35 2, it is important for decisions about testing strategy to be guided by the available evidence. Our  
36 results show how, in certain clinical conditions, the use of Ag-RDTs could achieve equal or  
37 greater impact, and at lower cost, than relying on NAT alone. While the accuracy of diagnostic  
38 tools is important, other considerations are also critical: as control efforts increasingly shift from  
39 blanket lockdowns towards intensive testing and early identification, the speed, affordability and  
40 ease-of-use of diagnostic tools are likely to play an increasingly key role in the response to  
41 SARS-CoV-2. Our findings illustrate where such rapid and affordable tests are likely to improve

1 outcomes, at more favourable cost-effectiveness ratios, than reliance on NAT and clinical  
2 judgment alone.

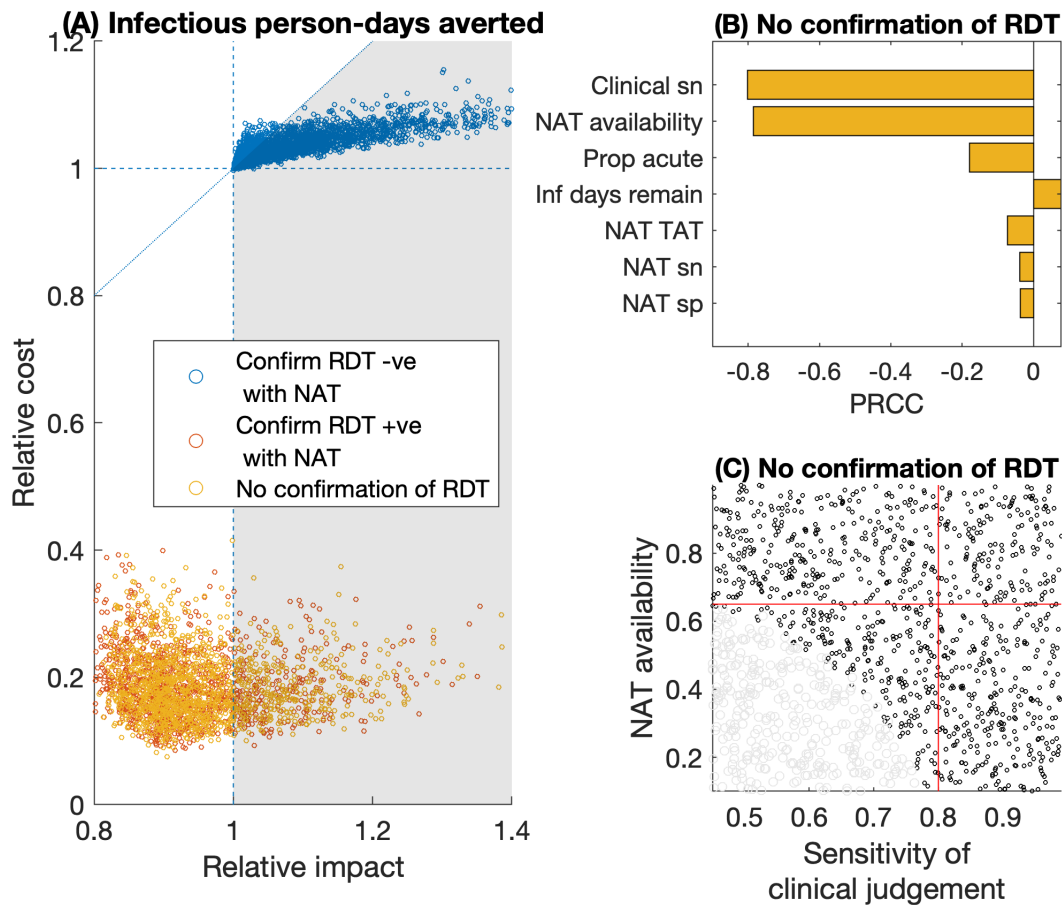
3  
4  
5  
6



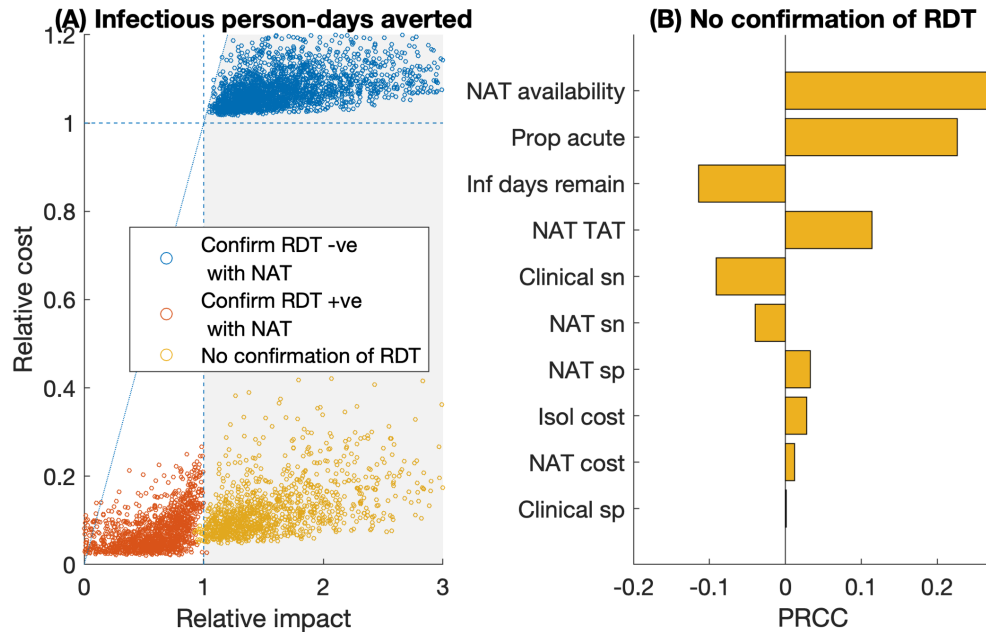
7 **Figure 1. Schematic illustration of the decision tree approach** for modelling the cost and  
8 impact of different testing strategies. As described in the main text, our analysis focuses on the  
9 direct benefit to patients being tested in different settings. \*In addition to isolating whilst awaiting  
10 a NAT result, patients with severe SARS-CoV-2 are also started on treatment. Costs and  
11 deaths/infectious days averted are accumulated along each branch of the diagram as  
12 appropriate (for example, counting the costs of interim treatment and isolation along any branch  
13 labelled 'Yes' following 'Isolate whilst awaiting treatment?').



1  
2  
3 **Figure 2. Relative value of Ag-RDT vs NAT testing, for averting deaths in a hospital**  
4 **setting. (A)** scatter plots for the relative impact of Ag-RDT vs NAT (horizontal axis), vs the  
5 relative cost of the two strategies (vertical axis). Each dot represents a single simulation with  
6 parameter values drawn from the ranges in table 2. The grey-shaded area shows the region  
7 where an Ag-RDT-led strategy would be 'favourable' over a NAT-only strategy, meaning that it  
8 averts more deaths, and at a lower cost per death averted (see also Fig.S1). Colours of points  
9 indicate the adjunctive, confirmatory role of NAT in an Ag-RDT-led strategy (see in-figure  
10 legend). Of the blue points, 89% fall in the favourable region. (B) Sensitivity analysis on the blue  
11 points in panel (A), to assess when these points fall above, or below, the diagonal dotted  
12 reference line. PRCC denotes 'partial rank correlation coefficient', against the cost per death  
13 averted. (C) The joint role of the two most influential parameters in panel (B). Grey and black  
14 points show parameter combinations where an Ag-RDT is favourable, and non-favourable,  
15 respectively, relative to NAT. Red lines show 90% sensitivity of clinical judgment (vertical line),  
16 and 85% NAT availability (horizontal line). In the lower left quadrant of these lines, an Ag-RDT is  
17 favourable over NAT in 93% of simulations. In these results it is assumed that patients are  
18 placed in isolation and treated (where indicated) while awaiting a NAT result: Figure S2 in the  
19 appendix shows results in the alternative scenario where they are not isolated, nor treated,  
20 pending NAT results.



1  
2  
3 **Figure 3. Relative value of Ag-RDT vs NAT testing, for averting infections in a hospital**  
4 **setting.** (A) scatter plots for the relative impact of Ag-RDT vs NAT (horizontal axis), vs the  
5 relative cost of the two strategies (vertical axis). Of the yellow points (no NAT confirmation of  
6 Ag-RDT results), 25% fall in the favourable region shaded in grey. Details as in Fig.2A, and  
7 Fig.S1. (B) Sensitivity analysis for model parameters on the yellow points in panel (A), to assess  
8 when these points fall to the left, or right, of the vertical, dashed reference line. PRCC denotes  
9 'partial rank correlation coefficient', against the relative impact of Ag-RDT vs NAT-based  
10 strategies. Panel (C) concentrates on the two most influential parameters in this case, NAT  
11 availability and sensitivity of clinical judgement. As in Fig.2C, grey and black points show  
12 parameter regimes where an Ag-RDT is, respectively, favourable and unfavourable, relative to  
13 NAT. Red lines show 75% sensitivity of clinical judgment (horizontal line), and 65% NAT  
14 availability (vertical line). In the lower left quadrant of these lines, an Ag-RDT is favourable over  
15 NAT in 68% of simulations. In these results it is assumed that patients are placed in isolation  
16 while awaiting a NAT result: Figure S3 in the appendix shows results in the alternative scenario  
17 where they are not isolated.



1  
2  
3 **Figure 4. Relative value of Ag-RDT vs NAT testing in a community setting.** We assume  
4 that in a community setting, the focus is on averting infection, and that any severe cases of  
5 respiratory disease are more likely to present in hospital settings (Fig. 3). Hence in this setting,  
6 we focus on infectious person-days averted; we also assume that individuals awaiting NAT  
7 results are not isolated during this time, owing to the infeasibility of doing so in this setting. (A)  
8 Scatter plot of the relative impact of Ag-RDT vs NAT (horizontal axis) vs the relative cost of Ag-  
9 RDT vs NAT (vertical axis). Dashed reference lines are as explained in Fig. 2, and in Fig. S1. Of  
10 the yellow points (no NAT confirmation of Ag-RDT results), 98% fall in the favourable region  
11 shaded in grey. (B) Subgroup sensitivity analysis of the yellow points in panel (A), to assess key  
12 factors determining the relative impact of Ag-RDT vs NAT-based strategies. Because the vast  
13 majority (98%) of simulations show Ag-RDT being favourable to NAT in this scenario, we do not  
14 conduct additional bivariate sensitivity analyses as for Figs. 2C, 3C.

1

Use case scenario	Description	Assumed prevalence	Purpose of testing
Hospital setting	Testing amongst all patients being hospitalised with respiratory symptoms	25%	To identify patients with COVID-19 who should be housed in isolation wards (reducing infection risk in hospital)  Amongst admissions with severe symptoms, to identify those with COVID-19 who might benefit from anti-inflammatory treatment (to reduce deaths)
Community setting	Decentralised, community-level facility available to all individuals with symptoms who want to be tested for COVID-19	5%	To identify COVID-19 amongst people with mild COVID-consistent symptoms. Positive test results would trigger isolation and contact tracing, to minimise opportunities for transmission.

2

3 **Table 1. Two use cases included in the present analysis** of the relative value of antigen-  
4 detection rapid diagnostic tests (Ag-RDTs) compared to nucleic acid tests (NATs).

Parameter	Value		References
	Hospital setting	Community setting	
<b><i>Epidemiology</i></b>			
Prevalence of current or recent SARS-CoV-2 infection (%)	25	5	Assumption
Proportion amongst those tested who are in acute phase	0.5– 1.00	0.5– 1.00	Assumption
Of those in acute phase, number of infectious days remaining (days)	5 – 15	5 – 15	(27)
Proportion who would die without treatment	0.05 – 0.10	N/A	(27,28)
Amongst those who would die without treatment, reduction in mortality by treatment (1 indicates full reduction)	0.40 – 0.60	N/A	(4,7,29–31)
<b><i>NAT performance</i></b>			
NAT sensitivity (for current or recent COVID-19)	0.95 – 0.99	0.95 – 0.99	(15–17)
NAT specificity	0.99 – 1	0.99 – 1	(15–17)
NAT availability (proportion able to access NAT test)	0.1 – 1	0.1 – 1	
Cost per NAT test (\$)	20 – 70	20 – 70	
NAT turnaround time (days)	1 – 10	5 – 15	(10), Expert consultation
Confirm Ag-RDT negative results with NAT	Y/N	Y/N	
Confirm Ag-RDT positive results with NAT *	Y/N	Y/N	
Isolate and initiate treatment (if indicated) whilst awaiting NAT result	Y **	N	
<b><i>Ag-RDT performance (assumed fixed)</i></b>			
Ag-RDT sensitivity for current infection (% , assumed only amongst acute cases)	0.80	0.80	(13,14)
Ag-RDT specificity (%)	0.98	0.98	(13,14)
Cost per Ag-RDT test (\$)	5	5	
<b><i>Clinical judgement and management</i></b>			
Sensitivity of clinical judgment in absence of NAT	0.45 – 0.99	0.45 – 0.99	(32–35)
Specificity of clinical judgment in absence of NAT	0.20 – 0.50	0.20 – 0.50	(32–35)
Amongst those who would survive without treatment (including COVID -ve and COVID +ve),	0 – 0.1	N/A	

proportion erroneously identified as needing treatment			
Amongst COVID +ve who would die without treatment, proportion correctly identified as such	0.8 – 1	N/A	
Duration of isolation (days)	10	10	(27)
Duration of treatment (days)	10	N/A	(7)
Cost of isolation per day (\$)	10 – 100	10 – 100	
Cost of treatment per day (\$)	50 – 500	N/A	(36,37)

1  
2 **Table 2. Contextual parameters and their uncertainty ranges.** For each parameter, we  
3 assumed a uniform distribution spanning the range shown. Footnotes: \*We exclude any  
4 parameter draws involving NAT confirmation of *both* Ag-RDT negative and Ag-RDT positive  
5 results. \*\*For patients with COVID-19 initiated on interim treatment while awaiting NAT  
6 confirmation of an Ag-RDT result, but who subsequently receive an incorrect negative NAT  
7 result, we assume that they do not receive any benefits of interim treatment.



## References

1. World Health Organisation. WHO COVID-19 Preparedness and Response Progress Report - 1 February to 30 June 2020. Geneva: WHO; 2020.
2. Cheng MP, Papenburg J, Desjardins M, Kanjilal S, Quach C, Libman M, et al. Diagnostic Testing for Severe Acute Respiratory Syndrome–Related Coronavirus-2. *Ann Intern Med*. 2020;M20-1301.
3. Grassly NC, Pons-Salort M, Parker EPK, White PJ, Ferguson NM, Imperial College COVID-19 response team. Comparison of molecular testing strategies for COVID-19 control: a mathematical modelling study. *Lancet Infect Dis*. 2020;
4. Wiersinga WJ, Rhodes A, Cheng AC, et al. Pathophysiology, Transmission, Diagnosis, and Treatment of Coronavirus Disease 2019 (COVID-19). *JAMA*. 2020;324(8):782–93.
5. Schiffer JT, Johnston C, Wald A, Corey L. An Early Test-and-Treat Strategy for Severe Acute Respiratory Syndrome Coronavirus 2. *Open Forum Infect Dis*. 2020;7(7):ofaa232.
6. Sun Q, Huang M, Yang Y. Lower mortality of COVID-19 by early recognition and intervention: experience from Jiangsu Province. *Ann Intensive Care*. 2020;10(33).
7. The RECOVERY Collaborative Group. Dexamethasone in Hospitalized Patients with Covid-19 — Preliminary Report. *N Engl J Med*. 2020;NEJMoa2021436.
8. Caruana G, Croxatto A, Coste AT, Opota O, Lamoth F, Jatun K, et al. Diagnostic strategies for SARS-CoV-2 infection and interpretation of microbiological results. *Clin Microbiol Infect*. 2020;26(9):1178–82.
9. Mendelson M, Madhi SA. South Africa’s coronavirus testing strategy is broken and not fit for purpose: It’s time for a change. *S Afr Med J*. 2020;110(6).
10. Kobia F, Gitaka J. COVID-19: Are Africa’s diagnostic challenges blunting response effectiveness? *AAS Open Res*. 2020;3(4).
11. World Health Organisation. COVID-19 Target product profiles for priority diagnostics to support response to the COVID-19 pandemic v.1.0. Geneva, Switzerland: WHO; 2020.
12. Dinnes J, Deeks JJ, Adriano A, Berhane S, Davenport C, Dittrich S, et al. Rapid, point-of-care antigen and molecular-based tests for diagnosis of SARS-CoV-2 infection. *Cochrane Database Syst Rev*. 2020;
13. World Health Organisation. Antigen-detection in the diagnosis of SARS-CoV-2 infection using rapid immunoassays. Geneva, Switzerland: WHO; 2020.
14. U.S. food and drug administration. In Vitro Diagnostics EUAs [Internet]. USA: FDA; 2020. (Coronavirus Disease 2019 (COVID-19) Emergency Use Authorizations for Medical Devices). Available from: <https://www.fda.gov/medical-devices/coronavirus-disease-2019-covid-19-emergency-use-authorizations-medical-devices/vitro-diagnostics-euas#individual-antigen>

15. Sethuraman N, Jeremiah SS, Ryo A. Interpreting Diagnostic Tests for SARS-CoV-2. *JAMA*. 2020;323(22):2249–51.
16. Wölfel R, Corman VM, Guggemos W, Seilmaier M, Zange S, Müller MA, et al. Virological assessment of hospitalized patients with COVID-2019. *Nature*. 2020;581:465–9.
17. Kang H, Wang Y, Tong Z, Liu X. Retest positive for SARS-CoV-2 RNA of “recovered” patients with COVID-19: Persistence, sampling issues, or re-infection? *J Med Virol*. 2020;
18. Garg S, Kim L, Whitaker M, O’Halloran A, Cummings C, Holstein R, et al. Hospitalization Rates and Characteristics of Patients Hospitalized with Laboratory-Confirmed Coronavirus Disease 2019 - COVID-NET, 14 States, March 1-30, 2020. *MMWR Morb Mortal Wkly Rep*. 2020;69(15):458–64.
19. Pekosz A, Cooper C, Parvu V, Li M, Andrews J, Manabe YCC, et al. Antigen-based testing but not real-time PCR correlates with SARS-CoV-2 virus culture. *MedRxiv Prepr*. 2020;
20. van Beek J, Igloi Z, Boelsums T, Fanoy E, Gotz H, Molenkamp R, et al. From more testing to smart testing: data-guided SARS-CoV-2 testing choices. *MedRxiv Prepr*. 2020;
21. Branch-Elliman W, Safdar N, Nelson R. Economic Considerations in Infectious Diseases Emergency Response Preparedness: It’s All About the Point of View. *Clin Infect Dis*. 2020;ciaa541.
22. Larremore DB, Wilder B, Lester E, Shehata S, Burke JM, Hay JA. Test sensitivity is secondary to frequency and turnaround time for COVID-19 surveillance. *MedRxiv Prepr*. 2020;
23. Zheng S, Fan J, Yu F, Feng B, Lou B, Zhou Q, et al. Viral load dynamics and disease severity in patients infected with SARS-CoV-2 in Zhejiang province, China, January-March 2020: retrospective cohort study. *BMJ*. 2020;369:m1443.
24. Walsh KA, Jordan K, Clyne B, Rhode D, Drummond L, Byrne P. SARS-CoV-2 detection, viral load and infectivity over the course of an infection. *J Infect*. 2020;81(3):357–71.
25. Ferretti L, Wymant C, Kendall M, Zhao L, Nurtay A, Abeler-Dörner L, et al. Quantifying SARS-CoV-2 transmission suggests epidemic control with digital contact tracing. *Science*. 2020;368(6491):eabb6936.
26. He X, Lau EHY, Wu P, Deng X, Wang J, Hao X, et al. Temporal dynamics in viral shedding and transmissibility of COVID-19. *Nat Med*. 2020;26:672–5.
27. Zhou F, Yu T, Du R, Fan G, Liu Y, Liu Z. Clinical course and risk factors for mortality of adult inpatients with COVID-19 in Wuhan, China: a retrospective cohort study. *The Lancet*. 2020;395(10229):1054–62.
28. Verity R, Okell LC, Dorigatti I, Winskill P, Whittaker C, Imai N, et al. Estimates of the severity of coronavirus disease 2019: a model-based analysis. *Lancet Infect Dis*. 2020;20(6):669–77.
29. Wang Y, Zhang D, Du G, Du R, Zhao J, Jin Y, et al. Remdesivir in adults with severe COVID-19: a randomised, double-blind, placebo-controlled, multicentre trial. *Lancet*. 2020;395(10236):1569–78.

30. Grein J, Ohmagari N, Shin D, Diaz G, Asperges E, Castagna A, et al. Compassionate Use of Remdesivir for Patients with Severe Covid-19. *N Engl J Med*. 2020;NEJMoa2007016.
31. Li L, Zhang W, Hu Y, Tong X, Zheng S, Yang J, et al. Effect of Convalescent Plasma Therapy on Time to Clinical Improvement in Patients With Severe and Life-threatening COVID-19: A Randomized Clinical Trial. *JAMA*. 2020;324(5):460–70.
32. Wang D, Hu B, Hu C, Zhu F, Liu X, Zhang J, et al. Clinical Characteristics of 138 Hospitalized Patients With 2019 Novel Coronavirus–Infected Pneumonia in Wuhan, China. *JAMA*. 2020;323(11):1061–9.
33. Sun Y, Koh V, Marimuthu K, Ng OT, Young B, Vasoo S, et al. Epidemiological and Clinical Predictors of COVID-19. *Clin Infect Dis*. 2020;71(15):786–92.
34. Lechien JR, Chiesa-Estomba CM, Place S, Laethem YV, Cabaraux P, Mat Q, et al. Clinical and epidemiological characteristics of 1420 European patients with mild-to-moderate coronavirus disease 2019. *J Intern Med*. 2020;288(3):335–44.
35. Kim H, Hong H, Yoon SH. Diagnostic Performance of CT and Reverse Transcriptase-Polymerase Chain Reaction for Coronavirus Disease 2019: A Meta-Analysis. *Radiology*. 2020;201343.
36. Erman M, Burger L, Maddipatla M. Gilead prices COVID-19 drug remdesivir at \$2,340 per patient in developed nations. Reuters [Internet]. 2020 Jun 29; Available from: <https://uk.reuters.com/article/uk-health-coronavirus-gilead-sciences/gilead-prices-covid-19-drug-remdesivir-at-2340-per-patient-in-developed-nations-idUKKBN2401OT>
37. World Health Organisation. Q&A: Dexamethasone and COVID-19. Geneva, Switzerland: WHO; 2020.