

# 1 **Community factors and excess mortality in first wave of the COVID-19 pandemic**

2  
3 Bethan Davies<sup>1,2,3,4,5</sup>, Brandon L Parkes<sup>1,2,5</sup>, James Bennett<sup>1,2,5</sup>, Daniela Fecht<sup>1,2,5</sup>, Marta  
4 Blangiardo<sup>1,2,3</sup>, Majid Ezzati<sup>1,2,4</sup>, Paul Elliott<sup>1,2,3,4,6</sup>

5  
6 <sup>1</sup> UK Small Area Health Statistics Unit, Department of Epidemiology and Biostatistics, School  
7 of Public Health, Imperial College London, Norfolk Place, W2 1PG, London, United Kingdom.

8  
9 <sup>2</sup> MRC Centre for Environment and Health, Department of Epidemiology and Biostatistics,  
10 School of Public Health, Imperial College London, Norfolk Place, W2 1PG, London, United  
11 Kingdom.

12  
13 <sup>3</sup> National Institute for Health Research Health Protection Research Unit on Chemical and  
14 Radiation Hazards, Department of Epidemiology and Biostatistics, School of Public Health,  
15 Imperial College London, Norfolk Place, W2 1PG, London, United Kingdom.

16  
17 <sup>4</sup> National Institute for Health Research Health Protection Research Unit in Environmental  
18 Exposures and Health, Department of Epidemiology and Biostatistics, School of Public Health,  
19 Imperial College London, Norfolk Place, W2 1PG, London, United Kingdom.

20  
21 <sup>5</sup> These authors contributed equally to this work

22  
23 <sup>6</sup> Address for correspondence: [p.elliott@imperial.ac.uk](mailto:p.elliott@imperial.ac.uk)

24  
25 **Risk factors for increased risk of death from Coronavirus Disease 19 (COVID-19) have**  
26 **been identified<sup>1,2</sup> but less is known on characteristics that make communities resilient or**  
27 **vulnerable to the mortality impacts of the pandemic. We applied a two-stage Bayesian**  
28 **spatial model to quantify inequalities in excess mortality at the community level during**  
29 **the first wave of the pandemic in England. We used geocoded data on all deaths in**  
30 **people aged 40 years and older during March-May 2020 compared with 2015-2019 in**  
31 **6,791 local communities. Here we show that communities with an increased risk of**  
32 **excess mortality had a high density of care homes, and/or high proportion of residents**  
33 **on income support, living in overcrowded homes and/or high percent of people with a**  
34 **non-White ethnicity (including Black, Asian and other minority ethnic groups).**  
35 **Conversely, after accounting for other community characteristics, we found no**  
36 **association between population density or air pollution and excess mortality. Overall,**  
37 **the social and environmental variables accounted for around 15% of the variation in**  
38 **mortality at community level. Effective and timely public health and healthcare**  
39 **measures that target the communities at greatest risk are urgently needed if England**  
40 **and other industrialised countries are to avoid further widening of inequalities in**  
41 **mortality patterns during the second wave.**

42 Excess mortality during the COVID-19 pandemic is the combination of deaths caused, or  
43 contributed to, by infection with SARS-CoV-2 plus deaths that resulted from the widespread  
44 behavioural, social and healthcare changes that accompanied national responses to the  
45 emergency<sup>1,3-5</sup>. England has experienced one of the highest death tolls from COVID-19 in the  
46 industrialised world, far beyond what would be expected from its underlying health status and  
47 factors like obesity<sup>1,2,6,7</sup>. COVID-19 may substantially widen existing national health  
48 inequalities as the direct and indirect impacts of the pandemic may disproportionately effect  
49 the population groups with the highest healthcare utilisation: the elderly, people with chronic  
50 health conditions, people from a minority ethnic background and people who live in more  
51 deprived areas<sup>2,8</sup>.

52

53 Rates of diagnosed SARS-CoV-2 infections and deaths among people with confirmed infection  
54 vary substantially across England<sup>9</sup>. But neither local variations in all-cause mortality associated  
55 with the pandemic, nor their community determinants, are well understood; population density  
56 and urbanisation are often mentioned as major contributory factors in urbanised industrialised  
57 countries<sup>10,11</sup>. Here, we analysed geocoded data on all-cause mortality at ages 40 years and  
58 over for 6,791 local communities (Middle Super Output Areas [MSOAs]; median population  
59 7,956 in 2018, median area 3.04 km<sup>2</sup>, Extended Data Table 1) in England to quantify local  
60 variations in excess mortality in the first wave of the pandemic, from 1 March to 31 May 2020,  
61 and to identify the community characteristics associated with these patterns.

62

63 From 1 March to 31 May 2020, 171,294 people at ages 40 years and over died in England,  
64 compared with a mean of 121,358 deaths in the same period in 2105-2019, equivalent to 49,936  
65 excess deaths. Compared with 2015-2019, a greater proportion of the deaths in 2020 were in  
66 men, in care homes and a smaller proportion occurred in hospitals (Fig. 1).

67

68 Because communities (MSOAs) are small, we used a Bayesian spatial model to obtain stable  
69 estimates of excess death rates based on data for each community and those of its neighbours  
70 to reduce uncertainty (Methods). The spatial model included terms for potential community  
71 determinants of mortality: percent population on income support as a marker of area poverty;  
72 population density; percent who are non-White; and percent population living in overcrowded  
73 homes. We also included air pollution, namely annual average nitrogen dioxide (NO<sub>2</sub>) and fine  
74 particulate matter (PM<sub>2.5</sub>) and number of care homes per 1,000 population. Data sources and  
75 definitions of these variables are detailed in Methods. Each variable was divided into quintiles  
76 of the distribution to allow for non-linear relationships (Extended Data Table 2).

77

78 All but 360 communities in men and 668 in women had higher mortality in 2020 than expected  
79 based on prior years (Fig. 2) with a posterior probability of increased mortality of at least 90%  
80 in 4,240 (62.4%) communities in men and 3,166 (46.7%) in women. Of these, mortality more  
81 than doubled in 697 (10.3%) and more than tripled in 18 (0.26%) communities in men and in  
82 498 (7.3%) and 15 (0.22%) communities respectively in women (Extended Data Table 3).

83

84 The communities with an increase in mortality were spread across the country with the lowest  
85 increases in remote rural areas (Fig. 3). The largest increases in mortality were concentrated in  
86 London<sup>12</sup>, especially for men; for women high excess mortality also occurred in suburban  
87 areas. In men, 30.8% of variation in excess mortality was explained by local clustering but only  
88 18.4% in women, suggesting greater correlation in excess mortality between neighbouring  
89 areas for men than women. On average, communities with large increases in mortality tended  
90 to have greater social and environmental deprivation than those with small increases (Fig. 2).

91

92 The combination of a large relative increase in mortality and a high baseline (i.e. pre-pandemic)  
93 death rate meant that men in 2,240 communities and women in 1,544 communities experienced  
94 250 or more excess deaths per 100,000 people aged 40 years and over compared with the prior  
95 years; in 333 communities for men and 305 for women, the excess mortality burden was at  
96 least 500 per 100,000 people. The large variation in excess death rates meant that 25% of all  
97 excess deaths during the pandemic occurred in only 9.4% of communities for men and 9.1%  
98 for women, and one half of excess deaths occurred in 24.3% and 24.2% of communities,  
99 respectively. Excess deaths per 100,000 people were only moderately correlated between men  
100 and women (Extended Data Fig. 1 and 2).

101

102 Each of the community characteristics considered was individually (i.e. in univariate analysis)  
103 associated with excess deaths during the pandemic in graded fashion across quintiles (Fig. 4,  
104 Extended Data Table 4). However, there were strong inter-correlations between some  
105 variables; for example, Kendall's Tau was 0.67 and 0.55 between percent non-White  
106 population and levels of NO<sub>2</sub> and PM<sub>2.5</sub> respectively (Extended Data Table 5). When the  
107 community characteristics were considered jointly in multivariable analyses, air pollution and  
108 population density were no longer associated with excess deaths, contrary to reports in some  
109 studies that air pollution is a contributory factor for COVID-19 deaths (Extended Data Table  
110 6)<sup>13-16</sup>. Relationships with income support, percent non-White population and overcrowded  
111 homes persisted, although were attenuated – with a ~10% higher rate across quintiles for men,  
112 and somewhat weaker associations for women. The relationship with care home density, even  
113 after accounting for the other variables, remained strong, with a ~22% higher excess death rate  
114 for men and ~27% for women in communities with the highest compared to lowest density of  
115 care homes; many of these deaths were not assigned to COVID-19<sup>17</sup>. Overall, the community  
116 variables accounted for 17.6% of the variation in mortality at community level in men and

117 14.9% in women (Extended Data Table 6). Sensitivity analyses with different smoothing  
118 parameters, excluding deaths in care homes, and combining data for men and women, did not  
119 materially alter our findings (Extended Data Table 7 a-e)

120

121 Our study has strengths and limitations. We included excess mortality from all causes, not just  
122 deaths coded to COVID-19. This should give the most complete picture of the effects of the  
123 pandemic on mortality and is comparable across geographies, as it is not dependent on  
124 availability of testing or diagnostic facilities nor variations in national or local coding practices.  
125 Not only could COVID-19 deaths have been wrongly ascribed to other causes but deaths from  
126 other causes may have been affected by the switching of healthcare resources to deal with the  
127 pandemic<sup>6,8,18-20</sup>. Although we accounted for population changes in the communities during the  
128 study period, population estimates at this scale were only available to 2018 and were  
129 extrapolated for the subsequent years. We used mortality data for the same three months of the  
130 year (March to May) over the previous five years to estimate the expected numbers of deaths  
131 in those months during 2020. But factors like temperature may modify the number of deaths  
132 observed. In addition, we used data from the last national census in 2011 to obtain information  
133 on sociodemographic characteristics of communities. To the extent that there have been  
134 demographic changes in the nine years since then, this may have led to misclassification of  
135 areas with respect to their community characteristics.

136

137 Our finding on the importance of care home density as a predictor of local excess mortality is  
138 consistent with the policy in the National Health Service to discharge up to 15,000 medically  
139 fit inpatients to avoid hospitals becoming overwhelmed<sup>21</sup>. It is likely that many of the elderly  
140 individuals discharged in this way will have needed support from social care services  
141 (including care homes) on discharge<sup>22</sup> and may have not been tested for the SARS-CoV-2 virus

142 prior to discharge<sup>23</sup>. Our study also underlines the associations between excess mortality and  
143 poverty, non-White ethnicity<sup>24,25</sup> and overcrowded housing<sup>26,27</sup> at the community-level. Those  
144 living in poor communities and overcrowded homes have fewer opportunities for adopting  
145 measures that reduce transmission<sup>28</sup>, have higher exposure to infection at work or may be more  
146 restricted in terms of accessing healthcare for COVID-19 and other conditions<sup>29</sup>. Recent and  
147 ongoing research indicates that higher risks associated with ethnicity may at least in part reflect  
148 higher levels of overcrowding and poverty (adjusted for in our analysis), higher representation  
149 in frontline jobs in the health and care sector<sup>12,30</sup>, slower access to and utilisation of  
150 healthcare<sup>26,29,31,32</sup>, and possibly higher rates of co-morbidities such as diabetes and  
151 obesity<sup>2,33,34</sup>. Further research to understand the pathways underpinning these associations is  
152 needed to inform long-term strategy to tackle the social and environmental drivers of inequality  
153 that may have contributed to differential mortality during the pandemic.

154

155 In the short-term, as industrialised countries in Europe and elsewhere confront the pandemic's  
156 second wave, in addition to more attention to protecting care home residents and workers<sup>35</sup>, the  
157 response from many governments has been either a national lockdown or a tiered lockdown  
158 applied primarily to cities<sup>36</sup>. England has now entered its second national lockdown.  
159 Lockdowns in the first wave were highly effective at driving down the rates of new infection,  
160 but they are not sustainable<sup>4,37-39</sup>. Therefore, the immediate priority is to continue to strengthen  
161 public health systems to ensure they have the capacity, in real-time, to test and diagnose newly  
162 infected individuals; identify their contacts; provide self-isolation and quarantine advice; and  
163 undertake national surveillance to inform the evolving policy response<sup>40</sup>. In parallel, economic  
164 interventions that support job security and provide financial compensation to low-paid workers  
165 required to self-isolate are essential to support population-level compliance with public health  
166 advice<sup>41,42</sup>.

167

168 In summary, in one of the worst affected industrialised countries in the first wave of the  
169 COVID-19 pandemic, we found substantial community-level variation in excess mortality,  
170 ranging from small declines to tripling in mortality in some areas. Although at first glance the  
171 high increases are more evident in cities, population density itself does not appear to be a  
172 driver of excess mortality; rather excess mortality risks are related to poverty, overcrowded  
173 homes and non-White ethnicity, parallel to large impacts in communities where care homes  
174 are located. While we found that these community factors and geographical clustering  
175 contributed independently to patterns of excess mortality, a large proportion of the variance  
176 remained unexplained. This underlines the importance of using real-time surveillance to  
177 identify local outbreaks and target public health resource according to need. A robust public  
178 health response is essential if England and other industrialised countries are to control the  
179 transmission of SARS-CoV-2 and avoid further widening of inequalities in mortality patterns  
180 during the second wave.

181 **References**

182

- 183 1 Kontis, V. *et al.* Magnitude, demographics and dynamics of the impact of the first  
184 phase of the Covid-19 pandemic on all-cause mortality in 17 industrialised countries.  
185 *Nat Med*, doi:<https://doi.org/10.1038/s41591-020-1112-0> (2020).
- 186 2 Williamson, E. J. *et al.* Factors associated with COVID-19-related death using  
187 OpenSAFELY. *Nature* **584**, 430-436 (2020).
- 188 3 Bilinski, A. & Emanuel, E. J. COVID-19 and Excess All-Cause Mortality in the US  
189 and 18 Comparison Countries. *Jama*, doi:[10.1001/jama.2020.20717](https://doi.org/10.1001/jama.2020.20717) (2020).
- 190 4 Douglas, M., Katikireddi, S. V., Taulbut, M., McKee, M. & McCartney, G. Mitigating  
191 the wider health effects of covid-19 pandemic response. **369**, m1557,  
192 doi:[10.1136/bmj.m1557](https://doi.org/10.1136/bmj.m1557) %J BMJ (2020).
- 193 5 Woolf, S. H., Chapman, D. A., Sabo, R. T., Weinberger, D. M. & Hill, L. Excess  
194 Deaths From COVID-19 and Other Causes, March-April 2020. *Jama* **324**, 510-513,  
195 doi:[10.1001/jama.2020.11787](https://doi.org/10.1001/jama.2020.11787) (2020).
- 196 6 Office for National Statistics. Analysis of all-cause mortality patterns of selected  
197 European countries and regions, week ending 3 January (Week 1) to week ending 12  
198 June (Week 24) 2020., (2020).
- 199 7 Zhou, F. *et al.* Clinical course and risk factors for mortality of adult inpatients with  
200 COVID-19 in Wuhan, China: a retrospective cohort study. *The Lancet* **395**, 1054-  
201 1062, doi:[https://doi.org/10.1016/S0140-6736\(20\)30566-3](https://doi.org/10.1016/S0140-6736(20)30566-3) (2020).
- 202 8 Propper Carol, S., George and Zaranko, Ben. . The wider impacts of the coronavirus  
203 pandemic on the NHS: Briefing note Report No. ISBN 978-1-912805-70-9, (2020).
- 204 9 Office for National Statistics. Deaths involving COVID-19 by local area and  
205 socioeconomic deprivation: deaths occurring between 1 March and 31 July 2020.  
206 (Office for National Statistics, 2020).
- 207 10 CDC COVID-19 Response Team. Geographic Differences in COVID-19 Cases,  
208 Deaths, and Incidence - United States, February 12-April 7, 2020. *MMWR Morb*  
209 *Mortal Wkly Rep.* **69**, 465-471, doi:[10.15585/mmwr.mm6915e4](https://doi.org/10.15585/mmwr.mm6915e4) (2020).
- 210 11 Hernández-Moralez, A., Oroschakoff, Kalina & Barigazzi, Jacopo. in *Politico*  
211 (2020).
- 212 12 Ward, H. *et al.* Antibody prevalence for SARS-CoV-2 in England following first peak  
213 of the pandemic: REACT2 study in 100,000 adults. *medRxiv* (2020).



214 13 Cole, M. A., Ozgen, C. & Strobl, E. Air Pollution Exposure and Covid-19 in Dutch  
215 Municipalities. *Environmental and Resource Economics* **76**, 581-610 (2020).

216 14 Konstantinoudis, G. *et al.* Long-term exposure to air-pollution and COVID-19  
217 mortality in England: a hierarchical spatial analysis. *medRxiv* (2020).

218 15 Magazzino, C., Mele, M. & Schneider, N. The relationship between air pollution and  
219 COVID-19-related deaths: an application to three French cities. *Applied Energy*,  
220 115835 (2020).

221 16 Wu, X., Nethery, R. C., Sabath, B. M., Braun, D. & Dominici, F. Exposure to air  
222 pollution and COVID-19 mortality in the United States. *medRxiv* (2020).

223 17 Iacobucci, G. Covid-19: UK government is urged to publish daily care home deaths as  
224 it promises more testing. *BMJ* **369m**, 1504, doi:<https://doi.org/10.1136/bmj.m1504>  
225 (2020).

226 18 Karanikolos, M. & McKee, M. How comparable is COVID-19 mortality across  
227 countries. *COVID-19 Health System Monitor* **4** (2020).

228 19 Newton, J. Behind the headlines: counting COVID-19 deaths. *Public Health Matters*  
229 (2020).

230 20 Watson, J., Whiting, P. F. & Brush, J. E. Interpreting a covid-19 test result. *BMJ*  
231 **369m**, 1808, doi:<https://doi.org/10.1136/bmj.m1808> (2020).

232 21 Stevens, S., Pritchard, A. . *Important and urgent - next steps on NHS reponse to*  
233 *COVID-19*, <[https://www.england.nhs.uk/coronavirus/wp-](https://www.england.nhs.uk/coronavirus/wp-content/uploads/sites/52/2020/03/urgent-next-steps-on-nhs-response-to-covid-19-letter-simon-stevens.pdf)  
234 [content/uploads/sites/52/2020/03/urgent-next-steps-on-nhs-response-to-covid-19-](https://www.england.nhs.uk/coronavirus/wp-content/uploads/sites/52/2020/03/urgent-next-steps-on-nhs-response-to-covid-19-letter-simon-stevens.pdf)  
235 [letter-simon-stevens.pdf](https://www.england.nhs.uk/coronavirus/wp-content/uploads/sites/52/2020/03/urgent-next-steps-on-nhs-response-to-covid-19-letter-simon-stevens.pdf)> (2020).

236 22 Emmerson, C. *et al.* Risk factors for outbreaks of COVID-19 in care homes following  
237 hospital discharge: a national cohort analysis. *medRxiv* (2020).

238 23 Healthwatch. 590 people’s stories of leaving hospital during COVID-19. (2020).

239 24 Public Health England. Beyond the data: Understanding the impact of COVID-19 on  
240 BAME groups., (PHE, London, UK., 2020).

241 25 Price-Haywood, E. G., Burton, J., Fort, D. & Seoane, L. Hospitalization and Mortality  
242 among Black Patients and White Patients with Covid-19. **382**, 2534-2543,  
243 doi:[10.1056/NEJMsa2011686](https://doi.org/10.1056/NEJMsa2011686) (2020).

244 26 Aldridge, R. W. *et al.* Black, Asian and Minority Ethnic groups in England are at  
245 increased risk of death from COVID-19: indirect standardisation of NHS mortality  
246 data. *Wellcome Open Research* **5**, 88 (2020).

247 27 Patel, J. *et al.* Poverty, inequality and COVID-19: the forgotten vulnerable. *Public*  
248 *health* **183**, 110 (2020).

249 28 Smith, L. E. *et al.* Factors associated with adherence to self-isolation and lockdown  
250 measures in the UK; a cross-sectional survey. *medRxiv* (2020).

251 29 Stoye, G., Zaranko, B., Shipley, M., McKee, M. & Brunner, E. J. Educational  
252 Inequalities in Hospital Use Among Older Adults in England, 2004-2015. *The*  
253 *Milbank Quarterly* (2020).

254 30 Mathur, R. *et al.* Ethnic differences in COVID-19 infection, hospitalisation, and  
255 mortality: an OpenSAFELY analysis of 17 million adults in England. *medRxiv*  
256 (2020).

257 31 House, N., Holborn, H. & Wc, L. ICNARC report on COVID-19 in critical care.  
258 *Published online* **26**, 24 (2020).

259 32 Office for National Statistics. Coronavirus (COVID-19) related deaths by ethnic  
260 group, England and Wales: 2 March 2020 to 10 April 2020 [Online]. . (2020).

261 33 Goff, L. M. Ethnicity and Type 2 diabetes in the UK. *Diabetic Medicine* **36**, 927-938  
262 (2019).

263 34 Townsend, M. J., Kyle, T. K. & Stanford, F. C. Outcomes of COVID-19: disparities  
264 in obesity and by ethnicity/race. *International Journal of Obesity* **44**, 1807–1809,  
265 doi:<https://doi.org/10.1038/s41366-020-0635-2> (2020).

266 35 Oliver, D. David Oliver: Preventing more deaths in care homes in a second pandemic  
267 surge. *BMJ* **369**, m2461, doi:10.1136/bmj.m2461 %J BMJ (2020).

268 36 Department of Health and Social Care. *Local restrictions: areas with an outbreak of*  
269 *coronavirus (COVID-19)*, <[https://www.gov.uk/government/collections/local-](https://www.gov.uk/government/collections/local-restrictions-areas-with-an-outbreak-of-coronavirus-covid-19)  
270 [restrictions-areas-with-an-outbreak-of-coronavirus-covid-19](https://www.gov.uk/government/collections/local-restrictions-areas-with-an-outbreak-of-coronavirus-covid-19)> (2020).

271 37 Office for National Statistics. Coronavirus and the impact on output in the UK  
272 economy: April 2020. (ONS, 2020).

273 38 Riley, S., Ainslie, K., Eales, O., Walters, C., Wang, W., Atchison, C., Diggle, P.,  
274 Ashby, D., Donnelly, C., Cooke, G., Barclay, W., Ward, H., Darzi, D., Elliot, P. .  
275 Transient dynamics of SARS-CoV-2 as England exited national lockdown. *Preprint*  
276 (2020).

277 39 Vinceti, M. *et al.* Lockdown timing and efficacy in controlling COVID-19 using  
278 mobile phone tracking. *EClinicalMedicine* **25**, 100457,  
279 doi:10.1016/j.eclinm.2020.100457 (2020).

280 40 Roderick, P., Macfarlane, A. & Pollock, A. M. Getting back on track: control of  
281 covid-19 outbreaks in the community. *bmj* **369** (2020).

282 41 Michie, S. *et al.* Reducing SARS-CoV-2 transmission in the UK: A behavioural  
283 science approach to identifying options for increasing adherence to social distancing  
284 and shielding vulnerable people. *British Journal of Health Psychology* (2020).

285 42 Smith, L. E. *et al.* Adherence to the test, trace and isolate system: results from a time  
286 series of 21 nationally representative surveys in the UK (the COVID-19 Rapid Survey  
287 of Adherence to Interventions and Responses [CORSAIR] study). *medRxiv* (2020).

288 **Methods**

289

290 **Data sources**

291 The study uses data held by the UK Small Area Health Statistics Unit (SAHSU), obtained from  
292 the Office for National Statistics (ONS). The ONS individual mortality data included date of  
293 death, date of registration of death, place of residence of the deceased, place of death (e.g.  
294 hospital, hospice, care home, at home), and International Classification of Diseases tenth  
295 revision (ICD10) codes of the underlying cause of death. Annual population was from ONS  
296 mid-year population estimates by age and sex for communities (MSOAs) in England, 2015 to  
297 2018. 2019 MSOA populations were estimated by distributing 2019 local authority district  
298 populations according to MSOA shares in 2018. No 2020 population data are yet available and  
299 2019 estimates were used instead.

300

301 **Characteristics of MSOAs (communities)**

302 To investigate the association of community characteristics with excess mortality we included  
303 the following data at MSOA level:

- 304 • Income deprivation: Proportion of the population (adults and children, including  
305 asylum seekers) on government assistance due to low income and unemployment<sup>43</sup>.
- 306 • Population density: Number of people per square kilometre from 2019 mid-year  
307 population estimates, as described above.
- 308 • Ethnicity: Percentage of the population of ethnic origin other than White from 2011  
309 census data<sup>44</sup>.
- 310 • Housing: Percentage of overcrowded households defined as households with at least  
311 one fewer bedroom as required based on the number of household members and their  
312 relationship to each other, from 2011 census data<sup>44</sup>.
- 313 • Air pollution: Annual average concentrations of nitrogen dioxide (NO<sub>2</sub>) and fine  
314 particulate matter (PM<sub>2.5</sub>) for 2018 at 1km x 1km grids, modelled to MSOA level using  
315 2011 postcode headcount information<sup>45</sup>.
- 316 • Location of care homes: Care homes per 1,000 population using data from the Care  
317 Quality Commission via Geolytix<sup>46</sup>.

318 All covariates were divided into quintiles, giving approximately 1,360 MSOAs in each quintile.

319

320

321 **Statistical methods**

322 All analyses were carried out for males and females separately. We split age into four groups:  
323 40-59 years; 60-69 years; 70-79 years; 80+ years.

324

325 We used a two-stage approach in order that the pandemic and comparison periods were treated  
326 as independent and distinct. First, we obtained estimates of the death rates in each MSOA for  
327 the comparison period of 1 March to 31 May 2015-2019 using a model that incorporated spatial  
328 and age terms to obtain stable estimates of death rates in each age group. Then in a second  
329 stage, we modelled the death rates from 1 March to 31 May 2020, relative to the death rates  
330 estimated for the comparison period. We estimated excess mortality for each MSOA by  
331 comparing death rates for these three months between 2020 and 2015-2019 by sex and age-  
332 group. In the second stage we included spatial and age terms as well as community variables  
333 to assess their effect on excess mortality. The spatial terms in both stages allowed for local  
334 smoothing across communities as well as global smoothing across England and were shared  
335 across all age groups.

336

337 In the first stage we adjusted for age and smoothed over space to obtain stable estimates of the  
338 death rates for the comparison period. We assumed that the number of deaths  $y_{itk}$  for the  $i$ -th  
339 MSOA ( $i=1, \dots, 6,791$ ), the  $t$ -th year ( $t=2015, \dots, 2019$ ) and  $k$ -th age group ( $k=40-59, 60-69, 70-$   
340  $79, 80+$ ) arose from a Poisson distribution:

341 
$$y_{itk} \sim \text{Poisson}(\lambda_{ikt1} \cdot \text{Pop}_{itk})$$

342 with the log-transformed death rates modelled as a sum of space, age and time terms:

343 
$$\log(\lambda_{ikt1}) = \alpha_0 + \beta_{0k} + U_{0i} + V_{0i} + \gamma_t. \quad (1)$$

344 The common intercept for log-transformed death rates is represented by  $\alpha_0$ , with  $\beta_{0k}$  the age  
345 effect for the  $k$ -th age group. We modelled MSOA-level intercepts using a Besag, York and  
346 Mollie spatial model <sup>47</sup>; this includes spatially unstructured, independent and identically  
347 distributed Gaussian random effects ( $V_{0i}$ ) and spatially structured random effects ( $U_{0i}$ ). The  
348 latter were modelled with an intrinsic conditional autoregressive prior, which allows for death  
349 rates to be more similar across neighbouring MSOAs than those that are far away. This spatial  
350 model provides both local and global smoothing on the underlying death rate  $\lambda_{ikt1}$ .

351

352 We obtained the posterior distributions of the death rates in each MSOA, age group and year,  
353  $\lambda_{ikt1}$ , and averaged over March to May for the 5 years of the comparison period (2015-2019)

354 to obtain  $\lambda_{ik1}$ , the expected death rate for the  $i$ -th MSOA and  $k$ -th age group during March-  
355 May 2020 had there been an absence of the pandemic.

356

357 In the second stage we estimated the ratio between death rates in March to May 2020 and the  
358 death rates we would have expected had there been no pandemic, using data for the same  
359 three months for 2015-2019. We estimated the effect of community variables on this ratio.  
360 For the number of deaths in the  $i$ -th MSOA and  $k$ -th age group in 2020, we specified the  
361 following model:

$$362 \quad y_{i,2020,k} \sim \text{Poisson}(\rho_{ik} \cdot \lambda_{ik1} \cdot \text{Pop}_{i,2020,k})$$

363 where  $\rho_{ik}$  represents the age-specific ratio between death rates in 2020 and the comparison  
364 period ( $\lambda_{ik1}$ ).

365

366 We modelled the ratio  $\rho_{ik}$  in a similar way to stage one using terms to account for both space  
367 and age:

$$368 \quad \log(\rho_{ik}) = \alpha_1 + \beta_{1k} + U_{1i} + V_{1i}. \quad (2)$$

369 Community variables were incorporated into this second stage log-linear model to evaluate  
370 their effect on the mortality rate ratio. For univariable effects we added the term  $\delta X_i$  where  $X_i$  is  
371 the quintile of the variable in the  $i$ -th MSOA and  $\delta$  is the associated effect. Similarly for the  
372 full multivariable model evaluating the joint effect of all variables we added  $\sum_j \delta_j X_{ij}$  with  
373  $j=1, \dots, 6$ .

374

375 To ensure uncertainty in the estimation of  $\lambda_{ik1}$  in stage 1 is expressed in stage 2, we drew 50  
376 samples from the posterior distribution of each  $\lambda_{ik1}$  and ran a stage 2 analysis fixing  $\lambda_{ik1}$  to  
377 each of these values in turn. For each of these 50 analyses we sampled 100 values from the  
378 posterior distribution of each  $\lambda_{ik2}$ . In this way we fully expressed the uncertainty resulting from  
379 the two stages of our analysis. For the neighbourhood variable effects, we report posterior mean  
380 and 95% credible intervals (2.5th to 97.5th percentiles) based on the 5,000 sampled values (50  
381 x 100). In addition, for each MSOA we report both excess deaths per 100,000 people and the  
382 percentage change in deaths, as described below.

383

### 384 **Excess deaths per 100,000 people**

385 We obtained the posterior distribution of the estimated number of deaths across ages for March  
386 – May 2020, calculated as  $\hat{y}_{i,2020} = \sum_k \lambda_{ik1} \times \rho_{ik} \times \text{Pop}_{i,2020,k}$ , and subtracted the

387 corresponding number for 2015-2019, calculated as  $\hat{y}_{i,2015-2019} = \sum_k \lambda_{ik1} \times Pop_{i,2015-2019,k}$ .  
388 This difference was then divided by the 2020 population over 40 years old in that MSOA and  
389 multiplied by 100,000. Fig. 3(A) shows the excess deaths in map form: the colour key on the  
390 maps is categorical such that all MSOAs with excess deaths above 500 per 100,000 are  
391 coloured darkest red.

392

### 393 **Percentage change in deaths**

394 We obtained the posterior distribution of the estimated number of deaths across ages for March  
395 – May 2020 as summed over the age groups, as  $\hat{y}_{i,2020} = \sum_k \lambda_{ik1} \times \rho_{ik} \times Pop_{i,2020,k}$  and  
396 divided by the corresponding number for 2015-2019 as  $\hat{y}_{i,2015-2019} = \sum_k \lambda_{ik1} \times$   
397  $Pop_{i,2015-2019,k}$ . We then subtracted 1 and multiplied by 100

398

399 We fitted the models using the Integrated Nested Laplace Approximation (INLA), through the  
400 R-INLA software package (<http://www.r-inla.org/>)<sup>48,49</sup>. We specified a minimally informative  
401 prior,  $\log\text{Gamma}(1, 0.1)$ , on the hyperparameters  $\tau_V$  and  $\tau_U$ .

402

403 As sensitivity analyses we re-ran the model using alternative priors for the hyperparameters  
404  $\tau_V$  and  $\tau_U$  firstly using  $\log\text{Gamma}(0.5, 0.05)$ , and secondly using the penalised complexity  
405 prior, as described by Moraga<sup>50</sup>. The results from these sensitivity analyses (Extended Data  
406 Table 7a and 7b) show little difference to the main model.

407

408 We carried out an analysis in which deaths in care homes were excluded (Extended Data  
409 Table 7c and 7d). Finally, we carried out an analysis in which deaths from both sexes were  
410 combined (Extended Data Table 7e).

411

### 412 **Ethics and governance**

413 The study was covered by national research ethics approval from the London-South East  
414 Research Ethics Committee (Reference 17/LO/0846). Data access was covered by the Health  
415 Research Authority Confidentiality Advisory Group under section 251 of the National Health  
416 Service Act 2006 and the Health Service (Control of Patient Information) Regulations 2002  
417 (Reference 20/CAG/0008).

418

419

## 420 **Data availability**

- 421 • No identifiable information will be shared with any other organisation. SAHSU does not  
422 have permission to supply data to third parties. Individual mortality data can be requested  
423 through the Office for National Statistics (<https://www.ons.gov.uk/>).
- 424 • Mid-year population estimates can be downloaded from  
425 [https://www.ons.gov.uk/peoplepopulationandcommunity/populationandmigration/populat](https://www.ons.gov.uk/peoplepopulationandcommunity/populationandmigration/populationestimates/datasets/middlesuperoutputareamidyearpopulationestimates)  
426 [ionestimates/datasets/middlesuperoutputareamidyearpopulationestimates](https://www.ons.gov.uk/peoplepopulationandcommunity/populationandmigration/populationestimates/datasets/middlesuperoutputareamidyearpopulationestimates).
- 427 • English Index of Multiple Deprivation data can be downloaded from  
428 <https://www.gov.uk/government/statistics/english-indices-of-deprivation-2019>.
- 429 • 2011 Census data can be downloaded from  
430 <https://www.ons.gov.uk/census/2011census/2011censusdata>.
- 431 • Modelled air pollution data (NO<sub>2</sub> & PM<sub>2.5</sub>) can be downloaded from [https://uk-](https://uk-air.defra.gov.uk/data/pcm-data)  
432 [air.defra.gov.uk/data/pcm-data](https://uk-air.defra.gov.uk/data/pcm-data).
- 433 • Locations data of care homes can be downloaded from  
434 [https://covid19.esriuk.com/datasets/e4ffa672880a4facaab717dea3cdc404\\_0](https://covid19.esriuk.com/datasets/e4ffa672880a4facaab717dea3cdc404_0).

435

## 436 **Code availability**

437 The computer code written in R<sup>51</sup> for the two stages of Bayesian models used in this work is  
438 available on request.

439

## 440 **Methods References**

441

- 442 43 McLennan, D. *et al.* The English Indices of Deprivation 2019: technical report.  
443 (2019).
- 444 44 Office for National Statistics. 2011 Census aggregate data. UK Data Service (2016).
- 445 45 Department for Environment Food and Rural Affairs. Modelled background pollution  
446 data. . (DEFRA., 2020).
- 447 46 Geolytix. Geolytix UK Care Homes 2020. (2020).
- 448 47 Besag J, Y. J., Mollie A. Bayesian image restoration with two applications in spatial  
449 statistics. *Annals of the Institute of Statistical Mathematics.* , 1-59 (1991).
- 450 48 Blangiardo, M. & Cameletti, M. *Spatial and spatio-temporal Bayesian models with R-*  
451 *INLA*. (John Wiley & Sons, 2015).



452 49 Rue, H., Martino, S. & Chopin, N. Approximate Bayesian inference for latent  
453 Gaussian models by using integrated nested Laplace approximations. *Journal of the*  
454 *royal statistical society: Series b (statistical methodology)* **71**, 319-392 (2009).  
455 50 Moraga, P. *Geospatial Health Data: Modeling and Visualization with R-INLA and*  
456 *Shiny*. (Chapman & Hall, 2019).  
457 51 R Core Team. A language and environment for statistical computing [Internet].  
458 Vienna, Austria: R Foundation for Statistical Computing; 2015. *Document freely*  
459 *available on the internet at: <http://www.r-project.org>* (2015)

460

### 461 **Acknowledgements**

462 We thank Hima Daby, Gajanan Natu and Eric Johnson for their assistance in data acquisition,  
463 storage, preparation and governance; Aubrianna Zhu for her work on the on-line interactive  
464 map; and the Office for National Statistics ([www.ons.gov.uk](http://www.ons.gov.uk)) for the provision of mortality  
465 data derived from the national mortality registrations.

466

467 P.E. is Director of the UK Small Area Health Statistics Unit. He acknowledges support from  
468 the Medical Research Council (MRC) for the MRC Centre for Environment and Health  
469 (MR/S019669/1); the British Heart Foundation Imperial College Centre for Research  
470 Excellence (RE/18/4/34215); National Institute for Health Research (NIHR) Imperial College  
471 Biomedical Research Centre (BRC); the NIHR Health Protection Research Unit (HPRU) on  
472 Environmental Exposures and Health (NIHR-200880); and the NIHR HPRU in Chemical and  
473 Radiation Threats and Hazards (NIHR-200922). P.E. is supported by Health Data Research  
474 UK (HDR UK) and the UK Dementia Research Institute at Imperial College London, which  
475 receives funding from the UK Medical Research Council, Alzheimer's Society and  
476 Alzheimer's Research UK (MC\_PC\_17114). P.E. also acknowledges support from the Huo  
477 Family Foundation for research into COVID-19.

478

479 J.B. and M.E are supported by Pathways to Equitable Healthy Cities grant from the Wellcome  
480 Trust (209376/Z/17/Z).

481

482 B.D acknowledges funding from the NIHR HPRU in Chemical and Radiation Threats and  
483 Hazards (NIHR-200922) and the HDR UK Hub DISCOVER-NOW.

484

485 All authors acknowledge infrastructure support for the Department of Epidemiology and  
486 Biostatistics provided by the NIHR Imperial BRC.

487

488 The views expressed are those of the authors and not necessarily those of the NIHR or the  
489 Department of Health and Social Care.

490

491 **Author contributions**

492 P.E and M.E conceived and supervised the study. B.D. and M.B. developed the initial study  
493 protocol. M.B. and J.B. developed the statistical model. D.F. prepared the denominator and  
494 covariate data. B.D. led the acquisition of identifiable data and study permissions. B.P.  
495 authored the computer code, performed the analysis and prepared the initial results. All authors  
496 contributed to the drafting of the paper and critical interpretation of results and approve the  
497 final version for publication.

498

499 **Competing interest declaration**

500 The authors declare no competing interests.

501

502 **Additional information**

503 Supplementary information is available for this paper.

504 Correspondence and requests for materials should be addressed to P.E.

505

506 **Figure legends**

507

508 **Fig. 1. Distributions of deaths by sex, age and place of death.** Study period: 1 March to 31  
509 May 2020. Comparison period: 1 March to 31 May 2015-2019.

510

511 **Fig. 2. Excess mortality (with 95% credible intervals) from 1 March to 31 May 2020**  
512 **compared to the same period for the preceding five years, for middle super output areas**  
513 **(MSOAs) in England.** (A) Excess deaths per 100,000 people aged 40 years and over in 2020  
514 compared to the average for the same period for the preceding five years. (B) Percent increase  
515 in death rates in 2020 compared to the average for the same period for the preceding five years.  
516 Colouring indicates the sum (by quintiles) of community characteristics of the MSOAs: %  
517 population on income support; population density; % population non-White; % population  
518 living in overcrowded homes; air pollution (NO<sub>2</sub> and PM<sub>2.5</sub>); care homes per 1,000 population.  
519 Inserts are histograms of the distribution of (A) excess deaths per 100,000 people aged 40 years  
520 and over, and (B) percent increase in death rates across MSOAs.

521

522 **Fig. 3. Maps of middle super output areas (MSOAs) in England showing excess deaths**  
523 **per 100,000 people aged 40 years and over.** (A) Excess deaths per 100,000 males  
524 (left)/females (right) from 1 March to 31 May 2020 compared to the same period for the  
525 preceding five years. (B) Posterior probability that excess deaths > 0. Community  
526 characteristics of the MSOAs were: % population on income support; population density; %  
527 population non-White; % population living in overcrowded homes; air pollution (NO<sub>2</sub> and  
528 PM<sub>2.5</sub>); care homes per 1,000 population. We map the posterior probability which measures  
529 the extent to which an estimate of excess/fewer deaths is likely to be a true increase/decrease.  
530 Where the entire posterior distribution of estimated excess deaths for an MSOA is greater than  
531 zero, there is a posterior probability of ~1 of a true increase, and conversely where the entire  
532 posterior distribution is less than zero there is a posterior probability of ~0 of a true increase.  
533 This posterior probability would be ~0.5 in an MSOA in which an increase is statistically  
534 indistinguishable from a decrease (Extended Data Table 3).

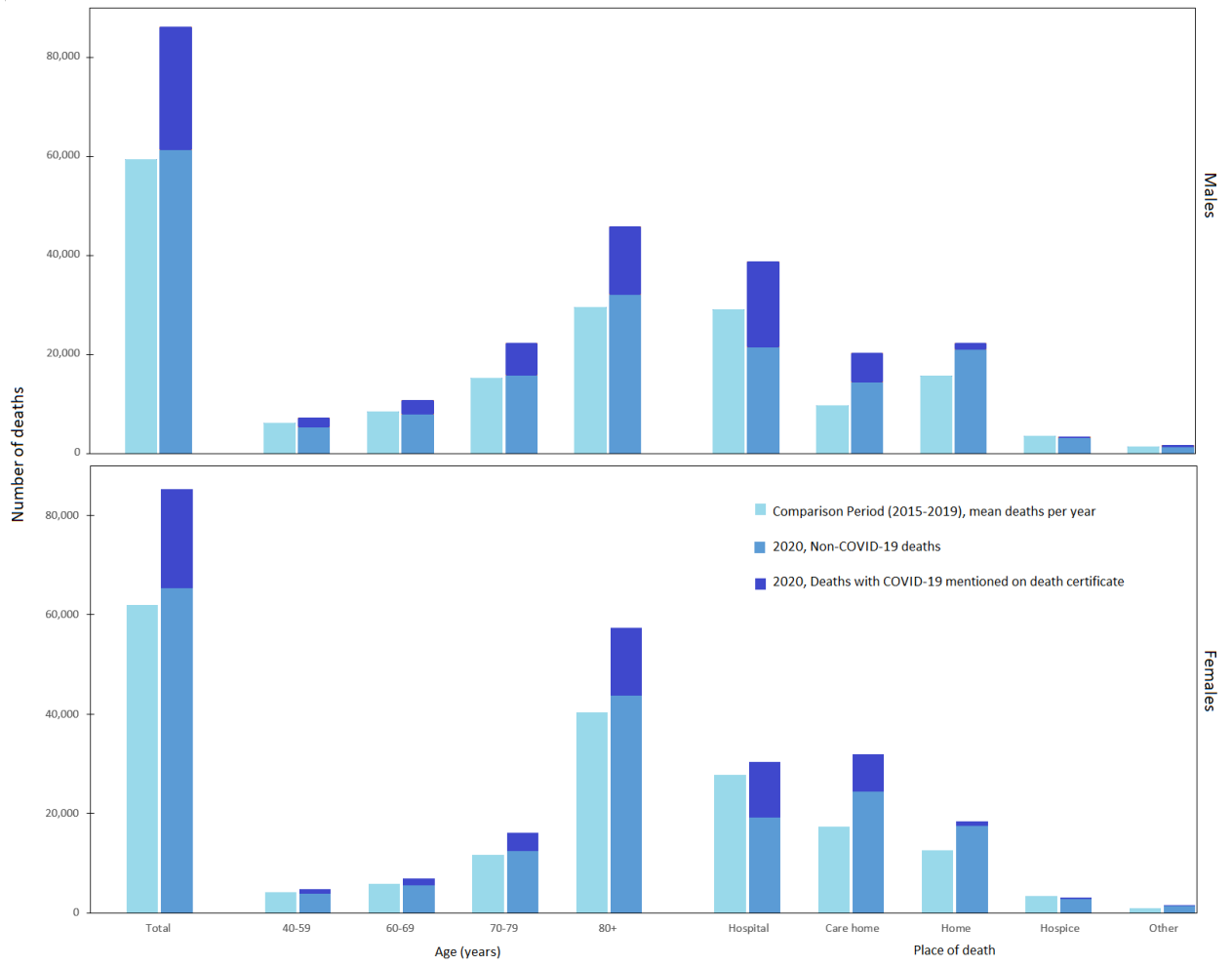
535

536 **Fig. 4. The relationship between community characteristics of middle super output areas**  
537 **(MSOAs) in England and excess mortality from 1 March to 31 May 2020 compared to**  
538 **the same period for the preceding five years.** (A) Univariable relationship between each  
539 characteristic and excess mortality; (B) Multivariable relationship between characteristic and  
540 excess mortality after adjustment for the other characteristics. Proportional increase in death

541 rates shown as rate ratios (with 95% credible intervals) for quintiles of the distributions relative  
542 to lowest quintile.  
543

544 **Fig. 1.**

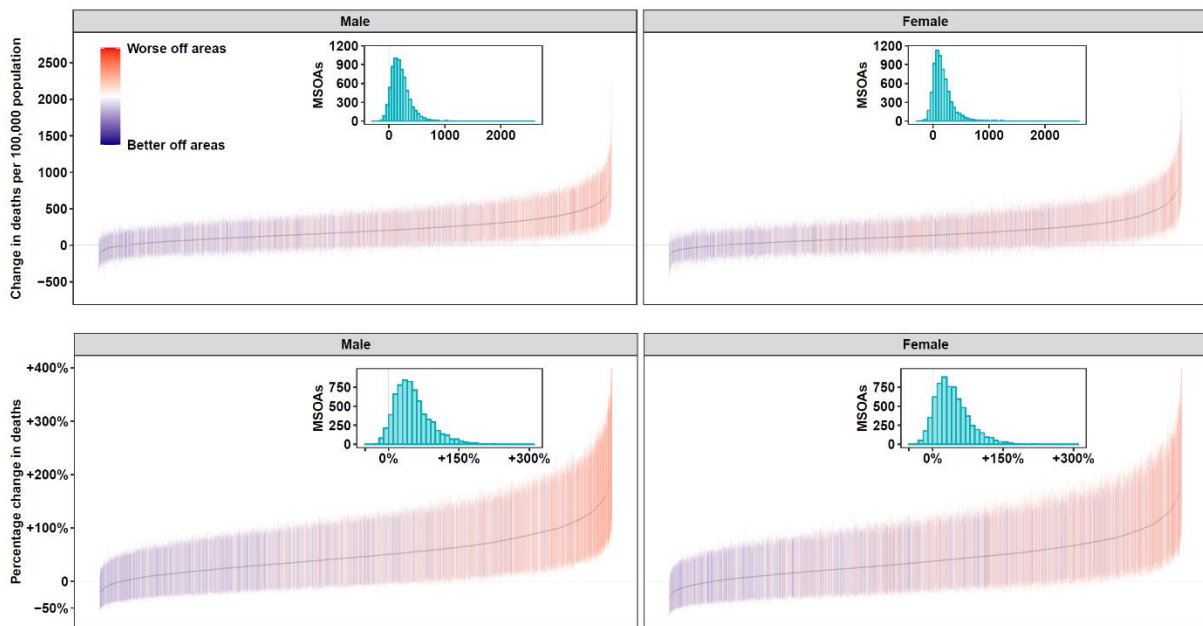
545



546

547 **Fig. 2.**

548

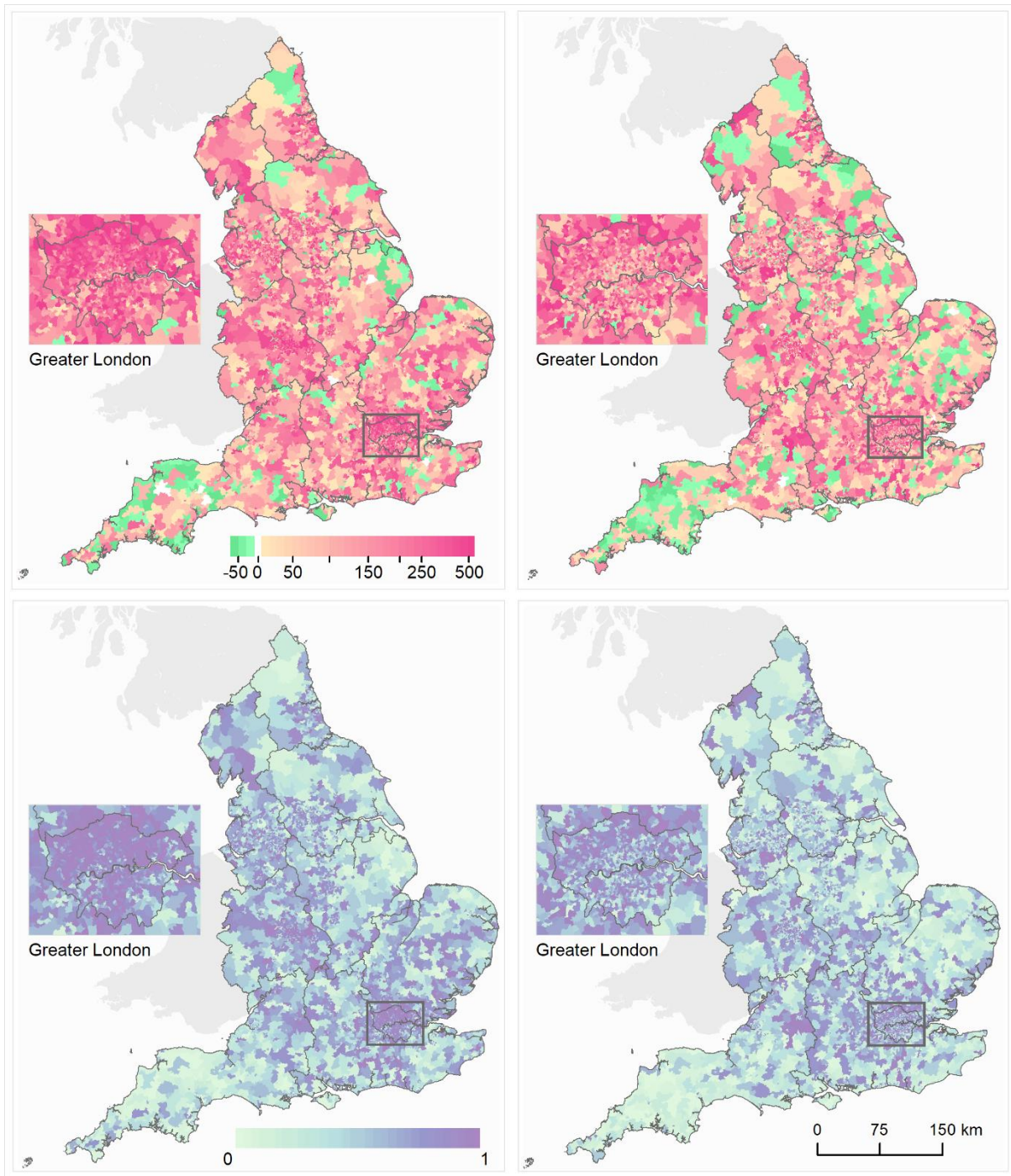


549

550

551 **Fig. 3.**

552



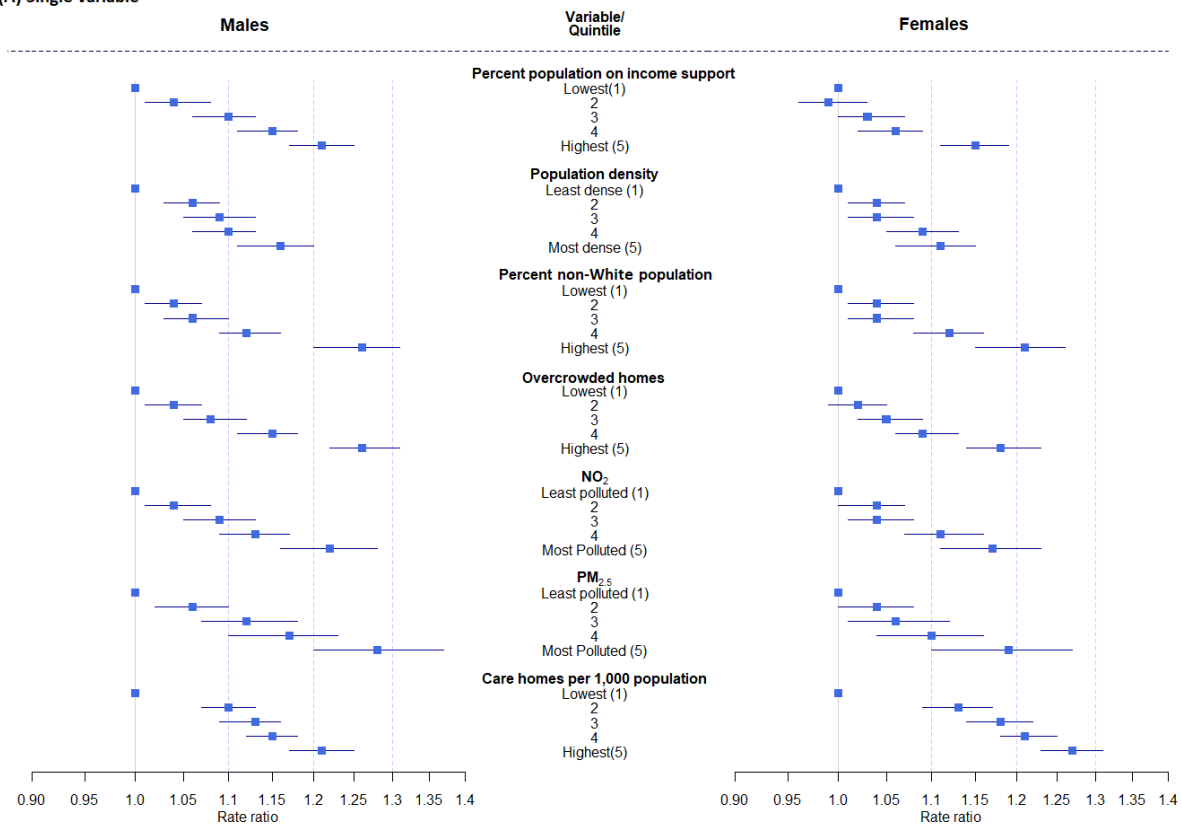
553

554

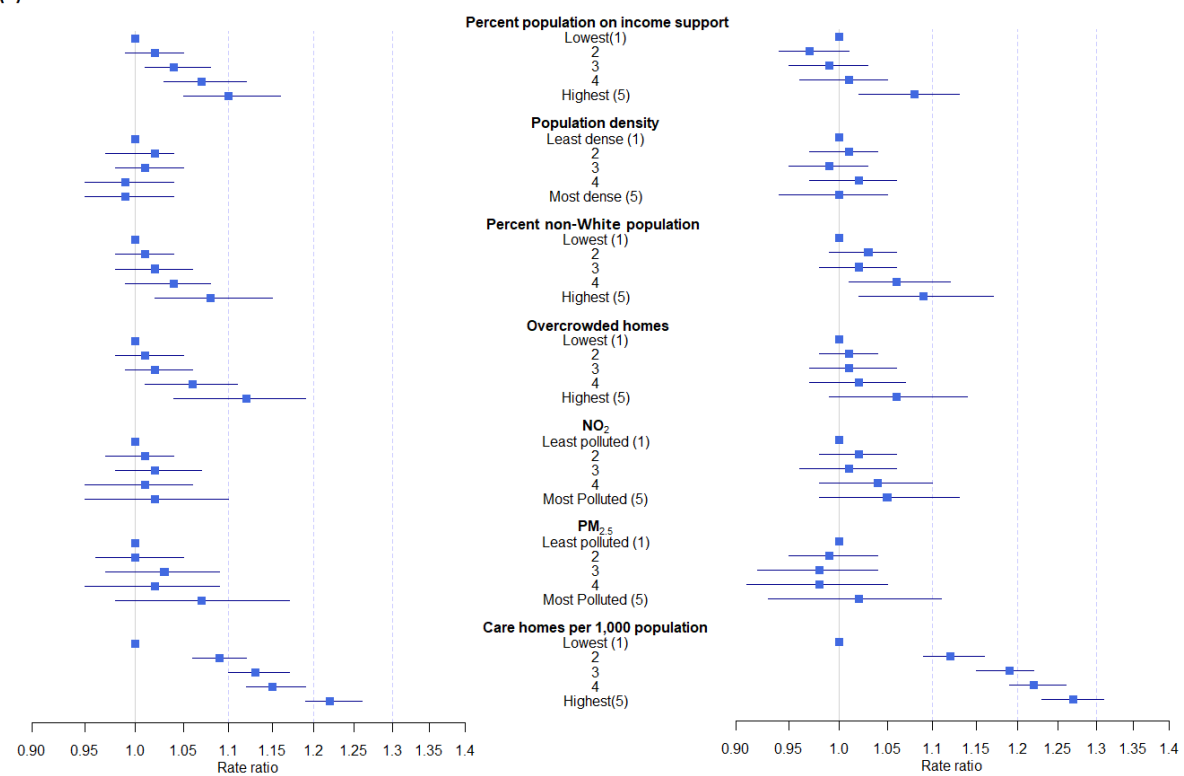
555 Fig. 4.

556

(A) Single variable



(B) All variables combined



557