

# The detection and stability of the SARS-CoV-2 RNA biomarkers in wastewater influent in Helsinki, Finland

*SARS-CoV-2 RNA detection and stability in wastewater*

Anna-Maria Hokajärvi<sup>1</sup>, Annastiina Rytönen<sup>1</sup>, Ananda Tiwari<sup>1</sup>, Ari Kauppinen<sup>1,†</sup>, Sami Oikarinen<sup>2</sup>, Kirsi-Maarit Lehto<sup>2</sup>, Aino Kankaanpää<sup>3</sup>, Teemu Gunnar<sup>3</sup>, Haider Al-Hello<sup>4</sup>, Soile Blomqvist<sup>4</sup>, Ilkka T. Miettinen<sup>1</sup>, Carita Savolainen-Kopra<sup>4</sup> and Tarja Pitkanen<sup>1,5\*</sup>

<sup>1</sup> Finnish Institute for Health and Welfare, Expert Microbiology Unit, Kuopio, Finland

<sup>2</sup> Tampere University, Faculty of Medicine and Health Technology, Tampere, Finland

<sup>3</sup> Finnish Institute for Health and Welfare, Forensic Toxicology Unit, Helsinki, Finland

<sup>4</sup> Finnish Institute for Health and Welfare, Expert Microbiology Unit, Helsinki, Finland

<sup>5</sup> University of Helsinki, Faculty of Veterinary Medicine, Dept. Food Hygiene and Environmental Health, Finland

<sup>†</sup> Current address: Finnish Food Authority, Laboratory and Research Division, Virology Unit, Helsinki, Finland

## \*Correspondence:

Tarja Pitkanen; telephone: +358 29 524 6315; email: [tarja.pitkanen@thl.fi](mailto:tarja.pitkanen@thl.fi)

## Abstract

Wastewater-based surveillance of the severe acute respiratory syndrome coronavirus 2 (SARS-CoV-2) is used to monitor the population-level prevalence of the COVID-19 disease. In many cases, due to lockdowns or analytical delays, the analysis of wastewater samples might only be possible after prolonged storage. In this study, the effect of storage conditions on the RNA copy numbers of the SARS-CoV-2 virus in wastewater influent was studied over time at cold storage temperatures using the reverse-transcription quantitative PCR (RT-qPCR) assays N2 and E-Sarbeco. For the first time in Finland, quantifiable numbers of SARS-CoV-2 RNA copies were detected in 24 h composite incoming wastewater samples collected from Viikinmäki wastewater treatment plant, Helsinki, Finland. The SARS-CoV-2 RNA counts of the wastewater sample aliquots taken during 19–20 April 2020 and stored for 29, 64, and 84 days remained surprisingly stable at 4°C, -20°C, and -75°C. The SARS-CoV-2 copy numbers in the stored samples seemed slightly higher when analyzed from the pre-centrifugation pellet—that is, the particulate matter of the influent—as compared with the supernatant (i.e., water fraction) used for ultrafiltration, although the difference was not statistically significant. With an N2 assay, on average the sample aliquots contained  $3.3 \pm 0.18$  and  $2.9 \pm 0.06$  SARS-CoV-2 RNA copies ( $\log_{10} \pm \text{SE } 100 \text{ ml}^{-1}$ ) in a pre-centrifugation pellet and supernatant ultrafiltrated, respectively. The corresponding numbers with an E-Sarbeco assay were  $3.2 \pm 0.24$  in the pellet and  $2.8 \pm 0.12$  in supernatant. Furthermore, when wastewater was spiked with SARS-CoV-2, linear decay at 4°C was observed on the first 28 days, while no decay was visible within 58 days at -20°C or -75°C. In conclusion, freezing temperatures should be used for storage when immediate SARS-CoV-2 analysis from the wastewater influent is not possible. Analysis of the particulate matter of the sample, in addition to the water fraction, can improve the detection frequency.

## 1 Introduction

Wastewater-based surveillance has been proposed for a rapid and resource-efficient way to monitor the population-level prevalence of severe acute respiratory syndrome coronavirus 2 (SARS-CoV-2), an etiological agent of the current global pandemic of coronavirus disease 2019 (COVID-19) (WHO, 2020; Ahmed *et al.*, 2020a; Lodder and de Roda Husman, 2020; Mallapaty, 2020; Medema *et al.*, 2020a; Orive *et al.*, 2020). The wastewater-based approach provides an effective way for identifying community-level hotspots of the infection and has been proposed as an early warning tool, providing extra time for actions to suppress the spread of infections before the availability of clinical surveillance information (La Rosa *et al.*, 2021; Kitajima *et al.*, 2020; Thompson *et al.*, 2020). During the spring and summer months of 2020, the analytical capacities to study the RNA copy numbers of the SARS-CoV-2 biomarkers from wastewater samples were limited due to the laboratory and campus lockdowns at many locations with remote work recommendations. Furthermore, the lack of required methodological resources and validated methods, as well as delays in the deliveries of laboratory reagents and supplies (like the delayed availability of the plasticware required for ultrafiltration) due to global shortage, hampered the immediate analysis of the SARS-CoV-2 RNA quantities from the collected wastewater samples. Subsequently, on many occasions, the researchers participating in wastewater-based surveillance efforts with the aim of contributing to the fight against COVID-19 have been forced to store the collected samples and wait for the analysis later on, when the required resources become available.

The previously stored samples are also needed in attempts to trace back to the first COVID-19 cases in different cities of the world. It has been claimed that the SARS-CoV-2 might have already circulated in many locations before the first reports from Wuhan, China, were received. Together with stored respiratory samples from patients (Deslandes *et al.*, 2020), bio-banked wastewater samples from previous years, like wastewater influents collected during the worldwide poliovirus monitoring (La Rosa *et al.*, 2021; Hovi *et al.*, 2012), could tentatively help epidemiologists to identify the first introduction of the virus in each country. Currently, after the summer months of the COVID-19 pandemic that had a very slow or stagnant phase in countries like Finland, the resources for the quantitation of SARS-CoV-2 RNA from wastewater are becoming more readily available. The analysis of stored samples is finally possible, although not all bottlenecks to analysis availability have been tackled completely and the immediate actions required to tackle the second wave of the COVID-19 pandemic might again slow down the analysis of the previously stored samples.

It is important to determine the effect of storage conditions on the reliability of the SARS-CoV-2 results as there is usually always a time lag between the sampling and the start of the laboratory examination due to the transportation and other logistical arrangements (Medema *et al.*, 2020a). So far, the persistence of SARS-CoV-2 in stored wastewater samples has only been studied at higher temperatures, 4°C, 15°C, 25°C, and 37°C (Ahmed *et al.*, 2020b). Furthermore, some stability information is obtained from other coronaviruses, like human coronavirus 229E (Gundy *et al.*, 2008) and SARS-CoV-1 (Wang *et al.*, 2005), or from surrogate organisms, such as murine hepatitis virus (MHV) (Casanova *et al.*, 2009; Ye *et al.*, 2016). This study aimed to establish the SARS-CoV-2 RNA stability characteristics in cold and freezing temperatures in order to evaluate the usability and reliability of the SARS-CoV-2 data gathered from previously collected and stored wastewater samples. To do this, we followed the decay of the SARS envelope gene by using an E-Sarbeco RT-qPCR assay (Corman *et al.*, 2020) and the decay of the SARS-CoV-2 nucleocapsid gene by using an N2 assay (Lu *et al.*, 2020) in wastewater influent aliquots stored at 4°C, -20°C, and -75°C over time. This is the first study reporting the detection of SARS-CoV-2 RNA from municipal wastewater in Finland.

## 2 Materials and Methods

### 2.1 Wastewater influent sampling and storage

Table 1 shows the characteristics of the wastewater influent samples collected from Viikinmäki wastewater treatment plant (WWTP), Helsinki, Finland.

**Table 1.** The characteristics of the wastewater influent at Viikinmäki WWTP, Helsinki, Finland. The data obtained from the WWTP and the national infectious disease register.

Sampling time	From 19.4.2020 07:00 to 20.4.2020 07:00	From 24.5.2020 07:00 to 25.5.2020 07:00
COVID-19 cases reported in the sewerage network area within the 14 days preceding the sampling event	1 076	409
Total inflow during sampling (m <sup>3</sup> /d)	306 019	251 741
Composite sampling interval (m <sup>3</sup> )	18.8	18.8
Influent temperature, °C (mean; min–max)	12.0; 10.4–13.2	13.3; 12.4–14.2
pH	7.4	na
BOD (mg/l)	205	247
COD (mg/l)	404	541
N <sub>tot</sub> (mg/l)	42	54
P <sub>tot</sub> (mg/l)	5.1	6.4
NH <sub>4</sub> -N (mg/l)	32	35

Abbreviations: na: not available; BOD: biochemical oxygen demand; COD: chemical oxygen demand; N<sub>tot</sub>: total nitrogen concentration; P<sub>tot</sub>: total phosphorus concentration; NH<sub>4</sub>-N: ammonium nitrate concentration.

The Viikinmäki WWTP serves the population of 860 000 inhabitants from the municipalities of Helsinki, Sipoo, Kerava, Tuusula, Järvenpää, Pornainen, Mäntsälä, and Vantaa. Samples were collected from the incoming channel before any treatment following the national guidance of biosafety precautions for WWTP personnel. Subsamples of 5 000 mL and 2 000 mL of 24-hour composite wastewater influent were collected from 6°C refrigerated 20 000 mL sample container during 19–20 April 2020 and 24–25 May 2020 respectively and transported to the laboratory in cool boxes within 24–26 hours. Upon arrival to the laboratory, the samples were divided into 30 ml aliquots and stored at temperatures of 4°C, -20°C, and -75°C for later analysis.

### 2.2 The ultrafiltration method for the detection of SARS-CoV-2 RNA in the stored samples

For testing the presence and stability of SARS-CoV-2 RNA, an influent sample from Viikinmäki WWTP, Helsinki, Finland was taken during 19–20 April 2020, divided to aliquots, and stored in the dark at temperatures of 4°C, -20°C, and -75°C. Frozen sample aliquots were thawed overnight at a temperature of 4°C before analyses.

Prior to ultrafiltration, two 30 ml aliquots were combined and larger particles were removed from triplicate 60 ml influent samples with pre-centrifugation at 4654 g for 30 min without brake as previously described (Medema *et al.*, 2020b). Then, the supernatants obtained (57–59 ml) were concentrated using Centricon Plus-70 centrifugal filters (a 10K device, UFC701008, Millipore Corporation). Before use, the ultrafilters were washed with sterile deionized water, following the manufacturer's instructions. The ultrafiltration was conducted at 3000 g for 25 min, followed by concentrate collection with 1000 g for 2 min, producing approximately 400 µL of concentrate. The concentrate volume was normalized to 700 µL for all samples by suspending with the filtrate. All treatment steps were carried out at room temperature. Immediate nucleic acid extraction was

conducted using 300 µL of the final concentrated sample while the rest of the concentrate was preserved at -75°C for later use.

The detection and quantitation of the viral targets in the influent from Viikinmäki, Helsinki, was performed after storage of samples for 29, 64, and 84 days. In addition to the filtrated supernatant, the pellets from the suspended solids removal step (pre-centrifugation) were analyzed from the samples after 84 days of storage. The analysis entailed the determination of the RNA copy numbers of SARS Betacoronavirus with an E-Sarbeco assay (Corman *et al.*, 2020) and of SARS-CoV-2 with an N2 assay (Medema *et al.*, 2020b; Lu *et al.*, 2020). Also, the RNA copy numbers of norovirus GII (Kauppinen and Miettinen 2017) were analyzed.

### **2.3 The decay of SARS-CoV-2 RNA in wastewater stored at cold temperatures**

The decay characteristics of SARS-CoV-2 RNA were studied at the time points of 0, 3, 7, 10, 14, and 21 days after the start of the experiment after they had been stored at the temperatures 4°C, -20°C, and -75°C. Additionally, the effect of long-term storage was tested at 4°C after 28 days and at -20°C and -75 °C after 58 days. To reach sufficiently high RNA copy numbers for the experiment, the Viikinmäki WWTP composite wastewater influent sample taken during 24–25 May 2020 was spiked with a 1:1000 dilution of SARS-CoV-2 inoculum prepared from the nasopharyngeal swab of a COVID-19 patient. The produced spiked wastewater influent was divided into 57 microcentrifuge tubes in portions of 300 µl. Triplicate tubes were stored in the dark at temperatures of 4°C, -20°C, and -75°C and taken to direct nucleic acid extraction and subsequent reverse transcriptase-quantitative PCR (RT-qPCR) analysis. Frozen samples were thawed on ice before the analysis. The numbers of SARS Betacoronavirus RNA copies were quantified with an E-Sarbeco assay. The specificity of the E-Sarbeco assay was confirmed by Sanger sequencing of the selected PCR products. The presence and quantitation of SARS-CoV-2 in the sample material was confirmed using the N2 assay.

### **2.4 Nucleic acid extraction and the RT-qPCR of the viral targets**

For nucleic acid extraction, a Chemagic Viral300 DNA/RNA extraction kit was used with a Chemagic-360D semi-automated nucleic acid extraction instrument (Perkin-Elmer, USA). For inactivation, 300 µl of Lysis Buffer 1 and 300 µl of the sample (concentrate) were mixed and incubated in room temperature for at least 10 minutes. Poly(A) RNA and Proteinase K were added into the lysates and the extraction protocol was executed according to the manufacturer's instructions.

The RT-qPCR assays were performed using a QuantStudio 6 Flex real-time PCR system (Applied Biosystems, ThermoFisher Scientific). For SARS Betacoronavirus quantitation with an E-Sarbeco assay targeting envelope protein (Corman *et al.*, 2020), RT-qPCR reactions were carried out in a final volume of 25 µl, containing a 5 µl RNA sample, 0.4 µM primers, a 0.2 µM probe, and 6.25 µl TaqMan Fast Virus 1-step Master Mix (Applied Biosystems, ThermoFisher Scientific). For SARS-CoV-2, an N2 assay targeting nucleocapsid protein (Medema *et al.*, 2020b; Lu *et al.*, 2020) was conducted in the same manner except that both primers and probe were used in a final concentration of 0.2 µM. For both assays, the thermal cycling conditions were as follows: 50°C for 5 min for reverse transcription, followed by 95°C for 20 s, and then 45 cycles of 95°C for 15 s and 58°C for 1 min. All the reactions considered positive exhibited Ct value below 40. The RNA copy numbers of norovirus GII were quantified from the samples using RT-qPCR, as previously described (Kauppinen and Miettinen, 2017).

For quantitation of the RT-qPCR targets, standard curves for each run were generated by using serial dilutions of control materials with a known quantity. In the E-Sarbeco assay and N2 assay, control plasmids pEX-A128-nCoV\_E\_Sarbeco (Eurofins, Luxembourg) and 2019\_nCoV\_N Positive Control (IDT, USA) were used respectively. Before use, the pEX-A128-nCoV\_E\_Sarbeco

plasmid (100 ng  $\mu\text{l}^{-1}$ ) was digested with FastDigest *NotI* (ThermoScientific, USA) and purified using Illustra GFX PCR DNA and a Gel Band Purification Kit (GE Healthcare, UK) according to the manufacturer's instructions. For the N2 assay, the plasmid was used without linearization following the manufacturer's instructions. The quantitation of the norovirus GII assay was done using an artificial gene fragment (gBlocks, IDT).

## 2.5 Confirmation of the SARS-CoV-2 target by sequencing

The selected PCR products from E-Sarbeco assay were run by gel electrophoresis and approximately 113 bp long bands were cut from the gel. The purification was done using a QIAquick Gel Extraction Kit (Qiagen, Germany) and, further, the sequencing was done in both directions by ABI BigDye™ v3.1 Chemistry (Applied Biosystems, USA) according to the manufacturer's protocol. The sequences were verified and aligned using Geneious 11.1.3 (Biomatters Ltd, New Zealand). The pair-end gene sequence of the E gene PCR product generated from a spiked wastewater sample was:  
ACTTCTTTTTCTTGCTTTCGTGGTATTCTTGCTAGTTACACTAGCCATCCTTACTGCGCTT  
CGAT. The consensus sequence was identified using BLAST analysis (<https://blast.ncbi.nlm.nih.gov/Blast.cgi>).

## 2.6 Safety measures, quality assurance, and controls

To ensure the safety of the laboratory work, wastewater and patient samples were processed as pair-work in a level 2 biosafety cabinet using cuffs, double gloves, and a laboratory coat. Only airtight sealed tubes were handled outside the biosafety cabinet. Seventy per cent ethanol was sprinkled on the outer surfaces of the tubes and airtight rotor lids and also used during the opening of the centrifuge lid after a one- to two-minute waiting time following the centrifugation in order to prevent possible aerosols from entering into the air. To estimate the recovery efficiency of the ultrafiltration method, mengovirus was used as an internal process control following the principles of technical specification ISO/TS 15216-1:2013. Spiked mengovirus strain VMC0 (ATCC VR-1597, CeeramTOOLS, France) was used. The obtained recovery efficiencies for the mengovirus process control were considered sufficient.

Each RNA extraction set included reagent blanks (300  $\mu\text{l}$  PBS or sterile deionized water) and a SARS-CoV-2 positive process control (300  $\mu\text{l}$  of 1:500 diluted nasopharyngeal swab sample from a COVID-19 positive patient, dissolved into PBS and inactivated at 60°C for 90 min). In RT-qPCR, standard curves and no template controls were included in each run. The actual wastewater volume analyzed for each PCR assay (mL) was 3.8–4.0 mL for the authentic samples analyzed using the Centricon Plus-70 concentration method and 0.07 mL in the inoculation experiment with direct extraction. Where possible, extracted RNA samples and their ten-fold dilutions were analyzed in duplicate. Ten-fold diluted samples were used to estimate the presence of inhibition: inhibition was considered significant if the gene copy number detected from the diluted sample was two times higher than the gene copy number detected from the undiluted sample. When applicable, the average results from both the diluted and undiluted sample were used to generate the final data.

## 2.7 Statistics

The viral RNA copy numbers were log-transformed into  $\log_{10}$  before statistical analysis. The standard error with a 95% confidence interval was calculated with the following formula:

$$SE (95\% \text{ Confidence Interval}) = \frac{\sigma}{\sqrt{n}} * t,$$

where  $\sigma$  is a standard deviation,  $n$  is the number of samples, and  $t$  is a critical value at the probability level of 0.025 (two-tailed) from a  $t$ -distribution table at  $(n-1)$  degrees of freedom.

The differences between the SARS-CoV-2 RNA numbers in samples stored at the different temperatures were compared with the Kruskal-Wallis test followed with the Dunn post hoc test. The overlapping upper and lower confidence interval of mean RNA copy numbers from E-Sarbeco and N2 assays generated from pellet and supernatant fractions were compared, as previously described (Tiwari *et al.*, 2019).

The decay characteristics at the storage temperatures were analyzed with the GInaFiT Version 1.7 (Geeraerd and Van Impe Inactivation Model Fitting Tool) freeware add-in for Microsoft® Office 365® Excel (Geeraerd *et al.*, 2005), as done earlier (Tiwari *et al.*, 2019). In the GInaFiT tool, the regression analysis was performed ( $\log_{10}(N_t)$  vs. time) for each viral target including the prediction of times needed for 90% and 99% reduction at the storage temperatures in the wastewater influent, as previously described by Casanova *et al.* (2009). Statistical analysis was done using IBM SPSS statistics.

### 3 Results

The SARS-CoV-2 and norovirus GII RNA copies were detected from the wastewater sample collected during 19–20 April 2020 from the Viikinmäki WWTP, Helsinki, Finland, and stored at 4°C, -20°C, and -75°C. The quantity of SARS-CoV-2 RNA enumerated with E-Sarbeco and N2 assays remained stable at all storage temperatures for up to 84 days (Table 2).

**Table 2.** The mean copy numbers of virus RNA markers (mean ± standard error,  $\log_{10}$  genome copies 100 ml<sup>-1</sup>) detected with Beta-coronavirus E-Sarbeco, SARS-CoV-2 N2 and norovirus GII assays in Viikinmäki WWTP influent wastewater sample taken 19–20 April 2020 and stored over 84 days at 4°C, -20°C, and -75°C. The analysis at each time and temperature point was performed from triplicate aliquots. The number of replicates with results above the quantification limit (LOQ) are shown in parenthesis.

Target	Sample fraction	Storage time (days)	RNA concentration at storage temperatures			Quantification frequency (number of aliquots)
			4°C	-20°C	-75°C	
SARS E-Sarbeco	Supernatant	29	2.6 ± 0.2 (2)	< LOQ (0)	2.4 (1)	Supernatant: 16/27 (59%) Pellet: 7/9 (78%)
		64	3.1 ± 0.2 (3)	2.8 ± 0.2 (3)	2.8 ± 0.0 (2)	
		84	2.9 ± 0.3 (2)	2.5 (1)	2.8 ± 0.3 (2)	
	<i>Total mean ± SE (95% CI): 2.8 ± 0.1</i>					
	Pellet*	84	3.4 ± 0.2 (3)	2.8 ± 0.5 (2)	3.3 ± 0.0 (2)	
SARS-CoV-2 N2	Supernatant	29	3.0 ± 0.1 (2)	2.8 ± 0.1 (2)	2.9 ± 0.1 (2)	Supernatant: 19/27 (70%) Pellet: 8/9 (89%)
		64	3.0 ± 0.1 (3)	3.0 ± 0.1 (2)	3.0 ± 0.1 (2)	
		84	3.0 ± 0.1 (2)	2.7 (1)	2.9 ± 0.2 (3)	
	<i>Total mean ± SE (95% CI): 2.9 ± 0.1</i>					
	Pellet*	84	3.5 ± 0.1 (3)	3.2 ± 0.1 (2)	3.2 ± 0.4 (3)	
Norovirus GII	Supernatant	29	4.4 ± 0.2 (3)	4.8 ± 0.1 (3)	4.8 ± 0.1 (3)	Supernatant: 27/27 (100%) Pellet: 8/9 (89%)
		64	3.7 ± 0.1 (3)	3.7 ± 0.1 (3)	3.8 ± 0.0 (3)	
		84	3.5 ± 0.1 (3)	3.6 ± 0.3 (3)	3.7 ± 0.1 (3)	
	<i>Total mean ± SE (95% CI): 4.0 ± 0.2</i>					
	Pellet*	84	3.8 ± 0.2 (3)	3.0 ± 0.1 (2)	3.0 ± 0.1 (3)	
<i>Total mean ± SE (95% CI): 3.3 ± 0.3</i>						

\* The analysis is performed for the particulate fraction (i.e., pellets from pre-centrifugation).

At the same time, norovirus GII RNA numbers reduced about 1- $\log_{10}$  during the time interval between 29 and 84 days of storage. The RNA copies of SARS-CoV-2 were slightly more frequently

quantified with higher total mean counts from the pellet fraction of the samples stored for 84 days, that is, the particulate matter from the pre-centrifugation step, rather than from ultrafiltered supernatant fraction (Table 2, E-Sarbeco and N2 assays). At the same time, with a different virus type and norovirus GII used as a reference, the target mean difference in the quantified copy numbers between the pellet and supernatant fractions was the opposite.

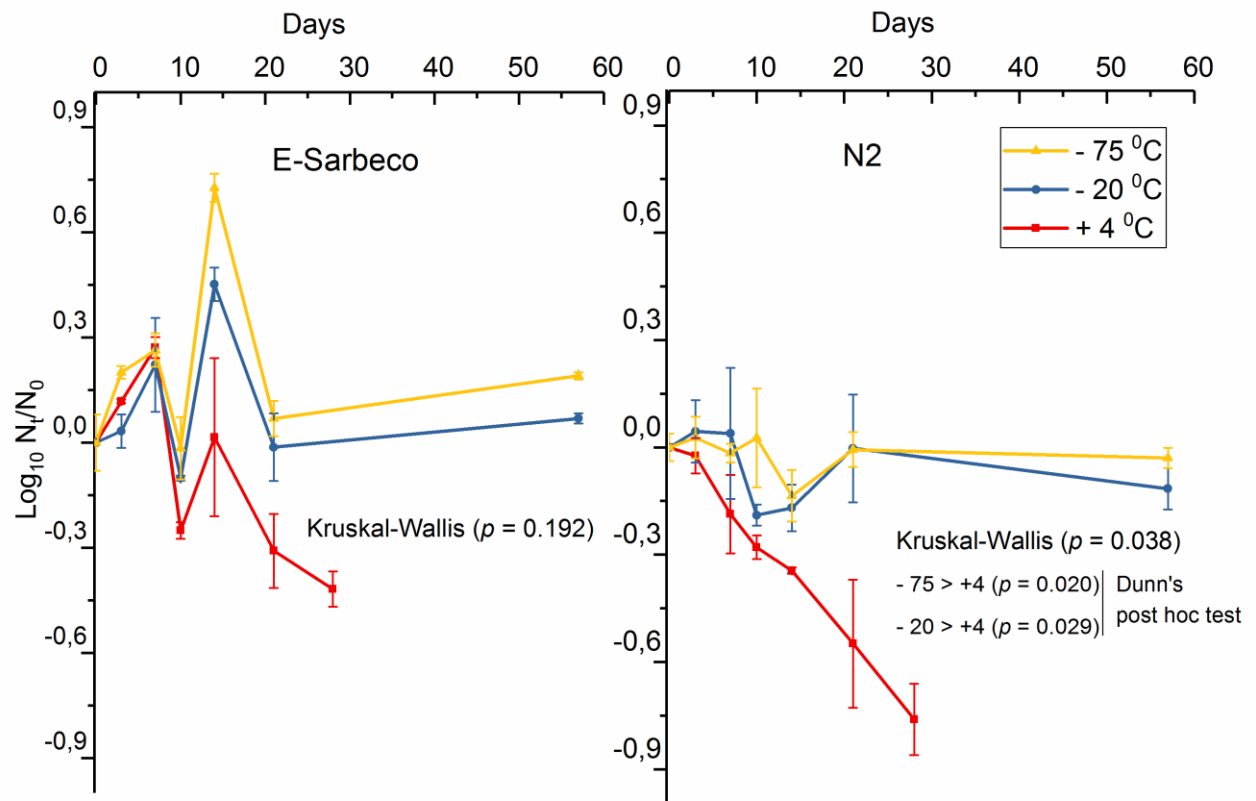
The RNA copy numbers from days 0–28 remained unknown for the sample taken 19–20 April 2020 (Table 2) since during that time the method for the immediate analysis of the viral biomarkers from influent samples was not available. Therefore, a Viikinmäki WWTP influent wastewater sample taken five weeks later, during 24–25 May 2020, was used to experimentally characterize the decay rate of SARS-CoV-2 RNA copy numbers during the first month of the cold storage of wastewater. Before spiking, the sample contained the target RNA of the levels 3.0 and 3.1 ( $\log_{10}$  genome copies  $100 \text{ ml}^{-1}$ ) when analyzed using E-Sarbeco and N2 assays respectively. After a spike with a nasopharyngeal swab from a COVID-19 patient, the copy numbers of the RNA targets in the beginning of the experiment reached the level of 7.4 ( $\log_{10}$  genome copies  $100 \text{ ml}^{-1}$ ) on both assays.

When the E-Sarbeco assay was used, no statistically significant difference between the storage temperatures was noted (Figure 1,  $p = 0.192$ , Kruskal-Wallis), although after two weeks of storage and thereafter, the sample aliquots stored at freezing temperatures ( $-20^{\circ}\text{C}$  and  $-75^{\circ}\text{C}$ ) seemed to produce higher quantities than refrigeration ( $4^{\circ}\text{C}$ ). When the N2 assay was used, a statistically significant difference between the storage temperatures was observed (Figure 1,  $p = 0.038$ , Kruskal-Wallis). A linear decay of SARS-CoV-2 was observed at  $4^{\circ}\text{C}$  while no decay was visible within 58 days at the freezing temperatures of  $-20^{\circ}\text{C}$  and  $-75^{\circ}\text{C}$  (Figure 1). Regression analysis, calculated with GInaFiT, was done for the sample aliquots stored at  $4^{\circ}\text{C}$  (Table 3). The decay was more linear and slightly faster when N2 was used as a target ( $R^2 = 0.99$ ) when compared to E-Sarbeco assay results ( $R^2 = 0.59$ ).

**Table 3.** The decay characteristics of the SARS-CoV-2 spike ( $\log_{10}$  copies  $100 \text{ ml}^{-1}$ ) in wastewater influent at  $4^{\circ}\text{C}$ , enumerated with E-Sarbeco and N2 assays. Samples stored at  $-20^{\circ}\text{C}$  and  $-75^{\circ}\text{C}$  were not suitable for decay modeling as no decay was observed.

Assay	Decay Rate (k)	$R^2$	Square Difference	$T_{50}$ (days)	$T_{90}$ (days)	$T_{99}$ (days)
E-Sarbeco	$0.04 \pm 0.2$	0.59	0.15	16	52	105
N2	$0.06 \pm 0.0$	0.99	0.00	11	36	73

**Figure 1.** The decay curve of SARS-CoV-2 spike ( $\log_{10}$  copies  $100 \text{ ml}^{-1}$ ) in wastewater influent at  $4^{\circ}\text{C}$ ,  $-20^{\circ}\text{C}$ , and  $-75^{\circ}\text{C}$ , enumerated with E-Sarbeco and N2 RT-qPCR assays.



#### 4 Discussion

This is the first study reporting the detection of SARS-CoV-2 RNA in sewage influent in Finland. The presence of the RNA markers of SARS-CoV-2 in wastewater influent samples collected during April and May 2020 from Viikinmäki WWTP, Helsinki, Finland, is in agreement with the national infectious disease register data regarding the confirmed COVID-19 cases in the municipalities of the Viikinmäki WWTP sewerage network area preceding the sampling and with studies conducted earlier in other countries (e.g., Ahmed *et al.*, 2020a; Haramoto *et al.*, 2020; La Rosa *et al.*, 2020a; Medema *et al.*, 2020b; Mlejnkova *et al.*, 2020; Arora *et al.*, 2020). In the sample aliquots stored at  $4^{\circ}\text{C}$ ,  $-20^{\circ}\text{C}$ , and  $-75^{\circ}\text{C}$  and analyzed after storage herein, the SARS-CoV-2 RNA seemed surprisingly stable in these cold storage temperatures over 29, 64, and 84 days prior to carrying out the sample concentration and nucleic acid extraction. Further, the results generated by spiking the wastewater influent matrix with a diluted nasopharyngeal swab sample from a COVID-19 patient and following the RNA signal over 28 and 58 days in refrigerated and freezing conditions respectively confirmed the stability of SARS-CoV-2 RNA, especially when stored in freezing temperatures.

Environmental microbiologists all over the world are currently reporting their methodological findings related to SARS-CoV-2 enumeration from wastewater. As the research area of COVID-19 wastewater-based epidemiology is developing fast, the protocols vary a lot despite the multiple efforts to harmonize the virus concentration and quantitation approaches (Hill *et al.*, 2020; Kitajima *et al.*, 2020). Methodological development and validation are indeed needed since SARS-CoV-2 is an enveloped virus, while previously analyzed viruses in water are most commonly non-enveloped viruses, such as poliovirus, norovirus, adenovirus, or enterovirus. Overall, the performance testing of the SARS-CoV-2 RNA quantitation from wastewater samples is important (Kordatou *et al.*,



2020). As the aim is to detect the virus at low concentrations in sewage, the efficiency of the procedures employed for sampling, preserving, and processing samples are critical (Medema *et al.*, 2020a) and there is a need for developing standardized and reliable virus quantification protocols (Orive *et al.*, 2020).

Interestingly, while the SARS-CoV-2 RNA marker remained almost stable at 4°C, -20°C, and -75°C when the wastewater influent was stored up to 84 days, norovirus reduced by about 1 log<sub>10</sub> value during the same time. This observation indicates that (actually against the current belief; Hill *et al.*, 2020) the persistency of non-enveloped viruses is not necessarily higher than the persistence of enveloped viruses in cold environmental conditions. Based on previous reports, it is known that coronaviruses decline rapidly at ambient temperatures in wastewater (Ahmed *et al.*, 2020b; Gundy *et al.*, 2008; La Rosa *et al.*, 2020b; Silverman and Boehm, 2020). Wang *et al.* (2005) recovered Sars-CoV-1 after at least 14 days in wastewater stored at 4°C while they reported it surviving only two days at 20°C. Ye *et al.* (2016) concluded that, with MHV surrogate, the inactivation kinetics of the enveloped viruses are significantly slower in wastewater at 10°C compared to 25°C. Previously, with surrogate coronaviruses, transmissible gastroenteritis, and MHV, Casanova *et al.* (2009) concluded that at 4°C there was a <1 log<sub>10</sub> infectivity decrease for both viruses after four weeks. More recently, Ahmed *et al.* (2020b) reported that, by using an N1 gene target for SARS-CoV-2 RNA in untreated wastewater, the mean first-order decay rate constant (*k*) for SARS-CoV-2 was 0.084/day at 4°C. In the present study, SARS-CoV-2 RNA copy numbers exhibited a linear decay with a *k* value of 0.04 and 0.06 for N2 and E-Sarbeco gene targets in wastewater respectively over 21 days when stored at 4°C. On the contrary, the RNA count in Viikinmäki WWTP influent remained unchanged over 58 days in the wastewater influent stored at -20°C and -75°C. Overall, the inactivation of coronaviruses in the wastewater seems highly dependent on temperature. However, between the samples and sampling locations, the level of organic matter, and the presence of other microbes could affect the persistence.

Among the two biomarker assays employed herein, the RNA markers quantified using the N2 assay exhibited a slightly higher decay rate than the marker numbers obtained using the E-Sarbeco assay. The slightly more rapid decay of the N2 assay target compared with the E-Sarbeco assay target may indicate the differential decay rates of nucleocapsid and envelope genes (Mousavizadeh and Ghasemi, 2020). More information is needed on the stability of different marker genes used for wastewater-based SARS-CoV-2 surveillance. Overall, the information about the fate of enveloped viruses in municipal wastewater has been scarce. When Ye *et al.* (2016) studied the survival and partitioning behavior of model viruses in raw wastewater samples, up to 26% of the enveloped MHV and *Pseudomonas* phage  $\phi$ 6 viruses adsorbed to the solid fraction of wastewater compared with 6% of the non-enveloped bacteriophages (MS2 and T3). Although more research is needed, SARS-CoV-2 in WWTP influent could also be associated with the particulate fraction of the sample. It is noteworthy that the ultrafiltration method commonly used for wastewater SARS-CoV-2 analysis includes a pre-centrifugation step, wherein part of the particulate fraction is removed from the analysis (Medema *et al.*, 2020b). When we used the ultrafiltration method for the Viikinmäki WWTP samples stored for 84 days at 4°C, -20°C, and -75°C, the quantities of SARS-CoV-2 RNA biomarkers were slightly higher when analyzed from pre-centrifugation pellets rather than from the water fraction without the particulate matter. From the same samples, the copy numbers of the norovirus RNA were on average higher when analyzed from supernatants when compared with pellets. The finding may indicate the higher affinity of an enveloped virus like SARS-CoV-2 to attach onto the particulate matter of wastewater when compared with non-enveloped viruses like norovirus. Indeed, instead of only studying wastewater influent, research groups have recently reported SARS-CoV-2 detection in sewage sludge, proposing that the sludge could serve as a better indicator for COVID-19 outbreak dynamics than WWTP influent (Kocamemi *et al.*, 2020; Peccia *et al.*, 2020).

## 5 Conclusions

- SARS-CoV-2 RNA was detected for the first time in the 24 h composite incoming wastewater sample collected from Viikinmäki WWTP, Helsinki, Finland, during 19–20 April 2020.
- The SARS-CoV-2 RNA remained detectable during storage periods of 29, 64, and 84 days at 4°C, -20°C, and -75°C when analyzed using E-Sarbeco and N2 RT-qPCR assays.
- The SARS-CoV-2 marker numbers were slightly higher when the particulate matter of the influent was analyzed, compared with the pre-centrifuged supernatant fraction used for ultrafiltration.
- A linear decay of spiked SARS-CoV-2 was observed at 4°C while no decay was visible within 58 days at the freezing temperatures.
- In cases when immediate SARS-CoV-2 analysis from the wastewater influent is not possible, storage at -20°C or -75°C should be preferred.
- In the sample pre-treatment procedures for ultrafiltration, the pellet from the initial larger particle removal step should not be discarded when the samples are analyzed after long-term storage.

### Declaration of competing interest

The authors declare that they have no known competing financial interests or personal relationships that could have influenced the work reported in this paper.

### Acknowledgements

The authors would like to express special thanks to the personnel of Helsinki Region Environmental Services Authority HSY and Director Mari Heinonen at the HSY Wastewater Services Department for their support during the project's establishment and WWTP sampling arrangements. The personnel of the Health Security Department at the Finnish Institute for Health and Welfare are acknowledged with special thanks given to Oskari Luomala and Riikka Airaksinen for their help with the communicable disease statistics and to Tiina Heiskanen, Marjo Tiittanen, Tarja Rahkonen and Arja Moilanen for their assistance in the laboratory. This study was supported by Finnish Government supplementary budget for Covid-19 research and the Ministry of Agriculture and Forestry (grant number 4400T-0807).

## References

1. Ahmed, W., Angel, N., Edson, J., Bibby, K., Bivins, A., O'Brien, J.W., Choi, P.M., Kitajima, M., Simpson, S.L., Li, J., Tschärke, B., Verhagen, R., Smith, W.J.M., Zaugg, J., Dierens, L., Hugenholtz, P., Thomas, K.V., Mueller, J.F., 2020a. First confirmed detection of SARS-CoV-2 in untreated wastewater in Australia: A proof of concept for the wastewater surveillance of COVID-19 in the community. *Sci. Total Environ.* 728, 138764. Doi:10.1016/j.scitotenv.2020.138764.
2. Ahmed, W., Bertsch, P.M., Bibby, K., Haramoto, E., Hewitt, J., Huygens, F., Gyawali, P., Korajkic, A., Riddell, S., Sherchan, S.P., Simpson, S.L., Sirikanchana, K., Symonds, E.M., Verhagen, R., Vasani, S.S., Kitajima, M., Bivins, A., 2020b. Decay of SARS-CoV-2 and surrogate murine hepatitis virus RNA in untreated wastewater to inform application in wastewater-based epidemiology. *Environ Res.* 2020, 110092. Doi:10.1016/j.envres.2020.110092.
3. Arora, S., Nag, A., Sethi, J., Rajvanshi, J., Saxena, S., Shrivastava, S.K., Gupta, A.B., 2020. Sewage surveillance for the presence of SARS-CoV-2 genome as a useful wastewater based epidemiology (WBE) tracking tool in India. *medRxiv* (preprint). Doi:10.1101/2020.06.18.20135277.thi.
4. Casanova, L., Rutala, W.A., Weber, D.J., Sobsey, M.D., 2009. Survival of surrogate coronaviruses in water. *Water Res.* 43 (7), 1893–1898. Doi:10.1016/j.watres.2009.02.002.
5. Corman, V.M., Landt, O., Kaiser, M., Molenkamp, R., Meijer, A., Chu, D.K.W., Bleicker, T., Brünink, S., Schneider, J., Schmidt, M.L., Mulders, D.G.J.C., Haagmans, B.L., van der Veer, B., van den Brink, S., Wijsman, L., Goderski, G., Romette, J.-L., Ellis, J., Zambon, M., Peiris, M., Goossens, H., Reusken, C., Koopmans, M.P.G., Drosten, C., 2020. Detection of 2019 novel coronavirus (2019-nCoV) by real-time RT-PCR. *Euro Surveill.* 25 (3), 2000045. Doi:10.2807/1560-7917.ES.2020.25.3.2000045.
6. Deslandes, A., Berti, V., Tandjaoui-Lambotte, Y., Alloui, C., Carbonnelle, E., Zahar, J.R., Bricler, S., Cohen, Y., 2020. SARS-CoV-2 was already spreading in France in late December 2019. *Int. J. Antimicrob. Agents.* 55 (6), 106006. Doi:10.1016/j.ijantimicag.2020.106006.
7. Geeraerd, A.H., Valdramidis, V.P., van Impe, J.F., 2005. GInaFiT, a freeware to assess non-log-linear microbial survivor curves. *Int. J. Food Microbiol.* 102 (1): 95–105. Doi:10.1016/j.ijfoodmicro.2004.11.038.
8. Gundy, P.M., Gerba, C.P., Pepper, I.L., 2008. Survival of coronaviruses in water and wastewater. *Food Environ. Virol.* 1 (1), 10. Doi:10.1007/s12560-008-9001-6.
9. Haramoto, E., Malla, B., Thakali, O., Kitajima, M., 2020. First environmental surveillance for the presence of SARS-CoV-2 RNA in wastewater and river water in Japan. *Sci. Total Environ.* 737, 140405. Doi:10.1016/j.scitotenv.2020.140405.
10. Hill, K., Zamyadi, A., Deere, D., Vanrolleghem, P. A., and Crosbie, N., 2020. SARS-CoV-2 known and unknowns, implications for the water sector and wastewater-based epidemiology to support national responses worldwide: Early review of global experiences with the COVID-19 pandemic. *Water Qual Res J.* Doi:10.2166/wqrj.2020.100.
11. Hovi, T., Shulman, L.M., van der Avoort, H., Deshpande, J., Roivainen, M., de Gourville, E.M., 2012. Role of environmental poliovirus surveillance in global polio eradication and beyond. *Epidemiol. Infect.* 140, 1–13. Doi:10.1017/S095026881000316X.
12. Kauppinen, A., Miettinen, I.T., 2017. Persistence of norovirus GII genome in drinking water and wastewater at different temperatures. *Pathogens* 6 (4), 48. Doi:10.3390/pathogens6040048.
13. Kitajima, M., Ahmed, W., Bibby, K., Carducci, A., Gerba, C.P., Hamilton, K.A., Haramoto, E., Rose, J.B., 2020. SARS-CoV-2 in wastewater: State of the knowledge and research needs. *Sci. Total Environ.* 739, 139076. Doi:10.1016/j.scitotenv.2020.139076.

14. Kocamemi, B.A., Kurt, H., Sait, A., Sarac, F., Saatci, A.M., Pakdemirli, B., 2020. SARS-CoV-2 detection in Istanbul wastewater treatment plant Sludges. *medRxiv* (preprint).  
Doi:10.1101/2020.05.12.20099358.t
15. Kordatou, M., Karaolia, P., Fatta-Kassinou, D., 2020. Sewage analysis as a tool for the COVID-19 pandemic response and management: The urgent need for optimised protocols for SARS-CoV-2 detection and quantification. *J. Environ. Chem. Eng.*, 8, 104306.  
Doi:10.1016/j.jece.2020.104306.
16. La Rosa, G., Bonadonna, L., Lucentini, L., Kenmoe, S., Suffredini, E., 2020b. Coronavirus in water environments: Occurrence, persistence and concentration methods – A scoping review. *Water Res.*, 179, 115899. Doi:10.1016/j.watres.2020.115899.
17. La Rosa, G., Iaconelli, M., Mancini, P., Ferraro, G.B., Veneri, C., Bonadonna, L., Lucentini, L., Suffredini, E., 2020a. First detection of SARS-CoV-2 in untreated wastewaters in Italy. *Sci. Total Environ.* 736, 139652. Doi:10.1016/j.scitotenv.2020.139652.
18. La Rosa, G., Mancini, P., Ferraro, G.B., Veneri, C., Iaconelli, M., Bonadonna, L., Lucentini, L., Suffredini, E., 2021. SARS-CoV-2 has been circulating in northern Italy since December 2019: evidence from environmental monitoring. *Sci. Total Environ.* 750, 141711.  
Doi:10.1016/j.scitotenv.2020.141711.
19. Lodder, W., de Roda Husman, A.M., 2020. SARS-CoV-2 in wastewater: Potential health risk, but also data source. *Lancet Gastroenterol. Hepatol.* 5 (6), 533–534.  
Doi:10.1016/S2468-1253(20)30087-X.
20. Lu, X., Wang, L., Sakthivel, S.K., Whitaker, B., Murray, J., Kamili, S., Lynch, B., Malapati, L., Burke, S.A., Harcourt J., Tamin A., Thornburg, N.J., Villanueva, J.M., Lindstrom S., 2020. US CDC real-time reverse transcription PCR panel for detection of severe acute respiratory syndrome coronavirus 2. *Emerg Infect Dis.* 26 (8), 1654–1665.  
Doi:10.3201/eid2608.201246.
21. Mallapaty, S., 2020. How sewage could reveal true scale of coronavirus outbreak. *Nature* 580 (7802), 176–177. Doi:10.1038/d41586-020-00973-x.
22. Medema, G., Been, F., Heijnen, L., Petterson, S., 2020a. Implementation of environmental surveillance for SARS-CoV-2 virus to support public health decisions: Opportunities and challenges, *Curr. Opin. Environ. Sustain.*, 17, 49–71. Doi:10.1016/j.coesh.2020.09.006.
23. Medema, G., Heijnen, L., Elsinga, G., Italiaander, R., Brouwer, A., 2020b. Presence of SARS-Coronavirus-2 RNA in sewage and correlation with reported COVID-19 prevalence in the early stage of the epidemic in The Netherlands. *Environ. Sci. Technol. Lett.* 7 (7), 511–516. Doi:10.1021/acs.estlett.0c00357.
24. Mlejnkova, H., Sovova, K., Vasickova, P., Ocenaskova, V., Jasikova, L., Juranova, E., 2020. Preliminary study of SARS-CoV-2 occurrence in wastewater in the Czech Republic. *Int. J. Environ. Res. Public Health.* 17, 5508.
25. Mousavizadeh, L., Ghasemi, S., 2020. Genotype and phenotype of COVID-19: Their roles in pathogenesis. *J Microbiol Immunol Infect.* Doi: 10.1016/j.jmii.2020.03.022.
26. Orive, G., Lertxundi, U., Barcelo, D., 2020. Early SARS-CoV-2 outbreak detection by sewage-based epidemiology. *Sci. Total Environ.* 732 (25), 139298.  
Doi:10.1016/j.scitotenv.2020.139298.
27. Peccia, J., Zulli, A., Brackney, D.E., Grubaugh, N.D., Kaplan, E.H., Casanovas-Massana, A., Ko, A.I., Malik, A.A., Wang, D., Wang, M., Warren, J.L., Weinberger, D.M., Omer, S.B., 2020. SARS-CoV-2 RNA concentrations in primary municipal sewage sludge as a leading indicator of COVID-19 outbreak dynamics. *medRxiv* (preprint).  
Doi:10.1101/2020.05.19.20105999.t

28. Silverman, A.I., and Boehm, A.B., 2020. Systematic review and meta-analysis of the persistence and disinfection of human coronaviruses and their viral surrogates in water and wastewater. *Environ. Sci. Technol. Lett.* 7 (8), 544–553. Doi:10.1021/acs.estlett.0c00313.
29. Thompson, J.R., Nancharaiyah, Y.V., Gu, X., Lee, W.L., Rajal, V.B., Haines, M.B., Girones R., Ng, L.C., Alm, E.J., Wuertz, S., 2020. Making waves: Wastewater surveillance of SARS-CoV-2 for population-based health management. *Water Res.* 184, 116181. Doi:10.1016/j.watres.2020.116181.
30. Tiwari, A., Kauppinen, A., Pitkänen, T., 2019. Decay of *Enterococcus faecalis*, *Vibrio cholerae* and MS2 coliphage in a laboratory mesocosm under brackish beach conditions. *Front. Public Health.* 7, 269. Doi:10.3389/fpubh.2019.00269.
31. Wang, X.W., Li, J.S., Jin, M., Zhen, B., Kong, Q.X., Song, N., Xiao, W.J., Yin, J., Wei, W., Wang, G.J., Si, B.Y., Guo, B.Z., Liu, C., Ou, G.R., Wang, M.N., Fang, T.Y., Chao, F.H., Li, J.W., 2005. Study on the resistance of severe acute respiratory syndrome-associated coronavirus. *J. Virol. Methods.* 126 (1–2), 171–177. Doi:10.1016/j.jviromet.2005.02.005.
32. WHO, 2020. Status of environmental surveillance for SARS-CoV-2 virus. Scientific brief, 5 August 2020. World Health Organisation. WHO/2019-nCoV/Sci\_Brief/EnvironmentalSampling/2020.1.
33. Ye, Y., Ellenberg, R.M., Graham, K.E., Wigginton, K.R., 2016. Survivability, partitioning, and recovery of enveloped viruses in untreated municipal wastewater. *Environ. Sci. Technol.* 50 (10), 5077–5085. Doi:10.1021/acs.est.6b00876.