

1 **Title**

2 The impact of early public health interventions on SARS-CoV-2 transmission and evolution

3

4 **Author list**

5 Sebastian Duchene¹, Leo Featherstone¹, Birgitte Freiesleben de Blasio^{2,3}, Edward C.

6 Holmes⁴, Jon Bohlin² and John H.-O. Pettersson^{4,5,*}

7

8 **Author affiliations**

9 ¹Department of Microbiology and Immunology, The University of Melbourne at The Peter
10 Doherty Institute for Infection and Immunity, Melbourne, Victoria, Australia.

11 ²Department of Methods Development and Analytics, Division of Infectious Disease Control
12 and Environmental Health, Norwegian Institute of Public Health, Oslo, Norway.

13 ³Department of Biostatistics, Oslo Centre for Biostatistics and Epidemiology, Institute of
14 Basic Medical Sciences, University of Oslo, Norway

15 ⁴Marie Bashir Institute for Infectious Diseases and Biosecurity, School of Life and
16 Environmental Sciences and School of Medical Sciences, the University of Sydney, Sydney,
17 New South Wales 2006, Australia.

18 ⁵Zoonosis Science Center, Department of Medical Biochemistry and Microbiology, University
19 of Uppsala, SE-751 23 Uppsala, Sweden.

20

21 *** Corresponding author:**

22 **Email:** john.pettersson@imbim.uu.se

23

24 **Author contributions**

25 SD, ECH, JB and JHOP designed the research; SD, LF, BFDB, ECH, JB and JHOP
26 compiled, computed and analysed the data; SD, LF, ECH and JHOP wrote the manuscript.

27

28 **Competing interest statement**

29 All authors have read the manuscript and have no conflict of interest relating to the
30 manuscript. The funders had no role in study design, data collection and interpretation, or the
31 decision to submit the work for publication.

32

33 **Abstract**

34 Many countries have attempted to control COVID-19 through the implementation of non-
35 pharmaceutical interventions. However, it remains unclear how different control strategies
36 have impacted SARS-CoV-2 virus transmission dynamics at the local level. Using complete
37 SARS-CoV-2 genomes, we inferred the relative frequencies of virus importation and
38 exportation, as well as virus transmission chain dynamics in Nordic countries - Denmark,
39 Finland, Iceland, Norway and Sweden - during the first months of the pandemic. Our
40 analyses revealed that Sweden experienced more numerous transmission chains, which
41 tended to have more cases, and were of longer duration, a set of features that increased with
42 time. Together with Denmark, Sweden was also a net exporter of SARS-CoV-2. Hence,
43 Sweden effectively constituted an epidemiological and evolutionary 'refugia' that enabled the
44 virus to maintain active transmission and spread to other geographic localities. This analysis
45 highlights the utility of genomic surveillance where active transmission chain monitoring is a
46 key metric.

47 **Introduction**

48 Since its initial description in December 2019, SARS-CoV-2, the causative agent of
49 COVID19^{1,2}, has rapidly led to an unprecedented global health crisis. The pandemic has
50 caused tens of millions of infections and over 1.3 million deaths worldwide and continues to
51 accelerate, imposing a significant impact on health care systems, societies and the global
52 economy. Countries are continuously struggling with how to effectively counteract the
53 pandemic, balancing the protection of health with social and economic considerations. In the
54 absence of therapeutics and available therapies and vaccines, efforts have centred on so-
55 called ‘non-pharmaceutical strategies’, particularly initial short-term large-scale restrictions to
56 population movement (e.g. ‘lock-downs’), increased testing and various levels of social
57 distancing. Analysis of the local epidemiological consequences of different control strategies
58 provides key information on the most effective approaches to reduce the rate of virus
59 transmission within communities.

60

61 The Nordic countries, defined here as Denmark, Finland, Norway, Iceland and Sweden,
62 provide a powerful example of geographically, politically and socially related countries that
63 differ markedly in how control strategies for COVID-19 were implemented during the first six
64 months of the pandemic. In particular, Sweden took a less restrictive approach where no
65 general population movement restrictions was enforced, schools for children below the age
66 of 16 years old remained open, no quarantine was imposed for infected households, and
67 businesses continued almost as usual³. In contrast, Norway and Denmark enforced a more
68 invasive population movement restriction that included enforced home office for workers in
69 the public sector, home-bound schooling, targeted private sector close downs, as well as
70 closed international borders for non-residents. Iceland, a relatively small homogenous island
71 population (of ~350,000) never initiated a population movement restriction as Norway and
72 Denmark, but rather focused on large-scale testing and contact tracing to limit virus spread
73 within the community. In relation to population size, Sweden has had a higher number of
74 COVID19-related cases and deaths, than all other Nordic countries^{4,5}, with a total of around
75 1450/58 cases/deaths per 100,000 people in Sweden, compared to around 951/13 in
76 Denmark, 428/5 in Norway, 321/7 in Finland, and 3 in Iceland, as of 30th of October 2020⁶,
77 and predominantly occurring between April and May 2020.

78

79 Although the relative ‘success’ of COVID-19 control measures are normally gauged in the
80 number of cases and deaths at the country level, it is also the case that intervention and
81 mitigation strategies may lead to marked differences in transmission dynamics among
82 populations, which may in turn impact the evolution of the virus. Using a comparative
83 analysis of genome sequence data we addressed whether the different approaches to
84 COVID-19 control employed by the Nordic countries resulted in differences in virus
85 transmission dynamics and the relative frequencies of virus importation/exportation during
86 the first seven months of the pandemic. Accordingly, we compiled a representative data set
87 of SARS-CoV-2 virus genomes and performed a phylo-epidemiological study to identify any
88 differences in transmission chain dynamics between these countries.

89

90 **Results**

91 We conducted a set of analyses on transmission chains of sampled genomes, also known as
92 “transmission lineages”⁷, which are defined as monophyletic groups of at least two genomes
93 sampled from a Nordic country. The estimated time of emergence of sampled transmission
94 chains provides information about the onset of community transmission, although such an
95 association is sensitive to sampling bias, particularly the time-scale of country-specific
96 sequencing efforts. Hence, we estimated that the first sampled transmission chains emerged

97 from around January in Sweden (15th January, 95% confidence interval, CI: 30th December –
98 16th February) to late February in Norway (25th February, 95% CI: 5th February – 7th March)
99 (Table 1). In Norway the average date of emergence of all transmission chains was around
100 early June (2nd June, 95% CI: 24th May – 13th June), over a month later than in other
101 countries (Table 1). This likely reflects that there are fewer genome sequences from between
102 February and May – that is, during the first phase of the pandemic – than between June and
103 October in this country (Supplementary Figure S1). The average time of emergence of
104 transmission chains occurred approximately two weeks and one month, respectively, prior to
105 the increase in COVID-19 cases and induced deaths (Figure 1, Panels F and G). This was
106 most notable in Sweden which, in relation to the other Nordic countries, experienced a
107 steady increase in the number of daily deaths beginning in mid-March. Correspondingly,
108 lower numbers of daily deaths were recorded in Denmark, Finland, Norway and particularly
109 Iceland (Figure 1, Panels F and G).

110

111 Our phylogenetic analyses revealed that SARS-CoV-2 was imported to all Nordic countries
112 between mid-January to mid-February 2020, with detectable community transmission from
113 the end of February as inferred by the presence of transmission chains (Figure 1). Sustained
114 community transmission continued for all Nordic countries beyond April, with the exception of
115 Iceland which was characterised by a relatively short one-month period of community
116 transmission, and Norway, which had a low number of cases combined with a low
117 sequencing proportion of 0.023 (the second lowest in our study after Sweden; Table 1).

118

119 The number of transmission chains observed was 46 (95% CI: 41.0–92.0) for Denmark, 21
120 (95% CI: 20.0–40.8) for Finland, 45 (95% CI: 34.0–62.0) for Iceland, and 26 (95% CI: 22.0–
121 30.8) for Norway. Notably, the highest number of transmission chains - 98 (95% CI: 72.2–
122 105.0) - was observed in Sweden. Similarly, the mean duration of such transmission chains
123 (number of days from detection to last sampled case) was higher in Sweden than other
124 localities: 26.3 (95% CI: 20.0–36.0) for Sweden, 14.0 (95% CI: 10.1–15.8) for Denmark, 13.5
125 (95% CI: 9.9–19.6) for Finland, 6.8 (95% CI: 5.0–7.2) for Iceland, and 18.1 (95% CI: 10.9–
126 23.7) for Norway (Table 1). In Denmark, Finland and Iceland both the duration and the
127 number of transmission chains decreased with time. Conversely, Sweden was characterised
128 by an increase in the duration, size and number of transmission chains over time (Figure 1,
129 Panels A–E). No particular trend was seen in Norway, characterised by an essentially flat
130 trend line. However, only the transmission chain duration trends for Finland and Iceland were
131 statistically significant.

132

133 The largest transmission chain was found in Denmark, with 94 cases (95% CI: 22.7–95.2),
134 followed by Iceland with 82 (95% CI: 26.0–82.0), Norway with 57 (95% CI: 52.0–57.0),
135 Finland with 35 (95% CI: 8.0–36.0), and Sweden with 33 (95% CI: 14.1–34.0). Although the
136 largest transmission chain in Sweden was smaller than that for other countries, this country
137 had the highest H_t -index (i.e. the greatest number H_t of transmission chains, each with at
138 least H_t cases) (Table 1). In particular, the H_t -index for Sweden was 9 (95% CI: 8–9),
139 whereas those for other countries were 8 for Denmark (95% CI: 4–9), 7 for Finland (95% CI:
140 4–7), 7 for Iceland (95% CI: 4–8), and 6 for Norway (95% CI: 4–7), suggesting that Sweden
141 had the least-interrupted community transmission.

142

143 To investigate the importation and exportation dynamics of SARS-CoV-2 we employed a
144 phylogeographic approach that estimates putative number of migration events between the
145 Nordic countries and a genomic sample of the global diversity⁸. As expected, genomes from
146 all of the Nordic countries were broadly distributed throughout the phylogenetic tree, implying

147 multiple migration events (Figure 2, Panel A). For Denmark and Sweden we inferred that
148 most migration events were exportations of the virus, whereas Norway, Iceland and Finland
149 were characterised by virus importations (Figure 2, Panel B). The ratios of exportation to
150 importation events for each country were: 2.1 for Sweden (95% highest posterior density,
151 HPD: 1.5–2.5), 5.3 for Denmark (95% HPD 4.3–6.9), 0.5 for Iceland (95% HPD: 0.4–0.6),
152 0.01 for Norway (95% HPD: 0.01–0.06). We estimated <1 exportation event for Finland, with
153 a large number of importations, such that the exportation to importation ratio is effectively 0.
154 The total inferred number of exportation events was larger for Denmark (335, 95% HPD:
155 304.0–377.3) than for Sweden (187, 95% HPD: 154.7–211.0). However, because the
156 sequencing proportion in Denmark was 7-fold higher than in Sweden (Table 1), it is likely that
157 the number of exportation events from Sweden has been underestimated. Most inferred
158 exportation events from Sweden were into Finland, whereas those from Denmark were into
159 non-Nordic countries, followed by Sweden and Iceland (Figure 2, Panel B).

160

161 Discussion

162 Up to the end of October 2020, Sweden had experienced a greater number of COVID-19-
163 related cases and deaths in relation to population size compared to all other Nordic
164 countries⁶. Our genomic analysis shows that whilst SARS-CoV-2 was imported to all Nordic
165 countries during the same time-period in early 2020, Sweden experienced more transmission
166 chains, which lasted longer, and tended to be more numerous. Moreover, transmission
167 chains in Sweden beginning later tended to be greater in size and duration, suggesting
168 increasing spread in the population. These trends emerged despite Sweden having the
169 lowest virus genome sampling proportion, suggesting that community transmission was
170 extensive and well-established relative to the other Nordic countries. In addition, both
171 Denmark and Sweden were characterised by having acted as exporters, of SARS-CoV-2 to
172 its Nordic neighbours. Conversely, Iceland, Norway and in particular Finland showed lower
173 levels of virus exportation. At the same time, our analyses suggest that Finland was the main
174 receiver of the exportations from Sweden, suggesting a unidirectional mode of exportation
175 between the two countries.

176

177 During the first six months of the pandemic Sweden never enforced strict community mobility
178 limitations. Instead, social distancing, limiting sizes of social events and moving to distance
179 education for students above 16 years were employed as the main mitigation efforts.
180 Conversely, Denmark, Finland and Norway enforced a relatively strict population movement
181 restrictions of their communities, closure of borders and government run facilities⁴. Iceland, in
182 a similar manner to South Korea, utilised large-scale testing and contact tracing combined
183 with social distancing and voluntary home-based quarantine without the need to regulate
184 population movement⁹ (see also Supplementary table S1). Thus, while regulating population
185 movement appears to provide an efficient mode to reduce community transmission^{10,11}, non-
186 population movement-targeted mitigation efforts are also viable options under certain
187 circumstances. Norway experienced relatively low numbers of transmission chains during the
188 first six months of the pandemic, with the bulk of the transmission chains sampled here
189 emerging in mid-April and towards the end of July, although this might in part reflect a
190 delayed start to genome sequencing such results should be interpreted with caution (Figure
191 1, Panel D). Indeed, we note that the sequencing intensity of Norwegian cases is lower than
192 some of the other Nordic countries with similar case burdens (Table 1). When sample size
193 per country increases with time, the effect of such potential sampling biases are expected to
194 decrease (Supplementary figure S2).

195

196 To what extent then did Sweden's mitigation strategy affect the epidemiological situation both
197 within the country and the Nordic region as a whole? Sweden received a lot of attention due
198 to the number of deaths reported. Sweden has been shown to have had one of the longest
199 durations of excess deaths and highest case numbers between February and May 2020⁵ and
200 it has been suggested that a greater level of self-isolation likely would have reduced the
201 number of deaths in Sweden¹². However, although Sweden exhibited a relatively high
202 number of cases compared to the other Nordic countries, and our results are consistent with
203 a relatively high community transmission for Sweden during the first six months, such an
204 increase in community transmission does not necessarily imply a causal relationship with
205 excess deaths. Whilst we employ a robust genomic-based modelling approach to study
206 transmission chain changes, equating or directly relating such changes with the number of
207 deaths may lead to incorrect conclusions as we have not taken into account any patient-
208 related epidemiological parameters such as gender or age. Furthermore, it has been argued
209 that the higher number of deaths in Sweden may also have been influenced by how intensive
210 care unit admission criteria were applied, particularly for the elderly population in care
211 homes, during the early phase of the pandemic¹². Thus, official mitigation strategies and
212 efforts alone are unlikely to explain epidemiological differences between countries, which
213 were also impacted by the compliance and practical enforcement from the general public,
214 businesses, and health care providers.

215

216 A critical issue, although one that has received little attention, is that if transmission chains
217 are allowed to remain active, they also provide increased opportunity for the virus to evolve
218 and adapt to local populations, potentially acquiring mutations that in some way enhance
219 virus fitness. Although mutations routinely appear in the SARS-CoV-2 genome, including
220 viruses sampled from Sweden¹³, their functional relevance is currently unknown. In addition
221 to providing increased mutational potential, sustained transmission chains also provide
222 epidemiological 'refugia' for the virus to be transmitted to other localities. This is in line with
223 our results showing that Sweden had a greater frequency of exportation events among
224 neighbouring Nordic countries. Thus, interrupting and ultimately stopping transmission chains
225 is not only important to minimise virus spread within populations, but also to reduce the
226 chances for the virus to accumulate beneficial mutations.

227

228 Overall, our study highlights the utility of continuous genomic surveillance and retrospective
229 studies to compare and understand differences in pandemic responses with respect to
230 transmission dynamics. In particular, the data presented suggests that transmission chain
231 monitoring may prove to be a useful metric in comparing outbreak mitigation outcome.

232

233 **Materials and Methods**

234 *Data set construction*

235 On the 23rd of June 2020, more than 40,000 complete SARS-CoV-2 high coverage genomes
236 were downloaded from the GISAID platform (www.gisaid.org/). This alignment was updated
237 on October 6th 2020 with additional genomes from the Nordic countries. Initially, the
238 genomes were binned according to country of isolation and all available genomes from the
239 Nordic countries were analysed. We calculated sequencing proportion by dividing the
240 number of sequences per country by the number of cumulative confirmed cases at the most
241 recent sequence collection date (see Table 1).

242

243 For all non-Nordic countries, the number of genomes per country was subsampled via cd-hit
244 v.4.8.1 (<https://github.com/weizhongli/cdhit>) to include 99% of the total diversity per country,
245 apart from USA for which 97% clustering was applied. All genome sequences were aligned

246 with Mafft v.7.455 (<https://mafft.cbrc.jp/alignment/software/>) and the ‘auto’ option, whereafter
247 poorly aligned regions were removed using TrimAl (<https://github.com/scapella/trimal>)
248 employing the ‘automated1’ algorithm. The GISAID accession numbers of all sequences
249 included in the final sequence alignment, comprising 3,211 SARS-CoV-2 genome
250 sequences, are available as Supplementary Table S2.

251

252 *Estimating a time-scaled phylogenetic tree*

253 We estimated maximum likelihood phylogenetic trees using IQ-TREE v2.0.6¹⁴ employing the
254 GTR+ Γ model of nucleotide substitution. A root-to-tip regression of genetic divergence
255 against sampling time was performed on the resultant maximum likelihood tree using
256 TempEst v.1.5.3¹⁵. Due to the quantity of sequences and because it did not display obvious
257 temporal signal, we obtained a time-scaled phylogenetic tree using LSDv0.3¹⁶ with a fixed
258 evolutionary rate of 1×10^{-3} subs/site/year as estimated previously¹⁷, and with the sampling
259 dates as additional calibration information.

260

261 *Detection of virus transmission chains*

262 We defined transmission chains as monophyletic groups of genomes (at least 2) all collected
263 from one of the Nordic countries, which is analogous to transmission lineages as defined
264 previously⁷. We computed key statistics from each transmission chain; the duration (i.e. the
265 length of time in days from the first to the last collected genome), the size (i.e. the number of
266 genomes), and the time of origin. For each country we also calculated an H_t -index of
267 transmission chains, where H_t is the number of transmission chains with at least H_t cases
268 (analogous to the H-index citation metric). Larger values reflect increase in the number and
269 size of lineages. For example, of Sweden’s lineages, 9 had at least 9 cases. To assess the
270 impact of phylogenetic uncertainty we obtained 1000 time-trees from standard nonparametric
271 bootstrap replicates and computed the key transmission chain statistics in each case. The
272 95% quantile of the statistics from the bootstrap replicates represent a confidence interval
273 (CI) due to phylogenetic uncertainty.

274

275 *Inferring virus migration dynamics between Nordic countries*

276 To infer the frequency of importation or exportation events of SARS-CoV-2 between the
277 Nordic countries and from the rest of the world, we employed a Bayesian stochastic mapping
278 approach, also known as a discrete phylogeographic approach, as implemented in BEAST
279 v1.10.4^{18–20} using guidelines from Dellicour et al. for very large genomic data sets⁸. We fixed
280 the time-tree described above for the analysis. This method is broadly similar to that used to
281 infer geographic movement of the virus in Belgium¹⁷.

282

283 The stochastic mapping generates a posterior distribution of ‘type-changes’ between
284 locations along the branches. Our locations consisted of the five Nordic countries plus an
285 ‘other’ category for genomes from any other location, which represent the global diversity of
286 the virus as described above. We ran a Markov chain Monte Carlo of length 10^7 steps,
287 recording every 1000th step. Sufficient sampling from the posterior was assessed using
288 Tracer with all effective sample size values above 200 as estimated in Tracer v.1.7²¹. We
289 inferred the posterior number of migration events between the six possible states and the
290 amount of time spent at each state, known as Markov rewards.

291

292 **Acknowledgements**

293 We thank all people who have contributed SARS-CoV-2 genome data to the GISAID
294 platform. Details on specific contributions are available via www.gisaid.org/. JHOP is funded
295 by the Swedish research council FORMAS (grant no: 2015-710). ECH is funded by an ARC

296 Australian Laureate Fellowship (FL170100022). SD and LF are funded by an ARC Discovery
297 Early Career Award awarded to SD (DE190100805).

298

299 **References**

300

- 301 1. Wu, F. *et al.* A new coronavirus associated with human respiratory disease in China.
302 *Nature* **579**, 265–269 (2020).
- 303 2. Lu, R. *et al.* Genomic characterisation and epidemiology of 2019 novel coronavirus:
304 implications for virus origins and receptor binding. *Lancet* **395**, 565–574 (2020).
- 305 3. Ludvigsson, J. F. The first eight months of Sweden’s COVID-19 strategy and the key
306 actions and actors that were involved. *Acta Paediatr* (2020) doi:10.1111/apa.15582.
- 307 4. Conyon, M. J., He, L. & Thomsen, S. Lockdowns and COVID-19 Deaths in Scandinavia.
308 *SSRN Electronic Journal* (2020) doi:10.2139/ssrn.3616969.
- 309 5. Kontis, V. *et al.* Magnitude, demographics and dynamics of the effect of the first wave of
310 the COVID-19 pandemic on all-cause mortality in 21 industrialized countries. *Nat Med*
311 (2020) doi:10.1038/s41591-020-1112-0.
- 312 6. WHO. WHO Coronavirus Disease (COVID-19) Dashboard. <https://covid19.who.int>.
- 313 7. Pybus, O. *et al.* Preliminary analysis of SARS-CoV-2 importation & establishment of UK
314 transmission lineages. *Virological.org* (2020).
- 315 8. Dellicour, S. *et al.* A phylodynamic workflow to rapidly gain insights into the dispersal
316 history and dynamics of SARS-CoV-2 lineages.
317 <http://biorxiv.org/lookup/doi/10.1101/2020.05.05.078758> (2020)
318 doi:10.1101/2020.05.05.078758.
- 319 9. Gudbjartsson, D. F. *et al.* Spread of SARS-CoV-2 in the Icelandic Population. *N Engl J*
320 *Med* **382**, 2302–2315 (2020).
- 321 10. Flaxman, S. *et al.* Estimating the effects of non-pharmaceutical interventions on COVID-
322 19 in Europe. *Nature* **584**, 257–261 (2020).
- 323 11. Geoghegan, J. L. *et al.* Genomic epidemiology reveals transmission patterns and
324 dynamics of SARS-CoV-2 in Aotearoa New Zealand.
325 <http://medrxiv.org/lookup/doi/10.1101/2020.08.05.20168930> (2020)
326 doi:10.1101/2020.08.05.20168930.
- 327 12. Kamerlin, S. C. L. & Kasson, P. M. Managing COVID-19 spread with voluntary public-
328 health measures: Sweden as a case study for pandemic control. *Clin Infect Dis* (2020)
329 doi:10.1093/cid/ciaa864.
- 330 13. Ling, J. *et al.* Spatio-Temporal Mutational Profile Appearances of Swedish SARS-CoV-2
331 during the Early Pandemic. *Viruses* **12**, (2020).
- 332 14. Minh, B. Q. *et al.* IQ-TREE 2: New Models and Efficient Methods for Phylogenetic
333 Inference in the Genomic Era. *Mol Biol Evol* **37**, 1530–1534 (2020).
- 334 15. Rambaut, A., Lam, T. T., Max Carvalho, L. & Pybus, O. G. Exploring the temporal
335 structure of heterochronous sequences using TempEst (formerly Path-O-Gen). *Virus*
336 *Evol* **2**, vew007 (2016).
- 337 16. To, T.-H., Jung, M., Lycett, S. & Gascuel, O. Fast Dating Using Least-Squares Criteria
338 and Algorithms. *Syst Biol* **65**, 82–97 (2016).
- 339 17. Duchene, S. *et al.* Temporal signal and the phylodynamic threshold of SARS-CoV-2.
340 *Virus Evol* (2020) doi:10.1093/ve/veaa061.
- 341 18. Minin, V. N. & Suchard, M. A. Counting labeled transitions in continuous-time Markov
342 models of evolution. *J Math Biol* **56**, 391–412 (2008).
- 343 19. Minin, V. N. & Suchard, M. A. Fast, accurate and simulation-free stochastic mapping.
344 *Philos Trans R Soc Lond B Biol Sci* **363**, 3985–3995 (2008).

- 345 20. Suchard, M. A. *et al.* Bayesian phylogenetic and phylodynamic data integration using
346 BEAST 1.10. *Virus Evol* **4**, vey016 (2018).
- 347 21. Rambaut, A., Drummond, A. J., Xie, D., Baele, G. & Suchard, M. A. Posterior
348 Summarization in Bayesian Phylogenetics Using Tracer 1.7. *Syst Biol* **67**, 901–904
349 (2018).
- 350
- 351

352 **Tables**

353

354 **Table 1.** Summary statistics computed for SARS-CoV-2 data from each Nordic country. The
 355 95% confidence interval (95% CI) is shown for statistics computed via non-parametric
 356 bootstrapping. The 95% highest posterior density (95% HPD) is shown for estimates from the
 357 Bayesian stochastic mapping analysis.

	DENMARK	FINLAND	ICELAND	NORWAY	SWEDEN
TMRC A OF FIRST TRANSMISSION CHAIN (95% CI)	2020-2-18 (2020-1-24 - 2020-3-2)	2020-2-20 (2020-2-20 - 2020-3-12)	2020-2-15 (2020-1-30 - 2020-2-26)	2020-2-25 (2020-2-5 - 2020-3-07)	2019-1-15 (2019-12-30 - 2020-2-16)
MEAN TMRC A OF SAMPLED TRANSMISSION CHAINS (95% CI)	2020-2-28 (2020-3-9 - 2020-3-14)	2020-3-28 (2020-3-2 - 2020-3-31)	2020-3-9 (2020-3-6 - 2020-3-11)	2020-6-2 (2020-5-24 - 2020-6-13)	2020-3-28 (2020-3-22 - 2020-4-2)
MOST RECENT SEQUENCE DATE	2020-5-9	2020-5-16	2020-3-28	2020-8-26	2020-8-20
CASES AT TIME OF LAST SEQUENCE DATE	10319	6286	963	10504	82656
NUMBER OF SEQUENCES	582	255	481	245	680
SEQUENCING PROPORTION	0.056	0.041	0.499	0.023	0.008
NUMBER OF TRANSMISSION CHAINS (95% CI)	46 (41.0–92.0)	21 (20.0–40.8)	45 (34.0–62.0)	26 (22.0–30.8)	98 (72.2–105.0)
MEAN DURATION (95% CI)	14.0 (10.1–15.8)	13.5 (9.9–19.6)	6.8 (5.0–7.2)	18.1 (10.9–23.7)	26.3 (20.0–36.0)
LARGEST CHAIN (95% CI)	94 (22.7–95.2)	82 (26.0–82.0)	57 (52.0–57.0)	35 (8.0–36.0)	33 (14.1–34.0)
H-INDEX (95% CI)	8 (4–9)	7 (4–7)	7 (4–8)	6 (4–7)	9 (8–9)
NUMBER OF EXPORTS (95% HPD)	335.0 (304.0–377.3)	0.0 (0.0–0.0)	64.0 (51.7–78.0)	1.0 (1.0–4.0)	189.0 (154.7–211.0)
NUMBER OF IMPORTS (95% HPD)	63.0 (52.7–74.0)	92.0 (92.0–94.0)	130.0 (123.0–140.0)	75.0 (72.0–77.0)	93.0 (82.0–109.3)
EXPORT TO IMPORT RATIO (95% HPD)	5.3 (4.3–6.9)	0.0 (0.0–0.0)	0.5 (0.4–0.6)	0.01 (0.01–0.06)	2.1 (1.5–2.5)

358

359 **Figures**

360

361 **Figure 1.** Transmission chain summaries (panels A–E). White circles mark chain duration
362 (left y-axis; in days) against to their origin date (x-axis). Black circles represent last sample
363 collected from each chain, with the right y-axis denoting their size, and the horizontal grey
364 lines to their left span their duration. The trend lines represent an ordinary regression line for
365 chain duration as a function of time, with respective p-values. New daily laboratory-confirmed
366 cases and deaths over time are shown in the same x-axis in panels F and G, respectively.
367 Note that Sweden reported case numbers weekly, causing their saltatory trajectory.

368

369 **Figure 2.** Phylogenetic tree of SARS-CoV-2 from Nordic countries as well as global genetic
370 diversity. The tips are coloured according each Nordic country (panel A). Circular migration
371 diagram of migration events between the five Nordic countries and other locations. The size
372 of the coloured arrows denotes the posterior mean number of inferred migration events from
373 the Bayesian phylogeographic analysis. The black arrows represent the migration direction
374 (Panel B).

375

376

377

378 **Supplementary materials for this manuscript including the following:**

379

380 **Supplementary Figure S1.** Number of SARS-CoV-2 genomes sampled with time for
381 all Nordic countries and global samples (i.e. ‘other’) included in the final alignment.

382

383 **Supplementary Figure S2.** Markov rewards for each Nordic country and for the global
384 diversity in the data (labelled as “other”). The Markov rewards correspond to the portion of
385 time that all lineages spend at either of the six states in the stochastic mapping. The y-axis is
386 the Markov rewards as a proportion of total tree length. Note that countries with most
387 exportation events, Sweden and Denmark are also occupy the largest portion of the tree.

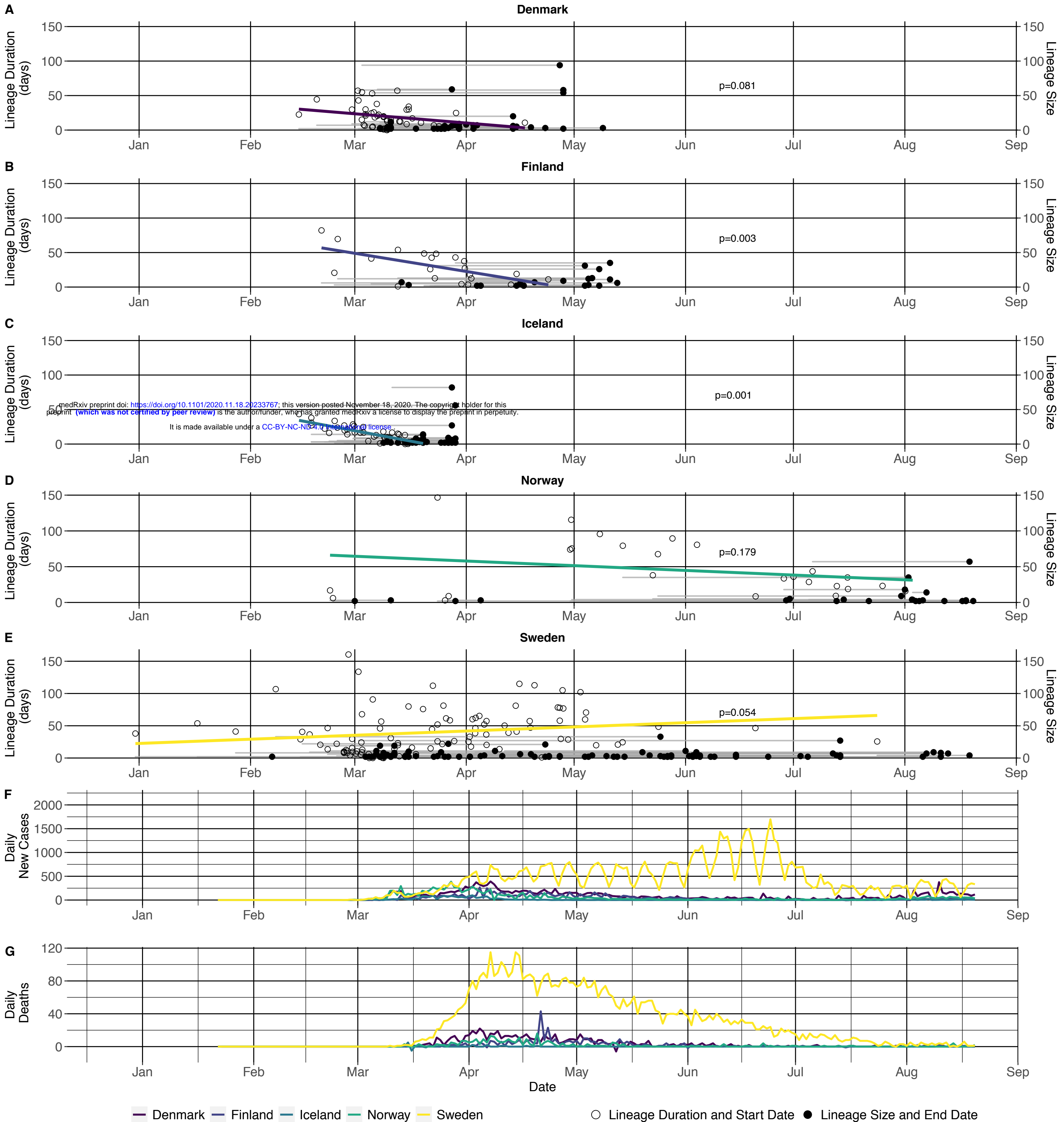
388

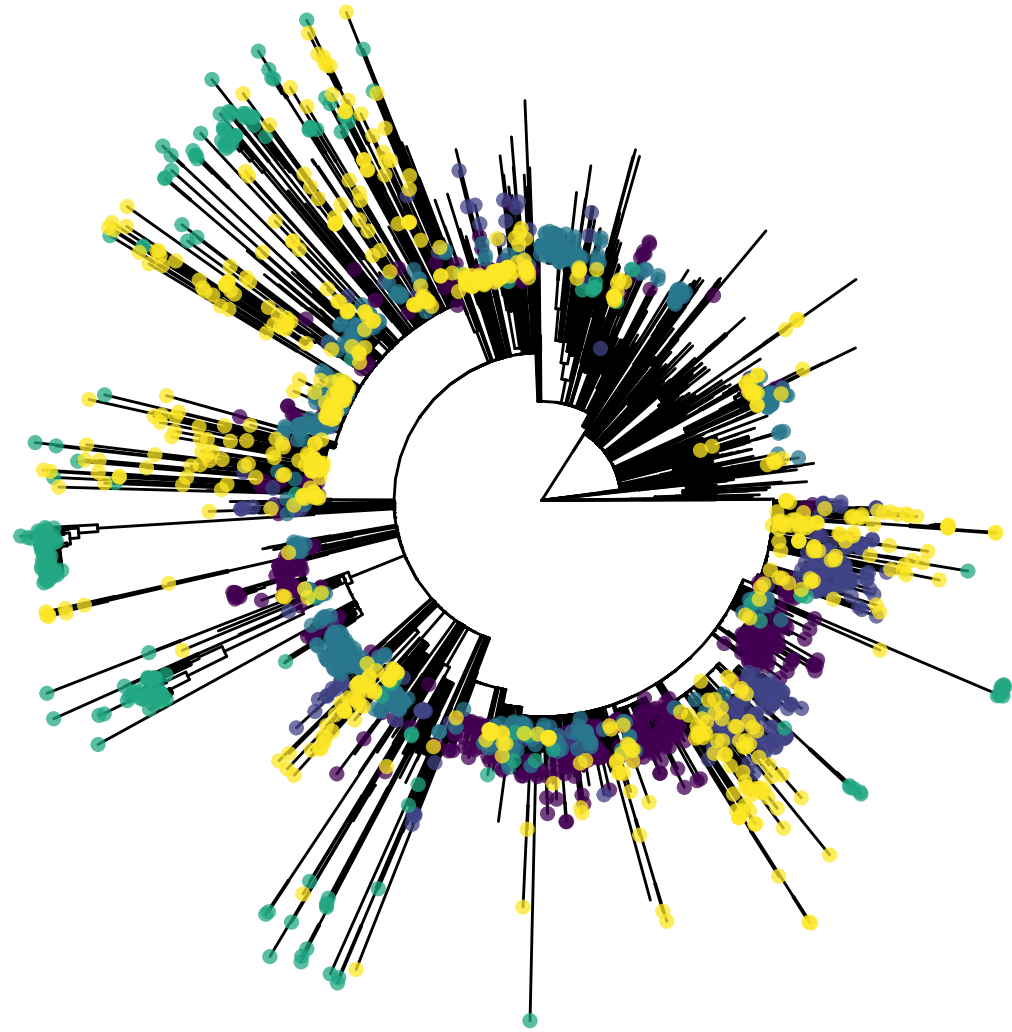
389 **Supplementary Table S1.** Summary table of mitigation response take by the Nordic
390 countries until 2020-10-21 according to the European Centre for Disease Control.

391

392 **Supplementary Table S2.** Table including all GIASID accession numbers for all sequences
393 in the final multiple sequence alignment of SARS-CoV-2.

394



A**B**