

1 Submitted to *Medrxiv* on: 12 November 2020

2
3

4 **Dysregulated immunity in SARS-CoV-2 infected pregnant women**

5
6

7 Morgan L. Sherer¹, Jun Lei², Patrick Creisher¹, Minyoung Jang², Ramya Reddy², Kristin
8 Voegtline^{3,4}, Sarah Olson⁴, Kirsten Littlefield¹, Han-Sol Park¹, Rebecca L. Ursin⁵, Abhinaya
9 Ganesan¹, Theresa Boyer², Diane M. Brown⁶, Samantha N. Walch⁶, Annukka A. R. Antar⁶,
10 Yukari C. Manabe⁶, Kimberly Jones-Beatty², William Christopher Golden⁷, Andrew J. Satin²,
11 Jeanne S. Sheffield², Andrew Pekosz¹,
12 Sabra L. Klein^{1,*}, and Irina Burd^{2,*}

13
14

15 ¹W. Harry Feinstone Department of Molecular Microbiology and Immunology, Johns Hopkins
16 Bloomberg School of Public Health, Baltimore, Maryland, USA

17 ²Integrated Research Center for Fetal Medicine, Department of Gynecology and Obstetrics,
18 Johns Hopkins University School of Medicine, Baltimore, Maryland, USA

19 ³Division of General Pediatrics, Department of Pediatrics, Johns Hopkins University School of
20 Medicine, Baltimore, Maryland, USA

21 ⁴Biostatistics, Data Management and Epidemiology Core, Johns Hopkins School of Medicine,
22 Baltimore, Maryland, USA

23 ⁵Department of Biochemistry and Molecular Biology at the School of Public Health

24 ⁶Division of Infectious Diseases, Department of Medicine, Johns Hopkins University School of
25 Medicine, Baltimore, Maryland, USA

26 ⁷Eudowood Neonatal Pulmonary Division, Department of Pediatrics, Johns Hopkins University
27 School of Medicine, Baltimore, Maryland, USA

28 * corresponding authors: Sabra Klein, sklein2@jhu.edu; Irina Burd, iburd@jhmi.edu

29
30

Short title: COVID-19 and pregnancy

31
32

Manuscript Word Count:

33 Abstract: 329 words

34 Main text: 2,492

35 References: 44

36 Figures: 4

37 Tables: 1

38 Supplementary materials: eMethods, 1 eTable, 1 eFigure

39 **Abstract**

40 **Importance:** The effects of SARS-CoV-2 infection on immune responses during pregnancy
41 have not been systematically evaluated.

42 **Objective:** To assess the impact of SARS-CoV-2 infection during pregnancy on inflammatory
43 and humoral responses in maternal and fetal samples and compare antibody responses to
44 SARS-CoV-2 among pregnant and non-pregnant women.

45 **Design:** Immune responses to SARS-CoV-2 were analyzed using samples from pregnant and
46 non-pregnant women who had either tested positive or negative for SARS-CoV-2. We
47 measured, proinflammatory and placental cytokine mRNAs, neonatal Fc receptor (FcRn)
48 receptor expression, and tetanus antibody transfer in maternal and cord blood samples.
49 Additionally, we measured anti-spike (S) IgG, anti-S-receptor binding domain (RBD) IgG, and
50 neutralizing antibody (nAb) responses to SARS-CoV-2 in serum or plasma collected from non-
51 pregnant women, pregnant women, and cord blood.

52 **Setting:** Johns Hopkins Hospital (JHH)

53 **Participants:** Pregnant women were recruited through JHH outpatient obstetric clinics and the
54 JHH Labor & Delivery unit. Non-pregnant women were recruited after receiving outpatient
55 SARS-CoV-2 testing within Johns Hopkins Health System, USA. Adult non-pregnant women
56 with positive RT-PCR results for SARS-CoV-2, within the age range of 18-48 years, were
57 included in the study.

58 **Exposures:** SARS-CoV-2

59 **Main Outcomes and Measures:** Participant demographic characteristics, antibody titers,
60 cytokine mRNA expression, and FcRn receptor expression.

61 **Results:** SARS-COV-2 positive pregnant women expressed more *IL1 β* , but not *IL6*, in blood
62 samples collected within 14 days versus > 14 days after a confirmed SARS-CoV-2 test, with
63 similar patterns observed in the fetal side of placentas, particularly among asymptomatic
64 pregnant women. Pregnant women with confirmed SARS-CoV-2 infection also had reduced

65 anti-S-RBD IgG titers and were less likely to have detectable nAb as compared with non-
66 pregnant women. Although SARS-CoV-2 infection did not disrupt FcRn expression in the
67 placenta, maternal transfer of nAb was inhibited by SARS-CoV-2 infection during pregnancy.
68 **Conclusions and Relevance:** SARS-CoV-2 infection during pregnancy was characterized by
69 placental inflammation and reduced antiviral antibody responses, which may impact the efficacy
70 of COVID-19 therapeutics in pregnancy. The long-term implications of placental inflammation for
71 neonatal health also requires greater consideration.

72 The ongoing coronavirus disease 2019 (COVID-19) pandemic, caused by severe acute
73 respiratory syndrome coronavirus 2 (SARS-CoV-2), has resulted in over 40 million infections
74 and over one million deaths worldwide¹. Despite global efforts to characterize the pathogenesis
75 of SARS-CoV-2 infection, the effects of infection on immunity during pregnancy remain
76 undefined. Due to pregnancy-associated immune and endocrine fluctuations, pregnant women
77 and their fetuses are at greater risk for severe complications caused by infectious diseases².
78 Current observations suggest that most pregnant women with COVID-19 are asymptomatic or
79 experience mild disease. The U.S. Center for Disease Control (CDC), however, reports that one
80 in four women, aged 15–49 years, hospitalized for COVID-19 during March 1–August 22, 2020
81 were pregnant, and these women were more likely to require mechanical ventilation compared
82 to nonpregnant women³. The CDC also reports that women infected with SARS-CoV-2 during
83 pregnancy are at higher risk for preterm birth⁴. Because maternal immune activation can be
84 associated with adverse fetal outcomes, including preterm birth^{5,6}, it is possible that SARS-
85 CoV-2 during pregnancy may have detrimental effects on the developing fetus.

86 During pregnancy, the immune response to viral infection includes secretion of
87 proinflammatory cytokines, such as IL-1 β and IL-6, not only at the site of infection but in the
88 placenta as well; these cytokines can readily enter the amniotic cavity and interfere with normal
89 fetal development^{5,6}. Thus, even in the absence of severe maternal symptoms or fetal viral
90 infection, the maternal immune response to SARS-CoV-2 could lead to short and long-term
91 consequences in the fetus and neonate, including multiorgan system damage and a
92 predisposition for adverse developmental outcomes^{2,7–9}. At the same time, the maternal
93 immune response can also have a protective effect on neonatal health, including the placental
94 Fc receptor (FcRn)-mediated transfer of SARS-CoV-2-specific antibodies transplacentally^{10,11}.

95 In the present study, we investigated immune responses to SARS-CoV-2 using
96 maternal blood, cord blood, and placenta samples collected from pregnant women who had
97 either tested positive or negative for SARS-CoV-2 prior to admission and delivery at the Johns

98 Hopkins Hospital (JHH). We measured maternal and cord blood serum or plasma anti-spike (S)
99 and anti-S-receptor binding domain (RBD) IgG and neutralizing antibody (nAb) responses to
100 SARS-CoV-2, whole blood proinflammatory cytokine mRNA expression, as well as placental
101 cytokine and FcRn expression. Furthermore, we compared antibody responses to an outpatient
102 non-pregnant cohort of women with confirmed COVID-19.

103

104 **Results**

105 *Cohorts.* Two cohorts were included in this study: the pregnant cohort, consisting of 33 pregnant
106 women who either tested positive (n=22) or negative (n=11) for SARS-CoV-2 prior to delivery (in
107 inpatient or Labor and Delivery settings) at the JHH; and the non-pregnant cohort, consisting of
108 women within reproductive age (18-48 years of age), as defined by WHO ¹² (n=17) who tested
109 positive for SARS-CoV-2 at an outpatient clinical testing site within the JHH Health System.
110 Comparing demographic characteristics between SARS-CoV-2 positive and negative pregnant
111 women revealed differences in maternal age at delivery, race, and ethnicity. SARS-CoV-2
112 positive pregnant women gave birth at a younger age (median =27; IQR 23-34) compared to
113 SARS-CoV-2 negative pregnant women (median =32; IQR 29-35) ($p<0.05$, **Table 1**), were more
114 likely to identify as Other (63.64%) or Black/African American (22.73%) than SARS-CoV-2
115 negative pregnant women ($p<0.001$, **Table 1**), and were more likely to identify as being of
116 Hispanic/Latina ethnicity (50%) ($p<0.05$; **Table 1**). No significant differences were found
117 between SARS-CoV-2 positive and negative pregnant participants in pre-pregnancy BMI, BMI at
118 delivery, gestational age at birth, neonate late-onset sepsis, chorioamnionitis, time between
119 membrane rupture and delivery, preeclampsia, gestational diabetes, delivery type (cesarean vs
120 vaginal), size of neonate, sex of neonate, NICU stay, or neonatal readmission (**eTable 1**). In
121 comparing SARS-CoV-2 positive pregnant women and non-pregnant women, pregnant women
122 were younger (pregnant median age =27 IQR 23-34; non-pregnant median age =34 IQR 28-41)

123 ($p < 0.05$; **Table 1**), less likely to identify as White/Caucasian (14% vs. 47%) ($p < 0.05$; **Table 1**),
124 and more likely to identify as Hispanic or Latina (50% vs. 6%) ($p < 0.05$; **Table 1**) than non-
125 pregnant women.

126 *Cytokine expression after SARS-CoV-2 infection during pregnancy.* Increased inflammation
127 caused by infection during pregnancy can be detrimental for long-term fetal and neonatal
128 outcomes^{2,9,13}. We assayed cytokine mRNA expression during SARS-CoV-2 infection as a
129 biomarker for inflammation. Because IL-1 β activation during pregnancy can cause adverse fetal
130 outcomes^{2,14,15}, we measured *IL 1 β* mRNA expression in maternal blood, cord blood, and the
131 maternal and fetal sides of placentas, which did not differ between SARS-CoV-2 positive and
132 negative pregnant women (**Figure 1A-D**). To test whether *IL 1 β* expression differed as a
133 function of maternal symptoms, samples were further categorized based on whether pregnant
134 women were asymptomatic, symptomatic, or SARS-CoV-2 negative. There was a pattern of
135 greater *IL 1 β* expression in samples from asymptomatic pregnant women (**Figure 1E-G**), with a
136 significant increase in the fetal side of placenta from asymptomatic patients compared to
137 symptomatic patients ($p < 0.05$; **Figure 1H**). To assess whether the expression of *IL 1 β* differed
138 depending on the number of days between a pregnant woman's PCR test and blood sample
139 collection, maternal blood *IL 1 β* mRNA expression within each symptom category were
140 compared based on the time window between diagnosis and blood collection. Day 14 was
141 chosen for analysis based on the incubation period of SARS-CoV-2, which extends to 14 days
142 after symptom onset¹⁶. *IL 1 β* expression in maternal blood was higher in samples collected
143 within 14 days of a positive SARS-CoV-2 test compared with samples collected > 14 days after
144 test, regardless of symptoms ($p < 0.05$; **Figure 1I**).

145 We measured *IL6* mRNA expression in maternal and fetal blood and tissue from our SARS-
146 CoV-2 positive and negative pregnant cohort. It is important to note that all SARS-CoV-2
147 positive women experienced mild to moderate disease from SARS-CoV-2 infection. In contrast

148 to the elevation observed among severe COVID-19 cases in non-pregnant individuals¹⁷⁻¹⁹, there
149 was no change in the expression of *IL6* in blood or placentas based on SARS-CoV-2 infection
150 status (**eFigure 1A-D**), symptom status (**eFigure 1E-H**), or duration of time between a positive
151 SARS-CoV-2 test and sample collection (**eFigure 1I**). These data provide evidence of selective
152 *IL1 β* mRNA upregulation, particularly early after infection and on the fetal side of the placenta in
153 non-severely ill pregnant women with SARS-CoV-2 infection.

154 *Antibody responses to SARS-CoV-2 in pregnant and non-pregnant women.* To evaluate the
155 impact of pregnancy on immune responses to SARS-CoV-2, antibody responses measured in
156 serum or plasma samples were collected at a median of 34 (IQR: 31.5 – 40) days since
157 confirmed infection, from pregnant (18.91 \pm 29.57 days post confirmed infection) and non-
158 pregnant (37.29 \pm 12.66 days post confirmed infection) women who had tested positive for
159 SARS-CoV-2. Pregnant and non-pregnant women showed similar titration of IgG (i.e., area
160 under the curve [AUC]) recognizing the full-length SARS-CoV-2 spike (S) protein (**Figure 2A**).
161 In contrast, pregnant women had significantly lower anti-S-RBD IgG titers than non-pregnant
162 women ($p < 0.05$, **Figure 2B**). Titers of nAb, however, which correlate with anti-S-RBD
163 antibodies²⁰, were measured and were not significantly different between pregnant and non-
164 pregnant women (**Figure 2C**). We also observed that significantly fewer pregnant women (8/17)
165 had detectable nAb titers (i.e., $\geq 1:20$ titer) compared with non-pregnant women (16/17)
166 ($p < 0.05$; **Figure 2C**), indicating reduced production of neutralizing antibodies in a subset of
167 pregnant women.

168 To assess whether the presence of COVID-19 symptoms was linked to antibody production,
169 antibody responses were analyzed based on symptom categories. The only antibody response
170 that was influenced by COVID-19 symptoms during pregnancy was maternal anti-S-RBD IgG
171 titers, which were lower in symptomatic, but not asymptomatic, pregnant women as compared
172 with non-pregnant women ($p < 0.05$; **Figure 2D-F**). Although overall nAb titers were not

173 influenced by COVID-19 symptoms, both symptomatic (6/13) and asymptomatic (2/4) pregnant
174 women were less likely to have detectable nAb than non-pregnant, symptomatic (16/17) women
175 ($p < 0.05$, **Figure 2F**).

176 To further explore how pregnancy altered the relationship between anti-S-RBD IgG and nAb,
177 titers were directly compared and revealed that anti-S-RBD IgG titers were higher than nAb
178 titers in both pregnant and non-pregnant women ($p < 0.001$ **Figure 3A,B**). Among pregnant
179 women only, a dichotomy in nAb titers was evident. Consistent with this observation, anti-S-
180 RBD IgG titers in pregnant women with nAb titers $< 1:20$ (i.e., no detectable nAb) were
181 significantly lower than anti-S-RBD IgG titers among pregnant women with nAb titers $\geq 1:20$
182 (i.e., detectable nAb; $p < 0.05$; **Figure 3A**). To determine whether time since a SARS-CoV-2
183 positive test or time since symptom onset could predict antibody responses, we analyzed
184 responses over time. Variation in anti-S-RBD IgG or nAb responses among pregnant women
185 with non-detectable as compared with detectable nAb titers could not be explained by the length
186 of time since a positive SARS-CoV-2 positive test (**Figure 3C,D**). Furthermore, time since
187 symptom onset did not explain variation in anti-S-RBD IgG or nAb responses among pregnant
188 women with non-detectable as compared with detectable nAb titers (**Figure 3E,F**). Differences
189 in the number of days between a PCR+ test or symptom onset and sample collection also did
190 not statistically explain variation in either anti-S-RBD IgG or nAb responses between pregnant
191 and non-pregnant women (**Figure 3C-F**). These data suggest that, independent of time,
192 pregnancy may reduce the quality of antiviral antibodies against SARS-CoV-2.

193 *Antibody transfer in SARS-CoV-2 infection.* To assess whether antibody transfer from mother to
194 fetus was affected by SARS-CoV-2 infection, SARS-CoV-2-specific antibody levels in maternal
195 and cord blood serum, FcRn expression, and anti-tetanus IgG titers were assessed in SARS-
196 CoV-2 positive and negative women. Anti-S and anti-S-RBD IgG titers did not differ between
197 maternal and cord blood serum samples (**Figure 4A,B**); titers of nAb in maternal serum were,

198 however, significantly greater than in cord blood serum ($p < 0.05$; **Figure 4C**). Protein
199 concentrations of placental FcRn, used as a biomarker of IgG transfer, were not affected by
200 either SARS-CoV-2 infection during pregnancy or symptomatology (**Figure 4D,E**). To further
201 evaluate whether SARS-CoV-2 infection altered the transfer of other antibodies from mother to
202 fetus, maternal and cord blood serum anti-tetanus IgG titers were measured and were not
203 inhibited by SARS-CoV-2 infection during pregnancy (**Figure 4F,G**). These data suggest that
204 while maternal transfer of nAb may be reduced, SARS-CoV-2 infection does not broadly impact
205 maternal transfer of humoral immunity.

206

207 **Discussion**

208 Our study provides preliminary evidence that pregnant women exhibit an early
209 inflammatory response and a reduced antiviral antibody response against SARS-CoV-2 as
210 compared with non-pregnant women. The inflammatory response of pregnant women who
211 experienced mild to moderate COVID-19 was characterized by greater *IL-1 β* , but not *IL-6*,
212 mRNA expression as has been reported in severe male and non-pregnant female COVID-19
213 patients^{18,19}, as well as greater *IL-1 β* mRNA expression on the fetal side of the placenta. Current
214 studies highlight differences in clinical manifestations between SARS-CoV-2 positive pregnant
215 and non-pregnant women, with some studies reporting differences in presenting symptoms,
216 such as lower incidence of fever and cough in pregnant women^{21,22}. There is growing evidence
217 that SARS-CoV-2 infected pregnant women face greater risk of hospitalization, intensive care
218 unit admission, and invasive ventilation compared to non-pregnant women, but experience
219 comparable or even lower risk of mortality²³⁻²⁸. Studies in SARS-CoV-2 positive pregnant and
220 non-pregnant women report higher frequencies of neutrophils and D-dimer concentrations and
221 lower percentages of lymphocytes, CD4+/CD8+ ratios, and IgG levels in pregnant than non-
222 pregnant women infected with SARS-CoV-2²⁹⁻³². Thus, our study adds to the growing literature

223 demonstrating enhanced inflammatory responses and reduced adaptive immune responses
224 during SARS-CoV-2 infection of pregnant compared to non-pregnant women.

225 Epidemiological and animal model studies have established the relationship between
226 maternal and placental inflammation and neurodevelopmental disorders, including autism
227 spectrum disorder and schizophrenia, in children⁸. Several proinflammatory cytokines have
228 been identified as mediators of this pathway, responsible for traversing the placenta and
229 triggering neurotoxicity in the developing fetus³³. Specifically, maternal IL-1 receptor blockade
230 appears to protect against fetal cortical injury in mouse models by attenuating microglial
231 activation, suggesting that IL-1 β secretion and signaling play a key role in fetal cortical injury
232 and potentially long-term, adverse neurobehavioral outcomes³⁴⁻³⁶. In this study, we identified an
233 increase in *IL 1 β* mRNA expression in the fetal side of the placenta in asymptomatic patients, as
234 well as increased expression in maternal blood collected within 14 days of a positive SARS-
235 CoV-2 test. Documentation of IL-1 \square protein levels in cord blood and in neonates born to
236 mothers prenatally infected with SARS-CoV-2, as well as newborn testing for SARS-CoV-2 and
237 long-term neurodevelopmental follow-up of such babies, are needed to determine short- and
238 long-term effects of inflammation, infection, or both.

239 The antiviral response to SARS-CoV-2 includes development of antibodies that
240 recognize the S-RBD as well as neutralize virus³⁷. Detection of anti-SARS-CoV-2 IgG
241 antibodies in maternal and neonatal blood following infection has been reported^{38,39}; how
242 symptomatology and pregnancy status, however, affect detection (qualitative) and titers
243 (quantitative) of anti-SARS-CoV-2 IgG and nAb responses has not been previously investigated.
244 Here, we demonstrate that pregnant women infected with SARS-CoV-2 had lower titers of anti-
245 S-RBD IgG compared to non-pregnant women. Although nAb titers were similar between
246 pregnant and non-pregnant women, pregnant women were significantly less likely to have
247 detectable nAb responses. Furthermore, SARS-CoV-2 infected pregnant women who had non-
248 detectable nAb responses had significantly lower anti-S-RBD IgG titers. Reduced antiviral

249 antibody responses in pregnant women infected with SARS-CoV2 were independent of time
250 since infection. The women with low antibody titers did not present with worse symptoms or
251 experience worse disease outcomes, similar to studies in non-pregnant adults^{40,41}. It is possible,
252 however, that the reduced antibody titers could increase the potential for reinfection following
253 pregnancy.

254 Limitations of this study include the small sample size as well as significant differences
255 in age, race, and ethnicity between SARS-CoV-2-infected pregnant and non-pregnant women.
256 These differences are attributable to our reliance on convenience sampling and are a result of
257 differences in participant recruitment, in which sample collection from pregnant women was
258 based on time of delivery, and sample collection from non-pregnant women was based on
259 symptom presentation. While there was a significant difference in age between the cohorts, all
260 women in this study were within reproductive ages¹². Due to our inability to know precisely when
261 each participant was infected with SARS-CoV-2, we used the number of days between a SARS-
262 CoV-2 PCR test and blood collection as the metric to assess cytokine responses, and
263 additionally used the number of days since symptom onset to evaluate humoral responses over
264 time. These metrics may not accurately represent the time since initial infection, as symptom
265 onset is self-reported and studies have reported PCR positivity for extended periods of time past
266 the initial infection^{42,43}.

267 Our results demonstrate potential differences in the pathogenesis of SARS-CoV-2,
268 including inflammatory and antibody responses to the virus, between pregnant and non-
269 pregnant women. It is well-established that immune responses change dramatically during
270 pregnancy in order to accommodate the developing fetus⁴⁴. Therefore, understanding the
271 impact of SARS-CoV-2 infection during pregnancy on the maternal immune system, and how
272 these changes alter maternal and fetal susceptibility to disease is crucial for the development of
273 vaccines and other therapeutics for COVID-19. Currently, none of the ongoing Phase III trials for
274 promising SARS-CoV-2 vaccine candidates consider pregnant women. In addition to further

275 investigations of short- and long-term consequences of SARS-CoV-2 infection in pregnancy, the
276 safety, immunogenicity, and efficacy of SARS-CoV-2 vaccines in pregnant women must be
277 considered.

278

279 **Supplemental Materials:**

- 280 **1. eMethods**
- 281 **2. eTable 1**
- 282 **3. eFigure 1**
- 283 **4. References**

284

285 **Contributions.** IB, SK, AP, JSS, AJS, WCG, and KJ-B conceived of the study and experimental
286 questions, TB, RR, AARA, and YCM collected and provided samples, MJ, TB, DMB, SNW, and
287 RR obtained and organized clinical data, MLS, JL, PC, KL, AP, H-SP, RLU, and AG processed
288 blood samples, MLS, PC, JL, KV, and SO analyzed and graphed data, MLS, MJ, IB, and SK
289 wrote the manuscript, all authors reviewed, edited, and approved the final submission.

290 **Conflicts of interest.** none to report

291 **Funding.** This work was supported by NIH/NICHD R01HD097608 (IB and SK), NIH/NICHD
292 R21HD099000 (IB), NIH/NCI U54CA260492 (SK), NIH/NIAID HHSN272201400007C (AP), and
293 NIH/NIAID T32AI007417 (MS, RU).

294 **Acknowledgements.** The authors thank patients who enrolled and participated in this research
295 and the nurses and staff at the Johns Hopkins Hospitals for assistance with recruitment and
296 sample collection from patients. We thank the National Institute of Infectious Diseases, Japan,
297 for providing VeroE6TMPRSS2 cells and acknowledge the Centers for Disease Control and
298 Prevention, BEI Resources, NIAID, NIH for SARS-related coronavirus 2, isolate USA-
299 WA1/2020, NR-5228. The authors would also like to thank Janna Shapiro for assistance in
300 figure development.

301 **Data sharing statement.** All data are contained in the manuscript.

302

303 **References**

- 304 1. Johns Hopkins Coronavirus Resource Center. <https://coronavirus.jhu.edu/>.
- 305 2. Prochaska E, Jang M, Burd I. COVID-19 in pregnancy: Placental and neonatal
306 involvement. *Am J Reprod Immunol*. 2020;(July):1-9. doi:10.1111/aji.13306
- 307 3. Delahoy MJ, Whitaker M, Chai SJ, et al. Morbidity and Mortality Weekly Report
308 Characteristics and Maternal and Birth Outcomes of Hospitalized Pregnant Women with
309 Laboratory-Confirmed COVID-19-COVID-NET, 13 States. 2020;69(38):1347-1354.
- 310 4. Woodworth KR, Olsen EO, Neelam V, et al. Birth and Infant Outcomes Following
311 Laboratory-Confirmed SARS-CoV-2 Infection in Pregnancy — SET-NET, 16 Jurisdictions,
312 March 29–October 14, 2020. *MMWR Morb Mortal Wkly Rep*. 2020;69(44).
313 doi:10.15585/mmwr.mm6944e2
- 314 5. Yockey LJ, Iwasaki A. Role of interferons and cytokines in pregnancy and fetal
315 development. *Immunity*. 2018;49(3):397-412. doi:10.1016/j.immuni.2018.07.017.Role
- 316 6. Racicot K, Mor G. Risks associated with viral infections during pregnancy The Journal of
317 Clinical Investigation. *J Clin Invest*. 2017;127(5):1591-1599.
- 318 7. Estes ML, McAllister AK. Maternal immune activation: Implications for neuropsychiatric
319 disorders. *Science (80-)*. 2016;353(6301):772-777. doi:10.1126/science.aag3194
- 320 8. Estes ML, McAllister AK. Maternal immune activation: Implications for neuropsychiatric
321 disorders. *Science (80-)*. 2016;353(6301):772-777. doi:10.1126/science.aag3194
- 322 9. Mor G, Cardenas I. The Immune System in Pregnancy: A Unique Complexity. *Am J*
323 *Reprod Immunol*. 2010;63(6):425-433. doi:10.1111/j.1600-0897.2010.00836.x
- 324 10. Albrecht M, Arck PC. Vertically Transferred Immunity in Neonates: Mothers, Mechanisms
325 and Mediators. *Front Immunol*. 2020;11(March):1-14. doi:10.3389/fimmu.2020.00555
- 326 11. Flannery DD, Gouma S, Dhudasia MB, et al. Transplacental Transfer of SARS-CoV-2
327 Antibodies. 2020:1-13.

- 328 12. *Guidelines for Their Generation, Interpretation and Analysis for Global Monitoring.*; 2006.
- 329 13. Estes ML, McAllister AK. Maternal immune activation: Implications for neuropsychiatric
330 disorders. *Science (80-)*. 2016;353(6301):772-777. doi:10.1126/science.aag3194
- 331 14. Chudnovets A, Lei J, Na Q, et al. Dose-dependent structural and immunological changes
332 in the placenta and fetal brain in response to systemic inflammation during pregnancy.
333 *Am J Reprod Immunol*. 2020;84(1). doi:10.1111/aji.13248
- 334 15. Basu S, Agarwal P, Anupurba S, Shukla R, Kumar A. Elevated plasma and cerebrospinal
335 fluid interleukin-1 beta and tumor necrosis factor-alpha concentration and combined
336 outcome of death or abnormal neuroimaging in preterm neonates with early-onset clinical
337 sepsis. *J Perinatol*. 2015;35(10):855-861. doi:10.1038/jp.2015.86
- 338 16. Symptoms of Coronavirus | CDC. [https://www.cdc.gov/coronavirus/2019-ncov/symptoms-](https://www.cdc.gov/coronavirus/2019-ncov/symptoms-testing/symptoms.html)
339 [testing/symptoms.html](https://www.cdc.gov/coronavirus/2019-ncov/symptoms-testing/symptoms.html). Accessed October 30, 2020.
- 340 17. Del Valle DM, Kim-Schulze S, Huang HH, et al. An inflammatory cytokine signature
341 predicts COVID-19 severity and survival. *Nat Med*. 2020;26(10):1636-1643.
342 doi:10.1038/s41591-020-1051-9
- 343 18. Zhu J, Pang J, Ji P, et al. Elevated interleukin-6 is associated with severity of COVID-19:
344 a meta-analysis. *J Med Virol*. May 2020. doi:10.1002/jmv.26085
- 345 19. Zeng F, Huang Y, Guo Y, et al. Association of inflammatory markers with the severity of
346 COVID-19: A meta-analysis. *Int J Infect Dis*. 2020;96:467-474.
347 doi:10.1016/j.ijid.2020.05.055
- 348 20. Wajnberg A, Amanat F, Firpo A, et al. Robust neutralizing antibodies to SARS-CoV-2
349 infection persist for months. *Science (80-)*. October 2020:eabd7728.
350 doi:10.1126/science.abd7728
- 351 21. Liu F, Liu H, Hou L, et al. Clinico-radiological features and outcomes in pregnant women
352 with COVID-19 pneumonia compared with age-matched non-pregnant women. *Infect*
353 *Drug Resist*. 2020;13:2845-2854. doi:10.2147/IDR.S264541

- 354 22. Gao YJ, Ye L, Zhang JS, et al. Clinical features and outcomes of pregnant women with
355 COVID-19: A systematic review and meta-analysis. *BMC Infect Dis.* 2020;20(1).
356 doi:10.1186/s12879-020-05274-2
- 357 23. Ellington S, Strid P, Tong VT, et al. Characteristics of Women of Reproductive Age with
358 Laboratory-Confirmed SARS-CoV-2 Infection by Pregnancy Status — United States,
359 January 22–June 7, 2020. *MMWR Morb Mortal Wkly Rep.* 2020;69(25):769-775.
360 doi:10.15585/mmwr.mm6925a1
- 361 24. Allotey J, Stallings E, Bonet M, et al. Clinical manifestations, risk factors, and maternal
362 and perinatal outcomes of coronavirus disease 2019 in pregnancy: Living systematic
363 review and meta-analysis. *BMJ.* 2020;370:3320. doi:10.1136/bmj.m3320
- 364 25. Delahoy MJ, Whitaker M, O'Halloran A, et al. Characteristics and Maternal and Birth
365 Outcomes of Hospitalized Pregnant Women with Laboratory-Confirmed COVID-19 —
366 COVID-NET, 13 States, March 1–August 22, 2020. *MMWR Morb Mortal Wkly Rep.*
367 2020;69(38):1347-1354. doi:10.15585/mmwr.mm6938e1
- 368 26. Badr DA, Mattern J, Carlin A, et al. Are clinical outcomes worse for pregnant women at
369 ≥ 20 weeks' gestation infected with coronavirus disease 2019? A multicenter case-control
370 study with propensity score matching. *Am J Obstet Gynecol.* 2020;0(0).
371 doi:10.1016/j.ajog.2020.07.045
- 372 27. Collin J, Byström E, Carnahan AS, Ahrne M. Public Health Agency of Sweden's Brief
373 Report: Pregnant and postpartum women with severe acute respiratory syndrome
374 coronavirus 2 infection in intensive care in Sweden. *Acta Obstet Gynecol Scand.*
375 2020;99(7):819-822. doi:10.1111/aogs.13901
- 376 28. Easter SR, Gupta S, Brenner SK, Leaf DE. Outcomes of Critically Ill Pregnant Women
377 with COVID-19 in the United States. *Am J Respir Crit Care Med.* October 2020.
378 doi:10.1164/rccm.202006-2182le
- 379 29. Xu S, Shao F, Bao B, et al. Clinical manifestation and neonatal outcomes of pregnant

- 380 patients with coronavirus disease 2019 pneumonia in Wuhan, China. *Open Forum Infect*
381 *Dis.* 2020;7(7). doi:10.1093/ofid/ofaa283
- 382 30. Wei L, Gao X, Chen S, et al. Clinical characteristics and outcomes of childbearing-age
383 women with COVID-19 in Wuhan: Retrospective, single-center study. *J Med Internet Res.*
384 2020;22(8):e19642. doi:10.2196/19642
- 385 31. Cheng B, Jiang T, Zhang L, et al. Clinical Characteristics of Pregnant Women With
386 Coronavirus Disease 2019 in Wuhan, China. *Open Forum Infect Dis.* 2020;7(8).
387 doi:10.1093/ofid/ofaa294
- 388 32. Mohr-Sasson A, Chayo J, Bart Y, et al. Laboratory characteristics of pregnant compared
389 to non-pregnant women infected with SARS-CoV-2. *Arch Gynecol Obstet.*
390 2020;302(3):629-634. doi:10.1007/s00404-020-05655-7
- 391 33. Smith SEP, Li J, Garbett K, Mirnics K, Patterson PH. Maternal immune activation alters
392 fetal brain development through interleukin-6. *J Neurosci.* 2007;27(40):10695-10702.
393 doi:10.1523/JNEUROSCI.2178-07.2007
- 394 34. Lei J, Vermillion MS, Jia B, et al. IL-1 receptor antagonist therapy mitigates placental
395 dysfunction and perinatal injury following Zika virus infection. *JCI Insight.* 2019;4(7).
396 doi:10.1172/jci.insight.122678
- 397 35. Fan LW, Tien LT, Zheng B, Pang Y, Rhodes PG, Cai Z. Interleukin-1 β -induced brain
398 injury and neurobehavioral dysfunctions in juvenile rats can be attenuated by α -phenyl-n-
399 tert-butyl-nitrone. *Neuroscience.* 2010;168(1):240-252.
400 doi:10.1016/j.neuroscience.2010.03.024
- 401 36. Leitner K, Al Shammary M, Mclane M, Johnston M V., Elovitz MA, Burd I. IL-1 receptor
402 blockade prevents fetal cortical brain injury but not preterm birth in a mouse model of
403 inflammation-induced preterm birth and perinatal brain injury. *Am J Reprod Immunol.*
404 2014;71(5):418-426. doi:10.1111/aji.12216
- 405 37. Amanat F, Krammer F. SARS-CoV-2 Vaccines: Status Report. *Immunity.* 2020;52(4):583-

- 406 589. doi:10.1016/j.immuni.2020.03.007
- 407 38. Zeng H, Xu C, Fan J, et al. Antibodies in Infants Born to Mothers with COVID-19
408 Pneumonia. *JAMA - J Am Med Assoc.* 2020;323(18):1848-1849.
409 doi:10.1001/jama.2020.4861
- 410 39. Flannery DD, Gouma S, Dhudasia MB, et al. SARS-CoV-2 seroprevalence among
411 parturient women in Philadelphia. *Sci Immunol.* 2020;5(49).
412 doi:10.1126/SCIIMMUNOL.ABD5709
- 413 40. Wu F, Wang A, Liu M, et al. Neutralizing Antibody Responses to SARS-CoV-2 in a
414 COVID-19 Recovered Patient Cohort and Their Implications. *SSRN Electron J.* April
415 2020. doi:10.2139/ssrn.3566211
- 416 41. Zohar T, Alter G. Dissecting antibody-mediated protection against SARS-CoV-2. *Nat Rev*
417 *Immunol.* 2020;20(7):392-394. doi:10.1038/s41577-020-0359-5
- 418 42. Wajnberg A, Mansour M, Leven E, et al. Humoral response and PCR positivity in patients
419 with COVID-19 in the New York City region, USA: an observational study. *The Lancet*
420 *Microbe.* 2020;0(0). doi:10.1016/s2666-5247(20)30120-8
- 421 43. Suri T, Mittal S, Tiwari P, et al. COVID-19 real-time RT-PCR: Does positivity on follow-up
422 RT-PCR always imply infectivity? *Am J Respir Crit Care Med.* 2020;202(1):147.
423 doi:10.1164/rccm.202004-1287LE
- 424 44. Sherer ML, Posillico CK, Schwarz JM. The psychoneuroimmunology of pregnancy. *Front*
425 *Neuroendocrinol.* 2017. doi:10.1016/j.yfrne.2017.10.006

426

427 **Figure Legends**

428 **Figure 1: *IL1 β* expression in maternal and fetal samples.** Maternal and fetal blood and
429 placentas were used to detect *IL1 β* gene expression relative to the housekeeping genes (HKG),
430 *18S* and *ACTB*. **(A-D)** Maternal blood, cord blood, and maternal and fetal side placental *IL1 β*
431 expression between SARS-CoV-2 positive (P(+)) and negative (P(-)) samples in the pregnant

432 cohort. **(E-H)** Maternal blood, cord blood, and maternal and fetal side placental *IL 1 β* expression
433 in pregnant women who were asymptomatic (P-A), symptomatic (P-S), or SARS-CoV-2
434 negative (P-N). **(I)** Maternal blood *IL 1 β* expression analyzed as a function of symptom
435 expression and days between SARS-CoV-2 PCR positive test and blood sample collection;
436 dashed line located at Day 14; significance denotes comparison of samples collected within 14
437 days of a positive SARS-CoV-2 test with samples collected > 14 days after test. Maternal blood
438 n= 27; cord blood=29; maternal side placenta n=11; fetal side placenta n=26. * $p<0.05$ by
439 Kruskal-Wallis, Dunn's multiple comparisons or Mann-Whitney test.

440

441 **Figure 2. Anti-SARS-CoV-2 antibody titration in samples collected from pregnant and**
442 **non-pregnant women.** Peripheral serum or plasma was used to titer IgG antibodies against
443 SARS-CoV-2 full-length spike (S), S-receptor binding domain (RBD), as well as whole virus
444 neutralizing antibodies (nAb). (A) Anti-S IgG, (B) anti-S-RBD IgG, and (C) nAb area under the
445 curve (AUC) titrations in serum or plasma from pregnant (P) and non-pregnant (NP) women. (D)
446 Anti-S IgG, (E) anti-S-RBD, and (F) nAb AUC titration of peripheral sera from pregnant women
447 characterized as asymptomatic (P-A) or symptomatic (P-S) as well as from non-pregnant
448 symptomatic (NP-S) women. The dashed line denotes the median AUC for SARS-CoV-2
449 negative samples. Above each box-plot is the proportion of samples with detectable antibody;
450 * $p<0.05$ by Kruskal-Wallis, Dunn's multiple comparisons, Wilcoxon exact, or Chi-square tests.

451

452 **Figure 3. Association between anti-Spike-receptor binding domain (S-RBD) IgG and**
453 **neutralizing antibody (nAb) titers in pregnant and non-pregnant women.** (A) Comparison
454 between anti-S-RBD IgG and nAb AUC in pregnant women, with additional comparison of anti-
455 S-RBD IgG and nAb responses between pregnant with (nAb titer $\geq 1:20$) and without (nAb titers
456 $< 1:20$) detectable nAb. (B) Comparison between anti-S-RBD IgG and nAb AUC in non-pregnant
457 women. (C,D) Anti-S-RBD IgG AUC and nAb analyzed as a function of detectability of nAb and

458 days between SARS-CoV-2 PCR positive test and blood sample. (E,F) Anti-S-RBD IgG AUC
 459 and nAb analyzed as a function of detectability of nAb and days since symptom onset and blood
 460 collection; missing data points due to unknown symptom onset date n=4. * $p < 0.05$ by Wilcoxon
 461 exact.

462
 463 **Figure 4. Effects of SARS-CoV-2 infection on antibody transfer from mother to fetus.** (A)
 464 Anti-S IgG, (B) anti-S-RBD IgG, and (C) nAb area under the curve (AUC) titrations in maternal
 465 serum and cord blood serum in SARS-CoV-2 positive pregnant women. (D) Western blot
 466 analysis for the neonatal Fc receptor (FcRn) protein in placentas from SARS-CoV-2 (+)
 467 symptomatic, SARS-CoV-2 (+) asymptomatic, and SARS-CoV-2 (-) women, n=35. (E)
 468 Quantification of FcRn western blot analysis relative to GAPDH was analyzed in placentas from
 469 SARS-CoV-2 positive (P(+)) and negative (P(-)) women, n=35. (F) Maternal and (G) cord blood
 470 serum anti-tetanus IgG titers in SARS-CoV-2 positive and negative samples in the pregnant
 471 cohort; maternal serum n=35, cord blood serum n=21.

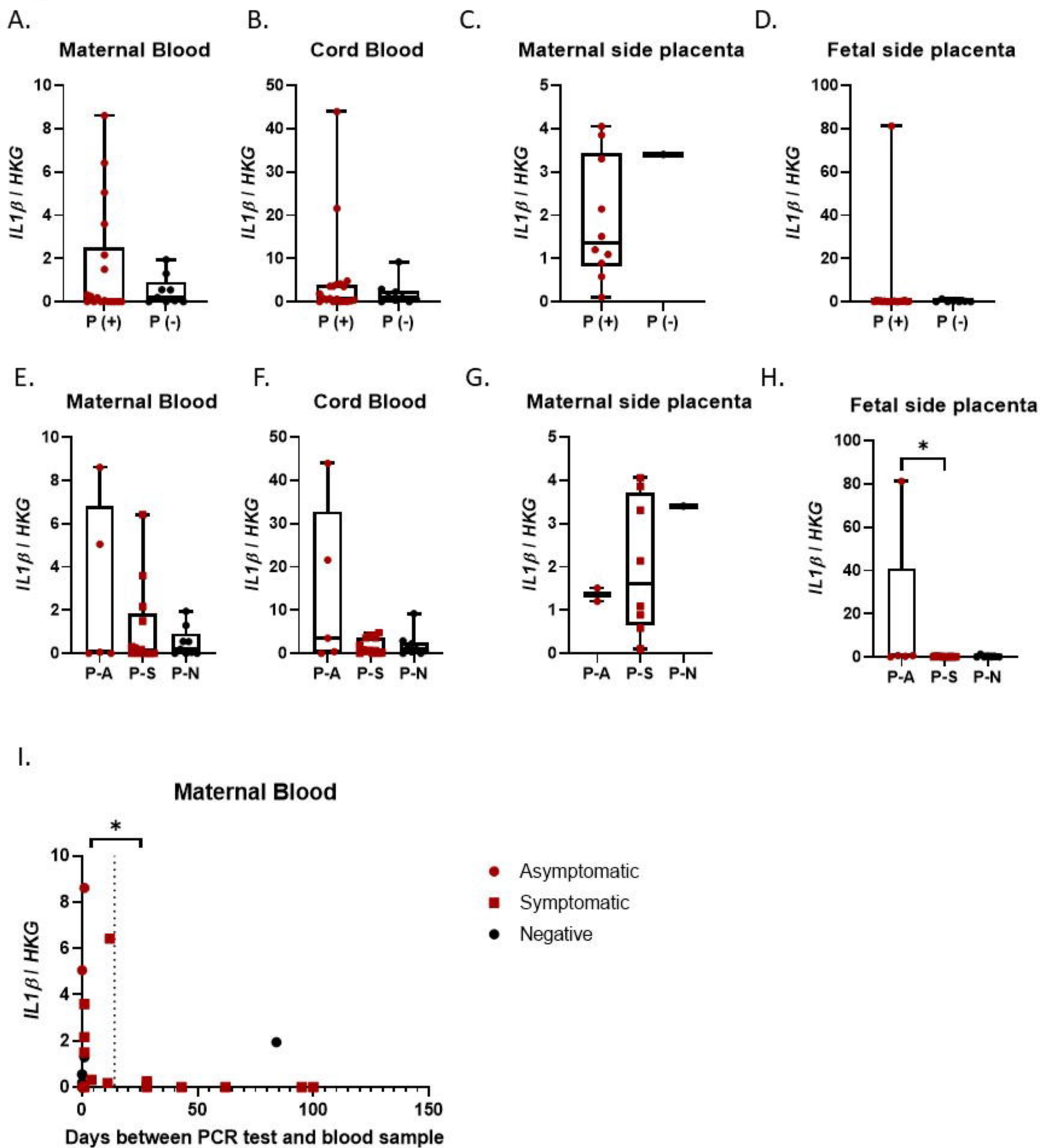
472
 473 **Table 1. Demographic data SARS-CoV-2 pregnant and non-pregnant cohorts.**

474

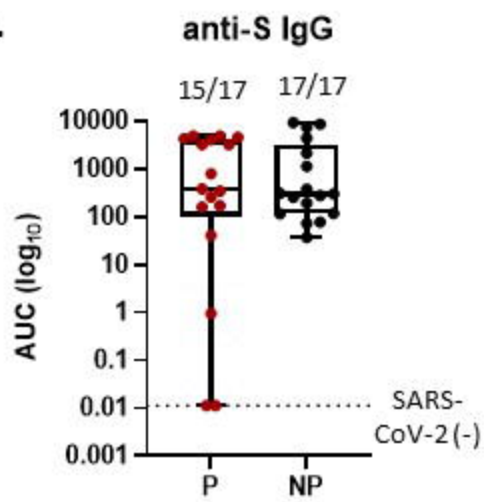
	Pregnant Female Cohort				Pregnant vs Non-pregnant Female Cohort		
	All	SARS-CoV-2 (+)	SARS-CoV-2 (-)	P value *	SARS-CoV-2 (+) Pregnant	SARS-CoV-2 (+) Nonpregnant	P value
N (%)	33	22 (66.67)	11 (33.33)		22	17	
Median Maternal Age at Delivery	29	27	32	0.0421	27	34	0.006
Race - n (%)							
Asian	2 (6.06)	0 (0)	2 (18.8)	<0.0001	0 (0)	0 (0)	0.011
Black or African American	6 (18.18)	5 (22.73)	1 (9.09)		5 (22.73)	6 (35.29)	
Other	14 (42.42)	14 (63.64)	0 (0)		14 (63.64)	3 (17.65)	
White or Caucasian	11 (33.33)	3 (13.64)	8 (72.73)		3 (13.64)	8 (47.06)	
Ethnicity - n (%)							
Hispanic or Latina	12 (36.36)	11 (50)	1 (9.09)	0.0273	11 (50)	1 (5.88)	0.003
Not Hispanic or Latina	21 (63.64)	11 (50)	10 (90.91)		11 (50)	16 (94.12)	

475

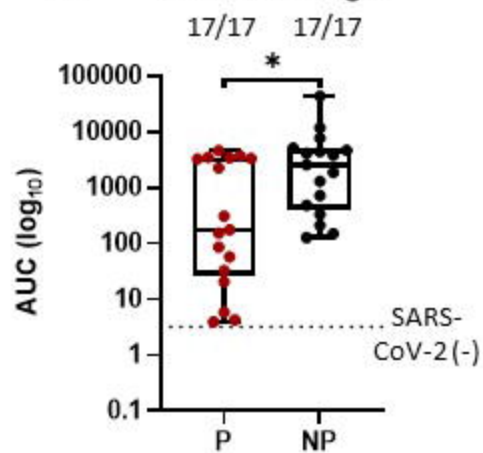
Figure 1.



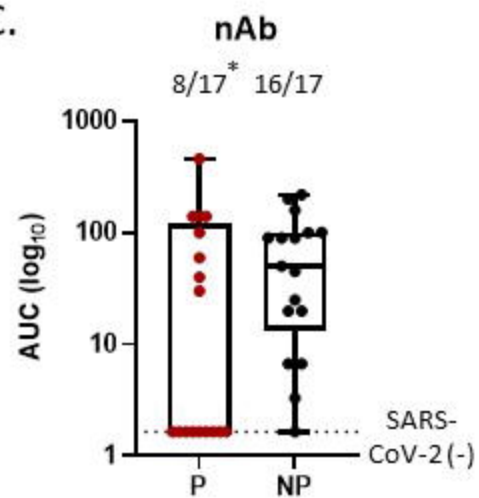
A.



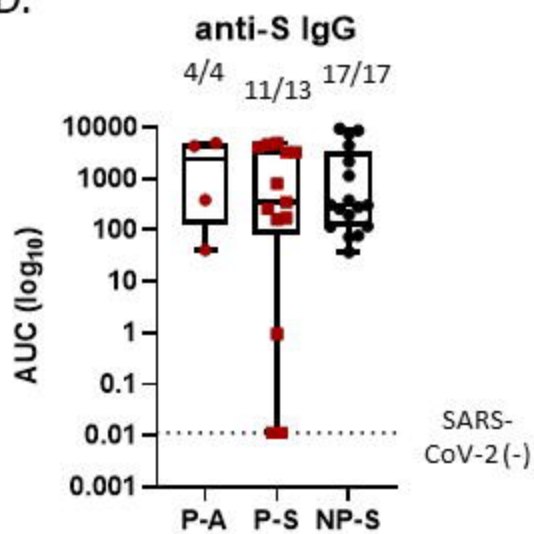
B. **anti-S-RBD IgG**



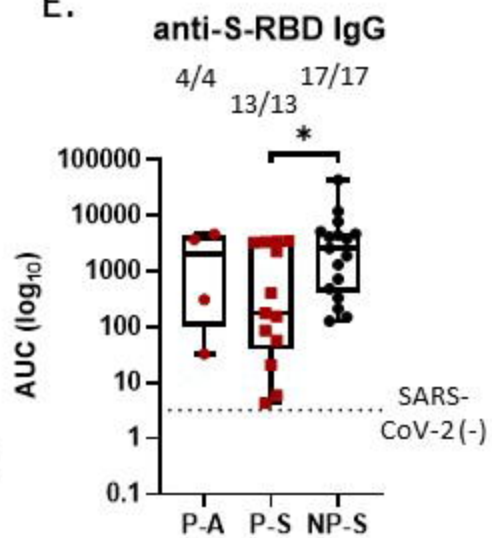
C.



D.



E.



F.

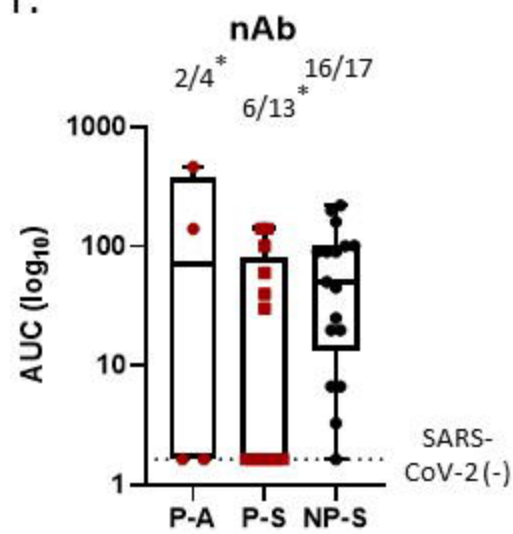


Figure 3.

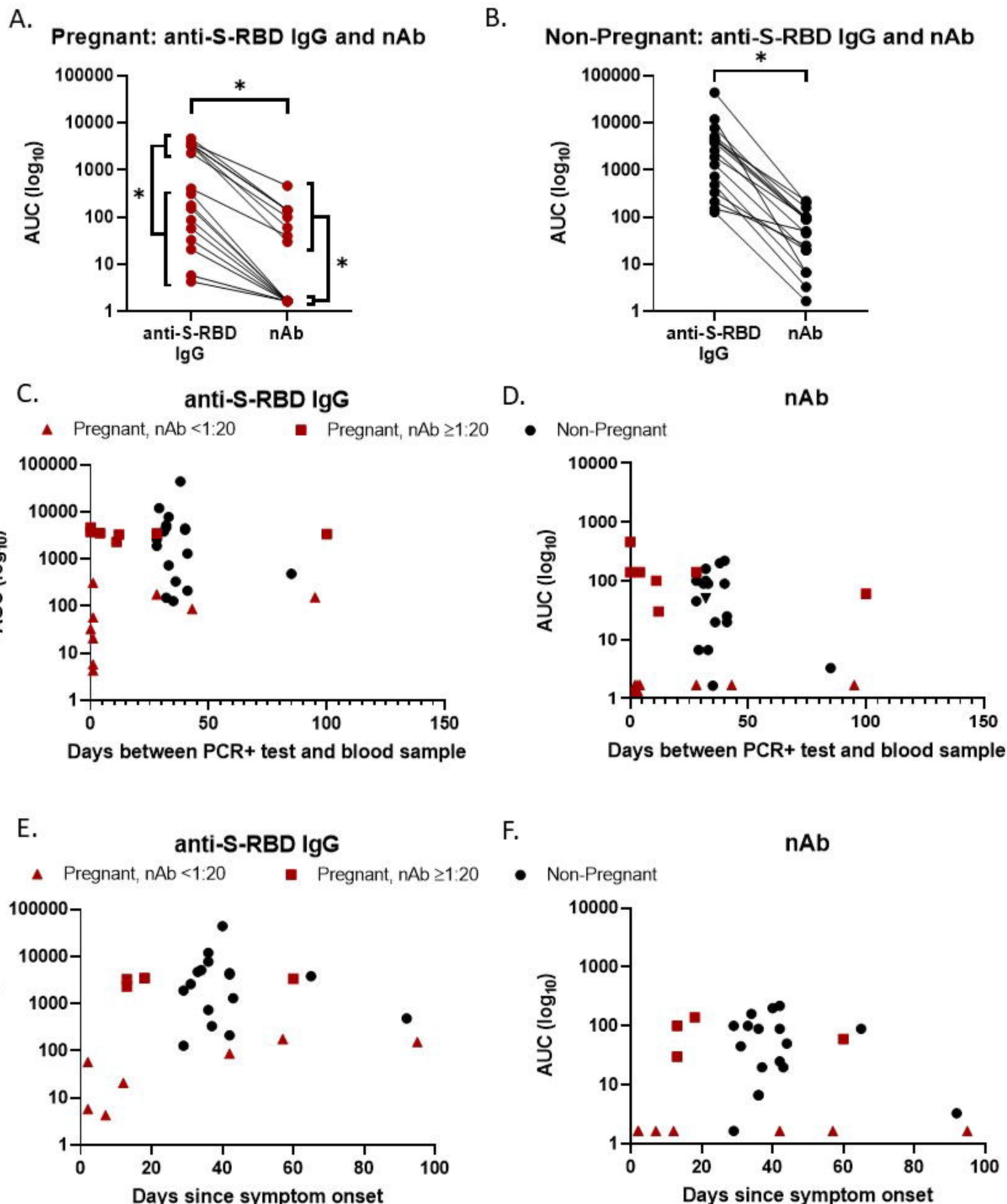


Figure 4.

