

## **Associations between solid fuel use and Early Child Development among 3 to 4 years old Children in Bangladesh**

Juwel Rana<sup>1,2,3</sup>, Patricia Luna Gutierrez<sup>4</sup>, Syed Emdadul Haque<sup>5</sup>, José Ignacio Nazif-Muñoz<sup>6,7</sup>, Dipak K. Mitra<sup>1</sup>, and Youssef Oulhote<sup>2,6</sup>

<sup>1</sup>Department of Public Health, School of Health and Life Sciences, North South University, Bangladesh

<sup>2</sup>Department of Biostatistics and Epidemiology, School of Public Health & Health Sciences, University of Massachusetts Amherst, USA

<sup>3</sup>South Asia Institute for Social Transformation (SAIST), Dhaka, Bangladesh

<sup>4</sup>Independent Researcher, Nicaragua

<sup>5</sup>UChicago Research Bangladesh, Bangladesh

<sup>6</sup>Department of Environmental Health, T. H Chan School of Public Health, Harvard University, Boston, MA, USA

<sup>7</sup>Faculty of Medicine and Health Sciences, University of Sherbrooke, Longueuil, QC, Canada

## **Abstract**

**Background:** Household Air Pollution (HAP) from solid fuel use (SFU) may have impacts on children's health in low-resources countries. Despite these potential health effects, SFU is still highly prevalent in Bangladesh.

**Objective:** This study was conducted to assess the associations between SFU and early childhood development index (ECDI) among under-five children in Bangladesh and explore the potential effect modification by sex and urbanicity.

**Materials and methods:** This cross-sectional study used Bangladesh Multiple Indicator Cluster Survey (MICS) 2019 data, a nationally representative data collected by UNICEF from all 64 districts in Bangladesh. The ECDI consisted of ten different items across four developmental domains: literacy-numeracy, physical, social-emotional development, and learning skills in the early years of life (36 to 59 months). A total of 9,395 children aged 36 to 59 months were included in this analysis. We used multilevel Poisson regression models with a robust variance where SFU was a proxy indicator for HAP exposure.

**Results:** Children exposed to SFU were 1.47 times more likely to be not developmentally on track (95% CI: 1.25, 1.73; <0.001) compared to children with no SFU exposure. Two sub-domains explained these associations, SFU was significantly associated with socio-emotional development (prevalence ratio [PR]: 1.17; 95% CI: 1.01, 1.36; p=0.035), and learning-cognitive development (PR: 1.90; 95% CI: 1.39, 2.60; p<0.001). Associations between SFU and ECDI were not significantly different (p-difference=0.210) between girls (PR: 1.64; 95% CI: 1.31, 2.07) and boys (PR: 1.37; 95% CI: 1.13, 1.65). Likewise, urbanicity did not modify the associations between SFU and ECDI outcomes.

**Conclusion:** Bangladeshi children aged 36-59 months exposed to SFU exhibited delays in

development compared to unexposed children. Public health policies should be designed to reduce HAP exposure to ensure better early childhood development in the low-resources country, where many children struggle to reach their full potential.

**Keywords:** Children, Early Childhood Development, Developmental Delay, Household Air Pollution, Solid Fuel Use, Bangladesh.

## 1. Introduction

Household Air Pollution (HAP) from cooking with solid fuels contributed to at least 3.6 million cases of premature mortality in low- and middle-income countries (LMICs) in 2016(1), making solid fuel use (SFU) a major risk factor for health in LMICs (2). SFU is most prevalent in Africa and Southeast Asia (3). This problem is particularly acute in Bangladesh; 87% of households (2017) rely on biomass fuels and are at risk of SFU induced harmful effects (4). United Nations, through its Sustainable Development Goals (SDGs), has reaffirmed its commitment to ensure better early child development and protect populations from HAP (5). These new challenges of the SDG era have a transversal connection with other SDGs, including those mapped to improve education, reduce the impact of climate change, lower poverty, and achieve gender equality (5–7).

It is well established that SFU is a major threat to children health (8–10). It has been associated with higher risks of respiratory diseases (8,10), neonatal mortality, infant mortality, low birth weight (11), a variety of cancers, and other outcomes (12). Recent animal and human studies also suggest that air pollution can affect brain development (13,14). For instance, exposure to SFU induced PM<sub>10</sub>, PM<sub>2.5</sub>, CO, and NO<sub>2</sub> are associated with damage to the central nervous system (local systematic inflammation, oxidative stress, neurotoxicity) (15), schizophrenia (16), increased risk for developing attention-deficit hyperactive disorder (ADHD) (17), aggression (18), changes in white matter (19), and damage in brain structure, predominantly when the exposure is experienced during early stages of life (including prenatal exposures) (20). Looking at early exposure is critically important because the first years of life constitute a critical window for brain development (20). Moreover, exposure to SFU disproportionately affects women and children, mostly involved in cooking (8,21–23).

However, most of these studies are limited to developed countries (15,20). Recent evidence suggests that about 25 million children under 5 in LMICs are at risk of not reaching their full potential due to poverty, stunting, nutrient deficiency, violence, heavy metal exposure, and other social, biological, and physiological factors (24,25). Further, early childhood development (ECD) delays have been associated with lags in adult productivity and health challenges later in life (3,25,26). In light of these indications, the study of the potential effects of SFU on child development in LMICs becomes a key area of investigation when addressing child development in the context of SDGs.

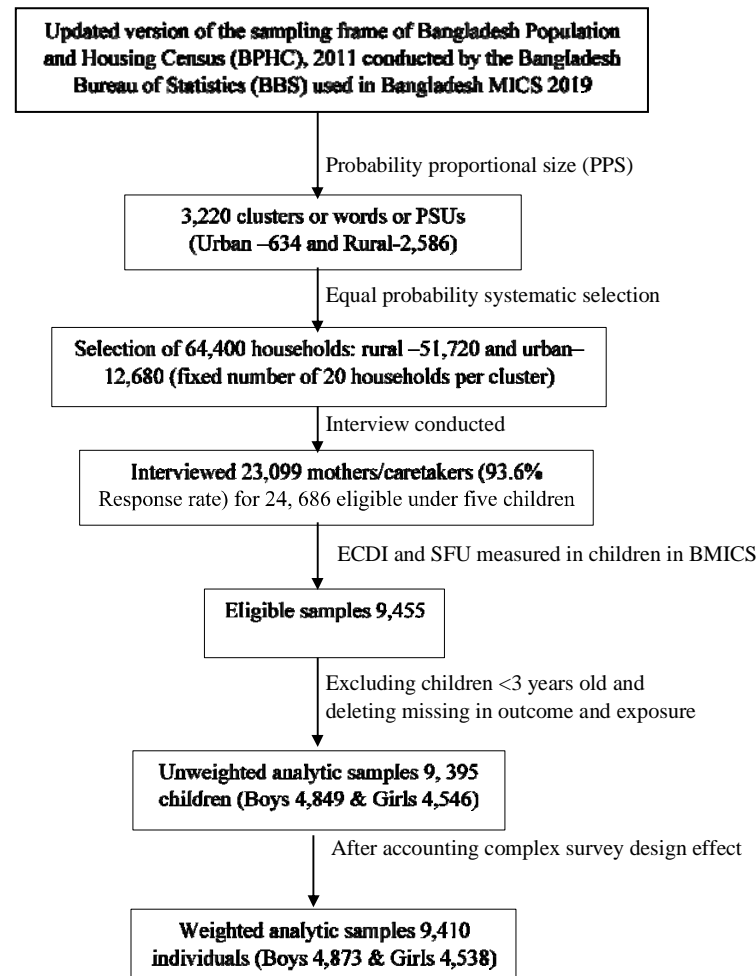
Studies assessing HAP and ECD in LMICs are slowly emerging. Two studies in Ghana (23,27) found a negative association between school attendance and energy poverty and SFU and ECD. While the studies carried out in Ghana move our understanding of SFU with child development and education forward, these studies did not account for seasonality nor cooking place; thus, their estimates could be biased. On the other hand, two studies assessed how environmental exposures such as arsenic and manganese affected children's intellectual functions in Bangladesh (28,29). Studies in this country, however, did not examine the association between SFU and ECD. To fill in the gaps in this literature, this study aims to assess the association between SFU and ECDI outcomes among under-five children in Bangladesh and explore the potential effect modification by sex and urbanicity in these associations.

## **2. Materials and Methods**

### *2.1. Study participants and data resources*

We conducted this cross-sectional study using the latest round of Bangladesh Multiple Indicator Cluster Survey (MICS) 2019. The MICS is a nationally representative household survey that generates reliable, statistically sound, and comparable international records (30).

This dataset included 100 crucial indicators of the health and well-being condition in which women and children live in LMICs. Data were collected through five different face-to-face questionnaires gathering information about basic demographic indicators of women (aged 15–49 years), children (aged 5-17), and younger children (under five years). The MICS 2019 includes a representative sample from eight divisions and all 64 districts located in urban and rural areas of Bangladesh in which information of 9,395 children 3-5 years old was collected (31). Detailed information on the survey is available at <http://mics.unicef.org/> (30).



**Figure 1: Schematic diagram of the analytic study sample**

## 2.2. Early child development indicators

The Early Child Development Index (ECDI) is a development indicator that assesses whether a child is developmentally on track regarding specific milestones. It was first introduced as part of the fourth round of the MICS in the Questionnaire for Children under-5 and provided the first population-based indicator of early childhood development comparable at the international level (6,31). The index consists of ten different items across four developmental domains: literacy-numeracy (3 items), physical (2 items), social-emotional development (3 items), and learning skills (2 items) across the early years of life (36 to 59 months) (31). A child is considered developmentally on track if the child is on track in at least three of the four domains:

*Literacy-numeracy:* A child is considered developmentally on track if they can identify at least ten letters of the alphabet, read at least four simple words, and know the name or recognize the symbols of all numbers from 1 to 10 (31).

*Physical:* A child is considered developmentally on track if they can pick up a small object with two fingers and if the mother or primary caregiver does not indicate that the child is sometimes too sick to play (31).

*Social-emotional:* A child is considered developmentally on track if they can perform two of the following: if the child gets along with other children; if the child does not kick, bite or hit other children; and if the child does not get distracted easily (31).

*Learning-cognition:* A child is considered developmentally on track if they can follow simple directions and do it independently when indicated (31).

## 2.3. Solid Fuel Use

SFU is considered here as a proxy for HAP. A child is considered “exposed” if the

household reports the use of coal, charcoal, wood, straw/shrubs, animal dung, or agricultural crop residue as a primary source of energy for cooking in the traditional solid fuel cookstove and is considered “non-exposed” if the household reports the use of electricity, liquefied petroleum gas, natural gas, and/or biogas as a primary source of energy for cooking in the clean cookstove.

#### *2.4. Covariates*

Based on prior literature (10,17,20,23,25,32,33), variables that are known to be associated with early child development, such as mother’s characteristics (age, education, and marital status), children’s characteristics (age, sex, size, iodine supplementation, stunting, attendance in early child development education program (ECDEP), caregiver’s stimulation), spatial characteristics (region, urbanicity-urban & rural, seasonality) and household’s characteristics (paternal education, household wealth quintiles, cooking place, types of cookstoves and chimney/fan-is there any chimney/fan if households have solid fuel cookstove) were included as covariates. While breastfeeding status for children aged 3-5 was unavailable, we use stunting as a proxy for nutritional status. We have reconstructed household wealth quintiles excluding types of cooking fuels used in the households to avoid over adjustment in inferential models as the original household wealth quintiles (index of available household assets) provided by the United Nations Children's Fund (UNICEF) included types of fuels to construct household wealth index. The household wealth quintiles were categorized into five quintiles, with the lowest quintile reflecting poorest households and the highest quintile the wealthiest households.

#### *2.5. Statistical analysis*

Descriptive statistics were used to provide general features of the data. The distribution and prevalence of global ECDI and its sub-domains were calculated by each of



the covariates.

Odds ratios estimated using logistic regression can significantly overestimate relative risk (RR) when the outcome is common (34). We used a multilevel Poisson regression model with robust variance to address this, including the survey weights to examine the associations between SFU, ECDI, and its four subdomains (10,34). Results from the multilevel Poisson regression model are presented as a prevalence ratio (PRs) with 95% confidence intervals (95% CI), and we considered a p-value of 0.05 as the level of statistical significance. Additional analyses explore the associations between SFU and ECDI modified by sex (boys/girls) and urbanicity status (Rural/urban). We used random subject effects accounting for cluster and stratum. Final models were adjusted for the following fixed effects: child sex, child age, maternal age, maternal education, household wealth quintiles, iodine status, stunting, attendance to ECDEP, cooking place, season and urbanicity. Differences between estimates for boys and girls and urban and rural areas were estimated using a p-difference extracted using a Wald test for the interaction term. All analyses were conducted in R statistical software version 4.2 (35) and Stata version 16 (36).

## *2.6 Data and Code Availability*

All data files are available from the MICS program database: <https://mics.unicef.org/surveys>.

Codes are available upon request.

## **3. Results**

### *3.1. Prevalence of ECD and associated characteristics*

The prevalence of ECD outcomes, characteristics of the study children aged 3-5 years, their parental and household information are presented in Table 1. A total of 9,395 children aged 3-5 years were included in this analysis. The prevalence of children not being

developmentally on track was 25.26% in overall ECDI. For the four subdomains: 71.14% of children were not developmentally on track in literacy-numeracy, 27.20% in socio-emotional development, 8.60% in learning, and 1.38% in physical development (**Table 1**). On the other hand, the prevalence of SFU as a primary source of energy for cooking and use of traditional solid fuel cookstoves was 81.37% in Bangladeshi households.

**Table 1.** Sample characteristics of 36 to 59 months old children in Bangladesh (Weighted Percentage or mean and n=Unweighted)

Characteristics	Number of Children (n=Unweighted)	% or Mean (SD) [Weighted]
<i>Sex of the child</i>		
Boy	4,849	51.79
Girl	4,546	48.21
<i>Age of child (months)</i>		
36-47 months	4,777	51.10
48-59 months	4,618	48.90
<i>Size of the child (Information is unavailable for all sample)</i>		
Larger than average	137	9.31
Average	1,086	72.65
Smaller than average	255	18.04
<i>Child nutritional status</i>		
Height-for-age (WHO)	9,394	2.96 (20.47)
Stunted	2,534	26.82
Iodine	6,957	74.70
<i>Caregivers' Stimulation</i>		
Poor	1,908	18.69
High	6,488	71.01
Ever attended ECDEP	1,771	19.34
Maternal age (15 to 49 years old)	9,205	28.6 (6.04)
<i>Maternal age (categories)</i>		
15-19 years	224	2.46
20-24 years	2,496	26.84
25-29 years	2,754	29.99
30-34 years	2,132	23.29
35-39 years	1,130	12.20
40-49 years	469	5.23
<i>Maternal education</i>		
None/Pre-primary	1,246	13.15
Primary	2,325	24.33
Secondary	4,553	48.12
High Secondary +	1,291	14.41
<i>Paternal education</i>		
None/Pre-primary	1,847	22.89
Primary	2,593	30.86
Secondary	2,420	30.16

High Secondary +	1,238	16.08
<i>Wealth quintile</i>		
Poorest	1,879	22.30
Poorer	1,879	19.95
Middle	1,879	18.67
Richer	1,879	19.30
Richest	1,879	19.77
<i>Region</i>		
Barisal	823	5.64
Chattogram	1,967	21.93
Dhaka	1,802	23.07
Khulna	1,309	10.44
Mymensingh	563	7.51
Rajshahi	1,030	12.56
Rangpur	1,108	10.82
Sylhet	793	8.03
<i>Urbanicity</i>		
Rural	7,649	79.07
Urban	1,746	20.93
<i>Season</i>		
Winter (January-March)	5,085	56.24
Summer (April-June)	4,310	43.76
<i>Types of fuels for cooking</i>		
Clean fuels	1,326	18.63
Solid fuels	8,069	81.37
<i>Technologies/Cookstoves for cooking</i>		
Clean fuel stove	1,326	18.63
Solid fuel stove	8,069	81.37
Chimney/fan in solid fuel stove	355	4.10
<i>Cooking Place</i>		
Main house	3,257	34.44
Separate room	3,582	37.44
Outdoor	2,556	28.12
<i>Early Childhood Development Index (ECDI)</i>		
Literacy-numeracy (not on track)	6708	71.14
Physical (not on track)	138	1.38
Socio-emotional (not on track)	2589	27.20
Learning (not on track)	903	8.60
ECDI (not on track)	2516	25.26

Overall, 51.79% of the children were boys, 51.10% were between 36 and 47 months of age, 19.34% attended an ECDEP, 71.01% received sufficient support from caregivers, 74.70% received intake of iodine, 26.82% were stunted, and 79.07% lived in rural settings. Mothers' characteristics indicate that 56.83% of mothers were between 20 and 29 years old, and 37.48% had less than or equal to primary education. About 34.44% of households have their cooking place in the main house, 81.37% of households used solid fuel cookstoves, and

only 4.10% of them are equipped with a chimney or a fan.

**Table 2.** Percentage of children age 36-59 months who are developmentally not on track for indicated domains (Weighted Percentage and n=Unweighted)

Characteristics	Number of Children (Unweighted)	ECDI %	p-value	Literacy-Numeracy %	p-value	Physical %	p-value	Socio-emotional %	p-value	Learning %	p-value
<b>Total</b>	9,395 (100)	25.3	-	71.1	-	1.4	-	27.2	-	8.6	-
<b>Child sex</b>											
Boy	4,849	28.5	<0.001	72.5	0.007	1.4	0.888	30.9	<0.001	9.0	0.168
Girl	4,546	21.6		69.7		1.4		23.1		8.1	
<b>Child age</b>											
36-47 months	4,777	31.3	<0.001	83.6	<0.001	1.6	0.062	29.0	0.0003	10.3	<0.001
48-59 months	4,618	18.8		58.2		1.1		25.2		6.7	
<b>Child size</b>											
Larger than average	137	22.2	0.326	64.2	0.091	0.8	0.183	29.3	0.453	5.4	0.154
Average	1,086	28.5		71.7		0.8		31.8		10.7	
Smaller than average	255	25.6		75.8		2.2		27.5		8.9	
<b>Child nutritional status (Stunting)</b>											
No	6,860	23.5	<0.001	67.5	<0.001	1.3	0.191	26.8	0.289	7.7	<0.001
Yes	2,534	29.7		81.3		1.7		28.0		10.8	
<b>Iodine</b>											
Yes	6,957	24.0	<0.001	68.6	<0.001	1.3	0.168	26.8	0.311	8.6	0.965
No	2,436	28.9		79.0		1.7		28.1		8.5	
<b>Ever attended ECDEP</b>											
No	7,624	27.9	<0.001	78.6	<0.001	1.4	0.388	27.3	0.372	9.5	<0.001
Yes	1,771	14.1		40.4		1.1		26.1		4.6	
<b>Caregivers' support</b>											
None	999	29.5	0.001	88.3	<0.001	2.1	<0.001	23.6	0.076	10	0.241
Poor	1,908	27.4		79.5		2.5		27.4		8.1	
Sufficient	6,488	24.0		66.5		0.9		27.6		8.4	
<b>Maternal age</b>											
15-19years	224	31.1	0.059	80.7	0.0001	1.5	0.796	30.9	0.476	11.3	0.193
20-24 years	2,496	24.7		69.1		1.4		28.0		7.8	
25-29years	2,754	24.3		70.4		1.4		26.2		8.3	
30-34years	2,132	25.1		69.9		1.1		27.0		8.7	
35-39years	1,130	25.7		73.9		1.4		26.5		8.7	
40-49years	469	30.6		79.2		0.8		29.8		11.1	
<b>Maternal education</b>											
None/Pre-primary	1,246	31.5	<0.001	85.2	<0.001	2.2	0.007	27.8	0.134	12.5	<0.001
Primary	2,325	30.6		80.4		1.8		28.4		10.4	
Secondary	4,553	23.2		68.1		1.0		27.1		7.2	
Higher Secondary+	1,291	17.0		53.3		1.3		24.4		6.1	
<b>Paternal education</b>											
None/Pre-primary	1,847	30.7	<0.001	83.2	<0.001	2.0	0.011	27.5	0.003	11.9	<0.001
Primary	2,593	29.4		76.3		1.5		30.1		8.8	
Secondary	2,420	22.7		66.9		0.8		26.6		7.4	
Higher Secondary+	1,238	16.0		54.2		1.0		23.7		5.2	
<b>Wealth quintile</b>											
Poorest	1,879	30.3	<0.001	83.5	<0.001	1.8	0.196	27.0	0.0002	11.3	<0.001
Poorer	1,879	30.1		78.7		1.6		28.5		10.5	
Middle	1,879	26.9		72.6		1.6		30.0		9.1	
Richer	1,879	23.8		67.7		1.2		27.9		6.9	
Richest	1,879	17.2		57.8		0.9		22.9		6.0	
<b>Region</b>											
Barisal	823	32.1	<0.001	69.3	<0.001	0.8	<0.001	35.3	<0.001	11.3	<0.001
Chatrogram	1,967	21.8		68.0		1.3		27.7		9.0	
Dhaka	1,802	18.3		68.1		1.2		18.1		6.4	
Khulna	1,309	26.9		72.2		0.6		32.3		5.9	
Mymensingh	563	39.0		69.7		4.4		42.1		8.6	

Rajshahi	1,030	30.4		76.2		1.1		30.0		7.6	
Rangpur	1,108	16.4		74.2		1.8		17.3		6.5	
Sylhet	793	38.1		78.6		0.7		33.6		19.2	
<b>Urbanicity</b>											
Urban	1,746	21.8	0.002	65.2	<0.001	1.1	0.303	25.6	0.182	7.4	0.124
Rural	7,649	26.1		72.7		1.5		27.5		8.8	
<b>Season</b>											
Winter	5,085	25.4	0.640	70.5	0.144	1.3	0.590	27.3	0.694	8.8	0.503
Summer	4,310	24.9		72.2		1.5		26.8		8.3	
<b>Types of fuels for cooking</b>											
Clean fuel	1,326	16.3	<0.001	60.0	<0.001	1.0	0.253	22.8	0.001	4.7	<0.001
Solid fuel	8,069	27.2		73.8		1.5		28.1		9.4	
<b>Cooking place</b>											
Main house	3,257	23.8	0.020	67.3	<0.001	1.3	0.797	25.8	0.207	8.9	0.440
Separate room	3,582	24.7		71.3		1.5		28.2		8.0	
Outdoor	2,556	27.5		75.7		1.4		27.2		8.8	
<b>Technologies/Cookstoves for cooking</b>											
Clean fuel stove	1,326	16.3	<0.001	60.0	<0.001	1.0	0.253	22.8	0.001	4.7	<0.001
Solid fuel stove	8,069	27.2		73.8		1.5		28.1		9.4	

The results from univariate associations of ECD outcomes by each sub-domain with sample characteristics are presented in **Table 2**.

Early Childhood Developmental Delays in 3-4 Years Children in Bangladesh



**Figure 2: Regional variation in early childhood developmental delays**

All maternal, child, and household characteristics, except child size and season during

the study, were significantly associated with global ECDI. Younger children (3 years old), boys, stunted children, those not receiving sufficient iodine intake, those not ever attending an ECEP, not receiving or poor caregivers' support, with parents below primary education, living in rural areas and poorest/poorer households and using solid fuels for cooking were more likely to be not developmentally on track in ECDI. Figure 2 shows that the highest percentages of children were not developmentally on track in global ECDI in Mymensingh (PR of ECDI 39.1) and Sylhet divisions (PR of ECDI 38.1).

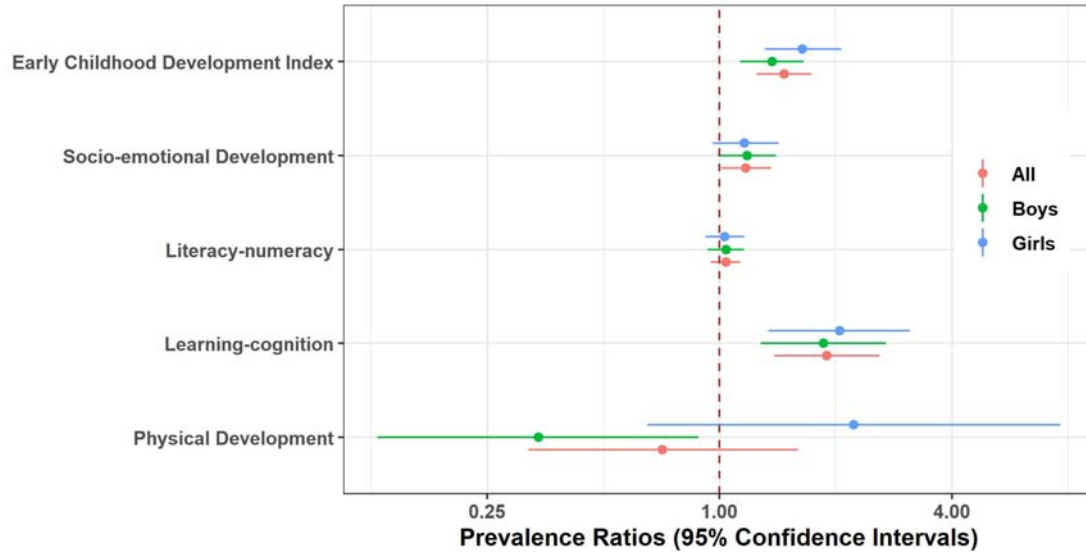
On subdomains, all maternal, households, and children characteristics except for child size and seasonality were associated with literacy-numeracy. Only caregivers' sufficient support, parental education, wealth quantiles, and region were associated with physical development. Regarding socio-emotional development, children's age, sex, paternal education, wealth quintiles, region, type of cooking fuels, and cookstove technologies were associated with this domain. Finally, learning was associated with children's age, stunting, ever attended ECDEP, parental education, wealth quintiles, region, and type of cooking fuels and cookstoves used.

### *3.2. Multivariable associations between SFU and ECD by child sex and urbanicity*

**Figure 3-4** shows the prevalence ratios of the associations between ECD outcomes and SFU by sex of the children and urbanicity after adjusting for potential confounders. Children exposed to SFU were 1.47 times more likely not to be developmentally on track in global ECDI (95% CI: 1.25, 1.73;  $p < 0.001$ ). Similar associations were observed on regard to socio-emotional development (PR: 1.17; 95% CI: 1.01, 1.36;  $p = 0.035$ ), and learning-cognitive development (PR: 1.90; 95% CI: 1.39, 2.60;  $p < 0.001$ ) with significant differences for each outcome. However, literacy-numeracy (PR: 1.04; 95% CI: 0.95, 1.13) and physical development (PR: 0.71, 95% CI: 0.32, 1.60) did not show any significant associations with

SFU.

**Figure 3: Association between SFU and ECD outcomes stratified by sex of the children in Bangladesh**

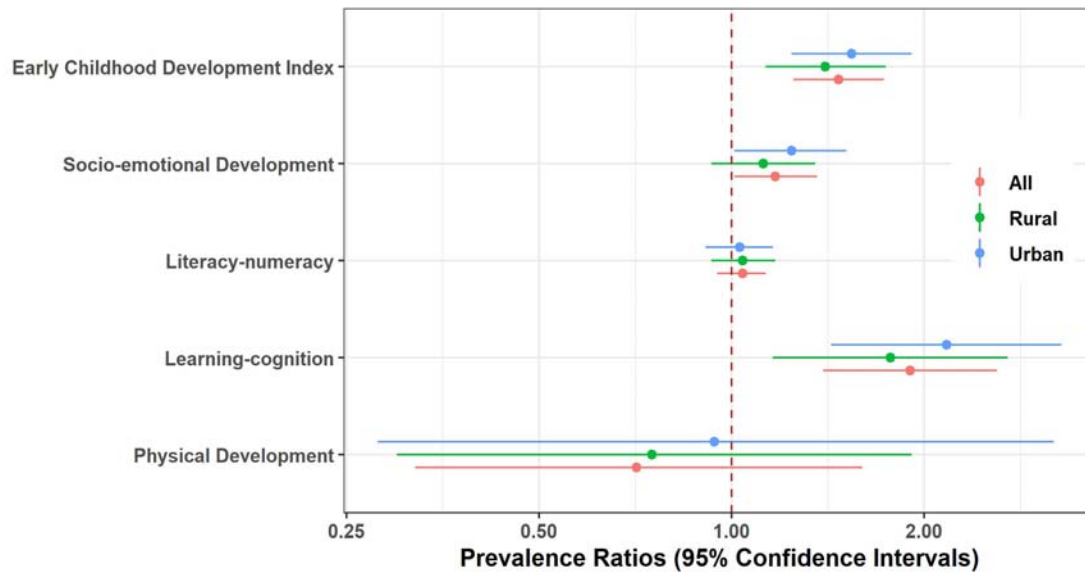


\*Models were adjusted for child age, maternal age, maternal education, household wealth quintiles, iodine, stunting, attendance to ECDEP, cooking place, urbanicity, and season (Models in table are included as supplementary files).

When exploring the effect modification by the sex of the children (Figure 3), we did not observe significant effect modification, and results were similar (p-difference= 0.210) between boys (PR: 1.37; 95% CI: 1.13, 1.65) and girls (PR: 1.64; 95% CI: 1.31, 2.07) for ECDI. Similar findings were observed for ECD sub-domains (p-difference > 0.8 for all).

When exploring the effect modification by urbanicity (Figure 4), we did not observe significant effect modification and were not significantly different (p-difference=0.450) between urban (PR: 1.54; 95% CI: 1.24, 1.91) and rural (PR: 1.40; 95% CI: 1.13, 1.74) children for global ECDI outcome. Similar effect results were observed for ECDI sub-domains (p-difference>0.2 for all).

**Figure 4: Association between SFU and ECD outcomes stratified by urbanicity of the children in Bangladesh**



\*Child sex, child age, maternal age, maternal education, household wealth quintiles, iodine, stunting, attendance to ECDEP, cooking place, and season (Models in table are included as supplementary files).

#### 4. Discussion

Our study demonstrates that Bangladeshi children aged 36-59 months exposed to SFU were more likely to be not developmentally on track than unexposed children. The results show that children exposed to SFU were more likely to have developmental delays, specifically in literacy-numeracy, socio-emotional development, and learning-cognition. We used nationally representative MICS data collected by UNICEF, in which SFU was considered as a proxy for HAP (37–40). These results are in line with a study conducted in Sri Lanka, in which the neurotoxic impact of HAP on child’s cognitive scores was observed (32). Similar experiences were observed in many other Asian countries in which SFU is highly prevalent (41–43). In these settings, it is also common for mothers to cook in the same room, where the majority of the children’s daily activities take place, as they mostly do not have a separate cooking place



(10). Hence, the complex mix of pollutants emitted from SFU increases the risk of developmental delays in younger children as they have the potential for damaging the central nervous system and affect brain development (14,25,44,45).

The findings also showed that SFU was significantly associated with specific developmental sub-domains in both boys and girls. However, unlike other studies (23) in which differences between boys and girls were found in Ghana, our study, on the other hand, did not confirm statistically significant modification effect of sex. One reason could be methodological and another theoretical. The study from Ghana did not use seasonality and place where the cooking occurs, but in our study, we have adjusted the place of cooking in the households and seasonality in the multilevel models. Theoretically, cultural practices between Ghana and Bangladesh could be different, as well. For instance, in the South-Asian countries, boys and girls may spend about the same time in outdoor activities. Moreover, a previous study showed that sex-dependent effects on neuropsychological development at 4–6years of age, with a greater vulnerability in boys, specifically in domains related to memory, verbal and general cognition (38). This study also found that other confounders such as parents' education, child age, and wealth index are significantly associated with global ECDI.

As such, this study contributes to setting specific targets and tracking progress towards meeting SDGs of 4.2: “By 2030, ensure that all girls and boys have access to quality early childhood development, care, and pre-primary education so that we can save the brain of our next generation (5,6).” Thus, it is pressing to design interventions and implementation strategies for lessening the HAP exposure from SFU and cooking places and utilizing low toxic supported technologies for cooking and improving cooking conditions to reduce the risk of not being developmentally on track in LMICs, including Bangladesh.

We observe that urban children exposed to SFU were more likely to be delayed in

ECDI and its sub-domains of socio-emotional development and learning-cognition compared to rural children, but these differences were not statistically significant. However, rural-urban differences in ECD outcomes may be because children in rural areas have more mobility and spend more time playing outdoors with other children of joint families, relatives, and neighbors. *Heissler* also showed that it is common for rural children to grow-up with other family members, including grandparents, uncles, and same-aged children in Bangladesh (46). However, there is less opportunity to play with other children and spend time with other family members and relatives who can provide more nurturing (46). Interestingly, urban children showed more learning-cognition delays compared to rural children, maybe because most urban children stay home and have less opportunity for outdoor activities. Simultaneously, it is also important to investigate children's outdoor playing time since this may also limit the effects of indoor pollution areas relatively free of external contamination, especially in rural areas as urban areas in Bangladesh experience high outdoor air pollution levels.

Despite the interesting findings of this study, there are some strengths and weaknesses. This study's primary strength is a large sample size with a representative sample of children from the whole country. Another strength is that we adjusted for potential confounders- socioeconomic and demographic variables, including child sex and age, maternal age and education, household wealth, and attendance to ECDEP and lifestyle variables are known to influence child development. However, this study has some limitations. First, our primary SFU exposure was constructed only using cooking fuel types with no direct measurements of household air pollutants' levels. In Bangladesh, many households in rural areas use animal dung or agricultural crop, which are more toxic for health and development (45). It is also essential to consider other sources of household pollutants co-exist. In this regard, it would be beneficial if MICS would collect other types of

fuels' information since this survey only provides information on SFU.

Last, the cross-sectional and observational nature of the study may not allow us to identify with more precision how SFU directly affects ECDI and to establish any specific causal link at this time. Further longitudinal studies are needed to confirm more precise causal effects of SFU on the ECD outcomes and better understand the impacts of clean cookstove interventions on child developmental milestones. However, it has been shown that estimates of the prevalence of household SFU from multi-stage probability sampling surveys can be made with more confidence than estimates of actual pollutant exposures (7). In this study, there might have recall biases on each component of ECDI. However, we have adjusted potential confounders in our analyses to minimize its effects on estimates, and data was collected from the whole country, which increases the generalizability of our findings. Despite these limitations, the lack of studies investigating the effects of SFU on child neurodevelopment in LMICs makes this study valuable and a starting point to further investigations with a better assessment of exposure to HAP, including information on stove type, cooking/heating practices, and time-activity patterns.

## **5. Conclusion**

This study showed that children exposed to SFU might have significant developmental delays compared to unexposed children, regardless of the child's sex or whether they live in rural or urban areas. Hence, we should implement some interventions to reduce SFU for ensuring better early childhood development of children in LMICs, including Bangladesh. Specifically, it is urgent to design programs to reduce HAP and its health effects, as it is a double burden for most disadvantaged kids struggling to reach their full developmental potentials (47,48). Through an effective intervention, public policies should promote a better early life environment for our younger children to meet their developmental milestones.

Hence, the policymakers must take initiatives and policies regarding clean cookstoves to reduce SFU-related morbidity and mortality. Therefore, young children can reach their full developmental potential, and such program will promote and nurture healthy and productive early brain development of our next generation.

### **Acknowledgments**

The authors are grateful to BBS and UNICEF for granting access to the Bangladesh MICS 2019 Data.

### **Authors' Contribution**

JR and YO developed the study concepts. JR, JIN, and DKM analyzed the data. JR, PLG, YO, and SEH drafted the manuscript. All authors read, critically reviewed, and approved the final version of the paper.

### **Conflict of Interest**

None declared.

### **Source of Funding**

Not supported by any funding body.

### **Ethical Approval**

The technical committee of the Government of Bangladesh lead by BBS approved the MICS 2019 survey protocol. Informed consent was taken from each participant, and adult consent was taken for child's assent before the enrollment. We obtained approval from UNICEF in March 2020 to use this publicly available data of the MICS online archive's de-identified data.

## References

1. Vos T, Abajobir AA, Abbafati C, Abbas KM, Abate KH, Abd-Allah F, et al. Global, regional, and national incidence, prevalence, and years lived with disability for 328 diseases and injuries for 195 countries, 1990-2016: A systematic analysis for the Global Burden of Disease Study 2016. *Lancet*. 2017;390(10100):1211–59.
2. Cohen AJ, Brauer M, Burnett R, Anderson HR, Frostad J, Estep K, et al. Estimates and 25-year trends of the global burden of disease attributable to ambient air pollution: an analysis of data from the Global Burden of Diseases Study 2015. *Lancet*. 2017;389(10082):1907–18.
3. Bonjour S, Adair-Rohani H, Wolf J, Bruce NG, Mehta S, Prüss-Ustün A, et al. Solid fuel use for household cooking: Country and regional estimates for 1980-2010. *Environ Health Perspect*. 2013;121(7):784–90.
4. Baul TK, Datta D, Alam A. A comparative study on household level energy consumption and related emissions from renewable (biomass) and non-renewable energy sources in Bangladesh. *Energy Policy*. 2018 Mar 1;114:598–608.
5. United Nations. Report of the inter-agency and expert group on sustainable development goal indicators. United Nations. 2016.
6. UNICEF. The formative years early childhood development The promise of investing [Internet]. New York; 2019. Available from: <https://data.unicef.org/resources/the-formative-years-unicefs-work-on-measuring-ecd/>

7. Rosenthal J, Quinn A, Grieshop AP, Pillarisetti A, Glass RI. Clean cooking and the SDGs: Integrated analytical approaches to guide energy interventions for health and environment goals. *Energy Sustain Dev.* 2018;42:152–9.
8. Po JYT, FitzGerald JM, Carlsten C. Respiratory disease associated with solid biomass fuel exposure in rural women and children: Systematic review and meta-analysis. *Thorax.* 2011 Mar;66(3):232–9.
9. Fullerton DG, Bruce N, Gordon SB. Indoor air pollution from biomass fuel smoke is a major health concern in the developing world. *Trans R Soc Trop Med Hyg.* 2008 Sep;102(9):843–51.
10. Rana J, Uddin J, Peltier R, Oulhote Y. Associations between Indoor Air Pollution and Acute Respiratory Infections among Under-Five Children in Afghanistan: Do SES and Sex Matter? *Int J Environ Res Public Health.* 2019;16(16):2910.
11. Khan MN, Nurs CZB, Islam MM, Islam MR, Rahman MM. Household air pollution from cooking and risk of adverse health and birth outcomes in Bangladesh: A nationwide population-based study. *Environ Heal A Glob Access Sci Source.* 2017;16(1):1–8.
12. Kim KH, Jahan SA, Kabir E. A review of diseases associated with household air pollution due to the use of biomass fuels. *J Hazard Mater.* 2011;192(2):425–31.
13. Tran TD, Luchters S, Fisher J. Early childhood development: impact of national human development, family poverty, parenting practices and access to early childhood education. *Child Care Health Dev.* 2017;43(3):415–26.
14. Grantham-McGregor S, Cheung YB, Cueto S, Glewwe P, Richter L, Strupp B.

Developmental potential in the first 5 years for children in developing countries.

Lancet. 2007;369(9555):60–70.

15. Block ML, Calderón-Garcidueñas L. Air pollution: mechanisms of neuroinflammation and CNS disease. *Trends Neurosci.* 2009 Sep;32(9):506–16.
16. Antonsen S, Mok PLH, Webb RT, Mortensen PB, McGrath JJ, Agerbo E, et al. Exposure to air pollution during childhood and risk of developing schizophrenia: a national cohort study. *Lancet Planet Heal.* 2020;4(2):e64–73.
17. Fang XY, Strodl E, Wu CA, Liu L, Yin XN, Wen GM, et al. Maternal cooking during pregnancy may increase hyperactive behaviors among children aged at around 3 years old. *Indoor Air.* 2019;00(1):1–11.
18. Jorcano A, Lubczyńska MJ, Pierotti L, Altug H, Ballester F, Cesaroni G, et al. Prenatal and postnatal exposure to air pollution and emotional and aggressive symptoms in children from 8 European birth cohorts. *Environ Int.* 2019;131(July):104927.
19. Calderón-Garcidueñas L, Mora-Tiscareño A, Ontiveros E, Gómez-Garza G, Barragán-Mejía G, Broadway J, et al. Air pollution, cognitive deficits and brain abnormalities: A pilot study with children and dogs. *Brain Cogn.* 2008;68(2):117–27.
20. Sunyer J, Dadvand P. Prenatal brain development as a target for urban air pollution. *Basic Clin Pharmacol Toxicol.* 2019;125(S3):81–8.
21. Bruce N, Perez-Padilla R, Albalak R. Indoor air pollution in developing countries: A major environmental and public health challenge. *Bull World Health Organ.* 2000;78(9):1078–92.
22. Rana J, Uddin J, Peltier R, Oulhote Y. Associations between Indoor Air Pollution and



- Acute Respiratory Infections among Under-Five Children in Afghanistan: Do SES and Sex Matter? *Int J Environ Res Public Health*. 2019;16(2910):1–12.
23. Nazif-muñoz JI, Spengler JD, Arku RE, Oulhote Y. Solid fuel use and early child development disparities in Ghana: analyses by gender and urbanicity. *J Expo Sci Environ Epidemiol*. 2020;(May).
24. Walker SP, Wachs TD, Grantham-Mcgregor S, Black MM, Nelson CA, Huffman SL, et al. Inequality in early childhood: Risk and protective factors for early child development. *Lancet*. 2011;378(9799):1325–38.
25. Black MM, Walker SP, H Fernald LC, Andersen CT, DiGirolamo AM, Lu C, et al. Advancing Early Childhood Development: from Science to Scale 1: Early childhood development coming of age: science through the life course Early Childhood Development Series Steering Committee HHS Public Access. *Lancet*. 2017;389(10064):77–90.
26. Walker SP, Chang SM, Powell CA, Simonoff E, Grantham-McGregor SM. Early Childhood Stunting Is Associated with Poor Psychological Functioning in Late Adolescence and Effects Are Reduced by Psychosocial Stimulation. *J Nutr*. 2007;137(11):2464–9.
27. Karimu A, Asiedu E. Energy Poverty and Classes Missed by a Child . Evidence from a Developing Energy Poverty and Classes Missed by a Child . Evidence from a Developing Country. *Univ Ghana Bus Sch*. 2018;(June).
28. Wasserman GA, Liu X, Parvez F, Ahsan H, Factor-Litvak P, van Geen A, et al. Water arsenic exposure and children’s intellectual function in Arai hazar, Bangladesh. *Environ Health Perspect*. 2004;112(13):1329–33.

29. Wasserman GA, Liu X, Parvez F, Ahsan H, Levy D, Factor-Litvak P, et al. Water manganese exposure and children's intellectual function in Araidhazar, Bangladesh. *Environ Health Perspect*. 2006;114(1):124–9.
30. Khan S, Hancioglu A. Multiple Indicator Cluster Surveys: Delivering Robust Data on Children and Women across the Globe. *Stud Fam Plann*. 2019;50(3):279–86.
31. Bangladesh Bureau of Statistics (BBS) and UNICEF Bangladesh. Progotir Pathey, Bangladesh Multiple Indicator Cluster Survey 2019, Survey Findings Report. Dhaka; 2019.
32. Lertxundi A, Andiarena A, Martínez MD, Ayerdi M, Murcia M, Estarlich M, et al. Prenatal exposure to PM<sub>2.5</sub> and NO<sub>2</sub> and sex-dependent infant cognitive and motor development. *Environ Res*. 2019;174(2):114–21.
33. Sentís A, Sunyer J, Dalmau-Bueno A, Andiarena A, Ballester F, Cirach M, et al. Prenatal and postnatal exposure to NO<sub>2</sub> and child attentional function at 4–5 years of age. *Environ Int*. 2017;106(2):170–7.
34. Barros, Aluisio JD and Hiraakata VN. Alternatives for logistic regression in cross-sectional studies: an empirical comparison of models that directly estimate the prevalence ratio. *BMC Med Res Methodol*. 2003;3(21).
35. R Core Team. R: A language and environment for statistical computing [Internet]. Vienna, Austria: R Foundation for Statistical Computing, Vienna, Austria.; 2020. Available from: <https://www.r-project.org/>
36. StataCorp. Stata Statistical Software: Release 16. College Station, TX: StataCorp LP; 2019.

37. Owili PO, Muga MA, Pan WC, Kuo HW. Cooking fuel and risk of under-five mortality in 23 Sub-Saharan African countries: a population-based study. *Int J Environ Health Res.* 2017;27(3):191–204.
38. Adaji EE, Ekezie W, Clifford M, Phalkey R. Understanding the effect of indoor air pollution on pneumonia in children under 5 in low- and middle-income countries: a systematic review of evidence. *Environ Sci Pollut Res.* 2019;26(4):3208–25.
39. Balakrishnan K, Dey S, Gupta T, Dhaliwal RS, Brauer M, Cohen AJ, et al. The impact of air pollution on deaths, disease burden, and life expectancy across the states of India: the Global Burden of Disease Study 2017. *Lancet Planet Heal.* 2019;3(1):e26–39.
40. Gordon SB, Bruce NG, Grigg J, Hibberd PL, Kurmi OP, Lam K bong H, et al. Respiratory risks from household air pollution in low and middle income countries. Vol. 2, *The Lancet Respiratory Medicine.* 2014. p. 823–60.
41. Rana J, Khan MN, Aliani R, Islam RM. Effect of indoor air pollution on infant and child-mortality in Myanmar: Evidence from the first Demographic and Health Survey. *medRxiv.* 2019 Jan 1;19010801.
42. Midouhas E, Kokosi T, Flouri E. The quality of air outside and inside the home: Associations with emotional and behavioural problem scores in early childhood. *BMC Public Health.* 2019;19(1):1–10.
43. Kurata M, Takahashi K, Hibiki A. Gender differences in associations of household and ambient air pollution with child health: Evidence from household and satellite-based data in Bangladesh. *World Dev.* 2020;128:104779.

44. Tran TD, Luchters S, Fisher J. Early childhood development: impact of national human development, family poverty, parenting practices and access to early childhood education. *Child Care Health Dev.* 2017;
45. Brockmeyer S, D'Angiulli A. How air pollution alters brain development: The role of neuroinflammation. *Transl Neurosci.* 2016;7(1):24–30.
46. Heissler K. Children's migration for work in Bangladesh: the policy implications of intra-household relations. *Dev Pract.* 2012;22(4):498–509.
47. McCoy DC, Peet ED, Ezzati M, Danaei G, Black MM, Sudfeld CR, et al. Early Childhood Developmental Status in Low- and Middle-Income Countries: National, Regional, and Global Prevalence Estimates Using Predictive Modeling. *PLoS Med.* 2016;13(6):1–18.
48. Walker SP, Wachs TD, Grantham-mcgregor S, Black MM, Nelson CA, Huff SL, et al. Child Development 1 Inequality in early childhood: risk and protective factors for early child development. *Lancet.* 2011;378:1325–38.