

Trends in body mass index and blood pressure associations from 1989 to 2018: co-ordinated analysis of 145,399 participants

David Bann¹, Shaun Scholes², Rebecca Hardy³, Dara O'Neill³

¹Centre for Longitudinal Studies, Social Research Institute, University College London, London, UK

²Department of Epidemiology and Public Health, University College London, London, UK

³CLOSER, Social Research Institute, University College London, London, UK

Background: High body mass index (BMI) is an important contributor to higher blood pressure (BP) levels and its deleterious consequences. However, the strength of this association may be context-specific and differ across time due to increases in medication use or secular changes in body composition. Thus, we utilised two independent data sources to investigate if associations between BMI and systolic BP (SBP) in Britain changed from 1989-2018.

Methods: We used 23 repeated cross-sectional datasets—the Health Survey for England (HSE) at ≥ 25 years (1994–2018; N=126,742); and three British birth cohorts (born 1946, 1958, and 1970) with outcomes available at 43–46 years (N=18,657). Anthropometry and BP were measured using standard protocols. We used linear and quantile regression to investigate cross-sectional associations between BMI and SBP.

Results: In HSE, associations were weaker in subsequent years, and this trend was most pronounced amongst older adults—after accounting for sex, treatment and education, the mean difference in SBP per 1 kg/m² increase in BMI amongst adults ≥ 55 years was 0.75mmHg (95% CI: 0.60, 0.90) in 1994, 0.66mmHg (0.46, 0.85) in 2003, and 0.53mmHg (0.35, 0.71) in 2018. In cohorts, BMI and SBP associations were of similar magnitude in 1958 and 1970 cohorts and weaker in the 1946 cohort. Quantile regression analyses suggested that associations between BMI and SBP were present both below and above the hypertension threshold.

Conclusion: The consequences of BMI may differ across time and by age —associations between BMI and SBP appear to have weakened in recent decades, particularly in older ages. Thus, at older ages, this weakening strength of association may partly offset the public health impacts of increases in obesity prevalence. However, BMI remains positively associated with SBP in all adult age groups, highlighting the potential adverse consequences of the ongoing obesity epidemic.

Introduction

High body mass index (BMI) is an important modifiable determinant of high blood pressure (BP), as evidenced by meta-analyses of observational studies¹ and weight-loss reduction interventions.² While providing precise estimates of association between BMI and BP, such studies have not elucidated whether the relationship between BMI and BP has changed across time. Evidence from two British birth cohorts born in 1946 and 1958 suggested an approximate doubling of the positive correlation between BMI and BP in midlife from 1989 to 2003.³ Other studies have reported increasing strength of association, yet used hypertension as the sole outcome^{4,5} (defined as elevated BP or use of BP lowering treatment) and thus may be simply reflecting increases in treatment use.⁶ In contrast, other studies have reported weakening of the association,^{7,8} or reported no clear systematic change.⁶

Understanding whether the associations between BMI and BP have changed across time is important to inform the future public health responses to obesity, the prevalence of which has increased markedly since the 1980s⁹⁻¹¹ and may continue to increase. Indeed, projections suggest as many as 40-50% of the UK and US population may be obese by 2030.¹² If the risks of rising BMI on raised BP levels are also increasing, then the public health impacts of BMI may be greater than anticipated given the importance of high BP for a range of cardiovascular¹³ and neurological outcomes.^{14,15}

Multiple factors could explain why associations between BMI and BP may differ across time.¹⁶ Recent decades have seen improvements in hypertension awareness, detection, and treatment—notably via increased use of antihypertensive medication.¹⁷ Such interventions, along with behavioural changes triggered at least in part by hypertension diagnosis in primary care,¹⁸ may weaken such associations by lowering raised BP levels amongst those at highest cardiovascular risk, including those with higher BMI. However, hypertension treatment is only applicable to the relative minority (<25%¹⁹) of the population above specified hypertension treatment thresholds and even if initiated it may not fully normalise BP levels.^{20,21} Further, obtaining long-term changes to risk factors such as diet and physical activity is notoriously challenging. Other changes which may also impact on the strength of BMI and BP associations include secular changes to body composition—a high BMI may reflect more fat mass in more recent decades,^{22,23} and since high fat rather than high muscle mass is thought to impact on high BP², associations may in turn strengthen across time.

We investigated whether BMI and BP associations systematically changed across time in Britain—from 1989 to 2018—employing data from two sources historically used separately: birth cohort studies and repeated cross-sectional studies. Each has complementary advantages. The birth cohorts

have comparable BP measures obtained in midlife—a purportedly important period for cardiovascular risk²⁴⁻²⁶—and early life measures of potential confounding factors. Cross-sectional studies in turn collect data more regularly and generalise to a broader age span.

Methods

We used two data sources 1) 23 repeated cross-sectional studies (Health Survey for England²⁷), with anthropometrics and BP measured in samples of adults (annually from 1994 to 2018, except 1999 and 2004 where BP was measured only among minority ethnic groups); and 2) three British birth cohort studies of persons born in 1946 (1946c), 1958 (1958c) and 1970 (1970c), with anthropometrics and BP measured in midlife (in 1989, 2003, and 2016; see cohort profiles²⁸⁻³⁰). For each, participants gave verbal and/or written consent to be interviewed, visited by a nurse, and to have weight, height, and BP measurements taken during a home visit via standardised protocols. BMI was calculated as weight (kg) divided by the square of height (m²). The protocols for BP measurement have been described elsewhere.³¹ Briefly, each study used standardised protocols after 5 minute rest periods. Omron devices were used in 1958c (705CP) and 1970c (HEM-907), and in HSE from 2003 onwards. 1946c used the Hawksley random zero sphygmomanometer and HSE before 2003 used the Dinamap 8100 monitor. The 1946c and pre-2003 HSE data were converted to Omron measures using previously published regression equations based on calibration studies.^{32 33} Research ethics approval was obtained from relevant committees. Details of these studies and the measurement protocols are available elsewhere.³¹

The analytical sample size was 145,399—those with outcomes at age 43-46 years (cohorts; N=18,657) or 25 years and over (HSE; N=136,942 with BP data; N=126,742 with both BMI and BP data). The primary outcome for our study was the continuous level of systolic BP (SBP), chosen a priori given its strong link with cardiovascular disease and mortality;¹³ diastolic BP (DBP) was used as a secondary outcome.

Analytical strategy

Our main analyses accounted for reported use of BP lowering treatment since changes in treatment use could potentially confound time-trend differences in BMI and BP associations.⁶ We accounted for the expected average effects of antihypertensive medication use on BP by adding a constant of 10mmHg (SBP) and 5mmHg (DBP) to the observed BP values amongst those on treatment. This approximates “underlying” BP (i.e. the BP individuals would have if they were not on treatment);³⁴ this (constant addition) method has been found to reduce bias in the estimated effect of key determinants on continuous levels of BP due to the effects of antihypertensive medication use.^{20 21}

The birth cohort and HSE datasets were analysed separately. Data from each source was analysed overall (i.e., pooled across cohorts / survey years) as well as separately by birth cohort / survey year. We first plotted histograms of BMI and BP, and then used linear regression to estimate mean difference in SBP per unit increase in BMI. Analyses were first adjusted for sex and then education attainment—a potential confounder (common cause of both BMI and BP levels^{31 35}), included as a categorical term comprising four groups: degree/higher (reference), A levels/diploma, O Levels/GCSEs/vocational equivalent, or none.³⁶ A formal test of change across time in the BMI and BP association was examined in the pooled HSE dataset by fitting interaction terms (a negative sign indicated a weakening association in subsequent years). Trend analysis was conducted separately in two time-periods (1994-2002 and 2003-2018) to examine the influence of change in BP device and introduction of non-response weights. In cohort studies, in which lifetime socioeconomic position (SEP) data were available, additional adjustment was made for social class at birth, maternal education in childhood, and own social class at 43-46y. HSE models additionally adjusted for age. Given body composition³⁷ and treatment use differences by age,¹⁷ the BMI and SBP association may differ by age—as such, we conducted additional analyses in HSE in younger (25-54 years; N=73,750) and older age groups (55+ years; N=52,992). HSE analyses were also restricted to 40-49 year olds (N=25,941) to compare with cohort data. We additionally conducted analyses separately in men and women to investigate if time-trends in BMI and SBP associations differed by sex.

In addition to linear regression, quantile regression³⁸ on data pooled across cohorts / survey years (HSE) was used to estimate whether the observed mean difference in SBP per unit increase in BMI were driven by differences at the upper or lower part of the SBP distribution; such analyses help inform the possible impact of treatment use on BMI and BP associations. Estimates were obtained and plotted at the 5th, 10th, 25th, 50th (median), 75th, 90th, and 95th quantiles. To facilitate interpretation we plotted the quantiles corresponding to the 140mmHg SBP threshold for initiating BP lowering treatment.¹⁸

To address data missingness, multiple imputation by chained equations was completed, with 20 imputations performed for the cohort pooled data and 20 each for the sex-stratified cohort datasets (including all SEP indicators). For the HSE data, weighting was used in lieu of multiple imputation. Starting from 2003, weights have been created to minimise bias from non-response (including non-participation in the nurse visit among those interviewed at the first stage); the relevant weights for analysing BP data were therefore used from 2003 onwards.

Results

In later (2016/18) compared with earlier years (1989-2004), mean BMI and obesity prevalence (BMI $\geq 30 \text{ kg/m}^2$) were higher (Table 1), and the distributions of BMI were wider and more right-skewed (Supplementary Figure 1). In HSE but not cohort datasets, mean SBP and hypertension prevalence (140/90mmHg and/or on BP-lowering medication) were lower in later years—the distributions of SBP were more normally distributed than BMI in each year (Supplementary Figure 1). The use of BP-lowering medication was more frequent in later years in both data sources; in contrast, DBP levels were lower in both later cohorts and HSE survey years (Table 1).

Associations between BMI and SBP

BMI was positively associated with SBP in all HSE survey years and cohorts—the trends in this association (by survey year/cohort) were similar before and after accounting for treatment, education attainment, and (in cohorts) multiple SEP indicators across life (Supplementary Figure 2).

In HSE across all ages (≥ 25 years), BMI-SBP associations were weaker in subsequent years (Figure 1; BMI*year interaction term: $\beta = -0.011$ (95% CI: -0.014, -0.008)). In analyses stratified by age group the association between BMI and SBP was stronger in younger (25-54 years) compared with older (≥ 55 years) ages (Figure 2). However, a weakening of association across time was more pronounced among older adults—mean differences in SBP per 1 kg/m^2 increase in BMI (after accounting for treatment and education) were 0.75mmHg (0.60, 0.90) in 1994, 0.66mmHg (0.46, 0.85) in 2003, and 0.53mmHg (0.35, 0.71) in 2018. Owing to the lower sample sizes in the older age group, confidence intervals were wider. Consistent with this interpretation, evidence for a weakening association in subsequent years was stronger in older (BMI*year interaction term: $\beta = -0.010$ (-0.015, -0.005)) compared with younger adults ($\beta = -0.006$ (-0.009, -0.003)), yet confidence intervals overlapped. Trend analysis conducted separately in 1994-2002 and 2003-2018 (when HSE changed BP measurement device and non-response weights were introduced) yielded similar findings (Supplementary Table 1). Across all time points there was considerable year-to-year variability in the magnitude of association such that comparisons restricted to two survey years may lead to misleading conclusions regarding long-term trends.

In cohorts (SBP measures at 43-46y only), the magnitude of association was substantially smaller in 1946c; magnitudes were highest in 1958c and slightly weaker in 1970c—the mean difference in SBP per 1 kg/m^2 increase in BMI (after accounting for treatment and all SEP indicators) was 0.30mmHg (0.10, 0.49) in 1946c, 0.83mmHg (0.76, 0.90) in 1958c, and 0.79mmHg (0.72, 0.85) in 1970c (Figure

1). Analyses using HSE found, in comparison with analyses in older adults (≥ 55 years), weaker evidence for systematic change among 40–49 year olds (Supplementary Figure 3; BMI*year interaction term, $\beta = -0.002$ (-0.007, 0.003)).

In HSE, the magnitude of associations between BMI and DBP were weaker prior to 2003, highest in 2003, and weaker in 2018 (Supplementary Figure 4). In cohort analyses, results using DBP yielded comparable results to those for SBP: associations between BMI and DBP were similarly weaker in 1946c, and higher in 1958c and 1970c (Supplementary Figure 4). Trends in the association between BMI and SBP were largely similar in men and women in HSE and cohort datasets (Supplementary Figure 5).

Quantile regression analyses

Results of quantile regression analyses on data pooled across cohorts / survey years suggested that associations between BMI and SBP were present across the BP distribution—below and above the hypertension treatment threshold—yet were larger at upper SBP values (Figure 3 shows findings after accounting for treatment—findings were similar when not accounting for treatment). For example, in cohort-pooled analyses there was a 0.72mmHg (0.67–0.78) difference in SBP at the 50th quantile (median), per 1 kg/m² increase in BMI, yet a 0.92mmHg (0.80–1.03) difference in SBP at the 90th quantile. Findings were similar in HSE (Figure 2).

Discussion

Using data from 23 cross-sectional datasets, we found that associations between BMI and SBP were weaker from 1994 to 2018; this trend was strongest in older (≥ 55 years) compared with younger (25–54 years) adults. Analysis of three birth cohorts with data in midlife (43–46 years) did not provide clear evidence of systematic trend in the association; in repeated cross-sectional data, there was weaker evidence for systematic change in the equivalent age group (40–49 years). However, BMI remained positively associated with SBP in all age groups, highlighting the future adverse consequences of the ongoing obesity epidemic.

The apparent discrepancy in findings between HSE and cohort results requires explanation. The fact that the increasing strength of the cross-sectional BMI-SBP associations previously reported (from 1946c to 1970c—ie, 1989 to 2000)³ were not found in 1970c, nor in the 23 HSE datasets used (1994–2018), suggests that this finding may be attributable to particular features of the 1946c rather than reflecting a long-term trend. This may include chance differences in findings due to the sampling—1946c was sampled in one week of March 1946, and only married mothers were included.³⁹

Unobserved differences in BMI and BP measurement protocols could have also contributed to such differences. More measurement error in calculating BMI would lead to a weakening of BMI-BP associations (due to regression dilution bias⁴⁰), yet is an unlikely candidate for the cohort difference in association since similar protocols for measuring height and weight were used in each cohort.

Notably, the BP devices used differed in each cohort. While the weaker BMI-BP association in 1946c was observed both before and after applying calibration equations to account for device differences (data available on request), it is possible that the calibration did not calibrate BP measures equivalently. Indeed, the mean difference in SBP per 1 kg/m² increase in BMI at a later age in 1946c (53 years, when an Omron device was used) was substantially larger than at 43y (β (at 53 years) = 1.09mmHg (0.91–1.27) after accounting for treatment, vs 0.34mmHg (0.14–0.53) at 43 years). Such discrepancies may also explain the finding that BMI-DBP associations were weaker in HSE prior to 2003, coinciding with a similar change in device. If the older BP devices are responsible for these weaker associations with BMI in the 1946c and in HSE 1994–2002, it suggests that differential error has occurred (e.g., systematic underestimation of BP among those with higher BMI, or overestimation amongst those with lower BMI). Datasets with BP measures obtained using multiple devices and measured anthropometrics are required to test this possibility—it has broader implications given the possibility that it may bias comparisons made within- (i.e., longitudinally) and between-cohorts.

Our study extends and potentially clarifies the equivocal existing literature which examined trends across time in cross-sectional BMI-BP associations.^{3–8 41 42} To our knowledge, the present study is the

largest and most comprehensive investigation of this issue conducted thus far. We used two different studies with complementary features, accounted for treatment and multiple SEP indicators, and examined associations by age group. Two previous studies (in the US and Japan) reported an increasing strength of association.^{4 5} However, these and other studies⁴¹ used hypertension as an outcome (i.e., high BP and/or use of BP lowering treatment), and their findings may thus be solely explained by the secular trend of rising treatment use (increasing hypertension prevalence disproportionately among those at highest cardiovascular risk) rather than changes in the BMI and BP association per se.⁶

In studies that used continuous BMI and BP measures, weakening of association across time has also been observed in studies conducted in Germany (1998 to 2011),⁸ the Seychelles (1989 vs 2004),⁷ and the US (1993 to 2007 and 2005 to 2012, in some but not all model specifications).⁶ Another in contrast reported a strengthening relationship in Taiwan (1998 to 2006),⁴² yet this study was restricted to a ‘healthy sample’ aged 20-59yrs who were free of common chronic diseases and who were not on long-term medication (including antihypertensives). Finally, we extend the existing literature by utilising quantile regression analysis—findings of which suggest that the influence of BMI on SBP appears to be present across the SBP distribution (below and above the hypertension treatment threshold).

The magnitude of BMI and underlying BP associations is likely modified both by factors which could weaken the association across time (such as reduced salt intake amongst those with higher BMI) and those which strengthen it (such as a higher fat mass for a given BMI value in more recent decades). Our findings suggesting persistent associations from 2003 to 2018 amongst younger-middle aged adults implies that these differing processes may have offset each other, leading to similar magnitudes of association. In older adults, the relative balance of these factors seemingly led to a weakening of association across time. While we lack direct evidence for increases in fat mass percent in this study context, evidence from the US and elsewhere does suggest that it may have occurred along with the increasing obesity epidemic.^{22 23} Recent public health initiatives in the UK have included screening programmes for higher BP levels amongst those at highest CVD risk,^{43 44} leading to increases in hypertension diagnosis and treatment amongst those with high BMI.⁴⁵ While treatment has increased, as observed in our data, it has seemingly had a modest effect on BMI and BP associations, particularly in younger age groups. This is evidenced by 1) our analysis accounting for treatment, and 2) quantile regression analyses suggesting that much of the association between BMI and SBP is present below the 140mmHg threshold for hypertension treatment. Changes in health behaviours may also have played a role in these processes. Salt intake has declined in the UK in recent decades,⁴⁶ and this may have been particularly beneficial to those with higher BMI. Further weakening of the link between

BMI and BP could feasibly be achieved by additional improvements to the risk factor profile amongst those with higher BMI—such as reduced salt and calorie intake, and increases in physical activity.

Strengths and limitations

Strengths include the use of multiple birth cohort and cross-sectional datasets—each data source has independent sampling, and complementary strengths (e.g., annual data available across all ages in HSE, and more detailed SEP data in cohort studies with a larger sample size at midlife), enabling more robust inferences regarding the main findings than either data source in isolation.

While our analysis accounted for the potential confounding role of socioeconomic factors, we cannot exclude the possibility of other unmeasured confounding factors. Many plausible confounders—such as preceding ill health and behavioural factors which influence both BMI and BP—are likely to be partly but imperfectly captured by SEP given their social patterning. We also accounted for missing data, by using multiple imputation and analytical weights, yet similarly cannot exclude the possibility that unmeasured factors associated with non-response may have biased our findings. The introduction of analytic weights in the HSE series in 2003 means that comparison of trends in association before and after this year should be treated with caution. Finally, while the contribution of treatment use was estimated to be minimal, our approximation of its effect on BMI-BP associations is imperfect owing to a lack of data on treatment, dose, and adherence.⁶

Conclusion

The consequences of BMI may differ by both time period and age group—associations between BMI and SBP appear to have weakened in recent decades, particularly at older ages. This trend is less evident at younger ages—assuming causal relations between BMI and SBP, given increases in obesity prevalence in this age group, the population impact of BMI on SBP levels may be greater now than in the past. At older ages, the weakening strength of association may offset the impact of increases in obesity prevalence at the population level. However, BMI remains positively associated with SBP in all age groups, highlighting the future adverse consequences of the ongoing obesity epidemic. Finally, our results highlight the utility of using multiple datasets to obtain robust inferences regarding trends in risk factor-outcome associations across time; and the potential limitations of drawing inferences on long-term trends when comparing only two time-points.

Funding

DB is supported by the Economic and Social Research Council (grant number ES/M001660/1), The Academy of Medical Sciences / Wellcome Trust (“Springboard Health of the Public in 2040” award: HOP001/1025), and Medical Research Council (MR/V002147/1). The HSE is funded by NHS Digital; SS is funded to conduct the annual HSE. RH is Director of CLOSER which is funded by the Economic and Social Research Council (award reference: ES/K000357/1). The funders had no role in study design, data collection and analysis, decision to publish, or preparation of the manuscript.

Table 1. Participant characteristics: data from 23 repeated cross-sectional English studies and three British birth cohort studies

	Repeated cross-sectional study (≥ 25 y), year of outcome measurement			Birth cohort study in midlife (43-46y), year of outcome measurement (birth year)		
	1994	2003	2018	1989 (1946)	2003 (1958)	2016 (1970)
Sample size	11427	7910	3748	3186	8610	6861
25-54	7122	4487	1771	-	-	-
55+	4305	3423	1977	-	-	-
Outcomes						
Systolic blood pressure, mean (SD) mmHg*	133.6 (18.3)	129.9 (19.1)	125.3 (16.8)	125.9 (15.5)	126.4 (17.0)	124.1 (15.5)
Diastolic blood pressure, mean (SD) mmHg*	75.1 (8.9)	74.9 (11.5)	73.4 (11.2)	81.6 (10.4)	78.8 (11.1)	77.1 (11.2)
Hypertension, %**	35.5%	33.8%	31.6%	23.8%	28.4%	24.1%
Blood-pressure lowering medication, %	13.5%	14.3%	18.6%	3.8%	6.1%	7.5%
Adjusted systolic blood pressure, mean (SD) mmHg***	134.9 (19.5)	131.3 (20.4)	127.1 (18.3)	126.3 (15.8)	127.0 (17.4)	124.9 (16.1)
Adjusted diastolic blood pressure, mean (SD) mmHg***	75.8 (9.3)	75.6 (11.7)	74.3 (11.4)	81.8 (10.5)	79.1 (11.3)	77.5 (11.5)
Body mass index, mean (SD) kg/m ²	26.2 (4.3)	27.4 (4.9)	27.9 (5.6)	25.6 (4.2)	27.4 (4.9)	28.4 (5.5)
Obesity, %	16.4	24.5	29.7	12.6%	44.7%	46.9%
Socioeconomic data						
Social class at birth-4y, % manual	-	-	-	74.4%	70.2%	64.7%
Own education attainment, % degree	11.1%	19.3%	32.7%	6.6%	9.2%	27.3%

Notes: With valid BP data. *Observed BP values (i.e. not adjusted for use of antihypertensive medication); HSE sample size is unweighted, estimates are weighted (2003 and 2018). **Hypertension: SBP/DBP \geq 140/90mmHg and/or on BP lowering medication. ***BP values adjusted for use of antihypertensive medication (by adding a constant of 10mmHg to SBP and 5mmHg to DBP for those using antihypertensive medication). Estimates for BP include participants with missing BMI.

Health Survey for England:

Cohorts:

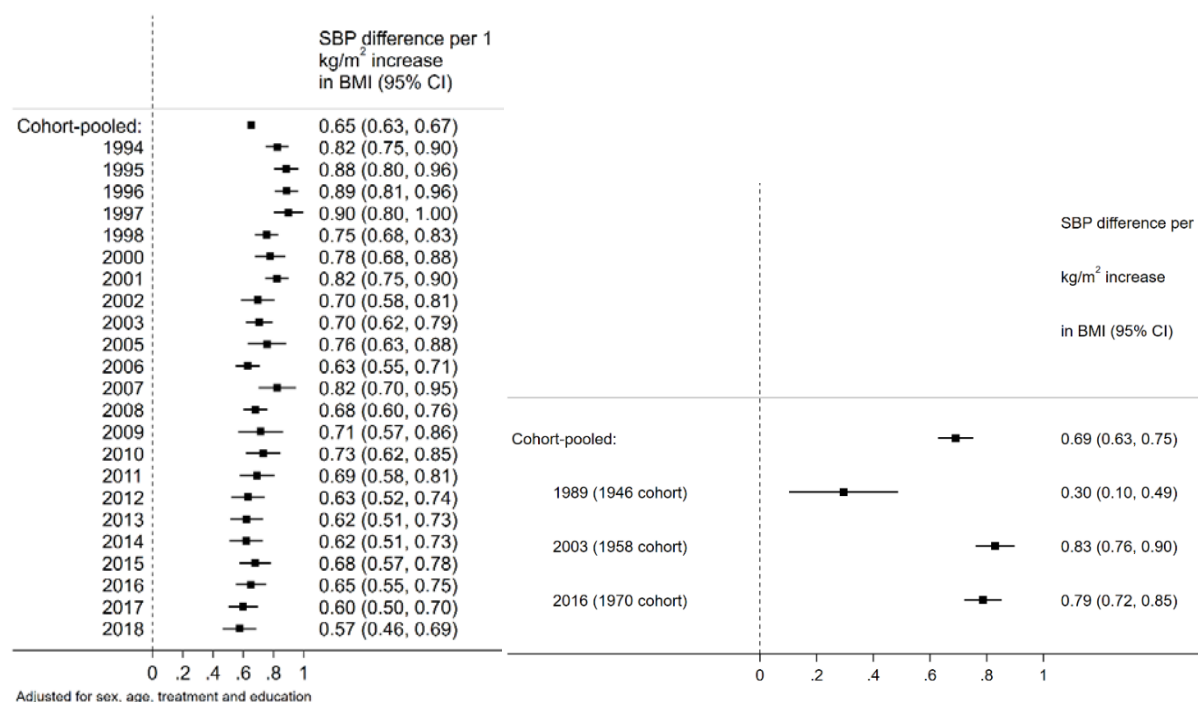


Figure 1. Associations between body mass index (kg/m²) and systolic blood pressure (mmHg) across adulthood (≥ 25 years, from repeated cross-sectional data, left panel), and midlife (43-46 years, from birth cohort data, right panel). Note: SBP values adjusted for use of antihypertensive medication (by adding a constant of 10mmHg for those using antihypertensive medication). Cohort models adjusted for mother's education and cohort member's own education, social class at birth, and social class in midlife.

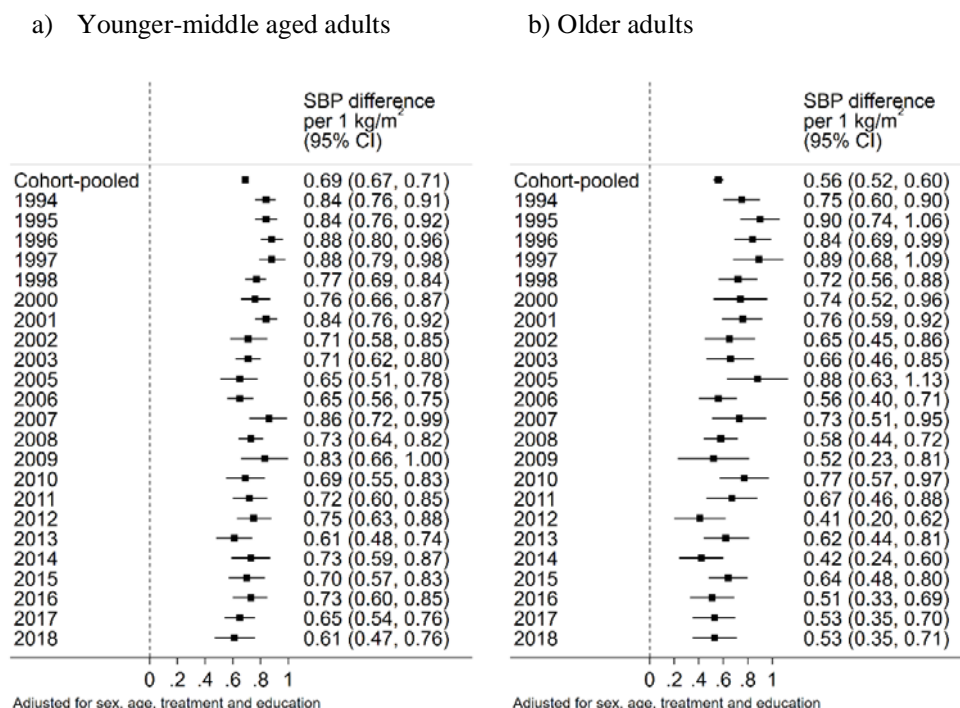
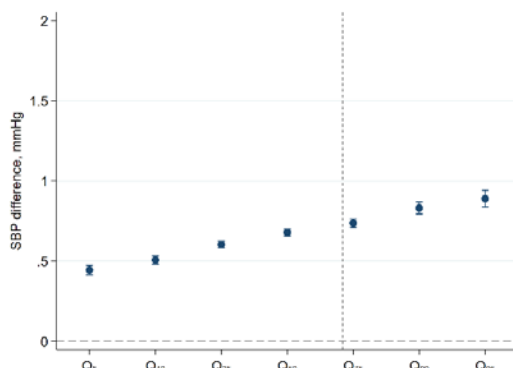


Figure 2. Associations between body mass index (kg/m²) and systolic blood pressure (mmHg) in 25-54 years (left panel) and 55+ years (right panel, from repeated cross-sectional data). Note: SBP values adjusted for use of antihypertensive medication (by adding a constant of 10mmHg for those using antihypertensive medication).

Health Survey for England:



Cohorts:

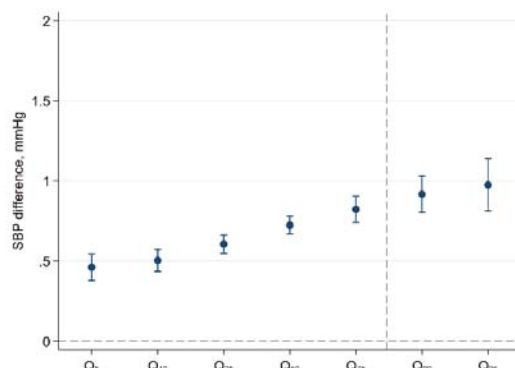


Figure 3. Associations between body mass index and systolic blood pressure quantiles (mmHg) across adulthood (≥ 25 years, from repeated cross-sectional data, left panel), and midlife (43-46 years, from birth cohort data, right panel). Note: SBP values adjusted for use of antihypertensive medication (by adding a constant of 10mmHg for those using antihypertensive medication; estimates are adjusted for sex and education attainment.

References

1. Jayedi A, Rashidy-Pour A, Khorshidi M, et al. Body mass index, abdominal adiposity, weight gain and risk of developing hypertension: a systematic review and dose–response meta-analysis of more than 2.3 million participants. *Obes Rev* 2018;19(5):654-67.
2. Neter JE, Stam BE, Kok FJ, et al. Influence of weight reduction on blood pressure: a meta-analysis of randomized controlled trials. *Hypertension* 2003;42(5):878-84.
3. Li L, Hardy R, Kuh D, et al. Life-course body mass index trajectories and blood pressure in mid life in two British birth cohorts: stronger associations in the later-born generation. *Int J Epidemiol* 2015;44(3):1018-26.
4. Nagai M, Ohkubo T, Murakami Y, et al. Secular trends of the impact of overweight and obesity on hypertension in Japan, 1980–2010. *Hypertens Res* 2015;38(11):790-95.
5. Ryu S, Frith E, Pedisic Z, et al. Secular trends in the association between obesity and hypertension among adults in the United States, 1999–2014. *Eur J Intern Med* 2019;62:37-42.
6. Tanamas SK, Hanson RL, Nelson RG, et al. Effect of different methods of accounting for antihypertensive treatment when assessing the relationship between diabetes or obesity and systolic blood pressure. *J Diabetes Complications* 2017;31(4):693-99.
7. Danon-Hersch N, Chiolerio A, Shamlaye C, et al. Decreasing association between body mass index and blood pressure over time. *Epidemiology* 2007:493-500.
8. Adler C, Rosario AS, Diederichs C, et al. Change in the association of body mass index and systolic blood pressure in Germany—national cross-sectional surveys 1998 and 2008–2011. *BMC Public Health* 2015;15(1):705.
9. Ng M, Fleming T, Robinson M, et al. Global, regional, and national prevalence of overweight and obesity in children and adults during 1980–2013: a systematic analysis for the Global Burden of Disease Study 2013. *Lancet* 2014;384(9945):766-81.
10. Finucane MM, Stevens GA, Cowan MJ, et al. National, regional, and global trends in body-mass index since 1980: systematic analysis of health examination surveys and epidemiological studies with 960 country-years and 9.1 million participants. *Lancet* 2012;377(9765):557-67.
11. NCD Risk Factor Collaboration. Trends in adult body-mass index in 200 countries from 1975 to 2014: a pooled analysis of 1698 population-based measurement studies with 19.2 million participants. *Lancet* 2016;387(10026):1377-96.
12. Wang YC, McPherson K, Marsh T, et al. Health and economic burden of the projected obesity trends in the USA and the UK. *Lancet* 2011;378(9793):815-25.
13. Bundy JD, Li C, Stuchlik P, et al. Systolic blood pressure reduction and risk of cardiovascular disease and mortality: a systematic review and network meta-analysis. *JAMA cardiology* 2017;2(7):775-81.
14. Sharp SI, Aarsland D, Day S, et al. Hypertension is a potential risk factor for vascular dementia: systematic review. *Int J Geriatr Psychiatry* 2011;26(7):661-69.
15. Shah K, Qureshi SU, Johnson M, et al. Does use of antihypertensive drugs affect the incidence or progression of dementia? A systematic review. *The American journal of geriatric pharmacotherapy* 2009;7(5):250-61.
16. Critchley JA, Cooper RS. Blood pressures are going down worldwide—but why? *Int J Epidemiol* 2018;47(3):884-86.

17. Zhou B, Danaei G, Stevens GA, et al. Long-term and recent trends in hypertension awareness, treatment, and control in 12 high-income countries: an analysis of 123 nationally representative surveys. *Lancet* 2019
18. National Institute for Health and Care Excellence. Hypertension in adults: diagnosis and management.: NICE London; 2019 [Available from: <https://www.nice.org.uk/guidance/ng136/resources/hypertension-in-adults-diagnosis-and-management-pdf-66141722710213> accessed 20/08/2020 2020.
19. Zhou B, Bentham J, Di Cesare M, et al. Worldwide trends in blood pressure from 1975 to 2015: a pooled analysis of 1479 population-based measurement studies with 19· 1 million participants. *Lancet* 2017;389(10064):37-55.
20. Tobin MD, Sheehan NA, Scurrah KJ, et al. Adjusting for treatment effects in studies of quantitative traits: antihypertensive therapy and systolic blood pressure. *Stat Med* 2005;24(19):2911-35.
21. Balakrishnan P, Beaty T, Young JH, et al. Methods to estimate underlying blood pressure: The Atherosclerosis Risk in Communities (ARIC) Study. *PLoS One* 2017;12(7)
22. Nagel G, Wabitsch M, Galm C, et al. Secular changes of anthropometric measures for the past 30 years in South-West Germany. *Eur J Clin Nutr* 2009;63(12):1440-43.
23. Sun SS, Deng X, Sabo R, et al. Secular trends in body composition for children and young adults: The fels longitudinal study. *Am J Hum Biol* 2012;24(4):506-14. doi: 10.1002/ajhb.22256
24. Gottesman RF, Schneider AL, Zhou Y, et al. Association between midlife vascular risk factors and estimated brain amyloid deposition. *JAMA* 2017;317(14):1443-50.
25. Lane CA, Barnes J, Nicholas JM, et al. Associations between blood pressure across adulthood and late-life brain structure and pathology in the neuroscience substudy of the 1946 British birth cohort (Insight 46): an epidemiological study. *The Lancet Neurology* 2019
26. Wills AK, Lawlor DA, Matthews FE, et al. Life Course Trajectories of Systolic Blood Pressure Using Longitudinal Data from Eight UK Cohorts. *PLoS Med* 2011;8(6):e1000440. doi: 10.1371/journal.pmed.1000440
27. Mindell J, Biddulph JP, Hirani V, et al. Cohort profile: the health survey for England. *Int J Epidemiol* 2012;41(6):1585-93.
28. Wadsworth M, Kuh D, Richards M, et al. Cohort profile: The 1946 National Birth Cohort (MRC National Survey of Health and Development). *Int J Epidemiol* 2006;35(1):49-54.
29. Power C, Elliott J. Cohort profile: 1958 British birth cohort (National Child Development Study). *Int J Epidemiol* 2006;35(1):34-41.
30. Elliott J, Shepherd P. Cohort profile: 1970 British birth cohort (BCS70). *Int J Epidemiol* 2006;35(4):836-43.
31. Bann D, Fluharty M, Hardy R, et al. Socioeconomic inequalities in blood pressure: co-ordinated analysis of 147,775 participants from repeated birth cohort and cross-sectional datasets, 1989 to 2016. *BMC Med* 2020;In Press
32. Stang A, Moebus S, Möhlenkamp S, et al. Algorithms for converting random-zero to automated oscillometric blood pressure values, and vice versa. *Am J Epidemiol* 2006;164(1):85-94.
33. Falaschetti E, Chaudhury M, Mindell J, et al. Continued improvement in hypertension management in England: results from the Health Survey for England 2006. *Hypertension* 2009;53(3):480-86.
34. Law M, Wald N, Morris J, et al. Value of low dose combination treatment with blood pressure lowering drugs: analysis of 354 randomised trials. *BMJ* 2003;326(7404):1427.
35. Davies NM, Dickson M, Smith GD, et al. The causal effects of education on health outcomes in the UK Biobank. *Nature Human Behaviour* 2018;2(2):117.
36. Gordon P, Lawton D. Dictionary of British education: Psychology Press 2003.
37. Jackson AS, Janssen I, Sui X, et al. Longitudinal changes in body composition associated with healthy ageing: men, aged 20–96 years. *Br J Nutr* 2012;107(7):1085-91.
38. Koenker R, Bassett Jr G. Regression quantiles. *Econometrica* 1978:33-50.

39. Wadsworth M. The origins and innovatory nature of the 1946 British national birth cohort study. *Longitudinal and Life Course Studies* 2010;1(2):121-36.
40. Hutcheon JA, Chiolero A, Hanley JA. Random measurement error and regression dilution bias. *BMJ* 2010;340:c2289.
41. Zhang J, Wan S, Dong F, et al. Secular Trends of the Impact of Overweight and Obesity on Hypertension in Yi People: Yi Migrant Study, 1996–2015. *Int J Hypertens* 2020;2020:5368357.
42. Tu Y, Summers L, Burley V, et al. Trends in the association between blood pressure and obesity in a Taiwanese population between 1996 and 2006. *J Hum Hypertens* 2011;25(2):88-97.
43. Serumaga B, Ross-Degnan D, Avery AJ, et al. Effect of pay for performance on the management and outcomes of hypertension in the United Kingdom: interrupted time series study. *BMJ* 2011;342:d108.
44. Chang KC, Vamos EP, Palladino R, et al. Impact of the NHS Health Check on inequalities in cardiovascular disease risk: a difference-in-differences matching analysis. *J Epidemiol Community Health* 2019;73(1):11-18.
45. Scholes S, Ng Fat L, Mindell J. Trends in cardiovascular disease risk factors by body mass index category among adults in England 2003-18: analysis of repeated cross-sectional national health surveys. *MedRxiv* 2020
46. He F, Brinsden H, MacGregor G. Salt reduction in the United Kingdom: a successful experiment in public health. *J Hum Hypertens* 2014;28(6):345.