

1 Are temperature suitability and socioeconomic factors reliable predictors  
2 of dengue transmission in Brazil?

3

4 Lorena M. Simon<sup>1†</sup>, Thiago F. Rangel<sup>2</sup>

5

6 <sup>1</sup>Programa da Pós-Graduação em Ecologia e Evolução, Universidade Federal de Goiás,  
7 Goiânia, Goiás 74.690-900, Brazil

8 <sup>2</sup>Departamento de Ecologia, Instituto de Ciências Biológicas, Universidade Federal de  
9 Goiás, CP 131, Goiânia, Goiás 74001, Brazil

10

11 <sup>†</sup>Corresponding author: [loressimon@gmail.com](mailto:loressimon@gmail.com)

## 12 **ABSTRACT:**

### 13 **Background**

14           Dengue disease is an ongoing problem, especially in tropical countries. Like many  
15 other vector-borne diseases, the spread of dengue is driven by a myriad of climate and  
16 socioeconomic factors. Over recent years, mechanistic approaches have predicted areas  
17 of dengue risk according to the temperature effect on mosquitos' lifespan and  
18 incubation period shaping their persistence and competence in transmission. Within  
19 developing countries such as Brazil, heterogeneities on socioeconomic factors are  
20 expected to create variable conditions for dengue transmission by its main vectors.  
21 However, both the relative role of socioeconomic aspects and its association with the  
22 temperature effect in determining the effective dengue prevalence are poorly  
23 understood.

### 24 **Methodology/Principal findings**

25           Here we gathered essential socioeconomic factors comprising demography,  
26 infrastructure, and urbanization over 5570 municipalities across Brazil and evaluated  
27 their relative effect on dengue prevalence jointly with a previously predicted  
28 temperature suitability for transmission. Using a simultaneous autoregressive approach  
29 (SAR), we showed that the variability in the prevalence of dengue cases across Brazil is  
30 highly explained by the combined effect of climate and socio-economic factors.  
31 Moreover, the temperature effect on transmission potential might be a better proxy at  
32 some dengue epidemy seasons but the socioeconomic factors are tightly linked with the  
33 recent increase of the dengue prevalence over Brazil.

## 34 **Conclusions/Significance**

35 In a large and heterogeneous country such as Brazil recognizing the drivers of  
36 transmission by mosquitoes is a fundamental issue to effectively predict and combat  
37 tropical neglected diseases as dengue. Ultimately, it indicates that not considering  
38 socioeconomic factors in disease transmission predictions might compromise efficient  
39 strategies of surveillance. Our study indicates that sanitation, urbanization, and GDP are  
40 regional indicators that should be considered along with temperature suitability for  
41 dengue transmission, setting a good starting point to effective vector-borne disease  
42 control.

43

## 44 **AUTHOR SUMMARY:**

45 Dengue, a disease transmitted by mosquitoes, is a great problem in countries  
46 where the climate is predominantly hot and wet. Researchers know that temperature  
47 plays an important role in mosquitoes' ability to transmits diseases. Usually,  
48 temperature alone is a good explanation for why dengue occurs in certain regions that  
49 have stable warm temperatures. Here we show that, in addition to the role of  
50 temperature on dengue spread, large urban areas with sanitation infrastructure and  
51 health assistance also prelude dengue cases prevalence. We highlight that dengue  
52 surveillance should consider socioeconomic regional differences. For instance, greater  
53 urban centers might be the focus of the dengue burden, where the presence of medical  
54 assistance and sanitation seems not to avoid the increase in disease cases. Conversely,  
55 less urbanized regions with suitable temperature for dengue transmission might require  
56 distinct actions for the disease combat.

57

## 58           **1. INTRODUCTION**

59           The presence and prevalence of many infectious diseases have clear geographic  
60 structures. These health threats vary from country-to-country and cause the loss of  
61 millions of lives annually (1,2). Identifying patterns and drivers of infectious diseases  
62 spread has become a fundamental concern on disease ecology (3). For instance,  
63 understanding why some regions have a higher charge in diseases and pathogens  
64 richness than others might help to identify hotspots for infections outbreak (2).  
65 However, a multitude of factors determines infectious disease geographical distribution  
66 and potential outbreaks, spanning from socioeconomic (*e.g.* urbanization; population  
67 density) to environmental (*e.g.* temperature; precipitation) and biotic (*e.g.* vectors  
68 competition) aspects (1,4). Acknowledging the variation over space in these drivers of  
69 infectious disease is increasing among ecologists in an attempt to identify regions of  
70 outbreak potential, once the disease dynamic is as tightly linked with exogenous factors  
71 as it is with endogenous mechanisms (5,6).

72           Dengue, a mosquito-borne infectious disease, is a global public health concern.  
73 The incidence of dengue has increased thirty-fold over the last five decades, and it is  
74 estimated that approximately one hundred million new infections occur annually (7). In  
75 the Americas, the disease is present in almost all countries with great prevalence (8),  
76 where rapid urban expansion led to ideal environmental conditions for dengue to spread  
77 (9). Nonetheless, dengue is still considered a neglected tropical disease (10). The  
78 geographic distribution of dengue vectors and the probability of virus transmission to  
79 human hosts are likewise driven by the ecological role of temperature (9,11). Despite its  
80 pervasiveness, the effect of ecological variables like temperature and precipitation  
81 might be outweighed by the influence of socio-economic aspects on dengue

82 transmission (12), although ecological suitability approaches have mainly focused on the  
83 temperature effect on outbreaks potential (13,14).

84 On the one hand, climatic characteristics are important ecological drivers of most  
85 vector-borne infections (2,15), of which biological cycles and infectious stages are  
86 directly affected (16). For instance, the temperature can either reduce the infectious  
87 effectiveness by lowering the vector lifespan or increase infectiousness by shortening  
88 the incubation period (increasing epidemic chance) (5,15). In vector-borne diseases, the  
89 geographic range of pathogens and vectors is outlined by climate features due to its  
90 implication in traits such as reproduction, survival, and extrinsic incubation period,  
91 bounding their fitness (2,17,18). Accordingly, vectors' (mostly arthropods) physiology  
92 and the exposure to pathogens are constrained by temperature, generally fitting in a  
93 thermal optimum (*i.e.*, between the maximum and minimum tolerated) (19). The  
94 resulting efficiency in the vector-borne disease transmission is determined by the  
95 species responses to temperature bounds (6,11).

96 On the other hand, socio-economic factors are likewise critical in shaping the  
97 prevalence of infectious diseases (1,4,12). For instance, an increase in per capita  
98 healthcare expenditure is expected to decrease infectious disease prevalence (4),  
99 whereas the increase in human density relates to the augmentation of cases (20).  
100 Income and demography are frequently considered critical factors driving the spread of  
101 infectious diseases (1,4). A country's income incorporates correlated factors that include  
102 sanitation, education, and health assistance, where the lack of investments is often  
103 associated with the rise of infectious disease prevalence (1,12). The population size,  
104 density, and urbanization are in turn demographic factors, of which increase raises the  
105 potential of transmission contact, also providing ideal microclimate and sites for vectors

106 reproduction and development (16,20). In this sense, some infectious diseases prevail  
107 in countries where the characteristics of both demography and infrastructure create  
108 favoring conditions for transmission outcomes (12).

109         Distinct approaches have been used to address the presence and prevalence of  
110 infectious diseases, such as mechanistic (*i.e.*, process-based) and statistical models  
111 (21,22). The mechanistic models rely on empirical information on disease transmission  
112 to estimate parameters in a bottom-up procedure (22). For instance, Brady *et al.* (23)  
113 used a mechanistic model to estimate the thermal limits of dengue through the  
114 relationship between temperature and *Aedes spp.* fitness. Most of the mechanistic  
115 approaches in mosquito-borne diseases have integrated the temperature effect on  
116 transmission traits to predict global geographical patterns, not considering lower scale  
117 socio-economic variations or considering it merely as additional factors (24). Recently,  
118 a multi-model climate-driven approach has also been proposed to forecast *Aedes*-borne  
119 diseases and support surveillance operations (25). Albeit integrating many transmission-  
120 related factors might turn intractable in a process-based procedure, the absence of key  
121 drivers still brings uncertainty to the estimated transmission potential (24).

122         Although dengue is present in almost all tropical and subtropical countries (7),  
123 Brazil has experienced a higher-than-expected number of infection cases in the last  
124 century (8,10). Since the 80's, the reintroduction of dengue in the country has led to its  
125 rampant geographic expansion (26). Initially the presence of dengue virus was more  
126 intense in large urban centers, but since 90's it has spread to small towns and  
127 countryside. In the 2000s, the dengue vectors (*i.e.*, *Aedes aegypti* and *Aedes albopictus*)  
128 were already present in 72% of Brazilian municipalities, dramatically increasing the  
129 disease cases and overloading the Brazilian health system (27). Although pervasive

130 across Brazil, the prevalence of dengue cases varies widely among the urban centers  
131 making it difficult for dengue season preparedness especially in conjunction with other  
132 infectious disease outbreak (27,28).

133 In this paper we evaluate the relative impact of socioeconomic conditions and  
134 temperature suitability over the spatial pattern of dengue fever prevalence across Brazil.  
135 We used a previously estimated temperature suitability for dengue transmission (23)  
136 and 7 socio-economic variables to study the prevalence of dengue disease in 5570  
137 municipalities across Brazil. We also seek to understand the fit between the estimated  
138 temperature suitability for transmission and the effective prevalence of dengue in the  
139 last years. We predict that in a highly heterogeneous country, such as Brazil,  
140 socioeconomic factors are the greater source of high levels of dengue prevalence. In  
141 Brazil, regions with the highest dengue prevalence are not those with highest estimated  
142 temperature suitability for transmission, although suitability is still a good indicator of  
143 the disease occurrence.

## 144 **2. MATERIALS AND METHODS**

### 145 **(a) Data**

#### 146 *(i) Dengue cases*

147 The number of dengue cases in Brazilian municipalities from 2007 to 2013 were  
148 obtained from DATASUS, a national public health database maintained by the Brazilian  
149 Health System (29). From 2014 to 2016 we obtained, from the same source, the number  
150 of probable cases (as opposed to diagnosed cases), which has a higher sensitivity for  
151 reports during epidemic periods. The dengue cases are notified as probable based on

152 clinical and epidemiological evidence, and are carried out by a local health surveillance  
153 team (30).

154 *(ii) Temperature suitability*

155 Here we used the simulated dengue transmission suitability maps by Brady *et al.*  
156 (23) as a predictor of dengue presence and prevalence in Brazil, from which we extracted  
157 the raster information regarding each municipality. Brady *et al.* (23), estimated the  
158 dengue transmission suitability from the temperature influence on mosquitoes' (*Ae.*  
159 *aegypti* and *Ae. albopictus*) survivorship and extrinsic incubation period (*i.e.*, EIP). The  
160 EIP represents the period between mosquito biting an infected host and being able to  
161 transmit the virus after processing the pathogen into the gut (*i.e.*, become infectious)  
162 (31). Brady's *et al.* (23) mechanistic model considered the dynamic between the EIP and  
163 the adult vector survival - both temperature-dependent - over the basic reproductive  
164 number (*i.e.*,  $R_0$ ) (see (32,33)). The model outcome was then combined with a spatially  
165 explicit temperature data, producing predictive maps of vectors' suitability range on the  
166 persistence and competence of dengue transmission (23).

167 *(iii) Socio-economic drivers*

168 For each Brazilian municipality, we likewise gathered important socio-economic  
169 predictors to the distribution and prevalence of mosquito-borne diseases (see Table A  
170 in S1 Appendix), which were: human population density, urbanization, population size,  
171 amount of health facilities, gross domestic product (henceforth GDP), education and  
172 sanitation. The referred socio-economic variables and the political-administrative  
173 division map of Brazilian municipalities were obtained from IBGE (34,35). The Brazilian



174 political-administrative extension comprises 5570 municipalities, which were all  
175 included.

176 Epidemiological studies suggest that regions with high population density and  
177 great urbanization favor the increase of dengue cases by facilitating vectors' mobility  
178 and reproduction (20,36). Here we estimated the population density as the ratio among  
179 population size and the area of each municipality. We accounted for the population size  
180 as the total number of people within each municipality, following the IBGE classification.  
181 To access the proportion of urbanization within municipalities, we estimated the ratio  
182 between the urbanized area (maps based on satellite images (34)) and the whole  
183 political-administrative extent from each municipality. Also, to account for the effect of  
184 medical diagnosis, notification and local investments, we used the number of people  
185 assisted by educational and health assistance in each municipality (16,27). Finally, to  
186 represent economic development, we also considered GDP (log scale) and the presence  
187 of the basic sanitation system (*i.e.*, sewage treatment and/or rainfall water  
188 management) (see Table A in S1 Appendix).

### 189 **(b) Analyses**

190 We employed linear correlations among the predictor variables to assess their  
191 collinearity. In a stepwise procedure, we evaluated the non-independence between the  
192 predictors by measuring the Variance Inflation Factor (VIF) among them and set apart  
193 the most redundant variables. We started with a full model and iterated the procedure  
194 until all the predictors had a VIF lower than 10 (37). According to this procedure the  
195 variables population size and education are the most collinear and were therefore  
196 removed from analyses. Although important to disease transmission in general (Table A

197 in S1 Appendix), the population size has a confounding relation with GDP in Brazil as a  
198 consequence of internal migration patterns to economically developed areas (38).

199 Because our analysis is spatially explicit, we accounted for the spatial  
200 autocorrelation that could potentially inflate Type-I errors of statistical inferences (39).  
201 We used a simultaneous autoregressive model (SAR), which comprises linear  
202 regressions with the addition of an autoregressive term specifying the strength of  
203 dependence between each pair of locations. We followed the Kissling & Carl (40)  
204 recommendation of reliability and better performance of SAR<sub>error</sub> model, and also used  
205 the row standardized coding for the spatial weight matrix, all using the R packages spdep  
206 (41) and spatialreg (42). Finally, we examined Moran's I correlogram from models'  
207 residuals to ensure the effective control of the spatial autocorrelation.

208 To test for the dissimilarity between putative drives of dengue prevalence, once  
209 the period of 2015-2016 had higher disease prevalence than previous years (8), we  
210 implemented two separate SAR<sub>error</sub> models using the log of dengue cases for the periods  
211 of 2007-2014 and 2015-2016.

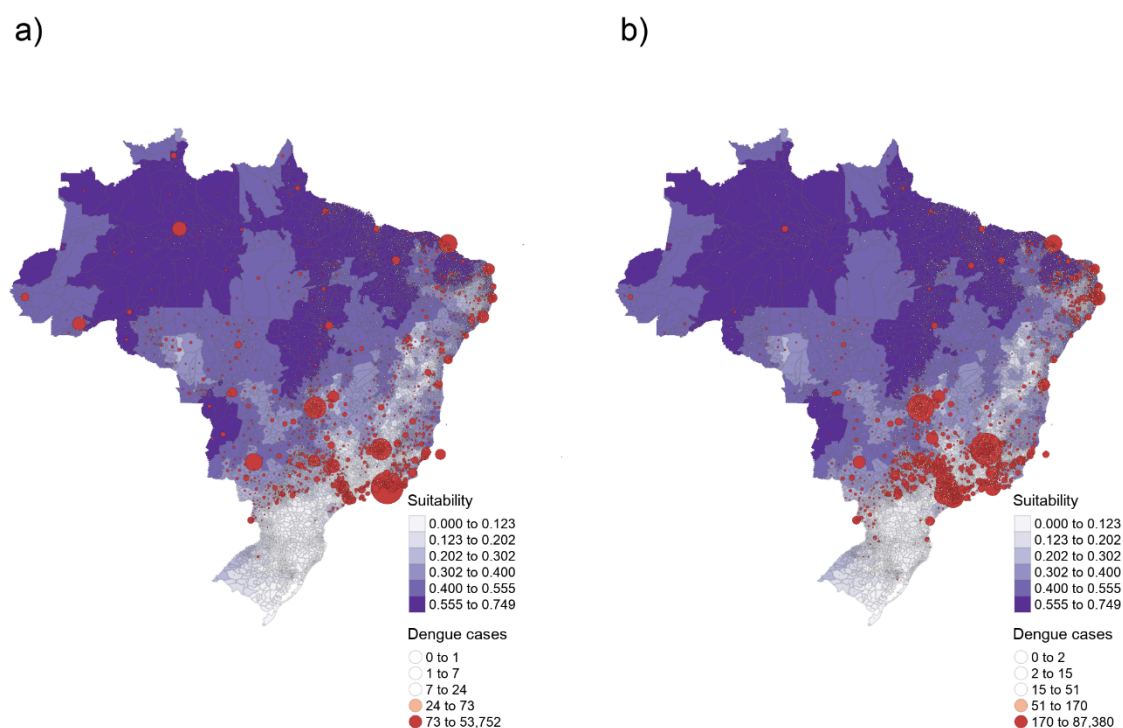
212 Because our SAR<sub>error</sub> models that are estimated by maximum likelihood the  
213 calculation of coefficient of determination is different from standard OLS regression  
214 (43). We therefore estimated coefficients of determination ( $R^2$ ) through the following  
215 formula:

216 
$$R^2 = 1 - \exp\left(\frac{-2}{n} (L_{full} - L_{null})\right)$$

217 where,  $n$  = sample size,  $L_{full}$  = likelihood of the fitted model,  $L_{null}$  = likelihood of the null  
218 model- the model containing no autoregressive term -. All analyses and maps were  
219 performed using R 3.5.0 (44) (<https://www.r-project.org>).

### 220 3. RESULTS

221 Dengue cases are unevenly distributed across Brazil, both in occurrence and  
222 prevalence (*i.e.*, number of cases) (Fig 1). Over the last years, most dengue cases showed  
223 to be concentrated into the Southeast and Midwest regions of Brazil, but were also less  
224 frequently present in the North and Northeast. From 2007-2014 (Fig 1a) there were  
225 fewer recorded dengue cases when compared with a more recent epidemic period  
226 (2015-2016; Fig 1b), albeit reaching the Northern region with a higher prevalence. From  
227 2015 to 2016, the dengue prevalence was greater in the Southeast, Midwest, and  
228 Northeast regions of Brazil, where the total number of cases almost doubled  
229 proportionally to the previous seven years on which dengue was predominant into the  
230 Southeast.



231

232 Fig 1. Brazilian dengue cases distribution of (a) 2007 to 2014 and (b) 2015 to 2016. The size of the red

233 circles corresponds to the magnitude of dengue prevalence (*i.e.*, the mean number of cases). The intensity  
234 of purple indicates the mean temperature suitability for the dengue transmission by *Aedes* spp. vectors  
235 (23).

236 The graphical comparison between the distribution of real dengue cases (Fig. 1,  
237 red circles) and the estimated temperature suitability for potential dengue transmission  
238 (Fig. 1, purple shades) showed a lack of correspondence in both periods. Although the  
239 Brady's *et al.* model predicts high temperature suitability for dengue transmission in the  
240 North and Northeast regions of Brazil, fewer dengue cases truly occurred within this  
241 extensive area. Conversely, most dengue cases were recorded into the Southeast and  
242 Midwest regions, where the model estimated lower temperature suitability. Notably,  
243 the greatest proportion of dengue cases are concentrated in areas where the model did  
244 not predict temperature suitability for dengue transmission. However, the temperature  
245 suitability model accurately predicts the decreased potential for dengue outbreak in  
246 southern Brazil, where the number of autochthonous dengue cases was lower in the  
247 whole period of almost ten years.

248 The autoregressive model revealed that the relative importance of the socio-  
249 economic factors and estimated temperature suitability for dengue transmission in  
250 Brazil (Table 1). From 2007 to 2014, the urbanization (as well as its association with the  
251 temperature suitability), health facilities and GDP were the socioeconomic factors that  
252 best explained the number of dengue cases across Brazil. In contrast, GDP and sanitation  
253 were the solely socioeconomic factors that accounted for the disease distribution and  
254 prevalence in 2015-2016. However, in both 2007-2014 ( $z = 67.423$ ) and 2015-2016 ( $z =$   
255  $58.691$ ), GDP was the predictor that best explained number recorded dengue cases  
256 across the country. Albeit in less magnitude, temperature suitability for dengue

257 transmission also showed higher explanatory power for the distribution of dengue cases  
 258 in 2007-2014 ( $z = 14.825$ ) than in 2015-2016 ( $z = 7.145$ ).  
 259

**Table 1. SAR<sub>error</sub> results for both periods, previous (2007 to 2014) and recent (2015 to 2016).**

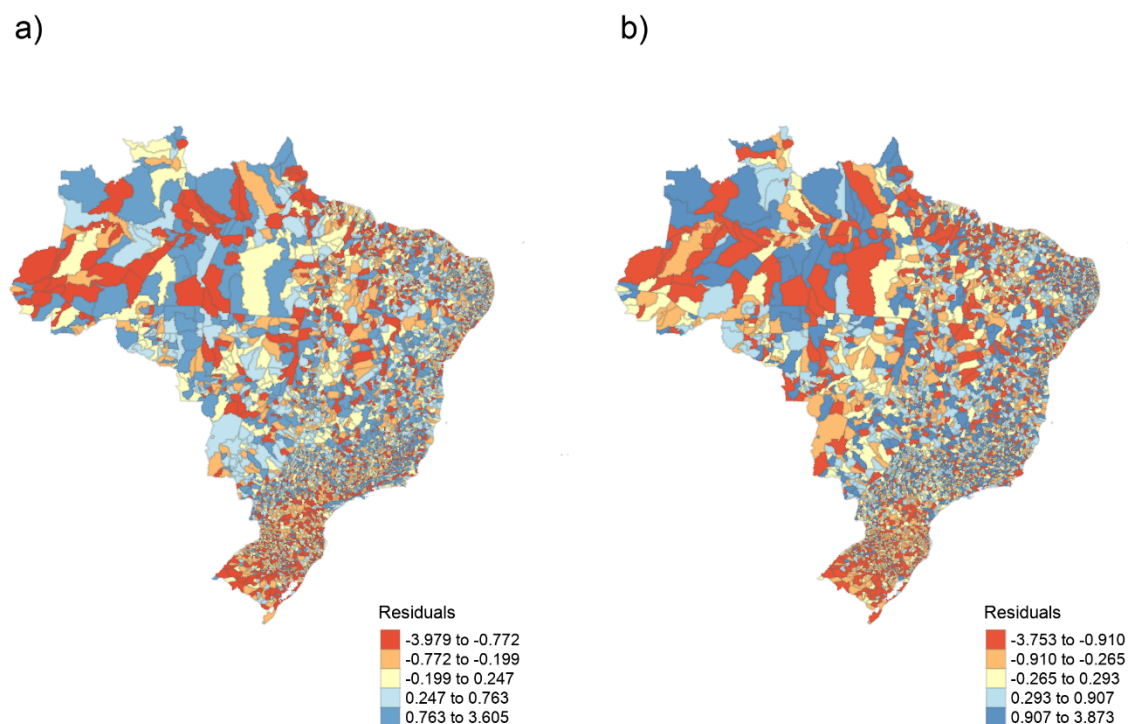
Dependent Variable: Previous dengue cases (ln)			Dependent Variable: Recent Epidemic dengue cases (ln)		
Independent Variables	Parameter Estimate (Standard Error)	z Value	Independent Variables	Parameter Estimate (Standard Error)	z Value
Temperature Suitability	3.858 (0.26)***	14.82	Temperature Suitability	2.145 (0.30)***	7.14
Urbanization	-0.108 (0.27)***	-2.34	Urbanization	0.061 (0.31)	0.19
Population Density	1.016e-04 (4.97e-05)*	2.04	Population Density	7.875e-05 (5.81e-05)*	1.35
Health Facilities	1.483e-04 (3.25e-05)***	4.56	Health Facilities	7.824e-05 (3.81e-05)*	2.05
GDP (ln)	0.796 (0.01)***	67.42	GDP (ln)	0.811 (0.01)***	58.69
Sanitation	0.047 (0.03)*	1.56	Sanitation	0.142 (0.03)***	4.05
Temperature Suitability vs. Density	-1.115e-04 (1.829e-04)	-0.61	Temperature Suitability vs. Density	-1.766e-04 (2.14e-04)	-0.83
Temperature Suitability vs. Urbanization	4.448 (1.12)***	3.98	Temperature Suitability vs. Urbanization	1.723 (1.30)*	1.32
R <sup>2</sup>	0.53		R <sup>2</sup>	0.49	
AIC (lm)	19917		AIC (lm)	21264	
AIC (SAR <sub>error</sub> )	15744		AIC (SAR <sub>error</sub> )	17475	
Moran's I (p-value)	(0.99)		Moran's I (p-value)	(0.99)	

\* $p \leq 0.10$ .  
 \*\*\* $p \leq 0.01$ .  
 (ln) Natural log.

260  
 261 Human population density was not a significant explanatory factor for the  
 262 number of recorded dengue cases in both periods, neither was its interaction with  
 263 estimated temperature suitability for dengue transmission. However, urbanization, a  
 264 proxy for the expansion of human-modified areas, was found to be an important

265 predictor of the dengue cases from 2007 to 2014 (Table 1). Both urbanization itself and  
266 its interaction with the temperature suitability for dengue transmission were significant  
267 in those previous years, but less relevant in the more recent period of 2015-2016. The  
268 coefficients of determination ( $R^2$ ) of the  $SAR_{error}$  models varied between periods,  
269 suggesting that the same socio-economic variables and the temperature suitability for  
270 dengue transmission have higher explanatory power during years of lower transmission  
271 ( $R^2 = 0.53$ ) than in periods of an increased outbreak ( $R^2 = 0.49$ ). The SAR model had lower  
272 AICs than its Ordinary Least Squares (OLS) counterpart (Table 1).

273         Spatial autocorrelation was successfully controlled by the SAR model (Fig A in S2  
274 Appendix). The residuals of the models revealed a narrow variation on the range of  
275 values and there were no marked spatial patterns of residuals across Brazil (Fig 2). In the  
276 southern region the residuals are very small in many municipalities, indicating that  
277 model predictions were accurate in these areas. In contrast, some municipalities in the  
278 Amazon region had negative residuals (overestimated number of dengue cases),  
279 whereas some municipalities in central and southeast Brazil had positive residuals  
280 (underestimated number of dengue cases) (Fig 2).



281

282 **Fig 2: SAR<sub>error</sub> models' resulting residuals.** (a) 2007 to 2014 and (b) 2015 to 2016, spatially distributed by  
283 municipalities.

#### 284 **4. DISCUSSION**

285 The higher prevalence of dengue over Brazil compared to other countries has  
286 intrigued researchers for decades, revealing that singular factors might regulate the  
287 transmission of this infectious disease within particular countries (27). This constant  
288 reemergence and maintenance of a high number of dengue cases in Brazil remain  
289 unclear, which is justified due to the complex nature of the biological features of virus  
290 (*e.g.*, serotypes, virulence), host (*e.g.*, immune system) and vectors (*e.g.*, ambient  
291 suitability, reproduction rates) (45). Therefore, the magnitude of the dengue incidence  
292 fluctuates according to a myriad of environmental factors. Our results showed that,  
293 although temperature suitability for transmission is a good indicator of dengue

294 occurrence, the socio-economic characteristics are the fundamental determinants of  
295 the spatial patterns in dengue prevalence in Brazil.

296         Similar to other tropical nations, Brazil is a heterogeneous country that has  
297 undergone substantial urban growth in recent decades. This rapid urban expansion  
298 along with favorable climatic conditions creates an ideal scenario for the establishment  
299 and spread of critical infectious diseases, especially those carried by mosquitoes (22).  
300 However, dengue occurrence and number of cases differ substantially among regions  
301 within Brazil. Thus, predicting the potential transmission of mosquito-borne infectious  
302 disease requires incorporating environmental and socio-economic heterogeneities  
303 among regions, especially in countries where an endemic scenario is well established  
304 (27). Although the temperature is a physical factor known to affect the physiology of  
305 mosquitoes and its capacity as disease vectors (18), here we demonstrated that the  
306 predicted temperature suitability for dengue transmission does not account for the  
307 largest proportion of variation in the number of dengue cases across Brazil, where  
308 socioeconomic factors showed fundamental in promoting or preventing dengue  
309 transmission.

310         Because temperature drives the suitability for dengue transmission (25) global  
311 climate change may substantially alter the spatial pattern in the distribution and  
312 prevalence of dengue (11,46). In countries where the autochthonous transmission of  
313 dengue is established, the rising temperatures may intensify transmission by favoring  
314 vectors' survival, reproduction, and biting rates (6). Estimates of dengue transmission  
315 suitability under temperature trends have been made as an attempt to anticipate  
316 epidemics spread and to plan mitigation strategies (22,23,47). Frequently, such  
317 estimates point to a potential increase of the dengue burden under current and future



318 temperature scenarios. Under lower spatial and temporal scales, the relationship  
319 between temperature and multiple other drivers, such as urbanization, GDP, and  
320 sanitation, should be more appropriate to describe patterns of disease transmission  
321 (16,18). For instance, we showed that Brady's *et al.* model point to a high dengue  
322 transmission potential in the north of Brazil (*e.g.* Amazon region), although few cases  
323 were reported there; this reveals that, under the temperature perspective, their model  
324 may correctly predict the potential of dengue transmission in this area, but the effective  
325 transmission of dengue depends on socio-economic factors, such as demography.  
326 Notwithstanding, the thermal optima for dengue transmission are limited considering  
327 the unimodal effect of temperature (6,11). Increasing the temperature over the  
328 tolerance of vectors and pathogens might instead decrease dengue transmission in  
329 response to microclimates modulation on urban sites (28), justifying an overestimated  
330 number of dengue cases in some cities.

331         After controlling for the role of temperature suitability for transmission, our  
332 findings highlight that the socio-economic conditions contribute substantially to dengue  
333 prevalence. Jointly, the GDP and urbanization surpassed the importance of temperature  
334 suitability during previous years, whereas the GDP along with sanitation were  
335 determinants of the recent dengue increase. Although temperature constrains the  
336 fitness of dengue vectors, environmental conditions created by urban settings still  
337 modulate their persistence and competence (48). Conversely, larger urban centers are  
338 usually equipped with more health facilities, increasing the capacity for dengue  
339 diagnosis and reports. Higher economic income along with expected development  
340 might also reduce infectious diseases by increasing the sanitation system and vector  
341 combat (12,49). However, our results pointed out a positive relationship between the

342 sanitation system and GDP with the prevalence of dengue, indicating that their presence  
343 by itself may not attest to the benefits of economic wealth in reducing the dengue  
344 disease cases in Brazil.

345         The demography in urban environments is thought to be an important driver of  
346 dengue prevalence (50). For instance, a temporal analysis of the dengue outbreak in  
347 Singapore found that the population demography is the main driver for the dengue  
348 increase in the last years (51). This encounter is usually accurate given the expected  
349 mixed contact between hosts and vectors, where the pure increase in individuals density  
350 is expected to increase the contact rates between hosts and vectors (32). However, after  
351 controlling for other covariates, our model did not find a substantial effect of  
352 demography on the prevalence of dengue cases across Brazil. Although demography  
353 might be a good proxy for the number of susceptible individuals, in dengue-endemic  
354 countries such as Brazil the serotypes immunization is likely to reduce this proportion  
355 (52). Still, the population density may have great importance at the local scale (*e.g.*,  
356 among neighborhoods), once it increases the probability of vector contact with hosts  
357 when the virus is installed (53). The greater relation of municipalities' GDP with dengue  
358 prevalence could also be an indication of the interchange between higher population,  
359 immunization, and different serotypes circulating, once Brazilian cities with greater  
360 income grown faster by historically being attractive for migration (54).

361         There is no doubt that the burden of dengue is heavier in some regions than  
362 others. In Brazil, where dengue cases greatly vary across space and time, we highlight  
363 that the combined effect of climate and socio-economic factors drive the dengue  
364 occurrence and prevalence. Still, due to the lack of reliable reports on dengue  
365 prevalence, most predictive models overemphasize the role of temperature on dengue

366 transmission in large scales (22). By accounting for the effect of socio-economic drivers  
367 in an extremely heterogeneous country, we showed that dengue prevalence is  
368 explained not only by the temperature suitability for transmission but also by social and  
369 economic factors. Highly urbanized centers with great income were found to be  
370 epicenters of dengue transmission in Brazil, aligned with other infectious diseases (55).  
371 Consequently, projections of dengue risk areas over actual or future climatic conditions  
372 should include socioeconomic covariates to make predictions reliable for decision  
373 making regarding a vector-borne tropical neglected disease such as dengue, especially  
374 when considering that dengue season might come when another infectious disease  
375 epidemic is already overloading the health system (*e.g.* SARS-CoV-2). Here we  
376 emphasize the need of considering social, economic, and cultural differences between  
377 Brazilian regions for effective decision making.

378

### 379 **Data accessibility**

380 This article has no additional data.

381

### 382 **Competing interests**

383 The authors declare that the research was conducted in the absence of any commercial  
384 or financial relationships that could be construed as a potential conflict of interest.

385

### 386 **Acknowledgments**

387 This study was financed in part by the Coordenação de Aperfeiçoamento de Pessoal de  
388 Nível Superior - Brasil (CAPES) - Finance Code 001.

## 389 References

- 390 1. Bonds MH, Dobson AP, Keenan DC. Disease Ecology, Biodiversity, and the  
391 Latitudinal Gradient in Income. Hochberg ME, editor. *PLoS Biol*. 2012 Dec  
392 27;10(12):e1001456.
- 393 2. Guernier V, Hochberg ME, Guégan J-F. Ecology Drives the Worldwide  
394 Distribution of Human Diseases. Paul Harvey, editor. *PLoS Biol*. 2004 Jun 15;2(6):e141.
- 395 3. Stensgaard A-S, Dunn RR, Vennervald BJ, Rahbek C. The neglected geography  
396 of human pathogens and diseases. *Nat Ecol Evol*. 2017 Jun 22;1(7):0190.
- 397 4. Dunn RR, Davies TJ, Harris NC, Gavin MC. Global drivers of human pathogen  
398 richness and prevalence. *Proc R Soc B Biol Sci*. 2010 Sep 7;277(1694):2587–95.
- 399 5. Bødker R, Akida J, Shayo D, Kisinza W, Msangeni HA, Pedersen EM, et al.  
400 Relationship between altitude and intensity of malaria transmission in the Usambara  
401 Mountains, Tanzania. *J Med Entomol*. 2003 Sep;40(5):706–17.
- 402 6. Siraj AS, Oidtman RJ, Huber JH, Kraemer MUG, Brady OJ, Johansson MA, et al.  
403 Temperature modulates dengue virus epidemic growth rates through its effects on  
404 reproduction numbers and generation intervals. Althouse B, editor. *PLoS Negl Trop Dis*.  
405 2017 Jul 19;11(7):e0005797.
- 406 7. WHO | Epidemiology [Internet]. WHO. World Health Organization; [cited 2020  
407 May 14]. Available from: <http://www.who.int/denguecontrol/epidemiology/en/>
- 408 8. Dengue - PAHO/WHO | Pan American Health Organization [Internet]. [cited  
409 2020 May 14]. Available from: <https://www.paho.org/en/topics/dengue>
- 410 9. Phillips ML. Dengue reborn: widespread resurgence of a resilient vector. *Environ*  
411 *Health Perspect*. 2008 Sep;116(9):A382-388.
- 412 10. Bhatt S, Gething PW, Brady OJ, Messina JP, Farlow AW, Moyes CL, et al. The  
413 global distribution and burden of dengue. *Nature*. 2013 Apr 7;496(7446):504–7.
- 414 11. Brady OJ, Johansson MA, Guerra CA, Bhatt S, Golding N, Pigott DM, et al.  
415 Modelling adult *Aedes aegypti* and *Aedes albopictus* survival at different temperatures in  
416 laboratory and field settings. *Parasit Vectors*. 2013;6(1):351.
- 417 12. Wood CL, McInturff A, Young HS, Kim D, Lafferty KD. Human infectious  
418 disease burdens decrease with urbanization but not with biodiversity. *Philos Trans R Soc*  
419 *B Biol Sci*. 2017 Jun 5;372(1722):20160122.
- 420 13. Reiter P, Lathrop S, Bunning M, Biggerstaff B, Singer D, Tiwari T, et al. Texas  
421 Lifestyle Limits Transmission of Dengue Virus. *Emerg Infect Dis*. 2003 Jan;9(1):86–9.
- 422 14. Akter R, Hu W, Naish S, Banu S, Tong S. Joint effects of climate variability and  
423 socioecological factors on dengue transmission: epidemiological evidence. *Trop Med Int*  
424 *Health*. 2017 Jun;22(6):656–69.
- 425 15. Lafferty KD. The ecology of climate change and infectious diseases. *Ecology*.  
426 2009 Apr;90(4):888–900.
- 427 16. Kuno G. Review of the Factors Modulating Dengue Transmission. *Epidemiol*  
428 *Rev*. 1995;17(2):321–35.
- 429 17. Kyle JL, Harris E. Global spread and persistence of dengue. *Annu Rev Microbiol*.  
430 2008;62:71–92.
- 431 18. Chandrasegaran K, Lahondère C, Escobar LE, Vinauger C. Linking Mosquito  
432 Ecology, Traits, Behavior, and Disease Transmission. *Trends Parasitol*. 2020 Apr  
433 1;36(4):393–403.
- 434 19. Dell AI, Pawar S, Savage VM. Systematic variation in the temperature  
435 dependence of physiological and ecological traits. *Proc Natl Acad Sci*. 2011 Jun  
436 28;108(26):10591–6.
- 437 20. Anderson RM, May RM. Regulation and Stability of Host-Parasite Population

- 438 Interactions: I. Regulatory Processes. *J Anim Ecol.* 1978 Feb;47(1):219.
- 439 21. Parham PE, Waddock J, Christophides GK, Hemming D, Augusto F, Evans KJ, et  
440 al. Climate, environmental and socio-economic change: weighing up the balance in  
441 vector-borne disease transmission. *Philos Trans R Soc B Biol Sci.* 2015 Feb  
442 16;370(1665):20130551–20130551.
- 443 22. Messina JP, Brady OJ, Pigott DM, Golding N, Kraemer MUG, Scott TW, et al.  
444 The many projected futures of dengue. *Nat Rev Microbiol.* 2015 Apr;13(4):230–9.
- 445 23. Brady OJ, Golding N, Pigott DM, Kraemer MUG, Messina JP, Reiner Jr RC, et  
446 al. Global temperature constraints on *Aedes aegypti* and *Ae. albopictus* persistence and  
447 competence for dengue virus transmission. *Parasit Vectors.* 2014;7(1):338.
- 448 24. Carlson CJ, Dougherty E, Boots M, Getz W, Ryan SJ. Consensus and conflict  
449 among ecological forecasts of Zika virus outbreaks in the United States. *Sci Rep.* 2018  
450 Dec;8(1):4921.
- 451 25. Muñoz ÁG, Chourio X, Rivière-Cinamond A, Diuk-Wasser MA, Kache PA,  
452 Mordecai EA, et al. AeDES: a next-generation monitoring and forecasting system for  
453 environmental suitability of Aedes-borne disease transmission. *Sci Rep.* 2020  
454 Dec;10(1):12640.
- 455 26. Barcellos C, Lowe R. Expansion of the dengue transmission area in Brazil: the  
456 role of climate and cities. *Trop Med Int Health.* 2014 Feb;19(2):159–68.
- 457 27. Teixeira MG, Costa M da CN, Barreto F, Barreto ML. Dengue: twenty-five years  
458 since reemergence in Brazil. *Cad Saúde Pública.* 2009;25(suppl 1):S7–18.
- 459 28. Araujo RV, Albertini MR, Costa-da-Silva AL, Suesdek L, Franceschi NCS,  
460 Bastos NM, et al. São Paulo urban heat islands have a higher incidence of dengue than  
461 other urban areas. *Braz J Infect Dis Off Publ Braz Soc Infect Dis.* 2015 Apr;19(2):146–  
462 55.
- 463 29. DATASUS [Internet]. [cited 2020 May 14]. Available from:  
464 <http://www2.datasus.gov.br/DATASUS/index.php?area=02>
- 465 30. Siqueira JB, Martelli CMT, Coelho GE, Simplicio AC da R, Hatch DL. Dengue  
466 and dengue hemorrhagic fever, Brazil, 1981-2002. *Emerg Infect Dis.* 2005 Jan;11(1):48–  
467 53.
- 468 31. Chan M, Johansson MA. The Incubation Periods of Dengue Viruses. Vasilakis N,  
469 editor. *PLoS ONE.* 2012 Nov 30;7(11):e50972.
- 470 32. Anderson RM, May RM. *Infectious Diseases of Humans: Dynamics and Control.*  
471 OUP Oxford; 1992. 772 p.
- 472 33. Gething PW, Van Boeckel TP, Smith DL, Guerra CA, Patil AP, Snow RW, et al.  
473 Modelling the global constraints of temperature on transmission of *Plasmodium*  
474 *falciparum* and *P. vivax*. *Parasit Vectors.* 2011 May 26;4:92.
- 475 34. IBGE | Portal do IBGE | IBGE [Internet]. [cited 2020 Jul 20]. Available from:  
476 <https://www.ibge.gov.br/pt/inicio.html>
- 477 35. Sistema IBGE de Recuperação Automática - SIDRA [Internet]. [cited 2020 Jul  
478 20]. Available from: <https://sidra.ibge.gov.br/home/ipca/brasil>
- 479 36. Guerra CA, Reiner RC, Perkins TA, Lindsay SW, Midega JT, Brady OJ, et al. A  
480 global assembly of adult female mosquito mark-release-recapture data to inform the  
481 control of mosquito-borne pathogens. *Parasit Vectors.* 2014 Jun 19;7:276.
- 482 37. O'Brien RM. A Caution Regarding Rules of Thumb for Variance Inflation Factors.  
483 *Qual Quant.* 2007 Sep 11;41(5):673–90.
- 484 38. Yap L. Internal Migration and Economic Development in Brazil. *Q J Econ.*  
485 1976;90(1):119–37.
- 486 39. Legendre P, Legendre LFJ. *Numerical Ecology.* Elsevier; 2012. 1007 p.
- 487 40. Kissling WD, Carl G. Spatial autocorrelation and the selection of simultaneous

- 488 autoregressive models. *Glob Ecol Biogeogr.* 2007 Jun 16;0(0):070618060123007-???
- 489 41. Bivand R, Altman M, Anselin L, Assunção R, Berke O, Bernat A, et al. *spdep:*  
490 *Spatial Dependence: Weighting Schemes, Statistics* [Internet]. 2019 [cited 2020 May 14].  
491 Available from: <https://CRAN.R-project.org/package=spdep>
- 492 42. Bivand R, Piras G, Anselin L, Bernat A, Blankmeyer E, Chun Y, et al. *spatialreg:*  
493 *Spatial Regression Analysis* [Internet]. 2019 [cited 2020 May 28]. Available from:  
494 <https://CRAN.R-project.org/package=spatialreg>
- 495 43. Nagelkerke NJD. A Note on a General Definition of the Coefficient of  
496 Determination. *Biometrika.* 1991;78(3):691–2.
- 497 44. R: The R Project for Statistical Computing [Internet]. [cited 2020 Jul 21].  
498 Available from: <https://www.r-project.org/>
- 499 45. Gubler DJ. The Economic Burden of Dengue. *Am J Trop Med Hyg.* 2012 May  
500 1;86(5):743–4.
- 501 46. Kraemer MUG, Sinka ME, Duda KA, Mylne AQN, Shearer FM, Barker CM, et  
502 al. The global distribution of the arbovirus vectors *Aedes aegypti* and *Ae. albopictus*.  
503 *eLife.* 2015 Jun 30;4:e08347.
- 504 47. Mordecai EA, Ryan SJ, Caldwell JM, Shah MM, LaBeaud AD. Climate change  
505 could shift disease burden from malaria to arboviruses in Africa. *Lancet Planet Health.*  
506 2020 Sep;4(9):e416–23.
- 507 48. Johansson MA, Dominici F, Glass GE. Local and global effects of climate on  
508 dengue transmission in Puerto Rico. *PLoS Negl Trop Dis.* 2009;3(2):e382.
- 509 49. Åström C, Rocklöv J, Hales S, Béguin A, Louis V, Sauerborn R. Potential  
510 Distribution of Dengue Fever Under Scenarios of Climate Change and Economic  
511 Development. *EcoHealth.* 2012 Dec;9(4):448–54.
- 512 50. Schmidt W-P, Suzuki M, Thiem VD, White RG, Tsuzuki A, Yoshida L-M, et al.  
513 Population density, water supply, and the risk of dengue fever in Vietnam: cohort study  
514 and spatial analysis. *PLoS Med.* 2011 Aug;8(8):e1001082.
- 515 51. Struchiner CJ, Rocklöv J, Wilder-Smith A, Massad E. Increasing Dengue  
516 Incidence in Singapore over the Past 40 Years: Population Growth, Climate and Mobility.  
517 *PloS One.* 2015;10(8):e0136286.
- 518 52. Wearing HJ, Rohani P. Ecological and immunological determinants of dengue  
519 epidemics. *Proc Natl Acad Sci.* 2006 Aug 1;103(31):11802–7.
- 520 53. Padmanabha H, Correa F, Rubio C, Baeza A, Osorio S, Mendez J, et al. Human  
521 Social Behavior and Demography Drive Patterns of Fine-Scale Dengue Transmission in  
522 Endemic Areas of Colombia. Paul R, editor. *PLOS ONE.* 2015 Dec 14;10(12):e0144451.
- 523 54. Salles TS, da Encarnação Sá-Guimarães T, de Alvarenga ESL, Guimarães-Ribeiro  
524 V, de Meneses MDF, de Castro-Salles PF, et al. History, epidemiology and diagnostics  
525 of dengue in the American and Brazilian contexts: a review. *Parasit Vectors.* 2018  
526 Dec;11(1):264.
- 527 55. de Souza WM, Buss LF, Candido D da S, Carrera J-P, Li S, Zarebski AE, et al.  
528 Epidemiological and clinical characteristics of the COVID-19 epidemic in Brazil. *Nat*  
529 *Hum Behav.* 2020 Jul 31;
- 530

## 531 **Supporting information**

532

533 **S1 Appendix. Table of description and predictions to each socioeconomic variable used**  
534 **as an independent variable.**

535

536 **S2 Appendix. Figure showing the Moran's I correlogram for SAR<sub>error</sub> model's residuals**