

1 **Randomized controlled trial of convalescent plasma therapy against standard therapy in**
2 **patients with severe COVID-19 disease**
3
4

5 Manaf AlQahtani MD^{1,2*}, Abdulkarim Abdulrahman MD^{1,3}, Abdulrahman Almadani MD², Salman
6 Yousif Alali MD^{1,2}, Alaa Mahmood Al Zamrooni MD⁴, Amal Hamza Hejab MD¹, Ronán M
7 Conroy PhD⁵, Pearl Wasif BSc⁶, Stephen L Atkin PhD⁶, Sameer Otoom PhD⁶, Manal Abduljalil
8 MD²
9

10
11 ¹National Task Force for Combating the Corona Virus (COVID-19), Bahrain

12 ² Bahrain Defence Force Hospital, Bahrain.

13 ³Sheikh Mohammed bin Khalifa Cardiac Centre, Bahrain.

14 ⁴Salmaniya Medical Complex, Manama, Bahrain

15

16 ⁵Royal College of Surgeons in Ireland, Dublin, Ireland

17 ⁶Royal College of Surgeons in Ireland-Bahrain.

18 *Corresponding author: Manaf AlQahtani, Bahrain Defence Force Hospital, Bahrain.

19 E-mail: mqahtani@rcsi-mub.com Tel +973 39766000

20 Conflict of interest Disclosures. The authors have declared that no conflict of interest exists.

21 Funding/Support: This work was supported by the Ministry of Health Bahrain and the College of
22 Surgeons in Ireland-Bahrain

23

24 Word count: 2802

25

26 Clinical trials registration. NCT04356534

27

28

29

30 Abstract

31 **Background.** Convalescent plasma (CP) therapy in COVID-19 disease has been suggested to
32 improve clinical outcome in severe disease. This pilot study was designed to inform the design of a
33 definitive phase 3 clinical trial.

34 **Methods.** This was a prospective, interventional and randomized open label pilot trial involving 40
35 patients with COVID-19 who were requiring oxygen therapy and who had radiological evidence of
36 pneumonia. Twenty COVID-19 patients received two 200ml transfusions of convalescent patient
37 CP over 24 hours were compared with 20 patients who received routine care alone. The primary
38 outcome was the requirement for ventilation. The secondary outcomes were white blood cell count,
39 lactate dehydrogenase (LDH), C-reactive protein (CRP), Troponin, Ferritin, D-Dimer,
40 procalcitonin, mortality rate at 28 days.

41 **Results.** The CP group were a higher risk group with higher ferritin levels ($p < 0.05$) though
42 respiratory indices did not differ. The primary outcome measure – ventilation – was required in 6
43 controls and 4 patients on CP (risk ratio 0.67 95% CI 0.22 – 2.0, $p = 0.72$); mean time on ventilation
44 was 10.5 days in the control against 8.2 days in patients on CP ($p = 0.81$). There were no differences
45 in secondary measures at the end of the study. Two patients died in the control and one patient in
46 the CP arm.

47 **Conclusion.** There were no significant differences in the primary or secondary outcome measures
48 between CP and standard therapy though fewer patients required ventilation and for a shorter period
49 of time. The study showed that CP therapy appears to be safe and it is feasible to perform a
50 definitive phase 3 clinical trial using this study protocol.

51

52 **Introduction**

53 Coronavirus disease 2019 (COVID-19) is caused by the severe acute respiratory syndrome
54 coronavirus 2 (SARS-CoV-2) and has developed into a pandemic with serious global public health
55 and economic sequelae. As of October 31st 2020, more than 46 million cases have been confirmed
56 worldwide leading to over 1,100,000 deaths¹. There is no vaccine available, though several are
57 currently in development in clinical trials. There have been a number of reports of medication such
58 as remdesivir that have shown efficacy with shorter time to recovery having antiviral properties
59 with efficacy against SARS-CoV-2. ²

60 Plasma therapy using Convalescent Plasma (CP) transfusion refers to a form of passive
61 immunization, where neutralizing antibodies from a recovered donor are injected in the infected
62 patient with the aim of altering the course of the disease. This has been shown to be effective in
63 severe acute respiratory syndrome³, Ebola virus infection ⁴ and in H1N1 influenza⁵. More recently
64 there has been a report of the use of CP in the treatment of 5 ventilated COVID-19 patients with the
65 suggestion of expedited recovery as the patients improved 1 week after the transfusion⁶. A
66 randomized trial with CP therapy in severely and critically ill COVID-19 patients undertaken in
67 China was stopped early as recruitment slowed down due to the decrease in COVID-19 cases in
68 China⁷. An open label Expanded Access Program in the US studied the effect on CP on mortality in
69 more than 35,000 participants with COVID-19 that concluded that CP transfusion with high
70 antibody level and early during admission was associated with decreased mortality⁸. However, no
71 studies have been undertaken with CP therapy in hypoxic patients and therefore this pilot trial was
72 undertaken to inform the design of a definitive study.

73 74 **Methods**

75
76 This was a prospective, randomized, controlled open label pilot study involving 40 patients with
77 severe COVID-19 disease confirmed by RT-PCR testing⁹. All patients gave written informed
78 consent. This study was approved by the National COVID-19 Research Committee, and the Bahrain
79 Defence Force Hospital Ethics committee and was conducted in accordance with the Declaration of
80 Helsinki and local regulations. The trial was registered in clinicaltrials.gov with registration number
81 NCT04356534. The trial was conducted upon the approved protocol by the National Research and
82 Ethics committee. The study protocol is attached in the Appendix.

83 **Participants**

84 Patients were recruited from two medical centres. The study recruitment was from April, 2020, to
85 June, 2020.

86 **Inclusion Criteria**

87 Inclusion criteria were: (1) signed informed consent; (2) aged at least 21 years; (3) COVID-19
88 diagnosis based on polymerase chain reaction (PCR) testing; (5) Hypoxia (Oxygen saturation of
89 less than or equal 92% on air, or $PO_2 < 60\text{mmHg}$ in arterial blood gas, or arterial partial pressure
90 of oxygen (PaO_2)/fraction of inspired oxygen (FIO₂) of 300 or less) and patient requiring oxygen
91 therapy (6) pneumonia confirmed by chest imaging.

92 **Exclusion Criteria**

93 Exclusion criteria were the following: (1) Patients with mild disease not requiring oxygen therapy;
94 (2) Patients with normal CXR or CT scan; (3) Patients requiring ventilatory support (invasive or
95 non-invasive); (4) Patients with a history of allergy to plasma, sodium citrate or methylene blue, or
96 those with a history of autoimmune disease or selective IGA deficiency.

97 **Randomization**

98 Following informed consent and screening, the patients were block randomised (in blocks of 4) by
99 computer-generated random numbering to either the standard therapy or CP arms (Figure 1).

100 Patients and clinicians were not blinded to the treatment given.

101 **Convalescent Plasma donors**

102 Patients who had recovered from COVID-19 and had been discharged from hospital for more than 2
103 weeks were approached to be volunteer donors. The criteria for donors included (1) ability to give
104 informed consent; (2) men or nulliparous women (all women had a pregnancy test except for
105 postmenopausal women); (3) PCR COVID-19 negative from respiratory tract; (4) patients were
106 symptom free; (5) patients above the ages of 21; (6) body weight more than 50kg; (7) met all donor
107 selection criteria employed for routine plasma collection and plasmapheresis procedures at the
108 collection centre. Convalescent plasma collection was performed followed by plasma extraction as
109 detailed.

110 COVID-19 CP collection and handling was undertaken at Bahrain Defence Force Hospital Blood
111 Bank. History and demographics were obtained from each of the plasma donors who met all donor
112 selection criteria employed for routine plasma collection and plasmapheresis procedures at the
113 collection center. Approximately 450 ml of whole blood was venesected together with testing for

114 anti-SARS-CoV-2 antibody titres.

115

116 Whole blood units were separated into packed red blood cells and plasma; the plasma was removed
117 and stored at ≤ -18 °C. Laboratory tests including blood group (ABO/Rh), antibody screening,
118 blood phenotype and transfusion-transmissible infections screening (which includes hepatitis B
119 virus, hepatitis C virus, HIV, and syphilis). Convalescent compatible plasma was thawed and stored
120 at 2°C - 6°C for 24 hours. Antibody levels were measured using Lansionbio COVID-19 IgM/IgG
121 Test kit (Lansion Biotechnology Co., Ltd, China).

122 **Convalescent Plasma Transfusion**

123 ABO matched CP units were selected for transfusion and transfused into the COVID-19 patients
124 using standard clinical transfusion procedures.

125 The dosage of CP was be 400 mL, given as 200ml over 2hrs over 2 successive days; the infusion
126 rate was monitored and amended if there was a risk of fluid overload.

127 Patients prior to CP therapy were on standard supportive treatment including control of fever
128 (paracetamol) and possible therapy including antiviral medications, Tocilizumab and antibacterial
129 medication.

130 **Standard Supportive Treatment**

131 The standard supportive treatment included control of fever (paracetamol) and possible therapy
132 including antiviral medications, Tocilizumab and antibacterial medication.

133 **Primary Outcome Measure**

134 The primary end points were requirement for invasive or non-invasive ventilation, and, in patients
135 who required ventilation, the duration of ventilation.

136 **Secondary Outcome Measures**

137 Secondary outcome measures included C reactive protein, procalcitonin, lactate dehydrogenase,
138 troponin, ferritin, D-Dimer, brain natriuretic peptide, lactate changes and 28day mortality rate

139 **Laboratory measurements**

140 White blood cell count was measured by flow cytometry, lactate dehydrogenase (LDH) was
141 measured using a kinetic method, C-reactive protein (CRP) and D-Dimer measured by an immuno-

142 turbidimetric assay, Troponin, Ferritin and procalcitonin were measured by an
143 electrochemiluminescence immunoassay according to the manufacturers' instructions.

144

145

146 **Secondary analysis**

147

148 Measurement of the effect of early CP transfusion (less than 3 days from admission) compared to
149 late transfusion for the requirement of ventilation was undertaken. Further analysis was done to
150 compare the mean antibody level of the CP on the requirement for ventilation.

151 **Statistical analysis**

152

153 Power and sample size for pilot studies was based on Birkett and Day¹⁰. They concluded that a
154 minimum of 20 degrees-of-freedom was required to estimate effect size and variability for normally
155 distributed variables and hence 20 patients per group were recruited in this study; no allowance was
156 made for dropouts, who are unlikely to be an issue in a study of this sort.

157 Baseline continuously distributed data are presented as means and standard deviations unless the
158 data are skewed in which case the data median (25th/75th centiles) are presented; categorical data
159 are shown by number and percent. Intention to treat analysis was used throughout.

160 For all statistical analyses, a two-tailed $P < 0.05$ is considered to indicate statistical significance.

161 Time to event analysis and logistic regression are used to analyse event-related outcomes. Effect
162 size for secondary outcomes is shown as the Hodges-Lehmann median difference and its associated
163 confidence interval, calculated using the community-contributed Stata command `cendiff`¹¹. It should
164 be noted that this is the median of all pairwise differences between the groups and does not
165 correspond to the difference between the medians of the two groups.

166 Statistical analysis were performed using the Stata (StataCorp. College Station, TX: StataCorp LP,
167 USA).

168

169 **Results**

170
171 The participant demographic, clinical and biochemical characteristics are shown in Table 1 and
172 medication after randomization is shown in Table 2. The two groups showed similar baseline
173 epidemiological characteristics. The CP group showed higher ferritin levels ($p=0.049$); however,
174 respiratory indices did not differ. There were more men than women, reflecting the demographics
175 of the workforce in Bahrain.

176 A total of 6 controls (30%) and 4 CP patients (20%) were ventilated (risk ratio 0.67 95%CI 0.22 –
177 2.0, $p=0.72$). Primary outcome measure, time to ventilation was not different ($P=0.52$, logrank test;
178 Figure 2); time on ventilation did not differ (10.5 days control; 8.25 days CP (exact $p=0.809$)).
179 Steroids were used in 3 control patients and none of the CP patients with no difference between
180 groups ($P=0.342$). To detect a difference at 90% power, alpha 0.05, with a risk ratio of 0.7 and risk
181 in control 20%, a sample size of 822 in each group would be needed.

182 Table 3 shows the medians of secondary outcomes at discharge in patients who were discharged
183 alive (18 control and 19 CP). The table also shows the Hodges Lehman median differences between
184 the groups, with their associated confidence intervals. Significance levels are based on the
185 Wilcoxon Mann-Whitney rank sum test.

186 The CP antibody level was available for 13 participants (mean 63.8 AU/mL \pm sd 46.8,
187 median 54.5). The patients who required a ventilator and received CP had a mean antibody level
188 of 84.95 AU/mL (SD 13.72, SE 7.9, N=3), whilst those that did not require
189 mechanical ventilation had a mean of 57.48 AU/mL (SD 51.8, SE 16.4, N=10; $p=0.24$).

190 30% of patients who received early CP (less than 3 days from admission) required ventilation. None
191 of the patients who received CP after 3 days from admission required ventilation. Patients who
192 received early CP had a mean antibody level of 82 AU/mL (SD 23, SE 9.5, N=6). Those who
193 received CP after 3 days had a mean titre 49 AU/mL (SD 58, SE 22, N=7) ($p=0.06$, rank sum test).

194 Two patients died in the control and one patient in the CP arm and their secondary outcome data
195 were not included in Table 3

196 **Adverse Events**

197
198 Three patients treated with plasma reported adverse events during the study that were not
199 considered to be related to therapy: one with diarrhoea and vomiting that settled spontaneously; one
200 with constipation and one desaturated transiently after the infusion.

201

202 Discussion

203
204 In this pilot study, the CP group appeared to have a higher systemic inflammatory response shown
205 by the increased ferritin levels and more patients with chronic lung disease were included, a known
206 risk factor for more severe disease¹²; however, respiratory indices did not differ between the
207 groups. While the CP therapy group had fewer patients deteriorating to ventilation (primary
208 outcome), and the duration of ventilation was less, this did not differ significantly from the standard
209 therapy group. These results are in accordance with a larger study done in China by Ling Li et al,
210 that was stopped prematurely due to the decrease in COVID 19 cases⁷; however, as shown in this
211 pilot, it is likely that trial was underpowered as an estimated sample size of over 822 in each group
212 may be required to show a difference.

213 Steroids have been shown to be effective in COVID-19¹³; however, at the time of the study this
214 evidence was not known and hence steroids were used at the discretion of the physicians. Steroids
215 were used on 3 patients on standard therapy, none of the CP patients received steroids, but the
216 sample size was inadequate to justify a hypothesis test. Of note, in the study by Ling Li et al,
217 45.6% CP arm and 32.7% of control arm were given steroids that may have masked the CP effect⁷,
218 and in addition, the impact of Chinese herbal medicines (used in over 50% of patients) is unclear in
219 COVID-19⁷. In this study, no subject received Remdesivir, but Hydroxychloroquine, Ribavirin and
220 Lopinavir/ritonavir were used, though to date they have not been reported to be effective in
221 COVID-19 infection^{14 15 16}. This pilot in accord with others^{7 17 18} indicated that CP therapy was
222 safe with only three transient adverse reactions being recorded. The safety of plasma was assessed
223 in an observational study in 20,000 hospitalized patients in the US and it reported low incidence
224 (<1%) of serious adverse events¹⁸. Sanfilippo et al highlighted that plasma transfusion can be
225 harmful in COVID19 as plasma contains procoagulant factors, and COVID19 represents a unique
226 scenario as they tend to have an increased risk for thrombosis¹⁹. The prothrombotic risk with
227 plasma transfusion was not investigated in our study nor in other studies, and it has been suggested
228 recently that the potential harm of the non-immune components of convalescent plasma should be
229 studied, especially the prothrombotic risk.²⁰

230
231 Patients who received early CP (less than 3 days from admission) had a higher mean antibody
232 level in the transfused plasma, than those that received CP after 3 days, though the difference was
233 not significant. A previous study reported that patients who received early CP and with
234 higher antibody titres showed a better clinical outcome⁸; however, this pilot was not adequately
235 powered to test the effect of early plasma in comparison to late plasma administration.

236 The CP collected from donors showed variations in mean antibody level, some extending to very
237 low levels. The variability in the antibody level can have an effect on the effectiveness of plasma
238 and can underestimate the effect of CP in this trial. The FDA have given recommendations to use
239 CP with high antibody titre only ²¹, to prevent transfusion of CP with low antibody levels that can
240 be ineffective.

241 Our trial result was also in agreement with a recent randomized trial conducted in India in 464
242 adults with COVID19. Agarwal et al mentioned that convalescent plasma was not associated with a
243 reduction in progression to severe covid-19 or all-cause mortality. A subgroup analysis showed no
244 difference in the outcome even after stratifying on the presence neutralizing antibody levels (>
245 1:20). ²²

246 A randomized trial comparing convalescent plasma with standard of care therapy in patients
247 hospitalized for COVID-19 in the Netherlands was stopped early after observing that more than
248 79% of patients randomized to the plasma arm had median antibody titres comparable to the plasma
249 donors, prior to receiving the plasma transfusion. There was no significant difference in the median
250 neutralizing antibody titre between recipients and donors, despite patients being randomized within
251 10 days of symptom onset. This may indicate that measuring the antibody titre of patients is
252 important in order to select those patient with low a antibody titre that might benefit from CP
253 transfusion. ²³

254 The main limitations of this study were that it was pilot whose main purpose was to guide the
255 design of a definitive study of CP therapy, and as a consequence it lacks the statistical power to
256 conduct outcome hypothesis tests. Determination of the optimal antibody titre from the donors
257 should also be undertaken that was not done in this study, as well a measurement of antibody titre in
258 the recipients before and after the infusions. Moreover, the quantification method for the antibody
259 levels could have been improved and using the neutralizing antibody titre would have been more
260 appropriate; however, at the time of the study, an authorized neutralizing antibody titre test was not
261 available. Furthermore, the antibody titres were also not measured for our patients on
262 randomization.

263 This pilot study showed that it is feasible to perform a phase 3 randomized controlled trial on a
264 larger sample size to determine the effect of plasma, using the current protocol. For a definitive
265 study, the following are suggested modifications 1) Including only plasma with high titre antibody,
266 (defined as ≥ 250)²¹; 2) Include only recipients with low antibody titre levels; 3) Serial monitoring of
267 PaO₂:FiO₂ Ratio in patients ; 4) Using of “hard” composite outcome of death or severe ARDS

268 denoted by PaO₂:FiO₂ Ratio <100 ; 5) Studying safety endpoint regarding thrombosis in patients
269 using plasma.

270

271 In conclusion, there were no significant differences in the primary or secondary outcome measures
272 between CP and standard therapy though fewer patients required ventilation and for a shorter period
273 of time. The study showed that CP therapy appears to be safe and it is feasible to perform a
274 definitive phase 3 clinical trial using this study protocol.

275 **Acknowledgements**

276

277 We are very grateful for the support in this trial by our fellow colleagues from physicians and
278 nurses who have worked hard throughout the pandemic and specially during the trial period.

279 Dr Omar Yaghi, Dr. Bandar Alnajdi, Dr. Hajer Alahmadi, Dr. Reem Almehzae, Dr. Layla Al
280 Mutawa, Dr. Mahmood Tooq, Nurse Shafeeqa Hasan Yousif, Nurse Abdulla Mohammed Al-
281 Ghadban, Nurse Hasan Hameed Hasan, Nurse Hamad Yusuf Habib, Nurse Mohamed Habib
282 Hussain, Nurse Ali Abdulhadi Ali, Dr. Abdulla Alfadhel, Dr. Dana Alsharqi, Dr. Fatema Nabeel
283 Nedham, Dr. Rashid Al Hasan, Dr. Ahmed Al Ansari, Dr. Maha Bukamal, Dr. Manar Al Sulaiti,
284 Dr. Alya AlDoseri, Nurse Ghaida Fareed Ahmed Hasan, Nurse Elham Alfaraj, Nurse Abdulla
285 Aman, Nurse Mariam Burshaeed, Nurse Manar Aldoseri, Nurse Ammar AlAthamneh, Nurse
286 AlAnood Abdulrahman, Nurse Mariam Hasan Mohammed, Nurse Fatima Basheer, Nurse Ebtisam
287 Meshal Saleh, Nurse Tareq Hasan Abdulrahman, Nurse Mariam Saleh Barshed Nurse Shouq Nader
288 Hamada

289 We would also like to extend our gratitude to all health care workers and first responders worldwide
290 and especially in Bahrain, who work day and night to protect the people and fight the virus.

291

292 Table 1. Subject demographics, clinical and laboratory characteristics at baseline

Factor	Level	Control	Plasma Arm	p-value
N		20	20	
Age, mean (SD)		50.7 (12.5)	52.6 (14.9)	0.66
Sex	Men	15 (75%)	17 (85%)	0.43
	Women	5 (25%)	3 (15%)	
Smoker		0 (0%)	0 (0%)	
Diabetes		9 (45%)	7 (35%)	0.52
Hypertension		5 (25%)	5 (25%)	1.0
Cardiac diseases		2 (10%)	2 (10%)	1.0
Chronic kidney disease		1 (5%)	1 (5%)	1.0
Chronic lung disease		0 (0%)	3 (15%)	0.072
Chronic Liver disease		0 (0%)	0 (0%)	
Oxygenation device required on admission	Nasal Cannula or face mask	19 (95%)	17 (85%)	1.0
	Nonrebreather mask or High Flow Nasal Cannula	1 (5%)	3 (15%)	
PaO ₂ :Fio ₂ , mean (SD)		232 (56.8)	220 (60.9)	0.52
Labs on admission				
WBC, mean (SD)		7.0 (4.0)	5.9 (2.0)	0.27
LDH (N=35), mean (SD)		345 (91.1)	420 (172.2)	0.11
CRP, mean (SD)		91 (52)	110 (63)	0.31
D-Dimer (N=25), mean (SD)		0.5 (0.2)	1.3 (1.3)	<0.001**
Ferritin (N=39), mean (SD)		631 (460)	1045 (935)	0.049**
Steroids	Yes	4 (20%)	1 (5%)	0.15
** Wilcoxon Mann-Whitney test				

293

294 Table 2. Medication given after randomization

Medication	Control	Plasma
Hydroxychloroquine	20	17
Lopinavir/ritonavir	17	17
Ribavirin	7	5
Azithromycin	18	17
Peginterfeon	5	7
tocilizumab	6	6
Methyl Prednisolone	4	1
Antibiotics	20	20
Anticoagultaion (LMWH/Heparin)	20	19
PPI	12	7
ACEi/ARB	4	3
Calcium Channel blocker	3	5
Beta blocker	3	4
Aspirin	6	3
Diuretics	6	4
Statin	3	0
Insulin	6	8
Metformin	5	2
Other Oral antidiabetic	2	0
Carbimazole	1	0
Thyroxine	1	1
Allopurinol	1	0
Acetylcysteine	2	1

295

296

297

298 **Table 3.** Secondary outcome measures between plasma (n=20) and control patients (n=20)

	N control	Median control	N Plasma	Median Plasma	Median difference	95% CI			P (exact)
Total number of patients	18		19						
WBC on discharge	18	6.8	19	5.5	1.48	-0.34	–	3.39	0.128
LDH on discharge	18	242	18	236	6	-44	–	53	0.713
CRP on discharge	18	2.4	19	3.9	-1.75	-5.38	–	0.06	0.043
Troponin on discharge	18	0.0	18	0.0	0	-0.01	–	0.00	0.141
Ferritin on Discharge	18	416	18	779	-249	-611	–	-19	0.029
D Dimer on discharge	14	0.5	17	0.8	-0.33	-1.06	–	0.08	0.115
Procalcitonin on discharge	17	0.05	18	0.05	0	-0.03	–	0.03	0.980

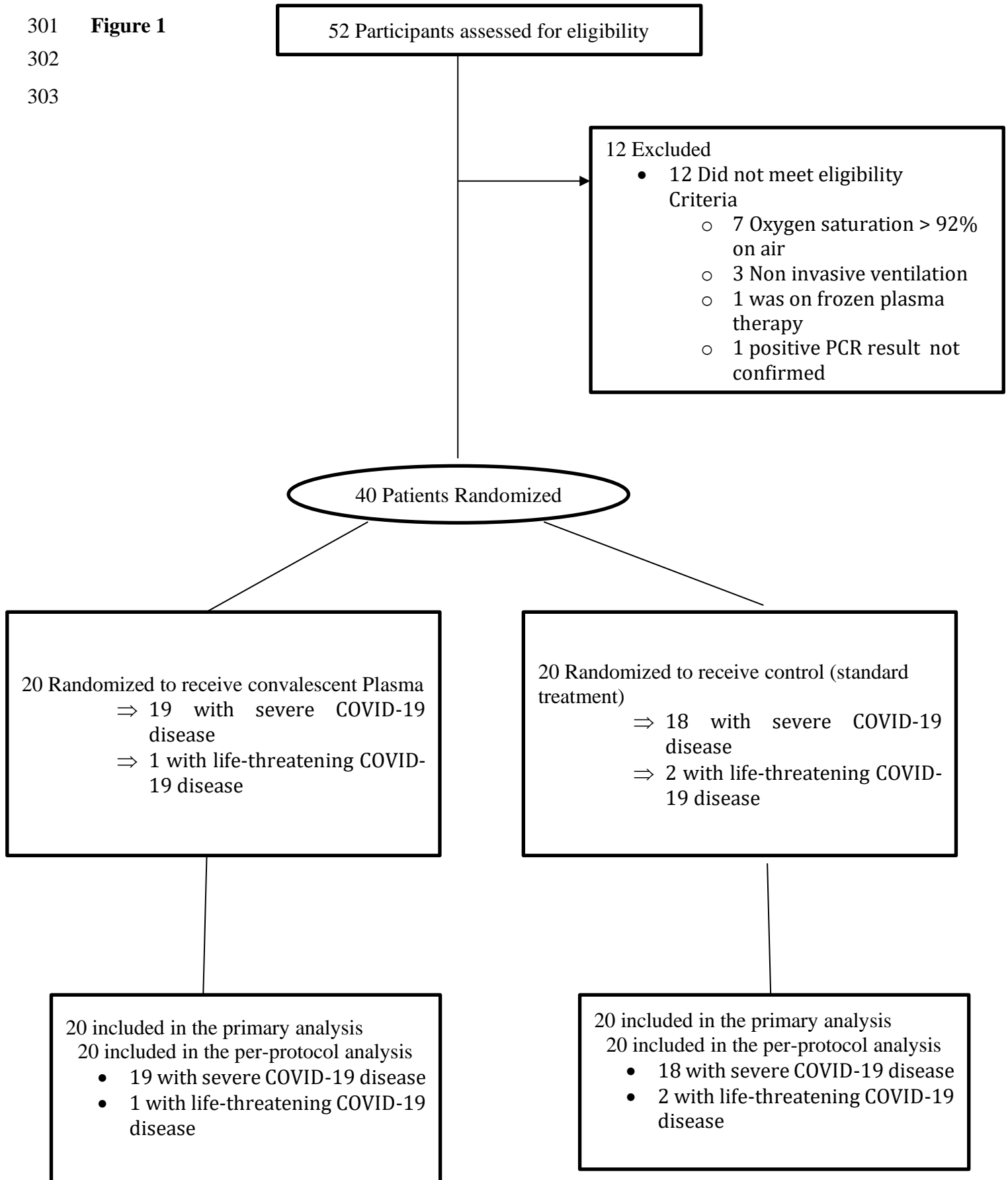
299

300

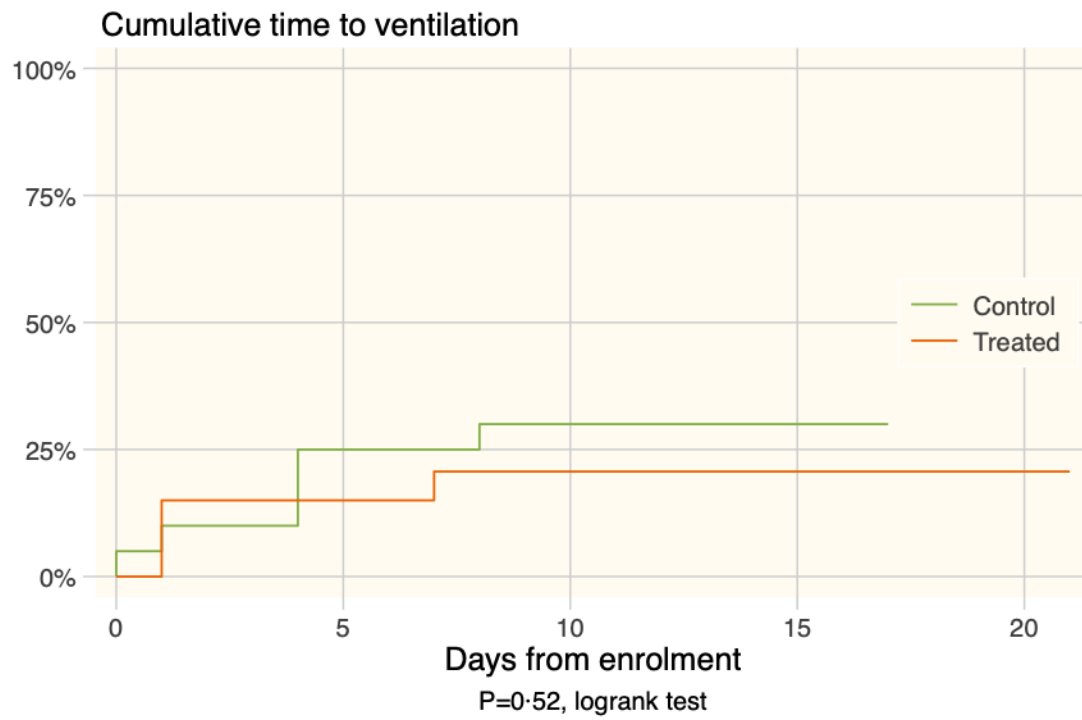
301 **Figure 1**

302

303



304
305 Figure 2. The plot shows cumulative ventilation rates for each group:



306
307
308
309
310

311

312 **References**

- 313 1. Coronavirus Update (Live): 46,432,714 Cases and 1,200,927 Deaths from COVID-19
314 Virus Pandemic - Worldometer. Worldometers.info.
315 <https://www.worldometers.info/coronavirus/>
- 316 2. Beigel JH, Tomashek KM, Dodd LE, et al. Remdesivir for the Treatment of Covid-19 -
317 Preliminary Report. *The New England journal of medicine*. May 22
318 2020;doi:10.1056/NEJMoa2007764
- 319 3. Soo YO, Cheng Y, Wong R, et al. Retrospective comparison of convalescent plasma with
320 continuing high-dose methylprednisolone treatment in SARS patients. *Clinical microbiology
321 and infection : the official publication of the European Society of Clinical Microbiology and
322 Infectious Diseases*. Jul 2004;10(7):676-8. doi:10.1111/j.1469-0691.2004.00956.x
- 323 4. Sahr F, Ansumana R, Massaquoi TA, et al. Evaluation of convalescent whole blood for
324 treating Ebola Virus Disease in Freetown, Sierra Leone. *The Journal of infection*. Mar
325 2017;74(3):302-309. doi:10.1016/j.jinf.2016.11.009
- 326 5. Hung IF, To KK, Lee CK, et al. Convalescent plasma treatment reduced mortality in
327 patients with severe pandemic influenza A (H1N1) 2009 virus infection. *Clinical infectious
328 diseases : an official publication of the Infectious Diseases Society of America*. Feb 15
329 2011;52(4):447-56. doi:10.1093/cid/ciq106
- 330 6. Shen C, Wang Z, Zhao F, et al. Treatment of 5 Critically Ill Patients With COVID-19 With
331 Convalescent Plasma. *JAMA : the journal of the American Medical Association*. Mar 27
332 2020;doi:10.1001/jama.2020.4783
- 333 7. Li L, Zhang W, Hu Y, et al. Effect of Convalescent Plasma Therapy on Time to Clinical
334 Improvement in Patients With Severe and Life-threatening COVID-19: A Randomized Clinical
335 Trial. *JAMA : the journal of the American Medical Association*. Jun 3 2020;324(5):1-11.
336 doi:10.1001/jama.2020.10044
- 337 8. Joyner MJ, Senefeld JW, Klassen SA, et al. Effect of Convalescent Plasma on Mortality
338 among Hospitalized Patients with COVID-19: Initial Three-Month Experience. *medRxiv : the
339 preprint server for health sciences*. Aug 12 2020;doi:10.1101/2020.08.12.20169359
- 340 9. Corman VM, Landt O, Kaiser M, et al. Detection of 2019 novel coronavirus (2019-nCoV)
341 by real-time RT-PCR. *Euro Surveill*. Jan 2020;25(3)doi:10.2807/1560-
342 7917.Es.2020.25.3.2000045
- 343 10. Birkett MA, Day SJ. Internal pilot studies for estimating sample size. *Stat Med*. Dec 15-
344 30 1994;13(23-24):2455-63.
- 345 11. Newson R. Confidence intervals for rank statistics: Percentile slopes, differences, and
346 ratios. *The Stata Journal*. 2006;6(4):497-520.
- 347 12. Preliminary Estimates of the Prevalence of Selected Underlying Health Conditions
348 Among Patients with Coronavirus Disease 2019 - United States, February 12-March 28, 2020.
349 *MMWR Morb Mortal Wkly Rep*. Apr 3 2020;69(13):382-386. doi:10.15585/mmwr.mm6913e2
- 350 13. Ledford H. Coronavirus breakthrough: dexamethasone is first drug shown to save lives.
351 *Nature*. Jun 2020;582(7813):469. doi:10.1038/d41586-020-01824-5
- 352 14. Cao B, Wang Y, Wen D, et al. A Trial of Lopinavir-Ritonavir in Adults Hospitalized with
353 Severe Covid-19. *The New England journal of medicine*. May 7 2020;382(19):1787-1799.
354 doi:10.1056/NEJMoa2001282
- 355 15. Hung IF, Lung KC, Tso EY, et al. Triple combination of interferon beta-1b, lopinavir-
356 ritonavir, and ribavirin in the treatment of patients admitted to hospital with COVID-19: an
357 open-label, randomised, phase 2 trial. *Lancet*. May 30 2020;395(10238):1695-1704.
358 doi:10.1016/s0140-6736(20)31042-4

- 359 16. Cavalcanti AB, Zampieri FG, Rosa RG, et al. Hydroxychloroquine with or without
360 Azithromycin in Mild-to-Moderate Covid-19. *The New England journal of medicine*. Jul 23
361 2020;doi:10.1056/NEJMoa2019014
- 362 17. Joyner MJ, Wright RS, Fairweather D, et al. Early safety indicators of COVID-19
363 convalescent plasma in 5000 patients. *The Journal of clinical investigation*. Aug 10
364 2020;doi:10.1172/jci140200
- 365 18. Joyner MJ, Bruno KA, Klassen SA, et al. Safety Update: COVID-19 Convalescent Plasma
366 in 20,000 Hospitalized Patients. *Mayo Clinic proceedings Mayo Clinic*. Sep 2020;95(9):1888-
367 1897. doi:10.1016/j.mayocp.2020.06.028
- 368 19. Sanfilippo F, La Rosa V, Oliveri F, Astuto M. Convalescent plasma for COVID-19: the risk
369 of pulmonary embolism should not be underestimated! *Crit Care*. 2020:531. vol. 1.
- 370 20. Pathak EB. Convalescent plasma is ineffective for covid-19. *BMJ*. 2020;371:m4072.
371 doi:10.1136/bmj.m4072
- 372 21. Recommendations for Investigational COVID-19 Convalescent Plasma. Food and Drug
373 Administration. Accessed september 2, 2020, [https://www.fda.gov/vaccines-blood-
374 biologics/investigational-new-drug-ind-or-device-exemption-ide-process-
375 cber/recommendations-investigational-covid-19-convalescent-plasma](https://www.fda.gov/vaccines-blood-biologics/investigational-new-drug-ind-or-device-exemption-ide-process-cber/recommendations-investigational-covid-19-convalescent-plasma)
- 376 22. Agarwal A, Mukherjee A, Kumar G, Chatterjee P, Bhatnagar T, Malhotra P. Convalescent
377 plasma in the management of moderate covid-19 in adults in India: open label phase II
378 multicentre randomised controlled trial (PLACID Trial). *Bmj*. Oct 22 2020;371:m3939.
379 doi:10.1136/bmj.m3939
- 380 23. Gharbharan A, Jordans CCE, GeurtsvanKessel C, et al. Convalescent Plasma for COVID-
381 19. A randomized clinical trial. *medRxiv*. 2020:2020.07.01.20139857.
382 doi:10.1101/2020.07.01.20139857
383