

Performance evaluation of the Simtomax[®]

CoronaCheck rapid diagnostic test

Ducrest P. J.^{1*}, Freymond A.², and Segura J.-M.^{2*}

1 GaDia SA, Route de l'île au bois 1A, 1870 Monthey, Switzerland

2 Institute of Life Technologies - School of Engineering; HES-SO // University of Applied
Sciences Western Switzerland; Sion; Switzerland

*Corresponding authors: Percevent Ducrest, GaDia SA, Route de l'île au bois 1A, 1870
Monthey, Switzerland, Tel. +41244719988, percevent.ducrest@gadia.net; Prof. Dr. Jean-
Manuel Segura, Institute of Life Technologies - School of Engineering; HES-SO // University
of Applied Sciences Western Switzerland; 1950 Sion; Switzerland, Tel. +41586068668,
jmanuel.segura@hevs.ch

NOTE: This preprint reports new research that has not been certified by peer review and should not be used to guide clinical practice.

25 **Abstract**

26 The aim of this study was to evaluate the diagnostic performance of Simtomax[®] CoronaCheck, a
27 serology rapid diagnostic test (RDT) for the detection of IgG and IgM against SARS-CoV-2. 48 plasma
28 samples positive for SARS-CoV-2 based on RT-PCR and 98 negative control samples were studied.
29 Diagnostic performance of the IgG/IgM RDT was assessed against RT-PCR and the electro-
30 chemiluminescence immunoassay (ECLIA) Elecsys[®] Anti-SARS-CoV-2 total Ig. Overall, the RDT
31 sensitivity was 92% (95% confidence interval [95%CI]: 79-97), specificity 97% (95% CI: 91-99%),
32 PPV 94% (95% CI: 81-98) and the NPV 96% (95% CI: 89-99). When considering only samples
33 collected \geq 15 days post-symptoms (DPS), the sensitivity increased to 98% (95%CI: 86-100) and the
34 specificity was 97% (95% CI: 91-99%). Two samples with 180 DPS were still positive for IgG.
35 Globally, this IgG/IgM RDT displayed a high diagnostic accuracy for SARS-CoV-2 IgG/IgM detection
36 in plasma samples in high COVID-19 prevalence settings. It could be effectively used, in absence of
37 facilities for routine diagnostic serology, for samples with a DPS between 15 and 180 days.

38

39

40 **Keywords:** SARS-CoV-2, COVID-19, serology, rapid test, lateral flow immunoassay

41

42

43 **Highlights**

- 44 - The rapid diagnostic test Simtomax CoronaCheck displays a high sensitivity of 98% and a high
45 specificity of 97% for SARS-CoV-2 IgG/IgM detection in plasma samples after 15 days post-
46 symptoms.
- 47 - The rapid diagnostic test Simtomax CoronaCheck can detect SARS-CoV-2 antibodies in plasma
48 up to 180 days after symptom onset.
- 49 - The rapid diagnostic test Simtomax CoronaCheck could be effectively used as an alternative to
50 serological analysis using laboratory facilities.

51

52

53 **Introduction**

54 SARS-CoV-2 is the etiological agent of a severe pneumonia first reported in Wuhan (Hubei, China),
55 called 2019 Coronavirus Disease (COVID-19). Protein sequence analysis of seven proteins showed that
56 the virus is related to the Severe Acute Respiratory Syndrome Coronavirus (SARS-CoV) and the Middle
57 East Respiratory Syndrome Coronavirus (MERS-CoV) with similar epidemiology (Kannan et al. 2020;
58 Zhou et al. 2020). Currently, the detection method for SARS-CoV-2 is based on viral RNA detection
59 using Reverse-Transcription PCR (RT-PCR) but other tests such as chest computed tomography (CT)
60 imaging or antigen/antibody testing can also be used (Li et al. 2020). Testing of specific antibodies
61 against SARS-CoV-2 in patient blood offers rapid, simple, highly sensitive diagnosis of COVID-19.
62 Moreover, serological analysis may be applied to detect past exposure to the virus and possibly if a
63 patient has developed immunity against the virus. It is widely accepted that IgM provide the first line of
64 defense during viral infections, prior to the generation of adaptive, high affinity IgG responses that are
65 important for long term immunity and immunological memory (Li et al. 2020b). Several authors
66 analyzed the antibody kinetics in COVID-19 patients. Zhao et al. (2020) showed that among 173
67 patients, the seroconversion sequentially appeared for total antibody, IgM and then IgG, with a median
68 time of 11, 12 and 14 days after symptom onset. The majority of antibodies are produced against the
69 most abundant protein of the virus, which is the Nucleocapsid protein (NP). Therefore, serological tests
70 that detect antibodies to NP should be the most sensitive. In addition, because the receptor-binding
71 domain of the Spike protein (RBD-S) is the host attachment protein, antibodies against RBD-S should
72 be very specific. Therefore, according to some authors, using one or both antigens should result in high
73 sensitivity and specificity (Sethuraman et al. 2020). The rapid diagnostic test (RDT) Simtomax®
74 CoronaCheck developed by Augurix SA (Switzerland) uses both antigens as described in To et al.
75 (2020). The gold nanoparticles used for detection are conjugated with SARS-CoV-2 Receptor Binding
76 Domain and Nucleocapsid protein with the aim to specifically bind IgM and/or IgG in COVID-19
77 positive samples. A recent clinical evaluation of Augurix RDT at the University Hospitals of Geneva
78 and Lausanne (Switzerland) demonstrated high diagnostic accuracy for IgG in whole-blood, plasma and
79 sera samples (Andrey et al. 2020; Coste et al. 2020).

80 The aim of this study was to evaluate the performance of this RDT in the case of plasma samples in a
81 high COVID-19 prevalence setting using as reference methods RT-PCR and an Electro-
82 chemiluminescence immunoassay (ECLIA) Elecsys® Anti-SARS-CoV-2 total Ig (Roche, Switzerland).

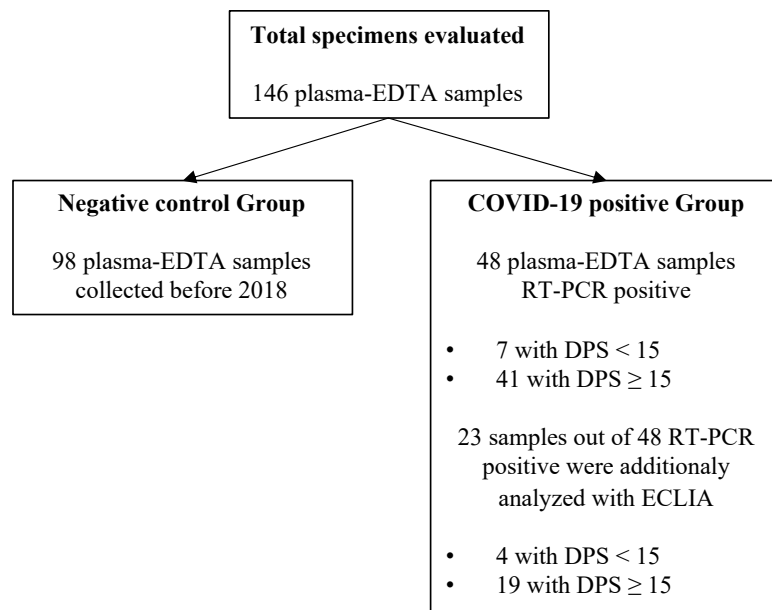
83

84 **Materials & Methods**

85 **Study population and blood sample collection**

86 48 anonymized leftovers of diagnostic plasma-EDTA specimen, supplied by INO Specimens BioBank,
87 ISB (Clermont-Ferrand, France), were used for this method evaluation (Fig. 1). Only laboratory-based
88 information was used in this study. All 48 samples were positive for SARS-CoV-2 based on RT-PCR
89 (Information provided by INO Specimens based on analysis using the BD SARS-CoV-2 reagent kit for
90 the BD Max system; Becton Dickinson and Co, US. All RT-PCR tests were done on nasopharyngeal
91 secretions. The median CT value was 25.6 (IQR 20.05-29.15)) and had been collected at days post
92 symptom (DPS) of at least 10 days. 23 out of 48 RT-PCR positive samples were additionally tested for
93 total immunoglobulin against COVID-19 with an electro-chemiluminescence immunoassay (ECLIA) at
94 INO Specimens BioBank (Figure 1). As negative controls, anonymized unmatched control plasma
95 samples (n=98), supplied by AbBaltis (Kent, UK) with a collection date before 2018, were used (Fig.
96 1).

97



98

99

Figure 1: Description of the plasma samples used in this study.

100

101

102 **Augurix IgM/IgG immunochromatographic rapid test**

103 Commercial CE-labeled SARS-CoV-2 IgM/IgG RDT were from Augurix (Switzerland). These tests can
104 be used either with capillary blood, whole blood, plasma or serum. One IgM/IgG rapid test per sample
105 was used. Following manufacturers' instructions, 10 μ L of plasma were applied for each sample. IgG
106 and IgM responses were read after 15 minutes following manufacturer's instructions, blinded to the
107 reference method results. The tests were considered COVID-19 positive if either the IgM line or the IgG
108 line or both lines were positive.

109

110 **Electro-chemiluminescence immunoassay Elecsys® Anti-SARS-CoV-2 total Ig**

111 ECLIA experiments were performed at INO Specimens Biobank. Elecsys® Anti-SARS-CoV-2 total Ig
112 (Roche, Switzerland) makes use of the nucleocapsid protein of SARS-CoV-2 as antigen. Total Ig was
113 analyzed according to manufacturer's instructions. The assays were run on a Cobas e 601 (Roche,
114 Switzerland) according to manufacturer's protocol. Positivity was defined by the manufacturer as a cut-
115 off index (COI) ≥ 1.0 .

116

117 **Study end points**

118 The primary end point was to assess the accuracy of IgG/IgM detection in plasma using Augurix
119 IgM/IgG RDT against the RT-PCR reference method, within a cohort of 48 RT-PCR confirmed COVID-
120 19, with day post-symptoms (DPS) of ≥ 10 days, and 98 control plasma samples. The secondary end
121 point was to assess Augurix IgG/IgM RDT performance against Electro-chemiluminescence
122 immunoassay (ECLIA), Elecsys® Anti-SARS-CoV-2 total Ig (Roche, Switzerland).

123

124 **Statistics**

125 Vassarstats online tool (www.vassarstats.net) was used to calculate sensitivity (SE), specificity (SP),
126 positive and negative predictive values (PPV, NPV), 95% confidence intervals, median, and
127 Interquartile range (IQR). Significance (p-values) were calculated using a Mann-Whitney U test.
128 Statistical significance was defined as $p < 0.05$.

129

130 **Results**

131 **Baseline characteristics**

132 The demographic characteristics of patients' samples was as follows: the 48 COVID-19-positive
133 samples were from patients older (median = 49 years old, IQR 33-58.75) compared to the healthy
134 patients (n=98) (median = 34.5 years old, IQR 18-44.75; $p < 0.05$). The proportion of females was 56%
135 (n=20) and 51% (n=50) in the COVID-19 positive and in the healthy control group, respectively.

136 Among the COVID-19 samples, the median delay between symptom onset and sampling was 21 days
137 (IQR 16-32 days), but not less than 10 days. The longest DPS (one single sample) was 180 days.

138 A detailed description of all the available information on the samples and the results of the various tests
139 is provided in the supplementary information.

140

141 **Specificity of IgG/IgM RDT on the negative control group**

142 The diagnostic specificity of the IgG/IgM RDT was assessed on the COVID-19 negative control group
143 with a sampling date before 2018 (n=98). The results are shown in Table 1 and 2. IgG/IgM RDT results

144 were negative in 95 of the 98 samples, i.e. in 96.9% of the cases (95%CI: 91-100%). Three discordant
145 results showed a positive IgM line (false positives). The specificity (SP) of the IgG/IgM RDT was
146 therefore 97% (95% CI: 91-99%).

147

148 **Sensitivity of IgG/IgM RDT on RT-PCR confirmed COVID-19 samples**

149 IgG/IgM RDT diagnostic sensitivity was assessed on the 48 samples positive for COVID-19 based on
150 RT-PCR. The results are shown in Table 1. Both methods revealed similar results in 44 of 48 samples,
151 i.e. 91.7% (95%CI: 79-97%). Four discordant results showed a negative result with the IgG/IgM RDT
152 both for IgG and IgM (false negatives). The resulting sensitivity (SE) of the IgG/IgM RDT was 92%
153 (95% CI: 79-97), while the positive predictive value (PPV; using a prevalence of $48 / 146 = 33\%$) was
154 94% (95% CI: 81-98) and the negative predictive value (NPV) 96% (95% CI: 89-99).

155 As shown in Table 1, most false-negative results (3 out of 4) exhibited a DPS between 10 and 15. Only
156 one false-negative result was observed with a $DPS \geq 15$. When taking into account exclusively the
157 results in the ≥ 15 DPS group, the IgG/IgM RDT sensitivity (SE) was 98% (95% CI: 86-100), while the
158 PPV (using a prevalence of $41 / 139 = 29\%$) was 93% (95% CI: 80-98) and the NPV 99% (95% CI: 94-
159 100). It is remarkable that two samples with days post symptoms (DPS) of respectively 170 and 180
160 days were still positive for IgG (Sup. Information).

161

162 **Table 1:** Diagnostic performance of Simtomax CoronaCheck RDT compared to RT-PCR as reference
163 method for different sample groups.

	SE % (95%CI)	SP % (95%CI)	PPV % (95%CI)	NPV % (95%CI)
All samples (n=146); Prevalence = $48 / 146 = 33\%$				
IgG/IgM RDT vs RT-PCR	92 (79-97)	97 (91-99)	94 (81-98)	96 (89-99)
Samples with DPS < 15 and negative controls (n=105); Prevalence = $7 / 105 = 6.7\%$				
IgG/IgM RDT vs RT-PCR	57 (20-88)	97 (91-99)	57 (20-88)	97 (91-99)
Samples with DPS ≥ 15 DPS and negative controls (n=139); Prevalence = $41 / 139 = 29\%$				

IgG/IgM RDT vs RT-PCR	98 (86-100)	97 (91-99)	93 (80-98)	99 (94-100)
------------------------------	-------------	------------	------------	-------------

164 RDT: Simtomax CoronaCheck rapid diagnostic test; SE: sensibility; SP: specificity; PPV: positive predictive
165 value; NPV: negative predictive value; ECLIA: Electro-chemiluminescence immunoassay

166

167 **Sensitivity of IgG/IgM RDT with an electro-chemiluminescence immunoassay as**
168 **reference method**

169 The accuracy of the IgG/IgM RDT was also assessed using an electro-chemiluminescence immunoassay
170 (ECLIA), Elecsys® Anti-SARS-CoV-2 total Ig, as reference method. ECLIA was conducted on a
171 random selection of 23 out of the 48 COVID-19 positive samples based on RT-PCR. The median cut-
172 off index (COI) was 63.4 (IQR 5-85 COI). The COI was not significant higher in the ≥ 15 DPS group
173 (76.9; IQR 5.8-86) compared to the < 15 DPS group (26.3; IQR 1-49.5; $p=0.384$). This might be at least
174 partly attributed to the small sample size of the < 15 DPS group ($n=4$). The results obtained using the
175 IgG/IgM RDT on the 23 samples are shown in Table 2. Both methods yielded similar results in 21 of
176 the 23 samples, i.e. in 91.3% of the cases (95%CI: 70-98%). Two discordant results showed an IgG/IgM
177 RDT negative result, both for IgG and IgM, while were positive by ECLIA (false negatives). This
178 resulted in an IgG/IgM RDT sensitivity (SE) of 91% (95% CI: 70-98), while the PPV (using a prevalence
179 of $23 / 121 = 19\%$) was 88% (95% CI: 67-97) and the NPV 98% (95% CI: 92-100) compared to ECLIA.
180 The two false-negative results exhibited a DPS between 10 and 15. When using exclusively the results
181 in the ≥ 15 DPS group, there was a complete agreement between the results of the IgG/IgM RDT and
182 ECLIA. In this case, the IgG/IgM RDT sensitivity (SE) was therefore 100% (95% CI: 79-100), while
183 the PPV was 86% (95% CI: 64-96) and the NPV 100% (95% CI: 95-100).

184

185 **Table 2:** Diagnostic performance of Simtomax CoronaCheck RDT compared to ECLIA total Ig as
186 reference method for different sample groups.

	SE % (95%CI)	SP % (95%CI)	PPV % (95%CI)	NPV % (95%CI)
All samples (n=121); Prevalence = 23 / 121 = 19%				

IgG/IgM RDT vs ECLIA	91 (70-98)	97 (91-99)	88 (67-97)	98 (92-100)
Samples with DPS < 15 and negative controls (n=102); Prevalence = 4 / 102 = 3.9 %				
IgG/IgM RDT vs ECLIA	50 (9-91)	97 (91-99)	40 (7-83)	98 (92-100)
Samples with DPS ≥ 15 DPS and negative controls (n=117); Prevalence = 19 / 117 = 16 %				
IgG/IgM RDT vs ECLIA	100 (79-100)	97 (91-99)	86 (64-96)	100 (95-100)

187

188 Discussion

189 The main finding of this evaluation study, using an unmatched case-control design including 67.1% of
 190 negative control samples, is that the diagnostic accuracy of IgG/IgM Augurix RDT on plasma samples
 191 when compared to RT-PCR confirmed cases displayed a SE of 92%, a SP of 97%, a PPV of 94% and a
 192 NPV of 96%. When compared to ECLIA positive samples, the diagnostic accuracy of IgG/IgM Augurix
 193 RDT displayed a SE of 91%, a SP of 97%, a PPV of 88% and a NPV of 98%. The sensitivity (SE) of
 194 IgG/IgM Augurix RDT is not significantly different for both reference methods ($p=0.756$) indicating a
 195 good correlation. The diagnostic accuracy of the RDT further increased when analyses were performed
 196 exclusively on samples collected after 15 DPS and exhibited excellent sensitivity (98%) and NPV
 197 (99%). For samples collected within a DPS < 15 days, the diagnostic performance was clearly poorer
 198 with 57%, 97%, 57% and 97% for SE, SP, PPV and NPV, respectively.

199 It is interesting to notice that the two false-negative results obtained with Augurix RDT corresponded
 200 to borderline samples in ECLIA (Cut-of index of 1.43 and 1.19) with a DPS between 10 and 15 days.

201 The ECLIA manufacturer defines positive samples when the cut-off index (COI) value is ≥ 1.0 . This
 202 finding indicates that the analytical sensitivity of Augurix RDT is lower than the ECLIA Elecsys® Anti-
 203 SARS-CoV-2 total Ig (Roche, Switzerland) and that insufficient analytical sensitivity might at least
 204 partly explain the poor performance of the RDT test at DPS < 15 days.

205 For samples with DPS > 15, there is a perfect agreement between ECLIA and Augurix RDT, which can
 206 be explained by the fact that both assays target the immune response against the full-length N protein of
 207 SARS-CoV-2. The overall good specificity of the Augurix RDT might be offered by the fact that it also
 208 targets the immune response against the Receptor binding domain (RBD) of S protein,

209 The overall performance, in particular for $DPS > 15$, indicates that Augurix RDT could be fit for purpose
210 in clinical settings where a high prevalence of COVID-19 prevails, especially in situations where ECLIA
211 is not available or cannot be reliably used. Diagnostic performance in low prevalence populations still
212 needs to be experimentally determined and it would be interesting to validate the results on larger
213 populations. The results of our study on plasma samples are similar with those recently published on
214 whole blood and plasma samples, which indicated a sensitivity of Augurix RDT between 93% and 100%
215 for samples with a DPS of >15 days. By contrast, our results differ from prior studies using Augurix and
216 other RDTs that observed a lower sensitivity of 56.4% for a DPS of > 21 days (Rudolf et al. 2020). A
217 first difference between the present study and the one of Rudolf et al. (2020) is that positive samples
218 were assessed here when either the IgM or the IgG band was positive, while in Rudolf et al, the results
219 were separated for the two lines, i.e. they assessed sensitivity for either the IgM or the IgG line. A second
220 possible partial explanation for the discrepancy is that the study by Rudolf et al included a large panel
221 of samples corresponding to varying severities of the symptoms. As this information is not available for
222 the plasma samples analyzed in our study, it is possible that they were collected from patients showing
223 more severe forms of COVID-19. On the other hand, the antibody titers in the plasma samples as
224 determined by ECLIA spanned a large range of concentration, which points towards the fact that the
225 samples in our study corresponded to various severities of COVID-19. A more comprehensive study on
226 a larger panel of well-defined sample might clarify these discrepancies. Concerning the specificity of
227 the test, the excellent performance observed in this study is in line with the results of preceding
228 publications (Andrey et al. 2020; Coste et al. 2020). Three control blood sample turned out to be IgM
229 positive by RDT. These samples were collected before 2018 and it seems that a cross-reaction with the
230 IgM line occurred leading to a false positive result. But overall, Augurix RDT might be a suitable choice
231 in situations where a high PPV is instrumental.

232 The second notable finding of this study lies in the fact that IgG seropositivity is still present 180 days
233 after symptom onset in spite of normal antibody decline (Long et al. 2020; Seow et al. 2020). To our
234 knowledge, it is the first time that SARS-CoV-2 IgG seropositivity is demonstrated with RDT 180 DPS.
235 This study indicates also that a certain titer of SARS-CoV-2 IgG is present constantly with a
236 concentration sufficient to be detectable with RDT, from 15 days to at least 180 days post symptoms.

237 This finding applies to the Augurix RDT and cannot be generalized to other RDTs currently available.
238 It would be interesting to quantitatively determine the level of IgG/IgM 180 days post symptoms onset
239 to confirm this finding obtained with a qualitative assay.
240 In addition, the test provided clear results without indeterminate or invalid measurements. There are
241 however several limitations to this study. First, we present here the results of a method evaluation study
242 and not a seroprevalence study. Therefore, the PPV obtained here (based on a 32.9% proportion of cases
243 defined as laboratory confirmed SARS-CoV-2 by RT-PCR) will be lower in a low prevalence setting,
244 e.g. when testing the asymptomatic population. Another limitation of this validation study lies in the
245 limited sample size leading to broad 95% confidence intervals, requiring confirmation of these data at a
246 larger scale. Also, here we used plasma and the test was performed in a laboratory environment; we may
247 expect different results in real-life at patients' bed and using capillary blood. Finally, our present
248 conclusions only apply to the Augurix RDT, and must not be generalized to other currently available
249 RDTs.
250 In conclusion, Augurix RDT is not meant to replace a SARS-CoV-2 RT-PCR diagnostic test in the first
251 week of the disease, but could be a reliable option for assessing the SARS-CoV-2 serology in moderate
252 to high COVID-19 prevalence settings, i.e. when testing the sub-population of individuals having
253 presented COVID-19 symptoms, especially in situations where automated ECLIA or ELISA are not
254 available, with samples collected between at least 15 days and up to 180 days after the onset of
255 symptoms.

256

257 **Ethical consideration**

258 This study was evaluated by the Ethics Committee of Canton de Vaud, Lausanne, Switzerland (CER-
259 VD) and they judged that it did not deserve a specific approval being only a quality assessment of
260 diagnostic tests with foreign residual samples.
261 All necessary patient/participant consent has been obtained by the supplier of residual samples and the
262 appropriate institutional forms have been archived.

263

264 **Acknowledgments**

265 We thank Augurix SA (Monthey, Switzerland) for providing Simtomax CoronaCheck RDTs free-of-
266 charge.

267

268 **Funding**

269 This research was financially supported by the HES-SO Valais-Wallis.

270

271 **Conflict of interest**

272 Percevent J Ducrest has a R&D mandate with Augurix SA, the manufacturer of the RDT used in this
273 study. Augurix SA had no role in the study design, the realization nor in result interpretation. The other
274 authors have no conflict of interest to disclose.

275

276 **Contributions**

277 **Percevent J Ducrest:** Conceptualization, Methodology, Investigation, Formal analysis, Writing -
278 Original Draft preparation. **Antoine Freymond:** Investigation, Formal analysis, Writing - Original Draft
279 preparation. **Jean-Manuel Segura:** Writing - Original Draft preparation, Writing - Review & Editing
280 preparation, Visualization

281

282 **References**

283 Andrey D.O., Cohen P., Meyer B., et al. 2020. Diagnostic accuracy of Augurix COVID-19 IgG
284 serology rapid test. Eur J Clin Invest. 50:e13357. <https://doi.org/10.1111/eci.13357>

285 Coste A.T., Jatou K., Papadimitriou-Oliveris M., Greub G., Croxatto A., 2020. Comparison of SARS-
286 CoV-2 serological tests with different antigen targets. medRxiv 2020.07.09.20149864.

287 <https://doi.org/10.1101/2020.07.09.20149864>

- 288 Kannan S., Shaik Syed Ali P., Sheeza A., Hemalatha K., 2020. COVID-19 (Novel Coronavirus 2019)
289 – recent trends. *European Review for Medical and Pharmacological Sciences*. 24, 2006-2011.
290 https://doi.org/10.26355/eurev_202002_20378
- 291 Li C., Zhao C., Bao J., Tang B., Wang Y., Gu B., 2020. Laboratory diagnosis of coronavirus disease-
292 2019 (COVID-19). *Clin Chim Acta*. 510, 35-46. <https://doi.org/10.1016/j.cca.2020.06.045>
- 293 Li Z., Yi Y., Luo X., et al. 2020. Development and clinical application of a rapid IgM-IgG combined
294 antibody test for SARS-CoV-2 infection diagnosis. *J Med Virol*. 92, 1518-1524.
295 <https://doi.org/10.1002/jmv.25727>
- 296 Long Q., Liu B., Deng H., et al. 2020. Antibody responses to SARS-CoV-2 in patients with COVID-
297 19. *Nat Med*. 26, 845–848. <https://doi.org/10.1038/s41591-020-0897-1>
- 298 Rudolf F., Kaltenbach H.M., Linnik J., Ruf M.T., Niederhauser C., Nickel B., Gyax D., Savic M.,
299 2020. Clinical Characterization of Eleven Lateral Flow Assays for Detection of COVID-19 Antibodies
300 in a Population. *medRxiv* 2020.08.18.20177204. <https://doi.org/10.1101/2020.08.18.20177204>
- 301 Seow J., Graham C., Merrick B., et al. 2020. Longitudinal evaluation and decline of antibody
302 responses in SARS-CoV-2 infection. *medRxiv* 2020.07.09.20148429.
303 <https://doi.org/10.1101/2020.07.09.20148429>
- 304 Sethuraman N., Jeremiah S.S., Ryo A. 2020. Interpreting Diagnostic Tests for SARS-CoV-2. *JAMA*.
305 323(22), 2249–2251. <https://doi.org/10.1001/jama.2020.8259>
- 306 To K.K.W., et al. 2020. Temporal profiles of viral load in posterior oropharyngeal saliva samples and
307 serum antibody responses during infection by SARS-CoV-2: an observational cohort study. *Lancet*
308 *Infect Dis*. 20, 565–74. [https://doi.org/10.1016/S1473-3099\(20\)30196-1](https://doi.org/10.1016/S1473-3099(20)30196-1)
- 309 Zhao J., Yuan Q., Wang H., Liu W., et al. 2020. Antibody Responses to SARS-CoV-2 in Patients with
310 Novel Coronavirus Disease. *Clinical Infectious Diseases*, ciaa344, <https://doi.org/10.1093/cid/ciaa344>

- 311 Zhou P., Yang X., Wang X., et al., 2020. Pneumonia outbreak associated with a new coronavirus of
312 probable bat origin, Nature. 579, 270-273. <https://doi.org/10.1038/s41586-020-2012-7>