

1

2 **Macronutrient mass intake explains**  
3 **deferential weight and fat loss in**  
4 **isocaloric diets**

5

6 **Francisco Arencibia-Albite<sup>1</sup> Anssi H. Manninen<sup>2</sup>**

7

8 <sup>1</sup>Universidad del Sagrado Corazón, Natural Sciences Department, PO BOX  
9 12383, San Juan PR 00914-0383, Puerto Rico. Email:  
10 franciscom.arencibia@sagrado.edu

11

12 <sup>2</sup>Dominus Nutrition Oy, Ylipääntie 438, 92220 Raahe, Finland. Email:  
13 anssi@dominusnutrition.fi

14

15 ***Corresponding author:* Anssi H. Manninen, Director of Research &**  
16 **Development at Dominus Nutrition Oy.**

17

18

19

20

21

22

23

24

25

## 26 **Summary**

27 Currently, obesity treatment rests on the “calories-in, calories-out” rule, formally named the energy  
28 balance theory (EBT). It maintains that body weight increases as food calories are greater than expended  
29 calories but decreases when the opposite occurs; hence, weight stability is expected at energy balance  
30 meaning that over time energy-in equals energy-out.<sup>1</sup> It follows that dietary regimens with identical energy  
31 content should evoke similar amounts of weight and fat loss with only minor differences that emerge from  
32 diet’s macronutrient composition<sup>7</sup>, e.g., diet-induced glycogen depletion and water excretion. A vast  
33 collection of evidence shows, however, that low-carbohydrate diets typically result in much greater weight  
34 and fat loss than isocaloric low-fat diets.<sup>7, 8, 9, 10, 11, 12</sup> Furthermore, our recent mathematical analysis  
35 demonstrated that weight stability coincides with a persistent energy imbalance and not otherwise.<sup>4</sup> As an  
36 alternative, the mass balance model (MBM) was proposed that fitted weight loss data and explained the  
37 often superior weight loss evoked by low-carbohydrate diets versus low-fat diets.<sup>4</sup> Here, we expand on  
38 these observations by computationally contrasting the predictions of both models in two scenarios  
39 described in the literature<sup>3, 16</sup>: altering the diet’s macronutrient composition while energy intake is kept at  
40 weight maintenance level; and the weight loss response as diet composition is changed under untreated  
41 type 1 diabetes. Our results indicate that MBM predictions are remarkably accurate while those of the EBT  
42 are clearly erroneous. These findings may represent the beginning of a paradigm shift in obesity research.

43 Keywords: obesity, weight loss, energy balance theory, mass balance model, macronutrients

44

## 45 **List of abbreviations**

46 MBM = mass balance model; MB = mass balance; EB = energy balance; EBT = energy balance theory; CIM =  
47 carbohydrate-insulin model; FFM = fat-free mass; FM = fat mass; EPM = energy-providing mass; VLCD =  
48 very-low-carbohydrate diet; KD = ketogenic diet; HCD = high-carbohydrate diet; ND = “normal diet”; BW =  
49 body weight; BF = body fat; EI = energy intake; EE = energy expenditure; T1D = type 1 diabetes; ECF = extra  
50 cellular fluid; Gly = glycogen; nEPM = non-energy-providing mass; AT = adaptive thermogenesis; PAL =  
51 physical activity level; RQ = respiratory quotient; GNG = gluconeogenesis; DNL = *de novo* lipogenesis; TG =  
52 triglycerides; HDL = high-density lipoprotein; LDL = low-density lipoprotein; HbA1c = Glycated hemoglobin;  
53 total-C = total cholesterol; MRI = magnetic resonance imaging; CT = computed tomography; NHANES =  
54 National Health and Nutrition Examination Survey; GI = glycemic index; GL = glycemic load; SGLTs = sodium-  
55 glucose transporters; GEEN = Global Energy Balance Network; MBNE = memory-based nutritional  
56 epidemiology.

57

## 58 **Introduction**

59 “The strongest and most evil spirits have so far advanced humanity the most: they have always rekindled  
60 the drowning passions – all ordered society puts the passion to sleep; they have always re-wakened the  
61 sense on comparison, of contradiction, of joy in the new, the daring, and the untried; they force men to  
62 meet the opinion with opinion, model with model [EBT vs. MBM]... The new is always *the evil...*”.

63 – Friedrich Nietzsche, *The Gay Science* (1882)

64 Macronutrients – proteins, fats and carbohydrates – are an important part of a diet, and as such, have been  
65 the subject of a great deal of discussion and controversy, especially among obesity researchers. According

66 to the energy balance theory (EBT), “[a] fundamental principle of nutrition and metabolism is that body  
67 weight change is associated with an imbalance between the energy content of food eaten and energy  
68 expended by the body to maintain life and to perform physical work.”<sup>1</sup> Many current approaches to obesity  
69 treatment are based on the EBT; however, neither behavioral prevention nor behavioral treatment is  
70 generally successful in practice. Furthermore, this theory has major limitations for explaining obesity, as  
71 reviewed by Wells and Siervo.<sup>2</sup> Weight stable obese individuals, for example, may experience substantial  
72 changes in body weight as a reaction to isocaloric modifications in diet. In many instances these body mass  
73 alterations are far greater than those expected from the macronutrient-induced changes in total body  
74 water.<sup>3</sup> Thus, the EBT is rendered inadequate in these circumstances.

75 Arencibia-Albite<sup>4</sup> has recently used mathematical methods to investigate EBT’s central claim:

76 *As energy balance approaches zero body weight becomes stable.*

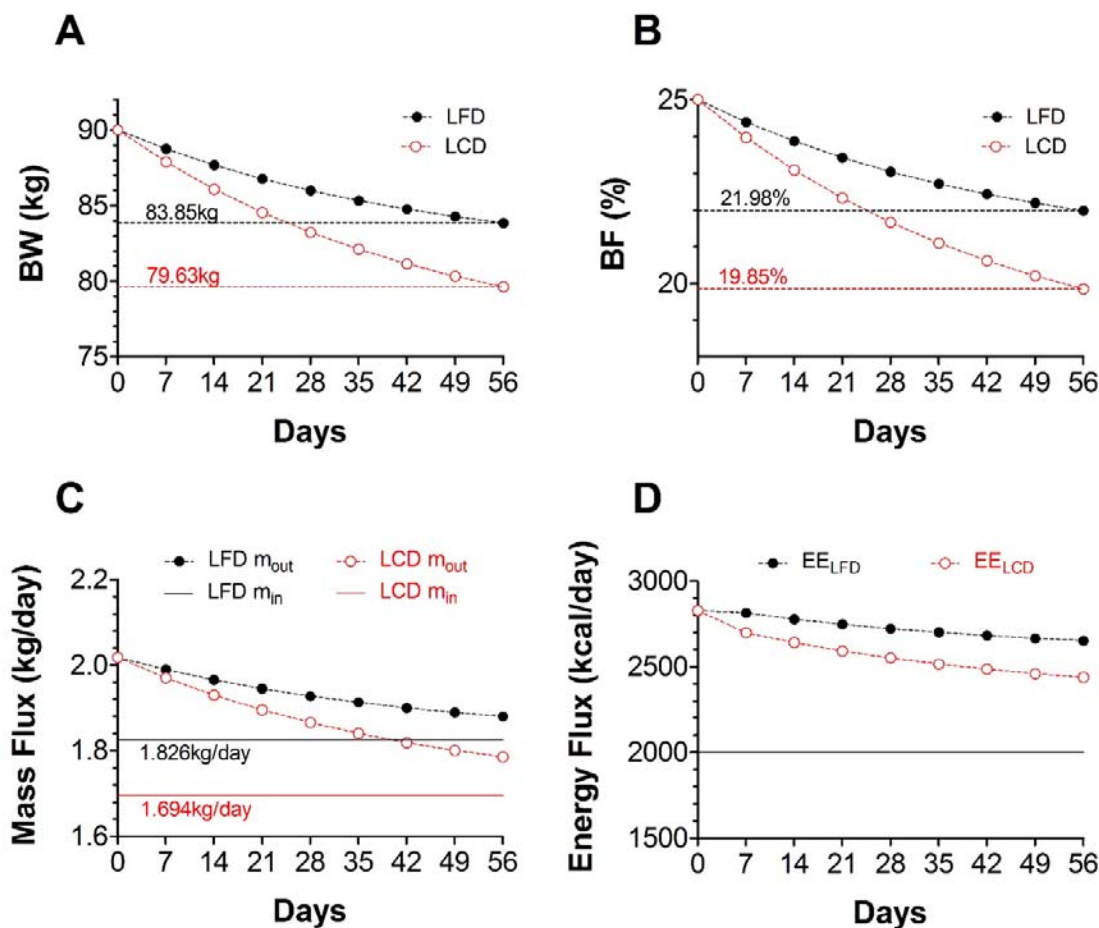
77 The conclusion of this paper is highly polemical – to put it mildly – and possibly represents the beginning of  
78 a paradigm shift:

79 *Body weight stability coincides with a persistent energy imbalance which is negative under low-fat diets but  
80 positive under low-carbohydrate diets.*

81 This signifies, then, that the EBT is an incorrect theory, and also explains why in numerous well-controlled  
82 studies negative energy balance measurements are frequently observed under a “normal diet” in weight  
83 stable populations.<sup>5, 6</sup> These findings do not represent a violation of the First Law of Thermodynamics, as it  
84 allows for any open system to express a positive or negative energy balance under a null mass change (**For  
85 further details, see Supplementary File 2**).

86 As an alternative to the EBT, the mass balance model (MBM) of obesity was proposed. It maintains in  
87 qualitative terms that *body weight fluctuations are ultimately dependent on the difference between daily  
88 nutrient mass intake and daily mass excretion* (e.g., elimination of macronutrient oxidation products) and  
89 NOT on energy imbalance. In its mathematical form the MBM fitted weight loss data from dietary  
90 interventions of low-carbohydrate diets (LCDs) versus isocaloric low-fat diets (LFDs) leading to a simple and  
91 convincing explanation for the often superior weight loss evoked by LCDs over LFDs (Figure 1).<sup>4</sup> This work  
92 compares the MBM predictions against those derived from the EBT; and it is convincingly demonstrated  
93 that in the experimental settings where the EBT makes erroneous forecasts the MBM results in remarkably  
94 accurate predictions.

95



96

97

98

99

100 **Figure 1. MBM simulation: LCD vs. LFD**

101 **A.** Two hypothetical overweight 90kg adult males with identical body composition and weight maintenance  
 102 energy intakes (2 750 kcal/day; 35% fat (F), 50% carbohydrate (C), 15% protein (P)) initiate two distinct  
 103 isocaloric diets (2 000 kcal/day): low-fat diet (LFD; 20% F, 65% C, 15% P) vs. low-carbohydrate diet (LCD;  
 104 70% F, 15% C, 15% P). Consistent with published feeding data<sup>7, 8, 9, 10, 11, 12</sup>, the MBM predicts that the LCD  
 105 results in greater weight loss in contrast to the LFD. Model parameters are as follows:  $BW_0 = 90\text{kg}$ ,  $FM_0 =$   
 106  $22.5\text{kg}$ ,  $nEPM = 1.41\text{kg}$ ,  $F_{loss} = 0.030833$ ,  $PAL = 1.5$ ,  $VO_2 = 4.32\text{ L}/[\text{kg} \times \text{day}]$ . **B.** The figure depicts the body fat  
 107 (BF) percentage changes that correspond to panel A. **C.** As shown, the LCD mass intake ( $m_{in}$ ) is small  
 108 relative to the eliminated mass ( $m_{out}$ ) and so the net daily mass loss is large (i.e.,  $|m_{in} - m_{out}|$ ). In the LFD  
 109 the net daily mass loss is, however, not as efficient since  $m_{in}$  cancels out a substantial fraction of  $m_{out}$   
 110 decelerating weight loss. LCDs are thus more effective in maximizing the net daily mass loss relative to LFDs  
 111 and consequently the former manifest a substantially larger cumulative weight loss than the latter. **D.** Daily  
 112 energy expenditure (EE) data from panel A. The horizontal line represents the daily energy intake.  
 113 According to the EBT, this graph suggests that the subject in the LFD should lose more weight than the one

114 in the LCD, which is not the case as illustrated in panel A. Energy imbalance is, therefore, not predicting the  
115 weight loss outcome in this intervention.

116

## 117 **Materials and Methods**

118 As noted above, this study compares the MBM predictions against those derived from the EBT.

### 119 **Mass Balance Model (MBM):**

120 For model derivation and details consult Arencibia-Albite<sup>4</sup> but, briefly, daily body weight (BW, in kg)  
121 fluctuations are given by:

$$122 \quad BW(t) = M / R + (BW_0 - M / R)(1 - R)^t$$

$$M = EPM + nEPM$$

$$R = F_{loss} - \rho_{O_2} \cdot PAL \cdot VO_2$$

123 where  $t$  is time in days;  $M$  is the average daily mass intake defined as the sum of the energy-providing mass  
124 (EPM; i.e., protein, fat, carbohydrate) plus the non-energy-providing mass (nEPM; i.e., water, insoluble  
125 fiber, vitamins and minerals);  $R$  is the average relative daily rate of mass excretion free of total daily  $O_2$   
126 uptake;  $BW_0$  is the initial body weight;  $F_{loss}$  is the average relative daily rate of mass excretion that includes  
127 of total daily  $O_2$  uptake;  $\rho_{O_2} = 1/770$  is  $O_2$  density in kg/L at 27<sup>o</sup> C and 1 ATM;  $PAL$  is a dimensionless  
128 number that represents the physical activity level computed as the ratio of total daily  $O_2$  uptake over the  
129 total daily resting  $O_2$  consumption; and  $VO_2$  is the specific daily resting  $O_2$  uptake in L/(kg x day).

130 The EMP parameter is adjusted according to:

$$131 \quad EPM = EI(x_C / \rho_C + x_F / \rho_F + x_P / \rho_P)$$

132 where  $EI$  is the energy intake;  $0 \leq x_i \leq 1$  is the energy fraction from  $i = C, F, P$ ; and  $\rho_i$  is the energy density  
133 of  $i$  with  $\rho_C = 4.2 \text{ kcal/g}$ ,  $\rho_F = 9.4 \text{ kcal/g}$ ,  $\rho_C = 4.7 \text{ kcal/g}$ . To simulate pancreatic  $\beta$ -cell death  $x_C = 0$   
134 as the bulk of ingested glucose is lost through urination.

135 Fat mass (FM) and fat free mass (FFM) alterations are given by:

$$136 \quad FM(t) = 10.4W \left\{ \frac{FM_0}{10.4} \exp \left[ \frac{(M/R - BW_0)[1 - (1-R)^t] + FM_0}{10.4} \right] \right\}$$

$$137 \quad FFM(t) = BW(t) - FM(t)$$

138  
139

140 where  $FM_0$  is the initial fat mass and  $W$  is the lambert  $W$  function.

141 In MBM simulations daily energy expenditure (EE) can be estimated by

$$142 \quad EE = (\text{kcal per } O_2L) \cdot PAL \cdot VO_2 \cdot BW$$

143 The first term at the right-hand side can be approximated with the diet's macronutrient composition and the  
144 following Weir formula<sup>13</sup>

145  $\text{kcal per O}_2\text{L} = 5.047x_C + 4.463x_P + 4.735x_F.$

146 **Energy Balance Theory (EBT):**

147 The quantitative form of the EBT use in this study is that of the United States National Institute of Health  
148 (NIH) *Body Weight Planner* developed by Hall *et al.*<sup>14</sup> A succinct model description is given below.

149 Glycogen (G), extracellular fluid (ECF), body fat (F<sub>b</sub>), lean tissue (L) and adaptive thermogenesis (AT) are  
150 modeled by following system of equations:

$$\begin{aligned} \frac{dG}{dt} &= (CI - CI_b (G/G_0)^2) / \rho_G \\ \frac{dECF}{dt} &= \frac{1}{[Na]} (\Delta Na_{diet} - \xi_{Na} (ECF - ECF_0) - \xi_{CI} (1 - CI/CI_b)) \\ 151 \quad \frac{dF_b}{dt} &= \left[ \frac{F_b / \rho_F}{10.4\rho_L / \rho_F + F_b} \right] (EI - EE - CI + CI_b (G/G_0)^2) \\ \frac{dL}{dt} &= \left[ \frac{10.4 / \rho_F}{10.4\rho_L / \rho_F + F_b} \right] (EI - EE - CI + CI_b (G/G_0)^2) \\ \frac{dAT}{dt} &= (\beta_{AT} \Delta EI - AT) / \tau_{AT} \end{aligned}$$

152 where Cl<sub>b</sub> is the carbohydrate energy intake (CI) at energy balance; G<sub>0</sub> is the initial body glycogen amount;  
153  $\rho_G$  is the glycogen energy density (4.2 kcal/g); [Na] is the extracellular Na concentration (3.22 mg/ml);  
154  $\xi_{Na}$  is a ECF Na excretion constant (3 000 mg/[ml x day]);  $\xi_{CI}$  CI dependent Na excretion constant (4 000  
155 mg/[ml x day]);  $\rho_L$  is the energy density of lean tissue (1.815kcal/g);  $\tau_{AT}$  is the AT time constant (14 days);  
156 and  $\beta_{AT} = 0.14$  is the AT coefficient.

157 EE is defined as

$$158 \quad EE = \frac{\left[ K + \gamma_{F_b} F_b + \gamma_L L + [(1 - \beta_{TEF}) \cdot PAL - 1] RMR + \beta_{TEF} \Delta EI + AT \right. \\ \left. + (EI - CI + CI_b (G/G_0)^2) \left( \frac{10.4\eta_L / \rho_F}{10.4\rho_L / \rho_F + F_b} + \frac{\eta_{F_b} F_b / \rho_F}{10.4\rho_L / \rho_F + F_b} \right) \right]}{1 + \frac{10.4\eta_L / \rho_F}{10.4\rho_L / \rho_F + F_b} + \frac{\eta_{F_b} F_b / \rho_F}{10.4\rho_L / \rho_F + F_b}}$$

159 where K is arbitrary constant determined to achieved energy balance at BW<sub>0</sub>;  $\gamma_{F_b} = 3.1 \text{ kcal} / [\text{kg} \cdot \text{day}]$  is  
160 the specific body fat metabolic rate coefficient;  $\gamma_L = 21.99 \text{ kcal} / [\text{kg} \cdot \text{day}]$  is the specific lean tissue  
161 metabolic rate coefficient;  $\beta_{TEF} = 0.1$  is the thermic effect of feeding coefficient;  
162  $RMR = 19.7(BW - F_b) + 413$  is Mifflin *et al.*<sup>15</sup> resting metabolic rate formula;  $\eta_L = 229.446 \text{ kcal} / \text{kg}$  is the  
163 lean tissue synthesis efficacy; and  $\eta_{F_b} = 179.254 \text{ kcal} / \text{kg}$  is the fat tissue synthesis efficacy.

164 Body weight at time t is obtained by the following sum

165  $BW(t) = F_b(t) + L(t) + 1.0027G(t) + ECF(t)$

166 To simulate pancreatic  $\beta$ -cell death, we set  $CI = 0$ , as majority of the ingested glucose is lost through  
167 urination. One of the mechanisms that has evolved to maintain normoglycemia is the re-uptake (by  
168 sodium-glucose transporters; SGLT) of glucose that is excreted in the urine but in untreated type I diabetes  
169 very high blood glucose concentration clearly over-power these SGLTs.

170 The system of differential equations was solved using the fourth order Runge-Kutta method with a time  
171 step of 1 day.

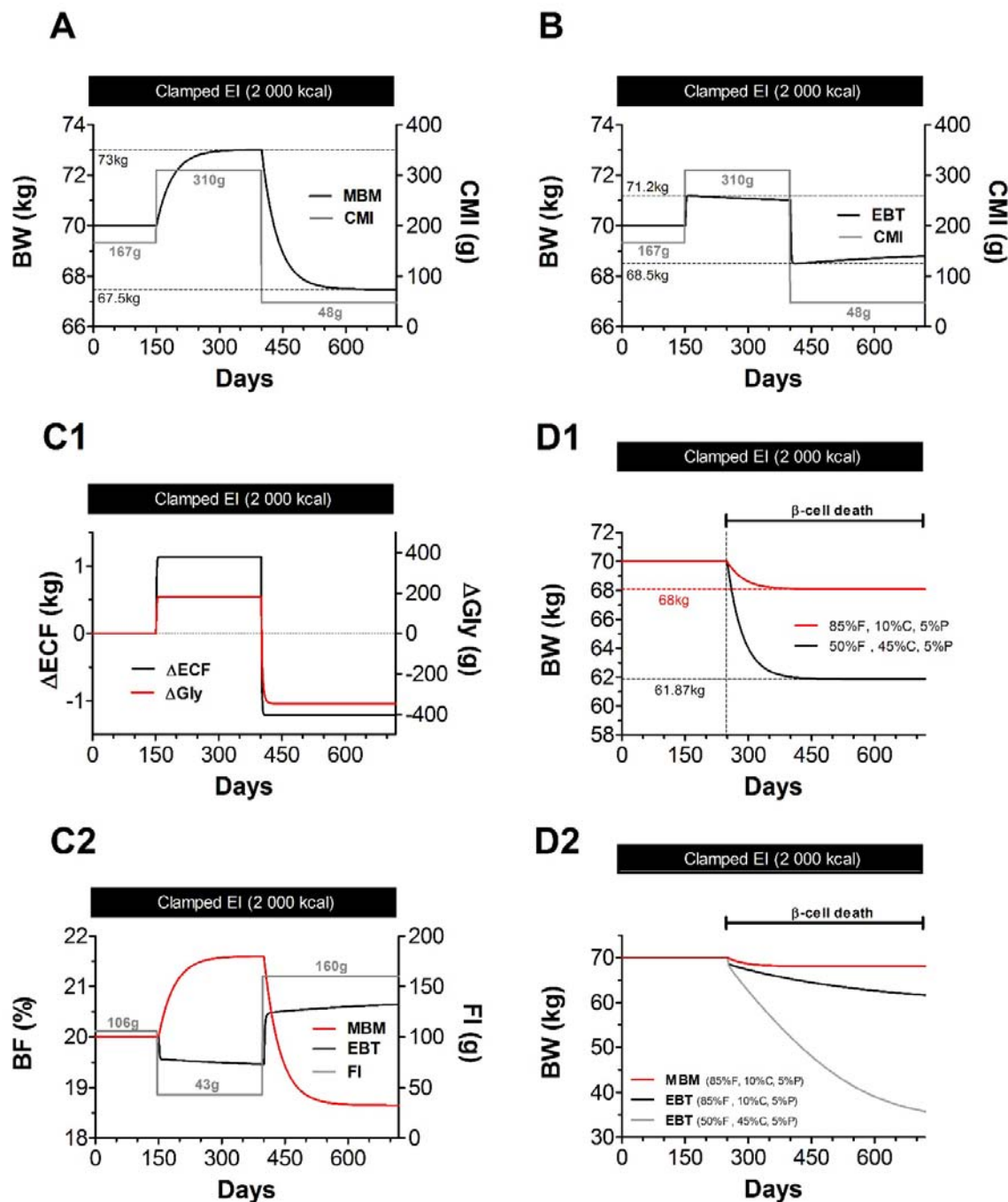
172

## 173 **Results**

174 The Figure 2 A uses the MBM to simulate the effect of exchanging a high-carbohydrate diet (HCD) for an  
175 isocaloric very-low-carbohydrate diet (VLCD) in a weight-stable 70kg individual. Under the HCD (day 150-  
176 400), body weight gradually increases to 73kg. However, after beginning the isocaloric VLCD (day 400),  
177 body weight decreases towards a steady value of 67.5kg. Figure 2 B repeats the simulation in panel A, but  
178 with Hall *et al.*<sup>14</sup> model of the EBT. The latter indicates, in general, that isocaloric perturbations only elicit  
179 non-significant alterations in body weight that are mostly a consequence of changes in extracellular fluid  
180 (ECF) and stored glycogen (Gly, Figure 2 C1). In such cases, therefore, changes in body composition are  
181 expected to be nearly undetectable (Figure 2 C2). For further details, see the figure legend.

182 An interesting aspect of the MBM is its capacity to account for the degree of weight loss observed at the  
183 onset of type 1 diabetes (T1D). Before the discovery of insulin, a common dietary treatment of T1D was a  
184 very-low-carbohydrate diet/high-fat diet which slowed down and reduced the excessive weight loss while  
185 alleviating the classical symptoms of polyuria, polyphagia and polydipsia [16]. The Figure 2 D1 shows that  
186 the MBM explains the weight loss associated with the onset of T1D and also makes predictions consistent  
187 with the diabetes treatment during the pre-insulin era. The EBT, however, predicts a substantial weight loss  
188 at T1D onset even if the pre-onset diet is a VLCD (Figure 2 D2). For further details, see the figure legend.

189



190

191

192 **FIGURE 2 Predictions under isocaloric perturbations: EBT vs. MBM**

193 **A.** MBM response to exchanging a HCD for an isocaloric VLCD. BW is stable at 70 kg with EI = 2 000 kcal  
 194 during 150 days (control: 50% F, 35% C, 15% P). The daily carbohydrate mass intake (CMI) is 167g. At day  
 195 150 EI = 2 000 kcal but CMI has increased by 143g as the control diet is exchange for a HCD (20% F, 65% C,  
 196 15% P). On day 400, EI = 2 000 kcal but the diet is exchange again for a VLCD (75% F, 10% C, 15% P). Here  
 197 CMI decreases by 262g. Model parameters are as follows:  $BW_0 = 70\text{kg}$ ,  $FM_0 = 14\text{kg}$ ,  $nEPM = 1.5\text{kg}$ ,  $F_{\text{loss}} =$



198 0.034942857, PAL = 1.5,  $VO_2 = 4.464 \text{ L}/[\text{kg} \times \text{day}]$ . **B.** EBT response to the same perturbations as in panel A.  
199 Initial conditions are as follows:  $K = 547.2925$ ,  $BW(0) = 70\text{kg}$ ,  $F_b(0) = 14\text{kg}$ ,  $L(0) = 36.012\text{kg}$ ,  $ECF(0)=19.486\text{kg}$ ,  
200  $AT(0) = 0$ ,  $G(0) = 0.5\text{kg}$ , PAL =1.5 **C1.** According to the EBT, majority of the weight change under an isocaloric  
201 perturbations result from changes in extracellular fluid (ECF) and stored glycogen (Gly) that stabilize within  
202 few days. **C2.** MBM predicts that BF evolves in parallel to the weight change direction. In contrast, the EBT  
203 predicts that, under isocaloric perturbations, BF evolves according to the amount of fat intake (FI). **D1.**  
204 MBM predicts that the weight loss magnitude evoked by pancreatic  $\beta$ -cell death is dependent on the diet's  
205 macronutrient composition. To simulate pancreatic  $\beta$ -cell death, we set  $CI = 0$ , as majority of the ingested  
206 glucose is lost through urination. One of the mechanisms that has evolved to maintain normoglycemia is  
207 the re-uptake (by sodium-glucose transporters [SGLTs]) of glucose that is excreted in the urine but in  
208 untreated type I diabetes very high blood glucose concentration clearly over-power these SGLTs. Model  
209 parameters are as in A. **D2.** The EBT predicts that changes in the diet's macronutrient distribution will elicit  
210 measurable changes in the rate and magnitude of weight loss after  $\beta$ -cell death but not as potent as those  
211 predicted by the MBM. Initial conditions are as in B.

212 Kong *et al.*<sup>3</sup> have recently published a well-controlled feeding study that allows to test the validity of the  
213 predictions made by the MBM and EBT. Their young female subjects (age:  $21 \pm$  standard deviation [SD]: 3.7  
214 years, weight:  $65.5 \pm$  SD: 7.7 kg, body mass index:  $24.9 \pm$  SD: 2.7  $\text{kg}/\text{m}^2$ ) were weight-stable for 4 weeks  
215 under a normal diet (ND:  $1967\text{kcal} \pm$  SD: 362kcal ; F 44%  $\pm$  SD: 7.6%, C 39.6%  $\pm$  SD: 5.8%, 15.4% $\pm$  SD:  
216 3.3% ) and then switched to an isocaloric ketogenic diet (KD  $1817\text{kcal} \pm$  SD: 285kcal; F 69%  $\pm$  SD: 5.4%, C  
217 9.2%  $\pm$  SD: 4.8%, 21.9% $\pm$  SD: 3.4%) for another 4 weeks leading to a substantially reduced body weight ( -  
218 2.9 kg) and body fat percentage ( -2.0%). According to the authors, "[t]he findings of this study do not  
219 seem to support the idea that the weight-loss effect of KD is due to reduced appetite [and thus reduced  
220 energy intake]."

221  
222 Figure 3 A1, A2 and A3 simulate Kong *et al.*<sup>3</sup> data using the Hall *et al.*<sup>14</sup> model of the EBT. Here the KD  
223 decreases body weight by 1.71Kg (Figure 3 A1) which is mainly a result of changes in ECF and stored  
224 glycogen (Figure 3 A2). In such case, the EBT predicts a slight increase in body fat percentage (Figure 3 A2).  
225 Figure 3 B1 simulates Kong *et al.*<sup>3</sup> data using the MBM. As illustrated, this model predicts a much larger  
226 drop in body weight (-3.05kg) under KD than the EBT. Contrary to the EBT, however, the MBM predicts a  
227 drop in body fat percentage of about 1.6%. This signifies, therefore, that at the MBM leads to more  
228 accurate predictions in than those made by the EBT.

229  
230  
231

232

233

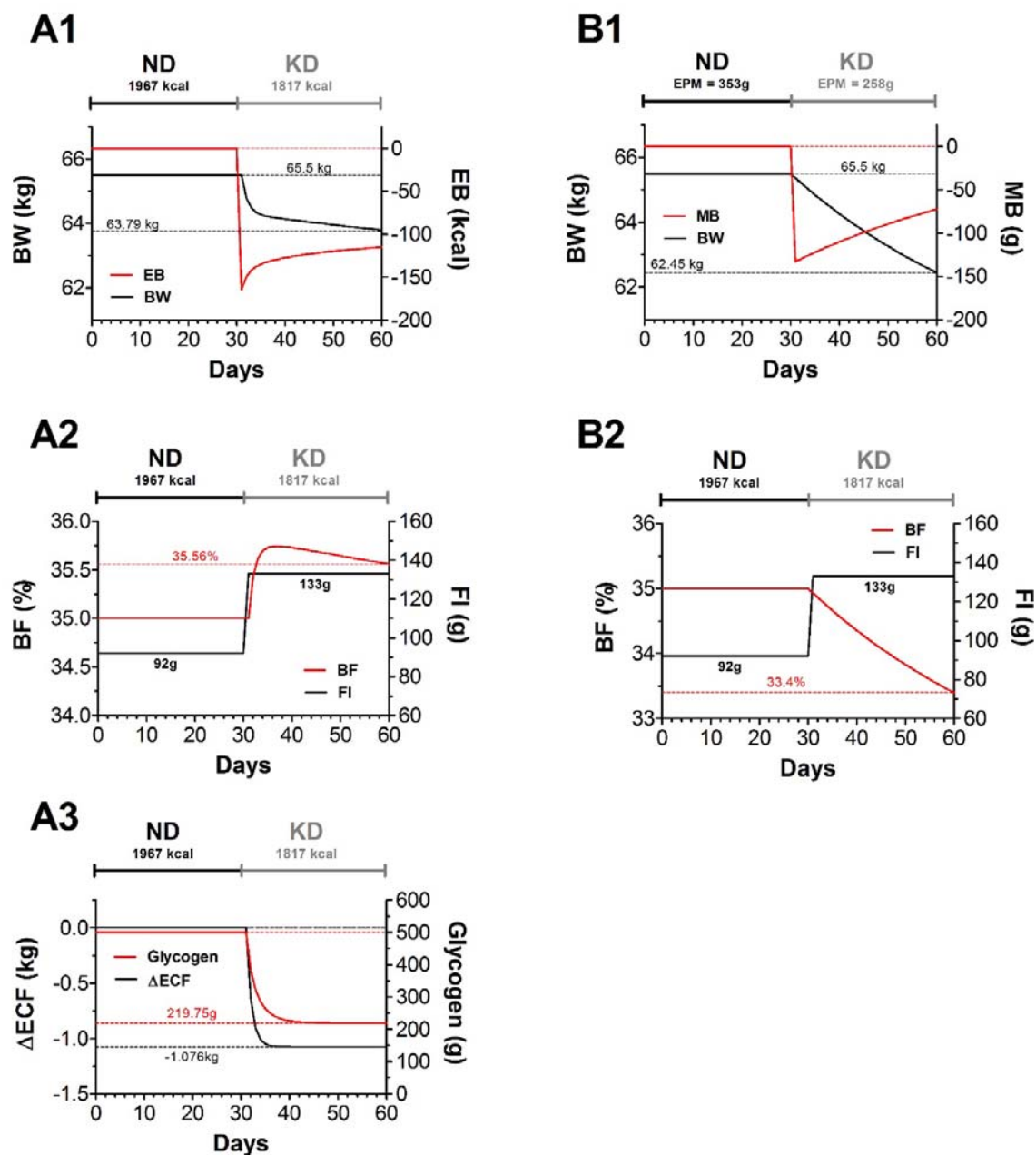
234

235

236

237

238



239

240 **FIGURE 3. The simulation of Kong *et al.* data: EBT vs. MBM**

241 **A1.** The figure utilizes the EBT to simulate Kong *et al.*<sup>3</sup> data. During the ND period (days 0-30) energy  
 242 balance (EB, red curve) is zero. After day 30 EB becomes negative under the KD resulting in a cumulative  
 243 weight loss of 1.71kg at day 60. Initial conditions are as follows:  $K = 892.7146$ ,  $BW(0) = 65.5\text{kg}$ ,  $F_b(0) =$   
 244  $22.925\text{kg}$ ,  $L(0) = 25.698\text{kg}$ ,  $ECF(0) = 16.375\text{kg}$ ,  $AT(0) = 0$ ,  $G(0) = 0.5\text{kg}$ ,  $PAL = 1.5$ . **A2.** The EBT predicts that –  
 245 although the KD results in *weight loss* – BF increases since FI has been augmented by 41g. **A3.** During the  
 246 ND total glycogen is 500g but after the KD this amount has dropped by 280.25g. ECF has also decreased by  
 247 1.076kg. These quantities add to  $1.35525\text{kg} = 0.28025\text{kg} + 1.076\text{kg}$ . Consequently, of the 1.71kg weight loss  
 248 in A1,  $0.35475\text{kg} = 1.71\text{kg} - 1.35525\text{kg}$  are from other mass sources ( $0.2436\text{ kg fat mass} + 0.11115\text{ kg fat-}$   
 249  $\text{free mass} = 0.35475\text{kg}$ ). According to the EBT, fat mass has in fact decreased; however, only by slight

250 amount since FI has been augmented during the KD. Consequently, as the decline in fat-free mass is much  
251 larger than that of fat mass, BF increases as in A2. **B1.** The figure utilizes the MBM to simulate Kong *et al.*<sup>3</sup>  
252 data. During the ND period (days 0-30) mass balance (MB, red curve) is zero. After day 30 MB becomes  
253 negative under the KD resulting in a cumulative weight loss of 3.05kg at day 60. Model parameters are as  
254 follows:  $BW_0 = 65.5\text{kg}$ ,  $FM_0 = 22.925\text{kg}$ ,  $nEPM_{ND} = 1\text{kg}$ ,  $nEPM_{KD} = 0.96\text{kg}$ ,  $F_{loss} = 0.029078$ ,  $PAL = 1.5$ ,  $VO_2 =$   
255  $4.32\text{ L}/[\text{kg} \times \text{day}]$  **B2.** According to the MBM, of the 3.05kg of weight loss 2.07kg came from fat and 0.98kg  
256 from fat-free mass. Even though FI has increased the decline in fat-free mass is much smaller than that of  
257 fat mass and thus BF decreases as shown.

258

## 259 Discussion

260 According to the EBT, at energy balance, changes in macronutrient composition elicit non-substantial  
261 changes in body weight. These alterations are assumed to be secondary to changes in ECF and glycogen  
262 that follow from adjustments in the diet's sodium content and carbohydrate intake.<sup>4, 7</sup> The EBT also claims  
263 that body composition alterations, under these circumstances, are expected to be small but to occur in  
264 parallel to the amount of dietary fat intake (see Figure 2 C2). Consequently, from the EBT perspective, the  
265 MBM simulations (see Figure 2 A and C2) are unrealistic, as body weight and body fat alterations are much  
266 greater than those predicted when energy balance is assumed to be present. If such an argument is  
267 definitive, then the accuracy of EBT predictions should always exceed those made by the MBM. Figure 3  
268 illustrates, however, that this is *clearly* not the case.

269 Moreover, the EBT implicitly asserts that blood leptin concentration should be minimally affected when  
270 arbitrary subject switches from a weight-maintenance standard diet to an isocaloric ketogenic diet since, as  
271 argued by this theory, under such conditions fat mass decline is insignificant (see Figure 3 A2). In contrast,  
272 the MBM predicts a substantial drop in leptin levels since this model indicates that this type of isocaloric  
273 exchange results in a substantial drop in fat mass. Indeed, a recent well-controlled feeding trial by Kong *et*  
274 *al.*<sup>3</sup> showed that the interchange of a weight-preserving normal diet for an isocaloric ketogenic diet evokes  
275 a significant reduction in leptin levels.

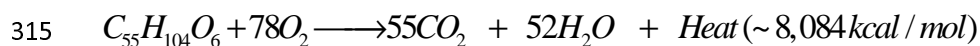
276 In addition, the MBM simulations on pancreatic  $\beta$ -cell death are consistent with a review of case histories  
277 from the pre-insulin era illustrating that VLCDs could result in some weight gain after the onset of T1D.<sup>16</sup>  
278 Elliot Proctor Joslin, for example, was the first United States medical doctor that specialized in diabetes  
279 treatment during this era. Although anecdotal, one of his diabetic patients, Mary H., reportedly gained  
280 nearly 3kg of body weight while consuming a diet containing solely protein and fat. The EBT simulations, in  
281 contrast, do not predict such therapeutic effect.

282 Numerous examples in the weight management literature show that the amount of weight loss is far  
283 greater in low-carbohydrate diets (LCDs) compared to isocaloric low-fat diets (LFDs).<sup>7, 8, 9, 10, 11, 12</sup> According  
284 to the EBT, this can only occur if the energy expenditure under LCDs is larger than that in LFDs. However, in  
285 many of these dietary interventions non-significant differences are found between the energy expenditures  
286 of these diets.<sup>7, 12, 17, 18, 19</sup> Researchers that subscribe to the EBT, therefore, argue that in such cases the  
287 most likely explanation of the observed superior weight loss is the result of energy intake underreporting  
288 by low-fat dieters.<sup>12</sup> This claim has encountered minimal opposition since it is widely accepted that the  
289 majority of the energy intake recording devices (e.g., self-reported food records) are biased toward  
290 underestimation.<sup>5, 6</sup> (**For further discussion, see Supplementary File 1**). Two alternative models, however,  
291 may explain the apparent weight loss advantage of LCDs over isocaloric LFDs: the carbohydrate-insulin  
292 model (CIM) of obesity<sup>20</sup> and the MBM<sup>4</sup> (**See also Supplementary File 3**).

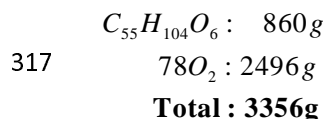
293 The CIM postulates that high-carbohydrate intake elevates insulin levels leading to the activation of  
294 complex neuroendocrine responses that drive body fat deposition, increase appetite and decrease energy  
295 expenditure<sup>17</sup>; which, according to the EBT, explains the persistent weight gain over time observed in obese  
296 subjects. Conversely, LCDs, by significantly decreasing circulating insulin levels, should increase energy  
297 expenditure by augmenting fat oxidation, which – as argued by CIM advocates – accounts for the greater  
298 and faster weight loss observed in feeding trails of LCDs vs. isocaloric LFDs. The above claims are open to  
299 discussion, however, as evidence shows that obese individuals manifest a highly elevated energy  
300 expenditure relative to normal weight subjects<sup>21</sup>, plus, as already mentioned, the predominant evidence  
301 indicates that no significant energy expenditures differences exist between diets.<sup>7, 12, 17, 18, 19</sup> A recent meta-  
302 analysis by Ludwig *et al.*<sup>22</sup> suggests that an adaptation period of at least 14 days may be required in order  
303 to LCDs to elevate energy expenditure. If this is the case, then one would expect a slow decay of the  
304 respiratory quotient (RQ) toward 0.71 since this would reflect the gradual metabolic dependence on fat as  
305 the main energy fuel. In ketogenic diets, however, the RQ reaches a steady state within the first week and  
306 continuous to be stable for at least three more weeks.<sup>17</sup> Taken together, it seems that the LCD-enhanced  
307 weight loss is unlikely to be a consequence of an augmented energy expenditure as proposed by the CIM.

308 In contrast, the MBM describes body weight fluctuations as a **mass imbalance problem**. Specifically, when  
309 macronutrient mass intake exceeds the excretion of macronutrient oxidation products body weight  
310 increases and *vice versa*. Body weight stability is, hence, expected as over time the average consumed mass  
311 equals the average eliminated mass. Our model arrives from the following long-standing observations:

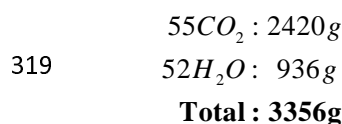
312 **1. The physiological/biochemical activity that decreases body weight is the excretion of oxidation**  
313 **products and not energy expenditure.**<sup>23</sup> This is exemplified in the oxidation of a “general” triglyceride  
314 molecule:



316 The mass entering this reaction is (in g/mol)



318 whereas mass exiting the reaction is only present in the reaction products



320 and not in the dissipated heat (i.e., Calories). Therefore, body mass decreases as the body excretes or  
321 eliminates oxidation products but not as consequence of the heat content in the energy expenditure.

322 **2. The food property that has the capacity to increases body weight is its macronutrient mass and not its**  
323 **potential nutritional energy.** For instance, the absorption and retention within body cells of 1 gram of fat,  
324 carbohydrate or protein will increase body mass by exactly 1 gram. This observation is independent of the  
325 potential caloric content ascribe to the macronutrient; according to the Law of Conservation of Mass, the  
326 absorbed macronutrient mass cannot be destroyed and, thus, it will contribute to total body mass as long  
327 as it remains within the body. Such contribution ends, however, when the macronutrient is eliminated from  
328 the body either as products of metabolic oxidation (e.g., H<sub>2</sub>O and CO<sub>2</sub>) or in other forms (e.g., shedding of  
329 dead skin cells fill with keratin protein).

330 **3. From points 1 and 2 it follows that body weight fluctuations can be described by the difference**  
331 **between daily mass intake and daily mass excretion.** Although at first sight this statement may seem not  
332 to have far-reaching consequences, Arencibia-Albite<sup>4</sup> has shown that when translated into mathematical  
333 form it fits body weight and fat mass data from isocaloric diet trails of LCDs vs. LFDs, and also results in  
334 predictions that are not evident from the qualitative inspection of points 1, 2 and 3. This work further  
335 substantiates such predictions and demonstrates that MBM-based simulations result in highly realistic  
336 forecasts in settings where the EBT-based simulations collapse.

337 The energy picture of body weight dynamics explains body fat fluctuations as the balance between fat  
338 intake and fat oxidation. The EBT cannot foresee, therefore, that a LCD may lead to more fat loss than an  
339 isocaloric LFD since the fat balance in the latter appears to be more negative than in the former.<sup>7</sup> A  
340 multitude of feeding studies<sup>3, 9,11,12</sup> suggest, however, this is not the case as the contrary is a more frequent  
341 observation. In the mass picture, in contrast, body fat fluctuations are not only dependent on fat intake and  
342 oxidation but other routes contribute as well to fat loss. In LCDs, for instance, the elevated fatty acid  
343 oxidation leads, in hepatocytes, to high cytoplasmic HMG-CoA levels which are rapidly reduced to  
344 mevalonic acid for cholesterol production. The characteristic excess cholesterol of LCDs<sup>24</sup>, in turn, is then  
345 eliminated in in feces as bile acids. Additionally, in LCDs, carbon atoms from fatty acid breakdown circulate  
346 in the blood stream as high acetoacetate levels which can exit the body either in the urine or through  
347 breathing when spontaneously decarboxylated to acetone. The afore mentioned processes may thus be  
348 responsible for the greater fat loss in LCDs vs. isocaloric LFD even if fat oxidation is greater in LFDs as  
349 suggested by short-term (e.g., 6 days) studies.<sup>7</sup> Consequently, in the light of this theoretical study, the  
350 above argument suggests that the variable that better accounts for body fat fluctuations is mass and not  
351 energy.

352 Some readers may wonder why we completely ignored almost any *epidemiological* data as it relates to  
353 obesity and energy intake and – thus –to the debate of relative merits the EBT vs. the MBM. Memory-based  
354 nutritional epidemiology (MBNE) supposedly examines the role of nutrition in the etiology of diseases,  
355 including obesity. Although there are certain strong defenders of this dubious branch of epidemiology (i.e.,  
356 nutritional epidemiology people at Harvard School of Public Health), we tend to agree with Ioannidis that  
357 this branch needs “radical reform”.<sup>25</sup> In fact, almost all central assumptions coming from the MBNE field  
358 are have been refuted in rigorously controlled feeding trials.

## 359 **Conclusions**

360 Implicit in the EBT discourse is that body fat accumulates only if fat intake exceeds fat oxidation, even  
361 under dietary energy restriction, which explains why this theory argues in favor of LFDs as the optimal fat  
362 loss dietary treatment.<sup>7</sup> Such point of view is clearly captured in Figure 2 C2 and Figure 3 A2; however,  
363 numerous examples in experimental literature indicates the opposite. The MBM, on the other hand, is  
364 highly consistent with these data suggesting that the relevant variable for weight fluctuation is mass and  
365 not energy. Our model by its *razor-sharp* yet *simple* logic, seems to be perfectly able to account for the  
366 deferential weight loss among isocaloric diets. The obesity community is trying to explain such  
367 “mysterious” findings by invoking complex signaling pathways that completely ignore the *fundamental rule*  
368 in science: the Occam's razor (*novacula Occami*), i.e., the simplest explanation is usually the right one. More  
369 specifically, “entities should not be multiplied without necessity”, a notion attributed to English Franciscan  
370 friar William of Ockham. Nevertheless, we are certainly not claiming that our model is definitive (or  
371 downplaying the emergent and promising therapeutic value of LCDs), but rather to stimulate researchers  
372 around the world to acknowledge that the widely accepted EBT is incorrect.

373 The daily intake of macronutrient mass is, obviously, influenced by the ever-present interplay between the  
374 environment and genes; thus, it is important to realize that the MBM makes no claims regarding the  
375 *behavioral* aspects of obesity. Certainly, food processing, distribution, marketing, education, etc. plays a big  
376 role in current obesity epidemics.

377 “We make [biological] modeling because it helps us in our attempted understanding of the intricate system.  
378 It breaks down the set of objects (e.g., macronutrients) and phenomenon too complex [e.g., obesity] to be  
379 grasped in their entities into smaller realms that can be dealt one by one [as was done here by the MBM  
380 simulations]. There is nothing objective “true” about such models; the only proper criterion of value is their  
381 usefulness.”

382 —Isaac Asimow, *The Human Body: It's Structure and Operation* (1963); cited in *Engineering Physiology: Bases of Human Factors Engineering/Ergonomics*, Springer Nature, 2020.

384

### 385 **Authors contribution**

386 Study concept and designing: Manninen, Arencibia-Albite

387 Acquisition of data: Manninen, Arencibia-Albite

388 Statistical analysis and interpretation of data: Manninen, Arencibia-Albite

389 Drafting the manuscript: Manninen, Arencibia-Albite

390 Critical revision of the manuscript for important intellectual content: Manninen, Arencibia-Albite

391 Administrative, technical or material support: Manninen, Arencibia-Albite.

392 Study supervision: N/A.

393

### 394 **Acknowledgements**

395

396 This has been a time-consuming and cliff-hanging research project with both brains working in overdrive  
397 almost around a clock. Fortunately, we are now about to close the 1st chapter of our MBM research  
398 project.

399 We would like to thank our families for support and care; our numerous colleagues for stimulating  
400 discussions; and *medRxiv* for providing excellent customer service.

401

### 402 **Funding sources**

403 This research did not receive any specific grant from funding agencies in the public, commercial, or not-for-  
404 profit sectors.

405

### 406 **Declaration of competing interests**

407 The authors declare that they have no competing interests.

408

## 409 **References**

- 410 1. Hall K.D. Heymsfield S.B. Kemnitz J.W. Klein S. Schoeller D.A. Speakman J.R. Energy balance and its  
411 components: implications for body weight regulation. *Am J Clin Nutr.* 2012; 95: 989-994.
- 412 2. Wells J.C.K. Siervo M. Obesity and energy balance: is the tail wagging the dog? *Eur J Clin Nutr.* 2011; 65:  
413 1173–1189.
- 414 3. Kong Z, Sun S, Shi Q, Zhang H, Tong TK, Nie J. Short-Term Ketogenic Diet Improves Abdominal Obesity in  
415 Overweight/Obese Chinese Young Females. *Front Physiol.* 2020; 11:856.
- 416 4. Arencibia-Albite F. Serious analytical inconsistencies challenge the validity of the energy balance theory.  
417 *Heliyon.* 2020; 6(7):e04204.
- 418 5. Winkler JT. The fundamental flaw in obesity research. *Obesity Reviews.* 2005; 6:199–202.
- 419 6. Dhurandhar NV, Schoeller DA, Brown AW, Heymsfield SB, Thomas D, Sørensen TIA, et al. Energy balance  
420 measurement: when something is not better than nothing. *International Journal of Obesity.* 2014; 39:  
421 1109–1113.
- 422 7. Hall KD, Bemis T, Brychta TR, Chen KY, Courville A, Crayner EJ, et al. Calorie for Calorie, Dietary Fat  
423 Restriction Results in More Body Fat Loss than Carbohydrate Restriction in People with Obesity. *Cell*  
424 *Metabolism.* 2015; 22: 531.
- 425 8. Lean M, Han T, Prvan T, Richmond P, Avenell A. Weight loss with high and low carbohydrate 1200 kcal  
426 diets in free living women. *European Journal of Clinical Nutrition.* 1997; 51: 243–248.
- 427 9. Bazzano LA, Tian H, Reynolds K, Yao L, Bunol C, Liu Y, et al. Effects of Low-Carbohydrate and Low-Fat  
428 Diets: a randomized trial. *Annals of Internal Medicine.* 2014; 161: 309.
- 429 10. Samaha FF, Iqbal N, Seshadri P, Chicano KL, Daily DA, McGrory J, et al.  
430 A Low-Carbohydrate as Compared with a Low-Fat Diet in Severe Obesity  
431 *New England Journal of Medicine.* 2003; 348: 2074–2081.
- 432 11. Brehm BJ, Seeley RJ, Daniels SR, D'Alessio DA. A Randomized Trial Comparing a Very Low Carbohydrate  
433 Diet and a Calorie-Restricted Low Fat Diet on Body Weight and Cardiovascular Risk Factors in Healthy  
434 Women. *The Journal of Clinical Endocrinology & Metabolism.* 2003; 88: 1617–1623.
- 435 12. Brehm BJ, Spang SE, Lattin BL, Seeley RJ, Daniels RS, D'Alessio DA. The Role of Energy Expenditure in the  
436 Differential Weight Loss in Obese Women on Low-Fat and Low-Carbohydrate Diets. *The Journal of Clinical*  
437 *Endocrinology & Metabolism.* 2005; 90: 1475–1482.
- 438 13. WEIR JB. New methods for calculating metabolic rate with special reference to protein metabolism. *J*  
439 *Physiol.* 1949;109(1-2):1-9.
- 440 14. Hall KD, Sacks G, Chandramohan D, Chow CC, Wang YC, Gortmaker SL, Swinburn BA. Quantification of  
441 the effect of energy imbalance on bodyweight. *Lancet.* 2011;378(9793):826-37.

- 442 15. Mifflin MD, St Jeor ST, Hill LA, Scott BJ, Daugherty SA, Koh YO. A new predictive equation for resting  
443 energy expenditure in healthy individuals. *Am J Clin Nutr.* 1990; 51(2):241-7.
- 444 16. Westman E.C. Yancy W.S. Humphreys M. Dietary treatment of diabetes mellitus in the pre-insulin era  
445 (1914-1922). *Perspect Biol Med.* 2006; **49**: 77-83.
- 446 17. Hall KD, Chen KY, Guo J, Lam YY, Leibel RL, Mayer LE, Reitman ML, Rosenbaum M, Smith SR, Walsh BT,  
447 Ravussin E. Energy expenditure and body composition changes after an isocaloric ketogenic diet in  
448 overweight and obese men. *Am J Clin Nutr.* 2016;104(2):324-33.
- 449 18. Hall KD, Guo J. Obesity Energetics: Body Weight Regulation and the Effects of Diet Composition.  
450 *Gastroenterology.* 2017; 152(7):1718-1727.e3.
- 451 19. Hall KD, Guo J, Speakman JR. Do low-carbohydrate diets increase energy expenditure? *Int J Obes (Lond).*  
452 2019; 43(12):2350-2354.
- 453 20. Ludwig DS, Ebbeling CB. The Carbohydrate-Insulin Model of Obesity: Beyond "Calories In, Calories Out".  
454 *JAMA Intern Med.* 2018; 178(8):1098-1103.
- 455 21. Das SK, Saltzman E, McCrory MA, Hsu LK, Shikora SA, Dolnikowski G, Kehayias JJ, Roberts SB. Energy  
456 expenditure is very high in extremely obese women. *J Nutr.* 2004;134(6):1412-6.
- 457 22. Ludwig DS, Dickinson SL, Henschel B, Ebbeling CB, Allison DB. Do Lower-Carbohydrate Diets Increase  
458 Total Energy Expenditure? An Updated and Reanalyzed Meta-Analysis of 29 Controlled-Feeding Studies. *J*  
459 *Nutr.* 2020:nxaa350.
- 460 23. Meerman R, Brown AJ. When somebody loses weight, where does the fat go? *BMJ.* 2014;349:g7257.
- 461 24. Retterstøl K, Svendsen M, Narverud I, Holven KB. Effect of low carbohydrate high fat diet on LDL  
462 cholesterol and gene expression in normal-weight, young adults: A randomized controlled study.  
463 *Atherosclerosis.* 2018; 279:52-61.
- 464 25. Ioannidis JPA. The Challenge of Reforming Nutritional Epidemiologic Research. *JAMA.* 2018 Sep  
465 11;320(10):969-970. doi: 10.1001/jama.2018.11025.
- 466
- 467
- 468
- 469
- 470
- 471
- 472
- 473
- 474



475

476

477

478

479

480

481

482

483

484 **“Macronutrient mass intake explains differential weight and fat loss in**  
485 **isocaloric diets”**

## 486 **SUPPLEMENTARY FILE 1**

487 **Additional discussion regarding free-living human feeding studies with**  
488 **special reference to Kong *et al.***

489

490 As recently discussed by Hall [1], feeding trials have their own challenges, including – but certainly not  
491 limited to – the impracticality and difficulty of randomizing large numbers of free-living subjects to eat  
492 different diets for a long period time while ensuring very-high levels of adherence throughout. Although so-  
493 called domiciled feeding studies [1] can certainly provide important insights, their “artificial” environment  
494 may seriously limit generalizability and applications to free-living individuals, not to mention the fact that  
495 this type of studies have become prohibitively expensive to conduct in the United States since the National  
496 Institutes of Health (NIH) ceased directly funding Clinical Research Centers [1]. Consequently, well-  
497 controlled randomized free-living feeding studies remain the gold standard when it comes to proving  
498 causality in the areas of nutrition and metabolism.

499 There are always potential problems with any kind of dietary records; although we know that these records  
500 have relatively high error rates, they can be very meaningful – in terms of causality – if 1) the differences in  
501 the study arms are large enough; and 2) there are indicators of very good adherence (e.g., the presence of  
502 ketone bodies). *A Very-low-carbohydrate diet always win in a well-controlled face-off with an isocaloric*  
503 *high-carbohydrate diet (see the Supplementary File 1 Figure 1). If such a response is not observed, then it is*  
504 *simply not a well-controlled study, as alternative results would indicate a violation of the Law of*  
505 *Conversation of Mass (see Supplementary File 2).*

506 Researchers guided by the erroneous EBT, however, tend to automatically assume that the subjects on the  
507 very-low-carb arm must have overreported what they actually ate, or the people of the high-carb arm must  
508 have underreported what they ate, or both. *How likely is that the very-low-carb arms, time after time,*

509 *substantially overreport dietary records, whereas the high-carb arms consistently underreport dietary*  
510 *records?* [2]

511 To test the predictive power of both the MBM and the EBT, we decided to utilize the recent free-living  
512 feeding data by Kong *et al.* (see **Figures A1, A2, A3, B1, and B2 in the main body of the manuscript**). Their  
513 young female subjects were weight-stable for 4 weeks under a “normal diet” and then switched to an  
514 isocaloric ketogenic diet for another 4 weeks leading to a substantially reduced body weight (– 2.9 kg) and  
515 body fat percentage (– 2.0%), consistent with the MBM.

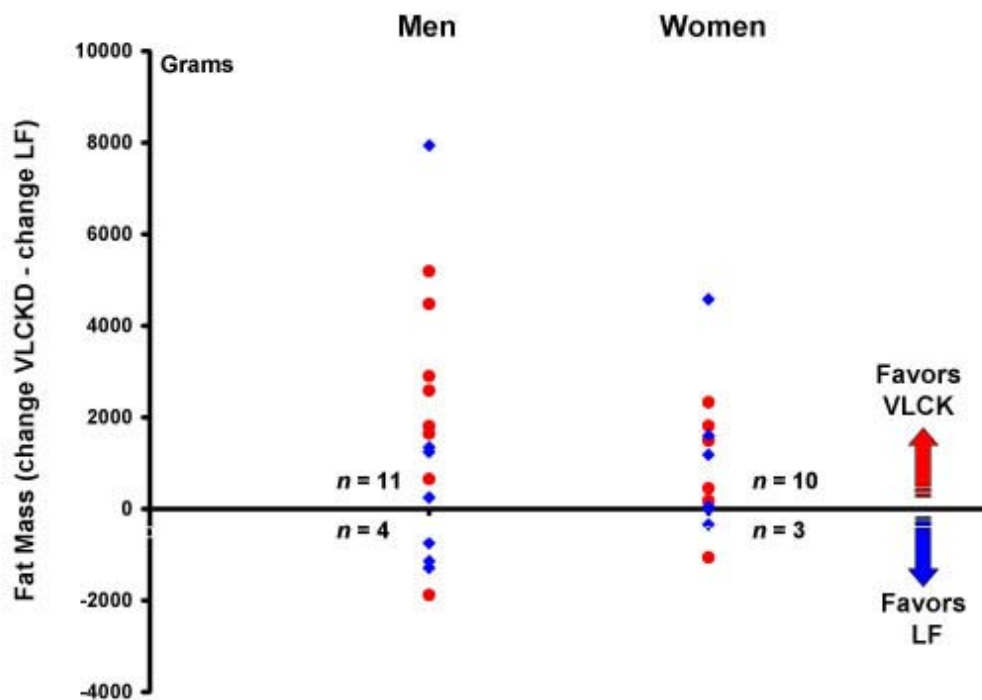
516 To assure subjects’ adherence to ketogenic diet (KD), Kong *et al.* required that:

- 517 • The subjects measure urinary ketones every day (early morning or after dinner) and record 3-day  
518 food diaries (2 weekdays and 1 weekend day) during the experimental period.
- 519 • 3-day food diaries were kept by all subjects for 8 weeks.
- 520 • All subjects were given in advance “thorough instructions” on how to estimate portion sizes and  
521 record food/beverages intake on food composition tables.
- 522 • Subjects were asked to report to the laboratory every week to assess changes in body weight and  
523 hand in the logbook with dietary records.
- 524 • Energy and macronutrient distribution were calculated by the same dietician using the nutrition  
525 analysis and management system; diet compliance was evaluated based on the results of the  
526 urinary ketones and food diaries, and subjects received follow-up dietary advice and counseling  
527 individually from the dietician.

528 *In summary, we believe it is safe to conclude that the energy intake values in a report by Kong et al. are*  
529 *about as reliable as it gets.* Of course, one can claim – and some certainly do – that such free-living feeding  
530 studies are not well-controlled. If we follow such criteria, how many “well-controlled” studies we have on  
531 dietary supplements, or pharmaceuticals, or other interventions lasting longer than few weeks? Zero.

532 Already in 1971, Young *et al.* [3] compared 3 diets that contained the same amount of calories (1800  
533 kcal/d) and protein (115g/d) but that differed in carbohydrate content. After 9 weeks on the 30g, 60g, and  
534 104g carbohydrate diets, weight loss was 16.2kg, 12.8kg, and 11.9kg and fat accounted for 95%, 84%, and  
535 75% of the weight loss, respectively. Thus, the authors concluded, “[w]eight loss, fat loss, and percent of  
536 weight loss as fat appeared to be inversely related to the level of carbohydrate in the isocaloric, isoprotein  
537 diets”, consistent with the MBM (When the energy fraction from dietary fat *increases*, while energy intake  
538 is clamped, mass intake *decreases* due to the significantly higher energy density of fat in contrast to other  
539 substrates). And since these authors were also guided by the erroneous EBT, “[n]o adequate explanation  
540 can be given for weight loss differences.” To our knowledge, no one has found flaws in the trial by Young *et*  
541 *al.* It is worth noting that they utilized underwater weighing (i.e., hydrodensitometry) to determine body  
542 composition, which is more accurate than other widely available methods of body composition testing.  
543 When performed properly, underwater weighing can be accurate to 1.8 to 2.8% compared to the state-of-  
544 the-art methods (e.g., magnetic resonance imaging [MRI], computed tomography [CT]).

545 Modern studies have reported similar findings. For example, a randomized, balanced, free living feeding  
546 study by Volek *et al.* [4] compared the effects of isocaloric and energy-restricted very-low-carbohydrate  
547 (ketogenic) and low-fat diets on weight loss and body composition in overweight and obese men and  
548 women. Despite a significantly greater energy intake with the ketogenic diet than with the low-fat diet  
549 (1855 kcal/d vs. 1562 kcal/d), both the between- and within-group comparisons revealed a quite distinct  
550 weight and fat loss advantage of a ketogenic diet (See **Supplementary File 1 Figure 2**).



551

552

553

554

555

556

557

558

559

560

561

562

563

564

565

566

567

568

569

570

571

572

573

**[FIGURE LEGEND STARTS] Supplementary File 1 Figure 2.** A 2004 well-controlled free-living feeding trial published by Volek *et al.* [4]. This interesting figure illustrates Individual differences between total fat loss on a very low-carbohydrate ketogenic diet (VLCK or VLCKD) minus total fat loss on a low-fat (LF) diet for each person. Positive numbers reflect greater fat loss on the VLCK, whereas negative numbers indicate greater fat loss on the LF diet. Red circles = order of diets VLCK then LF. Blue diamonds = order of diets LF then VLCK. *Like all such studies, the report by Volek et al. demonstrate that there is always “noise” in any complex biological variable such as food ingestion.* Based on this data, it seems that a ketogenic diet (VLCKD or VLCK) is more palatable to men than women, as five men showed a >10 pounds difference in weight loss. What is clear is that every time the human body oxidizes, for example, 1 g of glucose, the heat released by the body (~4kcal) simply can NOT change as a function of one’s biological sex. Thus, the mass balance model (MBM) applies identically to both (or all) biological sexes. There are well-established differences in food intake regulation between biological sexes; for example, food cravings – and especially carbohydrate cravings – may change significantly during the menstrual cycle. However, *the MBM makes no claims regarding the behavioral aspects of obesity whatsoever.* Thus, further discussion of this topic is clearly outside of scope of this paper. Reproduced, with permission, from [4]. LF = low-fat diet. **[FIGURE LEGEND STARTS]**

Since it is widely – and mistakenly – assumed that the fundamental cause of obesity is an energy imbalance between calories consumed and calories expended, it was logical to recommend a low-fat diet for weight management and obesity treatment. However, data from the National Health and Nutrition Examination Surveys (NHANES) indicate a large increase in carbohydrate intake as a major contributor to “caloric excess” (in reality, macronutrient mass excess) in the United States from 1974 to 2000, whereas the

574 absolute amount of fat decreased for men during this period and showed only a slight increase for women  
575 (See Supplementary File 1 Figure 3). And it was during this very period when the incidence of obesity  
576 raised to its current epidemic proportions, consistent with the mass balance model (MBM) predictions.

577 It is perhaps reasonable to look outside controlled feeding trials: where does this passion for drastic  
578 carbohydrate restriction comes from? Over the years, numerous experts have warned that low-  
579 carbohydrate diets are dangerous and ineffective yet a huge number of consumers nowadays believe that  
580 the so-called “official” high-carbohydrate recommendations are – in general – useless in terms of obesity  
581 treatment and weight management. As pointed out by Philip K. Dick, reality is that which, when you stop  
582 believing in it, does not go away.

583 Finally, as discussed out by Ludwig in his well-written letter [6], a recent meta-analysis [7] indicates that  
584 high glycemic index (GI) and high glycemic load (GL) diets increase the risk for type 2 diabetes among high-  
585 risk populations. The authors of the meta-analysis rightly concluded that “the cumulative effect from large  
586 quantities of high GI foods may ... nullify cereal fiber's protective effect”. [7]. Simply put,  
587 “[o]verweight/obese females could shift their carbohydrate intake for higher cereal fiber to decrease T2DM  
588 risk, but higher GL may cancel-out this effect.” [7] Its must be crystal clear as Finland Vodka – from the  
589 perspective of evolutionary biology – that staple grain consumption has no precedent in human evolution  
590 until very recently [6]; see also [11].

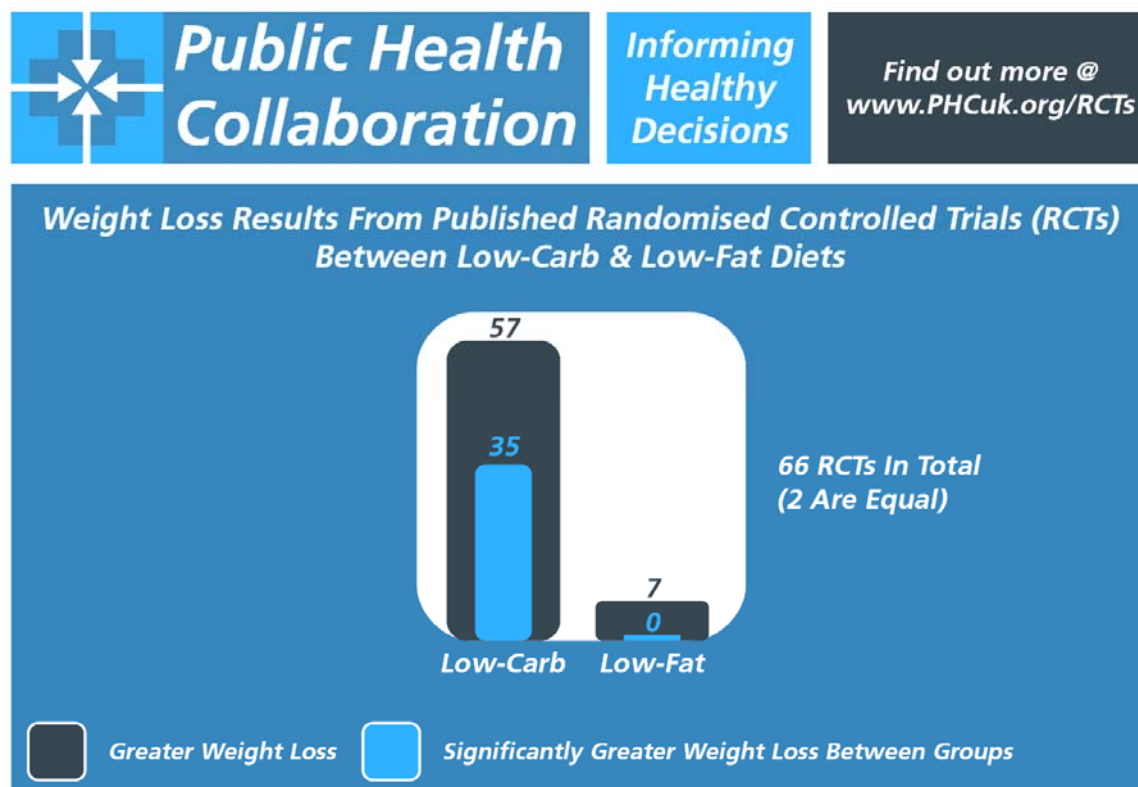
591 Leroy and Garwin [8] remind us that we generally take it for granted that any animal will flourish best on a  
592 diet that roughly resembles the one to which it was adapted. It is extremely unlikely that *Homo sapiens*  
593 turns out to be the only exception to this generally accepted biological principle. As was stressed in a highly  
594 influential 1973 essay by the evolutionary biologist Theodosius Dobzhansky, "Nothing in Biology Makes  
595 Sense Except in the Light of Evolution". [e.g., 9,10]

596

## 597 References

- 598 1. Hall KD. Challenges of human nutrition research. *Science* 2020 Mar 20;367(6484):1298-1300. doi:  
599 10.1126/science.aba3807.
- 600 2. Public Health Collaboration. Randomised [sic] Controlled Trials Comparing Low-Carb Diets Of Less Than  
601 130g Carbohydrate Per Day To Low-Fat Diets Of Less Than 35% Fat Of Total Calories.  
602 [https://phcuk.org/rcts/?fbclid=IwAR0ZPiJs\\_Bo4dO6ipt3u1QKmxYcjzazQNtuZPc0bopBzMS9BWnENcAy6Z5A](https://phcuk.org/rcts/?fbclid=IwAR0ZPiJs_Bo4dO6ipt3u1QKmxYcjzazQNtuZPc0bopBzMS9BWnENcAy6Z5A)  
603 (accessed 11/01/2021)
- 604 3. Young CM, Scanlan SS, Im HS, Lutwak L. Effect of body composition and other parameters in obese young  
605 men of carbohydrate level of reduction diet. *Am J Clin Nutr* 1971;24:290–6.
- 606 4. Volek JS, Sharman MJ, Gómez AI et al. Comparison of energy-restricted very low-carbohydrate and low-  
607 fat diets on weight loss and body composition in overweight men and women. *Nutr Metab (Lond)*. 2004  
608 Nov 8;1(1):13. doi: 10.1186/1743-7075-1-13.
- 609 5. Feinman RD, Pogozelski WK, Astrup A et al. Dietary carbohydrate restriction as the first approach in  
610 diabetes management: critical review and evidence base. *Nutrition* 2015 Jan;31(1):1-13.
- 611 6. Ludwig DS. Reply to S Joshi. *Nutr*. 2020 Oct 12;150(10):2836-2837. doi: 10.1093/jn/nxaa214.
- 612 7. Hardy DS, Garvin JT, Xu H. Carbohydrate quality, glycemic index, glycemic load and cardiometabolic risks  
613 in the US, Europe and Asia: A dose-response meta-analysis. *Nutr Metab Cardiovasc Dis*. 2020 Jun  
614 9;30(6):853-871. doi: 10.1016/j.numecd.2019.12.050. Epub 2020 Jan 13.

- 615 8. Leroy F, Cofnas N. Should dietary guidelines recommend low red meat intake? *Crit Rev Food Sci Nutr*.  
616 2020;60(16):2763-2772. doi: 10.1080/10408398.2019.1657063. Epub 2019 Sep 5.
- 617 9. Calabrese EJ, Agathokleous E. Theodosius Dobzhansky's view on biology and evolution v.2.0: "Nothing in  
618 biology makes sense except in light of evolution and evolution's dependence on hormesis-mediated  
619 acquired resilience that optimizes biological performance and numerous diverse short and longer term  
620 protective strategies". *Environ Res*. 2020 Jul;186:109559. doi: 10.1016/j.envres.2020.109559. Epub 2020  
621 Apr 21.
- 622 10. Varki A. Nothing in medicine makes sense, except in the light of evolution *J Mol Med (Berl)*. 2012  
623 May;90(5):481-94. doi: 10.1007/s00109-012-0900-5. Epub 2012 Apr 27.
- 624 11. Ludwig DS. The ketogenic diet: Evidence for optimism but high-quality research needed. *J Nutr*. 2020  
625 Jun 1;150(6):1354-1359. doi: 10.1093/jn/nxz308.
- 626
- 627

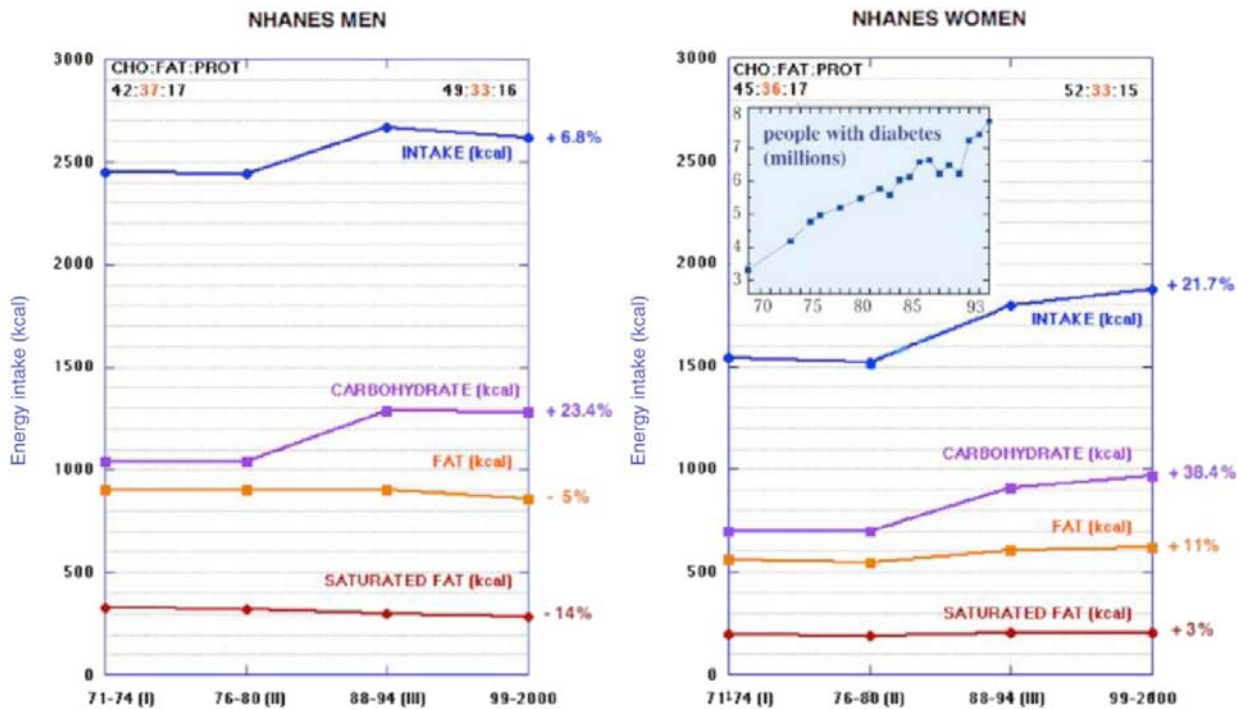


628

629

630 **[FIGURE LEGEND STARTS] Supplementary File 1 Figure 1.** Randomized controlled trials comparing low-  
631 carbohydrate diets of less than 130g carbohydrate per day to low-fat diets of less than 35% fat of total  
632 calories. For further details, see [2]. A serious question: *How likely is that the very-low-carb arms, time after*  
633 *time, substantially overreport dietary records, whereas the high-carb arms consistently underreport dietary*  
634 *records?* Figure adapted from [2]. **[FIGURE LEGEND ENDS]**

635



636

637

638 [FIGURE LEGEND STARTS] Supplementary File 1 Figure 3. Estimated macronutrient consumption during the  
 639 epidemic of obesity and type 2 diabetes. Data from the National Health and Nutrition Examination Survey  
 640 (NHANES) by year, and from Centers for Disease Control and Prevention (CDC). Inset: Incidence of diabetes  
 641 (millions of people with diabetes by indicated year). NHANES suggest a large increase in carbohydrate  
 642 intake as a major contributor to “caloric excess” (in reality, *macronutrient mass* excess) in the United States  
 643 from 1974 to 2000, whereas the absolute amount of fat decreased for men during this period and showed  
 644 only a slight increase for women. It was during this *very* period when the incidence of obesity and diabetes  
 645 raised to its current epidemic proportions, consistent with the mass balance model (MBM) predictions.  
 646 Whatever the extent to which the correlation between dietary carbohydrate consumption and  
 647 diabetes/obesity is causal, *the lack of association between the consumption of dietary fat and diabetes is of*  
 648 *real significance*. As pointed out by Feinman *et al.* [5], a lack of association is generally considered strong  
 649 evidence for a lack of causality. There is no more serious error than mistaking the effect for the cause; in  
 650 fact, Nietzsche called it “the real corruption of reason (*Twilight of Idols or How One Philosophizes with*  
 651 *Hammer, 1888*)”. CHO = carbohydrate; Prot = protein. Reproduced, with permission, from [5]. [FIGURE  
 652 LEGEND ENDS]

653

654

655

656 **NOTE:**

657 **As Corresponding Author, I confirm that all SUPPLEMENTARY FILES have been read**  
 658 **and approved for submission by all the named authors.**

659 **Sincerely,**

660 **Anssi H. Manninen 22/01/2021**

661

662

663 **“Macronutrient mass intake explains deferential weight and fat loss in**  
664 **isocaloric diets”**

## 665 **SUPPLEMENTARY FILE 2**

666 **Mass balance model (MBM) does not violate any laws of physics**

667

668 In the “Introduction” section of the mainbody of the manuscript, it is briefly clarified that the mass balance  
669 model (MBM) does not violate the First Law of Thermodynamics. In this **SUPPLEMENTARY FILE 2**, we  
670 further discuss this topic to clear some confusion.

671 As explained by Arencibia-Albite [1], it is possible for an open system, such as the human body, to be at  
672 mass balance while the system experiences a persistent energy imbalance; that is, energy balance may be  
673 positive ( $\Delta E > 0$ ) or negative ( $\Delta E < 0$ ) yet the **mass change** that may occur during energy flux is not required  
674 by the First Law of Thermodynamics (i.e., the Law of Conservation of Energy) to mirror the energy balance  
675 **direction.**

676 *Thus, it is clear that the MBM does not violate the First Law of Thermodynamics.*

677 The energy balance theory (EBT), in contrast, ignores the Law of Conservation of Mass [2]. This Law dates  
678 from Antoine Lavoisier’s 1789 discovery that mass is neither created nor destroyed in any chemical  
679 reaction; hence, the O<sub>2</sub> mass that enters cellular respiration plus the mass of macronutrients that served as  
680 energy fuel will equal the mass of the excreted oxidation products. Daily weight loss is, therefore, the result  
681 of daily the elimination of oxidation products (CO<sub>2</sub>, H<sub>2</sub>O, urea, etc.) and not a consequence of the heat  
682 release upon nutrient combustion (i.e., daily energy expenditure).

683 The **Supplementary File Figure 1** illustrates an example of how weight stability happens concomitant to a  
684 persistent and significant energy imbalance. The reader may wonder how we are certain that is not  
685 possible to obtain a set of mass-in/mass-out values that result in the expected coincidence of mass balance  
686 with energy balance? Arencibia-Albite [1], using linear algebra, analyzed under what conditions mass  
687 balance concur with energy balance and found that both **ONLY** coexist if the following three conditions are  
688 simultaneously satisfied:

689 
$$\text{average absorbed fat mass} = \text{average oxidized fat mass}$$

690 
$$\text{average absorbed carbohydrate mass} = \text{average oxidized carbohydrate mass}$$

691 
$$\text{average absorbed protein mass} = \text{average oxidized protein mass}$$

692 For example, if

693  $65g = \text{average absorbed fat mass} = \text{average oxidized fat mass} = 65g$

694  $250g = \text{average absorbed carbohydrate mass} = \text{average oxidized carbohydrate mass} = 250g$

695  $85g = \text{average absorbed protein mass} = \text{average oxidized protein mass} = 85g$

696 Then,

697  $\text{Average mass in} = 65g + 250g + 85g = \text{Average mass out}$

698 And, hence

699  $\text{Average EI} = (4.7\text{kcal/g}) \times 65g + (4.2\text{kcal/g}) \times 250 + (9.4\text{kcal/g}) \times 85g = \text{Average EE} = 2154.5\text{kcal}$

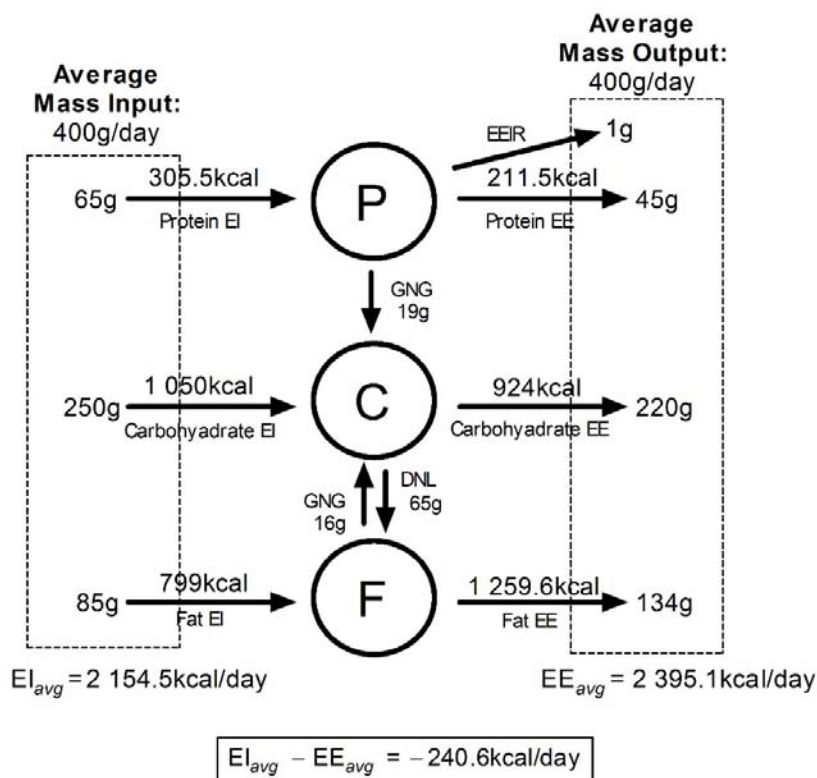
700 The reason why this is the only way in which weight stability and energy balance coincide lies outside  
701 biochemistry and physiology. In mathematics and physics any well-defined problem, such as the  
702 coincidence of weight stability and energy balance, has one and only one possibility:

- 703 1. The problem is unsolvable.
- 704 2. The problem has one and only one solution.
- 705 3. The problem has many solutions.

706 Thus, not all well-defined problems can be solved and if they do it may be true that it has exactly one  
707 solution. A classic example is the famous Königsberg bridge problem that in 1736 the Swiss mathematician  
708 Leonard Euler was able to demonstrate, without any doubt, that the problem solution did not exist leading  
709 to the birth of graph theory, a branch of mathematics with many important applications. Consequently, as  
710 demonstrated by Arencibia-Albite [1], the simultaneous satisfaction of these three requirements is what  
711 guarantees that weight stability happens together with energy balance and NO OTHER WAY IS POSSIBLE.  
712 Consequently, body weight stability must coincide with a persistent energy imbalance, since, as exemplified  
713 in the Supplementary File 2 Figure 1, the constitutive processes of gluconeogenesis and *de novo* lipogenesis  
714 impede the simultaneous satisfaction of afore mentioned conditions.

715





716

717

718 **[FIGURE LEGEND STARTS] Supplementary File 2 Figure 1. Mass balance can occur in energy imbalance.**  
 719 Here we illustrate hypothetical macronutrient mass input vs. output pattern that achieves *weight*  
 720 *stability without energy balance*. Circles represent macronutrient (protein [P], carbohydrate [C], fat [F])  
 721 body reserves. The left dashed box contains the daily average input mass, whereas the right box encloses  
 722 the daily average output mass. Energy densities are as follows:  $\rho_F = 9.4$  kcal/g,  $\rho_C = 4.2$  kcal/g,  $\rho_P = 4.7$   
 723 kcal/g. While mass balance is achieved, energy balance is NOT since some of the absorbed or stored protein  
 724 (amino acids) may be transformed into glucose (gluconeogenesis, GNG) or lost through energy  
 725 expenditure-independent routes DNL = *de novo* lipogenesis. **[FIGURE LEGEND ENDS].**

## 726 References

- 727 1 Arencibia-Albite F. Serious analytical inconsistencies challenge the validity of the energy balance theory.  
 728 Heliyon. 2020 Jul 10;6(7):e04204. doi: 10.1016/j.heliyon.2020.e04204. eCollection 2020 Jul.
- 729 2. Sterner RW, Small GE, Hood JM. (2011) The Conservation of Mass. Nature Education Knowledge  
 730 3(10):20.

731

732 **[DEAR EDITORS, PLEASE NOTE THAT THE REFERENCES IN THIS SUPPLEMENTARY FILE ARE**  
 733 **SEPARATE FROM THE REFERENCES IN THE MAIN BODY OF THE MANUSCRIPT. THUS, THEY DO**  
 734 **NOT FOLLOW THE SAME REFERENCE NUMBERING. AHM]**

735

736 **NOTE:**

737 **As Corresponding Author, I confirm that this SUPPLEMENTARY FILE 2 has been read and**  
738 **approved for submission by all the named authors.**

739 **Sincerely,**

740 **Anssi H. Manninen 21/01/2021**

741

742

743

744 **“Macronutrient mass intake explains deferential weight and fat loss in isocaloric**  
745 **diets”**

## 746 **SUPPLEMENTARY FILE 3**

### 747 **Energy efficiency in weight loss diets**

748 Contrary what the late Dr. Atkins taught, numerous prominent obesity experts have strictly, if not  
749 fanatically, maintained that a isocaloric very-low-carbohydrate/high-fat diet cannot lead to a greater weight  
750 loss than a isocaloric high-carbohydrate/low-fat diet – except for the small changes in body fluids – because  
751 it would somehow violate the laws of thermodynamics. This is, of course, *not* the case (**See Supplementary**  
752 **File 2**).

753 Where does the greater weight loss (**See Supplementary File 1**) comes from? Some claim that it is mostly  
754 water weight, but this is only true initially. Water loss occurs due to glycogen depletion [1]; however, in the  
755 long term, fat loss is a substantial portion (**See the main body of the paper**). Others have claimed that a  
756 very-low-carbohydrate diet leads to progressive loss of muscle mass, but this assumption is clearly  
757 fallacious [e.g., 2,3,4].

758 Regarding the main topic of this **Supplementary File 3**, It has been suggested that “[t]he greater weight  
759 [and fat] loss on carbohydrate restricted diets, popularly referred to as metabolic advantage can thus be  
760 understood in terms of the principles of nonequilibrium thermodynamics and is a consequence of the  
761 dynamic nature of bioenergetics where it is important to consider kinetic as well as thermodynamic  
762 variables.” [5] (See also [6]). In his latest paper [7], Feinman states that “[e]nergetic inefficiency, substrate  
763 cycling and demands of gluconeogenesis support observed advantages for weight [and fat] loss.”

764 In our humble opinion, Feinman and Fine [5,6,7] fail to recognize that efficacy is NOT a matter of  
765 incomplete oxidation of substrates; rather, it is about the way the body uses the available fuel resources.  
766 Let say you start to run 5km every day and you will soon realize that you can complete the same distance in  
767 same time (let say 0.5 h) but with a smaller amount of heartbeats. Now the body has adapted to this  
768 cardiovascular stress physiologically, biochemically and – in the long run – anatomically – and thus has  
769 become *more efficient fuel utilizer*. That is, your body can achieve the same running average speed  
770 (5km/0.5 h=10km/h) utilizing less fuel. However, every time the body oxidizes 1 g of glucose while running  
771 the heat released by the body continues to be ~4kcal, which will not change as you age or as a function of  
772 your genome, epigenome, or proteome.

773 *Body chemistry – and thus body mass – is all about detailed mass balances, not about energy conservation.*

774 Mass balance model (MBM) maintains that a low-carbohydrate (LCD) is more effective in minimizing the

775 daily macronutrient mass intake relative to a high-carbohydrate diet (HCD), and – consequently – a LCD  
776 manifests a substantially larger daily weight and fat loss than a HCD. *According to the MBM, weight loss*  
777 *advantage of a LCD over HCD is independent of the differences in the physiological effects of the diets (e.g.,*  
778 *dietary carbohydrate-induced insulin secretion). Rather, deferential weight loss simply emerges from*  
779 *dissimilar macronutrient mass intakes.*

780 ***Answer the question: what do you measure when you stand on the bathroom scale, your body mass or***  
781 ***your energy?***

782 On the other hand, we agree with Feinman’s [6] recent conclusion that the control of the glucose-insulin  
783 axis, via drastic carbohydrate restriction, allows improvement in *all* of the markers of metabolic syndrome  
784 and provides methods for remission and reversal of type 2 diabetes [See Supplementary File Figure 1].

785 To be fair, one of us (AHM) must admit being “guilty” of suggesting similar ideas about the “metabolic  
786 advantage” of LCDs as Feinman and Fine [e.g., 8]. Sometimes it just happens that the whole knowledge  
787 structure turns out to be flawed and - thus – has to be abandoned. *The whole game needs to be changed.*  
788 However, correcting a mistake always requires sacrifice. If the mistake has been great, so must be the  
789 sacrifice. And if the truth has been denied for a very long time, a dangerous amount of sacrificial debt may  
790 have been accumulated [9].

791 The take-home message of this **Supplementary File 3** is that contrary what Coca-Cola-sponsored  
792 researchers (e.g., Global Energy Balance Network; GEBN) have propagated [e.g., 10, 11, 12], the most  
793 "cost-effective" way to gain body weight/body fat is to ingest pure carbohydrate-based energy-providing  
794 mass (EPM), i.e., sugars, syrup and/or starch. It does not really matter which one in terms of body  
795 weight/body fat.

796

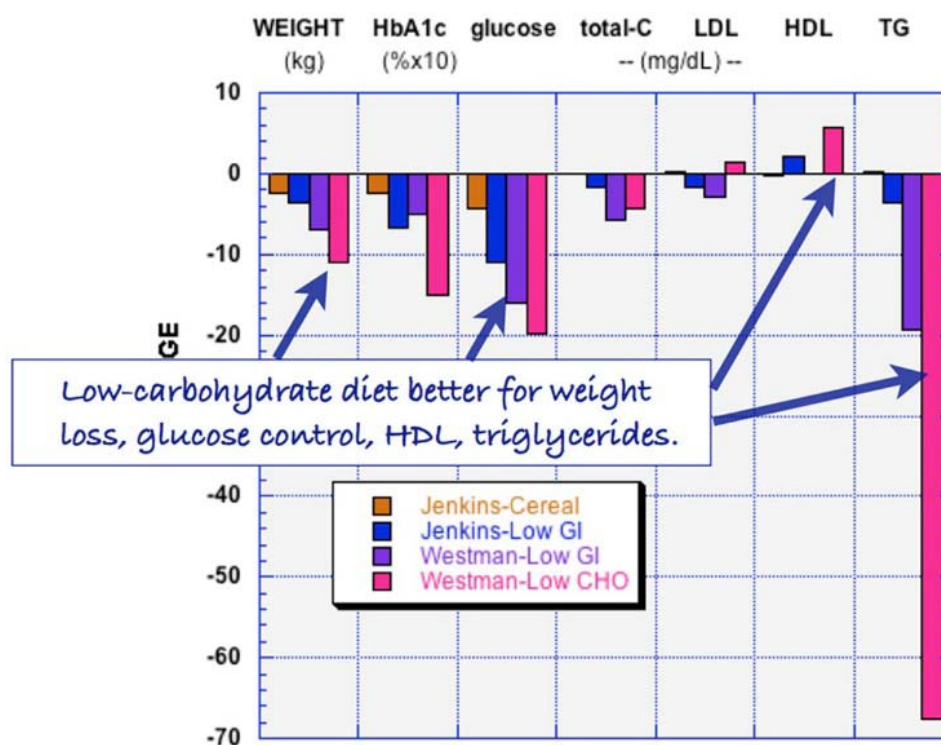
## 797 **References**

- 798 1. Fernández-Elías VE, Ortega JF, Nelson RK et al. Ricardo Mora-Rodriguez. Relationship between muscle  
799 water and glycogen recovery after prolonged exercise in the heat in humans. *Eur J Appl Physiol.* 2015  
800 Sep;115(9):1919-26. doi: 10.1007/s00421-015-3175-z. Epub 2015 Apr 25.
- 801 2. Manninen AH. Very-low-carbohydrate diets and preservation of muscle mass. *Nutr Metab (Lond).* 2006  
802 Jan 31;3:9. doi: 10.1186/1743-7075-3-9.
- 803 3. Rondanelli M, Faliva MA 2, Gasparri C et al. Current opinion on dietary advice in order to preserve fat-  
804 free mass during a low-calorie diet. *Nutrition.* 2020 Apr;72:110667. doi: 10.1016/j.nut.2019.110667. Epub  
805 2019 Dec 5.
- 806 4. Casanueva FF, Castellana M 3 Bellido D et al. Ketogenic diets as treatment of obesity and type 2 diabetes  
807 mellitus. *Rev Endocr Metab Disord.* 2020 Sep;21(3):381-397. doi: 10.1007/s11154-020-09580-7.
- 808 5. Feinman RD, Fine EJ. Nonequilibrium thermodynamics and energy efficiency in weight loss diets. *Theor*  
809 *Biol Med Model.* 2007; 4: 27. Published online 2007 Jul 30. doi: 10.1186/1742-4682-4-27.
- 810 6. Feinman RD. Beyond “a Calorie is a Calorie”: An Introduction to Thermodynamics. In: *Nutrition in Crisis:*  
811 *Flawed Studies, Misleading Advice, and the Real Science of Human Metabolism.* Chelsea Green Publishing,  
812 2019.
- 813 7. Feinman RD. The biochemistry of low-carbohydrate and ketogenic diets. *Curr Opin Endocrinol Diabetes*  
814 *Obes.* 2020 Oct;27(5):261-268. doi: 10.1097/MED.0000000000000575.

- 815 8. Antonio J. Manninen AH. Eating to Improve Body Composition. In: *Essentials of Sports Nutrition and*  
816 *Supplements*. Humana Press, 2008.
- 817 9. Peterson JB. *12 Rules for Life: An Antidote to Chaos*. Random House Canada, 2018.
- 818 10. Barlow P, Serôdio P, Ruskin G et al.. Science organisations and Coca-Cola's 'war' with the public health  
819 community: insights from an internal industry document J Epidemiol Community Health. 2018  
820 Sep;72(9):761-763. doi: 10.1136/jech-2017-210375. Epub 2018 Mar 14.
- 821 11. Greenhalgh S Inside ILSI: How Coca-Cola, Working through Its Scientific Nonprofit, Created a Global  
822 Science of Exercise for Obesity and Got It Embedded in Chinese Policy (1995-2015). Health Polit Policy Law.  
823 2020 Sep 16;8802174. doi: 10.1215/03616878-8802174. Online ahead of print.
- 824 12. Serodio P, Ruskin G, McKee M et al. Evaluating Coca-Cola's attempts to influence public health 'in their  
825 own words': analysis of Coca-Cola emails with public health academics leading the Global Energy Balance  
826 Network. Public Health Nutr. 2020 Oct;23(14):2647-2653. doi: 10.1017/S1368980020002098. Epub 2020  
827 Aug 3.

828

829



Low carbohydrate diets are better than low-GI diets or high cereal diets for weight loss, HbA1c, triglycerides and HDL. Data from Westman, *et al* (2008) *Nutr Metab (Lond)*, 5 (36). and Jenkins, *et al* (2008), *JAMA* 300: 2742-2753.

830

831 [FIGURE LEGEND STARTS] Supplementary File 3 Figure 1. Low-carbohydrate diets are more effective for  
832 weight loss, glycated hemoglobin (HbA1c), triglycerides (TG) and high-density lipoprotein than low-glycemic  
833 (GI) or high cereal diets, all of which are consistent with the MBM. CHO = carbohydrate; Total-C = total

834 cholesterol; LDL = low-density lipoprotein. Preproduced, with permission, from [6]. **[FIGURE LEGEND ENDS]**

835 (

836

837

838 **[DEAR EDITORS, PLEASE NOTE THAT THE REFERENCES IN THIS SUPPLEMENTARY FILE ARE**  
839 **SEPARATE FROM THE REFERENCES IN THE MAIN BODY OF THE MANUSCRIPT. THUS, THEY DO**  
840 **NOT FOLLOW THE SAME REFERENCE NUMBERING. AHM]**

841

842

843

844

845

846

847

848