

1 What does the COVID-19 pandemic mean for the next

2 decade of onchocerciasis control and elimination?

3

4 Original article

5

6 Jonathan I.D. Hamley^{a,b*}, David J. Blok^c, Martin Walker^{a,d}, Philip Milton^{a,b},

7 Adrian D. Hopkins^e, Louise C. Hamill^f, Philip Downs^f, Sake J. de Vlas^c, Wilma A. Stolk^c,

8 Maria-Gloria Basáñez^{a,b}

9 ^aLondon Centre for Neglected Tropical Disease Research (LCNTDR), Department of

10 Infectious Disease Epidemiology, School of Public Health, Faculty of Medicine (St Mary's

11 campus), Imperial College London, Norfolk Place, London W2 1PG, UK; ^bMRC Centre for

12 Global Infectious Disease Analysis, Department of Infectious Disease Epidemiology, School

13 of Public Health, Faculty of Medicine (St Mary's campus), Imperial College London, Norfolk

14 Place, London W2 1PG, UK; ^cDepartment of Public Health, Erasmus MC, University Medical

15 Center Rotterdam, P.O. Box 2040, 3000 CA Rotterdam, The Netherlands; ^dLondon Centre

16 for Neglected Tropical Disease Research (LCNTDR), Department of Pathobiology and

17 Population Sciences, Royal Veterinary College, University of London, Hatfield AL9 7TA, UK;

18 ^eNeglected and Disabling Diseases of Poverty Consultant, Kent, UK; ^fSightsavers, 35

19 Perrymount Road, Haywards Heath, RH16 3BW, UK

20 * corresponding author; E-mail: jonathan.hamley11@imperial.ac.uk

21 **Data availability statement:** No new data were used in this study. The model code is

22 available on Github.

23 Abstract

24 **Background** Mass drug administration (MDA) of ivermectin for onchocerciasis has been
25 disrupted by the SARS-CoV-2 (COVID-19) pandemic. Mathematical modelling can help
26 predict how missed/delayed MDA will affect short-term epidemiological trends and
27 elimination prospects by 2030.

28 **Methods** Two onchocerciasis transmission models (EPIONCHO-IBM and ONCHOSIM) are
29 used to simulate microfilarial prevalence trends, elimination probabilities, and age-profiles
30 of *Onchocerca volvulus* microfilarial prevalence and intensity, for different treatment
31 histories and transmission settings, assuming no interruption, a 1-year (2020) or 2-year
32 (2020–2021) interruption. Biannual MDA or increased coverage upon MDA resumption are
33 investigated as remedial strategies.

34 **Results** Programmes with shorter MDA histories and settings with high pre-intervention
35 endemicity will be the most affected. Biannual MDA is more effective than increasing
36 coverage for mitigating COVID-19's impact on MDA. Programmes which had already
37 switched to biannual MDA should be minimally affected. In high transmission settings with
38 short treatment history, a 2-year interruption could lead to increased microfilarial load in
39 children (EPIONCHO-IBM) or adults (ONCHOSIM).

40 **Conclusions** Programmes with shorter (annual MDA) treatment histories should be
41 prioritised for remedial biannual MDA. Increases in microfilarial load could have short- and
42 long-term morbidity and mortality repercussions. These results can guide decision-making
43 to mitigate the impact of COVID-19 on onchocerciasis elimination.

44

45 **Key Words:** COVID-19, Ivermectin, Mass Drug Administration, Mathematical Modelling,
46 Onchocerciasis, Remedial Strategies

47

48 **Running Title:** COVID-19 and onchocerciasis elimination

49

50

51

52

53 Introduction

54 The SARS-CoV-2 virus (COVID-19) pandemic has led to severe disruptions to routine public
55 health services on a global scale. These disruptions are expected to be particularly
56 pronounced in low- and middle-income countries due to already under-resourced
57 healthcare systems. On April 1st 2020, the World Health Organization (WHO) advised that
58 mass drug administration (MDA) and epidemiological surveys for neglected tropical diseases
59 (NTDs) tackled by preventive chemotherapy and transmission control (PCT) should be
60 postponed.¹ Updated guidance was released on July 27th, which included a decision-making
61 framework, allowing countries to restart routine MDA given careful risk assessment.²
62 Onchocerciasis is one such PCT disease, centred on ivermectin (Mectizan®) MDA, delivered
63 annually in the majority of endemic countries in Africa.

64

65 Although so-called 'lockdowns' and delayed MDA might be effective in temporally reducing
66 the transmission of the SARS-CoV-2 virus, the implications for both short- and long-term
67 onchocerciasis transmission are less clear. The impact of the Ebola outbreaks in West Africa
68 (2013–2016) on morbidity due to other diseases (such as tuberculosis and HIV) can provide
69 some insight into the implications of withdrawing routine public health services.^{3,4} However,
70 comparability is limited due to the stark differences in the scale and manifestations of Ebola
71 and COVID-19. There are concerns that delaying MDA might increase onchocerciasis
72 morbidity in the short term, and in the long term, undermine progress made towards the
73 2030 elimination of transmission (EOT) goals proposed in the recently launched WHO 2021–
74 2030 Road Map for NTDs.⁵ It is, therefore, important to quantify where (in terms of
75 transmission setting and treatment history) the impact of postponements of ivermectin

76 MDA for onchocerciasis will be most pronounced and to identify the most effective
77 mitigation strategies to help affected programmes to get back on track. This will allow
78 better planning and prioritisation of ivermectin distribution/treatment upon safe MDA
79 resumption.
80
81 Delayed ivermectin MDA, or reduced treatment coverage, could result not only from
82 population-wide lockdowns to reduce COVID-19 transmission and the resulting redirection
83 or disruption of health services, but also from shortages in drug availability (due to slower
84 production and supply chains, or exceeded drug shelf-life by the time MDA
85 recommences).^{6,7} Deadlines for drug orders (typically by August for delivery in the following
86 year), as required by the Mectizan Donation Program (MDP, the body providing oversight
87 for ivermectin donation to endemic countries), might also be problematic. In addition to
88 these challenges, programmes will have to be adaptive in the face of unforeseen setbacks
89 which may emerge as MDA recommences, remedial strategies (such as increased MDA
90 coverage and/or frequency) are attempted, and as the COVID-19 pandemic progresses.
91
92 Mathematical models of onchocerciasis transmission provide a useful predictive tool for
93 understanding the impacts of ivermectin MDA interruptions on the short-term (increases in
94 transmission intensity) and long-term (elimination prospects), as well as the potential
95 benefit of remedial mitigation strategies to help programmes get back on track. Although
96 the resurgence of helminth transmission is typically slower than that of viral, bacterial, and
97 protozoan infections (due to differences in life-history), short-term increases in infection
98 prevalence and intensity may increase onchocerciasis-associated morbidity.⁸ Delays in
99 treating children who would otherwise receive ivermectin when turning 5 could result in

100 higher microfilarial loads experienced early in life, which may impact health outcomes in
101 later years.⁹

102

103 In this paper, we use the EPIONCHO-IBM and ONCHOSIM transmission models to: i) quantify
104 where (in terms of transmission setting and treatment history) the impact of interruptions
105 to ivermectin MDA for onchocerciasis will be most pronounced, allowing better planning
106 and prioritisation of ivermectin distribution/treatment upon resumption, and ii) investigate
107 how mitigation strategies based on increased frequency (biannual MDA) of increased
108 coverage can help affected programmes to get back on track. Both models contributed
109 insights to inform the WHO 2021–2030 NTD Roadmap,¹⁰ and provided preliminary but less
110 comprehensive results for a report to the WHO on the impact of COVID-19 on NTD
111 programmes.¹¹

112

113 **Materials and Methods**

114 ***Models***

115 We used two individual-based stochastic transmission models, namely EPIONCHO-IBM¹²
116 and ONCHOSIM¹³ to address seven questions concerning the effect of MDA disruptions due
117 to COVID-19: (i) what is the impact of delaying treatment for one or two years upon
118 microfilarial prevalence trends and probability of elimination by 2030?; (ii) which pre-
119 intervention endemicity levels are particularly vulnerable?; (iii) how much more vulnerable
120 are programmes with shorter treatment histories than those with longer ones?; (iv) which
121 age groups will be most affected?; (v) are remedial strategies based on increasing treatment
122 frequency (to biannual MDA) or increasing treatment coverage during the early stages of

123 MDA resumption useful for mitigating any setbacks?; (vi) how will programmes that had
124 already switched to biannual MDA be impacted?; and (vii) what will be the effect on (West
125 African) countries whose NTD programmes had already been disrupted by the Ebola
126 outbreak in 2014?

127

128 In the context of a 1-year interruption or 1 year of missed MDA, the terms ‘interruption’ or
129 ‘missed’ are used to describe a situation in which the MDA round planned to take place 12
130 months after a successful round pre-COVID19 is not delivered (regardless of the calendar
131 month in which treatment is usually distributed according to setting). ‘Remedial’ MDA
132 implies that once MDA can safely resume,² additional MDA (either an extra round or
133 increased coverage within one round) is delivered. Hence, ‘remedial’ biannual MDA can be
134 interpreted as ‘delayed treatment’ if a round of annual MDA is not delivered when planned
135 but given in addition to the planned round in the following (not necessarily calendar) year.
136 Although, for simplicity, modelling results are presented as if MDA were delivered at the
137 beginning of each year, what is important is the duration between two consecutive MDA
138 rounds, and whether MDA is delivered with increased frequency or coverage when
139 treatment can recommence.

140

141 Supplementary Information A: Supplementary Methods provides a detailed description of
142 the models. All (therapeutic) coverage levels refer to the percentage of people treated out
143 of the total population, where total population includes children <5 years old and
144 individuals who never take treatment (non-participation). Fig. S1 illustrates how elimination
145 probabilities are calculated.

146

147 We followed the five principles of the Neglected Tropical Disease Modelling Consortium,¹⁴
148 to advocate and adhere to using good practice for policy-relevant modelling. Supplementary
149 Table S1 presents the PRIME-NTD (Policy-Relevant Items for Reporting Models in
150 Epidemiology of Neglected Tropical Diseases) table.

151

152 **Scenarios**

153 **Treatment histories and transmission settings**

154 We simulated a range of scenarios reflecting pre-control endemicity and historical
155 treatment durations in the former Onchocerciasis Control Programme in West Africa (OCP,
156 1975–2002), specifically areas in the western extension in which ivermectin MDA was
157 implemented without vector control,¹⁵ and the African Programme for Onchocerciasis
158 Control (APOC, 1995–2015).¹⁶

159

160 **Pre-control endemicity:** For the sake of completeness, we considered pre-intervention
161 onchocerciasis endemicity levels given by baseline *Onchocerca volvulus* microfilarial
162 prevalence of 20–85% (i.e. from hypoendemic to highly hyperendemic settings), although
163 APOC prioritised treatment only in areas with microfilarial prevalence $\geq 40\%$.

164

165 **History of ivermectin MDA:** Annual ivermectin MDA programmes were simulated with start
166 years 2000, 2003, 2006, 2009, 2012, 2014, 2017 and 2020, assuming that 65% of the total
167 population is treated per round (i.e. approximately 80% coverage of eligible individuals aged
168 ≥ 5 years). The level of systematic non-participation was assumed to be 5%.

169

170 **Pre-existing biannual MDA programmes:** We also modelled scenarios for pre-existing
171 biannual programmes preceded by low coverage annual MDA motivated by the situation in
172 the Madi-Mid North focus in Uganda,¹⁷ where the main vector is *Simulium damnosum sensu*
173 *stricto* (for which both models are parameterised). These pre-existing biannual programmes
174 were assumed to have started in 1994 with annual MDA at 25% coverage (due for instance,
175 to internal conflict, as was the case of the Madi-Mid North focus) until 2012, when biannual
176 treatment with 75% coverage of the total population (approximately 90% coverage of
177 eligible individuals) began.¹⁷ A pre-intervention 50% microfilarial prevalence was motivated
178 by the baseline values for Adjumani-Moyo,¹⁶ and Kitgum¹⁸ in the Madi-Mid North focus.
179

180 **Previous Ebola (2013–2014) outbreak:** We modelled settings previously affected by the
181 Ebola outbreak in western Africa in 2014, which were broadly motivated by the treatment
182 histories in Sierra Leone, Liberia and Guinea.^{19–21} We assumed annual treatment from 2003
183 to 2013 (with coverage gradually increasing from 25% in 2003 to 65% in 2013), no treatment
184 in 2014, 30% coverage in 2015, 65% coverage in 2016–2019, no treatment in 2020, 50%
185 coverage in 2021, and 65% coverage from 2022–2030.

186

187 ***Modelling interruptions due to COVID-19***

188 We projected microfilarial dynamics and estimated elimination probabilities assuming either
189 a 1-year (2020) or 2-year (2020 and 2021) interruption to ivermectin MDA. Additionally, we
190 tested various assumptions of delays in achieving pre-COVID-19 coverage upon treatment
191 resumption, e.g. missing MDA in 2020 but gradually increasing coverage from 30% in 2021,
192 to 50% in 2022, and to 65% in 2023–2030. Levels of systematic non-participation were set at
193 5%.

194

195 ***Modelling remedial strategies***

196 We modelled the effectiveness of increasing frequency (to biannual treatment at 65%
197 coverage) or therapeutic coverage (to 75% for annual treatment) as strategies for mitigating
198 the impact of missed treatment rounds (either in 2020 or in 2020 and 2021). For a selection
199 of the scenarios described above, we investigated the capacity for remedial treatment to
200 revert the microfilaridermia trends and restore elimination probabilities (with MDA ceasing
201 in 2030) to those predicted without interruption. Typically, MDP only approves ivermectin
202 donations for biannual treatment if programmes can demonstrate sufficiently high coverage
203 in preceding years. Therefore, we assumed that remedial biannual MDA followed only after
204 a year of annual 65% coverage once programmes restart.

205

206 **Outcome measures:** We present three model outputs to understand the implications of
207 interruptions to MDA: (i) temporal trends in microfilarial prevalence (percent) to
208 understand the short-term implications; (ii) probabilities of achieving elimination by 2030 to
209 understand the long-term implications, and (iii) age-profiles for microfilarial prevalence
210 (percent) and intensity (microfilariae/skin snip) to identify the most affected age groups.

211

212 **Results**

213 ***Impact of interruptions to ivermectin MDA for annual programmes***

214 **Temporal microfilarial prevalence trends:** Fig. 1 shows, for EPIONCHO-IBM and ONCHOSIM,
215 the microfilarial prevalence dynamics for programmes with a long (starting in 2000) and
216 short (starting in 2017) history of ivermectin MDA, comparing no interruption with no

217 treatment during 2020 (and a 30% coverage at resumption in 2021) and with no treatment
218 during 2020 and 2021 (with a 30% coverage at resumption in 2022). The models
219 qualitatively agree on how the temporal microfilarial prevalence trends during an
220 interruption differ from those for continuous MDA through 2020–2021 for MDA starting in
221 2017. Increases in microfilarial prevalence after a 2-year interruption (2020–2021) are more
222 pronounced than after a 1-year (2020) interruption. How coverage, once treatment
223 recommences, influences the temporal dynamics of microfilarial prevalence after a 1-year
224 interruption is shown in Supplementary Information B: Supplementary Results, Fig. S2
225 (EPIONCHO-IBM), and Fig. S3 (ONCHOSIM). A detailed discussion of how the dynamics
226 following an interruption differ from those from without an interruption is presented in
227 Supplementary Fig. S4.

228

229 ***[Figure 1 approximately here]***

230

231 **Elimination probabilities:** Although EPIONCHO-IBM generally predicts lower elimination
232 probabilities than ONCHOSIM, the models agree qualitatively on the impact of MDA
233 interruptions due to COVID-19. Both models predict that interruptions to MDA will reduce
234 the prospects of onchocerciasis elimination by 2030 if no mitigation strategies were
235 implemented. Both models also predict that programmes with shorter treatment histories
236 will be more vulnerable to MDA disruptions, than those which have distributed MDA for
237 longer, particularly if treatment is delayed for two years (Fig. 2). The impact of a 1- and 2-
238 year interruption on elimination probabilities with start years ranging from 2000 to 2020 is
239 presented in Supplementary Fig. S5 and S6.

240 a

241 ***[Figure 2 approximately here]***

242

243 ***Mitigation strategies for annual programmes***

244 **Temporal microfilarial prevalence trends:** Both models suggest that for a programme with
245 a short treatment history, increasing treatment frequency, i.e. implementing remedial
246 biannual MDA at 65% coverage upon resumption of MDA, will be more effective at reducing
247 the impact of treatment disruptions than increasing treatment coverage (i.e. implementing
248 remedial 75% coverage of annual MDA). We illustrate these results after a 2-year
249 interruption (2020–2021) when MDA initially resumes at low annual coverage (30%, 2022),
250 returns to annual 65% coverage (2023), and then either increases to a 6-monthly frequency
251 for two consecutive years (2024–2025) at 65% coverage (Fig. 3), or increases to 75% annual
252 MDA coverage also for two consecutive years (2024–2025) (Fig. 4). Remedial biannual
253 treatment results in lower microfilarial prevalence leading up to 2030 (Fig. 4) than remedial
254 increased coverage (Fig. 3). The temporal microfilarial prevalence dynamics for a 1-year
255 interruption with either remedial increased treatment frequency or coverage are shown in
256 Supplementary Fig. S7 and S8.

257

258 ***[Figure 3 and Figure 4 approximately here]***

259

260 **Elimination probabilities with remedial strategies:** For a 2-year interruption, although
261 neither remedial strategy is sufficient to achieve the same elimination probabilities found in
262 the absence of an interruption, 2 years of remedial biannual MDA results in higher
263 elimination probabilities than remedial increase in coverage (Supplementary Fig. S9). For
264 some treatment histories and pre-intervention endemicities (which do not result in 100%

265 elimination probability without interruption), a 1-year of missed MDA followed by 1 year of
266 remedial biannual MDA gives similar elimination probabilities to those in the absence of
267 MDA disruptions (Supplementary Fig. S10).

268

269 ***Pre-existing biannual programmes and those previously affected by Ebola***

270 For the pre-existing biannual scenarios explored (which had achieved high pre-COVID-19
271 therapeutic coverage), a 1-year interruption did not result in pronounced microfilarial
272 resurgence according to either model (Fig. 5). For this scenario, it was considered that
273 programmes would resume treatment in 2021 given their strong performance before
274 COVID-19, so a 2-year interruption was not investigated.

275

276 ***[Figure 5 approximately here]***

277

278 EPIONCHO-IBM predicts that the impact of a 1-year interruption due to COVID-19 in 2020
279 on microfilarial prevalence dynamics in West African programmes that were affected by the
280 Ebola outbreak in 2014 will depend (like in other scenarios) on transmission setting (Fig. 6).

281 When assuming a 50% baseline microfilarial prevalence, there were small differences
282 between no interruption and a 1-year interruption by 2030; however, for the 70% baseline
283 microfilarial prevalence settings, clear differences between no interruption and a 1-year
284 interruption were still evident by 2030 according to both models.

285

286 ***[Figure 6 approximately here]***

287

288 ***Age profiles of microfilarial prevalence and intensity***

289 EPIONCHO-IBM and ONCHOSIM predict noticeably different age (and sex) patterns of
290 microfilarial prevalence and intensity after three rounds of annual ivermectin MDA, with or
291 without a 2-year (2020–2021) interruption (with MDA starting in 2017 and initial
292 microfilarial prevalence of 70%) (Fig. 7). EPIONCHO-IBM predicts higher prevalence and
293 intensity in children under the age of ten years following a 2-year MDA interruption than
294 when there is no MDA interruption, and this is particularly pronounced in boys (Fig. 7A and
295 7B for prevalence; 7E and 7F for intensity). Following the interruption, ONCHOSIM predicts
296 very low infection prevalence and intensity in children under 5 years, and an evident, but
297 smaller increase in 5–10-year olds than in EPIONCHO-IBM (Fig. 7C and 7D for prevalence; 7G
298 and 7H for intensity). By contrast, ONCHOSIM predicts a marked microfilarial prevalence
299 and intensity increase in the ≥ 20 years olds compared to EPIONCHO-IBM. (The baseline
300 profiles are shown as insets in Fig. 7; individual-level microfilarial load is illustrated in
301 Supplementary Fig. S11.)

302

303 ***[Figure 7 approximately here]***

304

305 **Discussion**

306 While in the grip of the COVID-19 pandemic in April 2020, the WHO recommended to
307 suspend all epidemiological surveys and MDA activities for NTDs to help curtail the
308 transmission and spread of the SARS-CoV-2 virus.¹ These disruptions to ivermectin MDA
309 created concern in the NTD community regarding potential short-term increases in
310 transmission and impacts on longer-term elimination prospects for onchocerciasis,

311 particularly in the context of the EOT goals proposed by the WHO in its 2021–2030 NTD
312 roadmap.⁵ In response to these concerns, we have used two stochastic onchocerciasis
313 transmission models, EPIONCHO-IBM and ONCHOSIM, to investigate the impact of (1- and
314 2-year) interruptions to MDA in a variety of settings motivated by the epidemiological
315 situation in endemic areas in Africa.

316

317 Generally, the models suggest that programmes with short treatment histories of pre-
318 existing annual MDA (late-start programmes) will be the most vulnerable to a two-year
319 (2020–2021) interruption. Programmes with longer treatment histories (early-start
320 programmes) could also be adversely affected if initial endemicity levels indicate intense
321 (hyperendemic) transmission. The influence of baseline microfilarial prevalence was more
322 pronounced in EPIONCHO-IBM for both early- and late-start MDA programmes than in
323 ONCHOSIM. Although for late-start programmes a 1-year interruption to MDA impacted the
324 elimination probabilities and microfilarial prevalence in 2030, the effect would be more
325 tolerable than for a 2-year interruption; early-start programmes with lower pre-intervention
326 endemicities were mostly unaffected.

327

328 In July 2020, the WHO issued guidelines for the resumption of MDA provided it can be
329 delivered ‘safely’ following a case-by-case risk-benefit assessment, with due consideration
330 of a health system’s capacity to conduct such modified activities effectively in the context of
331 the ongoing COVID-19 pandemic.² Therefore, the implementation of mitigation strategies in
332 the models allowed for a gradual scaling-up of therapeutic coverage once MDA resumes.
333 Both models predict that remedial biannual MDA (in 2024 and 2025, after having
334 demonstrated up-scaling to 65% coverage through 2022 and 2023) would be more effective

335 at controlling increases in infection and decreases in elimination probabilities than remedial
336 high (75%) coverage of annual MDA (also in 2024 and 2025).

337

338 Both models also predicted that pre-existing biannual MDA programmes—which had
339 achieved a high treatment coverage for nearly a decade (in our simulations 75% pre-COVID-
340 19 coverage from 2012 inclusive to reflect a 90% coverage of eligible population)—would
341 not be adversely affected by a 1-year interruption. This was despite assuming a slow start of
342 annual MDA at low coverage (before implementing biannual MDA) to capture initial
343 difficulties in implementing treatment.¹⁷ A 1-year (rather than a 2-year) interruption was
344 explored for these settings because of their pre-COVID-19 strong programmatic
345 performance.¹⁷ It was also assumed that these programmes would be able to resume
346 biannual MDA at the same high coverage they had recorded before the pandemic given
347 their existing structure and commitment to achieve EOT.

348

349 Some West African countries (e.g. Guinea, Liberia, Sierra Leone) had already had their
350 ivermectin MDA programmes interrupted in 2014 due to the Ebola epidemic. We therefore
351 considered this situation, in addition to a 1-year COVID-19 interruption in 2020. Both
352 models predicted that in mesoendemic settings (50% baseline microfilarial prevalence),
353 these two separate 1-year interruptions would not greatly impact on programmes'
354 performance, provided that coverage levels can catch up reasonably quickly following
355 resumption of MDA (50% in 2021 and 65% in 2022 onwards). In hyperendemic and highly
356 hyperendemic settings (60% and 70% baseline microfilarial prevalence) the impact would be
357 more pronounced (particularly according to EPIONCHO-IBM).

358

359 Although programmes measure progress in terms of reducing mean infection prevalence
360 and intensity at population level, favourable infection trends may mask heterogeneities
361 among different population sub-groups. In areas of intense transmission and only recent
362 MDA implementation, which could be exemplified by the situation of the Maridi Dam in
363 South Sudan,²² children may reach their fifth birthday (when they become eligible for
364 ivermectin treatment) with a sizeable microfilarial load. This has been shown to be a
365 significant risk factor for the development of epilepsy later in life,⁹ and could also contribute
366 to increasing the relative risk of mortality, which for a given microfilarial load is higher in
367 children than in adults.²³ In the Maridi villages, Ov-16 serology (a marker of exposure to
368 infection) revealed a 20% (95% CI = 13%–29%) seroprevalence in the 3–6-year-olds.²²
369 Following a 2-year MDA interruption, children may not receive treatment until their 7th
370 birthday, leading to a further microfilarial load build-up. Our modelling results indicate that
371 in late-start (e.g. 2017) and high initial endemicity programmes (e.g. 70% microfilarial
372 prevalence), there might be substantial increases in infection intensity in children aged <10
373 years, particularly according to EPIONCHO-IBM. In addition, both models predict that in
374 these settings, and following a 2-year MDA interruption, there will also be increases in
375 infection prevalence and intensity in older age groups (moderate in EPIONCHO-IBM but
376 pronounced in ONCHOSIM). This increase could lead to exacerbation of other
377 onchocerciasis-associated sequelae, such as troublesome itch, according to epidemiological⁸
378 and modelling studies linking infection and disease.^{24,25} These results are mostly determined
379 by the assumed patterns of age- and sex-dependent exposure to infection, which differ
380 markedly between the two models.²⁶
381

382 Although the models agree qualitatively on the role of treatment history in the outcome of
383 interruptions to ivermectin MDA, and the differences between remedial strategies in
384 mitigating the ensuing setbacks, ONCHOSIM predicts higher elimination probabilities than
385 EPIONCHO-IBM. This is partly because EPIONCHO-IBM assumes strong regulatory processes
386 operating on parasite establishment within humans that are relaxed as transmission
387 declines during interventions, increasing the stability and resilience of the host–parasite
388 system; these processes are not assumed in ONCHOSIM.^{12,26,27} In addition, the
389 aforementioned differences in the assumed age- and sex-specific exposure patterns, and
390 associated age and sex profiles of infection results in ONCHOSIM predicting a lower
391 microfilarial intensity in children under 5, while in EPIONCHO-IBM there exists a larger
392 reservoir of infection in untreated children, which also contributes to lower elimination
393 probabilities.

394

395 An assumption made in most of the modelled scenarios model, is that when MDA resumes
396 coverage will initially be lower than pre-pandemic levels and could take several years to
397 recover. However, the usual drug distribution modality, by which members of the
398 community present at a focal point to receive ivermectin, could be replaced by door-to-door
399 drug distribution (as a result of social distancing measures). Depending on local
400 circumstances, some programmes may achieve well-documented and high coverage levels,
401 although the latter would also rely on well-stocked supply chains.

402

403 We did not consider the potential use of moxidectin and/or vector control as alternative
404 remedial strategies to mitigate the impact of the current pandemic. This is because, while
405 these approaches are very promising,^{28–30} they are currently not operationally implemented

406 by national control programmes. However, where vector control is practicable, it should be
407 considered as a complementary intervention, when it is more conducive than
408 chemotherapeutic approaches to implementation in a socially-distanced manner.²

409

410 **Conclusions and Recommendations**

411 Both EPIONCHO-IBM and ONCHOSIM indicate that ivermectin MDA programmes with
412 shorter treatment histories will be most vulnerable to MDA interruptions caused by the
413 COVID-19 pandemic, particularly if treatment cannot be resumed safely in 2021. This impact
414 may be noticeable in local infection resurgence in higher endemicity settings and may
415 reduce the probability of achieving EOT by 2030. Programmes with longer treatment
416 histories of annual MDA that have achieved and maintained a coverage of 65% are
417 predicted to be less affected (but not totally impervious) to interruptions of ivermectin
418 MDA, particularly if high initial endemicity indicates highly propitious transmission
419 conditions. Young children have the potential to be negatively affected by increased levels
420 of transmission resulting from missed MDA rounds, particularly for a 2-year interruption in
421 highly endemic settings recently incorporated to ivermectin MDA programmes, depending
422 on local age-exposure patterns.

423

424 The impact of COVID-19 on progress towards the WHO 2021–2030 goals is best ameliorated
425 by implementing biannual MDA as soon as pre-COVID-19 levels of therapeutic coverage are
426 restored (in our simulations to 65% of the total population in 2024–2025). This mitigation
427 strategy is indicated as more effective than increasing annual MDA coverage (to 75%).

428

429 MDA programmes should promptly conduct the risk-benefit evaluations indicated by the
430 WHO,^{2,31} so alternative modalities of MDA delivery can be put in place safely and effectively
431 to resume MDA and regain pre-COVID-19 levels of coverage where possible (e.g. door-to-
432 door distribution with household members measuring themselves with disinfected height
433 poles and community drug distributors leaving tablets at the doorstep and observing
434 household members swallowing the tablets with safe social distancing). Additionally, in
435 August 2020, The United States Agency for International Development (USAID) released
436 guidance on how best to implement MDA in the context of COVID-19.³² To complement the
437 WHO and USAID documentation, we offer a decision-making tree to summarise our results
438 and recommendations which we hope will help programme managers to navigate the
439 landscape of ivermectin MDA for onchocerciasis during the ongoing pandemic (Fig. 8).

440

441 ***[Figure 8 approximately here]***

442

443 **Abbreviations**

444 ABR = annual biting rate, APOC = African Programme for Onchocerciasis Control, EOT =
445 elimination of transmission, IBM = individual-based model, MDA = mass drug
446 administration, aMDA = annual mass drug administration, bMDA = biannual mass drug
447 administration, MDP = Mectizan Donation Program, NTD = neglected tropical disease, OCP =
448 Onchocerciasis Control Programme in West Africa, PCT = preventive chemotherapy and
449 transmission control, USAID = United States Agency for International Development, WHO =
450 World Health Organization.

451

452 **Authors contributions**

453 JIDH: Conceptualization, Methodology, Investigation, Formal analysis, Software,

454 Visualization, Writing – original draft, Writing – review & editing

455 DJB: Conceptualization, Formal analysis, Software, Writing – review & editing

456 MW: Conceptualization, Methodology, Supervision, Writing – review & editing

457 PM: Methodology, Writing – review & editing

458 ADH: Conceptualization, Writing – review & editing

459 LCH: Conceptualization, Writing – review & editing

460 PD: Visualization, Writing – review & editing

461 SIdV: Funding acquisition, Supervision, Writing – review & editing

462 WAS: Conceptualization, Supervision, Writing – review & editing

463 MGB: Conceptualization, Methodology, Funding acquisition, Supervision, Visualization,

464 Writing – original draft, Writing – review & editing

465

466 **Funding**

467 This work was supported by the Bill and Melinda Gates Foundation via the NTD Modelling

468 Consortium (grant number OPP1184344); the UK Medical Research Council (MRC Doctoral

469 Training Programme award to PM); MRC and the UK Department for International Development

470 (DFID) Joint Centre Funding under the MRC/DFID Concordat agreement of the European Union

471 and European and Developing Countries Clinical Trials Partnership 2 (grant number

472 MR/R015600/1 (JIDH, PM, MGB).

473

474 **Conflict of interest statement**

475 The authors have no conflicts of interest to disclose.

476

477 **Code availability**

478 The code of EPIONCHO-IBM is available at <https://github.com/jonathanhamley/EPIONCHO->

479 [IBM](#). The code of ONCHOSIM is available at <https://gitlab.com/erasmusmc-public->

480 [health/wormsim.previous.versions/-/blob/master/wormsim-2.58Ap27.zip](#)

481

482 **Description of SI File**

483 Detailed description of modelling methodology and additional results.

484

485 **References**

486 1 World Health Organization. COVID-19: WHO issues interim guidance for implementation
487 of NTD programmes. 1 April 2020.

488 https://www.who.int/neglected_diseases/news/COVID19-WHO-interim-guidance-

489 [implementation-NTD-programmes/en/](#) [accessed 17 October 2020].

490 2 World Health Organization. Considerations for implementing mass treatment, active
491 case-finding and population-based surveys for neglected tropical diseases in the context
492 of the COVID-19 pandemic. Interim guidance. 27 July 2020.

493 <https://www.who.int/publications/i/item/WHO-2019-nCoV-neglected-tropical-diseases->

494 [2020-1](#) [accessed 17 October 2020].

495 3 Parpia AS, Ndeffo-Mbah ML, Wenzel NS, Galvani AP. Effects of response to 2014-2015
496 Ebola outbreak on deaths from malaria, HIV/AIDS, and tuberculosis, West Africa. *Emerg*
497 *Infect Dis* 2016;22(3):433-41.

498 4 Sochas L, Channon AA, Nam S. Counting indirect crisis-related deaths in the context of a
499 low-resilience health system: the case of maternal and neonatal health during the Ebola
500 epidemic in Sierra Leone. *Health Policy Plan* 2017;32(Suppl 3):iii32-iii39.

501 5 World Health Organization. Ending the neglect to attain the Sustainable Development
502 Goals – A road map for neglected tropical diseases 2021–2030.

503 https://www.who.int/neglected_diseases/Ending-the-neglect-to-attain-the-SDGs--NTD-

504 [Roadmap.pdf?ua=1](#) [accessed 18 October 2020].

- 505 6 Molyneux DH, Aboe A, Isiyaku S, Bush S. COVID-19 and neglected tropical diseases in
506 Africa: impacts, interactions, consequences. *Int Health*. 2020;12(5):367-72.
- 507 7 Chaumont C, Kamara K, Baring E, et al. The SARS-CoV-2 crisis and its impact on neglected
508 tropical diseases: Threat or opportunity? *PLoS Negl Trop Dis* 2020;14(9):e0008680.
- 509 8 Brieger WR, Awedoba AK, Eneanya CI, et al. The effects of ivermectin on onchocercal
510 skin disease and severe itching: results of a multicentre trial. *Trop Med Int Health* 1998;
511 3(12):951-61.
- 512 9 Chesnais CB, Nana-Djeunga HC, Njamnshi AK, et al. The temporal relationship between
513 onchocerciasis and epilepsy: a population-based cohort study. *Lancet Infect Dis* 2018;
514 18(11):1278-86.
- 515 10 NTD Modelling Consortium Onchocerciasis Group. The World Health Organization 2030
516 goals for onchocerciasis: Insights and perspectives from mathematical modelling. *Gates*
517 *Open Res* 2019;3:1545.
- 518 11 NTD Modelling Consortium. The potential impact of programmes interruptions due to
519 COVID-19 on 7 neglected tropical diseases: a modelling-based analysis.
520 <https://gatesopenresearch.org/documents/4-115> [accessed 18 October 2020].
- 521 12 Hamley JID, Milton P, Walker M, Basáñez MG. Modelling exposure heterogeneity and
522 density dependence in onchocerciasis using a novel individual-based transmission
523 model, EPIONCHO-IBM: Implications for elimination and data needs. *PLoS Negl Trop Dis*
524 2019;13(12):e0007557.
- 525 13 Coffeng LE, Stolk WA, Hoerauf A, et al. Elimination of African onchocerciasis: modeling
526 the impact of increasing the frequency of ivermectin mass treatment. *PLoS One*
527 2014;9(12):e115886.
- 528 14 Behrend MR, Basáñez MG, Hamley JID, et al. Modelling for policy: The five principles of
529 the Neglected Tropical Diseases Modelling Consortium. *PLoS Negl Trop Dis* 2020;14(4):
530 e0008033.
- 531 15 Boatin B. The Onchocerciasis Control Programme in West Africa (OCP). *Ann Trop Med*
532 *Parasitol* 2008;102(Suppl 1):13-7.
- 533 16 Tekle AH, Zouré HG, Noma M, et al. Progress towards onchocerciasis elimination in the
534 participating countries of the African Programme for Onchocerciasis Control:
535 epidemiological evaluation results. *Infect Dis Poverty* 2016;5(1):66.

- 536 17 Katarbarwa MN, Lakwo T, Habomugisha P, et al. After 70 years of fighting an age-old
537 scourge, onchocerciasis in Uganda, the end is in sight. *Int Health* 2018;10(Suppl
538 1):i79–i88.
- 539 18 Carter Center, Ministry of Health Uganda. Insight Special 2011. Proceedings of Uganda
540 Onchocerciasis Elimination Expert Advisory Committee. 4th Session, 15–17 August 2011,
541 Kampala, Uganda.
542 [https://mhjapply.cartercenter.org/resources/pdfs/news/health_publications/river_blind](https://mhjapply.cartercenter.org/resources/pdfs/news/health_publications/river_blindness/insight-special-newsletter-2011.pdf)
543 [ness/insight-special-newsletter-2011.pdf](https://mhjapply.cartercenter.org/resources/pdfs/news/health_publications/river_blindness/insight-special-newsletter-2011.pdf) [accessed 18 October 2020].
- 544 19 Hodges ME, Koroma JB, Sonnie M, et al. Neglected tropical disease control in post-war
545 Sierra Leone using the Onchocerciasis Control Programme as a platform. *Int Health*
546 2011;3(2):69–74.
- 547 20 Thomas BC, Kollie K, Koudou B, Mackenzie C. Restarting NTD programme activities after
548 the Ebola outbreak in Liberia. *Infect Dis Poverty*. 2017;6(1):52.
- 549 21 Koroma JB, Sesay S, Conteh A, et al. Impact of five annual rounds of mass drug
550 administration with ivermectin on onchocerciasis in Sierra Leone. *Infect Dis Poverty*
551 2018;7(1):30.
- 552 22 Lakwo TL, Raimon S, Tionga M, et al. The role of the Maridi Dam in causing an
553 onchocerciasis-associated epilepsy epidemic in Maridi, South Sudan: An epidemiological,
554 sociological, and entomological study. *Pathogens* 2020;9(4):315.
- 555 23 Walker M, Little MP, Wagner KS, et al. Density-dependent mortality of the human host
556 in onchocerciasis: relationships between microfilarial load and excess mortality. *PLoS*
557 *Negl Trop Dis* 2012;6(3):e1578.
- 558 24 Coffeng LE, Stolk WA, Zouré HG, et al. African Programme for Onchocerciasis Control
559 1995-2015: model-estimated health impact and cost. *PLoS Negl Trop Dis* 2013;7(1):
560 e2032.
- 561 25 Turner HC, Walker M, Churcher TS, Basáñez MG. Modelling the impact of ivermectin on
562 River Blindness and its burden of morbidity and mortality in African Savannah: EpiOncho
563 projections. *Parasit Vectors* 2014;7:241.
- 564 26 Basáñez MG, Walker M, Turner HC, et al. River blindness: Mathematical models for
565 control and elimination. *Adv Parasitol* 2016;94:247–341.
- 566 27 Hamley JID, Walker M, Coffeng LE, et al. Structural uncertainty in onchocerciasis
567 transmission models influences the estimation of elimination thresholds and selection of
568 age groups for seromonitoring. *J Infect Dis* 2020;221(Suppl 5):S510–S518.

- 569 28 Milton P, Hamley JID, Walker M, Basáñez MG. Moxidectin: an oral treatment for human
570 onchocerciasis. *Expert Rev Anti Infect Ther* 2020; Jul 26:1-15 (Online ahead of print).
- 571 29 Jacob BG, Loum D, Lakwo TL, et al. Community-directed vector control to supplement
572 mass drug distribution for onchocerciasis elimination in the Madi mid-North focus of
573 Northern Uganda. *PLoS Negl Trop Dis* 2018;12(8):e0006702.
- 574 30 Katarwa MN, Habomugisha P, Khainza A, et al. Elimination of *Simulium neavei*-
575 transmitted onchocerciasis in Wambabya-Rwamarongo focus of Western Uganda. *Am J*
576 *Trop Med Hyg* 2020;103(3):1135–42.
- 577 31 World Health Organization. Rapid risk assessment of acute public health events. 2012.
578 https://www.who.int/csr/resources/publications/HSE_GAR_ARO_2012_1/en/ [accessed
579 18 October 2020].
- 580 32 United States Agency for International Development, Act to End NTDs East, Act to End
581 NTDs West. Practical approaches to implementing WHO guidance for neglected tropical
582 disease (NTD) programs in the context of COVID-19: Mass drug administration (MDA).
583 2020. [https://www.ntdtoolbox.org/toolbox-search/practical-approaches-implementing-
584 who-guidance-neglected-tropical-disease-ntd](https://www.ntdtoolbox.org/toolbox-search/practical-approaches-implementing-who-guidance-neglected-tropical-disease-ntd) [accessed 18 October 2020].
- 585
- 586

587 **Figure Legends**

588 **Figure 1. Temporal dynamics of *Onchocerca volvulus* microfilarial (Mf) prevalence**

589 **assuming a 1-year (2020) and 2-year (2020–2021) interruption to annual mass drug**

590 **administration (MDA) with ivermectin due to COVID-19 and no mitigation strategies,**

591 **predicted by EPIONCHO-IBM (A-D) and ONCHOSIM (E-H).**

592 The pre-intervention (baseline) microfilarial prevalence in individuals aged ≥ 5 years is 50%

593 (A, C, E, G), and 70% (B, D, F, H). Annual MDA occurs from 2000 to 2030 (early-start

594 programmes, A, B, E, F) or from 2017 to 2030 (late-start programmes, C, D, G, H), assuming

595 no treatment in 2020 only (red lines), no treatment in both 2020 and 2021 (violet lines), and

596 no remedial strategies subsequently. The temporal microfilarial dynamics with no

597 interruption to MDA are shown as green lines. The therapeutic coverage (of total

598 population) is assumed to be 65%, with the exception of 30% in 2021 following a 1-year

599 interruption and 30% in 2022 following a 2-year interruption to MDA. The proportion of

600 systematic non-participation is set to 5% throughout all simulations.

601

602 **Figure 2. Elimination probabilities versus pre-intervention (baseline) endemicity (pre-**

603 **treatment microfilarial prevalence) predicted by (A) EPIONCHO-IBM and (B) ONCHOSIM**

604 **for early-start and late-start annual mass drug administration (MDA) with ivermectin with**

605 **and without a 2-year (2020 and 2021) MDA interruption due to COVID-19 and no**

606 **mitigation strategies.** Annual MDA programmes start in 2000 (early-start, black lines) or

607 2017 (late-start, grey lines) and finish in 2030. Although in the African Programme for

608 Onchocerciasis Control MDA treatment was prioritised for areas with microfilarial

609 prevalence $\geq 40\%$, the range of baseline microfilarial prevalence in individuals aged ≥ 5 years

610 explored is 20% – 85% for the sake of completeness. No interruption to MDA is represented
611 by solid lines; a 2-year interruption is represented by dashed lines. The therapeutic coverage
612 (of total population) is assumed to be 65%, with the exception of 30% in 2022. The
613 proportion of systematic non-participation is set to 5% throughout all simulations.

614 **Figure 3. Temporal dynamics of *Onchocerca volvulus* microfilarial (Mf) prevalence**
615 **predicted by EPIONCHO-IBM (A – C) and ONCHOSIM (D – F) with a 2-year (2020 and 2021)**
616 **interruption due to COVID-19 of mass drug administration (MDA) with ivermectin (2017 –**
617 **2030) and remedial biannual MDA.** The pre-intervention (baseline) microfilarial prevalence
618 (in individuals aged ≥ 5 years) is: 50% (A, D), 60% (B, E), and 70% (C, F). Grey lines represent
619 no interruption to MDA; black lines indicate no treatment in 2020 and 2021 but with two
620 years of remedial biannual MDA in 2024 and 2025. The therapeutic coverage (of total
621 population) is assumed to be 65%, with the exception of 30% in 2022. The proportion of
622 systematic non-participation is set to 5% throughout all simulations.

623 **Figure 4. Temporal dynamics of *Onchocerca volvulus* microfilarial (Mf) prevalence**
624 **predicted by EPIONCHO-IBM (A–C) and ONCHOSIM (D–F) with a 2-year (2020 and 2021)**
625 **interruption due to COVID-19 of annual mass drug administration (MDA) with ivermectin**
626 **(2017–2030) and remedial annual high-coverage MDA.** The pre-intervention (baseline)
627 microfilarial prevalence (in individuals aged ≥ 5 years) is: 50% (A, D), 60% (B, E), and 70% (C,
628 F). Grey lines represent no interruption to MDA; black lines indicate no treatment in 2020
629 and 2021 but with two years of remedial high-coverage MDA in 2024 and 2025. The
630 therapeutic coverage (of total population) is assumed to be 65%, with the exception of 30%
631 in 2022, 75% in 2024 and 75% in 2025. The proportion of systematic non-participation is set
632 to 5% throughout all simulations.

633 **Figure 5. Temporal dynamics of *Onchocerca volvulus* microfilarial (Mf) prevalence**
634 **predicted by EPIONCHO-IBM (A) and ONCHOSIM (B) in programmes with pre-existing**
635 **biannual mass drug administration (MDA) with ivermectin and a 1-year interruption**
636 **(2020) due to COVID-19.** Annual MDA assumes low (25%) therapeutic coverage (of total
637 population) from 1994 to 2011 and high (75%) biannual coverage (of total population) from
638 2012 to 2019 (motivated by the Madi-Mid North focus in Uganda, where the main vector is
639 *Simulium damnosum sensu stricto*), with a 50% pre-intervention (baseline) microfilarial
640 prevalence (in individuals aged ≥ 5 years). Following resumption of MDA in 2021, coverage
641 (of total population) is assumed to reach 75% (same as pre-interruption). Black lines indicate
642 individual simulations. Green lines indicate the mean of all simulations. The proportion of
643 systematic non-participation is set to 5% throughout all simulations.

644 **Figure 6. Temporal dynamics of *Onchocerca volvulus* microfilarial (Mf) prevalence**
645 **predicted by EPIONCHO-IBM (A, B, C) and ONCHOSIM (D, E, F) during annual mass drug**
646 **administration (MDA) with ivermectin, assuming a 1-year interruption (2014) due to the**
647 **Ebola epidemic in West Africa, a 1-year interruption due to COVID-19 in 2020 and no**
648 **remedial strategies.** The pre-intervention (baseline) microfilarial prevalence in individuals
649 aged ≥ 5 years is 50% (A, D), 60% (B, E) and 70% (C, F). The therapeutic coverage (of total
650 population) is assumed to be 25% in 2003 and 2004, 30% in 2005 and 2006, 50% in 2007
651 and 2008, 65% in 2009 and 2012, 30% in 2015 and 65% from 2016 onwards (motivated by
652 the situation in West African countries that had experienced civil conflict and were affected
653 by the Ebola epidemic), with the exception of 2021 (50%). Black and grey lines indicate,
654 respectively, the microfilarial dynamics with and without an interruption due to COVID-19.
655 The proportion of systematic non-participation is set to 5% throughout all simulations.

656 **Figure 7: Age- and sex-profiles of *Onchocerca volvulus* microfilarial (Mf) prevalence**
657 **(percent, A – D) and mean intensity (mf/skin snip, E – H) predicted by EPIONCHO-IBM (A,**
658 **B, E, F) and ONCHOSIM (C, D, G, H) assuming no interruption to mass drug administration**
659 **(MDA) with ivermectin (A, C, E, G) and a 2-year interruption to MDA in 2020 and 2021 (B,**
660 **D, F, H) due to COVID-19.** The pre-intervention (baseline) microfilarial prevalence is 70% in
661 individuals aged ≥ 5 years and the age-profiles for prevalence (A, C) and intensity (E, G) at
662 baseline are shown in the figure insets. Annual MDA starts in 2017 and the profiles (solid
663 lines for males and dashed lines for females) are shown for 2022 (black), 2023 (violet), 2024
664 (purple), 2025 (red) and 2026 (yellow). The therapeutic coverage (of total population) is
665 assumed to be 65%, with the exception of 30% in 2022 (B, D, F, H). The proportion of
666 systematic non-participation is set to 5% throughout all simulations.

667 **Figure 8. Decision tree for implementing ivermectin MDA following a 1- or 2-year**
668 **interruption to treatment programmes as a result of COVID-19.** COVID-19 risk assessment
669 conducted but risk deemed too high to safely implement MDA is represented by the red
670 box, in which case MDA is postponed until subsequent risk assessments allow treatment
671 activities to recommence. COVID-19 risk assessment conducted and deemed that MDA can
672 resume safely is represented by the green box. MDA strategy upon resumption is based on
673 duration of interruption, baseline prevalence, and treatment history. MDA interruption (or
674 missed MDA) is defined as no MDA in the period specified, i.e. 1 year (≥ 12 months since the
675 last round of MDA) or 2 years (≥ 24 months since the last round of MDA). One year of missed
676 annual MDA followed by a remedial biannual round in the following year can be interpreted
677 as delayed MDA. Pre-interruption coverage assumes that before COVID-19 programmes had
678 reached the minimum effective coverage of 65% of total population and that this value will

679 be reached following resumption of MDA. Early MDA start = programmes starting MDA in
680 2000; late MDA start = programmes commencing MDA in 2017 (these start times were
681 selected as they are at the two extremes of the treatment durations simulated); aMDA =
682 annual MDA; bMDA = biannual MDA; MDA+ = MDA implemented following World Health
683 Organization guidelines for minimising the risk of COVID-19 transmission.^{2,31}

Figures

Fig. 1

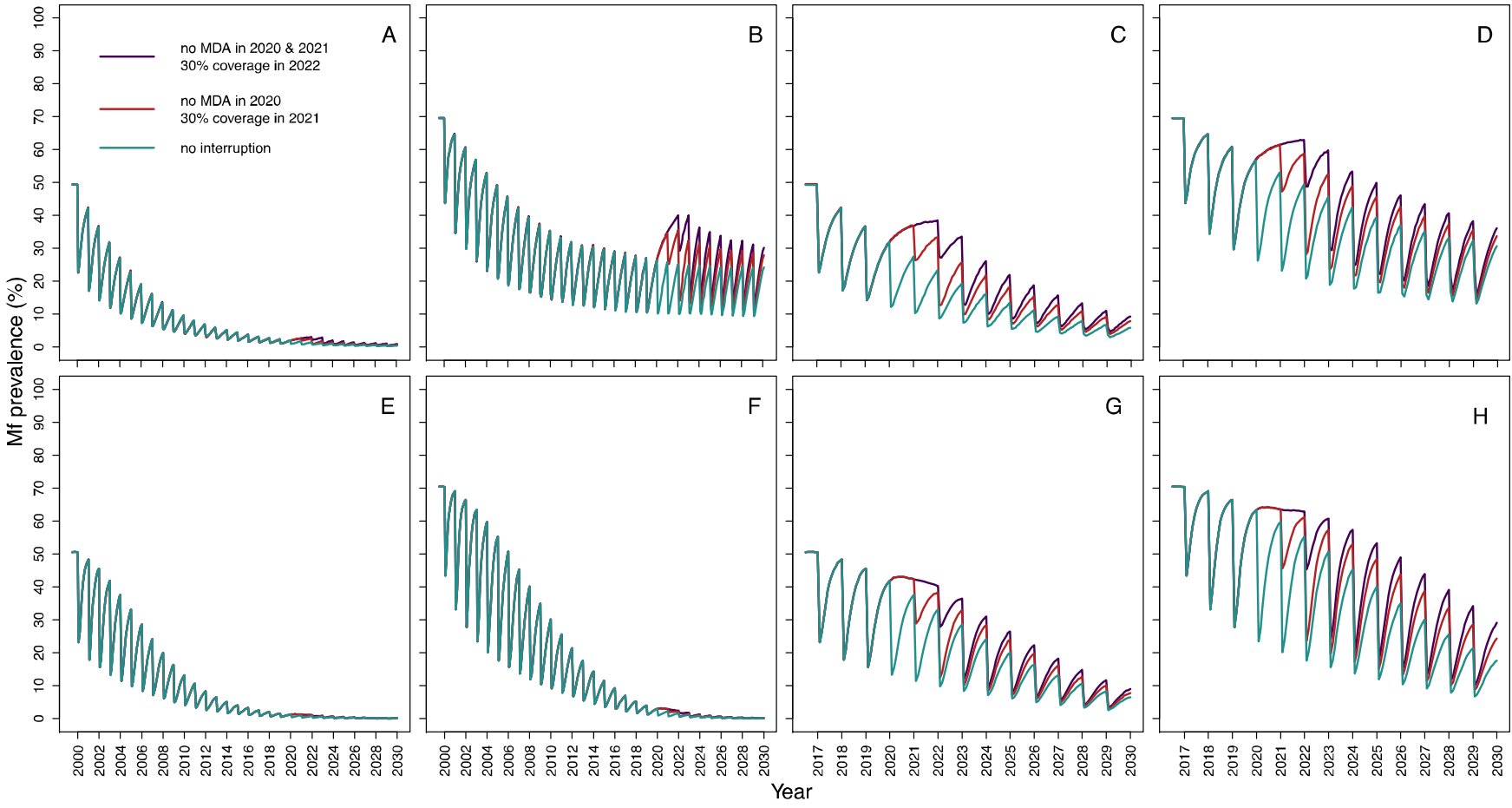


Fig. 2

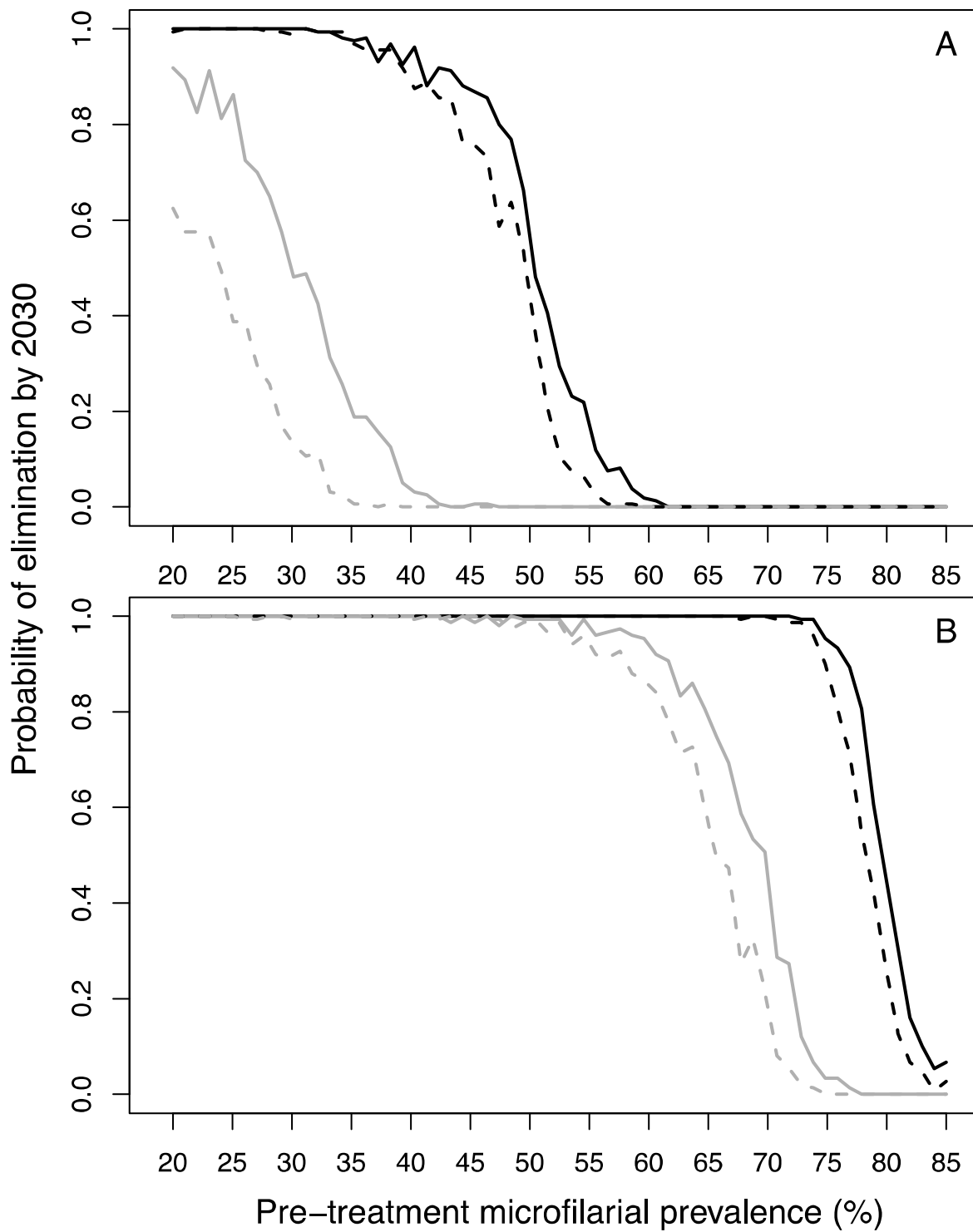


Fig. 3

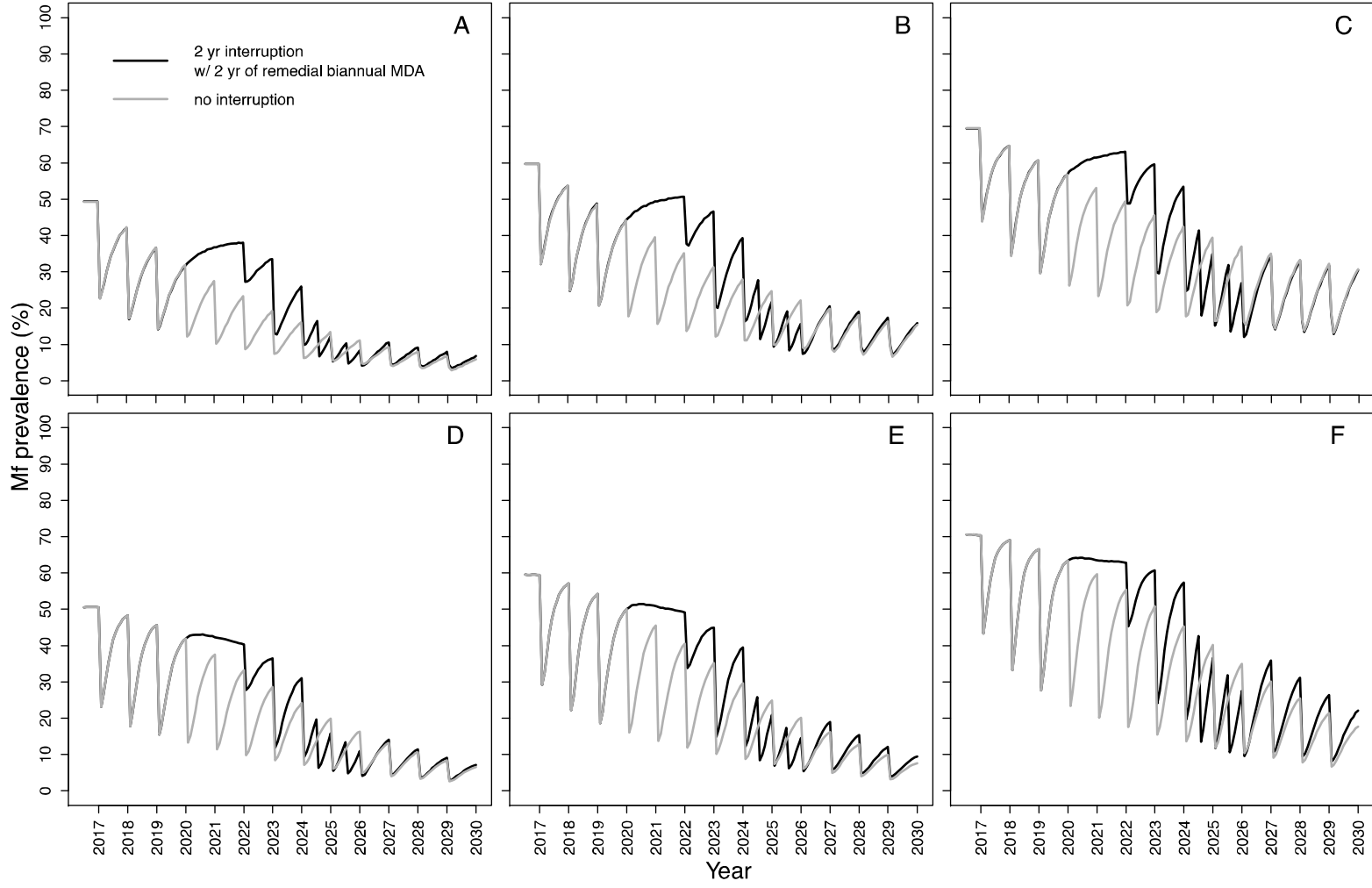


Fig. 4

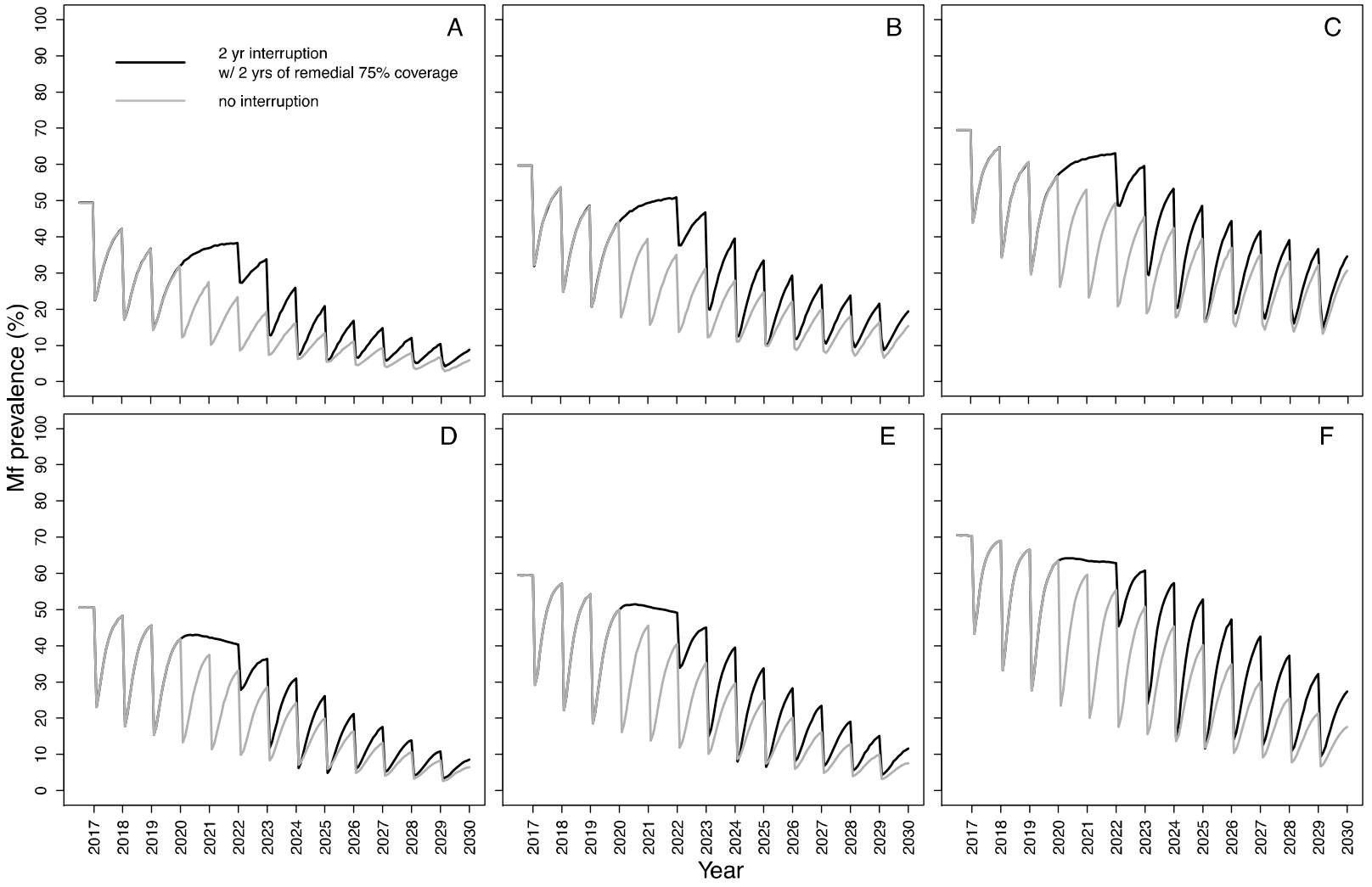


Fig. 5

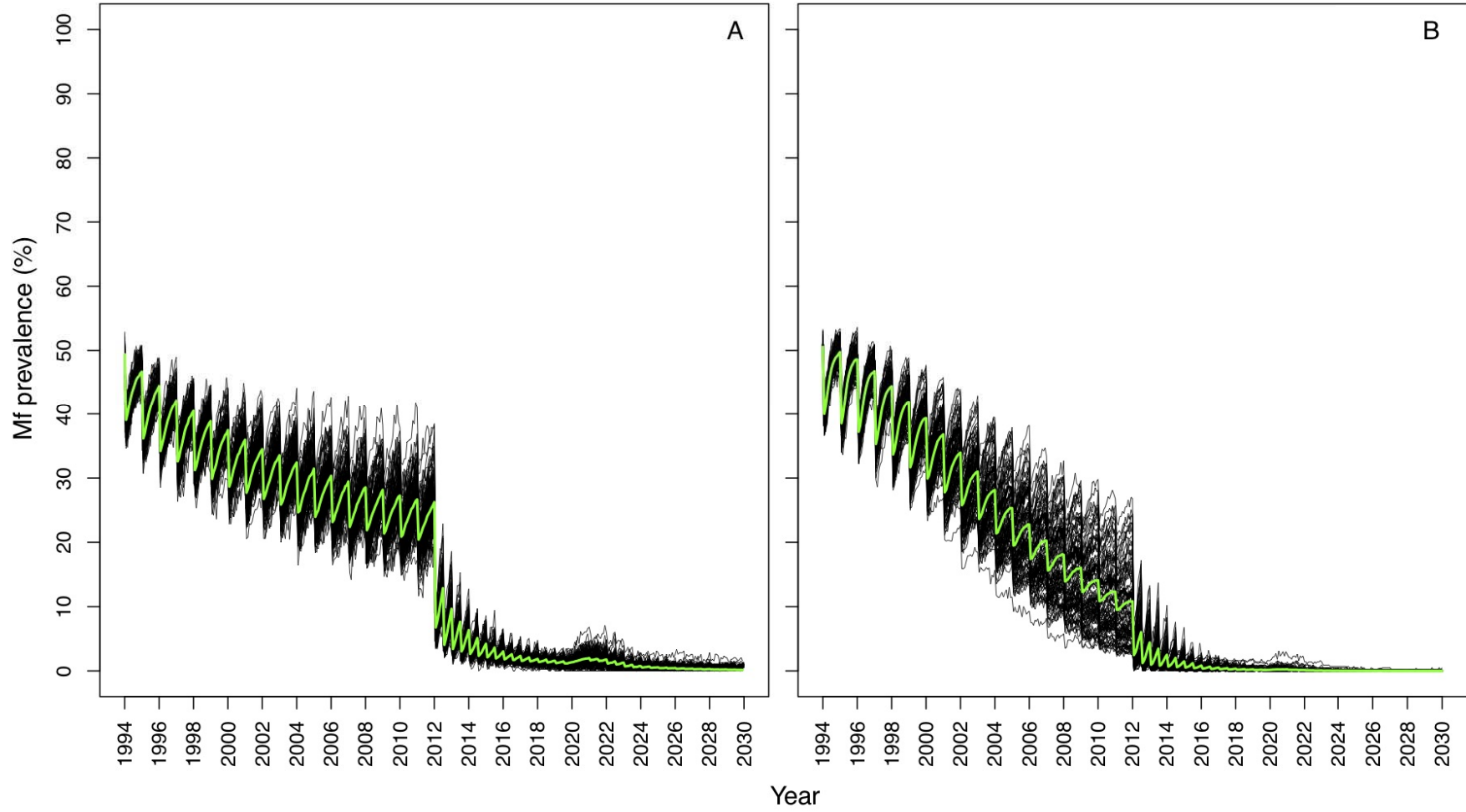


Fig. 6

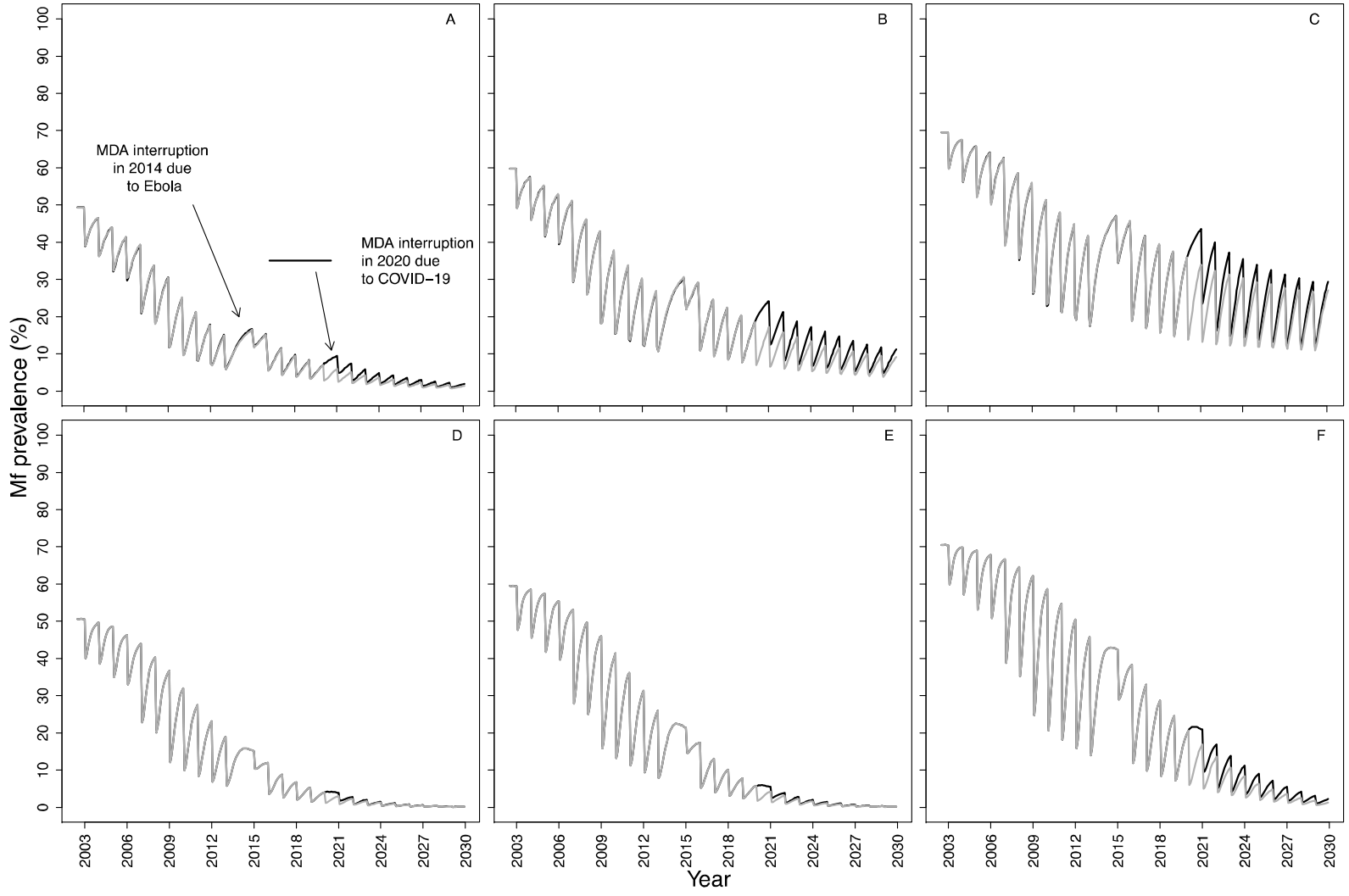


Fig. 7

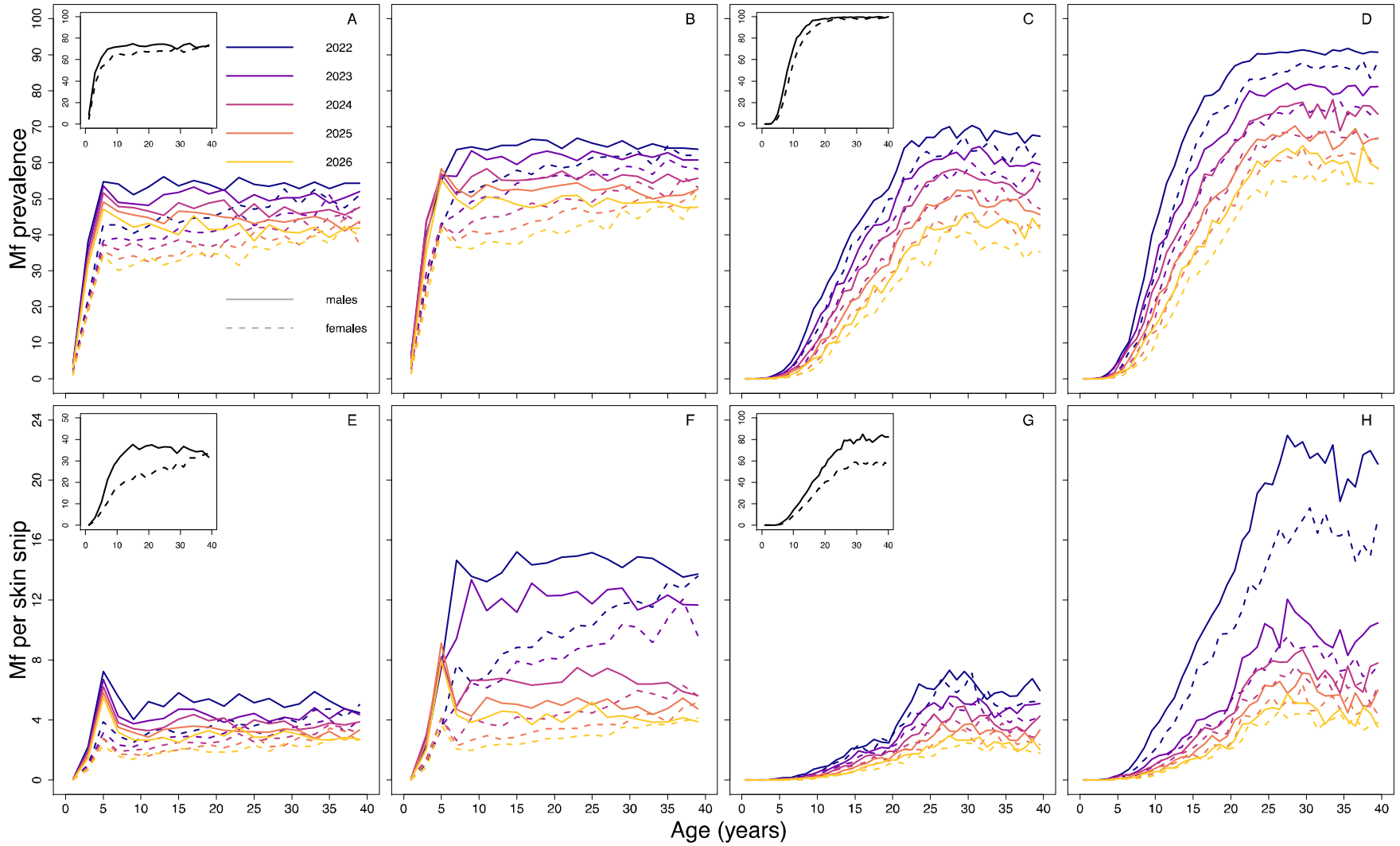


Fig. 8

