

1 **Characterization of *Mycobacterium tuberculosis*-specific Th22 cells and the effect of**
2 **tuberculosis disease and HIV co-infection**

3

4 Mohau S. Makatsa*, F. Millicent A. Omondi*, Rubina Bunjun*, Robert J. Wilkinson^{†,‡,§,¶} Catherine
5 Riou^{*,†,‡,1} and Wendy A. Burgers^{*,†,‡,1}

6

7 *Division of Medical Virology, Department of Pathology, Faculty of Health Sciences, [†]Wellcome

8 Centre for Infectious Diseases Research in Africa and [‡]Institute of Infectious Disease and

9 Molecular Medicine, University of Cape Town, 7925, Cape Town, South Africa,

10 [§]Department of Medicine, Imperial College London, W21PG, London, UK and [¶]Francis Crick
11 Institute Mill Hill laboratory, NW71AA, London, UK.

12

13 ¹C.R. and W.A.B. contributed equally to this work.

14 **Corresponding author:** Wendy Burgers, Institute of Infectious Disease and Molecular Medicine,
15 University of Cape Town, Falmouth Building, Room 3.36.1, Observatory 7925, South Africa.

16 Phone: +27 21 406 6090, e-mail: wendy.burgers@uct.ac.za

17

18 **Manuscript information:**

19 Running title: Mtb-specific Th22 cells in HIV-TB co-infection (41/60 characters)

20 Abstract: 248 words; Figures: 6; Table: 1; Supplementary Figures: 2.

21

22 **ABSTRACT**

23 The development of a highly effective tuberculosis (TB) vaccine is likely dependent on our
24 understanding of what constitutes a protective immune response to TB. Accumulating evidence
25 suggests that CD4⁺ T cells producing IL-22, a distinct subset termed ‘Th22’ cells, may contribute
26 to protective immunity to TB. Thus, we characterized *Mycobacterium tuberculosis* (Mtb)-specific
27 Th22 (and Th1 and Th17) cells in 72 individuals with latent tuberculosis infection (LTBI) or TB
28 disease, with and without human immunodeficiency virus (HIV)-1 infection. We investigated the
29 functional properties (IFN- γ , IL-22 and IL-17 production), memory differentiation (CD45RA,
30 CD27 and CCR7) and activation profile (HLA-DR) of Mtb-specific CD4⁺ T cells. In HIV-
31 uninfected individuals with LTBI, we detected abundant IFN- γ producing CD4⁺ T cells (median:
32 0.93%) and IL-22-producing CD4⁺ T cells (median: 0.46%) in response to Mtb. The frequency of
33 IL-17 producing CD4⁺ T cells was much lower, at a median of 0.06%. Consistent with previous
34 studies, IL-22 was produced by a distinct subset of CD4⁺ T cells and not co-expressed with IL-17.
35 Mtb-specific IL-22 responses were markedly reduced (median: 0.08%) in individuals with TB
36 disease and HIV co-infection compared to IFN- γ responses. Mtb-specific Th22 cells exhibited a
37 distinct memory and activation phenotype compared to Th1 and Th17 cells. Furthermore, Mtb-
38 specific IL-22 was produced by conventional CD4⁺ T cells that required T cell receptor (TCR)
39 engagement. In conclusion, we confirm that Th22 cells contribute substantially to the immune
40 response to TB. Depletion of Mtb-specific Th22 cells during HIV co-infection may contribute to
41 increased risk of TB disease.

42 INTRODUCTION

43 Tuberculosis (TB) is the leading cause of death from an infectious disease worldwide, with 10
44 million TB cases per year and 1.6 million deaths in 2018 (1). South Africa is one of the eight
45 countries that together account for two thirds of all TB cases globally (1). Moreover, approximately
46 one quarter of the world's population is latently infected with *Mycobacterium tuberculosis* (Mtb)
47 (1). In immunocompetent individuals, the risk of progression from infection to active TB disease is
48 2–10% in a lifetime, illustrating that the human immune system can control Mtb in most cases (2).
49 Bacillus Calmette-Guérin (BCG) is the only licensed TB vaccine and protects against disseminated
50 TB in children but provides variable protection against highly prevalent pulmonary tuberculosis
51 (PTB) in adults (3, 4). Therefore, there is an urgent need for new and effective TB vaccines, and
52 recent progress in clinical and pre-clinical trials have delivered promising results (5–7).

53

54 A better understanding of the immune responses required to control Mtb will aid the
55 development of improved vaccines against TB (8). It is well established that CD4⁺ T cells,
56 particularly Th1 cells producing the cytokines IFN- γ and TNF- α , are critical for immunity against
57 Mtb (8, 9). However, Th1 immunity alone is not sufficient, as IFN- γ has been reported to be a poor
58 correlate of BCG vaccination-induced protection against TB in mice (10, 11). Furthermore, IFN- γ -
59 independent mechanisms of CD4⁺ T cell mediated control of Mtb infection have been documented
60 (12–14). Thus, other CD4⁺ T helper subsets beyond Th1 cells may be essential for protection
61 against TB.

62

63 There is growing interest in the cytokine IL-22 and its role in TB immunity. IL-22 belongs
64 to the IL-10 family of cytokines and its receptor is composed of two heterodimeric subunits, IL-
65 22R1 and IL-10R2 (15). IL-22 mainly targets non-hematopoietic cells, namely epithelial cells, and

66 fibroblasts in tissues (15), but expression of the IL-22 receptor has also been reported on
67 macrophages (16, 17). IL-22 promotes tissue proliferation, regeneration, and healing (15-20). It
68 induces the production of antimicrobial peptides and proteins such as β -defensins, the S100 family
69 of peptides, Reg3, calprotectin and calgranulin A (18–20). Furthermore, IL-22 signaling regulates
70 chemokine expression to orchestrate the recruitment of immune cell subsets to sites of infection (20,
71 21). During infection with Mtb, IL-22 was initially reported to be dispensable for Mtb control in
72 mouse models (22, 23). Recently, however, a protective role for IL-22 in TB immunity was
73 described in a murine model, where IL-22 deficient mice displayed greater bacterial burdens after
74 aerosol infection with a virulent clinical strain of Mtb, HN878 (17). In humans, soluble IL-22 has
75 been detected at sites of extra-pulmonary tuberculosis (24), and a higher concentration of IL-22 was
76 observed in bronchoalveolar lavage fluid (BALF) of individuals with active TB compared to
77 healthy donors (25). Moreover, IL-22 has been shown to inhibit intracellular *M. tuberculosis*
78 growth in macrophages (16), and a polymorphism in the IL-22 promoter has been linked to
79 increased TB risk (26).

80

81 IL-22 is produced by a variety of cells, including T cells (Th17, Th1 and $\gamma\delta$ T cells) and
82 innate cells (innate lymphoid cells (ILCs) and NK cells) (16, 27, 28). In humans, IL-22 is mainly
83 produced by a distinct subset of CD4⁺ T cells, named Th22 cells (29, 30). Our laboratory recently
84 showed that IL-22-producing CD4⁺ T cells contribute to the mycobacterial response during latent
85 TB infection (LTBI) (31). These mycobacteria-specific Th22 cells were depleted during HIV
86 infection to a similar extent as Th1 cells, emphasizing their potential importance in protective
87 immunity to TB in the context of HIV. In the present study, we further characterized Mtb-specific
88 Th22 cells during TB disease and HIV co-infection. This study investigated the contribution of
89 Th22 cells to TB immunity, characterized Th22 cells further to gain insights into their function, and

90 examine the impact of TB disease and HIV infection on Th22 cells, in comparison to Th1 and Th17
91 cells. Our findings confirm that IL-22 is produced by CD4⁺ T cells in response to Mtb antigens, and
92 these Th22 cells contribute substantially to Mtb immune responses. Moreover, Mtb-specific Th22
93 cells were severely diminished in patients with both HIV infection and TB disease. Additionally,
94 we demonstrate for the first time that IL-22 production is dependent on TCR engagement but may
95 require alternative co-stimulatory molecules or antigen presenting cells.

96

97 **MATERIAL AND METHODS**

98 *Study participants*

99 Blood samples were collected from 72 individuals recruited from the Ubuntu Clinic, Khayelitsha,
100 Cape Town, South Africa. Participants were classified into four groups according to their HIV-1
101 infection status and whether they had latent TB infection (LTBI) or active TB disease (aTB): HIV-/
102 LTBI ($n = 19$), HIV+/LTBI ($n = 18$), HIV-/aTB ($n = 19$), and HIV+/aTB ($n = 16$). The clinical
103 characteristics for each group are presented in **Table 1**. LTBI was diagnosed based on a positive
104 IFN- γ release assay (QuantiFERON[®]-TB Gold In-Tube), no symptoms of aTB and no detection of
105 Mtb in sputum by GeneXpert. Diagnosis of aTB was based on clinical symptoms and positive
106 sputum test (GeneXpert). All HIV-infected individuals were antiretroviral treatment (ART) naïve
107 and all TB cases were drug sensitive and TB treatment-naïve at the time of enrolment. In addition to
108 the patient cohort, healthy adult donors were recruited from the University of Cape Town for
109 selected experiments. All participants gave written, informed consent. These studies were approved
110 by the University of Cape Town, Faculty of Health Sciences Human Research Ethics Committee
111 (HREC 279/2012 and HREC 896/2014).

112

113 *Blood collection and whole blood stimulation*

114 Blood was collected in sodium heparin tubes and processed within 4 hours of collection. Whole
115 blood assays were performed according the protocol described previously (32). Briefly, 0.5 ml of
116 heparinized whole blood was stimulated with Mtb cell lysate (strain H37Rv, 10 µg/ml, BEI
117 Resources), a Mtb-specific peptide pool consisting of 17 and 16 peptides covering the entire ESAT-
118 6 (early secretory antigenic target-6) and CFP-10 (culture filtrate protein-10), respectively (4
119 µg/ml), bacillus Calmette-Guerin (BCG) (MOI of 4, *Mycobacterium bovis* Danish strain 1331, SSI
120 or gamma-irradiated Mtb whole cells (Strain H37Rv, 600 µg/ml, BEI Resources) at 37°C for a total
121 of 12 h in the presence of the co-stimulatory antibodies anti-CD28 and anti-CD49d (1 µg /ml each;
122 BD Biosciences). Unstimulated cells were incubated with co-stimulatory antibodies only. After 7 h,
123 Brefeldin A (10 µg/ml; Sigma-Aldrich) was added. Red blood cells were lysed with Alternative
124 Lysing Solution (ALS: 150 mM NH₄Cl, 10 mM KHCO₃, 1 mM Na₄EDTA), and the cell pellet was
125 subsequently stained with LIVE/DEAD™ Fixable Violet Stain (Molecular Probes) or LIVE/DEAD
126 Fixable Near-IR Stain (Invitrogen). Cells were then fixed using FACS lysing solution (BD
127 Biosciences) and cryopreserved in FCS containing 10% dimethyl sulfoxide (DMSO) for batch
128 staining. For lymphocyte-specific protein tyrosine kinase (Lck) inhibition, whole blood from
129 healthy individuals was incubated with increasing concentrations (1 µM to 60 µM) of Lck inhibitor
130 (7-cyclopentyl-5-(4-phenoxyphenyl)-7H-pyrrolo[2,3-d] pyrimidin-4-ylamine, Sigma) for 30 min
131 prior to cell stimulation.

132

133 *Intracellular Cytokine Staining and Flow Cytometry*

134 Cryopreserved cells were thawed, washed and then permeabilized with Perm/Wash buffer (BD
135 Biosciences). Cells were incubated at 4°C for 1 h with the following antibodies: CD19 Pacific Blue
136 (6D5; Biolegend), CD14 Pacific Blue (M5E2; Biolegend), CD3 BV650 (OKT3; BD Biosciences),
137 CD4 PerCP-Cy5.5 (L200; BD Biosciences), CD45RA BV570 (HI100; Biolegend), CD27 PE-Cy5

138 (1A4CD27; Beckman Coulter), CCR7 PECF594 (3D12; BD Biosciences), HLA-DR APC-Cy7
139 (L243; BD Biosciences), IFN- γ Alexa700 (B27; BD Biosciences), IL-17 Alexa 647 (N49-653; BD
140 Biosciences), IL-22 PE (22URTI; e-Bioscience). In order to investigate which T cells produce IL-
141 22 and IFN- γ , the following antibodies were used for surface and intracellular staining: CD3 BV650
142 (OKT3; BD Biosciences), CD4 ECD (T4; Beckman Coulter), CD8 QD705 (3B5; Life
143 Technologies), CD56 PE-Cy7 (NCAM 16.2; BD Biosciences), Pan $\gamma\delta$ PE (IMMU510; Beckman
144 Coulter), CD161 Alexa 647 (HP-3G10; eBioscience), V α 7.2 BV510 (3C10; Biolegend), IFN- γ
145 Alexa700 (B27; BD Biosciences), IL-22 BV421 (22URTI; eBioscience). Stained cells were
146 acquired on a BD Fortessa and analyzed using FlowJo (v10, TreeStar). A positive cytokine
147 response was defined as at least twice the background cytokine response from unstimulated cells.
148 To define the phenotype of cytokine-producing cells, a cutoff of 20 cytokine events was used. The
149 gating strategy applied is presented in **Supplemental Figure S1**.

150

151 *Determining the TCR V β repertoire of cytokine+ cells*

152 The IOTest® Beta Mark TCR V β Repertoire Kit (Beckman Coulter) was used to determine the
153 TCR V β repertoire of Mtb-specific IFN- γ or IL-22-producing CD4+ T cells. Briefly, cells from Mtb
154 lysate- stimulated whole blood were stained with CD3 BV650 (OKT3; BD Biosciences), CD4
155 PerCP-Cy5.5 (L200; BD Biosciences), IFN- γ Alexa700 (B27; BD Biosciences), IL-22 APC
156 (22JOP; eBioscience) and each of the eight vials containing mixtures of conjugated TCR V β
157 antibodies corresponding to 24 different specificities.

158

159 *Statistical analysis*

160 All statistical tests were performed using Prism (v6; GraphPad). Nonparametric tests were used for
161 all comparisons. The Kruskal-Wallis test with Dunn's Multiple Comparison test was used for

162 multiple comparisons and the Mann–Whitney U test and Wilcoxon matched pairs test were used for
163 unmatched and paired samples, respectively. A p value of < 0.05 was considered statistically
164 significant.

165

166 **RESULTS**

167 *Characterization of CD4 Th22 cells in the immune response to Mtb in HIV-/LTBI individuals*

168 A subset of CD4+ T cells that produces the cytokine IL-22 in response to mycobacterial antigen
169 stimulation has been described (29-31). We sought to further characterize Mtb-specific IL-22
170 production and define the relative contribution of IL-22 compared to more frequently measured
171 responses, namely IFN- γ and IL-17. We first compared the magnitude of Mtb-specific IL-22-
172 producing CD4+ T cells to IFN- γ and IL-17 responses, in whole blood from healthy individuals
173 with latent Mtb infection (n = 19; **Figure 1A**). Mtb-specific CD4+ T cell responses (producing any
174 of the measured cytokines) were detected in all individuals (median: 1.34%, interquartile range
175 (IQR): 0.97-2.52). The highest frequency was observed for IFN- γ responses (median: 0.93%, IQR:
176 0.40-1.60). Although lower, the magnitude of IL-22+ Mtb-specific CD4+ T cells was not
177 significantly different from the IFN- γ response (median: 0.46%, IQR: 0.22-0.96). In contrast, IL-17
178 producing CD4+ T cells were detectable at much lower frequencies (median: 0.06%, IQR: 0.04-
179 0.11), ~16 to ~8 fold lower than IFN- γ (p < 0.0001) and IL-22 (p = 0.0002) responses, respectively
180 (**Figure 1B**). Using a Boolean gating strategy, we next assessed all possible cytokine combinations
181 to determine the co-expression profile of IFN- γ , IL-22 and IL-17 in Mtb-specific CD4+ T cells.
182 **Figure 1C** shows that the single IFN- γ response accounted for a median of 60% of the total Mtb
183 response, and single IL-22-producing cells contributed a median of 37% to Mtb response. Cytokine
184 co-expression was marginal, with only a small proportion of IFN- γ / IL-22 co-expressing cells

185 observed (median: 3.6%, IQR: 2-6). Only three out of 19 individuals produced IL-17 alone that
186 contributed more than 5% to the total Mtb response (**Figure 1C**).

187 We next sought to determine whether similar cytokine profiles were generated in response
188 to different types of Mtb antigens, and thus compared blood stimulated with Mtb lysate to gamma-
189 whole cell Mtb (gamma-irradiated) and live mycobacteria (*M. bovis* BCG), as well as Mtb peptides,
190 using an ESAT-6 and CFP-10 peptide pool. No differences in the magnitude of IL-22, IFN- γ or IL-
191 17 responses were observed between the different “complex” mycobacterial antigens tested (*i.e.*
192 Mtb cell lysate, gamma-irradiated Mtb and BCG), using 5 donors with LTBI (**Supplemental**
193 **Figure S2A&B**). This indicates that lysed, live or dead mycobacteria can detect IL-22 responses. In
194 contrast, IL-22 production was barely detectable in response to Mtb peptide stimulation in 11
195 donors with LTBI (**Supplemental Figure 2C**). These data raised two questions, namely (i) whether
196 IL-22 production originates from unconventional T cells; or (ii) is the result of T cell receptor
197 (TCR)-independent bystander activation, rather than being induced by CD4⁺ T cells upon
198 engagement of cognate antigen presented to the TCR (33). A variety of immune cells have the
199 ability to produce IL-22 (34, 35). Thus to address the first question, we investigated IL-22 and IFN-
200 γ production from a range of T cell subsets in whole blood, including mucosal-associated invariant
201 T (MAIT) cells, $\gamma\delta$ T cells, Natural Killer T (NKT) cells, CD4⁺ T cells and CD8⁺ T cells. Samples
202 were gated on live lymphocytes that were CD3⁺, and then defined as NKT (CD56⁺), $\gamma\delta$ (CD56-
203 $\gamma\delta$ TCR⁺), MAIT (CD56- $\gamma\delta$ TCR-V α 7.2+CD161⁺), CD4 (NKT- $\gamma\delta$ TCR-MAIT-CD8-CD4⁺) and
204 CD8 (NKT- $\gamma\delta$ TCR-MAIT-CD4-CD8⁺) T cells (**Figure 2A**). In 10 healthy donors tested for
205 cytokine responses, all cell subsets of interest produced IFN- γ when stimulated with Mtb lysate. In
206 contrast, in 7/10 donors, IL-22 was exclusively produced by CD4⁺ T cells, with only 3 donors
207 demonstrating a minor contribution of either MAIT or $\gamma\delta$ T cells to the total IL-22 response from
208 CD3⁺ cells (**Figure 2B**). Of note, the majority of MAIT and $\gamma\delta$ T cells were CD4⁻ (data not

209 shown), indicating that our gating strategy used in the previous experiments was not likely to have
210 included IL-22 from these T cell sources. Thus, conventional CD3+CD4+ T cells appear to be the
211 major source of IL-22 in response to Mtb antigens.

212 In order to determine whether IL-22 production was Mtb-specific (*i.e.* stimulated via
213 recognition of cognate antigen by the TCR) or due to a bystander effect of cytokine activation of
214 non-specific cells, we inhibited the TCR pathway by blocking Lck (a tyrosine kinase critical for
215 early propagation of TCR signalling), using increasing concentrations of the Lck inhibitor 7-
216 cyclopentyl-5-(4-phenoxyphenyl)-7H-pyrrolo[2,3-d] pyrimidin-4-ylamine. Using whole blood from
217 five donors with LTBI, we found that as for IFN- γ , IL-22 production was suppressed upon Lck
218 inhibition in a dose-dependent manner. Interestingly, the ED₅₀ (efficient dose causing 50% of
219 maximum effect) for IL-22 inhibition was 2.6 times lower compared to that of IFN- γ inhibition (7.5
220 μ M and 19.5 μ M, respectively; **Figure 2C**). These data demonstrate that IL-22 production from
221 CD4+ T cells is TCR-dependent.

222 Lastly, we compared the TCR β repertoire of IL-22 and IFN- γ -producing CD4+ T cells in
223 blood from five donors with LTBI, using a commercial typing test. Of note, while the kit detects 24
224 out of 64 known TCR $v\beta$ s, this represents up to 70% of the normal human TCR $v\beta$ repertoire.
225 **Figure 3A** shows representative flow cytometry plots of nine out of 24 TCR $v\beta$ s measured. $v\beta$
226 repertoire coverage for Mtb-specific IL-22-producing CD4+ T cells was broad and comparable to
227 total CD4+ T cells, while slightly lower coverage was observed for Mtb-specific IFN- γ producing
228 CD4+ T cells (medians 62%, 61% and 40%, respectively). Two TCRs, $v\beta$ 2 and $v\beta$ 5.1, accounted
229 for more than 5% of the total $v\beta$ repertoire for both Mtb-specific IL-22 and IFN- γ producing CD4+
230 T cells (median: 13.6% and 10.4% for $v\beta$ 2, 8.5% and 6.7% for $v\beta$ 5.1, respectively), and were also
231 the most prevalent $v\beta$ s observed for total CD4+ T cells (median: 10.0% for $v\beta$ 2 and 7.2% for $v\beta$ 5.1,
232 **Figure 3B**). Thus, TCR $v\beta$ repertoire usage was similar between IL-22 and IFN- γ -producing CD4+

233 T cells.

234 Overall, these results show that IL-22 contributes to a sizeable portion of the Mtb response
235 and these cells constitute a subset distinct from Th1 or Th17 cells. Moreover, Mtb-specific IL-22-
236 producing CD4⁺ T cells appear to be conventional CD4⁺ T cells and are dependent on TCR
237 signaling for cytokine production.

238

239 *Mtb-specific Th22 cells exhibit distinct memory and activation profiles compared to Th1 and*
240 *Th17 cells*

241 To further describe the phenotypic characteristics of Mtb-specific Th22 cells and compare them to
242 Th1 and Th17 subsets, we defined their memory (CD45RA, CD27 and CCR7) and activation
243 profile (HLA-DR) in healthy individuals with latent Mtb infection. We focused our analysis on
244 IFN- γ single producing cells (Th1), IL-22 single producing cells (Th22) and IL-17 single producing
245 cells (Th17), since the proportion of cytokine co-expressing cells was negligible (**Figure 1C**). The
246 measurement of CD45RA, CD27 and CCR7 enabled the detection of five distinct memory subsets,
247 namely naïve (CD45RA⁺CD27⁺CCR7⁺), central memory (CM: CD45RA⁻CD27⁺CCR7⁺),
248 transitional memory (TM: CD45RA⁻CD27⁺CCR7⁻), effector memory (EM: CD45RA⁻CD27⁻
249 CCR7⁻), and effector cells (Eff: CD45RA⁺CD27⁻CCR7⁻; (**Figure 4A**). The memory profile of
250 Mtb-specific CD4⁺ T cells varied depending on their Th polarization. Th1 cells were significantly
251 enriched in the EM phenotype compared to Th22 and Th17 cells (median: 50%, 32% and 19%,
252 respectively). Moreover, the Th22 subset was characterized by a low proportion of cells exhibiting
253 a TM phenotype compared to the Th1 or Th17 subsets (median: 6%, 17%, 18%, respectively;
254 **Figure 4C**).

255 When assessing the activation status of Mtb-specific CD4⁺ Th subsets (**Figure 4B**), we observed
256 that Th22 cells were characterized by a significantly lower expression of HLA-DR compared to

257 both Th1 and Th17 cells (median 1.1%, compared to 7.3% and 9.3%, respectively; **Figure 4D**). The
258 slightly increased frequency of HLA-DR-expressing Th22 cells observed during HIV infection,
259 unlike Th1, merely mirrored background HIV-induced activation observed on total CD4+ T cells. It
260 is plausible that other activation markers may be expressed on activated Th22 cells, and we have
261 observed CD69 and CD25 upregulation on Th22 cells upon Mtb stimulation of blood from latently
262 infected individuals (J. W. Milimu, R. Keeton, W. A. Burgers, unpublished).

263 Overall, these results indicate that Mtb-specific Th22 cells exhibit distinct memory and activation
264 profiles compared to Th1 and Th17 cells.

265

266 *HIV infection and TB disease alter the distribution of Mtb-specific CD4+ Th subsets*

267 To define the impact of HIV infection and TB disease on the distribution of Mtb-specific Th
268 subsets, we compared the magnitude of Th1, Th22 and Th17 cells in 72 participants classified into
269 four groups according to their HIV-1 and TB status: HIV-/LTBI ($n = 19$), HIV+/LTBI ($n = 18$),
270 HIV-/aTB ($n = 19$), and HIV+/aTB ($n = 16$). The clinical characteristics of each group are
271 summarized in **Table 1**. All participants were sampled prior to HIV and/or TB treatment. In
272 participants with LTBI, HIV infection led to a significant reduction (median ~3.6 fold) in the
273 frequency of Mtb-specific Th1 cells (median: 0.23% for HIV+ and 0.84% for HIV-; $p = 0.026$;
274 **Figure 5A**). While not statistically significant, the magnitude of the Mtb-specific Th22 response
275 was also lower in HIV-infected participants compared to HIV-uninfected subjects (median: 0.18%
276 and 0.45%, respectively). When assessing the effect of TB disease, we found that whilst TB disease
277 did not significantly alter the magnitude of Th1 or Th22 responses in HIV-uninfected individuals, in
278 HIV-infected persons the Mtb-specific Th profile was markedly distorted during TB compared to
279 LTBI (**Figure 5A**). Indeed, the magnitude of Th1 responses was significantly higher in aTB/HIV+
280 individuals compared to LTBI/HIV+ participants (median: 1.21% vs 0.23%, respectively, $p =$

281 0.0005). In contrast, Mtb-specific Th22 cells were significantly lower in aTB/HIV+ compared to
282 LTBI/HIV+ and LTBI/HIV- participants (median: 0.08% vs 0.23% and 0.45%, $p = 0.046$ and $p <$
283 0.0001 , respectively). No differences were observed for Mtb-specific Th17 cells in all four clinical
284 groups.

285 To account for the significant variation in absolute CD4+ T cell counts between groups
286 (**Table 1**), the absolute number of Mtb-specific CD4+ T cells was calculated and compared between
287 each group. As expected, HIV co-infection resulted in reduced Mtb-specific Th1 absolute cell
288 numbers regardless of TB status (median: 1.4 vs 6.5 cells/mm³ in LTBI and 2.2 vs 5.4 cells/mm³ in
289 aTB; **Figure 5B**). A comparable profile was observed for Th22 cells, but due to the decreased
290 frequency of Th22 cells in aTB/HIV+ compared to LTBI/HIV+ and low CD4 counts in the former
291 group, the absolute number of circulating Mtb-specific Th22 cells was markedly reduced in
292 aTB/HIV+ individuals compared to LTBI (median: 0.09 vs 1.02 cells/mm³, respectively, **Figure**
293 **5B**). Of note, for HIV-infected individuals, we found no relationship between the frequency of any
294 of the Th cytokine responses with absolute CD4 count or HIV viral load, regardless of TB status
295 (data not shown).

296 Next, we examined how HIV infection and active TB might alter the relative contribution of
297 Th subsets to the total Mtb response. Whilst there were no significant differences in the contribution
298 of Th1 and Th22 cells to the Mtb response in LTBI/HIV-, LTBI/HIV+ and aTB/HIV- groups
299 (medians for Th1: 60%, 48% and 72%; and medians for Th22: 37%, 37% and 22%, respectively),
300 in the aTB/HIV+ group, the Mtb-specific response consisted almost exclusively of Th1 cells
301 (>90%), with Th22 cells representing less than 5% of the total Mtb response (**Figure 5C**).

302

303 ***TB disease and HIV co-infection differentially influence memory and activation profiles of Mtb-***
304 ***specific CD4+ Th subsets***

305 Lastly, we performed phenotypic characterization of Mtb-specific CD4 Th subsets during HIV
306 infection and TB disease. Comparing first the memory differentiation phenotype of Th subsets, we
307 showed that TB disease, characterized by active bacterial replication, irrespective of HIV co-
308 infection, promotes the differentiation of Mtb-specific Th1 cells. The proportion of Th1 cells
309 exhibiting an EM phenotype was significantly higher in aTB compared to LTBI (69% vs 50% for
310 HIV-, $p = 0.0295$ and 77% vs 45% for HIV+, $p = 0.0004$; **Figure 6A**). In contrast, no alteration of
311 the memory differentiation phenotype of Th22 or Th17 cells was observed in aTB. We next
312 assessed the effect of HIV infection and aTB on the activation profile of Mtb-specific CD4+ Th
313 subsets. As previously described (36), irrespective of HIV infection, Mtb-specific Th1 cells in aTB
314 were characterized by significantly higher expression of HLA-DR when compared to persons with
315 LTBI (median: 45% vs 7%, respectively for HIV-, $p = 0.0004$ and 60% vs 8% for HIV+, $p =$
316 0.0009). However, aTB did not induce any significant changes in HLA-DR expression in Th22 or
317 Th17 cells (**Figure 6B**).

318 These data confirm that Mtb replication during TB disease influences the memory
319 differentiation and activation of Mtb-specific Th1 cells. In contrast, TB disease does not alter the
320 memory or activation profile of Mtb-specific Th22 cells, indicating that TB differentially modulates
321 Mtb-specific Th1 and Th22 cells.

322

323 **DISCUSSION**

324 The importance of CD4+ Th1 (IFN- γ) and Th17 (IL-17) responses in protective immunity to
325 *M. tuberculosis* is well established (9, 37). The emerging role of IL-22 and Th22 cells in TB
326 immunity is less well studied, and we sought to address this knowledge gap. To better understand
327 the contribution of Th22 cells to Mtb immune responses, we examined the dynamics of this subset
328 in the context of TB disease and/or HIV infection by comparing the magnitude, differentiation and

329 activation profiles of CD4⁺ T cells producing IFN- γ , IL-22 and IL-17. We confirm and extend our
330 previous observations from latent Mtb infection (31), demonstrating that distinct, Mtb-specific IL-
331 22-producing CD4⁺ T cells contribute a substantial portion to the total CD4⁺ T cell response to
332 Mtb in both latent infection and TB disease. Furthermore, Th22 cells display different memory and
333 activation profiles compared to Th1 and Th17 cells, and Mtb-specific Th22 are severely reduced in
334 blood during TB disease in the context of HIV co-infection.

335

336 We show that Mtb-specific Th22 cells make up nearly 40% of the total Mtb response
337 measured in both LTBI and in TB disease, with Th1 cells contributing 60% and Th17 cells less than
338 3% to the response. In some individuals, the Th22 response was 60-70% of the total CD4⁺ T cell
339 response measured. These data suggest that Th22 cells may contribute to TB immunity. Indeed, IL-
340 22 was recently found to play a protective role against the hypervirulent clinical strain of Mtb,
341 HN878, in a mouse model (17). In this model, an indirect mechanism of Mtb control was reported,
342 where IL-22 acted on lung epithelial cells to induce secretion of antimicrobial proteins, as well as
343 the induction of chemokines that led to enhanced recruitment of macrophages (17). A direct effector
344 function has also been described; whilst IL-22 receptors are present primarily on non-hematopoietic
345 cells, there is mounting evidence that they may be expressed on macrophages (16, 17). IL-22
346 inhibited Mtb growth through induction of TNF- α to activate macrophages and enhance
347 phagolysosomal fusion in infected macrophages through calgranulin A expression (16, 17, 38). In
348 addition to these murine, non-human primate and *in vitro* models demonstrating a role for IL-22 in
349 Mtb control, a human genetic study described polymorphisms in the promoter region of IL-22
350 leading to decreased IL-22 production, that were associated with greater TB susceptibility (26).

351

352 IL-22 has been classified as a Th17 cytokine due to co-expression with IL-17 in mouse
353 studies and several shared functions between the two cytokines (39). Consistent with previous
354 studies (29, 31), our results showed that the vast majority of IL-22 is produced independently of IL-
355 17 (and IFN- γ) in humans. This implies a distinct role for IL-22 in the immune response to Mtb
356 compared to IL-17 (40). Indeed, IL-22 was required for Mtb control at the chronic stage of
357 infection, while IL-17 was important in the acute stage of Mtb infection in the same mouse model
358 (17, 41). Although IL-22 and IL-17 have some overlapping functions, such as inducing
359 antimicrobial peptides, regulating chemokine expression and promoting tissue proliferation and
360 healing (17, 18, 39, 41), IL-22 may also mediate mycobacterial control by inducing TNF- α for
361 macrophage activation (16, 17), a function that is more commonly associated with IFN- γ (42).
362 Further studies are warranted to define the relative contribution and potential synergy of IL-22 with
363 IFN- γ and IL-17 in protective immunity to TB.

364
365 In accordance with previous data (25), we show that Mtb-specific Th22 responses in the
366 blood were 50% lower in individuals with TB compared to Mtb-exposed individuals. It is likely that
367 in the context of TB disease, Mtb-specific Th22 cells migrate to the lungs. This conjecture is based
368 on the fact that IL-22-producing cells have been detected in the lungs and granulomas of rhesus
369 monkeys with TB (43, 44), that soluble IL-22 has been found to be elevated at the site of disease
370 during both pulmonary and extra-pulmonary TB (24, 25), and also that IL-22-producing cells
371 express CCR6, which has shown to mediate T cell homing to mucosal tissues (31). Two TB
372 treatment studies further support this hypothesis; Suliman and colleagues found that patients with
373 LTBI who received isoniazid prophylactic treatment had increased frequencies of BCG-specific IL-
374 22-secreting CD4⁺ T cells compared to pre-treatment frequencies (45). Furthermore, Zhang and
375 colleagues reported an increase in Mtb-specific soluble IL-22 in blood of TB patients at the

376 completion of their anti-TB treatment, compared to before treatment (46). These studies suggest
377 that reduction of antigen load at the site of disease led to recirculation of Th22 cells to blood.

378

379 Consistent with our recent findings (31), HIV infection resulted in a lower frequency of Th1
380 and Th22 cells in Mtb-exposed individuals, and also those with active TB. The depletion of Th22
381 cells could be explained by the fact that the majority of Th22 cells express CCR6 (31), and CD4+
382 CCR6+ cells display an increased permissiveness to HIV infection (47-49), are enriched in HIV
383 DNA (50), and appear to preferentially support HIV replication (51). Indeed, CD4+CCR6+ cells
384 have been shown to express high levels of the HIV co-receptors CCR5 and CXCR4, important for
385 viral entry, as well as integrin $\alpha 4\beta 7$, which has been associated with increased HIV susceptibility
386 (47, 48, 52). Furthermore, CCR6+ cells lack the ability to secrete β -chemokines, which may protect
387 against HIV in an autocrine manner (52). Thus, in the context of both TB disease and HIV
388 infection, the combined effect of cell depletion and cell migration is the likely cause of the
389 strikingly low IL-22 responses we observed in blood.

390

391 A range of innate and adaptive immune cells have been reported to produce IL-22 (16, 27,
392 26). In our study, we found that the predominant source of T cell-derived IL-22 in response to Mtb
393 antigens was conventional CD4+ T cells, excluding MAIT, $\gamma\delta$ and iNKT cells. Interestingly, whilst
394 IL-22 responses were readily detectable upon stimulation with whole or lysed mycobacteria (*i.e.*
395 Mtb cell lysate, gamma-irradiated Mtb and BCG), Mtb peptides were not able to stimulate IL-22
396 responses, raising the question of whether IL-22 production is induced through bystander effects on
397 T cells from structural components present in these mycobacterial antigen preparations, thus leading
398 to cytokine production. We showed for the first time that IL-22 production is indeed mediated by
399 TCR engagement, as demonstrated by inhibition of TCR signaling and resultant abrogation of

400 cytokine production. Furthermore, IL-22-producing CD4⁺ T cells displayed similar V β repertoire
401 usage as IFN- γ producing CD4⁺ T cells. These data underscore our assertion that these are
402 conventional CD4⁺ T cells; however, whilst, conventional, they may not be classically restricted
403 (i.e dependent on MHC). The lack of detectable IL-22 in response to peptide stimulation suggests
404 that induction of IL-22 may be via alternative antigen presentation mechanisms and/or additional
405 co-stimulation requirements (53). One possibility is that IL-22 might be induced by modified
406 peptide or non-peptide antigens, such as lipopeptides or lipids, and we are currently exploring this
407 hypothesis. There is evidence supporting the production of IL-22 by CD4⁺ T cells recognizing
408 CD1a (54, 55), and both CD1a and CD1c can present lipopeptide antigens to conventional T cells
409 (56). Of note, group 1 CD1-restricted T cells specific for microbial lipid antigens display similar $\alpha\beta$
410 TCR usage to peptide-specific T cells (57).

411 In conclusion, we provide evidence that Th22 cells are a major component of the specific
412 adaptive immune response to Mtb during both infection and disease, and that these cells are reduced
413 in blood during HIV co-infection, building on previous work. We hypothesise that Th22 cells could
414 migrate to the lungs and expand for an effective secondary immune response to provide long-lasting
415 protection against TB. To further investigate the specific role of Th22 cells in TB, it will be of
416 interest to compare the profile of Th22 we observed in blood with the site of disease. The recent
417 outcomes of vaccine candidate M72/AS01E demonstrating 50% efficacy against TB (5) and
418 intravenous BCG vaccination showing sterilizing immunity in NHPs (7) provide an ideal setting to
419 assess the potential protective role of Mtb-specific Th22 cells.

420

421 **ACKNOWLEDGMENTS**

422 We thank the study participants for providing samples and for their time and commitment to the
423 study, and to the clinic staff at the Ubuntu HIV-TB clinic. We thank Dr Charlotte Schutz and Dr

424 Cari Stek for phlebotomy. We thank Tracey Müller for assistance with sample processing, and
425 Kathryn Norman for administrative assistance. The following reagents were obtained through BEI
426 Resources, NIAID, NIH: *Mycobacterium tuberculosis*, Strain H37Rv, Gamma-Irradiated Whole
427 Cells, NR-14819 and *Mycobacterium tuberculosis*, Strain H37Rv, Whole Cell Lysate, NR-14822.

428

429 **CONTRIBUTIONS**

430 MSM, RJW, CR and WAB designed the study; MSM, RB and FMAO performed the experiments;
431 MSM analyzed the data and wrote the paper. CR and WAB contributed to the data discussion and
432 writing the paper. All authors read and approved the final manuscript.

433 **REFERENCES**

- 434 1. World Health Organization (2019) Global TB Report 2019.
435 https://www.who.int/tb/publications/global_report/en/
- 436 2. O’Garra, A., P. S. Redford, F. W. McNab, C. I. Bloom, R. J. Wilkinson *et al.* (2013) The
437 immune response in tuberculosis. *Annu. Rev. Immunol.* 31: 475–527. DOI: 10.1146/annurev-
438 immunol-032712-095939
- 439 3. Fine, P. E. M. (1995) Variation in protection by BCG: implications of and for heterologous
440 immunity. *Lancet* 346: 1339–1345. DOI: 10.1016/s0140-6736(95)92348-9
- 441 4. Trunz, B. B., P. Fine, and C. Dye (2006) Effect of BCG vaccination on childhood tuberculous
442 meningitis and miliary tuberculosis worldwide: a meta-analysis and assessment of cost-
443 effectiveness. *Lancet* 367: 1173–1180. DOI: 10.1016/S0140-6736(06)68507-3
- 444 5. Tait, D. R., M. Hatherill, O. Van Der Meeren, A. M. Ginsberg, E. Van Brakel *et al.* (2019) Final
445 Analysis of a Trial of M72/AS01E Vaccine to Prevent Tuberculosis. *N. Engl. J. Med.* 381:2429-
446 39. DOI: 10.1056/NEJMoa1909953
- 447 6. Nemes, E., H. Geldenhuys, V. Rozot, K. T. Rutkowski, F. Ratangee *et al.* (2018) Prevention of
448 *M. tuberculosis* Infection with H4:IC31 Vaccine or BCG Revaccination. *N. Engl. J. Med.* 379:
449 138–149. DOI: 10.1056/NEJMoa1714021
- 450 7. Darrah, P. A., J. J. Zeppa, J. A. Hackney, M. H. I. Wadsworth, T. K. Hughes *et al.* (2019)
451 Prevention of tuberculosis in macaques after intravenous BCG immunization. *Nature* 577. DOI:
452 10.1038/s41586-019-1817-8.
- 453 8. Sakai, S., K. D. Mayer-Barber, and D. L. Barber (2014) Defining features of protective CD4 T
454 cell responses to *Mycobacterium tuberculosis*. *Curr. Opin. Immunol.* 29: 137–142. DOI:
455 10.1016/j.coi.2014.06.003
- 456 9. Jasenosky, L. D., T. J. Scriba, W. A. Hanekom, and A. E. Goldfeld (2015) T cells and adaptive

- 457 immunity to *Mycobacterium tuberculosis* in humans. *Immunol. Rev.* 264: 74–87. DOI:
458 10.1111/imr.12274
- 459 10. Mittrücker, H. W., U. Steinhoff, A. Köhler, M. Krause, D. Lazar *et al.* (2007) Poor correlation
460 between BCG vaccination-induced T cell responses and protection against tuberculosis. *Proc.*
461 *Natl. Acad. Sci. U. S. A.* 104: 12434–12439. DOI: 10.1073/pnas.0703510104
- 462 11. Majlessi, L., M. Simsova, Z. Jarvis, P. Brodin, M. J. Rojas *et al.* (2006) An increase in
463 antimycobacterial Th1-cell responses by prime-boost protocols of immunization does not
464 enhance protection against tuberculosis. *Infect. Immun.* 74: 2128–2137. DOI:
465 10.1128/IAI.74.4.2128-2137.2006
- 466 12. Gallegos, A. M., J. W. J. van Heijst, M. Samstein, X. Su, E. G. Pamer *et al.* (2011) A gamma
467 interferon independent mechanism of CD4 T cell mediated control of *M. tuberculosis* infection
468 in vivo. *PLoS Pathog.* 7: e1002052. DOI: 10.1371/journal.ppat.1002052
- 469 13. Wozniak, T. M., B. M. Saunders, A. A. Ryan, and W. J. Britton (2010) *Mycobacterium bovis*
470 BCG-specific Th17 cells confer partial protection against *Mycobacterium tuberculosis* infection
471 in the absence of gamma interferon. *Infect. Immun.* 78: 4187–4194. DOI: 10.1128/IAI.01392-09
- 472 14. Lu, L. L., M. T. Smith, K. K. Q. Yu, C. Luedemann, T. J. Suscovich *et al.* (2019) IFN- γ -
473 independent immune markers of *Mycobacterium tuberculosis* exposure. *Nat. Med.* 25: 977–987.
474 DOI: 10.1038/s41591-019-0441-3
- 475 15. Dudakov, J. A., A. M. Hanash, and M. R. M. van den Brink (2015) Interleukin-22:
476 immunobiology and pathology. *Annu. Rev. Immunol.* 33: 747–785. DOI: 10.1146/annurev-
477 immunol-032414-112123
- 478 16. Dhiman, R., M. Indramohan, P. F. Barnes, R. C. Nayak, P. Paidipally *et al.* (2009) IL-22
479 produced by human NK cells inhibits growth of *Mycobacterium tuberculosis* by enhancing
480 phagolysosomal fusion. *J. Immunol.* 183: 6639–6645. DOI: 10.4049/jimmunol.0902587

- 481 17. Treerat, P., O. Prince, A. Cruz-lagunas, M. Munoz-Torrico, M. Salazar-Lezama *et al.* (2017)
482 Novel role for IL-22 in protection during chronic *Mycobacterium tuberculosis* HN878 infection.
483 *Mucosal Immunol.* 10:1069-1081. DOI: 10.1038/mi.2017.15
- 484 18. Moyat, M., H. Bouzourene, W. Ouyang, J. Iovanna, J. C. Renauld *et al.* (2017) IL-22-induced
485 antimicrobial peptides are key determinants of mucosal vaccine-induced protection against *H.*
486 *pylori* in mice. *Mucosal Immunol.* 10: 271–281. DOI: 10.1038/mi.2016.38
- 487 19. Tyler, C. J., N. E. McCarthy, J. O. Lindsay, A. J. Stagg, B. Moser *et al.* (2017) Antigen-
488 Presenting Human $\gamma\delta$ T Cells Promote Intestinal CD4+ T Cell Expression of IL-22 and Mucosal
489 Release of Calprotectin. *J. Immunol.* 198: 3417–3425. DOI: 10.4049/jimmunol.1700003
- 490 20. Whittington, H. A., L. Armstrong, K. M. Uppington, and A. B. Millar (2004) Interleukin-22: A
491 potential immunomodulatory molecule in the lung. *Am. J. Respir. Cell Mol. Biol.* 31: 220–226.
492 DOI: 10.1165/rcmb.2003-0285OC
- 493 21. Aujla, S. J., Y. R. Chan, M. Zheng, M. Fei, D. J. Askew *et al.* (2008) IL-22 mediates mucosal
494 host defense against Gram-negative bacterial pneumonia. *Nat. Med.* 14:275-281. DOI:
495 10.1038/nm1710
- 496 22. Behrends, J., J. Renauld, S. Ehlers, and C. Ho (2013) IL-22 Is mainly produced by IFN- γ -
497 secreting cells but is dispensable for host protection against *Mycobacterium tuberculosis*
498 infection. *PLoS One* 8:e57379. DOI: 10.1371/journal.pone.0057379
- 499 23. Wilson, M. S., C. G. Feng, D. L. Barber, F. Yarovinsky, A. W. Cheever *et al.* (2010) Redundant
500 and pathogenic roles for IL-22 in mycobacterial, protozoan, and helminth infections. *J.*
501 *Immunol.* 184: 4378–4390. DOI: 10.4049/jimmunol.0903416
- 502 24. Matthews, K., K. A. Wilkinson, B. Kalsdorf, T. Roberts, A. Diacon *et al.* (2011) Predominance
503 of interleukin-22 over interleukin-17 at the site of disease in human tuberculosis. *Tuberculosis*
504 91: 587–593. DOI: 10.1016/j.tube.2011.06.009

- 505 25. Scriba, T. J., B. Kalsdorf, D.A. Abrahams, F. Isaacs, J. Hofmeister *et al* (2008) Distinct, specific
506 IL-17- and IL-22-producing CD4+ T cell subsets contribute to the human anti-mycobacterial
507 immune response. *J. Immunol.* 180: 1962–1970. DOI: 10.4049/jimmunol.180.3.1962
- 508 26. Zhang, G., X. Chen, L. Chan, M. Zhang, B. Zhu *et al.* (2011) An SNP selection strategy
509 identified IL-22 associating with susceptibility to tuberculosis in Chinese. *Sci. Rep.* 1: 20. DOI:
510 10.1038/srep00020
- 511 27. Toussiro, É., C. Laheurte, B. Gaugler, D. Gabriel, and P. Saas (2018) Increased IL-22- and IL-
512 17A-Producing Mucosal-Associated Invariant T Cells in the Peripheral Blood of Patients With
513 Ankylosing Spondylitis.. *Front. Immunol.* 9: 1610. DOI: 10.3389/fimmu.2018.01610
- 514 28. Cella, M., R. Gamini, C. Sécca, P. L. Collins, S. Zhao *et al.* (2019) Subsets of ILC3–ILC1-like
515 cells generate a diversity spectrum of innate lymphoid cells in human mucosal tissues. *Nat.*
516 *Immunol.* 20: 980–991. DOI: 10.1038/s41590-019-0425-y
- 517 29. Trifari, S., C. D. Kaplan, E. H. Tran, N. K. Crellin, and H. Spits (2009) Identification of a human
518 helper T cell population that has abundant production of interleukin 22 and is distinct from
519 T(H)-17, T(H)1 and T(H)2 cells. *Nat. Immunol.* 10: 864–871. DOI: 10.1038/ni.1770
- 520 30. Eyerich, S., K. Eyerich, D. Pennino, T. Carbone, F. Nasorri *et al.* (2009) Th22 cells represent a
521 distinct human T cell subset involved in epidermal immunity and remodeling. *J. Clin. Invest.*
522 119: 3573–3585. DOI: 10.1172/JCI40202
- 523 31. Bunjun, R., F. M. A. Omondi, M. S. Makatsa, T. L. Müller, R. Keeton *et al.* Th22 cells are a
524 major contributor to the mycobacterial CD4 + T cell response and are depleted during HIV
525 infection. *Under revision, J. Immunol.*
- 526 32. Hanekom, W. A., J. Hughes, M. Mavinkurve, M. Mendillo, M. Watkins *et al.* (2004) Novel
527 application of a whole blood intracellular cytokine detection assay to quantitate specific T-cell
528 frequency in field studies. *J. Immunol. Methods* 291: 185–195. DOI: 10.1016/j.jim.2004.06.010

- 529 33. Boyman, O (2010) Bystander activation of CD4+ T cells. *Eur. J. Immunol.* 40: 936–939. DOI
530 10.1002/eji.201040466
- 531 34. Sonnenberg, G. F., L. a Fouser, and D. Artis (2011) Border patrol: regulation of immunity,
532 inflammation and tissue homeostasis at barrier surfaces by IL-22. *Nat. Immunol.* 12: 383–390.
533 DOI: 10.1038/ni.2025
- 534 35. Ronacher, K., R. Sinha, and M. Cestari (2018) IL-22: An Underestimated Player in Natural
535 Resistance to Tuberculosis? *Front. Immunol.* 9:2209.. DOI: 10.3389/fimmu.2018.02209
- 536 36. Riou, C., N. Berkowitz, R. Goliath, W. A. Burgers, and R. J. Wilkinson (2017) Analysis of the
537 Phenotype of *Mycobacterium tuberculosis*-Specific CD4+ T Cells to Discriminate Latent from
538 Active Tuberculosis in HIV-Uninfected and HIV-Infected Individuals. *Front. Immunol.* 8: 968.
539 DOI: 10.3389/fimmu.2017.00968
- 540 37. Shen, H., and Z. W. Chen (2018) The crucial roles of Th17-related cytokines/signal pathways in
541 *M. tuberculosis* infection. *Cell. Mol. Immunol.* 15: 216–225. DOI: 10.1038/cmi.2017.128
- 542 38. Dhiman, R., S. Venkatasubramanian, P. Paidipally, P. F. Barnes, A. Tvinnereim *et al.* (2014)
543 Interleukin 22 inhibits intracellular growth of *Mycobacterium tuberculosis* by enhancing
544 calgranulin A expression. *J. Infect. Dis.* 209: 578–587. DOI: 10.1093/infdis/jit495
- 545 39. Liang, S. C., X.-Y. Tan, D. P. Luxenberg, R. Karim, K. Dunussi-Joannopoulos *et al.* (2006)
546 Interleukin (IL)-22 and IL-17 are coexpressed by Th17 cells and cooperatively enhance
547 expression of antimicrobial peptides. *J. Exp. Med.* 203: 2271–2279. DOI:
548 10.1084/jem.20061308
- 549 40. Ouyang, W., J. K. Kolls, and Y. Zheng (2008) The biological functions of T helper 17 cell
550 effector cytokines in inflammation *Immunity* 28: 454–467. DOI: 10.1016/j.immuni.2008.03.004
- 551 41. Gopal, R., L. Monin, S. Slight, U. Uche, E. Blanchard *et al.* (2014) Unexpected role for IL-17
552 in protective immunity against hypervirulent *Mycobacterium tuberculosis* HN878 infection.

- 553 *PLoS Pathog.* 10: e1004099. DOI: 10.1371/journal.ppat.1004099
- 554 42. Flynn, J. A. L., J. Chan, K. J. Triebold, D. K. Dalton, T. A. Stewart *et al.* (1993) An essential
555 role for interferon gamma in resistance to *Mycobacterium tuberculosis* infection. *J. Exp. Med.*
556 178: 2249–2254. DOI: 10.1084/jem.178.6.2249
- 557 43. Qiu, L., D. Huang, and C. Chen (2008) Severe tuberculosis induces unbalanced up-regulation of
558 gene networks and overexpression of IL-22, MIP-1 α , CCL27, IP-10, CCR4, CCR5, CXCR3,
559 PD1, PDL2, IL-3, IFN- β , TIM1, and TLR2 but low antigen-specific cellular responses. *J. Infect.*
560 *Dis.* 198: 1514–1519. DOI: 10.1086/592448
- 561 44. Yao, S., D. Huang, C. Y. Chen, L. Halliday, G. Zeng *et al.* (2010) Differentiation, distribution
562 and gammadelta T cell-driven regulation of IL-22-producing T cells in tuberculosis. *PLoS*
563 *Pathog.* 6: e1000789. DOI: 10.1371/journal.ppat.1000789
- 564 45. Suliman S., H. Geldenhuys, J. L. Johnson, J. E. Hughes, E. Smit *et al.* (2016) *Bacillus Calmette-*
565 *Guérin (BCG) Revaccination of Adults with Latent Mycobacterium tuberculosis Infection*
566 *Induces Long-Lived BCG-Reactive NK Cell Responses.* *J Immunol.* 197:1100-1110. DOI:
567 10.4049/jimmunol.1501996
- 568 46. Zhang, M., G. Zeng, Q. Yang, J. Zhang, X. Zhu *et al.* (2014) Anti-tuberculosis treatment
569 enhances the production of IL-22 through reducing the frequencies of regulatory B cells.
570 *Tuberculosis* 94: 238–244. DOI: 10.1016/j.tube.2013.12.003
- 571 47. Monteiro, P., A. Gosselin, V. S. Wacleche, M. El-Far, E. A. Said *et al.* (2011) Memory CCR6
572 + CD4 + T cells are preferential targets for productive HIV type 1 infection regardless of their
573 expression of integrin β 7. *J. Immunol.* 186: 4618–4630. DOI: 10.4049/jimmunol.1004151
- 574 48. Alvarez, Y., M. Tuen, G. Shen, F. Nawaz, J. Arthos *et al.* (2013) Preferential HIV infection of
575 CCR6+ Th17 cells is associated with higher levels of virus receptor expression and lack of
576 CCR5 ligands. *J. Virol.* 87: 10843–10854. DOI: 10.1128/JVI.01838-13

- 577 49. Gosselin, A., P. Monteiro, N. Chomont, F. Diaz-Griffero, E. A. Said *et al.* (2010) Peripheral
578 blood CCR4 + CCR6 + and CXCR3 + CCR6 + CD4 + T cells are highly permissive to HIV-1
579 infection. *J. Immunol.* 184: 1604–1616. DOI: 10.4049/jimmunol.0903058
- 580 50. Gosselin, A., T. R. W. Salinas, D. Planas, V. S. Wacleche, Y. Zhang *et al.* (2017) HIV persists
581 in CCR6 + CD4 + T cells from colon and blood during antiretroviral therapy. *AIDS* 31: 35–48.
582 DOI: 10.1097/QAD.0000000000001309
- 583 51. Planas, D., Y. Zhang, P. Monteiro, J. P. Goulet, A. Gosselin *et al.* (2017) HIV-1 selectively
584 targets gut-homing CCR6+CD4+ T cells via mTOR-dependent mechanisms. *JCI Insight* 2.
585 DOI: 10.1172/jci.insight.93230
- 586 52. Sivo, A., A. Schuetz, D. Sheward, V. Joag, S. Yegorov *et al.* (2018) Integrin $\alpha 4\beta 7$ expression
587 on peripheral blood CD4+ T cells predicts HIV acquisition and disease progression outcomes.
588 *Sci. Transl. Med.* 10. DOI: 10.1126/scitranslmed.aam6354
- 589 53. Magee, C. N., O. Boenisch, and N. Najafian (2012) The role of costimulatory molecules in
590 directing the functional differentiation of alloreactive T helper cells. *Am. J. Transplant.* 12:
591 2588–2600. DOI: 10.1111/j.1600-6143.2012.04180.x
- 592 54. De Jong, A., V. Peña-Cruz, T. Y. Cheng, R. A. Clark, I. Van Rhijn *et al.* (2010) CD1a-
593 autoreactive T cells are a normal component of the human $\alpha\beta$ T cell repertoire. *Nat. Immunol.*
594 11: 1102–1109. DOI: 10.1038/ni.1956
- 595 55. Otsuka, Y., E. Watanabe, E. Shinya, S. Okura, H. Saeki *et al.* (2018) Differentiation of
596 Langerhans Cells from Monocytes and Their Specific Function in Inducing IL-22-Specific Th
597 Cells. *J. Immunol.* 201: 3006–3016. DOI: 10.4049/jimmunol.1701402
- 598 56. Siddiqui, S., L. Visvabharathy, and C. R. Wang (2015) Role of Group 1 CD1-Restricted T Cells
599 in Infectious Disease. *Front. Immunol.* 6:337. DOI: 10.3389/fimmu.2015.00337
- 600 57. Grant, E. P., M. Degano, J. P. Rosat, S. Stenger, R. L. Modlin *et al.* (1999) Molecular

601 recognition of lipid antigens by T cell receptors. *J. Exp. Med.* 189: 195–205. DOI:

602 10.1084/jem.189.1.195

603

604

605 **Footnotes:**

606 This project is part of the EDCTP2 programme supported by the European Union (EU)'s Horizon
607 2020 programme (TMA2016SF-1535-CaTCH-22, to WAB). WAB was also funded by the
608 SAMRC, NRF SA (92755) and NHLS Trust (2016-2DEV04). Further funding came from the
609 National Institutes of Health, the Office of the Director (OD) (NIH, R21AI115977 to CR). CR is
610 supported by the EDCTP programme supported by the European Union's Horizon 2020 programme
611 (TMA2017SF-1951-TB-Spec, to CR). RJW is supported by the Wellcome Trust (203135 and
612 104803), NIH (U01 AI115940), the Francis Crick Institute (Cancer Research UK, MRC UK and
613 Wellcome FC0010218), and SAMRC (SHIP). The funders had no role in study design, data
614 collection and analysis, decision to publish, or preparation of the manuscript.

615

616 **Disclosure:** The authors have no conflicts of interest.

617

618
619

Table 1: Clinical characteristics of the four study groups.

	LTBI		Active TB	
	HIV-	HIV+	HIV-	HIV+
<i>n</i>	19	18	19	16
CD4 count (cells/mm ³) ^a	923 [687-1051]	547 [463-626]	648 [593-778]	153 [75-207]
Log10 HIV viral load (RNA copies/ml) ^a	n.a	4.61 [3.72-4.97]	n.a	5.06 [4.68-5.54]
Age ^a	25 [19-31]	33 [29-38]	31 [26-40]	34 [29-46]
Sex (F/M)	9/10	16/2	2/17	9/7

620 ^a medians and [interquartile ranges]. F: female; M: male, LTBI: latent tuberculosis infection. n.a:
621 not applicable.

622

623

624

625 **FIGURE LEGENDS**

626

627 **Figure 1: Contribution of IFN- γ , IL-22 and IL-17 to Mtb-specific CD4+ T cell responses in**
628 **individuals with latent TB infection (LTBI).** (A) Representative flow cytometry plots of IFN- γ ,
629 IL-22 and IL-17 production after stimulation with Mtb lysate. NS: no stimulation. (B) Summary
630 graph of the frequency of cytokine responses. Statistical comparisons were performed using a one-
631 way ANOVA Friedman test. **** $p < 0.0001$. (C) Proportion of different combinations of IFN- γ ,
632 IL-22 and IL-17 in response to Mtb stimulation. Medians and interquartile ranges are depicted.

633

634 **Figure 2: IL-22 responses from different cell populations and the impact of TCR blocking on**
635 **IFN- γ and IL-22 production.** (A) Representative flow cytometry plots showing the gating strategy
636 for NKT, $\gamma\delta$, MAIT, CD4⁺ and CD8⁺ T cells. The overlaid dots indicate IFN- γ (blue) or IL-22
637 (red) production from live CD3⁺ lymphocytes in response to Mtb lysate. (B) The frequencies of
638 each subset are indicated, as a percentage of total live CD3⁺ cells. (B) IFN- γ (blue) and IL-22 (red)
639 responses to Mtb lysate from NKT, $\gamma\delta$, MAIT, CD4⁺ and CD8⁺ T cells in healthy donors (n=10).
640 Each dot represents one individual. (C) Representative flow cytometry plots showing Mtb-specific
641 IFN- γ and IL-22 responses in the presence of different concentrations of Lck inhibitor 7-
642 Cyclopentyl-5-(4-phenoxyphenyl)-7H-pyrrolo[2,3-d] pyrimidin-4-ylamine and summary graph (n =
643 5). Medians and interquartile ranges are depicted. Vertical arrows show ED₅₀. A nonlinear
644 regression curve fit was used.

645

646 **Figure 3: TCR V β repertoire of IFN- γ and IL-22-producing CD4⁺ T cells.** (A) Representative
647 flow cytometry plots showing staining of 9/24 V β receptors on total CD4⁺ T cells, IFN- γ and IL-
648 22-producing CD4⁺ T cells. (B) Bar graph (each bar represent a donor) and (C) summary pie chart
649 showing expression of 24 V β receptors by total CD4⁺ T cells, IFN- γ and IL-22-producing CD4⁺ T
650 cells (n = 5). Means are depicted.

651

652 **Figure 4: Comparison of the memory differentiation and activation profile of Mtb-specific**
653 **Th1, Th22 and Th17 cells in LTBI individuals.** (A) Representative overlay plots showing
654 memory subsets in total CD4⁺ T cells (grey), IFN- γ ⁺ (blue), IL-22⁺ (red) and IL-17⁺ (green) cells
655 in response to Mtb lysate. (Naive: CD45RA⁺CD27⁺CCR7⁺; central memory (CM): CD45RA⁻
656 CD27⁺CCR7⁺; transitional memory (TM): CD45RA⁻CD27⁺CCR7⁻, effector memory (EM):

657 CD45RA-CD27-CCR7-and effector cells (Eff): CD45RA+CD27-CCR7-). **(B)** Representative
658 overlay plots of HLA-DR expression in total CD4+ T cells (grey), IFN- γ + (blue), IL-22+ (red) and
659 IL-17+ (green) cells in response to Mtb lysate. Summary graph (n=19) showing distribution of
660 memory subsets **(C)** and expression of HLA-DR **(D)** on IFN- γ , IL-22 and IL-17-producing CD4+ T
661 cells in individuals with LTBI in the absence of HIV infection. Medians and interquartile ranges are
662 depicted. Statistical comparisons were performed using a one-way ANOVA Kruskal–Wallis test. *
663 $p < 0.05$, ** $p < 0.01$, *** $p < 0.001$, **** $p < 0.0001$.

664

665 **Figure 5: Contribution of IFN- γ , IL-22 and IL-17 to Mtb-specific CD4+ T cell responses and**
666 **the effect of HIV infection and active TB disease.** **(A)** Frequency of Th1, Th22 and Th17
667 responses and **(B)** absolute number of Th1, Th22 and Th17 cells detected in response to Mtb lysate
668 in LTBI/HIV- (n = 19), aTB/HIV- (n = 19), LTBI/HIV+ (n = 18) and aTB/HIV+ (n = 16)
669 individuals. Bars represent the medians. **(C)** Distribution of Mtb-specific cytokine responses. Each
670 section of the pie chart represents median proportions of specific combinations of cytokines, as
671 indicated by the color at the bottom of the graph. The bars represent the median and interquartile
672 range. The dotted line is at 5%. Statistical comparisons were performed using a one-way ANOVA
673 Kruskal–Wallis test. * $p < 0.05$, ** $p < 0.01$, *** $p < 0.001$, **** $p < 0.0001$.

674

675 **Figure 6: Memory and activation profile of Mtb-specific CD4+ T cells in individuals with**
676 **distinct HIV and tuberculosis (TB) disease status.** **(A)** Memory phenotype and **(B)** HLA-DR
677 expression of IFN- γ , IL-22 and IL-17 producing CD4+ T cells in LTBI/HIV-, aTB/HIV-,
678 LTBI/HIV+ and aTB/HIV+ groups. Red bars represent the medians. Statistical comparisons were
679 performed using a one-way ANOVA Kruskal–Wallis test. * $p < 0.05$, ** $p < 0.01$, *** $p < 0.001$,
680 **** $p < 0.0001$.

681

682 **Supplemental Figure S1: Gating strategy.** Gating strategy used to determine the phenotype,
683 memory profile and functional properties of CD4⁺ T cells. NS: non-stimulated.

684

685 **Supplemental Figure S2: Comparison of CD4⁺ T cell frequencies detected using Mtb lysate,**
686 **gamma-irradiated Mtb, and BCG. (A)** Representative flow cytometry plots showing IFN- γ , IL-22
687 and IL-17 responses after stimulation of blood from healthy donors with Mtb lysate, gamma-
688 irradiated Mtb, and BCG. **(B)** Comparison of the frequency of IFN- γ , IL-22 and IL-17 after
689 stimulation with different antigens (n=5). **(C)** Comparison of the frequency of IFN- γ , IL-22 and IL-
690 17 when stimulated with ESAT-6/CFP-10 (n=11). Red bars represent the medians. Statistical
691 comparisons were performed using a one-way ANOVA Friedman test. *** $p < 0.001$.

FIGURE 1
Makatsa *et al.*

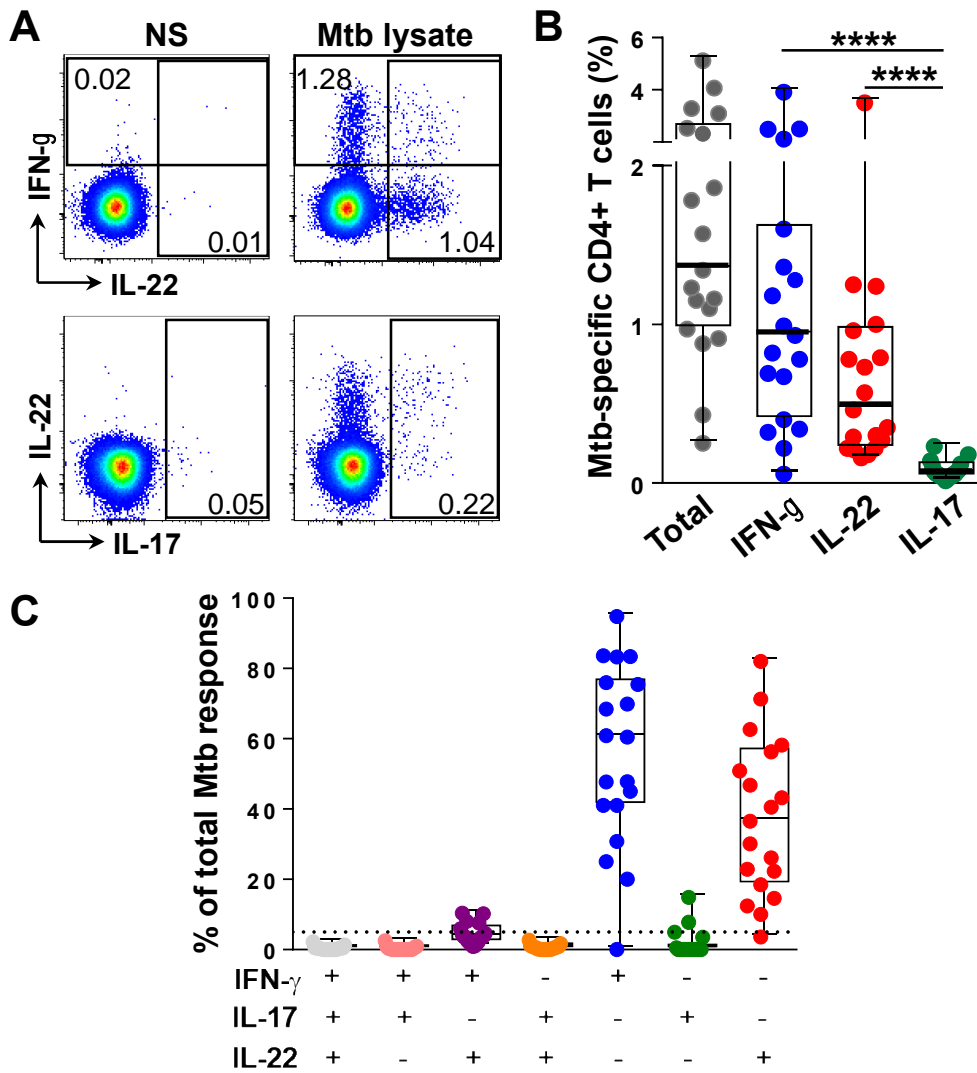


FIGURE 2
Makatsa *et al.*

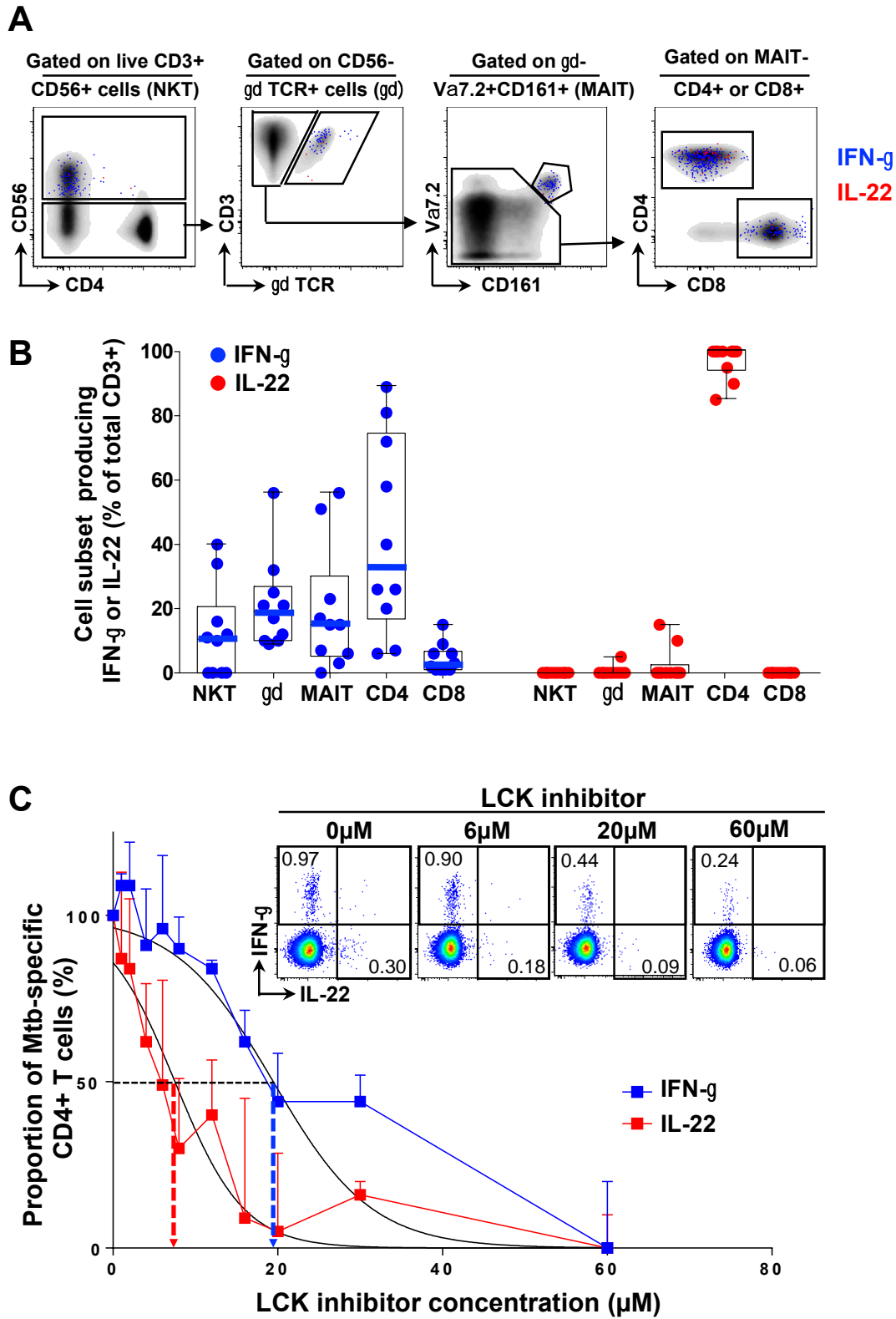


FIGURE 3
Makatsa *et al.*

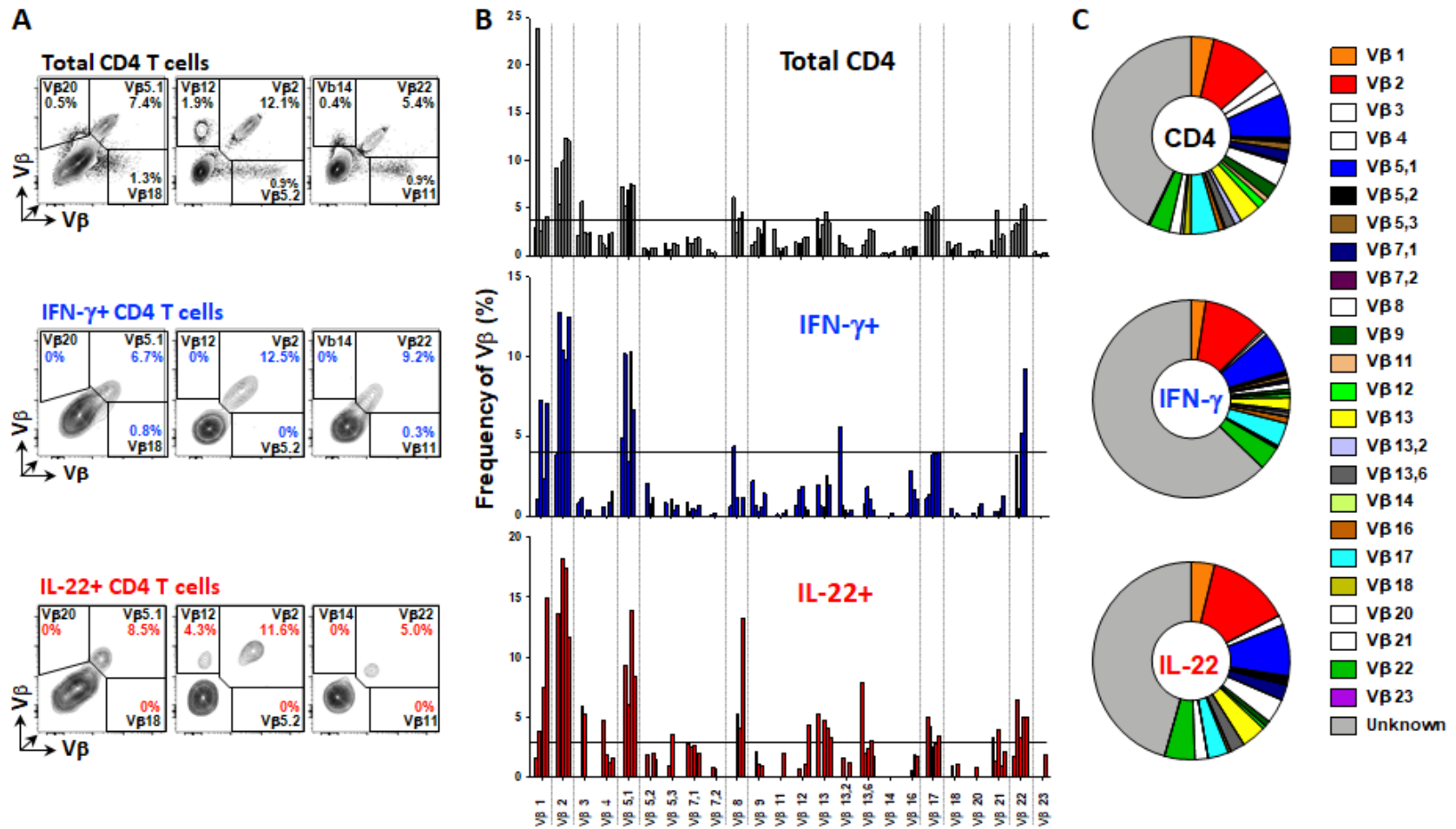


FIGURE 4
Makatsa *et al.*

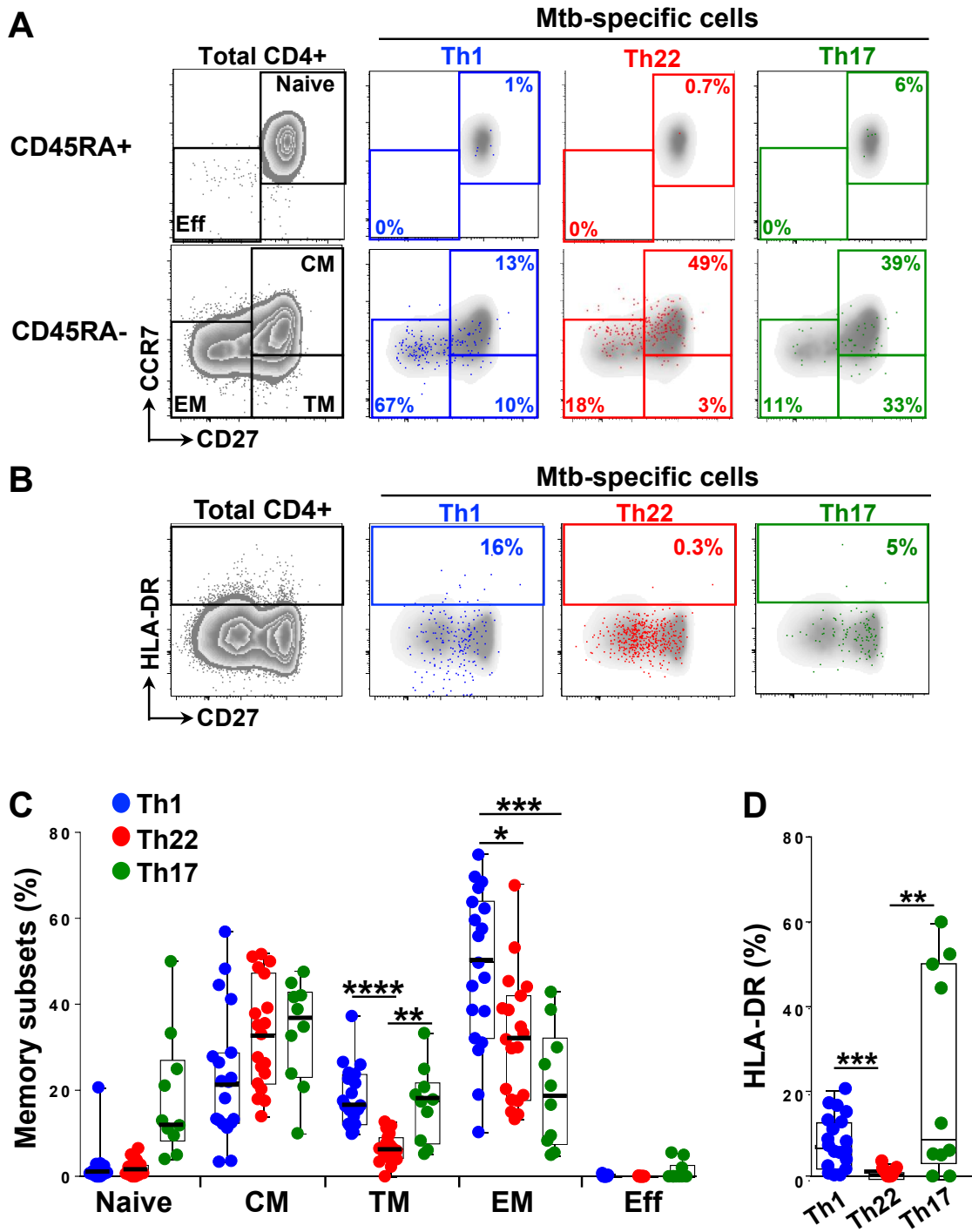
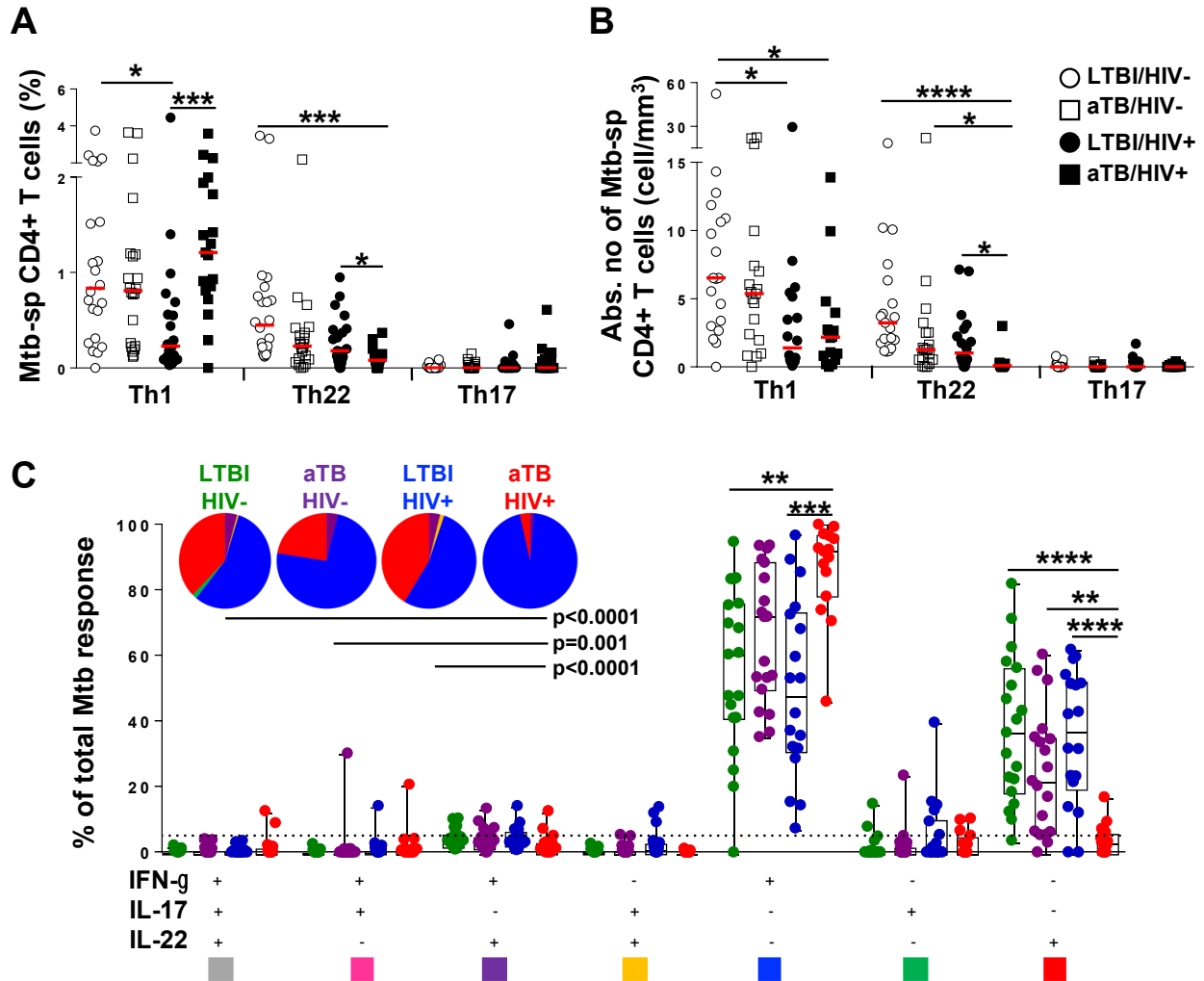
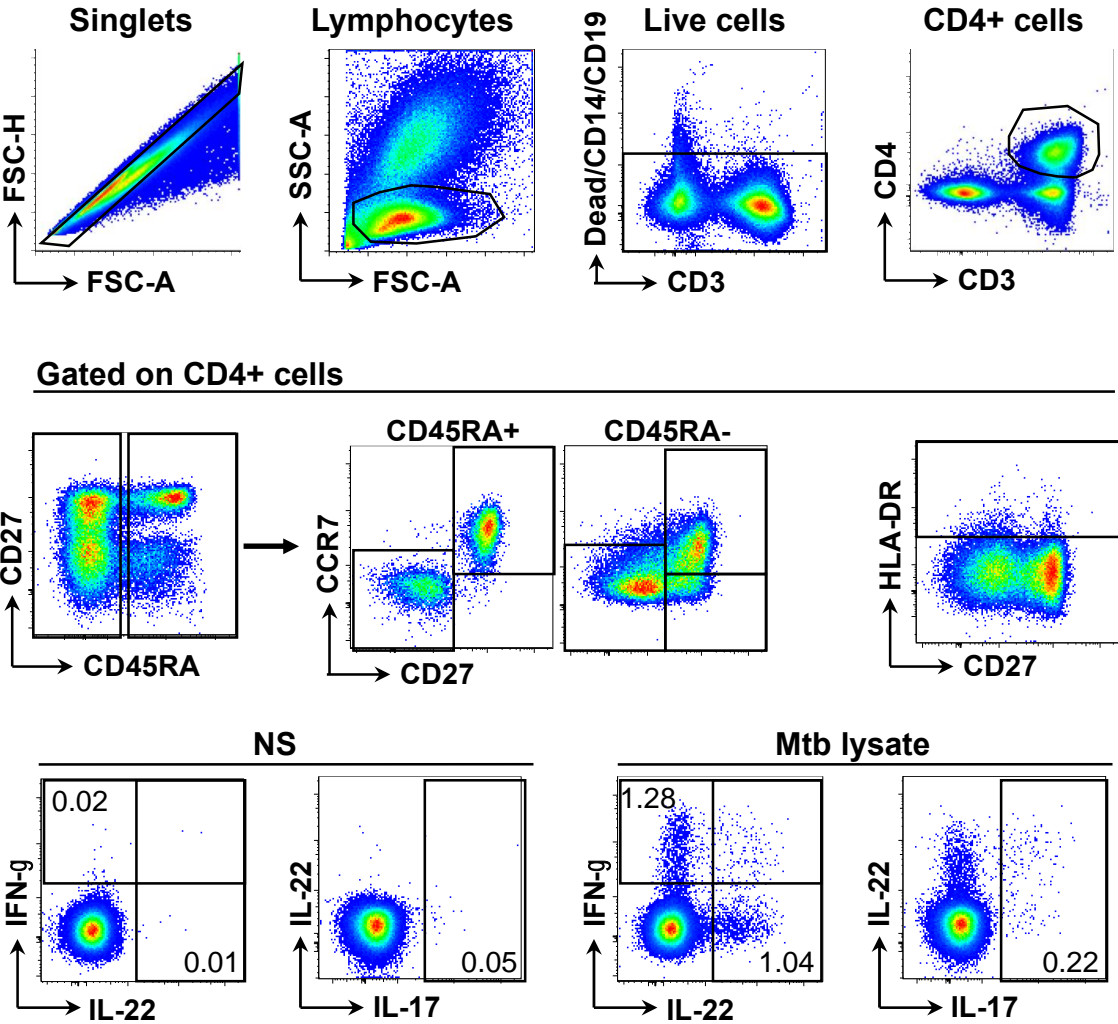


FIGURE 5
Makatsa et al.



Supplemental Figure 1
Makatsa et al.



Supplemental Figure 2
Makatsa *et al.*

