

BCG vaccination induces enhanced frequencies of memory T and B cells and dendritic cell subsets in elderly individuals

Nathella Pavan Kumar², Chandrasekaran Padmapriyadarsini², Anuradha Rajamanickam¹, Perumal Kannabiran Bhavani², Arul Nancy¹, Bharathi Jayadeepa², Nandhini Selveraj¹, Dinesh Kumar², Rachel Mariam Renji¹, Vijayalakshmi Venkataramani¹, Srikanth Tripathy² and Subash Babu¹

¹ICMR-National Institute for Research in Tuberculosis-International Center for Excellence in Research, Chennai, India and ² ICMR-National Institute for Research in Tuberculosis, Chennai, India,

Running title: BCG vaccination and immune responses

Correspondence and requests for reprints should be addressed to Subash Babu, NIRT-ICER and Nathella Pavan Kumar, ICMR-National Institute for Research in Tuberculosis, Chennai, India. E-mail: sbabu@nirt.res.in and pavankumarn@nirt.res.in Phone: 91-44-28369711/28369677

Potential conflicts of interest. All authors: No potential conflicts of interest.

Abstract

Background: BCG vaccination is known to induce innate immune memory, which confers protection against heterologous infections. However, the effect of BCG vaccination on the conventional innate and adaptive immune cells subsets is not well characterized.

Methods: We investigated the impact of BCG vaccination on the frequencies of T cell, B cell, monocyte and dendritic cell subsets as well as total antibody levels in a group of healthy elderly individuals (age 60-80 years) at one month post vaccination as part of our clinical study to examine the effect of BCG on COVID-19.

Results: Our results demonstrate that BCG vaccination induced enhanced frequencies of central and effector memory CD4⁺ T cells and diminished frequencies of naïve, transitional memory, stem cell memory CD4⁺ T cells and regulatory T cells. In addition, BCG vaccination induced enhanced frequencies of central, effector and terminal effector memory CD8⁺ T cells and diminished frequencies of naïve, transitional memory and stem cell memory CD8⁺T cells. BCG vaccination also induced enhanced frequencies of immature, classical and activated memory B cells and plasma cells and diminished frequencies of naïve and atypical memory B cells. While BCG vaccination did not induce significant alterations in monocytes subsets, it induced increased frequencies of myeloid and plasmacytoid DCs. Finally, BCG vaccination resulted in elevated levels of all antibody isotypes.

Conclusions: BCG vaccination was associated with enhanced innate and adaptive memory cell subsets, as well as total antibody levels in elderly individuals, suggesting its potential utility in SARS-Cov2 infection by enhancing heterologous immunity.

Funding: This work was supported by the Indian Council of Medical Research (ICMR). The funders had no role in study design, data collection and analysis, decision to publish, or preparation of the manuscript.

59

60

61 **Introduction**

62 Bacillus Calmette-Guerin (BCG) is a live – attenuated vaccine strain of Myobacterium
63 bovis that provides protection against mycobacterial infections such as tuberculosis and leprosy
64 and was first introduced in 1921 (1, 2). In addition to protective immunity to mycobacterial
65 infections, BCG is also known to protect against heterologous infections (the so-called off-target
66 or non – specific effects) (3, 4). Several epidemiological studies have shown a reduction in
67 childhood mortality in BCG vaccinated children as well as lower incidence of respiratory
68 infections (5-9). In addition, randomized controlled trials have shown that BCG vaccination
69 protects against childhood mortality mainly by providing protection against neonatal sepsis and
70 respiratory infections (10-12). The effect of BCG vaccination in protecting against heterologous
71 infections in adults and more specifically, elderly individuals is less well studied.

72 Two types of immune mechanisms have been postulated to explain this off-target or non
73 – specific effect of BCG against infections. First, BCG is known to induce CD4+ and CD8+
74 memory T cells in an antigen-independent manner but cytokine-dependent manner, and this
75 process is termed heterologous immunity (13-16). Second, BCG is known to induce a process
76 called trained immunity or innate immune memory in innate cells, especially monocytes and NK
77 cells, such that these cells can respond more actively to secondary or bystander infections (17,
78 18). However, whether these mechanisms are operational in elderly individuals, who are at
79 higher risk for infections due to waning immunity is not known.

80 Hence, we examined the induction of T cell, B cell, monocyte, and dendritic cell subsets
81 in response to BCG vaccination in elderly individuals at baseline and one-month post-
82 vaccination along with baseline frequencies in unvaccinated individuals. We also examined the

levels of antibody isotypes following vaccination. We demonstrate that BCG vaccination induces significantly enhanced memory T and B cell responses and increased frequencies of DC subsets, as well as total antibody levels, suggesting that BCG can potentially boost immune responses in a non-specific or off-target manner in these elderly individuals.

Results

Study population

The demographics of the study population are shown in Table I. From July 2020 through September 2020, 86 individuals were enrolled in the study with 54 in the vaccinated arm and 32 in the unvaccinated arm. All the vaccinated individuals were followed up at month 1 post-vaccination with no loss to follow-up. Median age was 65 (Range: 60-78) years in BCG vaccinated group and 63 years (Range: 60-80) in the unvaccinated group. There were 34 males and 20 females in the BCG vaccinated and 15 males and 17 females in unvaccinated group. In the enrolled population, 26% of BCG vaccinated and 15% of unvaccinated individuals had diabetes mellitus while 15% and 9% had cardiovascular disease respectively. In our cohort 4%-6% were current smokers and there were 6% were alcoholics. Other baseline characteristics were similar between the two arms.

BCG vaccination induces enhanced frequencies of central and effector memory CD4⁺ T cells and diminished frequencies of naïve, transitional, and stem cell memory CD4⁺ T cells

To assess the ex vivo phenotype of CD4⁺ T cell subsets following BCG vaccination, we compared the subsets at baseline or before BCG vaccination (M0) and at month 1 (M1) post-vaccination. As shown in Figure 1A, the frequencies of central and effector memory CD4⁺ T cell subsets were significantly enhanced and the frequencies of naïve, transitional, and stem cell memory CD4⁺ T cells and regulatory CD4⁺ T cells were significantly diminished at M1

compared to M0. Next, we compared the frequencies of CD4⁺ T cell subsets in post-vaccinated individuals to unvaccinated controls. As shown in Figure 1B, BCG vaccinated individuals exhibited increased frequencies of only central memory CD4⁺ T cells and decreased frequencies of naïve, effector memory, transitional memory, stem cell memory, and regulatory CD4⁺ T cells. A representative flow cytometry plot showing the gating strategy for CD4⁺ T cell subsets is shown in S. Figure 1. Thus, BCG vaccination induces enhanced frequencies of central and effector memory CD4⁺ T cells in elderly individuals.

BCG vaccination induces enhanced frequencies of central, effector, and terminal effector memory CD8⁺ T cells and diminished frequencies of naïve, transitional, and stem cell memory CD8⁺ T cells

To assess the ex vivo phenotype of CD8⁺ T cell subsets following BCG vaccination, we compared the subsets at baseline or before BCG vaccination (M0) and at month 1 (M1) post-vaccination. As shown in Figure 2A, the frequencies of central, effector, and terminal effector memory CD8⁺ T cell subsets were significantly enhanced and the frequencies of naïve, transitional, and stem cell memory CD8⁺ T cells were significantly diminished at M1 compared to M0. Next, we compared the frequencies of CD8⁺ T cell subsets in post-vaccinated individuals to unvaccinated controls. As shown in Figure 2B, BCG vaccinated individuals exhibited increased frequencies of central memory, effector memory, and terminal effector memory CD8⁺ T cells and decreased frequencies of naïve, transitional memory, and stem cell memory CD8⁺ T cells. A representative flow cytometry plot showing the gating strategy for CD8⁺ T cell subsets is shown in S. Figure 1. Thus, BCG vaccination induces enhanced frequencies of central, effector, and terminal effector memory CD8⁺ T cells in elderly individuals.

BCG vaccination induces enhanced frequencies of immature, classical memory and activated memory B cells and plasma cells and diminished frequencies of naïve and atypical memory B cells

To assess the ex vivo phenotype of B cell subsets following BCG vaccination, we compared the subsets at baseline or before BCG vaccination (M0) and at month 1 (M1) post-vaccination. As shown in Figure 3A, the frequencies of immature, classical memory and activated memory B cells and plasma cells were significantly enhanced and the frequencies of naïve and atypical memory B cells were significantly diminished at M1 compared to M0. Next, we compared the frequencies of B cell subsets in post-vaccinated individuals to unvaccinated controls. As shown in Figure 3B, BCG vaccinated individuals exhibited increased frequencies of immature, classical memory and activated memory B cells and plasma cells and decreased frequencies of naïve and atypical memory B cells. A representative flow cytometry plot showing the gating strategy for B cell subsets is shown in S. Figure 2. Thus, BCG vaccination induces enhanced frequencies of immature, classical, and activated memory B cells and plasma cells in elderly individuals.

BCG vaccination induces enhanced frequencies of myeloid and plasmacytoid DCs but no significant alterations in monocyte subsets

To assess the ex vivo phenotype of monocyte subsets following BCG vaccination, we compared the subsets at baseline or before BCG vaccination (M0) and at month 1 (M1) post-vaccination. As shown in Figure 4A, the frequencies of classical, intermediate, or non-classical monocytes were not significantly altered at M1 compared to M0 in BCG vaccinated individuals. Next, we compared the frequencies of monocyte subsets in post-vaccinated individuals to

unvaccinated controls. As shown in Figure 3B, BCG vaccinated individuals exhibited increased frequencies of only intermediate monocytes in comparison to unvaccinated controls. A representative flow cytometry plot showing the gating strategy for monocyte subsets is shown in S. Figure 3. Thus, BCG vaccination does not induce any significant alterations in the frequencies of monocyte subsets in elderly individuals.

To assess the ex vivo phenotype of DC subsets following BCG vaccination, we compared the subsets at baseline or before BCG vaccination (M0) and at month 1 (M1) post-vaccination. As shown in Figure 5A, the frequencies of myeloid and plasmacytoid DCs were significantly increased at M1 compared to M0 in BCG vaccinated individuals. Next, we compared the frequencies of DC subsets in post-vaccinated individuals to unvaccinated controls. As shown in Figure 5B, BCG vaccinated individuals exhibited increased frequencies of only both myeloid and plasmacytoid DCs in comparison to unvaccinated controls. A representative flow cytometry plot showing the gating strategy for DC subsets is shown in S. Figure 3. Thus, BCG vaccination induces enhanced frequencies of DC subsets in elderly individuals.

BCG vaccination induces increased levels of total IgG subtypes, IgA and IgM

To assess the levels of humoral responses induced by BCG vaccination, we measured IgG subtypes (IgG1, IgG2, IgG3, IgG4), IgA, and IgM in BCG vaccinated individuals at baseline (M0) and month 1 (M1) following BCG vaccination. As shown in Figure 6, BCG vaccination induces significantly increased levels of IgG1, IgG2, IgG3, IgG4, IgA, and IgM at M1 compared to M0. Therefore, BCG is a potent inducer of all antibody isotypes in elderly individuals.

Discussion

Typically, elderly individuals are at high risk of infectious diseases. In the context of COVID-19 disease, elderly individuals are one of the main target groups for morbidity and mortality. Several clinical trials are currently underway to examine the effect of BCG

vaccination in protecting health care workers and other individuals from SARS-CoV2 infection or disease (19-22). Very few studies are examining the protective effect of BCG vaccination against SARS-CoV2 in elderly individuals (21). The study to evaluate the effectiveness of the BCG vaccine in reducing morbidity and mortality in elderly individuals in COVID-19 hotspots in India undertaken by the Indian Council of Medical Research is one such study. As part of the study protocol, we examined the immune responses engendered by BCG vaccination in a group of elderly individuals. Previous studies in elderly individuals have shown that BCG vaccination protected against respiratory infections in Indonesia, Japan, and Europe (23-25).

Memory T cells are important in providing vaccine-induced protection against infections in elderly individuals (26). Memory CD4⁺ T cells induced by vaccination, especially central and effector memory CD4⁺ T cells, are involved in preventing varicella-zoster reactivation in older individuals (27, 28). Memory CD8⁺ T cells induced by vaccination, mainly central and effector memory CD8⁺ T cells, are involved in providing immunity against viral pathogens such as influenza and respiratory syncytial virus (29-32). While other CD4⁺ and CD8⁺ memory T cell subsets, including transitional memory, terminal effector memory, and stem cell memory subsets, have been postulated to play a role in infection and cancer (33-35), their exact role in vaccine-elicited human immune responses is still unclear. However, induction of vaccine-induced T cell responses is clearly impaired in elderly individuals (26). One potential mechanism is the expansion of regulatory CD4⁺ T cells, which are known to down modulate effector T cell responses against pathogens (36).

Our study clearly demonstrates the increased frequencies of both CD4⁺ and CD8⁺ central and effector memory T cells. In addition, terminal effector CD8⁺ T cell memory frequencies are also increased. This is associated with a decrease in the other CD4⁺ and CD8⁺ T cell subsets. Therefore, the heightened frequency of the central and effector memory T cell

compartment signifies a potential impact on the heterologous immunity and suggests that non-specific or bystander infections are more likely to be protected against in BCG vaccinated individuals. These data fit very well with the recent finding that BCG vaccination in elderly patients was associated with increased time to first infection and protection against viral respiratory pathogens (23). Moreover, BCG vaccination also diminishes the frequency of regulatory T cells and could therefore potentially blunt or ameliorate the regulatory effects of these cells in down modulating protective immune responses.

Most of the current vaccines rely on the induction of protective antibodies through the expansion of memory B cells and plasma cells. Memory B cells can be classified as classical memory, activated memory, and atypical memory B cells (37). While classical and activated memory B cells are important for the production of high affinity and broadly neutralizing antibodies (38), atypical memory B cells are exhausted B cells and fail to engender antibody production (39). Long-lived circulating plasma cells are the major source of vaccine-induced antibody production (40). Thus, our data demonstrate that BCG vaccination is likely to have major effects on the humoral immune response as it induces elevated frequencies of all major subsets of antibody-producing and antibody competent B cells. Our data also supports another mechanism for the off-target or non – specific effect of BCG vaccination, which is its ability to cause expansion of memory B cells and plasma cells. Indeed, the examination of different antibody isotypes reveals the presence of enhanced levels of IgG1, IgG2, IgG3, IgG4, IgA and IgM, indicating that humoral responses are significantly induced by BCG vaccination.

BCG vaccination is known to induce trained immunity or innate memory, mainly by inducing epigenetic modification of monocytes and enhancing their ability to mount cytokine responses to secondary pathogens (18). Our data show that BCG vaccination did not significantly modulate the frequencies of monocyte subsets in vaccinated individuals. Thus, the effect of BCG

on monocyte responses is unlikely to involve monocyte subset alterations. Activating the adaptive immune response requires the presentation of antigens to T cells by DC and macrophages (41). Delays in activation of DC could often result in a delay in the induction of the adaptive immune response to pathogens. Thus, methods to either increase the frequencies of DCs or to activate DCs would improve the protective efficacy of vaccines (42). Our data showing elevated frequencies of both mDC and pDC thus clearly illustrate an important effect of BCG vaccination in enhancing the innate immune response to both specific and non-specific pathogens (possibly) in elderly individuals. Moreover, while mDC is mainly involved in the process of antigen – presentation (43), pDC is the main source of Type 1 interferons in the host (44). Thus, it is potentially likely that increased frequencies of pDC might heighten the propensity of pDC to mount Type I IFN responses against pathogens encountered.

In summary, our study highlights the effect of BCG vaccination in modulating the frequencies of both innate and adaptive immune cell subsets. Our study also reveals an effect of BCG in inducing heightened total antibody levels. Although our study did not examine the functional effects of these changes in the immune system, our data nevertheless reveal an important role for BCG vaccination in boosting immune responses in the elderly population. Whether this translates to improved protective immunity to non – specific infections like SARS-CoV2 remains to be determined.

Materials and Methods

Ethics statement

The study was approved by the Ethics Committees of NIRT (NIRT-INo:2020010). Informed written consent was obtained from all participants. The study is part of the clinical study entitled, Study to evaluate the effectiveness of the BCG vaccine in reducing morbidity and mortality in elderly individuals in COVID-19 hotspots in India (NCT04475302).

250

251 **Study Population**

252 Elderly individuals, between 60 - 80 years of age, residing in hotspots for SARS-Cov2 infection
 253 were included in the study between July 2020 and September 2020 in Chennai, India after
 254 obtaining informed written consent from the study participants. . Elderly population positive for
 255 SARS-Cov2 infection by either antibody (serology) or PCR test; HIV infected or individuals
 256 with malignancy or on immunosuppressive drugs or transplant recipient and those on dialysis or
 257 anti-psychiatric medications or hypersensitivity to vaccinations were not included in the study.
 258 Also, those who were diagnosed with tuberculosis (TB) in the previous 6-months or were
 259 currently on anti-TB treatment were not included in the study.

260 54 participants received a single dose of BCG vaccine (Freeze-dried) manufactured by Serum
 261 Institute of India, Pune. The adult dose of BCG vaccine was 0.1 mL injected intradermally over
 262 the distal insertion of the deltoid muscle onto the left humerus (approximately one third down the
 263 left upper arm). In case of a previous vaccination scar, or presence of ulcer/injury or tattoo on
 264 the left upper arm, vaccination was given in the right upper arm. 32 elderly individuals from the
 265 same hotspot area were not vaccinated and were considered as controls. Blood was drawn from
 266 the vaccinated participants at baseline (before vaccination) and 1 month following vaccination.
 267 Blood was drawn from the controls only at baseline

268 **Ex vivo analysis**

269
 270 All antibodies used in the study were from BD Biosciences (San Jose, CA), BD Pharmingen
 271 (San Diego, CA), eBioscience (San Diego, CA), or R&D Systems (Minneapolis, MN). Whole
 272 blood was used for ex vivo phenotyping and it was performed on all 87 individuals. Briefly, to
 273 250µl aliquots of whole blood a cocktail of monoclonal antibodies specific for various immune
 274 cell types was added. T cell phenotyping was performed using antibodies directed against CD45-

275 Peridinin chlorophyll protein (PerCP), CD3- phycoerythrin (PE) Cy7, CD-8 AmCyan, CD28-
276 allophycocyanin (APC) H7, CD45RA-Pacific Blue, and CCR7-FITC and CD95- PE. Naive cells
277 were classified as CD45RA⁺ CCR7⁺ CD95⁻ CD28⁺, central memory cells (T_{CM}) as CD45RA⁻
278 CCR7⁺ CD95⁺ CD28⁺, effector memory cells (T_{EM}) as CD45RA⁻CCR7⁻ CD95⁺ CD28, Terminal
279 effector memory cells (T_{TEM}) as CD45RA⁻ CCR7⁻ CD95⁺ CD28⁻, stem cell memory (T_{SCM}) as
280 CD45RA⁺ CCR7⁺ CD95⁺ CD28⁺ and transitional memory cells (T_{TM}) as CD45RA⁺ CCR7⁻
281 CD95⁺ CD28⁺ (45). Regulatory T cell phenotyping was performed using CD3 APC-Cy-7, CD4
282 Amcyn, CD8 PerCP, CD25 APC, CD127 FITC, Foxp3 PE and regulatory T cells were
283 classified as CD4⁺ CD25⁺ Foxp3⁺ CD127dim (45). B cell phenotyping was performed using
284 antibodies directed against CD45-PerCP, CD19-Pacific Blue, CD27-APC-Cy7, CD21-FITC,
285 CD20-PE and CD10-APC. Naive B cells were classified as CD45⁺ CD19⁺ CD21⁺ CD27⁻;
286 classical memory B cells as CD45⁺ CD19⁺ CD21⁺ CD27⁺; activated memory B cells as CD45⁺
287 CD19⁺ CD21⁻ CD27⁺; atypical memory B cells as CD45⁺ CD19⁺ CD21⁻CD27⁻; immature B cells
288 as CD45⁺ CD19⁺ CD21⁺ CD10⁺; and plasma cells as CD45⁺ CD19⁺ CD21⁻ CD20⁻ (39).
289 Phenotyping of DC was performed using antibodies directed against HLA- DR, lineage cocktail
290 (CD3, CD14, CD16, CD19, CD20, CD56) FITC CD123-PE (clone 9F5; BD) CD11c- APC.
291 Plasmacytoid DCs were classified as (Lin⁻ HLA-DR⁺ CD123⁺) and myeloid DCs (Lin⁻ HLA-
292 DR⁺ CD11c⁺). Monocyte phenotyping was performed using antibodies directed against CD45-
293 PerCP, CD14-Pacific Blue, HLA-DR-PE-Cy7 (clone L243; BD), and CD16-APC- Cy7.
294 Classical monocytes were classified as CD45⁺ HLA-DR⁺ CD14^{hi} CD16⁻; intermediate
295 monocytes as CD45⁺ HLA-DR⁺ CD14^{hi} CD16^{dim} and non-classical monocytes were classified
296 as CD45⁺ HLA- DR⁺CD14^{dim}CD16^{hi}. Following 30 min of incubation at room temperature
297 erythrocytes were lysed using 2 ml of FACS lysing solution (BD Biosciences Pharmingen), and

cells were washed twice with 2 ml of 1XPBS and suspended in 200 µl of PBS (Lonza, Walkersville, MD). Eight- color flow cytometry was performed on a FACS Canto II flow cytometer with FACSDIVA software, version 6 (Becton Dickinson). The gating was set by forward and side scatter, and 100 000 gated events were acquired. Data were collected and analyzed using FLOW JO software (TreeStar, Ashland, OR). Leukocytes were gated using CD45 expression versus side scatter (46, 47).

Antibody Isotyping

Circulating plasma levels of IgG1, IgG2, IgG3, IgG4, IgA, and IgM were measured using Human Isotyping Assays (Bio-Rad-Bio-Plex Pro™) ELISA kits according to manufacturer's instruction.

Statistical analysis

Geometric means (GM) were used for measurements of central tendency. Wilcoxon signed-rank test was used to compare frequencies of immune subsets in the BCG vaccinated group at month 0 (M0) and month 1 (M1). Statistically significant differences between unvaccinated and BCG vaccinate M1 groups were analyzed using the Mann-Whitney test. Analyses were performed using Graph-Pad PRISM Version 8.0.

Author Contributions

Designed the study (S.B., C.P); conducted experiments (N.P.K., R.A., A.N., N.S., R.M.R, V.V); acquired data (N.P.K., R.A., A.N.); analyzed data (N.P.K., R.A); contributed reagents and also revised subsequent drafts of the manuscript (S.B., C.P); responsible for the enrolment of the participants and also contributed to acquisition and interpretation of clinical data (C.P., B.P.K., B.J., D.K., S.T); wrote the manuscript (S.B., N.P.K., C.P). All authors read and approved the final manuscript.

Acknowledgments. We thank the Director of the ICMR-NIRT, and staff of the Department of Clinical Research, NIRT. We thank the data entry operators Mr. Jaiganesh and Mr. Vigneshwaran, and also all the staff members of the ICER department for the timely help.

Funding: This work was supported by the Indian Council of Medical Research (ICMR). The funders had no role in study design, data collection, and analysis, decision to publish, or preparation of the manuscript.

Potential conflicts of interest. All authors: No potential conflicts of interest.

Data and materials availability. All the reported data are available within the manuscript

REFERENCES

1. Colditz GA, Brewer TF, Berkey CS, Wilson ME, Burdick E, Fineberg HV, et al. Efficacy of BCG vaccine in the prevention of tuberculosis. Meta-analysis of the published literature. *JAMA*. 1994;271(9):698-702.
2. Pai M, Behr MA, Dowdy D, Dheda K, Divangahi M, Boehme CC, et al. Tuberculosis. *Nat Rev Dis Primers*. 2016;2:16076.
3. Fritschi N, Curtis N, and Ritz N. Bacille Calmette Guerin (BCG) and new TB vaccines: Specific, cross-mycobacterial and off-target effects. *Paediatr Respir Rev*. 2020.
4. Moorlag S, Arts RJW, van Crevel R, and Netea MG. Non-specific effects of BCG vaccine on viral infections. *Clin Microbiol Infect*. 2019;25(12):1473-8.
5. Hirve S, Bavdekar A, Juvekar S, Benn CS, Nielsen J, and Aaby P. Non-specific and sex-differential effects of vaccinations on child survival in rural western India. *Vaccine*. 2012;30(50):7300-8.
6. Moulton LH, Rahmathullah L, Halsey NA, Thulasiraj RD, Katz J, and Tielsch JM. Evaluation of non-specific effects of infant immunizations on early infant mortality in a southern Indian population. *Trop Med Int Health*. 2005;10(10):947-55.
7. Roth A, Jensen H, Garly ML, Djana Q, Martins CL, Sodemann M, et al. Low birth weight infants and Calmette-Guerin bacillus vaccination at birth: community study from Guinea-Bissau. *Pediatr Infect Dis J*. 2004;23(6):544-50.
8. Kristensen I, Aaby P, and Jensen H. Routine vaccinations and child survival: follow up study in Guinea-Bissau, West Africa. *BMJ*. 2000;321(7274):1435-8.
9. Haahr S, Michelsen SW, Andersson M, Bjorn-Mortensen K, Soborg B, Wohlfahrt J, et al. Non-specific effects of BCG vaccination on morbidity among children in Greenland: a population-based cohort study. *Int J Epidemiol*. 2016;45(6):2122-30.
10. Biering-Sorensen S, Aaby P, Napirna BM, Roth A, Ravn H, Rodrigues A, et al. Small randomized trial among low-birth-weight children receiving bacillus Calmette-Guerin vaccination at first health center contact. *Pediatr Infect Dis J*. 2012;31(3):306-8.
11. Aaby P, Roth A, Ravn H, Napirna BM, Rodrigues A, Lisse IM, et al. Randomized trial of BCG vaccination at birth to low-birth-weight children: beneficial nonspecific effects in the neonatal period? *J Infect Dis*. 2011;204(2):245-52.
12. Roth A, Gustafson P, Nhaga A, Djana Q, Poulsen A, Garly ML, et al. BCG vaccination scar associated with better childhood survival in Guinea-Bissau. *Int J Epidemiol*. 2005;34(3):540-7.
13. Berg RE, Cordes CJ, and Forman J. Contribution of CD8+ T cells to innate immunity: IFN-gamma secretion induced by IL-12 and IL-18. *Eur J Immunol*. 2002;32(10):2807-16.
14. Berg RE, Crossley E, Murray S, and Forman J. Memory CD8+ T cells provide innate immune protection against *Listeria monocytogenes* in the absence of cognate antigen. *J Exp Med*. 2003;198(10):1583-93.
15. Lertmemongkolkhai G, Cai G, Hunter CA, and Bancroft GJ. Bystander activation of CD8+ T cells contributes to the rapid production of IFN-gamma in response to bacterial pathogens. *J Immunol*. 2001;166(2):1097-105.
16. Mathurin KS, Martens GW, Kornfeld H, and Welsh RM. CD4 T-cell-mediated heterologous immunity between mycobacteria and poxviruses. *J Virol*. 2009;83(8):3528-39.
17. Kleinnijenhuis J, Quintin J, Preijers F, Joosten LA, Ifrim DC, Saeed S, et al. Bacille Calmette-Guerin induces NOD2-dependent nonspecific protection from reinfection via epigenetic reprogramming of monocytes. *Proc Natl Acad Sci U S A*. 2012;109(43):17537-42.
18. Netea MG, Joosten LA, Latz E, Mills KH, Natoli G, Stunnenberg HG, et al. Trained immunity: A program of innate immune memory in health and disease. *Science*. 2016;352(6284):aaf1098.
19. Sallard E, Belhadi D, Lescure FX, Yazdanpanah Y, and Peiffer-Smadja N. Clinical trial protocols of repurposed prophylaxis for COVID-19: a review. *Med Mal Infect*. 2020.
20. Madsen AMR, Schaltz-Buchholzer F, Benfield T, Bjerregaard-Andersen M, Dalgaard LS, Dam C, et al. Using BCG vaccine to enhance non-specific protection of health care workers during the COVID-19 pandemic: A structured summary of a study protocol for a randomised controlled trial in Denmark. *Trials*. 2020;21(1):799.
21. Ten Doesschate T, Moorlag S, van der Vaart TW, Taks E, Debisarun P, Ten Oever J, et al. Two Randomized Controlled Trials of Bacillus Calmette-Guerin Vaccination to reduce absenteeism among health care workers and hospital admission by elderly persons during the COVID-19 pandemic: A structured summary of the study

- protocols for two randomised controlled trials. *Trials*. 2020;21(1):481.
22. Curtis N, Sparrow A, Ghebreyesus TA, and Netea MG. Considering BCG vaccination to reduce the impact of COVID-19. *Lancet*. 2020;395(10236):1545-6.
23. Giamarellos-Bourboulis EJ, Tsilika M, Moorlag S, Antonakos N, Kotsaki A, Dominguez-Andres J, et al. Activate: Randomized Clinical Trial of BCG Vaccination against Infection in the Elderly. *Cell*. 2020.
24. Ohnri T, Nakayama K, Fukushima T, Chiba H, and Sasaki H. [Prevention of elderly pneumonia by pneumococcal, influenza and BCG vaccinations]. *Nihon Ronen Igakkai Zasshi*. 2005;42(1):34-6.
25. Wardhana, Datau EA, Sultana A, Mandang VV, and Jim E. The efficacy of Bacillus Calmette-Guerin vaccinations for the prevention of acute upper respiratory tract infection in the elderly. *Acta Med Indones*. 2011;43(3):185-90.
26. Gustafson CE, Kim C, Weyand CM, and Goronzy JJ. Influence of immune aging on vaccine responses. *J Allergy Clin Immunol*. 2020;145(5):1309-21.
27. Levin MJ, Smith JG, Kaufhold RM, Barber D, Hayward AR, Chan CY, et al. Decline in varicella-zoster virus (VZV)-specific cell-mediated immunity with increasing age and boosting with a high-dose VZV vaccine. *J Infect Dis*. 2003;188(9):1336-44.
28. Levin MJ, Oxman MN, Zhang JH, Johnson GR, Stanley H, Hayward AR, et al. Varicella-zoster virus-specific immune responses in elderly recipients of a herpes zoster vaccine. *J Infect Dis*. 2008;197(6):825-35.
29. Schmidt ME, and Varga SM. The CD8 T Cell Response to Respiratory Virus Infections. *Front Immunol*. 2018;9:678.
30. Rossey I, Sedeyn K, De Baets S, Schepens B, and Saelens X. CD8+ T cell immunity against human respiratory syncytial virus. *Vaccine*. 2014;32(46):6130-7.
31. Grant EJ, Quinones-Parra SM, Clemens EB, and Kedzierska K. Human influenza viruses and CD8(+) T cell responses. *Curr Opin Virol*. 2016;16:132-42.
32. Zens KD, Chen JK, and Farber DL. Vaccine-generated lung tissue-resident memory T cells provide heterosubtypic protection to influenza infection. *JCI Insight*. 2016;1(10).
33. Gattinoni L, Speiser DE, Lichterfeld M, and Bonini C. T memory stem cells in health and disease. *Nat Med*. 2017;23(1):18-27.
34. Restifo NP, and Gattinoni L. Lineage relationship of effector and memory T cells. *Curr Opin Immunol*. 2013;25(5):556-63.
35. Kaeck SM, Wherry EJ, and Ahmed R. Effector and memory T-cell differentiation: implications for vaccine development. *Nat Rev Immunol*. 2002;2(4):251-62.
36. Josefowicz SZ, Lu LF, and Rudensky AY. Regulatory T cells: mechanisms of differentiation and function. *Annu Rev Immunol*. 2012;30:531-64.
37. Akkaya M, Kwak K, and Pierce SK. B cell memory: building two walls of protection against pathogens. *Nat Rev Immunol*. 2020;20(4):229-38.
38. Phan TG, and Tangye SG. Memory B cells: total recall. *Curr Opin Immunol*. 2017;45:132-40.
39. Portugal S, Obeng-Adjei N, Moir S, Crompton PD, and Pierce SK. Atypical memory B cells in human chronic infectious diseases: An interim report. *Cell Immunol*. 2017;321:18-25.
40. Khodadadi L, Cheng Q, Radbruch A, and Hiepe F. The Maintenance of Memory Plasma Cells. *Front Immunol*. 2019;10:721.
41. Hilligan KL, and Ronchese F. Antigen presentation by dendritic cells and their instruction of CD4+ T helper cell responses. *Cell Mol Immunol*. 2020;17(6):587-99.
42. Fucikova J, Palova-Jelinkova L, Bartunkova J, and Spisek R. Induction of Tolerance and Immunity by Dendritic Cells: Mechanisms and Clinical Applications. *Front Immunol*. 2019;10:2393.
43. Macri C, Pang ES, Patton T, and O'Keeffe M. Dendritic cell subsets. *Semin Cell Dev Biol*. 2018;84:11-21.
44. Leylek R, and Idoyaga J. The versatile plasmacytoid dendritic cell: Function, heterogeneity, and plasticity. *Int Rev Cell Mol Biol*. 2019;349:177-211.
45. Maecker HT, McCoy JP, and Nussenblatt R. Standardizing immunophenotyping for the Human Immunology Project. *Nat Rev Immunol*. 2012;12(3):191-200.
46. Rajamanickam A, Munisankar S, Dolla CK, and Babu S. Undernutrition is associated with perturbations in T cell-, B cell-, monocyte- and dendritic cell- subsets in latent Mycobacterium tuberculosis infection. *PLoS One*. 2019;14(12):e0225611.
47. Kumar NP, Moideen K, Dhakshinraj SD, Banurekha VV, Nair D, Dolla C, et al. Profiling leucocyte subsets in tuberculosis-diabetes co-morbidity. *Immunology*. 2015;146(2):243-50.

Figure legends:

Figure 1. BCG vaccination is associated with altered frequencies of CD4⁺ T cell memory subsets and regulatory cells

(A) Frequencies of CD4⁺ T cell subsets in BCG pre-vaccinated [M0] (n = 54) and month 1 following vaccination [M1] (n = 54). Data are shown as line diagrams with each line representing a single individual. P values were calculated using the Wilcoxon matched pair tests with Holms correction for multiple comparisons. (B) Frequencies of CD4⁺ T cell subsets in BCG unvaccinated (UVC) (n = 32) and post vaccinated [M1] (n = 54) individuals. The data are represented as scatter plots with each circle representing a single individual. P values were calculated using the Mann-Whitney test with Holm's correction for multiple comparisons.

Figure 2. BCG vaccination is associated with altered frequencies of CD8⁺ T cell memory subsets

(A) Frequencies of CD8⁺ T cell subsets in BCG pre-vaccinated [M0] (n = 54) and month 1 following vaccination [M1] (n = 54). Data are as shown line diagrams with each line representing a single individual. P values were calculated using the Wilcoxon matched pair tests with Holms correction for multiple comparisons. (B) Frequencies of CD8⁺ T cell subsets in BCG unvaccinated (UVC) (n = 32) and post vaccinated [M1] (n = 54) individuals. The data are represented as scatter plots with each circle representing a single individual. P values were calculated using the Mann-Whitney test with Holm's correction for multiple comparisons.

Figure 3. BCG vaccination is associated with altered frequencies of B cells subsets

(A) Frequencies of B cell subsets in BCG pre-vaccinated [M0] (n = 54) and month 1 following vaccination [M1] (n = 54). Data are as shown line diagrams with each line representing a single individual. P values were calculated using the Wilcoxon matched pair tests with Holms correction for multiple comparisons. (B) Frequencies of B cell subsets in BCG unvaccinated (UVC) (n = 32) and post vaccinated [M1] (n = 54) individuals. The data are represented as scatter plots with each circle representing a single individual. P values were calculated using the Mann-Whitney test with Holm's correction for multiple comparisons.

Figure 4. BCG vaccination is not associated with alteration in monocyte subsets

(A) Frequencies of monocyte (classical, intermediate and non-classical) subsets in BCG pre-vaccinated [M0] (n = 54) and month 1 following vaccination [M1] (n = 54). Data are as shown line diagrams with each line representing a single individual. P values were calculated using the Wilcoxon matched pair tests with Holms correction for multiple comparisons. (B) Frequencies of monocyte (classical, intermediate and non-classical) subsets in BCG unvaccinated (UVC) (n = 32) and post vaccinated [M1] (n = 54) individuals. The data are represented as scatter plots with each circle representing a single individual. P values were calculated using the Mann-Whitney test with Holm's correction for multiple comparisons.

Figure 5. BCG vaccination is associated with heightened frequencies of dendritic cell subsets

(A) Frequencies of dendritic cell (DC) subsets (plasmacytoid DC and myeloid DC) in BCG pre-vaccinated [M0] (n = 54) and month 1 following vaccination [M1] (n = 54). Data are as shown line diagrams with each line representing a single individual. P values were calculated using the

Wilcoxon matched pair tests with Holms correction for multiple comparisons. (B) Frequencies of dendritic cells (DC) subsets (plasmacytoid DC and myeloid DC) in BCG unvaccinated (UVC) (n = 32) and post vaccinated [M1] (n = 54) individuals. The data are represented as scatter plots with each circle representing a single individual. P values were calculated using the Mann-Whitney test with Holm's correction for multiple comparisons.

Figure 6. BCG vaccination is associated with heightened frequencies of IgG Isotypes

The plasma levels of IgG isotypes (IgG1, IgG2, IgG3, IgG4), IgA and IgM were measured in BCG pre-vaccinated [M0] (n = 54) and post vaccinated [M1] (n = 54) individuals. The data are represented as scatter plots with each circle representing a single individual. P values were calculated using the Mann-Whitney test with Holm's correction for multiple comparisons.

Supplementary Figure 1. Gating strategy for CD4+ and CD8+ T cell subsets. (A) A representative flow cytometry plot from an BCG vaccinated individual at month 0 showing the gating strategy for Naïve cells (T_N) were classified as $CD45RA^+ CCR7^+ CD95^- CD28^+$, central memory cells (T_{CM}) as $CD45RA^- CCR7^+ CD95^+ CD28^+$, effector memory cells (T_{EM}) as $CD45RA^- CCR7^- CD95^+ CD28^+$, Terminal effector memory cells (T_E) as $CD45RA^- CCR7^- CD95^+ CD28^-$, stem cell memory (T_{SCM}) as $CD45RA^+ CCR7^+ CD95^+ CD28^+$ and transitional memory cells (T_{TM}) as $CD45RA^+ CCR7^- CD95^+ CD28^+$. (B) Regulatory T cells were classified as $CD4^+ CD25^+ Foxp3^+ CD127^{dim}$

Supplementary Figure 2. Gating strategy for B cell subsets. (A) A representative flow cytometry plot from an BCG vaccinated individual at month 0 showing the gating strategy for naïve, immature, classical memory (CM), activated memory (AM), Atypical memory (ATM),

immature and plasma cells from CD45⁺ CD19⁺ cells. Naïve cells were classified as CD21⁺ CD27⁻; classical memory (CM) cells as CD21⁺ CD27⁺; activated memory (AM) cells as CD21⁻ CD27⁺; Atypical memory (ATM) cell as CD21⁻ CD27⁻; immature B cells as CD21⁺ CD10⁺; and plasma cells as CD21⁻ CD27⁻.

Supplementary Figure 3. Gating strategy for DC and monocyte subsets (A) A representative flow cytometry plot from an BCG vaccinated individual at month 0 showing the gating strategy for plasmacytoid (pDC) and myeloid DCs (mDC) Plasmacytoid DC were classified as (Lin⁻ HLA-DR⁺ CD123⁺) and myeloid DCs as (Lin⁻ HLA-DR⁺ CD11c⁺). (B) A representative flow cytometry plot showing the gating strategy for estimation of monocyte subsets. Classical monocytes were classified as CD45⁺ HLA-DR⁺ CD14^{hi}CD16⁻; intermediate monocytes as CD45⁺ HLA-DR⁺ CD14^{hi} CD16^{dim} and non-classical monocytes were classified as CD45⁺HLADR⁺ CD14^{dim}CD16^{hi}.

566 **Table I: Demographics of the study population**

	Vaccinated		Non- Vaccinated	pValue
Subjects Enrolled	n=54		n=32	
	Month 0 (n=54)	Month 1 (n=54)		
Age (Median)	65 (60 -78)		63 (60 -80)	NS
Gender (M/F)	34/20		15/17	NS
Height (Median)	160 cm		155 cm	NS
Weight (Median)	62 Kg		63 Kg	NS
Pulse rate (Median)	86		88	NS
Systolic Blood Pressure (Median)	132		140	NS
Diastolic Blood Pressure (Median)	81		80	NS
SPOS% (Median)	98		98	NS
Diabetes Mellitus no. (%)	14 (26 %)		5 (15 %)	NS
Smoking, no. (%)	2 (4 %)		2 (6 %)	NS
Alcoholism, no. (%)	3 (6 %)		2 (6 %)	NS
Cardiovascular Disease, no. (%)	8 (15 %)		3 (9 %)	NS
Respiratory Diseases, no. (%)	5 (9 %)		2 (6%)	NS
Mucoskeletal Disease, no. (%)	0		0	NS
Gastrointertinal, no. (%)	2 (4 %)		0	NS
Genitourinary, no. (%)	2 (4 %)		1 (3 %)	NS
Endocrine, no. (%)	20 (37%)		9 (28 %)	NS
Hematological, no. (%)	0		0	NS
Neoplasia, no. (%)	0		0	NS
Dermatological, no. (%)	4 (8 %)		1 (3 %)	NS
Neurological, no. (%)	0		1 (3 %)	NS
Psychological, no. (%)	0		0	NS
Allergies, no. (%)	1 (2 %)		0	NS

567
568
569

570

571

572
573
574
575
576
577
578
579
580

581
582
583
584
585
586
587
588
589
590
591

Figure.1

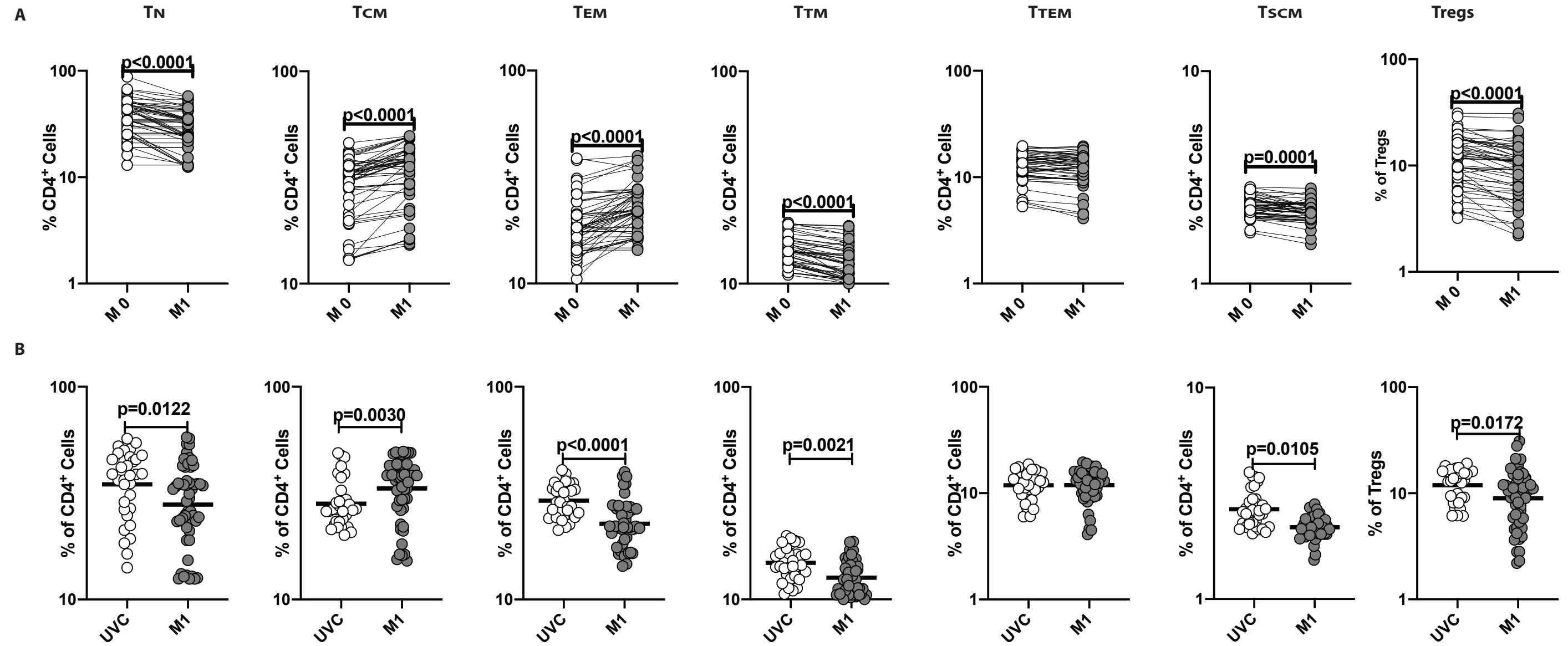


Figure 1. BCG vaccination is associated with altered frequencies of CD4⁺ T cell memory subsets and regulatory cells: (A) Frequencies of CD4⁺ T cell subsets in BCG pre-vaccinated [M0] (n = 54) and month 1 following vaccination [M1] (n = 54). Data are shown as line diagrams with each line representing a single individual. P values were calculated using the Wilcoxon matched pair tests with Holms correction for multiple comparisons. (B) Frequencies of CD4⁺ T cell subsets in BCG unvaccinated (UVC) (n = 32) and post vaccinated [M1] (n = 54) individuals. The data are represented as scatter plots with each circle representing a single individual. P values were calculated using the Mann-Whitney test with Holm's correction for multiple comparisons.

Figure.2

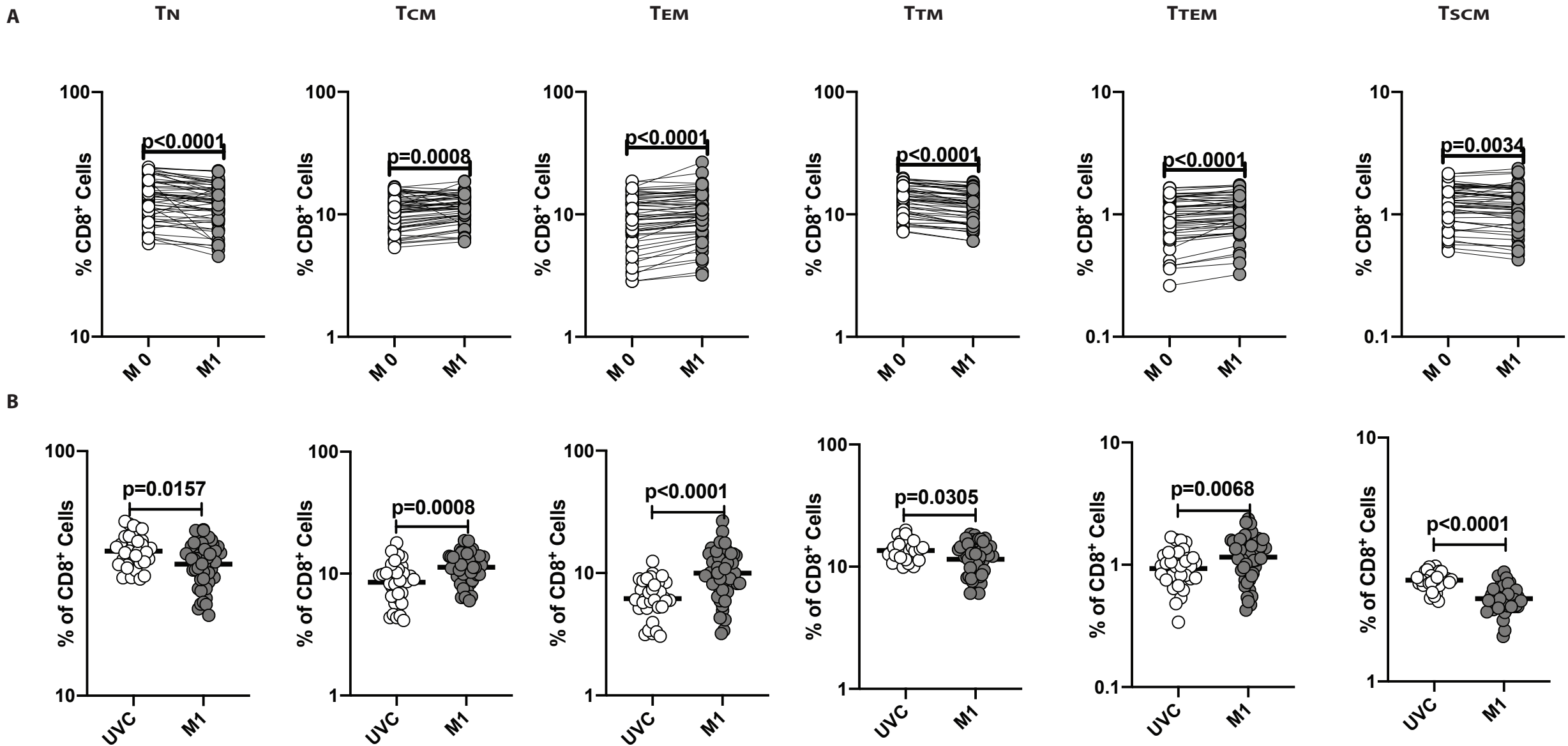


Figure 2. BCG vaccination is associated with altered frequencies of CD8⁺ T cell memory subsets : (A) Frequencies of CD8⁺ T cell subsets in BCG pre-vaccinated [M0] (n = 54) and month 1 following vaccination [M1] (n = 54). Data are as shown line diagrams with each line representing a single individual. P values were calculated using the Wilcoxon matched pair tests with Holms correction for multiple comparisons. (B) Frequencies of CD8⁺ T cell subsets in BCG unvaccinated (UVC) (n = 32) and post vaccinated [M1] (n = 54) individuals. The data are represented as scatter plots with each circle representing a single individual. P values were calculated using the Mann-Whitney test with Holm's correction for multiple comparisons.

Figure.3.

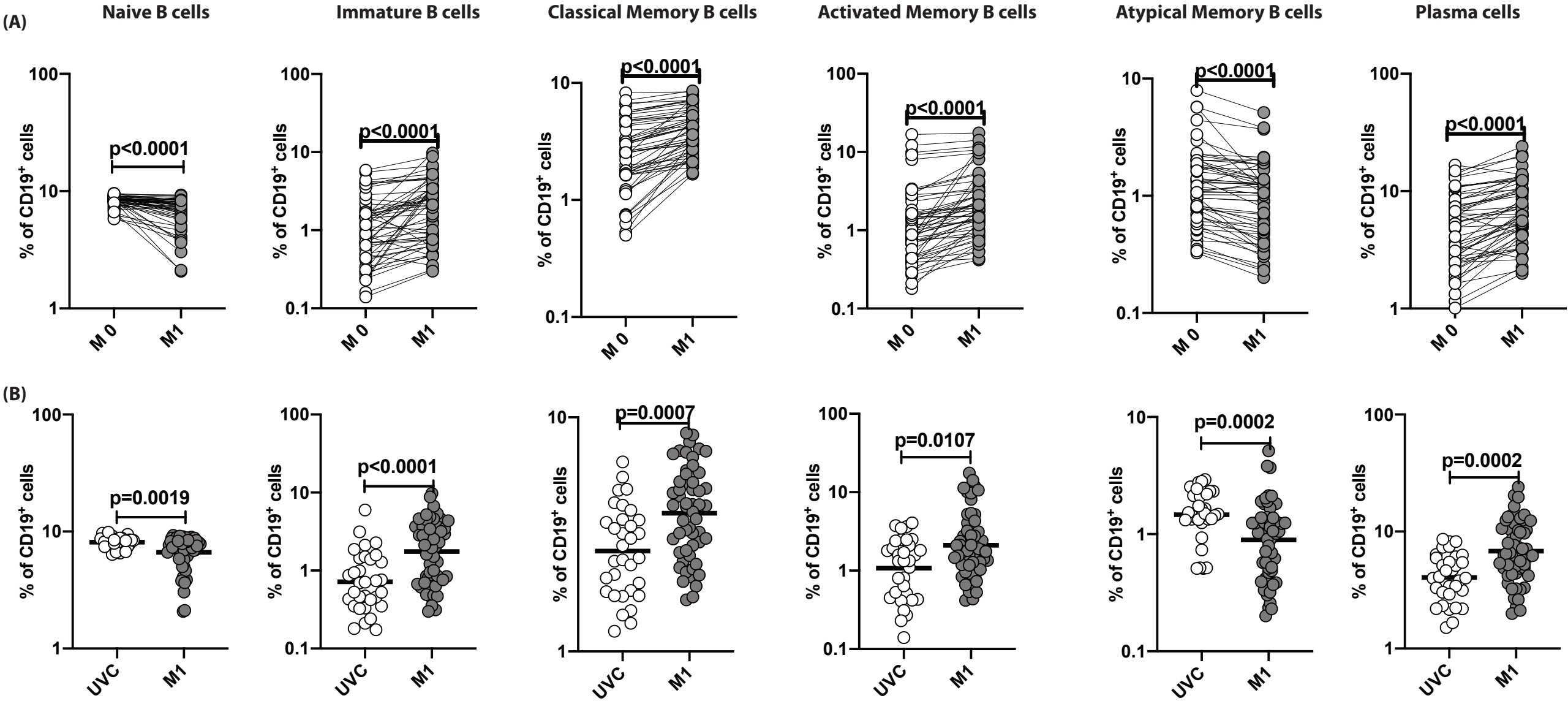


Figure 3. BCG vaccination is associated with altered frequencies of B cells subsets : (A) Frequencies of B cell subsets in BCG pre-vaccinated [M0] (n = 54) and month 1 following vaccination [M1] (n = 54). Data are as shown line diagrams with each line representing a single individual. P values were calculated using the Wilcoxon matched pair tests with Holms correction for multiple comparisons. (B) Frequencies of B cell subsets in BCG unvaccinated (UVC) (n = 32) and post vaccinated [M1] (n = 54) individuals. The data are represented as scatter plots with each circle representing a single individual. P values were calculated using the Mann-Whitney test with Holm's correction for multiple comparisons.

Figure.4

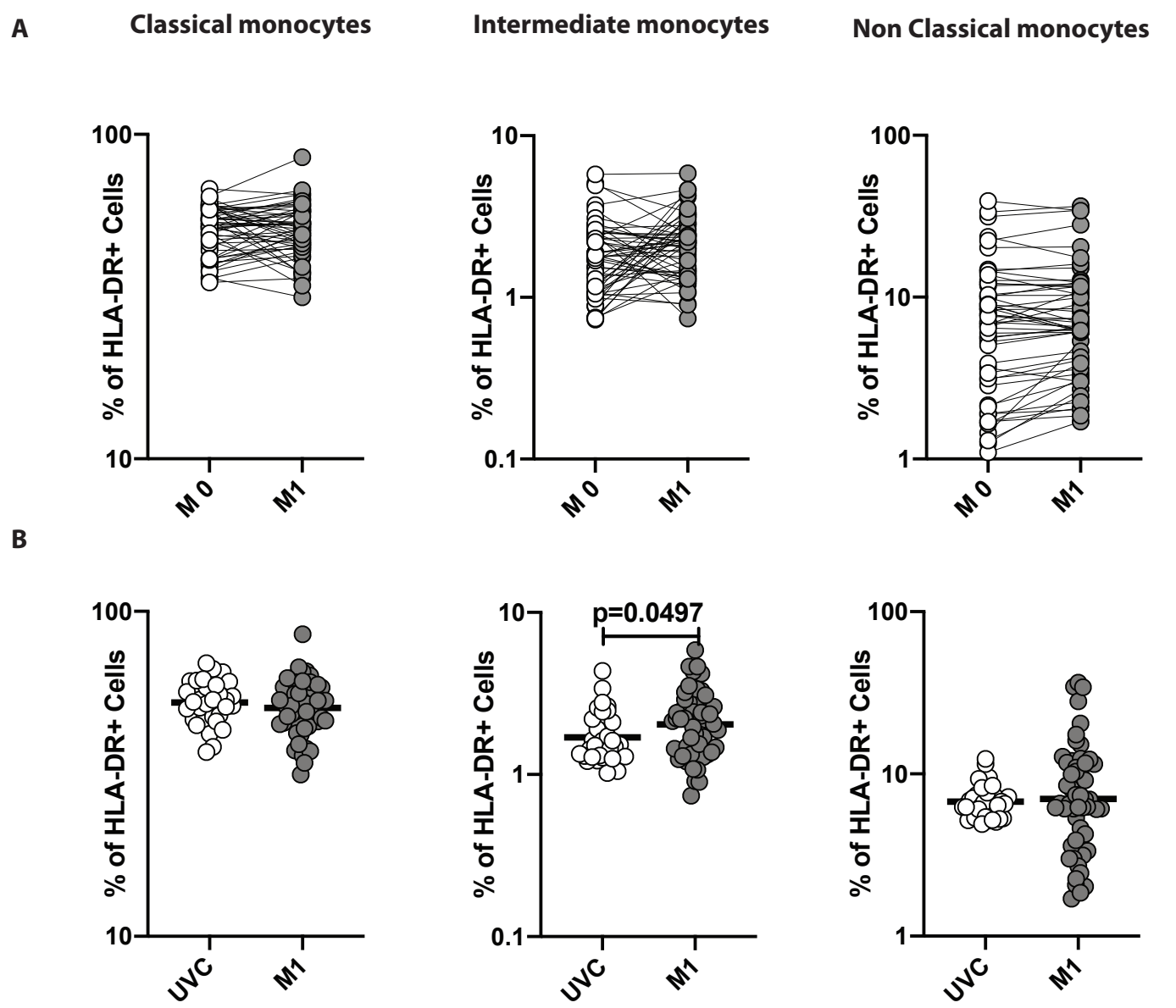


Figure 4. BCG vaccination is not associated with alteration in monocyte subsets: (A) Frequencies of monocyte (classical, intermediate and non-classical) subsets in BCG pre-vaccinated [M0] (n = 54) and month 1 following vaccination [M1] (n = 54). Data are as shown line diagrams with each line representing a single individual. P values were calculated using the Wilcoxon matched pair tests with Holms correction for multiple comparisons. (B) Frequencies of monocyte (classical, intermediate and non-classical) subsets in BCG unvaccinated (UVC) (n = 32) and post vaccinated [M1] (n = 54) individuals. The data are represented as scatter plots with each circle representing a single individual. P values were calculated using the Mann-Whitney test with Holm's correction for multiple comparisons.

Figure.5

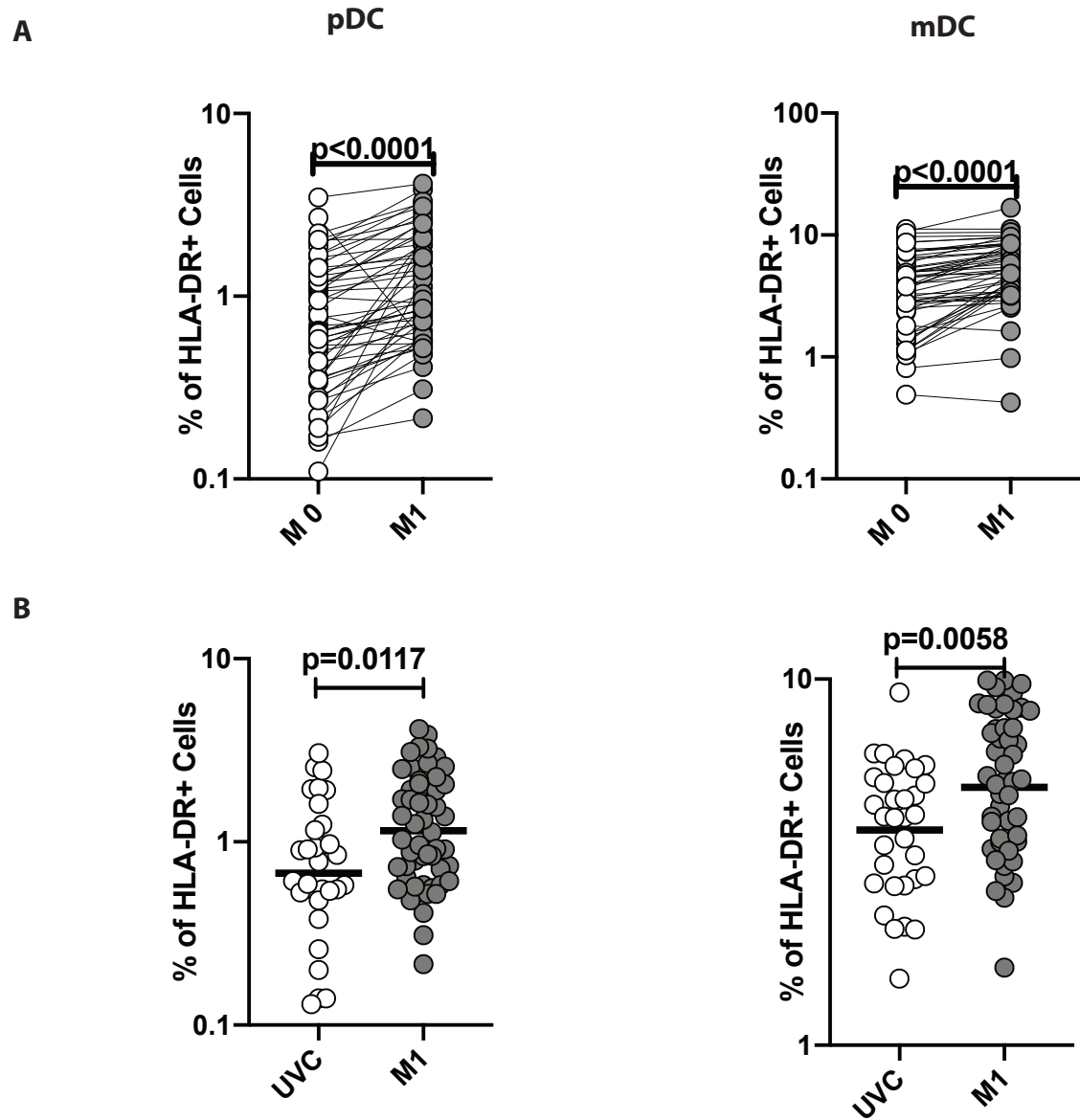


Figure 5. BCG vaccination is associated with heightened frequencies of dendritic cell subsets: (A) Frequencies of dendritic cell (DC) subsets (plasmacytoid DC and myeloid DC) in BCG pre-vaccinated [M0] (n = 54) and month 1 following vaccination [M1] (n = 54). Data are as shown line diagrams with each line representing a single individual. P values were calculated using the Wilcoxon matched pair tests with Holms correction for multiple comparisons. (B) Frequencies of dendritic cells (DC) subsets (plasmacytoid DC and myeloid DC) in BCG unvaccinated (UVC) (n = 32) and post vaccinated [M1] (n = 54) individuals. The data are represented as scatter plots with each circle representing a single individual. p values were calculated using the Mann-Whitney test with Holm's correction for multiple comparisons.

Figure.6.

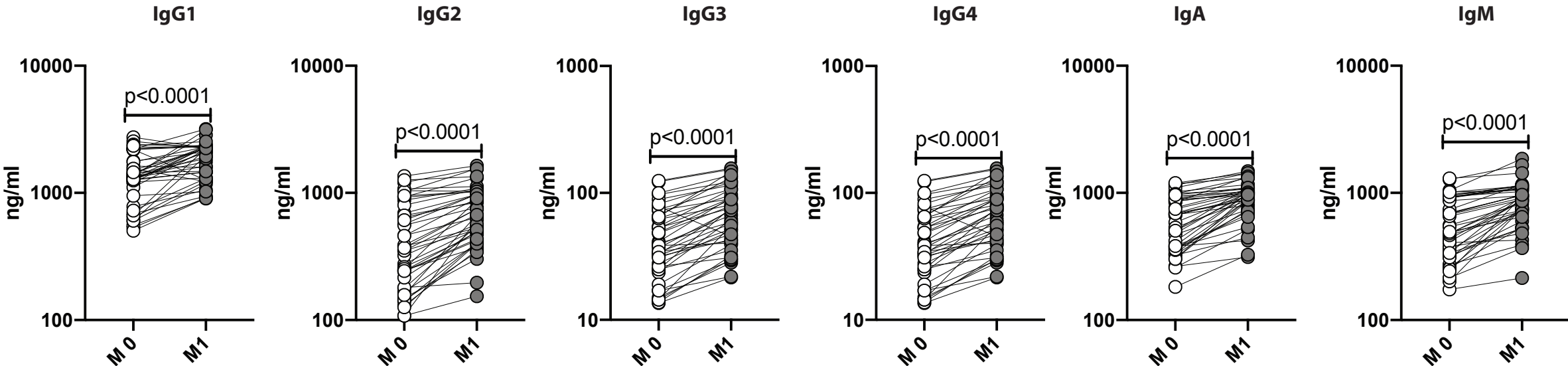
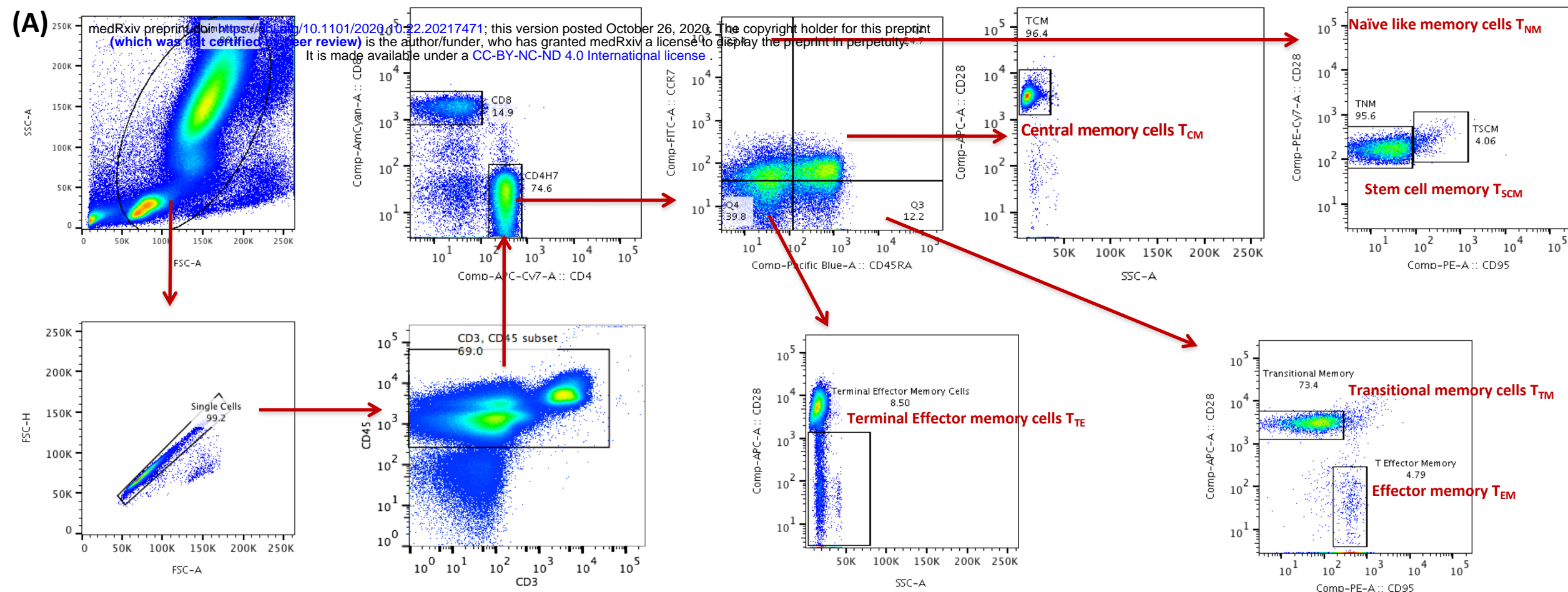


Figure 6. BCG vaccination is associated with heightened frequencies of IgG Isotypes: The plasma levels of IgG isotypes (IgG1, IgG2, IgG3, IgG4), IgA and IgM were measured in BCG pre-vaccinated [M0] (n = 54) and post vaccinated [M1] (n = 54) individuals. The data are represented as scatter plots with each circle representing a single individual. P values were calculated using the Mann-Whitney test with Holm's correction for multiple comparisons.

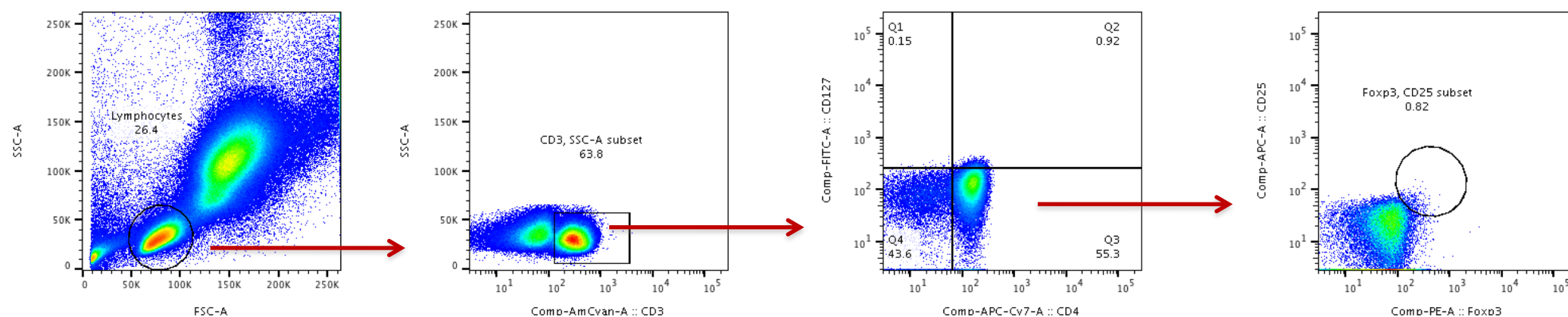
S. Fig.1.

Gating Strategy for T cell memory subsets



(B)

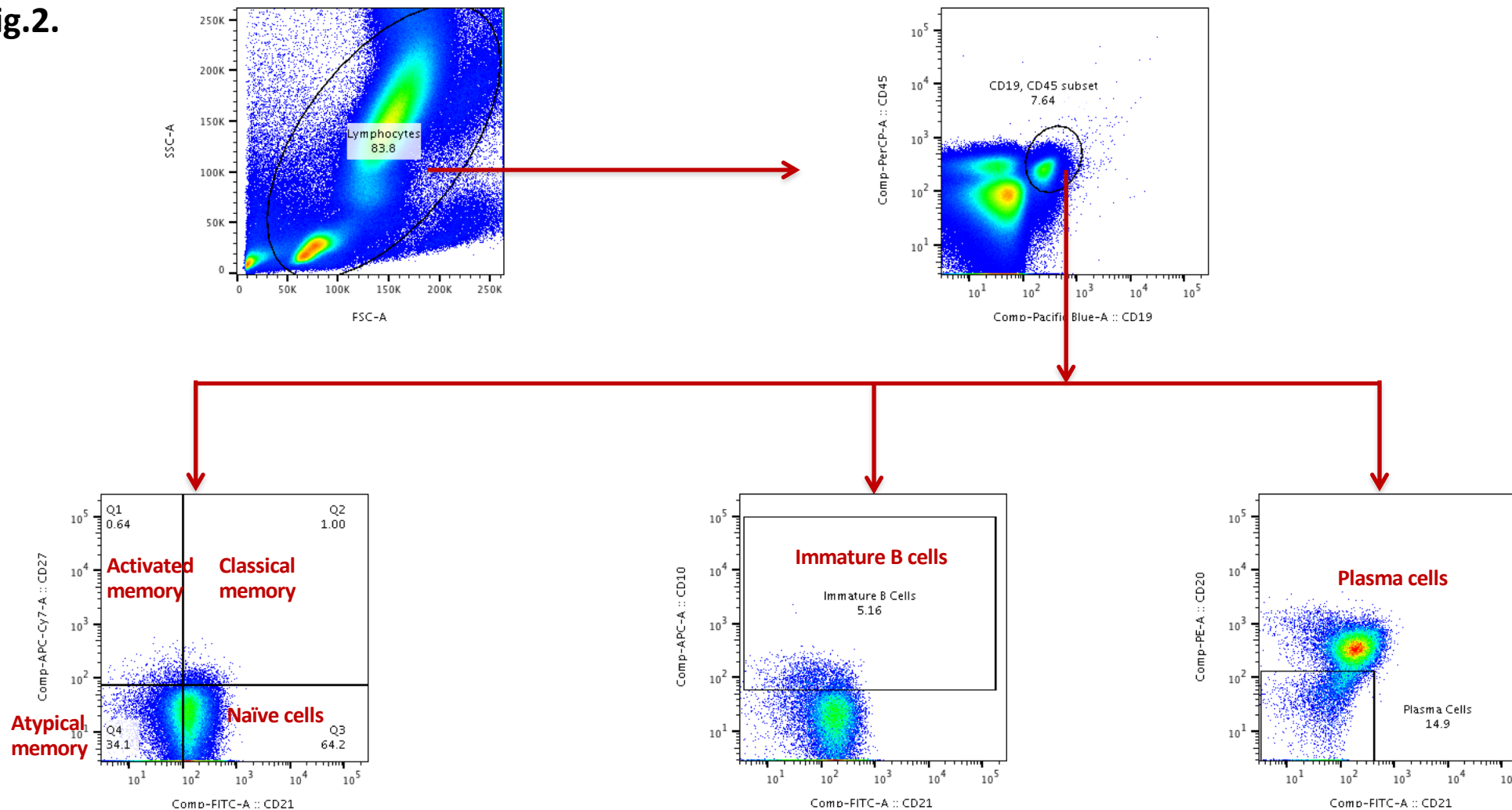
Gating Strategy for Tregs



Supplementary Figure 1. Gating strategy for CD4⁺ and CD8⁺ T cell subsets. (A) A representative flow cytometry plot from an BCG vaccinated individual at month 0 showing the gating strategy for Naïve cells (T_N) were classified as CD45RA⁺ CCR7⁺ CD95⁻ CD28⁺, central memory cells (T_{CM}) as CD45RA⁻ CCR7⁺ CD95⁺ CD28⁺, effector memory cells (T_{EM}) as CD45RA⁻ CCR7⁻ CD95⁺ CD28⁻, Terminal effector memory cells (T_E) as CD45RA⁻ CCR7⁻ CD95⁺ CD28⁻, stem cell memory (T_{SCM}) as CD45RA⁺ CCR7⁺ CD95⁺ CD28⁺ and transitional memory cells (T_{TM}) as CD45RA⁺ CCR7⁻ CD95⁺ CD28⁺. (B) Regulatory T cells were classified as CD4⁺ CD25⁺ Foxp3⁺ CD127^{dim}

Gating Strategy for B Cell Subsets

S. Fig.2.

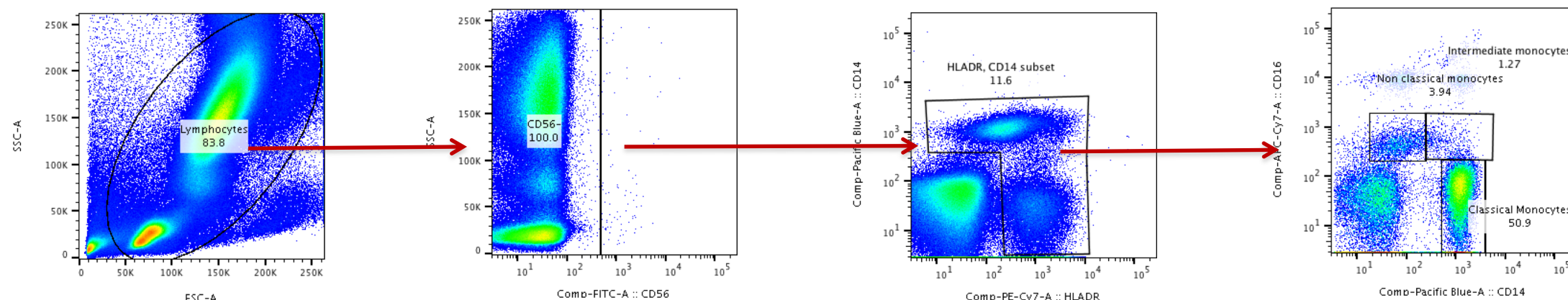


Supplementary Figure 2. Gating strategy for B cell subsets. (A) A representative flow cytometry plot from an BCG vaccinated individual at month 0 showing the gating strategy for naïve, immature, classical memory (CM), activated memory (AM), Atypical memory (ATM), immature and plasma cells from CD45⁺ CD19⁺ cells. Naïve cells were classified as CD21⁺ CD27⁻; classical memory (CM) cells as CD21⁺ CD27⁺; activated memory (AM) cells as CD21⁻ CD27⁺; Atypical memory (ATM) cell as CD21⁻ CD27⁻; immature B cells as CD21⁺ CD10⁺; and plasma cells as CD21⁻ CD27⁻.

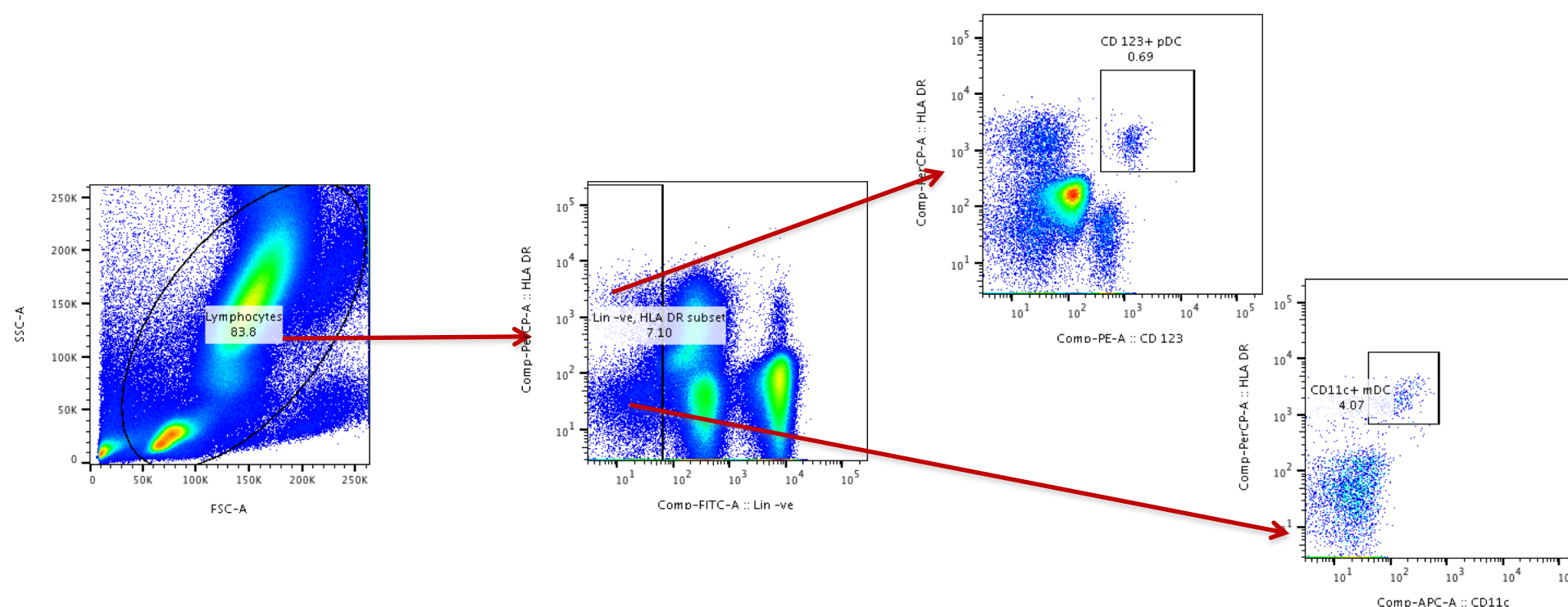
S. Fig.3.

Gating Strategy for DC and Monocyte subsets

(A)



(B)



Supplementary Figure 3. Gating strategy for DC and monocyte subsets (A) A representative flow cytometry plot from an BCG vaccinated individual at month 0 showing the gating strategy for plasmacytoid (pDC) and myeloid DCs (mDC) Plasmacytoid DC were classified as (Lin⁻ HLA-DR⁺ CD123⁺) and myeloid DCs as (Lin⁻ HLA-DR⁺ CD11c⁺). (B) A representative flow cytometry plot showing the gating strategy for estimation of monocyte subsets. Classical monocytes were classified as CD45⁺ HLA-DR⁺ CD14^{hi}CD16⁻; intermediate monocytes as CD45⁺ HLA-DR⁺ CD14^{hi} CD16^{dim} and non-classical monocytes were classified as CD45⁺HLADR⁺ CD14^{dim}CD16^{hi}.