

1 **Effect of park use and landscape structure on** 2 **COVID-19 transmission rates**

3 Thomas F. Johnson¹, Lisbeth A. Hordley¹, Matthew P. Greenwell¹, Luke C. Evans¹

4 ¹: Ecology and Evolutionary Biology, School of Biological Sciences, University of Reading, Reading, UK

5 Corresponding author: Thomas Frederick Johnson (Thomas.frederick.johnson@outlook.com)

6 **Abstract**

7 The COVID-19 pandemic has had severe impacts on global public health. In the UK, social
8 distancing measures and a nationwide lockdown were introduced to reduce the spread of
9 the virus. Green space accessibility may have been particularly important during this
10 lockdown, as it could have provided benefits for physical and mental wellbeing, while also
11 limiting the risk of transmission. However, the effects of public green space use on the rate
12 of COVID-19 transmission are yet to be quantified, and as the size and accessibility of green
13 spaces vary within local authorities, the risks and benefits to the public of using green space
14 may well be context-dependent. To evaluate how green space affected COVID-19
15 transmission across 98 local authorities in England, we first split case rates into two periods,
16 the pre-peak rise and the post-peak decline in cases, and assessed how baseline health
17 and mobility variables influenced these rates. Next, looking at the residual case rates, we
18 investigated how landscape structure (e.g. area and patchiness of green space) and park
19 use influenced transmission. We first show that pre- and post-peak case rates were
20 significantly reduced when overall mobility was low, especially in areas with high population
21 clustering, and high population density during the post-peak period only. After accounting for
22 known mechanisms behind transmission rates, we found that park use (showing a
23 preference for park mobility) decreased residual pre-peak case rates, especially when green
24 space was low and contiguous (not patchy). Whilst in the post-peak period, park use and
25 green landscape structure had no effect on residual case rates. Our results show that
26 utilising green spaces rather than other activities (e.g. visiting shops and workplaces) can

27 reduce the transmission rate of COVID-19, especially during an exponential phase of
28 transmission.

29 **Keywords**

30 COVID; coronavirus; ecosystem services; fragmentation; green space; health; park use;
31 public health

32 **Introduction**

33 The COVID-19 pandemic has had severe impacts on public health (Mahase, 2020) and
34 remains an emergency of international concern. In response to the pandemic, the UK
35 government implemented social distancing measures and a nationwide lockdown to control
36 the spread of the virus (Gov, 2020). During this period, the general public was limited in the
37 distances they could travel and the number of times they could leave their residence each
38 day; with an allowance of one non-essential trip during the peak of transmission (Gov, 2020).
39 This restriction meant that members of the public were unusually reliant on amenity spaces
40 close to their residences for daily exercise and/or recreation. Green spaces may provide a
41 comparatively safe place for these activities, though the amount and structure of green
42 space available for public use differs widely across the UK. Here we evaluate if differences
43 in the availability and structure of public green space within local authorities in England
44 influenced the local rate of incidence of COVID-19.

45 Green spaces, which we define as vegetated non-arable areas - see Taylor & Hochuli (2017)
46 for further details - provide important cultural ecosystem services, benefiting both mental and
47 physical health (Beyer et al., 2014; Cohen-Cline, Turkheimer, & Duncan, 2015). These
48 benefits are usually considered in terms of reducing the prevalence or severity of conditions
49 such as mental stress (Nutsford, Pearson, & Kingham, 2013) or cardiovascular disease
50 (Seo, Choi, Kim, Kim, & Park, 2019). Green spaces could also have important effects on an
51 acute stressor such as a disease pandemic, though, to date, these effects have not been
52 well explored. COVID-19 has properties that make it a unique case-study of the influence of

53 green space on health outcomes during a disease pandemic as 1) lockdown measures
54 meant that access to green space was necessarily local, and so any relationship between
55 green space and case-number was less likely to be confounded by travel outside of a local
56 authority; 2) the disease was prevalent nationwide, affording a comparison between a large
57 number of local authorities that differed in both case-numbers and green space access.

58 Possible effects of green space on COVID-19 incidence could be from two causes: general
59 health and wellbeing, and transmission. It is conceivable that general health and well-being
60 is greater in areas with more green space as higher levels of green space are associated
61 with healthier populations (Maas, Verheij, Groenewegen, De Vries, & Spreeuwenberg, 2006;
62 Mitchell & Popham, 2007; van den Berg et al., 2015). As COVID-19 has a greater impact on
63 those with underlying health conditions and sedentary lifestyles (Hamer, Kivimäki, Gale, &
64 Batty, 2020; Jordan, Adab, & Cheng, 2020), green space may, therefore, indirectly provide
65 some level of resilience to the disease and/or reduce incidence. However, as COVID-19 is a
66 novel highly infectious disease, the main effects of green space are likely to be related to
67 transmission probabilities. So far, evidence suggests that COVID-19 is transmitted via
68 droplet infection, contact with contaminated individuals or surfaces, and potentially through
69 aerosol transmission (Bahl et al., 2020). Green spaces are amenity areas where these risks
70 are likely minimised as they are typically less spatially confined and have fewer surfaces
71 prone to frequent touching or contact. Consequently, incidence could be higher in areas
72 where green space is limited as recreation, however limited, may take place in alternative
73 amenity spaces such as retail areas, with larger densities of people and more frequent
74 contact with surfaces.

75 Both the structure and amount of green space vary between local authorities, and both could
76 influence COVID-19 incidence. Generally, it has been found that greater health benefits are
77 derived from larger areas of green space (Ekkel & de Vries, 2017). In the context of disease
78 transmission, larger areas may offer more space per individual, lowering transmission risk.
79 However, smaller fragmented areas of green space are common in many residential areas

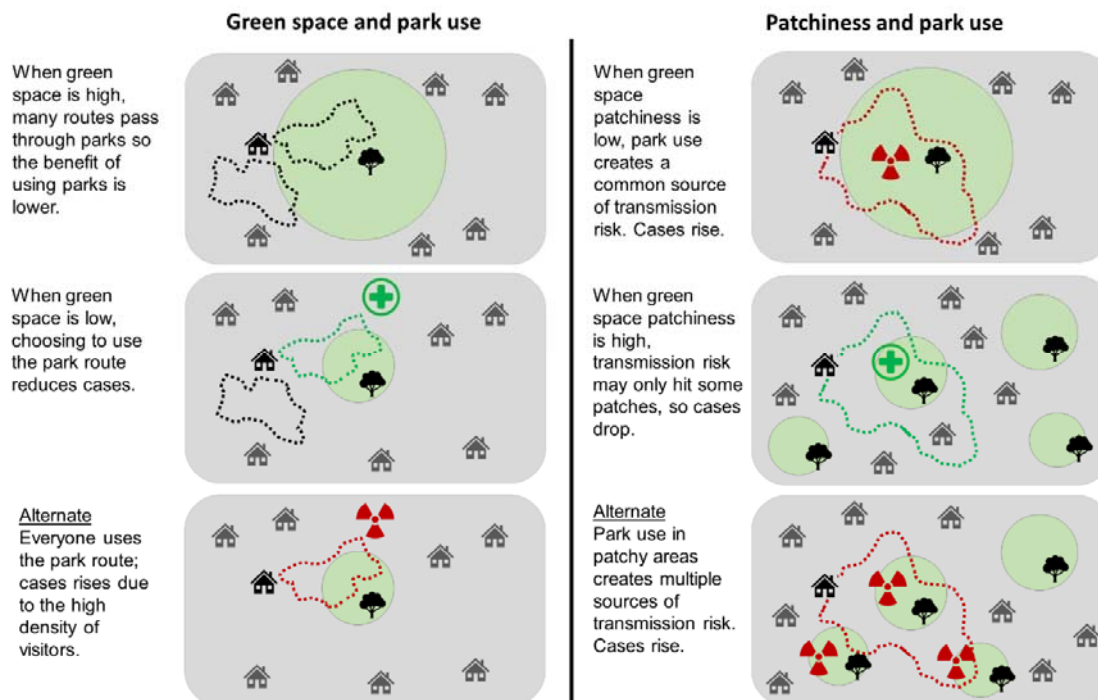
80 and are, therefore, more accessible to much of the population and may be used more
81 frequently. Further, if public use is distributed across fragmented green spaces, the wider
82 effects of a transmission incident could be reduced, as contacts would be isolated to the
83 members of a neighbourhood or community adjacent to a particular green space. This
84 process can be seen in animal diseases where habitat fragmentation reduces transmission
85 due to limiting interactions between groups in different patches (Mccallum & Dobson, 2002).
86 However, fragmentation also typically results from reductions in the total area of green space
87 (Fahrig, 2013), leading to less overall space per individual, possibly increasing transmission
88 rates.

89 Whilst the effects of green space on COVID-19 transmission are currently unclear, other
90 environmental and social factors are known to influence both the spread and severity of the
91 disease. For example, human mobility drives the spread of infectious diseases (Kraemer et
92 al., 2019) and studies have shown that reducing social interactions by restricting mobility can
93 lead to a decrease in transmission rates of COVID-19 (Chinazzi et al., 2020; Gatto et al.,
94 2020). Furthermore, as diseases are often spread along transport links and in offices
95 (Zhang, Huang, Su, Ma, & Li, 2018; Gatto et al., 2020), enforcing lockdown situations that
96 curtail movement, such as requiring people to work from home, can have a great effect on
97 reducing transmission rates. In addition to mobility, health and social factors have been
98 associated with increased severity of the disease such as age, underlying health conditions
99 and deprivation (Richardson et al., 2020; Williamson et al., 2020). Consequently, any
100 possible effects of green space must be considered after attempting to account for factors
101 that could increase recorded incidence.

102 Understanding the influence of green space on COVID-19 incidence could provide an
103 estimate of the value of green space for maintaining public health if subjected to a
104 resurgence of the COVID-19 pandemic, and, in the longer term, indicate the potential
105 benefits of local green space on future pandemics of comparative severity. Here, using time
106 series of local authority cases in England, UK, we explore how both green space use and

107 access influence COVID-19 incidence, which we define as the pre-peak rise, and post-peak
108 drop in cases. Our approach is to first construct a baseline health model to attempt to control
109 for factors likely to influence recorded COVID-19 incidence and then to explore how green
110 space influenced case rates above or below this baseline. We predict that green space and
111 the way it is structured, in itself, will have no effect on case rates. However, we expect that
112 an increase in park use (i.e. spending time in green space) will make the structure and
113 availability of green space important (Figure 1). Specifically, when green space is low, park
114 use will likely represent a safer form of movement (e.g. compared to shopping), unless the
115 green space becomes a congregation zone that inflates transmission risk. Furthermore, we
116 predict that case rates will be lower when green space is fragmented, as the disease will be
117 contained in more localised areas. For example, if the local authority has one large park the
118 presence of an infected individual puts more people at risk than an infected individual
119 attending one of many parks. Further, we predict, as others have found (Kraemer et al.,
120 2020), that increased mobility will increase incidence but that park use (measured as relative
121 use of parks) is the safest form of mobility (e.g. preferable over shopping).

122



123

124 **Figure 1.** Mechanisms by which green space and patchiness could interact with park use to influence
 125 COVID-19 transmission. The upper two rows describe the primary predictions, whilst the bottom row
 126 explains alternate predictions. All variables (e.g. population density) except green space and
 127 patchiness, respectively, are held at a constant in these predictions. Green circles with a tree icon
 128 indicate the presence of green space. Dotted lines indicate walking routes, which becomes park use
 129 when the line overlaps a green space. The green health symbol indicates that the landscape metric
 130 and park use is beneficial, whilst the red toxic symbol indicates a risk.

131 **Methods**

132 Data compilation

133 *COVID-19 case rates*

134 We compiled daily lab-confirmed cases (incidence) of COVID-19 in England from January 1st
 135 up to 29th June 2020 (available from <https://coronavirus.data.gov.uk/>). Cases were recorded
 136 at the local authority level for 343 administrative areas. These local authorities vary in size (3
 137 – 26,000km²), demographics, cultures, and in socio-economic circumstances. Incidence
 138 over this time consists of a period with zero cases at the beginning of the year, sporadic
 139 cases for a short time, followed by a period of rapid case increases, and then a subsequent

140 decline. To focus only on the pandemic, we first reduced the dataset to only include the
141 period where new COVID-19 cases were reported in six out of seven consecutive days in
142 each local authority. This, by visual inspection, captured the period of rapid incidence across
143 authorities. Authorities were then further excluded if this period consisted of less than 10
144 consecutive days of cases. We then modelled the rapid growth and decline of incidence over
145 time using two log-linear exponential growth models in each local authority (Ma, Dushoff,
146 Bolker, & Earn, 2014). The first model was fitted to the time-period up to the peak of
147 incidence in each local authority, and the second to the period from the peak of incidence.
148 The coefficients of these models provided a daily pre- and post-peak case rate. We
149 converted these coefficients into a daily percentage change in cases.

150 *Baseline transmission variables*

151 We compiled variables which describe the mechanisms known to influence case rates.
152 Firstly, we derived two variables which describe the structure of the local authority
153 population: population density – average of residential and working population density
154 (controls for green space in the green transmission difference model below); and population
155 clustering – Moran's I spatial autocorrelation of residential and working population density
156 (controls for patchiness in the green transmission difference model below). Secondly, we
157 compiled three variables which describe the health of the human population in each local-
158 authority prior to COVID-19: health – risk of premature death or a reduction in quality of life
159 due to poor mental or physical health (Ministry of Housing Communities & Local
160 Government, 2019); demography - the proportion of the population over 70 (Office for
161 National Statistics, 2019); economy – the percentage of unemployed-individuals in the non-
162 retired local authority population (Gov, 2018). A high baseline health, whereby few
163 individuals have pre-existing underlying health conditions, may decrease the chances of an
164 individual presenting with severe symptoms of COVID-19 and further passing the virus to
165 others (Clark et al., 2020). Accounting for this baseline health may also assist in controlling
166 for the presence of asymptomatic undetected infections in the case rates.

167 Finally, to obtain information on population movements during the COVID-19 pandemic, we
168 used Google Community Mobility Reports (Google, 2020). These reports chart movement
169 trends over time across six categories: retail and recreation, groceries and pharmacies,
170 transit stations, workplaces, residential, and parks. These trends describe how visitors to, or
171 time spent in, each of the six categories changed compared to a pre-pandemic 5-week
172 period (the median value from 3rd January to 6th February 2020). Gaps in the mobility data
173 do not indicate a lack of movement, instead, gaps occur when the data fall below the
174 required quality and privacy thresholds to ensure anonymity. Complete data were only
175 available for 44 of the 343 local authorities in England, but were available in six of England's
176 9 higher level regions (Greater London, South East, South West, West Midlands, North
177 West, North East, Yorkshire and the Humber, East Midlands, East of England). Missing local
178 authority mobility values were populated with their regional estimates, producing a complete
179 dataset of 98 local authorities. From this mobility dataset, we derived a variable which
180 described overall mobility change, which is the change in overall mobility since baseline,
181 averaged across each of the six categories. We calculated overall mobility separately for the
182 pre-and post-peak period in each local authority, with the same respective start and end date
183 as the COVID-19 case rate models.

184 *Green variables*

185 We compiled three variables which describe the structure of green spaces in each local
186 authority: patchiness – median frequency of parks within a 1km² radius around households
187 in the local authority (Office for National Statistics, 2020); gardens – percentage of
188 addresses with gardens (Office for National Statistics, 2020); green space – available green
189 space per person (m²) within the local authority, derived by dividing the green-cover area by
190 the local authority population size. Green-cover area was calculated from the UKCEH 2015
191 25metre land cover raster (Rowland et al., 2017). From this raster, we sampled ten random
192 20km² areas within each local authority and found the total land cover area of the following
193 landscape categories: broadleaved woodland, coniferous woodland, improved grassland,

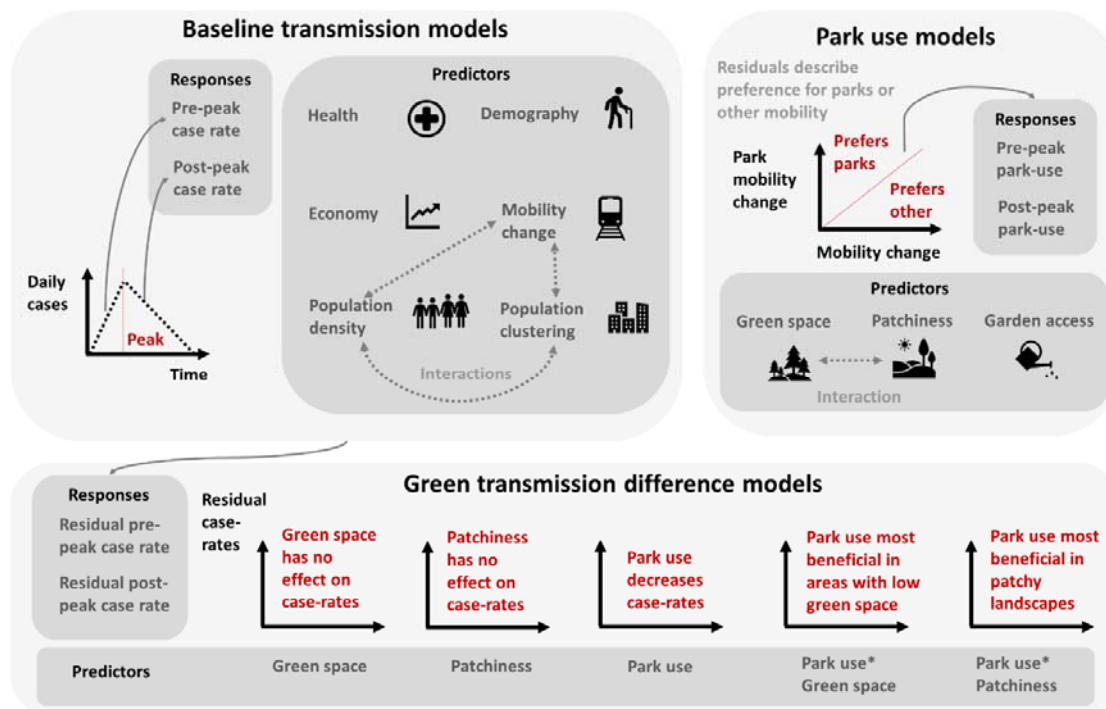
194 neutral grassland, calcareous grassland, acid grassland, fen, marsh and swamp, heather,
195 heather grassland, and bog. We then took the median of the ten 20km² areas. The 20km²
196 (2.5km² radius and around a centre point) area was designed to represent a household and
197 its surrounding green space (e.g. areas within walking distance). These areas were not
198 confined within each local authority meaning households bordering another authority could
199 have access to its green space.

200 Using the mobility dataset, we also produced a park use variable, which represents how
201 parks are used relative to overall mobility. This park use metric is derived by fitting a linear
202 model between park use and overall mobility, and extracting the residual park use, where
203 positive values represent a preference for using parks over other forms of mobility (in the
204 original percentage units). Parks include public gardens, castles, national forests, campsites,
205 observation points, and national parks, but exclude surrounding countryside in rural areas.
206 As a result, the Google (2020) definition of parks differs slightly to the landscape categories
207 used in our green space metric but are our best available representation of how green space
208 was used during the pandemic.

209 Modelling

210 We developed three core model types (Figure 2): baseline transmission – aimed at
211 controlling for the major mechanisms influencing case-rate changes; green transmission
212 difference – impact of landscape structure and park use on case rates; and park use –
213 impact of landscape structures on park usage, providing a mechanistic understanding of
214 the green transmission difference model e.g. if park use is important, what influences park
215 use. The baseline transmission and green transmission difference models are both focussed
216 on case rates, but we anticipated that any effects of green space on COVID-19 case rates
217 were likely to be much smaller than variables known to affect disease transmission (e.g.
218 population density). As a result, we structured our analyses to first account for the presence
219 of these more key variables in a baseline transmission model, and then in the green
220 transmission difference model, we explored how green areas (the focus of this study) can

221 alter the residuals of these case rates. Conventionally, it is advised to include all variables
 222 within one regression instead of analysing the residuals separately (Freckleton, 2002).
 223 However, variables were highly correlated (e.g. population density and green space per
 224 person are derived in similar ways), and resulted in multicollinearity issues.



225

226 **Figure 2.** Model structure for baseline transmission, green transmission difference, and park use
 227 models, depicting the process for developing the response variables, as well as the predictors used in
 228 each model. In the green transmission difference models, the red text represents the main model
 229 predictions.

230

231 We z-transformed all predictor variables in the models to determine effect sizes and reduce
 232 multicollinearity where interactions are present. Each of the models described below was
 233 repeated for the pre- and post-peak period, and all model assumptions passed e.g.
 234 multicollinearity, absence of spatial autocorrelation, homogeneity of variance, and normality
 235 of residuals. When summarising results, we report the mean \pm standard deviation, and when
 236 describing model outputs we report the following: coef = standardised slope coefficient, se =

237 standard error of slope coefficient, df = model degrees of freedom, t = model test-statistic,
238 and p = significance value. We report the model accuracy using two metrics described in
239 Mayer (2020): wR^2 – a weighted r-squared which describes the proportion of deviance
240 captured by the model; and $wmae$ – the weighted mean absolute error. Both of these metrics
241 describe the accuracy of the model predicted values, and were derived within the dataset,
242 rather than through an independent sub-sample. These metrics cannot indicate which aspect
243 of the model contributed most to the prediction accuracy (e.g. model accuracy will be
244 influenced by the fixed effects, random effects, the spatial correlation structure, and
245 weighting structure).

246 *Baseline transmission models*

247 To control for the baseline health and transmission mechanisms influencing COVID-19 case
248 rates, we developed linear mixed effect models, with case rate (pre- or post-peak) as the
249 response. We included the following predictor parameters: health, demography, economy,
250 population density, population clustering, and mobility change. We also included interactions
251 between population density and clustering, population density and mobility change, and
252 population clustering and mobility change. Lastly, in the post-peak case-rate models, we
253 wanted to control for instances where the case-rate drop was steeper because it had a
254 higher starting point. As a result, we included the maximum daily case count within the
255 model, as well as pre-peak mobility change which was found to be influential in the pre-peak
256 case rate model.

257 We allowed the model to vary by region with a random intercept to account for the non-
258 independence of some regions sharing mobility data. We also set an exponential spatial
259 correlation structure (using the local authorities' latitude and longitude centroid) to account
260 for the spatial autocorrelation of neighbouring local authorities sharing similar case rates.
261 Case rates were also weighted according to their variance (i.e. the variance of the slope in
262 the log-linear case rate regressions), such that areas where pre- and post-case rates were

263 less certain contributed proportionally less to the model fit. We extracted the residuals from
264 these models for the green transmission difference models.

265 It should be noted, even though variance inflation factors were suitably low for the baseline
266 transmission models, the precision of the coefficients may be reduced as many predictors
267 were correlated. Our justification for retaining these predictors in the baseline model, is that
268 the primary goal was identifying the impact of green space use after controlling for other
269 factors, and multicollinearity has no impact on predictive performance. However, to support
270 inference and explanation, we also report a simplified version of these baseline transmission
271 models in Table S1, where the health, demography and economy variables were removed.

272 *Green transmission difference models*

273 To assess how landscape structure and park use influenced residual case rates, we
274 developed linear mixed effect models, with pre- or post-peak residual case rates from the
275 baseline transmission models as the response, as well as the following predictor
276 parameters: park use (inverse hyperbolic sine transformed), green space (log10
277 transformed), patchiness, an interaction between park use and green space, and finally an
278 interaction between park use and patchiness. These models also included region as a
279 random intercept, but we did not control for the spatial structure of the data, which was
280 addressed in the earlier baseline transmission model. We did, however, still include the
281 variance weighting to specify that residuals from local authorities with a smaller variance in
282 case rates should contribute more to the model.

283 *Park use models*

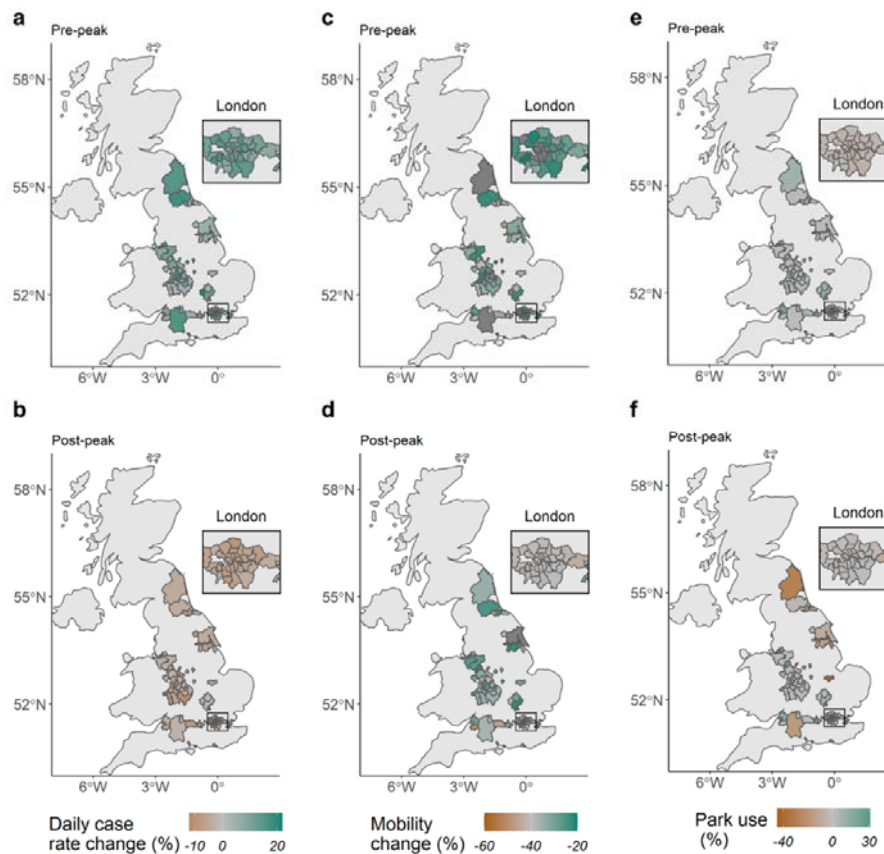
284 To understand how landscape structure influences park use and in turn, clarify the
285 mechanisms by which park use influences case rates, we developed linear mixed effect
286 models, with pre- or post-peak park use (inverse hyperbolic sine transformed) as the
287 response, and the following predictor parameters: gardens, green space (log10
288 transformed), patchiness, and an interaction between green space and patchiness. We also

289 included the region random intercept and a spatial correlation structure for the same reasons
290 as in the baseline transmission model.

291

292 **Results**

293 Across the 98 local authorities, the pre-peak cases rose 9.8% (± 4.6) per day and peaked
294 between 24th March and the 8th May. The peaks ranged in size from 9 to 132 daily cases,
295 and then post-peak, the daily case rate declined at -4.8% per day (± 2.2). Mobility reduced
296 substantially in the pre-peak period ($-28.3\% \pm 8.5$) and further again in the post-peak period
297 ($-37.0\% \pm 6.4$), but not equally across England, with mobility increasing in 20.4% of local
298 authorities between the pre- and post-peak period (Figure 3). In the pre-peak period, park
299 use ranged from -19.7% to 22.4%, but post-peak this range increased from -43.3% to
300 30.8%. Between this pre- and post-peak period, some authorities altered their park use, for
301 example, park use decreased by 38% in Peterborough, whilst park use increased by 22% in
302 Luton.



303

304 **Figure 3.** Change in a) pre-peak case rate, b) post-peak case rate, c) pre-peak mobility, d) post-peak
305 mobility, e) pre-peak park use, and f) post-peak park use, across 98 local authorities in England. X
306 and Y axes indicate longitude and latitude in decimal degrees.

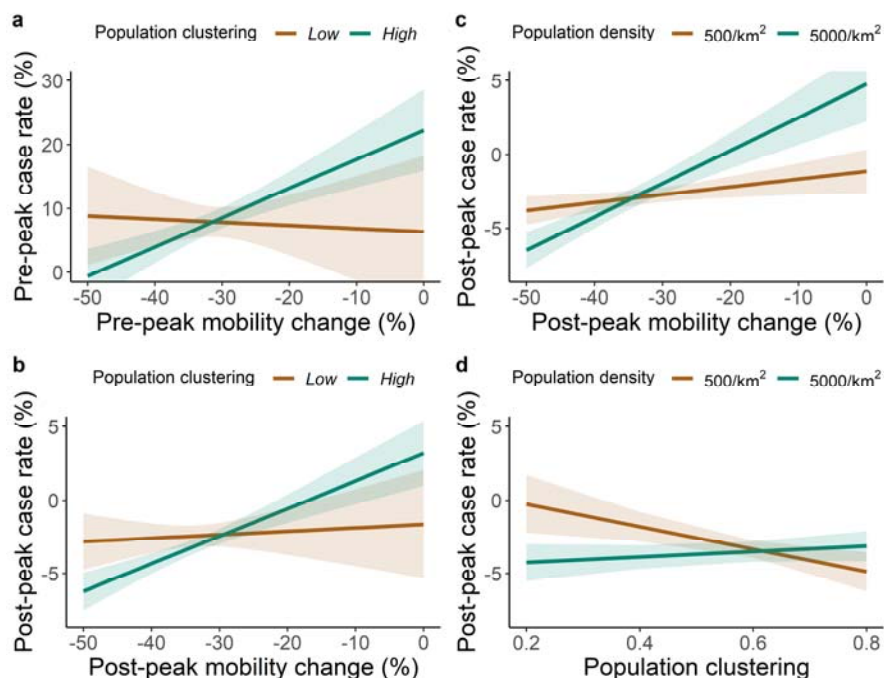
307

308 *Baseline transmission models*

309 Pre-peak case rates were lower in areas with a reduction in mobility (coef = 2.43, se = 0.51,
310 df = 80, t = 4.56, p < 0.001; Figure S1). Population density had no effect on pre-peak case
311 rates. Population clustering had a weak effect when interacting with mobility change, where
312 the effect of mobility change diminished when population clustering was low (coef = 1.00, se
313 = 0.56, df = 80, t = 1.76, p = 0.08; Figure 4a) - this interactive effect was lost in the simplified
314 baseline transmission model (Table S1). Given the variation in pre-peak case rates (Figure

315 3a), where daily case rises ranged from 2 – 21%, the model error was reasonably low ($wmae$
316 = 2.45% the $wR^2 = 0.4$).

317 The post-peak case rates were also lower in areas with a reduction in mobility (coef = 0.81,
318 se = 0.15, df = 78, t = 5.52, p < 0.001; Figure S2a), and we observed a similar interaction
319 between population clustering and mobility change (coef = 0.24, se = 0.12, df = 78, t = 2.0, p
320 = 0.048; Figure 4b), as in the pre-peak model. A similar result was found for the interaction
321 between mobility change and population density, where the effect of mobility increasing
322 post-peak case rates diminished at low population densities (coef = 0.59, se = 0.14, df = 78,
323 t = 4.18, p < 0.001; Figure 4c). Population density also interacted with population clustering,
324 with case-rates declining as clustering increases, (coef = -0.29, se = 0.14, df = 78, t = -2.11,
325 p = 0.04), but only when population density was low (coef = 0.42, se = 0.15, df = 78, t = 2.81,
326 p = 0.006; Figure 4d). Post-peak case-rates were also influenced by pre-peak activity, as
327 rates were lower in areas with a reduction in pre-peak mobility (coef = 0.34, se = 0.14, df =
328 78, t = 2.40, p = 0.019; Figure S2b), and areas with a larger peak in cases had a faster
329 decline in post-peak case-rate (coef = -0.53, se = 0.10, df = 78, t = -5.16, p < 0.001; Figure
330 S2c). The model error in post-peak case rates was lower than in the pre-peak case rates,
331 with a moderately high post-peak prediction accuracy ($wmae = 0.69%$ the $wR^2 = 0.61$).



332

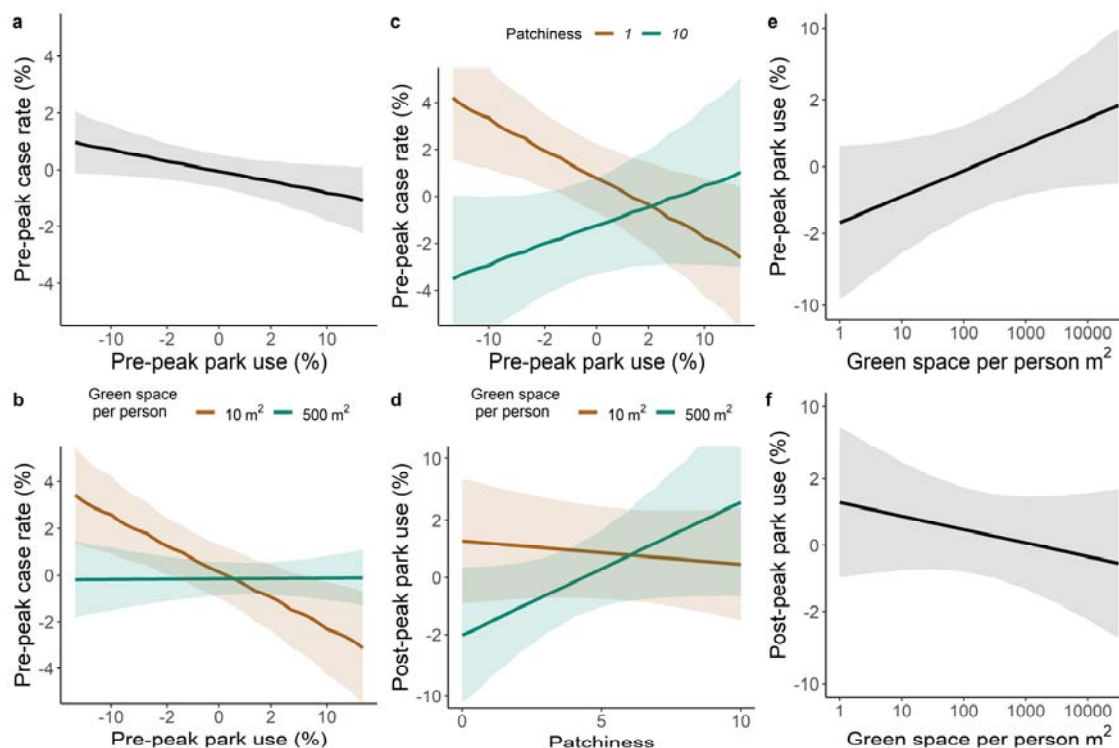
333 **Figure 4.** Marginal effects of important interaction parameters in the baseline transmission models.
 334 Marginal effects are held at zero for all other parameters as variables were z-transformed. In panels a
 335 and b, population clustering was set at 0.35 (Low) and 0.7 (High), where 0 indicates a random
 336 distribution of clustering, and 1 indicates a complete separation in clustering. Error bars represent the
 337 95 confidence intervals.

338

339 *Green transmission difference models*

340 Park use decreased residual pre-peak case rates (coef = -0.57, se = 0.29, df = 84, t = 1.99,
 341 p = 0.049; Figure 5a), but there was an interaction between park use and green space, with
 342 the effect of park use diminishing when green space was high (coef = -0.91, se = 0.35, df =
 343 84, t = 2.59, p = 0.01; Figure 5b). There was also an interactive effect between park use and
 344 patchiness, as park use decreased the residual pre-peak case rate when patchiness was
 345 low, but increased the case rate when patchiness was high (coef = -0.66, se = 0.32, df = 84,
 346 t = 2.03, p = 0.04;; Figure 5c). Green space and patchiness had no general effect on residual
 347 pre- or post-peak case rates, whilst park use and the interactive effects also had no effect on
 348 residual post-peak case rates (Table S2). Nevertheless, incorporating these park use and
 349 landscape structure effects led to a modest decrease in case rate prediction error; $wmae$

350 decreased from 2.45% to 2.34% in the pre-peak period, and from 0.69% to 0.655% in the
 351 post-peak period. This equated to more dramatic improvements in the wR^2 , where accuracy
 352 jumped from 0.42 to 0.5 in the pre-peak period, and from 0.61 to 0.68 in the post-peak
 353 period, which represent a 19% and 11% accuracy increase, respectively.



354

355 **Figure 5.** Marginal effects of a selection of parameters in the green transmission difference (a-c) and
 356 park use (d-f) models. All other parameters are held at their mean (zero) for the marginal effects. In
 357 panels d-f, the y-axes are inverse hyperbolic sine scaled, as are the x-axes in panels a-c. In panels e
 358 & f, the x-axis is log10 scaled. Error bars represent the 95 confidence intervals.

359

360 *Park use models*

361 Access to gardens, patchiness, and the interaction between green space and patchiness
 362 had no effect on pre-peak park use, but pre-peak park use was marginally greater in
 363 authorities with high green space (coef = 0.47, se = 0.26, df = 85, t = 1.77, p = 0.08; Figure
 364 5e). However, in the post-peak period, green space had no effect on park use (Figure 5f),
 365 except in the interactive effect with patchiness, where post-peak park use increased with

366 patchiness, but only when green space was high (coef = 0.36, se = 0.14, df = 85, t = 2.51, p
367 = 0.01; Figure 5d). Patchiness and gardens did not have an overall effect on post-peak park
368 use (Table S3).

369

370 **Discussion**

371 In this study, we attempted to quantify the effects of local green space on COVID-19 case
372 rates after accounting for mechanisms known to influence pandemics in our baseline
373 transmission model. We found that high overall mobility increased both pre- and post-peak
374 case rates, especially when population clustering and density were high (this mobility-density
375 interaction effect was only important in the post-peak period). After accounting for these
376 variables, we found that higher park use, compared to other amenity areas, led to a
377 reduction in pre-peak case rates, especially in areas with low and contiguous green space.
378 These results highlight that utilising green spaces rather than carrying out other activities
379 (e.g. visiting shops and workplaces) can reduce the transmission rate of COVID-19,
380 especially during an exponential phase of transmission.

381 From our baseline transmission model results, population density (Figure 4c) and clustering
382 (Figure 4a, b) were only important when considered in an interaction with mobility, and
383 population density was only important in the post-peak period. This is surprising, but is
384 consistent with person-person contact as the major mechanism of transmission i.e. even a
385 very dense and clustered population will have slow transmission rates if there are few
386 interactions between people. This appears to demonstrate the general effectiveness of
387 lockdown measures in reducing case rates, as others have demonstrated previously (Davies
388 et al., 2020; Lau et al., 2020). However, we found mobility had less impact in low density,
389 low clustered areas, which again may be expected, as people are more likely to be able to
390 maintain distance and the potential number of interactions is reduced. However, even in
391 these conditions, mobility still slightly increased post-peak case rates and so lockdown still

392 appeared to have some effect on reducing case rates even in low density and low clustered
393 areas.

394 Previous research has shown the importance of health, deprivation, demography and
395 economic prosperity on COVID-19 case rates (Abedi et al., 2020; Atkins et al., 2020; Dowd
396 et al., 2020). However, in our baseline health transmission models, these variables did not
397 explain differences in COVID-19 case rates found in our dataset. This is likely due to the
398 variables being somewhat correlated with population density, with consequent reductions in
399 the information available in the data to assess their effects (as described in *Methods*). For
400 example, an older population is correlated with decreased population density and though
401 older people seem to be more vulnerable to COVID-19 (Jordan et al., 2020), they are more
402 likely to reside in safer (low population density) areas; consequently separating these effects
403 may simply not be possible given the data used. Another consideration between findings for
404 demographic/social groups at a national scale and local case rates, is that the assemblages
405 being compared contain varying proportions of the groups in question i.e. we ask ‘does an
406 older population lead to higher local case rates?’, not ‘are there differences in the per-capita
407 rate of cases between different demographic, economic, and health groups?’. We suggest
408 that our analysis is unsuited to resolving questions of the second type and that the baseline
409 transmission model is best viewed simply as controlling for possible factors in an attempt to
410 isolate the effects of green space.

411 Once we had accounted for known drivers of case-rates, we investigated how landscape
412 structure and park use (i.e. mobility in green spaces) affected residual case rates using the
413 green transmission model. Here we found that using parks, relative to other other types of
414 mobility, led to a reduction in pre-peak case rates (Figure 5a). However, reducing overall
415 mobility (i.e. mobility to all amenity areas) led to a far more substantial decline in both pre-
416 and post-peak case rates, especially in dense and clustered populations as found in the
417 baseline transmission model. For example, continuing mobility at pre-pandemic levels led to
418 15.4% daily increase in cases when park use was at its highest, compared to a 17.4% daily

419 increase when park use was at its lowest - a 2% case rate reduction. In contrast, halving
420 overall mobility reduced case rates by 13.6%. This suggests that the use of parks may have
421 modestly helped in reducing transmission rates in some areas during the increasing phase
422 of the pandemic, but reducing overall mobility is substantially more beneficial than
423 maintaining mobility at pre-pandemic levels and spending that mobility in parks.

424 Whilst park use, overall, had a relatively small effect, we did note stronger effects of park use
425 when the context of the local area was considered as using parks was beneficial in
426 authorities with low and contiguous green space (Figure 5b and 5c). That park use has a
427 minor beneficial effect overall seems to support our hypothesis that recreation in green
428 space and parks may be safer than in other amenity areas. This is probably because it is
429 easier to maintain distance and green spaces have fewer surfaces which could result in
430 transmission if contaminated. However, the limiting impact of this when green space is high
431 and accessible seems to suggest diminishing returns in how park use can impact COVID-19
432 transmission. This is perhaps not surprising if the main value of parks in this context is as an
433 alternative to other relatively more hazardous amenity or shopping areas. Consequently, if
434 there are other safe options outside of public parks then parks will likely have little impact.
435 However, our findings do suggest that the use of public parks in a highly urbanised area may
436 be advantageous, though as noted above the strongest effect was from the reduction of all
437 forms of mobility. Therefore, cautiously, and given that it corresponds with common sense,
438 we suggest that reducing mobility is a successful strategy for reducing case-rates but given
439 a need for some non-essential time outside of a home, using green spaces such as local
440 parks may be the next best thing, particularly in highly urbanised areas.

441 As we demonstrated the importance of park use over other types of mobility in reducing the
442 exponential rise in cases, we then aimed to understand what green space parameters (area
443 and patchiness of green space and access to gardens) influenced pre- and post-peak park
444 use. We found that, overall, accessible green space marginally predicted an increase in pre-
445 peak park use (Figure 5e), but not post-peak (Figure 5f). We also noted an interaction

446 between use of parks and the amount and patchiness of the green space (Figure 5d – but
447 should be f). We found that if an area had high green space, but it was not patchy, then it
448 was used less, but that in low green space areas patchiness had little effect. A possible
449 explanation for this is that in less green areas overall, large areas of concentrated green
450 space act as a stronger attractor for a certain kind of experience for members of the public.
451 For example, a large park in a heavily urbanised area provides a walking experience that
452 may not be readily substituted by walking through other local areas, whereas a walk in an
453 overall greener area may be more comparable to that in a park. This is supported by
454 evidence that suggests greater psychological benefits when walking in green parks as
455 opposed to urban streets (Johansson, Hartig, & Staats, 2011), as well as evidence
456 highlighting the combined health benefits of physical activity within green spaces (Pretty et
457 al., 2007). Consequently, as would be predicted from basic considerations of scarcity, local
458 green space provision seems to have more consistent value in areas where there is less
459 green space independent of its structure, however, overall, accessibility seems to be a
460 driving factor of usage.

461 A major limitation of the work is the difficulty in comparing across local authorities that vary
462 simultaneously in many different variables likely important to case rates. As mentioned
463 previously, this makes inference about the importance of their individual effects very difficult,
464 or simply not possible. Therefore, we reiterate that our results do not provide evidence that
465 the demographic and social groups included are not more or less affected by COVID-19, and
466 we suggest that any findings from studies directly addressing questions about these groups
467 are given priority. Another challenge is that pandemics are rare events, consequently, our
468 analysis covers only a snapshot of time for each local authority. During this period, many
469 different factors not included in the analysis (e.g. chance super spreading events) may have
470 explained much of the variation between local authorities. Despite this, the model fits are
471 reasonably high, especially after incorporating the green transmission models. However, the
472 modest beneficial effect of park use on COVID-19 transmission could be useful in the

473 general attempt to develop guidance for which spaces to use during an exponential phase of
474 transmission.

475 Understanding the risks of different amenity areas could be important for longer-term
476 management of COVID-19 and in particular, the landscape-dependency of this advice could
477 be important for developing 'local-lockdown' guidance. Our results show that spending time
478 in parks, relative to other amenity areas can reduce COVID-19 case rates especially in
479 urbanised, high-density areas. Although, further research is needed, these findings suggest
480 that the use of parks for recreational activity in these contexts could be advisable,
481 demonstrating a possible additional utility of these green spaces in addition to the known
482 benefits to health and wellbeing (de Vries, Verheij, Groenewegen, & Spreeuwenberg, 2003;
483 Mitchell & Popham, 2007; Nutsford et al., 2013) in normal non-pandemic conditions.

484

485 **Acknowledgments**

486 Thanks to the NERC Covid-19 hackathon for instigating this work. This work was partly
487 funded by the following NERC (Natural Environment Research Council) Centre for Doctoral
488 Training studentships: J71566E, P012345, and L002566.

489 **Data accessibility**

490 Code and data to repeat analysis are presented in
491 https://github.com/GitTFJ/COVID19_parks_landscape

492 **Author contributions**

493 All authors contributed to project design. Analysis was lead by TFJ and LCE, but all authors
494 contributed. TFJ and LCE co-wrote the first draft and co-authors contributed to revisions.

495 **References**

496 Abedi, V., Olulana, O., Avula, V., Chaudhary, D., Khan, A., Shahjouei, S., ... Zand, R.

- 497 (2020). Racial, Economic and Health Inequality and COVID-19 Infection in the United
498 States. *MedRxiv*: *The Preprint Server for Health Sciences*.
499 doi:10.1101/2020.04.26.20079756
- 500 Atkins, J. L., Masoli, J. A. H., Delgado, J., Pilling, L. C., Kuo, C.-L., Kuchel, G. A., & Melzer,
501 D. (2020). Preexisting Comorbidities Predicting COVID-19 and Mortality in the UK
502 Biobank Community Cohort. *The Journals of Gerontology: Series A*.
503 doi:10.1093/gerona/glaa183
- 504 Bahl, P., Doolan, C., de Silva, C., Chughtai, A. A., Bourouiba, L., & MacIntyre, C. R. (2020).
505 Airborne or Droplet Precautions for Health Workers Treating Coronavirus Disease
506 2019? *The Journal of Infectious Diseases*. doi:10.1093/infdis/jiaa189
- 507 Beyrer, K. M. M., Kaltenbach, A., Szabo, A., Bogar, S., Javier Nieto, F., & Malecki, K. M.
508 (2014). Exposure to neighborhood green space and mental health: Evidence from the
509 survey of the health of wisconsin. *International Journal of Environmental Research and
510 Public Health*. doi:10.3390/ijerph110303453
- 511 Chinazzi, M., Davis, J. T., Ajelli, M., Gioannini, C., Litvinova, M., Merler, S., ... Vespignani,
512 A. (2020). The effect of travel restrictions on the spread of the 2019 novel coronavirus
513 (COVID-19) outbreak. *Science*. doi:10.1126/science.aba9757
- 514 Clark, A., Jit, M., Warren-Gash, C., Guthrie, B., Wang, H. H. X., Mercer, S. W., ... Jarvis, C.
515 I. (2020). Global, regional, and national estimates of the population at increased risk of
516 severe COVID-19 due to underlying health conditions in 2020: a modelling study. *The
517 Lancet Global Health*. doi:10.1016/S2214-109X(20)30264-3
- 518 Cohen-Cline, H., Turkheimer, E., & Duncan, G. E. (2015). Access to green space, physical
519 activity and mental health: A twin study. *Journal of Epidemiology and Community
520 Health*. doi:10.1136/jech-2014-204667
- 521 Davies, N. G., Kucharski, A. J., Eggo, R. M., Gimma, A., Edmunds, W. J., Jombart, T., ...

- 522 Liu, Y. (2020). Effects of non-pharmaceutical interventions on COVID-19 cases, deaths,
523 and demand for hospital services in the UK: a modelling study. *The Lancet Public*
524 *Health*. doi:10.1016/S2468-2667(20)30133-X
- 525 de Vries, S., Verheij, R. A., Groenewegen, P. P., & Spreeuwenberg, P. (2003). Natural
526 environments - Healthy environments? An exploratory analysis of the relationship
527 between greenspace and health. *Environment and Planning A*. doi:10.1068/a35111
- 528 Dowd, J. B., Andriano, L., Brazel, D. M., Rotondi, V., Block, P., Ding, X., ... Mills, M. C.
529 (2020). Demographic science aids in understanding the spread and fatality rates of
530 COVID-19. *Proceedings of the National Academy of Sciences of the United States of*
531 *America*. doi:10.1073/pnas.2004911117
- 532 Ekkel, E. D., & de Vries, S. (2017). Nearby green space and human health: Evaluating
533 accessibility metrics. *Landscape and Urban Planning*.
534 doi:10.1016/j.landurbplan.2016.06.008
- 535 Fahrig, L. (2013). Rethinking patch size and isolation effects: The habitat amount
536 hypothesis. *Journal of Biogeography*. doi:10.1111/jbi.12130
- 537 Freckleton, R. P. (2002). On the misuse of residuals in ecology: Regression of residuals vs.
538 multiple regression. *Journal of Animal Ecology*. doi:10.1046/j.1365-2656.2002.00618.x
- 539 Gatto, M., Bertuzzo, E., Mari, L., Miccoli, S., Carraro, L., Casagrandi, R., & Rinaldo, A.
540 (2020). Spread and dynamics of the COVID-19 epidemic in Italy: Effects of emergency
541 containment measures. *Proceedings of the National Academy of Sciences of the United*
542 *States of America*. doi:10.1073/pnas.2004978117
- 543 Google. (2020). Google COVID-19 Community Mobility Reports.
544 <https://www.google.com/covid19/mobility/> Accessed: <18 May 2020>.
- 545 Gov. (2018). Unemployment by ethnicity: Unemployment by local authority. Retrieved from
546 <https://data.gov.uk/dataset/fe6c83aa-62aa-4a8c-94cc-225f47287225/unemployment->

- 547 by-ethnicity/datafile/eba34752-0512-4cbe-9941-c9e5745fa937/preview
- 548 Gov. The Health Protection (Coronavirus, Restrictions) (England) (Amendment) (No. 4)
- 549 Regulations 2020, legislation.gov.uk § (2020).
- 550 Hamer, M., Kivimäki, M., Gale, C. R., & Batty, G. D. (2020). Lifestyle risk factors,
- 551 inflammatory mechanisms, and COVID-19 hospitalization: A community-based cohort
- 552 study of 387,109 adults in UK. *Brain, Behavior, and Immunity*.
- 553 doi:10.1016/j.bbi.2020.05.059
- 554 Johansson, M., Hartig, T., & Staats, H. (2011). Psychological benefits of walking: Moderation
- 555 by company and outdoor environment. *Applied Psychology: Health and Well-Being*.
- 556 doi:10.1111/j.1758-0854.2011.01051.x
- 557 Jordan, R. E., Adab, P., & Cheng, K. K. (2020). Covid-19: Risk factors for severe disease
- 558 and death. *The BMJ*. doi:10.1136/bmj.m1198
- 559 Kraemer, M. U. G., Golding, N., Bisanzio, D., Bhatt, S., Pigott, D. M., Ray, S. E., ... Reiner,
- 560 R. C. (2019). Utilizing general human movement models to predict the spread of
- 561 emerging infectious diseases in resource poor settings. *Scientific Reports*.
- 562 doi:10.1038/s41598-019-41192-3
- 563 Kraemer, M. U. G., Yang, C. H., Gutierrez, B., Wu, C. H., Klein, B., Pigott, D. M., ...
- 564 Scarpino, S. V. (2020). The effect of human mobility and control measures on the
- 565 COVID-19 epidemic in China. *Science*. doi:10.1126/science.abb4218
- 566 Lau, H., Khosrawipour, V., Kocbach, P., Mikolajczyk, A., Schubert, J., Bania, J., &
- 567 Khosrawipour, T. (2020). The positive impact of lockdown in Wuhan on containing the
- 568 COVID-19 outbreak in China. *Journal of Travel Medicine*. doi:10.1093/jtm/taaa037
- 569 Ma, J., Dushoff, J., Bolker, B. M., & Earn, D. J. D. (2014). Estimating Initial Epidemic Growth
- 570 Rates. *Bulletin of Mathematical Biology*. doi:10.1007/s11538-013-9918-2
- 571 Maas, J., Verheij, R. A., Groenewegen, P. P., De Vries, S., & Spreeuwenberg, P. (2006).

- 572 Green space, urbanity, and health: How strong is the relation? *Journal of Epidemiology*
573 *and Community Health*. doi:10.1136/jech.2005.043125
- 574 Mahase, E. (2020). China coronavirus: WHO declares international emergency as death toll
575 exceeds 200. *BMJ (Clinical Research Ed.)*. doi:10.1136/bmj.m408
- 576 Mayer, M. (2020). MetricsWeighted.
- 577 Mccallum, H., & Dobson, A. (2002). Disease , habitat fragmentation and conservation.
578 *Proceedings Biological Sciences*.
- 579 Ministry of Housing Communities & Local Government. (2019). English indices of deprivation
580 2019. Retrieved from [https://www.gov.uk/government/statistics/english-indices-of-](https://www.gov.uk/government/statistics/english-indices-of-deprivation-2019)
581 [deprivation-2019](https://www.gov.uk/government/statistics/english-indices-of-deprivation-2019)
- 582 Mitchell, R., & Popham, F. (2007). Greenspace, urbanity and health: Relationships in
583 England. *Journal of Epidemiology and Community Health*.
584 doi:10.1136/jech.2006.053553
- 585 Nutsford, D., Pearson, A. L., & Kingham, S. (2013). An ecological study investigating the
586 association between access to urban green space and mental health. *Public Health*.
587 doi:10.1016/j.puhe.2013.08.016
- 588 Office for National Statistics. (2019). Local authority ageing statistics, based on annual mid-
589 year population estimates. Retrieved from [https://www.ons.gov.uk/datasets/ageing-](https://www.ons.gov.uk/datasets/ageing-population-estimates/editions/time-series/versions/3)
590 [population-estimates/editions/time-series/versions/3](https://www.ons.gov.uk/datasets/ageing-population-estimates/editions/time-series/versions/3)
- 591 Office for National Statistics. (2020). Access to gardens and public green space in Great
592 Britain. Retrieved from
593 [https://www.ons.gov.uk/economy/environmentalaccounts/datasets/accesstogardensand](https://www.ons.gov.uk/economy/environmentalaccounts/datasets/accesstogardensandpublicgreenspaceingreatbritain)
594 [publicgreenspaceingreatbritain](https://www.ons.gov.uk/economy/environmentalaccounts/datasets/accesstogardensandpublicgreenspaceingreatbritain)
- 595 Pretty, J., Peacock, J., Hine, R., Sellens, M., South, N., & Griffin, M. (2007). Green exercise
596 in the UK countryside: Effects on health and psychological well-being, and implications

- 597 for policy and planning. *Journal of Environmental Planning and Management*.
598 doi:10.1080/09640560601156466
- 599 Richardson, S., Hirsch, J. S., Narasimhan, M., Crawford, J. M., McGinn, T., Davidson, K. W.,
600 ... Zanos, T. P. (2020). Presenting Characteristics, Comorbidities, and Outcomes
601 among 5700 Patients Hospitalized with COVID-19 in the New York City Area. *JAMA -*
602 *Journal of the American Medical Association*. doi:10.1001/jama.2020.6775
- 603 Rowland, C. S., Morton, R. D., Carrasco, L., McShane, G., O'Neil, A. W., & Wood, C. .
604 (2017). Land Cover Map 2015. *NERC Environmental Information Data Centre*.
- 605 Seo, S., Choi, S., Kim, K., Kim, S. M., & Park, S. M. (2019). Association between urban
606 green space and the risk of cardiovascular disease: A longitudinal study in seven
607 Korean metropolitan areas. *Environment International*. doi:10.1016/j.envint.2019.01.038
- 608 Taylor, L., & Hochuli, D. F. (2017). Defining greenspace: Multiple uses across multiple
609 disciplines. *Landscape and Urban Planning*. doi:10.1016/j.landurbplan.2016.09.024
- 610 van den Berg, M., Wendel-Vos, W., van Poppel, M., Kemper, H., van Mechelen, W., & Maas,
611 J. (2015). Health benefits of green spaces in the living environment: A systematic
612 review of epidemiological studies. *Urban Forestry and Urban Greening*.
613 doi:10.1016/j.ufug.2015.07.008
- 614 Williamson, E. J., Walker, A. J., Bhaskaran, K., Bacon, S., Bates, C., Morton, C. E., ...
615 Goldacre, B. (2020). Factors associated with COVID-19-related death using
616 OpenSAFELY. *Nature*. doi:10.1038/s41586-020-2521-4
- 617 Zhang, N., Huang, H., Su, B., Ma, X., & Li, Y. (2018). A human behavior integrated
618 hierarchical model of airborne disease transmission in a large city. *Building and*
619 *Environment*. doi:10.1016/j.buildenv.2017.11.011
- 620
- 621

