

1 **Attributes and predictors of Long-COVID: analysis of COVID cases and their symptoms**  
2 **collected by the Covid Symptoms Study App**

3  
4 Carole H. Sudre<sup>1,2,3</sup>, Benjamin Murray<sup>3</sup>, Thomas Varsavsky<sup>3</sup>, Mark S. Graham<sup>3</sup>, Rose S. Penfold<sup>4</sup>,  
5 Ruth C. Bowyer<sup>5</sup>, Joan Capdevila Pujol<sup>5</sup>, Kerstin Klaser<sup>3</sup>, Michela Antonelli<sup>3</sup>, Liane S. Canas<sup>3</sup>,  
6 Erika Molteni<sup>3</sup>, Marc Modat<sup>3</sup>, M. Jorge Cardoso<sup>3</sup>, Anna May<sup>5</sup>, Sajaysurya Ganesh<sup>5</sup>, Richard  
7 Davies<sup>5</sup>, Long H Nguyen<sup>6</sup>, David A. Drew<sup>6</sup>, Christina M. Astley<sup>7</sup>, Amit D. Joshi<sup>6</sup>, Jordi Merino<sup>8,9,10</sup>,  
8 Neli Tsereteli<sup>11</sup>, Tove Fall<sup>12</sup>, Maria F. Gomez<sup>11</sup>, Emma L. Duncan<sup>4</sup>, Cristina Menni<sup>4</sup>, Frances M.K.  
9 Williams<sup>4</sup>, Paul W. Franks<sup>4,11</sup>, Andrew T. Chan<sup>6</sup>, Jonathan Wolf<sup>5</sup>, Sebastien Ourselin<sup>3</sup>, Tim  
10 Spector<sup>4</sup>, Claire J. Steves<sup>4</sup>\*

11  
12 1 MRC Unit for Lifelong Health and Ageing, Department of Population Health Sciences,  
13 University College London, WC1E 7HB London

14 2 Centre for Medical Image Computing, Department of Computer Science, University College  
15 London

16 3 School of Biomedical Engineering & Imaging Sciences, King's College London, SE1 7EU, London  
17 UK

18 4 Department of Twin Research and Genetic Epidemiology, King's College London,  
19 Westminster Bridge Road, SE17EH London, UK

20 5 Zoe Global Limited, 164 Westminster Bridge Road, London SE1 7RW, UK

21 6 Clinical and Translational Epidemiology Unit, Massachusetts General Hospital, MA, USA

22 7 Division of Endocrinology & Computational Epidemiology, Boston Children's Hospital, MA,  
23 USA

24 8 Diabetes Unit and Center for Genomic Medicine, Massachusetts General Hospital, Boston,  
25 MA, USA.

26 9 Program in Medical and Population Genetics, Broad Institute, Cambridge, MA, USA.

27 10 Department of Medicine, Harvard Medical School, Boston, MA, USA.

28 11 Lund University Diabetes Centre, Department of Clinical Sciences, Malmö, Sweden

29 12 Molecular epidemiology, Department of Medical Sciences, Uppsala University, SE-751 85  
30 Uppsala Sweden

31  
32 Corresponding author: Claire J. Steves – [Claire.j.steves@kcl.ac.uk](mailto:Claire.j.steves@kcl.ac.uk)

33  
34  
35 **Reports of "Long-COVID", are rising but little is known about prevalence, risk factors, or**

36 **whether it is possible to predict a protracted course early in the disease. We analysed data**

37 **from 4182 incident cases of COVID-19 who logged their symptoms prospectively in the COVID**

38 **Symptom Study app. 558 (13.3%) had symptoms lasting >28 days, 189 (4.5%) for >8 weeks**

39 **and 95 (2.3%) for >12 weeks. Long-COVID was characterised by symptoms of fatigue,**

40 **headache, dyspnoea and anosmia and was more likely with increasing age, BMI and female**  
41 **sex. Experiencing more than five symptoms during the first week of illness was associated**  
42 **with Long-COVID, OR=3.53 [2.76;4.50]. A simple model to distinguish between short and long-**  
43 **COVID at 7 days, which gained a ROC-AUC of 76%, was replicated in an independent sample**  
44 **of 2472 antibody positive individuals. This model could be used to identify individuals for**  
45 **clinical trials to reduce long-term symptoms and target education and rehabilitation services.**

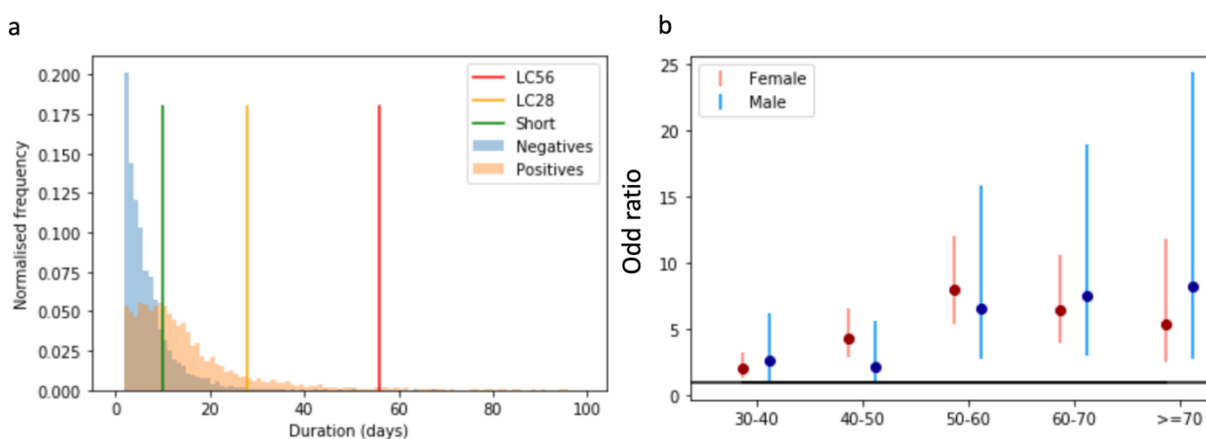
46  
47 COVID-19 can manifest a wide severity spectrum from asymptomatic to fatal forms <sup>1</sup>. A further  
48 source of heterogeneity is the duration of symptoms after the acute stage which could have  
49 considerable impact due to the huge scale of the pandemic. Hospitalised patients are well  
50 recognised to have lasting dyspnoea and fatigue in particular <sup>2</sup>, yet such patients constitute the  
51 ‘tip of the iceberg’ of symptomatic SARS CoV2 disease <sup>3</sup>. Few studies capture symptoms  
52 prospectively in the general population to ascertain with accuracy the duration of illness and  
53 the prevalence of long-lasting symptoms.

54  
55 Here we report a prospective observational cohort study of COVID-19 symptoms in a subset of  
56 4182 users of the COVID Symptom Study app meeting inclusion criteria (see online methods) <sup>4,5</sup>.  
57 Briefly, the subset comprised individuals who had tested positive for SARS-CoV2 by PCR swab  
58 testing who logged as “feeling physically normal” before the start of illness (up to 14 days  
59 before testing) so that we could determine onset. We compare cases of long (reporting  
60 symptoms lasting more than 28 days, LC28) and short duration (reporting symptoms lasting less  
61 than 10 days, short-COVID). Our previous findings that clusters of symptoms predicted the

62 need for acute care <sup>6</sup> led us to hypothesize that persistent symptomatology in COVID-19 (Long-  
63 COVID) is associated with a particular symptom pattern early in the disease which could be  
64 used to predict who might be affected. In particular, dyspnoea has been shown to be a  
65 significant predictor of long-term symptoms in an unselected population<sup>7</sup>.

66  
67 Figure 1 shows the duration of symptoms reported in COVID+ cases (orange) over-laid on age,  
68 sex and BMI matched negative testing symptomatic controls (blue), depicting lines for the  
69 definitions of short-COVID, LC28 and LC56 (symptoms for more than 56 days) used in this study.  
70 The duration of COVID-19 symptoms followed an approximately log-normal distribution (sigma  
71 = 0.97, location =0.78, scale = 10.07), with an overall median symptom duration of 11 days  
72 (IQR[6;19]).

73  
74 Figure 1. a) Distribution of duration of symptoms in COVID-19 – The coloured bars indicate the limits to define  
75 short, LC28 and LC56. b) OR and 95% CI of LC28 with each successive decile compared to 20-30-year-olds  
76



77  
78  
79  
80 Of the 4182 COVID-19 swab positive users, 558 (13.3%) met the LC28 definition with a median  
81 duration of 41 days (IQR[33,63] of whom 189 (4.5%) met LC-56, and 95 (2.3%) LC94. In contrast

82 1591 (38.0%) had short disease duration (median 6, IQR[4-8]). The proportion with LC28 were  
 83 comparable in all three separate countries (GB 13.3%, USA 16.1%, Sweden 12.1% p=0.35) and  
 84 for LC56 (GB 4.7%, USA 5.5%, Sweden 2.5% p=0.07).  
 85  
 86 Table 1 summarises the descriptive characteristics of the study population overall and  
 87 stratifying by symptom/disease duration. Age was significantly associated with Long-COVID  
 88 (LC28) rising from 9.9% in 18-49 year olds to 21.9% in those aged  $\geq 70$  ( $p < 0.0005$ ), with a clear  
 89 escalation in OR by age decile (Figure 1b), although females aged 50-60 had the highest odds.  
 90 (ST2). Individuals with Long-COVID were more likely to have required hospital assessment in the  
 91 acute period. LC28 disproportionately affected women (14.9%) compared to men (9.5%),  
 92 although this sex effect was not significant in the older age-group. Long-COVID affected all  
 93 socio-economic groups (assessed using Index of Multiple Deprivation), (Supplementary Figure  
 94 2). Asthma was the only/unique pre-existing condition providing significant association with  
 95 long-COVID-19 (OR = 2.14 [1.55-2.96]).

96  
 97  
 98  
 99

Table 1. Characteristics of COVID-19 by duration of symptoms.

	Overall	Short	LC28 (including LC56)	LC56
<b>Number</b>	4182	1591	558	189
<b>GB/SE/US</b>	3491 / 473 / 218	1365 / 139 / 87	466/57/35	165/12/12
<b>Male (%)</b>	28.5	32.7	20.3***	16.9*
<b>Age (years)</b>	42.8 (13.4)	40.1 (13.6)	48.9 (12.7)***	50.9 (12.5)***
<b>Age group</b>	2627/1195/96	1122/331/38	259/262/24	69/96/11

<b>Obese (%)</b>	26.3	23.8	27.6*	26.5
<b>BMI</b>	27.3 (5.9)	26.8 (5.7)	27.5 (5.7)	27.5 (5.8)
<b>Asthma (%)</b>	10.0	7.7	15.8***	18.0***
<b>Lung (%)</b>	13.6	12.8	16.5**	15.9
<b>Diabetes (%)</b>	2.9	3.0	3.9	5.8*
<b>Heart (%)</b>	1.9	1.7	3.2**	4.8**
<b>Kidney (%)</b>	0.6	0.5	0.9	0.5
<b>IMD (average decile)</b>	6.4 (2.7)	6.3 (2.7)	6.7 (2.8)	6.6 (2.9)
<b>IMD quintiles<sup>⌘</sup></b>	158 / 194 / 830 / 363 / 1653	64 / 75 / 334 / 132 / 634	23 / 23 / 86 / 49 / 240	10 / 9 / 26 / 18 / 88
<b>Visit to hospital (%)</b>	13.9	7.0	31.5***	43.9***
<b>Number of symptoms</b>	5.9 (2.83)	5.0(2.7)	6.9 (2.9)***	7.0 (3.1)***

100 \* indicates  $p < 0.1$  \*\*  $< 0.05$  \*\*\*  $< 0.01$  when comparing to short covid. Comparison are performed with respect to  
 101 the “short duration” group. Oneway ANOVA test are performed for continuous variables and chi square tests are  
 102 performed when comparing proportions.

103 ⌘ IMD information is only available for app users from the UK who have entered a complete post code  
 104 Acronyms: GB – Great Britain / SE – Sweden / US – United States / IMD – Index of multiple deprivation

105  
 106 Fatigue (97.7%) and headache (91.2%) were the most reported symptoms in those with Long-  
 107 COVID, followed by anosmia and lower respiratory symptoms. Notably, while fatigue was  
 108 reported continuously, other symptoms such as headache are reported intermittently (Figure 2,  
 109 supplementary Table s1). To get better insight into the reported symptoms, we additionally  
 110 analysed free text responses which were more common in Long-COVID cases (81%) than Short-  
 111 COVID (45%). Cardiac symptoms (palpitations, tachycardia) were over-represented in the LC28  
 112 group (6.1%) compared to in short-COVID (0.5%) ( $p < 0.0005$ ) as were concentration or memory  
 113 issues (4.1% vs 0.2%) ( $p < 0.0005$ ), tinnitus and earache (3.6% vs 0.2%  $p < 0.0005$ ) and peripheral

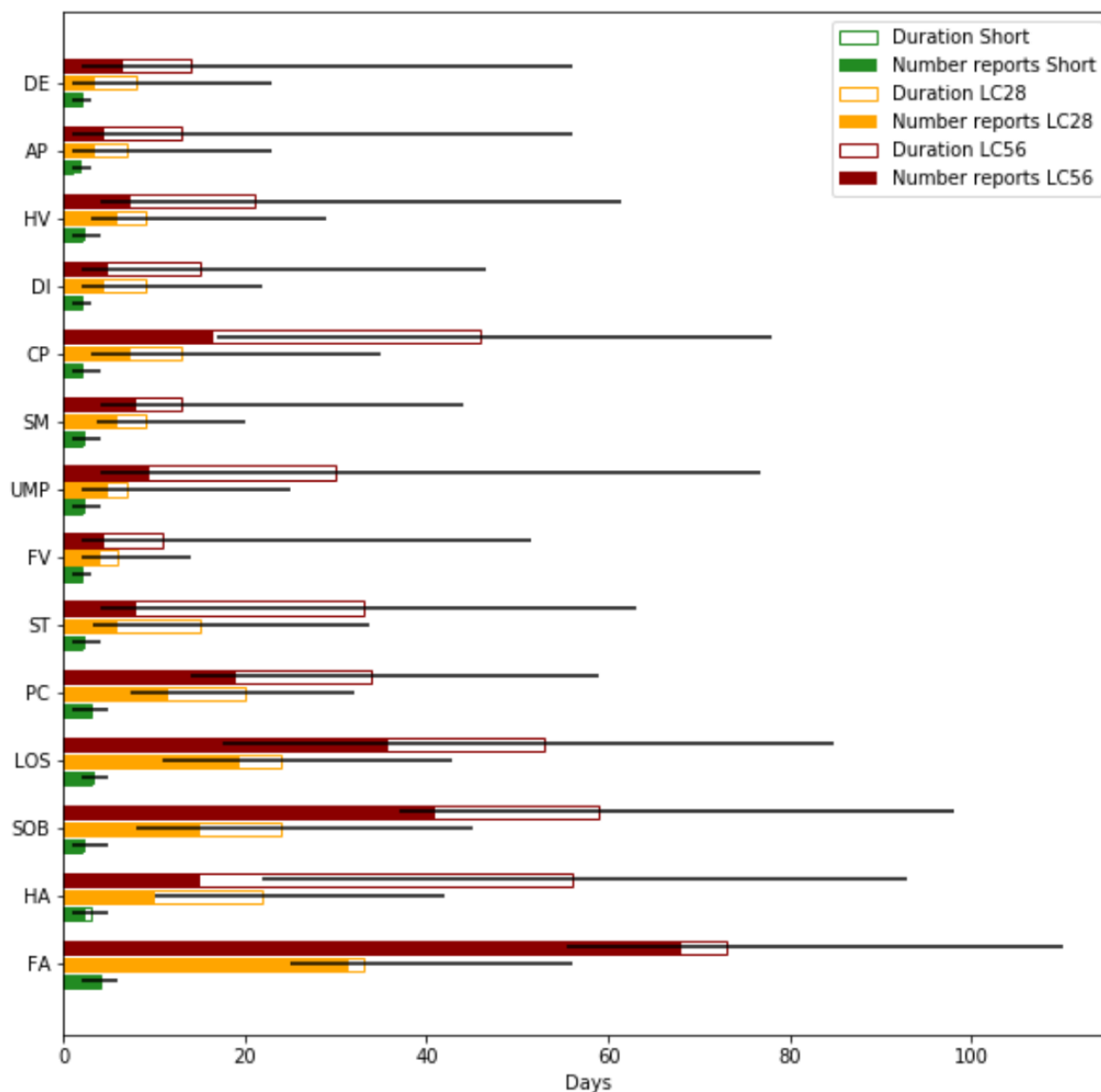
114 neuropathy symptoms (pins and needles and numbness) (2% vs 0.5%) ( $p=0.004$ ). Most of these  
115 symptoms were reported for the first time 3-4 weeks post symptom onset.

116

117 We examined whether there were different types of symptomatology within Long-COVID. We  
118 found two main patterns: those reporting exclusively fatigue, headache and upper respiratory  
119 complaints (shortness of breath, sore throat, persistent cough and loss of smell) and those with  
120 multi-system complaints including ongoing fever and gastroenterological symptoms  
121 (Supplementary figure 3). In the individuals with long duration (LC28), ongoing fever OR 2.16  
122 [1.50 - 3.13] and skipped meals OR 2.52 [1.74; 3.65] were strong predictors of a subsequent  
123 hospital visit. Details of the frequency of symptoms persisting beyond 28 and 56 days after  
124 disease onset are provided in Supplementary table 3.

125

126



127  
 128 **Figure 2** : Symptoms by duration. For each symptom (ordered from top to bottom by increasing frequency of  
 129 occurrence) the median duration of report is presented by the total (hollowed) bar height, with associated  
 130 interquartile range represented by the black line, for the short, LC28 and LC56 durations. The filled bars represent  
 131 the number of times a report has been given. This highlights the differences in the symptoms in terms of their  
 132 intermittence throughout the course of the disease. (Abbreviations DE – delirium, AP – Abdominal Pain, HV –  
 133 Hoarse Voice, DI – Diarrhoea, CP – Chest Pain, SM – skipped meals, UMP – Unusual Muscle pains, FV – Fever, ST –  
 134 Sore Throat, PC – Persistent Cough, LOS – Loss of smell, SOB – Shortness of breath, HA – Headache, FA – Fatigue)

135  
 136  
 137 Individuals with long-COVID were more likely to report relapses (16.0%), compared to those not  
 138 reporting long symptom duration (8.4%) ( $p < 0.0005$ ). In comparison, in the matched group of  
 139 SARS-CoV2 negative tested individuals, a new bout of illness was reported in 11.5% of cases.

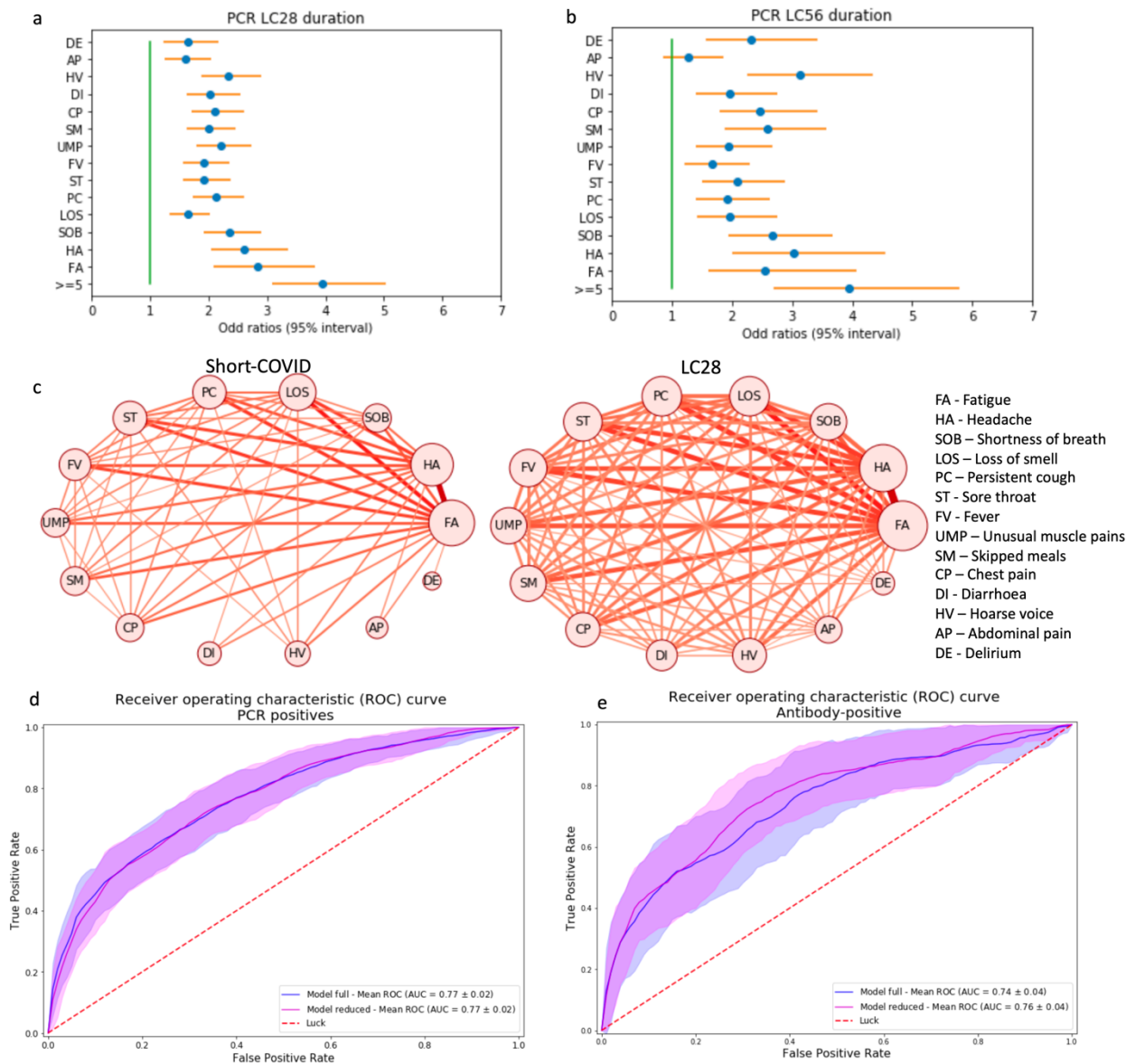
140 Relapse in the context of long-COVID was longer than in the matched controls (median = 9 [5-  
141 18] vs 6 [4-10] days).

142  
143 We explored how to predict risk of Long-COVID from data available early in the disease course.  
144 Individuals reporting more than 5 symptoms in the first week (the median number reported)  
145 were significantly more likely to go on to experience LC28, (OR=3.95 [3.10;5.04]). This strongest  
146 risk factor was predictive in both sexes and all age groups (supplementary Figures 4, a-e).

147  
148 When analysed individually after adjusting for age and sex, every symptom in isolation was  
149 positively predictive of longer illness duration. The five symptoms experienced during the first  
150 week most predictive of Long-COVID were: fatigue OR=2.83 [2.09; 3.83], headache OR=2.62  
151 [2.04;3.37], dyspnoea OR=2.36 [1.91;2.91], hoarse voice OR=2.33 [1.88 - 2.90] and myalgia  
152 OR=2.22 [1.80;2.73] (Figure 3). Similar patterns were observed in men and women. In adults  
153 aged over 70, loss of smell (which is less common) was the most predictive of long-COVID  
154 OR=7.35 [1.58 - 34.22] before fever OR=5.51 [1.75 - 17.36] and hoarse voice  
155 OR=4.03[1.21,13.42] (Supplementary figures 4). Plotting frequency of co-occurrence of  
156 symptoms in short-COVID versus long-COVID further illustrates the importance of early multi-  
157 symptom involvement (Figure 3c).

158





159  
 160  
 161  
 162 **Figure 3:** Symptom correlates of long-COVID for LC28 (a) and LC56 (b) with correction for age and gender. c) Co-  
 163 occurrence network of symptom pairs with the frequency of symptom report as the size of the node and the  
 164 likelihood of symptom pair co-occurrence by the weight of the edge linking them. Edges representing a co-  
 165 occurrence of less than 10% were removed. d) – Receiver Operating Characteristic (ROC) curve of the cross-  
 166 validated full and reduced models on the PCR cohort. e)– ROC curve when training on the whole PCR cohort and  
 167 testing on the antibody-positive cohort for the full (blue) and reduced (magenta) model. Random predictive  
 168 probability is indicated in both panels as a dashed red line. (Abbreviations DE – delirium, AP – Abdominal Pain, HV  
 169 – Hoarse Voice, DI – Diarrhoea, CP – Chest Pain, SM – skipped meals, UMP – Unusual Muscle pains, FV – Fever, ST –  
 170 Sore Throat, PC – Persistent Cough, LOS – Loss of smell, SOB – Shortness of breath, HA – Headache, FA – Fatigue)  
 171

172 We further created Random Forest Prediction models using a combination of the first week's  
 173 symptom reporting, personal characteristics and comorbidities. Using all features, the average

174 ROC AUC was 76.7% (SD=2.5) (Figure 3d) in the classification between short-COVID and LC28.  
175 The strongest predictor was age (29.2 %) followed by the number of symptoms during the first  
176 week (16.3%) and BMI (10.8%) while gender (3.7%) was ranked 6th shortly after hoarse voice  
177 (4.1) and shortness of breath (3.8). All individual symptoms, except abdominal pain and  
178 confusion, surpassed the comorbidity features. The ranking of feature importance was  
179 relatively similar across specific age group models. However, in the over 70s group it appeared  
180 that early features such as fever, loss of smell and comorbidities (especially heart and lung  
181 disease) were important, and thus could be considered ‘red flags’ in older adults  
182 (supplementary figure 6).  
183  
184 We simplified the prediction model to include only symptom number in the first week with age,  
185 and sex in a logistic regression model and we obtained ROC AUC of 76.7% (SD 2.5) (Figure 3d).  
186 When optimising the balance between false positives and false negatives, we obtained a  
187 specificity of 73.4% (SD 9.7) and a sensitivity of 68.7% (SD 9.9).  
188  
189 Key predictive findings of our analysis were validated in an independent dataset of 2472  
190 individuals who reported testing antibody positive for SARS-CoV2 from 2 weeks after symptom  
191 onset where, again, the number of symptoms in the first week of illness was the strongest  
192 predictor of long-COVID, OR=5.12 [95% CI 3.65; 7.19]. The simple prediction model for Long-  
193 COVID, trained on the PCR positive cohort and including number of distinct symptoms  
194 experienced during the first week, age, and sex was similarly predictive of LC28, with a ROC  
195 AUC of 76.3% (SD=3.7%) (Figure 5 - b).

196

197 While this study provides important insights into the disease presentation, any generalisation  
198 should be considered carefully. Our study was limited by being confined to app users who were  
199 disproportionately female and under-represented those >70years which could increase or  
200 decrease our estimate of the extent of Long-COVID respectively. Applying a weighting following  
201 the UK population (see Supplementary Methods) the estimated proportion of people  
202 experiencing symptomatic COVID-19 going on to suffer long-COVID were similar: 14.5%, 5.1%  
203 and 2.2% for 4, 8- and 12-weeks duration respectively. These estimates may still be  
204 conservative: whilst estimates could be inflated due to PCR testing in the first wave being  
205 restricted to those more severely unwell, or if regular logging may have encouraged more  
206 symptoms to be noticed, Long-COVID may here be underestimated if individuals with  
207 prolonged symptoms were more likely to stop logging symptoms on the app. We had  
208 insufficient numbers to explore risk factors for disease over 2 months and were unable to  
209 analyse the impact of ethnicity due to incomplete data in this subset. In addition, while the list  
210 of symptoms on the app is necessarily non-exhaustive, the analysis of the free-text responses  
211 allowed us to highlight other symptoms present in long-COVID, such as cardiac and neurological  
212 manifestations starting generally a few weeks after the symptom onset. With emerging  
213 evidence of ongoing myocardial inflammation and change in neurological markers <sup>8,9</sup> associated  
214 with COVID-19, this calls for specific studies of cardiac and neurological longer-term sequelae of  
215 COVID-19.

216

217 At the population level, it is critical to quantify the burden of Long-COVID to better assess its  
218 impact on the healthcare system and appropriately distribute resources. In our study,  
219 prospective logging of a wide range of symptoms allowed us to conclude that the proportion of  
220 people with symptomatic COVID-19 who experience prolonged symptoms is considerable, and  
221 relatively stable across three countries with different cultures. Whether looking at a four-week  
222 or an eight-week threshold for defining long duration, those experiencing Long-COVID were  
223 consistently older, more female and were more likely to require hospital assessment than in the  
224 group reporting symptoms for a short period of time. The multi-system nature of the initial  
225 disease in Long-COVID was illustrated by the importance of the number of symptoms, and co-  
226 occurrence networks showing that those going on to experience long-COVID had greater  
227 number of concurrent symptoms, therefore supporting the need for holistic support <sup>10</sup>. While  
228 asthma was not reported as a factor of risk for hospitalisation in <sup>11</sup>, its association with Long-  
229 COVID warrants further investigation.

230

231 We found early disease features were predictive of duration. With only three features - number  
232 of symptoms in the first week, age and sex, a simple scoring derived from a logistic regression  
233 was able to accurately distinguish individuals with Long-COVID from those with short duration.  
234 Importantly, the model generalised well to the population reporting antibody testing. This  
235 important information could feature in highly needed targeted education material for both  
236 patients and healthcare providers. Moreover, the method could help determine at-risk groups  
237 and could be used to target early intervention trials of treatment (for example, of

238 dexamethasone<sup>12</sup> and remdesivir<sup>13</sup>) and clinical service developments to support rehabilitation  
239 in primary and specialist care<sup>14</sup> to alleviate Long-COVID and facilitate timely recovery.

240  
241 **Ethics:** In the UK, the App Ethics has been approved by KCL ethics Committee REMAS ID 18210,  
242 review reference LRS-19/20-18210 and all subscribers provided consent. In Sweden, ethics  
243 approval for the study was provided by the central ethics committee (DNR 2020-01803).  
244 **Funding:** Zoe provided in kind support for all aspects of building, running and supporting the  
245 app and service to all users worldwide. Support for this study was provided by the NIHR-funded  
246 Biomedical Research Centre based at GSTT NHS Foundation Trust. This work was supported by  
247 the UK Research and Innovation London Medical Imaging & Artificial Intelligence Centre for  
248 Value Based Healthcare.  
249 Investigators also received support from the Wellcome Trust, the MRC/BHF, Alzheimer's  
250 Society, EU, NIHR, CDRF, and the NIHR-funded BioResource, Clinical Research Facility and BRC  
251 based at GSTT NHS Foundation Trust in partnership with KCL. ATC was supported in this work  
252 through a Stuart and Suzanne Steele MGH Research Scholar Award. CM is funded by the  
253 Chronic Disease Research Foundation and by the MRC AimHy project grant. LHN, DAD, ADJ,  
254 ADS, CG, WL are supported by the Massachusetts Consortium on Pathogen Readiness  
255 (MassCPR) and Mark and Lisa Schwartz. JM was partially supported by the European  
256 Commission Horizon 2020 program (H2020-MSCA-IF-2015-703787). The work performed on the  
257 Swedish study is supported by grants from the Swedish Research Council, Swedish Heart-Lung  
258 Foundation and the Swedish Foundation for Strategic Research (LUDC-IRC 15-0067).

259 **Competing interests:**

260 Zoe Global Limited co-developed the app *pro bono* for non-commercial purposes. Investigators  
261 received support from the Wellcome Trust, the MRC/BHF, EU, NIHR, CDRF, and the NIHR-  
262 funded BioResource, Clinical Research Facility and BRC based at GSTT NHS Foundation Trust in  
263 partnership with KCL. RD, JW, JCP, AM and SG work for Zoe Global Limited and TDS and PWF  
264 are consultants to Zoe Global Limited. LHN, DAD, JM, PWF and ATC previously participated as  
265 investigators on a diet study unrelated to this work that was supported by Zoe Global Ltd.

266 **Data and materials availability:** Data used in this study is available to bona fide researchers  
267 through UK Health Data Research using the following link

268 <https://web.www.healthdatagateway.org/dataset/fddcb382-3051-4394-8436-b92295f14259>

269  
270

271 **References**

- 272
- 273 1. Wiersinga, W. J., Rhodes, A., Cheng, A. C., Peacock, S. J. & Prescott, H. C.  
274 Pathophysiology, Transmission, Diagnosis, and Treatment of Coronavirus Disease 2019  
275 (COVID-19): A Review. *JAMA - Journal of the American Medical Association* vol. 324 782–  
276 793 (2020).
  - 277 2. Sheehy, L. M. Considerations for postacute rehabilitation for survivors of COVID-19.

- 278 *Journal of Medical Internet Research* vol. 22 (2020).  
279 3. Alwan, N. A. A negative COVID-19 test does not mean recovery. *Nat.* 2020 5847820  
280 (2020).  
281 4. Menni, C. *et al.* Real-time tracking of self-reported symptoms to predict potential COVID-  
282 19. *Nat. Med.* **26**, 1037–1040 (2020).  
283 5. Drew, D. A. *et al.* Rapid implementation of mobile technology for real-time epidemiology  
284 of COVID-19. *Science (80-. )*. eabc0473 (2020) doi:10.1126/science.abc0473.  
285 6. Sudre, C. H. *et al.* Symptom clusters in Covid19: A potential clinical prediction tool from  
286 the COVID Symptom study app. *medRxiv* 2020.06.12.20129056 (2020)  
287 doi:10.1101/2020.06.12.20129056.  
288 7. Cirulli, E. T. *et al.* Long-term COVID-19 symptoms in a large unselected population.  
289 *medRxiv* (2020) doi:10.1101/2020.10.07.20208702.  
290 8. Mitrani, R. D., Dabas, N. & Goldberger, J. J. COVID-19 cardiac injury: Implications for long-  
291 term surveillance and outcomes in survivors. *Heart. Rhythm* (2020)  
292 doi:10.1016/j.hrthm.2020.06.026.  
293 9. Padda, I., Khehra, N., Jaferi, U. & Parmar, M. S. The Neurological Complexities and  
294 Prognosis of COVID-19. *SN Compr. Clin. Med.* (2020) doi:10.1007/s42399-020-00527-2.  
295 10. *Living with Covid19*. <https://evidence.nihr.ac.uk/themedreview/living-with-covid19/>  
296 (2020) doi:10.3310/themedreview\_41169.  
297 11. Robinson, L. B. *et al.* Title: COVID-19 severity in asthma patients: A multi-center matched  
298 cohort study. *medRxiv* 2020.10.02.20205724 (2020) doi:10.1101/2020.10.02.20205724.  
299 12. Mahase, E. Covid-19: Demand for dexamethasone surges as RECOVERY trial publishes  
300 preprint. *BMJ* **369**, m2512 (2020).  
301 13. Beigel, J. H. *et al.* Remdesivir for the Treatment of Covid-19 — Preliminary Report. *N.*  
302 *Engl. J. Med.* (2020) doi:10.1056/nejmoa2007764.  
303 14. Greenhalgh, T., Knight, M., A’Court, C., Buxton, M. & Husain, L. Management of post-  
304 acute covid-19 in primary care. *BMJ* **370**, (2020).  
305 15. Drew, D. A. *et al.* Rapid implementation of mobile technology for real-time epidemiology  
306 of COVID-19. *Science (80-. )*. (2020).  
307 16. Spiel, C. *et al.* A Euclidean distance-based matching procedure for non randomized  
308 comparison studies. *Eur. Psychol.* **13**, 180–187 (2008).  
309  
310  
311  
312  
313  
314  
315  
316  
317  
318  
319  
320  
321

322  
323  
324  
325  
326  
327  
328  
329  
330  
331  
332  
333  
334  
335  
336  
337  
338  
339  
340  
341  
342  
343  
344

## Online methods

### Methods

#### Dataset:

Data used in this study were acquired through the COVID 19 Symptom Study app, a mobile health application developed by Zoe Global Limited with input from physicians and scientists at King’s College London, Massachusetts General Hospital, Lund and Uppsala Universities<sup>15</sup>. The app, which collects data on personal characteristics and through prospective logging of symptoms, was launched in the UK, the US and Sweden between 24<sup>th</sup> March (UK) and 30<sup>th</sup> April (Sweden), and rapidly reached over 4 million users. This study focuses on 4182 users who reported testing positive to SARS-CoV2 by PCR swab test and had a disease onset between 25<sup>th</sup> March 2020 and 30<sup>th</sup> June 2020, for whom onset date matched with date of test and duration of symptoms could be estimated (Supplementary figure 1 presents a flowchart of study inclusion). We repeated analyses in an independent subgroup of 2472 app users who reported positive testing for antibodies against SARS-CoV2 more than 2 weeks after symptom onset, but without swab test results (Supplementary Figure 1).

To understand how the relapse rate compared to a comparable population not suffering from COVID-19, we selected an additional matched sample from all app users meeting study inclusion criteria but testing negative by PCR swab test, choosing for each COVID+ case the individual from the negative group with the smallest Euclidean distance based on sex, age and BMI <sup>16</sup>.

345

346

347 **Definitions**

348 Onset of disease was defined as the first day of reporting at least one symptom lasting more  
349 than one day.

350 Disease end was defined as the last day of unhealthy reporting before reporting healthy for  
351 more than one week or the last day of reporting with less than 5 symptoms before ceasing  
352 using the app. For the participants included who ceased using the app with a cumulative  
353 number of symptoms of less than 5, disease end was considered as the last log.

354 Relapse was defined as 2 or more days of symptoms within a 7-day window after one week of  
355 healthy logging, given initial symptoms close to a positive swab test.

356

357 Long-COVID was defined as symptoms persisting for a period of more than 4 weeks (28 days  
358 LC28), more than 8 weeks (56 days, LC56) or more than 12 weeks (LC94) between symptom  
359 onset and end, while short duration was defined as the interval between symptom onset and  
360 end of less than 10 days, without a subsequent relapse (Short-COVID).

361

362 **Inclusion/Exclusion criteria**

363 To be included in the subsequent analysis, users of the COVID Symptoms Study app were  
364 selected based on the following criteria:



365 *Inclusion criteria:* Age  $\geq$ 18 yrs; reporting a positive SARS-CoV-2 swab test (PCR) confirming the  
366 diagnosis of COVID-19; disease onset between 14 days before and 7 days after the test date,  
367 and before the 30th June 2020 (to limit right censoring).

368 *Exclusion criteria:* individuals who started app reporting when already unwell; users reporting  
369 exclusively healthy throughout the study period; users with gaps of more than 7 days after an  
370 unhealthy report and not reporting any hospital visit (to account for gaps due to  
371 hospitalisation). In addition, individuals reporting for less than 28 days but reporting more than  
372 5 symptoms at their last log were excluded, as duration could not be ascertained.

373

374

### 375 **Statistical testing and modelling**

376 Data collected prospectively until 02 September were included to allow sufficient time to  
377 ascertain duration. Univariate and multivariate logistic regression was used to assess symptoms  
378 associated with short- and long-COVID respectively, adjusting for sex and age, using  
379 Statsmodels v0.11.1 Python3.7. Separate models were fitted to subgroups stratified by sex and  
380 age (18-49; 50-69; >70). For analysis of relapse, results were compared for the long-COVID  
381 group to the whole sample using Mann Whitney U test.

382

383 We used a K-mode clustering analysis to investigate whether there was evidence of different  
384 sub-types of long-COVID, using the kmode package v0.10.2. Number of ideal symptom clusters  
385 was obtained via a silhouette analysis with dice distance metrics. Differences between long-

386 COVID and short-COVID were visualised using a co-occurrence network (networkx for  
387 visualisation), applying a 10% threshold to remove rare edges to aid visualisation.  
388  
389 Finally, to create a predictive model for long-COVID, we used sklearn v0.22.2.post1 package,  
390 training random forest classifiers with stratified repeated cross-validation (10 times, 5 folds)  
391 with hyperparameter grid search including, as features, information available during the first  
392 week of illness, reported comorbidities (asthma, lung disease, heart disease, kidney disease and  
393 diabetes) and personal characteristics (BMI, age, sex). In addition to a global consideration of  
394 the studied sample population, separate models stratified by age were also entrained using a  
395 similar cross-validation setting (hyperparameter search and stratified sampling). After running  
396 the cross-validation for each model structure (50 times), the feature importance was averaged  
397 across the different repeated folds. A final simplistic model using the key personal  
398 characteristics and number of first week symptoms was further tested.  
399 Using only 3 features, a logistic regression model was then assessed using the same  
400 stratification and cross-validation.

401  
402 To assess performance on the test dataset (antibody positive), cross-validation was also  
403 performed to obtain an indication of the variability in performance using models that were  
404 trained on the whole PCR positive sample.

405 For the reduced logistic regression model, the score was given by the following formula:

406

407  $S = 0.259503 * \text{NumberSymptoms} + 0.055457 * \text{Age} - 0.633310 * \text{Sex}$  where sex is  
408 encoded as 1 – Female / 2 – Male

409

#### 410 **Matching with negative sample:**

411 The negative cases selected for matching followed the same inclusion rules and were matched  
412 to the positive samples using the minimum Euclidean distance between the vectors of features  
413 created by age, BMI and sex. Sex feature was multiplied by 100 to ensure balance between  
414 feature strength.

415

#### 416 **Rebalancing to UK population demographics**

417 Lastly, the rebalancing with respect to the UK population was performed by reweighting the  
418 age/sex proportions of LC28 in the studied sample by the one of the UK population based on  
419 census data from 2018. The weighting per age group is described in the table below

420

	Female	Male
18-49	0.263	0.264
50-69	0.156	0.150
>=70	0.093	0.075

421

422

423

424

425

426

427

428

429

430

431

432

433

434

435

436

437

438

439

440

441

442

443

444

445

446

447

448

449

450

451

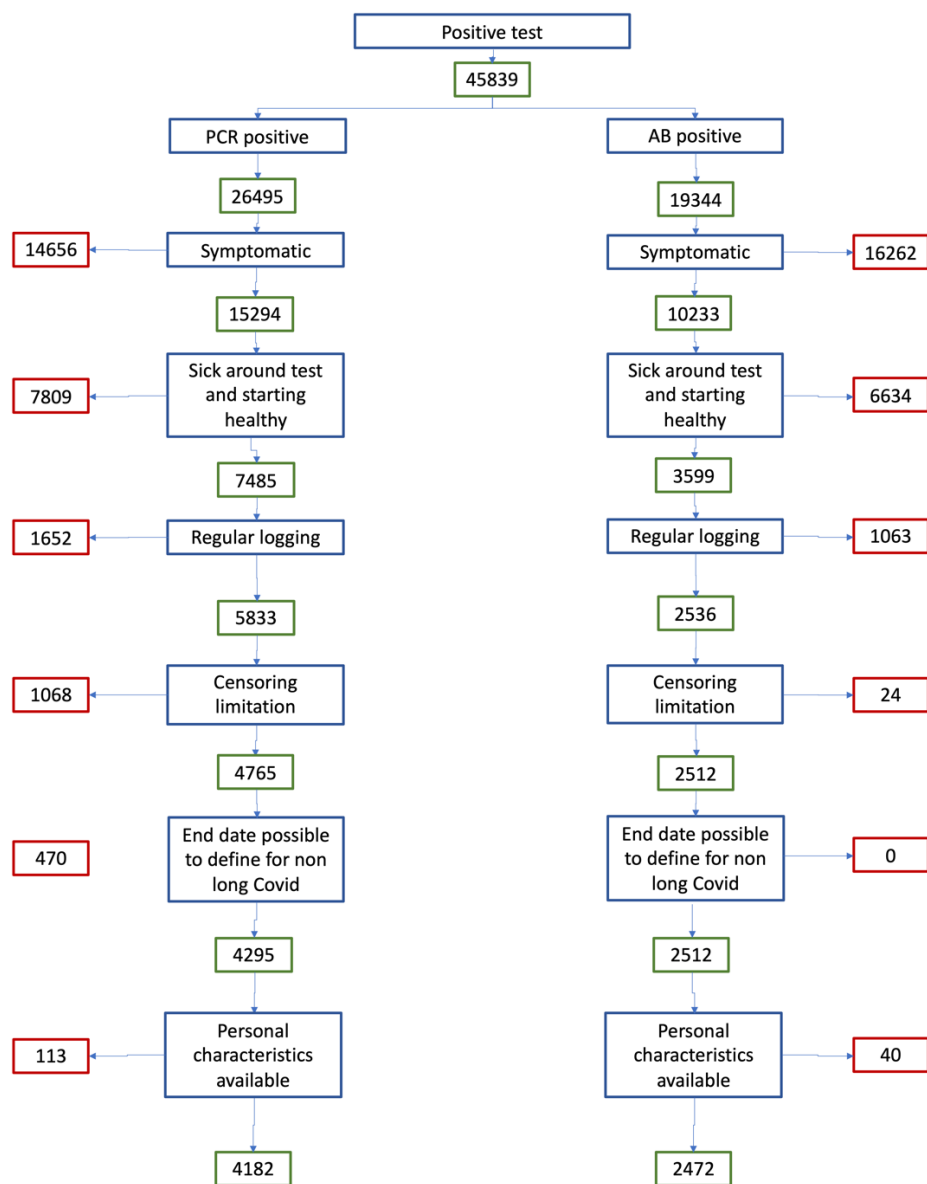
452

453

454

455 **Supplementary tables and figures**

456  
 457 Supplementary Figure 1 presents a flowchart of the study inclusion. Individuals reporting  
 458 symptoms for at most 1 day are considered for the purpose of this analysis to be asymptomatic.  
 459 We further excluded users who joined the app already unhealthy, for which the onset of  
 460 disease was not calculable. Of the remainder, we further excluded those who only reported  
 461 intermittent unhealthy report and restricted to individuals reporting prospective symptoms at  
 462 least once a week over the course of the disease. The left part of the diagram represents the  
 463 inclusion flowchart for the individuals reporting a positive swab test while the right side reflects  
 464 the inclusion pathway for individuals with antibody positive test only.  
 465



466  
 467  
 468

469  
470  
471  
472  
473  
474  
475  
476  
477  
478

**Supplementary Table 1** Compares the frequency (over the whole disease course), existence in the first week, duration (difference between first and last day at which a symptom is reported) and number of reports of a given symptom for Short-COVID, LC28 and LC56. Symptoms are ordered by overall frequency in the LC28 group. Duration and number of reports are presented as median [IQR] while the frequencies are presented as percentages

	Occurrence overall			Occurrence first week			Duration			Number of reports		
	Short	L28	L56	Short	L28	L56	Short	L28	L56	Short	L28	L56
<b>FA</b>	76.1%	97.7%	96.8%	75.9%	89.1%	87.8%	4 [2 ; 6]	33 [25 ; 56]	73 [55.5 ; 110]	4 [2 ; 6]	31.5 [19.5 ; 54.5]	68 [39 ; 118.5]
<b>HA</b>	65.6%	91.2%	93.7%	65.4%	80.6%	81.5%	3 [1 ; 5]	22 [10 ; 42]	56 [22 ; 93]	2.5 [1.5 ; 4]	10 [4.5 ; 19.5]	15 [7 ; 34.5]
<b>SOB</b>	29.4%	70.8%	75.7%	29.2%	48.4%	51.3%	2 [1 ; 5]	24 [8 ; 45]	59 [37 ; 98]	2.5 [1.5 ; 4.5]	15 [5.5 ; 34.5]	41 [15.75 ; 80.25]
<b>LOS</b>	49.2%	72.0%	75.1%	49.0%	56.8%	58.2%	3 [2 ; 5]	24 [11 ; 42.75]	53 [17.5 ; 84.75]	3.5 [2 ; 5]	19.5 [9 ; 34]	35.75 [11.63 ; 68.88]
<b>PC</b>	40.5%	68.6%	62.4%	40.4%	57.0%	52.9%	3 [1 ; 5]	20 [7.5 ; 32]	34 [14 ; 59]	3 [1.5 ; 4.5]	11.5 [4.5 ; 22.5]	19 [7 ; 40.5]
<b>ST</b>	41.2%	67.0%	72.5%	41.2%	53.6%	54.0%	2 [1 ; 4]	15 [3.25 ; 33.75]	33 [4 ; 63]	2.5 [1.5 ; 4]	6 [3 ; 12]	8 [3 ; 17]
<b>FV</b>	36.1%	62.9%	58.7%	36.1%	50.5%	45.5%	2 [1 ; 3]	6 [2 ; 14]	11 [2 ; 51.5]	2 [1.5 ; 3]	4 [2 ; 7.75]	4.5 [2 ; 11.5]
<b>UMP</b>	29.2%	64.0%	64.6%	29.2%	47.5%	43.4%	2 [1 ; 4]	7 [2 ; 25]	30 [4 ; 76.75]	2.5 [1.5 ; 3.5]	5 [2 ; 11]	9.5 [3 ; 30.63]
<b>SM</b>	29.9%	59.5%	66.7%	29.9%	46.6%	52.4%	2 [1 ; 4]	9 [3.75 ; 20]	13 [4 ; 44]	2.5 [1.5 ; 4]	6 [3 ; 14]	8 [3.5 ; 18.88]
<b>CP</b>	28.2%	60.0%	63.0%	28.1%	42.5%	45.0%	2 [1 ; 4]	13 [3 ; 35]	46 [17 ; 78]	2 [1.5 ; 4]	7.5 [2.5 ; 16.5]	16.5 [7.25 ; 42]
<b>DI</b>	20.4%	51.1%	54.5%	20.1%	34.6%	33.3%	2 [1 ; 3]	9 [2 ; 22]	15 [2 ; 46.5]	2 [1 ; 3]	4.5 [2 ; 9]	5 [2 ; 12.25]
<b>HV</b>	23.0%	53.0%	61.4%	22.9%	41.4%	47.6%	2 [1 ; 4]	9 [3 ; 29]	21 [4 ; 61.5]	2.5 [1.5 ; 4]	6 [3 ; 14.5]	7.5 [3.5 ; 20.625]
<b>AP</b>	17.2%	44.1%	49.2%	17.0%	26.0%	22.2%	1 [1 ; 3]	7 [1 ; 23]	13 [1 ; 56]	2 [1 ; 3]	3.5 [1.5 ; 8.5]	4.5 [2 ; 9.5]
<b>DE</b>	11.8%	30.3%	38.6%	11.7%	19.0%	24.3%	2 [1 ; 3]	8 [1 ; 23]	14 [2 ; 56]	2 [1 ; 3.5]	3.5 [1.5 ; 9]	6.5 [2 ; 16.5]

479  
480  
481  
482  
483

**Supplementary Table 2 – Odd ratio of LC28 and LC56 per decade when compared to 18-30 category separating male and females**

	Female		Male	
	LC28	LC56	LC28	LC56
30-40	2.11 [1.38 ; 3.23]	2.19 [1.02 ; 4.73]	2.62 [1.09 ; 6.27]	4.12 [0.49 ; 34.67]
40-50	4.35 [2.9 ; 6.53]	4.14 [2.02 ; 8.52]	2.24 [0.9 ; 5.62]	3.52 [0.39 ; 31.91]

50-60	8.03 [5.37 ; 12]	8.61 [4.33 ; 17.1]	6.65 [2.8 ; 15.8]	11.49 [1.44 ; 91.29]
60-70	6.53 [4.02 ; 10.6]	7.2 [3.31 ; 15.69]	7.5 [2.98 ; 18.9]	14 [1.68 ; 116.51]
>=70	5.46 [2.51 ; 11.85]	7.71 [2.6 ; 22.83]	8.27 [2.8 ; 24.39]	18.56 [1.99 ; 173.3]

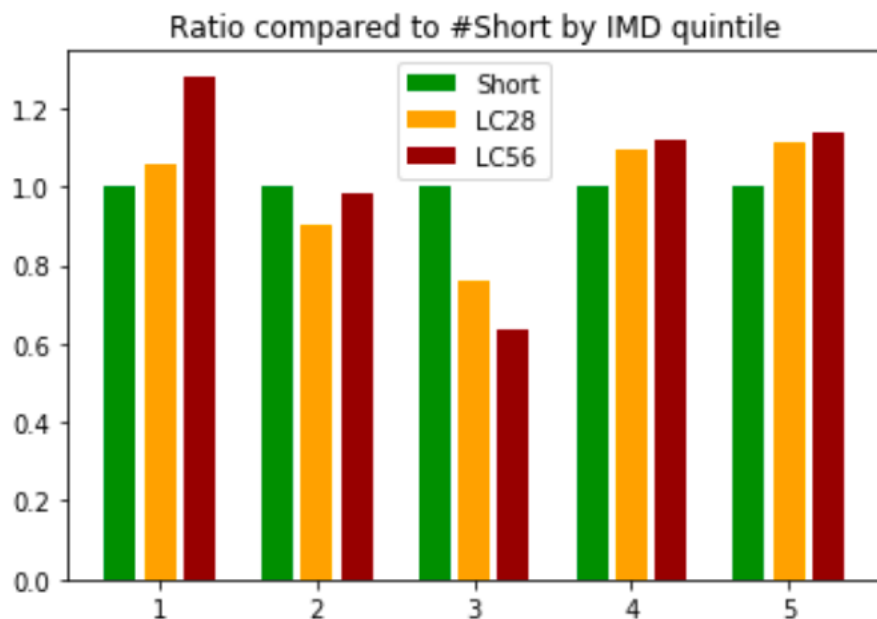
484  
485  
486  
487  
488

Supplementary Table 3 – Indication of the frequency of report of symptoms beyond 28 days and beyond 56 days in the LC28 and the LC56 groups.

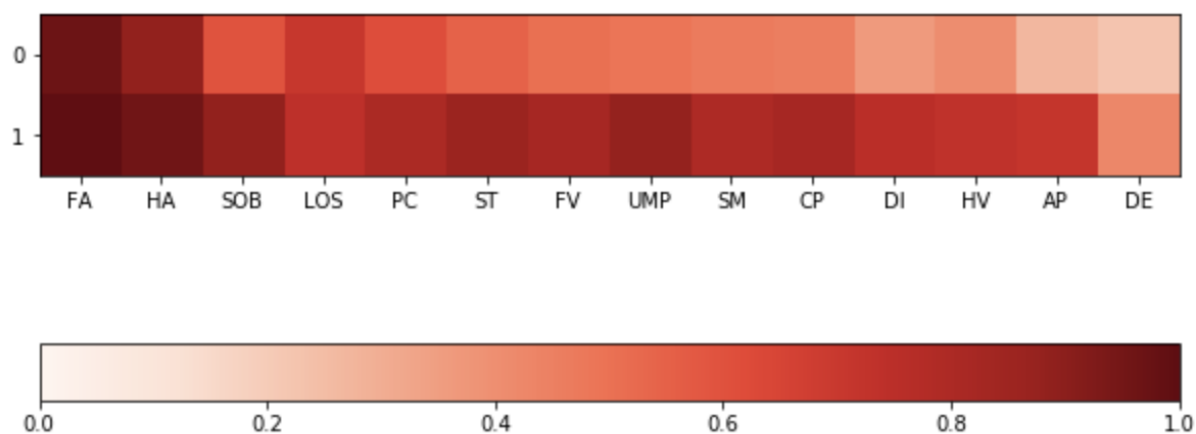
	Reported beyond 28 days in LC28	Reported beyond 56 days in LC56
<b>FA</b>	0.68	0.73
<b>HA</b>	0.40	0.53
<b>SOB</b>	0.37	0.48
<b>LOS</b>	0.39	0.39
<b>PC</b>	0.27	0.22
<b>ST</b>	0.27	0.27
<b>FV</b>	0.12	0.16
<b>UMP</b>	0.20	0.30
<b>SM</b>	0.13	0.19
<b>CP</b>	0.23	0.31
<b>DI</b>	0.15	0.20
<b>HV</b>	0.17	0.22
<b>AP</b>	0.15	0.23
<b>DE</b>	0.11	0.15

489  
490  
491  
492

Supplementary Figure 2: Ratio of LC28 and LC56 vs short-COVID by IMD quintile



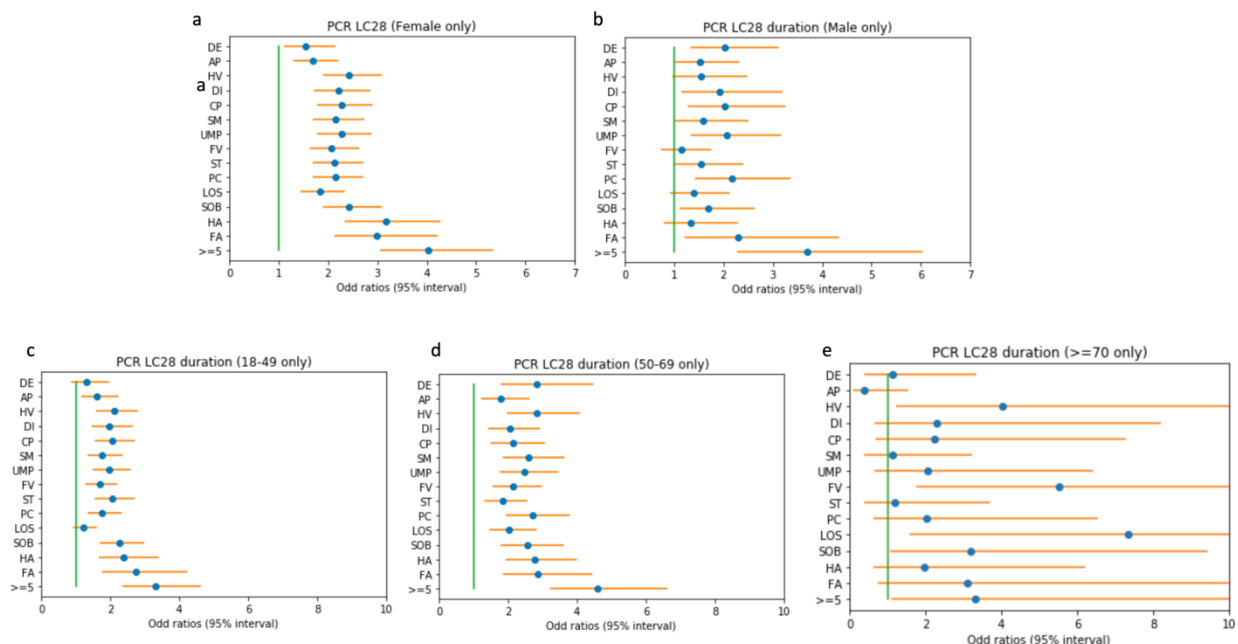
493  
 494 Supplementary Figure 3 – clustering of symptoms in the Long-COVID group indicating a  
 495 common strong higher airways component with fatigue, headache and loss of smell for both  
 496 groups and a more multi system presentation for the second group. Colouring presents the  
 497 frequency of reporting of a given symptom. Abbreviations: DE – delirium, AP – Abdominal Pain,  
 498 HV – Hoarse Voice, DI – Diarrhoea, CP – Chest Pain, SM – skipped meals, UMP – Unusual Muscle  
 499 pains, FV – Fever, ST – Sore Throat, PC – Persistent Cough, LOS – Loss of smell, SOB – Shortness  
 500 of breath, HA – Headache, FA – Fatigue  
 501



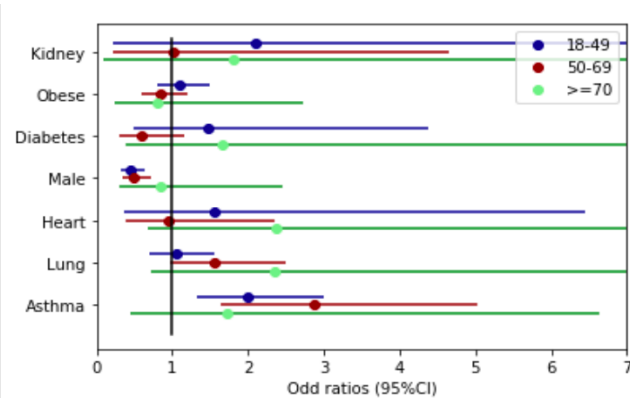
502  
 503  
 504  
 505  
 506  
 507



508 Supplementary Figure 4. Odd ratios of continuing into long Covid 28 when presenting a given  
 509 symptom during the first week correcting for age and gender (if necessary) in different  
 510 subgroups female(a), male (b), 18-49 (c), 50-69 (d), >=70 (e). Abbreviations: DE – delirium, AP –  
 511 Abdominal Pain, HV – Hoarse Voice, DI – Diarrhoea, CP – Chest Pain, SM – skipped meals, UMP  
 512 – Unusual Muscle pains, FV – Fever, ST – Sore Throat, PC – Persistent Cough, LOS – Loss of  
 513 smell, SOB – Shortness of breath, HA – Headache, FA – Fatigue  
 514  
 515  
 516



517  
 518 Supplementary Figure 5 – Odd ratio for the risk of developing Long Covid 28 for each  
 519 comorbidity or risk factors correcting for age and gender in each age group,  
 520

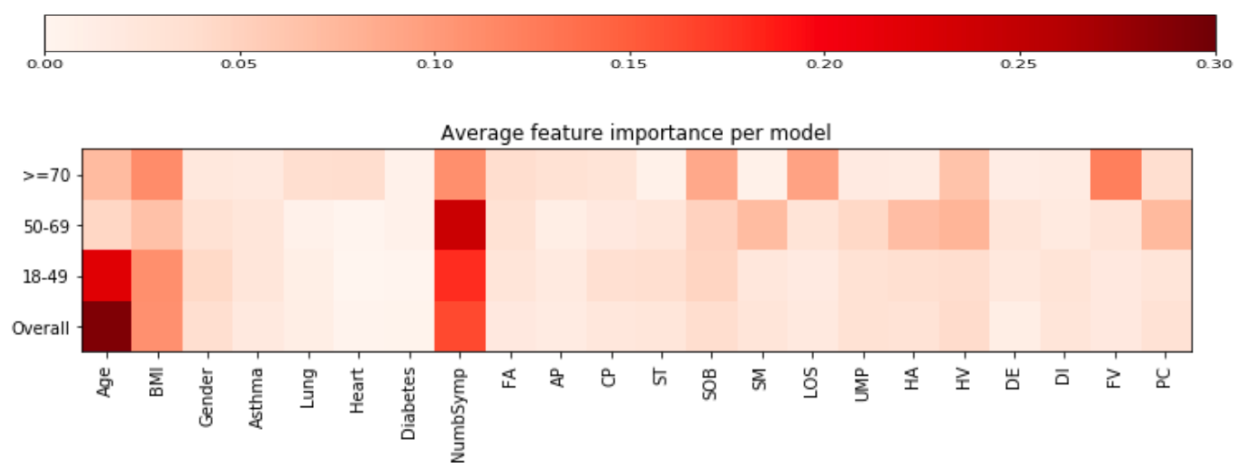


521  
 522

523 Supplementary Figure 6: Comparison of mean feature importance (proportion ranging from 0  
524 to 1) for the cross-validated random forest models across the different age groups when  
525 considering personal characteristics and presented symptoms during the first week of the  
526 disease. Abbreviations - (Abbreviations DE – delirium, AP – Abdominal Pain, HV – Hoarse Voice,  
527 DI – Diarrhoea, CP – Chest Pain, SM – skipped meals, UMP – Unusual Muscle pains, FV – Fever,  
528 ST – Sore Throat, PC – Persistent Cough, LOS – Loss of smell, SOB – Shortness of breath, HA –  
529 Headache, FA – Fatigue)

530  
531

532



533