

Testing and isolation to prevent overloaded health care facilities and to reduce death rates in the SARS-CoV-2 pandemic in Italy

Arnab Bandyopadhyay^{1,✉,*}, Marta Schips^{1,✉,*}, Tanmay Mitra¹, Sahamoddin Khailaie¹, Sebastian C. Binder¹, Michael Meyer-Hermann^{1,2,3*}

1 Department of Systems Immunology and Braunschweig Integrated Centre of Systems Biology (BRICS), Helmholtz Centre for Infection Research, Braunschweig, Germany

2 Institute for Biochemistry, Biotechnology and Bioinformatics, Technische Universität Braunschweig, Braunschweig, Germany

3 Cluster of Excellence RESIST (EXC 2155), Hannover Medical School, Hannover, Germany

✉ These authors contributed equally to this work.

* Correspondence:

mmh@theoretical-biology.de

arnab.bandyopadhyay@theoretical-biology.de

marta.schips@theoretical-biology.de

Abstract

Background

During the first wave of COVID-19, hospital and intensive care unit beds got overwhelmed in Italy leading to an increased death burden. Based on data from Italian regions, we disentangled the impact of various factors contributing to the bottleneck situation of health care facilities, not well addressed in classical SEIR-like models. A particular emphasis was set on the dark figure, on the dynamically changing hospital capacity, and on different testing, contact tracing, quarantine strategies.

Methods

We first estimated the dark figure for different Italian regions. Using parameter estimates from literature and, alternatively, with parameters derived from a fit to the initial phase of COVID-19 spread, the model was optimized to fit data (infected, hospitalized, ICU, dead) published by the Italian Civil Protection.

Results

We showed that testing influenced the infection dynamics by isolation of newly detected cases and subsequent interruption of infection chains. The time-varying reproduction number (R_t) in high testing regions decreased to < 1 earlier compared to the low testing regions. While an early test and isolate (TI) scenario resulted in up to $\sim 32\%$ peak reduction of hospital occupancy, the late TI scenario resulted in an overwhelmed health care system.

Conclusions

An early TI strategy would have decreased the overall hospital accessibility drastically and, hence, death toll ($\sim 45\%$ reduction in Lombardia) and could have mitigated the lack of health care facilities in the course of the pandemic, but it would not have kept the hospitalization amount within the pre-pandemic hospital limit. We showed that contact tracing and quarantine without testing would have a similar effect and might be an efficient strategy when sufficient test capacities are not available.

Introduction

The COVID-19 outbreak created a worldwide pandemic causing more than 4,000,000 deaths and over 190 million total cases worldwide as of July 2021 [1]. Many countries implemented non-pharmaceutical interventions (NPIs), which were effective in reducing virus spreading. This was further supported by social distancing, mask duty, and hygiene measures. Though different models of NPIs and their implementation methods have been proposed, their impact and effectiveness on disease dynamics are under scrutiny and remain a matter of global discussion [2–6]. Singapore and Hong Kong were able to contain the virus by aggressive testing [7], while South Korea adopted a trace, test, treatment strategy [8]. In a different but similarly effective approach, Japan averted the risk of contagion by isolating the whole contact clusters and by heavily relying on the self-awareness and discipline of the population [9].

The COVID-19 outbreak originated in Wuhan, People’s Republic of China, in early December 2019. Within two months, it had erupted and unfolded with tremendous speed in Italy, which became the European epicenter of disease spreading, forcing the government to impose a lockdown on March 9th, 2020. On March 19th, 3405 people had already died in Italy, thereby surpassing China, while 41035 people were diagnosed as COVID-19 positive. This induced Italy to shut down all non-essential businesses on March 21st. Despite the strict measures applied, in Lombardia alone a total of 28545 symptomatic people were infected by April 8th, accounting for 12976 hospital admissions, followed by Emilia Romagna (4130), Piemonte (3196), and Veneto (1839) [10]. These large numbers led to the complete collapse of the health care system within a few weeks of the first detection of COVID-19 cases, most notably in Lombardia where even funeral homes had been overwhelmed and were incapable of responding in a reasonable time [11]. Even though the state expanded the hospital and intensive care unit (ICU) capacities, it could not prevent the bottleneck situation of the health care system and presumably caused a large number of deaths for a prolonged period.

Many factors aggravated the COVID-19 situation in Italy, among which the distinct demographic structure of Italy with nearly 23% of the population of age 65 years or older [12], larger household size, and the prevalence of three-generation households compared to Germany [13] as well as limited hospital and ICU capacities. At the beginning of the pandemic, Italy focused on testing symptomatic patients only, which resulted in a large proportion of positive tests and high case fatality rates (CFR) compared to other countries [14]. A large proportion of cases remained undetected, which became a major driver of new infections. A different study estimates that in Italy the actual number of total infections was around 30 fold higher than reported, while for Germany it was less than ten-fold [15] (data up to March 17th 2020).

Compartmental models have been widely used to describe the dynamics of epidemics, for example, SIR model [16] that consider three compartments, namely susceptible, infected and recovered, or more complex SEIR models [17,18] that take susceptible, exposed, infectious, and recovered compartments into account. Typically, these models either exclude the undetected index cases [4,17,18] or ignore their dynamic nature [19], and structurally these models are not developed to address the load on the health care system. Besides these epidemic models, simple algorithms exist in the literature for estimating the time-varying reproduction number and have been widely used in the context of many infectious diseases (e.g., measles, H1N1 swine flu, polio, etc.) [20]. Several studies [21,22] estimated the undetected case number in Italy, but its dynamics in the context of different testing strategies and implications upon the health care system was not considered. Even though the general compartmental SIR and SEIR type models are useful in inferring epidemic spread and public health interventions, we needed to introduce additional compartments to investigate how the pandemic is shaped by several influential factors (e.g. dark numbers, regional testing strategies, hospital beds); for instance, we included a specific compartment for infected undetected cases (I_X) to analyse the impact of the region-wise undetected cases upon the evolution of the \mathcal{R}_t . Similarly, hospital (H_U and H_R) and ICU (U_D and U_R) compartments were introduced to monitor the load on the health care system.

Moreover, the absence of reliable symptom onset data and heterogeneity in the actual infectious period among the asymptomatic, pre-symptomatic, and symptomatic individuals require a more complex model that not only can accurately portray the dynamics of COVID-19 spread but also can disentangle the impact of intertwined factors like the variation of undetected components, limited and changing hospital and ICU availability.

Existing modeling studies that analyze the COVID-19 situation in Italy [19, 23] or other regions [4, 24–26] in general did not address some fundamental aspects of the ongoing pandemic like temporal dynamics of undetected infections, the benefits of a high testing and isolation strategy or the impact of a limited and dynamically changing health care capacity on the lives lost. In this study, we address the bottleneck situation of the health care facility, benefits of extending hospital infrastructure and the impact of an early testing and isolation strategy onto the health care system with a COVID-19 specific mathematical model. To evaluate the COVID-19 situation in Italy in a realistic framework, we first estimated the undetected fraction (dark figure) of infections across different regions of Italy. We used this information to determine the parameters of the model and showed that our model is structurally identifiable. We studied the influence of the dark figure and implemented NPIs on the time-dependent reproduction number, \mathcal{R}_t . With data about regional hospital and ICU bed capacities, we estimated that an extra 25% of people died in Lombardia due to the overwhelmed health care system. We investigated the impact of early testing strategy and, alternatively, of contact tracing combined with quarantine (~ 10 fold more isolation of infected) policy in the setting of elevated hospital capacity as it currently stands. This strategy would have significantly reduced the death toll by 20% to 50%.

Methods

SECIRD-model

To understand the impact of potential aggravating factors, namely infections from undetected index cases, early vs late testing strategy, and limited health care facilities on disease progression, we developed a COVID-19-specific SECIRD-model parametrized for Italy. The SECIRD-model distinguishes healthy individuals without immune memory of COVID-19 (susceptible, S), infected individuals without symptoms but not yet infectious (exposed, E) and infected individuals without symptoms who are infectious (carrier, C_I , C_R). The carriers are distinguished into a fraction α of asymptomatic (C_R) and $(1 - \alpha)$ of pre-symptomatic infected (C_I). The latter are categorized into a fraction μ of detected symptomatic (I_H and I_R) and $(1 - \mu)$ of undetected mild-symptomatic (I_X). Out of the C_I , a fraction ρ gets hospitalized (I_H) and $(1 - \rho)$ become symptomatic but recover without hospitalization (I_R). Further, compartments for hospitalization (H) and intensive care units (U) were introduced to monitor the load on the health care system. A fraction ϑ of H requires treatment in ICU (H_U) while a fraction $(1 - \vartheta)$ recovers from hospital without ICU treatment (H_R). δ and $(1 - \delta)$ represent the fraction of patients in ICU who subsequently die (U_D) or recover (U_R). The compartment (R) consists of patients recovered from different infection states. The *Reference Model* (Fig. 1; equations are in the Supplementary Material) was solved with parameters in Table 1.

Initial condition

Italian regions started documenting epidemiological data at different dates, at the earliest February 24th, 2020. As we considered a fixed incubation period of 5.2 days in our model, we assumed that at minimum, the first entry in the dataset (number of total cases) was the exposed number 5.2 days earlier. In addition to the documented infection, we calculated undocumented cases based on the estimated region-wise dark number by a Bayesian MCMC framework (see Supplementary Material). The sum of documented and undocumented cases was the initial

exposed population. We used regional population as the initial susceptible population. For all other compartments, we started the simulation with zero. The simulation began from -5.2 days with the aforementioned initial conditions, and undetected cases were split between asymptomatic and symptomatic undetected cases according to the parameters used for those compartments.

Parameterization

We distinguished physiological and behavioral model parameters. Physiological parameters depend on the nature of the virus ($R_x, x = 2, \dots, 9$) and remain unchanged throughout the analysis of the pandemic. We first determined the range of physiological values for each parameter from the literature [27, 28] (Table 1) and then estimated parameters' values from a fit to the exponential growth of case numbers (infection, hospitalized, ICUs and death cases) during the first two weeks of the pandemic. In total, 56 data points (14 daily data for those four observables) were used to estimate the physiological parameters. This initial phase was not yet affected by NPIs, public awareness, or an overwhelmed health care system and, thus, reflects viral properties. Some of the physiological parameters may be internally linked. For instance, hospitalization and ICU cases increase with infection cases and disentangling those internal relations is difficult with limited data availability. It is likely that the best combination of parameters contains those internal relations. We assumed that the virus variant remained the same during the investigation period, therefore we kept physiological parameters constant throughout. However, environmental factors, testing policy, interventions, public behavior, self isolation, hospital accessibility, etc. might have distorted such relations (e.g., the rate of increase in hospital and ICU cases as infection increases differ in different phases of the pandemic) and substantially altered the disease dynamics by impacting the transmission probability, dark number, hospitalizations and death rate. These contingent factors affect the behavioral parameters ($\rho, \vartheta, \delta, R_1, R_{10}$). We estimated the behavioral model parameters by minimizing the sum of squared differences between the observed data (active infections, hospitalized, ICU patients and death numbers (Italy Data on Coronavirus 2020 [29])) and model simulations using Matlab's nonlinear least-squares optimizer. This procedure was repeated separately for each region in Italy in moving time windows of 7 days to account for local specifics and temporal changes in disease transmission. This moving-window technique with the size of a calendar week reduces periodic fluctuations that are an artifact of the unequal distribution of tests among the weekdays.

Perturbation and parameter identifiability

To generate the standard deviation for \mathcal{R}_t , we perturbed the behavioral parameters ($\rho, \vartheta, \delta, R_1, R_{10}$) 10% of their optimized value and sampled uniformly within this range such that the total parameter variation, κ , defined as $\log(\kappa) = \sum_{n=1}^L |\log \frac{k_n^L}{k_n^0}|$ [48], remains within 10% of its reference value. k^n, k_n^0 and L represent the parameters of the altered system, the reference system and the total number of parameters, respectively. We generated dynamics for 100 perturbed parameter sets for the statistical analysis.

We addressed parameter identifiability in two ways: Structural identifiability based on synthetic outbreak data and practical identifiability based on real data. In the first method, we randomly sampled parameters within a range specified in Table 1 and by using random initial conditions of model state variables. Then we used the resulting dynamics of the state variables as model observables and checked for a unique solution in the parameter space. We repeated this procedure 100 times (see Fig S5 for a typical result). In the second method, we considered nationwide Italy data for the period February 24th to May 22nd, 2020 and fixed the physiological parameters as described in the *Parameterization* section. As we are estimating behavioral parameters ($\rho, \vartheta, \delta, R_1, R_{10}$) by considering a moving time windows of 7 days, we checked practical identifiability of these parameters in each time window. We found that the

Table 1: Parameter ranges used in the *Reference Model*: determination of the boundaries for literature-based parameter set was based on the interpretation of the values given in the references [27, 28, 30].

Parameter	Comments/ References	Description	Parameter ranges from literature	
			Min	Max
R_1	Time-dependent	transmission probability of COVID-19 per each contact made with an infectious person (C_I, C_R, I_X, I_R and I_H in the model)		
R_2	[31–34]	the inverse of R_2 represents latent, non-infectious period following the transmission of COVID-19. $1/R_2 = 5.2 - 1/R_3$; median incubation period is 5.2 days		
R_3	[31–34]	the inverse of R_3 represents the pre-symptomatic infectious period	$\frac{1}{4.2}$	$\frac{2}{5.2}$
R_4	[35–37]	the inverse of R_4 represents the infectious period for the mild symptomatic cases without requiring hospitalization (including the undetected symptomatic people (I_X))	$\frac{1}{14}$	$\frac{1}{7}$
R_5	[27, 28, 38]	the inverse of R_5 represents the duration for which the hospitalized cases stay in general hospital care before discharge without requiring further intensive care	$\frac{1}{16}$	$\frac{1}{5}$
R_6	[28, 39]	the inverse of R_6 represents the duration a patient stays at home before hospitalization	$\frac{1}{7}$	0.9
R_7	[28, 38, 39]	the inverse of R_7 represents the time spent in general hospital care before admission to ICU	$\frac{1}{3.5}$	1
R_8	[27, 40]	the inverse of R_8 represents the time spent in ICU before recovery	$\frac{1}{16}$	$\frac{1}{3}$
R_9		the inverse of R_9 represents the duration for which the asymptomatic cases remained infectious following their latent non-infectious period	$\frac{1}{R_9} = \frac{1}{R_3} + \left(0.5 \times \frac{1}{R_4}\right)$	
R_{10}	Time-dependent [28, 39, 41]	the inverse of R_{10} represents the time spent in ICU before dying	$\frac{1}{10}$	0.9
α	fixed, [42–44]	undocumented asymptomatic fraction	0.4	0.4
β	Assumed	the risk of infection from the registered and quarantined ($I_H + I_R$) patients	0.05	0.25
ρ	Time-dependent	the fraction of documented infections that require hospitalization	0.01	0.9
ϑ	Time-dependent [45–47]	the fraction of hospitalized patients that require further intensive treatment	0.01	0.7
δ	Time-dependent [45–47]	the fraction of ICU patients that have fatal outcome	0.3	0.9
$\bar{\mu}$	this fraction represent the total undocumented infection including the asymptomatic cases, estimated through MLE method of the Bayesian framework			
μ		documented symptomatic fraction	$\mu = \frac{1-\bar{\mu}}{1-\alpha}$	

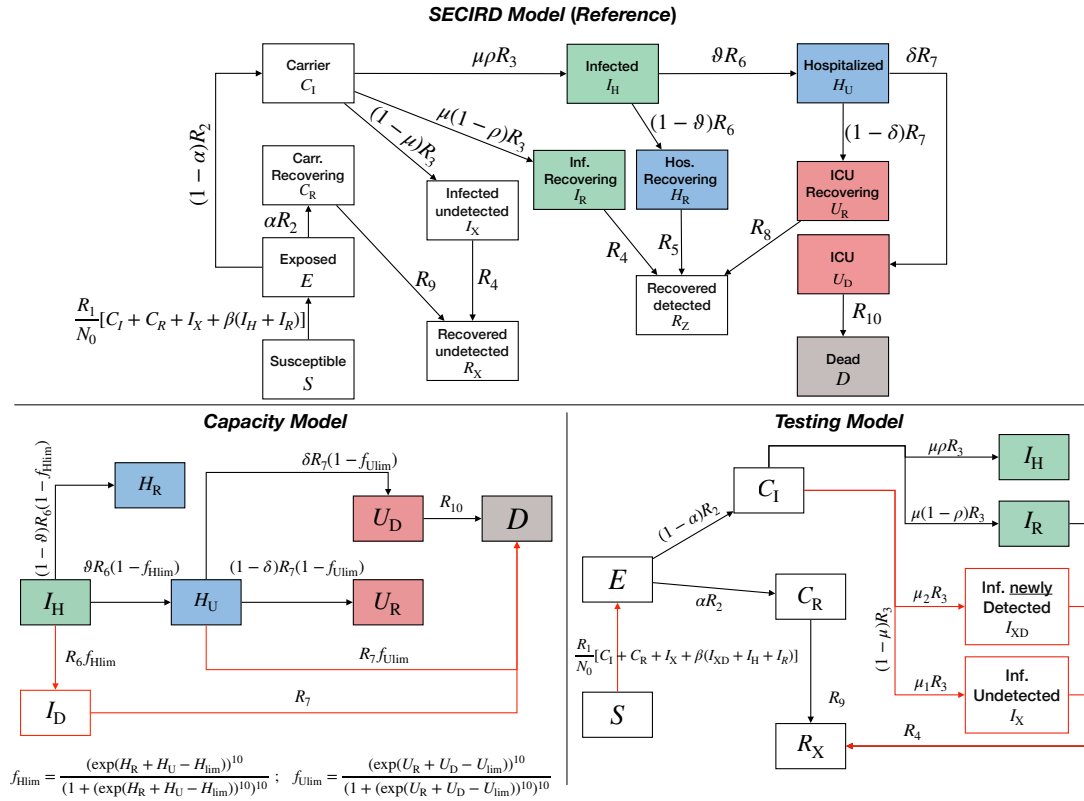


Fig 1: **Model schemes.** The *Reference Model* distinguishes healthy individuals with no immune memory of COVID-19 (susceptible, S), infected individuals without symptoms but not yet infectious (exposed, E), infected individuals without symptoms who are infectious (carrier, $C_{R,I}$, asymptomatic and pre-symptomatic respectively), infected ($I_{X,H,R}$), hospitalized ($H_{U,R}$) and ICU ($U_{D,R}$) patients, dead (D) and recovered ($R_{X,Z}$), who are assumed immune against reinfection. This scheme also applies to the *Asymptomatic Model*. The *Testing Model* is a modified branch of the *Reference Model* used to evaluate the impact of increasing case detection and isolation onto infection dynamics; I_{XD} and I_X describe newly detected and undetected cases, respectively. The *Capacity Model* is a modified branch of the *Reference Model* to investigate the impact of limited hospital and ICU access onto the death toll. f_{Hlim} and f_{Ulim} are steep exponential functions diverting the flux from I_H and H_U to D , respectively, when hospital and ICU occupancy reached their respective current capacities $H_{lim}(t)$ and $U_{lim}(t)$. R_x with $x \in [2, \dots, 9]$ are per day transition rates between different states. behavioral parameters (ρ , ϑ , δ , R_1 and R_{10}) are subject to contingent factors, like NPIs, self-awareness, availability of hospital beds, etc., and, hence, are functions of time.

parameters are identifiable in more than 75% of the cases (see Fig. S6 for a typical results when all parameters are identifiable; and the Supplementary Material for more details). 146
147

Basic reproduction number 148

The basic reproduction number \mathcal{R}_0 is defined as the expected number of secondary infections 149
produced by a single infection in a population where everyone (assuming no immune memory) is 150
susceptible [49] and reflects the transmission potential of a disease. For COVID-19, the dynamics 151
of the pandemic was influenced by several factors, like, the self-awareness in the community, 152

interventions and policies implemented by the authorities and immunisation of the population. Therefore, the time-dependent reproduction number $\mathcal{R}(t)$ that describes the expected number of secondary cases per infected person at a given time of the epidemic, is a more practically useful quantity to understand the impact of interventions, behavioral changes, seasonal effects, etc. on the disease dynamics [20, 30].

In multi-compartmental epidemic models, \mathcal{R}_0 can be derived with the next generation matrix method [50–52], where the Jacobian matrix consists of two factors, rate of appearance of new infections into the infection compartment (\mathcal{F}) and transfer of infected into other compartments (\mathcal{V}). The elements G_{ij} of $G = \mathcal{F}\mathcal{V}^{-1}$ represent the expected number of secondary infections in compartment i caused by a single infected individual of compartment j . The reproduction number \mathcal{R}_0 is given by the dominant eigenvalue of G (the derivation of \mathcal{R}_0 is provided in the Supplementary Material):

$$\mathcal{R}_0 = R_1 \frac{S_0}{N_0} \left[\frac{1-\alpha}{R_3} + \beta\mu\rho \frac{1-\alpha}{R_6} + \frac{\alpha}{R_9} + \beta\mu(1-\rho) \frac{1-\alpha}{R_4} + (1-\mu) \frac{1-\alpha}{R_4} \right], \quad (1)$$

where N_0 is the total population and S_0 is the susceptible population, both at the start of the pandemic (parameters are listed in Table 1). \mathcal{R}_0 was calculated using the parameter set estimated by the initial fit that considers only the first two weeks of data points as described in the *Parameterization* section. An ensemble of parameter sets (as described in the *Perturbation and parameter identifiability* section) was used to calculate the standard deviation in the \mathcal{R}_0 .

In order to understand the impact of awareness in the population, NPIs and policies implemented by the authority upon the development of the time-varying reproduction number ($\mathcal{R}(t)$) [20], we fitted the model parameters to data in shifting time windows of one week. This approach has two advantages: first, the reproduction number $\mathcal{R}(t)$ is determined as a time-dependent variable and thus reflects the impact of NPIs on the infection dynamics; second, the moving-window dampens sudden jumps in the data because of reporting delays. In each time window, a best fit of the model parameters was found based on the cost function value (squared difference between data and simulation). In the next window, the fitting was repeated with initial conditions given by the model state in the previous time window. As described in the *Perturbation and parameter identifiability* section, an ensemble of perturbed parameter sets was used to calculate the standard deviation in the \mathcal{R}_t .

$\mathcal{R}(t)$ in time window k reads [30]:

$$\mathcal{R}(t_k) = R_1(t_k) \frac{S(t_k)}{N(t_k)} \left[\frac{1-\alpha}{R_3} + \beta\mu\rho(t_k) \frac{1-\alpha}{R_6} + \frac{\alpha}{R_9} + \beta\mu(1-\rho(t_k)) \frac{1-\alpha}{R_4} + (1-\mu) \frac{1-\alpha}{R_4} \right], \quad (2)$$

where $\rho(t_k)$ denotes the hospitalized fraction of identified symptomatic cases in the k -th time window. Data analysis of the clinical state of all infected cases (up to June 22nd) by the Istituto Superiore di Sanità (ISS) showed $\sim 30\%$ asymptomatic cases, with increasing tendency [42–44]. In a study performed in Vo' Euganeo, Veneto, the percentage of asymptomatic cases was found to be in the range of 40% [53]. We set the asymptomatic fraction to $\alpha = 0.4$. The fraction of undetected cases $\bar{\mu}$ (see Supplementary text and Table 2) is by definition:

$$\bar{\mu} := \alpha + (1-\mu)(1-\alpha) \implies \mu = \frac{1-\bar{\mu}}{1-\alpha}$$

Asymptomatic Model

In the *Asymptomatic Model*, all symptomatic cases are detected, i.e. $\mu = 1$. We compared the results from this model with those from the *Reference Model* to understand, in an ideal situation, the implication of detecting all symptomatic cases for the pandemic development.

Testing Model

In order to understand the influence of extra testing on infection dynamics, we adopted a model where a fraction of the undetected infected cases (I_X) is detected (I_{XD}) via testing and hence, contained. The newly detected infected (I_{XD}) contribute to new infections with a frequency reduced by a factor β ($\beta < 1$) but the infectious period remains unaltered ($1/R_4$) (*Testing Model* in Fig. 1 and Fig. 3). Li et al. [54] have demonstrated, in the context of COVID-19 transmission in China, that strict control measures (travel restrictions, enhanced testing, self-quarantine, contact precautions, etc.) helped in improving the fraction of all documented infections from 14% to 65%, $\sim 4-5$ fold. For Italy, we estimated that 90% of the infections remained undetected (Table 2). We assumed that enhanced testing reduced this dark figure by daily 2% until reaching 60% (assuming similar efficiency as in China, i.e. documented infections increasing 10% to 40%). We introduced a time-dependent fraction μ' of undetected infections, which, starting from $\bar{\mu}$, was decreased daily by steps of 2% down to 60%. The asymptomatic fraction was fixed as in the *Reference Model* ($\alpha = 0.4$). The undetected portion of symptomatic is instead modified so that the fraction of undetected cases, $\mu_1(t)$, and the fraction of newly detected cases, $\mu_2(t)$, satisfies:

$$\mu_1(t) + \mu_2(t) = 1 - \mu,$$

with

$$\mu_1(t) = \frac{\mu'(t) - \alpha}{1 - \alpha}, \quad \mu_2(t) = \frac{\bar{\mu} - \mu'(t)}{1 - \alpha}.$$

The parameters obtained by fitting the data with the *Reference Model* were transferred into the *Testing Model*. This maintains the compartmental flow of the *Reference Model* and thus ensures that the result reflects the sole effect of isolating a fraction of undetected infections. Correspondingly, $\mathcal{R}(t_k)$ becomes:

$$\begin{aligned} \mathcal{R}(t_k) = R_1(t_k) \frac{S(t_k)}{N(t_k)} & \left[\frac{1 - \alpha}{R_3} + \beta \mu \rho(t_k) \frac{1 - \alpha}{R_6} + \frac{\alpha}{R_9} + \right. \\ & \left. + \beta \mu (1 - \rho(t_k)) \frac{1 - \alpha}{R_4} + \beta \mu_2(t_k) \frac{1 - \alpha}{R_4} + \mu_1(t_k) \frac{1 - \alpha}{R_4} \right]. \end{aligned}$$

Capacity Model

To estimate the impact of capacity limitations of the health care system, we implemented time-varying capacity constraints on the hospital ($H_{\text{lim}}(t)$) and ICU ($U_{\text{lim}}(t)$) accessibility (*Capacity Model* in Fig. 1 and Fig. 3), using available data for the number of hospital and ICU beds in the different regions. Table 3 reports the pre-pandemic capacity and the increased capacity, specifically allocated to COVID-19 patients, together with the date of accomplished installation. Some regions doubled their capacity and, presumably, this extension of infrastructure has been implemented in a step-wise manner. We assumed a linear increase of the hospital ($H_{\text{lim}}(t)$) and ICU ($U_{\text{lim}}(t)$) capacity from three days before exhaustion until reaching the maximum capacity on the date of accomplished installation. This new capacity was available thereafter. The exhaustion date was determined from the data and refers to the day at which the number of hospitalized and ICU patients became larger than the initial capacity. Before the pandemic, 85% of the hospital beds and 50% of the ICU beds were occupied [55]. In the *Capacity Model*, 15% and 50% of the pre-pandemic total capacity (Table 3) was considered as the baseline capacity of hospital and ICU beds, i.e. the starting values of $H_{\text{lim}}(t)$ and $U_{\text{lim}}(t)$, respectively.

Upon reaching the capacity limit, the influx should be stopped until a vacant bed is available. This could be achieved by introducing a Heaviside step function or any other piecewise method, but this type of function introduces discontinuities and makes solving the ODEs computationally

demanding and error-prone. Here, we introduced two functions (f_{Hlim} and f_{Ulim}) that behave like a step function but are continuous in nature. f_{Hlim} and f_{Ulim} return 1 as long as there are free hospital or ICU beds and 0 otherwise. In the *Capacity Model*, we introduced the compartment I_D , to which the flux from I_H is directed when the hospital capacity is reached. Then, in a sharp transition, patient access to the hospital or ICU is reduced by the fractions $f_{Hlim}(t)$ and $f_{Ulim}(t)$, respectively:

$$f_{Hlim} = \frac{(\exp(H_R + H_U - H_{lim}))^{10}}{(1 + (\exp(H_R + H_U - H_{lim}))^{10})^{10}}$$
$$f_{Ulim} = \frac{(\exp(U_R + U_D - U_{lim}))^{10}}{(1 + (\exp(U_R + U_D - U_{lim}))^{10})^{10}}.$$

Both factors increase fatal outcomes of infections when hospital and ICU capacities are reached. We assumed that inaccessibility of hospital or ICU leads to faster and more frequent death. In particular, when the ICU capacity is reached, people in the hospital compartment (H_U) die after $1/R_7$ days which is faster than via the hospital-ICU-dead route ($(1/R_7 + 1/R_{10})$). Similarly, when the hospital capacity is reached, people in the infected compartment (I_H) die after $1/R_6 + 1/R_7$ days, satisfying $1/R_6 < 1/R_6 + 1/R_7 < 1/R_6 + 1/R_7 + 1/R_{10}$ (see *Reference Model* in the Supplementary Material).

The *MaxCap Model* is defined by the same equations as the *Capacity Model*, but the parameters, H_{lim} and U_{lim} were set to the maximum hospital and ICU capacity, respectively, from the beginning of the simulations.

Data and code availability

Italy COVID-19 data of infected cases, hospitalized and ICU patients and death numbers were provided by the *Protezione Civile Italiana* [29]. Demographic and mortality data used to estimate IFR, are available from the *Italian Institute of Statistics (ISTAT)* website [56, 57]. ISTAT collects mortality data from the *Italian National register office for the resident population (ANPR)*. An automated method was implemented, and parameter estimation was carried out in Matlab 2019b [58] with a combination of the *Data2Dynamics* framework [59]. The code is available at <https://github.com/arnabbandyopadhyay/COVID-19-in-Italy>. For the Bayesian estimation of COVID-19 IFR of Italian regions, see Supplementary Material.

Results

Region-wise infection fatality rate (IFR)

To estimate undetected infections amid the COVID-19 pandemic, we analyzed the mortality rate of previous years and the deaths in 2020. Demographic and death data of the Italian regions have been collected from the *Italian Institute of Statistics (ISTAT)*. The observed mortality of 2020 was substantially higher than in previous years in those Italian regions where the pandemic started – e.g. Lombardia, Veneto, Piemonte (Fig. S1). We estimated the total number of infections, including undetected cases, and the associated IFR (defined as the percentage of deaths among all infections, including the undiagnosed infections) for each region with a Bayesian framework by adapting a standard binomial model (see Supplementary Material). Though literature is available on IFR estimates in Italy, the impact of the undetected infections onto the health care facilities and infection dynamics, considering different testing strategies adopted by the regions, were not sufficiently addressed [21, 22].

The regional IFR, the estimated total infections, Infection rate (IR) and the undetected fractions were summarised in Table 2. In the northern regions where the outbreak occurred

Table 2: Estimation of the total number of infections, the Infection Rate (IR), the Infection fatality rate (IFR) through maximum likelihood in a Bayesian framework based on the data provided by ISTAT up to April 15th [56, 57] (Supplementary Material). Age specific IFRs are reported in Fig. S2.

Areas	IFR in % (95% CI)	Estimated total Infections (Undetected %)	IR in % (95% CI)	CFR in %	Detected Infections
Italy	1.58 (1.04 - 1.84)	2627807 (93.73%)	4.37 (3.8 - 6.64)	13.11	165155
Emilia Romagna	1.84 (1.03 - 2.24)	252985 (91.69%)	5.79 (4.84 - 10.22)	13.26	21029
Liguria	2.08 (1.15 - 2.6)	85924 (93.09%)	5.63 (4.57 - 10.01)	13.6	5936
Lombardia	1.66 (1.03 - 1.9)	1390759 (95.53%)	13.83 (12.16 - 22.19)	18.3	62153
Marche	1.88 (0.88 - 2.47)	58555 (90.62%)	3.93 (3.05 - 8.11)	13.56	5503
Piemonte	1.73 (0.78 - 2.12)	258792 (92.94%)	6.1 (5.06 - 13.4)	11.05	18229
Toscana	1.63 (0.69 - 2.36)	62671 (87.77%)	1.43 (0.99 - 3)	7.25	7666
Valle d'Aosta	1.54 (0.73 - 2.34)	9785 (90.19%)	9.74 (6.4 - 17.94)	12.63	958
Veneto	1.3 (0.57 - 1.71)	141466 (89.67%)	2.77 (2.19 - 6.09)	6.43	14624

first – e.g. Emilia Romagna, Piemonte and Veneto – the undetected infections were nearly 10 fold more than the reported cases, and in Lombardia, it was more than 21 fold. We observed substantial heterogeneity of the IFR across different age groups (see Fig. S2). For ages below 60, it was as low as 0.05%. The IFR was significantly higher in the 81+ age group (9.5% to 20%, Fig. S2). Despite Italy having the highest COVID-19 deaths in Europe, the estimated infection rates (IR) were relatively low (highest in Lombardia \sim 13% [12.16 – 22.19%, 95% CI]) across all regions, and hence the population was far from reaching the herd immunity threshold (\sim 70% with formula $1 - \frac{1}{\mathcal{R}_0}$, assuming no previous immune memory and considering the lowest mean of reported \mathcal{R}_0 for Covid-19 is \sim 3) [60–62]. Our estimated total infections (detected + undetected), IR and IFR are close to the Imperial College London report 20 on Italy [22].

During the early outbreak, different northern regions in Italy adopted different testing strategies, which heavily influenced the infection dynamics. Lombardia and Piemonte followed the World Health Organization (WHO) and central health authority recommendations by mainly testing symptomatic cases, while Veneto implemented a more extensive population testing. Lombardia with \sim 10 million inhabitants has suffered around 14,000 deaths by the end of April, which is more than half of all COVID-19 deaths in Italy. In comparison, Veneto, with a population of 5 million, has suffered around 1,400 deaths. This difference is also reflected in the CFR and IR, 6.43% and 2.77% in Veneto, while in Lombardia it was 18.30% and 13.83% (Table 2) despite their geographical proximity.

To understand whether implementing different testing strategies succeeded in keeping the undetected and the overall infection amount under control, we investigated the association between the tests performed by regions with the total number of infections (detected and undetected, Table 2) in the early phase of the pandemic. According to the null hypothesis, the total number of infections would be uncorrelated with the testing volume, as testing only discovers

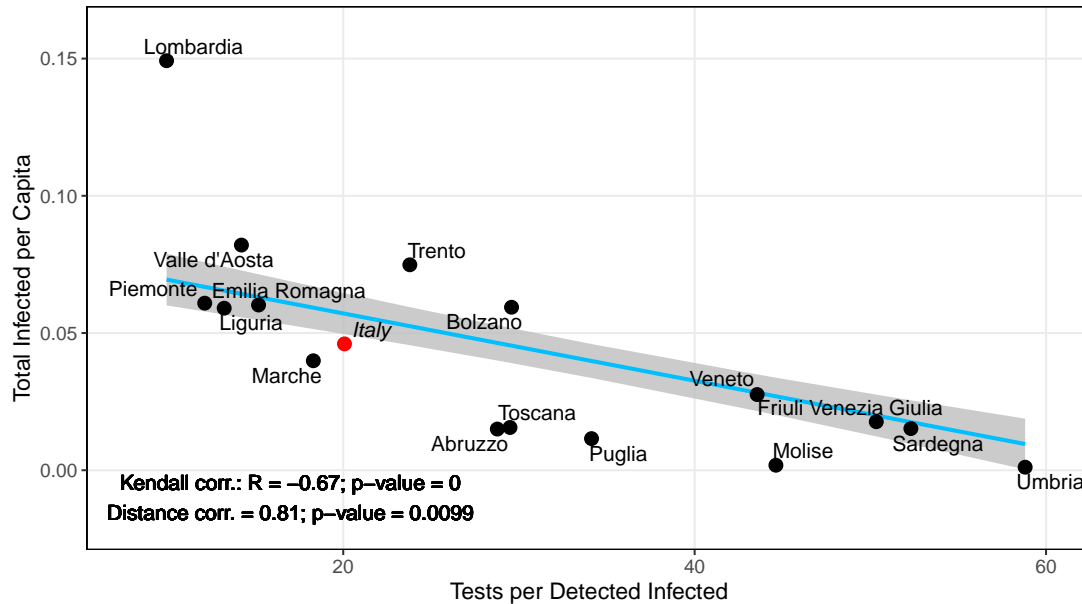


Fig 2: **Impact of tests on the total infections.** Kendall and distance correlation between the number of tests performed per infection and total infections per capita. Significant negative correlation confirms that the infection dynamics can be controlled by aggressive testing, which is further supported by the infection epidemic curve in Fig. 4A. Data are considered up to April 15th. Light blue line: linear regression fit; gray shaded area: standard error; black dots: region-specific values; red dot: nationwide value; R : correlation coefficient; p : significance.

undetected infections and therefore should not impact the total infection. This hypothesis holds when testing does not influence the infection dynamics. We measured the Kendall and distance correlation between total infection per capita and total tests performed (up to April 15th, 2020) per reported infection. This yielded a significant correlation in both tests (Fig. 2). The negative correlation indicates that testing influenced the infection dynamics by isolation of newly detected cases and subsequent interruption of infection chains. The impact of testing is further supported by the observed infection dynamics. Regions with intense testing, like Veneto and Toscana, flattened the infection curve by the middle of April, while for Lombardia, Liguria and Piemonte with inadequate testing, this was delayed by three weeks (first week of May 2020, Fig. 4A).

Influence of undetected cases on \mathcal{R}_t

To understand the influence of undetected cases and installed NPIs on infection dynamics across different regions in Italy, we used the COVID-19-specific *Reference Model* to explain the dynamics of infected, hospitalized, ICUs and death numbers provided by the *Protezione Civile Italiana* [29] (Fig. 4A). As described in the *Parametrization* section, based on the ensemble of parameters estimated by using the first two weeks of data, we calculated the basic reproduction number \mathcal{R}_0 according to equation 1. Estimated behavioral parameters in every window (keeping the physiological parameters constant) were used to calculate the reproduction number \mathcal{R}_t (Fig. 4B) according to equation 2. The sudden increase in reported cases resulted in an overshoot in the \mathcal{R}_t curve at the beginning. Due to the nationwide NPIs, increased public awareness inducing self-isolation and social distancing, the reproduction number continuously decreased, approaching unity at the end of April. In the regions with many undetected infections, like Emilia Romagna, Lombardia and Piemonte, the reproduction number reached unity in the first

week of May, while in Veneto and Toscana it reached unity in the middle of April and was substantially lower by the first week of May. As \mathcal{R}_t functionally depends on many factors (see \mathcal{R}_t formula in the Methods section), we opted for a sensitivity analysis to find the important factors that regulate \mathcal{R}_t . It revealed that \mathcal{R}_t is highly sensitive to the transmission probability R_1 and the dark figure $\bar{\mu}$ (Fig. S9). The influence of installed NPIs, social distancing, awareness etc. are embedded within R_1 and therefore, their impact is reflected in the decreasing trend of \mathcal{R}_t in all regions. The benefits of testing and the impact of undetected cases on the \mathcal{R}_t evolution can as well be inferred by comparison of \mathcal{R}_t in the *Reference* and the *Asymptomatic Model* with less undetected cases ($\bar{\mu} = \alpha$, $\mu = 1$).

In the *Asymptomatic Model*, all symptomatic infections are detected and, hence, this reduces secondary infections ($\beta \ll 1$). Removal of the highly infectious compartment (I_X), causes a lower turnover from susceptible to exposed. This effect is apparent in the initial phase of the pandemic when \mathcal{R}_t in the *Asymptomatic Model* is much lower than in the *Reference Model* (iris-blue and red line, respectively, in Fig. 4B). In the long term, the \mathcal{R}_t curves from the two models converge, despite the fraction of undetected cases being constant throughout the simulations: $\bar{\mu}$ in the *Reference Model* and α in the *Asymptomatic Model*. This is consistent with the effect of the restriction measures, limiting the spreading through undetected cases. The difference in the \mathcal{R}_t curves of these two models is larger in the pre-lockdown period. As soon as people's behavior has started changing either by self-awareness or by imposed restrictions, the turnover from susceptible to exposed is reduced. This caused the according adjustment of R_1 and the merging of \mathcal{R}_t in both models. Thus, the influence of undetected infections on \mathcal{R}_t wanes (Fig. 4B) because of two reasons, first, restricted contacts due to the nationwide lockdown, and second, enhanced testing strategy adopted by the regions.

Increased Test and Isolate (TI) strategy to reduce hospitalizations

As the impact of undetected cases on \mathcal{R}_t faded with time, we wanted to quantify the benefit of an increased test and isolate (TI) strategy by implementing an early (from March 2nd, 2020, i.e. one week before lockdown) and late (from March 15th, 2020) testing strategy. Many countries have implemented a Test, Trace and Isolate (TTI) strategy that has a high detection rate, and several modeling studies indicate that a high proportion of cases would need to isolate to control the pandemic [63, 64]. In our case, an increased test and isolate strategy with a high success rate of detection and isolation (as mentioned in the Methods section) is a phenomenological implementation of a TTI strategy.

In the *Testing Model* we assumed that a fraction ($\mu_2(t)$) of the symptomatic undetected cases, I_X , was detected by tests (I_{XD}), and hence became less infectious ($\beta \ll 1$ Methods, Fig. 1). We maintained the compartmental flow from the *Reference Model* by using the same parameter set in order to determine the impact of isolating undetected infections by targeted testing and home quarantine of contact clusters around identified infections. This *in silico* experiment resulted in a substantial increase in the number of detected infections but reduced the number of required hospitalizations. The early TI scenario resulted in up to $\sim 32\%$ peak reduction of hospital bed occupancy, which reduced death numbers by up to $\sim 44\%$ (Fig. 5A-B) depending on the region. The late TI scenario resulted in a situation similar to reality, namely, an overwhelmed health care system with little decrease in the peak hospital occupancy. However, late TI still reduced death numbers by up to $\sim 24\%$. Although enhanced testing increased the total number of detected infections in comparison to the real number of detected cases, \mathcal{R}_t fell and reached unity three weeks earlier (Fig. S10). In line with previous results [63], this result suggests that TTI-strategies are efficient in decreasing disease propagation. South Korea successfully mounted a targeted testing strategy to contain disease spreading without imposing strict measures, like lockdowns or immigration control [8].

Having established that increased detection and isolation lowers hospitalization rates, we investigated whether the same relation can be inferred from the data directly. We calculated the

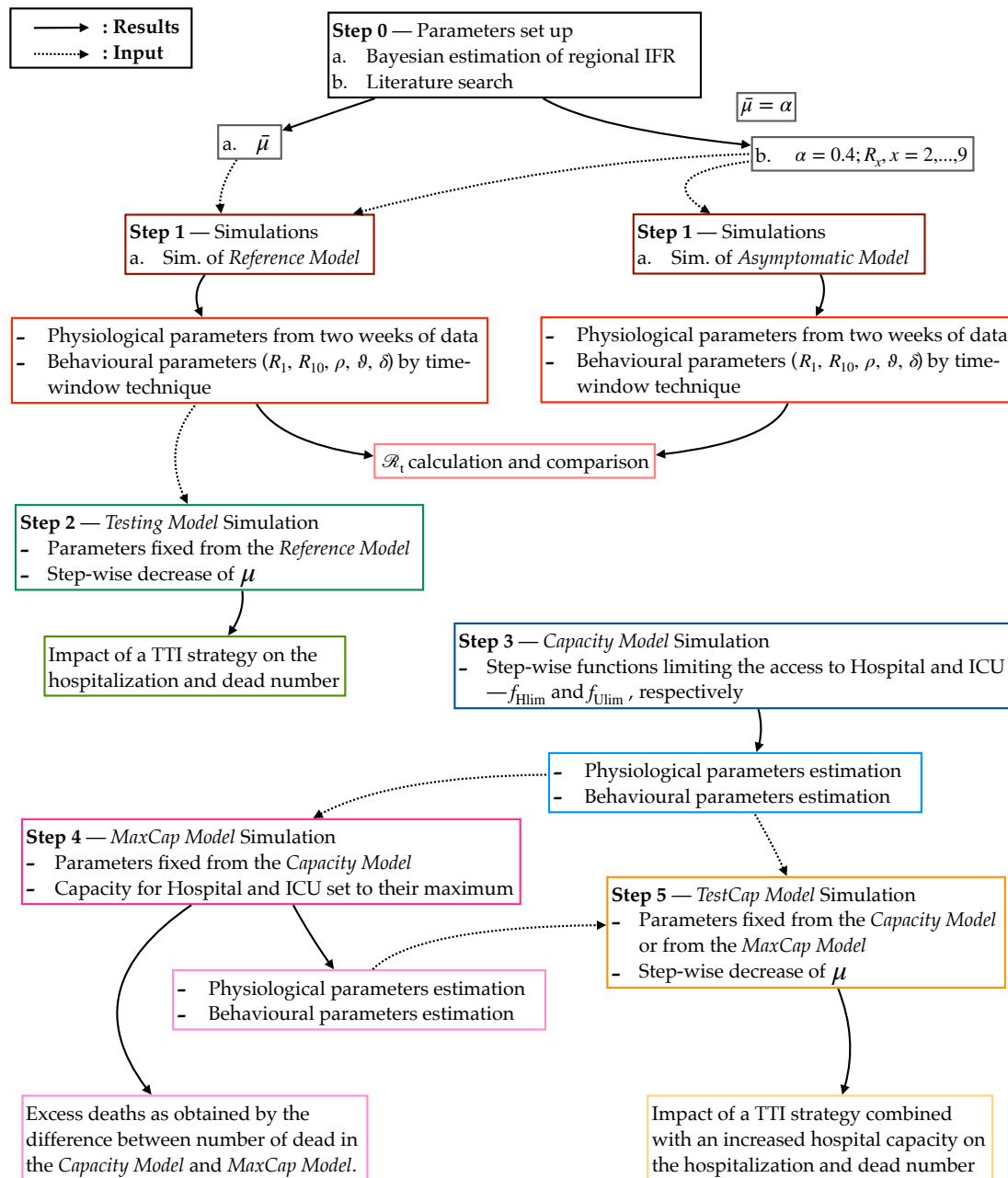


Fig 3: Flowchart of the study design including features and purposes of the SECIRD models.

correlation between the median hospital occupancy and the total number of tests performed per infected up to May 22nd, 2020 (Fig. 5C). Regions with low testing were associated with the health care system hitting its capacity limits, while regions with intense testing kept a functional health care system. The northern regions of Italy faced bottleneck situations in hospitals, which is well reflected by the analysis (Fig. 5C, red color). Especially in Lombardia, where only symptomatic patients were tested, the health care system was overwhelmed. In contrast, Veneto performed ~ 4 times more tests per infected than Lombardia, which reduced the number of infections and

367
 368
 369
 370
 371
 372
 373

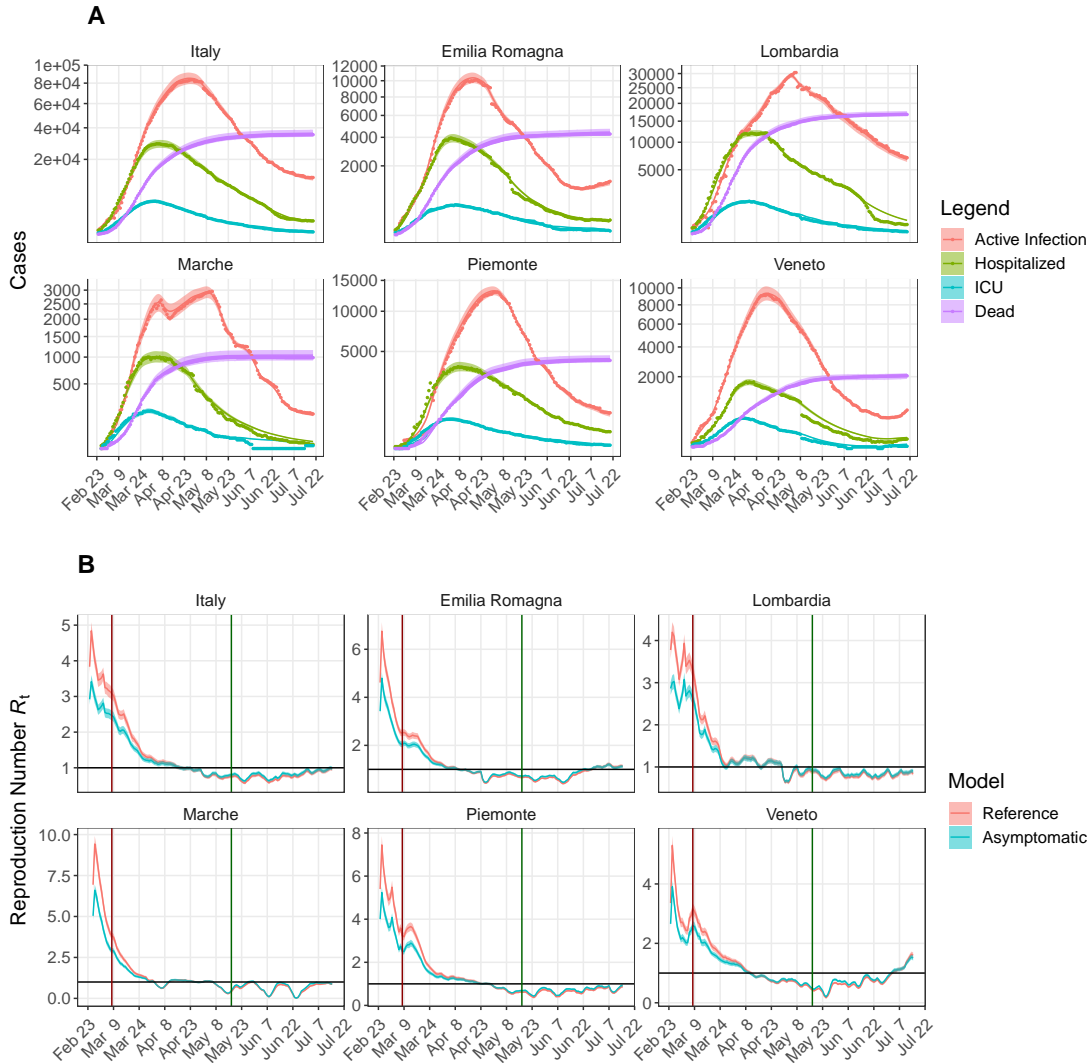


Fig 4: Reference Model and time-dependent reproduction number \mathcal{R}_t in different regions of Italy. (A) Active infections, hospitalized, ICU and death data (nationwide and region-wise) were fitted in a sliding one week time window. Parameter ranges listed in Table 1 were used and the behavioral parameters (R_1 , R_{10} , ρ , ϑ , δ) were estimated in each time window (see Methods); dots: data; continuous lines and shaded area: respectively, mean and standard deviation of all dynamics generated by using 100 perturbed parameter sets (see Methods). (B) Dynamics of the time-dependent reproduction-number, \mathcal{R}_t , resulting from the fit with the Reference (red) and the Asymptomatic Model (blue). Statistics of \mathcal{R}_t were obtained by fitting the data with 100 perturbed parameter sets; continuous lines and shaded area are, respectively, mean and standard deviation. Vertical lines correspond to the Lockdown implementation (dark red) and release (dark green). Black horizontal line represents $\mathcal{R}_t = 1$.

hospitalizations.

In summary, the hospitalization and testing data resolved per region suggest a benefit of intense testing strategies to mitigate the load on the health care system. The *in silico* experiments add evidence that this relationship is induced by the interruption of infection chains, in particular,

374
375
376
377

by the detection of undetected cases. Thus, testing not only improves knowledge on the infection state but also directly impacts the dynamics of the pandemic.

Capacity Model and excess dead due to the shortage of hospital beds

Table 3: Hospital bed and ICU capacity before and in the course of the pandemic [55, 65]. *ICU* and normal *Beds* represent the pre-pandemic total beds. In the simulation we used 50% of ICU and 15% of normal beds as baseline capacity. *Added ICU* and *Added beds* represent increased allocation specifically for COVID-19 patients. *Date ICU* and *Date beds* is the date when the additional beds and ICUs were in place. AP: autonomous province.

Regions	ICU	Beds	Added ICU	Date ICU	Added beds	Date beds
Abruzzo	109	4410	67	31/03/2020	537	23/04/2020
Basilicata	49	1861	24	17/03/2020	139	17/03/2020
Calabria	153	5739	60	11/04/2020	126	11/04/2020
Campania	506	17977	104	11/04/2020	773	14/04/2020
Emilia Romagna	449	17295	259	24/03/2020	2189	24/03/2020
Friuli Venezia Giulia	127	4333	102	02/04/2020	358	08/05/2020
Lazio	557	20817	323	24/04/2020	1527	21/04/2020
Liguria	186	5690	127	07/04/2020	1241	01/04/2020
Lombardia	859	37767	939	03/04/2020	11673	12/04/2020
Marche	115	5183	132	31/03/2020	638	06/04/2020
Molise	31	1225	12	28/03/2020	31	07/04/2020
Piemonte	317	16313	500	08/03/2020	4451	16/04/2020
Puglia	302	12531	297	11/04/2020	1027	26/04/2020
Sardegna	123	5739	40	14/04/2020	92	07/04/2020
Sicilia	392	15821	312	23/04/2020	1632	04/05/2020
Toscana	377	12021	247	06/04/2020	1350	05/04/2020
Umbria	70	3259	35	25/03/2020	131	11/04/2020
Valle d'Aosta	12	481	25	03/04/2020	262	03/04/2020
Veneto	487	17512	331	17/03/2020	1910	17/03/2020
Bolzano (AP)	40	2047	66	16/04/2020	442	03/04/2020
Trento (AP)	32	2113	70	02/04/2020	382	07/04/2020

Besides NPIs and promoting social distancing, self-isolation etc., strengthening the health care system is also an inevitable part of the government response. According to the data published by the Italian Ministry of Health, Italy had 3.18 beds per 1000 people with an average occupancy of 75-90% before the pandemic [55]. Between March 1st and March 11th, 2020, 9-11% of the infected people were admitted to ICU. Out of total ~ 5200 ICU beds (pre-pandemic) in Italy, 2500 were already occupied by March 20th. To cope with this critical situation, each region increased the hospital and ICU facilities (Table 3). Despite the considerable increase in hospital and ICU capacity, the unexpected huge wave of patients and the necessary time to adapt the facilities added to the difficulties of crisis management.

To investigate the impact of the limited health care capacities, we developed the *Capacity* and the *MaxCap Model* (Fig. 1 and Fig. 3). As of May 22nd, all regions had increased the number of available beds, and the epidemic curves were in a downward phase. Therefore, we investigated a possible impact on the pandemic of hospital overload in the previous months, considering data from February 24th to May 22nd.

In the *Capacity Model*, the pre-pandemic occupancy of hospital beds and ICUs was considered 85% and 50% [55], and the baseline number of available hospital and ICU beds was set to 15% and 50% of the total capacity (Table 3), respectively. The capacity that was increased

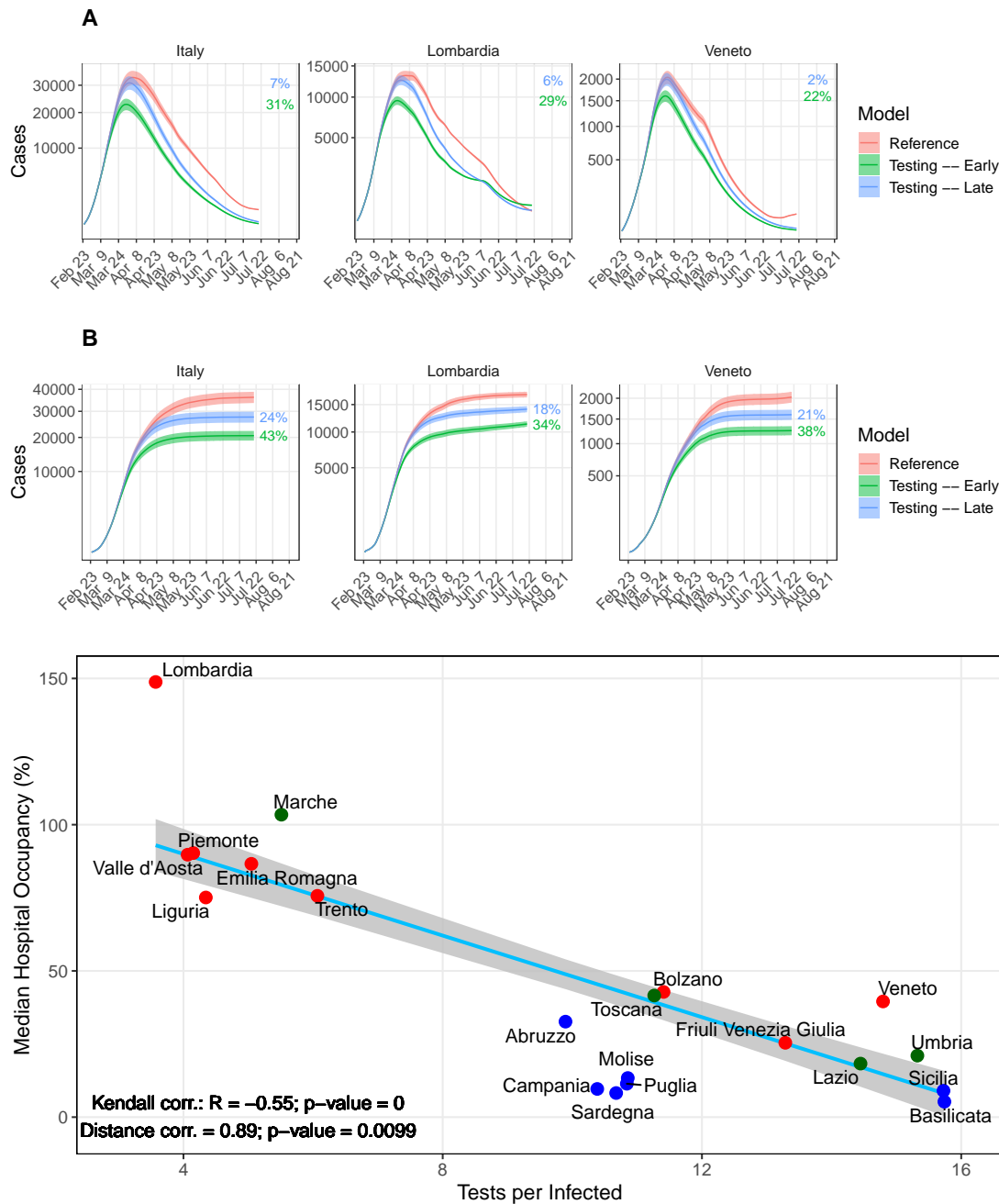


Fig 5: Impact of testing and isolation on hospitalization and death. (A & B) Simulation results of the *Testing Model* in two scenarios: undetected cases are decreased from $\bar{\mu} = 90\%$ to 60% starting one week before the lockdown (green) and one week post lockdown (blue). (A) Sum of hospitalized including ICU patients. (B) Total deaths. The percentages provided in panels A and B quantify the reduction in peak with respect to the fitted *Reference Model* (red line). Statistics were performed by fitting the data with 100 perturbed parameter sets (see Methods). Continuous line and shaded region represent the mean and standard deviation, respectively. (C) Kendall and Distance correlations have been performed between the number of tests per infected and the median hospital occupancy, defined as the median of daily hospitalized over the pre-pandemic hospital plus ICU beds. Light blue line: linear regression fit; gray shaded area: standard error; red dots: northern regions; blue dots: southern regions; green dots: central regions. R : correlation coefficient; p : significance.

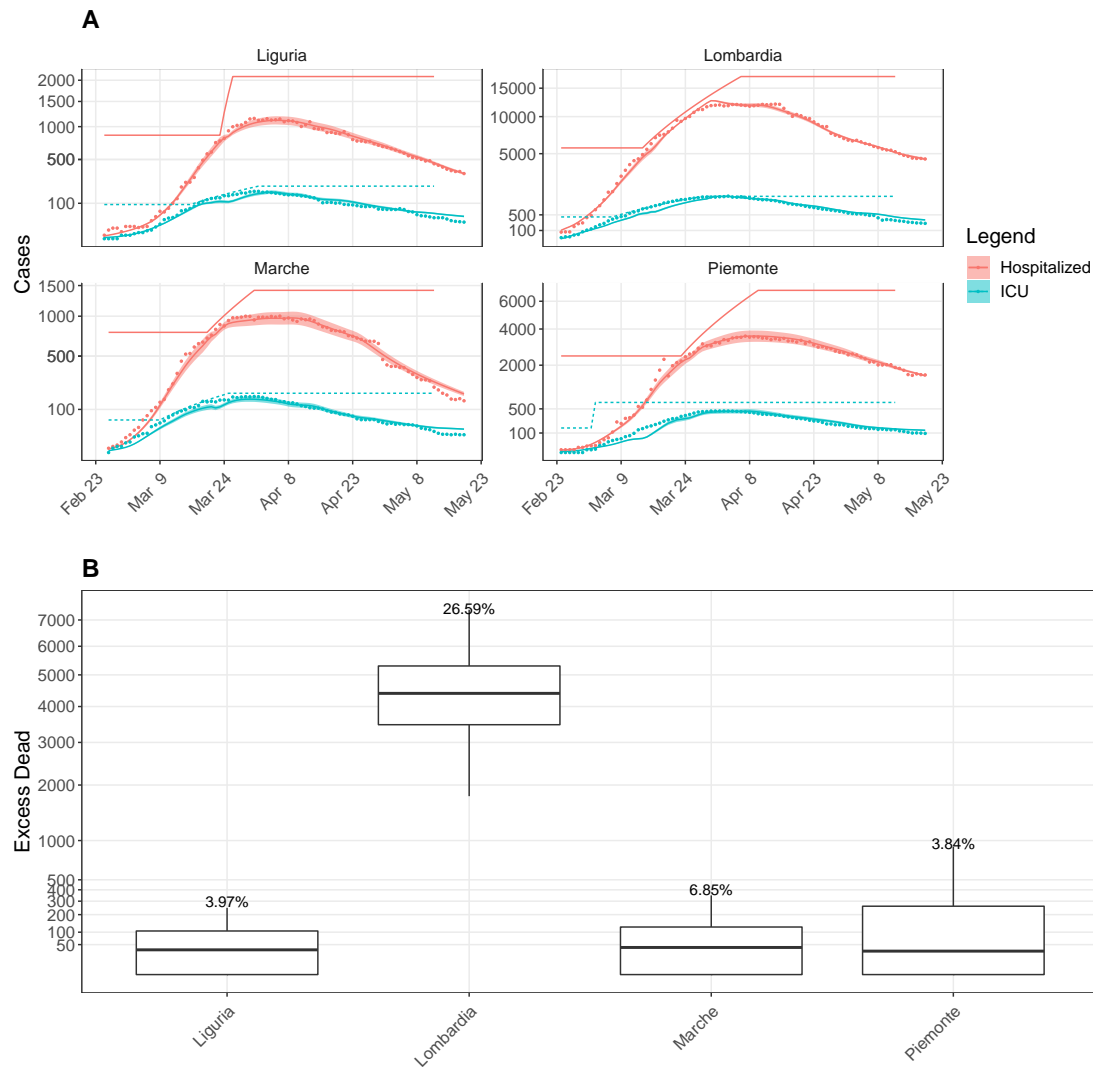


Fig 6: Life costs of the limited health care system. (A) Sample *Capacity Model* fit of hospitalized (red), ICU (iris-blue) data (active infection and death data fitted, but not shown) for the most affected regions. Parameters were fitted as in the *Reference Model* by considering the first 3 months (February 24th-May 22nd, 2020) data. Continuous lines: simulation results; round dots: data; Baseline capacity and linear increase in hospital (red) and ICU (iris-blue) capacity (Table 3) are represented as line with respective color. **(B)** Box plot of the difference in death numbers between the results of the *Capacity* and the *MaxCap Model*. Statistics performed over 100 perturbed parameter sets (see Methods) and the box plot shows the median, 25- and 75-percentiles as well as the minimum and the maximum values. We analysed the variation on the excess dead numbers depending on different values of α for the most affected region, Lombardia (Fig. S13).

during the crises was described by a region-specific linear function with a daily increment so that the capacity reached its target value at the date indicated in Table 3. We assumed that the unavailability of hospital or ICU beds leads to faster and more frequent death (see Methods). Parameters were determined using the same protocol as for the *Reference Model*. *Capacity Model*

398
399
400
401

fit is shown in Fig. 6A and Fig. S11. 402

In the *MaxCap Model*, the hospital and ICU capacities were fixed to their maximum from the very beginning. The compartmental flow in both models was kept identical by using the same parameter set as for the *Capacity Model*. We quantified the impact of the limited capacity on COVID-19-associated deaths by subtracting the death numbers in the *MaxCap Model* from those in the *Capacity Model*. This difference represents the number of people that would have benefited from a system with a substantially higher capacity at the beginning of the epidemic. The effect of limited health care facilities was dramatic in Lombardia with a $\sim 26\%$ difference in the number of deaths, corresponding to ~ 4500 people (Fig. 6B). 403
404
405
406
407
408
409
410

A combined strategy 411

In reality, many regions ramped up facilities to test the immediate contacts of an identified infection, e.g., Veneto [66]) and also strengthen health care facilities to accommodate more patients. Previously we observed the benefits of an early TI strategy that reduces the load upon the health care system, thereby reducing death numbers (*Testing Model*, Fig. 5A,B). We also observed a reduction in fatal outcomes in the case of a functional health care system that is not overwhelmed (*Capacity Model*, Fig. 6A,B). Given these observations, we sought to investigate the combined effects of an improved health care facility with intense testing by considering the following four scenarios: 412
413
414
415
416
417
418
419

1. linear increase of hospital capacity combined with early TI; 420
2. linear increase of hospital capacity combined with late TI; 421
3. maximum hospital capacity from the beginning combined with early TI; 422
4. maximum hospital capacity from the beginning combined with late TI. 423

Thereby, *early/late* was assumed one week before/after the lockdown. 424

To simulate scenarios 1 and 2, we transferred the *Capacity Model* parameters into the *TestCap Model* (Fig. 3) to keep the compartmental flow intact. To simulate scenarios 3 and 4, we evaluated the *TestCap Model* assuming the hospital and ICU capacity at their maximum levels from the beginning. In all scenarios, improved TI was simulated as step-wise reduction of undetected cases by 2% per day ($\mu'(t)$, *Testing Model* in Methods), which is equivalent to ~ 10 -fold increased detection. 425
426
427
428
429
430

Fig. 7 reveals several interesting facets. The importance of testing in a realistic situation where the step-wise extension of the health care facility has been installed is depicted in Fig. 7A. It reveals that an early TI strategy brings down hospitalizations close to the pre-pandemic hospital capacity (horizontal black line). An exception is Lombardia, where adopting an early TI strategy led to $\sim 10\%$ reduction of the hospitalization peak, while the late TI strategy did not decrease the peak size and led to a situation similar to what happened in reality. Though the peak size remained unchanged in Lombardia in the late TI scenario, simulations showed a reduction in the number of deaths of $\sim 17\%$ (Fig. 7A), reaching $\sim 40\%$ (Fig. 7B) when combined with an increased hospital capacity. However, adopting an early TI strategy is effective in reducing the death toll across all regions, ranging from $\sim 34\%$ to $\sim 52\%$. 431
432
433
434
435
436
437
438
439
440

Fig. 7B represents the importance of a TI strategy in the settings of a functional health care system. Previously, we estimated a 26% reduction in death numbers in Lombardia by strengthening the hospital infrastructure (Fig. 6B). Improved hospital capacity with early TI further reduced death numbers by a significant amount, which ranged from $\sim 35\%$ to 52% across different regions, $\sim 52\%$ in Lombardia (Fig. 7B). Early TI with ~ 5 fold more testing would have reduced the death toll up to $\sim 37\%$ in Lombardia (Fig. S12). In the late TI scenario, it would have decreased $\sim 40\%$ in Lombardia (Fig. 7B), and considering only ~ 5 times more testing it would have decreased deaths by $\sim 31\%$ (Fig. S12). 441
442
443
444
445
446
447
448

In summary, this *in silico* experiment emphasizes the importance of an early TI strategy that could partially compensate for limited health care facilities at the early period (March to May, 2020) of the pandemic. However, such an early TI strategy would not be sufficient to contain the hospitalizations within the pre-pandemic hospital limit (horizontal black line, Fig. 7). Therefore extending the hospital infrastructure was mandatory to prevent the overwhelmed health care system.

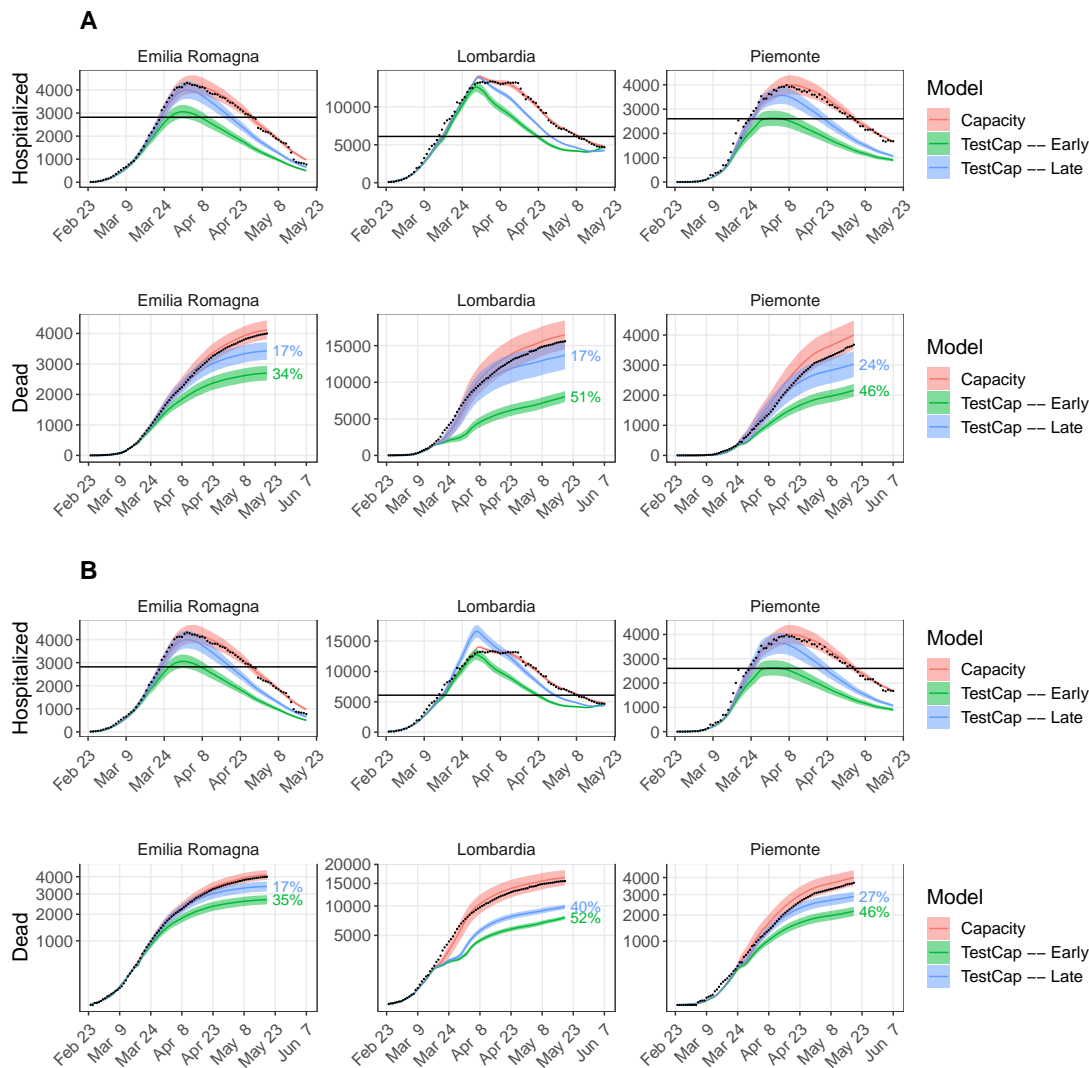


Fig 7: A strategy of early TI and extending hospital capacity combined. Simulation results of the *TestCap Model*. **(A)** Linear increase of hospital and ICU capacities (scenarios 1 and 2) and **(B)** maximum capacities from the beginning (scenarios 3 and 4) with early (green) or late testing. Statistics were performed by fitting the data with 100 perturbed parameter sets (see Methods). Line and the shaded region represent the mean and standard deviation, respectively. Hospitalized population is the sum of hospital and ICU patients. The percentage indicates the mean reduction in hospitalized peak and death number with respect to the mean of the *Capacity Model*. Black dots: data; black horizontal line: capacity (hospital + ICU) before the pandemic.

Discussion

Testing interrupt transmission chains and directly influence infection dynamics

Our retrospective study revealed many lessons that can be learned from the COVID-19 situation in Italy. Though containment measures are necessary to reduce the exponential growth of the pandemic and flatten the infection curve as early as possible, prolonged lockdown (mass quarantine) is not a sustainable solution to the pandemic given its socio-economic burden [67]. The power of lockdown lies in restricting the contacts, and reducing the spread mainly from the asymptomatic and pre-symptomatic carriers. This particularly applies to COVID-19 because a substantial part of secondary infections occurs prior to disease onset [31]. Several studies indicate that the silent transmission from pre- and asymptomatic patients was responsible for the majority of new infections [54, 68, 69]. Although a recent study has found that there is a lower risk of transmission from asymptomatic people [70, 71], asymptomatic cases still present a significant public-health risk, as they are usually unaware of their infection and do not take any increased self-isolation measures. In Fig. 2 we showed that testing not only reduces the dark figure but also interrupts subsequent transmission chains from undetected cases and thereby directly influences the infection dynamics. This emphasizes the importance of a massive testing strategy to control the pandemic.

Regional health care facilities were less overwhelmed with more testing

With the help of a mathematical analysis of the different regions of Italy, we have provided evidence for a general relation between intense testing and reduced burden on the health care system. To interrupt virus transmission chains, the Veneto Region developed a comprehensive public health strategy focusing on case finding, contact tracing and quarantining close and occasional case contacts [72]. Also, testing was extended to all, symptomatic and non-symptomatic case contacts. Toscana followed a very similar strategy as Veneto, whereas Lombardia was testing only the symptomatic cases. Lombardia has twice the population of Veneto (10M vs 5M). Tests performed per capita in Veneto were almost twice as high than in Lombardia [73]. The epidemiological outcomes of the testing strategy adopted by Veneto and Lombardia are very different in terms of incidence number, evolution of the pandemic and the bottleneck situation of the health care system. Veneto and Toscana managed to flatten the infection curve one month earlier than Lombardia and Piemonte. In Fig. 2, Lombardia, Emilia, and Piemonte are placed in the low test, high infection regime whereas Veneto is in the high test and low infection regime. Therefore the pandemic situation of different Italian regions must be addressed in the light of their testing strategy. Different testing strategies and their implications for the reproduction number have been studied [68, 74]. Several other studies emphasize the combination of contact tracing with testing and its implication on the incidence number [63, 75]. Our results suggest, that the bottleneck in the health care system of northern Italy regions was a consequence of their TTI strategy. In particular, testing of symptomatic individuals alone appears inefficient.

Early TTI could mitigate but not avoid the overload of the health care in Italy

In the middle of the crisis, many health care workers were infected with COVID-19 while treating COVID-19 patients, and the voluntary participation of interns and retired personnel was required. Moreover, delays in the testing of health care personnel led to the spread of infection through health care workers. The shortage of health care workers together with limited hospital beds led to a bottleneck situation in the health care system. A study revealed that a weekly screening of the health care workers and other high-risk groups irrespective of their symptoms would reduce transmission by 23% [74]. We quantified the impact of the overwhelmed health care system on the death toll and studied how such a bottleneck situation could be avoided. We showed that a substantial portion of the death toll, $\sim 35\%$ in Lombardia, could be prevented by testing and this could have mitigated the shortage of health care facilities at the early stage of the pandemic, though it would not have contained the hospitalization within its pre-pandemic limit in all cases. Hence, given the capacities, the bottleneck of health care facilities could not be

completely avoided by adopting massive testing alone. 505

An early TTI strategy can replace mass testing strategies 506

A ~ 10 fold increased testing demands huge testing facilities and is not an economic strategy. 507
Moreover, successful detection depends on the subjects getting tested and their previous travel 508
and contact history. Alternatively, tracking and targeted testing with home quarantine of 509
possible cases significantly reduce infection transmission and could be adopted instead of rapid 510
mass testing due to the higher chance of successful detection. However, manual contact tracing 511
is infeasible at higher incidences and contact tracing apps require ethical clearance in accessing 512
the location data, transparency and protection of personal data [68]. In this context, it has to 513
be emphasized that, in the framework of our mathematical model, the impact of tests on the 514
spreading of infections is based on the isolation of positively tested individuals regardless of their 515
symptoms, which is in line with the previous observations [63, 69]. This implies that contact 516
tracing and quarantine without testing would have a similar effect and might be an efficient 517
strategy when sufficient test capacities are not available. Thus, an effective contact tracing and 518
quarantine mechanism monitored through modern technologies, together with improved health 519
care facilities could reduce mortality in the possible future waves or other pandemics. 520

Limitations 521

Our modelling study has several limitations. During the first wave in Italy, there was a high 522
degree of uncertainty regarding the fraction of pre-symptomatic and asymptomatic cases and 523
their associated transmission. These fractions were also subject to the regional testing strategy, 524
and their dynamic nature is observed in the weekly reports published by ISS. In our analysis, we 525
set the asymptomatic fraction, α , to the national average, 0.4. In our simulation, we considered 526
a fixed incubation period. We performed a sensitivity analysis of R_3 upon the \mathcal{R}_t within the 527
range provided in Table 1, and we found that \mathcal{R}_t is less sensitive towards the variations of R_3 . 528

As mentioned in the *Parameterization* section, we determined the range of parameter values 529
that constrained the fit of the physiological parameters by the information available in the 530
literature on the virus characteristics. Some of the physiological parameters in the model may be 531
internally linked. For example, hospitalization and ICU cases increase with infection cases. Here, 532
we assumed that the nature of the virus did not change significantly during the investigation 533
period, and, therefore, we kept the physiological parameters, and hence the internal relations, 534
constant throughout the investigation period. The behavioral adjustments (through NPIs and 535
awareness) caused the breakdown of such relationships and shaped the pandemic. As the 536
behavioral parameters reflect the public behavior which evolved with time, they depend upon 537
several factors and are region-specific. Therefore, it is difficult to infer a proper distribution of 538
such parameters. Nevertheless, as more precise parameter distribution would become available, 539
sampling from a different distribution might improve the quality of the model. 540

For the present analysis, we did not use an age-stratified version of the *Reference* model due 541
to the lack of knowledge of age-stratified model parameters and incomplete age-stratified data 542
during the first wave. However, the age-dependence is phenomenologically included in the model 543
by using a time-dependent hospitalization rate, which reflects the demography of the infected 544
people and other contingent factors that might alter the outcome of the pandemic. We also 545
did not include co-morbidities or pre-existing medical conditions of a sub-population and did 546
not explicitly consider the potential changes in viral transmissibility due to the environmental 547
factors, such as temperature and humidity. Further, cross-regional movements and the potential 548
for imported or exported infections, which might hamper the testing strategy based on contact 549
tracing, were not considered. Lastly, a delay in testing results might hamper outcomes in a 550
contact tracing-based testing strategy [76]. In our simulation, we did not explicitly consider 551
delays in isolation and its impact on the daily cases. Instead of addressing above limitations 552
explicitly, we perturbed our behavioral parameter sets up to 10% of its base value to ensure the 553
robustness of our results in a plausible range of parameter values. 554

Conclusions

555

During the first wave of COVID-19 hospital and intensive care unit beds got overwhelmed in Italy. There are potentially many factors, such as infections from undetected index cases, early vs late testing strategies, limited health care facilities, etc., that might have aggravated the COVID-19 situation in Italy. In this paper, we developed a COVID-19 specific infection epidemic model to address the bottleneck situation of the health care system that most of the northern regions of Italy, particularly Lombardia have faced during the first wave of the pandemic. As the testing was limited at the beginning of the pandemic, a large portion of cases remained undetected, which was a major driver of new infections. We first estimated the dark figure for different regions of Italy through a Bayesian Markov Chain Monte Carlo (MCMC) framework. With an adaptive methodology, we estimated the model parameters by fitting the active cases, hospitalized, ICU, and death data published by the Civil Protection Department, Italy. We showed that testing directly influences the infection dynamics by interrupting transmission from undetected cases. We showed that intense testing is associated with the reduced burden of the health care facility and in reality, regional hospitals were less overwhelmed with more testing. By considering regional pre- and post-pandemic hospital and ICU beds we quantify the impact of the overwhelmed health care system upon the death amount. The impact was highest in Lombardia, which affected ~ 4000 people. Implementing an early TTI strategy in Lombardia would have decreased overall hospital occupancy that would have reduced the death toll by $\sim 45\%$. However, such a strategy would not have kept the hospitalization amount within the pre-pandemic hospital limit. In this context, it is important to keep in mind that the effectiveness of such strategy lies in the isolation of positively tested individuals regardless of their symptoms. Therefore contact tracing and quarantine without testing would have a similar effect and might be an efficient strategy when sufficient test capacities are not available.

556
557
558
559
560
561
562
563
564
565
566
567
568
569
570
571
572
573
574
575
576
577
578

Declarations

579

Acknowledgements

580

Our sincere thank to Dr. Luciano D'Alfonso, Senatore della Repubblica Italiana, Dr. Angelo Borrelli, capo del Dipartimento della Protezione Civile Italiana e commissario per l'emergenza Covid-19, Dr.ssa Eliana Mazzaro, Dip. della Protezione Civile Italiana, Dott. Stefano Marro, Prevenzione Sanitaria presso Ministero della Salute, for responding to our requests in time and for sharing data of hospital and ICU capacities. We thank Rebecca Ludwig for thoughtful discussion and comments on the manuscript.

581
582
583
584
585
586

Consent for Publication

587

Not applicable.

588

Funding

589

This project has received funding from the European Union's Horizon 2020 research and innovation programme under grant agreement No 101003480 and the Initiative and Networking Fund of the Helmholtz Association. It was supported by German Federal Ministry of Education and Research for the project CoViDec (FKZ: 01KI20102). The funding bodies had no role in the design of the study, collection, analysis, and interpretation of the results, or writing the manuscript.

590
591
592
593
594
595

Availability of the code

596

The code is available at <https://github.com/arnabbandyopadhyay/COVID-19-in-Italy>.

597

Author's contributions

598

AB and MS acquired and pre-processed the data, coded the simulation, automated the analysis of the data, analyzed simulation results and led the work. TM and MMH developed the reference SECIRD model. AB, MS and TM designed the capacity model and protocols for parameter estimation of SECIRD models. AB and MS developed other versions of the SECIRD model. TM derived the literature based parameter sets. TM and SK provided insights through discussion. AB wrote the paper. AB, MMH, MS and SB revised the paper. MMH supervised the study.

599

600

601

602

603

604

Competing interests

605

The authors declare that they have no competing interests.

606

Ethics Approval and Consent to Participate.

607

Not applicable.

608

References

609

1. worldometers-Coronavirus (2020). <https://www.worldometers.info/coronavirus/>
2. Hollingsworth, T.D., Klinkenberg, D., Heesterbeek, H., Anderson, R.M.: Mitigation strategies for pandemic influenza A: balancing conflicting policy objectives. *PLoS Comput Biol* **7**(2), 1001076 (2011). doi:10.1371/journal.pcbi.1001076
3. Yang, P., Qi, J., Zhang, S., Bi, g., Wang, X., Yang, Y., Sheng, B., Mao, X.: The effect of multiple interventions to balance healthcare demand for controlling COVID-19 outbreaks: a modelling study. medRxiv, 2020–051920107326 (2020). doi:10.1101/2020.05.19.20107326
4. Dehning, J., Zierenberg, J., Spitzner, F.P., Wibral, M., Neto, J.P., Wilczek, M., Priese-mann, V.: Inferring change points in the spread of COVID-19 reveals the effectiveness of interventions. *Science* **369** (2020). doi:10.1126/science.abb9789
5. Flaxman, S., Mishra, S., Gandy, A., Unwin, H.J.T., Mellan, T.A., Coupland, H., Whittaker, C., Zhu, H., Berah, T., Eaton, J.W., *et al.*: Estimating the effects of non-pharmaceutical interventions on COVID-19 in Europe. *Nature* **584**, 1–5 (2020). doi:10.1038/s41586-020-2405-7
6. Dorn, F., Khailaie, S., Stoeckli, M., Binder, S.C., Lange, B., Lautenbacher, S., Peichl, A., Vanella, P., Wollmershaeuser, T., Fuest, C., Meyer-Hermann, M.: The Common Interests of Health Protection and the Economy: Evidence from Scenario Calculations of COVID-19 Containment Policies. medRxiv (2020). doi:10.1101/2020.08.14.20175224. <https://www.medrxiv.org/content/early/2020/08/15/2020.08.14.20175224.full.pdf>
7. Anderson, R.M., Heesterbeek, H., Klinkenberg, D., Hollingsworth, T.D.: How will country-based mitigation measures influence the course of the COVID-19 epidemic? *Lancet* **395**(10228), 931–934 (2020). doi:10.1016/S0140-6736(20)30567-5
8. Park, S., Choi, G.J., Ko, H.: Information Technology-Based Tracing Strategy in Response to COVID-19 in South Korea-Privacy Controversies. *JAMA* **323**(21), 2129–2130 (2020). doi:10.1001/jama.2020.6602. https://jamanetwork.com/journals/jama/articlepdf/2765252/jama_park_2020_vp_200081.pdf

610

611

612

613

614

615

616

617

618

619

620

621

622

623

624

625

626

627

628

629

630

631

632

633

634

635

636

9. Normile, D.: Japan ends its COVID-19 state of emergency. <https://www.sciencemag.org/news/2020/05/japan-ends-its-covid-19-state-emergency> (2020). doi:10.1126/science.abd0092 637-638-639
10. Covid-19 Italy Situation Report. (2020). <https://covid19.intelworks.io/> 640
11. Remuzzi, A., Remuzzi, G.: COVID-19 and Italy: what next? *Lancet* **395**(10231), 1225–1228 (2020). doi:10.1016/S0140-6736(20)30627-9 641-642
12. Organisation for Economic Co-operation and Development (OECD). <https://www.oecd.org/> (2020) 643-644
13. Iacovou, M., Skew, A.: More than 10% of households in Romania, Latvia and Bulgaria were three-generation in 2008. *Statistics in focus* **52**, 2011 (2011) 645-646
14. Analysis JHUM. <https://coronavirus.jhu.edu/data/mortality> (2020) 647
15. Bommer, C., Vollmer, S.: Estimates of the severity of coronavirus disease 2019: a model-based analysis. University of Goettingen (2020). <https://www.uni-goettingen.de/de/document/download/0af0dcfa623053908de337e1045cf612.pdf/COVID-19%20update.pdf> 648-649-650-651
16. Kermack, W.O., McKendrick, A.G.: A contribution to the mathematical theory of epidemics. *Proceedings of the royal society of london. Series A, Containing papers of a mathematical and physical character* **115**(772), 700–721 (1927) 652-653-654
17. Lin, Q., Zhao, S., Gao, D., Lou, Y., Yang, S., Musa, S.S., Wang, M.H., Cai, Y., Wang, W., Yang, L., *et al.*: A conceptual model for the coronavirus disease 2019 (covid-19) outbreak in wuhan, china with individual reaction and governmental action. *International journal of infectious diseases* **93**, 211–216 (2020) 655-656-657-658
18. Anastassopoulou, C., Russo, L., Tsakris, A., Siettos, C.: Data-based analysis, modelling and forecasting of the covid-19 outbreak. *PloS one* **15**(3), 0230405 (2020) 659-660
19. Gatto, M., Bertuzzo, E., Mari, L., Miccoli, S., Carraro, L., Casagrandi, R., Rinaldo, A.: Spread and dynamics of the covid-19 epidemic in italy: Effects of emergency containment measures. *Proceedings of the National Academy of Sciences* **117**(19), 10484–10491 (2020). doi:10.1073/pnas.2004978117. <https://www.pnas.org/content/117/19/10484.full.pdf> 661-662-663-664
20. Cori, A., Ferguson, N.M., Fraser, C., Cauchemez, S.: A new framework and software to estimate time-varying reproduction numbers during epidemics. *Am J Epidemiol* **178**(9), 1505–12 (2013). doi:10.1093/aje/kwt133 665-666-667
21. Modi, C., Böhm, V., Ferraro, S., Stein, G., Seljak, U.: Estimating covid-19 mortality in italy early in the covid-19 pandemic. *Nature communications* **12**(1), 1–9 (2021) 668-669
22. Vollmer, M., Mishra, S., Juliette, H., *et al.*: Report 20: Using mobility to estimate the transmission intensity of COVID-19 in Italy: a subnational analysis with future scenarios. *Imperial College London*. Imperial College London (2020) 670-671-672
23. Giordano, G., Blanchini, F., Bruno, R., Colaneri, P., Di Filippo, A., Di Matteo, A., Colaneri, M.: Modelling the covid-19 epidemic and implementation of population-wide interventions in italy. *Nature medicine* **26**(6), 855–860 (2020) 673-674-675
24. forecasting team, I.C.-.: Modeling covid-19 scenarios for the united states. *Nature medicine* (2020) 676-677

25. Davies, N.G., Kucharski, A.J., Eggo, R.M., Gimma, A., Edmunds, W.J., Jombart, T., O'Reilly, K., Endo, A., Hellewell, J., Nightingale, E.S., *et al.*: Effects of non-pharmaceutical interventions on covid-19 cases, deaths, and demand for hospital services in the uk: a modelling study. *The Lancet Public Health* **5**(7), 375–385 (2020) 678
679
680
681
26. Kucharski, A.J., Russell, T.W., Diamond, C., Liu, Y., Edmunds, J., Funk, S., Eggo, R.M., Sun, F., Jit, M., Munday, J.D., *et al.*: Early dynamics of transmission and control of covid-19: a mathematical modelling study. *The lancet infectious diseases* **20**(5), 553–558 (2020) 682
683
684
685
27. RKI Steckbrief. https://www.rki.de/DE/Content/InfAZ/N/Neuartiges_Coronavirus/Steckbrief.html (2020) 686
687
28. L'epidemiologia per la sanità pubblica, I.S.d.S. Characteristics of SARS-CoV-2 patients dying in Italy Report based on available data on June 4th, 2020. https://www.epicentro.iss.it/en/coronavirus/bollettino/Report-COVID-2019_4_june_2020.pdf (2020) 688
689
690
29. COVID-19 Italia - Monitoraggio situazione. <https://github.com/pcm-dpc/COVID-19> (2020) 691
692
30. Khailaie, S., Mitra, T., Bandyopadhyay, A., Schips, M., Mascheroni, P., Vanella, P., Lange, B., Binder, S.C., Meyer-Hermann, M.: Development of the reproduction number from coronavirus sars-cov-2 case data in germany and implications for political measures. *BMC medicine* **19**(1), 1–16 (2021) 693
694
695
696
31. Nishiura, H., Linton, N.M., Akhmetzhanov, A.R.: Serial interval of novel coronavirus (COVID-19) infections. *Int J Infect Dis* **93**, 284–286 (2020). doi:10.1016/j.ijid.2020.02.060 697
698
32. Li, Q., Guan, X., Wu, P., Wang, X., Zhou, L., Tong, Y., Ren, R., Leung, K.S.M., Lau, E.H.Y., Wong, J.Y., Xing, X., Xiang, N., Wu, Y., Li, C., Chen, Q., Li, D., Liu, T., Zhao, J., Liu, M., Tu, W., Chen, C., Jin, L., Yang, R., Wang, Q., Zhou, S., Wang, R., Liu, H., Luo, Y., Liu, Y., Shao, G., Li, H., Tao, Z., Yang, Y., Deng, Z., Liu, B., Ma, Z., Zhang, Y., Shi, G., Lam, T.T.Y., Wu, J.T., Gao, G.F., Cowling, B.J., Yang, B., Leung, G.M., Feng, Z.: Early Transmission Dynamics in Wuhan, China, of Novel Coronavirus-Infected Pneumonia. *N Engl J Med* **382**(13), 1199–1207 (2020). doi:10.1056/NEJMoa2001316 699
700
701
702
703
704
705
33. Wang, D., Hu, B., Hu, C., Zhu, F., Liu, X., Zhang, J., Wang, B., Xiang, H., Cheng, Z., Xiong, Y., *et al.*: Clinical characteristics of 138 hospitalized patients with 2019 novel coronavirus–infected pneumonia in wuhan, china. *Jama* **323**(11), 1061–1069 (2020) 706
707
708
34. Zhao, S., Gao, D., Zhuang, Z., Chong, M.K.C., Cai, Y., Ran, J., Cao, P., Wang, K., Lou, Y., Wang, W., Yang, L., He, D., Wang, M.H.: Estimating the serial interval of the novel coronavirus disease (covid-19): A statistical analysis using the public data in hong kong from january 16 to february 15, 2020. *Frontiers in Physics* **8**, 347 (2020). doi:10.3389/fphy.2020.00347 709
710
711
712
713
35. Clifford, S., Quilty, B.J., Russell, T.W., Liu, Y., Chan, Y.-W.D., Pearson, C.A.B., Eggo, R.M., Endo, A., working group, C.C.-., Flasche, S., Edmunds, W.J.: Strategies to reduce the risk of sars-cov-2 re-introduction from international travellers. *medRxiv* (2020). doi:10.1101/2020.07.24.20161281. <https://www.medrxiv.org/content/early/2020/07/25/2020.07.24.20161281.full.pdf> 714
715
716
717
718
36. Woelfel, R., Corman, V.M., Guggemos, W., Seilmaier, M., Zange, S., Mueller, M.A., Niemeyer, D., Vollmar, P., Rothe, C., Hoelscher, M., *et al.*: Clinical presentation and virological assessment of hospitalized cases of coronavirus disease 2019 in a travel-associated transmission cluster. *MedRxiv* (2020) 719
720
721
722

37. Bullard, J., Dust, K., Funk, D., Strong, J.E., Alexander, D., Garnett, L., Boodman, C., Bello, A., Hedley, A., Schiffman, Z., *et al.*: Predicting infectious severe acute respiratory syndrome coronavirus 2 from diagnostic samples. *Clinical Infectious Diseases* **71**(10), 2663–2666 (2020) 723
724
725
726
38. ISARIC: International Severe Acute Respiratory and Emerging Infections Consortium COVID-19 Report: 13 July 2020 (2020). https://media.tghn.org/medialibrary/2020/07/ISARIC_Data_Platform_COVID-19_Report_13JUL20.pdf Accessed 2020-11-09 727
728
729
39. Dreher, M., Kersten, A., Bickenbach, J., Balfanz, P., Hartmann, B., Cornelissen, C., Daher, A., Stöhr, R., Kleines, M., Lemmen, S.W., *et al.*: The characteristics of 50 hospitalized covid-19 patients with and without ards. *Deutsches Ärzteblatt International* **117**(10), 271 (2020) 730
731
732
733
40. Rees, E.M., Nightingale, E.S., Jafari, Y., Waterlow, N.R., Clifford, S., Pearson, C.A., Jombart, T., Procter, S.R., Knight, G.M., Group, C.W., *et al.*: Covid-19 length of hospital stay: a systematic review and data synthesis. *BMC medicine* **18**(1), 1–22 (2020) 734
735
736
41. Khalili, M., Karamouzian, M., Nasiri, N., Javadi, S., Mirzazadeh, A., Sharifi, H.: Epidemiological characteristics of covid-19: a systematic review and meta-analysis. *Epidemiology & Infection* **148** (2020) 737
738
739
42. ISS: Sorveglianza Integrata COVID-19 in Italia. ISS (2020). https://www.epicentro.iss.it/coronavirus/bollettino/Infografica_22giugno%20ITA.pdf 740
741
43. ISS: Sorveglianza integrata COVID-19: archivio. ISS (2020). <https://www.epicentro.iss.it/coronavirus/sars-cov-2-sorveglianza-dati-archivio> 742
743
44. ISS: Epidemia COVID-19. Aggiornamento nazionale 15 settembre 2020. ISS (2020). https://www.epicentro.iss.it/coronavirus/bollettino/Bollettino-sorveglianza-integrata-COVID-19_15-settembre-2020.pdf 744
745
746
45. Grasselli, G., Zangrillo, A., Zanella, A., Antonelli, M., Cabrini, L., Castelli, A., Cereda, D., Coluccello, A., Foti, G., Fumagalli, R., *et al.*: Baseline characteristics and outcomes of 1591 patients infected with sars-cov-2 admitted to icus of the lombardy region, italy. *Jama* **323**(16), 1574–1581 (2020) 747
748
749
750
46. Wu, C., Chen, X., Cai, Y., Zhou, X., Xu, S., Huang, H., Zhang, L., Zhou, X., Du, C., Zhang, Y., *et al.*: Risk factors associated with acute respiratory distress syndrome and death in patients with coronavirus disease 2019 pneumonia in wuhan, china. *JAMA internal medicine* **180**(7), 934–943 (2020) 751
752
753
754
47. Armstrong, R., Kane, A., Cook, T.: Outcomes from intensive care in patients with covid-19: a systematic review and meta-analysis of observational studies. *Anaesthesia* **75**(10), 1340–1349 (2020) 755
756
757
48. Barkai, N., Leibler, S.: Robustness in simple biochemical networks. *Nature* **387**(6636), 913–7 (1997). doi:10.1038/43199 758
759
49. Dietz, K.: The estimation of the basic reproduction number for infectious diseases. *Statistical methods in medical research* **2**(1), 23–41 (1993) 760
761
50. Diekmann, O., Heesterbeek, J.A., Metz, J.A.: On the definition and the computation of the basic reproduction ratio R_0 in models for infectious diseases in heterogeneous populations. *J Math Biol* **28**(4), 365–382 (1990). doi:10.1007/BF00178324. Accessed 2020-04-07 762
763
764

51. Diekmann, O., Heesterbeek, J.A.P., Roberts, M.G.: The construction of next-generation matrices for compartmental epidemic models. *J R Soc Interface* **7**(47), 873–885 (2010). doi:10.1098/rsif.2009.0386. Accessed 2020-04-07 765
766
767
52. van den Driessche, P., Watmough, J.: Reproduction numbers and sub-threshold endemic equilibria for compartmental models of disease transmission. *Math Biosci* **180**, 29–48 (2002). doi:10.1016/S0025-5564(02)00108-6. Accessed 2020-06-17 768
769
770
53. Lavezzo, E., Franchin, E., Ciavarella, C., Cuomo-Dannenburg, G., Barzon, L., Del Vecchio, C., Rossi, L., Manganelli, R., Loregian, A., Navarin, N., *et al.*: Suppression of a SARS-CoV-2 outbreak in the Italian municipality of Voó. *Nature* **584**(7821), 425–429 (2020) 771
772
773
54. Li, R., Pei, S., Chen, B., Song, Y., Zhang, T., Yang, W., Shaman, J.: Substantial undocumented infection facilitates the rapid dissemination of novel coronavirus (sars-cov-2). *Science* **368**(6490), 489–493 (2020) 774
775
776
55. Annuario Statistico del Servizio Sanitario Nazionale. http://www.salute.gov.it/imgs/C_17_pubblicazioni_2879_allegato.pdf (2017) 777
778
56. ISTAT: Decessi e Cause di Morte: Cosa Produce l’Istat. (2020). <https://www.istat.it/it/archivio/240401> (Health, Demography, Society data) Last accessed: 31 July, 2020. 779
780
57. ISTAT: ISTAT-popolazione-e-famiglie. (2019). <https://www.istat.it/it/popolazione-e-famiglie?dati> (Mortality data) Last accessed: 31 July, 2020. 781
782
783
58. MATLAB: Version: 9.7.0 (R2019b). The MathWorks Inc., Natick, Massachusetts (2019). <https://www.mathworks.com/> 784
785
59. Raue, A., Steiert, B., Schelker, M., Kreutz, C., Maiwald, T., Hass, H., Vanlier, J., Tonsing, C., Adlung, L., Engesser, R., Mader, W., Heinemann, T., Hasenauer, J., Schilling, M., Hofer, T., Klipp, E., Theis, F., Klingmuller, U., Schoberl, B., Timmer, J.: Data2Dynamics: a modeling environment tailored to parameter estimation in dynamical systems. *Bioinformatics* **31**(21), 3558–60 (2015). doi:10.1093/bioinformatics/btv405 786
787
788
789
790
60. Anderson, R.M., May, R.M.: Vaccination and herd immunity to infectious diseases. *Nature* **318**(6044), 323–329 (1985) 791
792
61. Randolph, H.E., Barreiro, L.B.: Herd immunity: understanding covid-19. *Immunity* **52**(5), 737–741 (2020) 793
794
62. Alimohamadi, Y., Taghdir, M., Sepandi, M.: Estimate of the basic reproduction number for covid-19: a systematic review and meta-analysis. *Journal of Preventive Medicine and Public Health* **53**(3), 151 (2020) 795
796
797
63. Kucharski, A.J., Klepac, P., Conlan, A.J., Kissler, S.M., Tang, M.L., Fry, H., Gog, J.R., Edmunds, W.J., Emery, J.C., Medley, G., *et al.*: Effectiveness of isolation, testing, contact tracing, and physical distancing on reducing transmission of sars-cov-2 in different settings: a mathematical modelling study. *The Lancet Infectious Diseases* **20**(10), 1151–1160 (2020) 798
799
800
801
64. Hellewell, J., Abbott, S., Gimma, A., Bosse, N.I., Jarvis, C.I., Russell, T.W., Munday, J.D., Kucharski, A.J., Edmunds, W.J., Sun, F., *et al.*: Feasibility of controlling covid-19 outbreaks by isolation of cases and contacts. *The Lancet Global Health* **8**(4), 488–496 (2020) 802
803
804
805
65. Ministero della Salute. <http://www.dati.salute.gov.it/dati/homeDataset.jsp> (2019) 806
807

66. Bur n. 37 del 20 marzo 2020; Materia: Sanità e igiene pubblica. <https://bur.regione.veneto.it/BurvServices/pubblica/DettaglioDgr.aspx?id=417291> (2020)
67. International Labour Organization: Impact of Lockdown Measures on the Informal Economy A Summary. (2020). International Labour Organization. https://www.ilo.org/wcmsp5/groups/public/---ed_protect/---protrav/---travail/documents/briefingnote/wcms_743534.pdf
68. Ferretti, L., Wymant, C., Kendall, M., Zhao, L., Nurtay, A., Abeler-Dörner, L., Parker, M., Bonsall, D., Fraser, C.: Quantifying sars-cov-2 transmission suggests epidemic control with digital contact tracing. *Science* **368**(6491) (2020)
69. Moghadas, S.M., Fitzpatrick, M.C., Sah, P., Pandey, A., Shoukat, A., Singer, B.H., Galvani, A.P.: The implications of silent transmission for the control of covid-19 outbreaks. *Proceedings of the National Academy of Sciences* **117**(30), 17513–17515 (2020)
70. Bi, Q., Lessler, J., Eckerle, I., Lauer, S.A., Kaiser, L., Vuilleumier, N., Cummings, D.A.T., Flahault, A., Petrovic, D., Guessous, I., Stringhini, S., Azman, A.S., Baysson, H., Collombet, P., De Ridder, D., d'Ippolito, P., Rinella, M.D.-A., Dibner, Y., Merjani, N.E., Francioli, N., Frangville, M., Marcus, K., Martinez, C., Noel, N., Pennacchio, F., Perez-Saez, J., Picazio, A., Pishkenari, A., Piumatti, G., Portier, J., Pugin, C., Rakotomiaramananana, B., Richard, A., Salzmänn-Bellard, L., Schrepft, S., Zaballa, M.-E., Waldmann, Z., Wisniak, A., Davidovic, A., Duc, J., Guérin, J., Lombard, F., Will, M., Vernez, I.A., Keiser, O., Mattera, L., Schellongova, M., Lescuyer, P., Meyer, B., Poulain, G., Yerly, S., Chappuis, F., Welker, S., Courvoisier, D., Gétaz, L., Nehme, M., Pardo, F., Violot, G., Hurst, S., Matute, P., Maugey, J.-M., Pittet, D., L'Huillier, A.G., Posfay-Barbe, K.M., Pradeau, J.-F., Tacchino, M., Trono, D., Group, S.-P.S.: Insights into household transmission of sars-cov-2 from a population-based serological survey. *Nature Communications* **12**(1), 3643 (2021). doi:10.1038/s41467-021-23733-5
71. Byambasuren, O., Cardona, M., Bell, K., Clark, J., McLaws, M.-L., Glasziou, P.: Estimating the extent of asymptomatic covid-19 and its potential for community transmission: systematic review and meta-analysis. *Official Journal of the Association of Medical Microbiology and Infectious Disease Canada* **5**(4), 223–234 (2020)
72. Russo, F., Pitter, G., Da Re, F., Tonon, M., Avossa, F., Bellio, S., Fedeli, U., Gubiani, L., Monetti, D., Saia, M., *et al.*: Epidemiology and public health response in early phase of covid-19 pandemic, veneto region, italy, 21 february to 2 april 2020. *Eurosurveillance* **25**(47), 2000548 (2020)
73. Romagnani, P., Gnone, G., Guzzi, F., Negrini, S., Guastalla, A., Annunziato, F., Romagnani, S., De Palma, R.: The covid-19 infection: lessons from the italian experience. *Journal of public health policy* **41**, 238–244 (2020)
74. Grassly, N.C., Pons-Salort, M., Parker, E.P., White, P.J., Ferguson, N.M., Ainslie, K., Baguelin, M., Bhatt, S., Boonyasiri, A., Brazeau, N., *et al.*: Comparison of molecular testing strategies for covid-19 control: a mathematical modelling study. *The Lancet Infectious Diseases* **20**(12), 1381–1389 (2020)
75. Quilty, B.J., Clifford, S., Hellewell, J., Russell, T.W., Kucharski, A.J., Flasche, S., Edmunds, W.J., Atkins, K.E., Foss, A.M., Waterlow, N.R., *et al.*: Quarantine and testing strategies in contact tracing for sars-cov-2: a modelling study. *The Lancet Public Health* **6**(3), 175–183 (2021)
76. Kretzschmar, M.E., Rozhnova, G., Bootsma, M.C., van Boven, M., van de Wijgert, J.H., Bonten, M.J.: Impact of delays on effectiveness of contact tracing strategies for covid-19: a modelling study. *The Lancet Public Health* **5**(8), 452–459 (2020)