

# COVID-19 serological survey using micro blood sampling

Melissa M. Matthews<sup>1†</sup>, Tae Gyun Kim<sup>1†</sup>, Satoshi Shibata<sup>1†</sup>, Noriko Shibata<sup>1</sup>, Christian Butcher<sup>2</sup>, Jaekyung Hyun<sup>1</sup>, Keon Young Kim<sup>1</sup>, Theodore Robb<sup>3</sup>, Siang Sheng Jheng<sup>3</sup>, Masashi Narita<sup>4</sup>, Tomoari Mori<sup>5</sup>, Mary Collins<sup>6</sup> & Matthias Wolf<sup>1\*</sup>

<sup>1</sup>Molecular Cryo-Electron Microscopy Unit, Okinawa Institute of Science and Technology Graduate University (OIST), Onna-son, Okinawa, Japan.

<sup>2</sup>Fluid Mechanics Unit, OIST, Onna-son, Okinawa, Japan.

<sup>3</sup>IT Division, Infrastructure Section, OIST, Onna-son, Okinawa, Japan.

<sup>4</sup>Okinawa Chubu Hospital, Division of Infectious Diseases, Okinawa City, Okinawa, Japan

<sup>5</sup>Research Support Division, Occupational Health and Safety, OIST, Onna-son, Okinawa, Japan.

<sup>6</sup>Research Support Division, Office of the Provost, OIST, Onna-son, Okinawa, Japan.

<sup>†</sup>these authors have contributed equally

\*Correspondence to [matthias.wolf@oist.jp](mailto:matthias.wolf@oist.jp)

## Abstract

During August 2020, we carried out a serological survey among students and employees at the Okinawa Institute of Science and Technology Graduate University (OIST), Japan, testing for the presence of antibodies against SARS-CoV-2, the causative agent of COVID-19. We used a FDA-authorized 2-step ELISA protocol (1, 2) in combination with at-home self-collection of blood samples using a custom low-cost finger prick-based capillary blood collection kit. Although our survey did not find any COVID-19 seropositive individuals among the OIST cohort, it reliably detected all positive control samples obtained from a local hospital and excluded all negatives controls. We found that high serum antibody titers can persist for at least up to 6.5 months post infection. Among our controls, we found strong cross-reactivity of antibodies in samples from a serum pool from two MERS patients in the anti-SARS-CoV-2-ELISA. Here we show that a centralized ELISA in combination with patient-based capillary

NOTE: This preprint reports new research that has not been certified by peer review and should not be used to guide clinical practice.

30 blood collection using as little as one drop of blood can reliably assess the seroprevalence  
31 among communities. Anonymous sample tracking and an integrated website created a  
32 stream-lined procedure. Major parts of the workflow were automated on a liquid handler,  
33 demonstrating scalability. We anticipate this concept to serve as a prototype for reliable  
34 serological testing among larger populations.

35

## 36 **Background and Introduction**

37

38 At the beginning of 2020, COVID-19 emerged from Hubei province in southern China and  
39 quickly spread across the globe. Due to its proximity and direct flight connections between  
40 the epicenter in Wuhan and its capital Tokyo, the Japanese Nation was among the first to  
41 experience cases of the disease outside China, documenting its first case on January 15, 2020.  
42 In early April, as the tourism season in Okinawa began to ramp up, so did the new cases of  
43 COVID-19 in Okinawa. A first wave of COVID-19 cases peaked at the moderate rate of 10  
44 cases/day in mid-April (total number 132 cases), which was effectively reduced by 5 weeks of  
45 lock-down measures to no additional cases within the next two months. From early August  
46 on, however, a second, much stronger wave of infections has, at the time of this report,  
47 culminated in more than 2,682 accumulated cases on the island (October 8, 2020). The  
48 present study was conducted at the beginning of this second wave.

49

50 Serological surveys which detect the presence of antibodies against SARS-CoV-2  
51 antigens can provide important information to the government for issuing health care  
52 guidelines. At the beginning of April 2020, we obtained plasmids for coronavirus surface  
53 antigens from the Krammer Lab at the Icahn School of Medicine (NY, NY, USA). We established  
54 protein expression and purification in a mammalian cell line and set up an ELISA following the  
55 2-step assay developed by the same group (1). Their assay has received emergency use  
56 authorization by the U.S. Food & Drug Administration (FDA) (2). We secured PCR-confirmed  
57 human sera from COVID-19 positive patients at the local hospital as well as negative controls  
58 from serum collected before December 2019. Once the assay itself was validated, we set up  
59 partially automated sample handling on a robotic liquid handler, established a website with  
60 a barcoding system for anonymous sample tracking, and conducted a serological survey of  
61 staff and students at our institution.

62 In emergency situations such as during COVID-19, the health care system is under  
63 stress; it cannot be expected that trained clinical personnel are available to draw patient  
64 blood by venous puncture. Furthermore, non-essential human traffic in hospitals and other  
65 health care institutions should ideally be limited to protect vital health care workers from risk  
66 of exposure to potential carriers of the virus. To overcome this limitation, we distributed easy-  
67 to-use, self-administered micro blood sampling kits to participants. The kit uses a single-use  
68 safety lancet to collect a few drops of capillary blood from the participant's finger. We show  
69 that antibody titers obtained by micro blood sampling are equivalent to serum antibody titers  
70 from blood drawn by conventional venous puncture. This low-cost, easily deployable self-  
71 sampling method in combination with a highly sensitive and specific ELISA in a centralized  
72 testing lab provides a scalable solution that can enable serological surveys of larger  
73 populations.

74

## 75 **Methods**

76

### 77 *Protein Expression and Purification*

78 Plasmids for mammalian expression of the SARS-CoV-2 S (spike) protein receptor-binding  
79 domain (RBD, residues 319-541) and stabilized His-tagged SARS-CoV-2 S including a T4 foldon  
80 trimerization tag were generously provided by Florian Krammer and colleagues at the Icahn  
81 School of Medicine (NY, NY, USA) (3). Proteins were expressed in Expi293F cells and purified  
82 by Ni-NTA affinity and size-exclusion chromatography as described previously (1). The yield  
83 was 15 mg/L and 4 mg/L for RBD and the trimeric SARS-CoV-2 S, respectively. 500  $\mu$ L aliquots  
84 of purified protein at a concentration of 10  $\mu$ g/mL were frozen in liquid nitrogen and stored  
85 at -80 °C until use. We expressed and purified both the  $\Delta$ Cs (furin cleavage site deletion RRAR  
86 to A) and  $\Delta$ Cspp construct (cleavage site deletion and stabilizing mutations K986P and V987P)  
87 (3), but only the  $\Delta$ Cs protein was used in this study. Protein purity was verified by SDS-PAGE  
88 and confirmed by Western blot with MonoRab™ Anti-His Tag (C-term) Antibody (Nr. 25B6E11,  
89 GenScript, USA).

90

### 91 *Electron microscopy*

92 The quality and folding of two proteins, the RBD and SARS-CoV-2 S, were verified by  
93 biochemical methods and correct folding and assembly of the trimeric spike protein was

94 confirmed using cryo-electron microscopy (Figure 1). Sample solution was applied to a carbon  
95 coated copper grid and stained with 1 % uranyl acetate. The protein particles were visualized  
96 with a Talos L120 transmission electron microscope (Thermo Fisher Scientific, USA) operating  
97 at 120 kV acceleration voltage.

98 For cryo-EM, 3  $\mu$ L of purified trimeric spike sample solution was applied to UltrAuFoil  
99 R1.2/1.3 grids pre-treated with a Solarus advanced plasma system (Model 950, Gatan, USA)  
100 for 60 seconds at 25 °C in a 23 % H<sub>2</sub>, 77 % O<sub>2</sub> gas mix. The grids were blotted and vitrified in a  
101 Vitrobot Mark IV (Thermo Fisher Scientific, USA) using a liquid ethane-propane mixture. Cryo-  
102 EM grids and particle density were optimized by screening based on protein concentration in  
103 the range of 2-3 mg/mL. Particles Images of trimeric spike protein in amorphous ice were  
104 collected with a Titan Krios transmission electron microscope (Thermo Fisher Scientific, US)  
105 operating at 300 kV on a Falcon-3EC camera (Thermo Fisher Scientific, US) in counting mode,  
106 at a pixel size of 1.08 Å (at the specimen level). Frames from 1,479 movies were aligned, dose-  
107 weighted and summed using motioncor2 (4). Contrast transfer function (CTF) estimation,  
108 particle picking and 2D classification were performed with RELION 3.1 (5). A total of 1,119,504  
109 particles were picked semi-automatically, of which 297,144 particles were retained after 2D  
110 classification.

111

#### 112 *Sample collection and heat inactivation*

113 The micro blood sampling kits were assembled in 8x12 cm sealable plastic bags, including BD  
114 Microtainer<sup>®</sup> contact-activated lancet (Becton Dickison, NJ, USA), blood collection tube  
115 containing a coagulant and a separator gel (Greiner Bio-one MiniCollect<sup>®</sup> TUBE 0.5/0.8 CAT  
116 Serum Separation Clot Activator gold cap), packaged alcohol wipes, adhesive bandage, and  
117 peelable sticker with a linear tube barcode (Code 128) and a matching QR code encoding a  
118 link to our website. After finger prick with the safety lancet, users collected 1-5 drops (approx.  
119 30-150  $\mu$ L) of capillary blood into the serum separation tube and attached the linear barcode.  
120 Serum separation tubes were centrifuged at 5,000  $\times$  g for 5 min at 4 °C under biosafety level  
121 2 (BSL2) conditions, then inactivated in a water bath at 56 °C for 1 hr. Heat-inactivated  
122 samples were stored at 4 °C until use for ELISA. After scanning tube barcodes for each plate

123 into a CSV file with a hand-held scanner, separated serum was transferred into barcoded 96-  
124 well plates using manual pipetting.

125

### 126 *ELISA and automation*

127 We followed the 2-step ELISA protocol developed by the Krammer lab (1). ELISA plate formats  
128 were modified as depicted in Supplementary Figure 1C. Modified plate designs included two  
129 dilution series of positive control, which provided an internal standard. Additional negative  
130 controls were included to provide a cutoff that was consistently within the suggested range  
131 of 0.15-0.2 AU (Absorbance Units) at 492 nm.

132 We implemented a partially automated workflow on a Beckman Biomek FX<sup>P</sup> (Beckman  
133 Coulter, Indianapolis, IN, USA) liquid handling robot for two steps of the ELISA protocol,  
134 namely, for (i) dilution and transfer of serum samples for RBD screening plates and for (ii)  
135 plate developing and reading of all plates. Plates were stacked to maximize throughput and  
136 usage of available deck space. Automated dilution and transfer of serum samples utilized a  
137 96-well plate containing 5X diluted serum in PBS, termed the D1 (dilution 1) plate as a source  
138 plate. Sample from the D1 plate was diluted with a PBS-T milk solution in a second 96-well  
139 plate, termed the D2 (dilution 2) plate, and finally transferred to the destination ELISA plate  
140 according to the published protocol (1). After dilution, D1 plates were immediately wrapped  
141 in parafilm and stored at 4 °C. If a given sample tested positive against RBD antigen in step 1,  
142 a fresh 5x diluted sample was prepared using solution remaining in the serum separation  
143 tubes. If the volume of the remaining serum was insufficient, the 5x diluted sample from the  
144 D1 plate was used for the confirmatory step 2.

145 For automated plate development and reading, 100 µL of SigmaFast<sup>TM</sup> OPD  
146 development solution (Sigma Aldrich) was prepared according to the described protocol and  
147 added to all wells. A wait time was programmed in the liquid handler workflow so that exactly  
148 10 minutes after addition of OPD, 50 µL of 3 M HCl were added to quench the reaction.  
149 Immediately after addition of HCl to a given plate, the plate was automatically loaded into  
150 and read on a DTX800 multimode plate reader (Beckman Coulter, Indianapolis, IN, USA) at  
151 492 nm wavelength. Functions were added within the automation code to automatically  
152 calculate threshold values for each plate and output a “positive” or “negative” result for each

153 sample. All other steps, including washing on an AquaMax 4000 plate washer (Molecular  
154 Devices LLC, San Jose, CA, USA), were carried out manually.

155

### 156 *Controls and Standards*

157 Three positive controls in the form of intravenous blood sera from confirmed SARS-CoV-2  
158 PCR-positive patients (collected 10-30 days post onset of symptoms) were obtained from  
159 Naha Municipal Hospital, Naha, Japan. After titer analysis of all three samples (data not  
160 shown), the two samples with the strongest titers were pooled and used as the positive  
161 control for all assays. Positive controls (collected at least 90 days after onset of symptoms)  
162 for validation of the capillary blood collection method were obtained from Okinawa Chubu  
163 Hospital, Uruma City, Japan. Negative controls taken from patients prior to November 2019  
164 were obtained from Naha Municipal Hospital from intravenous blood, and from a commercial  
165 serum pool (Human Serum from human male AB plasma, Sigma Aldrich H4522-100ML, Batch  
166 #SLCD1948, serum was pooled prior to August 2019). Human MERS-convalescent serum and  
167 SARS-CoV-2 convalescent plasma (NIBSC code 20/130) were obtained from the National  
168 Institute of Biological Standards and Control, UK.

169

### 170 *Calculation of thresholds*

171 The threshold for each step 1 plate was defined as the average of the negative controls plus  
172 3 standards deviations of the negative controls as described previously (1). The average and  
173 median threshold for all step 1 plates was 0.161 AU and 0.166 AU, respectively. Initially, the  
174 threshold for the step 2 plate was calculated in the same manner as step 1. However, the  
175 threshold calculated with only three negative controls was below the recommended range  
176 (0.15-0.2 AU at 492 nm). Therefore, another threshold, calculated as 4-times the average  
177 blank, which has been demonstrated to be valid for identifying anti-SARS-CoV-2 antibody-  
178 positive samples was used instead (6). Average and median threshold for all step 2 plates  
179 were 0.196 AU and 0.1868 AU, respectively.

180

### 181 *Calculation of predictivity values*

182 The positive predictivity value (PPV) describes the likelihood that a sample which tests  
183 positive is a true positive. The negative predictivity value (NPV) describes the likelihood that

184 a sample which tests negative is a true negative (7). Estimated predictivity values were  
185 calculated using the following equations:

186

187 *positive predictivity value*

$$188 = \frac{\textit{sensitivity} \times \textit{prevalence}}{(\textit{sensitivity} \times \textit{prevalence}) + (1 - \textit{specificity})(1 - \textit{prevalence})}$$

189

190 *negative predictivity value*

$$191 = \frac{\textit{specificity} \times (1 - \textit{prevalence})}{[(1 - \textit{sensitivity}) \times \textit{prevalence}] + [\textit{specificity} \times (1 - \textit{prevalence})]}$$

192

193 *Website-based platform for test application and anonymous results reporting*

194 Test results were disseminated using a custom web application developed by the OIST IT  
195 section and deployed through Microsoft Azure cloud. The front page (Supplementary Figure  
196 1B) contained a disclaimer, an instructional video (Supplementary Information), a printable  
197 instruction sheet, and other basic information for participants.

198 The QR code printed and included in each blood sample collection kit was encoded  
199 with a unique web URL corresponding to the sample ID of the sticker placed on the sample  
200 tube (Supplementary Figure 1A). The stickers and QR codes were created with the mailing  
201 feature in Microsoft Office 365 Excel. Following a simple user flow (Supplementary Figure 2),  
202 participants could check their test results anonymously either by scanning the QR code with  
203 a smartphone or by entering the 6-digit sample ID matching the linear tube barcode.

204 Upon inputting a valid sample ID, participants were prompted to accept a disclaimer  
205 before viewing results. After accepting the disclaimer, participants were able to retrieve the  
206 status of their sample, including guidance on interpreting test results. Optional information  
207 about gender, prior symptoms, age, travel history could be entered voluntarily. This metadata  
208 was collected anonymously through a survey on the SurveyMonkey  
209 (<https://www.surveymonkey.com>) platform and linked to the sample ID which was passed as  
210 a hidden field via the participant's web browser. Each sample ID was stored in a database  
211 table along with values representing test results and disclaimer acceptance. The web  
212 application queried this database to retrieve the status of the requested sample ID. The  
213 sample IDs were composed of six characters generated randomly from the set of

214 alphanumeric characters (a-zA-Z0-9) (random string generator  
215 <https://www.random.org/strings/>), excluding letters O, I, l, Z, Q and numbers 0, 1, 2, 9 to  
216 minimize human read errors. Out of approximately  $10^{10}$  combinations, 1000 unique IDs were  
217 randomly selected. Some additional security features, such as request rate limiting, were  
218 implemented to restrict the use of automated tools to retrieve results for all possible sample  
219 IDs. Basic functions were developed to allow batch import and export of test results in a  
220 delimited text format, allowing easy transfer of data between the testing system and the web  
221 application database.

222

### 223 *Sequence alignments*

224 The full-length sequences of SARS-CoV, MERS-CoV S protein (UniProt ID: P59594 and K9N5Q8,  
225 respectively) were aligned pairwise using ClustalW2 (8), against the SΔcs sequence (3)  
226 (Supplementary Figure 3).

227

### 228 *Figure preparation and digital processing*

229 Images of protein gel and Western blot in Figure 1A were acquired by smartphone camera,  
230 cropped and adjusted for intensity level in Adobe Photoshop 2020 (Adobe Inc, USA). Original  
231 unaltered gel images are available as supplementary files. Original uncropped digital electron  
232 micrographs used for Figure 1B and 1C are available as supplementary files. Graphs in Figures  
233 2-5 were plotted with GraphPad Prism v8.4.3 (GraphPad Software, USA), using the scatter  
234 plot function (Figure 2).

235

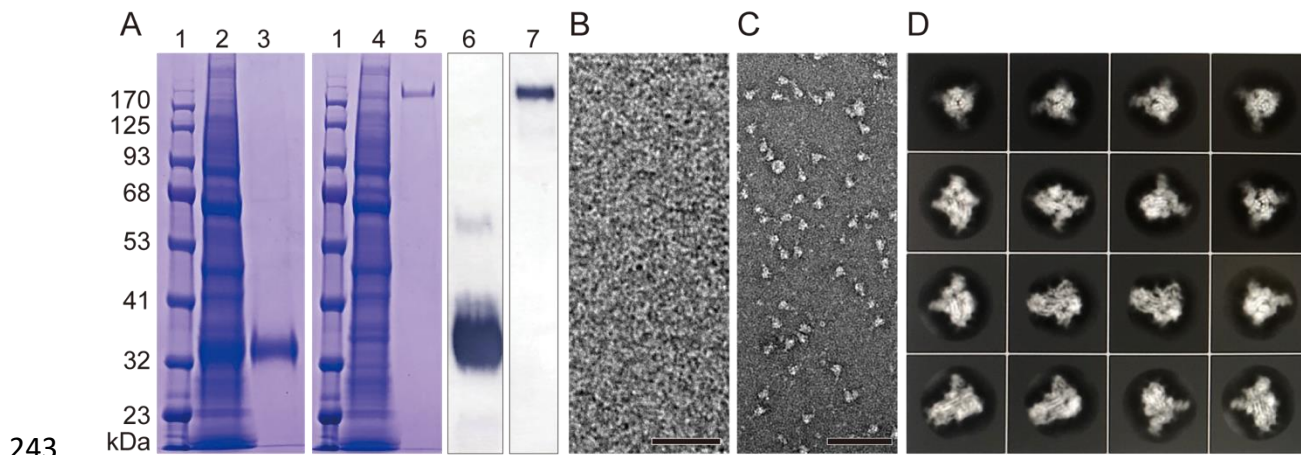
## 236 **Results**

237

### 238 *Protein preparation and validation*

239 SARS-CoV-2 trimeric spike and its receptor-binding domain (RBD) were expressed in  
240 mammalian cells and purified. The quality was verified by Western blot and electron  
241 microscopy (Figure 1 A-C). We performed single particle cryo-EM and 2D-image classification.  
242 This confirmed that the trimeric spike protein was properly folded and assembled (Figure 1D).





243

244

245 **Figure 1. A.** SDS-PAGE of expressed and purified RBD and spike proteins. Lane: 1,  
246 molecular weight marker; 2, cell lysate of expressed RBD; 3, purified RBD; 4, cell lysate  
247 of expressed SARS-CoV-2 S; 5, purified spike; 6 and 7, Western blot of purified RBD  
248 and spike, respectively. **B** and **C.** Electron micrographs of negatively stained purified  
249 RBD and spike protein, respectively. **D.** 2D class averages from boxed aligned single-  
250 particle cryo-EM images of the trimeric spike protein, showing secondary structure  
251 elements indicative of proper folding. Box size 28 nm. Scale bars 20 nm 100 nm in B  
252 and C, respectively. Original images are available as supplementary data files.

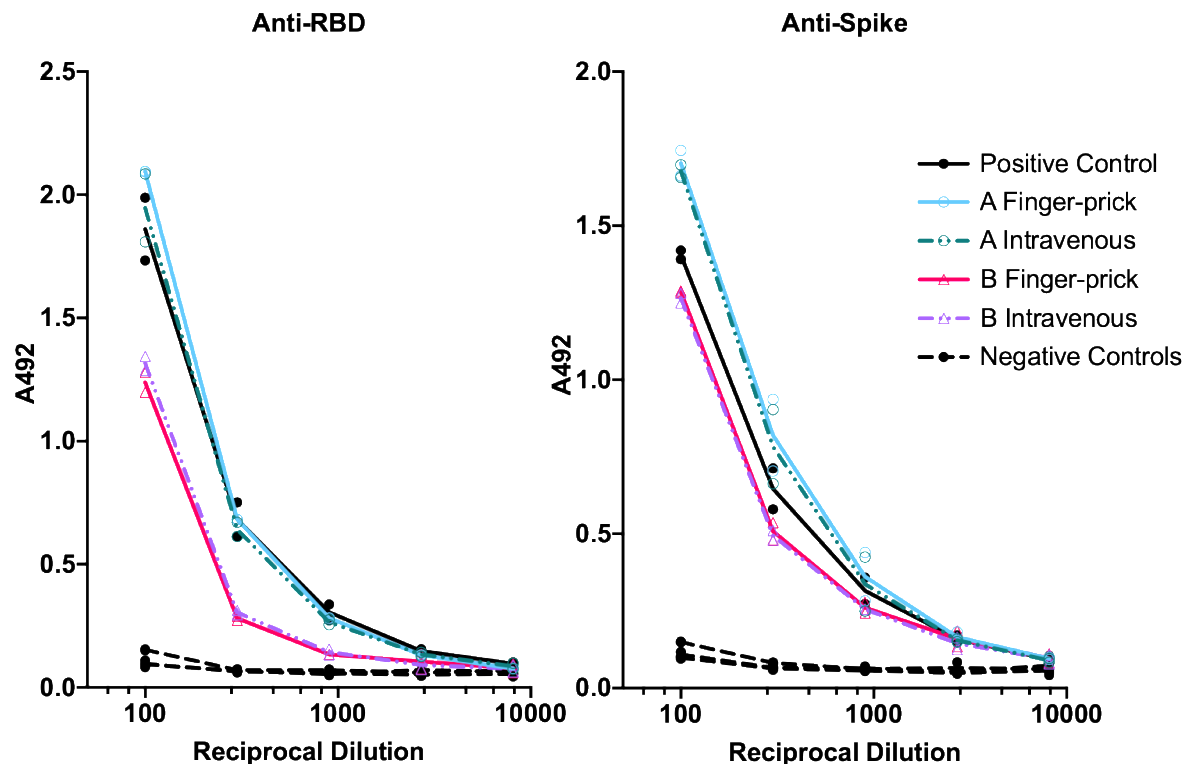
253

#### 254 *Validation of micro blood sampling method.*

255 Serum samples are typically separated from intravenously collected blood. To confirm that  
256 the finger-prick method neither causes unforeseen complications nor affects assay sensitivity,  
257 blood samples from two confirmed SARS-CoV-2 PCR-positive individuals were taken both  
258 intravenously and by finger-prick on the same day. Although these samples were collected at  
259 least 92 days post exposure, they retained a high antibody titer comparable to positive  
260 controls, which were collected 10-30 days post onset of symptoms.

261 The MiniCollect<sup>®</sup> capillary blood collection tube contains a prefilled volume of a  
262 polymer gel with a lithium heparin coagulant, which induces blood clotting and can separate  
263 the blood clot from serum by centrifugation. Separated serum from four samples were tested  
264 in a dilution series in duplicate on both an RBD-coated ELISA plate and a trimeric spike-coated  
265 ELISA plate according to the “step 2” ELISA protocol (1) (see Methods and modified plate

266 layout in Supplementary Figure 1C). For both individuals, titers of intravenous and capillary  
267 blood were similar on both the RBD-coated and the spike-coated plate (Figure 2).  
268



269

270

271 **Figure 2: Serum antibody titers from intravenously collected blood and capillary**  
272 **blood obtained by finger prick are equivalent.** Individuals A and B provided blood  
273 samples both intravenously and also by micro-blood collection at least 90 days post  
274 exposure. Their endpoint titers were comparable to the positive controls. Each sample  
275 was tested in duplicate on the same ELISA plate, either coated with SARS-CoV-2 spike  
276 RBD (left) or with SARS-CoV-2 trimeric spike protein (right). Each replicate is plotted.  
277 Line connects average values. Positive control was pooled serum collected from two  
278 SARS-CoV-2 PCR-positive individuals 10-30 days after onset of symptoms. Negative  
279 controls were collected from individuals prior to November 2019.

280

### 281 *Serological Survey*

282 Overall, 675 sample tubes were collected and processed. Among all the samples received,  
283 zero samples showed signal above threshold in both the RBD screening plate and the spike  
284 confirmatory plate.

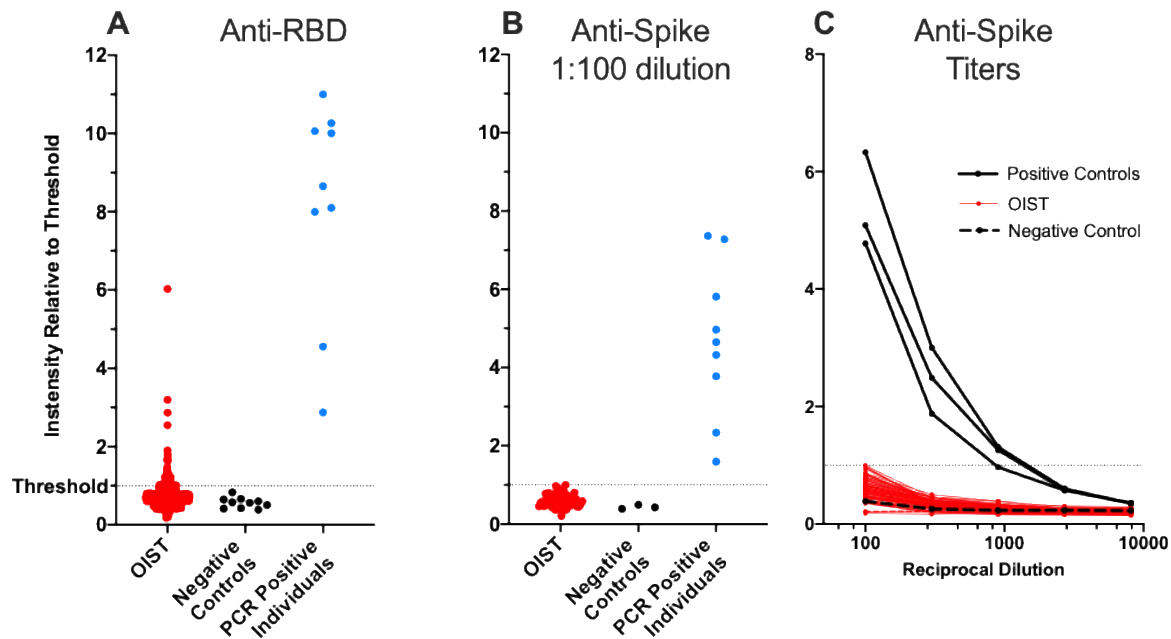
285 Samples were typically collected, serum separated, and heat-inactivated at the end of  
286 each day. Nonetheless, most blood samples can be stored at room temperature in the serum  
287 separation tube for several days, in some cases with larger blood volume for up to 1 week.  
288 Longer than 1 week is not recommended because the blood begins to dry up. Antibody titers  
289 after serum separation have been reported as stable for up to 6 weeks when stored at 4 °C  
290 (9). Some participants had difficulty collecting their blood by themselves. In such cases, we  
291 encouraged participants to visit the nurses in our institute's Health Center for assistance.

292 The results for RBD ELISA step 1 are summarized in Figure 3A. Intensities were scaled  
293 with respect to the threshold for each plate. Results were compared with multiple negative  
294 controls and a collection of serum samples from SARS-CoV-2 PCR positive individuals. A subset  
295 of 63 OIST samples had serum antibody reactivity above the established threshold, and only  
296 a few were at the same level as the PCR-positive individuals. Titers from all PCR-positive  
297 individuals were above the threshold. Samples from all PCR-positive individuals were taken  
298 by capillary blood collection at least one month post onset of symptoms.

299 Results for the final ELISA step 2 are shown in Figure 3B and 3C. Of the 63 OIST samples  
300 that were positive in RBD step 1, all had serum antibody reactivity below threshold for all 5  
301 dilutions when tested against the SARS-CoV-2 trimeric spike protein in step 2, indicating a  
302 9.9% false positive rate in the highly sensitive step 1. Antibody titers (Figure 3C) of serum  
303 samples from all PCR positive individuals were above the threshold for at least two dilutions.  
304 Results were classified as "positive" (above threshold), "negative" (below threshold), or  
305 "undetermined". All RBD-positive OIST samples were below threshold in the anti-spike ELISA  
306 (Figure 3B and 3C). The most common cause of an undetermined result was the failure to  
307 provide sufficient serum. This was the case for 40 of the 675 samples that we received. If the  
308 result was undetermined, the participant was encouraged to pick up another kit and try again.

309 From the SurveyMonkey platform, 206 completed surveys were received, or 31 % of  
310 all samples collected. The collective results showed that 17 % of the survey takers believed  
311 that they had experienced some COVID-19 symptoms in the past 6 months and 31 % had  
312 travelled outside of Okinawa in the past 6 months. The age distribution was as follows: 20-40  
313 years old, 60 %; 40-60 years, 36 %; greater than 60 years, 4 %. The gender distribution was  
314 roughly equal.

315



316

317

318

319

320

321

322

323

324

325

326

### 327 *Assay Specificity*

328

329

330

331

332

333

334

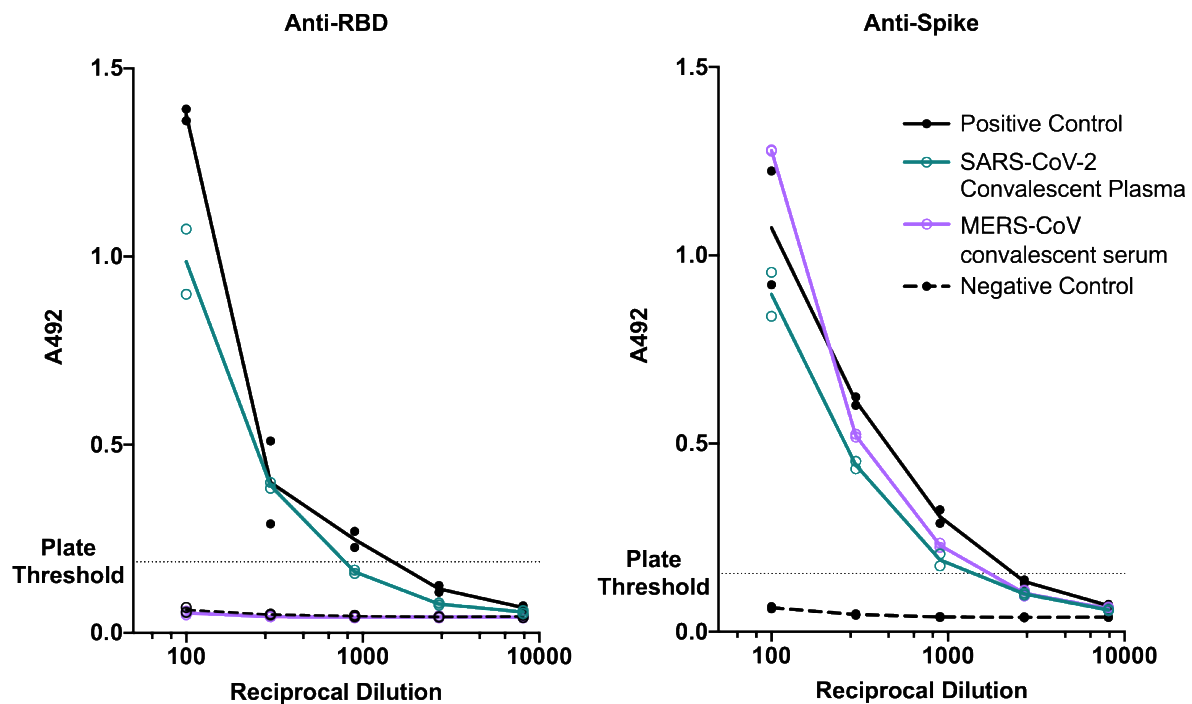
335

336

**Figure 3: Summary of OIST Serological Survey.** **A.** In assay step 1 (anti-RBD ELISA), 63 OIST samples were above the threshold (3 standard deviations above the average negative control). **B.** All positives from step 1 were tested in step 2 (anti-spike ELISA). No OIST samples were above the threshold (4 times the average background). **C.** Step-2 titers were measured at dilutions 1:100, 1:300, 1:900, 1:2700, and 1:8100. Positive controls showed much stronger signal than the OIST samples even at high dilution. The dotted line indicates the respective threshold level. All negative controls are samples taken from patients prior to November 2019. Sera from PCR positive individuals were collected at least 10-30 days post onset of symptoms.

The specificity of the Mount Sinai Hospital Clinical Laboratory COVID-19 ELISA Antibody Test has been reported as 100 % for 74 negative control samples (10) and the developers demonstrated no cross-reactivity against the common coronavirus strain NL63 (3). Of note, as part of the protocol establishing process, we used a SARS-CoV-2 convalescent plasma (NIBSC code 20/130) and human MERS-convalescent serum to confirm the specificity of the assay in both steps. As expected, SARS-CoV-2 convalescent plasma showed strong reactivity in both plates. MERS-convalescent serum, on the other hand, was negative in anti-RBD cross-reactivity, but positive in anti-spike cross-reactivity (Figure 4).

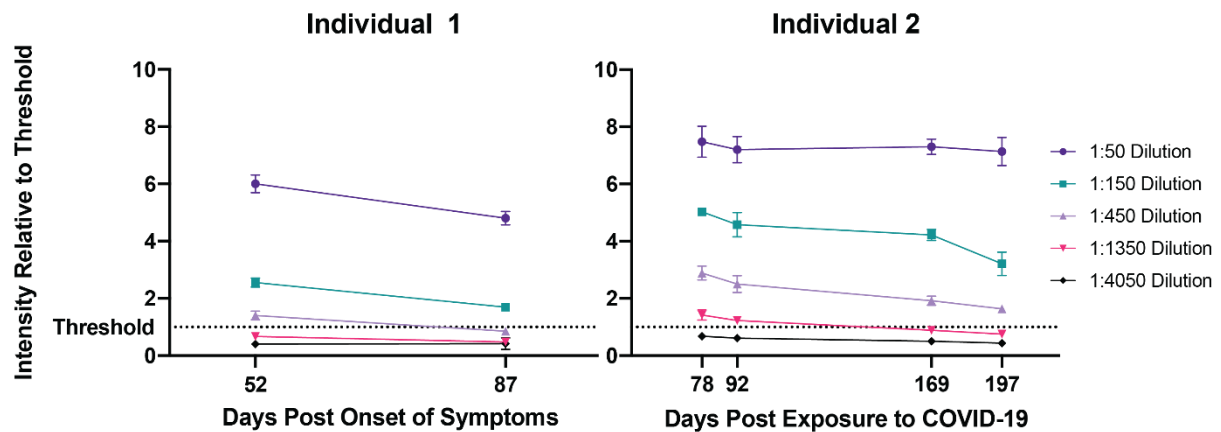
337 To understand the basis of the MERS-convalescent serum cross-reactivity, we performed an  
338 amino acid sequence alignment of SARS-CoV-2 spike and MERS-CoV spike protein. Sequence  
339 alignment demonstrated that the SARS-CoV-2 RBD shares 18.7 % identity with MERS-CoV RBD,  
340 but alignment of the full-length spike sequence demonstrated higher 32.3 % sequence  
341 identity between SARS-CoV-2, and MERS-CoV (Supplementary Figure 3).  
342



343  
344 **Figure 4: Titers of SARS-CoV-2 and MERS-CoV convalescent serum in RBD and spike**  
345 **ELISA.** Each sample was tested in duplicate on the same plate. Line connects average  
346 values. Positive control is pooled serum from two CoV-2 PCR positive individuals 10-  
347 30 days after onset of symptoms. Negative control is from a commercial serum pool.

#### 348 349 *Longevity of Antibody Titers*

350 We obtained multiple samples from two PCR-confirmed SARS-CoV2 positive individuals over  
351 an extended period of time and analyzed their serum antibody titers against the spike protein  
352 by ELISA. Individual 2 has a known exposure date, because the person was part of a  
353 documented cluster infection. Antibody titer was measured by anti-spike ELISA in a series of  
354 dilutions (Figure 5) in quadruplicate. Anti-spike antibodies titer remained above threshold 6.5  
355 months post exposure.



356

357

358

359

360

361

362

363

364

365

**Figure 5: Resiliency of anti-spike antibody titer over time.** Serum samples from two recovered COVID-19 patients were collected at 52 and 87 days post onset of symptoms (Individual 1, left) or at 78, 92, 169, and 197 days post exposure to the COVID-19 virus (Individual 2, right). Anti-spike antibody titers were measured by ELISA at 50, 150, 450, 1350, and 4050 times dilution in quadruplicate. The average and standard deviation for each dilution of each sample is plotted, revealing detectable antibody titers at 1:450 dilution for up to 6.5 months post exposure.

## 366 Discussion

367

### 368 *Micro blood sampling is a good alternative to venous blood collection*

369

370

371

372

373

374

375

376

377

378

379

380

Micro blood sampling by finger prick at home avoids unnecessary risk and effort by healthcare workers and allows parallel collection of large numbers of samples within a short period of time. The combination of patient-driven sample self-collection with a standardized highly specific and selective ELISA in a centralized lab improves the reliability of results while keeping costs low. Serum can be separated from whole blood up to 1 week after collection. Provided that temperatures are kept close to ambient temperature, this would allow for shipping of samples from collection site to the testing site by mail. The main bottleneck is serum transfer from collection tube to ELISA plate. This step may be accelerated with a sophisticated integrated liquid handling system. We showed that antibody titers from capillary blood serum are equivalent to titers measured from venous blood (Figure 2). The Infectious Diseases Society of America Guidelines on the Diagnosis of COVID-19 currently make no recommendations for or against the use of capillary blood in serological assays due to a

381 knowledge gap on the subject (11). We hope that the success of our study begins to fill this  
382 knowledge gap, paving the way for further proof-of-concept studies using capillary blood. Our  
383 survey revealed that micro blood sampling of capillary blood is a practical, cost-efficient  
384 method using as little as one drop of blood (approximately 30  $\mu$ L) per sample. Such a small  
385 sample volume would even allow testing of newborns using neonatal heel prick.

386

#### 387 *Anonymization and web-based reporting*

388 The web-based platform served as an efficient means to conduct this study anonymously  
389 while providing instructions and communicating results to participants. Anonymization was  
390 achieved by randomly barcoded samples without the need to enter personal data. From the  
391 1,154 staff and students at OIST (as of May 2020), 675 samples were received, of which only  
392 41 samples (6.1%) could not be tested due to lack of serum or improper sample collection.  
393 The success of our practical web-based method indicates that this method may be used for  
394 larger epidemiological studies.

395

#### 396 *Significance of OIST results*

397 The serological survey of students and employees carried out at OIST on Okinawa, Japan, in  
398 August 2020 revealed no seroconversion among this small population. The test has reliably  
399 identified all previously confirmed PCR-positive individuals and controls, with reactivities as  
400 high as 7 times threshold. Our results assert strong confidence in this 2-step assay, which has  
401 received FDA-emergency approval (2).

402 Okinawa has, thus far, enjoyed moderately low numbers of COVID-19 cases among its  
403 population. Other recent serological surveys in Japan, have found seroprevalence as low as  
404 [0.43 %](#) (among 44,066 employees and business partners of the company Softbank and  
405 healthcare workers across Japan) (12), 0.1 % (1,971 citizens of Tokyo), 0.03 % (3,009 citizens  
406 in Miyagi Prefecture) and [0.17 %](#) (2,970 citizens of Osaka prefecture) (13). At such low  
407 seroprevalence, high assay specificity is critical to achieving a high predictive value (14, 15).  
408 Although accurate estimation of the actual seroprevalence among OIST staff and students  
409 (including the 45 % of employees that did not participate in the survey) is not possible,  
410 assuming a seroprevalence between 0.03 % (Tokyo) and 0.43 % (Softbank), with a known  
411 assay specificity of close to 100 % and a sensitivity of 92.5 % for the Mt. Sinai Antibody Test

412 used here (10), we estimate the negative predictivity value of our assay to be greater than  
413 99.9%.

414

#### 415 *Longevity of antibody titers*

416 Analysis of serum antibody titers against SARS-CoV2 spike protein taken at multiple time  
417 points from two PCR-positive individuals post onset of symptoms (or post verified exposure)  
418 revealed only moderate decrease over time, with robust antibody titers above threshold  
419 persisting for up to 6.5 months (Figure 5). In combination with recent reports of high efficacy  
420 of vaccines currently in phase-3 trials, our results add to the growing amount of evidence that  
421 spike-based vaccines may be able to elicit longer-lasting immunity.

422

#### 423 *Cross-reactivity of MERS convalescent serum with SARS-CoV-2 spike protein*

424 SARS-CoV, SARS-CoV-2 and other human coronaviruses such as NL63 use aceE2 as  
425 receptor (16, 17) mediated by the class-1 fusion protein S before entry through the plasma  
426 membrane, or via a clathrin-dependent endosomal pathway (18). MERS-CoV utilizes a similar  
427 mechanism but uses the dipeptidyl peptidase 4 receptor (dpp4) instead (19). Dpp4 does not  
428 share sequence and structural similarity to previously identified human coronavirus receptors  
429 such as ACE2 or APN (16, 17, 20). Convalescent plasma samples from SARS-CoV-infected  
430 patients have moderate cross-reactivity with SARS-CoV-2 spike protein, but no cross-  
431 neutralization (21). The assay used here has been shown to have no cross-reactivity with the  
432 seasonal human coronavirus NL63 (3). Interestingly, when we tested human convalescent  
433 serum from MERS patients with our ELISA, we found explicit cross-reactivity between MERS  
434 serum and SARS-CoV-2 spike with an antibody titer similar to that of SARS-CoV-2 plasma. Our  
435 sequence alignment indicated only 18.7 % sequence identity between SARS-CoV-2 RBD and  
436 MERS-CoV RBD. On the other hand, we found 32.3 % identity between SARS-CoV-2 and MERS-  
437 CoV spike (S) (Supplementary Figure 3), indicating higher sequence conservation in the other  
438 domains of the spike protein, thus providing a possible explanation for the observed cross-  
439 reactivity. For a given SARS-CoV-2 convalescent serum sample with an anti-spike titer of  
440 >1:1350, the probability of viral neutralization at the FDA-recommended level for  
441 convalescent plasma used for COVID-19 treatment (viral neutralization titer  $\geq$ 1:160), has been  
442 found to be  $\geq$ 80 % (22). Our data shows strong MERS cross-reactivity with SARS-CoV-2 spike  
443 at titers close to 1:1350. Although most effective neutralizing antibodies against



444 coronaviruses target the RBD, neutralizing antibodies against SARS-CoV-2 S1-N-terminal  
445 domain (23) and SARS-CoV S2 domain (24) have also been identified. Our data suggests that  
446 MERS convalescent serum may also contain such neutralizing antibodies against SARS-CoV-2.

447

#### 448 **Author contributions**

449

450 M.M., ELISA implementation, validation, analysis. M.M., S.S., N.S., ELISA execution. S.S., test  
451 kit development. T.K., N.S., protein expression. T.K., protein purification. T.K., J.H., electron  
452 microscopy and image analysis. C.B., workflow automation. K.K., sequence alignment. T.R.,  
453 S.J., website design, sample codes. M.N. provided finger-prick validation samples, controls,  
454 and collected long-term samples. T.M., medical advice and study ethics. M.C., mentoring and  
455 advice, website content, study ethics. M.W. project creation and supervision. M.M., M.W.  
456 wrote initial draft. All authors edited and contributed to the final manuscript.

457

#### 458 **Competing interests**

459

460 The authors declare no competing interests.

461

#### 462 **Ethics, consent, and permissions**

463

464 The experiments were conducted according to a proposal approved by the OIST Human  
465 Subjects Research Review Committee (Protocol Title: "Survey of antibody retention rate for  
466 OIST staff and students against SARS-CoV-2"; application reference number: HSR-2020-026).  
467 All methods, including obtaining informed consent, were conducted in accordance with the  
468 Declaration of Helsinki and other relevant guidelines including the Ethical Guidelines for  
469 Medical and Health Research Involving Human Subjects set forth by the Japanese government.  
470 Consent to publish the accumulated anonymized data has been obtained from all participants  
471 of the study upon enrollment. The protocol for the positive control samples has been  
472 approved by the Institutional Review Board (IRB) of Okinawa Chubu Hospital with the  
473 confirmation number 2020-23. This protocol is furthermore included in the application with  
474 reference number HSR-2020-16-2 approved by the OIST Human Subjects Research Review

475 Committee (Protocol Title: “Establishment of new serological diagnostic test by ELISA to grasp  
476 the post-infection population with novel coronavirus in Okinawa”).

477

#### 478 **Data availability**

479

480 Original uncropped unscaled images for Figures 1 A-D are available as supplementary files.

481 Requests for further information or raw data should be directed to the corresponding author.

482

#### 483 **Acknowledgements**

484

485 MERS-CoV convalescent sera was kindly provided by Dr Giada Mattiuzzo (NIBSC, United

486 Kingdom), in collaboration with Dr Manki Song (International Vaccine Institute, South Korea)

487 Chungnam National University Hospital, and funded by Coalition for Epidemic Preparedness

488 Innovations (CEPI, Norway). We thank Kieran Deasy and Mouez Lassoued for 3D-printing tube

489 racks. We are grateful to Mahesh Bandi for advice on statistics and to Alejandro Villar Brillones

490 for advice on automation. We thank Chris Wu for developing the website’s theme and

491 stylesheets. We thank Pinaki Chakraborty for providing the time and expertise of his

492 technician C.B. This work was supported by the Platform Project for Supporting Drug

493 Discovery and Life Science Research (BINDS) from AMED, under grant number

494 JP18am0101076 (to M.W.). We acknowledge financial support by OPG for a larger serological

495 study, as well as direct funding from OIST.

496

#### 497 **References**

498

499 1. D. Stadlbauer *et al.*, SARS-CoV-2 Seroconversion in Humans: A Detailed Protocol for a

500 Serological Assay, Antigen Production, and Test Setup. *Curr. Protoc. Microbiol.* **57**

501 (2020), doi:10.1002/cpmc.100.

502 2. “Accelerated emergency use authorization (EUA) summary COVID-19 ELISA IGG

503 antibody test (Mount Sinai Laboratory)” (2020), (available at

504 <https://www.fda.gov/media/137029/download>).

505 3. F. Amanat *et al.*, A serological assay to detect SARS-CoV-2 seroconversion in humans.

506 *Nat. Med.* **26**, 1033–1036 (2020).

- 507 4. S. Q. Zheng *et al.*, MotionCor2: anisotropic correction of beam-induced motion for  
508 improved cryo-electron microscopy. *Nat. Methods*. **14**, 331–332 (2017).
- 509 5. J. Zivanov *et al.*, New tools for automated high-resolution cryo-EM structure  
510 determination in RELION-3. *Elife*. **7** (2018), doi:10.7554/eLife.42166.
- 511 6. S. Pickering *et al.*, Comparative assessment of multiple COVID-19 serological  
512 technologies supports continued evaluation of point-of-care lateral flow assays in  
513 hospital and community healthcare settings. *PLOS Pathog.* **16**, e1008817 (2020).
- 514 7. D. G. Altman, J. M. Bland, Statistics Notes: Diagnostic tests 2: Predictive values. *BMJ*.  
515 **309**, 102 (1994).
- 516 8. M. A. Larkin *et al.*, Clustal W and Clustal X version 2.0. *Bioinformatics*. **23**, 2947–2948  
517 (2007).
- 518 9. D. Stadlbauer *et al.*, Anti-SARS-CoV -2 Spike Antibodies are Stable in Convalescent  
519 Plasma when Stored at 4° Celsius for at Least 6 Weeks . *Transfusion* (2020),  
520 doi:10.1111/trf.16047.
- 521 10. A. Wajnberg *et al.*, *medRxiv*, in press, doi:10.1101/2020.07.14.20151126.
- 522 11. K. E. Hanson *et al.*, Infectious Diseases Society of America Guidelines on the Diagnosis  
523 of COVID-19: Serologic Testing. *Clin. Infect. Dis.* (2020), doi:10.1093/cid/ciaa1343.
- 524 12. “Softbank Group Antibody Test Results” (2020), (available at  
525 <https://group.softbank/system/files/pdf/antibodytest.pdf>).
- 526 13. “Tokyo Osaka and Miyagi Prefecture Antibody Possession Survey Results” (2020),  
527 (available at <https://www.mhlw.go.jp/content/10906000/000640184.pdf>).
- 528 14. J. D. Whitman *et al.*, Evaluation of SARS-CoV-2 serology assays reveals a range of test  
529 performance. *Nat. Biotechnol.* **38**, 1174–1183 (2020).
- 530 15. N. C. Brownstein, Y. A. Chen, *medRxiv Prepr. Serv. Heal. Sci.*, in press,  
531 doi:10.1101/2020.06.04.20122358.
- 532 16. W. Li *et al.*, Angiotensin-converting enzyme 2 is a functional receptor for the SARS  
533 coronavirus. *Nature*. **426**, 450–454 (2003).
- 534 17. F. Li, W. Li, M. Farzan, S. C. Harrison, Structural biology: Structure of SARS coronavirus  
535 spike receptor-binding domain complexed with receptor. *Science (80-. )*. **309**, 1864–  
536 1868 (2005).
- 537 18. T. Tang, M. Bidon, J. A. Jaimes, G. R. Whittaker, S. Daniel, Coronavirus membrane  
538 fusion mechanism offers a potential target for antiviral development. *Antiviral Res.*

- 539           **178** (2020), , doi:10.1016/j.antiviral.2020.104792.
- 540   19.   V. S. Raj *et al.*, Dipeptidyl peptidase 4 is a functional receptor for the emerging human  
541           coronavirus-EMC. *Nature*. **495**, 251–254 (2013).
- 542   20.   N. Wang *et al.*, Structure of MERS-CoV spike receptor-binding domain complexed  
543           with human receptor DPP4. *Cell Res*. **23**, 986–993 (2013).
- 544   21.   H. Lv *et al.*, Cross-reactive Antibody Response between SARS-CoV-2 and SARS-CoV  
545           Infections. *Cell Rep*. **31** (2020), doi:10.1016/j.celrep.2020.107725.
- 546   22.   E. Salazar *et al.*, Convalescent plasma anti-SARS-CoV-2 spike protein ectodomain and  
547           receptor binding domain IgG correlate with virus neutralization. *J. Clin. Invest.* (2020),  
548           doi:10.1172/jci141206.
- 549   23.   X. Chi *et al.*, A neutralizing human antibody binds to the N-terminal domain of the  
550           Spike protein of SARS-CoV-2. *Science (80-. )*. **369**, 650–655 (2020).
- 551   24.   J. Duan *et al.*, A human SARS-CoV neutralizing antibody against epitope on S2 protein.  
552           *Biochem. Biophys. Res. Commun.* **333**, 186–193 (2005).
- 553