

The Statistical Monitoring by Adaptive RMSTD Tests: an efficient, informative, and customizable method for the complete internal quality control intended for low-frequent sampling of control measures

Author:

Christian Beier

Correspondence:

Christian Beier

Autoimmune Differentiation and Microbiological Expert Diagnostics

ADMEDIA Medical Care Center Waldenburg

Weg des Friedens 4

08396 Waldenburg

Germany

e-mail: christian.beier © admedia-diagnostik.de

Number of tables: 3

Number of figures: 2

Abstract:

Two control mechanisms are relevant to perform an internal quality assurance: a permissible limit L_{SMC} applied to single measures of control samples and a retrospective statistical analysis to detect increased imprecision and baseline drifts. A common statistical metric is the root mean square (total) deviation (RMSD/RMSTD). To focus on recent changes under low-frequent sampling conditions, the monitored amount of retrospective data is usually very small. Unfortunately, the calculated RMSTD of a small data set with $n < 50$ samples has a significant statistical uncertainty that needs to be considered in adequate limit definitions. In particular, the minimum reasonable limit $L_{RMSTD}(n)$, applied to the RMSTD of a series of n samples, decreases from L_{SMC} (e.g., $2.33 \cdot \text{standard_deviation} + \text{bias}$) for $n=1$ towards $L_{\text{true_RMSTD}}$ for $n \rightarrow \infty$ (long-term statistics). Two mathematical approaches were derived to reliably estimate an optimal function to adjust $L_{RMSTD}(n)$ to small sample sizes.

This knowledge led to the development of a new quality-control method: the Statistical Monitoring by Adaptive RMSTD Tests (SMART). SMART requires just one mandatory limit (either L_{SMC} or $L_{\text{true_RMSTD}}$) per analyte. By definition of up to 7 possible alert levels, SMART can early recognize and evaluate both the significance of a single outlier and establishing critical trends or shifts in recent SMC data. SMART is intended to efficiently monitor and evaluate small amounts of control data.

Keywords:

SMART; internal quality control; clinical chemistry; statistical uncertainty; root mean square total deviation; RMSD; RMSTD; multivariate CI; multidimensional confidence interval of a series; MDCI; Rili-BAEK; retrospective analysis; multirule; Westgard

NOTE: This preprint reports new research that has not been certified by peer review and should not be used to guide clinical practice.

Abbreviations:

CI: confidence interval; CI_{Δ}^{up} : upper limit of the confidence interval of Δ ; Δ : the “true” RMSTD value determined using large amounts of data; GPD: Gaussian probability density; IQC: internal quality control; L_{SMC} : IQC limit applied to single measures of a control material; L_{Δ} : IQC limit dedicated to the true (long-term) RMSTD; MDCI: multidimensional confidence interval; RA: retrospective (statistical) analysis of SMC data; Rili-BAEK: Guideline of the German Medical Association on Quality Assurance in Medical Laboratory Examinations; RMSD: root mean square deviation (empirical standard deviation); RMSTD: root mean square total (or target) deviation with respect to a known target value; SMART: Statistical Monitoring by Adaptive RMSTD Tests; SMC: single measurements of a control sample

1 Introduction

Quality assurance and particularly the internal quality control (IQC) are essential requirements to monitor measuring processes in industry and health care. The vast amount of related literature can only be inadequately covered [1-5]. Fortunately, the homepage of Westgard et al. [6] has been established as an informative hot spot with regard to quality assurance in clinical chemistry - demonstrating that it is a versatile and still open topic.

Regulations concerning the IQC in clinical chemistry prescribe consecutive single measurements of at least one control sample (SMC data). Each SMC value is compared to a given maximum permissible limit (L_{SMC}) to monitor the measuring uncertainty of an operating device as well as the degradation state of used reagents. A lot of experience already exist to determine L_{SMC} . The main concepts base on state-of-the-art limits (utilizing performance metrics of the technique), biological variation, and/or partitioned clinical decision ranges. The L_{SMC} defines an in-control range for SMC results with regard to the target value of the control sample. The target value is predefined either by a reference institution or the manufacturer (labeled control sample). For unlabeled control samples a substitute of the target value can be generated by oneself during an evaluation period and possibly additional peer-group data. However, a self-evaluated target value restricts the IQC to a quality monitoring with respect to the state during the evaluation period. Persistent systematic errors of the device, lot, and procedure as well as long-term environmental influences are therefore probably unnoticed.

Another integral part of IQC is a statistical retrospective analysis (RA) of quantitative SMC data at the end of an evaluation period, at the ends of consecutive sampling periods, or by an on-the-fly statistical approach [7-10]. An efficient and widely used statistical metric is the root mean square (total) deviation (RMS(T)D), where “total” denotes the optional reference to a known target value instead of the mean. The presented Statistical Monitoring by Adaptive RMSTD Tests (SMART) method is primarily intended for the RMSTD metric. (The RMSTD is sometimes alternatively denoted as the entire analytical measuring uncertainty.) Nevertheless, theoretical findings are provided for both RMSTD and RMSD.

The RA has to handle a trade-off between a suitable number of SMC samples to reliably and prospectively verify an in-control condition and to focus on most recent data to detect changes in measuring precision as fast as possible. Particularly in clinical chemistry, the RA has to deal with commonly low-frequent SMC measures (1-2 SMC per day and control sample) and limited reasonable collection periods due to short reagent lifetimes or other frequent system interventions. The presented SMART method has been designed to efficiently evaluate even few amounts of SMC data.

IQC procedures can be combined in multirule concepts [11]. One of the most prominent methods is the “Westgard Sigma Rules” utilizing the Sigma Metric [12]. A detailed and well-structured explanation is given in [13]. The current, improved version is specifically applicable for procedures with different Sigma Metric. However, a procedure with a Sigma Metric of six has a critical systematic error [13] of 4.35-s (i.e., a high potentially acceptable tolerance). In other words, the technically achievable precision of the measurement is distinctly higher than necessary compared to the biological variation, and one could permit a limited variation in accuracy (bias) and/or a certain level of heteroscedasticity. Further, the usually small sample size ($n=20-30$) of regular evaluation periods implies a high risk of significantly underestimated amounts of the parameters mean and standard deviation due to statistical uncertainty (see [14]). Thus, the 3s entry rule of the Westgard Sigma Rules (limit range for single SMC values: $\text{mean} \pm 3 \cdot s$), which is the sole decision rule for high Sigma Metrics, appears unnecessarily strict for procedures with a Sigma Metric of six (and even four). Westgard's multirule concept supports a strictly serial order of decision rules. The SMART method utilizes limit tests in parallel, enabling the possibility to further verify and categorize an out-of-control signal.

Based on a chart of consecutive SMC values, the current standard deviation s_n and unsigned bias (mean inaccuracy) δ_n can be revealed by

$$s_n = \sqrt{\frac{1}{n-1} \cdot \sum_{i=1}^n (y_i - \bar{y})^2} \quad \text{and} \quad \delta_n = |\bar{y} - y_0| \quad (1)$$

(y_i : measured SMC, y_0 : target value, \bar{y} : mean value, n : sample size of SMC chart). Particularly in the case of low-frequent sampling, the parameters s_n and δ_n are not strictly separable because:

(i) The measurement inaccuracy (bias) can vary even within a single chart due to unrecognized changes in environmental or operating conditions. These shifts contribute to the amount of the standard deviation.

(ii) The mean values of arbitrary SMC charts of length n scatter themselves with a dispersion of s/\sqrt{n} . Thus, the standard deviation affects the possible amount of the mean value of a particular chart - leading to an arbitrary contribution to the bias of this chart.

It is therefore suitable to solely focus on the entire analytical measuring uncertainty

$$\text{RMSTD}_n = \sqrt{\frac{1}{n} \cdot \sum_{i=1}^n (y_i - y_0)^2} = \sqrt{\frac{n-1}{n} \cdot s_n^2 + \delta_n^2} \quad (2)$$

The abbreviation RMSTD can either be considered as the root mean square *total* deviation or *target* deviation, depending on the reliability of the target value y_0 . (The phrase “total deviation” implies that y_0 is very close to the true value.) As shown in the right-hand term, the RMSTD can also be expressed as a Pythagorean addition of s_n and δ_n , where the factor $(n-1)/n$ can be neglected for sufficiently large n . However, a separate analysis of standard deviation and bias might nevertheless be useful during fault diagnostics. In addition to the general RMSTD metric, the abbreviation Δ will be used to indicate the “true” RMSTD value that emerges if the statistical uncertainty becomes negligible. Thus, the determination of Δ requires a large data set (see [14] for details).

To indicate out-of-control situations of measuring devices, the IQC usually utilizes at least two maximum permissible deviation limits: one limit intended for each result of an SMC (L_{SMC}) and one limit dedicated to the statistical retrospective analysis. This study utilizes the root mean square total deviation; thus, the statistical limits L_{RMSTD} (for arbitrary n) or L_{Δ} (for very large n) are used here. However, since 2008 the German guideline on quality assurance in medical laboratories (Rili-BAEK) [15] only provides one common, maximum permissible limit for both: single SMC and RA. The limit values in the Rili-BAEK, table B1a-c, column 3 are presented as relative total errors Δ^{rel}

(in per cent). The absolute value of the solely given, maximum permissible total error is given by

$$\Delta_{\max}^{\text{Rili-BAEK}} = \frac{\Delta^{\text{rel}} \cdot y_0}{100\%} \quad (3)$$

(y_0 : target value of the control sample). The current values Δ_{\max} (as prescribed in the Rili-BAEK) are empirically determined and can be treated as approximately equivalent to L_{SMC} ; however, they are distinctly too tolerant if considered as L_{Δ} (see below).

For all analytes not listed in table B1a-c, the self-evaluation of internal laboratory maximum deviation limits is required. These limits are obtained by following equation, utilizing the bias and the t-fold standard deviation obtained during an evaluation period (t is usually set to 3)

$$\Delta_{\max} = \sqrt{\frac{n-1}{n} \cdot t^2 \cdot s_{\text{eval}}^2 + \delta_{\text{eval}}^2} \quad (4)$$

(n: number of SMC values of the evaluation period, s_{eval} : standard deviation during evaluation, δ_{eval} : bias during evaluation). The factor t with $t > 1$ becomes necessary to receive a reasonably tolerant limit for single SMC measures. However, Eq. (4) with $t=3$ may provide a still too restrictive limit for SMC (and probably even for RA) in several situations: (i) underestimated s_{eval} , δ_{eval} due to poor statistics during evaluation period, (ii) measuring techniques with small imprecision but significant inaccuracy, and/or (iii) a high Sigma Metric of the method (usable room for extended tolerance).

As revealed in [16], the implication of the present Rili-BAEK to use the same limit for both the single SMC value and the RA is clearly problematic. In fact, the limits should optimally differ by a factor of about two, where $L_{\text{SMC}} > L_{\Delta}$ (see [16] and Chapter 2.1). This finding and the given statements to handle outliers require a complete revision of the currently prescribed RA of the RiliBAEK [15]. Seeking a more powerful approach, the SMART method has been newly developed and discussed here in detail. SMART is an RMSTD-based method facilitating evaluation of single SMC results as well as on-the-fly statistical monitoring of recent SMC data. It is sufficient to apply SMART with only one prescribed maximum permissible limit. Thus, two versions exist, depending on the use of either L_{SMC} or L_{Δ} as the prescribed limit.

2 Materials and methods

2.1 The relation between optimal limits for SMC and RA

All limits defined in this article are unsigned values specifying a range around the target value $y_0 \pm L_{\text{given}}$. The presented SMART method is intended to provide a common approach for the entire IQC, considering only one prescribed maximum permissible limit. It is based on the finding that an approximately constant relation exists between the optimal maximum permissible limits for one SMC value (L_{SMC}) and for the true RMSTD of a (hypothetically) very large retrospective set of SMC data (L_{Δ}) [16]. Hence, the general parameter λ is defined as the relation factor

$$\lambda = \frac{L_{\text{SMC}}^{\max}}{L_{\Delta}^{\max}} = \frac{\kappa \cdot s_{\max} + \delta_{\max}}{\sqrt{s_{\max}^2 + \delta_{\max}^2}} = \frac{\kappa + \varphi}{\sqrt{1 + \varphi^2}} \quad \text{with} \quad \varphi = \frac{\delta_{\max}}{s_{\max}} \quad (5)$$

(s_{\max} : maximum permissible standard deviation; δ_{\max} : maximum permissible bias; κ : constant expansion factor according to the desired confidence level). The sign Δ (true RMSTD) emphasizes that - assuming a very large considered sample size - there is no remaining statistical uncertainty in the determination of the RMSTD, standard deviation, and bias. In this case of a very large data set, the confidence interval (CI) of Δ becomes negligible, and the limit L_{Δ} can be reduced to be almost equal to the expected exact RMSTD as given by $\Delta^2 = s^2 + \delta^2$.

The factor λ only depends on the ratio between δ_{\max} and s_{\max} . This is shown in Eq. (5) by substitution with the ratio $\varphi = \delta_{\max}/s_{\max}$. Fig. 1 illustrates the mathematical relation between λ and φ for 2 common κ . The factor κ in Eq. (5) can be chosen according to a one-sided CI, due to a generally distinct maximum permissible bias, which is often similar or higher than s_{\max} . A value between 1.96 (97.5% confidence) and 2.33 (99%) is convenient to avoid regular false-positive outliers. For φ -ratios significantly below 1, a two-sided CI is more realistic, which would change the CI level for $\kappa=2.33$ to 98%.

To get a profound idea about the distribution of φ over almost the entire spectrum of analytes in clinical chemistry, Fig. 1 shows frequency histograms of φ -ratios based on data of Rili-BAEK 2003 (column 5/6) [17] and the database of desirable limits by Ricos et al. (version 2014) [18,19]. In the latter case, the considered data are limited to entries, which are referenced by at least two independent sources according to column 3 [18]. This limitation is based on the assumption that the finally considered entries represent validated and established techniques to a greater extent. This “multi-source” data set consists of 150 remaining entries. Except slightly less populated margin areas, the histogram of the multi-source data is similar to the full-data histogram (compared in [16]).

The Rili-BAEK data of 2003 (last official declaration of separate δ_{\max} and s_{\max} permissible limits) represent curated state-of-the-art limits for 90 common analytes at a technological state 15 years ago. Although the limit values are outdated, the ratios are assumed to stay approximately valid, due to limited progress in bias prevention since 2003. Using Eq. (5) the Rili-BAEK data reveal λ values in the range 2.19 ± 0.25 (for $\kappa=2.33$) and 2.0 ± 0.2 (for $\kappa=1.96$).

The desirable maximum bias and standard deviation entries by Ricos et al. (updated 2014) [18,19] were derived from biological variations (see [20,21]). The 95% confidence intervals of λ based on the multi-source dataset are 2.23 ± 0.5 (for $\kappa=2.33$) and 2.0 ± 0.4 (for $\kappa=1.96$). The approach used by Ricos et al. that utilizes biological variations [20,21] is popular. However, the applied formulas are not flexible enough to handle the entire spectrum of analytes, ranging from analytes with extremely small ratios of intra-individual vs. inter-individual biological variation to analytes with dominant within-subject variation (e.g., due to circadian rhythms or prandial state). The analyte-specific desirable maximum limits for bias and standard deviation (based on biological variation) are usually significantly more divergent, compared to curated state-of-the-art limits (see Fig. 1). In particular, the desirable limit for the bias is often too liberal. Hence, statistics were redone under the restriction that the bias is not allowed to be more than two times higher than the standard deviation (accepted ratio $\varphi \leq 2$). This restriction excludes 17 of 150 entries (11.3%). The full ranges of remaining λ 's are then 2.30 ± 0.34 (for $\kappa=2.33$) and 2.05 ± 0.26 (for $\kappa=1.96$). Please mention that a ratio above 2 can also be circumvented by accepting a more tolerant standard deviation.

Particularly with regard to the applied state-of-the-art permissible limits, one can finally conclude that φ values of current measuring procedures are narrow enough to estimate a general λ value for almost every analyte in clinical chemistry. Taking a rather restrictive significance level that only allows about 1-2% false-positive outliers, the general λ value is within

$$\lambda = 2.15 \pm 0.35 \quad . \quad (6)$$

This sufficiently well defined relation between L_{SMC} and L_{Δ} facilitates the explicit definition of only one limit per analyte (either for SMC or long-term RMSTD) for the entire internal quality control.

Because of the special shape of $\lambda(\varphi)$, the given range in Eq. (6) will remain valid even if future progress in clinical chemistry succeeds to significantly reduce measurement biases. If only the standard deviation needs to be monitored, λ would be equal to the κ value (two-sided CI).

2.2 Basics of the Statistical Monitoring by Adaptive RMSTD Tests

The SMART method provides a single formula for both the quality control of single SMC results as well as an on-the-fly statistical monitoring of recent SMC data. Unfortunately, the calculated RMSTD of small SMC series with n samples has an increased uncertainty (due to poor statistics) that needs to be considered in adequate limit definitions. In particular, optimal limits depend on n and exponentially decrease from L_{SMC} (at $n=1$) to L_{Δ} (for $n \rightarrow \infty$). Under consideration of the given factor λ (see Chapter 2.1), it is sufficient to explicitly prescribe just one of the two limits. Assuming a reliable method to determine intermediate limits, the general SMART formula

$$\sqrt{\frac{1}{n} \cdot \sum_{i=1}^n (y_i - y_0)^2} \leq L(\lambda, n) = a(\lambda, n) \cdot L_{\text{given}} \quad (7)$$

utilizes RMSTD tests against variable limits $L(\lambda, n)$, which depend on λ (a constant) and the varying sample sizes n of the considered most recent SMC values. Again, the applied limits range from the higher L_{SMC} ($n=1$) to the distinctly lower L_{Δ} ($n \gg 1$). Thus, a certain limit $L(n)$, used for a series of n samples, becomes increasingly less tolerant at larger sample series. Intermediate limits $L(\lambda, n)$ are expressed by the transition or adaptation function $a(\lambda, n)$ that modifies a predefined limit L_{given} (see next chapters). The curvature of $a(\lambda, n)$ with regard to n has been deeply investigated by two different mathematical approaches as discussed in Chapter 2.3.

After each new SMC measure, Eq. (7) is applied several times considering increasing numbers of previous SMC measures. Thus, the SMART approach performs multiple limit controls, considering the new SMC value ($n=1$) and up to n_{max} latest SMC values of the same control sample. The recommended maximum size of the entire retrospective window (i.e., the maximum number of recognized, most recent SMC values) is $n_{\text{max}}=15$.

Particularly, for each new SMC value, the SMART formula is applied up to 8 times for chart lengths of, e.g., $n=\{1,3,5,7,9,11,13,15\}$ including the retrospectively accumulated SMC values $\{y_i\}$, $\{y_i, y_{i-1}, y_{i-2}\}$, $\{y_i, y_{i-1}, y_{i-2}, y_{i-3}, y_{i-4}\}$, ..., $\{y_i, y_{i-1}, \dots, y_{i-n-1}\}$. Hence, up to 8 potential violations of the n -dependent limit levels might be revealed according to Eq. (7). The final evaluation of all 8 limit tests is done by the definitions of alert levels given in Table 1. Alert levels and an efficient use of SMART during the initial phase (available data below n_{max}) are discussed in Chapter 3.3.

Other variants of SMART settings (the “SMART plan”) are possible. The limit tests do not need to be equidistantly distributed. Nevertheless, it is strongly recommended to keep the first two tests at $n=1$ and $n=3$. To provide an efficient evaluation of SMART results, the number of applied limit tests per SMART run should be at least 6. Another SMART plan of practical interest might be a monitoring window of 19 most recent SMC values and 7 limit tests. These tests could accordingly be done via successive increase of the analyzed data by additional 2-4 retrospective values $n=\{1,3,6,9,12,15,19\}$.

2.3 The curvature of the adaptation function

The considered data set of an RA is often very small on a statistical point of view. It results from a

usually small retrospective time window (to ensure sufficient topicality) and/or a small available count of SMC results due to low-frequent sampling. This has consequences for the applied maximum permissible limits of statistical metrics, which are often defined for “sufficiently long” charts of SMC data (i.e., with limited or no consideration of statistical uncertainties). The minimum amount of collected SMC data to reliably apply such limits is commonly distinctly underestimated (see Chapter 3.1). Regarding SMART we thus need to know, how RMSTD limit levels $L(n)$ have to be increased when they are applied to smaller and smaller sample sizes (due to the increased statistical uncertainty). It is assumed that the limits merge with the limit L_{SMC} at $n=1$. The functional dependency of $L(n)=a(n) \cdot L(n=\infty)$ on n is estimated by two different mathematical approaches outlined in the following chapters. These approaches are fully explained and derived in [14]. Both approaches utilize a rather tolerant CI of 95%. The author recommends limits based on a relatively narrow CI like 95% in combination with a constant small addition to all evaluated parameters. The addition might be in the order of the difference in maximum amplitudes (at $n=2$) between the CI-99% and CI-95% functions. Please also note that the final scale (i.e. range of amplitudes) of SMART limits is actually only based on λ .

2.3.1 The maximum error propagation of statistical uncertainties

The statistical limit $L_{RMSTD}(n)$ must be equal or higher than the RMSTD of any possible in-control SMC data set with n considered values. The maximum expected RMSTD value of a limited data set can be approximated by the upper limit of the confidence interval (CI_{Δ}^{up}) of the RMSTD metric. In our case the CI_{Δ}^{up} of the closely in-control true RMSTD value. It is therefore beneficial to estimate the CI_{Δ}^{up} for small sample sizes n , which will finally provide inference with regard to the curvature of the adaptation function $a(\lambda, n)$ of SMART.

In [14], a rather straightforward approach is presented to determine the true RMSTD value and to approximate the CI_{Δ}^{up} of the RMSTD metric. According to [14] the final function of CI_{Δ}^{up} with regard to the variable n results in

$$CI_{\Delta}^{up} = \frac{S}{\sqrt{f+v^2}} \cdot \left[v^2 + \frac{f}{2} \left(1 + \frac{\chi_{n-1;0.95}^2}{n-1} \right) + \frac{v \cdot z_{0.95}}{\sqrt{n}} \right] \quad \text{where} \quad v = \frac{\delta_{mean}}{S} \quad \text{and} \quad f = \frac{n-1}{n} \quad (8)$$

(n : number of considered SMC values, δ_{mean} : mean bias (unsigned difference between the overall mean and the reference value), S : overall standard deviation, χ^2 and z : quantiles of the chi-squared and normal distributions). The parameters δ_{mean} and S may be evaluated by a big-data multi-chart analysis of the measuring system as described in [14].

It is important to mention that the ratio $v=\delta_{mean}/S$ is not directly comparable to ϕ , the ratio of the maximum permissible single-chart values δ_{max} and s_{max} given in Eq. (5). The individual biases of single SMC charts vary according to device-specific, operational, and environmental conditions with a scatter parameter S_{δ} . The procedure, presented in [14], includes SMC data from several SMC charts. In the overall statistics, the variability between biases of individual charts is thus part of the overall standard deviation term S . This implicitly included variation of biases can be treated as normal-distributed. Pure short-term dispersion (imprecision) and the variation of biases are further sufficiently independent; thus, the overall variance is the sum of both variances $S^2=S_{imp}^2+S_{\delta}^2$. The remaining mean bias δ_{mean} is just the difference between the overall mean value and the target value. If the target value is a pre-evaluated nominal value, δ_{mean} is expected to be very small in relation to S . However, the amount of δ_{mean} might be still significant, if the target value was revealed by a more precise reference method. In general, the ratio $v=\delta_{mean}/S$ is expected to be clearly non-zero but distinctly smaller than the ratio ϕ (defined in Chapter 2.1)

$$0 < v < \varphi \quad \text{or} \quad 0 < \frac{\delta_{\text{mean}}}{S} < \frac{\delta_{\text{max}}}{s_{\text{max}}} \quad . \quad (9)$$

With regard to common relations between δ_{max} and s_{max} as presented in Fig. 1, a proper value for v is approx. 0.6 with an assumed maximum uncertainty of about ± 0.5 . Further, the decision to apply a one- or two-sided 95% CI for the parameter $z_{95\%}$ also depends on v . If the amount of δ_{mean} is almost as high as S (or even higher), a one-sided CI is more suitable than a two-sided CI. If one apply a smooth transition between two-sided ($v=0$, $z=1.96$) and one-sided ($v=1$, $z=1.645$) statistics, the dependency of CI_{Δ}^{up} on such v - z combinations is relatively small, with a broad central maximum at about $v=0.3$ - 0.5 [14]. The combination of $v=0.6$ and $z_{95\%}=1.7$ (or $z_{99\%}=2.4$) is considered as a feasible representative choice for all relevant v - z combinations.

As already mentioned, a limit function for RMSTD values must be equal (or higher) than the upper CI limit of Δ . To focus on the curvature of CI_{Δ}^{up} that only depends on the ratio between δ_{mean} and S , the CI_{Δ}^{up} function is normalized by its value at infinite n . At $n \rightarrow \infty$ all statistical uncertainties can be neglected and CI_{Δ}^{up} becomes equal to the true RMSTD: $CI_{\Delta}^{\text{up}}(\infty)=\Delta_{\infty}=S \cdot \sqrt{1+v^2}$. Thus, the relative limit function is finally

$$L_{\text{rel}}^{\text{RMSTD}}(n) = \frac{CI_{\Delta}^{\text{up}}(n)}{CI_{\Delta}^{\text{up}}(\infty)} = \frac{v^2 + \frac{f}{2} \left(1 + \frac{\chi_{n-1;0.95}^2}{n-1} \right) + \frac{v \cdot z_{0.95}}{\sqrt{n}}}{\sqrt{(f+v^2)(1+v^2)}} \quad (10)$$

(n : sample size; $f=(n-1)/n$; $v=\delta_{\text{mean}}/S$; χ^2 and z : 95%-quantiles of the chi-squared and normal distributions).

The given mathematical approach is intended to estimate the statistical uncertainty of an RMSTD of small series. However, the presented model becomes itself distinctly uncertain for any n below about 6, due to (i) the pragmatic concept of the degrees of freedom (esp. correction factor f) and (ii) to the fact that the underlying Taylor-series development is limited to the first degree, thus less intended for large uncertainties. Therefore, an alternative mathematical approach is introduced in the next chapter to further prove the revealed curvature.

2.3.2 The Multidimensional Confidence Interval

To further validate the curvature of the adjustment of SMART limits with respect to small sample sizes, a second approach has been derived. This alternative theory extends the CI of a single measure to a common CI of a series of n measures, while keeping the overall confidence level constant (at, e.g., 95%). It will be denoted as the Multi-Dimensional Confidence Interval (MDCI). The approach requires two general assumptions: (i) the total measuring uncertainty is purely normal-distributed around a constant mean and (ii) all consecutively measured results are uncorrelated (i.e., independent measures). The MDCI finally leads to the upper limit function L° of the root mean square metric. Due to (i) the MDCI theory neglects the uncertainty and variability of a bias; thus, it only covers the RMSD (resp. empirical standard deviation) metric.

The MDCI theory originates from the calculation of the two-sided CI of a normal-distributed and standardized variable by integration of the Gaussian probability density (GPD) function. Applying the known statistical parameters S (overall standard deviation) and δ_{mean} (mean bias), revealed by a sufficiently large evaluation set of SMC values (see [14]), each measured SMC value can directly be standardized without loss of information. The MDCI theory is therefore simplified to realizations of the standard Gaussian distribution ($\text{RMSD}(n \rightarrow \infty)=1$).

The combined probability of n independent events (occurring sequentially or in-concert/multivariate) is the product of the single-event probabilities $P(1,2,\dots,n)=p_1 \cdot p_2 \cdot \dots \cdot p_n$. If the single p -values are

extended to integrals over one-dimensional GPD distributions, the combined probability P leads to an n-dimensional GPD distribution. Thus, the total probability of a particular sequence of n standardized control measures can be expressed by this n-dimensional GPD distribution, where each dimension represents one control measure of the SMC sample series. Any n-dimensional GPD distribution is rotationally invariant around zero, and can therefore be expressed as a radial function. Here, we are only interested in isolevel/equipotential spherical hypersurfaces within the spanned space. This is for example the spherical partitioning surface of a certain common confidence limit (z) represented by a constant radius. To obtain the (two-sided) 95% confidence limit $z_{95}(n)$, the normalized radial density function has to be integrated from 0 to $z_{95}(n)$

$$P = 0.95 = \frac{2^{\left(1-\frac{n}{2}\right)}}{\Gamma\left(\frac{n}{2}\right)} \cdot \int_0^{z_{95}(n)} r^{(n-1)} \cdot \exp\left(-\frac{1}{2}r^2\right) \cdot dr \quad (11)$$

(n: sample size or dimension; r: radius of the spherical hypersurface; Γ : Gamma function). Thus, the radial integration limit $z_{95}(n)$ covers 95% of the hypervolume spanned by the multidimensional GPD distribution. This slightly more advanced theory has been fully explained in [14], including a complete derivation and validation of Eq. (11).

Obviously, z_{95} is 1.96 at $n=1$. For higher n, the limit $z_{95}(n)$ increases according to Eq. (11) and slowly converges towards the square root function of n. According to [14], the limit $z_{95}(n)$ represents the Pythagorean addition of a series of single confidence limits ensuring a constant overall significance level of 5%. The limit can therefore be utilized to obtain the maximum acceptable RMSD (95% confidence) of a sequence of n realizations. To obtain such a function of adequate upper RMSD limits $L^\circ(n)$ of n standardized values, $z_{95}(n)$ can directly be implemented into Eq. (2) (with $y_0=0$) leading to

$$L_{\text{RMSD}}^\circ(n) = \sqrt{\frac{1}{n} \sum_{i=1}^n (y_i^\circ)^2} = \frac{z_{95}(n)}{\sqrt{n}} \quad (12)$$

($^\circ$ denotes the RMSD limit of N(0,1)-distributed samples). $L^\circ(n)$ goes from 1.96 ($n=1$) to 1 (for $n \rightarrow \infty$) as drawn in Fig. 2A. The curvature of $L^\circ(n)$ is assumed to be directly comparable (except a different scale) to the adaptation function $a(\lambda, n)$ of SMART as defined in Eqs. (7) and (13). The radial limit $z_p(n)$ is also equivalent to the square root of $\chi^2_p(n)$. Relevant metrics ($\Gamma(n/2)$ and pairs of $z(n)$, $L^\circ(n)$ for the 3 two-sided CI's 95%, 97,5%, and 99%) for all $n \leq 40$ are provided in [14].

2.4 SMART utilizing the limit of the expected long-term RMSTD

The “true” RMSTD, which emerges by a drastically extended sample size ($n \gg 100$), can be revealed rather precisely by Eq. (2) and the simple evaluation method described in [14]. This method evaluates the necessary parameters s and δ (together with a post-processing of data) with high precision by a Gaussian fit of the overall histogram of multiple long SMC charts. Thus, the maximum permissible statistical limit L_Δ for a (hypothetically) very long SMC chart can be set rather strict. Only a small additional amount (i.e., permissible bonus) is sufficient to provide a robust definition of the general L_Δ limit per analyte. Such a moderate bonus facilitates some tolerance for heteroscedasticity or baseline drifts. This SMART variant, which adapts the given L_Δ to small SMC charts, is recommended due to the high reliability of large-scale statistics used to

determine L_{Δ} .

As further discussed in Chapter 3.1, the given mathematical analyses to approximate the expected curvature of $a(\lambda, n)$ lead to the following final equation of this SMART variant that refers to L_{Δ}

$$\sqrt{\frac{1}{n} \cdot \sum_{i=1}^n (y_i - y_0)^2} \leq a(\lambda, n) \cdot L_{\Delta} \quad \text{with}$$

$$a(\lambda, n) = 1 + (\lambda - 1) \cdot n^{-0.45} \quad . \quad (13)$$

The adaptation function $a(\lambda, n)$ modifies the long-term limit L_{Δ} with regard to smaller and smaller sample sizes n . It implicitly goes towards the higher limit L_{SMC} at $n=1$. A proper general value for the constant λ can be obtained from Eq. (6). To be valid for (almost) all analytes in clinical chemistry, a λ value near the upper limit of the given uncertainty range of λ is recommended (i.e., λ closely below 2.5).

2.5 SMART utilizing the limit dedicated for single measures (L_{SMC})

The SMART method can alternatively be provided with sole regard to the maximum permissible limit L_{SMC} intended for single measurements of control samples. Such limits are often the only statutorily prescribed information in guidelines. For example, the limits given in the German guideline (Rili-BAEK, table B1a-c column 3, in relative values [15]) can be considered as sole L_{SMC} data [16]. In contrast to the determination of L_{Δ} , the definition of L_{SMC} is usually done empirically at a certain significance level and/or related to a fraction of the biological variation of the analyte [20,21]. The determination of L_{SMC} might also base on Eq. (4), where s_{eval} and δ_{eval} could be revealed by a Gaussian fit of the overall histogram of evaluation data. However, Eq. (4) yields too strict limits in special cases (small imprecision but distinct inaccuracy). Depending on the technical precision of the examined measuring process in relation to the medical needs (quantified by, e.g., the Sigma Metric [13]), a small addition could be permitted to its L_{SMC} .

Running SMART, the applied limits decrease with higher considered sample sizes n from L_{SMC} ($n=1$) towards L_{Δ} ($n \gg 1$). Here, L_{Δ} is implicitly given by the constant λ according to Eq. (6). The preliminary suggestion in [16] to apply a natural exponential function for $a(n)$ was based on the assumption that the uncertainty of the RMSTD at a sample size $n=15$ has already reached a value near the long-term level with just a small remaining slope. However, one of the main new conclusions, presented in Chapter 3.1, reveals that the remaining offset and slope are still very significant at $n=15$ compared to $n \rightarrow \infty$. The curvature of a natural exponential function appears now to be distinctly too steep in the range $n=1-15$ with the clear risk to cause false-positive limit overruns at higher sample sizes.

The newly revealed functional dependency of $a(\lambda, n)$ is strongly justified by the two presented mathematical approaches (Chapter 2.3). The final equation of SMART utilizing L_{SMC} and dedicated to the range $n=1-15$ is given by

$$\sqrt{\frac{1}{n} \cdot \sum_{i=1}^n (y_i - y_0)^2} \leq \frac{a(\lambda, n)}{\lambda} \cdot L_{SMC} \quad \text{with}$$

$$a(\lambda, n) = 1 + (\lambda - 1) \cdot n^{-0.45} \quad . \quad (14)$$

The choice of λ depends on how tolerant the given limit L_{SMC} has been defined. Assuming a rather

restrictive value of L_{SMC} , λ should be chosen near its lower boundary given in Eq. (6) to prevent false-positive results for (almost) all kinds of analytes (i.e., $\lambda=1.8$).

3 Results and discussion

3.1 The uncertainty of the RMSTD due to small sample sizes

In Chapter 2.3 and [14], two mathematical approaches were derived to quantify the increased statistical uncertainty of RMSTD results at relatively small sample sizes. The quantification of this uncertainty is important to optimally adapt the applied IQC limits for RMSTD results of short SMC charts (especially for $n < 50$). The derived approaches are denoted as CI_{Δ}^{up} (Chapter 2.3.1) and MDCI (Chapter 2.3.2). The first approach refers to the entire RMSTD (inclusive bias); however, it lacks precision below about $n < 6$. The second approach (MDCI) represents a more fundamental theory, but it neglects a systematic bias with respect to a target value (just RMSD). In the comparable case of zero bias ($v=0$ in Eq. (10)) and a CI of 95%, the final functions of both approaches are in very good agreement as demonstrated in [14].

The most important conclusion regards to the functions of optimal RMSD/RMSTD limits depending on the considered sample size. Figure 2 summarizes the revealed curves of both mathematical approaches, which are (2A,2C) the standardized RMSD limit $L^{\circ}(n)$ of MDCI utilizing Eq. (12) and (2B,2C) the relative RMSTD limit (L_{rel}^{RMSTD}) of CI_{Δ}^{up} utilizing Eq. (10). The graphs 2A and 2B represent a relatively moderate increase of the limits by using a CI of 95%, which is recommended in combination with a small constant addition to the prescribed value of the IQC limit L_{SMC} or L_{Δ} . The limit functions in 2C provide more tolerance due to a CI of 99%. Please note that - along with the different CI's - the type of error propagation of the CI_{Δ}^{up} approach has also been changed from maximum error propagation (CI-95%) to Gaussian error propagation (CI-99%). The alternative equation of L_{rel}^{RMSTD} based on Gaussian error propagation can be found in the appendix of [14]. In this study, L_{rel}^{RMSTD} has always been applied with the reference set $v=0.6$ and $z_{95\%}=1.7 / z_{99\%}=2.4$, suitable for common analytes in clinical chemistry (see Chapter 2.3.1 and [14]). In Fig. 2B and 2C the intrinsic uncertainty of the CI_{Δ}^{up} approach with regard to the concept of the degrees of freedom of the χ^2 -term (discussed in [14]) is visualized by an upper and lower boundary (gray corridor) flanking the expected shape of L_{rel}^{RMSTD} . The upper boundary utilizes the given Eq. (10), where the lower boundary represents Eq. (10) with a substitution of the term $\chi_{(n-1)}^2/(n-1)$ by χ_n^2/n .

The curves in Fig. 2 are fitted separately with the same fit function of the type $F(n)=1+C \cdot n^{-0.45}$ with a best-matching scaling parameter C . All fits in Fig. 2 (red lines) clearly show that the curvatures of the two different mathematical approaches are very similar. Only the amplitudes differ by up to 20% (at CI-95%), which can be dedicated to different basic assumptions. SMART uses an alternative (independent) concept for scaling under consideration of the parameter λ (see Chapter 2.1). Thus, only the curvatures of the limit functions are relevant in this study. Nevertheless, the recommended range for λ (1.8-2.5) agrees well with the (partially extrapolated) amplitudes at $n=1$ and CI-95% of both mathematical approaches. Fig. 2 confirms that the type of the fit function $F(n)=1+C \cdot n^{-0.45}$ is very convincing. The exponent (-0.45) can be defined rather precisely. Curvatures with exponents outside the range (-0.46,-0.43) are clearly less matching. An additional feature of this fit function is the ensured, correct long-term limit of one. The function has been finally applied as template for the adaptation function $a(\lambda,n)$ of the SMART method (see Chapters 2.4 and 2.5). The

fit function was optimized for the range $n \leq 20$. If an extended monitoring window of the SMART method is intended (i.e., distinctly higher than $n_{\max}=20$), one might re-optimize the adaptation function $a(\lambda, n)$ by refitting Eqs. (10) and (12) with a variable exponent and over the extended range of n . Although, the best fit to an extended MDCI-95% function ($n=50$) remains very similar: $1+0.986 \cdot n^{-0.452}$ with an $R^2=0.9981$. (In the case of MDCI-99%, the best fit is $1+1.5855 \cdot n^{-0.479}$ with $R^2=0.9997$). The convincing consensus among both mathematical approaches and the well-matching fit function provide a very reliable basis for the presented SMART method.

The second conclusion regards to the remaining distinct amount of statistical uncertainty in the determination of root mean square metrics based on sample sizes up to about $n=50$. This uncertainty needs to be considered in limit definitions applied to limited retrospective IQC data. At $n=2$ the uncertainty (or error) in RMSTD determination can reach about 100% of the true RMSTD value that is exactly obtainable by very large n only. The (hypothetical) large-scale limit L_{Δ} can be chosen close to this true RMSTD value. The findings also confirm the assumption that the upper limits of RMSD/RMSTD results must increase at fewer n and finally culminate in the limit for single control measures L_{SMC} at $n=1$. According to Chapter 2.1, the ratio $L_{\text{SMC}} / L_{\Delta}$ of the maximally diverging limits is defined in this study by λ , which lies in the range 1.8-2.5. The fit function $F(n)$ and the equivalent adaptation function $a(\lambda, n)$ of SMART have been utilized to draw the course of optimal intermediate limits between L_{SMC} and L_{Δ} .

The curvature of $a(\lambda, n)$ or $F(n)$ directly provides the relative amount of the statistical uncertainty at any n by about

$$\frac{a(\lambda, n) - a(\lambda, \infty)}{a(\lambda, 1) - a(\lambda, \infty)} \cdot 100\% = n^{-0.45} \cdot 100\% \quad , \quad (15)$$

where $a(\lambda, \infty)=1$. Thus, 30% of the decrease of the adaptation function $a(\lambda, n)$ from λ (at $n=1$) towards 1 (for $n \rightarrow \infty$) still remains at $n=15$. In other words, the effective range between the maximally diverging applied SMART limits (for $n=1$ resp. $n=15$) is just 70% of the entire value of λ . Nevertheless, a monitoring window of $n=15$ seems to be an optimal trade-off to ensure a fast response to suspicious IQC states. If a larger monitoring window of SMART is preferred, the remaining statistical uncertainties at $n=20$ and $n=30$ would be 26% and 21.6%, respectively.

3.2 Final remarks on the SMART method

The novel SMART method is especially intended to monitor a limited available number of control measures. However, the monitored window of most recent control measures should not be significantly less than 15 values. During the initial phase, SMART can nevertheless be applied to a smaller data set without modification. The method is most efficient utilizing control samples with known target values. However, a feasible target value could also be self-determined during a pre-analytical evaluation period.

Although the underlying mathematical approaches (Chapter 2.3) may appear complex, the SMART method alone is straightforward. At each application, the SMART method evaluates up to 8 limit tests of the RMSTD values of retrospective SMC charts with increasing considered numbers of recent control measures. The applied limits of the RMSTD results become more and more strict, facilitated by the increasing statistical significance of longer sample series. The limits converge from the tolerant L_{SMC} towards the stricter L_{Δ} . Thus, SMART can even quickly respond to suspicious shifts or trends of recent SMC values that are still within the $\pm L_{\text{SMC}}$ limit around the target value.

One of the main advantages of SMART emerges from the feature that only one prescribed maximum permissible limit per analyte is sufficient to realize the entire IQC - including a fast detection of critical baseline trends as well as single critical outliers. This prescribed limit is either L_{SMC} or L_{Δ} , whereas the undefined co-limit is implicitly considered by λ . Hence, the only other necessary parameter is λ , which lies within the range 1.8-2.5 for (almost) all present analytes in clinical chemistry (see Chapter 2.1). Please mention that a suitable choice of λ depends on the preferred variant of SMART. A value of λ near the lower boundary ($\lambda=1.8$) is recommended for SMART utilizing L_{SMC} and near the upper boundary ($\lambda=2.5$) for SMART utilizing L_{Δ} , respectively. The design of the method provides a nuanced interpretation of outliers by alert levels. Thus, the applied prescribed limit for an analyte can be chosen rather strict. It is, however, reasonable to grant a small addition (“bonus”) to further account for some tolerance in the IQC procedure (i.e., permissible heteroscedasticity and baseline drift). The Sigma Metric [13] of the particular measuring procedure may facilitate the decision on the quantity of this addition.

As explained in Chapter 2.2, the recommended number of limit tests is 8 for a monitoring window of $n=15$ recent SMC values. This SMART plan would simultaneously evaluate 8 retrospective sample series with sizes of $n=\{1,3,5,7,9,11,13,15\}$ (applied after each new SMC measure). In the case of just 6 tests, recommended sample sizes of RMSTD tests would be $n=\{1,3,6,9,12,15\}$ accordingly. In principle, a default number between 6 and 8 limit tests appears optimal. Test frequencies outside this range may require modifications of the definitions of alert levels given in the next chapter. SMART plans, which utilize a retrospective monitoring window of more than 20 SMC values and at least 8 limit tests, should benefit from the optional scoring scheme introduced in Chapter 3.4.

SMART is highly recommended as the new default IQC procedure of the German Rili-BAEK. A change would solve all of the distinct issues of the present mandatory IQC version as discussed in [16]. Further, the current concept of an RA, which is solely applied at the ends of consecutive data-collection periods of 1-3 months, would become obsolete. It would be replaced by the sliding monitoring window of SMART.

3.3 The alert levels of SMART

The basic idea behind the definition of alert levels is that a moderate outlier usually breaks just one limit, whereas one distinct outlier breaks multiple SMART limits at once. Particularly, the newest SMC value will be considered in each of the applied limit tests; hence, it might solely cause multiple limit overruns during one call of SMART. The extended monitoring of SMC data by multiple limit tests thus allows a nuanced interpretation of outliers. In fact, sparse and moderate overruns of limits are indeed “welcome” as early indicators, and the SMART limits can be defined rather strict.

Moreover, SMART can detect and evaluate a sequence of recent SMC measures that are still below the L_{SMC} limit - but finally fail to meet one or more of the stricter subsequent limits. Nevertheless, the first limit test (L_{SMC}), just applied to the current measure, is generally most important, and it has to be more prominently assessed than all other limit tests.

At the end of each call of SMART, the results of all limit tests are processed to reveal the present alert state of the IQC. These alert states range from pre-failure warnings till critical alerts. Table 1 provides a suitable maximum number of 7 distinguishable state levels for an IQC using just one control material. These gradual levels can be used to specifically define preventive actions and detailed instructions for operators.

If two control samples are used and analyzed simultaneously, even more robust IQC state evaluations of the monitored system are possible. Table 2 provides level definitions and suggested

instructions for an IQC with two control samples and 6-8 limit tests.

If an alert level of 4 or higher was reached (and the causing problem has been solved), a restart of SMART by rejecting of all previous SMC data becomes necessary. During the new initial phase one might treat the missing retrospective SMC values within the monitoring window (default $n_{\max}=15$) as being equal to the target value. To ensure an efficient IQC even at the very beginning, it is highly recommended to start SMART with a predefined series of $n_{\max}-1$ repeats of a better suited value y_{dummy} instead. An adequate value of y_{dummy} is simply the sum of the target value and the strictest limit, which is L_{Δ} , thus $y_{\text{dummy}}=y_0+L_{\Delta}$ or $y_{\text{dummy}}=y_0+L_{\text{SMC}}/\lambda$.

How to deal with outliers? Outliers are important state indicators and statistical elements. They should never be ignored even if the SMC measure was directly repeated. Anyway, if an outlier has clearly been dedicated to an apparent exceptional mistake or a compromised control sample; this particular outlier should be rejected. Further, in response to an outlier, the number of permitted direct retries of an SMC has to be strictly limited to avoid repeated measures until a putatively acceptable result is achieved. If nothing has really been changed on the system (except cleaning or recalibration), just one direct repeat of an SMC is maximally permissible.

The optimal number of limit tests, the alert levels, and the suggested instructions were defined by theoretical thinking. Own practical experience during long-term application may lead to further optimizations of these settings.

3.4 An optional score for extended monitoring windows

In cases of monitoring windows considering more than about 20 most recent SMC values ($N=n_{\max}$, $N>20$), it might become beneficial to additionally account for the recentness of a failed limit test. This can be achieved by a weighting of limit tests in terms of topicality of the evaluated data. A suitable weight w_n is equal to the inverse square root of n , which is the sample size of a particular RMSTD-limit test (with considered retrospective SMC values $1, \dots, n$). The number of limit tests per application of SMART should be at least 8.

The weights of failed limit tests yield a score. The score consists of two numbers due to the extraordinarily prominent single-value limit test for $n=1$. The first ($S_{n=1}$) is an integer, which defaults to zero but increases by 1 for a failed test at $n=1$. The second score ($S_{n>1}$) is the normalized sum of the weights of all failed limit tests (except the first one at $n=1$):

$$\text{Score} = S_{n=1} | S_{n>1} \quad \text{with } S_{n=1} \in \{0,1\} \quad \text{and} \quad S_{n>1} = \frac{\sum_{n=2}^N w_n}{\sum_{n=2}^N \frac{1}{\sqrt{n}}}$$

$$w_n = \frac{1}{\sqrt{n}} \quad \text{for } \sqrt{\frac{1}{n} \sum_{i=1}^n (y_i - y_0)^2} > L_n^{\text{SMART}} \quad ; \quad \text{else } w_n = 0 \quad (16)$$

The score is also applicable and recommended for the parallel use of two control samples. Here, the first score can reach two. Regarding $S_{n>1}$, the weights of each control sample are summed up separately; though, the weights of one control sample are considered to be negative ($S_{n>1}$ with minus sign). Table 3 provides suggested definitions of alert levels based on the scoring scheme for one of the smallest SMART plans suitable for scoring.

4 Conclusion

The study quantitatively revealed that a significant statistical uncertainty in the determination of RMSTD or RMSD metrics must be considered, if the sample size (n) is below about 50. Thus, applied statistical IQC limits need to be adapted according to the size of monitored data. A transition curve of optimal IQC limits is given, which connects the maximum permissible limit for single measures ($n=1$) with the RMSTD limit yielded by large-scale statistics ($n \rightarrow \infty$).

The findings led to the development of the novel SMART method intended for small monitoring windows. The method manages the entire IQC with only one mandatory limit statement per analyte. SMART can distinguish between up to 7 alert levels due to multiple limit tests. If a retrospective monitoring window of more than 20 values is preferred, an optional weighting of failed single tests can be applied to further improve the topicality of potential critical alert levels.

Research Funding: This research did not receive any specific grant from funding agencies in the public, commercial, or not-for-profit sectors.

Competing interests: The author declares no potential conflicts of interest with respect to the research, conclusions, authorship, and/or publication of this article.

References

- [1] S. Lester, K.E. Harr, M. Rishniw, P. Pion, Current quality assurance concepts and considerations for quality control of in-clinic biochemistry testing, *J. Am. Vet. Med. Assoc.* 242 (2013) 182-192. <https://doi.org/10.2460/javma.242.2.182>.
- [2] D.C. Montgomery, *Introduction to statistical quality control*. seventh ed., Wiley Press, New York, 2012.
- [3] A. Snoussi, M. el Ghourabi, M. Limam, On SPC for short run autocorrelated data. *Commun. Stat. - Simul. Comput.* 34 (2005) 219-234. <https://doi.org/10.1081/SAC-200047110>.
- [4] W.H. Woodall, D.C. Montgomery, Research issues and ideas in statistical process control, *J. Qual. Technol.* 31 (1999) 376-386. <https://doi.org/10.1080/00224065.1999.11979944>.
- [5] R.J. Howarth, Quality control charting for the analytical laboratory part 1: univariate methods, *Analyst* 120 (1995) 1851-1873. <https://doi.org/10.1039/an9952001851>.
- [6] Westgard Homepage, CLIA statements, <https://www.westgard.com/clia-a-quality.htm> (accessed March 2020).
- [7] T. Wang, S. Huang. An adaptive multivariate CUSUM control chart for signaling a range of location shifts, *Commun. Stat. - Theory Methods* 45 (2016) 4673-4691. <https://doi.org/10.1080/03610926.2014.927494>.
- [8] M. Riaz, N. Abbas, R.J.M.M. Does, Improving the performance of CUSUM charts, *Qual. Reliab. Engng. Int.* 27 (2011) 415-424. <https://doi.org/10.1002/qre.1124>.
- [9] J.O. Westgard, T. Groth, T. Aronsson, C.-H. de Verdier, Combined Shewart-CUSUM control chart for improved quality control in clinical chemistry, *Clin. Chem.* 23 (1977) 1881-1887.
- [10] A.S. Neubauer, The EWMA control chart: properties and comparison with other quality-control procedures by computer simulation, *Clin. Chem.* 43 (1997) 594-601. <https://doi.org/10.1093/clinchem/43.4.594>.

- [11] J.O. Westgard, Rules and multirules, <http://www.westgard.com/westgard-rules-and-multirules.htm> (accessed Mar 2020).
- [12] S. Westgard, H. Bayat, J.O. Westgard, Analytical sigma metrics: a review of six sigma implementation tools for medical laboratories, *Biochem. Med. (Zagreb)* 28 (2018) 1-12. <https://doi.org/10.11613/BM.2018.020502>.
- [13] Six sigma-based quality control, Learning guide, Abbott Diagnostics, https://www.corelaboratory.abbott/sal/learningGuide/ADD-00058819_Six_Sigma_Learning_Guide.pdf (accessed Mar 2020).
- [14] C. Beier, Impact of small sample sizes to the internal quality control: statistical uncertainties in the determination of root mean square deviations with respect to the sample mean (RMSD) or to a target value (RMSTD), medRxiv (submission expected in Oct 2020).
- [15] Revision of the “Guideline of the German Medical Association on Quality Assurance in Medical Laboratory Examinations – Rili-BAEK” (unauthorized translation), *J. Lab. Med.* 39 (2015) 26-69. <https://doi.org/10.1515/labmed-2014-0046>.
- [16] C. Beier, Recommended changes of the current version of the German Rili-BAEK, *J. Lab. Med.* 43 (2019) 225-233. <https://doi.org/10.1515/labmed-2019-0097>.
- [17] Richtlinie der Bundesärztekammer zur Qualitätssicherung labormedizinischer Untersuchungen, *Dt. Aerzteblatt* 100 (2003) A3335-A3338.
- [18] Desirable Biological Variation Database specifications, <https://www.westgard.com/biodatabase1.htm> (accessed Jan 2019).
- [19] EFLM, https://biologicalvariation.eu/bv_specifications/measurand (accessed May 2019).
- [20] S.S. Biswas, M. Bindra, V. Jain, P. Gokhale, Evaluation of imprecision, bias and total error of clinical chemistry analysers, *Ind. J. Clin. Biochem.* 30 (2015) 104-108. <https://doi.org/10.1007/s12291-014-0448-y>.
- [21] C.G. Fraser, *Biological variation: from principles to practice*, AACC Press, Washington DC, 2001, 1-151.

Table 1: Alert levels of SMART

Level	Indication	Description
0	In control	No violation of limits
1	Trend warning	Up to two limit violations except at n=1
2	Suspicious measure	Outlier at n=1 but no other limit violation
3	Problematic measure	Outlier at n=1 and one further violation
4	Statistically out-of-control	More than two limit violations except at n=1
5	Fully out-of-control	Outlier at n=1 and at least two further violations
6	Deprecate lot/device	Exceeding a given maximum permissible number of level-4 or level-5 events within last, e.g., 100 days of operation

Table 2: Level definitions and suggested instructions for an IQC with two simultaneously used control samples (CS)

Level	Condition	Suggested instructions
0	No violations of limits	Proceed
1	Only one CS with an outlier at n=1 and no other violations (single warning)	Visual inspections of devices, utilities, and CS
1	Up to two limit violations except at n=1 of one or both CS (trend warning)	Exchange of CS and probably other expendable items; extended backup storage of measured patient samples (if reasonable)
2	Only one CS with an outlier at n=1 and up to one other violation in each CS	Educated visual and logged inspections; new CS aliquot; repeat of SMC; further actions might be analyt-specific according to medical relevance, etc.
3	Both CS with an outlier at n=1 and up to one further violation in each CS	Educated visual and logged inspections; cleaning; recalibration; new CS aliquots; repeat of both SMC
4	Both CS with more than two limit violations each; but no outliers at n=1	Detailed inspection including dis-/reassembly and cleaning of units; exchange of CS and reagents; replacement of exchangeable items or preventive maintenance; recalibration and repeat of both SMC; (inspection of all utility devices; contact lot manufacturer)
5	An outlier at n=1 in combination with at least two further limit violations of one or both CS	Detailed inspection including dis-/reassembly and cleaning of units; exchange of CS and reagents; replacement of exchangeable units or preventive maintenance; recalibration and repeat of both SMC; (inspection of all utility devices; contact lot manufacturer)
6	Exceeding a predefined maximum number of level-4 or level-5 events within, e.g., 100 days of operation	Reportable incident; re-evaluation of all performance metrics of the device/method

Table 3: Definitions of alert levels for two concurrently used control samples utilizing the optional scoring scheme. The dedicated SMART plan is: $n_{\max}=21$ with 8 limit tests at $n=\{1,3,6,9,12,15,18,21\}$.

Level	S(n=1)	S(n>1)
0	0	0
1	1	0
1	0	[-0.3,0.3]
2	1	[-0.24,0.24]
3	2	[-0.24,0.24]
4	0	<-0.3 or >0.3
5	1 or 2	<-0.24 or >0.24
6	see Table 2	see Table 2

The suggested ranges are approximately consistent with the “condition” statements given in Table 2. The value 0.24 is slightly below the normalized weight of the second test ($n=3$), whereas 0.3 has been set to be slightly smaller than the normalized sum of the three smallest test weights (for $n=\{15,18,21\}$).

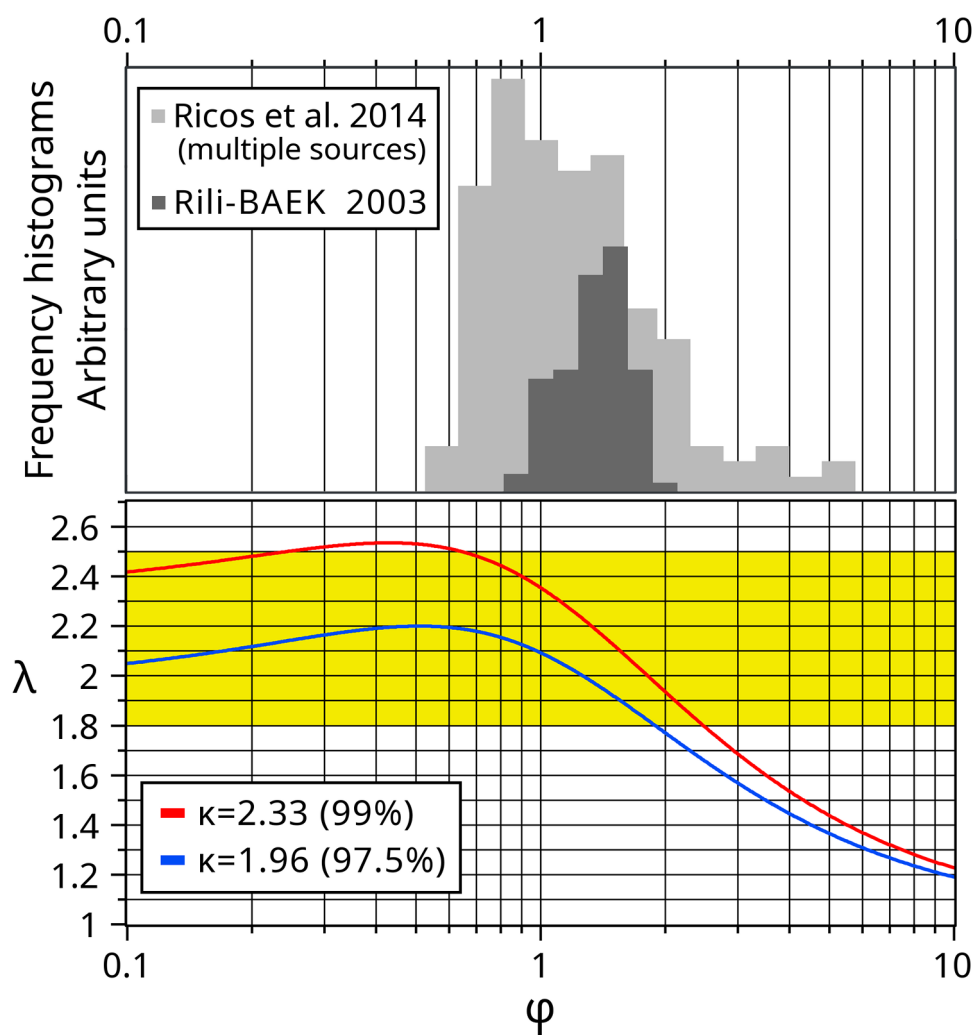


Figure 1: Common relations between maximum permissible bias δ_{\max} and standard deviation s_{\max} in clinical chemistry are utilized to approximate a general value of λ . (A) Frequency histograms of ratios $\varphi = \delta_{\max} / s_{\max}$ of medical analytes taken from Ricos et al. 2014 (light gray, 150 entries, mean=1.1) and the German Rili-BAEK 2003 (dark gray, 90 entries, mean=1.34) (see Chapter 2.1). Histogram sampling and statistics were done in \log_{10} space. (B) Functional relations between λ and φ for 2 different κ according to Eq. (5). Related one-sided CI's are given in parenthesis. The ratios φ are presented on a \log_{10} scale.

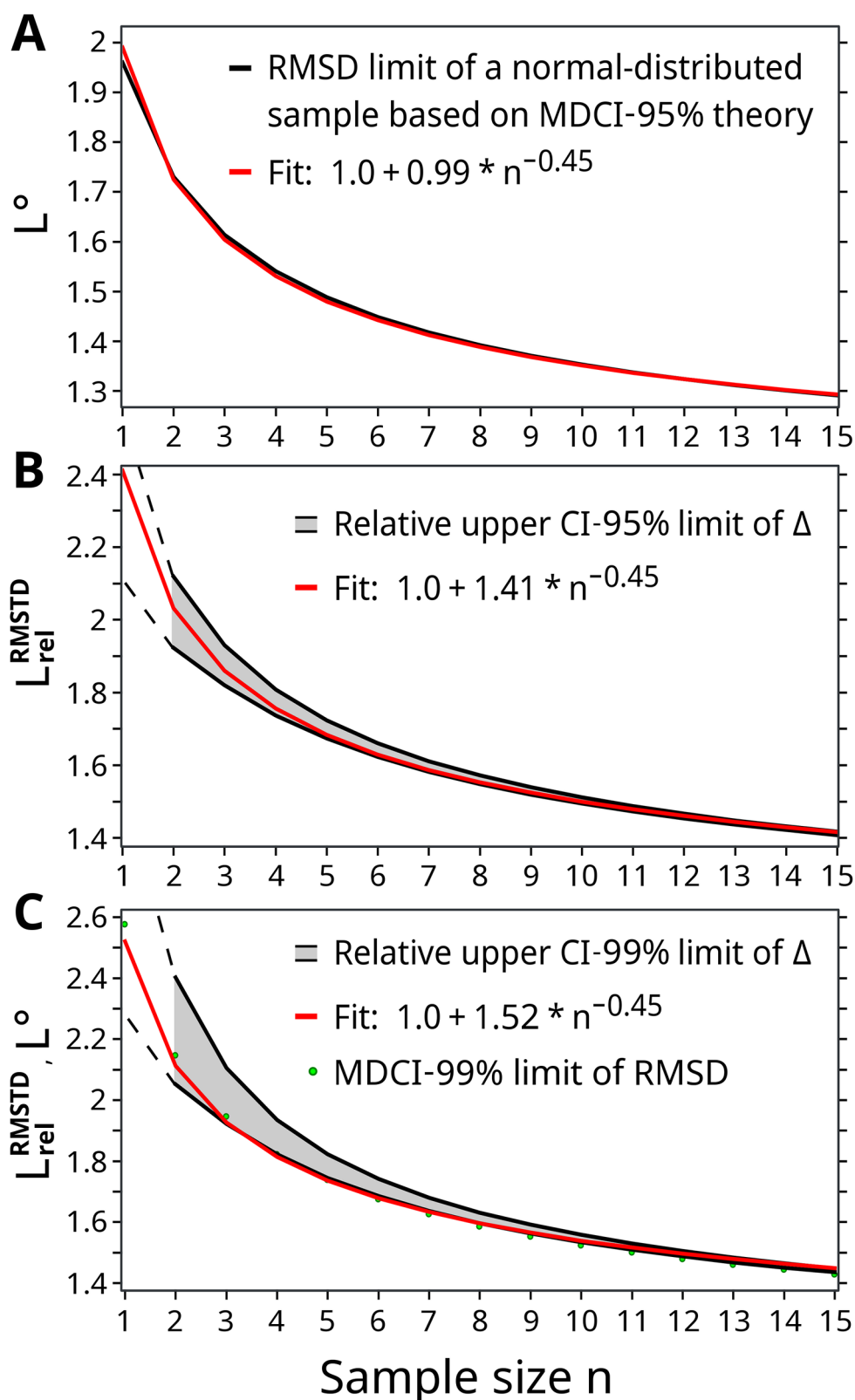


Figure 2: The graphs show the relative increase of the statistical uncertainty to determine a reliable value of RMSTD/RMSD based on small sample sizes n . All presented functions converge to 1 at $n \rightarrow \infty$. (A) The graph is related to the MDCI theory at a confidence interval of 95% (black line). (B,C) The black functions represent the statistical uncertainty of the RMSTD metric given by the CI_{Δ}^{up} approach with $\nu=0.6$. The CI_{Δ}^{up} approach becomes itself inherently uncertain at very small

sample sizes $n < 6$, indicated by gray corridors and explained in [14] and Chapter 3.1. Further, a value for $n=1$ is not defined by the CI_{Δ}^{up} approach. Thus, the dashed lines mark extrapolations by multi-parametric fits of the boundaries of the corridors. The corridors in (B) and (C) differ in the related confidence interval and the type of error propagation: (B) 95%, maximum error propagation; (C) 99%, Gaussian error propagation (see Chapter 3.1). Graph (C) also includes the MDCI function at CI-99% indicated by green dots. A best-matching function with same curvature ($n^{-0.45}$) is aligned to all graphs (red lines). This type of function is used in the SMART method.