

## Hearing loss is associated with gray matter differences in older adults at risk for and with Alzheimer's disease

Giroud, N. <sup>1,2\*</sup>, Pichora-Fuller, M. K. <sup>3</sup>, Mick P. <sup>4</sup>, Wittich, W. <sup>5</sup>, Al-Yawer, F. <sup>1</sup>, Rehan, S. <sup>1</sup>, Orange, J.B., & Phillips, N. A. <sup>1,2,7</sup>

<sup>1</sup> *Department of Psychology, Centre for Research in Human Development, Concordia University, Montréal, Québec, Canada*

<sup>2</sup> *Centre for Research on Brain, Language, and Music, Montréal, Québec, Canada*

<sup>3</sup> *Department of Psychology, University of Toronto, Mississauga, Ontario, Canada*

<sup>4</sup> *Department of Surgery, College of Medicine, University of Saskatchewan, Saskatoon, Saskatchewan, Canada*

<sup>5</sup> *School of Optometry, Université de Montréal, Montreal, Quebec, Canada*

<sup>6</sup> *School of Communication Sciences and Disorders, Western University, London, Canada*

<sup>7</sup> *Lady Davis Institute for Medical Research, Jewish General Hospital, Montréal, Québec, Canada*

Contact information authors:

First author: Nathalie Giroud: [nathalie.giroud@uzh.ch](mailto:nathalie.giroud@uzh.ch)

Senior author: Natalie A. Phillips: [natalie.phillips@concordia.ca](mailto:natalie.phillips@concordia.ca)

### **\*Corresponding author**

Dr. Natalie Phillips, Concordia University, Cognition, Aging, and Psychophysiology Laboratory, 7141 Sherbrooke Street West, H4B 1R6 Montreal, Quebec, Canada, Phone: +1 (514) 848-2424 ext. 2218, Email: [natalie.phillips@concordia.ca](mailto:natalie.phillips@concordia.ca)

**Date:** January 20th, 2021, revised: April 13, 2021

**Total word count:** 12'261

2    **Abstract**

3

4    Using data from the COMPASS-ND study we investigated associations between hearing loss and  
5    hippocampal volume as well as cortical thickness in older adults with subjective cognitive decline  
6    (SCD), mild cognitive impairment (MCI), and Alzheimer’s dementia (AD). SCD participants with  
7    greater pure-tone HL exhibited lower hippocampal volume, but more cortical thickness in the left  
8    superior temporal gyrus and right pars opercularis. Greater speech-in-noise reception thresholds were  
9    associated with lower cortical thickness bilaterally across much of the cortex in AD. The AD group  
10   also showed a trend towards worse speech-in-noise thresholds compared to the SCD group.

11

12

13

14   **Words:** 94

15   **Key Words:** subjective cognitive decline, mild cognitive impairment, Alzheimer’s dementia, hearing

16   loss, CLSA

17

18 **Highlights**

19

20

- In SCD, greater pure-tone hearing loss was associated with lower right hippocampal volume.

21

- Pure-tone hearing loss was not associated with brain atrophy in MCI or AD.

22

- Individuals with AD exhibited a trend towards poorer speech-in-noise (SiN) thresholds than

23

SCD.

24

- In AD, greater atrophy across large portions of the cortex was associated with greater SiN

25

thresholds.

26

## 27 **1. Introduction**

28 The global prevalence of Alzheimer’s dementia (AD) is expected to triple by 2050, leading to  
29 immense personal, social, and health care costs<sup>1</sup>. Attention is now focused on behavioral and non-  
30 pharmacological interventions because of the low efficacy of pharmacological treatments (Livingston  
31 et al., 2017, 2020). Identifying and treating modifiable risk factors is a promising strategy to delay the  
32 onset or progression of AD (Livingston et al., 2017, 2020). Indeed, it is estimated that delaying the  
33 onset of dementia by 5 years would lead to an approximate 50% reduction in prevalence after 10 years  
34 (Brookmeyer et al., 1998). In a meta-analysis by Livingston et al. (2020) examining risk factors for  
35 dementia, the population attributable fraction for hearing loss was estimated at 8%, which was higher  
36 than the value for all other modifiable risk factors identified in the study. Currently, there is  
37 insufficient evidence regarding whether or not prevention of or treatments for hearing loss can modify  
38 dementia risk, but this is an active topic of research (Deal et al., 2018; Sanchez et al., 2020; Sarant et  
39 al., 2020).

40 Typically, age-related hearing loss is characterized by elevated pure-tone audiometric thresholds for  
41 high-frequency sounds (International Organization for Standardization (ISO), 2017). Age-related  
42 hearing loss is multifactorial, with increased audiometric thresholds at high-frequencies often resulting  
43 from damage to cochlear outer hair cells or the stria vascularis in the auditory periphery (Dubno et al.,  
44 2013; Mills et al., 2006). In addition, there is evidence that degeneration in the synaptic connections  
45 between cochlear hair cells and nerve fibers may contribute to inaccurate coding of acoustic signals,  
46 leading to difficulties speech understanding (Lieberman and Kujawa, 2017). Peripheral auditory  
47 damage can also lead to maladaptive (sub)cortical plasticity leading, for example, to a loss of  
48 inhibition and hyperexcitability (Herrmann and Butler, 2020). Notably, even older adults with normal  
49 or near-normal audiometric pure-tone thresholds can have difficulties understanding speech in noise in  
50 everyday situations because of age-related declines in auditory processing (Pichora-Fuller et al., 2017).  
51 In general, age-related hearing loss leads to difficulty participating in conversations and social  
52 interactions and is associated with reduced quality of life, social isolation, and higher rates of  
53 depressive symptoms (Arlinger, 2003; Pichora-Fuller et al., 2015). Older adults often remark that they  
54 can hear but cannot discriminate or easily understand what is said in noisy environments.

55 There is a strong link between auditory and cognitive functioning (e.g. Lindenberger and Baltes,  
56 1994). Hearing loss (defined by pure-tone thresholds or measures of auditory processing such as  
57 speech-in-noise understanding) is related to self-reported (Curhan et al., 2019) and behavioral  
58 measures of cognitive decline in aging (Fischer et al., 2016; Fortunato et al., 2016; de la Fuente et al.,  
59 2019; Merten et al., 2019). Hearing loss also is linked to incident all-cause dementia (Albers et al.,  
60 2015; Deal et al., 2015, 2019; Gates et al., 2011; Lin and Albert, 2014; Lin et al., 2011a; Osler et al.,  
61 2019). However, despite growing evidence for a link between auditory and cognitive decline, the

---

<sup>1</sup> [https://www.who.int/mental\\_health/neurology/dementia/guidelines\\_risk\\_reduction/en/](https://www.who.int/mental_health/neurology/dementia/guidelines_risk_reduction/en/)

62 underlying mechanisms are still unclear. Several hypotheses were proposed over 25 years ago to  
63 explain the relationship between hearing and cognitive decline (Lindenberger and Baltes, 1994, and  
64 versions of these hypotheses continue to motivate research; e.g., Whitson et al., 2018); however, no  
65 single hypothesis can explain most of the effects reported in the literature (Pronk et al., 2019).  
66 Consistent with the common-cause hypothesis, associations between hearing and cognitive decline  
67 may be due to a common biological cause such as widespread age-related neural decline. According to  
68 the information degradation hypothesis, it is possible that older adults do not encode auditory  
69 information as well as those with normal hearing. When it is difficult to hear, such as in noisy  
70 environments, the listener may increase the allocation of cognitive resources to lower-level perceptual  
71 auditory processing, thereby diverting resources from higher-order cognitive processing and resulting  
72 in poorer cognitive performance (e.g., on measures of memory (McCoy et al., 2005)). In addition,  
73 according to the sensory deprivation hypothesis, chronic reallocation of cognitive resources may bring  
74 about permanent changes in patterns of brain activation and structure (Pelle and Wingfield, 2016).  
75 In addition to the auditory-cognitive link, an association between hearing loss and brain atrophy in  
76 gray and white matter has been reported. Greater hearing loss is correlated with lower gray matter  
77 volume in brain regions associated with auditory perception (e.g., superior temporal lobe) as well as  
78 regions associated with cognition (e.g., hippocampus, parahippocampus) (Alfandari et al., 2018;  
79 Armstrong et al., 2019; Eckert et al., 2012; Ren et al., 2018; Rigters et al., 2018, 2017; Rudner et al.,  
80 2019; Tuwaig et al., 2017; Uchida et al., 2018; but see Profant et al., 2014). Moreover, longitudinal  
81 studies demonstrate that greater hearing loss is related to greater gray matter volume loss (Lin et al.,  
82 2014; Xu et al., 2019) and lateral ventricle expansion (Eckert et al., 2019). These findings are  
83 consistent with the sensory deprivation hypothesis, such that less and/or degraded sensory input to the  
84 brain may lead to long-term deprivation effects on the auditory pathways causing structural decline as  
85 well as neurofunctional changes (Pelle and Wingfield, 2016). For example, Lin et al. (2014) showed  
86 that, in cognitively normal older adults, those greater hearing loss exhibited accelerated volume loss  
87 compared to those with normal hearing. Such accelerated volume loss was observed in several regions  
88 of the temporal lobe (i.e., right superior, middle, and inferior temporal gyri and the parahippocampus)  
89 that are important for auditory processing, semantic memory functioning, and cognitive processing.  
90 The associations between hearing loss and brain atrophy provide evidence for the sensory deprivation  
91 hypothesis because they suggest that long-term hearing loss is associated with specific types of  
92 structural loss in the brain. In older adults with dementia, hearing loss might even be directly  
93 interacting with dementia neuropathology in the medial temporal lobe – a hypothesis which has been  
94 put forward recently (Griffiths et al., 2020).  
95 However, previous studies of the associations between hearing loss and brain atrophy have examined  
96 mainly healthy older adults with no clinically significant cognitive impairment. Studies of individuals  
97 who are particularly at risk for developing AD, as well as in those who have already been diagnosed  
98 with AD, could reveal whether hearing loss is independently associated with brain atrophy in those

99 who typically have more vulnerable brains because of neuropathology-related atrophy. AD  
100 neuropathology typically causes accelerated gray and white matter declines which are core biomarkers  
101 of AD (for a review see Pini et al., 2016). Furthermore, individual differences in cognitive  
102 performance correlate with brain structural measures in those with subjective cognitive decline (SCD)  
103 and mild cognitive impairment (MCI). For example, lower memory performance in a face-name recall  
104 test, which is sensitive to impairment in early stages of AD, correlated with smaller right hippocampal  
105 volume in SCD and MCI (Caillaud et al., 2019). SCD refers to individuals who have subjective  
106 complaints about their cognitive capacities, but who perform within normal limits on behavioral  
107 neuropsychological tests (Jessen et al., 2010, 2014). MCI refers to individuals who show clinically  
108 significant impairment in one or more cognitive domains, while their functional abilities in everyday  
109 life are judged to be intact (Albert et al., 2011). There is longitudinal evidence that SCD is a risk factor  
110 for cognitive decline as well as for AD and that it occurs at the preclinical stage of AD and other  
111 dementias (Glodzik-Sobanska et al., 2007; Jessen et al., 2010; van Oijen et al., 2007; Reisberg et al.,  
112 2010). Similarly, MCI is a strong risk factor for AD and, in some individuals, describes an  
113 intermediate stage between normal cognitive aging or preclinical AD and AD. However, not all  
114 persons with MCI convert to AD, with reported rates between 20-40% (Albert et al., 2011; Roberts  
115 and Knopman, 2013).

116 The extent to which hearing loss is independently associated with (sub)cortical gray matter loss in  
117 those with varying degrees of cognitive impairment and neuropathology has yet to be examined. There  
118 is little evidence that pathological features of AD, such as amyloid plaques or neurofibrillary tangles,  
119 are observed in the cochlea (Sinha et al., 1993; Wang and Wu, 2015, but see Omata et al., 2016).  
120 Thus, an independent association between hearing loss and brain atrophy in those at risk for or with  
121 AD would be evidence for the sensory deprivation hypothesis in these individuals.

122 In the current study, we analyzed data from the first wave of data released from the COMPASS-ND  
123 (Comprehensive Assessment of Neurodegeneration and Dementia) study (Chertkow et al., 2019). The  
124 COMPASS-ND cohort includes participants with varying types and degrees of cognitive impairment  
125 (for more information about COMPASS-ND see: <http://ccna-ccnv.ca/compass-nd-study/>). We  
126 compared these diagnostic groups on measures of pure-tone hearing loss and speech-in-noise  
127 thresholds. We also examined the associations between the two auditory measures and expected them  
128 to be positively associated in each diagnostic group. Further, we examined the extent to which hearing  
129 loss is related to gray matter atrophy in the hippocampus as well as whole-brain analysis of cortical  
130 thickness in those with SCD, MCI, and AD. We hypothesized that higher (worse) pure-tone thresholds  
131 and/or higher (worse) speech-in-noise thresholds would be associated with lower cortical thickness in  
132 all three groups. Specifically, we expected pure-tone thresholds to be negatively correlated with  
133 cortical thickness in primary and secondary auditory areas, hippocampal volume, and possibly the  
134 prefrontal cortex (due to reallocation of resources). Furthermore, we hypothesized that speech-in-noise  
135 word recognition thresholds to be negatively associated with the cortical thickness of primary and

136 secondary auditory areas, the prefrontal cortex, and the temporo-parietal areas involved in speech  
137 processing. Such associations would be evidence for the sensory deprivation hypothesis in those with  
138 or at high risk for developing dementia.

## 139 **2. Material and Method**

### 140 **2.1. Participants**

141 Participants in the present study were selected from those whose data were included in the first or  
142 second wave of the COMPASS-ND data released in November 2018 and May 2019, respectively.  
143 General COMPASS-ND inclusion criteria included: being between 50-90 years of age, having a study  
144 partner who sees the participant weekly and who can participate as required by the protocol, passing  
145 the safety requirements for the MRI scanning, and possessing sufficient proficiency in English or  
146 French (as judged by the examiner) to undertake self-report and neuropsychological testing. Exclusion  
147 criteria were as follows: presence of significant known chronic brain disease unrelated to AD, on-  
148 going alcohol or drug abuse which, in the opinion of the investigator, could interfere with the person's  
149 ability to comply with the study procedures, severe cognitive impairment indicated by a score of  $\leq$   
150 13/30 on the Montréal Cognitive Assessment (MoCA; Nasreddine et al., 2005) or a symptomatic  
151 stroke within the previous year. Written informed consent was obtained from all participants. The  
152 COMPASS-ND study was approved by all relevant Research Ethics Boards.

153 In the present study, we analyzed the data from individuals who met the criteria for SCD (N=35), MCI  
154 (N=85), or AD (N=25). Of those 145 participants, 10 were excluded: four (3 MCI, 1 AD) did not have  
155 MRI data, one (MCI) did not have hearing data, and five (2 MCI, 3 AD) were considered to be outliers  
156 with measures that were +3 standard deviations (SD) above average in cortical volume. Thus, a final  
157 total of 135 participants (N=35 SCD; N=79 MCI; N=21 AD) were included. Table 1 provides an  
158 overview of the demographic and health variables for each group. We found significant group  
159 differences in age and sex, and the group difference in education approached significance ( $p=.1$ ); thus,  
160 we included these variables as covariates in all analyses.

161 --- Insert Table 1 about here ---

### 162 **2.2. Criteria for SCD**

163 One core criterion for SCD is a self-experienced persistent decline in cognitive capacities in  
164 comparison to previous normal status, with the decline being unrelated to an acute event. This  
165 criterion was operationalized by two questions 1) "Do you feel like your memory or thinking is  
166 becoming worse?" and, if so, 2) "Does this concern you?" Only individuals who answered the two  
167 questions with "yes" were assigned to the SCD group (following Jessen et al., 2014). Further inclusion  
168 criteria for SCD was normal age- and education-adjusted performance on standardized cognitive tests  
169 (Chertkow et al., 2019), including a) a score of  $\geq 25/30$  on the MoCA (Nasreddine et al., 2005), b) a  
170 word list recall score of  $> 5$  on the Consortium to Establish a Registry for Alzheimer's Disease

171 (CERAD), c) performance above Alzheimer's Disease Neuroimaging Initiative (ADNI) education-  
172 adjusted cut-offs on the delayed recall of the Logical Memory Subtest of the Wechsler Memory Scale-  
173 3<sup>rd</sup> ed. (WMS-III; Tulskey et al., 2003), and d) no symptoms (i.e., a zero) on the Clinical Dementia  
174 Rating (CDR; Hughes et al., 1982).

### 175 **2.3. Criteria for MCI**

176 Participants who reported, or whose informants reported, a concern regarding a change in the  
177 participant's cognition were included in the MCI group if they were determined to be able to follow  
178 daily life routines independently (Chertkow et al., 2019) and met at least one of the following four  
179 criteria representing impairment in one or more cognitive domains (Albert et al., 2011): a) WMS-III  
180 Logical Memory Delayed Recall score < ADNI education-adjusted cut-offs, b) CERAD word list  
181 recall < 6, c) MoCA score 13-24/30, d) assigned a CDR of  $\leq 0.5$ .

### 182 **2.4. Criteria for AD**

183 Participants who were diagnosed with AD were selected based on the following three criteria  
184 (following McKhann et al., 2011): a) a gradual progressive change in memory and/or other cognitive  
185 functions over more than six months based on the participant's and/or informant's report; b) objective  
186 evidence of a significant decline in at least two domains of cognition (i.e., episodic memory,  
187 reasoning, problem solving, visuospatial abilities, language, personality/behavior) as defined by  
188 fulfilling at least two of the following criteria: Logical Memory II score below ADNI cutoffs, CERAD  
189 word list recall < 7, MoCA score 13-24/30 (with at least one point lost in a non-memory task), or a  
190 positive response to the question: "Has the participant had any changes in personality or behavior?"; c)  
191 the presence of impairment in functional abilities operationalized by a positive response to the  
192 statement, "The cognitive deficits interfere with independence in everyday activities such as paying  
193 bills or managing medications" (Chertkow et al., 2019).



194 **2.5. Hearing loss**

195 **2.5.1. Pure-tone audiometry**

196 Pure-tone audiometry was conducted using an abbreviated screening protocol using a GSI 18  
197 audiometer in a quiet clinical examination room. The screening protocol assessed if participants were  
198 able to detect at least one of two presentations of a pure tone presented at each of 3 pre-selected  
199 frequencies at fixed dB HL levels. Each ear was tested separately. First, there were two trials where a  
200 2-kHz pure tone was presented at 40 dB HL. If the participant successfully detected at least one  
201 presentation at 40 dB HL, then two trials at 25 dB HL were presented at 2 kHz, 1 kHz, and 4 kHz.  
202 Participants who failed to hear a 2-kHz pure tone at 40 dB HL were provided with a Pocket Talker  
203 assistive listening device throughout the neuropsychological and clinical assessment if they did not  
204 have their own hearing aid.

205 For the present analyses, participants were assigned to one of six hearing loss categories based on their  
206 ability to detect at least one of the 2-kHz pure tones at 40 dB HL or 25 dB HL as described in the left-  
207 hand column of Table 2<sup>2</sup>. Using the audiometric thresholds of older adults from two large datasets, the  
208 six categories defined based on the COMPASS-ND pure-tone screening protocol were validated by  
209 examining their correspondence to commonly used categories of hearing loss that are typically  
210 determined by four-frequency pure-tone averages (see Table 2). In order to validate the six categories  
211 of hearing loss defined based on the pure-tone screening protocol used in COMPASS-ND based on the  
212 detection of a 2-kHz pure tone at 25 or 40 dB HL, we applied the same classification method to two  
213 large databases for older adults whose audiometric thresholds had been measured. The first dataset  
214 was a community-based sample of 27,444 healthy Canadians who participated in the baseline  
215 comprehensive cohort of the Canadian Longitudinal Study on Aging (CLSA) (Raina et al., 2009), for  
216 whom air-conduction pure-tone audiometric thresholds were measured at octave frequencies from .25  
217 to 8 kHz in each ear (CLSA data release 3.2; see <https://www.clsa-elcv.ca/doc/529> for CLSA  
218 audiometry protocol). We categorized these participants according to which screening category their  
219 PTA results would place them in and then, within each category, calculated their mean pure-tone  
220 average (PTA). Table 2 shows the 1, 2, 3, and 4 kHz PTA for the CLSA comprehensive cohort based  
221 on the COMPASS-ND classification scheme described above. There was a monotonic worsening in  
222 PTA from Category 1 (better hearing) to Category 6 (worse hearing), confirming that the COMPASS-  
223 ND method properly distinguishes people according to their hearing abilities.

224 --- Insert Table 2 about here ---

225 The second dataset was obtained from the another project (N=242, mean age = 70.67 (SD = 5.94),  
226 mean years of education = 15.25 (SD = 2.31), 69.4% women), to investigate stigma related to aging  
227 and hearing loss in Canada, to correlate our hearing loss categorization variable with the PTA of full

---

<sup>2</sup> Based on a  $X^2$  test, there were no differences in the number of males and females in HL category in SCI, MCI, or AD.

228 audiograms (1000, 2000, 4000 Hz) of the better ear ( $r=.84, p<.001$ ) and the worse ear ( $r=.85, p<.001$ ).  
229 Overall, these two additional datasets show that our hearing loss categorization based on the more  
230 restricted COMPASS-ND hearing screening protocol was valid.

231 For the statistical analyses we treated the six hearing loss categories as scaled data, because Categories  
232 1-6 reflect the degree of hearing loss.

### 233 **2.5.2. Canadian Digit Triplet Test (CDTT)**

234 The Canadian Digit Triplet Test (CDTT) was used to measure participants' speech reception threshold  
235 (SRT) corresponding to the signal-to-noise ratio at which triplets of digits are recognized correctly  
236 50% of the time. Participants were instructed to listen to three digits presented in speech-shaped  
237 background noise and to repeat them. The CDTT application was run on a Dell XPS laptop using a  
238 USB audio card (Creative Sound Blaster X-Fi Go! Pro). The CDTT uses an adaptive 1-up-1-down  
239 procedure; the speech level increases after a correct response (all three digits repeated correctly) and  
240 decreases after an incorrect response (Ellaham et al., 2016; Giguère et al., 2020). For each participant,  
241 the standard deviation (SD) of the responses and the number of reversals were used to identify erratic  
242 runs. SRTs from all participants were considered be valid with the exception of 2 participants (1 AD, 1  
243 MCI) who had SDs higher than +3 above the mean SD for each diagnostic group and whose results  
244 were excluded from analyses. Furthermore, the SRT of 1 additional participant (SCD), who was  
245 categorized as having "Mild 1" pure-tone hearing loss based on audiometric screening results, was  
246 excluded because this individual's SRT was higher than +4 dB SNR which is atypical for persons with  
247 mild hearing loss in this sample (this participant)<sup>3</sup>.

### 248 **2.6. MRI data acquisition and analyses**

249 T1-weighted images were obtained from each participant using 3T scanners following the Canadian  
250 Dementia Imaging Protocol (CDIP) (Duchesne et al., 2019). The CDIP is a validated, harmonized  
251 protocol for multi-site MRI data acquisition to study neurodegeneration and is available for scanners  
252 manufactured by major vendors (GE, Phillips, and Siemens). The parameters for the acquisition of the  
253 3D T1-weighted images can be found here <https://www.cdip-pcid.ca/>. The CDIP established  
254 parameters for each scanner type and version allowing for the images to be as comparable as possible  
255 across scanners.

256 Hippocampal volumes were extracted from the T1-weighted images which were submitted to the  
257 ANIMAL (automatic non-linear image matching and anatomical labeling) segmentation method which  
258 is an atlas-based segmentation method that uses non-linear registration to a pre-labeled template  
259 (Collins and Pruessner, 2010; Collins et al., 1995). Furthermore, we performed a FreeSurfer analysis  
260 (version 4.2, <http://freesurfer.net/>) on the T1-weighted images of the same participants to extract

---

<sup>3</sup> Running an ANOVA with sex and diagnostic group as between-subjects variables, we did not find any differences between males and females in the SRTs on the CDTT in SCI, MCI, or AD.

261 cortical thickness of cortical regions. The FreeSurfer pipeline performs surface-based morphometry  
262 (SBM) which involves several processing steps that have been described in detail in previous  
263 publications (Dale et al., 1999; Fischl and Dale, 2000; Fischl et al., 1999, 2002, 2004). The fully  
264 automated pipeline was run on CBRAIN (Sherif et al., 2014), a web-based software for computing  
265 intensive analyses that generates individual cortical surface models with high spatial precision. Data  
266 from five MCI participants were excluded due to errors during preprocessing. All other brain scans  
267 were manually checked for the segmentation precision, resulting in 3 additional MCI participants  
268 being removed from the analysis due to severe segmentation errors.

269 Cortical thickness was measured by the minimal distance between the gray-white matter border and  
270 the pial surface. FreeSurfer-based cortical thickness values have previously been validated against  
271 manual measurements of cortical thickness as well as histological analysis (Cardinale et al., 2014) and  
272 have been shown to be reliable in healthy older adults (Liem et al., 2015). Whole-brain statistical  
273 analyses were calculated using the FreeSurfer built-in general linear model (GLM) toolbox to identify  
274 thickness of brain regions associations with hearing loss category (GLM 1) and CDTT (GLM 2). In  
275 order to compute the GLMs, each participant's segmented brain was morphed to an average spherical  
276 surface and smoothed using a FWHM kernel of 15 mm. A significance threshold of  $p=.001$  was  
277 applied as was done in previous studies on older adults with hearing-related disorders such as tinnitus  
278 (Meyer et al., 2016; Vanneste et al., 2015).

### 279 **2.7. Statistical analyses and covariates**

280 We used age, sex, and education as covariates in all statistical analyses. When exploring the  
281 relationship between CDTT SRT and cortical thickness, we controlled for pure-tone hearing loss  
282 category. IBM SPSS Statistics 24 was used for statistical analyses.

283 Three families of statistical analyses were conducted as follows: First, two one-way ANOVAs  
284 (Section 3.1.) were conducted with diagnostic group as a between-subjects variable to determine if the  
285 groups differed in their degree of audiometric hearing loss using hearing loss category and  
286 subsequently CDTT SRT as the dependent variables. Second, the association between the two  
287 different measures of hearing loss (i.e., audiometric hearing loss category and CDTT SRT) was  
288 explored within each diagnostic group using parametric partial correlations (Section 3.2.). Third,  
289 associations between hearing loss and hippocampal volumes were computed using parametric partial  
290 correlations. Associations between hearing loss and cortical data were computed as described above  
291 (Section 3.3.). Unless otherwise indicated, an alpha level of  $\alpha = 0.05$  was accepted and effect sizes  
292 were indicated by partial eta squares ( $\eta_p^2$ ).

## 293 **3. Results**

### 294 **3.1. Diagnostic group comparisons in hearing**

295 Figure 1 shows the audiometric hearing loss categories and CDTT SRT measures for each of the three  
296 diagnostic groups. The diagnostic groups did not differ significantly on the audiometric hearing loss  
297 category measure ( $F(2,126)=.33, p=.72, \eta_p^2=.005$ ; Figure 1, left panel). Most participants were  
298 categorized as having normal audiometric thresholds or mild hearing loss, while a notable minority  
299 had moderate hearing loss or greater. There was a trend towards diagnostic groups differing on CDTT  
300 SRT ( $F(2,109)=2.73, p=.07, \eta_p^2=.05$ ), see Figure 1 right-hand side. Post-hoc t-tests showed a trend  
301 towards higher (poorer) SRTs in the AD compared to the SCD group, with this difference between  
302 groups approaching but not reaching significance ( $p=.08$ ).

303 --- Insert Figure 1 about here ---

### 304 **3.2. Associations between audiometric hearing loss category and CDTT SRT**

305 Partial correlations between hearing loss category and CDTT thresholds (see Figure 2) revealed  
306 significant positive associations (based on an adjusted  $p$ -value divided by three for each correlation  
307 computed in the three diagnostic groups:  $.05/3=.017$ ) in the SCD group ( $r(24)=.64, p<.001, R^2=.41$ )  
308 and the MCI group ( $r(63)=.70, p<.001, R^2=.49$ ), and associations approaching significance in the AD  
309 group ( $r(14)=.43, p=.07, R^2=.18$ ), suggesting that the more pure-tone hearing loss the participants  
310 exhibited, the greater (worse) their SRTs were on the CDTT. Furthermore, even though the association  
311 was only trending in the AD group, the Fisher  $r$ -to- $z$  transformation of the correlation coefficients  
312 suggested that the strengths of the associations were not different between the diagnostic groups (SCD  
313 vs. MCI  $p=.56$ , SCD vs. AD  $p=.36$ , MCI vs. AD  $p=.58$ ).

314 --- Insert Figure 2 about here ---

### 315 **3.3. Associations between hearing measures and brain structural measures**

#### 316 **3.3.1. Hearing loss and hippocampal volume**

317 Table 3 and Figure 3 show the associations between the two hearing loss measures and hippocampal  
318 volume. SCD participants who had greater pure-tone hearing loss had lower gray matter volume in the  
319 right hippocampus ( $R^2=.17$ ). No significant correlations were found in the MCI and AD groups,  
320 suggesting that for those with stronger cognitive impairment, the association between pure-tone  
321 hearing loss and brain structure was not reliable. In order to statistically assess the observation that the  
322 correlation coefficients between pure-tone hearing loss and right hippocampal volume are different for  
323 diagnostic groups (i.e., greater pure-tone hearing loss is associated with lower right hippocampal  
324 volume in only those without objective evidence of cognitive impairment), we calculated a Fisher  $r$ -to-  
325  $z$  transformation of the correlation coefficients. The findings supported this interpretation with SCD  
326 vs. MCI  $p=.04$ ., SCD vs. AD  $p=.45$ , MCI vs. AD  $p=.10$ .

327 --- Insert Table 3 about here ---

328 --- Insert Figure 3 about here ---

### 329 **3.3.2. Hearing loss and cortical thickness**

330 The whole-brain GLM model showed that there were two significant positive associations between  
331 hearing loss category and cortical thickness, one in the left superior temporal gyrus and the other in the  
332 right pars opercularis ( $p < .001$ , controlling for multiple comparisons) as shown in Figure 4 and Table 4.  
333 Both significant associations were observed in the SCD group, with those who had greater (worse)  
334 pure-tone hearing loss having greater cortical thickness in those two brain regions. No significant  
335 associations were found in the MCI or AD groups once we controlled for multiple comparisons.

336 --- Insert Table 4 about here ---

337 --- Insert Figure 4 about here ---

338 The whole-brain GLM model using CDTT SRT as a predictor resulted in several significant clusters  
339 across the brain, as shown in Figure 5 and Table 4. In the SCD and MCI groups, a few positive  
340 correlations were found. In contrast, in the AD group, there were negative correlations in temporal,  
341 parietal, and occipital brain regions, indicating that those who have greater (worse) CDTT SRTs have  
342 less cortical thickness in a number of brain regions across the cortex.

343 --- Insert Figure 5 about here ---

344

## 345 **4. Discussion**

346 The findings of the present study indicate that there are significant associations between hearing loss  
347 and brain anatomical measures. Importantly, these associations differed by diagnostic group and  
348 whether hearing loss is measured in terms of pure-tone detection or the supra-threshold CDTT speech-  
349 in-noise SRT measure. In persons with cognitive complaints (i.e., SCD), pure-tone hearing loss  
350 category was associated with reduced right hippocampal volume (see Figure 3) and increased cortical  
351 thickness in the left superior temporal gyrus and the right pars opercularis (see Figure 4). In  
352 individuals with MCI, CDTT speech-in-noise SRTs were associated with increased cortical thickness  
353 in the right supramarginal gyrus, the superior frontal gyrus, the orbitofrontal gyrus and the anterior  
354 cingulum (see Figure 5). For participants with diagnosed AD, the CDTT SRTs were associated with  
355 wide-spread loss in cortical thickness (see Figure 5). The significance and implications of these  
356 findings are discussed in detail in the next sections.

### 357 **4.1. Associations between hearing category based on pure-tone detection and brain structure** 358 **differ across diagnostic groups**

359 Our diagnostic groups did not differ in hearing loss category based on the detection of pure tones  
360 when controlling for age, sex, and education. Importantly, this suggests that associations between  
361 pure-tone hearing loss categories and specific brain structure are not confounded by group differences

362 in the degree of hearing loss. Nevertheless, the groups differed in the associations between pure-tone  
363 hearing loss category and neuroanatomical measures.

364 Despite the fact that the groups did not differ in their degree of hearing loss, we found that more  
365 severe pure-tone hearing loss was associated with more cortical atrophy in the right hippocampus, but  
366 only in the SCD group. Notably, based on the amount of variance explained, our results indicate that  
367 SCD participants with moderate hearing loss (those in hearing loss categories 5 or 6) have 4% lower  
368 volume in the right hippocampus than SCD participants with normal hearing or mild hearing loss  
369 (those in hearing loss categories 1, 2, or 3), even after controlling for age, sex, and education. In other  
370 words, the right hippocampus of these individuals with moderate-to-severe hearing loss “looks”  
371 approximately 8 years older given that the normal shrinkage is approximately 0.5% annually for  
372 people above 60 years of age (Fjell et al., 2009). Previous cross-sectional research has found similar  
373 associations between pure-tone hearing loss and hippocampal volume in healthy older adults (Uchida  
374 et al., 2018). There have been similar findings in longitudinal studies showing accelerated decline in  
375 the hippocampus (Xu et al., 2019) and in the right parahippocampus (Lin et al., 2014) across time in  
376 healthy older adults with pure-tone hearing loss. Our results therefore extend previous findings by  
377 showing that the association between hearing loss and hippocampal volume is also evident in older  
378 adults who subjectively believe that their cognition has declined and who are at risk of developing  
379 Alzheimer’s disease, even though their performance on neuropsychological tests is considered to be  
380 normal. Future research should investigate a possible link between hearing loss, cognition, and  
381 hippocampal volume, given that cognitively healthy older adults with greater pure-tone hearing loss  
382 perform worse on memory tasks such as a) in (delayed) word recall (Colsher and Wallace, 1990; Deal  
383 et al., 2015; Ray et al., 2018) and b) in the free and cued selective reminding test (FCSRT) (Lin et al.,  
384 2011b)). Performance in such tasks is mediated by the hippocampus (e.g. word recall (Fernández et  
385 al., 1999) and FCSRT (Slachevsky et al., 2018)), while there are also sex differences to be considered  
386 (Al-Yawer et al., submitted).

387 Interestingly, the associations between pure-tone hearing loss category and cortical thickness in the  
388 SCD group were mostly positive, meaning that those with greater pure-tone hearing loss had more  
389 cortical thickness in the left superior temporal gyrus (STG) and the right pars opercularis. Previous  
390 studies that have found positive relationships between degree of pure-tone hearing loss and gray  
391 matter volume have interpreted the results within a compensation framework (Alfandari et al., 2018).  
392 The left STG, belonging to the auditory association cortex, is involved in the spectro-temporal analysis  
393 of speech (Hickok and Poeppel, 2007) and multisensory integration of auditory and visual speech cues  
394 (Callan et al., 2001; Möttönen et al., 2002). Moreover, the structural integrity of the left STG is a  
395 predictor of auditory working memory (Leff et al., 2009). Therefore, it is possible that those who have  
396 greater pure-tone hearing loss rely more on multisensory cues (e.g., visual speech cues) and on  
397 working memory during speech understanding such that they show alterations in the structure of the  
398 STG as a function of pure-tone hearing loss. Similarly, the right pars opercularis is involved in speech

399 processing (Vigneau et al., 2011), particularly in speech perception tasks involving vowel tone pitch  
400 discrimination (Joanisse and Gati, 2003), syllable discrimination (Poeppel et al., 2004), and sentence  
401 pitch and linguistic prosody processing (Meyer et al., 2002). Thus, it is possible that those with greater  
402 pure-tone hearing loss might rely more on prosodic speech cues (Giroud et al., 2018, 2019), leading to  
403 structural plasticity in the right pars opercularis.

404 In contrast to the significant associations between pure-tone hearing loss category and hippocampal  
405 volume as well as cortical thickness in SCD, we did not find any significant associations between  
406 pure-tone hearing loss category and hippocampal volume or cortical thickness in MCI or AD. The  
407 results suggest that the associations between pure-tone hearing loss and gray matter loss are  
408 undetectable or not significant in groups with greater cognitive impairment (i.e., MCI and particularly  
409 AD), even though they typically have strong reductions in gray matter as compared to the SCD group.  
410 This is consistent with the findings of Xu et al. (2019) who reported more rapid decline in the  
411 hippocampus in those with greater pure-tone hearing loss in the preclinical stage (i.e., when AD is  
412 clinically asymptomatic but biomarkers suggest the presence of amyloid pathology) and in MCI, but  
413 not in individuals already diagnosed with dementia. Nevertheless, it remains an open question as to  
414 whether persons with either MCI or AD who have pure-tone hearing loss show greater cognitive  
415 decline than those without pure-tone hearing loss.

416 In sum, our data did not reveal any differences in pure-tone hearing loss between diagnostic groups. In  
417 contrast, one previous study reported that there was a higher prevalence of hearing loss (> 35 dB HL  
418 based on PTA of .5, 1, 2, and 4 kHz in the better ear) in people with MCI compared to healthy older  
419 adults and in people with AD compared to those with MCI and healthy older adults (Quaranta et al.,  
420 2014); however, most studies do not have such data because they examined the association between  
421 pure-tone hearing loss and cognitive decline in healthy older adults or in a group who were initially  
422 healthy and at risk of developing dementia (Deal et al., 2015, 2016, 2019; de la Fuente et al., 2019;  
423 Okely et al., 2019; Osler et al., 2019).

424 Our cross-sectional analysis further indicates that moderate pure-tone hearing loss in those who are  
425 otherwise cognitively healthy, but who have subjective cognitive complaints, is associated with lower  
426 volume in the right hippocampus, a biomarker of dementia. We note that we did not find lower  
427 hippocampal volume as a function of pure-tone hearing loss in the MCI or AD group in our sample.  
428 Furthermore, those with greater pure-tone hearing loss in the SCD group also exhibited more cortical  
429 thickness in the left STG and the right pars opercularis. This finding suggests potentially  
430 compensatory structural plasticity insofar as those with greater pure-tone hearing loss may rely more  
431 on multisensory and prosodic speech cues as well as the phonological loop component in their  
432 working memory during speech understanding compared to those with less severe pure-tone hearing  
433 loss. The fact that these hearing-brain structure associations were found only in individuals with SCD,  
434 but not MCI or AD, suggests that dementia-related neuropathology, which is reflected in brain atrophy

435 among other biomarkers, may be overshadowing the potential effects of pure-tone hearing loss on  
436 brain structure.

437

#### 438 **4.2. Associations between hearing loss and brain structure depend on hearing loss** 439 **measurement**

440 In addition to the association between measures of brain structure and hearing loss category based on  
441 the detection of pure tones, we also use the CDTT measure of speech-in-noise SRT as a predictor of  
442 cortical structure. First, independent of hearing loss category, there was a trend for CDTT SRTs to be  
443 lower (better) for the SCD group compared to the AD group. This pattern of results suggests that those  
444 with AD have slightly (although not significantly) more difficulty recognizing even very simple  
445 speech stimuli (digit triplets) in noise. This is consistent with findings of central auditory processing  
446 dysfunctions in individuals with AD and partially also in those with MCI on an auditory processing  
447 measure using dichotic presentation of digits (Idrizbegovic et al., 2011).

448 We also investigated the associations between CDTT SRTs and cortical thickness in all three  
449 diagnostic groups. For the AD group only, we found negative correlations between CDTT SRTs and  
450 brain structure across the whole brain. Specifically, those with greater (poorer) CDTT SRTs had lower  
451 cortical thickness in bilateral superior temporal gyri, right inferior temporal gyrus, right lateral  
452 occipital gyrus, and the right superior parietal gyrus. Previous research has found similar associations  
453 between measures of speech-in-noise perception and macro-anatomical measures of the cortex in  
454 healthy older adults, which were more focal in nature (Giroud et al., 2018, 2020; Rudner et al., 2019).  
455 Cortical thickness changes as a function of experience, training, pathology, and lifespan and are  
456 therefore subject to plasticity (Engvig et al., 2010; Fjell et al., 2009). It is possible that greater (poorer)  
457 CDTT SRTs in the AD group correspond to a lower number, packing density, and size of cells within  
458 neural columns (Rakic, 1995) in multiple brain regions. These results may support the sensory  
459 deprivation hypothesis insofar as continued impoverished auditory input may have wide-spread effects  
460 across the cortex that manifest as gray matter atrophy. Thus, increasing difficulties understanding  
461 speech-in-noise perception could lead to a structural decline in those brain regions, as suggested by a  
462 recent cross-sectional study in healthy older adults in which lower performance on a speech-in-noise  
463 task was related to lower gray matter volume in brain regions associated with hearing and cognition  
464 (Rudner et al., 2019).

465 An alternative, and equally possible explanation, derives from the fact that a large cortical-subcortical  
466 brain network supporting auditory-cognitive functioning is involved in speech-in-noise processing,  
467 ranging from the auditory brainstem (Anderson et al., 2011, 2013) up to higher areas such as the right  
468 inferior frontal gyrus and the right insula (Bidelman and Howell, 2016), including parietal brain  
469 regions such as the precuneus (Wong et al., 2009). These brain regions involved in speech-in-noise  
470 processing are similar to the brain structures we found were correlated with CDTT SRTs in the present



471 study. Thus, it also is possible that adequate performance on the CDTT depends on intact brain  
472 structures involved in perceiving speech in noise. In other words, it is possible that individuals with  
473 reduced gray matter volume and cortical thickness due to neurodegeneration (i.e., those with AD who  
474 have more atrophy) in those critical brain regions perform worse on the speech-in-noise task due to  
475 less available neural resources. However, longitudinal research and functional imaging is needed to  
476 clarify the direction of dependency.

477 Similar to the study of Giroud et al. (2018) with healthy older adults, we also found associations  
478 between performance on a speech-in-noise measure and brain structures in visual brain areas (i.e.,  
479 volume in the right occipital lobe and cortical thickness in the right lateral occipital gyrus). Visual  
480 system activation occurs during hearing tasks (Giraud and Truy, 2002), especially in individuals with  
481 severe hearing loss such as those using cochlear implants (Giraud et al., 2001). It is possible that  
482 individuals with greater hearing loss rely more on visual speech cues and therefore co-activate visual  
483 areas during speech understanding to a greater extent than those with normal hearing, potentially even  
484 when there are no visual speech cues available. We speculate that this interpretation could be valid in  
485 the present study because most participants had good visual acuity. Nevertheless, we recognize that  
486 there is a distinction between structure and function and that the association between neural activation  
487 and cortical thickness is not straightforward.

488 As mentioned above, we only found very wide-spread and negative associations between CDTT SRTs  
489 and brain structure in the AD group who typically have more pronounced brain atrophy than the SCD  
490 or MCI groups. In the other two groups, we found few and only very focal positive associations  
491 between CDTT SRTs and cortical thickness (SCD: left posterior cingulum, right superior temporal  
492 gyrus; MCI: right superior frontal gyrus, right lateral orbitofrontal gyrus, and anterior cingulum).  
493 Given that participants in these groups likely have less brain atrophy than participants in the AD  
494 group, our findings may indicate that individuals who have more structural integrity in brain regions  
495 involved in cognitive processes (Metzler-Baddeley et al., 2012; Schermuly et al., 2010) and during  
496 speech-in-noise perception (Bidelman and Howell, 2016; Du et al., 2016) might be able to use these  
497 regions to compensate for difficulties understanding speech-in-noise (Rönnberg et al., 2013).

498 Overall, our data provide evidence that speech-in-noise recognition may be disproportionately  
499 impaired in older adults with AD. Our results further show that persons with AD who may have more  
500 structural decline in the frontal, temporal, and parietal lobes perform worse on the CDTT. It is possible  
501 that dementia-related neuropathology, which leads to accelerated decline of brain structures, may  
502 exacerbate or lead to a decline in speech processing in adverse listening conditions. Alternatively,  
503 declines in auditory processing may have wide-spread effects on brain atrophy in older adults with  
504 AD. Longitudinal studies are needed to clarify the direction of these effects.

### 505 **4.3. Limitations**

506 One limitation of the present study is that standard pure-tone audiometric thresholds were not obtained  
507 in COMPASS-ND because of the time-efficient audiometric screening protocol that was used. The  
508 resulting pure-tone hearing loss categories pose some challenges for parametric statistical analyses  
509 because of their categorical nature and do not allow the computation of conventional pure-tone  
510 averages which are typically used in similar studies. However, we were able to validate the hearing  
511 loss categories by demonstrating that they mapped to grades of hearing determined based on full  
512 audiograms in two independent samples of older adults. Additionally, we have limited information  
513 about the hearing aid usage or the length (e.g., age of onset) or nature (e.g., etiology) of hearing loss.

514 A second limitation of the present study is the risk of Type I error given the large number of  
515 correlations that were examined. In our FreeSurfer analysis, we used an adjusted  $p$ -value ( $p < .001$ ) to  
516 correct for multiple comparisons as has been done in previous research in which cortical thickness was  
517 examined as a function of hearing-related disorders such as Tinnitus (Meyer et al., 2016; Vanneste et  
518 al., 2015). A family-wise error correction or similar approaches such as Bonferroni correction would  
519 have been more rigorous in controlling Type I error; however, some epidemiologists and  
520 biostatisticians argue that these approaches might be too conservative (Perneger, 1998; VanderWeele  
521 and Mathur, 2019). The correlations conducted between the hearing measures and hippocampal  
522 volume did not survive Bonferroni correction, while the correlations between hearing loss category  
523 and CDTT SRTs do. We therefore recommend using larger datasets, for example with more data  
524 coming from COMPASS-ND in the future, for this type of research in the future, even though it is  
525 extremely challenging to recruit larger samples in this research.

526 A third shortcoming is the cross-sectional nature of the study. In order to clarify the direction of the  
527 associations between hearing loss and brain volume/thickness, longitudinal data are needed. In the  
528 COMPASS-ND study, longitudinal data are currently being collected from the same participants.  
529 Thus, the current report is a first step toward understanding the possible effects of two measures of  
530 hearing loss on brain structures in three selected diagnostic groups.

531 Finally, our findings may not generalize to individuals with SCD, MCI, and AD in the general  
532 population. Currently, our diagnostic groups have skewed sex ratios, which may not be representative  
533 of the diagnostic groups. Also, our participants were self-selected volunteers who agreed to be in a  
534 research study involving the administration of an extensive test battery.

### 535 **4.4. Conclusion**

536 Our study investigated the association between two measures of hearing loss and brain structure in  
537 older adults with or at risk for dementia across three diagnostic groups (SCD, MCI, AD). In those  
538 older adults with cognitive complaints only (SCD), those with greater pure-tone hearing loss had  
539 lower hippocampal volumes (a biomarker of dementia) and greater cortical thickness in auditory and

540 higher-order language-related areas, potentially reflecting the effects of compensation. No such  
541 associations between pure-tone hearing loss category and brain structure were found in the MCI or AD  
542 groups. Taken together, we suggest that hearing loss is associated with reductions in hippocampal  
543 volume early in the dementia-risk spectrum and that AD-related pathological atrophy comes obscure  
544 the neuroanatomical effects of pure-tone hearing loss in later disease stages. Confirmation of this  
545 hypothesis awaits longitudinal data. Nevertheless, in the AD group only, we found that those with  
546 greater (worse) CDTT SRTs exhibited lower cortical thickness globally in both hemispheres. It is  
547 therefore possible that an age-related decline in speech-in-noise understanding may result in declines  
548 in brain structures in older adults who have (mild) cognitive impairment. Alternatively, and because  
549 the AD group performed slightly worse in the speech-in-noise task compared to the SCD group, it is  
550 also possible that dementia-related atrophy in brain regions supporting auditory processing leads to a  
551 decline in speech-in-noise understanding. Longitudinal research is needed to clarify the potential  
552 causal mechanisms. Our work extends the research on hearing-brain associations to include those who  
553 have subjective or objective cognitive complaints and suggests that these relationships evolve as  
554 disease progresses.

#### 555 **Acknowledgments**

556 This research was supported by an infrastructure and operating grant to the CCNA from the Canadian  
557 Institutes of Health Research (CIHR) (Grant no. CNA-137794). This grant supports the COMPASS-  
558 ND study and the work of CCNA Team 17 principal investigators (NP, KPF, PM, JBO, WW) and  
559 trainees (NG, FA, SR). NG was supported by an Early Postdoc Mobility grant from the Swiss  
560 National Science Foundation (grant nr. P2ZHP1\_174865). We gratefully acknowledge the important  
561 contributions of the COMPASS-ND PIT team, especially Victor Whitehead. We are grateful to  
562 Samantha Bishundayal and the Phillips CAP Lab for their contributions. We thank the COMPASS-ND  
563 research participants and site staff for their time. The data for the COMPASS-ND hearing loss  
564 validation was made possible using the data collected by the Canadian Longitudinal Study on Aging  
565 (CLSA). Funding for the CLSA is provided by the Government of Canada through the CIHR under  
566 grant reference: LSA 94473 and the Canada Foundation for Innovation. Part of this research has been  
567 conducted using the CLSA Baseline Comprehensive dataset version 3.2, under Application Number  
568 160605. The CLSA is led by Drs. Parminder Raina, Christina Wolfson, and Susan Kirkland. The  
569 opinions expressed in this manuscript are the authors' own and do not reflect the views of the  
570 Canadian Longitudinal Study on Aging.

571

572

573 **Table Captions**

574

*Table 1:*

Summary statistics on demographic, vision, and health variables for COMPASS-ND participants by diagnostic groups.

*Table 2:*

Validation of the 6-level hearing classification system used in the current study. Table 2 demonstrates the pure-tone averages (1, 2, 3, and 4 kHz) of participants in the Canadian Longitudinal Study on Aging when the classification system was applied to them.

*Table 3:*

Parametric partial correlations (controlling for age, sex, and education) between pure-tone hearing loss category or CDTT SRTs (controlled also for hearing loss category) and hippocampal volume are shown separately for each cognitive diagnostic group.

*Table 4:*

575 Table 4 shows the significant associations between pure-tone hearing loss category or the CDTT SRTs  
576 and cortical thickness for the three diagnostic groups: subjective cognitive decline (SCD), mild  
577 cognitive impairment (MCI), and Alzheimer's dementia (AD). The  $\log_{10}(p)$  at each vertex was set to  
578 3 (values > 3 correspond to  $p < .001$ ).

579

580 **Figure Captions**

*Figure 1:*

581 Figure 1 depicts the pure-tone hearing loss categories and the CDTT SRTs for participants in the three  
582 diagnostic groups (SCD: subjective cognitive decline; MCI: mild cognitive impairment; AD:  
583 Alzheimer's dementia). There was no significant difference in pure-tone hearing loss category  
584 between the three cognitive diagnostic groups, but the ANOVA indicated differences in CDTT SRTs  
585 between groups which were higher (worse performance) in the AD compared to the SCD group  
586 (controlling for age, sex, education, and HL category). The boxplot lines represent the group median  
587 (thick line) and the 25<sup>th</sup> and 75<sup>th</sup> percentiles (outer lines). Dots represent results for individual  
588 participants.

*Figure 2:*

589 Figure 2 shows the associations between pure-tone hearing loss category and the CDTT SRTs for the  
590 three diagnostic groups (subjective cognitive decline (SCD), mild cognitive impairment (MCI), and

591 Alzheimer's dementia (AD)). Significant positive associations were found in the SCD group ( $R^2=.41$ )  
592 and the MCI group ( $R^2=.49$ ), and associations approached significance ( $p < .1$ ) in the AD group  
593 ( $R^2=.18$ ). Grey areas indicate 95% confidence intervals.

*Figure 3:*

594 Figure 3 shows the correlations between pure-tone hearing loss category (A) or the CDTT SRTs (B)  
595 and hippocampal volume ( $\text{mm}^3$ ). In the subjective cognitive decline (SCD) group (top), there was a  
596 significant association, with greater hearing loss associated with lower right hippocampal volume,  
597 marked with colored square ( $*p < .05$ ). No significant associations between pure-tone hearing loss  
598 category or the CDTT SRTs and the hippocampal volume were found in MCI and AD. Grey areas  
599 indicate 95% confidence intervals. Also shown are results for the MCI (mild cognitive impairment)  
600 group (middle panel) and the AD (Alzheimer's dementia) group (lower panel).

*Figure 4:*

601 Figure 4 depicts the significant associations between pure-tone hearing loss category and cortical  
602 thickness (CT) in the three diagnostic groups (subjective cognitive decline (SCD); mild cognitive  
603 impairment (MCI); Alzheimer's dementia (AD)). Red = positive association. Blue = negative  
604 association. For graphical purposes, the  $\log_{10}(p)$  at each vertex was set to 2 (values  $> 2$  correspond to  
605  $p < .01$ ), while the  $p$ -value was lowered to  $p < .001$  to control for multiple comparisons in Table 5  
606 where the significant brain clusters are listed. Significant ( $p < .001$ ) positive correlations (i.e., greater  
607 pure-tone hearing loss and greater CT) were found in the SCD group for the left superior temporal  
608 gyrus and the right pars opercularis (indicated with circles).

*Figure 5:*

609 Figure 5 shows the significant associations between CDTT SRTs and cortical thickness (CT) in the  
610 three diagnostic groups (subjective cognitive decline (SCD); mild cognitive impairment (MCI);  
611 Alzheimer's dementia (AD)). Red = positive association. Blue = negative association. The  $\log_{10}(p)$  at  
612 each vertex was set to 2 for the figure (values  $> 2$  correspond to  $p < .01$ ), while the  $p$ -value was  
613 lowered to  $p < .001$  to control for multiple comparisons in Table 5 where the significant brain clusters  
614 are listed. Significant associations at  $p < .001$  were found as indicated with circles.

615

## References

- 616  
617 Albers, M.W., Gilmore, G.C., Kaye, J., Murphy, C., Wingfield, A., Bennett, D.A., Boxer, A.L.,  
618 Buchman, A.S., Cruickshanks, K.J., Devanand, D.P., et al. (2015). At the interface of sensory and  
619 motor dysfunctions and Alzheimer's disease. *Alzheimers Dement.* *11*, 70–98.
- 620 Albert, M.S., DeKosky, S.T., Dickson, D., Dubois, B., Feldman, H.H., Fox, N.C., Gamst, A.,  
621 Holtzman, D.M., Jagust, W.J., Petersen, R.C., et al. (2011). The diagnosis of mild cognitive  
622 impairment due to Alzheimer's disease: Recommendations from the National Institute on Aging-  
623 Alzheimer's Association workgroups on diagnostic guidelines for Alzheimer's disease. *Alzheimers*  
624 *Dement.* *7*, 270–279.
- 625 Alfordari, D., Vriend, C., Heslenfeld, D.J., Versfeld, N.J., Kramer, S.E., and Zekveld, A.A. (2018).  
626 Brain Volume Differences Associated With Hearing Impairment in Adults. *Trends Hear.* *22*.
- 627 Al-Yawer, F., Bruce, H., Li, K.Z.H., Pichora-Fuller, M.K., and Phillips, N.A. (submitted). Sex  
628 differences in the associations between neuropsychological test scores and pure-tone and speech-in-  
629 noise measures of hearing. *J. Gerontol. A. Biol. Sci. Med. Sci.*
- 630 Anderson, S., Parbery-Clark, A., Yi, H.-G., and Kraus, N. (2011). A Neural Basis of Speech-in-Noise  
631 Perception in Older Adults. *Ear Hear.* *32*, 750–757.
- 632 Anderson, S., White-Schwoch, T., Parbery-Clark, A., and Kraus, N. (2013). A dynamic auditory-  
633 cognitive system supports speech-in-noise perception in older adults. *Hear. Res.* *300*, 18–32.
- 634 Arlinger, S. (2003). Negative consequences of uncorrected hearing loss—a review. *Int. J. Audiol.* *42*,  
635 17–20.
- 636 Armstrong, N.M., An, Y., Doshi, J., Erus, G., Ferrucci, L., Davatzikos, C., Deal, J.A., Lin, F.R., and  
637 Resnick, S.M. (2019). Association of Midlife Hearing Impairment With Late-Life Temporal Lobe  
638 Volume Loss. *JAMA Otolaryngol. Neck Surg.* *145*, 794–802.
- 639 Bidelman, G.M., and Howell, M. (2016). Functional changes in inter- and intra-hemispheric cortical  
640 processing underlying degraded speech perception. *NeuroImage* *124*, 581–590.
- 641 Brookmeyer, R., Gray, S., and Kawas, C. (1998). Projections of Alzheimer's disease in the United  
642 States and the public health impact of delaying disease onset. *Am. J. Public Health* *88*, 1337–1342.
- 643 Caillaud, M., Hudon, C., Boller, B., Brambati, S., Duchesne, S., Lorrain, D., Gagnon, J.-F., Maltezos,  
644 S., Mellah, S., Phillips, N., et al. (2019). Evidence of a Relation Between Hippocampal Volume,  
645 White Matter Hyperintensities, and Cognition in Subjective Cognitive Decline and Mild Cognitive  
646 Impairment. *J. Gerontol. Ser. B.*
- 647 Callan, D.E., Callan, A.M., Kroos, C., and Vatikiotis-Bateson, E. (2001). Multimodal contribution to  
648 speech perception revealed by independent component analysis: a single-sweep EEG case study. *Brain*  
649 *Res. Cogn. Brain Res.* *10*, 349–353.
- 650 Cardinale, F., Chinnici, G., Bramerio, M., Mai, R., Sartori, I., Cossu, M., Lo Russo, G., Castana, L.,  
651 Colombo, N., Caborni, C., et al. (2014). Validation of FreeSurfer-Estimated Brain Cortical Thickness:  
652 Comparison with Histologic Measurements. *Neuroinformatics* *12*, 535–542.
- 653 Chertkow, H., Borrie, M., Whitehead, V., Black, S.E., Feldman, H.H., Gauthier, S., Hogan, D.B.,  
654 Masellis, M., McGilton, K., Rockwood, K., et al. (2019). The Comprehensive Assessment of  
655 Neurodegeneration and Dementia: Canadian Cohort Study. *Can. J. Neurol. Sci. J. Can. Sci. Neurol.*  
656 *46*, 499–511.

- 657 Collins, D.L., and Pruessner, J.C. (2010). Towards accurate, automatic segmentation of the  
658 hippocampus and amygdala from MRI by augmenting ANIMAL with a template library and label  
659 fusion. *Neuroimage* 52, 1355–1366.
- 660 Collins, D.L., Holmes, C.J., Peters, T.M., and Evans, A.C. (1995). Automatic 3-D model-based  
661 neuroanatomical segmentation. *Hum. Brain Mapp.* 3, 190–208.
- 662 Colsher, P.L., and Wallace, R.B. (1990). Are hearing and visual dysfunction associated with cognitive  
663 impairment? A population-based approach. *J. Appl. Gerontol.* 9, 91–105.
- 664 Curhan, S.G., Willett, W.C., Grodstein, F., and Curhan, G.C. (2019). Longitudinal study of hearing  
665 loss and subjective cognitive function decline in men. *Alzheimers Dement.*
- 666 Dale, A.M., Fischl, B., and Sereno, M.I. (1999). Cortical Surface-Based Analysis; I. Segmentation and  
667 Surface Reconstruction. *NeuroImage* 9, 179–194.
- 668 Deal, J.A., Sharrett, A.R., Albert, M.S., Coresh, J., Mosley, T.H., Knopman, D., Wruck, L.M., and  
669 Lin, F.R. (2015). Hearing impairment and cognitive decline: a pilot study conducted within the  
670 atherosclerosis risk in communities neurocognitive study. *Am. J. Epidemiol.* 181, 680–690.
- 671 Deal, J.A., Betz, J., Yaffe, K., Harris, T., Purchase-Helzner, E., Satterfield, S., Pratt, S., Govil, N.,  
672 Simonsick, E.M., and Lin, F.R. (2016). Hearing impairment and incident dementia and cognitive  
673 decline in older adults: the health ABC study. *J. Gerontol. Ser. Biomed. Sci. Med. Sci.* 72, 703–709.
- 674 Deal, J.A., Goman, A.M., Albert, M.S., Arnold, M.L., Burgard, S., Chisolm, T., Couper, D., Glynn,  
675 N.W., Gmelin, T., Hayden, K.M., et al. (2018). Hearing treatment for reducing cognitive decline:  
676 Design and methods of the Aging and Cognitive Health Evaluation in Elders randomized controlled  
677 trial. *Alzheimers Dement. Transl. Res. Clin. Interv.* 4, 499–507.
- 678 Deal, J.A., Reed, N.S., Kravetz, A.D., Weinreich, H., Yeh, C., Lin, F.R., and Altan, A. (2019).  
679 Incident Hearing Loss and Comorbidity: A Longitudinal Administrative Claims Study. *JAMA*  
680 *Otolaryngol. Neck Surg.* 145, 36–43.
- 681 Du, Y., Buchsbaum, B.R., Grady, C.L., and Alain, C. (2016). Increased activity in frontal motor cortex  
682 compensates impaired speech perception in older adults. *Nat. Commun.* 7.
- 683 Dubno, J.R., Eckert, M.A., Lee, F.-S., Matthews, L.J., and Schmiedt, R.A. (2013). Classifying Human  
684 Audiometric Phenotypes of Age-Related Hearing Loss from Animal Models. *J. Assoc. Res.*  
685 *Otolaryngol.* 14, 687–701.
- 686 Duchesne, S., Chouinard, I., Potvin, O., Fonov, V.S., Khademi, A., Bartha, R., Bellec, P., Collins,  
687 D.L., Descoteaux, M., Hoge, R., et al. (2019). The Canadian Dementia Imaging Protocol:  
688 Harmonizing National Cohorts. *J. Magn. Reson. Imaging* 49, 456–465.
- 689 Eckert, M.A., Cute, S.L., Vaden, K.I., Kuchinsky, S.E., and Dubno, J.R. (2012). Auditory Cortex  
690 Signs of Age-Related Hearing Loss. *JARO J. Assoc. Res. Otolaryngol.* 13, 703–713.
- 691 Eckert, M.A., Vaden Jr, K.I., and Dubno, J.R. (2019). Age-Related Hearing Loss Associations With  
692 Changes in Brain Morphology. *Trends Hear.* 23, 2331216519857267.
- 693 Ellaham, N., Giguère, C., Lagacé, J., and Pichora-Fuller, M.K. (2016). A software platform to  
694 administer the Canadian Digit Triplet Test. *Can. Acoust.* 44.
- 695 Engvig, A., Fjell, A.M., Westlye, L.T., Moberget, T., Sundseth, Ø., Larsen, V.A., and Walhovd, K.B.  
696 (2010). Effects of memory training on cortical thickness in the elderly. *NeuroImage* 52, 1667–1676.

- 697 Fernández, G., Effern, A., Grunwald, T., Pezer, N., Lehnertz, K., Dümpelmann, M., Roost, D.V., and  
698 Elger, C.E. (1999). Real-Time Tracking of Memory Formation in the Human Rhinal Cortex and  
699 Hippocampus. *Science* 285, 1582–1585.
- 700 Fischer, M.E., Cruickshanks, K.J., Schubert, C.R., Pinto, A.A., Carlsson, C.M., Klein, B.E.K., Klein,  
701 R., and Tweed, T.S. (2016). Age-Related Sensory Impairments and Risk of Cognitive Impairment. *J.*  
702 *Am. Geriatr. Soc.* 64, 1981–1987.
- 703 Fischl, B., and Dale, A.M. (2000). Measuring the thickness of the human cerebral cortex from  
704 magnetic resonance images. *Proc. Natl. Acad. Sci.* 97, 11050–11055.
- 705 Fischl, B., Sereno, M.I., and Dale, A.M. (1999). Cortical Surface-Based Analysis; II. Inflation,  
706 Flattening, and a Surface-Based Coordinate System. *NeuroImage* 9, 195–207.
- 707 Fischl, B., Salat, D.H., Busa, E., Albert, M., Dieterich, M., Haselgrove, C., Van Der Kouwe, A.,  
708 Killiany, R., Kennedy, D., Klaveness, S., et al. (2002). Whole brain segmentation: automated labeling  
709 of neuroanatomical structures in the human brain. *Neuron* 33, 341–355.
- 710 Fischl, B., Van Der Kouwe, A., Destrieux, C., Halgren, E., Ségonne, F., Salat, D.H., Busa, E.,  
711 Caviness, V., Makris, N., Rosen, B., et al. (2004). Automatically Parcellating the Human Cerebral  
712 Cortex. *Cereb. Cortex* 14, 11–22.
- 713 Fjell, A.M., Walhovd, K.B., Fennema-Notestine, C., McEvoy, L.K., Hagler, D.J., Holland, D.,  
714 Brewer, J.B., and Dale, A.M. (2009). One-Year Brain Atrophy Evident in Healthy Aging. *J. Neurosci.*  
715 29, 15223–15231.
- 716 Fortunato, S., Forli, F., Guglielmi, V., De Corso, E., Paludetti, G., Berrettini, S., and Fetoni, A.R.  
717 (2016). A review of new insights on the association between hearing loss and cognitive decline in  
718 ageing. *Acta Otorhinolaryngol. Ital. Organo Uff. Della Soc. Ital. Otorinolaringol. E Chir. Cerv.-Facc.*  
719 36, 155–166.
- 720 de la Fuente, J., Hjelmberg, J., Wod, M., de la Torre-Luque, A., Caballero, F.F., Christensen, K., and  
721 Ayuso-Mateos, J.L. (2019). Longitudinal Associations of Sensory and Cognitive Functioning: A  
722 Structural Equation Modeling Approach. *J. Gerontol. B. Psychol. Sci. Soc. Sci.* 74, 1308–1316.
- 723 Gates, Anderson, McCurry, Feeney, and Larson (2011). Central auditory dysfunction as a harbinger of  
724 alzheimer dementia. *Arch. Otolaryngol. Neck Surg.* 137, 390–395.
- 725 Giguère, C., Lagacé, J., Ellaham, N.N., Pichora-Fuller, M.K., Goy, H., Bégin, C., Alary, É., and  
726 Bowman, R. (2020). Development of the Canadian Digit Triplet Test in English and French. *J. Acoust.*  
727 *Soc. Am.* 147, EL252–EL258.
- 728 Giraud, A.-L., and Truy, E. (2002). The contribution of visual areas to speech comprehension: a PET  
729 study in cochlear implants patients and normal-hearing subjects. *Neuropsychologia* 40, 1562–1569.
- 730 Giraud, A.-L., Price, C.J., Graham, J.M., Truy, E., and Frackowiak, R.S. (2001). Cross-modal  
731 plasticity underpins language recovery after cochlear implantation. *Neuron* 30, 657–663.
- 732 Giroud, N., Hirsiger, S., Muri, R., Kegel, A., Dillier, N., and Meyer, M. (2018). Neuroanatomical and  
733 resting state EEG power correlates of central hearing loss in older adults. *Brain Struct. Funct.* 223,  
734 145–163.
- 735 Giroud, N., Keller, M., Hirsiger, S., Dellwo, V., and Meyer, M. (2019). Bridging the brain structure—  
736 brain function gap in prosodic speech processing in older adults. *Neurobiol. Aging* 80, 116–126.



- 737 Giroud, N., Keller, M., and Meyer, M. (2020). Interacting effects of frontal lobe neuroanatomy and  
738 working memory capacity to older listeners' speech recognition in noise. *BioRxiv* 2020.09.14.296343.
- 739 Glodzik-Sobanska, L., Reisberg, B., Santi, S.D., Babb, J.S., Pirraglia, E., Rich, K.E., Brys, M., and  
740 Leon, M.J. de (2007). Subjective Memory Complaints: Presence, Severity and Future Outcome in  
741 Normal Older Subjects. *Dement. Geriatr. Cogn. Disord.* *24*, 177–184.
- 742 Griffiths, T.D., Lad, M., Kumar, S., Holmes, E., McMurray, B., Maguire, E.A., Billig, A.J., and  
743 Sedley, W. (2020). How Can Hearing Loss Cause Dementia? *Neuron* S0896627320306103.
- 744 Herrmann, B., and Butler, B. (2020). Hearing Loss and Brain Plasticity: The Hyperexcitability  
745 Phenomenon.
- 746 Hickok, G., and Poeppel, D. (2007). The cortical organization of speech processing. *Nat. Rev.*  
747 *Neurosci.* *8*, 393–402.
- 748 Hughes, C.P., Berg, L., Danziger, W.L., Coben, L.A., and Martin, R.L. (1982). A new clinical scale  
749 for the staging of dementia. *Br. J. Psychiatry J. Ment. Sci.* *140*, 566–572.
- 750 Idrizbegovic, E., Hederstierna, C., Dahlquist, M., Kämpfe Nordström, C., Jelic, V., and Rosenhall, U.  
751 (2011). Central auditory function in early Alzheimer's disease and in mild cognitive impairment. *Age*  
752 *Ageing* *40*, 249–254.
- 753 International Organization for Standardization (ISO) (2017). ISO 7029:2017 Acoustics - Statistical  
754 distribution of hearing thresholds related to age and gender (Geneva: International Organization of  
755 Standards).
- 756 Jessen, F., Wiese, B., Bachmann, C., Eifflaender-Gorfer, S., Haller, F., Kölsch, H., Luck, T., Mösch,  
757 E., van den Bussche, H., Wagner, M., et al. (2010). Prediction of dementia by subjective memory  
758 impairment: effects of severity and temporal association with cognitive impairment. *Arch. Gen.*  
759 *Psychiatry* *67*, 414–422.
- 760 Jessen, F., Amariglio, R.E., van Boxtel, M., Breteler, M., Ceccaldi, M., Chételat, G., Dubois, B.,  
761 Dufouil, C., Ellis, K.A., van der Flier, W.M., et al. (2014). A conceptual framework for research on  
762 subjective cognitive decline in preclinical Alzheimer's disease. *Alzheimers Dement. J. Alzheimers*  
763 *Assoc.* *10*, 844–852.
- 764 Joanisse, M.F., and Gati, J.S. (2003). Overlapping neural regions for processing rapid temporal cues in  
765 speech and nonspeech signals. *NeuroImage* *19*, 64–79.
- 766 Leff, A.P., Schofield, T.M., Crinion, J.T., Seghier, M.L., Grogan, A., Green, D.W., and Price, C.J.  
767 (2009). The left superior temporal gyrus is a shared substrate for auditory short-term memory and  
768 speech comprehension: evidence from 210 patients with stroke. *Brain* *132*, 3401–3410.
- 769 Liberman, M.C., and Kujawa, S.G. (2017). Cochlear synaptopathy in acquired sensorineural hearing  
770 loss: Manifestations and mechanisms. *Hear. Res.* *349*, 138–147.
- 771 Liem, F., Méritat, S., Bezzola, L., Hirsiger, S., Philipp, M., Madhyastha, T., and Jäncke, L. (2015).  
772 Reliability and statistical power analysis of cortical and subcortical FreeSurfer metrics in a large  
773 sample of healthy elderly. *NeuroImage* *108*, 95–109.
- 774 Lin, F.R., and Albert, M. (2014). Hearing loss and dementia - who is listening? *Aging Ment. Health*  
775 *18*, 671–673.
- 776 Lin, F.R., Metter, E.J., O'Brien, R.J., Resnick, S.M., Zonderman, A.B., and Ferrucci, L. (2011a).  
777 Hearing loss and incident dementia. *Arch. Neurol.* *68*, 214–220.

- 778 Lin, F.R., Ferrucci, L., Jeffrey, E., An, Y., Zonderman, A.B., and Resnick, S.M. (2011b). Hearing loss  
779 and cognition in the Baltimore Longitudinal Study of Aging. *Neuropsychology* 25, 763–770.
- 780 Lin, F.R., Ferrucci, L., An, Y., Goh, J.O., Doshi, J., Metter, E.J., Davatzikos, C., Kraut, M.A., and  
781 Resnick, S.M. (2014). Association of hearing impairment with brain volume changes in older adults.  
782 *NeuroImage* 90, 84–92.
- 783 Lindenberger, U., and Baltes, P.B. (1994). Sensory Functioning and Intelligence in Old Age: A Strong  
784 Connection. *Psychol. Aging* 9, 339–355.
- 785 Livingston, G., Sommerlad, A., Orgeta, V., Costafreda, S.G., Huntley, J., Ames, D., Ballard, C.,  
786 Banerjee, S., Burns, A., Cohen-Mansfield, J., et al. (2017). Dementia prevention, intervention, and  
787 care. *The Lancet* 390, 2673–2734.
- 788 Livingston, G., Huntley, J., Sommerlad, A., Ames, D., Ballard, C., Banerjee, S., Brayne, C., Burns, A.,  
789 Cohen-Mansfield, J., Cooper, C., et al. (2020). Dementia prevention, intervention, and care: 2020  
790 report of the Lancet Commission. *The Lancet* 396, 413–446.
- 791 Mathers, C., Fat, D.M., and Boerma, J.T. (2008). The global burden of disease: 2004 update (Geneva,  
792 Switzerland: World Health Organization).
- 793 McCoy, S.L., Tun, P.A., Cox, L.C., Colangelo, M., Stewart, R.A., and Wingfield, A. (2005). Hearing  
794 loss and perceptual effort: Downstream effects on older adults' memory for speech. *Q. J. Exp.*  
795 *Psychol. Sect. A* 58, 22–33.
- 796 McKhann, G.M., Knopman, D.S., Chertkow, H., Hyman, B.T., Jack, C.R., Kawas, C.H., Klunk, W.E.,  
797 Koroshetz, W.J., Manly, J.J., Mayeux, R., et al. (2011). The diagnosis of dementia due to Alzheimer's  
798 disease: recommendations from the National Institute on Aging-Alzheimer's Association workgroups  
799 on diagnostic guidelines for Alzheimer's disease. *Alzheimers Dement. J. Alzheimers Assoc.* 7, 263–  
800 269.
- 801 Merten, N., Fischer, M.E., Tweed, T.S., Breteler, M.M.B., and Cruickshanks, K.J. (2019).  
802 Associations of Hearing Sensitivity, Higher-order Auditory Processing, and Cognition over Time in  
803 Middle-aged Adults. *J. Gerontol. A. Biol. Sci. Med. Sci.*
- 804 Metzler-Baddeley, C., Jones, D.K., Steventon, J., Westacott, L., Aggleton, J.P., and O'Sullivan, M.J.  
805 (2012). Cingulum Microstructure Predicts Cognitive Control in Older Age and Mild Cognitive  
806 Impairment. *J. Neurosci.* 32, 17612–17619.
- 807 Meyer, M., Alter, K., Friederici, A.D., Lohmann, G., and Cramon, D.Y. von (2002). fMRI reveals  
808 brain regions mediating slow prosodic modulations in spoken sentences. *Hum. Brain Mapp.* 17, 73–  
809 88.
- 810 Meyer, M., Neff, P., Liem, F., Kleinjung, T., Weidt, S., Langguth, B., and Schecklmann, M. (2016).  
811 Differential tinnitus-related neuroplastic alterations of cortical thickness and surface area. *Hear. Res.*  
812 342, 1–12.
- 813 Mills, J., Schmiedt, R., Schulte, B., and Dubno, J. (2006). Age-Related Hearing Loss: A Loss of  
814 Voltage, Not Hair Cells. *Semin. Hear.* 27, 228–236.
- 815 Möttönen, R., Krause, C.M., Tiippana, K., and Sams, M. (2002). Processing of changes in visual  
816 speech in the human auditory cortex. *Brain Res.* 13, 417–425.
- 817 Nasreddine, Z.S., Phillips, N.A., Bédirian, V., Charbonneau, S., Whitehead, V., Collin, I., Cummings,  
818 J.L., and Chertkow, H. (2005). The Montreal Cognitive Assessment, MoCA: a brief screening tool for  
819 mild cognitive impairment. *J. Am. Geriatr. Soc.* 53, 695–699.

- 820 van Oijen, M., de Jong, F.J., Hofman, A., Koudstaal, P.J., and Breteler, M.M.B. (2007). Subjective  
821 memory complaints, education, and risk of Alzheimer's disease. *Alzheimers Dement.* *3*, 92–97.
- 822 Okely, J.A., Akeroyd, M.A., Allerhand, M., Starr, J.M., and Deary, I.J. (2019). Longitudinal  
823 associations between hearing loss and general cognitive ability: The Lothian Birth Cohort 1936.  
824 *Psychol. Aging* *34*, 766–779.
- 825 Omata, Y., Tharasegaran, S., Lim, Y.-M., Yamasaki, Y., Ishigaki, Y., Tatsuno, T., Maruyama, M., and  
826 Tsuda, L. (2016). Expression of amyloid- $\beta$  in mouse cochlear hair cells causes an early-onset auditory  
827 defect in high-frequency sound perception. *Aging* *8*, 427–439.
- 828 Osler, M., Christensen, G.T., Mortensen, E.L., Christensen, K., Garde, E., and Rosing, M.P. (2019).  
829 Hearing loss, cognitive ability, and dementia in men age 19–78 years. *Eur. J. Epidemiol.* *34*, 125–130.
- 830 Peelle, J.E., and Wingfield, A. (2016). The Neural Consequences of Age-Related Hearing Loss.  
831 *Trends Neurosci.* *39*, 486–497.
- 832 Perneger, T.V. (1998). What's wrong with Bonferroni adjustments. *BMJ* *316*, 1236–1238.
- 833 Pichora-Fuller, M.K., Mick, P., and Reed, M. (2015). Hearing, cognition, and healthy aging: Social  
834 and public health implications of the links between age-related declines in hearing and cognition. In  
835 *Seminars in Hearing*, (Thieme Medical Publishers), pp. 122–139.
- 836 Pichora-Fuller, M.K., Alain, C., and Schneider, B.A. (2017). Older Adults at the Cocktail Party. In  
837 *The Auditory System at the Cocktail Party*, J.C. Middlebrooks, J.Z. Simon, A.N. Popper, and R.R.  
838 Fay, eds. (Berlin: Springer), pp. 227–259.
- 839 Pini, L., Pievani, M., Bocchetta, M., Altomare, D., Bosco, P., Cavedo, E., Galluzzi, S., Marizzoni, M.,  
840 and Frisoni, G.B. (2016). Brain atrophy in Alzheimer's Disease and aging. *Ageing Res. Rev.* *30*, 25–  
841 48.
- 842 Poeppel, D., Guillemin, A., Thompson, J., Fritz, J., Bavelier, D., and Braun, A.R. (2004). Auditory  
843 lexical decision, categorical perception, and FM direction discrimination differentially engage left and  
844 right auditory cortex. *Neuropsychologia* *42*, 183–200.
- 845 Profant, O., Škoch, A., Balogová, Z., Tintěra, J., Hlinka, J., and Syka, J. (2014). Diffusion tensor  
846 imaging and MR morphometry of the central auditory pathway and auditory cortex in aging.  
847 *Neuroscience* *260*, 87–97.
- 848 Pronk, M., Lissenberg-Witte, B.I., van der Aa, H.P.A., Comijs, H.C., Smits, C., Lemke, U., Zekveld,  
849 A.A., and Kramer, S.E. (2019). Longitudinal Relationships Between Decline in Speech-in-Noise  
850 Recognition Ability and Cognitive Functioning: The Longitudinal Aging Study Amsterdam. *J. Speech*  
851 *Lang. Hear. Res.* *62*, 1167–1187.
- 852 Quaranta, N., Coppola, F., Casulli, M., Barulli, O., Lanza, F., Tortelli, R., Capozzo, R., Leo, A., Tursi,  
853 M., Grasso, A., et al. (2014). The Prevalence of Peripheral and Central Hearing Impairment and Its  
854 Relation to Cognition in Older Adults. *Audiol. Neurotol.* *19*, 10–14.
- 855 Raina, P.S., Wolfson, C., Kirkland, S.A., Griffith, L.E., Oremus, M., Patterson, C., Tuokko, H.,  
856 Penning, M., Balion, C.M., Hogan, D., et al. (2009). The Canadian longitudinal study on aging  
857 (CLSA). *Can. J. Aging Rev. Can. Vieil.* *28*, 221–229.
- 858 Rakic, P. (1995). A small step for the cell, a giant leap for mankind: a hypothesis of neocortical  
859 expansion during evolution. *Trends Neurosci.* *18*, 383–388.

- 860 Ray, J., Popli, G., and Fell, G. (2018). Association of cognition and age-related hearing impairment in  
861 the english longitudinal study of ageing. *JAMA Otolaryngol. Neck Surg.* *144*, 876–882.
- 862 Reisberg, B., Shulman, M.B., Torossian, C., Leng, L., and Zhu, W. (2010). Outcome over seven years  
863 of healthy adults with and without subjective cognitive impairment. *Alzheimers Dement.* *6*, 11–24.
- 864 Ren, F., Ma, W., Li, M., Sun, H., Xin, Q., Zong, W., Chen, W., Wang, G., Gao, F., and Zhao, B.  
865 (2018). Gray Matter Atrophy Is Associated With Cognitive Impairment in Patients With Presbycusis:  
866 A Comprehensive Morphometric Study. *Front. Neurosci.* *12*.
- 867 Rigtters, S.C., Bos, D., Metselaar, M., Roshchupkin, G.V., Baatenburg de Jong, R.J., Ikram, M.A.,  
868 Vernooij, M.W., and Goedegebure, A. (2017). Hearing Impairment Is Associated with Smaller Brain  
869 Volume in Aging. *Front. Aging Neurosci.* *9*, 2.
- 870 Rigtters, S.C., Cremers, L.G.M., Ikram, M.A., van der Schroeff, M.P., de Groot, M., Roshchupkin,  
871 G.V., Niessen, W.J.N., Baatenburg de Jong, R.J., Goedegebure, A., and Vernooij, M.W. (2018).  
872 White-matter microstructure and hearing acuity in older adults: a population-based cross-sectional DTI  
873 study. *Neurobiol. Aging* *61*, 124–131.
- 874 Roberts, R., and Knopman, D.S. (2013). Classification and Epidemiology of MCI. *Clin. Geriatr. Med.*  
875 *29*, 753–772.
- 876 Rönnerberg, J., Lunner, T., Zekveld, A., Sörqvist, P., Danielsson, H., Lyxell, B., Dahlström, O.,  
877 Signoret, C., Stenfelt, S., Pichora-Fuller, M.K., et al. (2013). The Ease of Language Understanding  
878 (ELU) model: theoretical, empirical, and clinical advances. *Front. Syst. Neurosci.* *7*, 31.
- 879 Rudner, M., Seeto, M., Keidser, G., Johnson, B., and Rönnerberg, J. (2019). Poorer speech reception  
880 threshold in noise is associated with lower brain volume in auditory and cognitive processing regions.  
881 *J. Speech Lang. Hear. Res.* *62*, 1117–1130.
- 882 Sanchez, V.A., Arnold, M.L., Reed, N.S., Oree, P.H., Matthews, C.R., Clock Eddins, A., Lin, F.R.,  
883 and Chisolm, T.H. (2020). The Hearing Intervention for the Aging and Cognitive Health Evaluation in  
884 Elders Randomized Control Trial: Manualization and Feasibility Study. *Ear Hear.* *41*, 1333–1348.
- 885 Sarant, J., Harris, D., Busby, P., Maruff, P., Schembri, A., Lemke, U., and Launer, S. (2020). The  
886 Effect of Hearing Aid Use on Cognition in Older Adults: Can We Delay Decline or Even Improve  
887 Cognitive Function? *J. Clin. Med.* *9*.
- 888 Schermuly, I., Fellgiebel, A., Wagner, S., Yakushev, I., Stoeter, P., Schmitt, R., Knickenberg, R.J.,  
889 Bleichner, F., and Beutel, M.E. (2010). Association between cingulum bundle structure and cognitive  
890 performance: An observational study in major depression. *Eur. Psychiatry* *25*, 355–360.
- 891 Sherif, T., Rioux, P., Rousseau, M.-E., Kassis, N., Beck, N., Adalat, R., Das, S., Glatard, T., and  
892 Evans, A.C. (2014). CBRAIN: a web-based, distributed computing platform for collaborative  
893 neuroimaging research. *Front. Neuroinformatics* *8*.
- 894 Sinha, U.K., Hollen, K.M., Rodriguez, R., and Miller, C.A. (1993). Auditory system degeneration in  
895 Alzheimer’s disease. *Neurology* *43*, 779–785.
- 896 Slachevsky, A., Barraza, P., Hornberger, M., Muñoz-Neira, C., Flanagan, E., Henríquez, F., Bravo, E.,  
897 Farías, M., and Delgado, C. (2018). Neuroanatomical Comparison of the “Word” and “Picture”  
898 Versions of the Free and Cued Selective Reminding Test in Alzheimer’s Disease. *J. Alzheimers Dis.*  
899 *61*, 589–600.
- 900 Tulskey, D.S., Chiaravalloti, N.D., Palmer, B.W., and Chelune, G.J. (2003). Chapter 3 - The Wechsler  
901 Memory Scale, Third Edition: A New Perspective. In *Clinical Interpretation of the WAIS-III and*

- 902 WMS-III, D.S. Tulsky, D.H. Saklofske, R.K. Heaton, R. Bornstein, M.F. Ledbetter, G.J. Chelune, R.J.  
903 Ivnik, and A. Prifitera, eds. (San Diego: Academic Press), pp. 93–139.
- 904 Tuwaig, M., Savard, M., Jutras, B., Poirier, J., Collins, D.L., Rosa-Neto, P., Fontaine, D., Breitner,  
905 J.C.S., and for the PREVENT-AD Research Group (2017). Deficit in Central Auditory Processing as a  
906 Biomarker of Pre-Clinical Alzheimer’s Disease. *J. Alzheimers Dis.* *60*, 1–12.
- 907 Uchida, Y., Nishita, Y., Kato, T., Iwata, K., Sugiura, S., Suzuki, H., Sone, M., Tange, C., Otsuka, R.,  
908 Ando, F., et al. (2018). Smaller Hippocampal Volume and Degraded Peripheral Hearing Among  
909 Japanese Community Dwellers. *Front. Aging Neurosci.* *10*.
- 910 VanderWeele, T.J., and Mathur, M.B. (2019). SOME DESIRABLE PROPERTIES OF THE  
911 BONFERRONI CORRECTION: IS THE BONFERRONI CORRECTION REALLY SO BAD? *Am.*  
912 *J. Epidemiol.* *188*, 617–618.
- 913 Vanneste, S., Heyning, P.V.D., and Ridder, D.D. (2015). Tinnitus: A Large VBM-EEG Correlational  
914 Study. *PLOS ONE* *10*, e0115122.
- 915 Vigneau, M., Beaucousin, V., Hervé, P., Jobard, G., Petit, L., Crivello, F., Mellet, E., Zago, L.M.B.,  
916 and Tzourio-Mazoyer, N. (2011). What is right-hemisphere contribution to phonological, lexico-  
917 semantic, and sentence processing? Insights from a meta-analysis. *NeuroImage* *54*, 577–593.
- 918 Wang, S.-E., and Wu, C.-H. (2015). Physiological and Histological Evaluations of the Cochlea  
919 between 3xTg-AD Mouse Model of Alzheimer’s Diseases and R6/2 Mouse Model of Huntington’s  
920 Diseases. *Chin. J. Physiol.* *58*, 359–366.
- 921 Whitson, H.E., Cronin-Golomb, A., Cruickshanks, K.J., Gilmore, G.C., Owsley, C., Peelle, J.E.,  
922 Recanzone, G., Sharma, A., Swenor, B., Yaffe, K., et al. (2018). American Geriatrics Society and  
923 National Institute on Aging Bench-to-Bedside Conference: Sensory Impairment and Cognitive Decline  
924 in Older Adults. *J. Am. Geriatr. Soc.* *66*, 2052–2058.
- 925 Wong, P.C.M., Jin, J.X., Gunasekera, G.M., Abel, R., Lee, E.R., and Dhar, S. (2009). Aging and  
926 cortical mechanisms of speech perception in noise. *Neuropsychologia* *47*, 693–703.
- 927 Xu, W., Zhang, C., Li, J.-Q., Tan, C.-C., Cao, X.-P., Tan, L., Yu, J.-T., and Alzheimer’s Disease  
928 Neuroimaging Initiative (2019). Age-related hearing loss accelerates cerebrospinal fluid tau levels and  
929 brain atrophy: a longitudinal study. *Aging* *11*, 3156–3169.
- 930

	SCD (N=35)		MCI (N=79)		AD (N=21)				
	N		N		N		X <sup>2</sup>	p	
Female	20 (57 %)		29 (37%)		1 (5%)		15.35	<b>&lt;.001</b>	
Hearing aid users	2 (6%)		13 (17%)		4 (19%)		2.95	.23	
Pocket talker	1 (3%)		3 (4%)		2 (10%)		1.56	.46	
Right handedness	32 (91%)		76 (96%)		19 (91%)		7.30	.12	
Smoking	19 (54%)		33 (45%)		12 (57%)		5.22	.27	
Hypertension	7 (20%)		28 (36%)		9 (43%)		2.68	.61	
	M	SD	M	SD	M	SD	F	p	Post-hoc
Age, years	69.45	6.18	73.47	6.57	75.87	7.24	7.24	<b>.001</b>	SCD<MCI,AD
Education (years)	16.79	3.19	15.52	3.07	15.31	2.96	2.36	.10	-
MoCA (score/30)	27.23	1.94	24.06	3.06	19.38	3.04	51.21	<b>&lt;.001</b>	SCD>MCI>AD
Visual contrast sensitivity (CS)* log units**	1.70	.15	1.67	.15	1.48	.17	12.62	<b>&lt;.001</b>	SCD,MCI>AD
Reading Acuity (logMAR units)***	.28	.27	.30	.29	.20	.21	1.26	.29	-

SCD=subjective cognitive decline, MCI=mild cognitive impairment, and AD=Alzheimer's dementia groups.

\*most of the study participants had normal CS (SCI: 87.5%, MCI: 93%, AD: 50%), while few had moderately impaired CS (SCI: 12.5%, MCI: 7%, AD: 50%); however, these levels of impairment are unlikely to interfere with test administration of visual stimuli

\*\* < 1 log CS = severe impairment, 1-1.5 log CS = moderate impairment, > 1.5 log CS = normal for age 60+

\*\*\* logMAR = logarithm of the minimum angle of resolution; logMAR < .30 (equivalent of better than 20/40) = normal acuity. logMAR .30 to .50 (20/40 to 20/60) = moderate visual impairment

Hearing loss categorization	PTA for 1, 2, 3, 4 kHz (dB HL)		ASHA grade (dB HL)			
	Better ear	Worse ear	Left	Right		
Category 1: 'Normal Hearing' 2-kHz tone at 25 dB HL detected in both ears	<=25 dB	<=25 dB	16.4	15.0	Slight (16-25)	Normal (<=15)
Category 2: 'Mild 1' 2-kHz tone at 25 dB HL detected in better ear; at 40 dB HL detected in worse ear	<=25 dB	26-40 dB	29.9	31.5	Mild (26-40)	Mild
Category 3: 'Mild 2' 2-kHz tone at 40 dB HL detected in both ears	26-40 dB	26-40 dB	39.1	36.7	Mild	Mild
Category 4: 'Moderate 1' 2-kHz tone at 25 dB HL detected in better ear; failed at 40 dB HL in worse ear	<=25 dB	>40 dB	41.0	45.4	Moderate (41-55)	Moderate
Category 5: 'Moderate 2' 2-kHz tone at 40 dB HL detected in better ear; failed at 40 dB HL in worse ear	26-40 dB	>40 dB	50.9	50.7	Moderate	Moderate
Category 6: 'Moderate 3' 2-kHz tone at 40 dB HL failed in both ears	>40 dB	>40 dB	59.9	57.7	Moderate-severe (56-70)	Moderate-severe

PTA= pure-tone average, ASHA = American Speech-Language-Hearing Association.

		SCD		MCI		AD	
		Left HC	Right HC	Left HC	Right HC	Left HC	Right HC
Hearing loss category	<i>r</i>	-.14	<b>-.41</b>	.09	-.07	-.30	-.38
	<i>p</i>	.46	.03	.47	.56	.26	.14
	<i>R</i> <sup>2</sup>	.02	.17	.01	.00	.09	.14
CDTT	<i>r</i>	.02	-.02	.08	.00	.01	-.52
	<i>p</i>	.93	.92	.53	.98	.97	.07
	<i>R</i> <sup>2</sup>	.00	.00	.01	.00	.00	.27

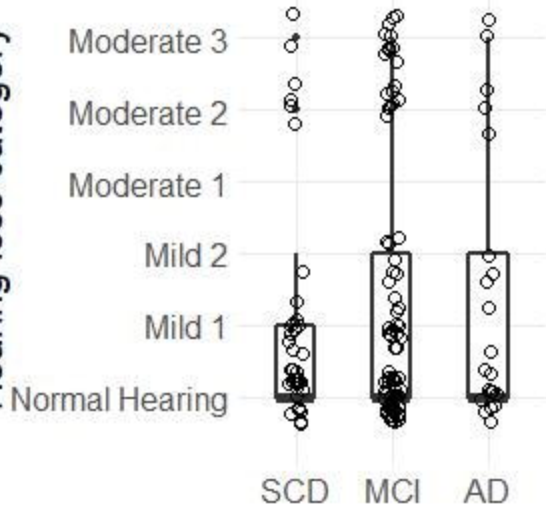
Bold indicates  $p < .05$ . HC=hippocampus. SCD=subjective cognitive decline, MCI=mild cognitive impairment, AD=Alzheimer's dementia.



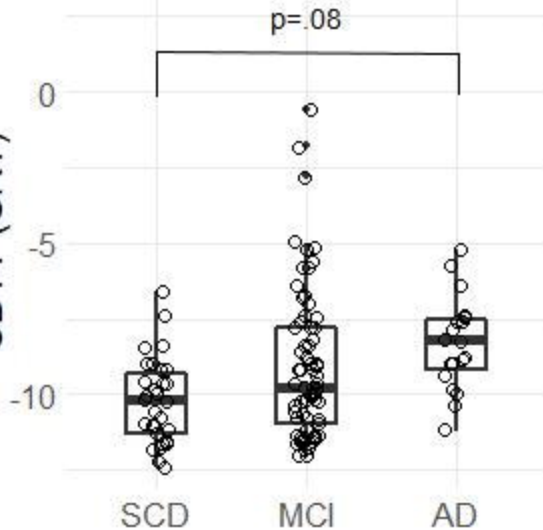
			Correlation	Max	MNI		
					x	y	z
<hr/>							
Hearing loss category							
SCD	LH	Superior temporal gyrus	positive	3.06	-39.88	-20.29	-20.40
	RH	Pars opercularis	positive	3.75	21.98	39.72	-10.32
MCI	-	-	-	-	-	-	-
AD	-	-	-	-	-	-	-
<hr/>							
CDTT							
SCD	LH	Posterior cingulate cortex	positive	3.98	37.97	-8.41	13.51
	RH	Superior temporal gyrus	positive	3.08	37.77	-28.2	-25.35
MCI	LH	Supramarginal gyrus	positive	3.10	-32.09	-47.51	24.74
	RH	Superior frontal gyrus	positive	3.45	-31.23	79.16	9.91
		Lateral orbitofrontal gyrus	positive	3.52	0.92	72.74	-45.23
		Anterior cingulate gyrus	positive	3.25	-33.03	61.90	14.18
AD	LH	Superior temporal gyrus	negative	-3.30	-39.88	-20.29	-20.40
	RH	Superior parietal gyrus	negative	-3.50	-18.38	-95.97	9.31
		Superior temporal sulcus	negative	-3.34	37.77	-28.2	-25.35
		Lateral occipital gyrus	negative	-3.32	10.43	-92.77	-20.07
		Inferior temporal gyrus	negative	-3.05	18.67	-11.54	-64.7

LH: Left hemisphere, RH: Right hemisphere, Max:  $\log_{10}(p)$  at peak, Montreal Neurological Institute (MNI) coordinates.

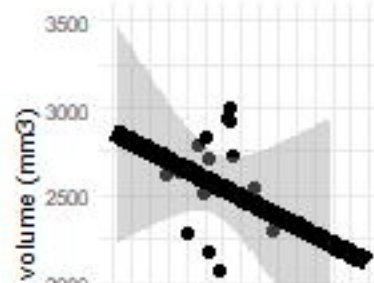
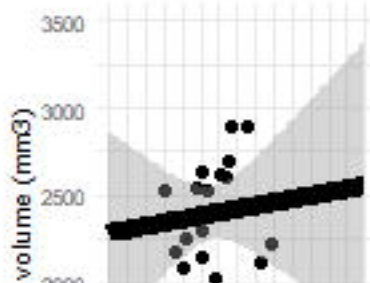
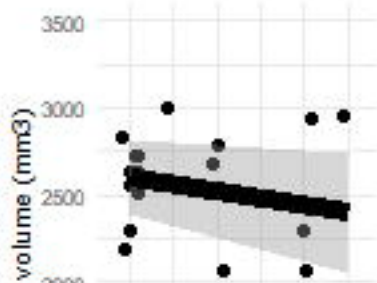
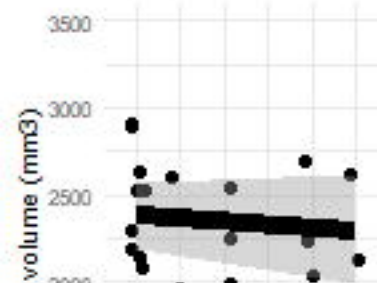
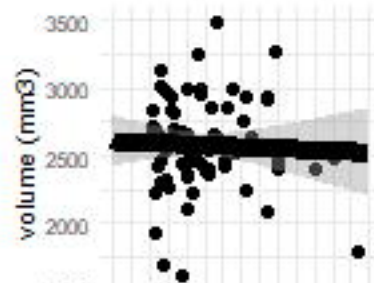
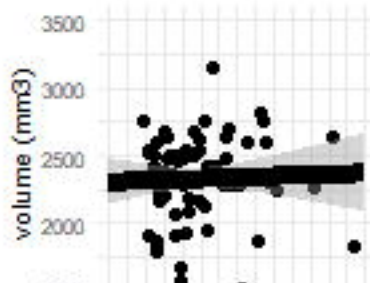
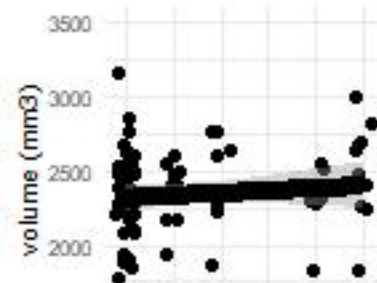
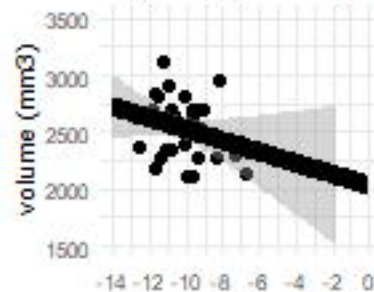
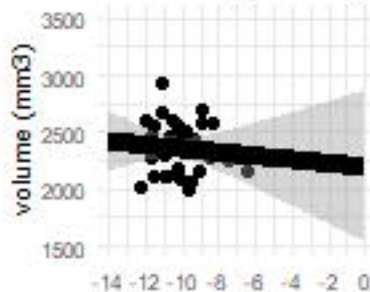
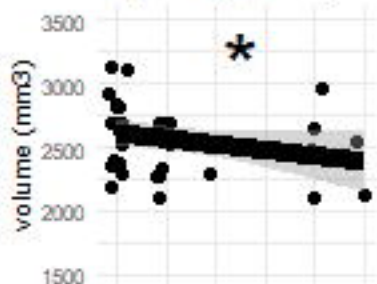
Hearing loss category



CDTT (SRT)





**A Left hippocampus****Right hippocampus****B Left hippocampus****Right hippocampus**

Normal Hearing  
Mild 1  
Mild 2  
Moderate 1  
Moderate 2  
Moderate 3

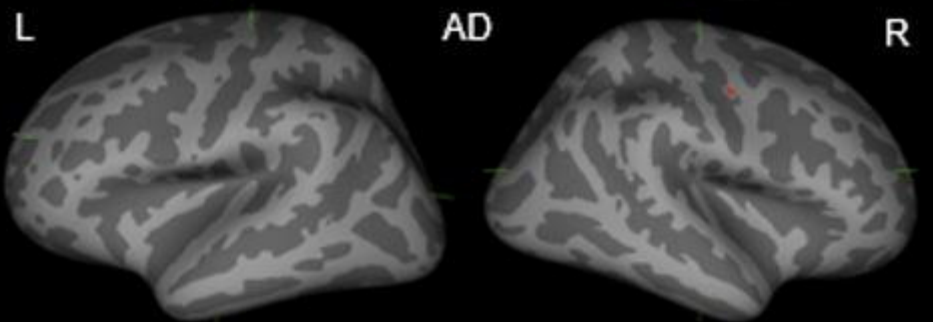
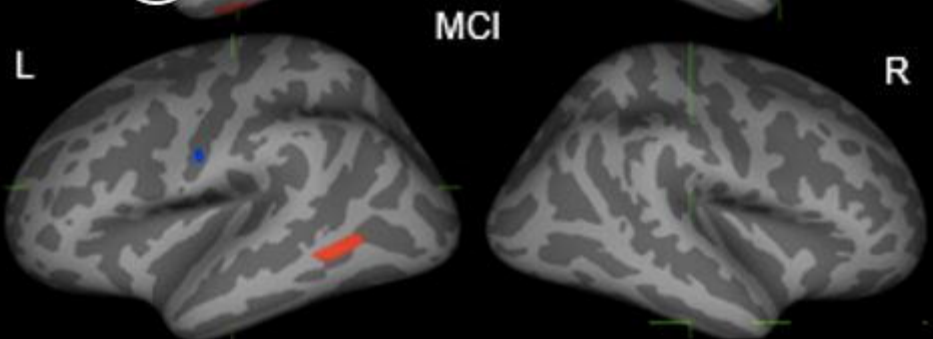
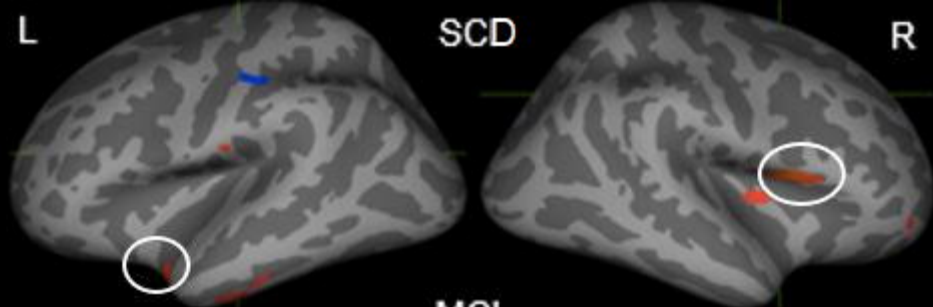
Hearing loss category

Normal Hearing  
Mild 1  
Mild 2  
Moderate 1  
Moderate 2  
Moderate 3

Hearing loss category

CDTT (SRT)

CDTT (SRT)



-5

-2

0

2

5

$\log_{10}(p)$

