

1 Original Articles

2

3 **Decision curve analysis to identify optimal candidates of liver resection for**

4 **intermediate-stage hepatocellular carcinoma with hepatitis B cirrhosis : A**

5 **cohort study**

6

7

8 Siyu Chen¹, Linbin Lu¹, Xinyu Hu¹, Shan Lin², Lijun Zhu^{1*}

9

10

11 ¹Department of Oncology, the 900th Hospital of Joint Logistic Support Force, PLA, Fuzong Clinical
12 College of Fujian Medical University, 350025, Fuzhou, Fujian, PR China.

13 ²Department of Neurology, the 900th Hospital of Joint Logistic Support Force, PLA, Fuzong Clinical
14 College of Fujian Medical University, 350025, Fuzhou, Fujian, PR China.

15

16

17 *Correspondence Author: Lijun Zhu

18 156 Xierhuan Northern Road, Fuzhou, 350025, Fujian, P.R. China

19 Phone: +0086-591-83787037;

20 Fax: 0086-591-24937089;

21 E-mail: doctorzhulijun@163.com

22

23 **Running title:** Surgery vs. TACE for liver cancer

24

25

26

27

28

29

30

31 **Abstract**

32 **Background:** The selection criterion for liver resection (LR) in intermediate-stage (IM) hepatocellular
33 carcinoma (HCC) is still controversial. This study aims to compare LR and transarterial
34 chemoembolization in the range of predicted death risk

35 **Methods:** The multivariable Cox regression model (MVR) was estimated to predict mortality at 5yr.
36 The cut-off values were determined by a two-piece-wise linear regression model, decision curve
37 analysis with MVR model, and hazard ratio curve for treatment plotted against the predicted mortality.

38 **Results:** 825 IM-HCC with hepatitis B cirrhosis were included for analysis (TACE, n=622; LR, n=203).
39 The 5-yr overall survival rate of LR patients was higher than the TACE group (52.8% vs. 20.8%;
40 $P<0.0001$). The line of LR and TACE were crossing with predicted death risk at 100% (P for
41 interaction =0.008). The benefit of LR versus TACE decreased progressively as predicted death
42 risk >0.55 (95%CI: 0.45,0.62). When predicted death risk over 0.7, decision curve analysis suggested
43 that LR and TACE did not increase net benefit. Patients were then divided into four subgroups by the
44 cut-off values (<0.45 , $0.45\geq/<0.62$, $0.62\geq/<0.7$, ≥0.7). The stratified analysis of treatment in different
45 subgroups, hazard ratios were 0.39 (95%CI: 0.27, 0.56), 0.36 (95%CI: 0.23, 0.56), 0.51 (95%CI: 0.27,
46 0.98), and 0.46 (95%CI: 0.27, 0.80), respectively.

47 **Conclusions:** LR reached the maximal relative utility in the interval of 0.45 to 0.62, and both LR and
48 TACE did not increase net benefit at the 5-yr death risk over 0.7.

49

50 **Keywords:** hepatic resection, hepatocellular carcinoma, transarterial chemoembolization, decision
51 curve analysis, net benefit

52

53 **1. Introduction**

54 Hepatocellular carcinoma (HCC) is the fifth cause of death in China, and its high levels of morbidity
55 and mortality rates mostly result from hepatitis B cirrhosis, with nearly half of the global new cases and
56 deaths^{1,2}. Liver resection, regarded as a curative therapy, is widely performed for the patients with
57 Barcelona Clinic Liver Cancer (BCLC) 0-A stage HCC in China, even for the resectable intermediate-
58 stage tumor³. According to the last BCLC staging system, transarterial chemoembolization (TACE) has
59 been recommended as the first-line treatment for unresectable intermediate-stage(IM) HCC⁴. In the
60 clinical setting, however, transarterial chemoembolization (TACE) is also applied on a wide scale in
61 resectable HCC patients alone or combined with surgery. The advantage of surgery over TACE has
62 already been extensively described in the resectable BCLC-B HCC patients⁵ and the cirrhotic patients⁶.
63 However, which groups are more suitable for liver resection (LR) remains an open issue.

64 Recently, an NSP scoring system (1, >1 point; median OS, 61.3 vs. 19.3 months) was developed to
65 select patients with IM-HCC for LR accurately⁷. Compared with the TACE treatment, surgical
66 resection has the better survival only in the subclass of BCLC-B HCC with a Child-Pugh score of 5 and
67 no more than 3 tumors⁸. Besides, according to the modified Bolondi's sub-staging model, partial
68 hepatectomy has an optimal long-term survival than TACE in the BCLC-B1/B2 HCC⁹. Interestingly, in
69 another study, patients were grouped into low-risk (3yr mortality \leq 35%), medium-risk (35% < 3yr
70 mortality < 70%), and high-risk (3yr mortality \geq 70%) groups by regret-based decision curve analysis.
71 And only the patients in the low-risk group have a better outcome than those treated with TACE¹⁰.
72 However, more convenient biomarkers are urgent to choose suitable therapy for IM-HCC, a highly
73 heterogeneous population. In the present study, we use a predicted mortality risk-based decision
74 analysis to compare the clinical outcome of hepatectomy and TACE in the IM-HCC. We present the

75 following article in accordance with the STROBE reporting checklist.

76

77 **2. Material and Methods**

78 *2.1 Patient selection*

79 Clinical and biological data have been previously published in full^{11,12}, and the details of inclusion
80 criteria, diagnosis, and treatment are shown in Figure S1. The Ethics Committee approved the study
81 protocol (2017-FXY-129) of SYSUCC and another three medical centers¹¹. Because this was a
82 retrospective study, the informed consent was waived.

83 *2.2 Definition and follow up*

84 Liver resection (LR): surgical therapy for hepatic segments or lobes lesions. In the clinical, patients
85 with well liver function and less tumor loading were usually suitable for HR.

86 Transarterial chemoembolization (TACE): chemoembolization of the hepatic artery. According to
87 the response to the TACE, the subsequent therapies include ablative therapies, surgical resection,
88 TACE, or targeted therapies.

89 Overall survival (OS): the time between the beginning of LR/TACE and the last following-up or
90 death for any cause.

91 During the initial treatment period for the first 2 years, patients were followed up for every 2 or 3
92 months if complete remission was achieved. The frequency gradually decreased to every 3 to 6 months
93 after remission of 2 years.

94 *3.3 Statistical analyses*

95 To compare differences of baseline characteristics between the HR and TACE groups, we compared

96 categorical variables with the chi-square test and continuous variables by the Mann-Whitney test.
97 Kaplan-Meier methods calculated overall survival rates for the LR and TACE cohorts. Statistical
98 analysis was performed using Empower (www.empowerstats.com, X&Y solutions, inc. Boston MA)
99 and R software (version 3.4.3). P-value < 0.05 considered significant.

100 To explore the optimal range of death risk for the net benefit of LR against TACE, we divide the
101 statistical analyses into three steps:

102 Firstly, according to the previously reported methods¹³, we developed the multivariable Cox
103 regression (MVR) model, which was based on the significantly different covariates between two
104 treatment groups (all $P < 0.05$ list in Table 1), including the continuous covariates of age, PT and
105 diameter of the main tumor, as well as the categorical covariates *No.* of intrahepatic lesions, both lobe
106 with lesions.

107 To evaluate the interaction between LR and death risk, we used the method¹³: (1) predicted OS rate
108 at 5 yr (P_i) was calculated based on the MVR model in the LR group. From this model, death risk at 5
109 yr ($1 - P_i$) was also the baseline death risk for both LR and TACE cohorts. (2) this predicted death risk
110 ($1 - P_i$) was added as a covariate to the second multivariate Cox model to calculate the predicted
111 probability of survival at 5 yr (P_{ii}), and (3) spline smoothing curve between 5yr predicted death risk ($1 - P_i$)
112 and probability (P_{ii}) were graphed stratified by treatment through the generalized additive model.
113 Furthermore, a two-piece-wise linear regression and the recursive method were performed to calculate
114 the inflexion point of the TACE line, and a log-likelihood ratio test was used to compare the one-line
115 linear regression. The 95% confidence interval of inflection point was confirmed by 500 bootstrap
116 resampling, which may be the optimal range for the net benefit of LR against TACE.

117 Secondly, to further verify this interval, we used the “ggDCA” R package to establish a decision
118 curve analysis with the MVR model. We calculated the net benefit of the model and determined the
119 cut-off value through two reference strategies (test none or test all).

120 Thirdly, to further validate the cut-off points from the two steps above, we paint the hazard ratio (HR)
121 curve (LR vs. TACE) for the 5yr predicted death risk by the Cox regression model. The
122 stratified analyses were performed to explore LR (vs. TACE) hazard ratio in each subgroup based on
123 the observed cut-off values.

124 **3. Results**

125 *3.1 Descriptive characteristics*

126 In the derivation cohort, 825 patients with hepatitis B cirrhosis were included in the final analysis,
127 with TACE (n=622, 75.4%) or surgical resection (n=203, 24.6%) as their first-line treatment. Table 1
128 showed the baseline features of study populations. The univariable analysis results were listed in Table
129 S1, focusing on the markedly different covariates between the two groups.

130 The median overall survival for the entire cohort was 23.3 (95%CI: 20.0, 26.6) month. And it was
131 18.0(95%:16.2,19.9) month for TACE group versus 67.4(95%CI:44.0, NA) month for LR group
132 ($P < 0.0001$, see Figure S2). The OS rates at 5 yr was 29.5% (95%CI: 25.7%, 33.9%) for the entire
133 cohort, and it was 52.8% (95% CI:45.0%, 62.0%) for HR group versus 20.8% (95%CI: 16.8%, 25.7%)
134 for the TACE group ($P < 0.0001$).

135 *3.2 Survival analysis for net benefit in treatment cohorts*

136 The MVR model was estimated by age, PT, largest tumor size, *No.* of intrahepatic lesions, and both
137 lobes with lesions, which was used to predict 5-yr death risk and OS rate for the entire cohort (Figure

138 S3). Its Harrell's C index was 0.70 (0.67, 0.72). In Figure 1, the predicted death risk was plotted against
139 OS rate at 5yr. And the lines for LR and TACE crossed at 1.0 (P for interaction = 0.008). In Table 2,
140 we found that the inflexion point of the TACE line was calculated at 0.55 (95%CI: 0.45, 0.62),
141 indicating the benefit from HR decreased progressively as predicted OM risk over 55%. Interestingly,
142 the predicted survival rate of the TACE line at 0.55 was 0.20 (95%CI: 0.18, 0.21), which was in the
143 interval of observed OS at 5yr for the TACE group (20.8%, 95%CI: 16.8%, 25.7%).

144 As was shown in Figure 2, net benefit curves suggested none could receive a net benefit from
145 surgery and TACE for death risk >0.7 ; maximal relative utility occurred at 0.4. Consistently, these cut-
146 off values were further validated by the hazard ratio curve of LR and TACE against the 5yr predicted
147 death risk, which was shown in Figure 3. Thus, patients were grouped into four subclasses: $R5 < 0.45$,
148 $0.45 \geq R5 < 0.62$, $0.62 \geq R5 < 0.7$, $R5 \geq 0.7$. Figure 3 also illustrated the stratified analysis of LR (vs TACE),
149 hazard ratios were 0.39 (95%CI: 0.27, 0.56), 0.36 (95%CI: 0.23, 0.56), 0.51 (95%CI: 0.27, 0.98),
150 and 0.46 (95%CI: 0.27, 0.80) for each subclass.

151

152 **4. Discussion**

153 In this large-scale, real-world data, we found that the overall survival for LR was significantly better
154 than their TACE counterparts, which was consistent with the previous literature^{5,14}. However, the net
155 benefit from LR decreased progressively as predicted death risk $>55\%$, with the interval of maximal
156 relative utility ranging from 45% to 62%. When death risk $>70\%$, LR and TACE did not increase net
157 benefit.

158 In 2015, Colombo et al.¹⁵ had come up with an assumption that intermediate-stage HCC patients

159 could still be suitable for liver resection if the 5-yr survival rate reached 50%. Our findings primarily
160 validated this hypothesis. In line with the previous literature^{9,16}, we identified a subgroup with death
161 risk<70%, in which patients treated with HR had significantly better overall survival than the TACE
162 group. Based on Bolondi's sub-staging model¹⁷, Wei et al.⁹, patients' postoperative 5-yr survival rate in
163 the BCLC B1-B3 stage was 49.5%, 33.7%, and 12.9%, respectively. Nevertheless, only the BCLC
164 B1/B2 had more optimal long-term survival than the TACE group. In another large-scale study¹⁶, the
165 benefit from liver resection was observed in the patients of BCLC-B1/B2 but not B3/B4.

166 Our study had some strengths. We used three novel methods to calculate the cut-off accuracy value
167 to evaluate the tumor loading. Besides, in our study, the survival rates between LR and TACE were
168 compared in the vast and continuous range so that the exact cut-off values could be calculated. When
169 evaluating the role of liver resection among patients with anatomically resectable tumors and well liver
170 function, the randomized control trial was obviously against medical ethics. Therefore, real-world
171 data's predicted mortality risk-based decision analysis may be better.

172 Our study also had several limitations. Firstly, this was a retrospective cohort from real-world data;
173 residual bias and unmeasured confounders were unavoidable. Secondly, the percentage of resectable
174 HCC patients in the TACE group with 5-yr death risk< 70% was unclear. However, it was worthy of
175 note that the potential unresectable HCC patients treated with TACE resulting from such errors would
176 bias toward the null and lead to an underestimation of the net benefit from liver resection versus TACE.

177

178 **5. Conclusions**

179 LR reached the maximal relative utility in the interval of 0.45 to 0.62, and both LR and TACE did

180 not increase net benefit at the 5-yr death risk over 0.7.

181 **Abbreviations**

182 BCLC: Barcelona clinic liver cancer; SYSUCC: Sun Yat-sen University Cancer Center

183 LR: Liver resection; IM-HCC: intermediate-stage hepatocellular carcinoma;

184 TACE: transarterial chemoembolization; OS: overall survival;

185 HBV: hepatitis B virus.

186

187 **Ethics approval and informed consent** : The study protocol (2017-FXY-129) was approved
188 by the clinical research department at SYSUCC. Because this was a secondary analysis study, and the
189 data were anonymous, the requirement for informed consent was waived.

190 **Data availability** : The data are available from the corresponding author on reasonable request.

191 **Funding**: This research received financial support from the Natural Science Foundation of the 900th
192 hospital of PLA (Nos 2016Q05 and 2017Q02 and 2017L17 and 2016L03 and 2017J03).

193 **Competing interests** : Non-financial competing interests

194 **Author contributions**: (I) Conception and design: All authors; (II) Administrative support: All
195 authors; (III) Provision of study materials or patients: All authors; (IV) Collection and assembly of data:
196 All authors; (V) Data analysis and interpretation: All authors; (VI) Manuscript writing: All
197 authors;(VII) Final approval of manuscript: All authors

198 **Acknowledgments**: We gratefully thank you for the raw data from Prof. Peihong Wu (E-
199 mail:wuph@sysucc.org.cn) and the statistical support from Empower U team of the Department of
200 Epidemiology and Biostatistics, X&Y solutions Inc. Funding:

Reference

1. M Z, H W, X Z, et al. Mortality, morbidity, and risk factors in China and its provinces, 1990-2017: a systematic analysis for the Global Burden of Disease Study 2017. *Lancet (London, England)*. 2019;394(10204):1145-1158.
2. Bray F, Ferlay J, Soerjomataram I, Siegel RL, Torre LA, Jemal A. Global cancer statistics 2018: GLOBOCAN estimates of incidence and mortality worldwide for 36 cancers in 185 countries. *CA: a cancer journal for clinicians*. Nov 2018;68(6):394-424. doi:10.3322/caac.21492
3. Zhou J, Sun HC, Wang Z, et al. Guidelines for Diagnosis and Treatment of Primary Liver Cancer in China (2017 Edition). *Liver Cancer*. Sep 2018;7(3):235-260. doi:10.1159/000488035
4. European Association for the Study of the Liver. Electronic address eee, European Association for the Study of the L. EASL Clinical Practice Guidelines: Management of hepatocellular carcinoma. *J Hepatol*. Jul 2018;69(1):182-236. doi:10.1016/j.jhep.2018.03.019
5. Hyun MH, Lee YS, Kim JH, et al. Hepatic resection compared to chemoembolization in intermediate- to advanced-stage hepatocellular carcinoma: A meta-analysis of high-quality studies. *Hepatology*. Sep 2018;68(3):977-993. doi:10.1002/hep.29883
6. Chen S, Jin H, Dai Z, et al. Liver resection versus transarterial chemoembolization for the treatment of intermediate-stage hepatocellular carcinoma. *Cancer Med*. Apr 2019;8(4):1530-1539. doi:10.1002/cam4.2038
7. Zhang YF, Zhou J, Wei W, et al. Intermediate-stage hepatocellular carcinoma treated with hepatic resection: the NSP score as an aid to decision-making. *British journal of cancer*. Oct 25 2016;115(9):1039-1047. doi:10.1038/bjc.2016.301
8. Tada T, Kumada T, Toyoda H, et al. Role of hepatic resection in patients with intermediate-stage hepatocellular carcinoma: A multicenter study from Japan. *Cancer science*. Jul 2017;108(7):1414-1420. doi:10.1111/cas.13257
9. Wei WX, Yang ZS, Lu LH, et al. Long-term survival after partial hepatectomy for sub-stage patients with intermediate stage hepatocellular carcinoma. *International journal of surgery (London, England)*. Aug 2018;56:256-263. doi:10.1016/j.ijssu.2018.06.020
10. Cucchetti A, Djulbegovic B, Tsalatsanis A, et al. When to perform hepatic resection for intermediate-stage hepatocellular carcinoma. *Hepatology*. Mar 2015;61(3):905-14. doi:10.1002/hep.27321
11. Shen L, Zeng Q, Guo P, et al. Dynamically prognosticating patients with hepatocellular carcinoma through survival paths mapping based on time-series data. *Nature communications*. Jun 8 2018;9(1):2230. doi:10.1038/s41467-018-04633-7
12. Lu L, Zheng P, Wu Z, Chen X. Hepatic Resection Versus Transarterial Chemoembolization for Intermediate-Stage Hepatocellular Carcinoma: A Cohort Study. *Front Oncol*. 2021;11:618937. doi:10.3389/fonc.2021.618937
13. Loppenberg B, Dalela D, Karabon P, et al. The Impact of Local Treatment on Overall Survival in Patients with Metastatic Prostate Cancer on Diagnosis: A National Cancer Data Base Analysis. *Eur Urol*. Jul 2017;72(1):14-19. doi:10.1016/j.eururo.2016.04.031
14. Liang L, Xing H, Zhang H, et al. Surgical resection versus transarterial chemoembolization for BCLC intermediate stage hepatocellular carcinoma: a systematic review and meta-analysis. *HPB : the*

official journal of the International Hepato Pancreato Biliary Association. Feb 2018;20(2):110-119. doi:10.1016/j.hpb.2017.10.004

15. Colombo M, Sangiovanni A. Treatment of hepatocellular carcinoma: beyond international guidelines. *Liver Int*. Jan 2015;35 Suppl 1:129-38. doi:10.1111/liv.12713

16. Kariyama K, Nouse K, Wakuta A, et al. Treatment of Intermediate-Stage Hepatocellular Carcinoma in Japan: Position of Curative Therapies. *Liver Cancer*. Jan 2020;9(1):41-49. doi:10.1159/000502479

17. Bolondi L, Burroughs A, Dufour JF, et al. Heterogeneity of patients with intermediate (BCLC B) Hepatocellular Carcinoma: proposal for a subclassification to facilitate treatment decisions. *Seminars in liver disease*. Nov 2012;32(4):348-59. doi:10.1055/s-0032-1329906

Table 1. Baseline characteristics between TACE and surgery group in the derivation cohort

	Treatment		Standardize difference	P-value
	TACE	Surgery		
No.	622	203		
Age	53.9 ± 12.2	50.6 ± 12.4	0.3 (-0.1, 0.4)	0.001
Gender			0.0 (-0.1, 0.2)	0.716
male	566 (91.0%)	183 (90.1%)		
female	56 (9.0%)	20 (9.9%)		
AFP (ng/ml) Log	2.6 ± 1.4	2.4 ± 1.5	0.2 (-0.0, 0.3)	0.050
PT (seconds)	12.3 ± 1.3	12.5 ± 1.6	0.2 (0.0, 0.3)	0.037
ALB (g/L)	39.0 ± 5.8	38.4 ± 5.4	0.1 (-0.1, 0.3)	0.220
Log TBLT(umol/L)	1.3 ± 0.2	1.3 ± 0.3	0.1 (-0.0, 0.3)	0.157
Major tumor size(mm)	75.2 ± 37.0	63.6 ± 27.6	0.4 (0.2, 0.5)	<0.001
No. of intrahepatic lesions			0.7 (0.5, 0.9)	<0.001
2	150 (24.1%)	110 (54.2%)		
3	51 (8.2%)	20 (9.9%)		
>3	421 (67.7%)	73 (36.0%)		
Location of Lesions			0.6 (0.5, 0.8)	<0.001
0	219 (35.2%)	132 (65.0%)		
1	403 (64.8%)	71 (35.0%)		
Child-Pugh class			0.1 (-0.1, 0.3)	0.246
A	522 (86.9%)	168 (83.6%)		
B	79 (13.1%)	33 (16.4%)		

Numbers that do not add up to 825 are attributable to missing data.

AFP=alpha-fetoprotein, PT=prothrombin time, TBLT=total bilirubin, ALB=albumin, TACE=transarterial chemoembolisation. The chi-square test was performed for categorical measures and Kruskal-Wallis Test for continuous measures.

Table 2. Threshold effect analysis of TACE group in the derivation cohort using two-piece-wise linear regression

	Unadjusted β (SD)	P-value
The one-line linear model	-0.71(0.02)	<0.0001
The two-piece-wise linear model		
< 0.55	-0.98(0.05)	<0.0001
> 0.55	-0.47(0.04)	<0.0001
<i>P</i> for log-likelihood ratio test		<0.001

The predicted value at the point of 0.55(95%CI: 0.45, 0.62) was 0.20 (95%CI: 0.18, 0.21). A log-likelihood ratio test was used to compare the one-line linear regression.

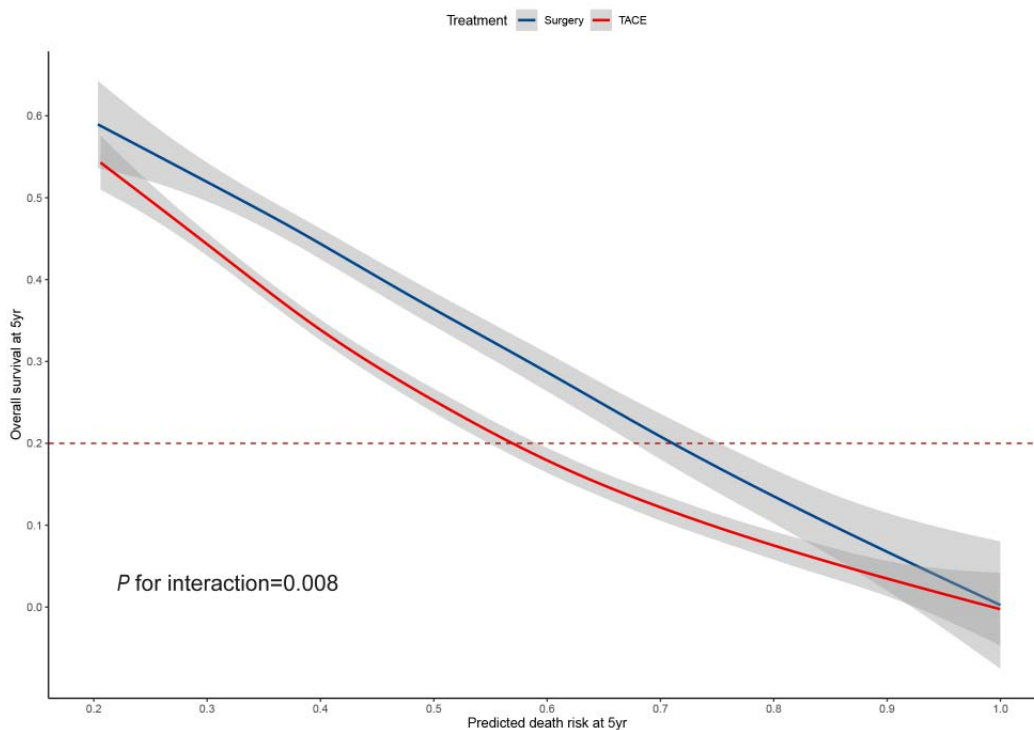


Figure 1. Overall survival rate plotted against predicted probability of death at 5yr. The blue line indicates hepatic resection for primary treatment. The red line indicates TACE for primary treatment. Dashed line indicates observed OS at 5yr for the TACE group (20.8%, 95% CI: 16.8%, 25.7%). The inflexion point of the TACE line was calculated at 0.55 (95% CI: 0.45, 0.62).

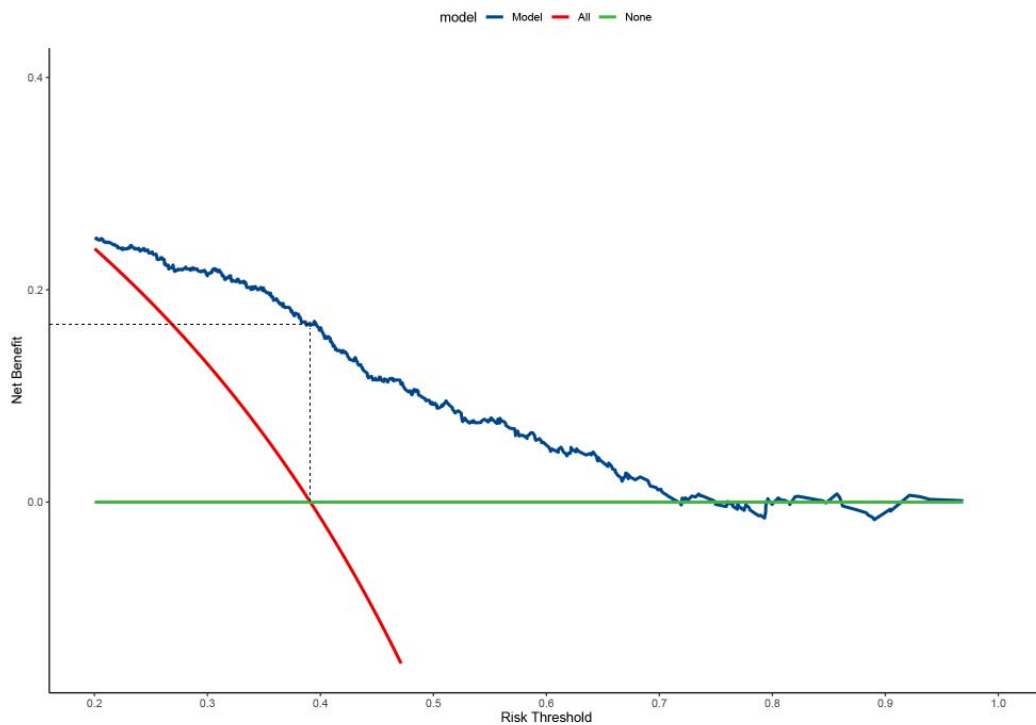


Figure 2. Decision curve analysis with multivariable Cox regression model for overall survival.

Solid green line = net benefit when all BCLC-B HCC is considered not having the outcome; red dashed line=net benefit when all pregnant women are considered the outcome.

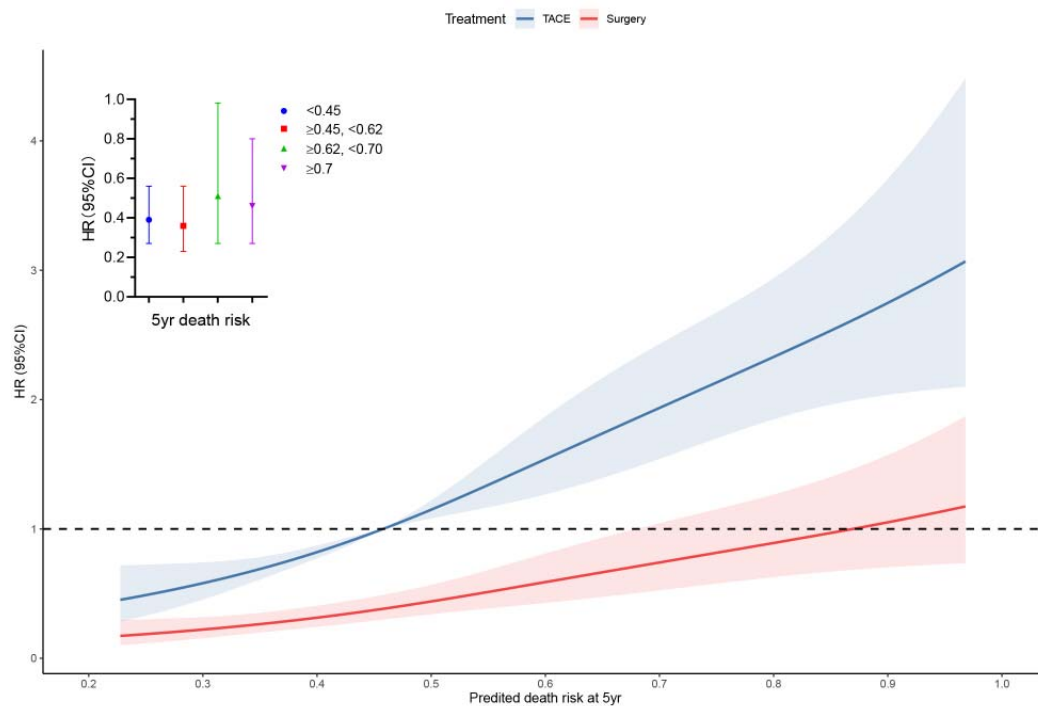


Figure 3. Hazard ratio of treatment plotted against the predicted mortality at 5yr. Hazard ratios for LR versus TACE in the stratified analysis are 0.39 (95%CI: 0.27, 0.56), 0.36 (95%CI: 0.23, 0.56), 0.51 (95%CI: 0.27, 0.98), and 0.46 (95%CI: 0.27, 0.80) for each subclass.

Supplemental materials

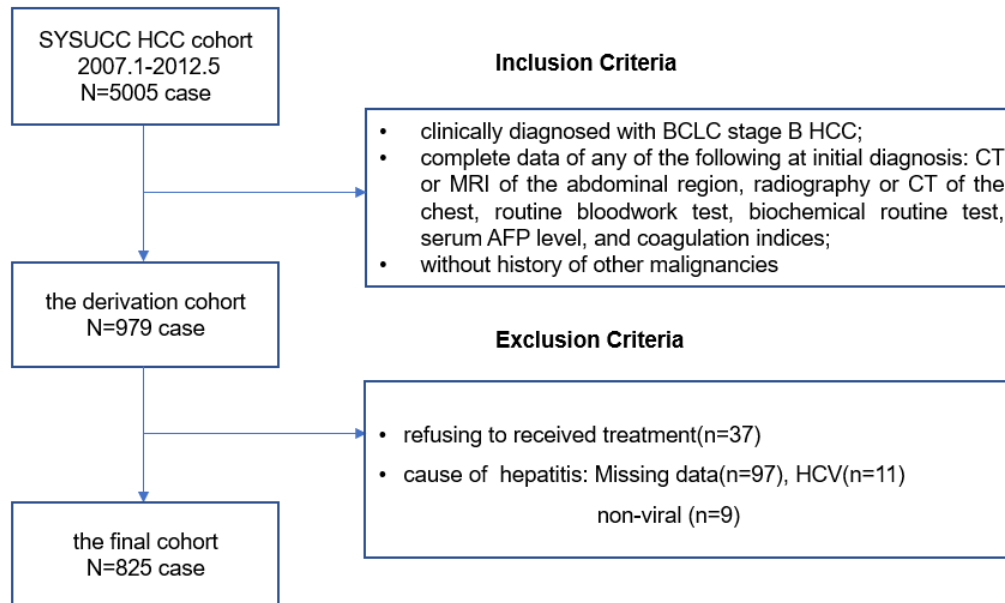


Figure S1. Inclusion and exclusion criteria of hepatocellular carcinoma patients. Between January 2007 and May 2012, 5005 consecutive patients with newly diagnosed HCC at Sun Yat-sen University Cancer Center (SYSUCC) were retrospectively reviewed to develop the derivation cohort. After meeting the inclusion criteria, a total of 979 patients were included in the derivation cohort.

Diagnosis: According to the exclusion criteria, 825 cases were included in the final cohort. For the patients treated with surgery (n=203), HCC diagnosis was confirmed by histopathological examination of surgical samples. For the patients with TACE(n=622), in contrast, the diagnosis was confirmed by the combination with the serum level of alpha-fetoprotein (AFP, over 400 ng/mL) and clinical imaging, including ultrasonography, computed tomography, or magnetic resonance imaging. A needle biopsy was performed if the diagnosis was uncertain based on imaging and AFP level.

Treatment: Based on the decisions of the multidisciplinary teams, the optimal treatment plan was adopted for each HCC patient. The indications for surgery in IM-HCC patients were appropriate residual liver volume determined by computed tomography. For patients without cirrhosis, 30% remnant liver volume after HR was considered adequate. However, for those with chronic hepatitis cirrhosis, the remnant volume should be more than 50%. Patients who satisfied the indications for surgery were treated by surgical resection unless the patient requested TACE.

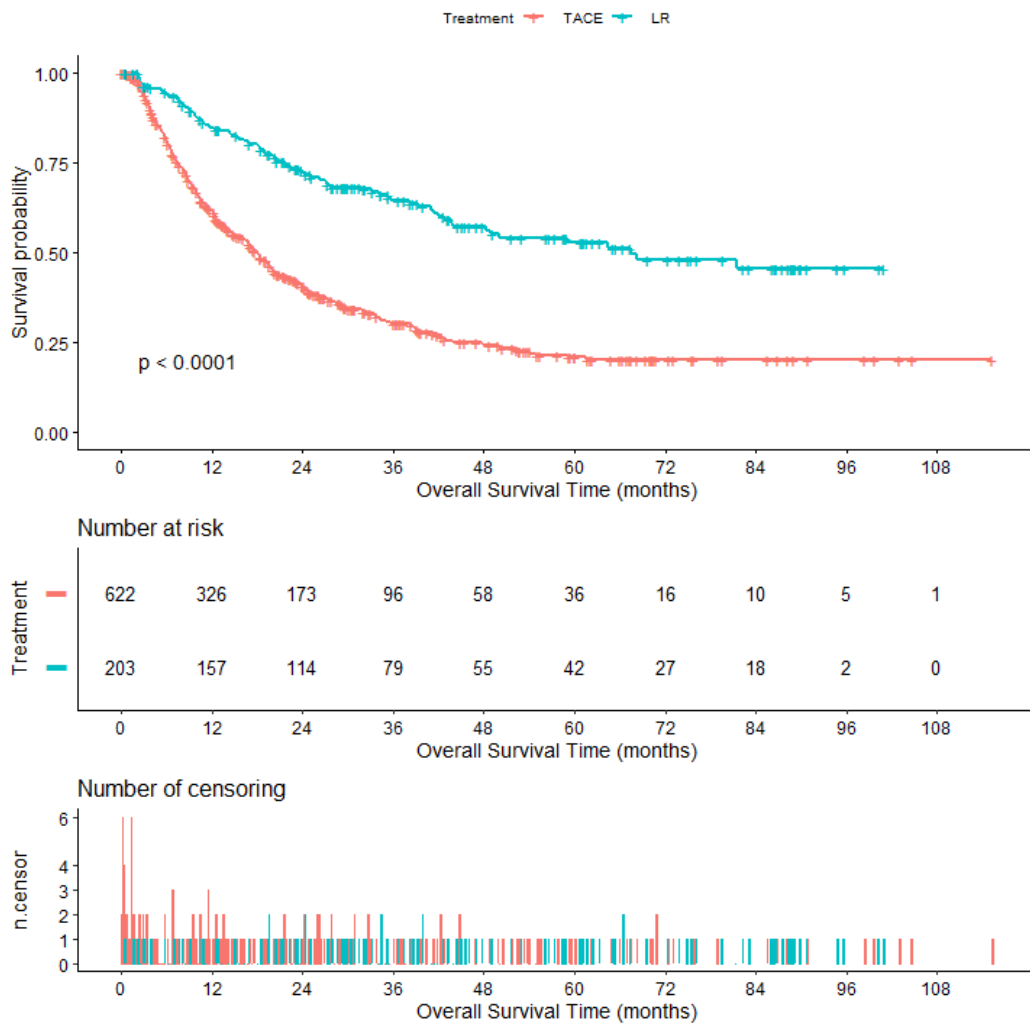


Figure S2. Kaplan-Meier curves of overall survival in the derivation cohort stratified with liver resection and transarterial chemoembolization.

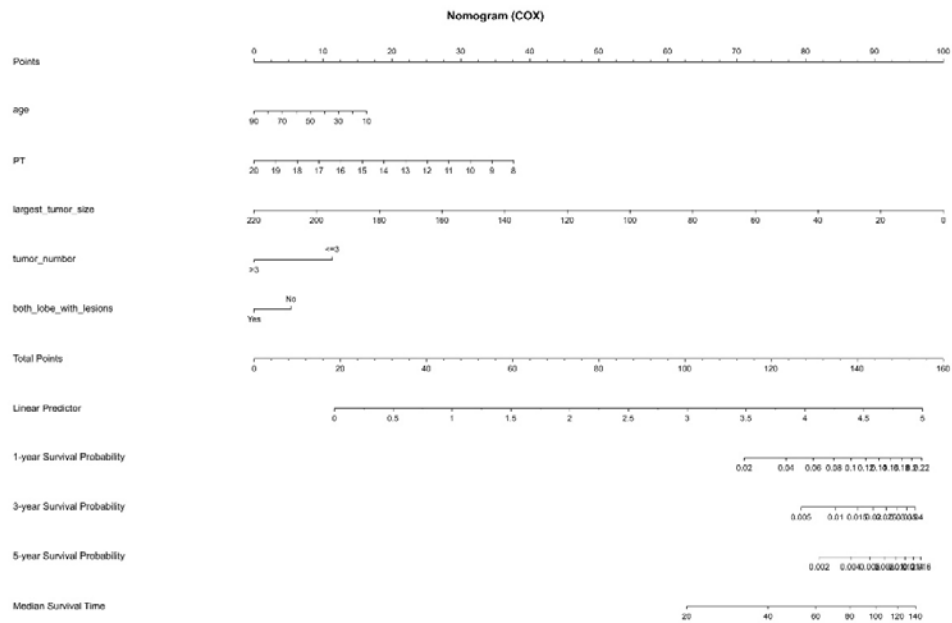


Figure S3. Nomogram to predict the OS. 1yr-,3yr- and 5yr- AUC are 0.73, 0.69, 0.66.

Table S1. The univariate analysis focusing on the derivation cohort

	Statistics	Death	P-value
Treatment			
TACE	622 (75.4%)	Reference	
LR	203 (24.6%)	0.39 (0.30, 0.50)	<0.0001
Age	53.2 ± 12.5	1.00 (0.99, 1.01)	0.661
Gender			0.381
male	749 (90.8%)	Reference	
female	76 (9.2%)	1.15 (0.84, 1.58)	
ALB (g/L)	38.8± 5.7	0.99 (0.97, 1.00)	0.104
PT (second)	12.3 ± 1.4	1.09 (1.01, 1.16)	0.017
No. of intrahepatic lesions			
2	260 (31.5%)	Reference	
3	71 (8.6%)	1.11 (0.78, 1.59)	0.554
>3	494 (59.9%)	1.57 (1.28, 1.94)	<0.0001
Major tumor size(mm)	72.3 ± 35.3	1.01 (1.01, 1.02)	<0.0001
Both lobes with lesion			
no	351 (42.5%)	Reference	
yes	474 (57.5%)	1.44 (1.19, 1.74)	0.0001
log ₁₀ AFP (ng/ml)	2.5 ± 1.4	1.21 (1.13, 1.29)	<0.0001
log ₁₀ TBLT(umol/L)	1.3 ± 0.3	0.98 (0.67, 1.43)	0.909
Child-Pugh class			0.009
A	690 (86.0%)	Reference	
B	112 (14.0%)	1.41 (1.09, 1.83)	

Numbers that do not add up to 825 are attributable to missing data. AFP=alpha-fetoprotein, PT=prothrombin time, TBLT=total bilirubin, ALB=albumin, HR=hepatic resection.

