

1 Extended laboratory panel testing in the Emergency Department for risk-
2 stratification of patients with COVID-19: a single centre retrospective service
3 evaluation

4

5 Mark J Ponsford^{1,2*†} & Ross J Burton^{1†}, Leitchan Smith³, Palwasha Khan^{4,5}, Robert
6 Andrews¹, Simone Cuff¹, Laura Tan⁷, Matthias Eberl^{1,6}, Ian R Humphreys^{1,6}, Farbod
7 Babolhavaeji⁸, Andreas Artemiou⁹, Manish Pandey⁷, Stephen Jolles² & Jonathan
8 Underwood^{1,10}

9

10 † contributed equally

11 * corresponding author

12

13 Affiliations

14

15 ¹ Division of Infection and Immunity, School of Medicine, Cardiff University, Cardiff, UK

16 ² Immunodeficiency Centre for Wales, University Hospital of Wales, Cardiff, UK

17 ³ Information & Technology Team, Cardiff and Vale University Health Board, Cardiff, UK

18 ⁴ Department of Sexual Health, Cardiff and Vale University Health Board, Cardiff, UK

19 ⁵ Department of Clinical Research, London School of Hygiene & Tropical Medicine, London, UK

20 ⁶ Systems Immunity Research Institute, Cardiff University, Cardiff, UK

21 ⁷ Adult Critical Care Directorate, Cardiff and Vale University Health Board, Cardiff, UK

22 ⁸ Department of Emergency Medicine, Cardiff and Vale University Health Board, Cardiff, UK

23 ⁹ School of Mathematics, Cardiff University, Cardiff, UK

24 ¹⁰ Department of Infectious Diseases, Cardiff and Vale University Health Board, Cardiff, UK

25

26

27

28

29

30 **Background**

31 The role of specific blood tests to predict poor prognosis in patients admitted with infection from
32 SARS-CoV2 virus remains uncertain. During the first wave of the global pandemic, an extended
33 laboratory testing panel was integrated into the local pathway to guide triage and healthcare
34 resource utilisation for emergency admissions. We conducted a retrospective service evaluation to
35 determine the utility of extended tests (D-dimer, ferritin, high-sensitivity troponin I, lactate
36 dehydrogenase, procalcitonin) compared to the core panel (full blood count, urea & electrolytes,
37 liver function tests, C-reactive protein).

38 **Methods**

39 Clinical outcomes for adult patients with laboratory-confirmed COVID-19 admitted between 17th
40 March to 30st June 2020 were extracted, alongside costs estimates for individual tests. Prognostic
41 performance was assessed using multivariable logistic regression analysis with 28-day mortality used
42 as the primary endpoint, and a composite of 28-day intensive care escalation or mortality for
43 secondary analysis.

44 **Results**

45 From 13,500 emergency attendances we identified 391 unique adults admitted with COVID-19. Of
46 these, 113 died (29%) and 151 (39%) reached the composite endpoint. “Core” test variables adjusted
47 for age, gender and index of deprivation had a prognostic AUC of 0.79 (95% Confidence Interval, CI:
48 0.67 to 0.91) for mortality and 0.70 (95% CI: 0.56 to 0.84) for the composite endpoint. Addition of
49 “extended” test components did not improve upon this.

50 **Conclusion**

51 Our findings suggest use of the extended laboratory testing panel to risk stratify community-
52 acquired COVID-19-positive patients on admission adds limited prognostic value. We suggest
53 laboratory requesting should be targeted to patients with specific clinical indications.

54

55 Introduction:

56 In December 2019, a novel coronavirus disease (COVID-19) was reported in China, caused by severe
57 acute respiratory syndrome coronavirus 2 (SARS-CoV-2) (1). In the first 8 months since its
58 emergence, SARS-CoV-2 has caused over 32 million infections and more than a million deaths
59 worldwide (2). The majority of patients with COVID-19 experience a mild influenza-like illness,
60 however approximately 15-25% of those admitted to hospital develop pneumonia that may evolve
61 into acute respiratory distress syndrome (ARDS) (3-6). Experience from the Italian region of
62 Lombardy highlighted the potential of uncontrolled COVID-19 outbreaks to rapidly overwhelm local
63 intensive care capacity and healthcare systems (5). In the United Kingdom, Wales has one of the
64 lowest number of intensive care beds per head of population in Europe (7, 8), prompting
65 implementation of scoring systems to support patient triage and allocation of healthcare resources.

66 The ability to identify patients at greatest risk of developing life-threatening complications from
67 SARS-CoV-2 infection based on haematological and biochemical laboratory markers was suggested
68 early in the pandemic. A range of admission tests including D-dimer, ferritin, high-sensitivity
69 troponin I (hs-Trop), and lactate dehydrogenase (LDH) have been linked with disease severity and
70 risk of death (9-13). Similar findings have been replicated in meta-analysis (14). Furthermore, use of
71 a broader range of laboratory tests in patients with COVID-19 has been supported by the UK Royal
72 College of Pathologists (15). Accordingly, an extended panel of laboratory tests was integrated
73 within the standard of care pathway for COVID-19 admissions presenting via the Emergency
74 Department (ED) of the University Hospital of Wales. This panel consisted of both “core” (full blood
75 count, FBC; urea & electrolytes, U&E; liver function tests, LFTs; C-reactive protein, CRP) and
76 “extended” test components (D-dimer; LDH; ferritin; hs-Trop; and procalcitonin, PCT).

77 A joint National Health Service (NHS)-University collaboration supporting the rapid creation of an
78 electronic healthcare registry (see extended methods) provided a timely opportunity to
79 retrospectively assess the value and cost of implementing this extended laboratory panel. This is
80 particularly relevant given a recent systematic review of methodological and reporting standards
81 highlighting caution before extrapolating models and decision thresholds derived from prognostic
82 biomarker studies into local clinical practice (18). The role of extended components remains poorly
83 represented in prognostic studies within the UK population to date (4, 16-19). We therefore
84 conducted a service evaluation focusing on the ability of these tests to predict mortality or
85 escalation to intensive care in the first 28-days following admission, in adult patients with PCR-
86 confirmed COVID-19. Our primary aim was to assess how addition of components of the extended
87 panel altered the prognostic performance of the core panel (15). Our secondary aim was to explore
88 the additional cost of extended testing components. Together, this directs refinement of a risk
89 stratification panel with potential cost savings ahead of future waves of COVID-19.

90 Methods

91 Study population

92 We identified patients aged ≥ 18 years admitted between 17th March 2020 to 30th June 2020 via the
93 Emergency Department (ED) of the University Hospital of Wales (Cardiff, UK). This 1,000-bed
94 hospital is a tertiary referral centre within the region with the greatest recorded total of COVID-19
95 case positives in Wales (20). Only patients with SARS-CoV-2 infection confirmed by positive reverse
96 transcriptase polymerase chain reaction (PCR) on nasopharyngeal swab, and likely community-
97 acquired disease (defined as swab positive between 14 days prior or 7 days following the date of
98 initial emergency attendance) were included. Patients transferred in from other hospitals were
99 excluded.

100 The primary dataset was extracted as part of a service evaluation to assist local care planning. A fully
101 anonymised dataset was created by a member of the Health Board NHS IT team. Prior to
102 anonymisation, the postcode was used to extract the Welsh Index of Multiple Deprivation (WIMD)
103 for each patient, as obtained from <https://wimd.gov.wales/>. As such, ethical approval was not
104 required for this study.

105 Data fields including admission date, clinical outcomes, and laboratory measurements were
106 integrated into an electronic healthcare registry “Cardiff Hospital Admissions Database” (CHAD)
107 using a bespoke software package: CHADBuilder (*see extended methods*). Laboratory test results
108 from the index presentation reported within the first 72 hours of ED presentation were considered
109 as candidate variables.

110 Outcomes

111 28-day mortality was chosen as the primary endpoint in accordance with UK COVID-19 mortality
112 reporting. To support generalisability between studies (4, 16) we performed secondary analysis
113 using the composite endpoint of 28-day mortality or admission to intensive care.

114 Laboratory testing panel

115 All testing was performed in the United Kingdom Accreditation Service (UKAS)-accredited
116 Biochemistry, Immunology, and Haematology Laboratories at the University Hospital of Wales. Cost
117 estimates were obtained from the Health Board Laboratory Medicine Directorate, reflecting
118 consumables, reagent, analyser running and maintenance costs, and staff time chargeable to NHS
119 test requestors.

120 Statistical analysis

121 Statistical significance testing was performed according to the data encountered: for categorical
122 data, such as gender, Fisher’s exact or chi-square testing was performed. For continuous data,
123 Welch’s t-tests were used if the assumptions of normality were met; otherwise non-parametric

124 Mann-Whitney U tests were employed. In edge-cases, permutation testing was performed. Two-
125 sided statistical significance was set at $p < 0.05$, with Bonferroni correction for multiple testing.

126 Model development

127 Candidate laboratory variables were triaged for inclusion based on their membership of core or
128 extended laboratory test panels, before a data-driven approach was applied. This included
129 assessment of variability, individual p-values corrected for multiple comparisons and multi-
130 collinearity with generation of a Spearman's rank correlation matrix.

131 Logistic regression, support vector machines, random forest, and gradient boosted trees were all
132 considered for multivariate predictive models. Models with complexity greater than logistic
133 regression were found to offer little improvement (data not shown). Multivariate logistic regression
134 was implemented in Python (version 3.7) using the Scikit-Learn package (version 0.23) (21) and
135 Statsmodels (version 0.11). Complete case analysis was conducted to enable meaningful comparison
136 between core and extended tests.

137 To minimise bias, models were evaluated using cross-validation with 5-folds, with stratification to
138 account for class imbalance. Performance statistics are reported as the average across all folds with
139 binomial proportion 95% confidence intervals. Model discrimination was assessed by area under
140 receiver operating characteristic curve (ROC AUC), accuracy (balanced by support) and weighted F1
141 score (the average F1 score was calculated for each class and weighted by support). In addition to
142 these performance metrics, threshold-performance curves were generated to assess the effect of
143 the decision threshold on model sensitivity and specificity (22). Source code for all models can be
144 found on GitHub: <https://github.com/burtonrj/CardiffCovidBiomarkers>

145 Our evaluation is reported using the transparent reporting of a multivariable prediction model for
146 individual prognosis or diagnosis (TRIPOD) guidance for Prediction Model development and
147 validation (See Appendix).

148 Patient involvement

149 These data were generated as part of a rapid service improvement and as such patients were not
150 involved in the setting of the research question or interpretation of the study.

151 Results

152 Definition and overview of service evaluation cohort

153 We focused on admissions occurring after the operational roll-out of the first extended laboratory
154 test panel components into standard clinical practice. During this 105 day period, over 13,500 ED
155 attendances were recorded. Of these, 391 adults were admitted via ED with a laboratory-confirmed
156 diagnosis of COVID-19 meeting our definition of likely community-acquired COVID-19 (**Figure 1:**
157 **Study Flowchart**). The median age was 69 years (interquartile range, IQR: 55 - 75 years) with males
158 predominant (52.4%). Within 28-days of index ED attendance, 113 deaths occurred (29% mortality),
159 and 151 patients reached the composite secondary endpoint of intensive care admission/death
160 (39%).

161 *Univariate analysis of laboratory predictors of adverse inpatient course*

162 We next analysed the association between individual candidate variables and patient outcomes to
163 identify important predictors of adverse outcome. Admission clinical variables are presented in
164 **Table 1 (for full dataset, Supplementary S1&S2)**. Advanced age was strongly associated with
165 increased risk of death and the composite of ICU admission and death. In contrast, neither gender
166 nor socio-economic deprivation were associated with 28-day mortality. For laboratory variables,
167 missing data were rare for core test panel components. Within the extended testing panel, hs-Trop
168 and D-dimer were available in 70-80% of patients admitted with COVID-19 within the first 72 hours
169 of ED attendance. An early admission PCT test result was available in 40% of patients, whilst ferritin
170 and LDH levels were recorded in 42-46% of cases. Testing rates were similar between patient
171 survival groups.

172 In univariate analysis of the core laboratory panel components, increased CRP,
173 neutrophil:lymphocyte ratio, urea, creatinine; or decrease in serum albumin were all strongly
174 associated with risk of death. Within the extended panel, D-dimer, hs-Trop and PCT differed
175 between survivors and non-survivors on univariate analysis (**Figure 2; Supplementary S3**). No
176 extended panel members were associated with development of the composite outcome
177 (**Supplementary S4&S5**). Age was associated with several variables (**Supplementary S6**), indicating it
178 could confound the relationship between a test result and mortality.

179 *Development of prognostic model based on core and extended laboratory admission test panels*

180 We therefore used multivariate logistic regression to adjust for the role of age, whilst controlling for
181 gender and WIMD, based on consistent identification of their contribution to outcomes in COVID-19
182 cohorts (23, 24). Restricting to cases with complete data (n=130) across core and extended
183 laboratory tests, we found an optimal combination of core test variables to be CRP, albumin, urea,
184 neutrophil:lymphocyte ratio, creatinine, age, gender and WIMD (**Figure 3, Supplementary S7**). This

185 gave a prognostic AUC of 0.79 (95% confidence interval, CI: 0.67 to 0.91) for 28-day mortality, and
186 0.70 (95% CI: 0.56 – 0.84) for the composite outcome.

187 We next assessed the discriminative value associated with inclusion of extended panel components
188 within our multivariate model, relative to this core test set (**Figure 5**). Addition of D-dimer resulted
189 in a marginal increase in mean AUC score to 0.82, but this was not significantly different (95% CI:
190 0.71 – 0.85) to the performance of core testing alone. Concerning the composite outcome, addition
191 of admission hs-Trop to the core panel resulted in the greatest AUC score: 0.72 (95% CI: 0.60 to 0.83)
192 but again, this did not represent a significant increase in performance to the core panel alone
193 (**Supplementary S7&S8**). Consideration of extended test components individually or in combination
194 did not improve upon this. To internally validate these findings, we performed stratified cross-
195 validation, observing convergence of training and validation curves, thus suggesting a low-risk of
196 over-fitting associated with these models (**Supplementary S9&S10**). Assessing the calibration of
197 these models across a range of performance metrics by varying the decision threshold (the
198 probability at which a patient is predicted to either die or be admitted to intensive care), we found
199 no significant benefit from addition of the extended relative to the core laboratory testing panel
200 (**Supplementary S11&S12**).

201

202 *Patterns of extended panel requesting during the first wave*

203 Local cost estimates for NHS requesting the core laboratory panel totalled £16.44 per patient, with
204 an additional £55.48 incurred for the extended set (**Supplementary S13**). In order to contextualise
205 testing beyond the cohort of community-acquired COVID-19, we constructed a run-chart of test
206 requesting within the first 72 hours of admission via ED and COVID-19-related admissions (**Figure 4**).
207 D-dimer and hs-Trop testing rates rose in line with COVID-19 admissions during March and April,
208 with a 1-2 week delay apparent for LDH, ferritin, and PCT requesting. Strikingly, whilst COVID-19
209 admissions declined following the April peak, the intensity of extended biomarker panel requesting
210 remained. Using January and June 2020 to represent requesting patterns before and after the first
211 wave of COVID-19, mean monthly requesting increased by 29.7%, 224%, and 588% for hs-Trop,
212 ferritin, and LDH, respectively. In contrast, recorded monthly ED attendance fell by 24.0% over this
213 period. PCT and quantitative D-dimer were specifically introduced in response to the pandemic, but
214 still averaged >50 daily test requests within the early admission period during June. Across the
215 evaluation period, over 6,400 D-dimer and 5,400 PCT requests were made, with an estimated service
216 cost of £246,000.

217

218 Discussion

219 To support the effective and efficient use of resources through evidence-based clinical practice, we
220 conducted a service evaluation determining the prognostic value associated with routinely
221 performed laboratory investigation in 130 adults admitted with community acquired SARS-CoV-2
222 infection. By leveraging a bespoke electronic healthcare registry, we reveal an extended panel
223 (including D-dimer, LDH, hs-Trop, ferritin, PCT) provided only limited additional prognostic
224 information beyond that provided by components of the core panel (FBC, U&E, LFT, and CRP).
225 Together, this directs refinement of the clinical testing panel employed before and during future
226 potential waves, underlining the relevance of this registry-approach to support cost-utility of
227 investigation pathways.

228 We identified 5 studies within the peer-reviewed and pre-print literature concerning laboratory
229 biomarker risk stratification of adult COVID-19 admissions in the UK population (4, 16-19). The
230 largest reported, an 8-point pragmatic risk score developed by the ISARIC Consortium, achieved a
231 modest AUC performance score of 0.77 (95% CI 0.76 to 0.77) when predicting 28-day mortality (18).
232 To date, only 1 UK study has considered the prognostic role of variables within our extended
233 laboratory panel (16). In their prospective analysis of 155 patients, Arnold et al. found conventional
234 laboratory biomarkers such as CRP and neutrophil elevation offered limited prognostic performance
235 (with AUC scores of 0.52 and 0.54, respectively), whilst ferritin, PCT, hs-Trop, and LDH performed
236 with AUC scores of 0.65 to 0.71. It is important to note that within this study cohort, the incidence of
237 clinical deterioration was low (overall mortality was only 4% vs 29% for our service evaluation) which
238 may have limited the power of the study (16). This highlights regional variation in rates of
239 hospitalisation and mortality, and further motivated a locally-led assessment of practice.

240 Consistent with the emerging COVID-19 literature, we observed an association between laboratory
241 markers of acute phase inflammatory response (elevated neutrophil count, CRP; depressed
242 lymphocytes and albumin), cardiac injury, activation of thrombosis, and renal impairment with
243 subsequent adverse outcome (6, 23, 25). We found a combination of CRP, albumin, urea,
244 neutrophil:lymphocyte ratio, and creatinine alongside simple demographics achieved an AUC of 0.79
245 (95% CI: 0.67 – 0.91) when predicting 28-day mortality, and 0.70 (95% CI: 0.56 – 0.84) for the
246 composite endpoint. We found no evidence that use of this panel at admission significantly
247 improved performance for either outcome. Importantly, we identified use of the extended
248 laboratory panel continued despite falling rates of COVID-19 presentations, indicating a change in
249 routine test requesting patterns. Addition of the extended laboratory test panel equates to £54 per
250 patient (a relative cost increase of over 400% to the core panel alone), with significant cost
251 ramifications when performed at scale.

252 Our service evaluation has several strengths, notably assessment of the performance of an extended
253 panel of laboratory tests not widely considered in UK prognostic studies to date (4, 16-19). These
254 tests were integrated into routine practice prior to the local peak of the pandemic, based on
255 available literature and national guidelines (15). In contrast with the batched analysis undertaken
256 under research condition in previous studies (16), all tests described here were conducted by
257 accredited laboratories using platforms calibrated to international reference standards, facilitating
258 future data sharing. Our multivariate approach is well-suited to investigate whether specific
259 laboratory tests provide additional prognostic value beyond conventional parameters (26), using
260 inclusion criteria and clinically-relevant endpoints in line with other reported studies (4, 17, 18).
261 Finally, we considered the service costs that accompanied implementing these tests into routine
262 practice (27), a relevant factor often neglected in other publications.

263 Our evaluation also has a number of limitations, reflecting the challenges of clinical data collection
264 during an epidemic. It represents retrospective experience from a single tertiary referral centre,
265 limiting sample size and the generalisability of our findings. Secondly, availability of extended test
266 panel results during the early admission period was mixed. Admission D-dimer and hs-Trop results
267 were available for 70-80% of patients, comparing favourably to a similar UK registry-based study
268 where D-dimer results were only available at time of admission in 37.2% (17). Conversely, we
269 observed high rates of missing data for LDH, ferritin, and PCT, undermining their relevance as a
270 prognostic tool. This was likely due to operational factors such as a delay in test roll out relative to
271 epidemic peak, and requirement for an additional sample tube. Because it cannot be assumed that
272 data are missing at random, we chose to perform complete case analysis. Although this limits our
273 statistical power, it avoids unfounded assumptions and potentially invalid imputation. In its current
274 form, the CHAD-registry lacks detailed information on patient-level physiological observations,
275 nature of co-morbidities, and therapeutic interventions. Similarly, all registry-linked laboratory
276 values were available to clinicians, and are likely to have influenced management decisions. With
277 advances in clinical care diagnostics, therapeutics are likely to alter the observed performance of the
278 prognostic model. These limitations apply equally to pragmatic risk-scores (4, 16, 18). Finally, we
279 recognise our evaluation consider the index test result and a specific question of inpatient prognosis,
280 and additional indications exist for requesting components of the extended laboratory tests that fall
281 outside of our primary and secondary endpoints. For instance, the use of PCT is often employed to
282 support antibiotic stewardship (28), and was integrated into routine practice locally in early April
283 2020. There may also be merit in more targeted use of additional testing particularly as therapeutic
284 options evolve. Hence, whilst we highlight the significant associated healthcare costs with
285 implementation of extended laboratory testing, we do not make specific claims concerning the
286 potential savings from discontinuing unnecessary investigations (27).

287 *Implications for practice*

288 Laboratory markers supporting early risk stratification of patients are often used in the ED setting,
289 and have been shown to benefit patient triage (29). Our data suggest that systematic testing of
290 COVID-19-positive patients upon admission with an “extended” laboratory panel provide little
291 additional prognostic information for COVID-19 mortality or intensive care admission “core” tests.
292 Besides the financial impact, over-requesting of laboratory tests are likely to increase the number of
293 false-positive results, with the potential to lead to further potentially harmful tests (e.g. computed
294 tomography pulmonary angiography in patients with marginally elevated D-dimer but no clinical
295 indication of thromboembolic disease) (30). We suggest that the use of these laboratory markers be
296 targeted to patients with specific clinical indications for these, such as PCT to guide antibiotic
297 prescription or hs-Trop in patients with suspected myocardial injury.

298 In conclusion, we report our real-world experience from the use of an extended laboratory
299 prognostic testing panel in patients hospitalised with community-acquired COVID-19. These findings
300 directly inform clinical practice, guiding cost-efficient use of resources in potential future waves.

301

302 *Data sharing*

303 Requests for data sharing will be reviewed by a clinical and information regulatory governance panel
304 and considered on an individual basis.

305 *Author contributions*

306 MJP and SJ conceived the service evaluation. MJP wrote the first draft, supervised by SJ, and JU. LS,
307 RA and RJB performed initial data extraction. RJB constructed CHAD, and led data analysis support
308 for multivariate modelling from AA and PK. All authors contributed scientific and clinical guidance
309 regarding design, feature selection, and have reviewed the final draft.

310 *Acknowledgements*

311 We thank James Webb and Philip Clee (NHS IT governance) for their advice and guidance in
312 facilitating the Electronic Healthcare Registry underpinning this service evaluation, and Nigel Roberts
313 and Alun Roderick for assistance in providing costings for laboratory tests. Additional support was
314 provided by Professor Valentina Escott-Price, Dr Martyn Stones and Dr Irina Erchova.

315 *Conflict of interest statement*

316 SJ has participated in advisory boards, trials, projects, and has been a speaker CSL Behring, Takeda,
317 Thermofisher, Swedish Orphan Biovitrum, Biotest, Binding Site, BPL, Octapharma, Sanofi, LFB,
318 Pharming, Biocryst, Zarodex, Weatherden and UCB Pharma.

319 *Sources of funding*

320 This study was supported by UK Research and Innovation (UKRI) and the National Institute for Health
321 Research (NIHR) via the UK Coronavirus Immunology Consortium (UK-CIC). MJP was funded by the
322 Welsh Clinical Academic Training (WCAT) programme, is a participant in the NIH Graduate
323 Partnership Program, and recipient of a Career Development Award from the Association of Clinical
324 Pathologists (ACP). RJB was supported by a School of Medicine PhD Studentship (to R.J.B.); IH was
325 supported by Wellcome Trust Senior Research Fellow; M.E. was supported by the Welsh European
326 Funding Office's Accelerate programme; J.U. was supported by MRC-NIHR Clinical Academic
327 Research Partnership (grant number MR/T023791/1). The funders had no role in study design, data
328 collection and analysis, decision to publish, or preparation of the manuscript.

329

330

331

332

333 **Key Messages**

334

335 During the first wave of the pandemic, the literature and guidance from the UK Royal College of
336 Pathologists supported the use of extended biochemistry and haematology testing upon admission
337 to support risk stratification of patients with COVID-19 infection- however the prognostic
338 performance of these markers remains unclear.

339

340 Our service evaluation suggests that systematic testing of COVID-19-positive patients with likely
341 community-acquired disease upon admission with an “extended” laboratory panel (high-sensitivity
342 Troponin I, Ferritin, Lactate Dehydrogenase, procalcitonin, or quantitative D-dimer) provides limited
343 additional prognostic information for 28-day mortality or intensive care admission, relative to
344 conventional “core” tests such as a full blood count, renal function, C-reactive protein combined
345 with simple demographics.

346

347 Few clinicians know the cost of the tests they request for their patients. With individual “extended”
348 panel members costing over £20 per test, and thousands of tests requested per month within a
349 single hospital, these costs quickly escalate.

350

351 Besides the financial impact, over-requesting of laboratory tests are likely to increase the number of
352 false-positive results, with the potential to lead to further potentially harmful investigations (e.g.
353 computed tomography pulmonary angiography in patients with marginally elevated D-dimer but no
354 clinical indication of thromboembolic disease). We suggest that the use of these laboratory markers
355 be targeted to patients with specific clinical indications for these, such as procalcitonin to guide
356 antibiotic stewardship or hs-Troponin I in patients with suspected myocardial injury.

357

358

359 References

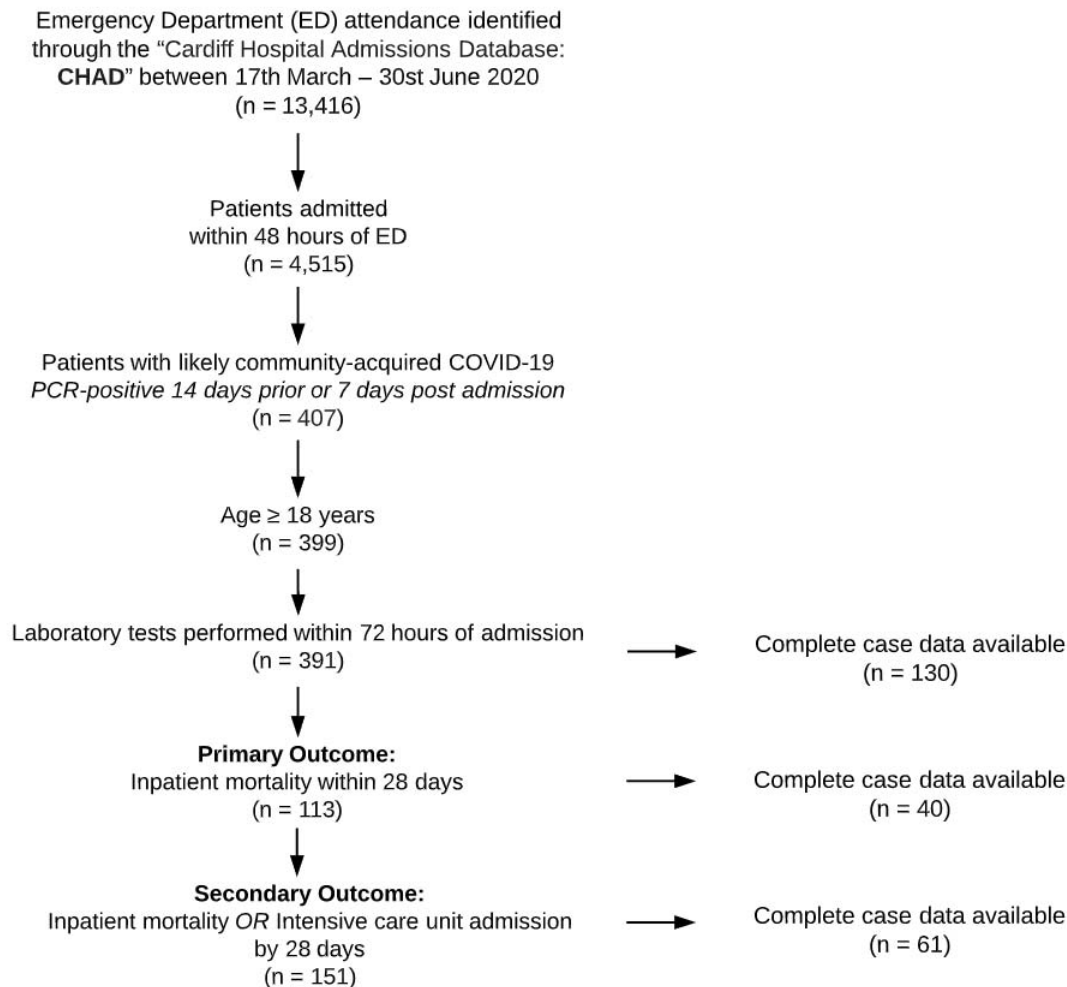
- 360 1. Zhu N, Zhang D, Wang W, Li X, Yang B, Song J, et al. A Novel Coronavirus from Patients with
361 Pneumonia in China, 2019. *N Engl J Med.* 2020;382(8):727-33.
- 362 2. The Johns Hopkins Coronavirus Resource Center (CRC) <https://coronavirus.jhu.edu/>
363 [accessed 30-SEP-2020]
- 364 3. Singer AJ, Morley EJ, Henry MC. Staying Ahead of the Wave. *New England Journal of*
365 *Medicine.* 2020.
- 366 4. Galloway JB, Norton S, Barker RD, Brookes A, Carey I, Clarke BD, et al. A clinical risk score to
367 identify patients with COVID-19 at high risk of critical care admission or death: An observational
368 cohort study. *Journal of Infection.* 2020;81(2):282-8.
- 369 5. Grasselli G, Pesenti A, Cecconi M. Critical Care Utilization for the COVID-19 Outbreak in
370 Lombardy, Italy: Early Experience and Forecast During an Emergency Response. *JAMA.*
371 2020;323(16):1545-6.
- 372 6. Skevaki C, Fragkou PC, Cheng C, Xie M, Renz H. Laboratory characteristics of patients
373 infected with the novel SARS-CoV-2 virus. *Journal of Infection.* 2020;81(2):205-12.
- 374 7. Rhodes A, Ferdinande P, Flaatten H, Guidet B, Metnitz PG, Moreno RP. The variability of
375 critical care bed numbers in Europe. *Intensive Care Medicine.* 2012;38(10):1647-53.
- 376 8. Welsh Government: Together for Health – A Delivery Plan for the Critically Ill
377 <http://www.wales.nhs.uk/documents/delivery-plan-for-the-critically-ill.pdf2013>.
- 378 9. Gao Y, Li T, Han M, Li X, Wu D, Xu Y, et al. Diagnostic utility of clinical laboratory data
379 determinations for patients with the severe COVID-19. *Journal of Medical Virology.* 2020;92(7):791-
380 6.
- 381 10. Liu F, Li L, Xu M, Wu J, Luo D, Zhu Y, et al. Prognostic value of interleukin-6, C-reactive
382 protein, and procalcitonin in patients with COVID-19. *Journal of Clinical Virology.* 2020;127:104370.
- 383 11. Yu B, Li X, Chen J, Ouyang M, Zhang H, Zhao X, et al. Evaluation of variation in D-dimer levels
384 among COVID-19 and bacterial pneumonia: a retrospective analysis. *Journal*
385 *of Thrombosis and Thrombolysis.* 2020:1-10.
- 386 12. Shi S, Qin M, Cai Y, Liu T, Shen B, Yang F, et al. Characteristics and clinical significance of
387 myocardial injury in patients with severe coronavirus disease 2019. *European Heart Journal*
388 2020;41(22):2070-9.
- 389 13. Guan W-j, Ni Z-y, Hu Y, Liang W-h, Ou C-q, He J-x, et al. Clinical Characteristics of Coronavirus
390 Disease 2019 in China. *New England Journal of Medicine.* 2020;382(18):1708-20.
- 391 14. Figliozzi S, Masci P-G, Ahmadi N, Tondi L, Koutli E, Aimo A, et al. Predictors of Adverse
392 Prognosis in Covid-19: A Systematic Review and Meta-analysis. *European Journal of Clinical*
393 *Investigation.* 50:e13362.
- 394 15. Royal College of Pathologists: Guidance on the use and interpretation of clinical
395 biochemistry tests in patients with COVID-19 infection. 17th April 2020. Available:
396 [https://www.rcpath.org/uploads/assets/3f1048e5-22ea-4bda-953af20671771524/G217-RCPath-](https://www.rcpath.org/uploads/assets/3f1048e5-22ea-4bda-953af20671771524/G217-RCPath-guidance-on-use-and-interpretation-of-clinical-biochemistry-tests-in-patients-with-COVID-19-infection.pdf)
397 [guidance-on-use-and-interpretation-of-clinical-biochemistry-tests-in-patients-with-COVID-19-](https://www.rcpath.org/uploads/assets/3f1048e5-22ea-4bda-953af20671771524/G217-RCPath-guidance-on-use-and-interpretation-of-clinical-biochemistry-tests-in-patients-with-COVID-19-infection.pdf)
398 [infection.pdf](https://www.rcpath.org/uploads/assets/3f1048e5-22ea-4bda-953af20671771524/G217-RCPath-guidance-on-use-and-interpretation-of-clinical-biochemistry-tests-in-patients-with-COVID-19-infection.pdf).
- 399 16. Arnold DT, Attwood M, Barratt S, Elvers K, Morley A, McKernon J, et al. Blood parameters
400 measured on admission as predictors of outcome for COVID-19; a prospective UK cohort study.
401 *medRxiv.* 2020:2020.06.25.20137935.
- 402 17. Gupta RK, Marks M, Samuels THA, Luintel A, Rampling T, Chowdhury H, et al. Systematic
403 evaluation and external validation of 22 prognostic models among hospitalised adults with COVID-
404 19: An observational cohort study. *medRxiv.* 2020:2020.07.24.20149815.
- 405 18. Knight SR, Ho A, Pius R, Buchan I, Carson G, Drake TM, et al. Risk stratification of patients
406 admitted to hospital with covid-19 using the ISARIC WHO Clinical Characterisation Protocol:
407 development and validation of the 4C Mortality Score. *British Medical Journal.* 2020;370:m3339.
- 408 19. Abdulaal A, Patel A, Charani E, Denny S, Mughal N, Moore L. Prognostic modelling of COVID-
409 19 using artificial intelligence in a UK population. *Journal of Medical Internet Research.* 2020.
- 410 20. Public Health Wales Rapid COVID-19 Surveillance : Confirmed Case Data by Local Authority
411 of Residence online dashboard:

- 412 [https://public.tableau.com/profile/public.health.wales.health.protection#!/vizhome/RapidCOVID-](https://public.tableau.com/profile/public.health.wales.health.protection#!/vizhome/RapidCOVID-19virology-Public/Headlinesummary2020)
413 [19virology-Public/Headlinesummary2020](https://public.tableau.com/profile/public.health.wales.health.protection#!/vizhome/RapidCOVID-19virology-Public/Headlinesummary2020)
- 414 21. Pedregosa F, Varoquaux G, Gramfort A, Michel V, Thirion B, Perrot M, et al. Scikit-learn:
415 Machine Learning in Python. *Journal of Machine Learning Research*. 2011;12(85)(85):2825-30.
- 416 22. Singh K. Runway <https://github.com/ML4LHS/runway>: GitHub; 2020 [
- 417 23. Wynants L, Van Calster B, Collins GS, Riley RD, Heinze G, Schuit E, et al. Prediction models for
418 diagnosis and prognosis of covid-19 infection: systematic review and critical appraisal. *BMJ*.
419 2020;369:m1328.
- 420 24. Williamson E, Walker AJ, Bhaskaran KJ, Bacon S, Bates C, Morton CE, et al. OpenSAFELY:
421 factors associated with COVID-19-related hospital death in the linked electronic health records of 17
422 million adult NHS patients. *medRxiv*. 2020:2020.05.06.20092999.
- 423 25. Petrilli CM, Jones SA, Yang J, Rajagopalan H, O'Donnell L, Chernyak Y, et al. Factors
424 associated with hospital admission and critical illness among 5279 people with coronavirus disease
425 2019 in New York City: prospective cohort study. *BMJ*. 2020;369:m1966.
- 426 26. Moons KGM, Royston P, Vergouwe Y, Grobbee DE, Altman DG. Prognosis and prognostic
427 research: what, why, and how? *BMJ*. 2009;338:b375.
- 428 27. Broughton PM, Woodford FP. Benefits of costing in the clinical laboratory. *Journal of Clinical*
429 *Pathology*. 1983;36(9):1028-35.
- 430 28. Han J, Gatheral T, Williams C. Procalcitonin for patient stratification and identification of
431 bacterial co-infection in COVID-19. *Clinical Medicine*. 2020;20(3):e47-e.
- 432 29. Kristensen M, Iversen AKS, Gerds TA, Østervig R, Linnet JD, Barfod C, et al. Routine blood
433 tests are associated with short term mortality and can improve emergency department triage: a
434 cohort study of >12,000 patients. *Scandinavian Journal of Trauma, Resuscitation and Emergency*
435 *Medicine*. 2017;25(1):115.
- 436 30. Bindraban RS, Ten Berg MJ, Naaktgeboren CA, Kramer MHH, Van Solinge WW, Nanayakkara
437 PWB. Reducing Test Utilization in Hospital Settings: A Narrative Review. *Ann Lab Med*.
438 2018;38(5):402-12.
- 439
- 440

441 **Table 1: Demographic and selected clinical laboratory predictor variables on**
 442 **admission for evaluation cohort.**
 443 *Variables captured in the summarised cohort of community-acquired PCR-confirmed COVID-19 cases*
 444 *admitted through the ED between 17th March 2020 and 30th June 2020. Summary statistics are given*
 445 *as the median and range for continuous variables and absolute counts for discrete variables. * Welsh*
 446 *index of multiple deprivation, WIMD, is ranked from 1 (most deprived) to 1,909 (least deprived), and*
 447 *presented as frequencies within each quartile. †Fischer’s exact test.*

Variable	Survivors (n= 278)		Non-survivors (n=113)		p-value
	Frequency	% Missing	Frequency	% Missing	
Gender		0		0	
Male	141 (50.7%)	-	64 (56.6%)	-	0.316†
Female	137 (49.3%)	-	49 (44.4%)	-	
WIMD*		2.52		0.885	0.228†
Quartile 1 (< 246)	65 (23.4%)	-	29 (25.6%)	-	
Quartile 2 (246 – 871)	61 (21.9%)	-	35 (31.0%)	-	
Quartile 3 (872 – 1672)	73 (26.3%)	-	23 (20.4%)	-	
Quartile 4 (> 1672)	72 (25.9%)	-	25 (22.1%)	-	
	Median [IQR]		Median [IQR]		
Age, years	63.5 [51.25 - 77.75]	0	81.0 [71.0 - 88.0]	0	< 0.0001
“Core” test component			Median [IQR]		
Albumin, g/L	33.0 [29.0 - 36.0]	3.24	29.0 [26.0 - 32.0]	1.77	< 0.0001
Alkaline phosphatase U/L	80.0 [63.0 - 111.5]	0.04	100.0 [76.0 - 133.5]	0.02	0.0006
Alanine transaminase U/L	27.0 [17.0 - 46.0]	0.04	23.0 [14.0 - 32.0]	0.02	0.256
Bilirubin µmol/L	10.0 [7.0 - 15.0]	0.04	12.0 [8.0 - 17.0]	0.02	0.0018
C-reactive protein, mg/L	70.5 [21.0 - 131.75]	0.00	98.0 [55.75 - 164.75]	2.65	0.005
Creatinine, µmol/L	82.0 [66.0 - 105.0]	0.36	111.0 [79.0 - 192.0]	0.00	< 0.0001
Estimated GFR ml/min/1.73m²	75.0 [55.0 - 89.0]	0.01	51.0 [25.0 - 74.0]	0.00	< 0.0001
Globulin g/L	38.0 [34.0 - 42.0]	0.07	40.0 [36.0 - 45.75]	0.06	0.0161
Haemoglobin g/L	135.0 [122.0 - 149.0]	0.00	135.0 [122.0 - 149.0]	0.00	0.036
Lymphocyte count x10⁹/L	1.0 [0.7 - 1.4]	0.00	0.9 [0.6 - 1.22]	0.01	0.961
Neutrophil count x10⁹/L	5.4 [3.7 - 7.98]	0.00	7.3 [4.57 - 9.8]	0.01	0.017
Neutrophil : Lymphocyte ratio	5.25 [3.25 - 9.81]	0.36	8.11 [4.34 - 14.53]	0.88	0.011
Platelet count x10⁹/L	234.0 [183.75 - 294.5]	0.00	216.0 [160.0 - 285.0]	0.00	0.210
Potassium mmol/L	3.9 [3.6 - 4.3]	0.01	4.1 [3.73 - 4.6]	0.03	0.0006
Protein g/L	71.0 [67.0 - 76.0]	0.07	70.0 [65.0 - 74.0]	0.06	0.04
Sodium mmol/L	137.0 [134.0 - 139.0]	0.00	138.0 [134.0 - 141.0]	0.00	< 0.0001
Urea mmol/L	5.7 [4.0 - 8.5]	0.36	10.2 [7.2 - 16.2]	0.00	< 0.0001
White blood cell count x10⁹/L	7.35 [5.3 - 9.93]	0.00	9.0 [6.4 - 12.3]	0.00	0.016
“Extended” test component					
Ferritin µg/L	325.0 [125.0 - 828.0]	57.9	482.0 [245.5 - 993.5]	54.9	0.395
High sensitivity D-dimer µg/L	926.5 [587.75 - 1750.0]	28.1	1497.0 [929.0 - 3885.0]	30.1	0.0003
High Sensitivity Troponin I ng/L	7.0 [3.0 - 23.0]	24.8	35.5 [15.75 - 117.0]	22.1	< 0.0001
Lactate dehydrogenase U/L	349.5 [270.25 - 549.75]	53.2	383.5 [290.5 - 501.25]	54.0	0.999
Procalcitonin µg/L	0.14 [0.06 - 0.38]	41.4	0.31 [0.09 - 0.86]	38.9	0.019

449 **Figure 1: Study Flowchart**

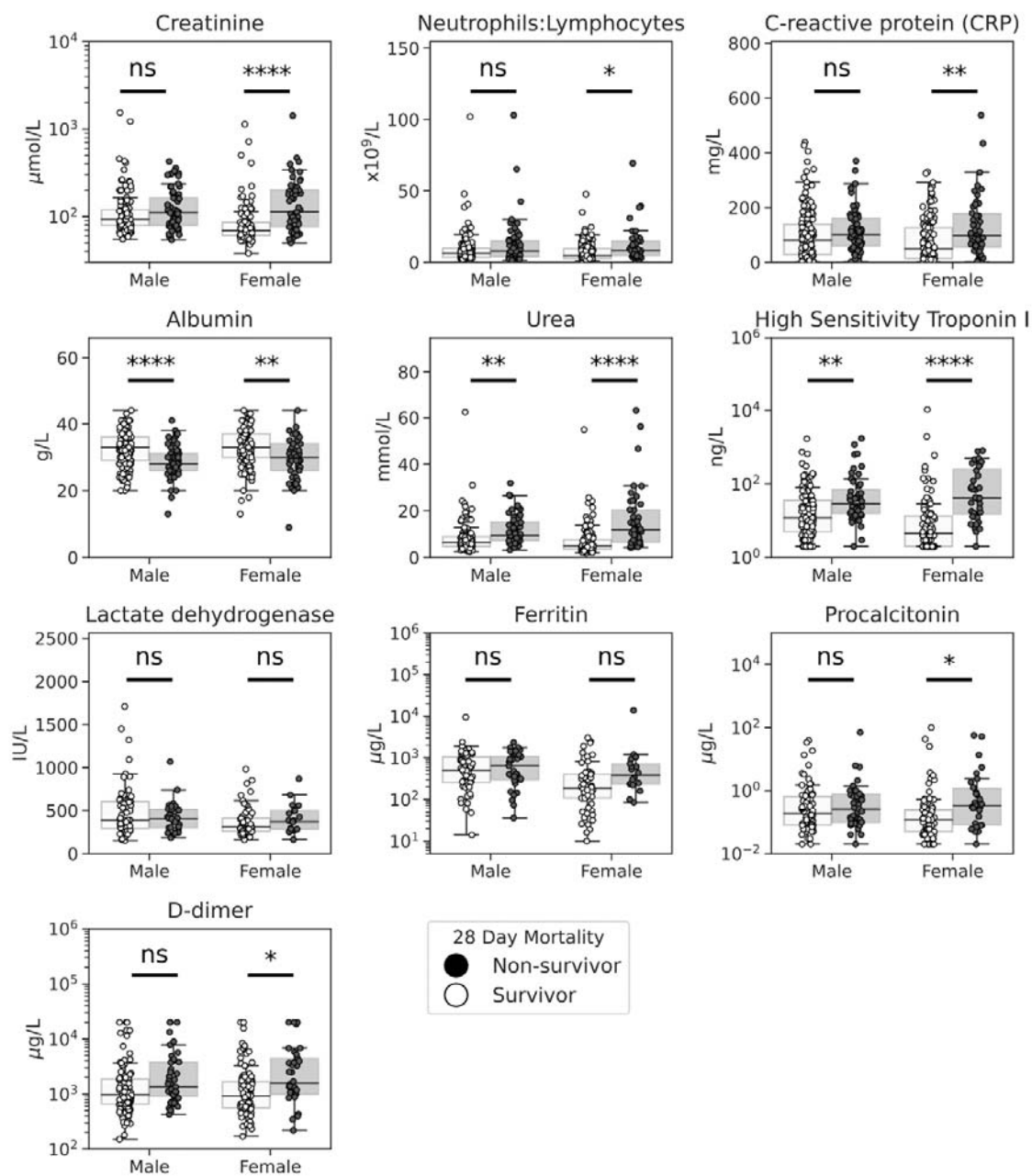


450

451

452 Figure 2: Laboratory test results according to survival outcome and grouped by
 453 gender

454 **Caption:** Box and swarm plots showing the initial laboratory test results from laboratory-confirmed
 455 COVID-19 patients, grouped by gender and 28-day mortality. Example variables considered from the
 456 components of the core laboratory test panel. * indicates level of significance, assessed by Mann-
 457 Whitney U test with correction for multiple testing: * $p < 0.05$, ** $p < 0.01$, *** $p < 0.005$, **** $p < 0.001$.

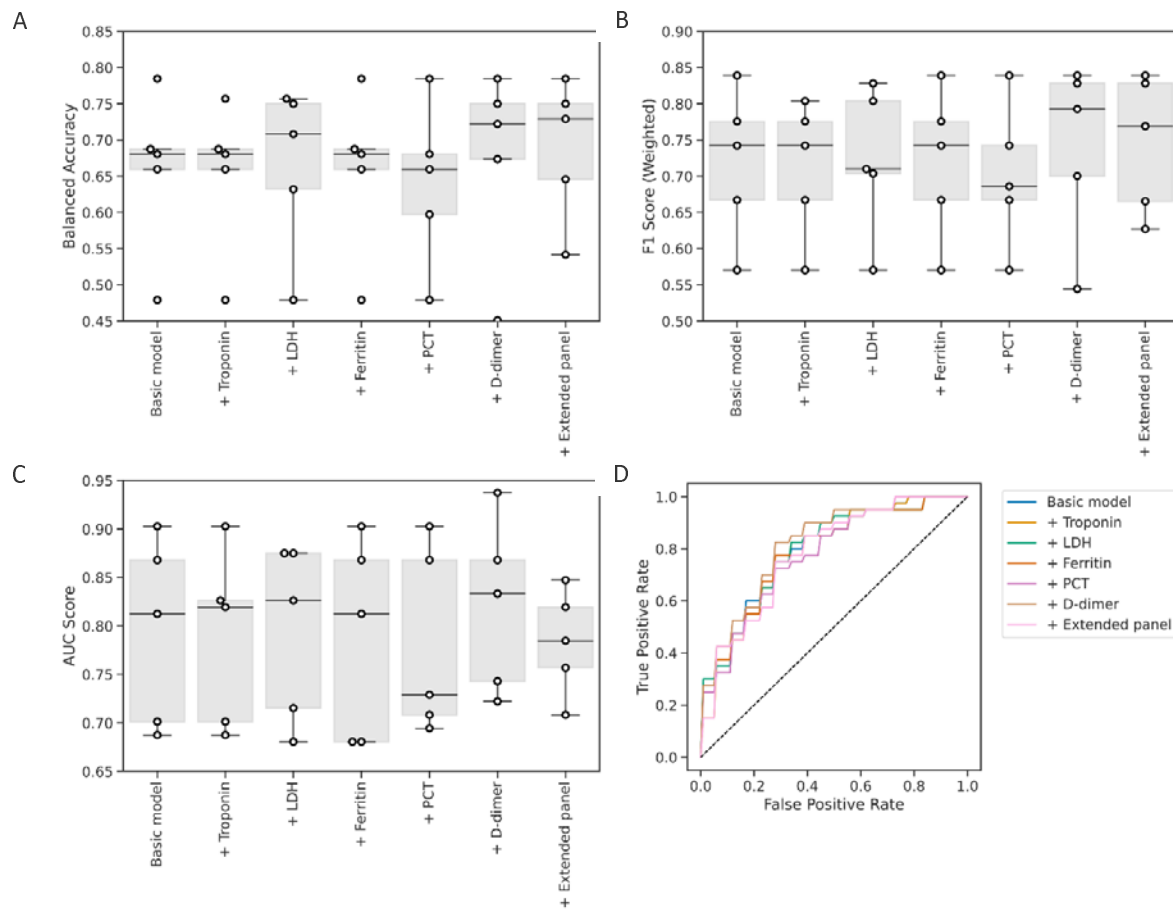


458

459

460

461 Figure 3: Balanced accuracy (A), weighted F1 score (B), AUC score (C) and ROC
462 curves (D) for models with sequential inclusion of extended biomarkers for prediction

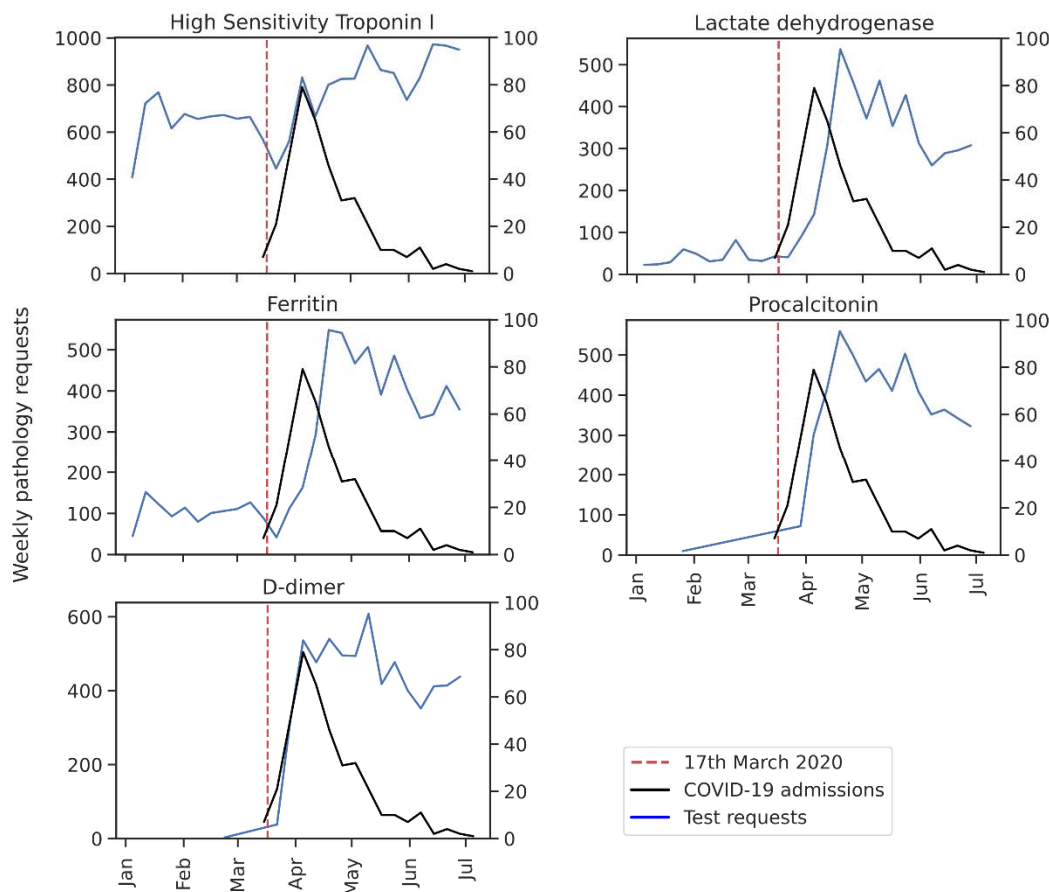


463 of 28 day mortality

464

465 Figure 4: Daily COVID-19 admission rates and test requesting patterns during the
466 early admission period
467

468 **Caption:** Run-chart showing Emergency Unit (ED) admission rates for patients with confirmed
469 laboratory-confirmed COVID-19 (right y-axis, black), and accompanying tests performed within 72
470 hours of ED attendance (left y-axis, blue) during the first wave of the COVID-19 pandemic. The dotted
471 line indicates the roll-out of extended panel testing from 17th March 2020.



472
473