

1 **Poor metabolic health increases COVID-19-related mortality in the**

2 **UK Biobank sample**

3

4 **Short title**

5 Metabolic health and COVID-19

6

7 **Authors**

8 Filip Morys<sup>1</sup>, Alain Dagher<sup>1</sup>

9 <sup>1</sup>Montreal Neurological Institute, Department of Neurology and Neurosurgery, McGill

10 University, Montreal, Quebec, Canada

11

12 **Correspondence**

13 Alain Dagher

14 Montreal Neurological Institute

15 3801 University, H3A 2B4 Montreal, Canada

16 [alain.dagher@mcgill.ca](mailto:alain.dagher@mcgill.ca)

17

18 **Conflict of interest**

19 The authors have declared that no competing interests exist

20

21 **Keywords**

22 Metabolic health, obesity, COVID-19

23

24 **Abstract**

25 Previous studies link obesity, components of metabolic health, such as hypertension  
26 or inflammation, to increased hospitalisations and death rates of patients with  
27 COVID-19. Here, in two overlapping samples of over 1,000 individuals from the UK  
28 Biobank we investigate whether metabolic health as measured by waist  
29 circumference, dyslipidaemia, hypertension, diabetes, and systemic inflammation is  
30 related to increased COVID-19 infection and mortality rates. Using logistic regression  
31 and controlling for confounding variables such as socioeconomic status, age, sex or  
32 ethnicity, we find that individuals with worse metabolic health (measured on average  
33 eleven years prior to 2020) have an increased risk for COVID-19-related death  
34 (adjusted odds ratio: 1.67). We also find that specific factors contributing to  
35 increased mortality are increased serum glucose levels, systolic blood pressure and  
36 waist circumference.

37

## 38 **Introduction**

39 Since the beginning of the COVID-19 pandemic, mounting evidence supports an  
40 association between obesity and poor outcomes (1–12). The association holds for  
41 both obesity and for obesity-associated metabolic health – hypertension, diabetes,  
42 dyslipidaemia, and systemic inflammation (13). Similarly, obesity and excess  
43 adipose tissue have also been associated with higher risk of SARS-CoV-2 infection  
44 (10,14,15).

45 Previous studies, however, have tended to use small sample sizes, focus  
46 predominantly on the effects of body mass index (BMI) as a measure of obesity, or  
47 not account for confounding factors, such as ethnicity or socioeconomic status  
48 (14,16–18). Since ethnicity and socioeconomic status are themselves associated  
49 with obesity and metabolic health (19,20), they could confound interpretation of  
50 analyses in patients with COVID-19.

51 Here, we aim to present a comprehensive evaluation of obesity-associated metabolic  
52 risk factors that might be related to poor health outcomes in SARS-CoV-2 infected  
53 patients while controlling for confounding variables and limiting potential collider bias,  
54 which has previously resulted in incorrect epidemiological conclusions (21–23). We  
55 investigate whether metabolic health is related to higher chance for SARS-CoV-2  
56 infection, but also COVID-19-related death.

57

## 58 **Materials and Methods**

### 59 *Participants*

60 In this study, we used the UK Biobank dataset – a large scale study with extensive  
61 phenotyping carried out in the United Kingdom (24). This study was performed under  
62 UK Biobank application ID 35605. SARS-CoV-2 real-time PCR test results in the UK

63 Biobank dataset are derived from the Public Health England microbiology database  
 64 Second Generation Surveillance System that is dynamically linked to the UK  
 65 Biobank database (25). Here we only included individuals who were recorded as  
 66 tested for SARS-CoV-2. We distinguished between two samples for two aims of our  
 67 project: Sample 1 – a larger sample (n=12,659) of all individuals who were tested for  
 68 SARS-CoV-2 between 16<sup>th</sup> March 2020 and 24<sup>th</sup> August 2020, to investigate the risk  
 69 of COVID-19 infection and how it is related to metabolic health; and Sample 2, a  
 70 subset of Sample 1 consisting of individuals who tested positive for COVID-19  
 71 (n=1,152). We also obtained data on mortality from COVID-19 for all the individuals  
 72 included in our study population.

73 Sample characteristics can be found in Table 1. The discrepancies in number of  
 74 patients who tested positive in both samples is due to outlier exclusions (see section:  
 75 'Measures used in the study'). All participants signed written informed consent prior  
 76 to participating in the UK Biobank study, which was approved by the North-West  
 77 Multi-centre Research Ethics Committee (11/NW/0382). All UK Biobank actions are  
 78 overseen by the UK Biobank Ethics Advisory Committee.

79

80 Table 1 Participants characteristics.  
 81

Measure	Sample 1 (n=12,659)			Sample 2 (n=1,152)		
	SARS-CoV-2	SARS-CoV-2	p-	SARS-CoV-2	SARS-CoV-2	p-
	<i>positive patients</i>	<i>negative patients</i>	<i>value</i>	<i>survivors</i>	<i>deceased</i>	<i>value</i>
	<i>mean (SD)</i>	<i>mean (SD)</i>		<i>mean (SD)</i>	<i>mean (SD)</i>	
n	1,138	11,521		972	180	
COVID-19 mortality rate		1.42%			15.63%	
Age in years	68 (8)	70 (8)	<0.001	67 (9)	74 (6)	<0.001
Sex distribution	47.36 % women	52.32 % women	0.002	49.07 % women	36.67 %	0.003
Waist circumference (cm)	93.38 (13.89)	92.07 (13.69)	0.003	92.55 (13.62)	98.62 (14.48)	<0.001

Serum HDL (mmol/l)	1.36 (0.34)	1.43 (0.38)	<0.001	1.37 (0.45)	1.35 (0.32)	0.446
Serum TG (mmol/l)	1.78 (1.04)	1.77 (1.02)	0.545	1.78 (1.05)	1.88 (1.01)	0.199
HbA1c (mmol/mol)	35.83 (4.51)	35.76 (4.33)	0.637	35.73 (4.62)	36.99 (5.23)	<b>0.003</b>
Serum glucose (mmol/l)	4.98 (0.64)	5.00 (0.63)	0.318	4.96 (0.63)	5.19 (0.74)	<b>&lt;0.001</b>
Serum C-reactive protein (mg/l)	3.00 (5.23)	2.84 (4.45)	0.308	2.89 (5.14)	3.98 (7.22)	0.054
Systolic blood pressure (mmHg)	137.20 (18.59)	138.55 (18.55)	<b>0.019</b>	135.71 (18.15)	145.76 (18.33)	<b>&lt;0.001</b>
Diastolic blood pressure (mmHg)	82.46 (10.25)	82.24 (9.94)	0.484	82.21 (10.31)	84.03 (10.03)	<b>0.027</b>
Diabetes	9.49 %	7.83 %	0.055	8.95 %	15.56 %	<b>0.010</b>
Hypertension	41.65 %	42.32 %	0.685	38.17 %	62.22 %	<b>&lt;0.001</b>

82 SD – standard deviation, HDL – high density lipoprotein cholesterol, TG – triglycerides, HbA1C – haemoglobin  
 83 A1c. P-values reflect significance of within samples differences calculated with t-tests in case of numerical  
 84 variables and chi-squared tests in case of categorical variables.  
 85

#### 86 *Measures used in the study*

87 To investigate how metabolic health is related to SARS-CoV-2 infection and mortality  
 88 rates, we used the following measures: waist circumference, serum triglyceride (TG),  
 89 serum high density lipoprotein cholesterol (HDL), glycated haemoglobin (HbA1c),  
 90 serum glucose (corrected for fasting times prior to blood drawing), serum C-reactive  
 91 protein (26), previous diabetes diagnosis, resting systolic and diastolic blood  
 92 pressure (mean of two measurements each), and hypertension diagnosis. In our  
 93 analyses, we also controlled for age, sex, socioeconomic status (Townsend  
 94 deprivation index (27), highest achieved educational qualifications, mean family  
 95 income), smoking status, and ethnic background, the laboratory where COVID-19  
 96 testing was performed, and the origin of the sample used for COVID-19 test (e.g.  
 97 nose, throat etc.). For Sample 2, we also used mortality data provided by the UK  
 98 Biobank – COVID-19-related death was described using the ICD10 identifier U07.1.

99 All variables related to metabolic health and all confounding variables were collected  
100 on average 11 years prior to COVID-19 tests.

101 Prior to the analyses, all numeric variables were z-scored, all serum level values  
102 were log-transformed, and we excluded outliers from the samples (2.2 interquartile  
103 range below 1st or above 3rd quartile). If participants were tested for SARS-CoV-2  
104 more than once, they were considered positive if at least one test result was positive.

#### 105 *Statistical analyses*

106 The same analyses were performed for each of the two population samples. Data  
107 were analysed using R (v. 3.6.0). First, using confirmatory factor analysis in lavaan  
108 (v. 0.6-7), we estimated the fit of a latent variable 'metabolic health', which consisted  
109 of waist circumference, serum C-reactive protein levels, a latent variable  
110 'dyslipidaemia' (serum HDL and TG levels; with loadings constrained to be equal  
111 between the two variables (28)), and two other latent variables, diabetes and  
112 hypertension. The latent variable 'diabetes' consisted of serum glucose and HbA1c  
113 levels, and diabetes diagnosis, while the latent variable 'hypertension' consisted of a  
114 blood pressure (systolic and diastolic blood pressure), and hypertension diagnosis  
115 (Figure 1). The model was estimated using robust maximum likelihood estimation  
116 and model's fit was evaluated using common indices: comparative fit index (CFI),  
117 root mean square error of approximation (RMSEA), and standardized root mean  
118 square residual (SRMR). Acceptable fit was defined as CFI>0.9, RMSEA<0.1, and  
119 SRMR<0.08.

120 Next, we extracted components of the latent variable 'metabolic health' for each  
121 participant and entered them in a logistic regression. The outcome variable in logistic  
122 regression for Sample 1 was COVID-19 test result, while for Sample 2 the outcome  
123 variable was COVID-19-related death.

124 In the analyses we used a set of confounding variables to calculate adjusted odds  
125 ratio for testing positive for COVID-19: age, sex socioeconomic status, smoking  
126 status, ethnic background, test laboratory, and sample origin (6,29–31).

127 Finally, for Sample 2 we explored how individual factors contributed to the COVID-  
128 19-related mortality by using a logistic regression with individual components of  
129 metabolic health, instead of the latent variable 'metabolic health'.

130 Overall, analyses using a latent variables approach allowed us to maximize  
131 information shared between different measured variables within the same metabolic  
132 domains, e.g. serum glucose levels, HbA1C levels and diabetes diagnosis for the  
133 latent variable diabetes. Furthermore, adding continuous measures in this study,  
134 such as glucose levels or blood pressure levels, instead of only using diabetes or  
135 hypertension diagnosis, enabled us to use more information that is available in the  
136 dataset and investigate in depth how continuous metabolic health measures are  
137 related to SARS-CoV-2 infection and COVID-19 mortality rates.

138 A script for the analysis of the data as well as the output of statistical software can be  
139 found at [https://github.com/FilipMorys/COVID\\_MetS](https://github.com/FilipMorys/COVID_MetS) .

140

## 141 **Results**

### 142 *Metabolic health and the risk of COVID-19 infections*

143 In Sample 1, the confirmatory factor analysis provided an acceptable model fit  
144 (CFI=0.932, RMSEA=0.065, SRMR=0.040). In the logistic regression the relation  
145 between metabolic health and the chance of having a positive SARS-CoV-2 test did  
146 not reach our pre-set statistical significance threshold ( $p=0.060$ ; odds ratio 1.10; 95%  
147 confidence intervals (CI): 0.996-1.216).

### 148 *Metabolic health is related to an increased COVID-19-related mortality*

149 Among the individuals who tested positive, 180 people (16%) died from COVID-19,  
150 allowing us to investigate how metabolic health influences COVID-19-related  
151 mortality. Here, the confirmatory factor analysis provided an acceptable model fit  
152 (CFI=0.923, RMSEA=0.071, SRMR=0.049). Logistic regression showed that obesity-  
153 associated metabolic impairment was related to an increased mortality rate among  
154 COVID-19 positive individuals (p=0.0006) – adjusted odds ratio: 1.67 (95% CI: 1.25-  
155 2.23), pointing to a 67% increase for each unit increase on the metabolic health  
156 latent variable (Figure 2). Each unit increase on the metabolic health variable means  
157 increased serum glucose levels by 0.20 mmol/l, glycated haemoglobin A1c levels by  
158 3.26 mmol/mol, C-reactive protein levels by 2.14 mg/l, triglyceride levels by 0.67  
159 mmol/l, systolic blood pressure by 7.16 mmHg, diastolic blood pressure by 4.22  
160 mmHg, waist circumference by 18.74 cm, and decreased HDL cholesterol levels by  
161 0.25 mmol/l.

162 Exploratory analysis with individual components of metabolic health revealed that  
163 higher systolic blood pressure, higher serum glucose, and higher waist  
164 circumference increased the chance of COVID-19-related mortality – the adjusted  
165 odds ratio were 1.30 (95% CI: 1.01-1.68), 1.26 (95% CI: 1.04-1.54), and 1.36 (95%  
166 CI: 1.07-1.74), respectively (systolic blood pressure: p=0.044, glucose levels:  
167 p=0.018, waist circumference: p=0.014; Figure 2).

168

## 169 **Discussion**

170 We investigated whether obesity-associated poor metabolic health, here defined by  
171 increased waist circumference, increased TG levels, decreased HDL levels,  
172 systemic inflammation, increased glucose and HbA1C levels, increased systolic and  
173 diastolic blood pressure, and the presence of diabetes and hypertension, is a risk  
174 factor for COVID-19 infection and mortality. We were able to show that a one unit



175 increase of the latent variable 'metabolic health' results in a 67% higher risk of death  
176 because of COVID-19. In contrast, the relation between metabolic health and the  
177 likelihood of test positivity was weaker, with an odds ratio of only 1.1 and a  
178 confidence interval that included the null effect. In sum, poor metabolic health  
179 contributes little to no risk of test positivity but substantially increases the odds of an  
180 adverse outcome. A strength of our analysis lies in the fact that the risk factor  
181 variables were measured prior to COVID-19 diagnosis and therefore were not  
182 influenced by the disease itself or possible treatment. Another is that we controlled  
183 for known shared risk factors between obesity and COVID-19 outcomes, such as  
184 socioeconomic status, ethnicity, and sex.

185 The results of our study are in line with previous reports linking obesity and individual  
186 components of metabolic health with poor COVID-19 outcomes and death  
187 (1,5,7,10,12,18,32). Bansal et al. review some of the physiological mechanisms that  
188 might mediate the relationship between obesity, related comorbidities and worse  
189 outcomes of COVID-19 (33). These include an enhanced expression of the  
190 angiotensin converting enzyme 2 (ACE2), diabetes-related microvascular  
191 dysfunction, increased expression of pro-inflammatory cytokines, or activation of the  
192 renin-angiotensin-aldosterone system related to hypertension (33–35). Recent  
193 reports especially highlight the role of interleukin-6 (IL-6) in the pathogenesis of  
194 COVID-19, but also the role of IL-6 inhibitors in COVID-19 therapy (36,37). This is  
195 important given that adiposity is associated with chronic systemic inflammation,  
196 which generally delays immune response to pathogens and can also lead to worse  
197 outcomes in COVID-19 patients (35,38–40). In general, our results suggest that a  
198 number of these mechanisms might also contribute to increased mortality rates from  
199 COVID-19.

200 Previous studies investigating COVID-19 in the UK Biobank used positive test results  
201 obtained between March 16<sup>th</sup> and April 26<sup>th</sup> as a proxy of severe COVID-19 (18,41).  
202 The rationale for this is that, during this time, only patients admitted to hospitals and  
203 with COVID-19-like symptoms were tested for SARS\_CoV-2. Here, we decided to  
204 not use this approach for several reasons. First, it is possible that individuals with  
205 COVID-19-like symptoms for which they were admitted to a hospital but who did not  
206 have COVID-19 were only infected after being admitted. In those cases, positive  
207 tests would not reflect COVID-19 severity. Second, it is not possible to determine the  
208 exact reason for which inpatients were tested for SARS-CoV-2; positive test results  
209 might therefore not only reflect severity of COVID-19 disease, but also testing in  
210 anticipation of isolating patients admitted for other reasons. For example, patients  
211 having to undergo unrelated medical procedures might have undergone  
212 precautionary testing. We therefore recommend that studies that used this approach  
213 as a proxy for COVID-19 severity be interpreted with caution.

214 For the interpretation of our and similar results from the UK Biobank, it is important to  
215 note that the UK Biobank is not a sample representative of the entire UK population  
216 and therefore the findings might not be generalizable (42). Infection and mortality  
217 rates calculated here should not be used as an indicator of true prevalence and  
218 mortality rate in the general population. Furthermore, observational studies such as  
219 ours are prone to collider bias, which has already been identified in UK Biobank  
220 COVID-19 investigations (23). Collider bias occurs when the sample population is  
221 conditioned on a variable that correlates with the variables of interest. For example,  
222 during the time period of the current study, it is thought that health workers were  
223 more likely to be tested for SARS-CoV-2, which may have contributed to incorrect  
224 conclusion that cigarette smoking is protective, as health care workers have a lower

225 incidence of smoking (23). Our study population includes individuals who were seen  
226 in a health care setting, who may therefore have a higher incidence of obesity and  
227 poorer metabolic health than the general population. However, it is difficult to see  
228 how this would account for the effect of obesity on death from COVID-19 among  
229 people who tested positive for the virus.

230 In addition, COVID-19 testing in the UK during the time period of this study was  
231 generally restricted to individuals with symptoms such as fever, cough, or loss of  
232 smell or taste – asymptomatic COVID-19 individuals were less likely to be tested.  
233 This might further increase the extent of collider bias in this and similar studies  
234 investigating the predictors of COVID-19 severity or mortality. Current strategies to  
235 account for such bias or measure the extent thereof rely on models and strong  
236 assumptions that might be incorrect. We therefore suggest that our findings be  
237 interpreted with caution. Nonetheless, our model did account for potential collider  
238 variables or confounds such as socioeconomic status, ethnicity and age.

239 Finally, in this study we only used limited data pertaining to COVID-19 diagnosis or  
240 mortality. The seriousness of illness, treatment administered, or actual cause of  
241 death were not investigated here.

242 In sum, we used the UK Biobank dataset to confirm that, in individuals who tested  
243 positive for COVID-19 in the early stages of the pandemic, metabolic health, and  
244 especially visceral adiposity, hypertension, and serum glucose levels, were  
245 associated with an increased risk of death.

246

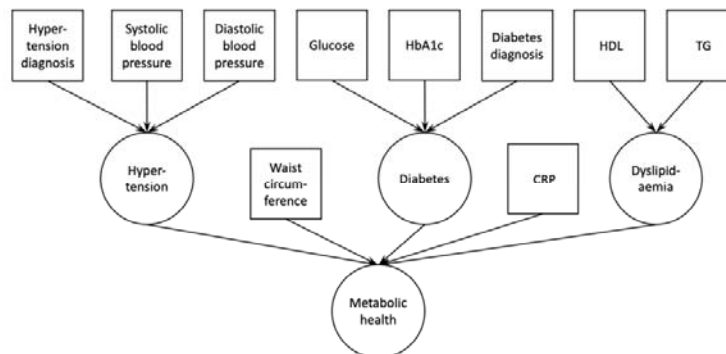
247

248 **Funding**

249 This work was supported by a Foundation Scheme award to AD from the Canadian  
250 Institutes of Health Research. The funders had no role in study design, data  
251 collection and analysis, decision to publish, or preparation of the manuscript.

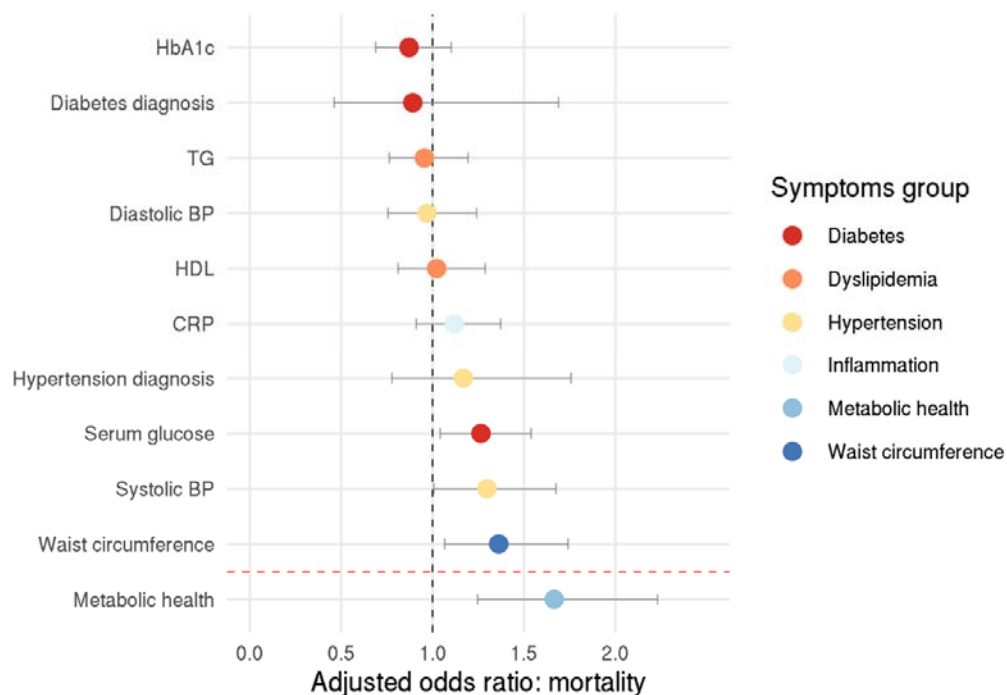
252

253 **Figures**  
254



255  
256

257 Figure 1 Confirmatory factor analysis model used to derive the latent variable  
258 'metabolic health'. Squares indicate measured variables; circles indicate latent  
259 variables. HbA1c – glycated haemoglobin A1c; HDL – high density lipoprotein  
260 cholesterol; TG – triglycerides; CRP – C-reactive protein.



261

262

263 Figure 2 Odds ratio for COVID-19-related death. Circles represent adjusted odds

264 ratios, error bars represent 95% confidence intervals.

265

## 266 **References**

- 267 1. Dietz W, Santos-Burgoa C. Obesity and its Implications for COVID-19  
268 Mortality. *Obesity* (2020) **28**:1005. doi:10.1002/oby.22818
- 269 2. Stefan N, Birkenfeld AL, Schulze MB, Ludwig DS. Obesity and impaired  
270 metabolic health in patients with COVID-19. *Nat Rev Endocrinol* (2020)  
271 **16**:341–342. doi:10.1038/s41574-020-0364-6
- 272 3. Deng L, Zhang J, Wang M, Chen L. Obesity is associated with severe COVID-  
273 19 but not death: a dose-response meta-analysis. *Epidemiol Infect* (2021)1–  
274 27. doi:10.1017/S0950268820003179
- 275 4. Huang Y, Lu Y, Huang YM, Wang M, Ling W, Sui Y, Zhao HL. Obesity in  
276 patients with COVID-19: a systematic review and meta-analysis. *Metabolism*  
277 (2020) **113**:154378. doi:10.1016/j.metabol.2020.154378
- 278 5. Gao F, Zheng KI, Wang XB, Sun QF, Pan KH, Wang TY, Chen YP, Targher G,  
279 Byrne CD, George J, et al. Obesity Is a Risk Factor for Greater COVID-19  
280 Severity. *Diabetes Care* (2020) **43**:E72–E74. doi:10.2337/dc20-0682
- 281 6. Zhu Z, Hasegawa K, Ma B, Fujiogi M, Camargo CA, Liang L. Association of  
282 obesity and its genetic predisposition with the risk of severe COVID-19:  
283 Analysis of population-based cohort data. *Metabolism* (2020) **112**:154345.  
284 doi:10.1016/j.metabol.2020.154345
- 285 7. Zhao X, Gang X, He G, Li Z, Lv Y, Han Q, Wang G. Obesity Increases the  
286 Severity and Mortality of Influenza and COVID-19: A Systematic Review and  
287 Meta-Analysis. *Front Endocrinol (Lausanne)* (2020) **11**:1007.  
288 doi:10.3389/fendo.2020.595109
- 289 8. Martos-Benítez FD, Soler-Morejón CD, García-del Barco D. Chronic  
290 comorbidities and clinical outcomes in patients with and without COVID-19: a

- 291 large population-based study using national administrative healthcare open  
292 data of Mexico. *Intern Emerg Med* (2021)1. doi:10.1007/s11739-020-02597-5
- 293 9. Breland JY, Wong MS, Steers WN, Yuan AH, Haderlein TP, Washington DL.  
294 Body Mass Index and Risk for Severe COVID-19 among Veterans Health  
295 Administration Patients. *Obesity* (2021)oby.23121. doi:10.1002/oby.23121
- 296 10. Jayawardena R, Jeyakumar DT, Misra A, Hills AP, Ranasinghe P. Obesity: A  
297 potential risk factor for infection and mortality in the current COVID-19  
298 epidemic. *Diabetes Metab Syndr Clin Res Rev* (2020) **14**:2199–2203.  
299 doi:10.1016/j.dsx.2020.11.001
- 300 11. Chiappetta S, Sharma AM, Bottino V, Stier C. COVID-19 and the role of  
301 chronic inflammation in patients with obesity. *Int J Obes* (2020) **44**:1790–1792.  
302 doi:10.1038/s41366-020-0597-4
- 303 12. Peña JE de la, Rascón-Pacheco RA, Ascencio-Montiel I de J, González-  
304 Figueroa E, Fernández-Gárate JE, Medina-Gómez OS, Borja-Bustamante P,  
305 Santillán-Oropeza JA, Borja-Aburto VH. Hypertension, Diabetes and Obesity,  
306 Major Risk Factors for Death in Patients With COVID-19 in Mexico. *Arch Med*  
307 *Res* (2020) doi:10.1016/j.arcmed.2020.12.002
- 308 13. Alberti KG, Eckel RH, Grundy SM, Zimmet PZ, Cleeman JI, Donato KA,  
309 Fruchart JC, James WP, Loria CM, Smith Jr SC, et al. Harmonizing the  
310 metabolic syndrome: a joint interim statement of the International Diabetes  
311 Federation Task Force on Epidemiology and Prevention; National Heart, Lung,  
312 and Blood Institute; American Heart Association; World Heart Federation;  
313 International. *Circulation* (2009) **120**:1640–1645.  
314 doi:10.1161/CIRCULATIONAHA.109.192644
- 315 14. Yates T, Razieh C, Zaccardi F, Davies MJ, Khunti K. Obesity and risk of



- 316 COVID-19: analysis of UK biobank. *Prim Care Diabetes* (2020)  
317 doi:10.1016/j.pcd.2020.05.011
- 318 15. de Frel DL, Atsma DE, Pijl H, Seidell JC, Leenen PJM, Dik WA, van Rossum  
319 EFC. The Impact of Obesity and Lifestyle on the Immune System and  
320 Susceptibility to Infections Such as COVID-19. *Front Nutr* (2020) **7**:597600.  
321 doi:10.3389/fnut.2020.597600
- 322 16. Townsend MJ, Kyle TK, Stanford FC. Outcomes of COVID-19: disparities in  
323 obesity and by ethnicity/race. *Int J Obes* (2020) **44**:1807–1809.  
324 doi:10.1038/s41366-020-0635-2
- 325 17. Xie J, Zu Y, Alkhatib A, Pham TT, Gill F, Jang A, Radosta S, Chaaya G, Myers  
326 L, Zifodya JS, et al. Metabolic Syndrome and COVID-19 Mortality Among Adult  
327 Black Patients in New Orleans. *Diabetes Care* (2020)dc201714.  
328 doi:10.2337/dc20-1714
- 329 18. Hamer M, Gale CR, Kivimäki M, Batty GD. Overweight, obesity, and risk of  
330 hospitalization for COVID-19: A community-based cohort study of adults in the  
331 United Kingdom. *Proc Natl Acad Sci* (2020)202011086.  
332 doi:10.1073/pnas.2011086117
- 333 19. Arroyo-Johnson C, Mincey KD. Obesity Epidemiology Worldwide.  
334 *Gastroenterol Clin North Am* (2016) **45**:571–579.  
335 doi:10.1016/j.gtc.2016.07.012
- 336 20. Pigeyre M, Rousseaux J, Trouiller P, Dumont J, Goumidi L, Bonte D, Dumont  
337 MP, Chmielewski A, Duhamel A, Amouyel P, et al. How obesity relates to  
338 socio-economic status: Identification of eating behavior mediators. *Int J Obes*  
339 (2016) **40**:1794–1801. doi:10.1038/ijo.2016.109
- 340 21. Gaibazzi N, Tuttolomondo D, Guidorossi A, Botti A, Tedeschi A, Martini C,

- 341 Mattioli M. Smoking Prevalence is Low in Symptomatic Patients Admitted for  
342 COVID-19. Cold Spring Harbor Laboratory Press (2020).  
343 doi:10.1101/2020.05.05.20092015
- 344 22. Miyara M, Tubach F, POURCHER V, Morelot-Panzini C, Pernet J, Haroche J,  
345 Lebbah S, Morawiec E, Gorochov G, Caumes E, et al. Low rate of daily active  
346 tobacco smoking in patients with symptomatic COVID-19. *Qeios* (2020)  
347 doi:10.32388/wpp19w.4
- 348 23. Griffith GJ, Morris TT, Tudball MJ, Herbert A, Mancano G, Pike L, Sharp GC,  
349 Sterne J, Palmer TM, Davey Smith G, et al. Collider bias undermines our  
350 understanding of COVID-19 disease risk and severity. *Nat Commun* (2020)  
351 **11**:5749. doi:10.1038/s41467-020-19478-2
- 352 24. Sudlow C, Gallacher J, Allen N, Beral V, Burton P, Danesh J, Downey P, Elliott  
353 P, Green J, Landray M, et al. UK Biobank: An Open Access Resource for  
354 Identifying the Causes of a Wide Range of Complex Diseases of Middle and  
355 Old Age. *PLOS Med* (2015) **12**:e1001779. doi:10.1371/journal.pmed.1001779
- 356 25. Armstrong J, Rudkin JK, Allen N, Crook DW, Wilson DJ, Wyllie DH, O'connell  
357 AM. Dynamic linkage of covid-19 test results between public health england's  
358 second generation surveillance system and uk biobank. *Microb Genomics*  
359 (2020) **6**:1–9. doi:10.1099/mgen.0.000397
- 360 26. Elliott P, Peakman TC, UK Biobank. The UK Biobank sample handling and  
361 storage protocol for the collection, processing and archiving of human blood  
362 and urine. *Int J Epidemiol* (2008) **37**:234–44. doi:10.1093/ije/dym276
- 363 27. Townsend P, Phillimore P, Beattie A. *Health and Deprivation: Inequality and*  
364 *the North*. Croom Helm (1988). Available at:  
365 <https://books.google.ca/books?id=K9kOAAAAQAAJ>

- 366 28. Little TD, Lindenberger U, Nesselroade JR. On selecting indicators for  
367 multivariate measurement and modeling with latent variables: When “good”  
368 indicators are bad and “bad” indicators are good. *Psychol Methods* (1999)  
369 **4**:192–211. doi:10.1037/1082-989X.4.2.192
- 370 29. Wu Z, McGoogan JM. Characteristics of and Important Lessons from the  
371 Coronavirus Disease 2019 (COVID-19) Outbreak in China: Summary of a  
372 Report of 72314 Cases from the Chinese Center for Disease Control and  
373 Prevention. *JAMA - J Am Med Assoc* (2020) **323**:1239–1242.  
374 doi:10.1001/jama.2020.2648
- 375 30. Goyal P, Choi JJ, Pinheiro LC, Schenck EJ, Chen R, Jabri A, Satlin MJ,  
376 Champion TR, Nahid M, Ringel JB, et al. Clinical Characteristics of Covid-19 in  
377 New York City. *N Engl J Med* (2020) **382**:2372–2374.  
378 doi:10.1056/nejmc2010419
- 379 31. Petrilli CM, Jones SA, Yang J, Rajagopalan H, O’Donnell L, Chernyak Y, Tobin  
380 KA, Cerfolio RJ, Francois F, Horwitz LI. Factors associated with hospital  
381 admission and critical illness among 5279 people with coronavirus disease  
382 2019 in New York City: Prospective cohort study. *BMJ* (2020) **369**:  
383 doi:10.1136/bmj.m1966
- 384 32. Costa FF, Rosário WR, Ribeiro Farias AC, de Souza RG, Duarte Gondim RS,  
385 Barroso WA. Metabolic syndrome and COVID-19: An update on the  
386 associated comorbidities and proposed therapies. *Diabetes Metab Syndr Clin*  
387 *Res Rev* (2020) **14**:809–814. doi:10.1016/j.dsx.2020.06.016
- 388 33. Bansal R, Gubbi S, Muniyappa R. Metabolic Syndrome and COVID 19:  
389 Endocrine-Immune-Vascular Interactions Shapes Clinical Course.  
390 *Endocrinology* (2020) **161**:1–15. doi:10.1210/endocr/bqaa112

- 391 34. Abu-Farha M, Al-Mulla F, Thanaraj TA, Kavalakatt S, Ali H, Abdul Ghani M,  
392 Abubaker J. Impact of Diabetes in Patients Diagnosed With COVID-19. *Front*  
393 *Immunol* (2020) **11**:3112. doi:10.3389/fimmu.2020.576818
- 394 35. Mohammad S, Aziz R, Al Mahri S, Malik SS, Haji E, Khan AH, Khatlani TS,  
395 Bouchama A. Obesity and COVID-19: what makes obese host so vulnerable?  
396 *Immun Ageing* (2021) **18**:1–10. doi:10.1186/s12979-020-00212-x
- 397 36. Nasonov E, Samsonov M. The role of Interleukin 6 inhibitors in therapy of  
398 severe COVID-19. *Biomed Pharmacother* (2020) **131**:110698.  
399 doi:10.1016/j.biopha.2020.110698
- 400 37. Sinha P, Mostaghim A, Bielick CG, McLaughlin A, Hamer DH, Wetzler LM,  
401 Bhadelia N, Fagan MA, Linas BP, Assoumou SA, et al. Early administration of  
402 interleukin-6 inhibitors for patients with severe COVID-19 disease is  
403 associated with decreased intubation, reduced mortality, and increased  
404 discharge. *Int J Infect Dis* (2020) **99**:28–33. doi:10.1016/j.ijid.2020.07.023
- 405 38. Costa FF, Rosário WR, Ribeiro Farias AC, de Souza RG, Duarte Gondim RS,  
406 Barroso WA. Metabolic syndrome and COVID-19: An update on the  
407 associated comorbidities and proposed therapies. *Diabetes Metab Syndr Clin*  
408 *Res Rev* (2020) **14**:809–814. doi:10.1016/j.dsx.2020.06.016
- 409 39. Morys F, Dadar M, Dagher A. Obesity impairs cognitive function via metabolic  
410 syndrome and cerebrovascular disease: an SEM analysis in 15,000 adults  
411 from the UK Biobank. *bioRxiv* (2020)2020.06.26.174086.  
412 doi:10.1101/2020.06.26.174086
- 413 40. Bansal R, Gubbi S, Muniyappa R. Metabolic Syndrome and COVID 19:  
414 Endocrine-Immune-Vascular Interactions Shapes Clinical Course.  
415 *Endocrinology* (2020) **161**:1–15. doi:10.1210/endocr/bqaa112

- 416 41. Kuo C-L, Pilling LC, Atkins JL, Masoli JAH, Delgado J, Kuchel GA, Melzer D.  
417 APOE e4 Genotype Predicts Severe COVID-19 in the UK Biobank Community  
418 Cohort. *Journals Gerontol Ser A* (2020) **XX**:1–2. doi:10.1093/gerona/glaa131
- 419 42. Fry A, Littlejohns TJ, Sudlow C, Doherty N, Adamska L, Sprosen T, Collins R,  
420 Allen NE. Comparison of Sociodemographic and Health-Related  
421 Characteristics of UK Biobank Participants with Those of the General  
422 Population. *Am J Epidemiol* (2017) **186**:1026–1034. doi:10.1093/aje/kwx246
- 423