

1
2
3
4
5
6
7
8
9
10
11
12
13
14
15

An Evaluation of the 2035 WHO End TB Targets in 40 High Burden Countries

Jaeyoon Cha¹, Guy E. Thwaites^{2, 3}, Philip M. Ashton^{2, 3 *}

¹Department of Molecular Biology, Princeton University, Princeton, New Jersey, USA

²Oxford University Clinical Research Unit, Ho Chi Minh City, Vietnam

³Centre for Tropical Medicine and Global Health, Nuffield Department of Medicine, University of Oxford, Oxford, UK

* to whom correspondence should be addressed

16 Abstract

17 Tuberculosis (TB) is the leading global cause of death from a single infectious agent, with more than 10
18 million new cases annually. As a part of its efforts to control TB, the World Health Organisation (WHO)
19 adopted the End TB Strategy in 2014 to reduce TB incidence by 90% between 2015 and 2035, with
20 intermediate targets every five years.

21

22 We examined TB incidence data from 2000 to 2018 for 40 high burden countries (HBCs) from the WHO
23 published statistics, contextualized and assessed their trends over time, and projected the incidence to
24 2035 for each country. Two recurrent patterns accounted for 26 of the 40 HBCs: linear decrease ($n = 14$)
25 or a peak in the 2000s followed by decline ($n = 12$). As uncontrolled HIV is the greatest risk factor for TB,
26 trends in HIV infected and uninfected people were analysed separately for 15 Sub-Saharan African HBCs
27 with high HIV prevalence.

28

29 The projections of current trends were compared against the reductions required to meet the WHO End
30 TB targets. Of the 25 countries without a high burden of TB, only 5 are on track to meet the End TB targets:
31 Ethiopia, Laos, Myanmar, Russia, and South Korea. Of the 15 high HIV burden countries, 6 are on track
32 to meet the End TB targets: Eswatini, Kenya, Lesotho, South Africa, Tanzania, and Zimbabwe.

33

34 Overall, we predict 62 million excess cases of TB between 2020 and 2035 in the 29 HBCs projected to
35 miss the WHO End TB targets. In high HIV burden countries, new programs aimed directly at TB will be
36 required to maintain momentum. Moreover, our projections are based on data prior to the COVID-19
37 pandemic; the disruption of the pandemic is overwhelmingly likely to interrupt vital TB services and
38 increase TB incidence. We anticipate that these findings will help orientate countries to their progress
39 towards the End TB goals and inform the level of investment required to meet these important targets for
40 a TB-free world.

41

42 Introduction

43 *Mycobacterium tuberculosis*, the causative agent of tuberculosis (TB), claims more lives than any other
44 infectious organism. In 2018 alone, there were 1.4 million deaths and 10.0 million new cases of TB
45 worldwide, with the 30 highest burden countries (HBCs) bearing 87% of the incidence.¹ Twenty-five of the
46 30 countries are classified as low or lower-middle income by the World Bank.

47
48 With HIV/AIDS,^{2,3} smoking,⁴ diabetes mellitus,⁵ malnutrition,^{5,6} and air pollution⁷ among the risk factors,
49 TB is a global health concern of many faces.¹ Particularly, HIV-positive individuals are 20 to 30 times more
50 likely to develop active TB infection.^{2,3} In Sub-Saharan Africa, where the prevalence of HIV/AIDS is the
51 highest globally, up to 70% of TB patients are estimated to be coinfecting with HIV.³ As coinfection is known
52 to increase mortality, TB is an especially pressing epidemic in this region. The burden of TB further extends
53 beyond mortality to severe productivity and treatment costs that exacerbate the difficult economic climates
54 in many HBCs. In 2018, TB cost the global economy \$1 billion US dollars in missed workdays from
55 sickness, \$11 billion from an average loss of 15-years' income from TB deaths, and \$9.2 billion for
56 treatment.⁸

57
58 To support its vision of a world free of TB, the World Health Organisation (WHO) developed the End TB
59 Strategy, which includes ambitious targets and milestones for 2020, 2025, 2030 and 2035, and a high-
60 level strategy to achieve them. The targets include: 95% reduction in TB deaths between 2015 and 2035,
61 90% reduction in TB incidence in the same time span, and no families facing catastrophic costs as a result
62 of TB.⁹ Accurate assessment of TB incidence is thus a prerequisite and critical part of the End TB Strategy.
63 The WHO estimations of incidence for each country is tailored according to the information available, which
64 depends on the strength of the country's public health system and surveillance measures. While accurately
65 assessing TB incidence in high burden countries without strong public health systems is challenging, it is
66 reassuring that a study from the Global Burden of Disease consortium, using different methods than the
67 WHO, found a similar overall TB incidence in 2015 at 10.2 million cases compared to the WHO's 10.4
68 million.^{10,11}

69
70 By the WHO's own reckoning, "[of] the world as a whole, most WHO regions and many high TB burden
71 countries are not on track to meet the 2020 milestones of the End TB Strategy".¹ Between 2015 and 2018,
72 there was a cumulative reduction in global incidence by 6.3%, far short of the 20% milestone set by the
73 End TB Strategy for 2020.¹ The WHO's Global Tuberculosis Report 2019 estimates that only 11 of the 30
74 HBCs are on track to meet the 2020 milestone for incidence: Cambodia, Ethiopia, Kenya, Lesotho,
75 Myanmar, Namibia, Russia, South Africa, Tanzania, Zambia, and Zimbabwe.¹ Other studies have
76 assessed this first milestone with grim results. A CDC report concluded that only the Europe region, which

77 includes no countries on the HBC list, is likely to meet the 2020 incidence target.¹² Another study by Pan
78 et al. predicts that only 2 regions out of 21 (Sub-Saharan Africa and Eastern Europe) and a mere 11
79 countries of the 195 analysed are on track to meet the 20% decrease in incidence; of these, 2 countries,
80 South Africa and Russia, are evaluated in this present study.¹³

81

82 This study aims to characterise the current trends in TB incidence in HBCs and place them into the context
83 of the incidence End TB milestones and targets through 2035. Our projections extend beyond the WHO's
84 analyses and previously published reports, which currently only project to 2020, and provide detailed
85 country-level breakdowns and analysis. We believe that this longer-term view, while subject to
86 considerable uncertainty, will enable stakeholders of HBCs to more effectively advocate for the resources
87 necessary to meet these targets.

88

89

90

91 Methods

92 Data gathering

93 Countries were selected for analysis based on the WHO list of HBCs for TB in the post-2015 era: 14
94 countries identified for TB, MDR-TB, and TB/HIV; 8 countries for TB and TB/HIV only; 6 countries for TB
95 and MDR-TB only; 2 countries for overall TB only; and 8 countries for TB/HIV only (full list available in
96 Table 1).¹ In addition to these 38 countries from the WHO list, Laos and South Korea were included.
97 Laos is an immediate neighbour of Vietnam where we are based, and South Korea is a notable example
98 of a high income country with a high burden of TB that may serve as a model for rapidly developing
99 countries.

100

101 TB incidence data were obtained directly from the open-access WHO database
102 (<http://www.who.int/tb/country/data/download/en/>). We have also included the data tables in the GitHub
103 repository that hosts the code for this analysis (<https://github.com/chaj1230/endTB>). The variables
104 “e_inc_100k”, “e_inc_100k_hi”, and “e_inc_100k_lo”, which represent the estimated incidence of all
105 forms of TB per 100,000 people, its high-bound, and its low-bound, respectively, were extracted by
106 country for the years 2000 to 2018. Population data by country were obtained from the World Bank Open
107 Data, which includes both the reported estimates as well as World Bank projections to 2035
108 (<https://data.worldbank.org/>).

109

110 Data for country-specific HIV analyses from years 2000 to 2018 were accessed from both the WHO and
111 the World Bank Open Data. The estimated incidence of TB/HIV coinfection per 100,000 people
112 (“e_inc_tbhiv_100k”) was extracted from the WHO dataset. Total adult prevalence of HIV (% of
113 population ages 15-49) and anti-retroviral (ARV) therapy coverage (% of people living with HIV) were
114 obtained from the World Bank (<https://data.worldbank.org/>).

115

116 The current World Bank classifications were followed to categorise countries as low income, lower
117 middle income, upper middle income, or high income.¹⁴

118

119 Fitting linear models to the WHO data

120 All computational analyses were performed using R software (version 3.5.2). Scripts used to analyse and
121 generate plots can be found on Github at <https://github.com/chaj1230/endTB>. The reported TB incidence
122 from 2000 to 2018 for each country (“e_inc_100k”) was visualized using the ggplot2 package. The high
123 and low bounds of the incidence, “e_inc_100k_hi” and “e_inc_100k_lo,” respectively, served as the

124 confidence interval (CI). All trend lines and linear models fit to the entire time frame can be seen in
125 Supplementary Figure 6.

126

127 We fit a linear trend to the incidence data for each of the 40 countries in our study using the lm function.
128 We found that 5 HBCs had no change in incidence values at all, which we interpreted as the WHO
129 treating further reports from these countries as unreliable data. We examined 21 HBCs with an $R^2 < 0.95$
130 in more detail. Some countries displayed a linear trend in TB incidence for a more recent part of the time
131 series; a linear model was thus fitted to this sub-section. We identified pivotal TB control efforts since
132 2000 and their implementation years with literature searches and considered these when selecting the
133 years of TB incidence data to include in the linear model.

134

135 Projection of the 2020-2035 estimates and confidence intervals

136 Incidence estimates for 2020-2035 were inferred for each HBC using the “predict” function in R and the
137 model for that country. Additionally, for high HIV burden countries in Sub-Saharan Africa, the trends in
138 TB/HIV incidence and non-HIV TB incidence were modelled separately and combined to give an overall
139 estimate. The CI ranges for future projections were calculated by taking the average ratio of the high or
140 low CI to the estimated incidence over the 2014 to 2018 period of the WHO data. This average ratio was
141 then used to project the CI forward alongside the projected estimates through 2035 for each country. The
142 minimum value for projected and target incidence was set to 10 per 100,000 people, the threshold for the
143 WHO definition of “low incidence” of TB.¹⁵

144

145 The reported TB incidence values from 2000 to 2018 and the predicted trends from 2019 to 2035 using
146 the modified linear model, along with the CI, were graphed for each country, grouped by trend.

147

148 Comparison of the projected incidence to the End TB target incidence

149 For each country, the End TB target incidence was modelled by multiplying the 2015 reported incidence
150 by 0.8 for 2020, 0.5 for 2025, 0.2 for 2030 and 0.1 for 2035. These milestones were used to precisely fit
151 a polynomial regression of the 5th degree using the glm function in R, from which target values for each
152 year were interpolated. These targets were then compared against the predicted TB incidence values,
153 and the net difference between the two from 2020 through 2035 was calculated. A country was
154 concluded to miss the End TB target if the lower CI of its projected number of cases exceeded its target
155 number of cases in 2035.

156

157 The absolute numbers of TB cases for both the projected and End TB target scenarios were calculated
158 for the years 2020 to 2035 by multiplying the projected or target incidence per 100,000 people by the
159 World Bank projected population size divided by 100,000.

160

161 Analysis of HIV related trends

162 As untreated HIV is a known risk factor for developing TB, access to HIV antiretroviral (ARV) treatment
163 and TB by HIV status were further analysed in a smaller cohort of 15 high HIV/AIDS burden countries in
164 Sub-Saharan Africa. These countries included: Angola, Botswana, Cameroon, Congo, Eswatini, Kenya,
165 Lesotho, Malawi, Namibia, Sierra Leone, South Africa, Uganda, Tanzania, Zambia, and Zimbabwe.

166

167 To examine whether the peak in the 2000s followed by a decline in TB incidence correlated to the trajectory
168 of access to ARV therapy for HIV, the prevalence of uncontrolled HIV was calculated from ARV therapy
169 coverage (% of people living with HIV) data and graphed against the total adult prevalence of HIV (% of
170 population ages 15-49) for years 2000 to 2018.

171

172 TB incidence values parsed by HIV status were evaluated with “e_inc_tbhiv_100k,” “e_inc_tbhiv_100k_hi,”
173 and “e_inc_tbhiv_100k_lo” data, which represent TB/HIV incidence and its confidence interval as
174 estimated by the WHO. These were subtracted from their respective overall TB incidence data
175 (“e_inc_100k,” “e_inc_100k_hi,” and “e_inc_100k_lo”) to calculate TB incidence in HIV uninfected people.
176 Confidence intervals, projections, calculations of the numbers of projected cases, and comparisons against
177 End TB goals were conducted as explained with the overall TB incidence data, resulting in three separate
178 analyses: overall TB, TB in HIV-infected people (TB/HIV), and TB in HIV-uninfected people. Countries that
179 had been projected to be on track to meet targets for overall TB, but failed to meet targets in either of these
180 two sub-analyses by HIV status, were concluded to miss End TB targets. As TB in people without HIV
181 infections was not directly reported by WHO, and we calculated it by subtracting the incidence in people
182 with HIV from the total, there were no confidence intervals available for this estimate, or for the projection.

183 Results & Discussion

184 Trends in TB incidence in high burden countries

185 The reported TB incidence of 14 of the 40 analysed HBCs was well-described by a linear model ($R^2 > 0.95$)
186 with a negative slope (Table 1). This reflects a remarkably steady decline in TB incidence in these
187 countries: Botswana, Cambodia, Cameroon, Chad, China, Ethiopia, Ghana, India, Indonesia, Laos,
188 Thailand, Vietnam, Zambia, and Zimbabwe (Figure 1). While the consistency of decline was similar among
189 these countries, the rates of decrease (in incidence per 100,000) varied between $-0.57 * year$ in Chad
190 and $-37.25 * year$ in Zimbabwe (full results in Table 1). This wide range is likely driven by the varying
191 epidemiology of TB in these countries (HIV associated or not), as well as the overall stage of TB control,
192 with faster absolute decreases being achieved in countries with higher incidence.

193
194 There were 12 HBCs characterised by a distinctive TB incidence trend of a peak during the 2000s (Figure
195 2). All countries are Sub-Saharan African with a high prevalence of HIV: Angola, Cameroon, Congo,
196 Eswatini, Kenya, Lesotho, Malawi, Namibia, Sierra Leone, South Africa, Tanzania and Zimbabwe. The HIV
197 prevalence in these countries ranges from 1.5% in Namibia to 23.6% in Kenya (average = 11.7%). As
198 uncontrolled HIV/AIDS is a well-established risk factor for TB, the HIV treatment coverage in these
199 countries for the period 2000 to 2018 was examined (Supplementary Figure 3). This revealed that 7 of
200 these countries (Angola, Cameroon, Eswatini, Lesotho, Namibia, Sierra Leone, and South Africa) had also
201 experienced a peak in the prevalence of uncontrolled HIV in the 2000s, while 5 of the countries (Congo,
202 Kenya, Uganda, Tanzania, and Zimbabwe) have had steady declines in uncontrolled HIV since 2000. The
203 incidence of TB/HIV coinfection revealed that declines in TB incidence in 8 countries (Eswatini, Kenya,
204 Lesotho, Malawi, Namibia, South Africa, Tanzania, and Zimbabwe) were primarily driven by corresponding
205 declines in the incidence of TB in people infected with HIV, while HIV-uninfected TB incidence decreased
206 relatively slowly (Figure 5 & 6).

207
208 Despite the global decrease in TB incidence,¹ 4 HBCs (Angola, Guinea-Bissau, Liberia and Mozambique),
209 had overall trends of increasing TB incidence between 2000 and 2018 (Table 1 & Supplementary Figure
210 1). There was a trend of decreasing incidence in Angola from 2009, but not enough to compensate for the
211 rapid increase between 2000 and 2009. For Guinea-Bissau, Liberia, and Mozambique, the increases were
212 approximately linear until 2005, 2013, and 2012 respectively, after which the numbers became fixed. This
213 suggests that data quality deteriorated at this time, leading the WHO to assume constant TB incidence
214 onwards.¹⁶ While a definite cause cannot be determined for this unexpected trend of increasing incidence,
215 one possibility is that Angola, Liberia, and Mozambique have experienced civil wars until 2002, 2003, and
216 1992, respectively, with ongoing conflict pervasive in these regions. The poor data quality from 3 of these

217 4 countries, recently too low to even be included, and the wide CIs associated with previous estimates
218 indicate that interpretations of incidence from these countries warrant caution.

219

220 Bangladesh, the Central African Republic, Nigeria, North Korea and Papua New Guinea reported the same
221 TB incidence from 2000 to 2018 (Supplementary Figure 2). One explanation for this, suggested by the
222 2009 WHO report on TB surveillance, is an assumption that incidence is constant in the absence of
223 sufficient data collected by a country.¹⁶ Thus, the lack of change in estimated TB incidence indicates the
224 lack of effective and/or consistent reporting in these 5 HBCs from 2000 to 2018. For instance, Bangladesh
225 has had considerable changes in case finding efforts leading to fluctuations in notification rates, and thus
226 its TB incidence has been assumed to be flat until more data becomes available.¹⁶ The lack of sufficient
227 surveillance to infer incidence in these countries is worrying, considering that they have a combined
228 population of nearly 400 million people and include two of the most densely populated mega-cities in the
229 world, Dhaka and Lagos.

230

231 An examination of the 8 HBCs for which the trends have not already been discussed (Supplementary
232 Figure 4) reveals that an individualized approach, with consideration of the health systems, national
233 policies for TB control, war and conflict, HIV prevalence, and reporting methods, among other factors, is
234 necessary to situate and better understand the trends in these countries. As there are broad CIs associated
235 with estimates from some of these countries, the figure was also generated without the CI to enable clearer
236 viewing of the estimated incidence (Supplementary Figure 5). The Philippines exhibited a singular V-
237 shaped curve of TB incidence with a linear decrease until the year 2008, followed by a slower, linear
238 increase, and then 3 years of no reported change. The Philippines dramatically improved its TB
239 surveillance system in 2008, which may account for this reported increase in TB cases,¹⁷ but the
240 subsequent lack of change from 2016 to 2018 indicates that the WHO deemed reporting too unreliable to
241 modify the estimated incidence. This further highlights the disconnect between the reported and actual TB
242 incidence in lower income countries without adequate reporting systems. The Democratic Republic of the
243 Congo (DRC), Myanmar, and Pakistan all had stable or unchanged incidence until 2013, 2010, and 2013
244 respectively, followed by either dramatic (Myanmar) or modest (DRC and Pakistan) declines. Myanmar
245 was internationally isolated until 2011 following a landmark general election in 2010,¹⁸ and the subsequent
246 changes in TB incidence may be due to changes in the reporting or management of cases in the country.
247 The DRC is characterised by chronic political instability and is one of the least developed countries in the
248 world, which is reflected in its modest decline in TB incidence between 2013 and 2018. Reported numbers
249 from Pakistan likely suffer from inadequate surveillance and may be far from capturing the true incidence
250 of TB. The number of notified TB cases increased significantly from 34,066 in 2001 to 248,115 in 2008,¹⁹
251 yet no evident change is indicated in the WHO TB incidence data. Russia experienced growing TB
252 incidence between 2005 and 2008, likely reflecting increased problems with MDR-TB in the country.²⁰

253 Uganda has seen its rate of decline in TB incidence slow between 2000 and 2018, partly due to increasing
254 incidence of TB in HIV uninfected people (Supplementary Figure 3 & Figure 6).

255

256 The trend of TB incidence in South Korea was particularly noteworthy. Although South Korea is not on the
257 WHO high burden list globally, it has the highest incidence of TB among the 36 OECD (Organisation for
258 Economic Co-operation and Development) countries.²¹ Korea's remarkable economic growth in recent
259 decades and robust national TB control efforts have been noted as instrumental to its management of TB
260 from a prevalence (per 100,000 people) of 5,168 in 1965 to 767 in 1995 to 77 in 2016.^{21,22} The sustained
261 decrease in TB incidence from 2011 onwards reflects the almost immediate effectiveness of new strategies
262 implemented by the Korean government to combat TB. These include the 2011 implementation of the
263 "New 2020 Plan for Early TB Elimination" with targeted governmental efforts on early detection, heightened
264 intensive care efforts, and a dramatic three-fold increase in the budget for TB control. Many initiatives have
265 followed throughout the decade, including the Five Year Plan for TB Elimination (2013-2017), the TB-free
266 Korea programme (2016), and intensified screenings and expansion of insurance to cover all medical
267 expenses for TB, even the living costs for families of MDR-TB patients.^{21,22} South Korea has had
268 unprecedented economic growth in a short time span, government-mandated universal health care, and
269 substantial efforts by the state to control TB.²¹⁻²³ In this regard, South Korea has the potential to be adopted
270 as a model for the trajectories of high TB burden countries currently undergoing rapid economic growth.

271

272 Twenty of the 40 countries displayed partial, rather than continuous, linear decreases in incidence starting
273 from a year subsequent to 2000. We projected the recent linear trends of these countries, defined
274 empirically on a case by case basis for each country (Table 1).

275 Which countries are on track to meet the WHO End TB targets?

276 Next, we compared the TB incidence trends in these 40 HBCs to the decreases necessary to meet the
277 WHO End TB target of a 90% reduction in incidence between 2015 and 2035. Because of the dramatic
278 impact of HIV on the epidemiology of TB, we analysed 15 high HIV burden countries from Sub-Saharan
279 Africa separately. For these 15 countries, TB incidence rates in HIV infected and uninfected people were
280 modelled individually to account for different trends in the two populations.

281

282 Of the 25 countries without a high burden of HIV, only 5 were on track to meet the End TB targets (Table
283 2, Figure 3): Ethiopia, Laos, Myanmar, Russia and South Korea. These countries are projected to have a
284 combined 972,000 fewer cases than the End TB targets from 2020 to 2035, with individual countries
285 ranging from 4,303 (Laos) to 760,545 (Ethiopia) cases. As for the reasons underlying this success, in the
286 case of Ethiopia, it is notable that Dr. Tedros Adhanom was a much-lauded Minister of Health from 2005
287 to 2012, with impressive performance across a range of health indicators.²⁴ Laos also has had a strong

288 record of TB control. It met the TB related Millennium Development Goal and the Stop TB target of
289 halving the prevalence of TB between 1990 and 2015, partly driven by the availabilities of Directly
290 Observed Therapy Short-course (DOTS) treatments in 95% of its health centres and anti-TB medication
291 at no cost.²⁵ The steps South Korea has taken to control its TB incidence have been detailed above and
292 similarly entail interventions that increase both the quantity and quality of TB treatment.

293

294 The remaining 20 low HIV burden countries are projected to miss the targets (Table 2, Figure 4) with a
295 combined excess of 58.5 million cases of TB. More than half of these excess cases are accounted for by
296 only 3 countries: India, Indonesia and the Philippines. Progress toward reducing TB incidence in these
297 countries has been hampered by decentralised health systems, public-private mixed models of health
298 service leading to patients lost along the diagnosis-treatment pathway, and poor surveillance reflected in
299 large confidence intervals or unchanging incidence values in the WHO statistics. Four countries (Brazil,
300 Cambodia, China, and Thailand) will come close to meeting the targets, but the End TB goal in 2035 is
301 not within the lower bound of their projected incidence (Table 2). Despite narrowly missing the targets,
302 Brazil is projected to achieve effective elimination by 2035 (incidence of 10 cases per 100,000 people),
303 and China will have only 13 cases per 100,000 people, which would still represent a major global health
304 achievement. Progress toward effective elimination of TB in Brazil may have been bolstered by the
305 provision of universal free TB care and a range of other social programmes to improve health.²⁶ China
306 has made steady improvements in a variety of health indicators, and DOTS coverage of the population
307 reached 100% in 2005.²⁷

308

309 Of the 15 countries with high HIV burdens, 6 are on track to meet the End TB targets (Table 3, Figure 5):
310 Eswatini, Kenya, Lesotho, South Africa, Tanzania, and Zimbabwe. These 6 countries will go beyond the
311 reductions required to meet the End TB targets by a combined total of 2 million cases averted, varying
312 between 22,596 (Eswatini) and 1.4 million (South Africa) cases. The large number of cases averted in
313 Sub-Saharan Africa, and particularly in South Africa, is consistent with an existing evaluation of End TB
314 milestone for 2020.¹³ The downwards step change in South Africa's TB incidence in 2016 suggests a
315 change in reporting methodology at this time that contributed towards the number of cases averted
316 against the 2015 benchmark. All 6 of these countries except Tanzania are on track to achieve effective
317 elimination of TB in both HIV infected and uninfected people by 2035. Ensuring continuation of these
318 great gains will require focused socio-political and economic commitments. A particularly striking
319 example of success is Eswatini, which declared a national TB emergency in 2011, tripled the number of
320 diagnostic sites, increased TB management units, and instituted active case finding.²⁸ The effectiveness
321 of this response is clearly reflected in Eswatini's trajectory.

322

323 There are 9 high HIV burden countries currently projected to miss the End TB targets (Table 3, Figure 6).
324 In an initial analysis of the overall trend (i.e. without separating HIV infected and HIV uninfected), 3 of
325 these countries (Botswana, Namibia and Zambia) had been projected to be on track to meet the End TB
326 targets. This speaks to the slower control of TB in HIV uninfected individuals in these countries
327 compared to great progress in the TB/HIV syndemic. Of particular note is Botswana, where 10,290 *fewer*
328 cases of TB are projected compared to End TB targets overall. This counterintuitive result is likely
329 because Botswana is projected to dramatically exceed the End TB targets until TB in HIV infected people
330 is effectively eliminated in 2021, after which progress toward targets will slow dramatically. Sierra Leone
331 is the only country to display a trend of increasing incidence of TB in HIV infected people, while the
332 Congo and Uganda both show decreases in overall TB and TB/HIV but an increase in the incidence of
333 TB in HIV uninfected people. Greater national and international focus on the TB programmes in these
334 countries is required to ensure that these alarming trends are reversed, especially as they have thus far
335 been hidden within the values of overall incidence.

336

337 Of the 30 HBCs on the WHO list, the 2019 WHO TB report estimated that 11 are on track to meet the
338 2020 milestone of a 20% reduction in incidence: Cambodia, Ethiopia, Kenya, Lesotho, Myanmar,
339 Namibia, Russia, South Africa, Tanzania, Zambia and Zimbabwe.¹ Of these 11, our projections show 8
340 are on track to continue and meet the targets through 2035, with Namibia and Zambia both projected to
341 miss the targets when HIV infected and uninfected TB incidences are modelled separately. Cambodia,
342 the third discrepancy, is projected to come close to the End TB targets with only 113,000 excess cases
343 between 2020 and 2035.

344

345 One weakness of this study is the underlying assumption of a linear trend to TB incidence. On balance,
346 we believe this is a reasonable assumption given that 14 countries had an $R^2 > 0.95$ when their
347 incidence data from 2000 to 2018 were fit to a linear model. However, it still remains a simplification,
348 especially for countries for which only a subset of the time series was used to fit the linear model. In
349 addition, while we took projected changes in population sizes into account when calculating the absolute
350 number of projected cases, changes in risk factors such as smoking, diabetes mellitus, malnutrition,
351 poverty, poor air quality, and age profiles of the population were not used to directly model the projected
352 TB incidence. Nevertheless, HIV, the most significant risk factor and comorbidity, was evaluated. Another
353 limitation is that as MDR-TB has different epidemiological trends to non-MDR-TB, countries on the WHO
354 list for MDR-TB,¹ but not overall TB, were excluded. Similar analyses may be of interest for these 10
355 countries (Azerbaijan, Belarus, Kazakhstan, Kyrgyzstan, Peru, Moldova, Somalia, Tajikistan, Ukraine,
356 and Uzbekistan) to determine their progress towards the WHO End TB targets by 2035. As noted above,
357 there are numerous countries with low quality data indicating that the current incidence estimates do not
358 reflect the reality of TB incidence in the population. These countries have still been included in our

359 analyses, as to exclude them may falsely suggest that there is no problem with TB in those countries.
360 While they detract from the accuracy of our projected estimates, they do not change the overall
361 message, either per country or globally.

362

363 The trajectory of TB in the wake of COVID-19

364 While novel and emerging viruses have the potential to wreak death and disruption across the globe, the
365 number of COVID-19 deaths as of writing has yet to reach the average number of lives lost to TB every
366 year. The global incidence of TB has been decreasing since 2000, with an average decline of 1.6% per
367 year from 2000 to 2018.¹ As revealed by our analysis, Sub-Saharan African countries, many with HIV as
368 a major driver of TB, have achieved some of the largest percentage reductions in TB incidence.
369 However, these gains in TB control are threatened by the spread of SARS-CoV-2 in the ongoing
370 pandemic.

371

372 COVID-19 poses both direct and indirect consequences for TB control. Recent literature indicates an
373 association between pre-existing TB with increased susceptibility to and severity of COVID-19.²⁹⁻³¹ One
374 clinical study suggests that comorbidity with TB manifests atypical radiological features in individuals
375 diagnosed with COVID-19.³² Although a clear causal relationship between the two is debated,³³ the
376 similarities in their initial physiological symptoms and shared risk factors (including poverty,
377 overcrowding, and air pollution) mean that *M. tuberculosis* and SARS-CoV-2 are two intertwined
378 infectious agents whose coinfection likely leads to worse prognosis than either one alone.^{29-31,33}

379

380 Indirectly, the ongoing pandemic redirects resources and attention away from TB, as well as from HIV
381 and malaria. Restrictions in international commerce that limit access to necessary medications, shifts in
382 manufacturing of TB diagnostic tests to COVID-19 tests, and reallocation of financial and human
383 resources towards COVID-19 are only a few of many concerns for the future of TB control. A June 2020
384 survey by the Global Fund, which provides 69% of all international financing for TB, found that 78% of TB
385 and 85% of HIV programmes face disruptions in care delivery due to COVID-19.³⁵ The similarity of initial
386 symptoms between COVID-19 and TB further exacerbates the situation, fuelling stigmatisation and
387 reluctance of health workers to deliver comprehensive treatment.

388

389 Modelling studies carried out since COVID-19 emerged predict a regression of global TB control,
390 including significant increases in TB mortality, ranging from 13% in 2020 to 20% through 2025.^{36,37} One
391 study from the Stop TB Partnership and USAID (United States Agency for International Development)
392 predicts 6.3 million excess TB cases globally between 2020 and 2025 from COVID-19, assuming a 3-
393 month lockdown and a 10-month recovery, as an *underestimate*.³⁸ With an end to the pandemic

394 uncertain, decades-long gains in TB control may be reversed as a repercussion of the pandemic unless
395 strong corrective actions are taken.

396 Conclusions

397 Our projections reveal that 29 of the 40 analysed countries will not meet the WHO End TB targets if
398 current trends continue, with an excess of 61,792,010 cases in these countries between 2020 and 2035
399 compared to if the targets were met. Seven of the 11 countries projected to meet targets are in Sub-
400 Saharan Africa. Three high HIV burden countries that had appeared on track to meeting targets when
401 only overall incidence was projected were revealed to miss targets when TB incidence in HIV uninfected
402 people were modelled separately. This reveals that as the number of people with uncontrolled HIV
403 diminishes, the rate of decrease in TB incidence is likely to slow. The ongoing COVID-19 pandemic is
404 also expected to disrupt the projected trajectories of TB incidence. Therefore, our prediction that 11 of
405 the 40 countries analysed will meet the End TB targets may still be a significant overestimate, and more
406 directed programmes for TB control should be concentrated in these regions with consideration for
407 country-specific contexts and successful measures in peer countries.

408
409
410
411

412 Acknowledgements

413 We would like to acknowledge Hannah Clapham for helpful discussions and Duy Nguyen Manh for
414 assistance with R code.

415
416
417
418
419
420

421 References

422

- 423 1 WHO. Global tuberculosis report 2019. Geneva, Switzerland: World Health Organization, 2019.
- 424 2 Kwan CK, Ernst JD. HIV and Tuberculosis: A Deadly Human Syndemic. *Clin Microbiol Rev* 2011;
425 **24**: 351–76. DOI:10.1128/CMR.00042-10.
- 426 3 Tesfaye B, Alebel A, Gebrie A, Zegeye A, Tesema C, Kassie B. The twin epidemics: Prevalence
427 of TB/HIV co-infection and its associated factors in Ethiopia; A systematic review and meta-
428 analysis. *PLoS ONE* 2018; **13**. DOI:10.1371/journal.pone.0203986.
- 429 4 Maurya V, Vijayan V. K, Shah A. Smoking and tuberculosis: an association overlooked. *Int J*
430 *Tuberc Lung Dis* 2002; **6**: 942–51. PMID:12475139.
- 431 5 Dooley KE, Chaisson RE. Tuberculosis and diabetes mellitus: convergence of two epidemics.
432 *Lancet Infect Dis* 2009; **9**: 737–46. DOI:10.1016/S1473-3099(09)70282-8.
- 433 6 Gupta KB, Gupta R, Atreja A, Verma M, Vishvkarma S. Tuberculosis and nutrition. *Lung India Off*
434 *Organ Indian Chest Soc* 2009; **26**: 9–16. DOI:10.4103/0970-2113.45198.
- 435 7 Bruce N, Perez-Padilla R, Albalak R. Indoor air pollution in developing countries: a major
436 environmental and public health challenge. *Bull World Health Organ* 2000; **78**: 1078–92.
437 DOI:10.1590/S0042-96862000000900004.
- 438 8 Global TB Vaccine Partnership. Global report on tuberculosis vaccines 2018.
439 https://www.tbvi.eu/wp-content/uploads/2018/02/Summary-SWRTV_Finalproof.pdf.
- 440 9 WHO. Global strategy and targets for tuberculosis prevention, care and control after 2015.
441 Geneva, Switzerland: World Health Organization, 2013
442 https://apps.who.int/gb/ebwha/pdf_files/EB134/B134_12-en.pdf?ua=1.
- 443 10 Kyu HH, Maddison ER, Henry NJ, *et al*. The global burden of tuberculosis: results from the Global
444 Burden of Disease Study 2015. *Lancet Infect Dis* 2018; **18**: 261–84. DOI:10.1016/S1473-
445 3099(17)30703-X
- 446 11 WHO. Global tuberculosis report 2016. Geneva, Switzerland: World Health Organization, 2016.
- 447 12 MacNeil A, Glaziou P, Sismanidis C, Date A, Maloney S, Floyd K. Global Epidemiology of
448 Tuberculosis and Progress Toward Meeting Global Targets — Worldwide, 2018. *MMWR Morb*
449 *Mortal Wkly Rep* 2020; **69**. DOI:10.15585/mmwr.mm6911a2.
- 450 13 Pan Z, Zhang J, Bu Q, *et al*. The Gap Between Global Tuberculosis Incidence and the First
451 Milestone of the WHO End Tuberculosis Strategy: An Analysis Based on the Global Burden of
452 Disease 2017 Database. *Infect Drug Resist* 2020; **13**: 1281–6. DOI:10.2147/IDR.S248875
453
- 454 14 World Bank. Country and lending groups. 2020
455 [https://datahelpdesk.worldbank.org/knowledgebase/articles/906519-world-bank-country-and-](https://datahelpdesk.worldbank.org/knowledgebase/articles/906519-world-bank-country-and-lending-groups)
456 [lending-groups](https://datahelpdesk.worldbank.org/knowledgebase/articles/906519-world-bank-country-and-lending-groups).
- 457 15 WHO. Towards TB elimination: an action framework for low-incidence countries. Geneva,
458 Switzerland: World Health Organization, 2014.

- 459 16 Report of the regional workshop on TB surveillance and programme monitoring and evaluation.
460 Bangalore, India: National Tuberculosis Institute, 2009
461 [https://www.who.int/tb/advisory_bodies/impact_measurement_taskforce/meetings/ie_jul09_works](https://www.who.int/tb/advisory_bodies/impact_measurement_taskforce/meetings/ie_jul09_workshop_report.pdf)
462 [hop_report.pdf](https://www.who.int/tb/advisory_bodies/impact_measurement_taskforce/meetings/ie_jul09_workshop_report.pdf).
- 463 17 Vianzon R, Garfin AMC, Lagos A, Belen R. The tuberculosis profile of the Philippines, 2003–
464 2011: advancing DOTS and beyond. *West Pac Surveill Response J WPSAR* 2013; **4**: 11–6.
465 DOI:10.5365/wpsar.2012.3.4.022
- 466 18 Bunte M, Dosch J. Myanmar: Political Reforms and the Recalibration of External Relations. *J Curr*
467 *Southeast Asian Aff* 2015; **34**: 3–19. DOI:10.1177/186810341503400201.
- 468 19 Metzger P, Baloch NA, Kazi GN, Bile KM. Tuberculosis control in Pakistan: reviewing a decade of
469 success and challenges. *East Mediterr Health J* 2010; **16**: 47–53.
470 DOI:10.26719/2010.16.Supp.47.
- 471 20 Institute of Medicine (US) Forum on Drug Discovery D, Science RA of M. Drug-Resistant
472 Tuberculosis in the Russian Federation. National Academies Press (US), 2011
473 <https://www.ncbi.nlm.nih.gov/books/NBK62453/>.
- 474 21 Go U, Park M, Kim U-N, *et al*. Tuberculosis prevention and care in Korea: Evolution of policy and
475 practice. *J Clin Tuberc Mycobact Dis* 2018; **11**: 28–36. DOI:10.1016/j.jctube.2018.04.006.
- 476 22 Song J-H, Huh K, Chung DR. Modern History of Tuberculosis in Korea. *Infect Chemother* 2019;
477 **51**: 414–26. DOI:10.3947/ic.2019.51.4.414.
- 478 23 Cho KS. Tuberculosis control in the Republic of Korea. *Epidemiol Health* 2018; **40**.
479 DOI:10.4178/epih.e2018036.
- 480 24 Bradley EH, Taylor L, Skonieczny M, Curry LA. Grand Strategy and Global Health: The Case of
481 Ethiopia. *Glob Health Gov* 2011; **5**: 11.
482
- 483 25 Law I, Sylavanh P, Bounmala S, *et al*. The first national tuberculosis prevalence survey of Lao
484 PDR (2010–2011). *Trop Med Int Health* 2015; **20**: 1146–54. DOI:10.1111/tmi.12536
485
- 486 26 Ross JM, Henry NJ, Dwyer-Lindgren LA, *et al*. Progress toward eliminating TB and HIV deaths in
487 Brazil, 2001–2015: a spatial assessment. *BMC Med* 2018; **16**: 144.
488 DOI:10.1186/s12916-018-1131-6
489
- 490 27 Hou W-L, Song F-J, Zhang N-X, *et al*. Implementation and community involvement in DOTS
491 strategy: a systematic review of studies in China. *Int J Tuberc Lung Dis* 2012; **16**: 1433–40.
492 DOI:10.5588/ijtld.12.0080
493
- 494 28 Makadzange K. Hope restored in the Kingdom of Eswatini as tuberculosis incidence reduced by
495 more than half. WHO Reg. Off. Afr. 2019; published online Oct 17.
496 [https://www.afro.who.int/news/hope-restored-kingdom-eswatini-tuberculosis-incidence-reduced-](https://www.afro.who.int/news/hope-restored-kingdom-eswatini-tuberculosis-incidence-reduced-more-half)
497 [more-half](https://www.afro.who.int/news/hope-restored-kingdom-eswatini-tuberculosis-incidence-reduced-more-half) (accessed Sept 20, 2020).
498
- 499 29 Liu Y, Bi L, Chen Y, *et al*. Active or latent tuberculosis increases susceptibility to COVID-19 and
500 disease severity. *medRxiv* 2020. DOI:10.1101/2020.03.10.20033795.
501

- 502 30 Tadolini M, Codecasa LR, García-García J-M, *et al.* Active tuberculosis, sequelae and COVID-19
503 co-infection: first cohort of 49 cases. *Eur Respir J* 2020. DOI:10.1183/13993003.01398-2020.
504
- 505 31 Udwadia ZF, Vora A, Tripathi AR, Malu KN, Lange C, Sara Raju R. COVID-19 -Tuberculosis
506 interactions: When dark forces collide. *Indian J Tuberc* 2020; published online July 15.
507 DOI:10.1016/j.ijtb.2020.07.003.
- 508 32 Tham SM, Lim WY, Lee CK, *et al.* Four Patients with COVID-19 and Tuberculosis, Singapore,
509 April–May 2020. *CDC Res Lett* 2020; **26**. DOI:10.3201/eid2611.202752.
- 510 33 Khurana AK, Aggarwal D. The (in)significance of TB and COVID-19 co-infection. *Eur Respir J*
511 2020. DOI:10.1183/13993003.02105-2020.
- 512 34 Motta I, Centis R, D’Ambrosio L, *et al.* Tuberculosis, COVID-19 and migrants: Preliminary
513 analysis of deaths occurring in 69 patients from two cohorts. *Pulmonology* 2020; **26**: 233–40.
514 DOI:10.1016/j.pulmoe.2020.05.002.
- 515 35 The Global Fund. Mitigating the impact of COVID-19 on countries affected by HIV, tuberculosis
516 and malaria. Geneva, Switzerland: The Global Fund to Fight AIDS, Tuberculosis, and Malaria,
517 2020.
- 518 36 Glaziou P. Predicted impact of the COVID-19 pandemic on global tuberculosis deaths in 2020.
519 *medRxiv* 2020. DOI:10.1101/2020.04.28.20079582.
- 520 37 Hogan AB, Jewell BL, Sherrard-Smith E, *et al.* Potential impact of the COVID-19 pandemic on
521 HIV, tuberculosis, and malaria in low-income and middle-income countries: a modelling study.
522 *Lancet Glob Health* 2020. DOI:10.1016/S2214-109X(20)30288-6.
- 523 38 Cilloni L, Fu H, Vesga JF, *et al.* The potential impact of the COVID-19 pandemic on tuberculosis:
524 a modelling analysis. *medRxiv* 2020. DOI:10.1101/2020.05.16.20104075.

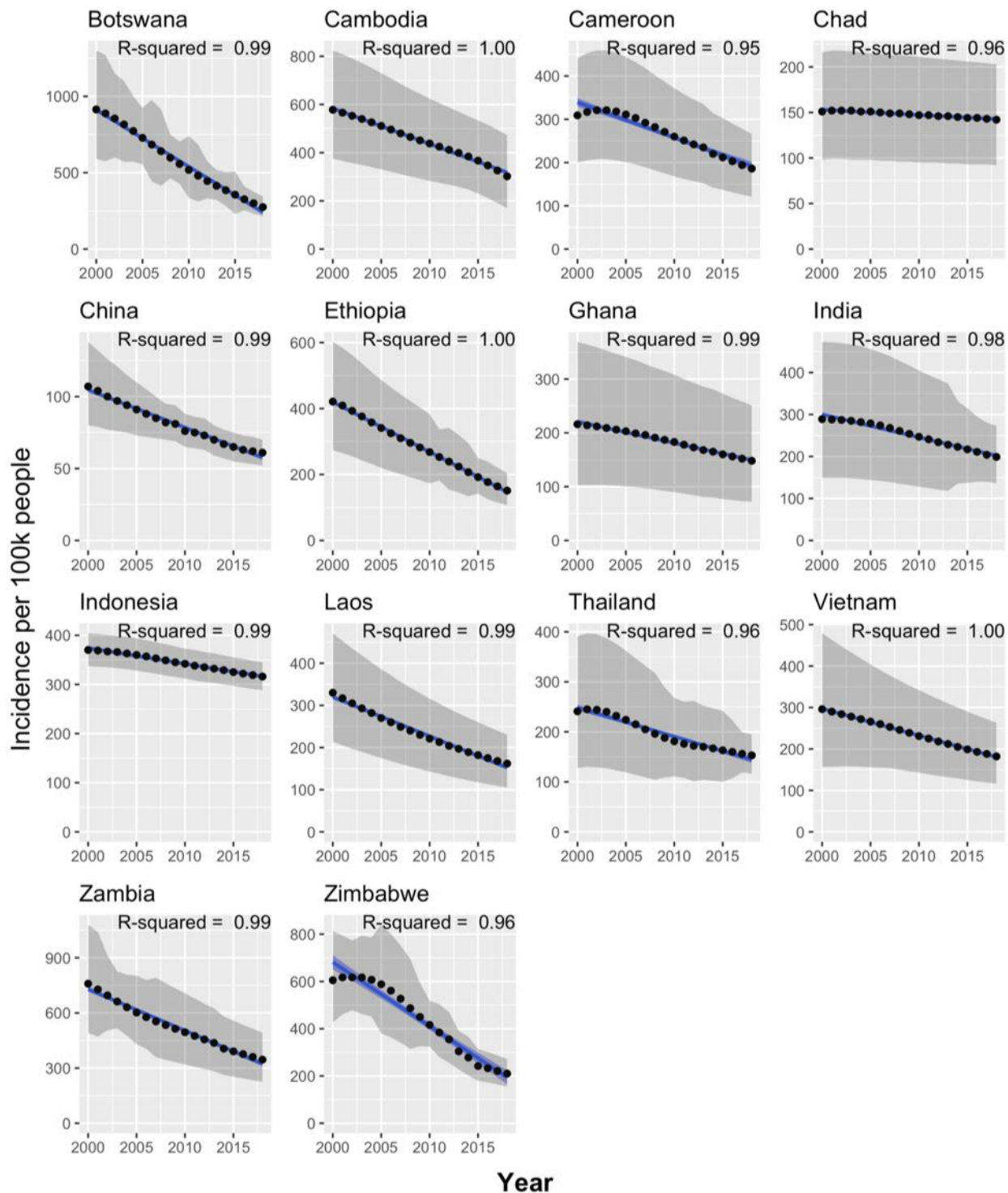


Figure 1. TB incidence in countries with a linear trend, 2000-2018. Black points represent WHO estimated incidence, grey shaded areas represent the WHO high and low bounds for that estimate, blue lines display the fit of the linear model, and the blue shaded areas represent the standard error of the linear model.

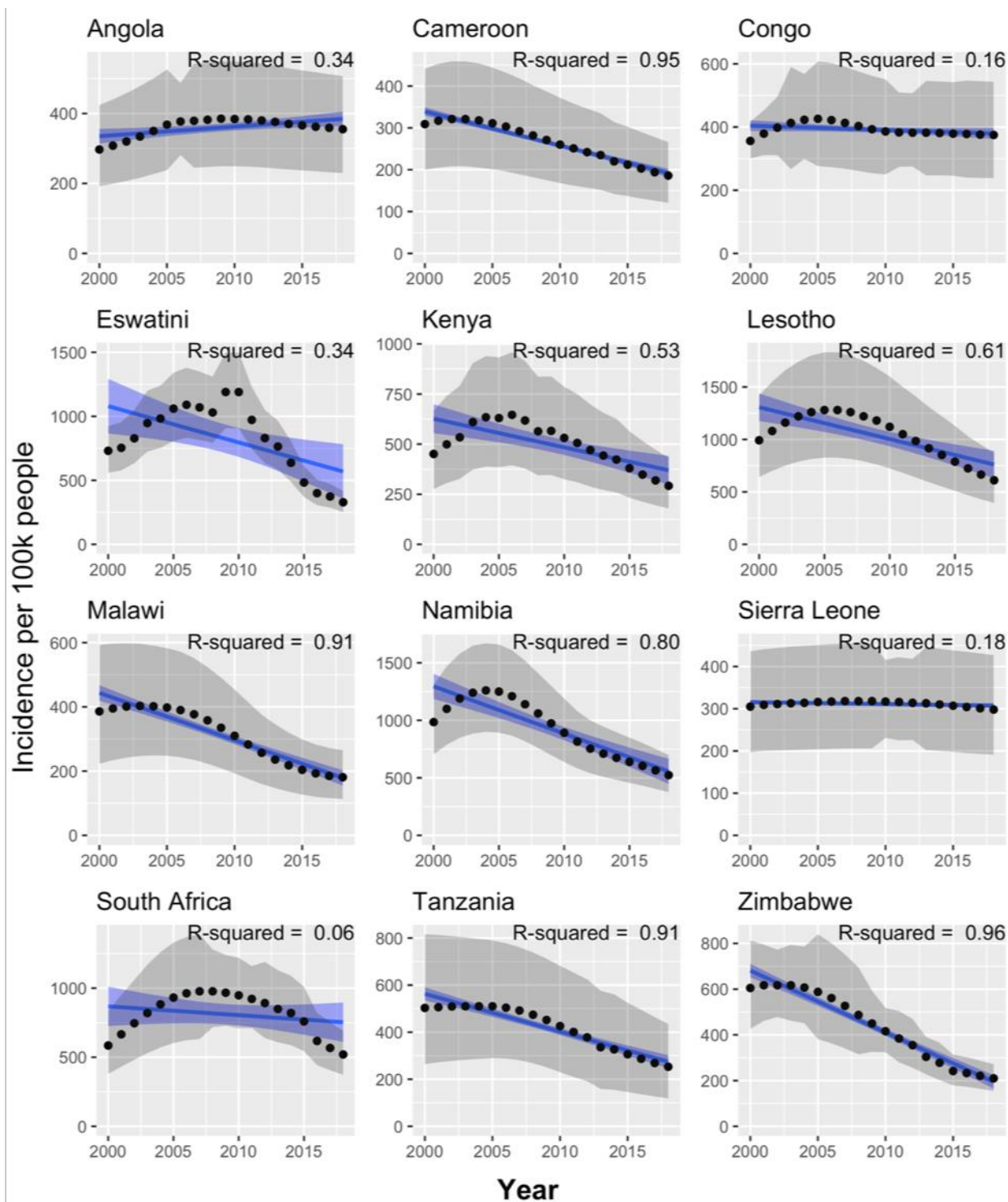


Figure 2. TB incidence in countries whose TB incidence peaked in the 2000s and then declined, 2000-2018. Figure colours as per Figure 1.

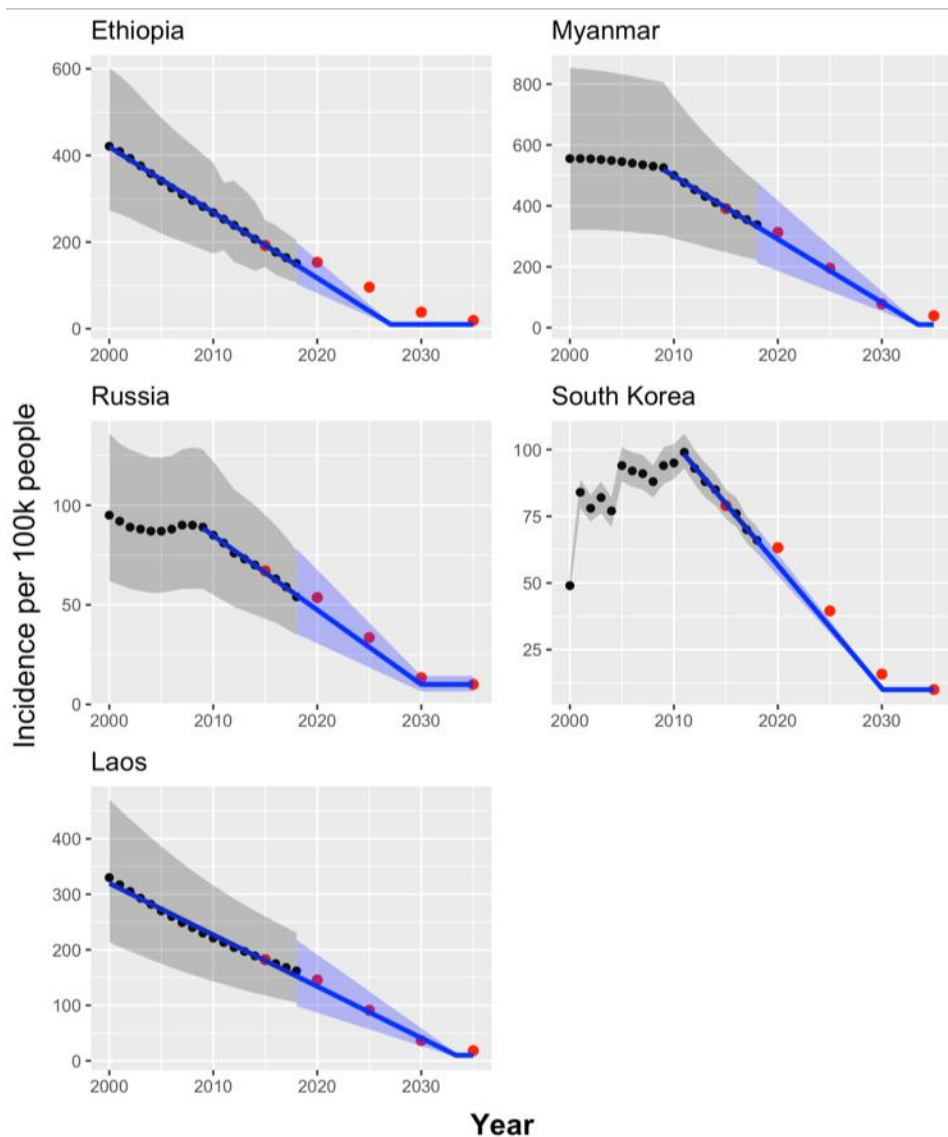


Figure 3. Projected trends in TB incidence in low HIV burden countries predicted to meet the End TB targets. Figure colours as per Figure 1. The red points represent the WHO End TB benchmark targets for incidence.

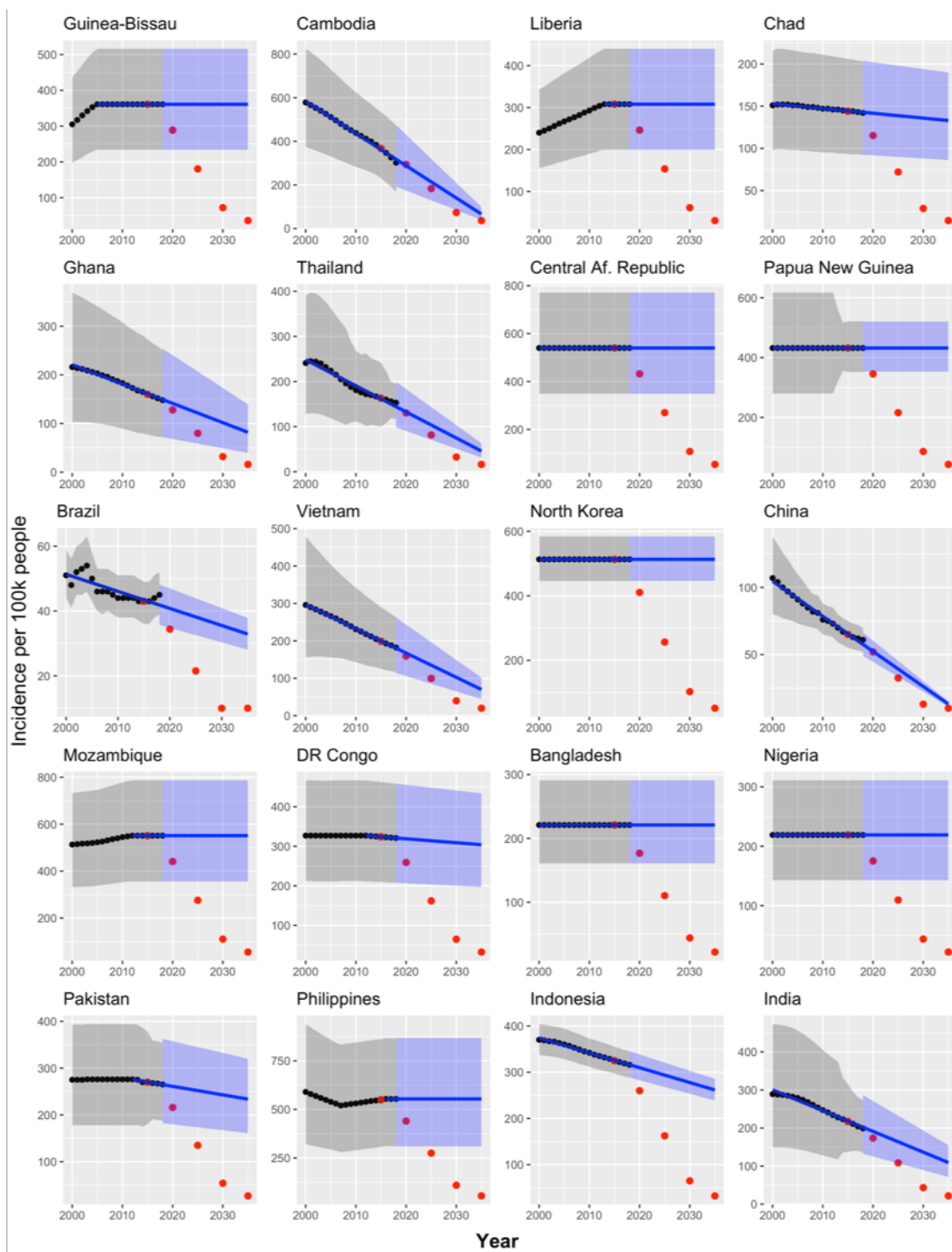


Figure 4. Projected trends in TB incidence in low HIV burden countries predicted to miss the End TB targets. Figure colours as per Figure 1. The red points represent the WHO End TB benchmark targets for incidence.

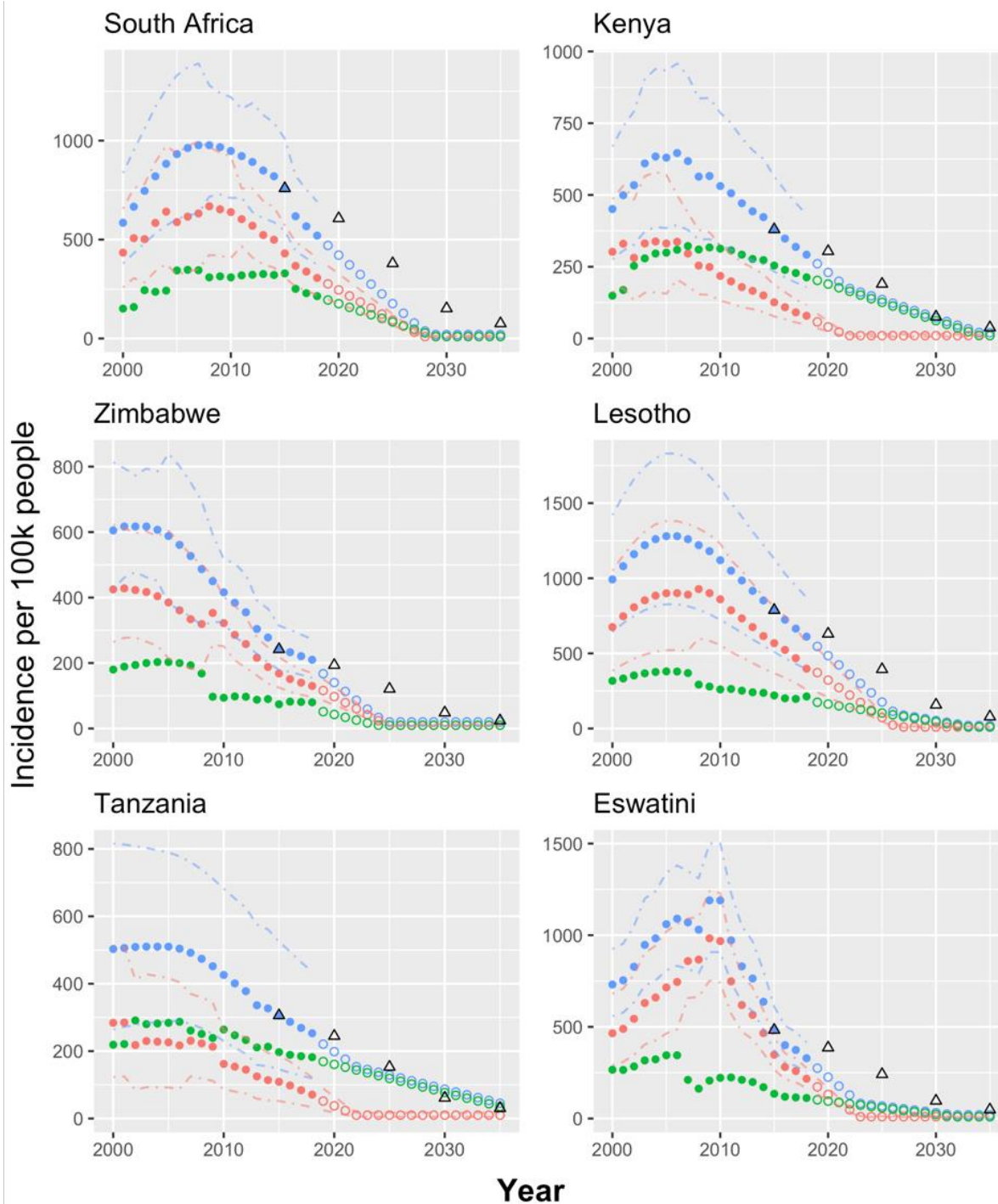


Figure 5. TB incidence by HIV infection status (2000-2018) and predictions from this study (2019-2035) in high HIV burden countries predicted to meet the End TB targets. Dot-dash lines represent confidence intervals on WHO estimates which were only provided for total TB and TB in HIV infected people. Dashed lines represent confidence intervals on projections. Confidence intervals on projections were only available for the HIV infected population. Colour of dashed and dot-dash lines denotes the Population they refer to. Black triangles represent the End TB targets.

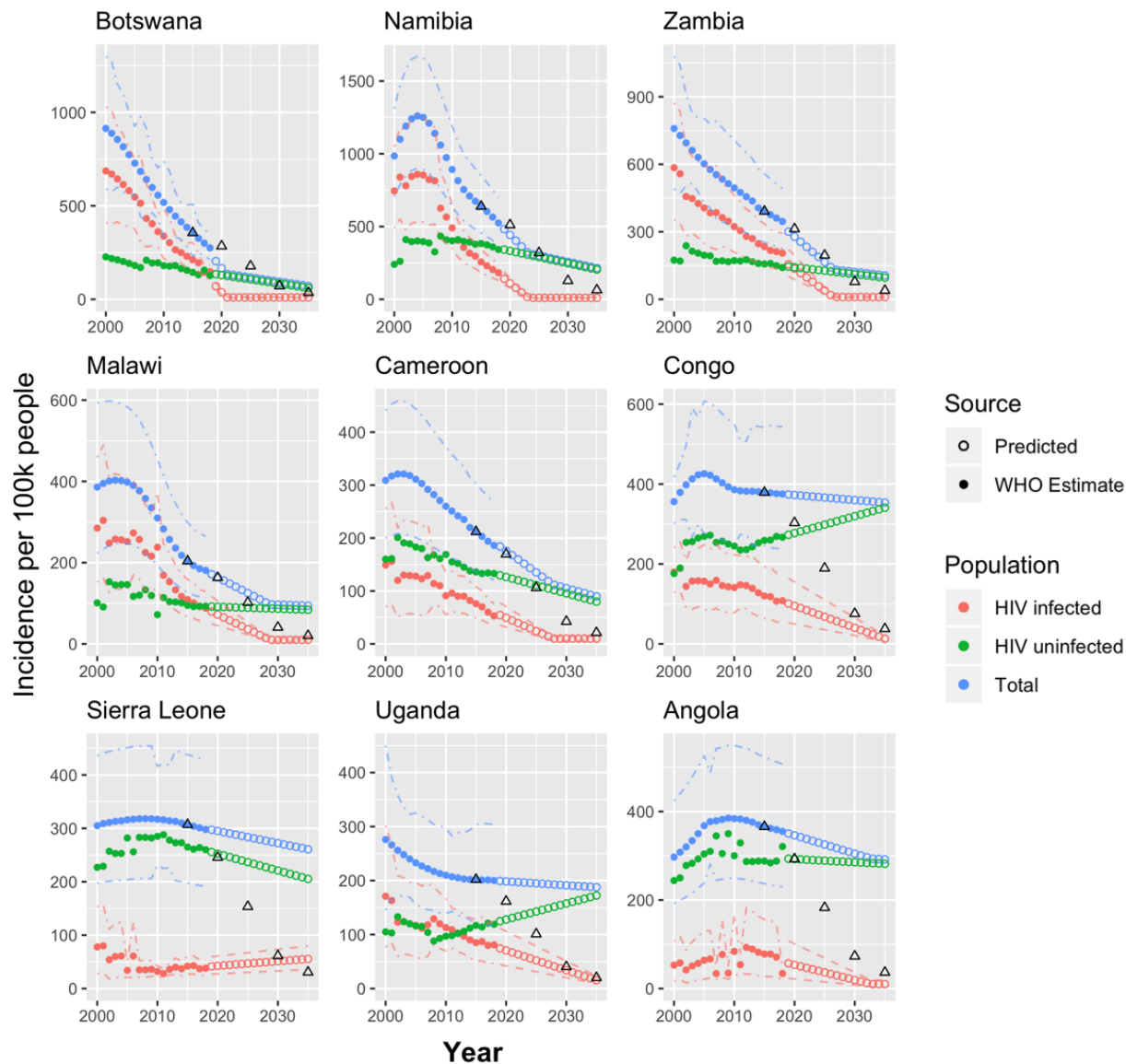


Figure 6: TB incidence by HIV infection status (2000-2018) and predictions from this study (2019-2035) in high HIV burden countries predicted to miss the End TB targets. Figure colours and annotations as per Figure 5.

Country	R-squared	Coefficient	Type
Angola	0.34	2.75	Linear recently
Bangladesh	NaN	NaN	No reliable information
Botswana	0.99	-37.25	Linear decrease
Brazil	0.67	-0.53	Other
Cambodia	1.00	-14.79	Linear decrease
Cameroon	0.95	-8.16	Linear decrease
Central African Republic	NaN	NaN	No reliable information
Chad	0.96	-0.57	Linear decrease
China	0.99	-2.62	Linear decrease
Congo	0.16	-1.37	Linear recently
Democratic Republic of the Congo	0.61	-0.27	Linear recently
Eswatini	0.34	-28.36	Linear recently
Ethiopia	1.00	-15.14	Linear decrease
Ghana	0.99	-3.97	Linear decrease
Guinea-Bissau	0.51	2.15	Flat recently
India	0.98	-5.45	Linear decrease
Indonesia	0.99	-3.21	Linear decrease
Kenya	0.53	-14.28	Linear recently
Laos	0.99	-9.29	Linear decrease
Lesotho	0.61	-30.34	Linear recently
Liberia	0.94	4.17	Linear recently
Malawi	0.91	-14.70	Linear recently
Mozambique	0.92	2.55	Linear recently
Myanmar	0.90	-12.89	Linear recently
Namibia	0.80	-41.08	Linear recently
Nigeria	NaN	NaN	No reliable information
North Korea	NaN	NaN	No reliable information
Pakistan	0.54	-0.48	Linear recently
Papua New Guinea	NaN	NaN	No reliable information
Philippines	0.11	-1.08	Flat recently
Russian Federation	0.84	-2.00	Linear recently
Sierra Leone	0.18	-0.45	Linear recently
South Africa	0.06	-6.38	Linear recently
South Korea	0.00	0.09	Linear recently
Tanzania	0.91	-16.04	Linear recently
Thailand	0.96	-5.78	Linear decrease
Uganda	0.87	-4.00	Linear recently
Vietnam	1.00	-6.49	Linear decrease
Zambia	0.99	-22.56	Linear decrease
Zimbabwe	0.96	-27.05	Linear decrease

Table 1: Results of linear model fit to TB incidence data for all 40 countries, 2000-2018. Table available on Figshare, DOI: [10.6084/m9.figshare.13040708.v2](https://doi.org/10.6084/m9.figshare.13040708.v2).

Country	Number of excess cases	Incidence per 100,000 people in 2035 if End TB targets were met	Projected incidence per 100,000 in 2035 if current trends continue (high and low bound)	Will it meet targets?	Year regression was run from
Guinea-Bissau	86927	36	361 (234, 516)	No	2000
Cambodia	113353	37	66 (40, 99)	No	2000
Liberia	191948	31	308 (199, 440)	No	2015
Chad	281882	14	133 (86, 190)	No	2000
Ghana	304175	16	82 (40, 139)	No	2005
Thailand	307074	16	46 (31, 63)	No	2006
Central African Republic	314250	54	540 (349, 771)	No	2000
Papua New Guinea	453520	43	432 (353, 520)	No	2000
Brazil	682441	4	10 (7, 13)	No	2000
Vietnam	714203	20	70 (44, 102)	No	2000
North Korea	1351759	51	513 (446, 584)	No	2012
China	1702835	7	13 (11, 15)	No	2000
Mozambique	2215531	55	551 (356, 787)	No	2009
Democratic Republic of the Congo	3559303	32	304 (197, 434)	No	2015
Bangladesh	3897209	22	221 (161, 291)	No	2000
Nigeria	5632945	22	219 (143, 311)	No	2000
Pakistan	6017711	27	234 (161, 320)	No	2012
Philippines	6765490	55	554 (310, 868)	No	2016
Indonesia	7709479	33	262 (239, 286)	No	2010
India	16197732	22	109 (72, 155)	No	2000
Ethiopia	-760545	19	10 (7, 14)	Yes	2000
Myanmar	-102590	39	10 (6, 14)	Yes	2011
Russia	-70207	7	10 (6, 14)	Yes	2009
South Korea	-34788	8	10 (9, 11)	Yes	2009
Laos	-4303	18	10 (6, 14)	Yes	2007

Table 2: Assessment of End TB targets in 25 countries without high HIV burden.

Table available on Figshare, DOI: 10.6084/m9.figshare.13040708.v2.

Country	HIV infected		HIV uninfected		Overall		Will it meet targets?	Number of excess cases
	TB Incidence per 100,000 people in 2035 if End TB targets were met	Projected TB incidence per 100,000 people in 2035 (high and low bound)	TB Incidence per 100,000 people in 2035 if End TB targets were met	Projected TB incidence per 100,000 people in 2035 (high and low bound)	TB Incidence per 100,000 people in 2035 if End TB targets were met	Projected TB incidence per 100,000 people in 2035 (high and low bound)		
South Africa	43	Effective elimination	16	Effective elimination	39	Effective elimination	Yes	-1424402
Kenya	13	Effective elimination	12	Effective elimination	20	Effective elimination	Yes	-348484
Zimbabwe	17	Effective elimination	Effective elimination	Effective elimination	24	Effective elimination	Yes	-131941
Lesotho	57	Effective elimination	20	Effective elimination	31	Effective elimination	Yes	-51109
Tanzania	11	Effective elimination	38	35 (17, 61)	64	45 (27, 71)	Yes	-23109
Eswatini	35	Effective elimination	33	Effective elimination	76	Effective elimination	Yes	-22596
Botswana	21	Effective elimination	14	61 (45, 79)	36	71 (55, 89)	No*	-10290
Namibia	26	Effective elimination	25	205 (147, 272)	38	215 (157, 282)	No*	25976
Zambia	23	Effective elimination	27	96 (62, 137)	31	106 (72, 147)	No*	56628
Malawi	11	Effective elimination	Effective elimination	84 (52, 123)	48	94 (62, 133)	No	157789
Cameroon	Effective elimination	Effective elimination	14	80 (52, 114)	21	90 (62, 124)	No	235378
Congo	12	13 (10, 21)	26	341 (236, 463)	38	354 (246, 484)	No	242721
Sierra Leone	Effective elimination	56 (36, 80)	22	205 (132, 293)	79	261 (168, 373)	No	245897
Uganda	Effective elimination	15 (10, 23)	10	172 (103, 259)	20	188 (113, 283)	No	1088780
Angola	Effective elimination	Effective elimination	29	282 (201, 368)	37	292 (211, 378)	No	1249365

Table 3: Assessment of End TB targets in 15 countries with high HIV burden, separated by HIV infection.
Table available on Figshare, DOI: 10.6084/m9.figshare.13040708.v2.