



36 **Abstract**

37 Background

38 The SARS-CoV-2 pandemic necessitated rapid and global responses across all areas  
39 of healthcare, including an unprecedented interest in serological immunoassays to  
40 detect antibodies to the virus. The dynamics of the immune response to SARS-CoV-  
41 2 is still not well understood and requires further investigation into the longevity of  
42 humoral immune response that is evoked due to SARS-CoV-2 infection.

43 Methods

44 We measured SARS-CoV-2 antibody levels in plasma samples from 880 people in  
45 Northern Ireland using Roche Elecsys Anti-SARS-CoV-2 IgG/IgA/IgM, Abbott SARS-  
46 CoV-2 IgG and EuroImmun IgG SARS-CoV-2 ELISA immunoassays to analyse  
47 immune dynamics over time. We undertook a laboratory evaluation for the UK-RTC  
48 AbC-19 rapid lateral flow immunoassay (LFIA), for the target condition of SARS-CoV-  
49 2 Spike protein IgG antibodies using a reference standard system to establish a  
50 characterised panel of 330 positive and 488 negative SARS-CoV-2 IgG samples.

51 Results

52 We detected persistence of SARS-CoV-2 IgG up to 140 days (20 weeks) post  
53 infection, across all three laboratory-controlled immunoassays. On the known positive  
54 cohort, the UK-RTC AbC-19 lateral flow immunoassay showed a sensitivity of 97.58%  
55 (95.28%-98.95%) and on known negatives, showed specificity of 99.59% (98.53 %-  
56 99.95%).

57 Conclusions

58 Through comprehensive analysis of a cohort of pre-pandemic and pandemic  
59 individuals, we show detectable levels of IgG antibodies, lasting up to 140 days,  
60 providing insight to antibody levels at later time points post infection. We show good

61 laboratory validation performance metrics for the AbC-19 rapid test for SARS-CoV-2  
62 Spike protein IgG antibody detection in a laboratory based setting.

63

#### 64 **Keywords**

65 SARS-CoV-2, COVID-19, immunoassay, LFIA, pandemic, antibody assay

66

#### 67 **Introduction**

68 The World Health Organization declared a pandemic in March 2020 due to severe  
69 acute respiratory syndrome coronavirus-2 (SARS-CoV-2), identified late 2019 in  
70 Wuhan, China, causing COVID-19 disease (1,2).

71 A global race ensued to develop diagnostic assays, with the most common being viral  
72 RNA detection (RT-qPCR assays), to detect acute infection(3). RT-qPCR assays are  
73 labour and reagent intensive, limited by a short temporal window for positive diagnosis,  
74 and exhibit potential for false negative results (4). Evidence suggests sensitivity of RT-  
75 qPCR can be as low as 70% (5). Lockdown measures and “flattening the curve”  
76 strategies meant many infected individuals were instructed to self-isolate and were not  
77 offered a diagnostic RT-qPCR, with much of the testing limited to patients admitted to  
78 hospital, who perhaps reflect a more severely infected cohort. Consequently, a  
79 potentially large number of cases were unconfirmed or undetected(6).

80 The ability to accurately detect SARS-CoV-2 specific antibodies, which develop after  
81 an immune response is evoked, is vital for building biobanks of convalescent sera for  
82 treatment, monitoring immune response to infection alongside surveillance studies  
83 and assessing responses to vaccination programmes. The timing for when antibody  
84 against the novel SARS-CoV-2 virus can be measured is at this time not fully  
85 characterised.

86 Commercial serology immunoassays are mostly laboratory-based and measure IgG  
87 antibody levels in plasma or serum. Alternatively, lateral flow immunoassays (LFIAs),  
88 require a finger prick blood sample and can be used at point-of-care (POC) or in the  
89 home; particularly important in the context of lockdown enforcement during the  
90 pandemic. Currently, a limited number of laboratory-based chemiluminescence  
91 immunoassays are approved for use in the UK including the Roche Elecsys Anti-  
92 SARS-CoV-2 IgG/IgA/IgM against the SARS-CoV-2 Nucleocapsid antigenic region  
93 (Roche Diagnostics, Basel, Switzerland) and the Abbott SARS-CoV-2 IgG assay  
94 against the same antigenic region (Abbott Diagnostics, Abbott Park, IL, USA).

95 The complexities of the humoral immune response to SARS-CoV-2 is a much-  
96 debated topic. In a US study, approximately one in 16 individuals lacked detectable  
97 IgG antibodies up to 90 days post symptom onset, despite previous RT-PCR  
98 confirmed infection (7). Patients who remain asymptomatic may mount a humoral  
99 immune response which is short-lived, with detectable levels of antibody falling  
100 rapidly (8). This, alongside potentially low sensitivity and lack of RT-PCR test  
101 availability across the UK has hindered development of well characterised gold  
102 standard serology test for IgG antibodies to SARS-CoV-2.

103 Herein, we describe the use of Roche and Abbott commercial immunoassays, as well  
104 as the EuroImmun Anti-SARS-CoV-2 ELISA-IgG against the S1 domain of the spike  
105 antigenic protein of SARS-CoV-2 (EuroImmun UK, London, UK) to characterise pre-  
106 pandemic and pandemic COVID-19 blood samples (n=880) from within Northern  
107 Ireland and report on longevity of IgG antibodies detected. Presently, there is no gold  
108 standard assay for comparison, therefore we aimed to establish a reference based on  
109 a positive COVID-19 antibody status. We present results of a laboratory evaluation of  
110 the UK-RTC AbC-19 with a target condition of antibodies against a cohort of 330

111 known IgG antibody positive samples according to this 'positive by two' system and  
112 488 negative samples (223 pre-pandemic assumed negative and 265 known negative)  
113 for IgG to SARS-CoV-2.

114

## 115 **Methods**

116

### 117 **Participant samples**

118 The flow of participant samples is summarised in Figure S1. All participants provided  
119 informed consent with no adverse events. An online recruitment strategy was  
120 employed, with the study advertised through internal Ulster University email, website  
121 and social media. A BBC Newsline feature providing the pandemic study email  
122 address also prompted interest from the general population.

123

124 A small cohort (n=19) of anonymised plasma samples were obtained from a partner  
125 USA laboratory for initial protocol development only. The first 800 respondents who  
126 expressed interest were provided with an online patient information sheet, consent  
127 form and health questionnaire and invited to register to attend a clinic. Exclusion  
128 criteria related to blood disorder or contraindication to giving a blood sample. To enrich  
129 the cohort for samples potentially positive for SARS-CoV-2 IgG antibody, further  
130 participants were invited if they had previously tested PCR positive or had the  
131 distinctive symptom of loss of taste and smell. Blood sampling clinics were held at  
132 locations around Northern Ireland between April and July 2020 resulting in collection  
133 of 263 10ml EDTA plasma samples from 263 separate study participants. Additional  
134 anonymised plasma samples were obtained from Southern Health and Social Care

135 Trust (SHSCT) Healthcare workers (n=195), and Northern Ireland Blood Transfusion  
136 Service (NIBTS, n=184) through convalescent plasma programs.

137

138 Pre-pandemic samples (prior to June 2019, n=136) were obtained from Ulster  
139 University ethics committee approved studies with ongoing consent and from NIBTS  
140 (n= 200, more than 3 years old). Plasma samples were used at no more than 3 freeze-  
141 thaw cycles for all analyses reported within this manuscript.

142

### 143 **Clinical information**

144 Basic demographic information and data with regard to probable or definite prior  
145 infection with SARS-CoV-2 virus was obtained from PANDEMIC study participants  
146 through the secure online questionnaire requiring responses about positive RT-PCR  
147 result and/or time from symptom onset. Anonymised participant samples from USA,  
148 SHSCT and NIBTS were provided with age, gender and time since PCR-positive,  
149 where a previous test had been carried out.

150

### 151 **Laboratory-based immunoassays**

152 Details of laboratory immunoassays are summarised in supplementary methods and  
153 Table S1.

154

### 155 **UK-RTC AbC-19 LFIA**

156 UK-RTC AbC-19 testing was conducted at Ulster University according to  
157 manufacturer's instructions (details in Table S1). Assays were performed as cohorts,  
158 with samples in batches of 10, with one researcher adding 2.5 $\mu$ L of plasma to the  
159 assay and a second adding 100 $\mu$ L of buffer immediately following sample addition.

160 After 20 minutes, the strength of each resulting test line was scored from 0-10  
161 according to a visual score card (scored by 3 researchers; Figure S2). A score  $\geq 1$  was  
162 positive. Details of samples used for analysis for detection of antibodies are available  
163 in Supplementary methods.

164

### 165 **Statistical analysis**

166 As per Daniel (9) a minimum sample size based on prevalence can be calculated  
167 using the following formula:  $n = \frac{Z^2 P(1-P)}{d^2}$ , where n = sample size, Z = Z statistic for a  
168 chosen level of confidence, P = estimated prevalence, and d = precision. Assuming  
169 a prevalence of SARS-CoV-2 of 10% and a precision of 5%, we estimate that the  
170 required sample size at 99% confidence (Z = 2.58) to be 240 individuals. If the true  
171 prevalence is lower, 5%, the estimated required sample size given a precision of  
172 2.5% is 506 individuals. A minimum sample size of 200 known positives and 200  
173 known negatives is given within MHRA guidelines for SARS-CoV-2 LFIA antibody  
174 immunoassays(10).

175 Statistical analysis was conducted in R v 4.0.2(11). To assess discordance between  
176 test results, data was first filtered to include individuals with an Abbott test result in the  
177 range  $\geq 0.25$  &  $\leq 1.4$ , with a 2 x 2 contingency table produced that comprised all  
178 possible combinations of [concordant|discordant] test results [within|outside of] this  
179 range. A p-value was derived via a Pearson  $\chi^2$  test after 2000 p-value simulations via  
180 the stats package.

181 AbC-19 LFIA performance analyses were performed using MedCalc online (MedCalc  
182 Software, Ostend, Belgium). ROC analysis was performed via the pROC package. To  
183 compare test result (Positive|Negative) to age, a binary logistic regression model was  
184 produced with test result as outcome – a p-value was then derived via  $\chi^2$  ANOVA. To

185 compare time against test result (encoded continuously), a linear regression was  
186 performed. We calculated median per time-period and then converted these to log  
187 [base 2] ratios against the positivity cut-off for each assay. All plots were generated  
188 via ggplot2 or custom functions using base R(12).

189

## 190 **Results**

191 We analysed samples from a mixed cohort of individuals from the general public  
192 (n=279), Northern Ireland healthcare workers (n=195), pre-pandemic blood donations  
193 and research studies (n=223) and through a convalescent plasma program (n=183).  
194 Antibody levels in plasma from these 880 individuals were assessed using the three  
195 SARS-CoV-2 immunoassays; EuroImmun IgG, Roche Elecsys IgG/IgM/IgA and  
196 Abbott Architect IgG (Table S1). This included a cohort of 223 pre-pandemic plasma  
197 samples collected and stored during 2017 to end of May 2019 to determine assay  
198 specificity. Of the 657 participants whose samples were collected during the  
199 pandemic, 265 (40.33%) previously tested RT-PCR positive with a range of 7-173  
200 days since diagnosis. A total of 225 participants gave time since self-reported COVID-  
201 19 symptoms, with a range of 5-233 days from symptom onset, whilst 198 had no  
202 symptom or PCR data available.

203

### 204 *Laboratory based antibody immunoassays*

205 A positive result for antibody on one or more of the three laboratory immunoassays  
206 was recorded for 385/657 (58.6%) participants who provided a sample during the  
207 pandemic. By EuroImmun ELISA, 346 were positive, 20 borderline and 291 were  
208 negative. The Roche assay detected 380 positive and 277 negative, whilst Abbott



209 determined 310 positive and 347 negative (Table S2). The median age across all age  
210 groups combined was lower for participants testing positive across each of the  
211 immunoassays (median [sd] for positive versus negative, respectively: EuroImmun, 41  
212 [13.16] vs 48 [12.95]; Roche, 42 [13.08] vs 48 [13.00]; Abbott, 41 [13.18] vs 47 [13.09]).  
213 (Figure S3,  $p < 0.0001$ ). When segregated by age group, however, differences were  
214 less apparent in certain groups (Figure S4). Excluding the pre-pandemic cohort, this  
215 gap reduced but remained statistically significant EuroImmun, 41 [13.18] vs 45 [12.49];  
216 Roche, 42 [13.15] vs 45 [12.49]; Abbott, 41 [13.26] vs 44 [12.63]) ( $p < 0.01$ ) (median  
217 [sd] for positive versus negative). Of note, out of 265 individuals with a previous  
218 positive RT-PCR result for SARS-CoV-2 viral RNA, 14 (5.2%) did not show detectable  
219 antibodies by any of the three immunoassays, with no association found with age,  
220 gender or time between test and blood draw (data not shown).

221 The three commercial laboratory immunoassays provide a ratio value that increases  
222 with IgG antibody titre. When correlation between these values is assessed, good  
223 overall agreement is observed between the three immunoassays (Figure 1, Figure  
224 S5). As highlighted by Rosadas *et al.*, we also see significant disagreement in the  
225 Abbott 0.25-1.4 range when compared to EuroImmun and Roche (Figure 1a,b; chi-  
226 square p-values: EuroImmun vs Abbott,  $p < 0.001$ ; Roche vs Abbott,  $p < 0.001$ )(13).

227

### 228 *Duration of humoral response to SARS-CoV-2*

229 We found IgG antibodies could still be detected in individuals (excluding pre-  
230 pandemic) across all three immunoassays used up to week 20 (day 140) (Figure 2).

231 We note a statistically significant decrease in signal with respect to time across each  
232 assay (p-value [slope]): EuroImmun,  $p = 0.036$  [-0.785]; Roche,  $p = 0.002$  [-0.125];  
233 Abbott,  $p < 0.0001$  [-3.585]. These remained statistically significant after adjustment

234 for age. Antibody levels (expressed as a ratio of median result per timepoint divided  
235 by positivity cut off; Figure 2d) peaked at Week 1-2 for EuroImmun (1.33) and Abbott  
236 (1.64), though reached highest levels at Week 8-12 when measured by Roche  
237 (5.45). By week 21-24, median score for all tests had dropped below the positivity  
238 cut off, though a small number of RT-PCR positive samples remained above the  
239 positive cut off at these later timepoints (Figure 2).

240

#### 241 *UK-RTC AbC-19*

242 Using the commercial immunoassays described we established a well characterised  
243 serology sample set of 'known positive' and 'known negative' for IgG antibodies to  
244 SARS-CoV-2 to evaluate performance metrics for the UK-RTC AbC-19 Rapid LFIA.

245 AbC-19 detects IgG antibodies against the spike protein antigen, so we therefore  
246 required all samples to be positive by the EuroImmun SARS-CoV-2 IgG ELISA, which  
247 likewise detects antibodies against the S1 domain (14). To develop this characterised  
248 cohort, samples were also required to be positive by a second immunoassay (Roche  
249 or Abbott). To analyse specificity of the AbC-19 LFIA for detection of SARS-CoV-2 IgG  
250 antibody, we assessed 350 plasma samples from participants classed as 'known  
251 negative for SARS-CoV-2 IgG antibody' on the AbC-19 LFIA. All samples were from  
252 individuals confirmed to be negative across all three laboratory assays (Roche,  
253 EuroImmun, Abbott). Using these positive n=304 and negative n=350 antibody  
254 cohorts, we determined a sensitivity for detecting SARS-CoV-2 IgG antibody of  
255 97.70% (95% CI; 95.31%-99.07%) and specificity of 100% (98.95%-100.00%) for the  
256 AbC-19 LFIA (Table 1).

257 Given a recent report of lower specificity in the AbC-19 LFIA (15) and the possibility  
258 of introducing sample bias, we revised our inclusion criteria for the negative cohort.

259 For the pre-pandemic cohort, we included samples from all 223 individuals,  
260 regardless of results on other laboratory immunoassays. When this assumed  
261 negative pre-pandemic cohort was used for laboratory evaluation for target condition  
262 of antibodies, we observed a specificity of 99.55% (97.53% to 99.99%, Table 1). We  
263 obtained more AbC-19 devices and expanded the negative cohort to include all  
264 samples that matched our criteria (samples collected during the pandemic to be  
265 negative by all three laboratory assays and all pre-pandemic samples regardless of  
266 other immunoassay results). The specificity observed on this extended negative  
267 cohort of 488 samples was 99.59% (98.53% to 99.95%, Table 1). For sensitivity  
268 analysis on a positive cohort (samples positive by EuroImmun and one other test),  
269 we were able to analyse all samples previously untested due to limited testing  
270 capacity and tested a positive cohort of 330 samples giving a sensitivity of 97.58%  
271 (95.28% to 98.95%, Table 1).

272

273 When used for its intended use case, the AbC-19 LFIA provides binary  
274 positive/negative results. However, when assessing LFIA in the laboratory, each test  
275 line was scored against a scorecard by three independent researchers (0 negative, 1-  
276 10 positive; Figure S2). Compared to quantitative outputs from the Abbott, EuroImmun  
277 and Roche assays, the AbC-19 LFIA shows good correlation (Abbott  $r=0.84$  [ $p<0.001$ ];  
278 EuroImmun  $r=0.86$  [ $p<0.001$ ]; Roche  $r=0.82$  [ $p<0.001$ ]; Figure 3, Figure S5-Figure S7).

279

### 280 *Analytical specificity and sensitivity of AbC-19 LFIA*

281 We observed no cross-reactivity across samples with known H5N1 influenza,  
282 Respiratory syncytial virus, Influenza A, Influenza B, Bordetella Pertussis,  
283 Haemophilus Influenzae, Seasonal coronavirus NL63 and 229E on the AbC-19 LFIA

284 (n=34 samples, n=8 distinct respiratory viruses; Table S3). Against a panel of external  
285 reference SARS-CoV-2 serology samples, the AbC-19 LFIA detected antibodies with  
286 scores commensurate to the EuroImmun ELISA scores (Figure S8, Table S4).

287

## 288 **Discussion**

289 Serological antibody immunoassays are an important tool in helping combat the  
290 SARS-CoV-2 pandemic. One difficulty faced in validation of antibody diagnostic  
291 assays has been access to samples with known SARS-CoV-2 antibody status. As  
292 previously described, there is no clear gold standard for reference against which to  
293 assess SARS-CoV-2 immunoassays. A positive RT-PCR test has been used  
294 previously to indicate previous COVID-19 infection, though this approach is limited by  
295 a high rate of false negatives, failure in some cases to develop IgG antibodies (sero-  
296 silence or lack of antibody against the same antigenic component of the virus as the  
297 immunoassay uses as a capture antigen) and the lack of RT-PCR testing availability  
298 early in the pandemic (3,5,16). We failed to detect SARS-CoV-2 IgG antibody in 14 of  
299 265 (5.2%) of previously RT-PCR SARS-CoV-2 viral RNA positive participants in this  
300 study. It is unclear if this is due to insufficient/absent antibody production in these  
301 individuals, or due to a false positive PCR result which may occur in the UK at a rate  
302 between 0.8- 4.0% (17). Self-assessment of symptoms for COVID-19 disease is a  
303 poor indicator of previous infection, even amongst healthcare workers (18).  
304 Asymptomatic individuals may be unaware of infection and others may harbour pre-  
305 existing immunity or elucidate a T cell response. Additionally, the kinetics of a SARS-  
306 CoV-2 virus infection contributes to the loss of sensitivity of RT-PCR to detect virus  
307 with time, contributing to false negative RT-PCR test results for individuals who may  
308 be late to present for virus detection tests (5,19).

309

310 Our results show strong correlation between all three immunoassays, with  
311 shortcomings in the Abbott system output 0.25-1.4 range, as described previously,  
312 suggesting an overestimated positive cut-off (Figure 1) (13). Our detection of  
313 antibodies 140 days after RT PCR positive status (20 weeks, and beyond in a small  
314 number of samples) indicates persistence IgG antibodies to both the spike protein  
315 and nucleocapsid protein, despite typical patterns of antibody decay after acute viral  
316 antigenic exposure being as rapid (20). Others have reported SARS-CoV-2  
317 antibodies decline at 90 days (19), we also noted a statistically significant decline  
318 over time but levels remain detectable at 140 days (Figure 2). We note that IgG  
319 levels reach their peak (Roche ratio 5.45 times threshold cut-off) as late as Week 8-  
320 12 from first symptoms or a viral RNA RT-PCR positive result, though this may be an  
321 artefact of lower number of participants at earlier timepoints (Figure 2d). Longitudinal  
322 studies on SARS-CoV-1 convalescent patients suggests that detectable IgG can still  
323 be present as long as 2 years after infection (21). Further studies are needed on  
324 large cohorts with sequential antibody immunoassays performed on symptomatic  
325 and non-symptomatic individuals as well as those with mild or severe COVID-19 to  
326 fully elucidate the humoral immune response to SARS-CoV-2. This is vital to inform  
327 vaccine durability, so-called 'immune passports' and in the definition of a protective  
328 threshold for anti-SARS-CoV-2 antibodies.

329 To assess sensitivity and specificity of the AbC-19 LFIA for its ability to detect SARS-  
330 CoV-2 antibody in a laboratory evaluation, we developed a reference standard for  
331 SARS-CoV-2 antibodies, which does not rely on a single test as reference. A similar  
332 approach was used in a recent seroprevalence study in Iceland, whereby two positive

333 antibody results were required to determine a participant sample as positive for SARS-  
334 CoV-2 antibody (16).

335 Our evaluation of performance metrics for the UK-RTC AbC-19 LFIA to detect  
336 antibodies for SARS-CoV-2 gave 97.58% sensitivity and 99.59% specificity. In a  
337 recent evaluation of the AbC-19 tests, Mulchandani et al. observed a specificity of  
338 97.9% (97.2%-98.4%) on a cohort of pre-pandemic samples and report a sensitivity  
339 of 92.5% (88.8% to 95.1%) for detecting previous infections (based on a previous  
340 RT-PCR result) or 84.7% (80.6% to 88.1%) against the Roche Elecsys antibody test,  
341 which detects IgM/IgG/IgA SARS-CoV-2 antibodies to the nucleocapsid portion of  
342 SARS-CoV-2 (18).

343 In our study, good correlation was observed in quantitative score between results on  
344 all immunoassays with the highest observed between EuroImmun and AbC-19 LFIA  
345 (Figure S6, S7). This is to be expected, given both the AbC-19 LFIA and EuroImmun  
346 ELISA detect IgG antibodies against spike protein. For the assessment of immunity to  
347 prior natural infection as well as to immunisation, it is important to note IgG antibodies  
348 against SARS-CoV-2 spike protein detected by laboratory-based EuroImmun ELISA  
349 and AbC-19 LFIA are known to correlate with neutralizing antibodies, which may  
350 confer future immunity (22,23).

351 Previous evaluations of the sensitivity and specificity reported by Public Health  
352 England (PHE), showed a EuroImmun sensitivity of 72% and specificity of 99%, Abbott  
353 with sensitivity of 92.7% and specificity of 100% and Roche with sensitivity of 83.9%  
354 and specificity of 100% (24–26). The PHE analyses for each of these tests used  
355 previous infection (RT-PCR positive status) as a reference standard, the limitations of  
356 which are discussed above.

357

358 In the use of characterised 'known positive' and 'known negative' cohorts, one  
359 limitation of this study is its potential for spectrum bias, whereby our positive-by-two  
360 reference system may artificially raise the threshold for positive sample inclusion,  
361 possibly resulting in the overestimation of the sensitivity of any test evaluated (27).  
362 However, similar issues have been raised when using previous RT-PCR result or  
363 definitive COVID-19 symptoms as inclusion criteria given these will likely skew a  
364 cohort towards more severe disease (5). Importantly, our mixed origin of samples  
365 forming the cohort provides a positive cohort for assessing assay sensitivity that  
366 includes individuals from the general public, healthcare workers and from  
367 convalescent plasma programmes. Our analysis of specificity on only pre-pandemic  
368 individuals (n=223) shows similar specificity (99.55%) to the larger mixed 'known  
369 negative cohort' (n=488, sensitivity 99.59%). In the absence of a clear gold standard  
370 test, our system relies on no single test (each with their individual shortcomings) and  
371 instead takes an average of three.

372

373 Our assessment of the UK RTC AbC-19 LFIA using our characterised cohorts of  
374 known SARS-CoV-2 antibody positive and antibody negative plasma, in a laboratory  
375 setting shows good performance metrics for its ability to detect SARS-CoV-2 IgG  
376 antibody. We note it uses plasma from venous blood samples, as opposed to the use  
377 of a finger prick blood sample. Additionally, when this UK RTC AbC-19 LFIA was used  
378 on our cohort, a number of the positive results scored low, (1/10 using the score card  
379 under laboratory conditions, Figure 3) with a faint test band visible to a trained  
380 laboratory scientist but perhaps difficult to identify as positive by individuals performing  
381 a single test (Figure S6). This faint line may be reflective of the longer time from  
382 infection for the Northern Ireland cohort used. If this AbC-19 LFIA is to be used in

383 clinical settings it is important to determine if all users observe the same results as  
384 observed in this laboratory evaluation.

385

386 This assessment of the AbC-19 LFIA does not provide data on how this test will  
387 perform in a seroprevalence screening scenario, but instead provides metrics for the  
388 performance of the test, where presence of SARS-CoV-2 antibodies is of interest, as  
389 opposed to previous COVID-19 infection. An important potential use of the AbC-19  
390 LFIA would be in monitoring the immune response to vaccination, with most vaccines  
391 utilising SARS-CoV-2 Spike protein antigens (28). It is not yet known if presence of  
392 SARS-CoV-2 antibodies indicates immunity from infection.

393

#### 394 Conclusion

395 We present a comprehensive analysis of 880 pre-pandemic and pandemic individuals  
396 and show IgG antibodies are detectable up to 140 days from symptoms or positive  
397 RT-PCR test, showing persistence of immunity at later time points than previously  
398 published. We use antibody positive as an alternative to RT-PCR positive status as a  
399 standard for assessing SARS-CoV-2 antibody assays and show strong performance  
400 for the UK-RTC AbC-19 LFIA rapid point of care test in detecting SARS-CoV-2  
401 antibodies. It is fully understood that user experience in future studies in the real world  
402 is important and may alter the performance characteristics. Also, the effect of operator  
403 training will have direct effects upon test performance. We welcome further clinical  
404 evaluation of the AbC-19 LFIA in large cohorts of symptomatic and asymptomatic  
405 individuals alongside large studies assessing COVID-19 outcomes in individuals with  
406 longitudinal studies to fully validate its implementation across all intended use cases.

407



408

409 **Declarations**

410 **Ethics approval and consent to participate**

411 All study participants provided informed consent. This study was approved by Ulster  
412 University Institutional Ethics committee (REC/20/0043), South Birmingham REC (The  
413 PANDEMIC Study IRAS Project ID: 286041Ref 20/WM/0184) and adhered to the  
414 Declaration of Helsinki and Good Clinical Practice.

415 **Consent for publication**

416 Not applicable.

417 **Availability of data and materials**

418 The datasets used and/or analysed during the current study are available from the  
419 corresponding author on reasonable request.

420 **Competing interests:**

421 At the time of this study TM and JML acted as advisors to CIGA HealthCare, an  
422 industrial partner in the UK Rapid Test Consortium. No personal financial reward or  
423 remuneration was received for this advisory role. At the time of submission of this  
424 manuscript TM and JML no longer held these advisory positions.

425 All other authors have no potential conflict of interest to report.

426 **Funding:**

427 Costs for assays and laboratory expenses only will be paid by UK-RTC as is normal  
428 practice. The authors have not been paid or financially benefitted from this study.

429 The advisory roles within CIGA Healthcare were unpaid temporary roles. This  
430 manuscript and associated data within this paper has only been used to build  
431 confidence into the overall device design and performance assessment of the UK RTC

432 AbC-19 devices and such work was never commissioned for any government  
433 contractual consideration.

434 **Authors' contributions:**

435 TM, JML conceived the study. LR, JM and TM performed all laboratory analyses. LR,  
436 SM and KYN analysed data, KB performed all statistical analyses/interpretations and  
437 produced figures. NQ, FJ, GW and PS performed all Roche analyses and provided  
438 SHSCT cohort samples. MC, KM and SR performed all Abbott analyses and  
439 provided Blood Transfusion cohort samples. TM, RP and AN coordinated participant  
440 recruitment, consent and sampling. WB and JML developed online consent forms,  
441 questionnaires and databases. LR, JM, AK, AA, GW, DH, SS, CCS performed  
442 sample collection and processing. LR and TM wrote the manuscript, with significant  
443 contributions from JM and KB. All authors reviewed and approved the final  
444 manuscript.

445

446 **Acknowledgements:** We are extremely grateful to all the people of Northern Ireland  
447 who took part in this study and gave blood during the pandemic. We are indebted to  
448 the phlebotomists- Geraldine Horrigan and Pamela Taylor who conducted the blood  
449 draws whilst ensuring the highest possible level of safety to the participants. We are  
450 also grateful to Kingsbridge Private Hospital Group for sponsorship and providing  
451 everything needed for blood collection including the clinical rooms. We acknowledge  
452 Dr Tony Byrne for use of his laboratory and Professor Gareth Davison for laboratory  
453 space and equipment during the pandemic within a locked down University.

454

455 **References**

456

- 457 1. World Health Organisation. Rolling updates on coronavirus disease (COVID-  
458 19) [Internet]. 2020 [cited 2020 Aug 11]. Available from:  
459 [https://www.who.int/emergencies/diseases/novel-coronavirus-2019/events-as-](https://www.who.int/emergencies/diseases/novel-coronavirus-2019/events-as-they-happen)  
460 [they-happen](https://www.who.int/emergencies/diseases/novel-coronavirus-2019/events-as-they-happen)
- 461 2. Lu R, Zhao X, Li J, Niu P, Yang B, Wu H, et al. Genomic characterisation and  
462 epidemiology of 2019 novel coronavirus: implications for virus origins and  
463 receptor binding. *Lancet*. 2020 Jan 30;395.
- 464 3. Petherick A. Developing antibody tests for SARS-CoV-2. *Lancet* [Internet].  
465 2020 Apr 4 [cited 2020 Sep 12];395(10230):1101–2. Available from:  
466 [https://www.thelancet.com/journals/lancet/article/PIIS0140-6736\(20\)30788-](https://www.thelancet.com/journals/lancet/article/PIIS0140-6736(20)30788-1/fulltext#.X10EdBi-Ayk.mendeley)  
467 [1/fulltext#.X10EdBi-Ayk.mendeley](https://www.thelancet.com/journals/lancet/article/PIIS0140-6736(20)30788-1/fulltext#.X10EdBi-Ayk.mendeley)
- 468 4. Winichakoon P, Chaiwarith R, Liwsrisakun C, Salee P, Goonn A, Limsukon A,  
469 et al. Negative nasopharyngeal and oropharyngeal swabs do not rule out  
470 COVID-19. Vol. 58, *Journal of Clinical Microbiology*. American Society for  
471 Microbiology; 2020.
- 472 5. Watson J, Richter A, Deeks J. Testing for SARS-CoV-2 antibodies. *BMJ*  
473 [Internet]. 2020;370. Available from:  
474 <https://www.bmj.com/content/370/bmj.m3325>
- 475 6. Black JRM, Bailey C, Przewrocka J, Dijkstra KK, Swanton C. COVID-19: the  
476 case for health-care worker screening to prevent hospital transmission. *Lancet*  
477 (London, England) [Internet]. 2020 May 2 [cited 2020 Sep  
478 12];395(10234):1418–20. Available from:  
479 <http://www.ncbi.nlm.nih.gov/pubmed/32305073>
- 480 7. Petersen LR, Sami S, Vuong N, Pathela P, Weiss D, Morgenthau BM, et al.  
481 Lack of antibodies to SARS-CoV-2 in a large cohort of previously infected

- 482 persons. Clin Infect Dis [Internet]. 2020 Nov 4; Available from:  
483 <https://doi.org/10.1093/cid/ciaa1685>
- 484 8. Long Q-X, Tang X-J, Shi Q-L, Li Q, Deng H-J, Yuan J, et al. Clinical and  
485 immunological assessment of asymptomatic SARS-CoV-2 infections. Nat Med  
486 [Internet]. 2020;26(8):1200–4. Available from: [https://doi.org/10.1038/s41591-](https://doi.org/10.1038/s41591-020-0965-6)  
487 [020-0965-6](https://doi.org/10.1038/s41591-020-0965-6)
- 488 9. Daniel WW. Biostatistics : a foundation for analysis in the health sciences. 7th  
489 Editio. New York: John Wiley & Sons, Ltd; 1999. 720 p.
- 490 10. Medicines and Healthcare product Regulatory Agency. Target product profile:  
491 antibody tests to help determine if people have immunity to SARS-CoV-2  
492 [Internet]. 2020 [cited 2020 Apr 24]. Available from:  
493 [https://assets.publishing.service.gov.uk/government/uploads/system/uploads/a](https://assets.publishing.service.gov.uk/government/uploads/system/uploads/attachment_data/file/881162/Target_Product_Profile_antibody_tests_to_help_determine_if_people_have_immunity_to_SARS-CoV-2_Version_2.pdf)  
494 [ttachment\\_data/file/881162/Target\\_Product\\_Profile\\_antibody\\_tests\\_to\\_help\\_d](https://assets.publishing.service.gov.uk/government/uploads/system/uploads/attachment_data/file/881162/Target_Product_Profile_antibody_tests_to_help_determine_if_people_have_immunity_to_SARS-CoV-2_Version_2.pdf)  
495 [etermine\\_if\\_people\\_have\\_immunity\\_to\\_SARS-CoV-2\\_Version\\_2.pdf](https://assets.publishing.service.gov.uk/government/uploads/system/uploads/attachment_data/file/881162/Target_Product_Profile_antibody_tests_to_help_determine_if_people_have_immunity_to_SARS-CoV-2_Version_2.pdf)
- 496 11. The R Development Core Team. R: A language and environment for statistical  
497 computing. ISBN 3-900051-07-0. 2017.
- 498 12. Wickham H. ggplot2 Elegant Graphics for Data Analysis. Springer. 2016.
- 499 13. Rosadas C, Randell P, Khan M, McClure MO, Tedder RS. Testing for  
500 responses to the wrong SARS-CoV-2 antigen? Lancet (London, England)  
501 [Internet]. 2020 Sep 5 [cited 2020 Sep 13];396(10252):e23. Available from:  
502 <http://www.ncbi.nlm.nih.gov/pubmed/32866429>
- 503 14. UK-RTC and Abingdon Health. Charting the course to a post-COVID world.  
504 2020.
- 505 15. Mulchandani R, Jones HE, Taylor-Phillips S, Shute J, Perry K, Jamarani S, et  
506 al. Accuracy of UK Rapid Test Consortium (UK-RTC) “AbC-19 Rapid Test” for

- 507 detection of previous SARS-CoV-2 infection in key workers: test accuracy  
508 study. *BMJ* [Internet]. 2020 Nov 11;371:m4262. Available from:  
509 <http://www.bmj.com/content/371/bmj.m4262.abstract>
- 510 16. Gudbjartsson DF, Norddahl GL, Melsted P, Gunnarsdottir K, Holm H,  
511 Eythorsson E, et al. Humoral Immune Response to SARS-CoV-2 in Iceland. *N*  
512 *Engl J Med* [Internet]. 2020 Sep 1; Available from:  
513 <https://doi.org/10.1056/NEJMoa2026116>
- 514 17. Surkova E, Nikolayevskyy V, Drobniewski F. False-positive COVID-19 results:  
515 hidden problems and costs. *Lancet Respir Med* [Internet]. 2020 Nov 11;  
516 Available from: [https://doi.org/10.1016/S2213-2600\(20\)30453-7](https://doi.org/10.1016/S2213-2600(20)30453-7)
- 517 18. Mulchandani R, Taylor-Phillips S, Jones H, Ades T, Borrow R, Linley E, et al.  
518 Self assessment overestimates historical COVID-19 disease relative to  
519 sensitive serological assays: cross sectional study in UK key workers.  
520 *medRxiv* [Internet]. 2020 Jan 1;2020.08.19.20178186. Available from:  
521 <http://medrxiv.org/content/early/2020/08/22/2020.08.19.20178186.abstract>
- 522 19. Iyer AS, Jones FK, Nodoushani A, Kelly M, Becker M, Slater D, et al.  
523 Persistence and decay of human antibody responses to the receptor binding  
524 domain of SARS-CoV-2 spike protein in COVID-19 patients. *Sci Immunol*  
525 [Internet]. 2020 Oct 8;5(52):eabe0367. Available from:  
526 <http://immunology.sciencemag.org/content/5/52/eabe0367.abstract>
- 527 20. Andraud M, Lejeune O, Musoro JZ, Ogunjimi B, Beutels P, Hens N. Living on  
528 Three Time Scales: The Dynamics of Plasma Cell and Antibody Populations  
529 Illustrated for Hepatitis A Virus. Fraser C, editor. *PLoS Comput Biol* [Internet].  
530 2012 Mar 1 [cited 2020 Sep 28];8(3):e1002418. Available from:  
531 <https://dx.plos.org/10.1371/journal.pcbi.1002418>

- 532 21. Wu L-P, Wang N-C, Chang Y-H, Tian X-Y, Na D-Y, Zhang L-Y, et al. Duration  
533 of antibody responses after severe acute respiratory syndrome. *Emerg Infect*  
534 *Dis* [Internet]. 2007 Oct;13(10):1562–4. Available from:  
535 <https://pubmed.ncbi.nlm.nih.gov/18258008>
- 536 22. Iyer AS, Jones FK, Nodoushania A, Kelly M, Becker M, Slater D, et al.  
537 Dynamics and significance of the antibody response to SARS-CoV-2 infection.  
538 *medRxiv* [Internet]. 2020 Jan 1;2020.07.18.20155374. Available from:  
539 <http://medrxiv.org/content/early/2020/07/20/2020.07.18.20155374.abstract>
- 540 23. Addetia A, Crawford KHD, Dingens A, Zhu H, Roychoudhury P, Huang M, et  
541 al. Neutralizing antibodies correlate with protection from SARS-CoV-2 in  
542 humans during a fishery vessel outbreak with high attack rate. *medRxiv*  
543 [Internet]. 2020 Jan 1;2020.08.13.20173161. Available from:  
544 <http://medrxiv.org/content/early/2020/08/14/2020.08.13.20173161.abstract>
- 545 24. Public Health England. Evaluation of the Abbott SARS-CoV-2 IgG for the  
546 detection of anti-SARSCoV-2 antibodies [Internet]. 2020. Available from:  
547 [https://assets.publishing.service.gov.uk/government/uploads/system/uploads/a](https://assets.publishing.service.gov.uk/government/uploads/system/uploads/attachment_data/file/890566/Evaluation_of_Abbott_SARS_CoV_2_IgG_PHE.pdf)  
548 [ttachment\\_data/file/890566/Evaluation\\_of\\_Abbott\\_SARS\\_CoV\\_2\\_IgG\\_PHE.pdf](https://assets.publishing.service.gov.uk/government/uploads/system/uploads/attachment_data/file/890566/Evaluation_of_Abbott_SARS_CoV_2_IgG_PHE.pdf)  
549 [f](https://assets.publishing.service.gov.uk/government/uploads/system/uploads/attachment_data/file/890566/Evaluation_of_Abbott_SARS_CoV_2_IgG_PHE.pdf)
- 550 25. Public Health England. Evaluation of the Euroimmun Anti-SARS-CoV-2 ELISA  
551 (IgG) serology assay for the detection of anti-SARS-CoV-2 antibodies  
552 [Internet]. 2020. Available from:  
553 [https://assets.publishing.service.gov.uk/government/uploads/system/uploads/a](https://assets.publishing.service.gov.uk/government/uploads/system/uploads/attachment_data/file/893433/Evaluation_of_Euroimmun_SARS_CoV_2_ELISA_IgG__1_.pdf)  
554 [ttachment\\_data/file/893433/Evaluation\\_of\\_Euroimmun\\_SARS\\_CoV\\_2\\_ELISA\\_](https://assets.publishing.service.gov.uk/government/uploads/system/uploads/attachment_data/file/893433/Evaluation_of_Euroimmun_SARS_CoV_2_ELISA_IgG__1_.pdf)  
555 [IgG\\_\\_1\\_.pdf](https://assets.publishing.service.gov.uk/government/uploads/system/uploads/attachment_data/file/893433/Evaluation_of_Euroimmun_SARS_CoV_2_ELISA_IgG__1_.pdf)
- 556 26. Public Health England. Evaluation of Roche Elecsys AntiSARS-CoV-2

557 serology assay for the detection of anti-SARS-CoV-2 antibodies. 2020.

558 27. Hall MK, Kea B, Wang R. Recognising Bias in Studies of Diagnostic Tests Part  
559 1: Patient Selection. *Emerg Med J* [Internet]. 2019/07/13. 2019 Jul;36(7):431–  
560 4. Available from: <https://pubmed.ncbi.nlm.nih.gov/31302605>

561 28. Jeyanathan M, Afkhami S, Smalls F, Miller MS, Lichty BD, Xing Z.  
562 Immunological considerations for COVID-19 vaccine strategies. *Nat Rev*  
563 *Immunol* [Internet]. 2020;20(10):615–32. Available from:  
564 <https://doi.org/10.1038/s41577-020-00434-6>

565

566

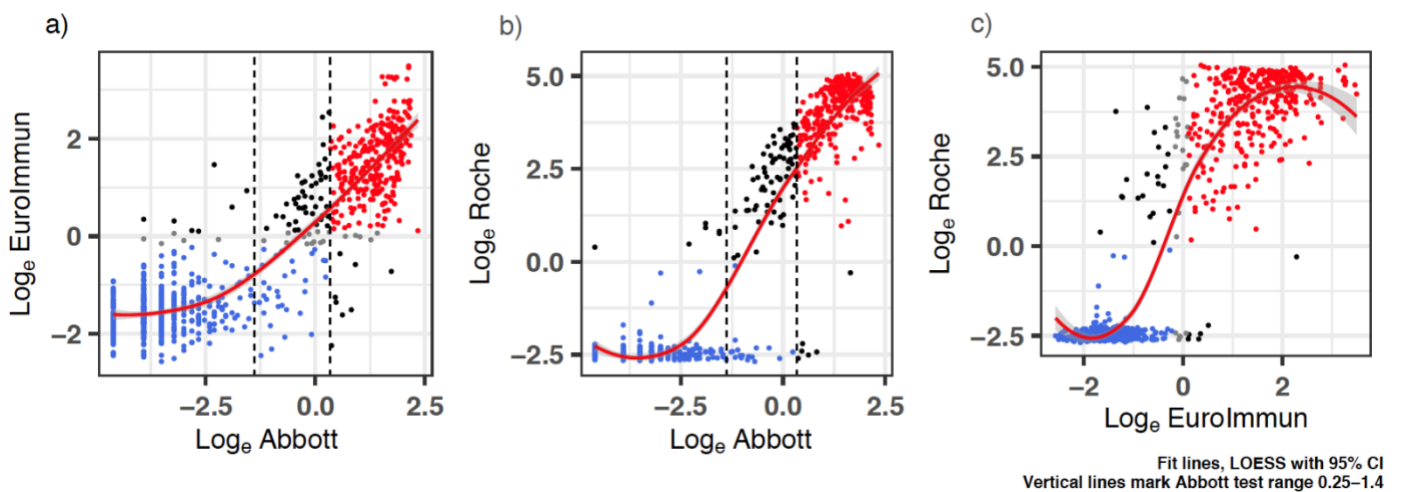
567 **Table 1: UK-RTC AbC-19 LFIA performance metrics against known antibody**  
 568 **positive and known antibody negative cohorts.**

Total Negative	True Negative	False Positive	Total Positive	True Positive	False Negative	Sensitivity % (95 CI)	Specificity % (95 CI)
<b>Pre-pandemic (n=223)</b>							
223	222	1	n/a	n/a	n/a	n/a	99.55% (97.53% to 99.99%)
<b>Initially reported cohorts (n=654)</b>							
350	350	0	304	297	7	97.70% (95.31%-99.07%)	100.00% (98.95%-100.00%)
<b>Extended cohorts (n=818)</b>							
488	486	2	330	322	8	97.58% (95.28%-98.95%)	99.59% (98.53%-99.95%)

569

570

571 **Figures**

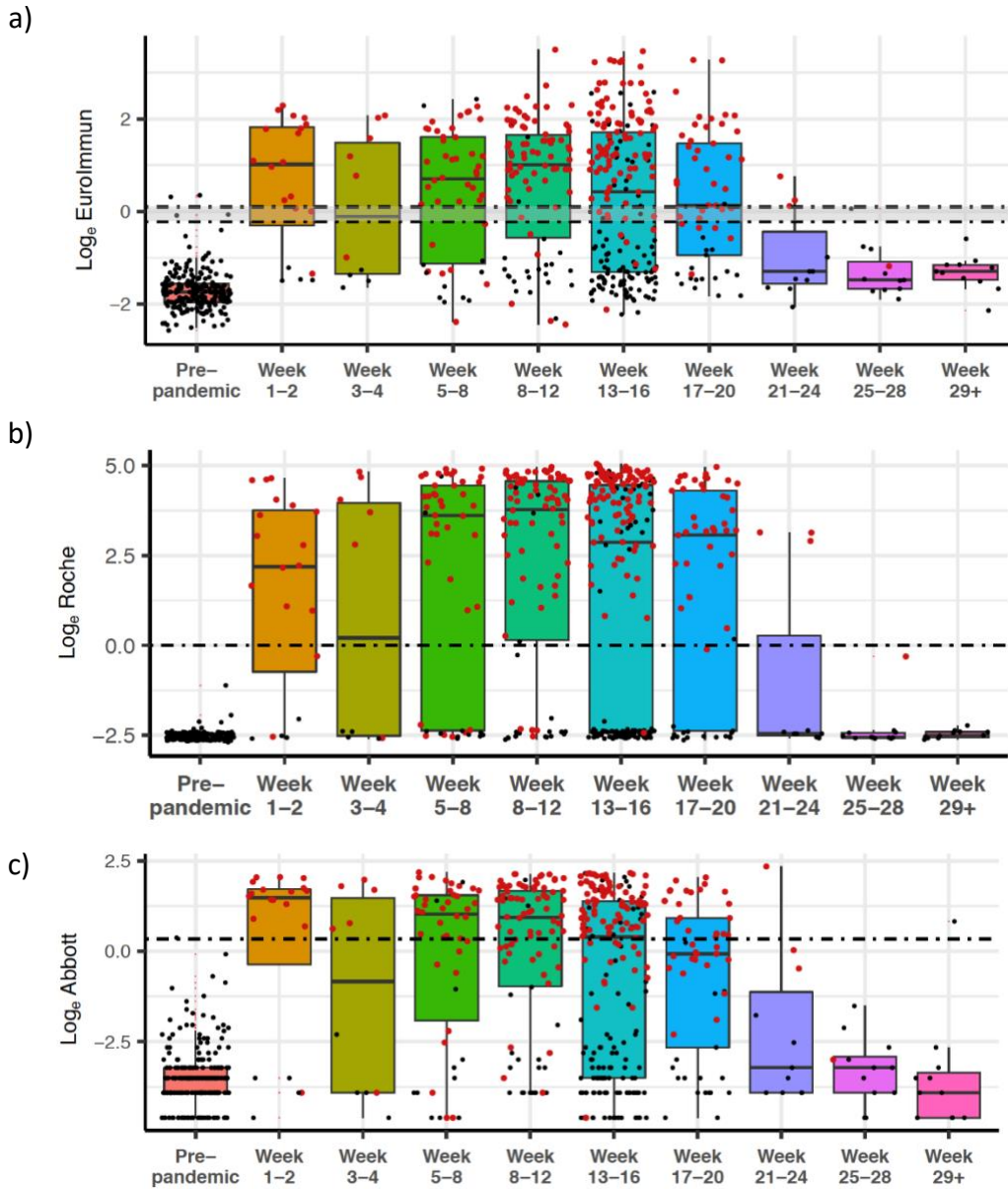


- Category**
- Both negative
  - Both positive
  - Disagreement
  - EuroImmun borderline

575



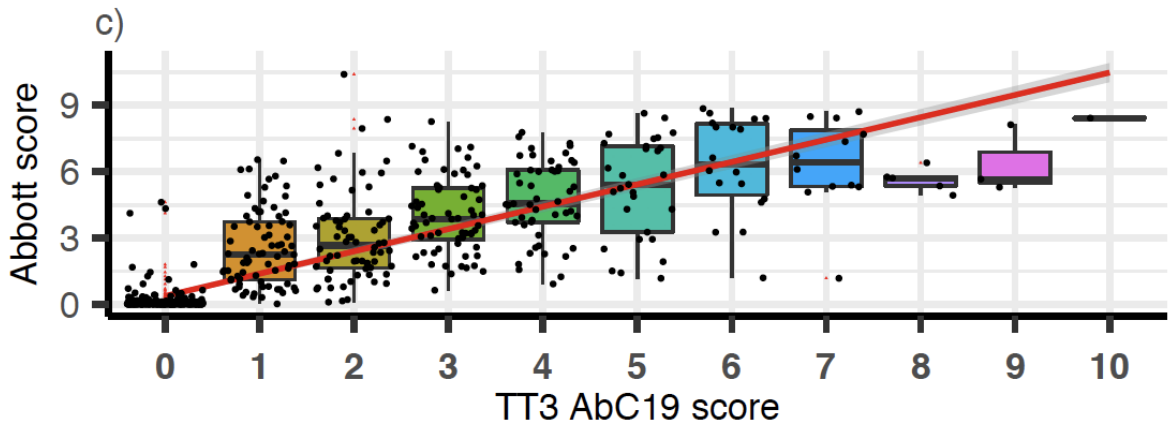
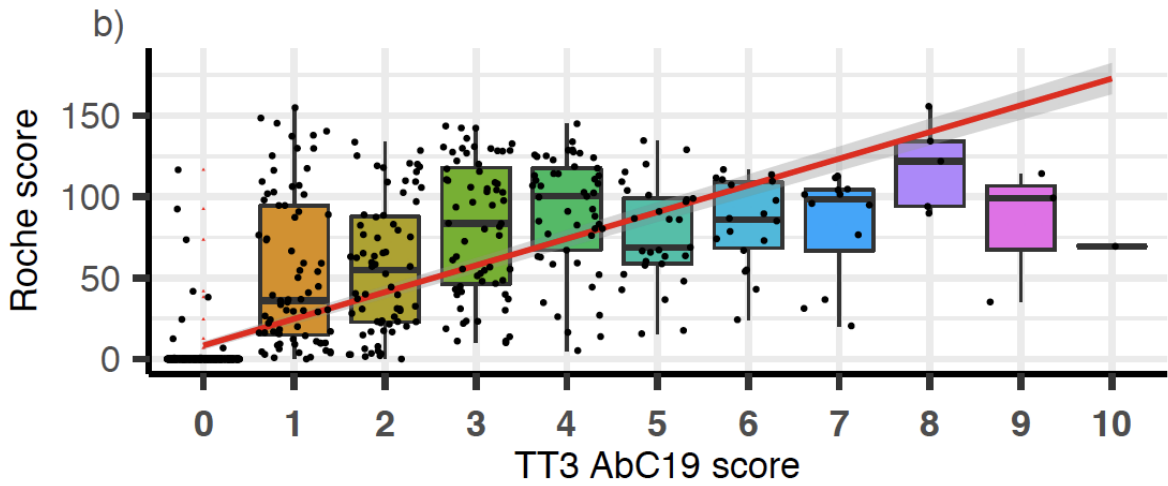
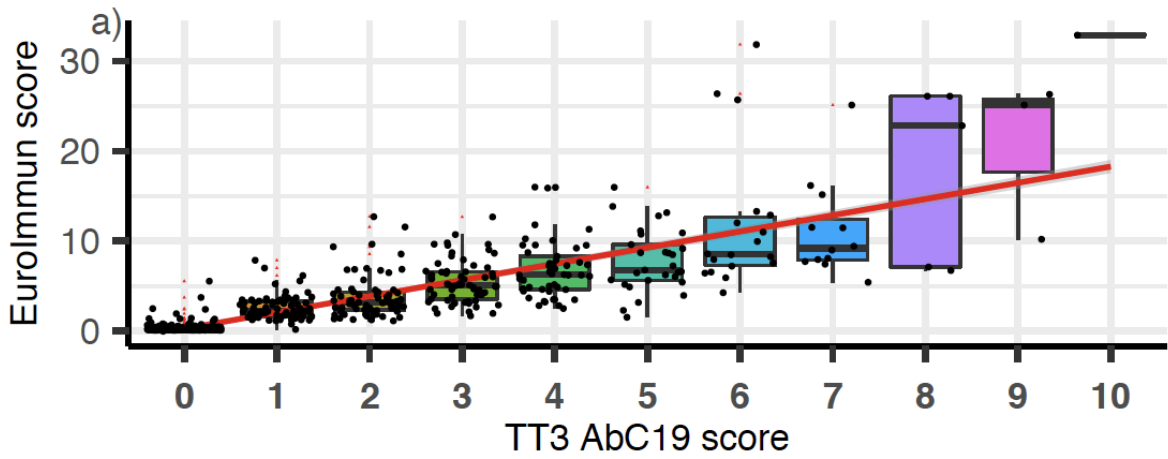
576 **Figure 1: Two-way correlation scatter plots comparing a) EuroImmuno b) Abbott**  
577 **and c) Roche immunoassays.** Pearson  $\chi^2$  test was used to assess correlations. The  
578 results for each test were log transformed to ensure results follow a normal distribution.  
579 Negative agreement shown as blue dots, red dots show positive agreement for the  
580 two immunoassays, whilst black dots show disagreement and grey dots as the  
581 EuroImmuno borderline results. Vertical lines mark the Abbott test range 0.25-1.4.  
582 n=880. The graphs show positive correlations between all immunoassays evaluated,  
583 with the fewest disagreement of results between the Log of Roche and the Log of  
584 EuroImmuno. Fit lines LOESS, with 95% confidence interval shaded.  
585



d)

	Ratio Antibody level : assay positivity cut-off									
	Pre-2020	1-2	3-4	5-8	8-12	13-16	17-20	21-24	25-28	29+
<b>EuroImmun</b>	-2.65	1.33	0.2	0.87	1.32	0.47	0.04	-2.01	-2.26	-2.01
<b>Roche</b>	-3.64	3.16	3.05	5.21	5.45	4.14	4.42	-3.54	-3.69	-3.61
<b>Abbott</b>	-5.54	1.64	-0.51	0.99	0.86	0.08	-0.59	-5.13	-5.13	-6.13
<b>Sample number (n=)</b>	223	20	10	50	90	202	53	11	12	11

587 **Figure 2: SARS-CoV-2 antibody levels by (a) EuroImmun, (b) Roche, and (c)**  
588 **Abbott, relative to weeks since first reported symptoms or positive PCR result**  
589 **(where data available, n=682).** RT-PCR positive individuals are denoted by red dots,  
590 while individuals with time since symptom data are denoted in black. Dashed lines  
591 delineate  $\log_e$  equivalent of positivity threshold (EuroImmun 1.1, Roche 1.0, Abbott  
592 1.4) for each test, and the negativity threshold for EuroImmun (0.8; borderline result  
593 between the two lines). Black bars indicate median, within IQR (interquartile range)  
594 boxes for EuroImmun/Roche/Abbott value. Red triangles indicate outliers, based on  
595  $1.5 \times$  IQR (interquartile range). **(d)** Antibody level ratios for assays over time show  
596 varying peaks levels depending on test. Calculated by first establishing the median  
597 per time period, then calculating  $\log_2$  ratio for each period versus each respective  
598 assay positivity cut-off.  
599



Linear fit line with 95% CI

600

601

602

603

604

605

606 **Figure 3: AbC-19 extended cohort (n=818) correlation to a) EuroImmun b) Roche**  
607 **and c) Abbott scores.** Box plots overlaid on scatter plot, comparing AbC-19 test  
608 scores to EuroImmun, Roche and Abbott quantitative antibody values. Red linear line  
609 of best fit with 95% confidence interval shaded in grey. Black bars indicate median,  
610 within IQR (interquartile range) boxes for EuroImmun/Roche/Abbott value. Red  
611 triangles indicate outliers, based on  $1.5 \times$  IQR (interquartile range).