

# 1 **Altered EEG markers of synaptic plasticity in a human model of** 2 **NMDA receptor deficiency: anti-NMDA receptor encephalitis**

3

4 **Abbreviated title:** altered sleep EEG in anti-NMDAR encephalitis

5

6 Silvano R. Gefferie<sup>a,b</sup> \*, Angelina Maric<sup>c\*</sup>, Hanne Critelli<sup>a</sup>, Sophie Gueden<sup>d</sup>, Gerhard  
7 Kurlermann<sup>e</sup>, Salome Kurth<sup>f,g</sup>, Margherita Nosadini<sup>h</sup>, Barbara Plecko<sup>i,a</sup>, Maya Ringli<sup>j</sup>, Kevin  
8 Rostásy<sup>k</sup>, Stefano Sartori<sup>h</sup>, Bernhard Schmitt<sup>a</sup>, Agnese Suppiej<sup>l,h</sup>, Patrick Van Bogaert<sup>d</sup>, Flavia  
9 M. Wehrle<sup>m,n</sup>, Reto Huber<sup>m,o</sup>, Bigna K. Böslsterli<sup>a</sup>

10 \* These authors contributed equally to this work.

11

12 *Affiliations:*

13 <sup>a</sup> Department of Neuropediatrics and Children's Research Center, University Children's  
14 Hospital Zurich, 8032, Zurich, Switzerland

15 <sup>b</sup> Stichting Epilepsie Instellingen Nederland (SEIN), 2103 SW, Heemstede, The Netherlands

16 <sup>c</sup> Department of Neurology, University Hospital Zurich, University of Zurich, 8091, Zurich,  
17 Switzerland

18 <sup>d</sup> Service de Pédiatrie, CHU d'Angers, 49933, Angers, France

19 <sup>e</sup> Children's Hospital Bonifatius Klinik, 49808, Lingen, Germany

20 <sup>f</sup> Pulmonary Clinic, University Hospital Zurich, 8091, Zurich, Switzerland

21 <sup>g</sup> Department of Psychology, University of Fribourg, 1700, Fribourg, Switzerland

22 <sup>h</sup> Pediatric Neurology and Neurophysiology Unit, Department of Women's and Children's  
23 Health, University of Padua, 35122, Padua, Italy

24 <sup>i</sup> Department of Pediatrics and Adolescent Medicine, Division of General Pediatrics, Medical  
25 University of Graz, 8036, Graz, Austria

26 <sup>j</sup> Department of Neurology, Inselspital, University Hospital Bern, 3010, Bern, Switzerland

27 <sup>k</sup> Department of Pediatric Neurology, Children's Hospital Datteln, Witten/Herdecke  
28 University, 58448, Datteln/Witten, Germany

29 <sup>l</sup> Department of Medical Sciences, Pediatric Section, University of Ferrara, 44121, Ferrara,  
30 Italy

31 <sup>m</sup> Child Development Center, University Children's Hospital Zurich, 8032, Zurich,  
32 Switzerland

33 <sup>n</sup> Department of Neonatology and Pediatric Intensive Care, University Children's Hospital  
34 Zurich, 8032, Zurich, Switzerland

35 <sup>o</sup> Department of Child and Adolescent Psychiatry and Psychotherapy, Psychiatric Hospital,  
36 University of Zurich, 8091, Zurich, Switzerland

37

38 **Corresponding author:**

39 Bigna K. Bölsterli

40 University Children's Hospital Zurich

41 Department of Neuropediatrics

42 Steinwiesstrasse 75

43 8032 Zurich

44 Switzerland

45 Phone ++41 (0)44 266 75 92

46 Fax ++41 (0)44 266 71 65

47 [bigna.boelsterli@kispi.uzh.ch](mailto:bigna.boelsterli@kispi.uzh.ch)

48

49 **Number of pages: 49**

50

51 **Number of figures and tables**

52 Figures: 5

53 Table: 3

54

55 **Number of words (including references)**

56 Abstract: 365

57 Introduction: 603

58 Discussion: 1780

59

60 **Declaration of interest:**

61 None

62

63

## 64 Abstract

65 Plasticity of synaptic strength and density is a vital mechanism enabling memory  
 66 consolidation, learning, and neurodevelopment. It is strongly dependent on the intact function  
 67 of N-methyl-D-aspartate receptors (NMDAR). The importance of NMDAR is further evident  
 68 as their dysfunction is involved in many diseases such as schizophrenia, Alzheimer's disease,  
 69 neurodevelopmental disorders, and epilepsies. Synaptic plasticity is thought to be reflected by  
 70 changes of sleep slow wave slopes across the night, namely higher slopes after wakefulness at  
 71 the beginning of sleep than after a night of sleep. Hence, a functional NMDAR deficiency  
 72 should theoretically lead to altered overnight changes of slow wave slopes. Here we  
 73 investigated whether pediatric patients with anti-NMDAR encephalitis, being a very rare but  
 74 unique human model of NMDAR deficiency due to autoantibodies against receptor subunits,  
 75 indeed show alterations in this sleep EEG marker for synaptic plasticity.

76 We retrospectively analyzed 12 whole-night EEGs of 9 patients (age 4.3-20.8 years, 7  
 77 females) and compared them to a control group of 45 healthy individuals with the same age  
 78 distribution. Slow wave slopes were calculated for the first and last hour of non-rapid eye  
 79 movement (NREM) sleep (factor 'hour') for patients and controls (factor 'group'). There was  
 80 a significant interaction between 'hour' and 'group' ( $p = 0.013$ ), with patients showing a  
 81 smaller overnight decrease of slow wave slopes than controls. Moreover, we found smaller  
 82 slopes during the first hour in patients ( $p = 0.022$ ), whereas there was no group difference  
 83 during the last hour of NREM sleep ( $p = 0.980$ ). Importantly, the distribution of sleep stages  
 84 was not different between the groups, and in our main analyses of patients without severe  
 85 disturbance of sleep architecture, neither was the incidence of slow waves. These possible  
 86 confounders could therefore not account for the differences in the slow wave slope values,  
 87 which we also saw in the analysis of the whole sample of EEGs. These results suggest that  
 88 quantitative EEG analysis of slow wave characteristics may reveal impaired synaptic

89 plasticity in patients with anti-NMDAR encephalitis, a human model of functional NMDAR  
 90 deficiency. Thus, in the future, the changes of sleep slow wave slopes may contribute to the  
 91 development of electrophysiological biomarkers of functional NMDAR deficiency and  
 92 synaptic plasticity in general.

93

## 94 **Keywords**

95 *NMDA receptor, encephalitis, synaptic plasticity, slow waves, sleep homeostasis.*

96

## 97 **Highlights**

- 98 • Changes of slow waves in overnight EEGs are thought to reflect synaptic plasticity.
- 99 • Synaptic plasticity is strongly dependent on intact NMDAR function.
- 100 • Antibody-mediated NMDAR deficiency occurs in patients with anti-NMDAR
- 101 encephalitis.
- 102 • In this human model of NMDAR deficiency, we found altered slow wave changes.
- 103 • Sleep EEG measures may mark NMDAR-related impairments of synaptic plasticity.

## 1. Introduction

N-methyl-D-aspartate receptors (NMDAR) are a class of ionotropic glutamate receptors ubiquitously distributed throughout the central nervous system. Due to their importance, it is not surprising that a dysfunction of NMDAR is involved in many diseases such as schizophrenia (Tsai and Coyle, 2002), Alzheimer's disease (Zhang et al., 2016), and epilepsies and neurodevelopmental disorders (Burnashev and Szepietowski, 2015). NMDAR are primarily known for their pivotal role in long-term synaptic plasticity (Dupuis et al., 2014; Escobar et al., 1998). Synaptic plasticity involves behavior-dependent synaptic potentiation during wakefulness, being the basic mechanism of learning, and behavior-independent renormalization of synaptic strength and density during sleep, which has been hypothesized to ensure synaptic homeostasis (Tononi and Cirelli, 2014). Various studies suggested that the processes that underlie synaptic plasticity and homeostasis, i.e. changes in net synaptic strength and synaptic density, are reflected by changes of sleep slow wave (0.5 – 4Hz) characteristics measured in the surface EEG (Esser et al., 2007; Riedner et al., 2007; Vyazovskiy et al., 2009).

Slow waves stem from (near) synchronous activity of large populations of cortical neurons (Esser et al., 2007; Vyazovskiy et al., 2009), which has been related to the strength of synaptic connections (Esser et al., 2007). They are most prominent in non-rapid eye movement (NREM) sleep and can be characterized by various parameters such as incidence, power, amplitude, and slope (Esser et al., 2007). Of these, the slope has been suggested to be the preferred EEG marker for cortical synchrony, being the closest reflection of synaptic strength (Riedner et al., 2007; Vyazovskiy et al., 2009). Accordingly, changes of slow wave slopes from the first hour (FH) to the last hour (LH) of NREM sleep have been used to indirectly measure synaptic plasticity (Bölsterli et al., 2011; Fattinger et al., 2015). This typically results in steeper slopes of slow waves at the beginning of sleep because of synaptic

potentiation during previous wakefulness and a homeostatic decrease of slow wave slopes across the night (Riedner et al., 2007).

The analysis of sleep slow waves has indicated that synaptic plasticity may be challenged in various conditions, including major depressive disorder (Armitage et al., 2000), encephalopathy with status epilepticus during sleep (ESES) (Bölsterli et al., 2011) and infantile spasms (Fattinger et al., 2015). Since synaptic plasticity requires properly functioning NMDAR, a dysfunction would expectably result in altered changes of slow wave characteristics during a night's sleep. Such a functional NMDAR deficiency may emerge in different ways, for example by interventions such as gene editing and receptor antagonism (Campbell and Feinberg, 1996; Miyamoto et al., 2003), or by antibodies against the NMDAR as seen in anti-NMDAR encephalitis.

Anti-NMDAR encephalitis is a well-recognized but very rare disease due to autoantibodies against the NR1-subunit of NMDAR (Dalmau et al., 2008, 2007). Anti-NMDAR antibodies disturb receptor functionality by cross-linking them, which leads to their internalization into neurons, causing a functional NMDAR deficiency (Hughes et al., 2010). Accordingly, such patients constitute a human model of NMDAR deficiency, which suggests that the receptors' role in synaptic plasticity is impaired.

In this retrospective, multicenter, case-control study, we hypothesized that the changes of slow wave slopes across the night in pediatric patients with anti-NMDAR encephalitis, representing a human model of NMDAR deficiency, are altered, i.e. show diminished patterns of change. To this end, we compared changes of slow wave slopes from the FH to the LH of NREM sleep between patients and healthy controls of corresponding age. To rule out that differences in other sleep variables such as sleep stage distributions or the mere counts of

152 slow waves would drive group differences in slow wave slopes, we additionally compared  
153 these variables between the groups.



## 2. Materials and Methods

### 2.1. Participants

Patients diagnosed with anti-NMDAR encephalitis were provided by the Department of Neuropediatrics, University Children's Hospital Zurich (Switzerland); the Department for Women's and Children's Health, Pediatric Neurology and Neurophysiology Unit, University of Padua (Italy); the Department of Pediatric Neurology, Children's Hospital Datteln, University Witten/Herdecke (Germany); the University Hospital Muenster, Westfalian Wilhelms University (Germany); and the Service de Pédiatrie, CHU d'Angers (France). Twenty-one EEGs from thirteen patients (ten females) recorded between 2008 and 2019 were available. We included patients that met all the following inclusion criteria:

- Detection of anti-NMDAR antibodies in serum and/or cerebrospinal fluid
- At least one whole-night sleep-EEG recording of sufficing data quality and without highly pathological changes that allowed scoring of sleep stages
- Under the age of 21 years at the time of EEG recording

Nine EEGs from nine patients had to be excluded because of the following reasons: inability to score sleep stages, for example due to excessive artifacts (six EEGs); the EEG not being a whole-night registration (one EEG); incompleteness of the EEG (one EEG); and a lack of sleep during the recording (one EEG). Consequently, we included 12 whole-night EEGs from 9 patients (7 females, age 4.3 – 20.8 years, mean 12.3 years) at different stages of their disease. Clinical and electrographic characteristics of included patients are provided in Table 1 and Supplementary Table 1.

[Insert Table 1]

As representative references for each patient, we included five healthy controls with one whole-night EEG recording from studies conducted between 2008 and 2019 by the research

group of Reto Huber from the University Children's Hospital Zurich (Kurth et al., 2012; Wehrle et al., 2017; Volk et al., 2019; unpublished observations). Age-wise, these controls differed at most 1.1 years from the corresponding patient, resulting in an age distribution in controls (age 4.2 - 21.4 years, mean 12.4 years) that was comparable to that in patients. This procedure was carried out to avoid that age-related differences in sleep slow wave characteristics could eventually drive differences between patients and controls (Kurth et al., 2010b). Moreover, the sex of controls was matched for all but one patient. For this young male patient (7.4 years), we included three male and two female controls, as no more data of male controls in that age range were available. Importantly, sex influences on sleep parameters are thought to be minimal before puberty (Johnson et al., 2006; Knutson, 2005).

This study was performed at the University Children's Hospital Zurich. All participants or their legal representatives gave written informed consent for the use of their non-identifiable, health-related data for research purposes – acknowledged by their local authorities. Ethical approval was provided by the ethical committee of the canton of Zurich (BASEC Nr. 2016-02154).

## 2.2. EEG recordings

The recordings from the patients in Zurich were performed using a Neurofile XP EEG System (Natus Europe GmbH, Munich, Germany), with 19 electrodes according to the international 10-20 system. Their EEG data were analogously band-pass filtered (0.016 – 300 Hz), saved at 256 Hz and then digitally band-pass filtered (0.53 – 70 Hz). At the Children's Hospital Datteln, a Neurofax EEG-9210 System (Berger Medizintechnik GmbH, Gleisdorf, Österreich) was used. The signals were stored at 200 Hz and digitally band-pass filtered (0.53 – 70 Hz). At the Pediatric Clinical Hospital of Padua, EEG data were acquired with Galileo NT Software (EB Neuro S.p.A, Florence, Italy), analogously wide-band filtered (0 – 20 kHz) and

consequently saved at 256 Hz. The EEGs from the University Hospital Angers were registered with a Deltamed Brainbox-1042 EEG amplifier (Natus Europe GmbH, Munich, Germany), stored at 256 Hz, and digitally high- and low-pass filtered at 0.17 Hz and 100 Hz, respectively. The EEGs from patients in Angers, Datteln and Padua had at least eight EEG electrodes placed on 10-20-positions. The six common electrodes among all EEGs were O1, O2, Fp1, Fp2 and temporal electrodes (either T3 and T4, or T5 and T6). The EEGs from Münster were excluded due to excessive artifacts.

To avoid inter-rater variability, all sleep stage scoring for patients was done by a single, trained EEG technician (H.C.) according to the standard criteria from the American Association of Sleep Medicine (AASM) (Iber et al., 2007), applied to 20-sec epochs.

EEGs for controls were recorded using a 128-channels high-density EEG system (Electrical Geodesics, Inc.; Sensor Net for long-term monitoring). The data were sampled at 500 Hz (analogously filtered between 0.01 and 200 Hz) and then digitally band-pass filtered (0.5 – 50 Hz). Scoring was done by investigators of the original studies (Kurth et al., 2012; Wehrle et al., 2017; Volk et al., 2019; unpublished observations) according to the guidelines from the AASM (Iber et al., 2007), applied to 20-sec epochs.

### **2.3. EEG analyzes**

After acquisition and scoring of all patient and control EEG recordings, data were further analyzed in MATLAB R2017b (The MathWorks, Inc., Natick, MA). All EEGs were downsampled to 128 Hz, after which semi-automatic artifact detection was performed as described in (Lustenberger et al., 2015). Channels containing artifacts in more than 5% of all 20-sec epochs were excluded from further analysis. The recordings were then re-referenced to the average of O1 and O2, as these electrodes were available for all EEG recordings and slow

wave activity (SWA) is typically most prominent in anterior regions in the age range of the investigated participants (Werth et al., 1997; Finelli et al., 2001; Kurth et al., 2010b, 2012).

A slow wave detection algorithm based on the method first described by (Riedner et al., 2007) was used for the detection of slow waves. EEG signals from all derivations were band-pass filtered (0.5 – 4.0 Hz, stopband 0.1 and 10 Hz) using a Chebyshev Type II filter (MATLAB, The MathWorks Inc, Natick, MA). Maximal attenuation in the passband was 3 dB and minimal attenuation in the stopband was 10 dB. Negative deflections of the EEG signal were depicted as ‘negative half-waves’. Negative half-waves with an interval of 0.25 to 1.0 seconds between the zero-crossings, i.e. wave frequency 0.5 – 2 Hz, were considered slow waves. These were detected in all artifact-free epochs of NREM sleep. Then, slow waves occurring in the first and last hour of NREM sleep were selected for slope analyzes, as has been performed in previous pathological and physiological pediatric data (Bölsterli et al., 2011; Fattinger et al., 2015; Kurth et al., 2016). Slopes of slow waves were calculated by dividing the amplitude of the most negative deflection by the interval until the next zero-crossing (Kurth et al., 2010a) (Fig. 1). Subsequently, they were corrected for amplitude as described in earlier work by calculating their value at the amplitude of 75  $\mu$ V (further termed ‘slope’), because amplitude and slope are inherently correlated (Bölsterli et al., 2017, 2011; Bölsterli Heinzle et al., 2014). Furthermore, numbers of detected slow waves were determined for the FH of NREM sleep, LH of NREM sleep, and for the total time spent in NREM sleep, i.e. from the first to the last EEG epoch scored as NREM sleep. Mean slopes and numbers of detected slow waves were calculated for electrodes Fp1, Fp2, T3 or T5, and T4 or T6 (dependent on availability). In a second step, these values were averaged across these electrodes. The absolute and relative (i.e. with respect to the total sleep time) durations of sleep stages were calculated based on sleep stage-scored EEG epochs.

[Insert Figure 1 (2 column-fitting)]

## 2.4. Statistical analysis

Statistics were conducted with IBM SPSS Statistics (IBM Corp. Released 2017. IBM SPSS Statistics for Windows, Version 25.0. Armonk, NY: IBM Corp.). The one patient (#5) in whom the EEG was recorded clearly after clinical recovery, i.e. 4 years after the last manifestation of active disease, was excluded from quantitative statistical analysis. The corresponding slow wave analysis results were merely described qualitatively. In the statistical analysis, we included only those patient EEG recordings for which clinicians evaluated the hypnograms as normal, to eliminate influences of pathological sleep architecture on potential group differences in slow wave characteristics. This left 6 patients with 8 EEGs for statistical comparison to 30 controls. For each patient with two consecutive EEGs (designated EEG 'A' and 'B', respectively), ages at time of recording (2 to 10 weeks apart) and EEG analysis outcomes were averaged before any further analysis. Subsequently, statistical analysis was repeated, including also the patients and EEGs that showed pathologically fragmented sleep as described above. The results thereof are only reported in detail if they deviated from those previously reported.

For the analysis of slow wave slope variables between the two groups of participants, a 2x2 mixed ANOVA was performed with the within-subject factor 'hour' (FH vs. LH) and the between-subject factor 'group' (patients vs. controls). Standardized residuals were checked for the assumption of normal distribution (Shapiro-Wilk test). Following a significant interaction, we performed a priori defined post hoc tests, i.e. two-tailed independent samples *t*-tests, comparing slopes during the FH and the LH between patients and controls, with Bonferroni correction for multiple comparisons (realized by multiplying *p*-values by the number of post hoc comparisons). In case residuals of the mixed ANOVA were deviating from a normal distribution, pairwise non-parametric procedures (two-tailed Mann-Whitney *U*-tests) with Bonferroni correction for multiple comparisons were directly performed instead,

276 comparing the slope changes between the FH and the LH, slopes during the FH, and slopes  
277 during the LH between patients and controls.

278 We compared further sleep EEG characteristics, i.e. numbers of detected slow waves and  
279 distribution of sleep stage distribution, directly between the groups. As some of the variables  
280 were not normally distributed, we applied non-parametric testing (two-tailed Mann-Whitney  
281 *U*-test) to all these variables.

282 Pearson correlation coefficients were calculated to assess the significance of associations  
283 between variables if residuals were normally distributed. Spearman correlation coefficients  
284 are reported otherwise. The threshold for significance for statistical analyzes was set at  $p <$   
285 0.05.

## 286 **2.5. Data and code availability**

287 MATLAB scripts used for the analyses in this study are provided by the corresponding author  
288 upon reasonable request.

### 3. Results

#### 3.1. Changes of slow wave slopes across the night

In the analysis of slopes of slow waves during the FH and LH of NREM sleep in patients (#1 (B), #2, #4, #6, #7, and #9) and controls, we found a significant main effect for both hour ( $F(1, 34) = 33.31, p < 0.001$ , ANOVA) and group ( $F(1, 34) = 4.65, p = 0.038$ , ANOVA). This signifies that slopes were, in general, higher during the FH than during the LH ( $+54.02 \pm 9.36$   $\mu\text{V/s}$ , difference of means  $\pm$  standard error of difference, based on estimated marginal means) and overall higher in controls compared to patients ( $+43.02 \pm 19.95$   $\mu\text{V/s}$ ). Importantly, there was a significant interaction between hour and group ( $F(1, 34) = 6.91, p = 0.013$ , ANOVA). Namely, the decrease of the slope from the FH to the LH was significantly more pronounced in controls compared to patients ( $-49.21 \pm 16.15$   $\mu\text{V/s}$ , Fig. 2). Post hoc tests revealed that controls showed significantly steeper slopes than patients during the FH ( $+67.62 \pm 21.38$   $\mu\text{V/s}$ ,  $t(34) = 2.598, p = 0.022$ , independent samples  $t$ -test), whereas there was no significant difference between the groups for slopes during the LH ( $18.41 \pm 25.24$   $\mu\text{V/s}$ ,  $t(34) = 1.074, p = 0.980$ , independent samples  $t$ -test, Fig. 2). Besides, while controls demonstrated a strong correlation between the slope during the FH of NREM sleep and the change of the slope across the night ( $r(28) = -0.845, p < 0.001$ , Pearson correlation coefficient, Fig. 3), there was no equivalent finding for patients with anti-NMDAR encephalitis ( $r(4) = 0.125, p = 0.814$ , Pearson correlation coefficient, Fig. 3). This means for control participants that, the steeper the slope was in the FH, the more it decreased towards the LH. In contrast, this relationship could not be confirmed in patients.

Results were comparable when we included the three patient EEGs with abnormal sleep architecture (#1 (A), #3, and #8) in the analysis (data not shown).

[Insert Figure 2 (1.5-column fitting)]

[Insert Figure 3 (2-column fitting)]

### 3.2. Changes in individual participants

All controls consistently showed a decrease in the slope from the FH to the LH of NREM sleep (range -198.94 to -0.79  $\mu\text{V/s}$ ), whereas this was less consistent in patients (range -64.39 to 33.97  $\mu\text{V/s}$ ). Most of the latter showed a decrease (#1, #2, #3, #5, #6, and #9), but several also showed an increase (#4, #7, and #8), see Table 2 and Fig. 4. The overnight change of the slope in patient #5 (-31.57  $\mu\text{V/s}$ ), whose EEG was recorded 4 years after a relapse of anti-NMDAR encephalitis, was within the relatively small range of the values of controls in the corresponding age of a given patient (-25.43 to -55.96  $\mu\text{V/s}$ ) (Table 2, Fig. 4). Similarly, this patient's slope values during the FH and LH of NREM sleep (363.63  $\mu\text{V/s}$  and 332.05  $\mu\text{V/s}$ , respectively) were either within or close to the values from the controls in the corresponding age (361.78 to 401.19  $\mu\text{V/s}$  and 333.15 to 347.60  $\mu\text{V/s}$ , respectively).

[Insert Table 2]

[Insert Figure 4 (1-column fitting)]

### 3.3. Further sleep EEG characteristics

Numbers of detected slow waves during the FH of NREM, the LH of NREM, and all NREM of the sleep period were not different between the groups (Table 3). Repeating the analysis after including the three patient recordings with severe sleep disturbance yielded a significantly lower number of slow waves in patients (median 1584.56, IQR 1074.69,  $U = 78.00$ ,  $p = 0.022$ , Mann-Whitney  $U$ -test) than in controls (median 2261.25, IQR 809.19) during the FH of NREM sleep. Yet, counts of slow waves were not different during the LH or all NREM sleep in the sleep period (data not shown).



In addition, patients did not significantly differ from controls in the length of any of the sleep-wake stages, apart from a longer sleep duration (time from falling asleep to waking up) during the EEG recording (difference of medians +1.73 hours,  $U = 15.00$ ,  $p = 0.001$ , Mann-Whitney  $U$ -test) (Table 3). Comparable statistical outcomes were found when the three patient EEGs with disturbance of sleep architecture were included for analysis (data not shown).

[Insert Table 3]

### 3.4. Participants' ages and changes of slopes across the night

Healthy individuals showed smaller overnight decreases of slow wave slopes with increasing age (Spearman's  $\rho(28) = 0.724$ ,  $p < 0.001$ , Fig. 5). Contrastingly, such an age-related effect was not evident in patients (Spearman's  $\rho(4) = 0.086$ ,  $p = 0.872$ ). Results were comparable when the three initially excluded patient EEGs were added to the analysis (Fig. 5).

[Insert Figure 5 (1.5-column fitting)]

## 4. Discussion

In this study, we hypothesized that changes of slow wave slopes from the FH to the LH of NREM sleep, an indirect measure of synaptic plasticity (Riedner et al., 2007; Vyazovskiy et al., 2009), are altered in a human model of NMDAR deficiency caused by anti-NMDAR antibodies, i.e. patients with anti-NMDAR encephalitis. Results confirmed that the overnight decrease of the slope is significantly smaller for patients than for healthy controls, accompanied by significantly smaller slopes during the FH of NREM sleep. Contrastingly, the slope during the LH of NREM sleep does not significantly differ between patients and controls. These results are in support of our hypothesis and, therefore, suggest that the analyzed sleep EEG markers for synaptic plasticity are sensitive to an NMDAR deficiency as evident in anti-NMDAR encephalitis. We conclude that synaptic plasticity seems altered in this human model of NMDAR deficiency.

Various studies have proposed the functional involvement of cortical NMDAR in slow wave sleep (NREM stage 3) (Armstrong-James and Fox, 1988; Bazhenov et al., 2002; Duncan et al., 2013). Yet, disruption of NMDAR function in animals revealed that these receptors are additionally engaged in changes of EEG slow waves following synaptic potentiation during wakefulness (Campbell and Feinberg, 1996; Miyamoto et al., 2003). Electroencephalographic abnormalities have also been investigated in anti-NMDAR encephalitis patients, i.e. human models of NMDAR deficiency (Benjumea-Cuartas et al., 2017; Gitiaux et al., 2013; Nosadini et al., 2015). However, to the best of our knowledge, this is the first study comparing slow wave characteristics during NREM sleep between patients with anti-NMDAR encephalitis and healthy individuals.

The synaptic homeostasis hypothesis may contribute to the understanding of the observations in patients with functional NMDAR deficiency. It states that the degree of net synaptic

downscaling during sleep is closely tied to the net increase in synaptic strength during prior wakefulness (Tononi and Cirelli, 2014). Synaptic strengthening during wakefulness is the result of long-term potentiation (LTP) of cortical circuits, which is assumed to be the primary mechanism of learning (Dupuis et al., 2014). Numerous studies suggested that the synaptic strength of cortical connections is reflected by the slope of slow waves (Esser et al., 2007; Riedner et al., 2007; Vyazovski et al., 2009). As NMDAR are crucial for the induction of LTP (Collingridge and Bliss, 1987), the smaller slopes during the FH of NREM sleep in patients could indicate less LTP during wakefulness because of NMDAR deficiency.

However, NMDAR also play a role in promoting long-term depression (LTD) of synaptic networks (González-Rueda et al., 2018; Nabavi et al., 2013). LTD is predominant during sleep, causing a net decrease of synaptic strength (Tononi and Cirelli, 2014). The smaller slope decrease in patients with NMDAR deficiency may, therefore, indicate that also LTD is impaired. As patients were at different stages of their disease, different degrees of NMDAR deficiency and thus alterations in synaptic plasticity were expected, which is supported by the high variability of overnight changes of slopes in patients (Table 2, Fig. 4). Moreover, to achieve homeostasis of synaptic strength, we would expect these overnight changes of slopes to relate to the level at the beginning of sleep resulting from previous wakefulness. The lack of a correlation between slopes during the FH of NREM sleep and their change during sleep in patients (Fig. 3) implies that the homeostatic regulation of slow waves is disrupted. This indicates a dysfunction of synaptic homeostasis independent of smaller slopes at the beginning of sleep.

Functional NMDAR are considered crucial in the maintenance of normal sleep patterns (Tomita et al., 2015; Vataev et al., 2014). Aberrant sleep patterns, observed in patients with anti-NMDAR encephalitis (Florance et al., 2009; Gitiaux et al., 2013; Irani et al., 2010), may theoretically influence the overnight changes of slow waves. To minimize such a confounding

effect, only patient EEGs with visually normal appearing hypnograms were included in the main statistical analysis. Besides longer total sleep periods in patients, neither durations and proportions of sleep stages, nor the numbers of detected slow waves differed between patients and controls (Table 3). Additionally, by including controls with similar age as patients, we prevented that age-related differences in overnight slope decrease – as confirmed to exist in healthy subjects (Fig. 5) – would have driven the outcomes. Therefore, the altered slow wave slope values in our patients are likely to be the result of factors beyond altered sleep architecture and age.

The majority of patients in this study were female (7/9), corresponding with the fact that females are predisposed for the development of anti-NMDAR encephalitis (Suh-Lailam et al., 2013). One of them, patient #5, was measured more than 5 years after diagnosis and about 4 years after a relapse of the disease. She had no clinical sequelae. Clinical recovery from anti-NMDAR encephalitis occurs due to a decrease of anti-NMDAR antibodies, leading to the recuperation of NMDAR function (Hughes et al., 2010). Recuperated NMDAR function could be explanatory for results from patient #5, being within or close to the narrow range of values of controls in the corresponding age of a given patient (Fig. 4). However, since we do not have an EEG during active disease, it remains unknown whether slow wave slope variables were altered at that time. Reversibility of pathologically altered overnight changes of slow wave slopes has been shown in ESES (Bölsterli et al., 2017), a disease that has been linked to a genetically determined gain of NMDAR function (Carvill et al., 2013; Lemke et al., 2013; Lesca et al., 2013).

This study also has limitations. One of them is certainly the small number of patients included (n = 9). However, given the rarity of pediatric anti-NMDAR encephalitis (Leypoldt et al., 2013) and the scarcity of whole-night EEGs in its patients, we believe the size of our dataset is reasonably large. In particular, the large control group with the same age distribution

rendered it unlikely that differences arose from the selected controls since it accounted for the variance that exists between individuals in a specific age range. Additionally, 9/21 EEGs were not analyzable due to artifacts and severely altered background activity preventing sleep stage scoring. Patients in the acute phase of the disease are frequently agitated and suffer hyper-motor movement disorders; both reasons for EEG artifacts. These issues may have introduced a selection bias towards patients less affected at the time of the EEG. This possible bias would reduce differences compared to healthy controls. Importantly, despite the small sample size and EEGs of rather less affected individuals, we nonetheless demonstrate significant group effects.

Another limitation of this retrospective study is that it is unknown whether participants slept during the day before the night of the EEG recording. For those who did, slopes in the FH of NREM sleep during the EEG recording may have been lowered by both a reduced time of synaptic potentiation during wakefulness and a decrease of synaptic strength during this daytime sleep. Moreover, lacking information on the occurrence of seizures in patients the day preceding their whole-night EEGs could have additionally systematically impacted the results. However, since seizures have been shown to be related to increased SWA and slope of slow waves in the sleep EEG (Boly et al., 2017), one would expect an increase of slope of slow waves in the sleep period after wake-time seizures. As this would have weakened our results, the differences between patients and controls would be even stronger when accounting for this.

A possible confounder could have been that most of the patients with active disease underwent drug treatment at the time of the EEG registration. This included corticosteroids and a variety of anti-seizure agents (Supplementary Table 1). Various substances have been suggested to alter slow wave sleep in different directions (Holsboer et al., 1988; Legros and Bazil, 2003). In earlier studies of our group, we showed that corticosteroids reduce the slope

of slow waves in infants with infantile spasms. However, the overnight change of slope was not investigated (Fattinger et al., 2015). Due to the small sample size in this study, the effect of corticosteroids could only be analyzed qualitatively. Slope values during the FH and LH, as well as overnight changes of the slope in patients on corticosteroids, were below, within, and above the levels of controls (Fig. 4). Hence, a systematic influence of corticosteroid treatment on how slope values differed from the controls in the corresponding age of a given patient is highly unlikely. Additionally, the wide variety of anti-seizure drugs hindered grouping of patients to accurately estimate their effects. Consequently, we cannot exclude an influence of anti-seizure drug treatments on our results, even though a systematic effect is improbable because of the large variability in treatments. Despite these limitations, we believe that our study is unique as it contains a group of young patients with a very rare, yet well-defined disease (by the occurrence of clinical symptoms and anti-NMDAR antibodies), which we compared to a large healthy control group of the same age and (nearly) same sex distribution.

Future perspectives related to this first study on overnight changes of slow wave slopes in a human model of NMDAR deficiency would be to conduct prospective and ideally longitudinal multicenter studies with standardized data acquisition (clinical, laboratory, imaging and EEG data) in larger samples of patients with anti-NMDAR encephalitis. Such studies could clarify whether dysregulated changes of slow wave slopes across the night can account for clinical symptoms and if recovery of overnight changes of the slopes is accompanied by a clinical recovery in patients. Alternatively, NMDAR-related parameters could be estimated by the use of generative models such as dynamic causal models (DCM), an approach that has been applied in previous studies in anti-NMDAR encephalitis (Cooray et al., 2015; Rosch et al., 2018; Symmonds et al., 2018), but not with regard to sleep EEG characteristics. Besides, more direct markers of functional NMDAR, for example levels of autoantibodies against NMDAR, could be related to the EEG markers of synaptic plasticity.

471 This would be a next step towards a novel, clinically applicable, electrophysiological  
472 biomarker for pathologies of synaptic plasticity.

473 In conclusion, patients with anti-NMDAR encephalitis compared to controls show a smaller  
474 decrease of slow wave slopes over the course of the night and smaller slopes at the beginning  
475 of the night. As these patients are known to have reduced functional NMDAR and as changes  
476 in slow wave slopes have been suggested to reflect synaptic plasticity, our results support the  
477 presumption that synaptic plasticity during sleep and wakefulness, including synaptic  
478 homeostasis, is hampered due to functional NMDAR deficiency. In future, the slope of slow  
479 waves might be used as an instrument for recognition of altered neuronal plasticity, for  
480 example due to altered NMDAR function in diseases and physiological situations such as  
481 learning or normal development.

## 482     **Acknowledgements**

483     This work was supported by radiz - Rare Disease Initiative Zurich (to S.R.G.), the Swiss  
484     National Science Foundation (PCEFP1-181279) (to S.K.), the Swiss National Science  
485     Foundation (320030-179443 and 320030-153387) (to R.H.), the Clinical Research Priority  
486     Program “Sleep and Health” of the University of Zurich (to R.H.), the Anna Müller  
487     Grocholski foundation and the EMDO foundation (to B.K.B.).

488

489     We thank Jakob Heinzle for his suggestions and inputs regarding the statistical approach.



## References

- Armitage, R., Hoffmann, R., Trivedi, M., Rush, A.J., 2000. Slow-wave activity in NREM sleep: sex and age effects in depressed outpatients and healthy controls. *Psychiatry Res.* 95, 201–213. [https://doi.org/https://doi.org/10.1016/S0165-1781\(00\)00178-5](https://doi.org/https://doi.org/10.1016/S0165-1781(00)00178-5)
- Armstrong-James, M., Fox, K., 1988. Evidence for a specific role for cortical NMDA receptors in slow-wave sleep. *Brain Res.* 451, 189–196. [https://doi.org/10.1016/0006-8993\(88\)90763-9](https://doi.org/10.1016/0006-8993(88)90763-9)
- Bazhenov, M., Timofeev, I., Steriade, M., Sejnowski, T.J., 2002. Model of thalamocortical slow-wave sleep oscillations and transitions to activated states. *J. Neurosci.* 22, 8691–8704. <https://doi.org/10.1523/jneurosci.22-19-08691.2002>
- Benjumea-Cuartas, V., Eisermann, M., Simonnet, H., Hully, M., Nabbout, R., Desguerre, I., Kaminska, A., 2017. Unilateral predominance of abnormal movements: A characteristic feature of the pediatric anti-NMDA receptor encephalitis? *Epilepsy Behav. Case Reports* 7, 42–44. <https://doi.org/https://doi.org/10.1016/j.ebcr.2016.12.002>
- Bölsterli, B.K., Gardella, E., Pavlidis, E., Wehrle, F.M., Tassinari, C.A., Huber, R., Rubboli, G., 2017. Remission of encephalopathy with status epilepticus (ESES) during sleep renormalizes regulation of slow wave sleep. *Epilepsia* 58, 1892–1901. <https://doi.org/10.1111/epi.13910>
- Bölsterli, B.K., Schmitt, B., Bast, T., Critelli, H., Heinzle, J., Jenni, O.G., Huber, R., 2011. Impaired slow wave sleep downscaling in encephalopathy with status epilepticus during sleep (ESES). *Clin. Neurophysiol.* 122, 1779–1787. <https://doi.org/10.1016/J.CLINPH.2011.01.053>
- Bölsterli Heinzle, B.K., Fattinger, S., Kurth, S., Lebourgeois, M.K., Ringli, M., Bast, T., Critelli, H., Schmitt, B., Huber, R., 2014. Spike wave location and density disturb sleep slow waves in patients with CSWS (continuous spike waves during sleep). *Epilepsia* 55, 584–591. <https://doi.org/10.1111/epi.12576>
- Boly, M., Jones, B., Findlay, G., Plumley, E., Mensen, A., Hermann, B., Tononi, G., Maganti, R., 2017. Altered sleep homeostasis correlates with cognitive impairment in patients with focal

515       epilepsy. *Brain* 140, 1026–1040. <https://doi.org/10.1093/brain/awx017>

516       Burnashev, N., Szepetowski, P., 2015. NMDA receptor subunit mutations in neurodevelopmental  
517       disorders. *Curr. Opin. Pharmacol.* 20, 73–82.  
518       <https://doi.org/https://doi.org/10.1016/j.coph.2014.11.008>

519       Campbell, I.G., Feinberg, I., 1996. NREM delta stimulation following MK-801 is a response of sleep  
520       systems. *J. Neurophysiol.* 76, 3714–3720. <https://doi.org/10.1152/jn.1996.76.6.3714>

521       Carvill, G.L., Regan, B.M., Yendle, S.C., O’Roak, B.J., Lozovaya, N., Bruneau, N., Burnashev, N.,  
522       Khan, A., Cook, J., Geraghty, E., Sadleir, L.G., Turner, S.J., Tsai, M.-H., Webster, R., Ouvrier,  
523       R., Damiano, J.A., Berkovic, S.F., Shendure, J., Hildebrand, M.S., Szepetowski, P., Scheffer,  
524       I.E., Mefford, H.C., 2013. GRIN2A mutations cause epilepsy-aphasia spectrum disorders. *Nat.*  
525       *Genet.* 45, 1073–1076. <https://doi.org/10.1038/ng.2727>

526       Collingridge, G.L., Bliss, T.V.P., 1987. NMDA receptors - their role in long-term potentiation. *Trends*  
527       *Neurosci.* 10, 288–293. [https://doi.org/https://doi.org/10.1016/0166-2236\(87\)90175-5](https://doi.org/https://doi.org/10.1016/0166-2236(87)90175-5)

528       Cooray, G.K., Sengupta, B., Douglas, P., Englund, M., Wickstrom, R., Friston, K., 2015.  
529       Characterising seizures in anti-NMDA-receptor encephalitis with dynamic causal modelling.  
530       *Neuroimage* 118, 508–519. <https://doi.org/https://doi.org/10.1016/j.neuroimage.2015.05.064>

531       Dalmau, J., Gleichman, A.J., Hughes, E.G., Rossi, J.E., Peng, X., Lai, M., Dessain, S.K., Rosenfeld,  
532       M.R., Balice-Gordon, R., Lynch, D.R., 2008. Anti-NMDA-receptor encephalitis: case series and  
533       analysis of the effects of antibodies. *Lancet. Neurol.* 7, 1091–1098.  
534       [https://doi.org/10.1016/S1474-4422\(08\)70224-2](https://doi.org/10.1016/S1474-4422(08)70224-2)

535       Dalmau, J., Tüzün, E., Wu, H., Masjuan, J., Rossi, J.E., Voloschin, A., Baehring, J.M., Shimazaki, H.,  
536       Koide, R., King, D., Mason, W., Sansing, L.H., Dichter, M.A., Rosenfeld, M.R., Lynch, D.R.,  
537       2007. Paraneoplastic Anti-N-methyl-D-aspartate Receptor Encephalitis Associated with Ovarian  
538       Teratoma. *Ann. Neurol.* 61, 25–36. <https://doi.org/10.1002/ana.21050>

539       Duncan, W.C., Sarasso, S., Ferrarelli, F., Selter, J., Riedner, B.A., Hejazi, N.S., Yuan, P., Brutsche,

540 N., Manji, H.K., Tononi, G., Zarate, C.A., 2013. Concomitant BDNF and sleep slow wave  
541 changes indicate ketamine-induced plasticity in major depressive disorder. *Int. J.*  
542 *Neuropsychopharmacol.* 16, 301–311. <https://doi.org/10.1017/S1461145712000545>

543 Dupuis, J.P., Ladépêche, L., Seth, H., Bard, L., Varela, J., Mikasova, L., Bouchet, D., Rogemond, V.,  
544 Honnorat, J., Hanse, E., Groc, L., 2014. Surface dynamics of GluN2B  $\square$  NMDA receptors  
545 controls plasticity of maturing glutamate synapses. *EMBO J* 33, 842–861.  
546 <https://doi.org/10.1002/emboj.201386356>

547 Escobar, M.L., Chao, V., Bermúdez-Rattoni, F., 1998. In vivo long-term potentiation in the insular  
548 cortex: NMDA receptor dependence. *Brain Res.* 779, 314–319. [https://doi.org/10.1016/s0006-](https://doi.org/10.1016/s0006-8993(97)01175-x)  
549 [8993\(97\)01175-x](https://doi.org/10.1016/s0006-8993(97)01175-x)

550 Esser, S.K., Hill, S.L., Tononi, G., 2007. Sleep homeostasis and cortical synchronization: I. Modeling  
551 the effects of synaptic strength on sleep slow waves. *Sleep* 30, 1617–1630.  
552 <https://dx.doi.org/10.1093/sleep/30.12.1617>

553 Fattinger, S., Schmitt, B., Bölsterli Heinzle, B.K., Critelli, H., Jenni, O.G., Huber, R., 2015. Impaired  
554 slow wave sleep downscaling in patients with infantile spasms. *Eur. J. Paediatr. Neurol.* 19, 134–  
555 142. <https://doi.org/10.1016/j.ejpn.2014.11.002>

556 Finelli, L.A., Borbely, A.A., Achermann, P., 2001. Functional topography of the human nonREM  
557 sleep electroencephalogram. *Eur. J. Neurosci.* 13, 2282–2290. [https://doi.org/10.1046/j.0953-](https://doi.org/10.1046/j.0953-816x.2001.01597.x)  
558 [816x.2001.01597.x](https://doi.org/10.1046/j.0953-816x.2001.01597.x)

559 Florance, N.R., Davis, R.L., Lam, C., Szperka, C., Zhou, L., Ahmad, S., Campen, C.J., Moss, H.,  
560 Peter, N., Gleichman, A.J., Glaser, C.A., Lynch, D.R., Rosenfeld, M.R., Dalmau, J., 2009. Anti-  
561 N-Methyl-D-Aspartate Receptor (NMDAR) Encephalitis in Children and Adolescents. *Ann*  
562 *Neurol* 66, 11–18. <https://doi.org/10.1002/ana.21756>

563 Gitiaux, C., Simonnet, H., Eisermann, M., Leunen, D., Dulac, O., Nabbout, R., Chevignard, M.,  
564 Honnorat, J.Ô., Gataullina, S., Musset, L., Scalais, E., Gauthier, A., Hully, M., Boddaert, N.,

565       Kuchenbuch, M., Desguerre, I., Kaminska, A., 2013. Early electro-clinical features may  
566       contribute to diagnosis of the anti-NMDA receptor encephalitis in children. *Clin. Neurophysiol.*  
567       124, 2354–2361. <https://doi.org/10.1016/j.clinph.2013.05.023>

568       González-Rueda, A., Pedrosa, V., Feord, R.C., Clopath, C., Paulsen, O., 2018. Activity-Dependent  
569       Downscaling of Subthreshold Synaptic Inputs during Slow-Wave-Sleep-like Activity In Vivo.  
570       *Neuron* 97, 1244–1252.e1–e5. <https://doi.org/10.1016/j.neuron.2018.01.047>

571       Holsboer, F., von Bardeleben, U., Steiger, A., 1988. Effects of Intravenous Corticotropin-Releasing  
572       Hormone upon Sleep-Related Growth Hormone Surge and Sleep EEG in Man.  
573       *Neuroendocrinology* 48, 32–38. <https://doi.org/10.1159/000124986>

574       Hughes, E.G., Peng, X., Gleichman, A.J., Lai, M., Zhou, L., Tsou, R., Parsons, T.D., Lynch, D.R.,  
575       Dalmau, J., Balice-Gordon, R.J., 2010. Cellular and Synaptic Mechanisms of Anti-NMDA  
576       Receptor Encephalitis. *J. Neurosci.* 30, 5866–5875. [https://doi.org/10.1523/JNEUROSCI.0167-](https://doi.org/10.1523/JNEUROSCI.0167-10.2010)  
577       10.2010

578       Iber, C., Ancoli-Israel, S., Chesson, A.L., Quan, S., 2007. The AASM Manual for the Scoring of Sleep  
579       and Associated Events: Rules, Terminology and Technical Specifications. *Am. Acad. Sleep Med.*

580       Irani, S.R., Bera, K., Waters, P., Zuliani, L., Maxwell, S., Zandi, M.S., Frieze, M.A., Galea, I.,  
581       Kullmann, D.M., Beeson, D., Lang, B., Bien, C.G., Vincent, A., 2010. N-methyl-d-aspartate  
582       antibody encephalitis: temporal progression of clinical and paraclinical observations in a  
583       predominantly non-paraneoplastic disorder of both sexes. *Brain* 133, 1655–1667.  
584       <https://doi.org/10.1093/brain/awq113>

585       Johnson, E.O., Roth, T., Schultz, L., Breslau, N., 2006. Epidemiology of DSM-IV insomnia in  
586       adolescence: lifetime prevalence, chronicity, and an emergent gender difference. *Pediatrics* 117,  
587       e247–e256. <https://doi.org/10.1542/peds.2004-2629>

588       Knutson, K.L., 2005. The association between pubertal status and sleep duration and quality among a  
589       nationally representative sample of U. S. adolescents. *Am. J. Hum. Biol.* 17, 418–424.

590 <https://doi.org/10.1002/ajhb.20405>

591 Kurth, S., Dean, D.C., Achermann, P., O’Muircheartaigh, J., Huber, R., Deoni, S.C.L., LeBourgeois,  
592 M.K., 2016. Increased Sleep Depth in Developing Neural Networks: New Insights from Sleep  
593 Restriction in Children. *Front. Hum. Neurosci.* 10, 456.  
594 <https://doi.org/10.3389/fnhum.2016.00456>

595 Kurth, S., Ringli, M., Lebourgeois, M.K., Geiger, A., Buchmann, A., Jenni, O.G., Huber, R., 2012.  
596 Mapping the electrophysiological marker of sleep depth reveals skill maturation in children and  
597 adolescents. *Neuroimage* 63, 959–965. <https://doi.org/10.1016/j.neuroimage.2012.03.053>

598 Kurth, S., Jenni, O.G., Riedner, B.A., Tononi, G., Carskadon, M.A., Huber, R., 2010a. Characteristics  
599 of sleep slow waves in children and adolescents. *Sleep* 33, 475–480.  
600 <https://doi.org/10.1093/sleep/33.4.475>

601 Kurth, S., Ringli, M., Geiger, A., LeBourgeois, M., Jenni, O.G., Huber, R., 2010b. Mapping of  
602 Cortical Activity in the First Two Decades of Life: A High-Density Sleep Electroencephalogram  
603 Study. *J. Neurosci.* 30, 13211–13219. <https://doi.org/10.1523/JNEUROSCI.2532-10.2010>

604 Legros, B., Bazil, C.W., 2003. Effects of antiepileptic drugs on sleep architecture: a pilot study. *Sleep*  
605 *Med.* 4, 51–55. [https://doi.org/https://doi.org/10.1016/s1389-9457\(02\)00217-4](https://doi.org/https://doi.org/10.1016/s1389-9457(02)00217-4)

606 Lemke, J.R., Lal, D., Reinthaler, E.M., Steiner, I., Nothnagel, M., Alber, M., Geider, K., Laube, B.,  
607 Schwake, M., Finsterwalder, K., Franke, A., Schilhabel, M., Jähn, J.A., Muhle, H., Boor, R., Van  
608 Paesschen, W., Caraballo, R., Fejerman, N., Weckhuysen, S., De Jonghe, P., Larsen, J., Møller,  
609 R.S., Hjalgrim, H., Addis, L., Tang, S., Hughes, E., Pal, D.K., Veri, K., Vaher, U., Talvik, T.,  
610 Dimova, P., Guerrero López, R., Serratosa, J.M., Linnankivi, T., Lehesjoki, A.-E., Ruf, S.,  
611 Wolff, M., Buerki, S., Wohlrab, G., Kroell, J., Datta, A.N., Fiedler, B., Kurlemann, G., Kluger,  
612 G., Hahn, A., Haberlandt, D.E., Kutzer, C., Sperner, J., Becker, F., Weber, Y.G., Feucht, M.,  
613 Steinböck, H., Neophythou, B., Ronen, G.M., Gruber-Sedlmayr, U., Geldner, J., Harvey, R.J.,  
614 Hoffmann, P., Herms, S., Altmüller, J., Tolia, M.R., Thiele, H., Nürnberg, P., Wilhelm, C.,

615 Stephani, U., Helbig, I., Lerche, H., Zimprich, F., Neubauer, B.A., Biskup, S., von Spiczak, S.,  
616 2013. Mutations in GRIN2A cause idiopathic focal epilepsy with rolandic spikes. *Nat. Genet.* 45,  
617 1067–1072. <https://doi.org/10.1038/ng.2728>

618 Lesca, G., Rudolf, G., Bruneau, N., Lozovaya, N., Labalme, A., Boutry-Kryza, N., Salmi, M.,  
619 Tsintsadze, T., Addis, L., Motte, J., Wright, S., Tsintsadze, V., Michel, A., Doummar, D.,  
620 Lascelles, K., Strug, L., Waters, P., De Bellescize, J., Vrielynck, P., De Saint Martin, A., Ville,  
621 D., Ryvlin, P., Arzimanoglou, A., Hirsch, E., Vincent, A., Pal, D., Burnashev, N., Sanlaville, D.,  
622 Szeppetowski, P., 2013. GRIN2A mutations in acquired epileptic aphasia and related childhood  
623 focal epilepsies and encephalopathies with speech and language dysfunction. *Nat. Genet.* 45,  
624 1061–6. <https://doi.org/10.1038/ng.2726>

625 Leypoldt, F., Wandinger, K.-P., Bien, C.G., Dalmau, J., 2013. Autoimmune Encephalitis. *Eur. Neurol.*  
626 *Rev.* 8, 31–37. <https://doi.org/10.17925/ENR.2013.08.01.31>

627 Lustenberger, C., Wehrle, F., Tüshaus, L., Achermann, P., Huber, R., 2015. The Multidimensional  
628 Aspects of Sleep Spindles and Their Relationship to Word-Pair Memory Consolidation. *Sleep*  
629 38, 1093–1103. <https://doi.org/10.5665/sleep.4820>

630 Miyamoto, H., Katagiri, H., Hensch, T., 2003. Experience-dependent slow-wave sleep development.  
631 *Nat. Neurosci.* 6, 553–554. <https://doi.org/10.1038/nn1064>

632 Nabavi, S., Kessels, H.W., Alfonso, S., Aow, J., Fox, R., Malinow, R., 2013. Metabotropic NMDA  
633 receptor function is required for NMDA receptor-dependent long-term depression. *Proc. Natl.*  
634 *Acad. Sci.* 110, 4027–4032. <https://doi.org/10.1073/pnas.1219454110>

635 Nosadini, M., Boniver, C., Zuliani, L., de Palma, L., Cainelli, E., Battistella, P.A., Toldo, I., Suppiej,  
636 A., Sartori, S., 2015. Longitudinal electroencephalographic (EEG) findings in pediatric anti-N-  
637 methyl-D-aspartate (anti-NMDA) receptor encephalitis: the Padua experience. *J. Child Neurol.*  
638 30, 238–245. <https://doi.org/10.1177/0883073813515947>

639 Riedner, B.A., Vyazovskiy, V. V., Huber, R., Massimini, M., Esser, S., Murphy, M., Tononi, G., 2007.

640 Sleep Homeostasis and Cortical Synchronization: III. A High-Density EEG Study of Sleep Slow  
641 Waves in Humans. *Sleep* 33, 1643-1657. <https://doi.org/10.1093/sleep/30.12.1643>

642 Rosch, R.E., Wright, S., Cooray, G., Papadopoulou, M., Goyal, S., Lim, M., Vincent, A., Upton, A.L.,  
643 Baldeweg, T., Friston, K.J., 2018. NMDA-receptor antibodies alter cortical microcircuit  
644 dynamics. *Proc. Natl. Acad. Sci.* 115, E9916--E9925. <https://doi.org/10.1073/pnas.1804846115>

645 Suh-Lailam, B.B., Haven, T.R., Copple, S.S., Knapp, D., Jaskowski, T.D., Tebo, A.E., 2013. Anti-  
646 NMDA-receptor antibody encephalitis: Performance evaluation and laboratory experience with  
647 the anti-NMDA-receptor IgG assay. *Clin. Chim. Acta* 421, 1–6.  
648 <https://doi.org/10.1016/j.cca.2013.02.010>

649 Symmonds, M., Moran, C.H., Leite, M.I., Buckley, C., Irani, S.R., Stephan, K.E., Friston, K.J.,  
650 Moran, R.J., 2018. Ion channels in EEG: isolating channel dysfunction in NMDA receptor  
651 antibody encephalitis. *Brain* 141, 1691–1702. <https://doi.org/10.1093/brain/awy107>

652 Tomita, J., Ueno, T., Mitsuyoshi, M., Kume, S., Kume, K., 2015. The NMDA Receptor Promotes  
653 Sleep in the Fruit Fly, *Drosophila melanogaster*. *PLoS One* 10, e0128101.  
654 <https://doi.org/10.1371/journal.pone.0128101>

655 Tononi, G., Cirelli, C., 2014. Sleep and the Price of Plasticity: From Synaptic and Cellular  
656 Homeostasis to Memory Consolidation and Integration. *Neuron* 81, 12–34.  
657 <https://doi.org/https://doi.org/10.1016/j.neuron.2013.12.025>

658 Tsai, G., Coyle, J.T., 2002. Glutamatergic Mechanisms in Schizophrenia. *Annu. Rev. Pharmacol.*  
659 *Toxicol.* 42, 165–179. <https://doi.org/10.1146/annurev.pharmtox.42.082701.160735>

660 Vataev, S.I., Oganessian, G.A., Gmiro, V.E., Lukomskaya, N.Y., Magazanik, L.G., 2014. Effects of  
661 Ionotropic Glutamate Receptor Channel Blockers on the Organization of Sleep in Rats. *Neurosci.*  
662 *Behav. Physiol.* 44, 365–370. <https://doi.org/10.1007/s11055-014-9920-7>

663 Volk, C., Jaramillo, V., Studler, M., Furrer, M., Tuura, R.L.O., Huber, R., 2019. Diurnal changes in  
664 human brain glutamate + glutamine levels in the course of development and their relationship to

665 sleep. *Neuroimage* 196, 269–275.

666 <https://doi.org/https://doi.org/10.1016/j.neuroimage.2019.04.040>

667 Vyazovskiy, V. V, Olcese, U., Lazimy, Y.M., Faraguna, U., Esser, S.K., Williams, J.C., Cirelli, C.,

668 Tononi, G., 2009. Cortical firing and sleep homeostasis. *Neuron* 63, 865–878.

669 <https://doi.org/10.1016/j.neuron.2009.08.024>

670 Wehrle, F.M., Latal, B., O’Gorman, R.L., Hagmann, C.F., Huber, R., 2017. Sleep EEG maps the

671 functional neuroanatomy of executive processes in adolescents born very preterm. *Cortex*. 86,

672 11–21. <https://doi.org/10.1016/j.cortex.2016.10.011>

673 Werth, E., Achermann, P., Borbély, A., 1997. Fronto-occipital EEG power gradients in human sleep. *J.*

674 *Sleep Res.* 6, 102–112. <https://doi.org/10.1046/j.1365-2869.1997.d01-36.x>

675 Zhang, Y., Li, P., Feng, J., Wu, M., 2016. Dysfunction of NMDA receptors in Alzheimer’s disease.

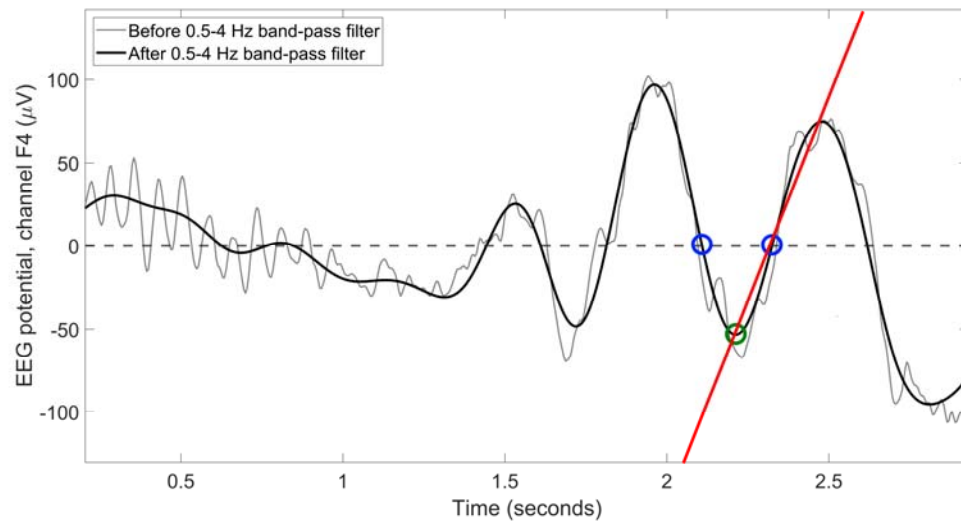
676 *Neurol. Sci.* 37, 1039–47. <https://doi.org/10.1007/s10072-016-2546-5>

677



## Figures

### Figure 1



Example of a slow wave slope calculation demonstrated with an excerpt of the EEG of patient #5. The grey and black lines illustrate the EEG signal before and after application of the 0.5-4 Hz digital band-pass filter, respectively. Examples of detected zero-crossings of the band-pass filtered signal are depicted by blue circles, whereas the most negative value of the deflection in between is highlighted by a green circle. The slope of the corresponding slow wave was calculated based on the red straight line that passes through the minimum and the next zero-crossing.

## 687 **Figure 2**

688 *[Figure uploaded separately as file 'Fig 2.EPS']*

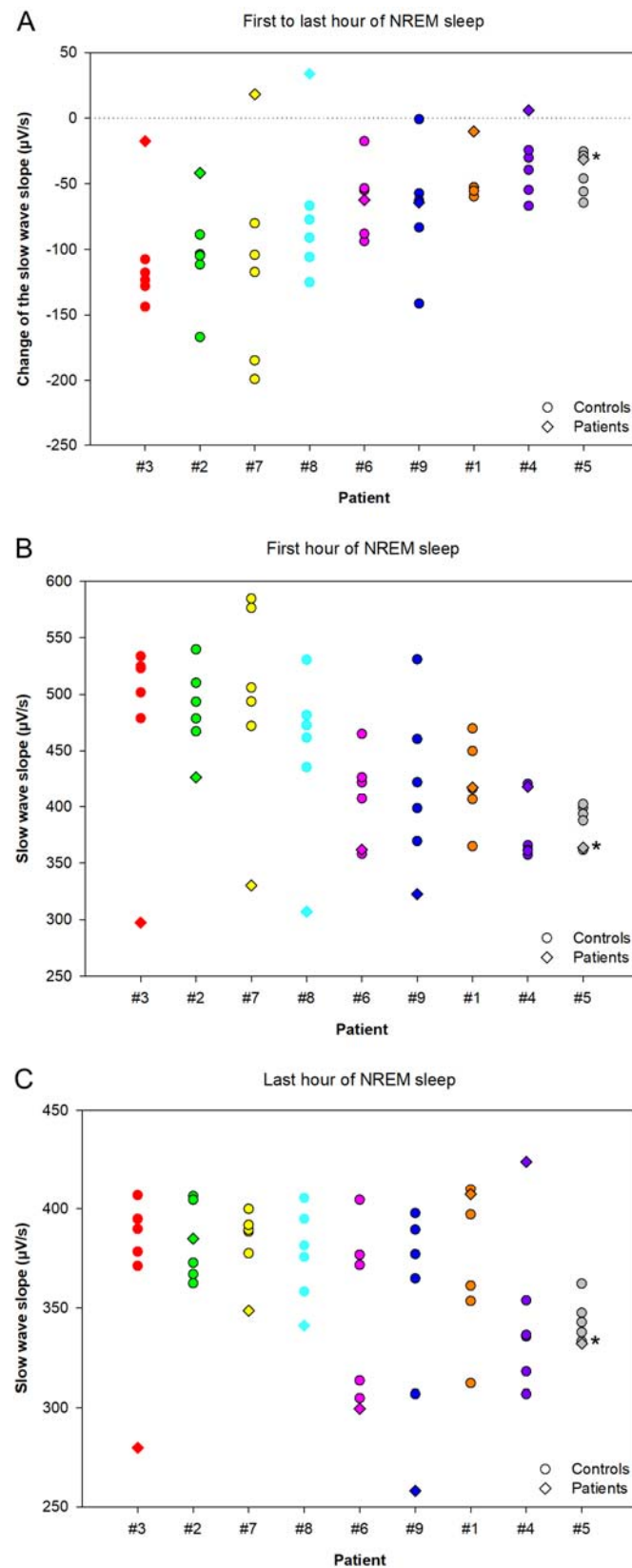
689 Slow wave slope for the first and last hour of non-rapid eye movement (NREM) sleep. Group mean  
 690 values are provided for patients (black diamonds and dashed line) and control participants (grey circles  
 691 and solid line). Error bars represent the standard error of the mean. The asterisk (\*) indicates a  
 692 significant interaction effect for 'hour' and 'group', i.e. the overnight (first hour to last hour of NREM  
 693 sleep) change of the slow wave slope is different in patients and controls. Post hoc analyzes revealed a  
 694 significant group difference for the first hour (marked by a black, solid triangle;  $p < 0.05$ ; two-tailed  
 695 independent samples  $t$ -test; Bonferroni corrected by multiplying the  $p$ -value by the number of post hoc  
 696 tests), but not for the last hour of NREM sleep.

697 **Figure 3**

698 *[Figure uploaded separately as file 'Fig 3.EPS']*

699 Slow wave slope during the first hour of non-rapid eye movement (NREM) sleep and the slow wave  
700 slope change across the night. Values are provided for patients (black diamonds) and control  
701 participants (grey circles).

702 **Figure 4**



704 Slow wave slope variables for patients (colored diamonds) and for controls in the corresponding age  
705 of a particular patient (circles of the same color as the corresponding diamond). Participants are  
706 ordered according to their ages (increasing from left to right). Values are shown for the change of the  
707 slow wave slope across the night (panel A), the slow wave slope during the first hour of non-rapid eye  
708 movement (NREM) sleep (panel B), and the slow wave slope during the last hour of NREM sleep  
709 (panel C). Diamonds without black borders represent patients who had only EEGs with abnormal  
710 sleep architecture (see also 2. Materials and Methods) and accordingly, the healthy controls of  
711 corresponding age are indicated by circles without black lines. Patient #5, indicated with an asterisk  
712 (\*), was measured in remission and was therefore not included in the analysis of patients during active  
713 anti-NMDAR encephalitis (see 2. Materials and Methods for details).

## 714 **Figure 5**

715 *[Figure uploaded separately as file 'Fig 5.EPS']*

716 Participants' age at the time of the EEG recording and change of the slope across the night. Patient  
 717 values are shown by uniquely colored diamonds, whereas values from control participants in the  
 718 corresponding age of a particular patient are represented by circles of the same color as the  
 719 corresponding diamond. Diamonds without a black line denote EEGs of which hypnograms were  
 720 determined by a clinician to demonstrate abnormal sleep architecture (see 2. Materials and Methods  
 721 for a specification) , with corresponding circles lacking a black border. Note that patient #1 had one  
 722 EEG with abnormal sleep architecture (indicated by a diamond without black border) and one EEG  
 723 with normal sleep architecture (indicated by a diamond with black border). Accordingly, the circles  
 724 representing control EEGs have black borders in this case. As the residuals of the variables plotted  
 725 were not normally distributed, Spearman correlation coefficients were calculated. In the figure, the  
 726 linear regression line for patients (black, dashed) is for illustrative purposes only.

## 727 Tables

### 728 Table 1

729 Clinical and electrographic characteristics of anti-NMDAR encephalitis patients at the time of EEG registration.

Patient (#)	Sex	EEG	Age (years)	Time since diagnosis	Clinical presentation	Sleep EEG structure anomalies
1	f	A^	14.7	$\cong 3\text{mt}$	Started to speak 2d before EEG, speech problems (single words expressed, slurred pronunciation). Child-like behaviour. Fluctuating confusion, disorientation, agitation. Restlessness. Improving flaccid paresis of the legs (critical illness myopathy, 75d in the intensive care unit)	Severe sleep fragmentation
		B	14.9	$\cong 5 \frac{1}{2}\text{mt}$	Clear clinical improvement compared to EEG A. Increased alertness, speaks more, still slightly blurred and word-finding problems, better motor skills (sitting, walking some steps possible). Behavioral inflexibility	None
2	m	A	7.4	<1mt	The morning before EEG, focal seizure with clonic jerking of the right-side of mouth. Mood swings and slurred speech	None
		B	7.4	<1mt	Clinical improvement compared to EEG A. Slight truncal ataxia (abnormal line gait with closed	Period (2.81hrs)

					eyes). Emotional lability. Good visuoconstructive performance. Language impairment (pronunciation, word-finding, speech planning, vowel differentiation, and auditory memory; but normal comprehension), reduced memory capacity and concentration	of continuous wakefulness after the start of NREM sleep
3	f	A^	4.3	$\cong 1 \frac{1}{2}$ mt	Mutism. Interaction by eye contact preserved. Receptive language better preserved but limited to simple orders. Chorea, allowing walking with assistance and impairing fine motor skills. Neuropsychological testing impossible	Disrupted sleep architecture; frontal seizure patterns
4	f	A	17.9	$\cong 5$ mt	No abnormalities	None
5*	f	A	20.8	$\cong 63$ mt after diagnosis, 48mt after relapse	No abnormalities	Period (3.24hrs) of continuous wakefulness after the start of NREM sleep
6	m	A	13.0	$\cong 1 \frac{1}{2}$ mt	mRS 3. Can walk approximately ten steps without support. Starting oral feeding	None
		B	13.0	$\cong 2$ mt	mRS 3. Better sleep compared to EEG A. Echolalia. Hyperphagia. Intermittent verbal	None



					aggressiveness	
7	f	A	9.5	≅1mt	mRS 2. Speech difficulties (pronunciation and word finding). Fatigue	None
8	f	A^	9.7	≅1mt	Clinically, long sleep episodes. Eats and drinks in drowsiness, orofacial dyskinesia. Muscular hypotonia in extremities. Stable torso. Weak muscle tendon reflexes	Severe sleep fragmentation
9	f	A	13.3	Diagnosis made ≅3mt after EEG (the result of CSF specimen, taken at the time of EEG, received after 3mt)	Started to speak 2d before EEG, speech problems (single words expressed, slurred pronunciation). Child-like behaviour. Fluctuating confusion, disorientation, agitation. Restlessness. Improving flaccid paresis of the legs (critical illness myopathy, 75d in the intensive care unit)	None

730

731 An EEG designated ‘A’ or ‘B’ indicates whether it concerns the first or, if applicable, the second available recording for the same patient, respectively.

732 ^ EEGs not in the main statistical analysis (see 2. Materials and Methods for details).

733 \* Patient not included in the statistical analysis, but slow wave analysis results assessed individually (see 2. Materials and Methods for details).

734 d = day(s), hrs = hours, mRS = modified Rankin Scale, mt = month(s), NREM = non-rapid eye movement.

**Table 2**

Slow wave slope values from (individual) patients with anti-NMDAR encephalitis and controls.

	Slow wave slope ( $\mu\text{V/s}$ )		
	Overnight difference (LH - FH)	FH of NREM sleep	LH of NREM sleep
Patient group (n = 6, mean)	-29.41 (SEM 14.12)*	376.67 (SEM 18.34)**	347.26 (SEM 24.50) <sup>742</sup>
Control group (n = 30, mean)	-78.62 (SEM 7.85)*	444.29 (SEM 10.98)**	365.66 (SEM 6.06) <sup>743</sup>
Patient #1	-10.10	417.44	407.34 <sup>744</sup>
Patient #2	-41.74	426.72	385.98 <sup>745</sup>
Patient #3	-17.61	297.38	279.78 <sup>746</sup>
Patient #4	5.91	418.20	424.11 <sup>747</sup>
Patient #5^	-31.57	363.63	332.05
Patient #6	-62.38	361.82	299.44 <sup>748</sup>
Patient #7	18.18	330.36	348.54 <sup>749</sup>
Patient #8	34.00	307.11	341.09 <sup>750</sup>
Patient #9	-64.39	322.50	258.11

\*Significant interaction (2x2 mixed ANOVA with a within-subject factor (FH vs. LH) and a between-subject factor (patients vs. controls),  $p < 0.05$ )

754 \*\* Significant difference (two-tailed independent samples *t*-test,  $p < 0.05$ , Bonferroni corrected for  
755 multiple comparisons by multiplying the *p*-value by the number of tests) between patients and  
756 controls.

757 ^ Not included in statistical analysis, but slow wave analysis results assessed individually (see 2.  
758 Materials and Methods for details)

759 FH = first hour (of NREM sleep); LH = last hour (of NREM sleep); NREM = non-rapid eye  
760 movement.

**Table 3**

Further sleep EEG characteristics from patients with anti-NMDAR encephalitis and controls.

	Patients (n = 6)		Controls (n = 30)		<i>P</i> -value	
	Slow wave count (#)		Slow wave count (#)			
FH of NREM sleep	1976 (1071)		2425 (757)		0.146	
LH of NREM sleep	2099 (513)		2189 (842)		0.770	
Total NREM sleep	10901 (4975)		10153 (4894)		0.544	
	Absolute (hrs)	Relative (%)	Absolute (hrs)	Relative (%)	Absolute (hrs)	Relative (%)
Sleep period	10.07 (1.54)	N.A.	8.37 (1.48)	N.A.	<0.001*	N.A.
Wake (cont.)	0.21 (0.58)	2.26 (1.83)	0.09 (0.31)	1.11 (4.15)	0.924	0.855
Wake (cum.)	0.64 (1.07)	7.14 (8.81)	0.43 (0.78)	5.49 (7.66)	0.733	0.823
NREM 1	0.43 (1.62)	4.46 (9.14)	0.48 (0.38)	5.57 (4.00)	0.412	0.513
NREM 2/3	5.74 (1.42)	63.62 (27.26)	5.49 (1.37)	69.21 (13.31)	0.667	0.564
REM	2.06 (1.32)	21.39 (8.98)	1.46 (0.84)	18.27 (7.24)	0.627	0.749

Variables are described by median and interquartile range (between parentheses). Two-tailed Mann-

Whitney *U*-tests were used in statistical comparisons between patients and controls.

\* Variables significantly different ( $p < 0.05$ ) between patients and controls.

cont. = continuous (longest period); cum. = cumulative; hrs = hours; N.A. = not applicable; NREM =

non-rapid eye movement (sleep); REM = rapid eye movement (sleep); Sleep period = time from the

beginning to the end of sleep (including periods of wakefulness).

770 **Supplementary material**

771 **Supplementary Table 1**

772 Additional clinical characteristics of patients with anti-NMDAR encephalitis.

Patient (#)	Sex	Age* (years)	Drug treatment*	Initial presentation of disease (-/+ = before/after EEG)	Cerebral MRI (-/+ = before/after EEG)	Outcome** (time after onset of symptoms)	Additional aspects
1 (A)	f	14.7	Cort, LEV, Bac, LPZ, TBZ, OPZ, Enox, Ca, Mg	Vomiting, behavioral change, confusion, after 2d first seizures, rapid worsening with severe	1st (-2 ½mt) and 2nd (-2 ½mt) no abnormalities 3rd (-½mt) global atrophy (cave: on high dose Cort)	Average cognitive performance, mild to moderate neuropsychological	
1 (B)		14.9	Cort, LEV, LPZ, TBZ	neurological impairment (ventilation), psychotic symptoms, dystonia, choreiform movement disorder, circulation support needed (-3mt (A),	1st (-5mt) and 2nd (-5mt) no abnormalities 3rd (-3mt) global atrophy (on high dose Cort)	deficits, realizes still improvements in word- finding, no neurological deficits, attending regular school, no drugs mentioned (3yr	

				-5 ½mt (B))		½mt)	
2 (A)	m	7.4	IVIG, VPA, Pheno (benzo- diazepines some hours before EEG)	Headaches for 5d, then status epilepticus, then fluctuating behavioral changes, emotional lability, agitation, aphasia	1st (-9d) and 2nd (+2d) no abnormalities	No abnormalities, no drugs (2yr 10mt)	
2 (B)		7.4	Cort, LEV, Pheno	and trunk ataxia (-½mt (A), -1mt (B))	1st (-25d) and 2nd (-14d) no abnormalities		
3	f	4.3	RTX pulses	Seizures, then dystonia, agitation and mutism (-1 ½mt)	1st (-1mt), 2nd (+1mt), 3rd (+4mt) no abnormalities	Normal neurological exam, minor executive and attentional deficits (1yr 6mt)	
4	f	17.9	none	Severe psychiatric symptoms only (-5mt)	No abnormalities (-5mt)	No abnormalities, no drugs (9mt)	Ovarian teratoma (removed)
5	f	20.8	none	Somnolence, seizures, confusion (-63mt)	No abnormalities (-5yr 3mt)	No abnormalities, no drugs (0mt)	Relapse $\cong$ 4yr
6 (A)	m	13.0	Cort, 9xPE	Behavioral change,	No abnormalities (-1 ½mt)	Mild learning disability	Preexisting mild

			(until 12d before EEG), Risp, Pheno, FZM, Enox	epileptic seizures (-1 ½mt (A), -2mt (B))		(preexisting), no drugs (3yr 11mt)	learning disability
6 (B)		13.0	Cort, 9xPE (until 24d before EEG), Pheno, Enox		No abnormalities (-2mt)		
7	f	9.5	Cort, 6xPE (until 10d before EEG), RTX (9d before EEG), Risp, DZM	Paroxysmal episodes, confusion, headache, movement disorder, language disorder (-1 ½mt)	1st no abnormalities (- 1mt) 2nd leptomenigeal enhancement left cerebral hemisphere and in some right frontoparietal, mesial sulci (- ½mt)	No abnormalities, no drugs (14mt)	
8	f	9.7	GBP, CHD, Clo, melatonin	Confusion, vomiting, diarrhea, uncontrolled movements, visual	1st (-1mt) and 2nd (-2mt) no abnormalities	No abnormalities in daily life, normal neurological exam (14mt), normal	Very first symptoms initially interpreted as confusional migraine

				<p>abnormalities in the right visual field (flashes), dysarthria; then episodes with agitation, emotional instability; then acute word finding troubles and slurred speech, anamnestic problems.</p> <p>Two months after initial symptoms: focal seizures, fluctuating vigilance and mood swings, intermittent agitation, asymmetric muscle tone; then dystonia, ataxia, dyskinesia, orofacial dysfunction, cognitive</p>		<p>cognitive abilities, normal attention, working speed above average, below-average quality of memory of complex figure and copying of complex figure (10mt)</p>	
--	--	--	--	---	--	---	--



				dysfunction, autonomic symptoms, severe sleep disturbance (-2 ½mt)			
9	f	13.3	LZM	Epileptic seizures, increasing speech problems with finally complete motor aphasia, behavioral change (-1mt)	1st no abnormalities (0mt) 2nd no abnormalities (+½mt)	Occasional word-finding difficulties, no abnormalities in neurological examination (4yr, 7mt)	Preexisting language disorder

773

774 \*at the time of EEG registration. \*\*i.e. clinical features at last follow-up.

775 An (A) or (B) indicates if the patient data were collected at the time of or before the EEG registered first or second, respectively.

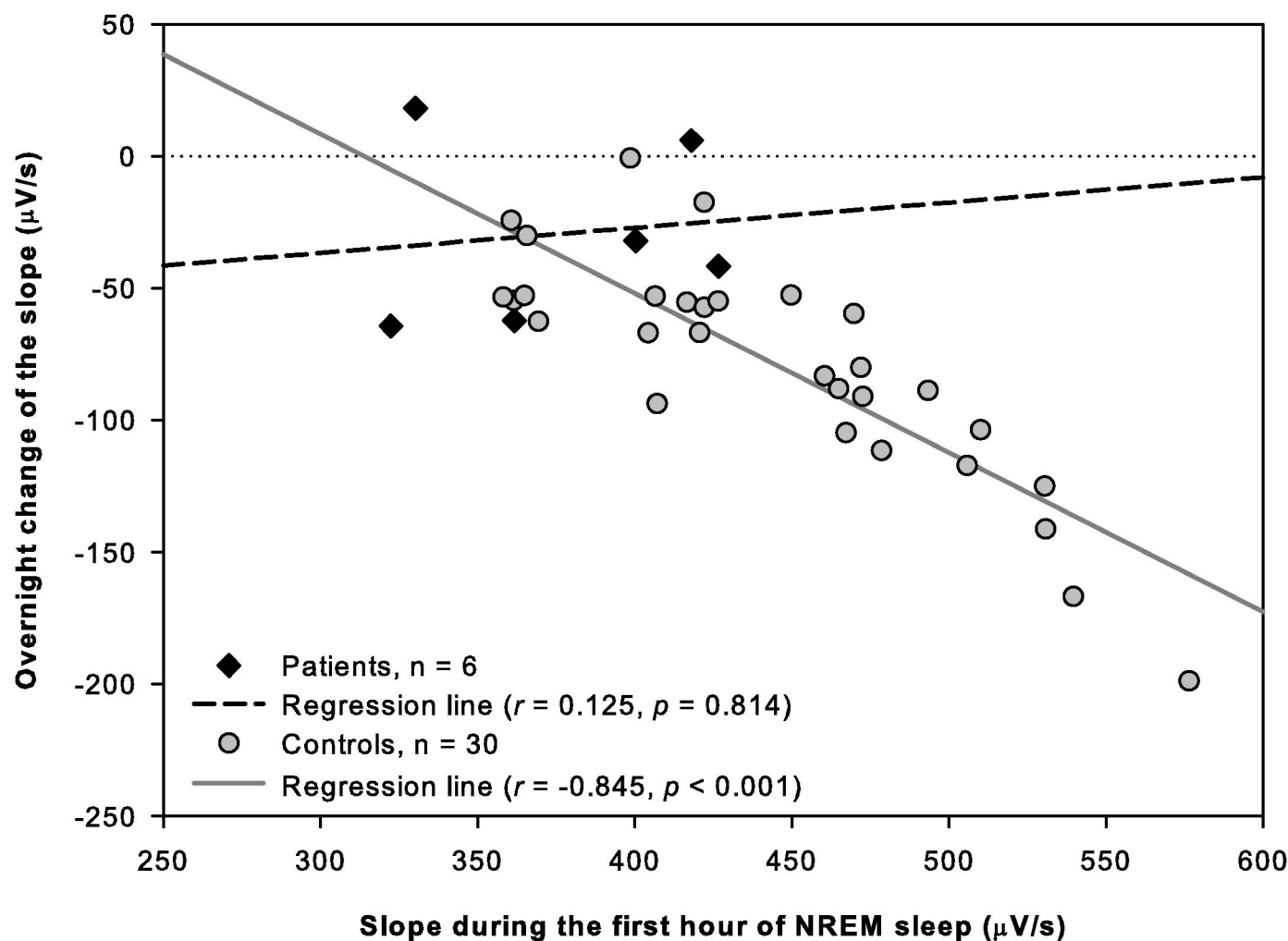
776 Baclofen (Bac), calcium (Ca), chloralhydrate (CHD), clonidine (Clo), corticosteroids (Cort), d (days), diazepam (DZM), enoxaparin (Enox), flunitrazepam  
777 (FZM), gabapentin (GBP), intravenous immunoglobulins (IVIG), levetiracetam (LEV), levomepromazine (LPZ), lorazepam (LZM), magnesium (Mg),  
778 modified Rankin Scale (mRS), month(s) (mt), omeprazole (OPZ), phenobarbitone (Pheno), plasma exchange (PE), risperidone (Risp), rituximab (RTX),  
779 tetrabenazine (TBZ), valproic acid (VPA), vitamin D (ViDe), year(s) (yr).

780

781 **Pediatric mRS**

782 mRS 0 No symptoms at all

783 mRS 1 No significant disabilities despite symptoms in clinical examination; age-appropriate behaviour and further development  
784 mRS 2 Slight disability; unable to carry out all previous activities, but same independence as other age- and sex-matched children (no reduction of levels on  
785 the gross motor function scale)  
786 mRS 3 Moderate disability; requiring some help, but able to walk without assistance; in younger patients, adequate motor development despite mild functional  
787 impairment (reduction of one level on gross motor function scale)  
788 mRS 4 Moderately severe disability; unable to walk without assistance; in younger patients reduction of at least 2 levels on the gross motor function scale  
789 mRS 5 Severe disability; bedridden, requiring constant nursing care and attention  
790 mRS 6 Dead



**A** First to last hour of NREM sleep

