

1 **Title: Performance characteristics of the VIDAS[®] SARS-COV-2 IgM and IgG**
2 **serological assays**

3
4 **Running title: VIDAS[®] SARS-COV-2 IgM and IgG assay performance**

5
6 Nathalie Renard^{a#}, Soizic Daniel^a, Nadège Cayet^a, Matthieu Pecquet^b, Frédérique Raymond^a,
7 Sylvie Pons^c, Julien Lupo^d, Carole Tourneur^a, Catherine Pretis^a, Guillaume Gerez^a, Patrick Blasco^a,
8 Maxime Combe^a, Imen Canova^a, Mylène Lesénéchal^{a#}, Franck Berthier^a

9
10 ^aR&D bioMérieux, 376 Chemin de l'orme, 69280 Marcy l'Etoile, FRANCE

11 ^bLaboratoire de Biologie, Centre Hospitalier Saint Joseph Saint Luc, 20 Quai Claude Bernard,
12 69007 Lyon, FRANCE

13 ^cLaboratoire commun de recherche Hospices Civils de Lyon - bioMérieux, Centre Hospitalier
14 Lyon-Sud, Bâtiment 3F, Chemin du Grand Revoyet, 69310 Pierre-Bénite, FRANCE

15 ^dInstitut de Biologie Structurale (IBS), CEA, CNRS, Université Grenoble-Alpes; Laboratoire de Virologie,
16 Centre hospitalier Universitaire Grenoble-Alpes, CS10217, 38043 Grenoble cedex 09, FRANCE

17
18 [#]Nathalie Renard : Nathalie.RENARD@biomerieux.com

19 [#]Mylène Lesénéchal : mylene.lesenechal@biomerieux.com

20

21 **ABSTRACT**

22 The COVID-19 pandemic, caused by the new severe acute respiratory syndrome coronavirus 2
23 (SARS-CoV-2), continues to spread worldwide. Serological testing for SARS-CoV-2-specific
24 antibodies plays an important role in understanding and controlling the pandemics, notably
25 through epidemiological surveillance. Well validated and highly specific SARS-CoV-2 serological
26 assays are urgently needed. We describe here the analytical and clinical performance of VIDAS®
27 SARS-CoV-2 IgM and VIDAS® SARS-CoV-2 IgG, two CE-marked, EUA-authorized, automated,
28 qualitative assays for the detection of SARS-CoV-2-specific IgM and IgG, respectively. Both
29 assays showed high within-run and within-laboratory precision (coefficients of variation <
30 11.0%) and very low cross-reactivity towards sera of patients with a past common coronavirus
31 or respiratory virus infection. Clinical specificity determined on up to 989 pre-pandemic healthy
32 donors was $\geq 99\%$ with a narrow 95% confidence interval for both IgM and IgG assays. Clinical
33 sensitivity was determined on up to 232 samples from 130 RT-PCR-confirmed SARS-CoV-2
34 patients. The positive percent agreement (PPA) with SARS-CoV-2 PCR reached 100% at ≥ 16 days
35 (VIDAS® SARS-CoV-2 IgM) and ≥ 32 days (VIDAS® SARS-CoV-2 IgG) of symptom onset. Combined
36 IgM/IgG test results improved the PPA compared to each test alone. SARS-CoV-2 IgG
37 seroconversion followed closely that of SARS-CoV-2 IgM and remained stable over time, while
38 SARS-CoV-2 IgM levels rapidly declined. Interestingly, SARS-CoV-2-specific IgM and IgG
39 responses were significantly higher in COVID-19 hospitalized vs. non-hospitalized patients.
40 Altogether, the VIDAS® SARS-CoV-2 IgM and IgG assays are highly specific and sensitive
41 serological tests suitable for the reliable monitoring of past SARS-CoV-2 infections and for
42 seroepidemiology investigations.

43 INTRODUCTION

44 Coronavirus disease 19 (COVID-19) is an infectious disease caused by the newly discovered
45 severe acute respiratory syndrome coronavirus 2 (SARS-CoV-2) (1, 2). Within three months of its
46 emergence in China in December 2019, COVID-19 has been declared a global pandemic by the
47 World Health Organisation (WHO). As of September 25, 2020, nearly 32 million COVID-19 cases
48 and 980,000 deaths have been reported worldwide (3–5). Accurate diagnosis is essential in
49 managing the pandemic, not only to identify, isolate and treat affected patients, but also to
50 characterize the epidemiology of virus transmission and develop national and international
51 surveillance programs. WHO recommends molecular testing of SARS-CoV-2 nucleic acids for
52 acute-phase diagnosis of suspected cases (6–8). Several nucleic acid amplification tests (NAATs),
53 mostly based on quantitative reverse transcriptase polymerase chain reaction (RT-qPCR), have
54 received the Conformité Européenne (CE) mark and have been approved by the United States
55 Food and Drug Administration (FDA) under emergency use authorization (EUA) (9–11). On the
56 other hand, serological testing for SARS-CoV-2-specific antibodies, especially immunoglobulin M
57 (IgM) and immunoglobulin G (IgG), is not recommended for the diagnosis of acute cases. It plays
58 however an essential role in the diagnosis of past SARS-CoV-2 infection and in ongoing
59 immunological and epidemiological surveillance. Serological testing might also complement
60 molecular testing to confirm suspected cases not detected by molecular assays, either due to
61 late (> 7 days after infection) or improper sample collection. Finally, serology screening may
62 allow the identification of convalescent plasma donors for use as potential therapy against
63 COVID-19 (9–21).

64 SARS-CoV-2 serological testing is facing several challenges. Among them, sensitivity and
65 specificity should be well defined for the target population and validated at different post-
66 infection time windows. Specificity is particularly critical in the current pandemic phase, as
67 seroprevalence in the population is still low. In such low-incidence settings, a specificity > 99%
68 and a narrow 95% confidence interval (95% CI) are required to ensure a high positive predictive
69 value (PPV) (11, 22, 23). Accordingly, the antigens used to design serology tests should be
70 properly selected and cross-reactivity with antibodies directed against other antigens, including
71 from other coronaviruses, should be verified. A huge number of serology assays have been
72 developed and marketed in the last few months, of which 38 received FDA's EUA (as of August
73 31, 2020) (24, 25). Clinical performance data of commercial tests are still scant, and examples of
74 poorly performing tests have even been reported (9). Therefore, there is an urgent need for well
75 validated and performant serology tests, notably demonstrating very high specificity.

76 We describe here the analytical and clinical performance of VIDAS® SARS-CoV-2 IgM and VIDAS®
77 SARS-CoV-2 IgG, two CE-marked and EUA-authorized automated qualitative assays for the
78 detection of SARS-CoV-2-specific IgM and IgG, respectively, in serum or plasma. Kinetics of
79 SARS-CoV-2-specific IgM and IgG seroconversion using the VIDAS® SARS-CoV-2 IgM and VIDAS®
80 SARS-CoV-2 IgG assays were also compared in hospitalized and non-hospitalized COVID-19
81 patients.

82 MATERIALS AND METHODS

83 Patients and samples.

84 SARS-CoV-2-positive samples were collected after approval by the French national review board
85 for biomedical research in April 2020 (Comité de Protection des Personnes Sud Méditerranée I,
86 Marseille, France) under the number ID RCB 2020-A00932-37. The international trial registration
87 number in ClinicalTrial.gov is NCT04341142. Informed consent was obtained in accordance with
88 the local regulations. Pre-pandemic samples (from healthy subjects and from donors with other
89 medical conditions) were collected in accordance with the Declaration of Helsinki, as revised in
90 2013. Collected sera and plasma were stored frozen (< -20°C) until further testing.

91 Serum from up to 989 healthy pre-pandemic adult donors collected before September 2019 at
92 two geographical sites (Etablissement Français du Sang (EFS), France; Clinilabs, Inc., United
93 States) were used to determine the assay specificity of the VIDAS® SARS-CoV-2 IgM, IgG and
94 combined IgM/IgG test (defined as negative if both VIDAS® SARS-CoV-2 IgM and IgG assays are
95 negative).

96 For the evaluation of the positive percent agreement (PPA), 405 serum or plasma samples from
97 142 hospitalized and non-hospitalized symptomatic patients diagnosed with COVID-19 and
98 confirmed positive for SARS-CoV-2 by molecular testing (cobas® SARS-CoV-2, Roche
99 09175431190 or Real-time RT-PCR assays for the detection of SARS-CoV-2 Institut Pasteur, Paris
100 (26), performed at the collection site) were collected at three local hospitals (Centre Hospitalier
101 Saint Joseph Saint Luc, Lyon, France; Centre de Ressources Biologiques [CRB] des Hospices Civils
102 de Lyon, CRB Nord and CRB Sud, Lyon, France) between March 31 and June 2, 2020. Samples

103 were tested with the VIDAS® SARS-CoV-2 IgM and IgG assays, and paired measurements were
104 considered for the combined IgM/IgG test results (defined as positive if at least one of the
105 VIDAS® SARS-CoV-2 IgM and/or IgG assays is positive). The PPA was evaluated according to
106 weekly time frames (0-7, 8-15, 16-23, 24-31, ≥ 32 days) relative to the time from RT-PCR positive
107 result and from symptom onset, when documented.

108 For the evaluation of serum cross-reactivity, up to 276 frozen pre-pandemic sera (i.e. negative
109 for SARS-CoV-2) collected from patients with other potentially interfering infections or medical
110 conditions (bioMérieux, Centre Hospitalier Universitaire Grenoble-Alpes and St Joseph St Luc
111 Lyon collections) were tested with the VIDAS® SARS-CoV-2 IgM (276 sera from 33 medical
112 conditions; one to 30 sera per condition) and the VIDAS® SARS-CoV-2 IgG (261 sera from 33
113 medical conditions; two to 30 sera per condition) assays.

114

115 **Serological assays.**

116 VIDAS® SARS-CoV-2 IgM (423833) and VIDAS® SARS-CoV-2 IgG (423834) (bioMérieux, France)
117 are automated qualitative CE-IVD assays developed for the VIDAS® family of instruments and
118 based on a two-step enzyme immunoassay combined with an enzyme-linked fluorescent assay
119 (ELFA) detection technique. The VIDAS® SARS-CoV-2 IgM and VIDAS® SARS-CoV-2 IgG assays are
120 intended for use as an aid to determine if individuals may have been exposed and infected by
121 SARS-CoV-2 and if they have mounted a specific anti-SARS-CoV-2 IgM and IgG immune
122 response. These assays allow the detection of SARS-CoV-2-specific IgM and IgG, respectively,
123 from 100 μ l serum or plasma (lithium heparin). The VIDAS® SARS-CoV-2 IgM and VIDAS® SARS-

124 CoV-2 IgG serological assays were conducted according to the manufacturer's instructions.
125 Briefly, a solid-phase receptacle coated with the antigen (recombinant SARS-CoV-2 receptor-
126 binding domain [RBD] of the viral Spike protein) serves as both solid phase and pipetting device.
127 After the sample dilution step, SARS-CoV-2-specific IgM and IgG are captured on the coated
128 antigen and unbound components are washed out. In a second step, human IgM (VIDAS® SARS-
129 CoV-2 IgM) or IgG (VIDAS® SARS-CoV-2 IgG) are specifically detected by mouse monoclonal
130 antibodies conjugated to alkaline phosphatase and directed against human IgM or IgG,
131 respectively. Unbound components are eliminated by washing and detection is performed by
132 incubation with the substrate (4-Methyl-umbelliferyl phosphate) followed by measurement of
133 the fluorescent product (4-Methyl-umbelliferone) at 450 nm. A relative fluorescence value (RFV)
134 is generated (background reading subtracted from the final fluorescence reading). The assay is
135 conducted with a standard (S1) and a positive control (C1) that contains humanized
136 recombinant anti-SARS-CoV-2 antibody, either IgM or IgG depending on the assay. A negative
137 control (C2) is also supplied. The results are automatically calculated by the instrument,
138 according to the S1 standard, and an index value (i) is obtained (where $i = \text{RFV}_{\text{sample}} / \text{RFV}_{\text{S1}}$). The
139 test is interpreted as negative when $i < 1.00$ and positive when $i \geq 1.00$. The positivity cut-off
140 values for the IgM and IgG tests were determined from a healthy pre-pandemic cohort (259
141 [IgM test] and 120 [IgG test] samples collected prior to August 2019), using non-parametric 99th
142 percentile because of normality rejection for the IgM positivity cut-off and using the (99,99)
143 tolerance intervals approach after Box-Cox transformation (27) for the IgG positivity cut-off (99th
144 percentile index values at a 99% confidence level) (data not shown).

145

146

147

148 **Statistical analysis.**

149 IgG positivity cut-off values were determined by the tolerance intervals approach (28) and the
150 parametric method using the Analyse-it 5.40 and JMP 13.1.0 software. IgM positivity cut-off
151 values were determined by the non-parametric 99th percentile using the Analyse-it 5.40
152 software.

153 Assay precision (repeatability or within-run precision, and within-laboratory precision) were
154 evaluated according to the Clinical & Laboratory Standards Institute (CLSI) EP05-A3 guideline
155 (29) by the variance component method and restricted maximum likelihood (REML) using the
156 SAS Enterprise Guide 7.13 HF8 software.

157 Specificity and sensitivity (PPA) estimates were evaluated according to the CLSI EP12-A2
158 guideline (30). The 95% confidence intervals (95% CI) were computed (either as score
159 confidence interval if the specificity or sensitivity (PPA) belonged to] 5 ; 95[%, or as exact
160 confidence interval otherwise) using the SAS Enterprise Guide 7.13 HF8 software.

161 PPA was evaluated per time windows (in days) relative to the day of RT-PCR positive result and
162 of symptom onset (when documented). Only one patient's measurement per time period was
163 included in the analysis. In case of multiple patient's measurements in one period, the first
164 available measurement was considered for the calculation.

165 The positive predictive value (PPV) and the negative predictive value (NPV) were calculated
166 assuming a prevalence of 5%, as recommended by FDA for the EUA application (25), and the

167 respective 95% CI were computed according to Mercaldo et al. (31) using the SAS Enterprise
168 Guide 7.13 HF8 software.

169 VIDAS® SARS-CoV-2 index values were displayed per time frame as Tukey box plots showing
170 median values (horizontal line), interquartile ranges (IQR: Q3-Q1), lower and upper whiskers
171 (Q1-1.5xIQR and Q3+1.5xIQR respectively) and outliers (below Q1-1.5xIQR and above
172 Q3+1.5xIQR; black dots). Two-group comparisons of index values per time frame between
173 hospitalized and non-hospitalized patients were performed using the nonparametric two-tailed
174 Mann-Whitney *U*-test (MWU-test) with normal approximation. The Bonferroni method was
175 applied for controlling the 5% overall probability of a false-significant result when multiple
176 comparisons were carried out; given that three comparisons were performed, *P*-values < 0.017
177 (one third of 0.05) were considered statistically significant.

178

179 **RESULTS**

180 **Analytical performance of VIDAS[®] SARS-CoV-2 IgM and IgG assays**

181 Within-run and within-laboratory precisions of the ELFA-based tests were determined using
182 three samples (one negative and two positive for SARS-CoV-2 IgM and IgG). Samples were run in
183 triplicate on one VIDAS[®] instrument, twice a day over 10 days (with an instrument calibration
184 every second day), using one assay lot, thus generating 60 measurement values per sample. The
185 coefficient of variation (%CV) for repeatability (within-run precision) did not exceed 9.3% and
186 5.9% for the VIDAS[®] SARS-CoV-2 IgM and IgG assays, respectively. The %CV for within-laboratory
187 precision was also low, reaching a maximum of 10.7% and 6.9% for the VIDAS[®] SARS-CoV-2 IgM
188 and IgG assays, respectively (Table 1).

189 Analytical specificity and sensitivity of the VIDAS[®] SARS-CoV-2 IgM and IgG assays were verified
190 through various experiments. First, we ruled out a possible cross-reactivity of the anti-human-
191 IgM (VIDAS[®] SARS-CoV-2 IgM) or of the anti-human-IgG (VIDAS[®] SARS-CoV-2 IgG) with human
192 IgG or IgM, respectively, which might produce false-positive results. Spike-in experiments in
193 negative samples using either human recombinant monoclonal anti-SARS-CoV-2 IgG (in the
194 VIDAS[®] SARS-CoV-2 IgM assay) or human recombinant monoclonal anti-SARS-CoV-2 IgM (in the
195 VIDAS[®] SARS-CoV-2 IgG assay) demonstrated neither reactivity of the alkaline-phosphatase-
196 conjugated anti-human-IgM toward human IgG nor reactivity of the anti-human-IgG toward
197 human IgM (data not shown). Second, we ruled out a possible competition between anti-SARS-
198 CoV-2 IgM and IgG for binding to the coated SARS-CoV-2 antigen, which might interfere with the
199 respective assays and generate false-negative results. Spike-in experiments in positive samples
200 using increasing amounts of human recombinant monoclonal anti-SARS-CoV-2 IgG (in the

201 VIDAS[®] SARS-CoV-2 IgM assay) or of human recombinant monoclonal anti-SARS-CoV-2 IgM (in
202 the VIDAS[®] SARS-CoV-2 IgG assay) did not impact the test results (data not shown). Third, we
203 evaluated the impact of serum inactivation (56°C for 30 minutes), which might be applied by
204 diagnostics laboratories to inactivate potentially infectious samples (32), on test results of
205 negative and positive samples. Heat inactivation affected significantly VIDAS[®] SARS-CoV-2 IgM
206 and IgG assay outcome (data not shown) and should therefore be avoided. Finally, we evaluated
207 the possible cross-reactivity of components of the assay (SARS-CoV-2 antigen RBD or
208 immunoglobulins) with human sera from patients with other infections (including other
209 coronaviruses) or medical conditions (e.g. rheumatoid factor) (33) that might interfere with the
210 assay and yield false-positive results. Up to 276 (VIDAS[®] SARS-CoV-2 IgM) and 261 (VIDAS[®] SARS-
211 CoV-2 IgG) sera of SARS-CoV-2-negative patients with other infections or conditions were tested
212 and the number of positive test results was evaluated (Table 2). None of the 18 sera of patients
213 with an history of infection with the human coronaviruses CoV-NL63, CoV-229E, CoV-HKU1 or
214 CoV-OC43 (genera *Alphacoronavirus* and *Betacoronavirus*) were positive in the VIDAS[®] SARS-
215 CoV-2 IgG assay, while the serum of one CoV-NL63-positive patient was positive in the VIDAS[®]
216 SARS-CoV-2 IgM assay. Only two out of 261 (0.8%) tested sera were positive in the VIDAS[®] SARS-
217 CoV-2 IgG assay. They belonged to a HIV-positive and a respiratory syncytial virus (RSV A)-
218 positive patient, respectively. On the other hand, ten out of 276 (3.6%) tested sera were
219 positive in the VIDAS[®] SARS-CoV-2 IgM assay. Apart from the one CoV-NL63-positive sample
220 mentioned above, six sera were from patients presenting autoantibodies (antinuclear antibody,
221 rheumatoid factor), two were from patients with an history of parasite infection (*Plasmodium*
222 *falciparum*, *Trypanosoma cruzi*), and one from a past Rhinovirus/Enterovirus infection. None of

223 the sera from patients infected with other respiratory viruses, including influenza virus,
224 parainfluenza virus, metapneumovirus or adenovirus were reactive.

225

226 **Clinical performance of VIDAS[®] SARS-COV-2 IgM and IgG assays**

227 The clinical specificity of the VIDAS[®] SARS-CoV-2 IgM and IgG assays were assessed using sera
228 from 989 pre-pandemic healthy volunteers collected in France and in the United States before
229 September 2019. All 989 sera were tested with the VIDAS[®] SARS-CoV-2 IgG assay, while 308
230 samples were tested with the VIDAS[®] SARS-CoV-2 IgM assay. The combined IgM/IgG assay
231 specificity (defined as both VIDAS[®] SARS-CoV-2 IgM and IgG assays being negative) was
232 determined on 308 paired VIDAS[®] SARS-CoV-2 IgM and IgG tests (Table S1 and Table 3).
233 306/308 (VIDAS[®] SARS-CoV-2 IgM) and 988/989 (VIDAS[®] SARS-CoV-2 IgG) SARS-CoV-2-negative
234 sera were negative, corresponding to a specificity (95% CI) of 99.4% (97.7-99.9%) and 99.9%
235 (99.4-100%) for the VIDAS[®] SARS-CoV-2 IgM and IgG assays, respectively (Table 3). The
236 specificity (95% CI) of the VIDAS[®] SARS-CoV-2 IgG test on the common cohort (N=308) was
237 100.0% (98.8-100.0%). The specificity (95% CI) of the combined IgM and IgG serology tests
238 (306/308 tests negative in both assays) was 99.4% (97.7-99.9%) (Table 3).

239 The clinical sensitivity of the VIDAS[®] SARS-CoV-2 IgM and IgG assays was assessed using 405
240 samples collected from 142 patients confirmed positive for SARS-CoV-2 by RT-PCR. The positive
241 percent agreement (PPA) of the serology tests with the RT-PCR test results was calculated per
242 weekly time windows (0-7, 8-15, 16-23, 24-31 and ≥ 32 days) relative to the time from the PCR-
243 positive result and to the time from symptom onset. No more than one patient sample per time

244 window was included in the calculation (Fig. 1 and Table S2). The PPA calculated on all available
245 samples for the VIDAS[®] SARS-CoV-2 IgM and IgG assays are shown in Tables S3 and S4,
246 respectively. For the sake of comparability, the PPA of the IgM, IgG and combined IgM/IgG test
247 results was also calculated on paired samples (i.e. tested with both the IgM and IgG assays;
248 Tables 4 and 5).

249 The PPA (95% CI) from the time of RT-PCR-positive test results raised from 44.5% (35.6-53.9%)
250 and 45.5% (36.5-54.8%) at 0-7 days, to 81.7% (70.1-89.4%) and 88.3% (77.8-94.2%) at 8-15 days,
251 to 81.6% (66.6-90.8%) and 94.7% (82.7-98.5%) at 16-23 days, to 100.0% (75.3-100.0%) and
252 100.0% (75.3-100.0%) at 24-31 days, and to 81.8% (52.3-94.9%) and 100.0% (71.5-100.0%) at ≥
253 32 days for the VIDAS[®] SARS-CoV-2 IgM and IgG assays, respectively (Table 4). The PPA (95% CI)
254 of the combined IgM and IgG serology tests (positive in at least one of the IgM and/or IgG
255 assays) from the time of RT-PCR-positive test results, increased from 53.6% (44.4-62.7%) at 0-7
256 days, to 95.0% (86.1-99.0%) at 8-15 days, up to 100.0% at 16-23 days, 24-31 days and ≥ 32 days
257 (with respective 95% CI of 90.7-100.0%, 75.3-100.0% and 71.5-100.0%) (Table 4). The PPA (95%
258 CI) evaluated relative to the time of symptom onset raised from 31.8% (16.4-52.7%) and 31.8%
259 (16.4-52.7%) at 0-7 days, to 82.8% (65.5-92.4%) and 86.2% (69.4-94.5%) at 8-15 days, to 100.0%
260 (86.8-100.0%) and 96.2% (80.4-99.9%) at 16-23 days, to 100.0% (81.5-100.0%) and 94.4% (74.2-
261 99.0%) at 24-31 days, and to 100.0% (69.2-100.0%) and 100.0% (69.2-100.0%) at ≥ 32 days for
262 the VIDAS[®] SARS-CoV-2 IgM and IgG assays, respectively (Table 5). The PPA (95% CI) of the
263 combined IgM and IgG serology test results from the time of symptom onset, increased from
264 36.4% (19.7-57.0%) at 0-7 days, to 89.7% (73.6-96.4%) at 8-15 days, up to 100.0% at 16-23 days,

265 24-31 days and ≥ 32 days (with respective 95% CI of 86.8-100.0%, 81.5-100.0% and 69.2-100.0%)
266 (Table 5).

267 Based on the specificity and sensitivity (i.e. PPA) determined on paired IgM and IgG testing
268 (N=308 for specificity; N=105 for PPA), the negative predictive value (NPV) and the positive
269 predictive value (PPV) were calculated at 5% prevalence (25), according to the time after
270 symptom onset (Table 6). The NPV was high for both the VIDAS[®] SARS-CoV-2 IgM and IgG
271 assays, whether considered alone or in combination; NPV was $\geq 96.5\%$ (lower 95% confidence
272 limits $\geq 95.4\%$) at 0-7 days post symptom onset and NPV increased from 99.1% to 100.0% (lower
273 95% confidence limits $\geq 98.0\%$) from day 8 onwards following symptom onset. The PPV of the
274 VIDAS[®] SARS-CoV-2 IgG assay was 100% at all time frames considered. Of note, the PPV
275 calculated using the full data set for the VIDAS[®] SARS-CoV-2 IgG specificity determination
276 (N=989) was slightly lower, increasing from 94.3% at 0-7 days to 98.1% at ≥ 32 days (Table S5).
277 The PPV (95% CI) of the VIDAS[®] SARS-CoV-2 IgM assay was lower, ranging from 72.1% (36.3-
278 92.1%) at 0-7 days to 89.0% (67.1-97.0%) from day 16 onwards following symptom onset (Table
279 6). The combination of IgM and IgG test results slightly improved the PPV and NPV of the SARS-
280 CoV-2 IgM assay, and the NPV of the SARS-CoV-2 IgG assay. The SARS-CoV-2 IgG assay
281 performed best alone in terms of PPV (Table 6).

282

283 **Longitudinal study of IgM and IgG seroconversion in hospitalized COVID-19 patients**

284 The global distribution of VIDAS[®] SARS-CoV-2 IgM and IgG index values post symptom onset was
285 compared among the 105 SARS-CoV-2-positive patients described in Table 5 (Fig. 2). IgM index

286 values increased from the second week of symptom onset (8-15 days) and peaked during the
287 third week (16-23 days) before decreasing. In comparison, the IgG index values strongly
288 increased from the second week of symptom onset and seemed to reach a plateau ≥ 32 days
289 post symptom onset (Fig. 2).

290 The VIDAS[®] SARS-CoV-2 IgM and IgG index values were also compared between hospitalized
291 and non-hospitalized patients. Since the date of symptom onset was not documented in non-
292 hospitalized patients (Table S2), the index values were compared relative to the time of the RT-
293 PCR-positive results (Fig. 3). Interestingly, the distribution of index values between hospitalized
294 and non-hospitalized patients differ statistically from each other for both the VIDAS[®] SARS-CoV-
295 2 IgM and IgG assays at the three compared time frames (0-7, 8-15 and 16-23 days post PCR-
296 positive test; MWU-test p-values < 0.017). Median index values were higher in hospitalized
297 versus non-hospitalized patients (Fig. 3).

298 Finally, IgM and IgG seroconversion was further investigated in four selected hospitalized
299 patients with either early and/or repeated measurements over an extended period of time (up
300 to 74 days post symptom onset; Fig. 4). IgG seroconversion closely followed IgM seroconversion
301 in the second week of symptom onset (Fig. 4A-B), in line with the global profile shown in Figure
302 2. SARS-CoV-2 IgM index rapidly decreased concomitantly with the increase of SARS-CoV-2 IgG
303 index (Fig. 4B-D). In the three patients shown in Fig. 4B-D, SARS-CoV-2 IgM index decreased
304 below the positivity cutoff (index = 1.00) 46 days after symptom onset. In contrast, SARS-CoV-2
305 IgG index values remained high and stable from approximately day 20 onward after symptom
306 onset, at least up to 74 days.

307

308 **DISCUSSION**

309

310 We describe here the analytical and clinical performance of the VIDAS[®] SARS-CoV-2 IgM and IgG
311 assays. We demonstrate that both assays show high precision, and excellent analytical and
312 clinical performances.

313 The rate of cross-reactivity with non-specific antibodies, including those of patients infected
314 with other coronaviruses, was very low in both VIDAS[®] SARS-CoV-2 IgM and IgG assays. This
315 weak cross-reactivity with other coronaviruses antibodies is likely due, at least in part, to the
316 choice of the receptor-binding domain (RBD) of the viral Spike protein as SARS-CoV-2-specific
317 antigen. The RBD shows a high sensitivity in ELISA, higher than that of the SARS-CoV-2 S1 or NC
318 antigens (34–38). It also presents a weaker homology and significant structural divergences with
319 the RBD of other coronaviruses (39–42). Another advantage of using the RBD is that the viral
320 antigen generates neutralizing antibodies likely to provide protective immunity (41–48), as
321 previously demonstrated for SARS-CoV-1 (49–51). Beside its strong immunogenicity and
322 antigenicity, the RBD of SARS-CoV-1 has been shown to elicit antibody responses that persisted
323 many years after infection (44, 51), raising the possibility that it might also be the case for the
324 RBD of SARS-CoV-2. Recent studies in COVID-19 patients, notably in convalescent donors (52–
325 54), on the anti-RBD antibody dynamics post SARS-CoV-2 infection (45, 46), or demonstrating
326 the persistence and expansion of SARS-CoV-2-specific memory lymphocytes (55), as well as the
327 stability of the IgG response detected with the VIDAS[®] SARS-CoV-2 IgG assay up to 74 days post-
328 symptom onset in the present study, strongly support this proposition. Hence, a serology test
329 such as the VIDAS[®] SARS-CoV-2 IgG assay is likely to be suitable for the detection of protective

330 immunity and the evaluation of the efficacy of future vaccines, which are mainly based on the
331 RBD-containing Spike protein (56, 57).

332 The low cross-reactivity rate with non-specific sera probably explains the very high specificity (\geq
333 99%) and narrow 95% CI of both VIDAS[®] SARS-CoV-2 IgM and IgG assays. The VIDAS[®] SARS-CoV-2
334 IgG assay alone had a specificity close to 100%, slightly higher than that of the VIDAS[®] SARS-CoV-
335 2 IgM assay.

336 The clinical sensitivity of the VIDAS[®] SARS-CoV-2 assays was evaluated in SARS-CoV-2-confirmed
337 symptomatic cases and was determined as positive percent agreement (PPA) with the RT-PCR
338 assay, at successive time frames post positive PCR and, alternatively, post symptom onset. The
339 PPA reached 100% at 16-23 days (VIDAS[®] SARS-CoV-2 IgM) and at \geq 32 days (VIDAS[®] SARS-CoV-2
340 IgG) post-symptom onset. The combined VIDAS[®] SARS-CoV-2 IgM/IgG test evaluation improved
341 the PPA of the respective IgM and IgG tests by 3.5 to 6.9 percent points during the first two
342 weeks (0-7 and 8-15 days) of symptom onset. Such improved sensitivity of the combined
343 IgM/IgG tests early after symptom onset might also be useful for the diagnosis of suspected
344 COVID-19 cases with negative PCR (13–15, 17, 19–21).

345 Overall, the clinical performance of the VIDAS[®] SARS-CoV-2 assays was excellent. It
346 outperformed or was similar to that reported for existing EUA serological assays (25, 38, 58–66).
347 The high specificity of the VIDAS[®] SARS-CoV-2 IgG assay alone should be well suited for
348 epidemiological surveillance.

349

350 The kinetics of SARS-CoV-2 IgM and IgG seroconversion was also evaluated by monitoring
351 VIDAS® index values over time. VIDAS® SARS-CoV-2 IgM and IgG index values increased in the
352 second week after symptom onset. IgG index values strongly increased and remained high, as
353 IgM index values rapidly declined. These profiles are in agreement with those described in
354 recent publications (13, 34, 45, 46, 67–72). Interestingly, the magnitude of the antibody
355 response (index values) correlated with disease severity, as it was significantly higher in
356 hospitalized vs. non-hospitalized COVID-19 patients at the time frames investigated (0-7, 18-15
357 and 16-23 days after a PCR-positive test). This observation is in agreement with published
358 reports (11, 46, 72–75).

359
360 This study presents several limitations. First, assay sensitivity was evaluated on confirmed but
361 not on suspected SARS-CoV-2 cases (i.e. patients with symptoms but negative by PCR). It would
362 be interesting to evaluate and confirm the benefit of SARS-CoV-2 IgM and IgG serology to
363 complement PCR testing (13, 14, 20, 21). On the other hand, recent reports suggested that the
364 identification rate of false-negative PCR results using serology testing might be marginal,
365 between ~1% (23) and ~4% (72). Second, assay sensitivity was determined on symptomatic
366 (hospitalized and non-hospitalized) COVID-19 patients. The sensitivity of the VIDAS® SARS-CoV-2
367 IgM and IgG assays in asymptomatic SARS-CoV-2-infected individuals, who may represent most
368 of the infected patients, remains to be evaluated.

369

370 In conclusion, the VIDAS® SARS-CoV-2 IgM and IgG assays are highly sensitive and specific assays
371 for reliable patient monitoring after acute SARS-CoV-2 infections (and likely after vaccination,
372 when available). Moreover, the VIDAS® SARS-CoV-2 IgG assay fulfils the specificity requirement
373 for its use in seroepidemiology studies and is well suited for the detection of past SARS-CoV-2
374 infections. Further studies are necessary to evaluate its suitability for the detection of SARS-
375 CoV-2 neutralizing antibodies and to define correlates of immune protection.

376 **ACKNOWLEDGMENTS**

377 This work was supported by bioMérieux. We thank the Etablissement Français du Sang, notably
378 Yves Mérieux, for providing samples. We thank all the members of R&D Immunoassay
379 bioMérieux who took part in this work, i.e. the bioMolecule Engineering team, Prototyping,
380 Development and Verification teams. We warmly thank Nadia Piga and the biobank team for
381 collecting the samples in a short time frame. We are grateful to the bioMérieux Data Sciences
382 team for the calculations and statistical evaluation of the data, and to Victor Bondanese,
383 Laurence Bridon and the Clinical Affairs team of bioMérieux for their help and technical support.
384 We thank Karen Brengel for her useful advices as well as Alice Banz for critically reading the
385 manuscript. The authors thank Dr. Anne Rascle of AR Medical Writing (Regensburg, Germany)
386 for providing medical writing support, which was funded by bioMérieux (Marcy L'Etoile, France)
387 in accordance with Good Publication Practice (GPP3) guidelines (<http://www.ismpp.org/gpp3>).

388

389 Conflict of interests' statement

390 JL declares received research funding from bioMérieux for this study.

391 MP declares a consulting contract with bioMérieux.

392 NR, SD, ND, FR, SP, CT, CP, GG, PB, MC, IC, ML and FB are employees from bioMérieux, an *in*
393 *vitro* diagnostic company.

394

395 Contributions

396 NR, SD, ML, CT, FB conceived the study; CP, GG, PB, MC conceived the study and performed the
397 serological assays. FR, SP, MP, JL collected patients' samples; NC, IC, NR, CT, ML, interpreted
398 the serological assays; all authors contributed to data acquisition, data analysis, and/or data
399 interpretation, and all authors reviewed and approved the final manuscript.

400

401 **REFERENCES**

- 402 1. Zhou P, Yang X-L, Wang X-G, Hu B, Zhang L, Zhang W, Si H-R, Zhu Y, Li B, Huang C-L, Chen H-D, Chen J,
403 Luo Y, Guo H, Jiang R-D, Liu M-Q, Chen Y, Shen X-R, Wang X, Zheng X-S, Zhao K, Chen Q-J, Deng F, Liu
404 L-L, Yan B, Zhan F-X, Wang Y-Y, Xiao G-F, Shi Z-L. 2020. A pneumonia outbreak associated with a new
405 coronavirus of probable bat origin. *Nature* 579:270–273.
- 406 2. Coronaviridae Study Group of the International Committee on Taxonomy of Viruses. 2020. The
407 species Severe acute respiratory syndrome-related coronavirus: classifying 2019-nCoV and naming it
408 SARS-CoV-2. *Nat Microbiol* 5:536–544.
- 409 3. World Health Organization. 2020. Coronavirus Disease (COVID-19) Situation Reports.
410 <https://www.who.int/emergencies/diseases/novel-coronavirus-2019/situation-reports>. Accessed:
411 September 25, 2020.
- 412 4. Dong E, Du H, Gardner L. 2020. An interactive web-based dashboard to track COVID-19 in real time.
413 *Lancet Infect Dis* 20:533–534.
- 414 5. Johns Hopkins University. 2020. COVID-19 Resource Center. <https://coronavirus.jhu.edu/map.html>.
415 Accessed: September25, 2020.
- 416 6. World Health Organization. 2020. Laboratory testing for 2019 novel coronavirus (2019-nCoV) in
417 suspected human cases. <https://www.who.int/publications-detail-redirect/10665-331501>. Accessed:
418 September 25, 2020.
- 419 7. World Health Organization. 2020. Global surveillance for COVID-19 caused by human infection with
420 COVID-19 virus: interim guidance. <https://www.who.int/publications-detail-redirect/global->

- 421 surveillance-for-covid-19-caused-by-human-infection-with-covid-19-virus-interim-guidance.
422 Accessed: August 20, 2020.
- 423 8. World Health Organization. 2020. Laboratory testing strategy recommendations for COVID-19:
424 interim guidance. [https://www.who.int/publications-detail-redirect/laboratory-testing-strategy-](https://www.who.int/publications-detail-redirect/laboratory-testing-strategy-recommendations-for-covid-19-interim-guidance)
425 [recommendations-for-covid-19-interim-guidance](https://www.who.int/publications-detail-redirect/laboratory-testing-strategy-recommendations-for-covid-19-interim-guidance). Accessed: August 20, 2020.
- 426 9. Vashist SK. 2020. In Vitro Diagnostic Assays for COVID-19: Recent Advances and Emerging Trends.
427 *Diagnostics* 10:202.
- 428 10. Venter M, Richter K. 2020. Towards effective diagnostic assays for COVID-19: a review. *J Clin Pathol*
429 [jclinpath-2020-206685](https://doi.org/10.1136/jclinpath-2020-206685).
- 430 11. Bohn MK, Lippi G, Horvath A, Sethi S, Koch D, Ferrari M, Wang C-B, Mancini N, Steele S, Adeli K.
431 2020. Molecular, serological, and biochemical diagnosis and monitoring of COVID-19: IFCC taskforce
432 evaluation of the latest evidence. *Clinical Chemistry and Laboratory Medicine (CCLM)* 58:1037–1052.
- 433 12. Winter AK, Hegde ST. 2020. The important role of serology for COVID-19 control. *The Lancet*
434 *Infectious Diseases* S1473309920303224.
- 435 13. Guo L, Ren L, Yang S, Xiao M, Chang D, Yang F, Dela Cruz CS, Wang Y, Wu C, Xiao Y, Zhang L, Han L,
436 Dang S, Xu Y, Yang Q, Xu S, Zhu H, Xu Y, Jin Q, Sharma L, Wang L, Wang J. 2020. Profiling Early
437 Humoral Response to Diagnose Novel Coronavirus Disease (COVID-19). *Clin Infect Dis*
438 <https://doi.org/10.1093/cid/ciaa310>.
- 439 14. Zhao R, Li M, Song H, Chen J, Ren W, Feng Y, Gao GF, Song J, Peng Y, Su B, Guo X, Wang Y, Chen J, Li
440 J, Sun H, Bai Z, Cao W, Zhu J, Zhang Q, Sun Y, Sun S, Mao X, Su J, Chen X, He A, Gao W, Jin R, Jiang Y,

- 441 Sun L. 2020. Early detection of SARS-CoV-2 antibodies in COVID-19 patients as a serologic marker of
442 infection. *Clinical Infectious Diseases* ciaa523.
- 443 15. Caruana G, Croxatto A, Coste AT, Opota O, Lamoth F, Jatton K, Greub G. 2020. Diagnostic strategies
444 for SARS-CoV-2 infection and interpretation of microbiological results. *Clinical Microbiology and*
445 *Infection* 26:1178–1182.
- 446 16. Clapham H, Hay J, Routledge I, Takahashi S, Choisy M, Cummings D, Grenfell B, Metcalf CJE, Mina M,
447 Barraquer IR, Salje H, Tam CC. 2020. Seroepidemiologic Study Designs for Determining SARS-COV-2
448 Transmission and Immunity. *Emerg Infect Dis* 26:1978–1986.
- 449 17. Espejo AP, Akgun Y, Al Mana AF, Tjendra Y, Millan NC, Gomez-Fernandez C, Cray C. 2020. Review of
450 Current Advances in Serologic Testing for COVID-19. *American Journal of Clinical Pathology* 154:293–
451 304.
- 452 18. Pancrazzi A, Magliocca P, Lorubbio M, Vaggelli G, Galano A, Mafucci M, Duranti D, Cortesi M,
453 Mazzeschi E, Fabbroni S, Viti G, Tartaglia Polcini A, Tripodo E, Sanchini P, Gervino S, Tacconi D, Dei S,
454 Mazzierli M, D'Urso A, Ognibene A. 2020. Comparison of serologic and molecular SARS-CoV 2 results
455 in a large cohort in Southern Tuscany demonstrates a role for serologic testing to increase diagnostic
456 sensitivity. *Clinical Biochemistry* S0009912020307918.
- 457 19. Wang P. 2020. Combination of serological total antibody and RT-PCR test for detection of SARS-COV-
458 2 infections. *Journal of Virological Methods* 283:113919.
- 459 20. Zhang J, Zhang X, Liu J, Ban Y, Li N, Wu Y, Liu Y, Ye R, Liu J, Li X, Li L, Qin X, Zheng R. 2020. Serological
460 detection of 2019-nCoV respond to the epidemic: A useful complement to nucleic acid testing. *Int*
461 *Immunopharmacol* 88:106861.

- 462 21. Liu R, Liu X, Yuan L, Han H, Shereen MA, Zhen J, Niu Z, Li D, Liu F, Wu K, Luo Z, Zhu C. 2020. Analysis
463 of adjunctive serological detection to nucleic acid test for severe acute respiratory syndrome
464 coronavirus 2 (SARS-CoV-2) infection diagnosis. *Int Immunopharmacol* 86:106746.
- 465 22. Bryant JE, Azman AS, Ferrari MJ, Arnold BF, Boni MF, Boum Yap, Hayford K, Luquero FJ, Mina MJ,
466 Rodriguez-Barraquer I, Wu JT, Wade D, Vernet G, Leung DT. 2020. Serology for SARS-CoV-2:
467 Apprehensions, opportunities, and the path forward. *Sci Immunol* 5:eabc6347.
- 468 23. Farnsworth CW, Anderson NW. 2020. SARS-CoV-2 Serology: Much Hype, Little Data. *Clinical*
469 *Chemistry* hvaa107.
- 470 24. U.S. Food and Drug Administration. 2020. In Vitro Diagnostics EUAs. [https://www.fda.gov/medical-](https://www.fda.gov/medical-devices/coronavirus-disease-2019-covid-19-emergency-use-authorizations-medical-devices/vitro-diagnostics-euas)
471 [devices/coronavirus-disease-2019-covid-19-emergency-use-authorizations-medical-devices/vitro-](https://www.fda.gov/medical-devices/coronavirus-disease-2019-covid-19-emergency-use-authorizations-medical-devices/vitro-diagnostics-euas)
472 [diagnostics-euas](https://www.fda.gov/medical-devices/coronavirus-disease-2019-covid-19-emergency-use-authorizations-medical-devices/vitro-diagnostics-euas). Accessed: August 20, 2020.
- 473 25. U.S. Food and Drug Administration. 2020. EUA Authorized Serology Test Performance.
474 [https://www.fda.gov/medical-devices/coronavirus-disease-2019-covid-19-emergency-use-](https://www.fda.gov/medical-devices/coronavirus-disease-2019-covid-19-emergency-use-authorizations-medical-devices/eua-authorized-serology-test-performance)
475 [authorizations-medical-devices/eua-authorized-serology-test-performance](https://www.fda.gov/medical-devices/coronavirus-disease-2019-covid-19-emergency-use-authorizations-medical-devices/eua-authorized-serology-test-performance). Accessed: August 31,
476 2020.
- 477 26. World Health Organization. Real-time RT-PCR assays for the detection of SARS-CoV-2 Institut
478 Pasteur, Paris. [https://www.who.int/nepal/activities/supporting-elimination-of-kala-azar-as-a-](https://www.who.int/nepal/activities/supporting-elimination-of-kala-azar-as-a-public-health-problem/docs/default-source/coronaviruse/real-time-rt-pcr-assays-for-the-detection-of-sars-cov-2-institut-pasteur-paris)
479 [public-health-problem/docs/default-source/coronaviruse/real-time-rt-pcr-assays-for-the-detection-](https://www.who.int/nepal/activities/supporting-elimination-of-kala-azar-as-a-public-health-problem/docs/default-source/coronaviruse/real-time-rt-pcr-assays-for-the-detection-of-sars-cov-2-institut-pasteur-paris)
480 [of-sars-cov-2-institut-pasteur-paris](https://www.who.int/nepal/activities/supporting-elimination-of-kala-azar-as-a-public-health-problem/docs/default-source/coronaviruse/real-time-rt-pcr-assays-for-the-detection-of-sars-cov-2-institut-pasteur-paris). Accessed: August 20, 2020.
- 481 27. Dong X, Tsong Y, Shen M. 2015. Statistical considerations in setting product specifications. *J*
482 *Biopharm Stat* 25:280–294.

- 483 28. Dong X, Tsong Y, Shen M, Zhong J. 2015. Using Tolerance Intervals for Assessment of Pharmaceutical
484 Quality. *Journal of Biopharmaceutical Statistics* 25:317–327.
- 485 29. Clinical & Laboratory Standards Institute. EP05-A3: Evaluating Quantitative Measurement Precision,
486 3rd Edition. <https://clsi.org/standards/products/method-evaluation/documents/ep05/>. Accessed:
487 August 20, 2020.
- 488 30. Clinical & Laboratory Standards Institute. EP12-A2: User Protocol for Evaluation of Qualitative Test
489 Performance, 2nd Edition. [https://clsi.org/standards/products/method-](https://clsi.org/standards/products/method-evaluation/documents/ep12/)
490 [evaluation/documents/ep12/](https://clsi.org/standards/products/method-evaluation/documents/ep12/). Accessed: August 20, 2020.
- 491 31. Mercaldo ND, Lau KF, Zhou XH. 2007. Confidence intervals for predictive values with an emphasis to
492 case-control studies. *Stat Med* 26:2170–2183.
- 493 32. Pastorino B, Touret F, Gilles M, de Lamballerie X, Charrel RN. 2020. Heat Inactivation of Different
494 Types of SARS-CoV-2 Samples: What Protocols for Biosafety, Molecular Detection and Serological
495 Diagnostics? *Viruses* 12:735.
- 496 33. Tate J, Ward G. 2004. Interferences in immunoassay. *Clin Biochem Rev* 25:105–120.
- 497 34. Ma H, Zeng W, He H, Zhao D, Yang Y, Jiang D, Zhou P, Qi Y, He W, Zhao C, Yi R, Wang X, Wang B, Xu Y,
498 Yang Y, Kombe AJK, Ding C, Xie J, Gao Y, Cheng L, Li Y, Ma X, Jin T. 2020. COVID-19 diagnosis and
499 study of serum SARS-CoV-2 specific IgA, IgM and IgG by chemiluminescence immunoanalysis.
500 medRxiv 2020.04.17.20064907.
- 501 35. Okba NMA, Müller MA, Li W, Wang C, GeurtsvanKessel CH, Corman VM, Lamers MM, Sikkema RS, de
502 Bruin E, Chandler FD, Yazdanpanah Y, Le Hingrat Q, Descamps D, Houhou-Fidouh N, Reusken CBEM,
503 Bosch B-J, Drosten C, Koopmans MPG, Haagmans BL. 2020. Severe Acute Respiratory Syndrome

- 504 Coronavirus 2–Specific Antibody Responses in Coronavirus Disease 2019 Patients. *Emerg Infect Dis*
505 26.
- 506 36. To KK-W, Tsang OT-Y, Leung W-S, Tam AR, Wu T-C, Lung DC, Yip CC-Y, Cai J-P, Chan JM-C, Chik TS-H,
507 Lau DP-L, Choi CY-C, Chen L-L, Chan W-M, Chan K-H, Ip JD, Ng AC-K, Poon RW-S, Luo C-T, Cheng VC-C,
508 Chan JF-W, Hung IF-N, Chen Z, Chen H, Yuen K-Y. 2020. Temporal profiles of viral load in posterior
509 oropharyngeal saliva samples and serum antibody responses during infection by SARS-CoV-2: an
510 observational cohort study. *Lancet Infect Dis* 20:565–574.
- 511 37. Liu W, Liu L, Kou G, Zheng Y, Ding Y, Ni W, Wang Q, Tan L, Wu W, Tang S, Xiong Z, Zheng S. 2020.
512 Evaluation of Nucleocapsid and Spike Protein-Based Enzyme-Linked Immunosorbent Assays for
513 Detecting Antibodies against SARS-CoV-2. *Journal of Clinical Microbiology* 58.
- 514 38. Lassaunière R, Frische A, Harboe ZB, Nielsen AC, Fomsgaard A, Krogfelt KA, Jørgensen CS. 2020.
515 Evaluation of nine commercial SARS-CoV-2 immunoassays. *medRxiv* 2020.04.09.20056325.
- 516 39. Chen Y, Guo Y, Pan Y, Zhao ZJ. 2020. Structure analysis of the receptor binding of 2019-nCoV.
517 *Biochemical and Biophysical Research Communications* 525:135–140.
- 518 40. Jaimes JA, André NM, Chappie JS, Millet JK, Whittaker GR. 2020. Phylogenetic Analysis and Structural
519 Modeling of SARS-CoV-2 Spike Protein Reveals an Evolutionary Distinct and Proteolytically Sensitive
520 Activation Loop. *J Mol Biol* 432:3309–3325.
- 521 41. Ju B, Zhang Q, Ge J, Wang R, Sun J, Ge X, Yu J, Shan S, Zhou B, Song S, Tang X, Yu J, Lan J, Yuan J,
522 Wang H, Zhao J, Zhang S, Wang Y, Shi X, Liu L, Zhao J, Wang X, Zhang Z, Zhang L. 2020. Human
523 neutralizing antibodies elicited by SARS-CoV-2 infection. *Nature* [https://doi.org/10.1038/s41586-](https://doi.org/10.1038/s41586-020-2380-z)
524 020-2380-z.

- 525 42. Premkumar L, Segovia-Chumbez B, Jadi R, Martinez DR, Raut R, Markmann A, Cornaby C, Bartelt L,
526 Weiss S, Park Y, Edwards CE, Weimer E, Scherer EM, Rouphael N, Edupuganti S, Weiskopf D, Tse LV,
527 Hou YJ, Margolis D, Sette A, Collins MH, Schmitz J, Baric RS, de Silva AM. 2020. The receptor binding
528 domain of the viral spike protein is an immunodominant and highly specific target of antibodies in
529 SARS-CoV-2 patients. *Sci Immunol* 5:eabc8413.
- 530 43. Shi R, Shan C, Duan X, Chen Z, Liu P, Song J, Song T, Bi X, Han C, Wu L, Gao G, Hu X, Zhang Y, Tong Z,
531 Huang W, Liu WJ, Wu G, Zhang B, Wang L, Qi J, Feng H, Wang F, Wang Q, Gao GF, Yuan Z, Yan J.
532 2020. A human neutralizing antibody targets the receptor binding site of SARS-CoV-2. *Nature*
533 <https://doi.org/10.1038/s41586-020-2381-y>.
- 534 44. Chia WN, Tan CW, Foo R, Kang AEZ, Peng Y, Sivalingam V, Tiu C, Ong XM, Zhu F, Young BE, Chen MI-
535 C, Tan Y-J, Lye DC, Anderson DE, Wang L-F. 2020. Serological differentiation between COVID-19 and
536 SARS infections. *Emerging Microbes & Infections* 9:1497–1505.
- 537 45. Grandjean L, Saso A, Ortiz A, Lam T, Hatcher J, Thistlethwaite R, Harris M, Best T, Johnson M,
538 Wagstaffe H, Ralph E, Mai A, Colijn C, Breuer J, Buckland M, Gilmour K, Goldblatt D, Team TC-SS.
539 2020. Humoral Response Dynamics Following Infection with SARS-CoV-2. *medRxiv*
540 2020.07.16.20155663.
- 541 46. Crawford KH, Dingens AS, Eguia R, Wolf CR, Wilcox N, Logue JK, Shuey K, Casto AM, Fiala B, Wrenn S,
542 Pettie D, King NP, Chu HY, Bloom JD. 2020. Dynamics of neutralizing antibody titers in the months
543 after SARS-CoV-2 infection. *medRxiv* 2020.08.06.20169367.
- 544 47. McAndrews KM, Dowlatshahi DP, Dai J, Becker LM, Hensel J, Snowden LM, Leveille JM, Brunner MR,
545 Holden K, Hopkins NS, Harris A, Kumpati JJ, Whitt MA, Lee JJ, Ostrosky-Zeichner L, Papanna R, LeBleu
546 V, Allison J, Kalluri R. 2020. Heterogeneous antibodies against SARS-CoV-2 spike receptor binding

- 547 domain and nucleocapsid with implications on COVID-19 immunity. JCI Insight
548 <https://doi.org/10.1172/jci.insight.142386>.
- 549 48. Wan J, Xing S, Ding L, Wang Y, Gu C, Wu Y, Rong B, Li C, Wang S, Chen K, He C, Zhu D, Yuan S, Qiu C,
550 Zhao C, Nie L, Gao Z, Jiao J, Zhang X, Wang X, Ying T, Wang H, Xie Y, Lu Y, Xu J, Lan F. 2020. Human-
551 IgG-Neutralizing Monoclonal Antibodies Block the SARS-CoV-2 Infection. *Cell Reports* 32:107918.
- 552 49. He Y, Zhu Q, Liu S, Zhou Y, Yang B, Li J, Jiang S. 2005. Identification of a critical neutralization
553 determinant of severe acute respiratory syndrome (SARS)-associated coronavirus: importance for
554 designing SARS vaccines. *Virology* 334:74–82.
- 555 50. Pak JE, Sharon C, Satkunarajah M, Auperin TC, Cameron CM, Kelvin DJ, Seetharaman J, Cochrane A,
556 Plummer FA, Berry JD, Rini JM. 2009. Structural Insights into Immune Recognition of the Severe
557 Acute Respiratory Syndrome Coronavirus S Protein Receptor Binding Domain. *Journal of Molecular*
558 *Biology* 388:815–823.
- 559 51. Cao Z, Liu L, Du L, Zhang C, Jiang S, Li T, He Y. 2010. Potent and persistent antibody responses against
560 the receptor-binding domain of SARS-CoV spike protein in recovered patients. *Virology* 7:299.
- 561 52. Li L, Tong X, Chen H, He R, Lv Q, Yang R, Zhao L, Wang J, Xu H, Liu C, Chen G, Chen S, Li C, Qiao J, Yang
562 J, Wu Y, Liu Z. 2020. Characteristics and serological patterns of COVID-19 convalescent plasma
563 donors: optimal donors and timing of donation. *Transfusion* <https://doi.org/10.1111/trf.15918>.
- 564 53. Salazar E, Kuchipudi SV, Christensen PA, Eagar TN, Yi X, Zhao P, Jin Z, Long SW, Olsen RJ, Chen J,
565 Castillo B, Leveque C, Towers DM, Lavinder J, Gollihar JD, Cardona J, Ippolito GC, Nissly RH, Bird IM,
566 Greenawalt D, Rossi RM, Gontu A, Srinivasan S, Poojary IB, Cattadori IM, Hudson PJ, Joselyn N,
567 Prugar L, Huie K, Herbert A, Bernard DW, Dye J, Kapur V, Musser JM. 2020. Relationship between

- 568 Anti-Spike Protein Antibody Titers and SARS-CoV-2 In Vitro Virus Neutralization in Convalescent
569 Plasma. bioRxiv <https://doi.org/10.1101/2020.06.08.138990>.
- 570 54. Yao X-Y, Liu W, Li Z-Y, Xiong H-L, Su Y-Y, Li T, Zhang S-Y, Zhang X-J, Bi Z-F, Deng C-X, Li C-Y, Yuan Q,
571 Zhang J, Zhang T-Y, Wang Z-X, Ge S, Ningshao X. 2020. Neutralizing and binding antibody kinetics of
572 COVID-19 patients during hospital and convalescent phases. medRxiv 2020.07.18.20156810.
- 573 55. Pepper M, Rodda L, Netland J, Shehata L, Pruner K, Morawski P, Thouvenel C, Takahara K,
574 Eggenberger J, Hemann E, Waterman H, Fahning M, Chen Y, Rathe J, Stokes C, Wrenn S, Fiala B,
575 Carter L, Hamerman J, King N, Gale M, Campbell D, Rawlings D. 2020. Functional SARS-CoV-2-specific
576 immune memory persists after mild COVID-19. Res Sq <https://doi.org/10.21203/rs.3.rs-57112/v1>.
- 577 56. Dagotto G, Yu J, Barouch DH. 2020. Approaches and Challenges in SARS-CoV-2 Vaccine Development.
578 Cell Host Microbe <https://doi.org/10.1016/j.chom.2020.08.002>.
- 579 57. Amanat F, Krammer F. 2020. SARS-CoV-2 Vaccines: Status Report. Immunity 52:583–589.
- 580 58. Bryan A, Pepper G, Wener MH, Fink SL, Morishima C, Chaudhary A, Jerome KR, Mathias PC,
581 Greninger AL. 2020. Performance Characteristics of the Abbott Architect SARS-CoV-2 IgG Assay and
582 Seroprevalence in Boise, Idaho. J Clin Microbiol <https://doi.org/10.1128/JCM.00941-20>.
- 583 59. Tang MS, Hock KG, Logsdon NM, Hayes JE, Gronowski AM, Anderson NW, Farnsworth CW. 2020.
584 Clinical Performance of Two SARS-CoV-2 Serologic Assays. Clinical Chemistry hvaa120.
- 585 60. Tuaille E, Bolloré K, Pisoni A, Debieesse S, Renault C, Marie S, Groc S, Niels C, Pansu N, Dupuy AM,
586 Morquin D, Foulongne V, Bourdin A, Le Moing V, Van de Perre P. 2020. Detection of SARS-CoV-2
587 antibodies using commercial assays and seroconversion patterns in hospitalized patients. J Infect
588 81:e39–e45.

- 589 61. Perkmann T, Perkmann-Nagele N, Breyer M-K, Breyer-Kohansal R, Burghuber OC, Hartl S, Aletaha D,
590 Sieghart D, Quehenberger P, Marculescu R, Mucher P, Strassl R, Wagner OF, Binder CJ, Haslacher H.
591 2020. Side by side comparison of three fully automated SARS-CoV-2 antibody assays with a focus on
592 specificity. Clin Chem <https://doi.org/10.1093/clinchem/hvaa198>.
- 593 62. Kohmer N, Westhaus S, Rühl C, Ciesek S, Rabenau HF. 2020. Brief clinical evaluation of six high-
594 throughput SARS-CoV-2 IgG antibody assays. J Clin Virol 129:104480.
- 595 63. Caini S, Bellerba F, Corso F, Díaz-Basabe A, Natoli G, Paget J, Facciotti F, De Angelis SP, Raimondi S,
596 Palli D, Mazzarella L, Pelicci PG, Vineis P, Gandini S. 2020. Meta-analysis of diagnostic performance
597 of serological tests for SARS-CoV-2 antibodies up to 25 April 2020 and public health implications.
598 Eurosurveillance 25.
- 599 64. Chew KL, Tan SS, Saw S, Pajarillaga A, Zaine S, Khoo C, Wang W, Tambyah P, Jureen R, Sethi SK. 2020.
600 Clinical evaluation of serological IgG antibody response on the Abbott Architect for established
601 SARS-CoV-2 infection. Clinical Microbiology and Infection 26:1256.e9-1256.e11.
- 602 65. Herroelen PH, Martens GA, De Smet D, Swaerts K, Decavele A-S. 2020. Humoral Immune Response
603 to SARS-CoV-2: Comparative Clinical Performance of Seven Commercial Serology Tests. American
604 Journal of Clinical Pathology aqaa140.
- 605 66. Pflüger LS, Bannasch JH, Brehm TT, Pfefferle S, Hoffmann A, Nörz D, van der Meirschen M, Kluge S,
606 Haddad M, Pischke S, Hiller J, Addo MM, Lohse AW, Wiesch JS zur, Peine S, Aepfelbacher M,
607 Lütgehetmann M. 2020. Clinical evaluation of five different automated SARS-CoV-2 serology assays
608 in a cohort of hospitalized COVID-19 patients. Journal of Clinical Virology 130:104549.
- 609 67. Xiao AT, Gao C, Zhang S. 2020. Profile of specific antibodies to SARS-CoV-2: The first report. J Infect
610 <https://doi.org/10.1016/j.jinf.2020.03.012>.

- 611 68. Zhou Q, Zhu D, Yan H, Quan J, Kuang Z, Zhang W, Huang L, Lei T, Liu J, Xiao B, Luo A, Sun Z, Li L. 2020.
612 A preliminary study on analytical performance of serological assay for SARS-CoV-2 IgM/IgG and
613 application in clinical practice. medRxiv 2020.05.05.20092551.
- 614 69. Padoan A, Cosma C, Sciacovelli L, Faggian D, Plebani M. 2020. Analytical performances of a
615 chemiluminescence immunoassay for SARS-CoV-2 IgM/IgG and antibody kinetics. Clinical Chemistry
616 and Laboratory Medicine (CCLM) 1.
- 617 70. Suhandynata RT, Hoffman MA, Kelner MJ, McLawhon RW, Reed SL, Fitzgerald RL. 2020. Longitudinal
618 Monitoring of SARS-CoV-2 IgM and IgG Seropositivity to Detect COVID-19. The Journal of Applied
619 Laboratory Medicine jfaa079.
- 620 71. Sun B, Feng Y, Mo X, Zheng P, Wang Q, Li P, Peng P, Liu X, Chen Z, Huang H, Zhang F, Luo W, Niu X,
621 Hu P, Wang L, Peng H, Huang Z, Feng L, Li F, Zhang F, Li F, Zhong N, Chen L. 2020. Kinetics of SARS-
622 CoV-2 specific IgM and IgG responses in COVID-19 patients. Emerg Microbes Infect 9:940–948.
- 623 72. Long Q-X, Liu B-Z, Deng H-J, Wu G-C, Deng K, Chen Y-K, Liao P, Qiu J-F, Lin Y, Cai X-F, Wang D-Q, Hu Y,
624 Ren J-H, Tang N, Xu Y-Y, Yu L-H, Mo Z, Gong F, Zhang X-L, Tian W-G, Hu L, Zhang X-X, Xiang J-L, Du H-
625 X, Liu H-W, Lang C-H, Luo X-H, Wu S-B, Cui X-P, Zhou Z, Zhu M-M, Wang J, Xue C-J, Li X-F, Wang L, Li
626 Z-J, Wang K, Niu C-C, Yang Q-J, Tang X-J, Zhang Y, Liu X-M, Li J-J, Zhang D-C, Zhang F, Liu P, Yuan J, Li
627 Q, Hu J-L, Chen J, Huang A-L. 2020. Antibody responses to SARS-CoV-2 in patients with COVID-19.
628 Nat Med 26:845–848.
- 629 73. Yongchen Z, Shen H, Wang X, Shi X, Li Y, Yan J, Chen Y, Gu B. 2020. Different longitudinal patterns of
630 nucleic acid and serology testing results based on disease severity of COVID-19 patients. Emerging
631 Microbes & Infections 9:833–836.

632 74. Wang X, Guo X, Xin Q, Pan Y, Hu Y, Li J, Chu Y, Feng Y, Wang Q. 2020. Neutralizing Antibodies
633 Responses to SARS-CoV-2 in COVID-19 Inpatients and Convalescent Patients. Clin Infect Dis
634 <https://doi.org/10.1093/cid/ciaa721>.

635 75. Hansen CB, Jarlhelt I, Pérez-Alós L, Hummelshøj Landsy L, Loftager M, Rosbjerg A, Helgstrand C,
636 Bjelke JR, Egebjerg T, Jardine JG, Sværke Jørgensen C, Iversen K, Bayarri-Olmos R, Garred P, Skjoedt
637 M-O. 2020. SARS-CoV-2 antibody responses determine disease severity in COVID-19 infected
638 individuals. medRxiv 2020.07.27.20162321.

639

640

641 **TABLES**

642

643 **Table 1. Precision of the VIDAS[®] SARS-CoV-2 IgM and IgG assays**

VIDAS [®] SARS-CoV-2 assay	Sample	Total number of measurements	Mean index	Repeatability (within-run precision)		Within-laboratory precision	
				SD	CV (%)	SD	CV (%)
IgM	A (negative, high)	60	0.95	0.08	8.5	0.09	9.4
	B (positive)	60	1.50	0.14	9.3	0.16	10.7
	C (positive)	60	5.78	0.42	7.3	0.46	8.0
IgG	D (negative, high)	60	0.88	0.03	3.8	0.04	4.5
	E (positive)	60	1.42	0.08	5.5	0.09	6.5
	F (positive)	60	8.04	0.48	5.9	0.55	6.9

644 Abbreviations: SD, standard deviation; CV, coefficient of variation

645

646 **Table 2. Cross-reactivity of human sera from patients with other infections or medical**
 647 **conditions potentially interfering with the VIDAS® SARS-CoV-2 IgM and IgG assays**

Sample category	VIDAS® SARS-CoV-2 IgM		VIDAS® SARS-CoV-2 IgG	
	No. samples tested	No. positive tests	No. samples tested	No. positive tests
Pregnant women	5	0	5	0
Antinuclear antibody (ANA) ^a	47	2	47	0
Rheumatoid factor	19	4	19	0
Human anti-mouse antibody (HAMA)	5	0	5	0
<i>Borrelia burgdorferi</i>	10	0	6	0
<i>Haemophilus Influenzae B</i>	5	0	5	0
<i>Plasmodium falciparum</i>	3	1	3	0
<i>Toxoplasma gondii</i>	10	0	6	0
<i>Treponema pallidum</i>	3	0	3	0
<i>Trypanosoma cruzi</i>	5	1	5	0
Hepatitis A virus (HAV)	3	0	3	0
Hepatitis B virus (HBV)	5	0	5	0
Hepatitis C virus (HCV)	5	0	5	0
Hepatitis E virus (HEV)	7	0	6	0
Herpes simplex virus (HSV)	6	0	6	0
Human immunodeficiency virus (HIV)	5	0	5	1
Cytomegalovirus (CMV)	4	0	3	0
Measles virus (MV)	4	0	3	0
Mumps virus (MuV)	1	0	3	0
Rubella virus (RuV)	10	0	6	0
Dengue virus (DENV)	3	0	3	0
West Nile virus (WNV)	4	0	3	0
Yellow fever virus (YFV)	4	0	3	0
Zika virus (ZIKV)	5	0	5	0
Adenovirus (AdV)	2	0	2	0
Metapneumovirus (MPV)	4	0	4	0
Rhinovirus/Enterovirus (RV/Enterov) ^b	20	1	20	0
Influenza A and B virus (IAV/IBV)	30	0	30	0
Parainfluenza viruses 1/2/3 (PIV-1/2/3)	11	0	11	0
Respiratory syncytial virus A or B (RSV A or B)	13	0	13	1
Coronavirus NL63/HKU1 (CoV-NL63/HKU1) ^c	9	1	9	0
Coronavirus 229E (CoV-229E)	7	0	7	0
Coronavirus OC43 (CoV-OC43)	2	0	2	0
Total	276	10	261	2

648 ^aInclude anti-DNA, anti-SSA, anti-SSB and anti-Sm/RNP antibodies; ^bOne out of 20 sera was from a patient with a bocavirus (BoV) co-
 649 infection and was negative in both VIDAS® SARS-CoV-2 IgM and IgG assays; ^cSix out of the nine sera tested were from patients positive
 650 for CoV-NL63 and three were from patients positive for CoV-NL63 and/or CoV-HKU1.

651

652 **Table 3. Specificity of the VIDAS[®] SARS-CoV-2 IgM and IgG assays**

VIDAS[®] SARS-CoV-2 serology testing	No. samples	No. negative results	Specificity	95% confidence interval (95% CI)
IgM	308	306	99.4%	97.7-99.9%
IgG^a	989	988	99.9%	99.4-100.0%
Combined IgM/IgG^b	308	306	99.4%	97.7-99.9%

653 ^aSpecificity (95% CI) determined based on common samples (N=308) was 100.0% (98.8-100.0%); ^bcombined test is negative when both
654 IgM and IgG tests are negative

655

656 **Table 4. Positive percent agreement (PPA) of the VIDAS[®] SARS-CoV-2 IgM, IgG and combined**
 657 **IgM/IgG test results of paired SARS-CoV-2-positive samples, according to the time from RT-**
 658 **PCR-positive result**

VIDAS [®] SARS-CoV-2 serology testing	Time from RT-PCR-positive result	Median (range) time in days	No. samples ^a	No. positive results	PPA	95% CI
IgM (N=232)	0-7 days	2 (0-7)	110	49	44.5%	35.6-53.9%
	8-15 days	14 (8-15)	60	49	81.7%	70.1-89.4%
	16-23 days	20 (16-23)	38	31	81.6%	66.6-90.8%
	24-31 days	26 (24-28)	13	13	100.0%	75.3-100.0%
	≥ 32 days	33 (32-65)	11	9	81.8%	52.3-94.9%
IgG (N=232)	0-7 days	2 (0-7)	110	50	45.5%	36.5-54.8%
	8-15 days	14 (8-15)	60	53	88.3%	77.8-94.2%
	16-23 days	20 (16-23)	38	36	94.7%	82.7-98.5%
	24-31 days	26 (24-28)	13	13	100.0%	75.3-100.0%
	≥ 32 days	33 (32-65)	11	11	100.0%	71.5-100.0%
Combined IgM/IgG^b (N=232)	0-7 days	2 (0-7)	110	59	53.6%	44.4-62.7%
	8-15 days	14 (8-15)	60	57	95.0%	86.1-99.0%
	16-23 days	20 (16-23)	38	38	100.0%	90.7-100.0%
	24-31 days	26 (24-28)	13	13	100.0%	75.3-100.0%
	≥ 32 days	33 (32-65)	11	11	100.0%	71.5-100.0%

659 ^ano more than one test result per patient per time period; ^bcombined test is positive when at least one of IgM and/or IgG tests are
 660 positive

661

662 **Table 5. Positive percent agreement (PPA) of the VIDAS[®] SARS-CoV-2 IgM, IgG and combined**
 663 **IgM/IgG test results of paired SARS-CoV-2-positive samples, according to the time from**
 664 **symptom onset**

VIDAS [®] SARS-CoV-2 serology testing	Time from symptom onset	Median (range) time in days	No. samples ^a	No. positive results	PPA	95% CI
IgM (N=105)	0-7 days	5.5 (1-7)	22	7	31.8%	16.4-52.7%
	8-15 days	12 (8-15)	29	24	82.8%	65.5-92.4%
	16-23 days	18 (16-23)	26	26	100.0%	86.8-100.0%
	24-31 days	26 (24-30)	18	18	100.0%	81.5-100.0%
	≥ 32 days	35 (32-65)	10	10	100.0%	69.2-100.0%
IgG (N=105)	0-7 days	5.5 (1-7)	22	7	31.8%	16.4-52.7%
	8-15 days	12 (8-15)	29	25	86.2%	69.4-94.5%
	16-23 days	18 (16-23)	26	25	96.2%	80.4-99.9%
	24-31 days	26 (24-30)	18	17	94.4%	74.2-99.0%
	≥ 32 days	35 (32-65)	10	10	100.0%	69.2-100.0%
Combined IgM/IgG^b (N=105)	0-7 days	5.5 (1-7)	22	8	36.4%	19.7-57.0%
	8-15 days	12 (8-15)	29	26	89.7%	73.6-96.4%
	16-23 days	18 (16-23)	26	26	100.0%	86.8-100.0%
	24-31 days	26 (24-30)	18	18	100.0%	81.5-100.0%
	≥ 32 days	35 (32-65)	10	10	100.0%	69.2-100.0%

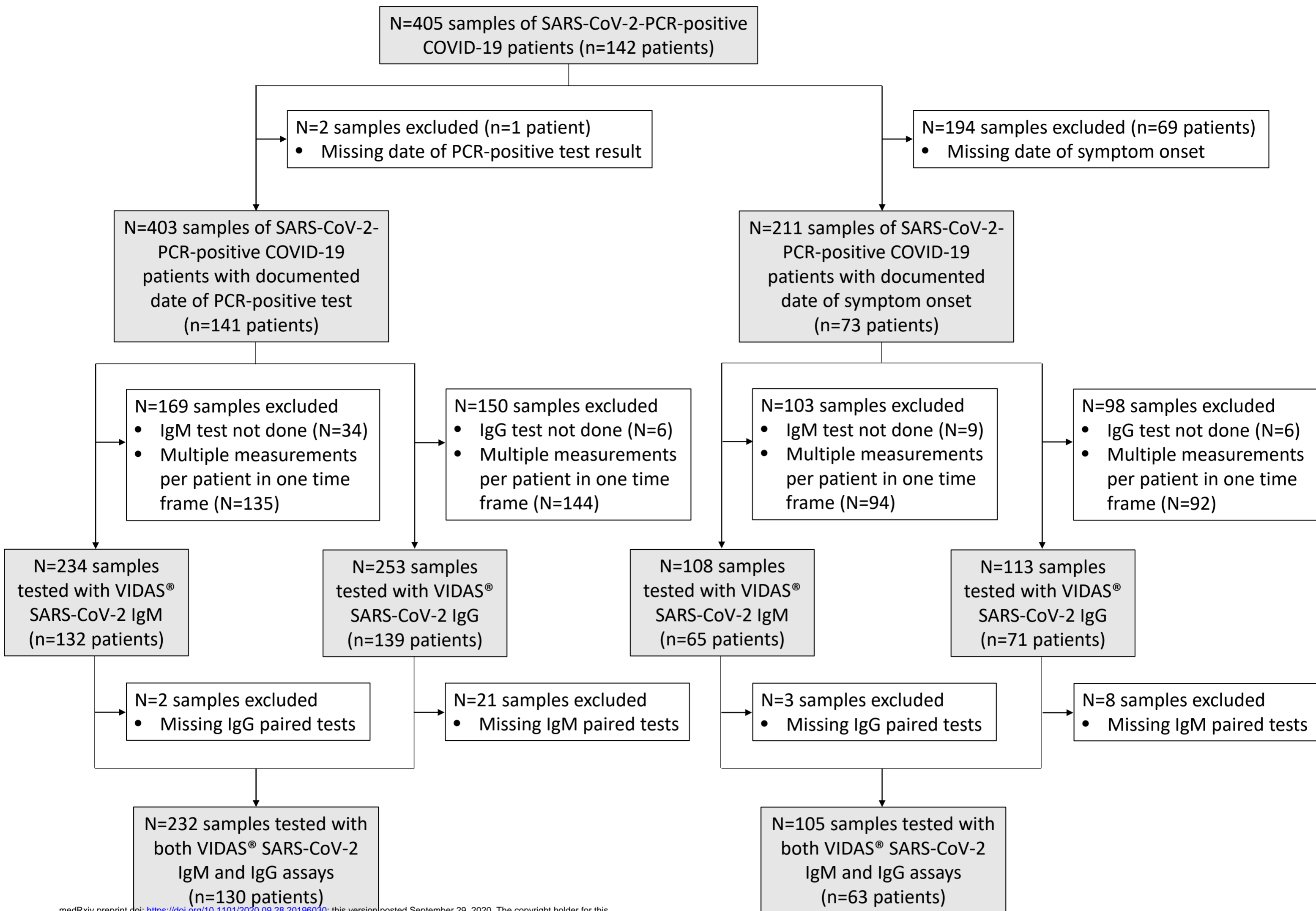
665 ^ano more than one test result per patient per time period; ^bcombined test is positive when at least one of IgM and/or IgG tests are
 666 positive

667

668 **Table 6. Positive and negative predictive values (PPV/NPV) at 5% prevalence of the VIDAS®**
 669 **SARS-CoV-2 IgM, IgG and combined IgM/IgG test results, according to the time from symptom**
 670 **onset**
 671 **2 IgM, IgG and combined IgM/IgG test results, according to the time from symptom onset**

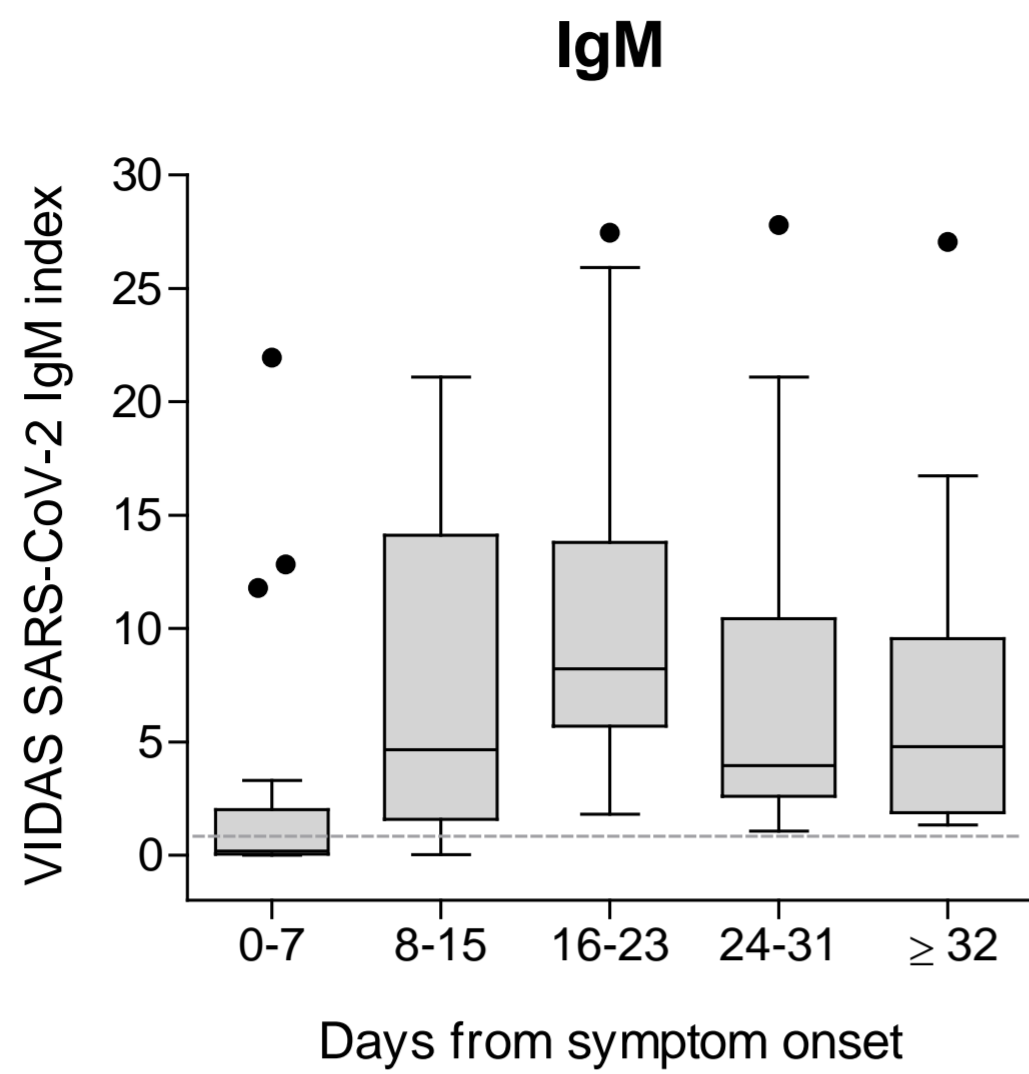
VIDAS® SARS-CoV-2 serology testing	Time from symptom onset	PPV ^a (95% CI)	NPV ^a (95% CI)
IgM	0-7 days	72.1% (36.3-92.1%)	96.5% (95.4-97.4%)
	8-15 days	87.0% (62.5-96.4%)	99.1% (98.0-99.6%)
	16-23 days	89.0% (67.1-97.0%)	100.0% (N/A) ^b
	24-31 days	89.0% (67.1-97.0%)	100.0% (N/A) ^b
	≥ 32 days	89.0% (67.1-97.0%)	100.0% (N/A) ^b
IgG	0-7 days	100.0% (N/A) ^b	96.5% (95.4-97.4%)
	8-15 days	100.0% (N/A) ^b	99.3% (98.2-99.7%)
	16-23 days	100.0% (N/A) ^b	99.8% (98.6-100.0%)
	24-31 days	100.0% (N/A) ^b	99.7% (98.1-100.0%)
	≥ 32 days	100.0% (N/A) ^b	100.0% (N/A) ^b
Combined IgM/IgG	0-7 days	74.7% (40-92.9%)	96.7% (95.6-97.6%)
	8-15 days	87.9% (64.5-96.7%)	99.5% (98.4-99.8%)
	16-23 days	89.0% (67.1-97.0%)	100.0% (N/A) ^b
	24-31 days	89.0% (67.1-97.0%)	100.0% (N/A) ^b
	≥ 32 days	89.0% (67.1-97.0%)	100.0% (N/A) ^b

672 ^aPPV and NPV were calculated at 5% prevalence and using values of specificity and sensitivity (PPA) determined on paired
 673 VIDAS® SARS-CoV-2 IgM and IgG test results (N=308 for specificity, Table 3; N=105 for PPA, Table 5); ^b95% CI not calculable
 674 (division by zero)
 675

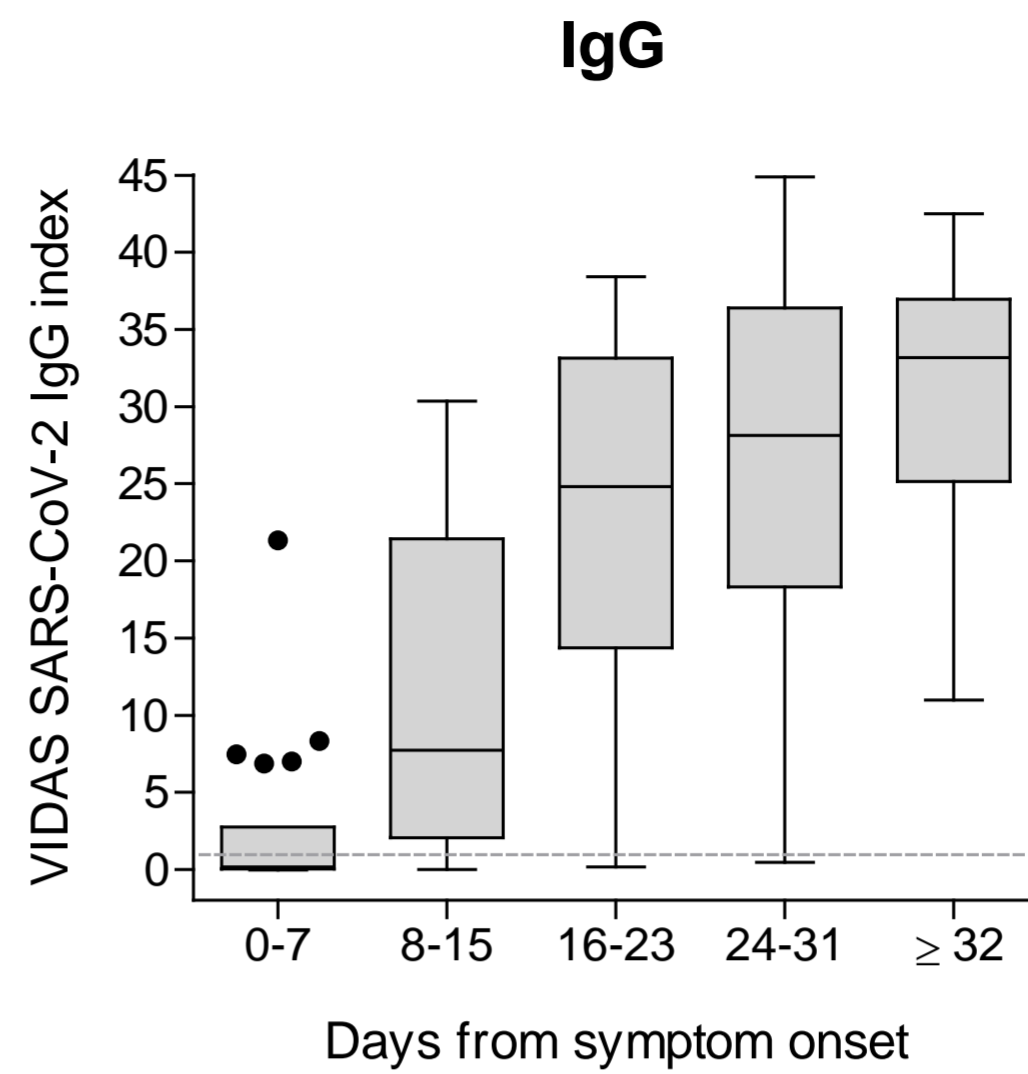


medRxiv preprint doi: <https://doi.org/10.1101/2020.09.28.20196030>; this version posted September 29, 2020. The copyright holder for this preprint (which was not certified by peer review) is the author/funder, who has granted medRxiv a license to display the preprint in perpetuity. It is made available under a [CC-BY-ND 4.0 International license](https://creativecommons.org/licenses/by-nd/4.0/).

Figure 1. Study flow diagram. Description of SARS-CoV-2-positive samples used to determine the positive percent agreement relative to the time of RT-PCR-positive test result and to the time of symptom onset. The number of and reason for sample exclusion are indicated in the white boxes. Included samples are indicated in greyed boxes. Altogether, out of the 405 collected samples (from 142 SARS-CoV-2-positive patients), 232 paired samples (i.e. tested with both VIDAS® SARS-CoV-2 IgM and IgG assays) from 130 patients with a documented date for the SARS-CoV-2-specific PCR-positive test, and 105 paired samples from 63 patients with a documented date of symptom onset were available.

A

N	22	29	26	18	10
Median (IQR)	0.2 (0.1-1.9)	4.6 (1.9-13)	8.2 (5.9-14)	4.0 (2.7-10)	4.8 (2.0-7.2)

B

N	22	29	26	18	10
Median (IQR)	0.2 (0.0-1.4)	7.7 (2.1-21)	24.8 (15-33)	28.1 (19-36)	33.2 (28-37)

Figure 2. Distribution of IgM (A) and IgG (B) index values obtained using the VIDAS® SARS-CoV-2 IgM and IgG assays, respectively, in patients confirmed positive for SARS-CoV-2, according to the time from symptom onset. VIDAS® SARS-CoV-2 IgM and IgG index values of 105 paired samples from 63 SARS-CoV-2-positive patients (Table 5, Table S1 and Fig. 1) are displayed as Tukey box plots according to the time from symptom onset. No more than one patient's sample is included per time frame. The number of tested samples (N), and the median and interquartile range (IQR) of index values are indicated below each graph. The dashed line shows the positivity cut-off of both assays ($i = 1.00$).

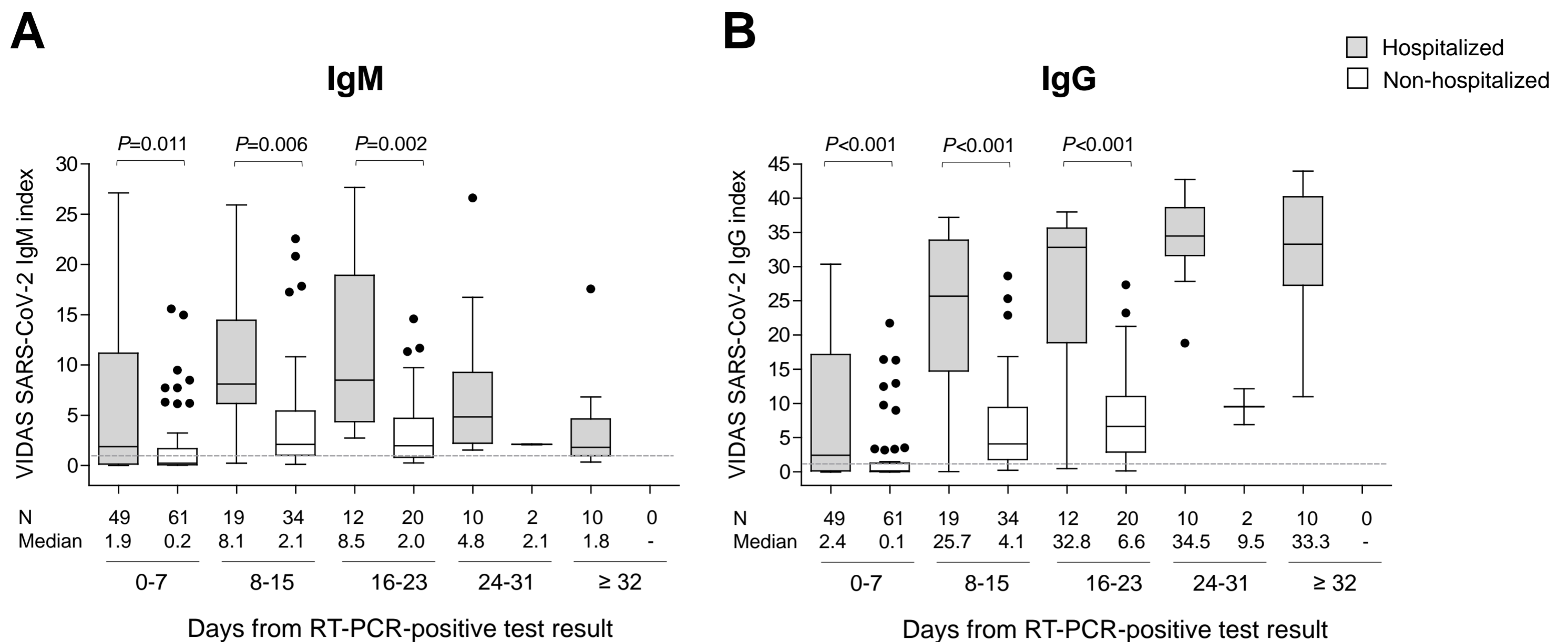
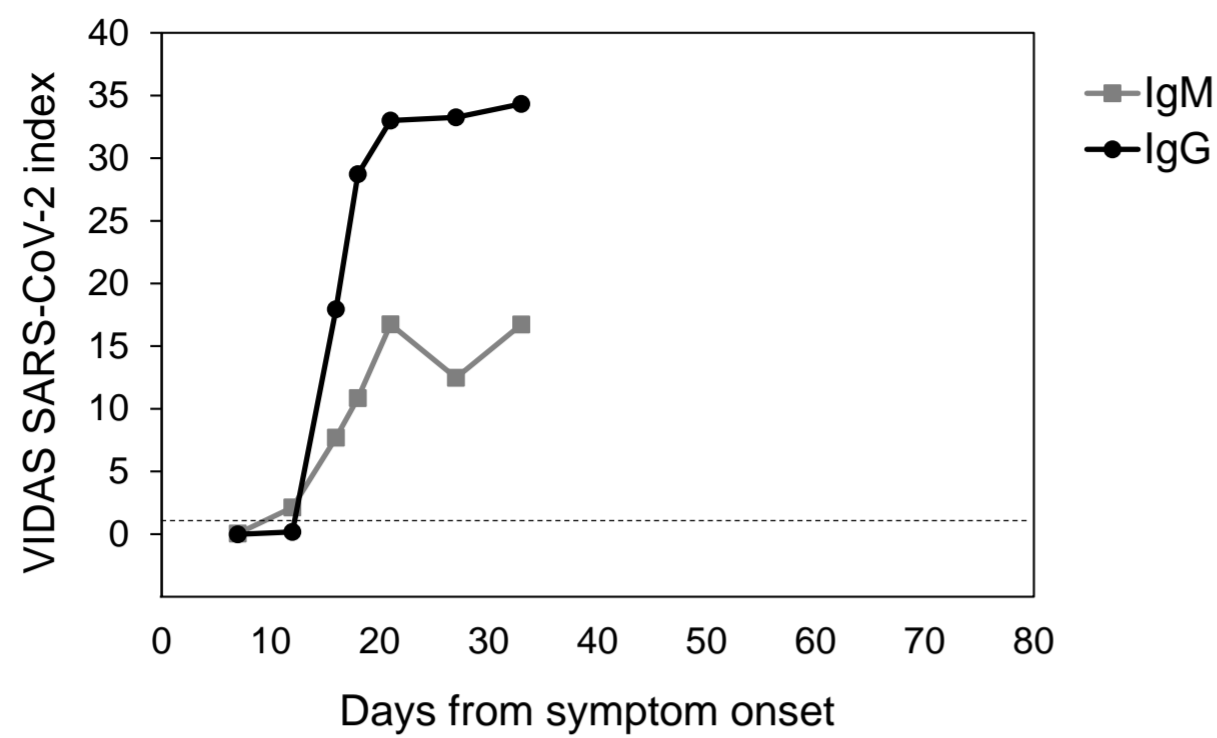
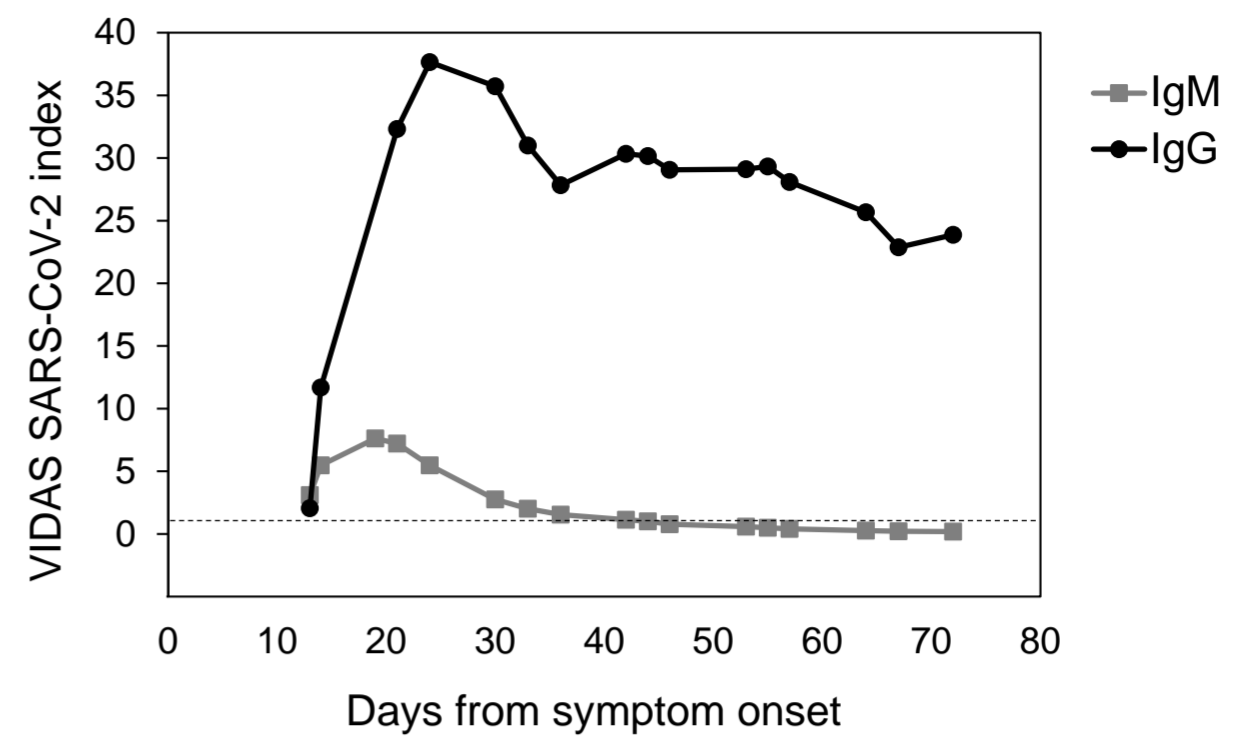
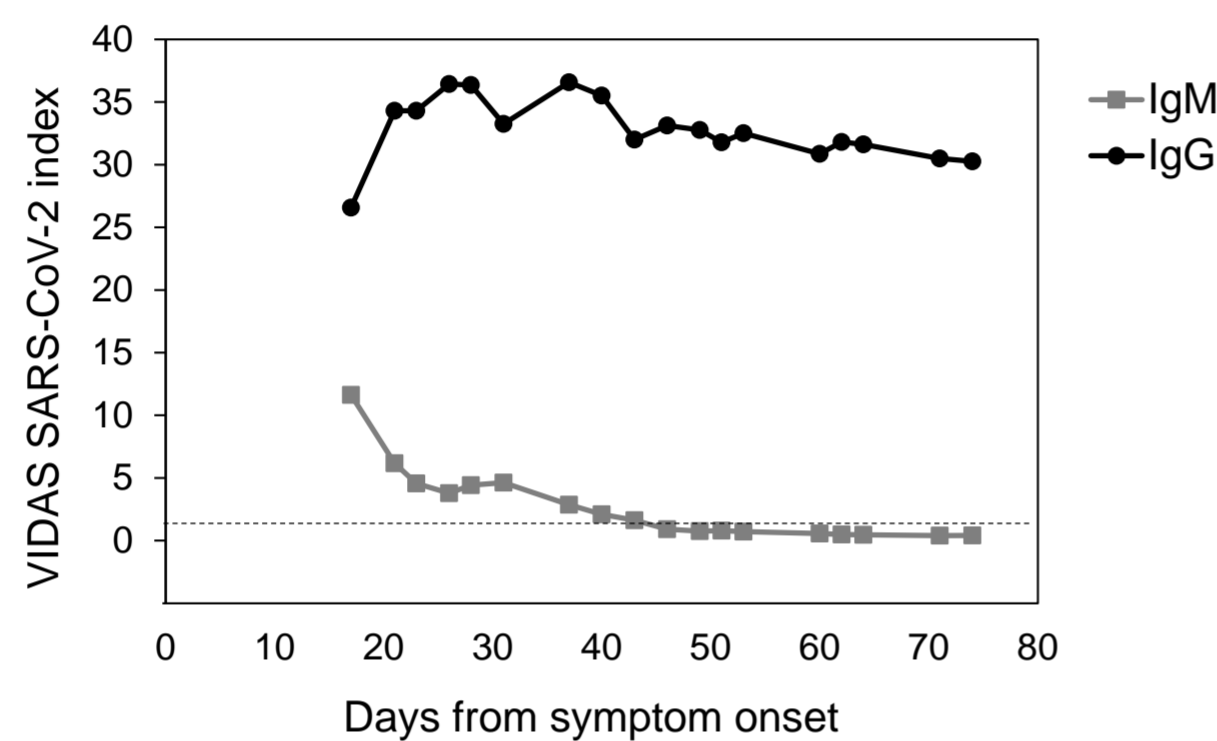
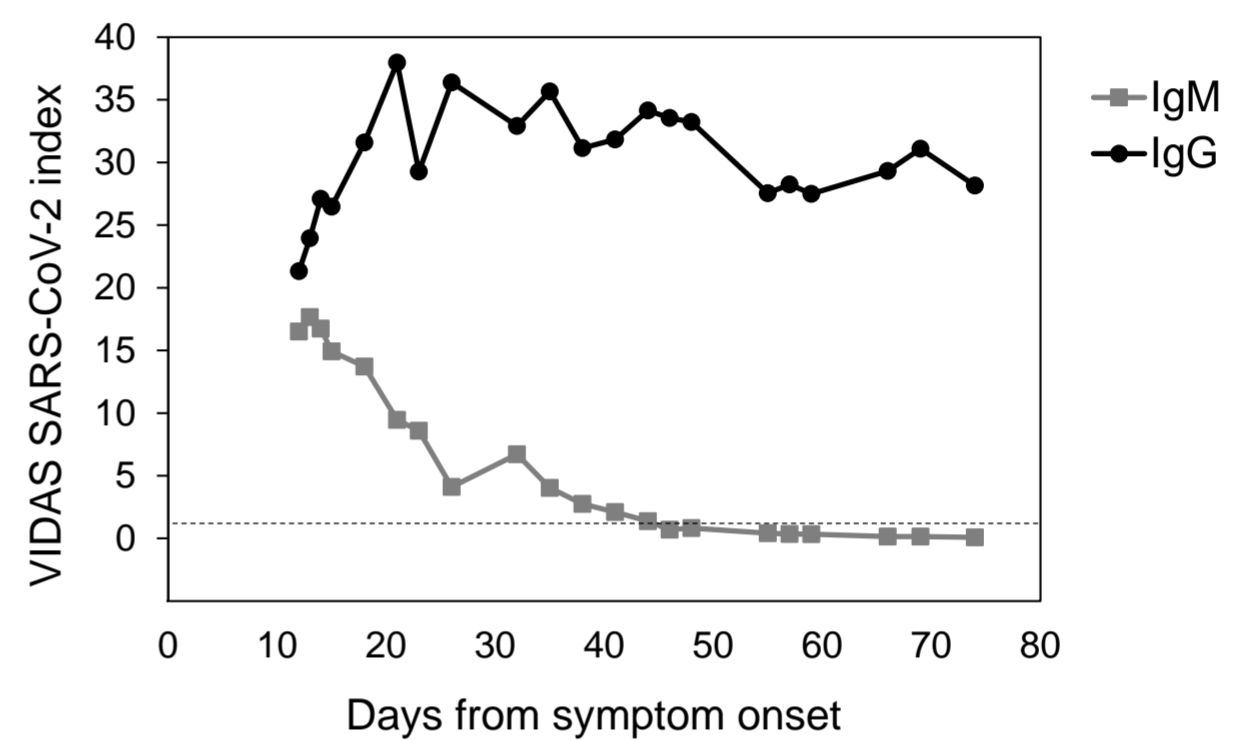


Figure 3. Distribution of IgM (A) and IgG (B) index values obtained using the VIDAS[®] SARS-CoV-2 IgM and IgG assays, respectively, in hospitalized vs. non-hospitalized patients confirmed positive for SARS-CoV-2, according to the time from PCR-positive result. Out of the 232 paired samples (Tables 4 and S2), 15 samples from patients with an unknown hospitalization status were excluded from the analysis. VIDAS[®] SARS-CoV-2 IgM and IgG index values of 217 paired samples from 115 SARS-CoV-2-positive patients (100 samples from 54 hospitalized patients and 117 samples from 61 non-hospitalized patients) are depicted as Tukey box plots according to the time from RT-PCR-positive test result. No more than one patient's sample is included per time frame. The number of tested samples (N) and the median index are indicated below each graph. The dashed line shows the positivity cut-off of both assays ($i = 1.00$). Differences between the groups of hospitalized and non-hospitalized patients were tested at each time frame (0-7, 8-15, 16-23 days post positive PCR) using a two-sided MWU-test; the respective p-values are displayed above each graph. No statistical testing was performed at 24-31 and ≥ 32 days due to the too low of lack of index values in the group of non-hospitalized patients at these time points.

A**B****C****D**

medRxiv preprint doi: <https://doi.org/10.1101/2020.09.28.20196030>; this version posted September 29, 2020. The copyright holder for this preprint (which was not certified by peer review) is the author/funder, who has granted medRxiv a license to display the preprint in perpetuity.

It is made available under a [CC-BY-ND 4.0 International license](https://creativecommons.org/licenses/by-nd/4.0/).

Figure 4. Kinetics of IgM and IgG seroconversion in four selected hospitalized patients. VIDAS[®] SARS-CoV-2 IgM and IgG index values of four patients (A to D, respectively) measured over time after symptom onset are presented. The dashed line indicates the positivity cut-off of both assays ($i = 1.00$). Further patients' information is as follows: **(A)** the 78-year-old male patient was in the intensive-care unit (ICU) at all investigated time points, except at the first (day 7) and last (day 33) measurement time points; **(B)** the 77-year-old male patient was in ICU at all investigated time points; **(C)** the 43-year-old male patient was ICU at all investigated times, except at the last two measurement time points (day 71 and 74); **(D)** the 67-year-old male patient was in ICU at all investigated time points.