

1 **Estimating the Impact of Self-Management Education, Influenza**  
2 **Vaccines, Nebulizers, and Spacers on Healthcare Utilization and**  
3 **Expenditures for Medicaid-Enrolled Children with Asthma**

4 Melike Yildirim, MS<sup>1</sup>, Paul Griffin, PhD<sup>2</sup>, Pinar Keskinocak, PhD<sup>1</sup>, Jean  
5 O'Connor, JD, MPH, DrPH<sup>3</sup>, Julie L Swann<sup>4\*</sup>

6 <sup>1</sup> School of Industrial Engineering, Georgia Institute of Technology, Atlanta, GA,  
7 USA

8 <sup>2</sup> Regenstrief Center for Healthcare Engineering, Purdue University, West  
9 Lafayette, IN, USA

10 <sup>3</sup> Rollins School of Public Health, Emory University, Atlanta, Georgia, USA

11 <sup>4</sup> Department of Industrial and Systems Engineering, North Carolina State  
12 University, Raleigh, North Carolina, USA

13 \* Corresponding author E-mail: [jlswann@ncsu.edu](mailto:jlswann@ncsu.edu) (JLS)

14 Introduction: We quantify the effect of a set of interventions including asthma  
15 self-management education, influenza vaccination, spacers, and nebulizers on  
16 healthcare utilization and expenditures for Medicaid-enrolled children with  
17 asthma in New York and Michigan.

18 Methods: We obtained patients' data from Medicaid Analytic eXtract files and  
19 evaluated patients with persistent asthma in 2010 and 2011. We used difference-  
20 in-difference regression to quantify the effect of the intervention on the  
21 probability of asthma-related healthcare utilization, asthma medication, and  
22 utilization costs. We estimated the average change in outcome measures from  
23 pre-intervention/intervention (2010) to post-intervention (2011) periods for the  
24 intervention group by comparing this with the average change in the control  
25 group over the same time horizon.

26 Results: All of the interventions reduced both utilization and asthma medication  
27 costs. Asthma self-management education, nebulizer, and spacer interventions

28 NOTE: This preprint reports the probability of emergency department (20.8-15.9%, 95% CI 19.7-

29 21.9% vs. 0.5-2.5% respectively) and inpatient (3.5-0.8%, 95% CI 2.1-4.9% vs.  
30 0.4-1.2%, respectively) utilizations. Influenza vaccine decreased the probability  
31 of primary care physician (6-3.5%, 95% CI 4.4-7.6% vs. 1.5-5.5%, respectively)  
32 visit. The reductions varied by state and intervention.

33 Conclusions: Promoting asthma self-management education, influenza  
34 vaccinations, nebulizers, and spacers can decrease the frequency of healthcare  
35 utilization and asthma-related expenditures while improving medication  
36 adherence.

37

38

39

40

41

42

43

44

45

46

47

48

49

## 50 **Introduction**

51 Asthma is a chronic inflammatory disease of the airways that causes wheezing,  
52 breathlessness, and chest tightness (1). Asthma is one of the most common chronic  
53 illnesses, affecting 8.3% of US children in 2016 (2). The estimated annual cost of asthma  
54 treatment in the US was \$81.9 billion in 2013, with an average of \$3,728 per person (3).  
55 Additionally, asthma is the third leading cause of pediatric hospitalization (4), and  
56 children missed 13.8 million school days in 2013 due to asthma complications (5).  
57 Asthma severity may change over time. However, with routine follow up visits to the  
58 primary physician as well as careful adherence to medications and avoidance of asthma  
59 triggers, patients can prevent and control asthma symptoms (6). If the patient has  
60 uncontrolled asthma and the symptoms are present, it is crucial to optimize care (e.g.,  
61 asthma self-management education (AS-ME)).

62 Improvements to asthma treatment and education can reduce the frequency of  
63 related emergency department (ED) visits, missed school days, and hospitalizations. The  
64 Center for Disease and Control (CDC) prioritized several National Asthma Education and  
65 Prevention Program (NAEPP) recommendations in 6|18 initiative, which includes access  
66 and adherence to the appropriate asthma medications and devices and promotes AS-ME  
67 for individuals whose asthma is not well controlled (7).

68 A nebulizer is a device to deliver liquid medication to the lungs accurately, and  
69 spacers are recommended to use with inhalers to provide a required amount of  
70 medication, especially by children who have difficulty inhaling correctly. Proper usage  
71 of medications and required dose leads to a better response (8). Two types of medications  
72 (controllers and relievers) are commonly used for asthma treatments. Relievers work on  
73 acute symptoms and provide quick relief, whereas controller medications are used  
74 regularly to prevent asthma attacks. Improving adherence to asthma medications and

75 devices can reduce the utilization cost of visits due to fewer ED visits and hospitalizations  
76 (9). For patients whose asthma remains uncontrolled despite medical management, AS-  
77 ME helps patients manage asthma triggers and symptoms and reduce asthma exacerbation  
78 (10). Patients with asthma have an increased risk of severe symptoms with influenza. Flu  
79 vaccines can decrease the risk of asthma attacks, which is triggered by flu infection (11).  
80 Although clinical guidelines have recommended AS-ME and prescription of a spacer with  
81 an inhaler (7), they are not widely implemented, and their net benefits are uncertain.

82 The objectives of this study were to: (i). predict the effects of asthma interventions  
83 (AS-ME programs, influenza vaccination, nebulizer and spacer) on healthcare utilization  
84 cost and asthma medication expenditures; (ii). evaluate the impacts of implementing the  
85 recommended asthma interventions on the likelihood of asthma-related utilization (ED  
86 visits, inpatient (IP) visits, and primary care physician (PCP) visits). Our study has several  
87 strengths. We use the difference-in-difference method, which allows us to predict the net  
88 effect of interventions while controlling for various time-dependent factors. We also  
89 analyze several types of interventions (AS-ME, influenza vaccination, nebulizer and  
90 spacer) used by children in two Medicaid programs across several performance measures.  
91 The results provide insight for programs considering such interventions.

## 92 **Methods**

### 93 *Data and Study Population*

94 We evaluated claims data from children in New York and Michigan aged 0-17 with  
95 persistent asthma in 2010 and 2011 in the Medicaid program. Patients were Medicaid-  
96 eligible and enrolled for the entire 24 months. Based on slightly modified (12) criteria  
97 defined by Healthcare Effectiveness Data and Information Set (HEDIS), we defined  
98 persistent asthma patients as those who have at least one prescription of asthma controller

99 medication or at least one ED visit or hospitalization, or at least three outpatient visits  
100 with a primary diagnosis of asthma. We used HEDIS's definition for controller  
101 medication (including anti-asthmatic combinations, antibody inhibitors, inhaled  
102 corticosteroids, inhaled steroid combinations, leukotriene modifiers, mast cell stabilizers,  
103 and methylxanthines) (13). We classified patients with diagnoses of asthma using the  
104 ICD-9 (493.XX) codes. We identified 59,685 and 14,358 patients, respectively, in NY  
105 and MI.

106 We selected New York and Michigan from a set of ten states (Texas, New York,  
107 California, Florida, North Carolina, Alabama, Ohio, Illinois, Montano, and Michigan)  
108 with a high number of claims for AS-ME in 2010. We chose MI and NY because they  
109 also had high utilization of spacers and nebulizers, and they have different characteristics  
110 for comparison purposes.

111 We utilized all patients' data, asthma-related expenditures, utilizations, and  
112 interventions in 2010 and 2011 from Medicaid Analytic eXtract (MAX) files. We  
113 obtained the urban, suburban, and rural classification of each zip code from the 2010  
114 Census data (14).

115 We examined four interventions: AS-ME, influenza vaccine, nebulizer, or spacer  
116 interventions in 2010. We evaluated one intervention effect in each model. We defined  
117 four treatment subpopulations, i.e., one for each intervention: i) AS-ME intervention  
118 patients - had at least one claim file with the procedure of AS-ME in 2010 with a primary  
119 diagnosis code for asthma, ii) influenza intervention patients - had a prescription of  
120 influenza vaccine in 2010, iii) spacer intervention patients - had at least one prescription  
121 for a spacer (spacer with and without a mask or holding chamber) in 2010, iv) nebulizer  
122 intervention patients - had at least one prescription for a nebulizer in 2010, and v) patients  
123 who did not receive the specified intervention in either year. For example, the control

124 population of AS-ME consisted of the patients who did not receive AS-ME in 2010 and  
125 2011. Similarly, each intervention population had corresponding control groups (four  
126 control populations: AS-ME, influenza vaccine, nebulizer, and spacer controls).

127 Patients were excluded from our analysis if they received asthma-related home  
128 visits in 2010 or 2011. We dropped intervention related utilizations and costs (e.g., visits  
129 for AS-ME) from the data.

### 130 *Dependent Variables*

131 We focus on utilization associated with active management of asthma, such as in a  
132 primary care setting. We are also concerned with the most expensive visits, including  
133 those in the ED and IP setting. The focus on these three categories is consistent with  
134 several other papers (15-17). ED, IP, and PCP visits were defined as asthma visits if the  
135 primary diagnosis code was asthma. From this point on, we denote asthma-related visits  
136 as including ED, IP, and PCP visits unless otherwise stated. We define PCP visits with a  
137 place of service code as an “office” or “outpatient hospital.”

138 The dependent variables consisted of the probability of ED, PCP, and IP visit,  
139 utilization expenditures per person per year, and asthma medication expenditures per  
140 person per year. We denote utilization expenditures as the combined expenditure for ED,  
141 PCP, and IP visits.

142 We calculate medication costs from the expenditures for controllers and quick  
143 reliever medications. For all interventions except seasonal influenza, we consider the  
144 intervention and the post-intervention time intervals as the entire calendar year (2010 and  
145 2011, respectively). We assumed that the flu season occurred in the first and last quarters  
146 of the calendar year.

### 147 *Model Covariates*

148 Each model consisted of a set of independent variables that we evaluated under three  
149 categories (demographic characteristics, utilization, and medication adherence). We  
150 classified a demographic group as urban, suburban, or rural location. We used two age  
151 groups: 0 to 8 years old or 9 to 17 years old. We defined the asthma medication ratio  
152 (AMR) (18) for an individual as the ratio of controller medications to total asthma  
153 medications. We calculated the use of appropriate medications for people with asthma  
154 (ASM) (18) as “1” for children who filled at least one prescription in a calendar year for  
155 an asthma controller medication and “0” otherwise. We use medication management for  
156 people with asthma (MMA) as another measure that assesses the patients who remained  
157 with controller medications at least 50% of their treatment time (18). We used four  
158 utilization variables, the number of IP, PCP, ED visits, and non-asthma-related ED visits  
159 each year as independent variables.

160 We analyzed four separate difference-in-difference regression models for each of  
161 the dependent variables to estimate the effects of nebulizers, spacers, and AS-ME. We  
162 use dependent variables of ED utilization indicator, IP utilization indicator, utilization  
163 expenditures, and asthma medication expenditures per person per year. We estimated the  
164 effect of influenza vaccines on the PCP utilization indicator, utilization expenditures, and  
165 medication expenditure outcome variables. We used asthma medication expenditures in  
166 the analysis of NY, and because of insufficient data in MI, we excluded medication  
167 expenditures from those models.

168 We added covariates to each regression model to control for other factors that  
169 were not affected by the intervention (19). We included medication adherence,  
170 demographic characteristics, and intervention variables in all of the regression models,  
171 regardless of the dependent variable. We incorporated utilization variables in the models

172 if they were not related directly to the outcome variable. We dropped non-significant  
173 terms from the regressions through a backward stepwise method.

#### 174 ***Regression Methods***

175 We used difference-in-difference (DiD) regression to estimate the intervention's effect  
176 on the probability of asthma-related healthcare utilization and asthma medication and  
177 utilization expenditures. We provide parallel trend lines, which show the changes in  
178 outcome variables from 2010 to 2011, in Figures 1 and 2 for AS-ME (please refer to  
179 Supplementary Figures S1 and S6 for other interventions). For intervention groups, we  
180 assessed the average change in outcome measures from pre-intervention/intervention  
181 (2010) to post-intervention (2011) periods by comparing this with the average change in  
182 the control group over the same time horizon. [Figures 1 and 2 near here]

183 DiD regression required three specific dummy variables, which were related to  
184 time and population. We defined a binary intervention variable for each intervention  
185 model, which was “1” for the intervention group and “0” for the control group. The year  
186 indicator was “1” for 2011 and “0” for 2010. The interaction term represented the  
187 interaction between the intervention and the year covariates. The interaction term was  
188 defined as the DiD estimator ( $\rho$ ) and predicted with the following equation:

$$189 \quad Y_i = \alpha + \beta I_i + \gamma t_i + \rho (I_i t_i) + \delta X_i + \varepsilon_i. \quad (1)$$

190 In the equation, the subscript  $i$  represents the patient;  $I$  and  $t$ , respectively,  
191 represent intervention and time indicators;  $\alpha$  is the constant term and represents the  
192 intercept;  $\beta$  corresponds to the intervention group effect;  $\gamma$  is time trend for intervention  
193 and control groups;  $\rho$  is the estimator of the intervention effect;  $\delta$  is the effect of time-  
194 varying covariates; and  $\varepsilon$  is the error term. The DiD estimator was calculated from:



195 
$$\rho = (E[Y_i | I=1, t=1] - E[Y_i | I=1, t=0]) - (E[Y_i | I=0, t=1] - E[Y_i | I=0, t=0]). \quad (2)$$

196 The calculation was obtained by subtracting the change in outcomes for the  
197 control group from the change in outcomes for the intervention group over time (20). We  
198 used a linear probability model with the untransformed binary outcome variable, and we  
199 used an ordinary least squares regression model to estimate log-transformed (natural log)  
200 continuous response variables. In order to deal with the log transformation of zero cost  
201 values, we added a constant amount of \$1 to annual utilization and medication costs  
202 before the transformation.

203 The coefficient of the interaction term represents the effect of an intervention on  
204 the outcome variable. Linear probability models can be interpreted directly as the  
205 probability of ED, IP, or PCP utilization changes of the intervention population from pre-  
206 to post-intervention, over the control group changes. When the interaction term increases  
207 from 0 to 1 and all the other variables remained constant, the (DiD estimator  $\times$  100) shows  
208 the percentage change to the probability of having at least one visit to the specified  
209 department, which was indicated as the response variable. In the log-transformed  
210 response variable model, if the interaction term increased from 0 to 1 and all the other  
211 variables remain constant ( $e^{\text{DiD estimator}} - 1$ )  $\times$  100 (for more information, see (21)), this  
212 indicates the percentage of expenditure changes. Negative terms indicate a reduction in  
213 expenditures or probability, and a positive sign indicates the opposite. The percentage  
214 changes represent the reduction from 2010 to 2011 in the intervention population over  
215 the changes in the control population.

## 216 **Results**

217 We summarize descriptive results in Tables 1 and 2 [Tables 1 and 2 near here] for the  
218 intervention and control populations. Patients that received interventions were more likely

219 to be younger children, more likely to live in urban or suburban areas, and are likely to  
220 have received some other preventive intervention.

221 For patients who received any intervention, their 2010 utilization cost was 1.37  
222 times higher than those who received none. In comparison to the control, their probability  
223 of ED, IP, and PCP utilization was 41% higher, 122% higher, and 55% lower in 2010.

224 For each intervention and each outcome variable, we estimated the intervention  
225 effect for patients who received an intervention in 2010. For all interventions in both  
226 states, we find that the utilization cost decreased after the intervention, which is illustrated  
227 in Figures 3 and 4. These figures convert the DiD estimator to the % of change values  
228 provided from Tables S1 and S2 (see Supplementary file). We discuss results specific to  
229 each intervention below.

### 230 *AS-ME*

231 In the data, patients who were in the intervention group for AS-ME showed a significant  
232 reduction in ED utilization from 2010 to 2011. For example, the intervention group made  
233 0.82 ED visits in MI and 0.55 in NY on average in 2010, while in 2011, their average  
234 number of ED visits decreased to 0.41 in MI and 0.43 in NY. On the other hand, the AS-  
235 ME control population had similar average ED utilization per patient in both 2010 and  
236 2011.

237 Regression results show that AS-ME decreased the probability of ED utilization  
238 by 13.4% in MI and 6% in NY and IP utilization by 2.2% in MI and 3.5% in NY. Figures  
239 3 and 4 summarize the results, showing that AS-ME decreased the utilization cost by  
240 16.9% (i.e.,  $= (e^{-0.185} - 1) \times 100$ , using coefficient -0.185 from Table S2) for NY and 64.6%  
241 for MI patients. The NY data shows that AS-ME reduced asthma medication expenditures  
242 (controller plus reliever expenditures) by 15.04%. [Figures 3 and 4 near here]

243 ***Influenza Vaccine***

244 From descriptive data, patients in the intervention group had 26.4% and 23.8% (0.78  
245 control vs. 1.06 intervention and 1.47 control vs. 1.93 intervention) higher PCP utilization  
246 than the control populations, respectively, in NY and MI in 2010. Both the control and  
247 intervention populations had decreased mean PCP utilization in 2011. On the other hand,  
248 the intervention for influenza vaccine had decrease average IP utilization per patient in  
249 NY and MI by 50% (0.06 to 0.03 in NY and 0.04 to 0.02 in MI) from 2010 to 2011.

250 Regression results estimate that patients who received the influenza vaccine in  
251 2010 reduced their utilization expenditures by 16.4% in NY and 14.8% in MI. The  
252 vaccination was associated with a 6% (NY) and 3.5% (MI) lower probability of a PCP  
253 visit. Furthermore, the influenza vaccine decreased asthma medication expenditures by  
254 15.6% in NY (Figures 1 and 2).

255 ***Nebulizer***

256 Descriptive data from Tables 1 and 2 show that the mean ED utilization reduced 45% in  
257 MI (76% in NY) in the intervention population, which is 0.50 vs. 0.12 (0.60 vs. 0.33),  
258 respectively, in 2010 and 2011. The nebulizer control population had 11% (0.18 vs. 0.16  
259 in NY and 0.62 vs. 0.55 in MI) difference in mean ED utilization compared to the  
260 intervention population in both states.

261 From the regression models, the 2011 reduction of the predicted ED utilization  
262 probability was 20.8% in MI and 12.4% in NY with the nebulizer intervention. In  
263 addition, nebulizers reduced the likelihood of IP utilization by 1.6% and 0.8%,  
264 respectively, in MI and NY. [Figures 1 and 2 near here] Nebulizers decreased the  
265 utilization cost around 11% in both states and medication cost 6% in NY.

266 ***Spacer***

267 In both states, the intervention population for spacers reduced their mean ED and IP  
268 utilization from 2010 to 2011 more than the reduction of the control group.  
269 The mean ED utilization was reduced 20% (12.7%) for the intervention population (0.35  
270 vs. 0.28 in MI and 0.55 vs. 0.48 in NY) in MI (NY) versus 13.9% (0%) in the control  
271 population (0.36 vs. 0.31 in MI and 0.33 vs. 0.33 in NY). Similarly, the reduction of mean  
272 IP utilization was 43.8% (0.16 vs. 0.09) and 40% (0.05 vs. 0.03) for the intervention  
273 population, whereas, it was 16.7% (0.06 vs. 0.05) and 25% (0.04 vs. 0.03) for the control  
274 population, respectively, in NY and MI (Tables 1 and 2).

275 Having a spacer decreased medication and utilization expenditures. The reduction  
276 of ED and IP utilization probability was around 1% in MI and 2% in NY. A spacer  
277 decreased the utilization cost by 10.6% for NY and 15.7% for MI patients.

## 278 **Discussion**

279 All the interventions reduced the annual utilization and asthma medication expenditures  
280 per intervention patient. AS-ME, nebulizer, and spacer interventions reduced the  
281 probability of ED and IP utilization. Influenza vaccines decreased the likelihood of PCP  
282 utilization. In short, all of the interventions had positive impacts on more than one  
283 measure of outcomes or cost. This is true even when controlling for other interventions  
284 that a patient had, which commonly occurred and when controlling for regression to the  
285 mean through the difference-in-difference approach.

286 The percentages of expenditure reductions were consistent for the two states for  
287 influenza vaccine (15% in MI and 16% in NY) and nebulizer (11% in MI and NY)  
288 models. The spacer intervention population showed similar reductions for two states  
289 (16% in MI and 11% in NY). However, AS-ME results showed a 65% expenditure  
290 reduction in MI and a 17% reduction in NY.

291 A difference between programs is one potential explanation. AS-ME  
292 implementation processes differ from many perspectives; however, we can observe only  
293 some of them from claims data (e.g., place of service, provider). Specifically, 77% of AS-  
294 ME claims in NY were in a Physician's office, whereas most of them (65%) in MI took  
295 place in outpatient hospitals. In NY, pediatricians (70%) were commonly responsible for  
296 AS-ME while in MI, the primary care physicians (60%) were. Additionally, intervention  
297 populations in NY and MI were different based on their average utilizations in 2010. In  
298 these states, AS-ME may have been given to different patient groups based on the severity  
299 of asthma. Some of these differences may have been due to differences in procedure  
300 coding systems, state regulations, or rules that determined the target populations for the  
301 interventions.

302 In most cases, the reductions in the probability of healthcare utilization are  
303 consistent from state to state. The results from nebulizer utilization models showed that  
304 with the nebulizer intervention, NY patients were five times more likely to decrease IP  
305 utilization and 1.7 times less likely to reduce ED utilization compared to the MI  
306 intervention patients. This suggests that there may be a shifting of healthcare resources,  
307 e.g., a proportion of IP visits are handled in the ED, and ED visits are reduced with more  
308 PCP visits.

309 Our results on AS-ME are consistent with previous studies. AS-ME can reduce  
310 ED and IP utilization (22-25), decrease the cost of utilization, improve medication  
311 adherence (ASM, AMR, MMA in Tables 1 and 2), and reduce asthma medication costs,  
312 which can be caused by excessive use of relievers. Lower AMRs indicate the possibility  
313 of higher consumption of relievers. AS-ME improves controller adherence since MMA  
314 increases with AS-ME patients more than control patients. Whereas, the number of claims

315 drops for short-acting inhaled beta-agonists (SABA), which is associated with increased  
316 AMR.

317 The results show that the effect of nebulizer and spacer in the treatment of asthma  
318 was similar to other studies (26,27). There was limited evidence for the impact either way  
319 of the influenza vaccine on asthma exacerbations in pediatric asthma patients (28).  
320 Further, some studies showed no effect from the influenza vaccine on health outcomes  
321 for children with asthma (29-31). However, a flu infection can trigger asthma attacks and  
322 a need for quick relievers (12). Patients who received an influenza vaccine may decrease  
323 their medication costs due to an influenza case averted or shortened by the vaccine.

324 The raw data in Tables 1 and 2 showed that the percentage reduction in “average”  
325 IP visits is more significant than the percentage reduction in “average” ED visits for some  
326 interventions (nebulizer for both states and AS-ME in NY). However, Figures 3 and 4  
327 showed that the percentage probability of a reduction in IP utilization is lower than the  
328 percentage probability of a reduction in ED visits. There may be a couple of reasons for  
329 this. An important one is that the regressions that we use in this study account for other  
330 covariates. As mentioned earlier, there may also be additional differences in  
331 implementation in the specific states or for a given intervention.

332 Influenza vaccines (\$12.45-\$32.47 (32)) and spacers (\$4-\$30 (33)) are not costly  
333 investments. While AS-ME interventions are more costly, the AS-ME intervention  
334 population had the highest utilization expenditure reduction compared to the other  
335 intervention populations.

336 We did not use matching methods to create a control group because of two  
337 reasons. First, even if control and intervention populations do not have similar pre-  
338 intervention means, DiD models can generate unbiased estimates (34). Secondly,  
339 matching the control and intervention population can lead to a biased assessment because

340 regression to the mean occurred when the population was selected for a higher/lower-  
341 than-average in the first measurement (2010) (35). The matched population will tend to  
342 regress to the population mean in the second year (2011).

343         The study has limitations. The data analysis started in 2016 with the latest  
344 available MAX data from 2010 and 2011. The results of models depended on the  
345 available data. We were only able to control for certain factors, and it is possible that  
346 unobserved factors could affect the expenditures or utilizations. However, DiD is a useful  
347 tool because it eliminates the need to control all confounding variables (19). In this study,  
348 we consider both population differences (demographics, medication adherence,  
349 utilization) and various interventions within the same model. The intervention and control  
350 patients differed from each other based on the utilization of services in 2011. These  
351 differences could have originated from the intervention and other factors (any other  
352 asthma control efforts not seen in the data). We did not evaluate the effects of intervention  
353 combinations (e.g., AS-ME + Spacer) due to the small sample sizes of the subpopulations.  
354 Throughout the analysis, we did not specify the type of medication (controller, reliever)  
355 obtained with the spacer and nebulizer. The HEDIS measure we use excludes systematic  
356 corticosteroids, which could lead to a misestimation of medication costs.

357         We assume that the patients who have a claim for intervention indeed receive the  
358 intervention. On the other hand, patients defined for the control group never received that  
359 intervention, while some may have received it from other sources (e.g., spacer, influenza  
360 vaccine). We are accepting that uncertainty can exist, and we acknowledge that statistical  
361 analysis does not always indicate an essential relationship. The evaluation of observed  
362 results from clinical trials could give more precise estimates about effects and  
363 associations (36,37).

## 364 **Conclusions**

365 Previous studies (17,22,25-29,31), literature reviews or meta-analysis (23,24,30), showed  
366 the impact of asthma interventions on a population by looking at them individually, which  
367 can lead to under- or over-estimating the set of effects taken in total. In this study, we  
368 consider both population differences (demographics, medication adherence, utilization)  
369 and various interventions within the same model in order to develop a better estimate of  
370 the overall effect of multiple interventions.

371 This analysis provides evidence to policymakers about the benefits of the  
372 interventions of influenza vaccines, spacers, AS-ME, and nebulizers on health outcomes  
373 of pediatric asthma patients. Influenza vaccines were shown to be the most effective  
374 intervention on medication expenditures. AS-ME programs showed the highest  
375 utilization expenditure reductions overall. AS-ME also improved medication adherence  
376 and reduced asthma medication costs caused by the utilization of rescue medications. The  
377 spacer and nebulizer decreased utilization expenditure, which was caused by the  
378 reduction in the probability of ED and IP utilization. Although the percentage of patients  
379 that benefited from the interventions were low, promoting these interventions in other  
380 states or health systems could decrease the utilization cost and the frequency of healthcare  
381 utilization by the sickest patients while improving medication compliance of patients.

382

383

384

385

386

387

388

389

390

391

392



## 393 **References**

- 394 1. American Academy of Allergy Asthma and Immunology. Asthma. Milwaukee,  
395 WI: AAAAI; 2020. [accessed 2020 May 24]. [https://www.aaaai.org/conditions-and-](https://www.aaaai.org/conditions-and-treatments/asthma)  
396 [treatments/asthma](https://www.aaaai.org/conditions-and-treatments/asthma).
- 397 2. American Academy of Allergy Asthma and Immunology. Asthma Statistics.  
398 Milwaukee, WI: AAAAI; 2020. [accessed 2020 May 24]. [https://www.aaaai.org/about-](https://www.aaaai.org/about-aaaai/newsroom/asthma-statistics)  
399 [aaaai/newsroom/asthma-statistics](https://www.aaaai.org/about-aaaai/newsroom/asthma-statistics).
- 400 3. Nurmagambetov T, Kuwahara R, Garbe P. The Economic Burden of Asthma in  
401 the United States, 2008-2013. *Ann Am Thorac Soc*. 2018;15(3):348-56.
- 402 4. American Lung Association. Asthma and Children Fact Sheet. 2020. [accessed  
403 2020 May 24]. [https://www.lung.org/lung-health-diseases-](https://www.lung.org/lung-health-diseases/lung-disease-lookup/asthma/learn-about-asthma/asthma-children-facts-sheet)  
404 [lookup/asthma/learn-about-asthma/asthma-children-facts-sheet](https://www.lung.org/lung-health-diseases/lung-disease-lookup/asthma/learn-about-asthma/asthma-children-facts-sheet).
- 405 5. Zahran HS, Bailey CM, Damon SA, Garbe PL, Breyse PN. Vital Signs:  
406 Asthma in Children - United States, 2001-2016. *MMWR Morb Mortal Wkly Rep*.  
407 2018;67(5):149-55.
- 408 6. King-Biggs MB. Asthma. *Ann Intern Med*. 2019;171(7):ITC49-ITC64.
- 409 7. Centers for Disease Control and Prevention. The 6|18 initiative: accelerating  
410 evidence into action. Atlanta, GA: CDC; 2016. [accessed 2020 May 24].  
411 [www.cdc.gov/sixeighteen/](http://www.cdc.gov/sixeighteen/).
- 412 8. Moore RH, Wood RA. Patient education: Asthma inhaler techniques in children  
413 (Beyond the Basics). Forthcoming.
- 414 9. George M, Bender B. New insights to improve treatment adherence in asthma  
415 and COPD. *Patient Prefer Adherence*. 2019;13:1325-34.
- 416 10. Harver A, Kotses H. Asthma, health and society a public health perspective.  
417 New York: Springer; 2010.
- 418 11. Centers for Disease Control and Prevention. Flu and People with Asthma.  
419 Atlanta, GA: CDC; 2019. [accessed 2020 May 24].  
420 <https://www.cdc.gov/flu/highrisk/asthma.htm>.
- 421 12. Wakefield DB, Cloutier MM. Modifications to HEDIS and CSTE algorithms  
422 improve case recognition of pediatric asthma. *Pediatr Pulmonol*. 2006;41(10):962-71.  
423 doi:10.1002/ppul.20476.
- 424 13. National Committee for Quality Assurance. HEDIS Measures. Washington, DC:  
425 NCQA; 2020. [accessed 2020 July 24]

- 426 14. U.S. Census Bureau. American Fact Finder. Suitland-Silver Hill, MD: USCB;  
427 2018. [accessed 2018 April 4].  
428 <https://factfinder.census.gov/faces/nav/jsf/pages/searchresults.xhtml?refresh=t>.
- 429 15. Trogon JG, Nurmagambetov TA, Thompson HF. The economic implications of  
430 influenza vaccination for adults with asthma. *Am J Prev Med.* 2010;39(5):403-10.
- 431 16. Sabato K, Ward P, Hawk W, Gildengorin V, Asselin JM. Randomized  
432 controlled trial of a breath-actuated nebulizer in pediatric asthma patients in the  
433 emergency department. *Respir Care.* 2011;56(6):761-70.
- 434 17. Swann JL, Griffin PM, Keskinocak P, Bieder I, Yildirim FM, Nurmagambetov  
435 T, et al. Return on investment of self-management education and home visits for  
436 children with asthma. *J Asthma.* 2019:1-10.
- 437 18. Centers for Disease Control and Prevention. Quality Measures Summary.  
438 Atlanta, GA: CDC; 2015. [accessed 2018 May 10].  
439 [https://www.cdc.gov/asthma/pdfs/quality\\_measures\\_summary\\_3\\_18\\_15.pdf](https://www.cdc.gov/asthma/pdfs/quality_measures_summary_3_18_15.pdf).
- 440 19. Lechner M. Estimation of Causal Effects by Difference-in-Difference Methods.  
441 Hanover, MA: Now; 2010. p. 224.
- 442 20. Gertler P, World Bank. Impact evaluation in practice. Washington, D.C.: World  
443 Bank; 2016.
- 444 21. Fox J. Applied regression analysis and generalized linear models. Third edition.  
445 ed. Los Angeles: SAGE; 2016. xxiv, 791 pages p.
- 446 22. Woods ER, Bhaumik U, Sommer SJ, Ziniel SI, Kessler AJ, Chan E, et al.  
447 Community asthma initiative: evaluation of a quality improvement program for  
448 comprehensive asthma care. *Pediatrics.* 2012;129(3):465-72. doi:10.1542/peds.2010-  
449 3472.
- 450 23. Rangachari P, May KR, Stepleman LM, Tinggen MS, Looney S, Liang Y, et al.  
451 Measurement of Key Constructs in a Holistic Framework for Assessing Self-  
452 Management Effectiveness of Pediatric Asthma. *Int J Environ Res Public Health.*  
453 2019;16(17).
- 454 24. Hsu J, Wilhelm N, Lewis L, Herman E. Economic Evidence for US Asthma  
455 Self-Management Education and Home-Based Interventions. *J Allergy Clin Immunol*  
456 *Pract.* 2016;4(6):1123-34 e27.
- 457 25. Campbell JD, Brooks M, Hosokawa P, Robinson J, Song L, Krieger J.  
458 Community Health Worker Home Visits for Medicaid-Enrolled Children with Asthma:  
459 Effects on Asthma Outcomes and Costs. *Am J Public Health.* 2015;105(11):2366-72.

- 460 26. Mitselou N, Hedlin G, Hederos CA. Spacers versus nebulizers in treatment of  
461 acute asthma - a prospective randomized study in preschool children. *J Asthma*.  
462 2016;53(10):1059-62. doi:10.1080/02770903.2016.1185114.
- 463 27. Magee JS, Jones SM, Ayers ME, Golden W, Vargas PA. Access to spacers and  
464 peak flow meters among medicaid patients with asthma. *J Asthma*. 2002;39(8):687-91.
- 465 28. Ong BA, Forester J, Fallot A. Does influenza vaccination improve pediatric  
466 asthma outcomes? *J Asthma*. 2009;46(5):477-80.
- 467 29. Greenhawt MJ. Influenza vaccination in asthmatic patients. *J Allergy Clin*  
468 *Immunol*. 2014;133(4):1233-4.
- 469 30. Vasileiou E, Sheikh A, Butler C, El Ferkh K, von Wissmann B, McMenemy J,  
470 et al. Effectiveness of Influenza Vaccines in Asthma: A Systematic Review and Meta-  
471 Analysis. *Clin Infect Dis*. 2017;65(8):1388-95.
- 472 31. Friedman BC, Goldman RD. Influenza vaccination for children with asthma.  
473 *Can Fam Physician*. 2010;56(11):1137-9.
- 474 32. Centers for Disease Control and Prevention. Pediatric Influenza Vaccine Price  
475 List. Atlanta, GA: CDC; 2020. [accessed 2020 May 23].  
476 [https://www.cdc.gov/vaccines/programs/vfc/awardees/vaccine-management/price-](https://www.cdc.gov/vaccines/programs/vfc/awardees/vaccine-management/price-list/index.html#flu)  
477 [list/index.html#flu](https://www.cdc.gov/vaccines/programs/vfc/awardees/vaccine-management/price-list/index.html#flu).
- 478 33. Family Practice Notebook. Spacer Devices for Asthma Inhalers. 2020. [accessed  
479 2020 May 23]. <https://fpnotebook.com/lung/pharm/SpcerDvcsFrAsthmInhlrs.htm>.
- 480 34. Angrist JD, Pischke J-S. Mostly harmless econometrics : an empiricist's  
481 companion. Princeton: Princeton University Press; 2009. xiii, 373 pages p.
- 482 35. Daw JR, Hatfield LA. Matching and Regression to the Mean in Difference-in-  
483 Differences Analysis. *Health Serv Res*. 2018;53(6):4138-56.
- 484 36. Greenland S, Senn SJ, Rothman KJ, Carlin JB, Poole C, Goodman SN, et al.  
485 Statistical tests, P values, confidence intervals, and power: a guide to misinterpretations.  
486 *European journal of epidemiology*. 2016;31(4):337-50.
- 487 37. Wasserstein RL, Schirm AL, Lazar NA. Moving to a world beyond “ $p < 0.05$ ”.  
488 Taylor & Francis; 2019.
- 489  
490  
491

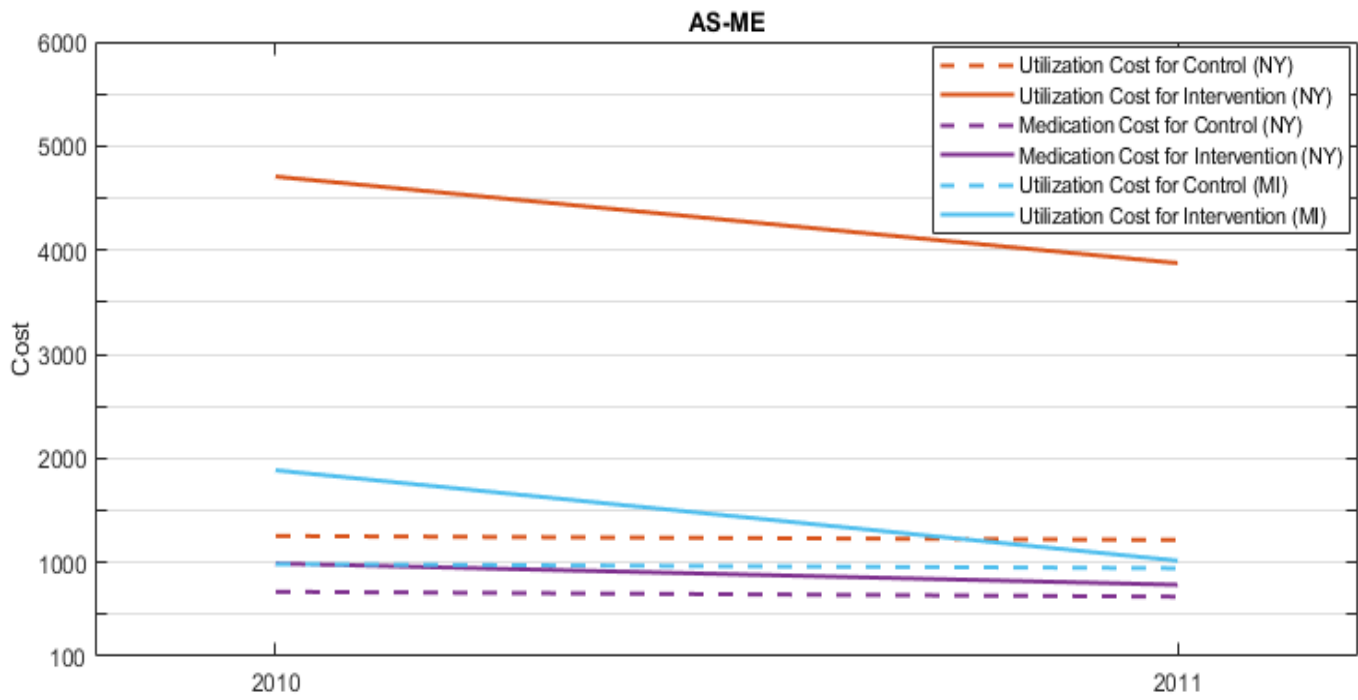


Figure 1. Cost trendlines for AS-ME.

Abbreviations: AS-ME – Asthma self-management education

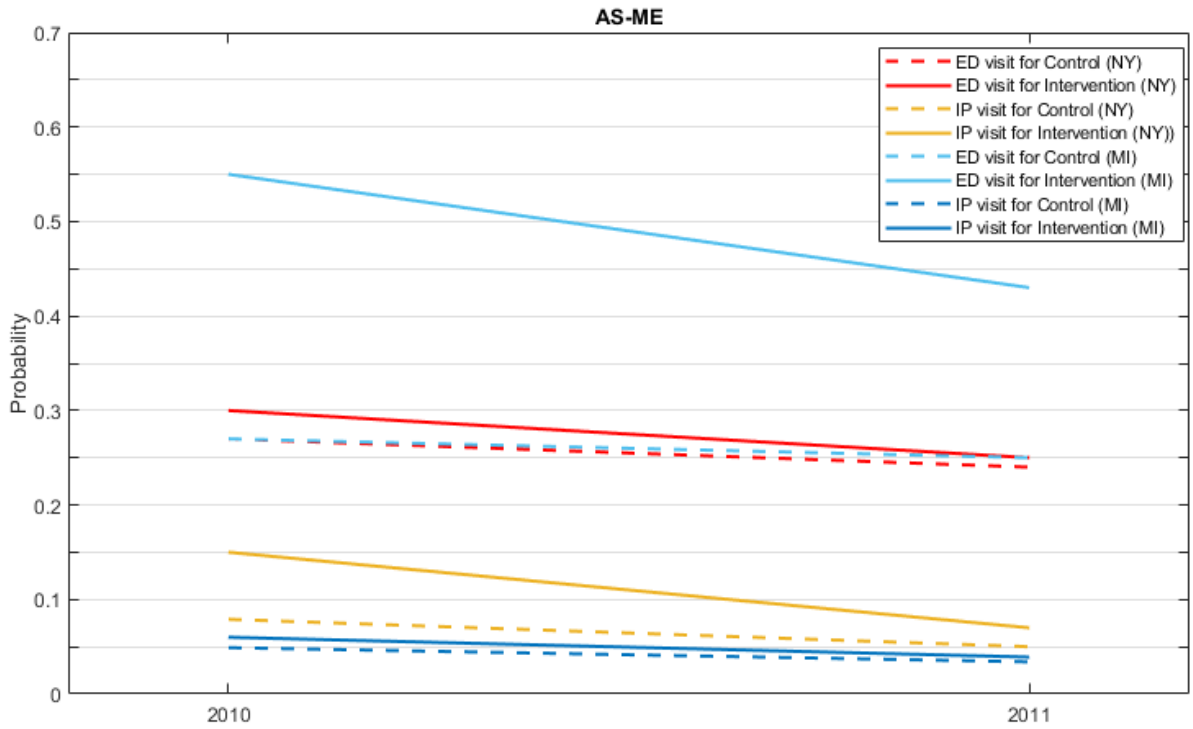


Figure 2. Probability of utilization trendlines for AS-ME.

Abbreviations: AS-ME – Asthma self-management education, ED – Emergency department, IP – Inpatient (hospitalization), PCP – Primary care physician

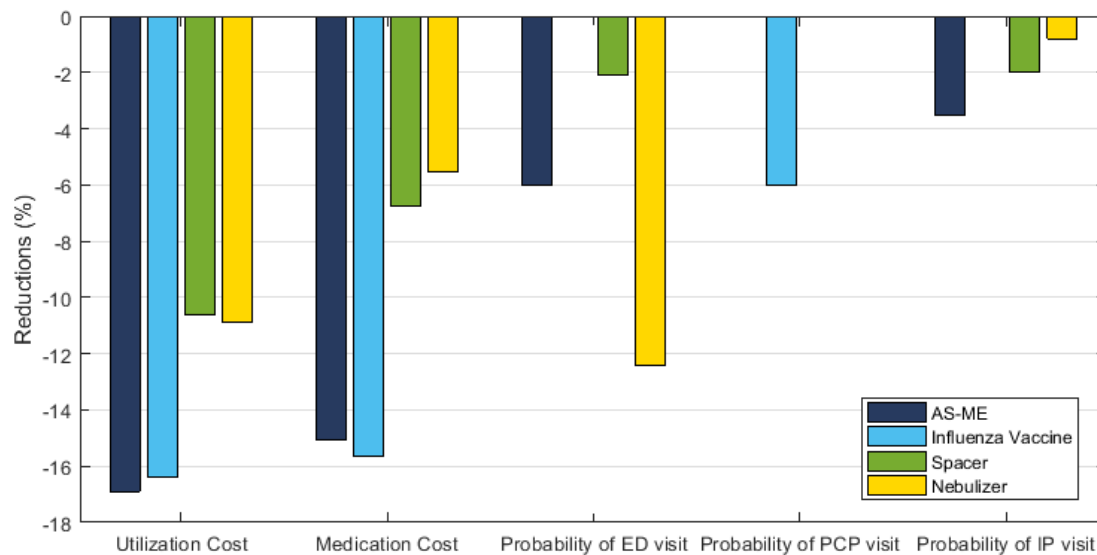


Figure 3. Summary results for intervention effects (New York).

Notes: Calculations performed with using Supplementary Tables S1 and S2. Utilizations are transformed to % changes by DiD estimator  $\times 100$  and costs are transformed with using  $e^{\text{DiD estimator}} - 1 \times 100$ .

Abbreviations: AS-ME – Asthma self-management education, ED – Emergency department, IP – Inpatient (hospitalization), PCP – Primary care physician

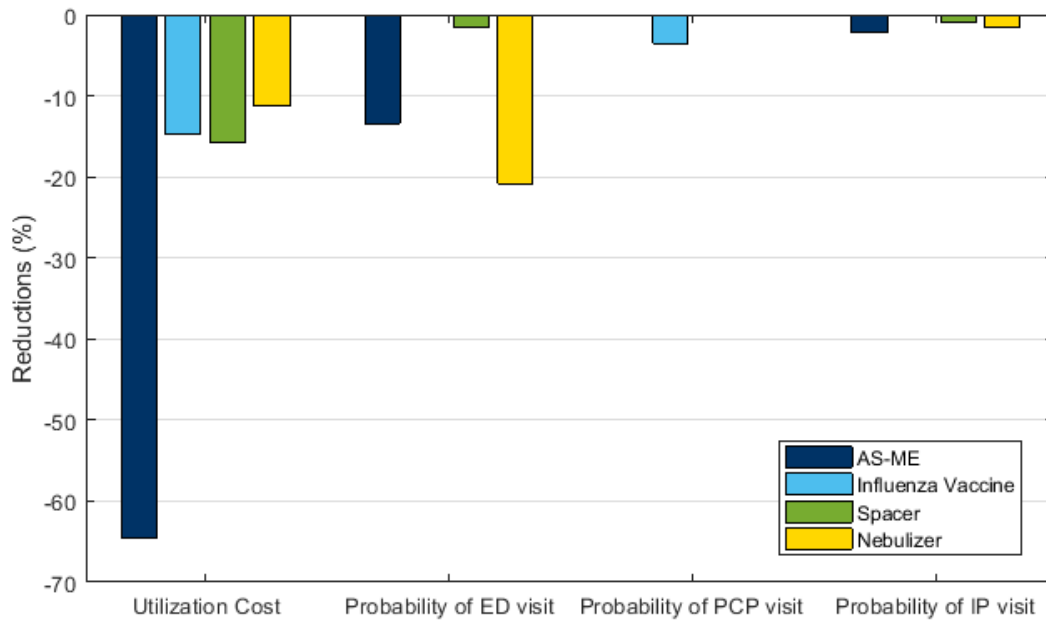


Figure 4. Summary results for intervention effects (Michigan).

Notes: Calculations performed with using Supplementary Tables S1 and S2. Utilizations are transformed to % changes by DiD estimator  $\times 100$  and costs are transformed with using  $e^{\text{DiD estimator}} - 1 \times 100$ .

Abbreviations: AS-ME – Asthma self-management education, ED – Emergency department, IP – Inpatient (hospitalization), PCP – Primary care physician

Table 1. Variable comparison for control and intervention (New York).

Population	AS-ME				Influenza Vaccine			
	Control		Intervention		Control		Intervention	
Year	2010	2011	2010	2011	2010	2011	2010	2011
Number of patients	57804	57804	1566	1566	50948	50948	6856	6856
<b>Utilization (Mean, Std)</b>								
ED visit per patient	0.35 (0.07)	0.35 (0.09)	0.55 (0.14)	0.43 (0.13)	0.36 (0.15)	0.36 (0.15)	0.27 (0.09)	0.28 (0.1)
IP visit per patient	0.07 (0.003)	0.05 (0.002)	0.17 (0.008)	0.08 (0.003)	0.07 (0.004)	0.05 (0.003)	0.06 (0.005)	0.03 (0.002)
PCP visit per patient	0.80 (0.20)	0.74 (0.14)	2.42 (1.02)	1.47 (0.78)	0.78 (0.19)	0.70 (0.18)	1.06 (0.21)	0.97 (0.14)
Non-asthma ED visit per patient	0.93 (0.12)	0.89 (0.10)	0.97 (0.18)	0.86 (0.14)	0.91 (0.16)	0.89 (0.13)	1.05 (0.27)	0.95 (0.12)
<b>Medication Adherence (Mean, Std)</b>								
ASM	0.91 (0.009)	0.93 (0.011)	0.95 (0.02)	0.95 (0.04)	0.91 (0.08)	0.93 (0.004)	0.94 (0.01)	0.95 (0.005)
AMR	0.65 (0.05)	0.66 (0.05)	0.65 (0.05)	0.67 (0.05)	0.64 (0.05)	0.65 (0.05)	0.69 (0.06)	0.70 (0.06)
MMA	0.37 (0.04)	0.40 (0.03)	0.36 (0.04)	0.42 (0.03)	0.36 (0.04)	0.40 (0.04)	0.39 (0.03)	0.44 (0.04)
<b>Demographic Characteristics (%)</b>								
Age 9 - 17	42.88	50.06	35.95	43.93	43.53	50.66	38.10	45.64
Urban	53.83	53.83	50.21	50.21	54.58	54.58	48.25	48.25
Suburban	22.17	22.17	21.23	21.23	21.42	21.42	27.75	27.75
<b>Intervention (%)</b>								
Patient with Spacer	0.74	5.53	2.81	7.92	0.70	5.53	1.01	5.51
Patient with Nebulizer	22.53	21.73	44.89	27.97	22.31	21.88	24.18	20.60
Patient with Influenza Vaccine	11.86	11.46	13.73	12.52	0	8.45	100	33.78
Patient with AS-ME	0	0	100	0	0	0	0	0



Table 1. Variable comparison for control and intervention (New York) (continued).

Population	Spacer				Nebulizer			
	Control		Intervention		Control		Intervention	
Year	2010	2011	2010	2011	2010	2011	2010	2011
Number of patients	52655	52655	1814	1814	37256	37256	7989	7989
<b>Utilization (Mean, Std)</b>								
ED visit per patient	0.33 (0.05)	0.33 (0.05)	0.55 (0.13)	0.48 (0.11)	0.18 (0.07)	0.16 (0.07)	0.60 (0.27)	0.33 (0.12)
IP visit per patient	0.06 (0.002)	0.05 (0.002)	0.16 (0.007)	0.09 (0.005)	0.03 (0.002)	0.02 (0.002)	0.11 (0.005)	0.07 (0.002)
PCP visit per patient	0.76 (0.27)	0.72 (0.27)	1.31 (0.45)	1.20 (0.37)	0.60 (0.11)	0.56 (0.13)	1.27 (0.39)	0.89 (0.25)
Non-asthma ED visit per patient	0.89 (0.17)	0.87 (0.12)	1.32 (0.37)	1.13 (0.35)	0.79 (0.14)	0.79 (0.12)	1.20 (0.51)	1.00 (0.47)
<b>Medication Adherence (Mean, Std)</b>								
ASM	0.92 (0.01)	0.93 (0.013)	0.85 (0.08)	0.89 (0.07)	0.95 (0.02)	0.96 (0.03)	0.87 (0.05)	0.91 (0.03)
AMR	0.66 (0.06)	0.66 (0.08)	0.61 (0.07)	0.66 (0.07)	0.69 (0.08)	0.69 (0.06)	0.60 (0.07)	0.64 (0.07)
MMA	0.36 (0.02)	0.40 (0.04)	0.36 (0.03)	0.39 (0.04)	0.37 (0.03)	0.42 (0.05)	0.36 (0.03)	0.40 (0.04)
<b>Demographic Characteristics (%)</b>								
Age 9 - 17	44.82	52.03	21.83	27.34	49.06	56.60	32.48	38.49
Urban	52.56	52.56	59.65	59.65	49.38	49.38	56.67	56.67
Suburban	23.44	23.44	16.35	16.35	26.62	26.62	19.33	19.33
<b>Intervention (%)</b>								
Patient with Spacer	0	0	100	0	0.31	4.05	2.03	5.91
Patient with Nebulizer	19.45	20.45	92.28	28.89	0	0	100	0
Patient with Influenza Vaccine	11.85	11.42	11.74	10.64	11.86	11.62	12.82	11.10
Patient with AS-ME	0	0	0	0	0	0	0	0

Abbreviations:  
AMR –

Asthma medication ratio, ASM – Appropriate medications for people with asthma, AS-ME – Asthma self-management education, ED – Emergency department, IP – Inpatient (hospitalization), PCP – Primary care physician, Std – Standard deviation

Table 2. Variable comparison for control and intervention populations (Michigan).

Population	AS-ME				Influenza Vaccine			
	Control		Intervention		Control		Intervention	
Year	2010	2011	2010	2011	2010	2011	2010	2011
Number of patients	13643	13643	475	475	9517	9517	4126	4126
<i>Utilization (Mean, Std)</i>								
ED visit per patient	0.36 (0.07)	0.32 (0.06)	0.82 (0.23)	0.41 (0.17)	0.40 (0.13)	0.35 (0.11)	0.28 (0.1)	0.25 (0.09)
IP visit per patient	0.05 (0.003)	0.03 (0.003)	0.08 (0.004)	0.04 (0.002)	0.05 (0.003)	0.04 (0.003)	0.04 (0.003)	0.02 (0.003)
PCP visit per patient	1.61 (0.40)	1.30 (0.28)	2.21 (1.02)	1.35 (0.52)	1.47 (0.24)	1.22 (0.19)	1.93 (0.19)	1.49 (0.38)
Non-asthma ED visit per patient	1.00 (0.15)	0.86 (0.10)	1.26 (0.22)	1.34 (0.14)	0.98 (0.12)	0.84 (0.11)	1.05 (0.32)	0.90 (0.31)
<i>Medication Adherence (Mean, Std)</i>								
ASM	0.28 (0.04)	0.91 (0.05)	0.36 (0.09)	0.91 (0.04)	0.27 (0.05)	0.90 (0.02)	0.30 (0.07)	0.94 (0.01)
AMR	0.21 (0.01)	0.63 (0.09)	0.27 (0.02)	0.59 (0.1)	0.20 (0.01)	0.61 (0.12)	0.22 (0.01)	0.68 (0.15)
MMA	0.11 (0.007)	0.34 (0.05)	0.16 (0.006)	0.45 (0.05)	0.11 (0.004)	0.33 (0.05)	0.13 (0.004)	0.35 (0.06)
<i>Demographic Characteristics (%)</i>								
Age 9 - 17	49.1	58.5	45.5	54.9	51.5	60.5	43.5	53.8
Urban	43.0	43.0	39.6	39.6	45.4	45.4	37.7	37.7
Suburban	45.7	45.7	48.6	48.6	43.7	43.7	50.4	50.4
<i>Intervention (%)</i>								
Patient with Spacer	16.9	9.8	24.4	8.6	14.9	9.1	21.4	11.6
Patient with Nebulizer	43.2	34.9	59.8	40.2	43.4	35.5	42.7	33.5
Patient with Influenza Vaccine	30.2	25.5	29.1	25.5	0	16.6	100	46.1
Patient with AS-ME	0	0	100	0	0	0	0	0

Table 2. Variable comparison for control and intervention populations (Michigan) (continued).

Population	Spacer				Nebulizer			
	Control		Intervention		Control		Intervention	
Year	2010	2011	2010	2011	2010	2011	2010	2011
Number of patients	10426	10426	1875	1875	5980	5980	2903	2903
<b>Utilization (Mean, Std)</b>								
ED visit per patient	0.36 (0.05)	0.31 (0.05)	0.35 (0.05)	0.28 (0.03)	0.62 (0.28)	0.55 (0.11)	0.50 (0.09)	0.12 (0.04)
IP visit per patient	0.04 (0.002)	0.03 (0.002)	0.05 (0.002)	0.03 (0.002)	0.07 (0.002)	0.05 (0.002)	0.05 (0.002)	0.02 (0.002)
PCP visit per patient	1.56 (0.41)	1.24 (0.38)	1.92 (0.4)	1.26 (0.22)	2.72 (1.02)	2.16 (0.81)	1.92 (0.52)	1.12 (0.37)
Non-asthma ED visit per patient	0.94 (0.17)	0.81 (0.12)	1.11 (0.29)	0.42 (0.32)	0.62 (0.14)	0.52 (0.12)	1.13 (0.38)	1.23 (0.31)
<b>Medication Adherence (Mean, Std)</b>								
ASM	0.27 (0.09)	0.90 (0.07)	0.38 (0.08)	0.95 (0.03)	0.30 (0.1)	0.99 (0.008)	0.28 (0.07)	0.95 (0.03)
AMR	0.20 (0.01)	0.62 (0.07)	0.27 (0.01)	0.67 (0.08)	0.23 (0.01)	0.69 (0.09)	0.20 (0.01)	0.67 (0.1)
MMA	0.11 (0.009)	0.34 (0.04)	0.17 (0.006)	0.34 (0.09)	0.12 (0.006)	0.36 (0.01)	0.12 (0.006)	0.35 (0.01)
<b>Demographic Characteristics (%)</b>								
Age 9 - 17	54.5	63.7	31.9	42.5	58.8	68.5	43.6	53.1
Urban	44.3	44.3	38.1	38.1	35.0	35.0	42.5	42.5
Suburban	44.2	44.2	50.6	50.6	51.0	51.0	46.2	46.2
<b>Intervention (%)</b>								
Patient with Spacer	0	0	100	0	14.7	7.6	20.5	9.6
Patient with Nebulizer	41.1	33.6	49.2	34.5	0	0	100	0
Patient with Influenza Vaccine	28.2	24.5	37.5	28.5	30.7	25.7	31.3	25.9
Patient with AS-ME	0	0	0	0	0	0	0	0

Abbreviation

s: AMR – Asthma medication ratio, ASM – Appropriate medications for people with asthma, AS-ME – Asthma self-management education, ED – Emergency department, IP – Inpatient (hospitalization), PCP – Primary care physician, Std – Standard deviation