

Remdesivir for the treatment of COVID-19: A living systematic review

Verdugo-Paiva F^{1,2}, Acuña P^{3,4}, Sola I^{5,6,7}, Rada G^{1,2}. COVID-19 L·OVE Working Group

1. Epistemonikos Foundation, Santiago, Chile
2. UC Evidence Center, Cochrane Chile Associated Center, Pontificia Universidad Católica de Chile, Santiago, Chile
3. Unidad de Infectología, Hospital Dr Sótero del Río, Santiago, Chile
4. Unidad de Infectología, Hospital Clínico Dra Eloísa Díaz, La Florida, Santiago, Chile
5. Biomedical Research Institute Sant Pau, Barcelona, Spain
6. Iberoamerican Cochrane Centre, Barcelona, Spain
7. CIBER Epidemiología y Salud Pública (CIBERESP)

Abstract

Objective

This living systematic review aims to provide a timely, rigorous and continuously updated summary of the evidence available on the role of remdesivir in the treatment of patients with COVID-19.

Methods

We adapted an already published common protocol for multiple parallel systematic reviews to the specificities of this question.

Eligible studies were randomised trials evaluating the effect of remdesivir versus placebo or no treatment.

We conducted searches in the L·OVE (Living Overview of Evidence) platform for COVID-19, a system that maps PICO questions to a repository maintained through regular searches in electronic databases, preprint servers, trial registries and other resources relevant to COVID-19. All the searches covered the period until 25 August 2020. No date or language restrictions were applied.

Two reviewers independently evaluated potentially eligible studies according to predefined selection criteria, and extracted data on study characteristics, methods, outcomes, and risk of bias, using a predesigned, standardised form.

We performed meta-analyses using random-effect models and assessed overall certainty in evidence using the GRADE approach.

A living, web-based version of this review will be openly available during the COVID-19 pandemic.

We will resubmit it every time the conclusions change or whenever there are substantial updates.

NOTE: This preprint reports new research that has not been certified by peer review and should not be used to guide clinical practice.

Results

Our search strategy yielded 574 references. Finally, we included 3 randomised trials evaluating remdesivir in addition to standard care versus standard care alone. The evidence is very uncertain about the effect of remdesivir on mortality (RR 0.7, 95% CI 0.46 to 1.05; very low certainty evidence) and the need for invasive mechanical ventilation (RR 0.69, 95% CI 0.39 to 1.24; very low certainty evidence). On the other hand, remdesivir likely results in a large reduction in the incidence of adverse effects in patients with COVID-19 (RR 1.29, 95% CI 0.58 to 2.84; moderate certainty evidence).

Conclusions

The evidence is insufficient for the outcomes critical for making decisions about the role of remdesivir in the treatment of patients with COVID-19, so it is not possible to balance the potential benefits, if any, with the adverse effects and costs.

PROSPERO Registration number

CRD42020183384

Keywords

COVID-19, Coronavirus disease, Severe Acute Respiratory Syndrome Coronavirus 2, Coronavirus Infections, Systematic Review, Remdesivir, Antivirals

Remdesivir for the treatment of COVID-19						
Patients	Confirmed COVID-19					
Intervention	Remdesivir ± standard treatment (as defined by the studies)					
Comparison	Placebo or no treatment ± standard treatment (as defined by the studies)					
Outcomes	Relative effect (95% CI) -- Patients/ studies	Absolut effect*			Certainty of evidence (GRADE)	Key messages
		WITHOUT Remdesivir	WITH Remdesivir	Difference (CI 95%)		
All-cause mortality	RR 0.7 (0.46 to 1.05) 1879 patients in 3 studies [24,25,26]	85 per 1000	60 per 1000	26 less (34 less to 4 more)	⊕○○○ Very low (1)	The evidence is very uncertain about the effect of remdesivir on mortality in patients with COVID-19
Invasive mechanical ventilation	RR 0.69 (0.39 to 1.24) 1659 patients in 3 study [24,25,26]	116 per 1000	80 per 1000	36 less (44 less to 6 more)	⊕○○○ Very low (2)	The evidence is very uncertain about the effect of remdesivir on the need for invasive mechanical ventilation in patients with COVID-19
Adverse effects leading to discontinuation	RR 1.29 (0.58 to 2.84) 1296 patients in 2 study [24,25]	67 per 1000	86 per 1000	19 more (36 less to 3 more)	⊕⊕⊕○ Moderate (3)	Remdesivir likely results in a large reduction in the incidence of adverse effects
Time to viral clearance	--	Not reported	--	--	(4)	This outcome was not measured or reported by the included studies
Length of hospital stay	MD 1 (-2.86 to 4.86) 236 patients in 1 study [25]	24 days	23 days	1 day less (6 days less to 3 days more)	⊕⊕○○ Low (5)	Remdesivir may result in little to no difference in the duration of hospitalisation
Serious adverse effects	RR 0.74 (0.62 to 0.9) 1880 patients in 3 study [24,25,26]	224 per 1000	166 per 1000	58 less (85 less to 22 more)	⊕⊕⊕○ Moderate (7)	Remdesivir likely reduces the number of serious adverse effects
CI: confidence interval; RR: Risk ratio; MD: Mean difference; GRADE: Grading of Recommendations Assessment, Development and Evaluation.						
*Other trial reported length of hospital stay, but data was not usable in meta-analysis						
1 - The certainty of the evidence is based in the following judgments: Risk of bias: downgraded in one level since the overall risk of bias for studies was evaluated as 'high' and 'some concerns'; Inconsistency: downgraded in one level for inconsistency since the studies show contradictory results; Indirectness: no concerns; Imprecision: downgraded in one level for imprecision since each end of the confidence interval would lead to different conclusions; Publication bias: no concerns.						
ty of the evidence is based in the following judgments: Risk of bias: downgraded in one level since the overall risk of bias for studies was evaluated as 'high' and 'some concerns'; no concerns; Indirectness: no concerns; Imprecision: downgraded in two levels for imprecision since each end of the confidence interval would lead to widely different conclusions; as: no concerns.						
3- The certainty of the evidence is based in the following judgments: Risk of bias: downgraded in one level since the overall risk of bias for studies was evaluated as 'high' and 'some concerns'; Inconsistency: no concerns; Indirectness: no concerns; Imprecision: no concerns; Publication bias: no concerns.						
4- The certainty of the evidence cannot be estimated since the studies did not report this outcome. It is highly likely that the outcome was measured in the studies.						
5- The certainty of the evidence is based in the following judgments: Risk of bias: downgraded in one level since the overall risk of bias for studies was evaluated as 'high' and 'some concerns'; Inconsistency: no concerns; Indirectness: no concerns; Imprecision: downgraded in one level for imprecision, since each end of the confidence interval would lead to different conclusions; Publication bias: no concerns.						
6- The certainty of the evidence cannot be estimated since the studies did not report this outcome. It is highly likely that the outcome was measured in the studies.						
7- The certainty of the evidence is based in the following judgments: Risk of bias: downgraded in one level since the overall risk of bias for studies was evaluated as 'high' and 'some concerns'; Inconsistency: no concerns; Indirectness: no concerns; Imprecision: no concerns; Publication bias: no concerns.						

Introduction

COVID-19 is an infection caused by the SARS-CoV-2 coronavirus [1]. It was first identified in Wuhan, China, on December 31, 2019 [2]; seven months later, more than fifteen million cases of contagion had been identified across 188 countries [3]. On March 11, 2020, WHO characterised the COVID-19 outbreak as a pandemic [1].

While the majority of cases result in mild symptoms, some might progress to pneumonia, acute respiratory distress syndrome and death [4],[5],[6]. The case fatality rate reported across countries, settings and age groups is highly variable, but it ranges from about 0.5% to 10% [7]. In hospitalised patients, it has been reported to be higher than 10% in some centres [8].

One of the strategies underway to identify effective interventions for COVID-19 is repurposing drugs that have been used for the treatment of other diseases.

Remdesivir is among these investigational medications. It is a directly acting antiviral agent, initially developed for the treatment of Ebola virus during the 2014 outbreak in Western Africa [9].

Remdesivir displays antiviral activity against many RNA viruses including SARS-CoV-2, in both in vitro [10] and animal studies [11].

Following the publication of the ACTT-1, a trial conducted by the National Institute of Allergy and Infectious Diseases (NIAID), the US Food and Drug Administration issued an emergency use authorisation of remdesivir for the treatment of COVID-19 [12].

However, the results of ACTT-1 were questioned immediately, particularly for the decision to stop it early for benefit [13]. On the other hand, the decision of the government of the United States of buying virtually all stocks of the drug, generated an urgent need of independent, transparent information about the effects of remdesivir for COVID-19.

Using innovative and agile processes, taking advantage of technological tools, and resorting to the collective effort of several research groups, this living systematic review aims to provide a timely, rigorous and continuously updated summary of the evidence available on the effects of remdesivir in patients with COVID-19.

Methods

This manuscript complies with the 'Preferred Reporting Items for Systematic reviews and Meta-Analyses' (PRISMA) guidelines for reporting systematic reviews and meta-analyses [14] (see Appendix 1 - PRISMA Checklist).

A protocol stating the shared objectives and methodology of multiple evidence syntheses (systematic reviews and overviews of systematic reviews) to be conducted in parallel for different

questions relevant to COVID-19 was published elsewhere [15]. The review was registered in PROSPERO with the number CRD42020183384 and a full protocol was made available [16].

Search strategies

Electronic searches

We used the search strategies already developed in the L-OVE (Living Overview of Evidence) platform (<https://www.iloveevidence.com>), a system that maps the evidence to different research questions. The full methods to maintain L-OVE are described in the website, but the process to devise the search strategies can be briefly described as:

- Identification of terms relevant to the population and intervention components of the search strategy, applying Word2vec technology [17] to the corpus of documents available in Epistemonikos Database.
- Discussion of terms with content and methods experts to identify relevant, irrelevant and missing terms.
- Creation of a sensitive boolean strategy encompassing all the relevant terms
- Iterative analysis of articles missed by the boolean strategy, and refinement of the strategy accordingly.

All the information in the L-OVE platform comes from a repository developed and maintained by Epistemonikos Foundation through the screening of different sources relevant to COVID-19. At the time of releasing this article, this repository included more than 66989 articles relevant to Coronavirus disease, coming from the following databases, trial registries, preprint servers and websites relevant to COVID-19: Epistemonikos database, Pubmed, EMBASE, ICTRP Search Portal, Clinicaltrials.gov, ISRCTN registry, Chinese Clinical Trial Registry, IRCT - Iranian Registry of Clinical Trials, EU Clinical Trials Register: Clinical trials for covid-19, NIPH Clinical Trials Search (Japan) - Japan Primary Registries Network (JPRN) (JapicCTI, JMACCT CTR, jRCT, UMIN CTR), UMIN-CTR - UMIN Clinical Trials Registry, JRCT - Japan Registry of Clinical Trials, JAPIC Clinical Trials Information, Clinical Research Information Service (CRiS), Republic of Korea, ANZCTR - Australian New Zealand Clinical Trials Registry, ReBec - Brazilian Clinical Trials Registry, CTRI - Clinical Trials Registry - India, DRKS - German Clinical Trials Register, LBCTR - Lebanese Clinical Trials Registry, TCTR - Thai Clinical Trials Registry, NTR - The Netherlands National Trial Register, PACTR - Pan African Clinical Trial Registry, REPEC - Peruvian Clinical Trial Registry, SLCTR - Sri Lanka Clinical Trials Registry, medRxiv Preprints, bioRxiv Preprints, SSRN Preprints, WHO COVID-19 database.

The last version of the methods, the total number of sources screened, and a living flow diagram and report of the project is updated regularly on the website [18].

The repository is continuously updated [18] and the information is transmitted in real time to the L-OVE platform, however, it was last checked for this review the day before release on 25 August 2020. The searches covered the period from the inception date of each database, and no study design, publication status or language restriction was applied.

The following strategy was used to retrieve from the repository the articles potentially eligible for this review.

coronavir* OR coronavirus* OR betacoronavir* OR "beta-coronavirus" OR "beta-coronaviruses" OR "corona virus" OR "virus corona" OR "corono virus" OR "virus corono" OR hcov* OR covid* OR "2019-ncov" OR cv19* OR "cv-19" OR "cv 19" OR "n-cov" OR ncov* OR (wuhan* and (virus OR viruses OR viral)) OR sars* OR sari OR "severe acute respiratory syndrome" OR mers* OR "middle east respiratory syndrome" OR "middle-east respiratory syndrome" OR "2019-ncov-related" OR "cv-19-related" OR "n-cov-related" AND (remdesivir* OR "GS-5734" OR "GS 5734" OR GS5734*)

Other sources

In order to identify articles that might have been missed in the electronic searches, we proceeded as follows:

- Screened the reference lists of other systematic reviews.
- Scanned the reference lists of selected guidelines, narrative reviews and other documents.

Eligibility criteria

We included randomised controlled trials evaluating patients infected with SARS-CoV-2 of any severity.

The intervention of interest was remdesivir at any dosage, duration, timing or route of administration. The comparison of interest was placebo (remdesivir plus standard of care versus placebo plus standard of care) or no treatment (remdesivir plus standard of care versus standard of care).

Our primary outcome of interest was all-cause mortality at longest follow-up. Secondary outcomes were invasive mechanical ventilation and adverse effects leading to discontinuation.

We also extracted information on the following outcomes: time to viral clearance, length of hospital stay and serious adverse effects.

We did not consider the outcomes as an inclusion criteria during the selection process. Any article meeting all the criteria except for the outcome criterion was preliminarily included and assessed in full text.

Selection of studies

The results of the searches in the individual sources were de-duplicated by an algorithm that compares unique identifiers (database ID, DOI, trial registry ID), and citation details (i.e. author names, journal, year of publication, volume, number, pages, article title, and article abstract). Then, the information matching the search strategy was sent in real-time to the L-OVE platform where at least two authors independently screened the titles and abstracts yielded against the inclusion criteria. We obtained the full reports for all titles that appeared to meet the inclusion criteria or required further analysis and then decided about their inclusion.

We recorded the reasons for excluding trials in any stage of the search and outlined the study selection process in a PRISMA flow diagram which we adapted for the purpose of this project.

Extraction and management of data

Using standardised forms, two reviewers independently extracted the following data from each included trial: study design, setting, participant characteristics (including disease severity and age) and study eligibility criteria; details about the administered intervention and comparison, including dose, duration and timing (i.e. time after diagnosis); the outcomes assessed and the time they were measured; the source of funding of the study and the conflicts of interest disclosed by the investigators; the risk of bias assessment for each individual study.

We resolved disagreements by discussion, with one arbiter adjudicating unresolved disagreements.

Risk of bias assessment

The risk of bias for each randomised trial was assessed by using the 'risk of bias' tool (RoB 2.0: a revised tool to assess risk of bias in randomised trials) [19], considering the following domains of bias for each outcome result of all reported outcomes and time points: bias due to (1) the randomisation process, (2) deviations from intended interventions (effects of assignment to interventions at baseline), (3) missing outcome data, (4) measurement of the outcome, and (5) selection of reported results.

Discrepancies between review authors were resolved by discussion to reach consensus. If necessary, a third review author was consulted to achieve a decision.

Measures of treatment effect

For dichotomous outcomes, we expressed the estimate of treatment effect of an intervention as risk ratios (RR) along with 95% confidence intervals (CI).

For continuous outcomes, we used the mean difference and standard deviation to summarise the data along with 95% CI. For continuous outcomes reported using different scales, the treatment effect was expressed as a standardised mean difference with 95% CI.

Strategy for data synthesis

The results of the search and the selection of the studies is presented, by means of the corresponding flow chart, according to recommendations of the PRISMA statement [14]. For any outcomes where it was not possible to calculate an effect estimate, a narrative synthesis is presented, describing the studies in terms of the direction and the size of effects, and any available measure of precision

For any outcomes where data was available from more than one trial, we conducted a formal quantitative synthesis (meta-analysis) for studies clinically homogeneous using RevMan 5 [20], using the inverse variance method with the random-effects model. We assessed inconsistency by visual inspection of the forest plots and using the I^2 index.

Subgroup and sensitivity analysis

As few trials were found, we did not perform sensitivity or subgroup analysis.

Assessment of certainty of evidence

The certainty of the evidence for all outcomes was judged using the Grading of Recommendations Assessment, Development and Evaluation working group methodology (GRADE Working Group) [21], across the domains of risk of bias, consistency, directness, precision and reporting bias. For the main comparisons and outcomes, we prepared a Summary of Findings (SoF) tables [22],[23].

Living evidence synthesis

An artificial intelligence algorithm deployed in the Coronavirus/COVID-19 topic of the L·OVE platform provides instant notification of articles with a high likelihood of being eligible. The authors review them, decide upon inclusion, and update the living web version of the review accordingly.

This review is part of a larger project set up to produce multiple parallel systematic reviews relevant to COVID-19 [15].

Results

Results of the search

We conducted searches using L·OVE (Living OVERview of Evidence) platform for COVID-19, a system that maps PICO questions to a repository, maintained through regular searches in 27 databases, preprint servers, trial registries and websites relevant to COVID-19. All the searches covered the period until 25 August 2020. No date or language restrictions were applied.

The search in the L·OVE platform yielded 574 records after removal of duplicates. We considered 489 as potentially eligible and obtained and evaluated their full texts. We finally included 3 randomised trials (11 references) [24],[25], [26].

The reasons for excluding studies at the time of full-text review were the following: not a primary study in humans (396 records); wrong study design (51 records) and wrong comparison (3 records).

We also identified 16 ongoing randomised trials.

The complete study selection process is summarised in the PRISMA flow chart (Figure 1) and the full list of included, excluded and ongoing trials is presented in Appendix 2.

Figure 1 - PRISMA Flowchart (prepared by the authors from the study data).



Description of the included studies

The three trials identified were the Adaptive COVID-19 Treatment Trial (ACTT-1 [24]), the CAP-China remdesivir 2 [25] and SIMPLE 2 [26]. All trials evaluated inpatient adults. ACTT-1 required for inclusion that one of the following criteria were also fulfilled: SpO₂ ≤ 94% on room air, requiring supplemental oxygen, requiring mechanical ventilation or radiographic infiltrates by any imaging test. CAP-China remdesivir 2 required that patients had an oxygen saturation of 94% or lower on room air or a ratio of arterial oxygen partial pressure to fractional inspired oxygen of 300 mm Hg or less. Additionally, patients in CAP-China remdesivir 2 had to present within 12 days of symptom onset. SIMPLE 2 [26] required that patients had any radiographic evidence of pulmonary infiltrates and oxygen saturation >94% on room air Table 1 and 2 summarises inclusion criteria of the trials and characteristics of the intervention. More details are presented in Appendix 2.

Table 1 presents the complete inclusion criteria of the trials.

274 Table 1 - Inclusion criteria of the studies

	Age	Setting	Confirmation method	Clinical or severity parameters	Radiological findings as criteria
ACTT-1 [24]	Adults	Hospital	RT-PCR	One of several criteria (SpO ₂ \leq 94% on room air, OR Requiring supplemental oxygen, OR Requiring mechanical ventilation.)	One of several criteria (radiographic infiltrates by any imaging test)
CAP-China remdesivir 2 [25]	Adults	Hospital	RT-PCR	Mandatory (Oxygen saturation of 94% or lower on room air or a ratio of arterial oxygen partial pressure to fractional inspired oxygen of 300 mm Hg or less, and were within 12 days of symptom onset)	Mandatory (pneumonia confirmed by chest imaging)
SIMPLE 2 [26]	Adults and children	Hospital	RT-PCR	Mandatory (SpO ₂ > 94% on room air at screening)	Mandatory (any radiographic evidence of pulmonary infiltrates)

275

276 All trials administered the same doses of remdesivir plus standard care [24] , [25], [26]. One trial
 277 included two intervention arms of remdesivir (5-day and 10-day course of remdesivir) [26]. None of
 278 the trials provide further details regarding the standard care treatment delivered. Two trials
 279 reported that the standard of care was determined by the trial site hospital [24] The other one, only
 280 reported that concomitant use of lopinavir/ritonavir, interferons, and corticoids were permitted
 281 [25].

282 Table 2 - Characteristics of the intervention

	Intervention	Dose	Duration	Standard care
ACTT-1 [24]	Remdesivir	200 mg in day 1, followed by 100 mg qd	10 days	All patients received supportive care according to the standard of care for the trial site hospital. If a hospital had a written policy or guideline for use of other treatments for Covid-19, patients could receive those treatments. In the absence of a written policy or guideline, other experimental treatment or off-label use of marketed medications intended as specific treatment for Covid-19 were prohibited from day 1 through day 29 (though such medications could have been used before enrollment in this trial).
CAP-China remdesivir 2 [25]	Remdesivir	200 mg in day 1, followed by 100 mg qd	10 days	No standard treatment was reported. Patients were permitted concomitant use of lopinavir-ritonavir, interferons, and corticosteroids
SIMPLE 2 [26]	Remdesivir	200 mg in day 1, followed by 100 mg qd	5/10 days	Treatment with standard of care according to local guidelines. The original protocol allowed use of other agents with presumptive activity against SARS-CoV-2 if such use was local standard care. This exception was disallowed in a subsequent amendment.

In total, trials included 1896 hospitalized patients [24], [25], [26]. One trial was conducted in China [25] and the other two were multicenters trials conducted in several countries [24] [26]. All trials included patients with radiologically confirmed pneumonia [25], [25], [26]. Baseline characteristics of participants regarding age, gender, and chronic disease were similar between studies, but the number of patients requiring supplemental oxygen or mechanical ventilation varied substantially between trials [24], [25].

Table 3 - Baseline characteristics of the participants

	ACTT-1 [24]	CAP-China remdesivir 2 [25]	SIMPLE 2 [26]
Number randomised	1063	237	596
Geographic location and Setting	United States, Europe and Asia; inpatient setting	China; inpatient setting	United States, Europe and Asia; inpatient setting
Mean age (years)	58.9	65	57
Females (%)	35.7	41	38.8
Time from onset to treatment (days)	9	10	9
Pneumonia (%)	100	100	100
Supplemental oxygen or NIRS (%)	39.6	83	15.1
Receiving mechanical ventilation (%)	25.6	0.3	Not reported
Underlying chronic diseases (%)	49.6% hypertension, 37% obesity, 29.7% diabetes	Hypertension: 72 (46%) vs 30 (38%); Diabetes: 40 (25%) vs 16 (21%); Coronary heart disease: 15 (9%) vs 2 (3%)	Cardiovascular disease: 56%, hypertension: 42%, Diabetes 40%, Asthma: 14%

Risk of bias in the included studies

We judge that the overall risk of bias was “high” for all outcomes regarding the ACTT-1 trial [24]. The study was judged to raise “some concerns” in deviations from the intended intervention domain and “high” in bias due to missing outcome data. CAP-China remdesivir 2 trial overall risk of bias was

“some concern” for all outcomes, because of problems in the randomization process [25]. SIMPLE 2 overall risk of bias was some concern for all outcomes due to deviations from intended interventions [26]. Table 4 summarises the risk of bias assessments and details of each assessment are presented in Appendix 2.

Table 4 summarises the risk of bias assessments and details of each assessment are presented in Appendix 2.

Table 4- Risk of bias in the included studies assessed by ROB-2 tool

	Risk of bias arising from the randomisation process	Risk of bias due to deviations from the intended intervention	Risk of bias due to missing outcome data	Risk of bias in the measurement of the outcome	Risk of bias in the selection of the reported result	Overall risk of bias
ACTT-1 [24]	Low	Some concerns	High	Low	Low	High
CAP-China remdesivir [25]	Some concerns	Low	Low	Low	Low	Some concerns
SIMPLE 2 [26]	Low	Some concerns	Low	Low	Low	Some concerns

Efficacy of remdesivir in the treatment of patients with COVID-19

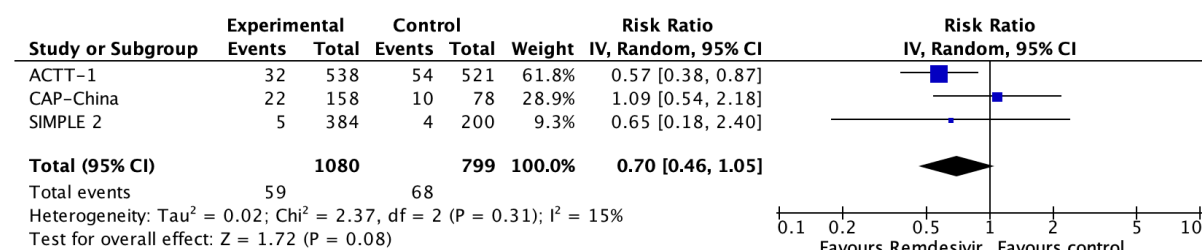
The main results are summarised in the Summary of Findings table, presented at the beginning of the manuscript.

Primary outcome

All-cause mortality.

All studies reported this outcome [24],[25],[26] and the evidence is very uncertain about the effect of remdesivir on mortality (RR 0.7, 95% CI 0.46 to 1.05; very low certainty evidence).

Figure 2 - Relative risk for all-cause mortality for remdesivir versus standard care (prepared by the authors from the study data).

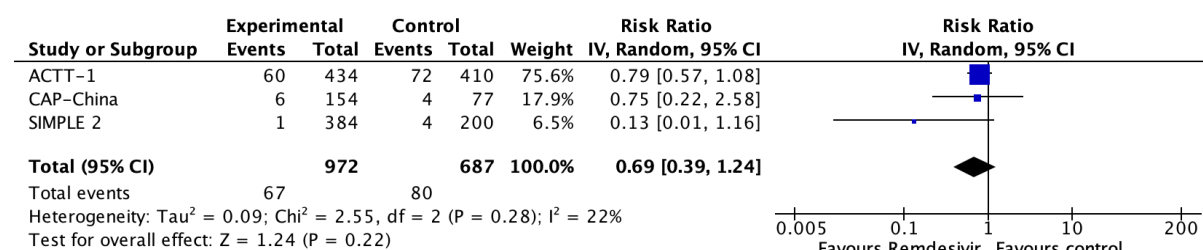


Secondary outcomes

Invasive mechanical ventilation

All studies reported this outcome [24],[25],[26] and the evidence is very uncertain about the effect of remdesivir on the need for invasive mechanical ventilation (RR 0.69, 95% CI 0.39 to 1.24; very low certainty evidence).

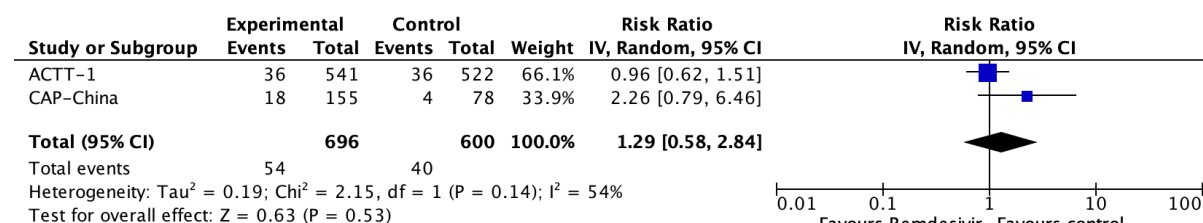
Figure 3 - Relative risk for invasive mechanical ventilation for remdesivir versus standard care (prepared by the authors from the study data).



Adverse effects leading to discontinuation

Two trials reported this outcome [24],[25] and remdesivir likely results in a large reduction in the incidence of adverse effects (RR 1.29, 95% CI 0.58 to 2.84; moderate certainty evidence).

Figure 4 - Relative risk for adverse effects leading to discontinuation for remdesivir versus standard care (prepared by the authors from the study data).



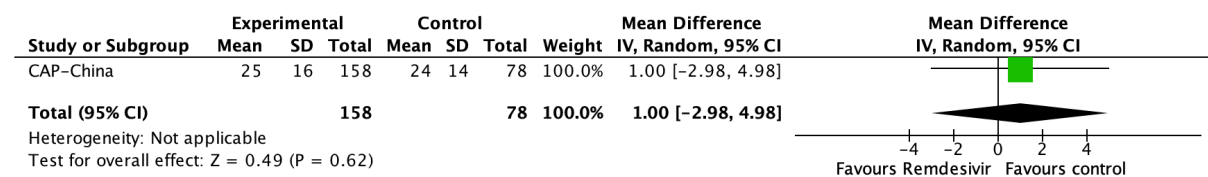
Time to viral clearance

This outcome was not measured or reported by the included studies

Length of hospital stay

Two studies reported this outcome [25],[26], but only one was usable for meta analysis [25]. SIMPLE 2 trial reported that there were no significant differences between the remdesivir and standard care groups in duration of hospitalisation [25]. Quantitative synthesis showed remdesivir may result in little to no difference in the duration of hospitalisation (MD 1, 95% CI -2.86 to 4.86; Low certainty evidence).

Figure 5 - Relative risk for length of hospital stay for remdesivir versus standard care (prepared by the authors from the study data).

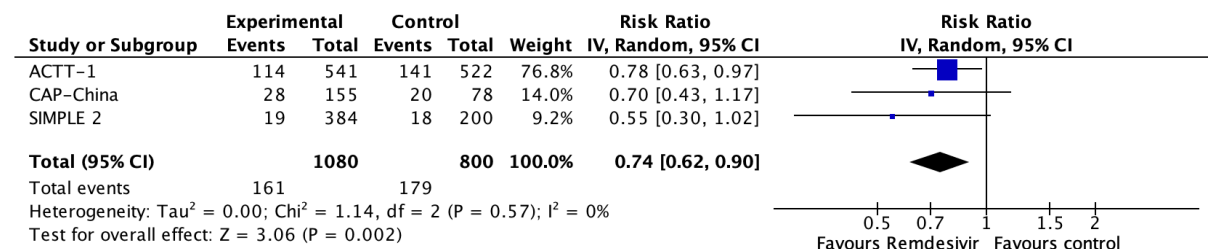


Other outcomes

Serious adverse effects

All studies reported this outcome [24],[25],[26] and remdesivir likely reduces the number of serious adverse effects (RR 0.74, 95% CI 0.62 to 0.9; moderate certainty evidence).

Figure 6 - Relative risk for serious adverse effects for remdesivir versus standard care (prepared by the authors from the study data).



Discussion

We conducted a systematic review and identified 3 randomised trials that reported data on the effect of remdesivir in patients with COVID-19 [24],[25],[26]. Even though remdesivir appears to be safe, the evidence is very uncertain about the impact on the outcomes critical for decision-making in moderate and severe patients, the more relevant clinical scenario for this drug, such as mortality and need of mechanical ventilation.

It is unfortunate not knowing yet if one of the pharmaceutical interventions that has sparked more interest is effective or not. One of the limitations comes from the lack of precision of the result for the main outcomes. The early termination of the ACTT-1 trial can be seen as a missed opportunity in this regard [25].

In addition, all the trials concluded enrollment before the release of the RECOVERY trial which showed a mortality reduction with dexamethasone [27]. It is not clear if this factor would modify the effect, if any, of remdesivir.

By now, clinicians and other decision makers are in a difficult position. The pressure to act is high, particularly after the the US Food and Drug Administration issued an emergency use authorisation of remdesivir for the treatment of COVID-19 [12]. We anticipate that the range of recommendations

from different organisations should range between a suggestion against its use and a weak recommendation for its use in severe cases, especially in settings without resource constraints.

There are at least 46 ongoing trials that we expect will provide data in the near future. Making sense of this information is not going to be an easy task. Systematic reviews are considered the gold standard to make sense of multiple trials addressing a similar scientific question, but the traditional model for conducting reviews has several limitations, including a high demand for time and resources [28] and a rapid obsolescence [29]. Amidst the COVID-19 crisis, researchers should make their best effort to answer the urgent needs of health decision makers yet without giving up scientific accuracy. Information is being produced at a vertiginous speed [30], so alternative models are needed.

One potential solution to these shortfalls are rapid reviews, a form of knowledge synthesis that streamlines or omits specific methods of a traditional systematic review in order to move faster. Unfortunately, in many cases, this rapidity comes at the cost of quality [31]. Furthermore, they do not solve the issue of obsolescence. Living systematic reviews do address that issue [32]. They are continually updated by incorporating relevant new evidence as it becomes available, at a substantial effort. So, an approach combining these two models might prove more successful in providing the scientific community and other interested parties with evidence that is actionable, rapidly and efficiently produced, up to date, and of the highest quality [33].

This review is part of a larger project set up to put such an approach into practice. The project aims to produce multiple parallel living systematic reviews relevant to COVID-19 following the higher standards of quality in evidence synthesis production [15]. We believe that our methods are well suited to handle the abundance of evidence that is to come, including evidence on the role of lopinavir/ritonavir for COVID-19.

During the COVID-19 pandemic, we will maintain the search and selection of evidence for this review continuously updated, and we will every time the conclusions change or whenever there are substantial updates. Our systematic review aims to provide high-quality, up-to-date synthesis of the evidence that is useful for clinicians and other decision-makers.

Notes

Acknowledgements

The members of the COVID-19 L-OVE Working Group and Epistemonikos Foundation have made possible to build the systems and compile the information needed by this project. Epistemonikos is a collaborative effort, based on the ongoing volunteer work of over a thousand contributors since 2012.

Roles and contributions

All the review authors drafted and revised the protocol, conducted article screening and data collection, and drafted and revised the review.

The COVID-19 L-OVE Working Group was created by Epistemonikos and a number of expert teams in order to provide decision makers with the best evidence related to COVID-19. Up-to-date information about the group and its member organisations is available here: epistemonikos.cl/working-group

Competing interests

All authors declare no financial relationships with any organisation that might have a real or perceived interest in this work. There are no other relationships or activities that might have influenced the submitted work.

Funding

This project was not commissioned by any organisation and did not receive external funding. Epistemonikos Foundation is providing training, support and tools at no cost for all the members of the COVID-19 L-OVE Working Group.

PROSPERO registration number

CRD42020183384

Ethics

As researchers will not access information that could lead to the identification of an individual participant, obtaining ethical approval was waived.

Data sharing

All data related to the project will be available. Epistemonikos Foundation will grant access to data.

References

1. World Health Organization. Director-General's remarks at the media briefing on 2019-nCoV on 11 February 2020. [Internet] World Health Organization; 2020 [Accessed 2020 April 12] Available from: <https://www.who.int/dg/speeches/detail/who-director-general-s-remarks-at-the-media-briefing-on-2019-ncov-on-11-february-2020>.
2. Hui DS, I Azhar E, Madani TA, et al. The continuing 2019-nCoV epidemic threat of novel coronaviruses to global health - The latest 2019 novel coronavirus outbreak in Wuhan, China. *Int J Infect Dis*. 2020 Feb;91:264-266. Available from: doi:10.1016/j.ijid.2020.01.009
3. Dong E, Du H, Gardner L. An interactive web-based dashboard to track COVID-19 in real time. *Lancet Infect Dis*. 2020 Feb 19
4. Guan WJ, Ni ZY, Hu Y, et al. Clinical Characteristics of Coronavirus Disease 2019 in China. *N Engl J Med* 2020. Available from: doi:10.1056/NEJMoa2002032
5. Tavakoli A, Vahdat K, Keshavarz M. Novel Coronavirus Disease 2019 (COVID-19): An Emerging Infectious Disease in the 21st Century. *BPUMS*. 2020;22(6):432-450. Available from: doi:10.29252/ismj.22.6.432
6. Li LQ, Huang T, Wang YQ, Wang ZP, Liang Y, Huang TB, et al. 2019 novel coronavirus patients' clinical characteristics, discharge rate and fatality rate of meta-analysis. *Journal of medical virology*. 2020. Available from: doi:10.1002/jmv.25757
7. Global Covid-19 Case Fatality Rates [Internet] UK: Centre for Evidence-Based Medicine [Accessed 2020 April 12]. Available from: <https://www.cebm.net/covid-19/global-covid-19-case-fatality-rates/>
8. Rodriguez-Morales AJ, Cardona-Ospina JA, Gutiérrez-Ocampo E, et al. Clinical, laboratory and imaging features of COVID-19: A systematic review and meta-analysis. *Travel medicine and infectious disease*. 2020;101623. Available from: doi:10.1016/j.tmaid.2020.101623
9. Siegel D, Hui HC, Doerffler E, Clarke MO, Chun K, Zhang L, Neville S, Carra E, Lew W, Ross B, Wang Q, Wolfe L, Jordan R, Soloveva V, Knox J, Perry J, Perron M, Stray KM, Barauskas O, Feng JY, Xu Y, Lee G, Rheingold AL, Ray AS, Bannister R, Strickley R, Swaminathan S, Lee WA, Bavari S, Cihlar T, Lo MK, Warren TK, Mackman RL. Discovery and Synthesis of a Phosphoramidate Prodrug of a Pyrrolo[2,1-f][triazin-4-amino] Adenine C-Nucleoside (GS-5734) for the Treatment of Ebola and Emerging Viruses. *Journal of medicinal chemistry*. 2017;60(5):1648-1661
10. Sheahan TP, Sims AC, Graham RL, Menachery VD, Gralinski LE, Case JB, Leist SR, Pirc K, Feng JY, Trantcheva I, Bannister R, Park Y, Babusis D, Clarke MO, Mackman RL, Spahn JE, Palmiotti CA, Siegel D, Ray AS, Cihlar T, Jordan R, Denison MR, Baric RS. Broad-spectrum antiviral GS-

- 5734 inhibits both epidemic and zoonotic coronaviruses. *Science translational medicine*. 2017;9(396).
11. Brandi Williamson, Friederike Feldmann, Benjamin Schwarz, Kimberly Meade-White, Danielle Porter, Jonathan Schulz, Neeltje van Doremalen, Ian Leighton, Claude Kwe Yinda, Lizzette Perez-Perez, Atsushi Okumura, Jamie Lovaglio, Patrick Hanley, Greg Saturday, Catharine Bosio, Sarah Anzick, Kent Barbian, Tomas Chilar, Craig Martens, Dana Scott, Vincent Munster, Emmie de Wit. Clinical benefit of remdesivir in rhesus macaques infected with SARS-CoV-2. *bioRxiv*. 2020
12. U.S. Food and Drug Administration. Coronavirus (COVID-19) Update: FDA Issues Emergency Use Authorization for Potential COVID-19 Treatment. FDA NEWS RELEASE. 2020;
13. Herper M. Inside the NIH's controversial decision to stop its big remdesivir study. *STAT*. 2020
14. Moher D, Liberati A, Tetzlaff J, Altman DG; PRISMA Group. Preferred reporting items for systematic reviews and meta-analyses: the PRISMA statement. *J Clin Epidemiol*. 2009;62(10):1006–1012. doi:10.1016/j.jclinepi.2009.06.005
15. Rada G, Verdugo-Paiva F, Ávila C, Morel-Marambio M, Bravo-Jeria R, Pesce F, et al; COVID-19 L-OVE Working Group. Evidence synthesis relevant to COVID-19: a protocol for multiple systematic reviews and overviews of systematic reviews. *Medwave* 2020;20(3):e7867. Available from: doi:10.5867/medwave.2020.03.7867
16. Verdugo F, Acuña MP, Solà I, Rada G. Remdesivir for the treatment of COVID-19: A living systematic review protocol. *OSF* 2020. Available from: doi:10.31219/osf.io/zwqf2
17. Github repository [Internet] [Accessed 2020 April 3 Available from: <https://github.com/dperezrada/keywords2vec>
18. Methods for the special L-OVE of Coronavirus infection [Internet] Santiago: Epistemonikos Foundation [Accessed 2020 April 3]. Available from: <https://app.iloveevidence.com/covid-19>
19. Sterne JAC, Savović J, Page MJ, Elbers RG, Blencowe NS, Boutron I, et al. RoB 2: a revised tool for assessing risk of bias in randomised trials. *BMJ*. 2019 Aug 28;366:l4898. Available from: doi:10.1136/bmj.l4898
20. Review Manager (RevMan) [Software]. Version 5.3.5 Copenhagen: The Nordic Cochrane Centre, The Cochrane Collaboration, 2014.
21. Guyatt GH, Oxman AD, Vist GE, Kunz R, Falck-Ytter Y, Alonso-Coello P, et al; GRADE Working Group. GRADE: an emerging consensus on rating quality of evidence and strength of recommendations. *BMJ*. 2008 Apr 26;336(7650):924-6. Available from: doi:10.1136/bmj.39489.470347.AD Available from: doi:10.1016/j.jclinepi.2012.01.012

22. Guyatt GH, Oxman AD, Santesso N, et al. GRADE guidelines: 12. Preparing summary of findings tables-binary outcomes. J Clin Epidemiol [Internet] 2013 Feb [Accessed March 26] ;66(2):158-72. Available from: doi:10.1016/j.jclinepi.2012.01.012
23. Guyatt GH, Thorlund K, Oxman AD, et al. GRADE guidelines: 13. Preparing summary of findings tables and evidence profiles-continuous outcomes. J Clin Epidemiol 2013 Feb;66(2):173-83. Available from: doi:10.1016/j.jclinepi.2012.08.001
24. Beigel JH, Tomashek KM, Dodd LE, Mehta AK, Zingman BS, Kalil AC, Hohmann E, Chu HY, Luetkemeyer A, Kline S, Lopez de Castilla D, Finberg RW, Dierberg K, Tapson V, Hsieh L, Patterson TF, Paredes R, Sweeney DA, Short WR, Touloumi G, Lye DC, Ohmagari N, Oh MD, Ruiz-Palacios GM, Benfield T, Fätkenheuer G, Kortepeter MG, Atmar RL, Creech CB, Lundgren J, Babiker AG, Pett S, Neaton JD, Burgess TH, Bonnett T, Green M, Makowski M, Osinusi A, Nayak S, Lane HC, ACTT-1 Study Group Members. Remdesivir for the Treatment of Covid-19 - Preliminary Report. The New England journal of medicine. 2020
25. Wang, Yeming, Zhang, Dingyu, Du, Guanhua, Du, Ronghui, Zhao, Jianping, Jin, Yang, Fu, Shouzhi, Gao, Ling, Cheng, Zhenshun, Lu, Qiaofa, Hu, Yi, Luo, Guangwei, Wang, Ke, Lu, Yang, Li, Huadong, Wang, Shuzhen, Ruan, Shunan, Yang, Chengqing, Mei, Chunlin, Wang, Yi, Ding, Dan, Wu, Feng, Tang, Xin, Ye, Xianzhi, Ye, Yingchun, Liu, Bing, Yang, Jie, Yin, Wen, Wang, Aili, Fan, Guohui, Zhou, Fei, Liu, Zhibo, Gu, Xiaoying, Xu, Jiuyang, Shang, Lianhan, Zhang, Yi, Cao, Lianjun, Guo, Tingting, Wan, Yan, Qin, Hong, Jiang, Yushen, Jaki, Thomas, Hayden, Frederick G, Horby, Peter W, Cao, Bin, Wang, Chen. Remdesivir in adults with severe COVID-19: a randomised, double-blind, placebo-controlled, multicentre trial. The Lancet. 2020;395(10236):1569-1578.
26. Spinner CD, Gottlieb RL, Criner GJ, Arribas López JR, Cattelan AM, Soriano Viladomiu A, Ogbuagu O, Malhotra P, Mullane KM, Castagna A, Chai LYA, Roestenberg M, Tsang OTY, Bernasconi E, Le Turnier P, Chang SC, SenGupta D, Hyland RH, Osinusi AO, Cao H, Blair C, Wang H, Gaggar A, Brainard DM, McPhail MJ, Bhagani S, Ahn MY, Sanyal AJ, Huhn G, Marty FM, GS-US-540-5774 Investigators. Effect of Remdesivir vs Standard Care on Clinical Status at 11 Days in Patients With Moderate COVID-19: A Randomized Clinical Trial. JAMA. 2020;
27. Peter Horby, Wei Shen Lim, Jonathan Emberson, Marion Mafham, Jennifer Bell, Louise Linsell, Natalie Staplin, Christopher Brightling, Andrew Ustianowski, Einas Elmahi, Benjamin Prudon, Christopher Green, Timothy Felton, David Chadwick, Kanchan Rege, Christopher Fegan, Lucy C Chappell, Saul N Faust, Thomas Jaki, Katie Jeffery, Alan Montgomery, Kathryn Rowan, Edmund Juszczak, J Kenneth Baillie, Richard Haynes, Martin J Landray, - RECOVERY

- Collaborative Group. Effect of Dexamethasone in Hospitalized Patients with COVID-19: Preliminary Report. medRxiv. 2020;
28. Borah R, Brown AW, Capers PL, Kaiser KA. Analysis of the time and workers needed to conduct systematic reviews of medical interventions using data from the PROSPERO registry. BMJ Open. 2017 Feb 27;7(2):e012545. Available from: doi:10.1136/bmjopen-2016-012545
29. Shojania KG, Sampson M, Ansari MT, Ji J, Doucette S, Moher D. How quickly do systematic reviews go out of date? A survival analysis. Ann Intern Med. 2007 Aug 21;147(4):224-33. Available from: doi:10.7326/0003-4819-147-4-200708210-00179
30. Coronavirus and the risks of 'speed science' [Internet] Reuters; 2020 [Accessed 2020 April 12] Available from: <https://www.weforum.org/agenda/2020/03/speed-science-coronavirus-covid19-research-academic>
31. Kelly SE, Moher D, Clifford TJ. Quality of conduct and reporting in rapid reviews: an exploration of compliance with PRISMA and AMSTAR guidelines. Syst Rev. 2016 May 10;5:79. Available from: doi:10.1186/s13643-016-0258-9
32. Elliott JH, Synnot A, Turner T, Simmonds M, Akl EA, McDonald S, et al.; Living Systematic Review Network. Living systematic review: 1. Introduction-the why, what, when, and how. J Clin Epidemiol. 2017 Nov;91:23-30. Available from: doi:10.1016/j.jclinepi.2017.08.01
33. Akl EA, Haddaway NR, Rada G, Lotfi T. Evidence synthesis 2.0: when systematic, scoping, rapid, living, and overviews of reviews come together. J Clin Epidemiol. 2020 Mar 4. pii: S0895-4356(19)30986-2. Available from: doi:10.1016/j.jclinepi.2020.01.025