

1 Title [216/250 characters]

2 **“Kankasha” in Kassala: a prospective observational cohort study of the clinical characteristics,**
3 **epidemiology, genetic origin, and chronic impact of the 2018 epidemic of Chikungunya virus**
4 **infection in Kassala, Sudan**

5 Short title: [66/70characters]

6 **Understanding the 2018 Chikungunya virus epidemic in Eastern Sudan**

7

8 **Authors:** Hilary Bower^{1*}, Mubarak el Karsany^{2,3*}, Abd Alhadi Adam Hussein⁴, Mubarak Ibrahim
9 Idriss⁵, Ma’aaza Abasher AlZain⁶, Mohamed Elamin Ahmed Alfakiyousif², Rehab Mohamed², Iman
10 Mahmoud², Omer Albadri,⁷ Suha Abdulaziz Alnour Mahmoud¹⁰, Orwa Ibrahim Abdalla¹⁰, Mawahib
11 Eldigail², Nuha Elagib², Ulrike Arnold¹, Bernardo Gutierrez⁸, Oliver G. Pybus⁸, Daniel P. Carter⁹, Steven
12 T. Pullan⁹, Shevin T. Jacob¹¹, Tajeldin Mohammedein Abdallah^{4,10#}, Benedict Gannon^{1#}, Tom E.
13 Fletcher^{11#}

14 * Equal first authors, # Equal senior authors

15

16 **Authors’ affiliations**

17 1. UK Public Health Rapid Support Team, London School of Hygiene & Tropical Medicine/Public Health
18 England, London, United Kingdom

19 2. National Public Health Laboratory, Federal Ministry of Health, Khartoum, Sudan

20 3. Karary University, Omdurman, Sudan

21 4. University of Kassala, Kassala, Sudan

22 5. Laboratory Division, Kassala State Ministry of Health, Kassala, Sudan

23 6. Communicable Disease Surveillance & Events Unit, Federal Ministry of Health, Khartoum, Sudan

24 7. Health Emergency and Epidemic Control Directorate, Federal Ministry of Health, Khartoum, Sudan

25 8. Department of Zoology, University of Oxford, Oxford, United Kingdom

26 9. National Infection Service, Public Health England, Porton, United Kingdom

27 10. Kassala Teaching Hospital, Kassala, Sudan

28 **NOTE: This preprint reports new research that has not been certified by peer review and should not be used to guide clinical practice.**
11. Clinical Sciences, Liverpool School of Tropical Medicine, Liverpool, United Kingdom

29 **Authors' contributions**

30 Conceptualisation : TEF, HB, MEK, OGP, BGa, STP

31 Data curation : IM, AAAH, HB, BGa

32 Formal analysis : HB, BGu, OGP, TEF

33 Funding acquisition: HB

34 Investigation: MEK, MAZ, MEAA, AAAH, MII, OA, SAAM, OIA, RM, MED, UA, BGu, OGP, DPC, STP, TMA,
35 BGa TEF

36 Methodology: HB, MEK, BGa, TEF,

37 Project administration: HB, MEK, TMA, TEF

38 Resources : HB, MEK, TEF, AAAH, NEA, BGu, OGP, BGa

39 Software : DPC, BGu

40 Supervision : HB, MEK, TMA, BGa, TEF

41 Validation : not applicable

42 Writing – original draft preparation: HB, TEF

43 Writing – review & editing: HB, MEK, AAAH, MII, MAZ, MEAA, RM, IM, OA, SAAM, OIA, MED, NEA, UA,
44 BGu, OGP, DPC, STP, STJ, TMA, BGa, TEF

45

46 **Role of the funding source**

47 The study was funded by UK aid from the Department of Health and Social Care

48 (<https://www.gov.uk/government/collections/official-development-assistance-oda--2>, Grant No. IS-

49 RRT-1015-001) via the UK Public Health Rapid Support Team Research Programme (Grant No.

50 RST3_03). The funder had no role in study design, data collection and analysis, decision to publish or
51 preparation of the manuscript.

52

53 **Competing interests**

54 All authors declare no competing interests

55

56

57

58

59 **Abstract** [300w]

60 **Background**

61 The public health impact of Chikungunya virus (CHIKV) is often underestimated. Usually considered a
62 mild condition of short duration, recent outbreaks have reported greater incidence of severe illness,
63 fatality, and longer-term disability. In 2018/19, Eastern Sudan experienced the largest epidemic of
64 CHIKV in Africa to date, affecting an estimated 487,600 people. Known locally as Kankasha, this study
65 examines the clinical characteristics, risk factors, and phylogenetics of the CHIKV epidemic in Kassala
66 City.

67 **Methodology/Principal Findings**

68 A prospective cohort of 142 cases (102 adults, 40 children) were enrolled at Kassala Teaching Hospital
69 in October 2018. Clinical information, socio-demographic data and sera samples were analysed to
70 confirm diagnosis, characterise illness, and identify the viral strain. CHIKV infection was confirmed by
71 real-time reverse transcription-PCR in 84.5% (120/142) of participants. Nine had concurrent
72 CHIKV/Dengue virus (DENV) infection and 28.8% had a positive Rapid Diagnostic Test for malaria. Five
73 percent had haemorrhagic symptoms including two children with life-threatening haemorrhage. One
74 CHIKV-positive participant died with acute renal injury.

75 Ninety to 120 days post-illness, 63% of those followed-up were still experiencing arthralgia in one or
76 more joints, and 11% remained moderately disabled using Rapid3 assessment. Phylogenetic analysis
77 showed all CHIKV infections belonged to a single clade within the Indian Ocean Lineage (IOL) of the
78 East/Central/South African (ECSA) genotype. History of contact with an infected person was the only
79 socio-demographic factor associated with infection ($p=0.01$), suggesting that vector transmission in
80 households is important.

81 **Conclusions/Significance**

82 The epidemic is estimated to have affected ~ 50% of Kassala City's population. Substantial vulnerability
83 to CHIKV remains here and elsewhere in Sudan due to widespread *Aedes aegypti* presence and
84 mosquito-fostering household water storage methods. This study highlights the importance of
85 increasing awareness of the severity and socio-economic impact of CHIKV outbreaks and the need for
86 urgent actions to reduce transmission risk in households.

87 **Keywords:** Chikungunya, disability, epidemiology, outbreak, Kassala, Sudan

88

89 **Author summary [200w]**

90 Chikungunya is an arboviral disease transmitted to humans by infected mosquitoes and characterised
91 by fever and arthralgia. Although it is generally considered a short self-limiting infection, long term
92 sequelae and severe disease are increasingly recognised. In 2018/19, Eastern Sudan experienced the
93 largest epidemic of Chikungunya in Africa to date, affecting approximately 500,000 people. We
94 undertook a prospective hospital-based cohort study of patients presenting with undifferentiated
95 febrile illness in Kassala city, Sudan, supported by next-generation sequencing. We confirmed that
96 CHIKV was the dominant pathogen, with positive CHIKV RT-PCR in 85% of patients presenting during
97 the 7-day study period. Dengue virus was also circulating with nine CHIKV PCR-positive patients co-
98 infected, and we identified high rates of *Plasmodium falciparum* malaria infection and CHIKV/malaria
99 co-infection. Genetic sequencing confirmed Indian Ocean Lineage of the East/Central/South African
100 CHIKV genotype. A substantial proportion of participants were admitted to hospital including children
101 with haemorrhage, reflecting the severe phenotype linked to this genotype. Increased understanding
102 of the health and economic burden of Chikungunya is needed, and recognition that severe and
103 occasionally fatal infection exists. With widespread presence of *Ae. aegypti* and household water
104 storage practices that encourage mosquito breeding, timely actions will be essential to prevent further
105 large outbreaks.

106 **MAIN TEXT: 3876 words**

107 **INTRODUCTION**

108 Chikungunya is often considered a mild illness and its public health impact underestimated in Africa
109 and the Middle East despite the fact that greater severity and long-term sequelae have been reported
110 increasingly in recent years.¹⁻³

111 First isolated in Tanzania in 1952,⁴ Chikungunya virus (CHIKV) was implicated in rural outbreaks and
112 sporadic cases across Africa until 1980, when it effectively disappeared. In 2004, however, it
113 reappeared with a vengeance in a pandemic that spread from Kenya to the Indian Ocean islands and
114 Asia, causing millions of infections.^{5, 6} In central Africa, sizeable CHIKV outbreaks in cities signalled a
115 major shift in transmission to urban settings.^{2, 3, 7-9}

116 Early symptoms of CHIKV are similar to many tropical febrile illnesses but it is differentiated by
117 debilitating arthralgia, often bilaterally and in multiple joints. Other symptoms include headache,
118 gastrointestinal problems, fatigue, asthenia, peripheral oedema and conjunctivitis.¹⁰ Although most
119 cases improve after 1-2 weeks, recent outbreaks have seen higher incidences of severe illness,
120 including sepsis and cardiac, renal, neurological, skin and ocular manifestations, and of longer-term
121 effects including persistent pain, rheumatic symptoms, depression, and mood and sleep disorders.¹¹⁻

122 ¹⁶ A meta-analysis of chronic symptoms studies in 15 outbreak countries found 43% of cases had not
123 recovered at three months, and 21% unrecovered at 12 months. Long term neurodevelopmental
124 delays have been reported in infants symptomatically infected through vertical transmission.^{17, 18}
125 Apart from anti-inflammatory drugs, there is no treatment for Chikungunya and, as yet, no vaccine.¹⁹

126 Recent outbreaks have also challenged the view that CHIKV fatality is rare. Mortality of 10-48% were
127 reported in the Reunion Island outbreak among cohorts of hospitalised patients.^{13, 16} Central nervous
128 system Infections with fatal outcomes have been reported in the Americas.²⁰ Other locations have
129 documented substantial rises in all-cause deaths during outbreak periods.²⁰

130 Hypotheses to explain these changes include persistent immune activation triggered by viral debris,
131 improved surveillance and genetic mutation, particularly a new variant known as the Indian Ocean
132 Lineage (IOL) which, since the 2004-2006 pandemic, has been linked to greater severity and the
133 highest rates of non-recovery.²¹ IOL has also been linked to increased risk of outbreak as some forms
134 contain a mutation that allows CHIKV to use the temperate-dwelling *Aedes albopictus* mosquito as a
135 vector as well the tropical *Aedes aegypti*.^{5, 21}

136 In low-resource settings, outbreaks of undifferentiated febrile illness (UFI) are both common and a
137 diagnostic challenge. The Federal Republic of Sudan has seen 12 major outbreaks of UFI since 2012,
138 frequently associated with haemorrhage and high case fatality ratios²² and a range of high-

139 consequence infectious diseases are endemic or epidemic in Sudan. Crimean-Congo haemorrhagic
140 fever was recently identified as a common pathogen in a retrospective investigation of outbreaks in
141 Darfur.²³ Yellow fever virus epidemics occur²⁴ and outbreaks of dengue fever are common.²⁵ The
142 Federal Ministry of Health (FMOH) maintains a sentinel surveillance system and supports individual
143 states with rapid response teams and enhanced diagnostic capability at the National Public Health
144 Laboratory (NPHL) in Khartoum.

145 In late July 2018, the sentinel surveillance in Kassala State (Figure 1) detected an increased frequency
146 of UFI and CHIKV was identified by the NPHL in the blood sample of a traveller to Kassala city from
147 nearby Red Sea State. In mid-September reports of cases with more severe symptoms, including
148 haemorrhage, raised fears that another pathogen might be involved. Using a pre-prepared, locally and
149 internationally-approved protocol, FMOH and Kassala Teaching Hospital (KTH), supported by Kassala
150 University and the UK Public Health Rapid Support Team, deployed a small pre-trained study team of
151 clinical, epidemiology and laboratory staff to investigate the outbreak syndrome, confirm the
152 outbreak pathogen, and sequence the outbreak strain.

153 **Figure 1: Study location**



Legend: Kassala state, located in Eastern Sudan, 600 km the capital city, Khartoum. covers an area of 42,282 km² and has a population 1.8 million inhabitants. Kassala City is the State capital with a population of ~ 400,000. Kassala Teaching Hospital is the State tertiary hospital and provides service for all patients referred from health centres and rural hospitals.

170 **METHODS**

171 The study was a prospective hospital-based observational cohort of consecutive patients presenting
172 with UFI (case definition, Figure 2) at the KTH medical and paediatrics outpatient clinics departments
173 between 10th and 16th October 2018. Epidemiological information, clinical symptoms and laboratory
174 results were recorded at presentation on standardised pro-formas (Supporting Information 1). The
175 sample size of 140 cases was informed by existing literature³ and feasible recruitment in the urgent
176 time frame (7 days).

177 Blood samples were drawn at initial assessment, and adults who responded to phone follow-up
178 provided convalescent samples and completed the WHO-validated Routine Assessment of Patient
179 Index Data 3 (RAPID3) disability and pain survey²⁶ 90-120 days later (Jan-Feb 2019). Children were not
180 asked to return due to common reluctance to allow blood-draw from healthy children, but outcome
181 and duration of hospital stay were confirmed with parents. All contactable participants were given
182 their PCR test results.

183 **Figure 2: Case definition used in Kassala Teaching Hospital**

Individuals of any age or sex who come to the health facility with history of fever or a measured fever of $>37.5^{\circ}\text{C}$ (tympanic),

AND At least three of the following clinical features:

Headache	Anorexia
Lethargy	Aching muscles or joints
Breathing difficulties	Vomiting
Diarrhoea	Stomach pain
Difficulty swallowing	Hiccups

OR: Bleeding of any kind

Patients with a positive malaria RDT should be enrolled if they fit the study syndrome as

184
185 Haematology (Mindaray 3000 Plus, China), biochemistry analysis (Biosystem BTS 310, Germany), and
186 malaria rapid diagnostic tests (RDT, SD Bionline, USA) were performed at admission on all participants:
187 malaria thick film examination was done for all children. Plasma samples were frozen at -80°C and
188 transported under liquid nitrogen to the NPHL in Khartoum where nucleic acid was extracted (QIAamp
189 Viral RNA Mini kit, Qiagen, Germany) and qRT-PCR performed to detect CHIKV RNA (RealStar
190 Chikungunya RT-PCR Kit 2.0, Altona Diagnostics, Germany) using Rotor Gene Q or Corbett RG6000
191 thermocyclers. Exposure to CHIKV and DENV was assayed by anti-chikungunya and anti-dengue IgM
192 and IgG indirect ELISA (Euroimmun, Germany). Due to limited availability of anti-chikungunya IgM
193 ELISA kits, CHIKV PCR-negative samples were prioritised, followed by 69 CHIKV PCR-positives in order

194 of recruitment. An Ebolavirus qRT-PCR (RealStar Ebolavirus RT-PCR Kit 1.0, Altona Diagnostics,
195 Germany) was performed on samples from patients with bleeding symptoms.

196 All patient data were entered into encrypted software and analysed with STATA (StataCorp LLC, USA,
197 V14.2). Descriptive statistics are expressed as medians and Inter-Quartile Range (IQR) or means and
198 standard deviations (SD) for continuous variables, and frequencies and proportions for categorical
199 variables. Fisher's exact, Chi², T-tests and Spearman's Rank Order coefficients were used to assess
200 association and correlation related to CHIKV PCR result. Significance was set at p<0.05.

201 Ethical approval was granted by the FMOH Technical Review Board, and Ethics Committee of Karary
202 University, Khartoum and the London School of Hygiene & Tropical Medicine (Ref: 11930). All
203 participants or parents/guardians of children aged under 18 years provided written informed consent.

204 **Genetic sequencing**

205 Complementary DNA (cDNA) was prepared and Sequence Independent Single Primer Amplification
206 (SISPA) performed prior to library preparation using Oxford Nanopore kits (SQK-LSK108). Sequencing
207 on flow cells (FLO-MIN106) was done using the MinION (Oxford Nanopore Technologies) as previously
208 described.²⁷ Thirty samples were sequenced at NPHL and analysed using Albacore 1.2 to basecall,
209 Mash Screen²⁸ was used to identify the most closely matched genome on Genbank and a reference
210 guided genome assembly constructed as described previously.²⁷ The first seven sequences were used
211 to construct a basic phylogenetic analysis using MEGA version 6 (results not shown) in order to identify
212 the Kassala strain in Sudan. With FMOH permission, sample aliquots were also transferred to PHE
213 Porton and sequenced using the same methods. The resulting viral genetic sequences were sent to
214 Oxford University Department of Zoology for phylogenetic analysis.

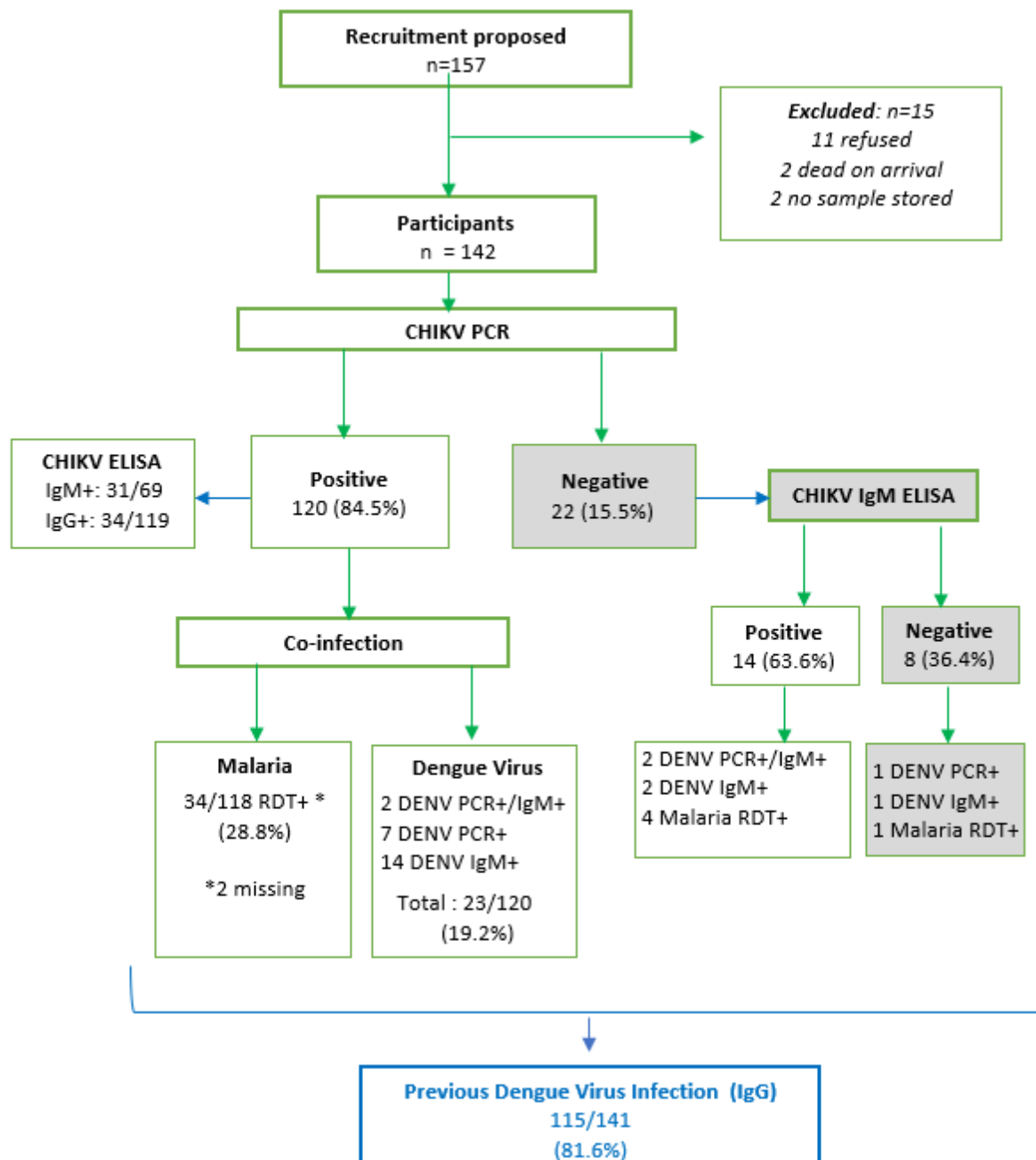
215 Whole genome sequences were aligned with publicly available complete CHIKV genomes belonging
216 to the ECSA genotype using MAFFT v7.450 implemented in Geneious R8.²⁹ A maximum likelihood (ML)
217 phylogenetic tree was estimated using RAxML 8.0³⁰ under a GTR substitution model with a Gamma
218 model of among-site rate heterogeneity. The estimated ML phylogeny was midpoint rooted, and node
219 support was assessed through 100 ML bootstrap replicates. The geographic location and amino acid
220 identity at site E1-226 of each sequence were annotated in the tree to explore the phylogenetic
221 distribution of those traits.

222

223 **RESULTS**

224 A total of 102 adults and 42 children (<18 years) were recruited over seven days, of which two cases
225 without samples were excluded. 11 patients or their guardians refused to participate, and 2 patients
226 dead on arrival were not included as sampling was not possible (Figure 3).

227 **Figure 3: Flow diagram of study participants and virological findings**



228

229 Participants were aged 4 months to 70 years (mean 27 years, SD 17.6); 47.9% were female, none were
 230 pregnant (Table 1). Almost half (46.1%, 65/141) were people likely to spend more time in a household
 231 compound (e.g. housewives, unemployed, retired, children under 5). Median household size was 8.
 232 Two-thirds of participants lived in brick/concrete houses with own well and sanitation, the remainder
 233 lived in less permanent material structures with shared water and sanitation. A third kept animals in
 234 their compound.

235

236 **Table 1: Participant characteristics by Chikungunya qRT-PCR result**

	total	CHKV pos (n=120)	%	CHKV neg (n=22)	%
Sex					
Female	47.9%	56	82.3	12	17.7
Male	52.1%	64	86.5	10	13.5
Age (y), median [IQR]		22	14-40	37	21-54
Age Group (y) (n=141)					
<2	7	7	5.9	0	0.0
2-4	6	5	4.2	1	4.5
5-14	24	22	18.5	2	9.1
15-29	51	46	38.7	5	22.7
30-49	33	26	21.8	7	31.8
50+	20	13	10.9	7	31.8
Occupation (n=141)					
< 5 child	13	12	10.0	1	4.8
Schoolchild/student	49	43	35.8	6	28.6
Housewife	31	26	21.7	5	23.8
Farmer/Outdoor worker	15	12	10.0	3	14.3
Professional/Business	7	7	5.8	0	0.0
Health worker	5	3	2.5	2	9.5
Retired/unemployed	21	17	14.2	4	19.0
Median household size (IQR) n=102	8	8	6-11	7	5-9
<i>Missing data: age 1, occupation 1, # in household 40</i>					

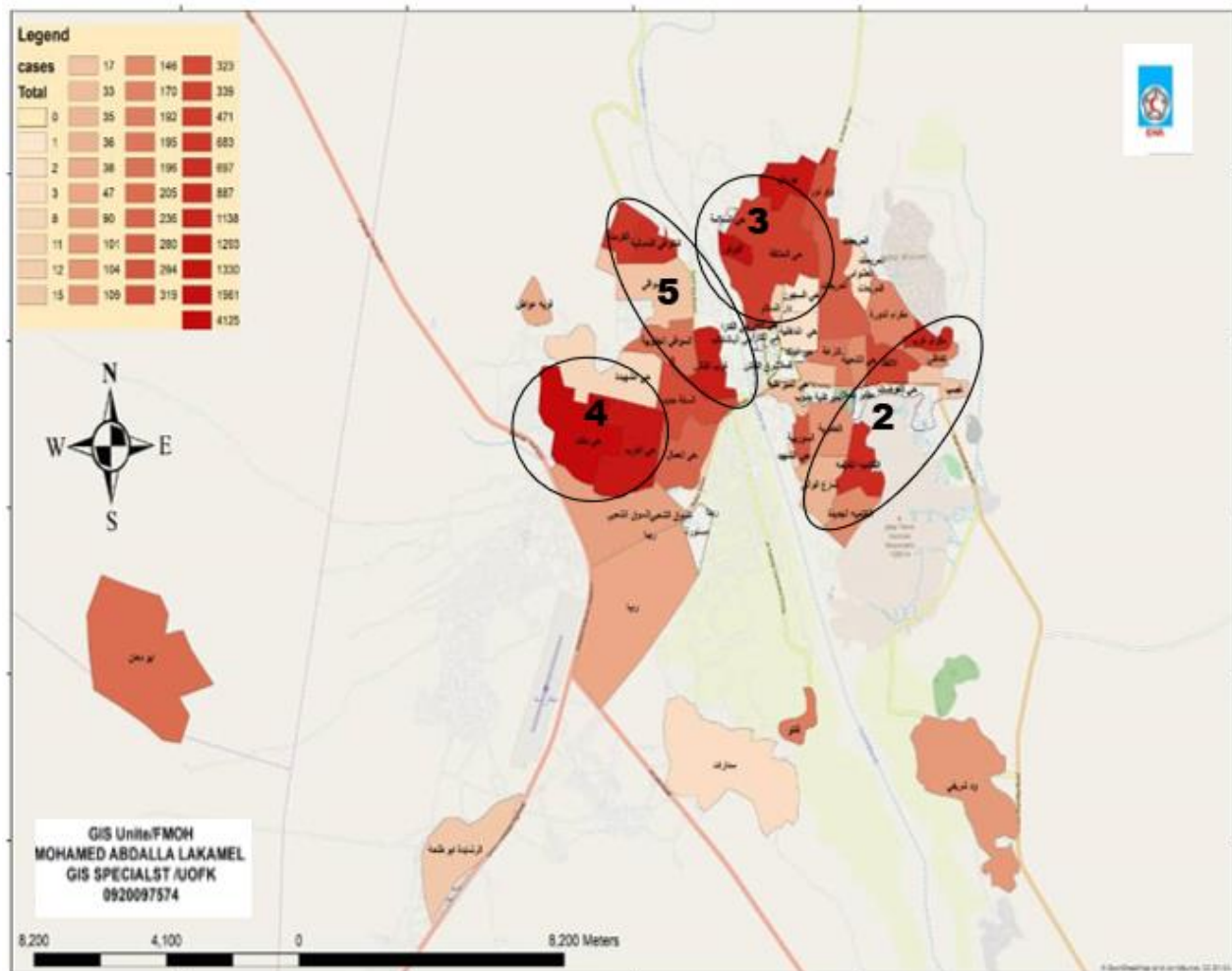
237

238

239 Most participants came from Kassala City sectors 2,3, 4 and 5 on the banks of the seasonal River Gash
 240 (69%, 80/116), coinciding with areas of greatest flooding in the 2018 rainy season, and with highest
 241 case reports during the epidemic (Figure 4). A further 26% (30/116) were from rural areas up to 1.5
 242 hours' drive away.

243

244 **Figure 4: Distribution of all reported Chikungunya cases in Kassala City and surrounds, Aug – Nov**
 245 **2018 (n=19,902)**
 246



262 (1), haemoptysis (1) and melaena (1). Ten percent of CHIKV PCR-positive adults (18/78) were
263 hypotensive (systolic blood pressure <100 mmHg) with seven also being tachycardic (pulse >100).

264

265 **Table 2: Clinical symptoms and Ct values of participants at presentation by CHIKV qRT-PCR result**
266 **(n=142)**

	CHIKV pos	%	CHIKV neg	%
Days from onset to presentation	2	<i>IQR 1-4</i>	2	<i>IQR 1-5</i>
Symptoms at presentation				
Fever/history of fever	117	97.5	22	100.0
Any bleeding	6	5.0	1	4.8
Headache	97	80.8	17	85.0
Joint pain	93	77.5	15	75.0
Fatigue	85	70.8	17	81.0
Muscle pain	66	55.0	16	76.2
Back pain	55	45.8	9	42.9
Loss of appetite	46	38.3	6	28.6
Vomiting	45	37.5	8	38.1
Abdominal pain	32	26.7	8	38.1
Lack of strength	25	20.8	4	100.0
Dizziness	18	15.0	3	14.3
Chest pain	17	14.2	3	15.0
Cough	17	14.2	2	9.5
Rash	13	10.8	2	9.5
Diarrhoea	11	9.2	2	10.0
Dysphagia	9	7.5	3	15.0
Dehydration	9	7.5	1	33.3
Shortness of breath	7	5.8	2	10.0
Conjunctivitis	7	5.8	3	15.0
Sore throat	6	5.0	0	0.0
Confusion	3	2.5	0	0.0
PCR Cycle Threshold				
High (Ct <20)	33	27.5	-	
Moderate (Ct 20-29)	24	20.0	-	
Low (Ct 30-38)	63	52.5	-	
Other pathology				
Malaria positive (RDT)	34/118	28.8	5/22	22.7
DENV positive (PCR)	9/120	7.5	3/22	13.6
*Missing: onset date 3; malaria RDT 2;				

267

268 **Laboratory results**

269 Of 142 participants, 120 were confirmed positive for CHIKV infection by qRT-PCR, giving the case
270 definition used a positive predictive value of 84.5%. CHIKV PCR cycle threshold (Ct) values ranged from
271 12-37 (mean 27.3, SD 7.6); over a quarter (27.5%) had a Ct value corresponding with a high viral load
272 (Ct<20) (Table 2). A significant correlation existed between Ct value and both day of illness (Spearman
273 $r=0.37$, $p<0.001$) and lymphocyte count ($r=0.23$, $p=0.012$); no other significant correlations were
274 found. Prolonged viremia was observed in seven CHIKV PCR-positive who presented 10 days after

275 disease onset. Of 91 participants tested for CHIKV IgM antibodies, 45 were positive including 14
276 participants who were negative on CHIKV PCR (Figure 3).

277 Nineteen percent of CHIKV PCR-positive participants (23/120) were coinfecting with DENV either by
278 PCR or IgM-ELISA. Of all samples (CHIKV-positive and negative), 81.6% (115/141) were DENV IgG-
279 positive indicating previous infection. Of the 118 CHIKV PCR-positive participants with malaria RDT
280 result, 28.8% were positive, with the highest proportion in those aged 15-29 years. No participants
281 were co-infected with all three pathogens.

282 Among participants with matched CHIKV PCR and ELISA results, 31/69 PCR-positive were also IgM-
283 positive, and 34/119 (28.6%) were CHIKV IgG positive (Figure 3). Participants who were CHIKV positive
284 on both PCR and IgM presented later in illness course than those who were CHIKV PCR-positive and
285 IgM-negative ($p < 0.001$). This finding was replicated with CHIKV PCR & IgG-positive patients who
286 presented later than CHIKV IgG-negative patients ($p = 0.002$).

287 There was a significant difference in mean haematocrit levels between CHIKV PCR-positive (mean
288 35.9, SD=6.27) and negative participants (mean 38.9, SD=7.41, $p = 0.05$), but no other significant
289 differences in blood chemistry. Heart rate and blood pressure were similar in both groups. In the
290 CHIKV PCR-positive cohort median haematology and biochemistry results were all within normal
291 ranges (Table 3). Leucopenia (white blood count $< 4 \times 10^9/L$) was observed in 29% (35/120) and
292 lymphopenia ($< 1 \times 10^9/L$) observed in 50.7% (61/120). Elevated AST ($> 40 IU/L$) was observed in 22.5%
293 (27/120) with six participants at levels $> 100 IU/L$ (max 259 IU/L). ALT levels $> 51 IU/L$ were seen in
294 seven participants with four recording levels > 100 (max 150 IU/L). Acute kidney injury was observed
295 in one fatal case. Platelet counts $< 100 \times 10^9/L$ were recorded in 23/120 CHIKV PCR-positive
296 participants, of whom 14/23 were also malaria RDT positive and none DENV PCR positive. Platelet
297 counts $< 50 \times 10^9/L$ were observed in six participants, three of whom also had positive malaria RDT.

298

299 **Table 3: Mean clinical parameters of participants at presentation by CHIKV qRT-PCR result**

	CHIKV+	SD	<i>n</i>	CHIKV-	SD	<i>n</i>
Heart rate (beats/min)	91.2	19.2	114	83.5	15.8	21
Respiratory rate	20.4	2.9	12	18.0	n/a	1
Systolic pressure	102.9	20.2	78	106.3	12.5	20
Diastolic pressure	68.0	13.1	78	70.2	7.5	20
Haemoglobin (g/dL)	11.6	2.2	120	12.5	2.5	22
Haematocrit (%)*	35.9	6.3	119	38.9	7.4	22
WBC (10 ³ /uL)	6.1	3.1	120	4.8	2.2	22
Lymphocytes (10 ³ /uL)	2.1	2.4	118	2.9	6.6	22
Platelets (10 ⁹ /L)	227.0	143.3	120	190.6	131.0	22
Nitrogen oxide	3.8	2.0	113	2.9	1.7	22
Urea (mg/dL)	24.8	14.9	119	26.1	11.3	22
Creatinine (mg/dL)	0.8	0.7	119	0.9	0.2	22
Bilirubin	0.7	1.5	119	0.9	1.3	22
AST (IU/L)	36.0	33.9	119	28.2	17.4	22
ALT (IU/L)	23.1	23.4	118	21.5	14.4	22
Albumin	14.9	6.8	69	17.6	6.4	17

*Significant difference: p=0.049

300
301
302

Severe or fatal disease

303 The study recruited one case with a fatal outcome - a male teacher aged 52 transferred to KTH 13 days
304 after onset of symptoms. He was CHIKV PCR-positive with a Ct of 30 and no coinfection. At admission
305 he had petechiae and minor bruising but no other evidence of bleeding. He died from sepsis
306 complicated by disseminated intravascular coagulation and acute kidney injury (Blood/Urea/Nitrogen
307 (BUN) 154 mg/dL, creatinine 7.8 mg/dL, AST 259 IU/L, ALT 59 IU/L, platelets 111 x 10⁹/L).

308 Two children *in extremis* with significant haemorrhage were recruited at the paediatric department.
309 Both were CHIKV PCR-positive without coinfection. The 16-year-old was admitted on day 2 of illness
310 with a history of fatigue, headache, back pain, anorexia, oral mucosal haemorrhage, and profuse
311 epistaxis. He was in shock (pulse 120, BP 84/50, respiratory rate 25) with a platelet count of 10 x 10⁹/L,
312 Hb 12.5 g/dL, WBC 10.5 x 10³/uL, HCT 38.9%, AST 47 IU/L, ALT 24 IU/L, BUN 26 mg/dL, creatinine 0.8
313 mg/dL and CHIKV PCR Ct 29.63. He was resuscitated with blood and platelet transfusion, underwent
314 nasal packing, and was discharged after 15 days. The second child aged 7 years presented on day 0 of
315 illness with epistaxis, haematemesis, melaena, bruising and anorexia. Her pulse was 130 and Hb 10.2
316 g/dL, WBC 4.6 x 10³/uL, platelet count 20 x 10⁹/L, HCT 30.7%, urea 22 mg/dL, creatinine 0.5 mg/dL,
317 AST 175 IU/L, ALT 129 IU/L and CHIKV PCR Ct of 26.8. She was also resuscitated with blood and
318 platelets and discharged well after nine days admission.

319

320 **Factors associated with CHIKV positivity**

321 The mean age of CHIKV PCR-positive patients was significantly less than CHIKV PCR-negative patients
322 ($p=0.003$). CHIKV PCR-positives were also more likely to report exposure to someone who was ill
323 ($p=0.01$) but as CHIKV is not transmitted person-to-person, this finding likely relates to being in the
324 same vector environment. No associations were found with any other exposure. Compared to those
325 with a single infection, CHIKV/DENV coinfecting participants had higher mean systolic blood pressure
326 ($p=0.03$) haemoglobin ($p=0.01$), haematocrit ($p=0.03$), bilirubin ($p=0.002$) and albumin ($p<0.001$).

327 **Convalescent follow-up**

328 Thirty (29.7%) of the 102 adult participants could be followed-up 90-120 days after enrolment, 29
329 (28.7%) refused, and 42 (41.6%) could not be reached. Parents of 30 of the 40 child participants
330 responded to contact. All 60 followed-up were CHIKV PCR-positive at baseline. Sixteen (26.6%) had
331 been admitted to hospital of whom four were children admitted for more than seven days (Table 4).
332 Respondents were more likely to be admitted if they had bleeding ($p=0.016$), vomiting ($p=0.014$), or a
333 positive malaria RDT ($p=0.001$). Of adults followed-up 43.3% (13/30) had spent 1-2 weeks off work
334 and 20.0% (6/30) 2 or more weeks. Twenty-three of the 30 convalescent samples collected (76.7%)
335 were IgG positive; 13 had seroconverted since recruitment and seven remained IgG negative.

336 **Chronic disability**

337 Nineteen of the 30 adults followed up at 90-120 days (63%) were still experiencing arthralgia, most
338 frequently in the knee (46.7% 14/30), ankle (36.7% 11/30) wrist (30.0% 9/30) and shoulder (26.7%
339 8/30). Asked to rank pain and general wellbeing over the previous week on a scale where 10 was the
340 most pain/most unwell, respondents reported a median pain score of 4 (IQR 2-5) and median
341 wellbeing score of 7 (IQR 3-8). A third (36.6%, 11/30) indicated their pain was greater or the same as
342 during the acute phase of their illness, and even those with less pain than before reported continuing
343 to take painkillers, anti-inflammatories, corticosteroids, or all three, for their condition. In total, 60%
344 continued to take medication.

345 Of the 28 respondents who completed the RAPID3 disability survey, three-quarters reported a
346 continuing effect on day-to-day activities, including difficulties getting out of bed (28%), walking 2
347 miles (35%) and getting in and out of a vehicle (17%), while 10-15% reported difficulty with activities
348 such as turning on taps, bending and sleeping well. Rapid3 scaling indicated that, 90-120 days after
349 their acute illness, 10.7% (3/28) of respondents were experiencing moderately severe disability and
350 60.7% (17/28) low severity disability. The remaining eight (28.6%) respondents were considered
351 nearly recovered. Neither level of viremia on admission, nor pre-existing conditions such as diabetes,

352 hypertension and osteoarthritis, were associated with level of residual disability, or duration of
353 absence from work.

354 **Table 4: Impact of CHIKV infection on work and disability 90-120 days after acute infection**

	Adults (n=101)	%/SD	Children (n=40)	%/sd	p (exact)
Follow-up response rate	30	29.7%	30	75.0%	
Hospital care (n=30)					
Discharged the same day	26	86.7%	18	60.0%	p=0.039
Admitted for at least 1 day	4	13.3%	12	40.0%	
Mean days admitted	2.3	sd 1.3	4.7	sd 4.1	
Absence from work					
< 1 week	11	36.7%			
1-2 weeks	13	43.3%			
3-4 weeks	4	13.3%			
>4 weeks	2	6.7%			
RAPID3 disability score (n=28)					
Near remission	8	28.6%			
Low disability	17	60.7%			
Moderate disability	3	10.7%			
Current presence of pain (n=30)	19	63.3%			
Location of pain (multiple possible)					
Knee	14	46.7%			
Ankle	11	36.7%			
Wrist	9	30.0%			
Shoulder	8	26.7%			
Fingers	7	23.3%			
Median pain perception score	4	IQR 2-5			
Median wellbeing score	7	IQR 3-8			

355
356 *Note: Pain perception and wellbeing are scored on a 0-10 scale with 10 being the worst pain and*
357 *feeling the worst*

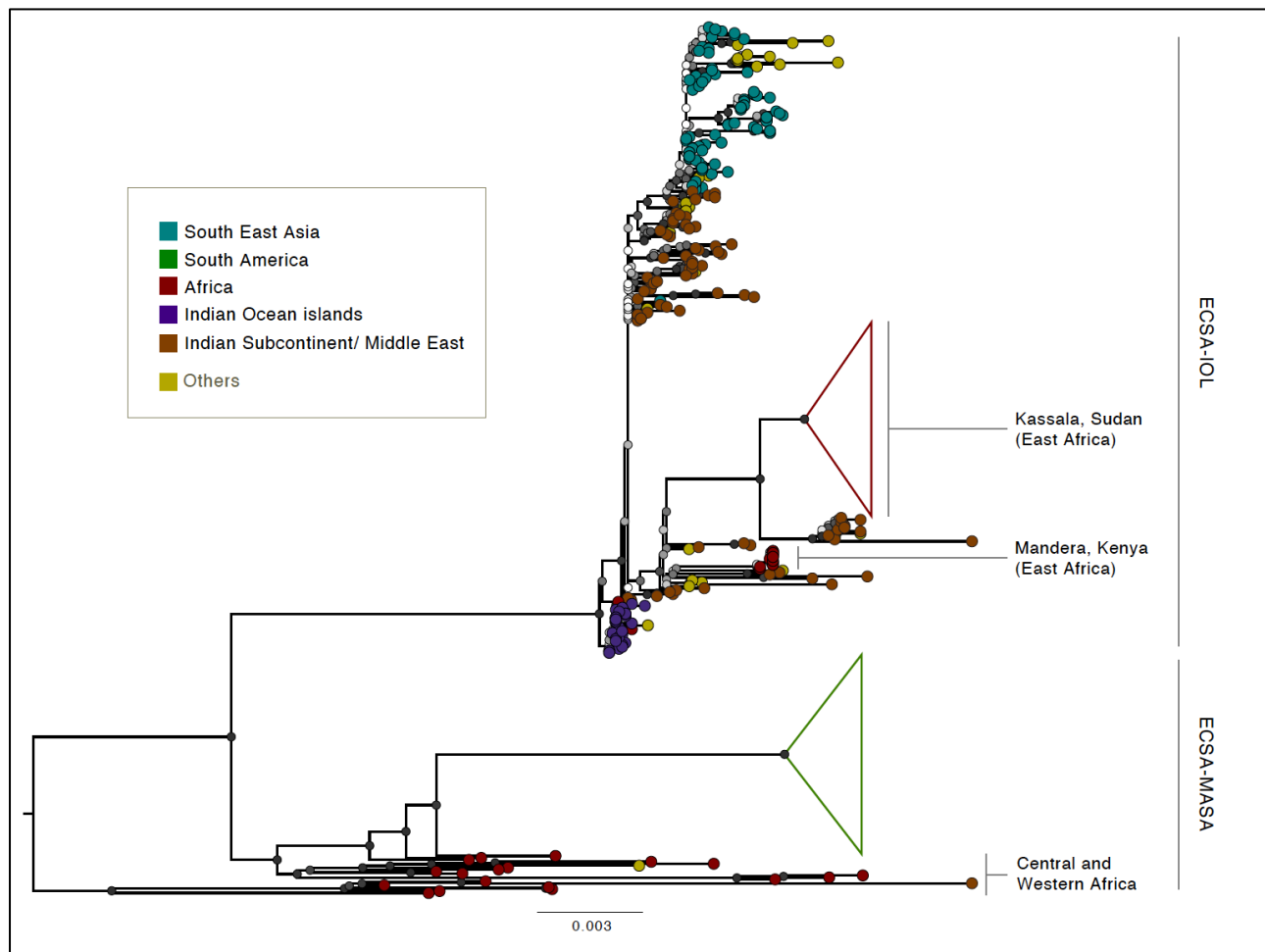
358 *[Data access link to be added]*

359 Genetic analysis

360 Virus genetic sequencing found that all CHIKV PCR-positive samples belonged to a single monophyletic
361 cluster in the Indian Ocean Lineage (IOL) of the ECSA genotype of CHIKV (Figure 4). This clade is distinct
362 from those previously identified in Western and Central Africa, suggesting that the Kassala outbreak
363 was caused by an independent introduction of an IOL strain into the region. This might have occurred
364 via the Middle East or Indian Subcontinent since the Kassala sequences are closely related to (i) the
365 Henan and Shivane variants identified in China and Hong Kong, which originated in returning travellers
366 from India/Pakistan, and (ii) a clade that includes sequences from a 2016 outbreak in Pakistan and
367 other sequences from India and Bangladesh. Absence of the A226V mutation - a mutation associated
368 with the capacity of the virus to infect *Ae. albopictus*^{31, 32} confirms *Ae. aegypti* as the most likely
369 outbreak vector species. (Figure 5)

370 *[Genbank accession numbers to be added]*

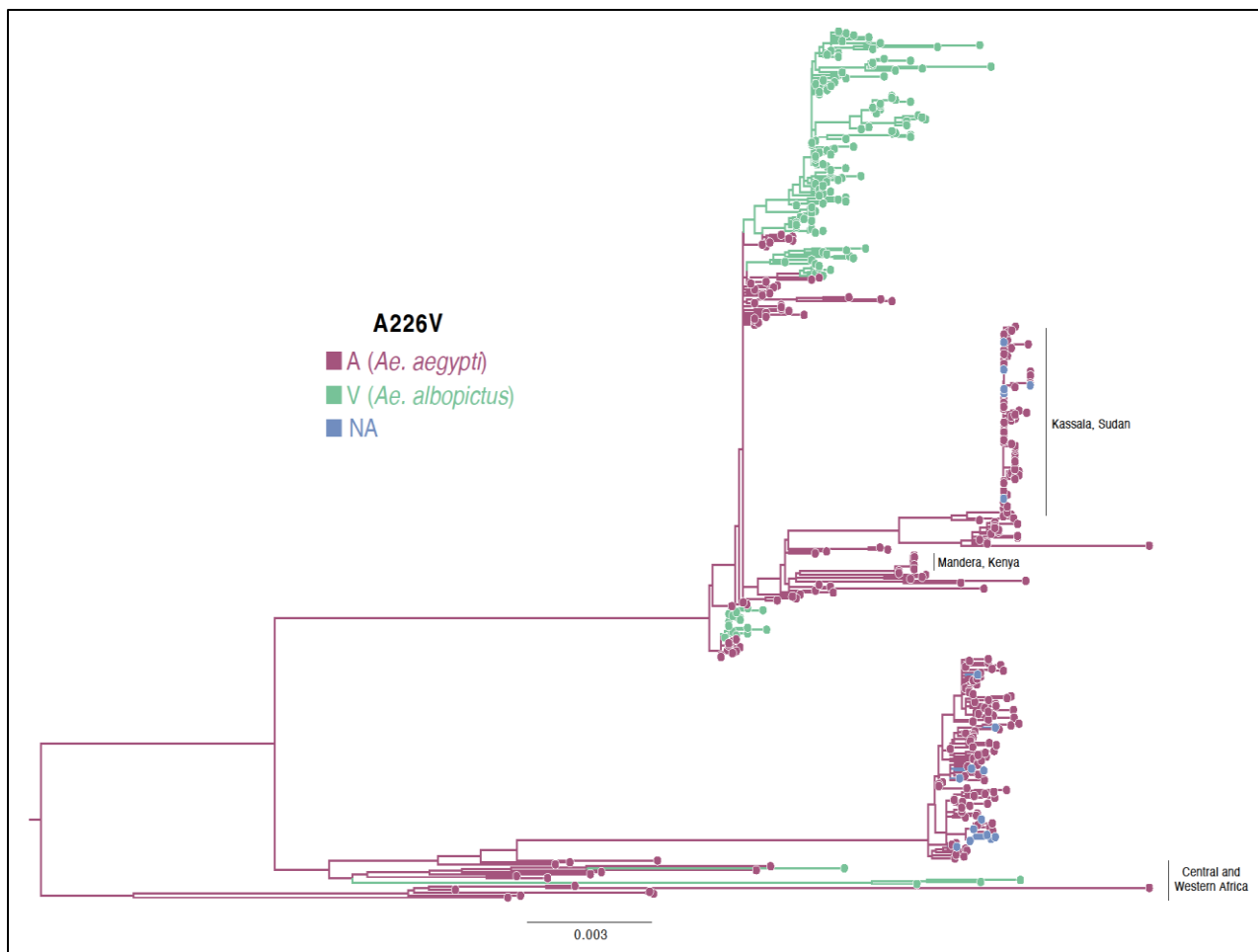
371 **Figure 5: Maximum likelihood phylogenetic tree of the ECSA genotype and its two distinct lineages**
372 **showing the location of the Kassala 2018/19 strain**



373

374 **Legend:** *Maximum likelihood phylogenetic tree of the East/Central/South African (ECSA) genotype and*
375 *its two distinct lineages: the Indian Ocean Lineage (IOL) and the Middle African/ South American*
376 *(MASA) lineage. The monophyletic Kassala epidemic clade groups with sequences that originate from*
377 *the Middle East and India and represents a distinct lineage from other African CHIKV variants. Node*
378 *support values were evaluated using 100 bootstrap replicates and are illustrated using colour at nodes*
379 *(with white representing 0 and black representing 100). The 2016 Madera outbreak also represents*
380 *a possible introduction from the Indian subcontinent and appears to be an independent event from the*
381 *Kassala epidemic. Both outbreaks share *Ae. aegypti* adaptive variant at site A226.*

382



383

384 **Figure 5:** CHIKV ECSA phylogenetic tree showing the amino acid identity at site 226 of the E1 protein,
385 associated with viral adaptation to different vector species. Viruses containing the A226 variant infect
386 *Ae. aegypti* more efficiently, while viruses containing the V226 variant more efficiently infect *Ae.*
387 *albopictus*. The evolution of this trait is mapped (through a parsimony reconstruction) on the tree in
388 different colours.

389

390 DISCUSSION

391 Our phylogenetic analysis suggests the unprecedented Chikungunya epidemic that took place in the
392 Eastern states of Sudan in 2018-19 was caused by an independent introduction of a CHIKV IOL virus,
393 of the same strain responsible for the outbreaks observed worldwide during 2004-2007 and linked to
394 more severe manifestations of CHIKV disease.

395 Even at the conservative estimate^{33, 34} of 487,600 cases, the epidemic that occurred in Kassala and Red
396 Sea States is the largest outbreak of Chikungunya in Africa and the Middle East to date, and there are
397 multiple reasons to suspect substantial under-reporting and underdiagnosis. Reasons for this include
398 reporting through sentinel surveillance sites normally intended to raise an alert rather than capture
399 every case, population reluctance to seek medical attention at hospitals due to cost and limited

400 treatment options, limited diagnostic resources, lack of data collection in private clinics, and the range
401 of CHIKV illness severity.

402 Made possible by the established research collaboration between the FMOH and the UK Public Health
403 Rapid Support Team on outbreak response, this study utilised pre-approved protocols, pre-trained
404 staff and, for the first time within Sudan, next generation sequencing technology in-country. We
405 confirmed that CHIKV was the dominant pathogen responsible for the outbreak, that DENV was also
406 circulating with 1 in 5 CHIKV positive patients co-infected, and importantly that there were a high
407 frequency of falciparum malaria transmission and of CHIKV/malaria co-infection.

408 The cohort recruited were young (median age 27) and largely presented with non-specific febrile
409 symptoms plus poly-articular joint pain. The substantial proportion (26%) admitted to hospital,
410 however, reflects high frequencies of co-infection and the potential for haemodynamic disturbance in
411 adults, and other manifestations of a severe phenotype observed in a subset of patients. As we have
412 described, 5% of patients with CHIKV (malaria and DENV negative) had evidence of bleeding and loss
413 of haemostasis. Two children in particular were gravely unwell with life-threatening haemorrhage
414 associated with severe thrombocytopenia and need for blood product resuscitation, while one adult
415 died of multi-organ failure including acute kidney injury.

416 Severe and fatal CHIKV infection has been reported previously during outbreaks challenging the
417 misconception that it is only a mild self-limiting diseases.^{13,35} Increased risk of severe disease has been
418 suggested in extremes of age (neonates and > 65 years) and those with underlying medical problems
419 including immunosuppression.^{10, 15} Severe disease has been associated with neurological
420 complications such as acute flaccid paralysis and Guillain-Barré syndrome.³⁶⁻³⁸ Brazil, Reunion Island
421 and India all reported high case fatality and excess deaths during their epidemics,^{12, 13, 16, 39, 40} though
422 fatality is still considered rare, occurring in less than 1 in 1000 cases.

423 These findings are consistent with the severe phenotype of CHIKV we observed in Kassala, including a
424 one confirmed CHIKV PCR-positive death and life-threatening bleeding due to loss of haemostasis with
425 thrombocytopenia. Additionally, the high frequency of *P.falciparum* infection detected underpins the
426 importance of both malaria diagnostics and public messaging in malaria-endemic settings when
427 chikungunya outbreaks occur.

428 Our study was biased towards more severe cases due to hospital-based recruitment and a low
429 response rate among and lack of a control for participants followed up within 90-120 days. However,
430 our findings that 63% of respondents had persistent pain three to four months after acute illness are
431 similar to those of a case-controlled study on La Reunion Island. This study found 53% of IOL-strain
432 CHIKV-positive participants reported twice as much pain compared to controls 12 months after their
433 illness.⁴¹ Our findings were also similar to those of a meta-analysis of chronic disability across all CHIKV

434 strains which found on average 52% of IOL-strain patients were still disturbed by symptoms at three
435 months, compared to 39% of Asian lineage and 14% of ECSA group patients.²¹

436 Our finding that the only significant risk factor for contracting CHIKV was proximity to a case suggests
437 identifying and supporting vector control measures acceptable to the community should be a priority
438 for public health authorities seeking to prevent future CHIKV and other *Aedes*-transmitted epidemics
439 in Sudan. Entomological research carried out by Kassala University in 2014/15 showed high *Ae. aegypti*
440 density across the city and a high proportion of households storing water in their compounds in un-
441 protected clay pots.⁴²⁻⁴⁴ In 2018 the situation was exacerbated by intense seasonal rainfall which
442 displaced 50,000 residents and flooded many areas, a situation that is being seen again in 2020.

443 Measures such as improved water infrastructure, covered water storage containers, and increased
444 population awareness of the importance of preventing mosquitoes from breeding in household
445 compounds are important.⁴² Heightened vector surveillance is also needed to monitor for presence of
446 *Ae. albopictus*, which could prompt further outbreaks of different CHIKV strains, as well as
447 investigation of the potential role in the sylvatic cycle of the large population of Macaques monkeys
448 which live close to residential areas.

449 Finally, but importantly, it is essential that State Ministries of Health throughout Sudan enhance their
450 risk communication and public information strategies around Chikungunya to underline that severe
451 and occasionally fatal infection exists. The epidemic we describe caused substantial health and
452 economic burden for the affected populations. With widespread presence of *Ae. aegypti* and a similar
453 water storage practices throughout Sudan, timely actions will be needed to prevent another large
454 outbreak in the near future.

455

456 **Acknowledgements and disclaimers**

457 The study team appreciates the collaboration of the leadership of the University of Kassala, Kassala
458 Teaching Hospital, Kassala State Ministry of Health, Federal Ministry of Health Directorate of Health
459 and Epidemics Control Directorate, and the National Public Health Laboratory. We also appreciate
460 the efforts of the International Severe Acute Respiratory and Emerging Infection Consortium to
461 create generic protocols including the Clinical Characterisation Protocol for Severe Emerging
462 Infections from which our study was adapted.⁴⁵ The UK Public Health Rapid Support Team is funded
463 by UK aid from the Department of Health and Social Care and is jointly run by Public Health England
464 and the London School of Hygiene & Tropical Medicine. The University of Oxford and King's College
465 London are academic partners. The views expressed in this publication are those of the authors and

466 not necessarily those of the National Health Service, the National Institute for Health Research, or
467 the Department of Health and Social Care.

468

469 REFERENCES

- 470 1. Bonney JH, Osei-Kwasi M, Adiku TK, Barnor JS, Amesiya R, Kubio C, Ahadzie L, Olschlager S,
471 Lelke M, Becker-Ziaja B, Pahlmann M, Gunther S. Hospital-based surveillance for viral hemorrhagic
472 fevers and hepatitis in Ghana. *PLoS neglected tropical diseases*. 2013;7(9):e2435
- 473 2. Russo G, Subissi L, Rezza G. Chikungunya fever in Africa: a systematic review. *Pathogens and*
474 *Global Health*. 2020 2020/04/02;114(3):111-9
- 475 3. Humphrey JM, Cleton NB, Reusken CBEM, Glesby MJ, Koopmans MPG, Abu-Raddad LJ.
476 Urban Chikungunya in the Middle East and North Africa: A systematic review. *PLoS neglected*
477 *tropical diseases*. 2017;11(6):e0005707
- 478 4. Robinson MC. An epidemic of virus disease in Southern Province, Tanganyika territory, in
479 1952–1953. *Transactions of the Royal Society of Tropical Medicine and Hygiene*. 1955
480 1955/01/01;49(1):28-32
- 481 5. Ng LC, Hapuarachchi HC. Tracing the path of Chikungunya virus--evolution and adaptation.
482 *Infect Genet Evol*. 2010 Oct;10(7):876-85
- 483 6. Rossi G, Karki S, Smith RL, Brown WM, Ruiz MOH. The spread of mosquito-borne viruses in
484 modern times: A spatio-temporal analysis of dengue and chikungunya. *Spatial and Spatio-temporal*
485 *Epidemiology*. 2018 2018/08/01;26:113-25
- 486 7. Leroy EM, Nkoghe D, Ollomo B, Nze-Nkogue C, Becquart P, Grard G, Pourrut X, Charrel R,
487 Moureau G, Ndjoi-Mbiguino A, De-Lamballerie X. Concurrent chikungunya and dengue virus
488 infections during simultaneous outbreaks, Gabon, 2007. *Emerging infectious diseases*.
489 2009;15(4):591-3
- 490 8. Staples JE, Breiman RF, Powers AM. Chikungunya fever: an epidemiological review of a re-
491 emerging infectious disease. *Clinical infectious diseases : an official publication of the Infectious*
492 *Diseases Society of America*. 2009 Sep 15;49(6):942-8
- 493 9. Pezzi L, Diallo M, Rosa-Freitas MG, Vega-Rua A, Ng LFP, Boyer S, Drexler JF, Vasilakis N,
494 Lourenco-de-Oliveira R, Weaver SC, Kohl A, de Lamballerie X, Failloux AB, Brasil P, Busch M, Diamond
495 MS, Drebot MA, Gallian P, Jaenisch T, LaBeaud AD, Lecuit M, Neyts J, Reusken CB, Ribeiro GS, Rios M,
496 Rodriguez-Morales AJ, Sall A, Simmons G, Simon F, Siqueira AM. GloPID-R report on chikungunya,
497 o'nyong-nyong and Mayaro virus, part 5: Entomological aspects. *Antiviral research*. 2020
498 2020/02/01;174:104670
- 499 10. van Aalst M, Nelen CM, Goorhuis A, Stijns C, Grobusch MP. Long-term sequelae of
500 chikungunya virus disease: A systematic review. *Travel medicine and infectious disease*. 2017 Jan -
501 Feb;15:8-22
- 502 11. Paixão ES, Teixeira MG, Rodrigues LC. Zika, chikungunya and dengue: the causes and threats
503 of new and re-emerging arboviral diseases. *BMJ Global Health*. 2018;3(Suppl 1):e000530
- 504 12. Burt FJ, Chen W, Miner JJ, Lenschow DJ, Merits A, Schnettler E, Kohl A, Rudd PA, Taylor A,
505 Herrero LJ, Zaid A, Ng LFP, Mahalingam S. Chikungunya virus: an update on the biology and
506 pathogenesis of this emerging pathogen. *The Lancet Infectious Diseases*. 2017;17(4):e107-e17
- 507 13. Rajapakse S, Rodrigo C, Rajapakse A. Atypical manifestations of chikungunya infection.
508 *Transactions of the Royal Society of Tropical Medicine and Hygiene*. 2010 2010/02/01;104(2):89-96
- 509 14. Mehta R, Gerardin P, de Brito CAA, Soares CN, Ferreira MLB, Solomon T. The neurological
510 complications of chikungunya virus: A systematic review. *Reviews in medical virology*.
511 2018;28(3):e1978-e
- 512 15. Economopoulou A, Dominguez M, Helynck B, Sissoko D, Wichmann O, Quenel P,
513 Germonneau P, Quatresous I. Atypical Chikungunya virus infections: clinical manifestations,
514 mortality and risk factors for severe disease during the 2005–2006 outbreak on Réunion.
515 *Epidemiology and Infection*. 2009;137(4):534-41

- 516 16. Lemant J, Boisson V, Winer A, Thibault L, André H, Tixier F, Lemerrier M, Antok E, Cresta MP,
517 Grivard P, Besnard M, Rollot O, Favier F, Huerre M, Campinos JL, Michault A. Serious acute
518 chikungunya virus infection requiring intensive care during the reunion island outbreak in 2005–
519 2006*. 2008;36(9):2536-41
- 520 17. Contopoulos-Ioannidis D, Newman-Lindsay S, Chow C, LaBeaud AD. Mother-to-child
521 transmission of Chikungunya virus: A systematic review and meta-analysis. PLoS neglected tropical
522 diseases. 2018;12(6):e0006510
- 523 18. Gérardin P, Sampéris S, Ramful D, Boumahni B, Bintner M, Alessandri J-L, Carbonnier M,
524 Tiran-Rajaoefera I, Beullier G, Boya I, Noormahomed T, Okoi J, Rollot O, Cotte L, Jaffar-Bandjee M-C,
525 Michault A, Favier F, Kaminski M, Fourmaintraux A, Fritel X. Neurocognitive Outcome of Children
526 Exposed to Perinatal Mother-to-Child Chikungunya Virus Infection: The CHIMERE Cohort Study on
527 Reunion Island. PLoS neglected tropical diseases. 2014;8(7):e2996
- 528 19. Innovations CfEP. The world needs a chikungunya vaccine [Accessed 05 Aug 2020]. Available
529 from: https://cepi.net/news_cepi/the-world-needs-a-chikungunya-vaccine/.
- 530 20. Lima STSd, Souza WMd, Cavalcante JW, da Silva Candido D, Fumagalli MJ, Carrera J-P,
531 Simões Mello LM, de Carvalho Araújo FM, Cavalcante Ramalho IL, de Almeida Barreto FK, de Melo
532 Braga DN, Simião AR, Miranda da Silva MJ, Oliveira RdMAB, Lima CPS, Sousa Lins Cd, Barata RR, Melo
533 MNP, de Souza MPC, Franco LM, Távora FRF, Queiroz Lemos DR, Alencar CHMd, Jesus Rd, Souza
534 Fonseca Vd, Dutra LH, Abreu ALd, Araújo ELL, Ribas Freitas AR, Gonçalves Vianez Júnior JLDs, Pybus
535 OG, Moraes Figueiredo LT, Faria NR, Teixeira Nunes MR, Góes Cavalcanti LPd, Miyajima F. Fatal
536 outcome of chikungunya virus infection in Brazil. Clinical Infectious Diseases. 2020
- 537 21. Paixao ES, Rodrigues LC, Costa M, Itaparica M, Barreto F, Gerardin P, Teixeira MG.
538 Chikungunya chronic disease: a systematic review and meta-analysis. Transactions of the Royal
539 Society of Tropical Medicine and Hygiene. 2018 Jul 1;112(7):301-16
- 540 22. Ashcroft J, Gannon B, Bower H, Hornsey E, Knight M, Whitworth J, Bausch DG. The UK public
541 health rapid support team: a novel programme integrating outbreak response, operational research,
542 and capacity building. Access Microbiology. 2019;1(1A):-
- 543 23. Bower H, El Karsany M, Alzain M, Gannon B, Mohamed R, Mahmoud I, Eldegail M, Taha R,
544 Osman A, Mohamednour S, Semper A, Atkinson B, Carter D, Dowall S, Furneaux J, Graham V, Mellors
545 J, Osborne J, Pullan ST, Slack GS, Brooks T, Hewson R, Beeching NJ, Whitworth J, Bausch DG, Fletcher
546 TE. Detection of Crimean-Congo Haemorrhagic Fever cases in a severe undifferentiated febrile illness
547 outbreak in the Federal Republic of Sudan: A retrospective epidemiological and diagnostic cohort
548 study. PLoS neglected tropical diseases. 2019;13(7):e0007571
- 549 24. Markoff L. Yellow fever outbreak in Sudan. The New England journal of medicine.
550 2013;368:689-91
- 551 25. World Health Organisation. Dengue Fever - Republic of the Sudan 2019 [accessed 1 January
552 2020]. Available from: <https://www.who.int/csr/don/22-november-2019-dengue-sudan/en/>.
- 553 26. American College of Rheumatology. Routine Assessment of Patient Index Data 3 (RAPID3)
554 [Accessed Oct 2018]. Available from:
555 <https://www.rheumatology.org/Portals/0/Files/RAPID3%20Form.pdf>.
- 556 27. Kafetzopoulou LE, Efthymiadis K, Lewandowski K, Crook A, Carter D, Osborne J, Aarons E,
557 Hewson R, Hiscox JA, Carroll MW, Vipond R, Pullan ST. Assessment of metagenomic Nanopore and
558 Illumina sequencing for recovering whole genome sequences of chikungunya and dengue viruses
559 directly from clinical samples. Euro surveillance : bulletin Europeen sur les maladies transmissibles =
560 European communicable disease bulletin. 2018;23(50):1800228
- 561 28. Ondov BD, Starrett GJ, Sappington A, Kostic A, Koren S, Buck CB, Phillippy AM. Mash Screen:
562 high-throughput sequence containment estimation for genome discovery. Genome biology. 2019
563 2019/11/05;20(1):232
- 564 29. Katoh K, Standley DM. MAFFT Multiple Sequence Alignment Software Version 7:
565 Improvements in Performance and Usability. Molecular Biology and Evolution. 2013;30(4):772-80
- 566 30. Stamatakis A. RAxML version 8: a tool for phylogenetic analysis and post-analysis of large
567 phylogenies. Bioinformatics. 2014;30(9):1312-3

- 568 31. Tsetsarkin KA, Vanlandingham DL, McGee CE, Higgs S. A Single Mutation in Chikungunya
569 Virus Affects Vector Specificity and Epidemic Potential. *PLOS Pathogens*. 2007;3(12):e201
- 570 32. Lindh E, Argentini C, Remoli ME, Fortuna C, Faggioni G, Benedetti E, Amendola A, Marsili G,
571 Lista F, Rezza G, Venturi G. The Italian 2017 Outbreak Chikungunya Virus Belongs to an Emerging
572 *Aedes albopictus*-Adapted Virus Cluster Introduced From the Indian Subcontinent. *Open forum*
573 *infectious diseases*. 2018;6(1):ofy321-ofy
- 574 33. Hsu CH, Cruz-Lopez F, Vargas Torres D, Perez-Padilla J, Lorenzi OD, Rivera A, Staples JE, Lugo
575 E, Munoz-Jordan J, Fischer M, Garcia Gubern C, Rivera Garcia B, Alvarado L, Sharp TM. Risk factors
576 for hospitalization of patients with chikungunya virus infection at sentinel hospitals in Puerto Rico.
577 *PLoS neglected tropical diseases*. 2019;13(1):e0007084-e
- 578 34. Dorleans F, Hoen B, Najioullah F, Herrmann-Storck C, Schepers KM, Abel S, Lamaury I, Fagour
579 L, Cesaire R, Guyomard S, Troudard R, Adelaide Y, Romagne MJ, Davidas M, Rochais S, Boa S, de
580 Saint-Alary F, Preira A, Saint-Martin P, Vaidie A, Melin M, Daudens-Vaysse E, Rosine J, Blateau A,
581 Carvalho L, Septfons A, Paty MC, Leduc G, Cassadou S, Ledrans M, Cabie A. Outbreak of Chikungunya
582 in the French Caribbean Islands of Martinique and Guadeloupe: Findings from a Hospital-Based
583 Surveillance System (2013-2015). *Am J Trop Med Hyg*. 2018 Jun;98(6):1819-25
- 584 35. Suhrbier A. Rheumatic manifestations of chikungunya: emerging concepts and interventions.
585 *Nature Reviews Rheumatology*. 2019 2019/10/01;15(10):597-611
- 586 36. Sá PKdO, Nunes MM, Leite I, Campelo M, Leão C, Souza JdC, RF. L, Fernandes A. Chikungunya
587 virus infection with severe neurologic manifestations: report of four fatal cases. *Revista da*
588 *Sociedade Brasileira de Medicina Tropical*. 2017;50:265-8
- 589 37. Wielanek AC, Monredon JD, Amrani ME, Roger JC, Serveaux JP. Guillain-barré syndrome
590 complicating a chikungunya virus infection. *Neurology*. 2007;69(22):2105
- 591 38. Singh SS, Manimunda SP, Sugunan AP, Sahina, Vijayachari P. Four cases of acute flaccid
592 paralysis associated with chikungunya virus infection. *Epidemiology and infection*. 2008;136(9):1277-
593 80
- 594 39. Mavalankar D, Shastri P, Bandyopadhyay T, Parmar J, Ramani KV. Increased mortality rate
595 associated with chikungunya epidemic, Ahmedabad, India. *Emerg Infect Dis*. 2008 Mar;14(3):412-5
- 596 40. Josseran L, Paquet C, Zehgnoun A, Caillere N, Le Tertre A, Solet J-L, Ledrans M. Chikungunya
597 disease outbreak, Reunion Island. *Emerging infectious diseases*. 2006;12(12):1994-5
- 598 41. Soumahoro M-K, Gérardin P, Boëlle P-Y, Perrau J, Fianu A, Pouchot J, Malvy D, Flahault A,
599 Favier F, Hanslik T. Impact of Chikungunya Virus Infection on Health Status and Quality of Life: A
600 Retrospective Cohort Study. *PLOS ONE*. 2009;4(11):e7800
- 601 42. Ahmed R, Hassan S, Abdallah K, Enan M. Breeding and Resting Behaviour of *Aedes aegypti* in
602 Indoor and Outdoor Environment in Kassala City, Sudan 2014/2015. *Health Science Journal*. 2019;13
603 (5: 672)
- 604 43. Ahmed R, Hassan S. Seasonal indices of *Aedes aegypti* (Diptera: Culicidae) in an urban area
605 of Kassala City, Sudan, 2014- 2015. *Europ Acad Res*. 2019 V1(10)
- 606 44. Ahmed R, Hassan S, Elrahman A. Climatic Factors Affecting Density of *Aedes aegypti*
607 (Diptera: Culicidae) in Kassala City, Sudan 2014/2015. *Asploro Journal of Biomedical and Clinical Case*
608 *Reports*. 2019;2(2):58-68
- 609 45. International Severe Acute Respiratory and Emerging Infections Consortium, World Health
610 Organisation. ISARIC-WHO Clinical Characterization Protocol for Severe Emerging Infections (v.3
611 2014) [Accessed 6 October 2016]. Available from: [https://isaric.tghn.org/protocols/clinical-](https://isaric.tghn.org/protocols/clinical-characterization-protocol/)
612 [characterization-protocol/](https://isaric.tghn.org/protocols/clinical-characterization-protocol/).