

1 SARS-CoV-2 PCR cycle threshold at hospital admission associated with Patient
2 Mortality

3 Jui Choudhuri^{1*}, Jamal Carter¹, Randin Nelson¹, Karin Skalina¹, Marika Osterbur-Badhey¹, Andrew
4 Johnson², Doctor Goldstein¹, Monika Paroder¹, James Szymanski^{1*}

5 1-Department of Pathology, Montefiore Medical Center, Albert Einstein College of Medicine, Bronx, N.Y.

6 2-Department of Medicine, Saint Vincent's Medical Center, Bridgeport CT USA

7 *These authors have equal contribution to the study and preparation of the manuscript

8 Address Correspondence to:

9 James Szymanski MD, MHA
10 Department of Pathology
11 Montefiore Medical Center/Albert Einstein College of Medicine
12 Bronx, NY
13 jszymans@montefiore.org

14

15

16

17

18

19

20

21

22

23

24

25 Keywords: COVID-19, Coronavirus, Coronavirus 2019, PCR cycle threshold

26

27 Financial Support: none

28

29 ABSTRACT

30 **Background:**

31 Severe acute respiratory syndrome coronavirus 2 (SARS-CoV-2) cycle threshold (Ct) has been suggested
32 as an approximate measure of initial viral burden. The relationship of initial Ct at hospitalization and
33 patient mortality has not been thoroughly investigated.

34 **Methods and findings**

35 We conducted a retrospective study of SARS-CoV-2 positive, hospitalized patients from 3/26/2020 to
36 8/5/2020 who had SARS-CoV-2 Ct data within 48 hours of admission (n=1044). Only patients with
37 complete survival data discharged (n=774) or died in hospital (n=270), were included in our analysis.
38 Laboratory, demographic, and clinical data were extracted from electronic medical records.
39 Multivariable logistic regression was applied to examine the relationship of patient mortality with Ct
40 values while adjusting for established risk factors. Ct was analyzed as continuous variable and
41 subdivided into quartiles to better illustrate its relationship with outcome. Cumulative incidence curves
42 were created to assess whether there was a survival difference in the setting of the competing risks of
43 death versus patient discharge.

44 Mean Ct at admission was higher for survivors (28.6, SD=5.8) compared to non-survivors (24.8, SD=6.0,
45 $P<0.001$). Patients with lower Ct value on admission had higher odds ratio (0.91, CI 0.89-0.94, $p<0.001$)
46 of in-hospital mortality after adjusting for age, gender, BMI, hypertension and diabetes. Patients with Ct
47 values in 3rd Quartile (Ct 27.4-32.8) and 4th Quartile (Ct >32.9) had lower odds of in-hospital death
48 ($P<0.001$). On comparing, Ct quartiles, mortality, BMI and GFR were significantly different ($p<0.05$)
49 between the groups. The cumulative incidence of all-cause mortality and discharge was found to differ
50 between Ct quartiles (Gray's Test $P<0.001$).

51 **Conclusion:**

52 SARS-CoV-2 Ct was found to be an independent predictor of patient mortality. However, further study is
53 needed on how to best clinically utilize such information given the result variation due to specimen
54 quality, phase of disease, and the limited discriminative ability of the test.

55

56 AUTHOR SUMMARY

57 Severe acute respiratory syndrome coronavirus 2 (SARS-CoV-2) pandemic has effected the entire world,
58 with approximately 23 million affected till date. Clinicians, researcher and scientists are making all
59 efforts to identify ways of diagnosis, predicting outcome and treatment modalities. The polymerase
60 chain reaction (rT-PCR) technology, is the standard test being used for the diagnosis and it gives an
61 additional value known as “cycle threshold” (Ct), which is the number of PCR cycles required to cross the
62 designated threshold and termed patient as positive for the infection. This Ct value is inverse of the viral
63 load in the patient and has been studied as indicator of outcome of infection. In this study we have
64 analyzed the Ct value as a predictor for mortality and compared it between different age and gender.
65 We found the Ct value significantly different between those who survived and those who died due to
66 the disease. However proper utilization of the Ct value needs further studies to be utilized in the clinical
67 setting and guide decision making.

68

69

70

71

72

73

74

75

76 **Introduction:**

77 Severe acute respiratory syndrome coronavirus 2 (SARS-CoV-2), the causative agent of COVID-19 is a
78 novel betacoronavirus that first appeared in Wuhan, Hubei Province, China in late December 2019.(1)
79 This virus has led to a global pandemic with over 23 million people infected worldwide with an overall
80 mortality rate between 1.4% and 5%.(2, 3) It was declared a pandemic by the World Health Organization
81 (WHO) on March 11, 2020.(4) While scientists, clinicians and researchers continue to grapple with the
82 infection, the continuous in-flow of clinical data is helping to guide diagnostic, treatment and prognostic
83 characteristics of the disease.

84 COVID-19 has wide-ranging clinical presentation, with 80% of cases being mild, 15% developing lower
85 respiratory tract disease such as pneumonia, and less than 5% developing severe illness.(5) For those
86 who progress to severe disease, the clinical course is insidious, with mild initial illness progressing to
87 major complications in the second week.(5) The requirement for mechanical ventilation ranges from 18
88 to 33%, approximately 20% of hospitalized patients die of disease.(6-10) Multiple factors have been
89 studied in association with disease severity, such as D-dimer, lymphopenia, obesity, hypertension and
90 diabetes mellitus (DM) and there is still a continuous search for a reliable marker to predict disease
91 aggressiveness.(11-16)

92 Real-time reverse-transcriptase (rRT-PCR) is a major modality of diagnosing infection. The cycle number
93 (Ct) derived is the amplification required for the target viral gene to cross a threshold value and is
94 inversely related to the viral load.(17) Kawase et al. have defined Ct as the cycle number when the
95 sample fluorescence exceeds a set above the calculated background fluorescence.(18) There is limited
96 literature exploring the association of Ct and disease mortality, and there has been variability in the
97 findings.(10, 17, 19, 20) The objective of this study is to examine the relationship between SARS-CoV-2
98 cycle threshold at hospital admission and its relationship to patient outcome.

99

100

101 **Methodology:**

102 In this retrospective observational study we included all hospitalized patients at Montefiore Medical
103 Center between 3/26/2020 and 8/5/2020 with a positive SARS-CoV-2 nasopharyngeal swab specimen on
104 the Panther Fusion System (Hologic, Inc.) that was collected within 48 hours of admission. Subjects
105 under the age of 18, current inpatients, those with initial SARS-CoV-2 testing on the Fusion system >48
106 hours after admission, or missing BMI were excluded from the analysis.(Figure 1)The patient information
107 and data including test results and comorbidities were collected retrospectively from electronic medical
108 records. Vital sign data included in the study, represented the first recorded vitals in the hospital records
109 during admission and the biochemical and other parameters were indexed as the closest result within
110 48 hours to SARS-CoV-2 testing. The study was approved by the Albert Einstein College of Medicine
111 Institutional Review Board.

112 Viral testing was performed on the Panther Fusion System (Hologic, Inc.) rRT-PCR platform, which has
113 received Emergency Use Authorization with the Food and Drug Administration (FDA). All testing was
114 performed according to the manufacturer's instructions. The basic steps of the assay include sample
115 lysis, nucleic acid capture, elution transfer, and multiplex RT-PCR where analytes are simultaneously
116 amplified and detected. Results are reported as positive or negative depending on detectable
117 amplification. The instrument also generates a Ct value. For the purpose of this study, Ct was divided
118 into quartiles (Q1, Q2, Q3 and Q4) for grouping samples and studying the significance of viral load as an
119 indirect marker. Low Ct corresponded to higher viral load.

120 Statistical Analysis: Demographic and baseline group differences were assessed using chi-square tests, 2-
121 sample Student t-tests, and for non-normally distributed data, the Mann-Whitney U test. The

122 correlation between variables was assessed using the Kendall rank correlation method due to non-
123 parametric data. The relationship between in-hospital mortality, cycle quartile, clinical risk factors, and
124 biomarkers was modeled using logistic regression. Model covariate selection was based on literature
125 review of identified SARS-CoV-2 survival risk factors. Model fit was assessed using the Hosmer and
126 Lemeshow test which found $p > 0.05$, thus not detecting evidence of poor fit. Multicollinearity was
127 evaluated using variance inflation factors. Model discriminative ability was validated by calculating
128 bootstrapped AUC. Cumulative incidence curves were created to assess whether there was a survival
129 difference by cycle threshold quartile. This approach was used to account for the competing risks of in-
130 hospital mortality versus patient discharge. A sensitivity analysis was carried out which assessed for
131 patterns in missing data, study result sensitivity to covariate selection, and time period selected.(S1-S4)
132 Analyses were performed using R version 3.6.2. A p -value < 0.05 was considered statistically significant.

133 RESULTS

134

135 A total of 1,044 patients met study inclusion criteria, of these 774 (74.1%) survived to discharge and 270
136 (25.9%) expired. Fig 1 In our cohort, 55.6% (580) patients were males and 44.4% (464) females with a
137 mean age of 65.2 years (SD 15.37) and a mean BMI of 29.6 (SD 7.4). A history of hypertension (HTN) and
138 Diabetes (DM) was present in 64.1% (629) and 40.8% (400), respectively. The majority of patients had
139 group O blood-type, 46.5% (410), followed by group A blood-type, 31.6% (278).

140

141 Ct at admission was positively correlated with patient survival ($r=0.22$, $p < 0.001$) (Figure 2). To better
142 illustrate the magnitude of the effect, Ct was divided into quartiles (Q1, Q2, Q3 and Q4). The Q1 group
143 consisted of cycle numbers < 22.9 , Q2 was cycle numbers between 23.0 and 27.3, Q3 was between 27.4
144 and 32.8 and Q4 was > 32.9 . It was noted that mortality was significantly different between the four
145 groups, with highest mortality in those with lowest Ct (Q1=41.4%) and lowest in the group with highest

146 Ct (Q4=13.2%) ($p<0.001$). Table 1. The association of cycle quartile and patient mortality held when
 147 stratified across age groups (Fisher's exact test $p<0.05$ for all groups.) Fig 3. The cycle quartile was
 148 compared between age groups and gender. Fig 4. The cumulative incidence of hospital discharge varied
 149 across the cycle quartile (Gray's Test $P<0.001$), as did the patient mortality (Gray's test $P<0.001$). Fig 5.
 150

151 **Table 1.** Study Characteristics by COVID-19 PCR Cycle Quartile
 152

	Overall Cohort	Cohort characteristics stratified by PCR Cycle Quartile				p value
		Q1 (<22.9)	Q2 ($23.0-27.3$)	Q3 ($27.4-32.8$)	Q4 (>32.9)	
n (%)	1044	263	263	260	258	<0.001
Mortality, n (%)	270 (25.9)	109 (41.4)	84 (31.9)	43 (16.5)	34 (13.2)	
LOS, median [IQR]	6.0 [3.0, 11.0]	6.0 [3.0, 12.0]	6.0 [3.0, 9.2]	6.0 [3.0, 9.7]	6.0 [4.0, 9.7]	0.33
Male, n (%)	580 (55.6)	153 (58.2)	154 (58.6)	134 (51.5)	139 (53.9)	0.29
Age, mean (SD)	65.2 (15.3)	69.4 (15.0)	66.6 (14.6)	62.6 (14.3)	62.2 (17.5)	0.52
BMI, mean (SD)	29.6 (7.4)	27.8 (7.6)	30.3 (7.8)	30.2 (6.8)	30.1 (7.1)	<0.001
eGFR, mean (SD)	63.1 (34.5)	55.9 (33.9)	60.7 (35.6)	67.8 (33.4)	69.0 (33.2)	<0.001
LDH, median [IQR]	403 [303, 548]	373 [270, 537]	393 [306,549]	419[321,582]	413 [306, 538]	0.03
Initial PO ₂ , mean (SD)	93.0 (5.8)	94.4 (7.5)	94.7 (7.6)	94.8 (6.6)	94.6 (7.2)	0.48
Initial DBP*, mean (SD)	68.4 (14.9)	66.2 (15.8)	66.3 (15.2)	70.3 (14.2)	70.8 (13.6)	<0.001
Hx of DM [Yes], n (%)	400 (40.8)	113 (44.5)	98 (38.0)	100 (39.7)	89 (41.0)	0.49
Hx of HTN [Yes], n (%)	629 (64.1)	180 (70.9)	163 (63.2)	157 (62.3)	129 (59.4)	0.06
ABO Type, n (%)						0.24
Type A	278 (31.6)	85 (36.6)	77 (33.6)	57 (26.9)	59 (29.2)	
Type AB	41 (4.7)	8 (3.5)	11 (4.8)	11 (5.2)	11 (5.3)	
Type B	152 (17.3)	29 (12.6)	43 (18.8)	43 (20.3)	37 (17.7)	
Type O	410 (46.5)	109 (47.2)	98 (42.8)	101 (47.6)	102 (48.8)	

153

154

155 A multivariate logistic model was created describing the impact of cycle quartile, patient age, gender,
 156 BMI, and the comorbidities of hypertension and diabetes on patient survival. With the first cycle quartile
 157 (Q1) set as reference the adjusted odds of patient mortality decreased as cycle quartile increased,

158 becoming significant in Q3 (aOR 0.34, CI 0.22-0.52, P<0.001) and Q4 (aOR 0.26, CI 0.16-0.42, p<0.001).
 159 Table 2. Male gender was found to confer a heightened risk of COVID-19 in-hospital mortality (aOR 1.88,
 160 CI 1.37-2.59, p<0.01). Likewise increased age, BMI, and a history of diabetes were all found to increase
 161 adjusted odds of in hospital mortality. Interestingly comorbid hypertension was found significant in
 162 univariable analysis but lost significance in the multivariable model.

163 **Table 2.** Logistic Regression table of In-Hospital Mortality
 164

In-Hospital Mortality		Expired	Survived	Odds ratio (univariable)	Odds ratio (multivariable)
Age	Mean (SD)	72.4 (12.9)	62.8 (15.4)	1.05 (1.04-1.06, p<0.001)	1.05 (1.04-1.06, p<0.001)
Cycle Quartile	Q1	109 (40.4)	154 (19.9)	-	-
	Q2	84 (31.1)	179 (23.1)	0.66 (0.46-0.95, p=0.024)	0.68 (0.46-1.00, p=0.050)
	Q3	43 (15.9)	217 (28.0)	0.28 (0.18-0.42, p<0.001)	0.34 (0.22-0.52, p<0.001)
	Q4	34 (12.6)	224 (28.9)	0.21 (0.14-0.33, p<0.001)	0.26 (0.16-0.42, p<0.001)
Gender	F	97 (35.9)	367 (47.4)	-	-
	M	173 (64.1)	407 (52.6)	1.61 (1.21-2.15, p=0.001)	1.88 (1.37-2.59, p<0.001)
BMI	Mean (SD)	29.2 (8.2)	29.8 (7.2)	0.99 (0.97-1.01, p=0.301)	1.03 (1.01-1.06, p=0.006)
DM	No	139 (52.1)	442 (61.9)	-	-
	Yes	128 (47.9)	272 (38.1)	1.50 (1.13-1.99, p=0.005)	1.38 (1.00-1.90, p=0.048)
HTN	No	74 (27.7)	278 (38.9)	-	-
	Yes	193 (72.3)	436 (61.1)	1.66 (1.23-2.27, p=0.001)	1.03 (0.72-1.47, p=0.868)

165
 166 The use of cycle threshold as a reported parameter predictive of inpatient mortality is limited by
 167 variation in sample collection, sample run variation, and the lack of a high-performing cutoff value Fig 6
 168 and 7. The variation in optimal cutoff was assessed by bootstrapping with 1000 replications with ideal

169 cutpoint determined using Youden's index. The cutpoint which maximized Youden's statistic was found
170 to be 26 (CI 26-27). At this cutpoint, the testing set (out-of-bag) sensitivity was found to be 0.65 (CI 0.58-
171 0.72) and specificity was 0.64 (CI 0.57 0.69). The area under the curve (AUC) was 0.68 (CI 0.63-0.71),
172 thus the discriminative ability of the test to predict inpatient mortality was limited.

173

174 **DISCUSSION**

175

176 COVID-19 has a highly-variable severity, thus identifying patients at risk of more aggressive disease is
177 critical for triage and early management. While BMI, history of hypertension, and DM have been
178 aggressively evaluated, there are recent studies which have looked at rRT-PCR Ct as an indicator of
179 mortality or disease course.(10, 21) While it is difficult to utilize raw Ct values as a substitute for viral
180 burden without the production of an appropriate standard curve or normalization to an internal
181 housekeeping gene, attempts have been made to examine just this utility.(22) Previous studies which
182 have looked at Ct or viral loads for disease aggressiveness have found differing results, which may be
183 attributed to variability within the temporal course of infection.(10, 20, 23) Some studies have reported
184 that peak load of the virus in upper respiratory tract specimens was expected during early stages of
185 infection and in the pre-symptomatic stage, while others have found the peak to be approximately two
186 weeks after the onset of symptoms even extending into the 3rd or 4th week of illness.(24-26)

187 Zheng et al. described increased viral load in respiratory samples in patients with a more aggressive
188 disease course as compared to those with milder disease and therefore found that it could be used as a
189 possible indicator of prognosis.(25) Similar results have been reported by Liu et al.(27) This correlation
190 was not seen in relation to the viral load in stool samples.(25) Chen et al. reported that patients in the
191 intensive care unit (ICU) continued to remain positive for COVID-19 infection longer than those who

192 were not in the ICU.(28) Rao et al. in their systematic review of 18 studies reported an association
193 between the viral load (or cycle number) and clinical outcome.(17) There was only one among 18 studies
194 reviewed that looked at cycle number and mortality and found lower cycle number value associated
195 with increased risk of mortality.(17, 29) Our results demonstrate a similar pattern as we found Ct values
196 correlated inversely with mortality and low Ct increased the odds ratio for mortality compared to higher
197 Ct.

198 According to Rao et al. 73% of the studies which looked at Ct in hospitalized patients found an
199 association between Ct and disease aggressiveness, however, none of the studies which identified this
200 association involved non-hospitalized patients.(17) Argyropoulos et al. in their research did report higher
201 viral loads in non-hospitalized patients with an inverse relation between viral load and duration of
202 symptoms and its severity.(20) The available literature suggests that recruitment of hospitalized patients
203 might be a potential bias of analyzing the more severely ill among the overall infected population.
204 Argyropoulos et al. did not find any association between viral load and length of hospital stay.(20) Our
205 results also did not find any correlation with length of hospital stay for hospitalized patients.

206 Comparing our cohort of New York patients with findings by Magleby et al. it was noted that both
207 showed a statistically significant difference between age groups and the Ct.(10) However, we also noted
208 a difference related to male gender, which was not noted in their analysis.(10) Magleby et al. reported
209 that patients with high viral loads were at increased risk of myocardial infarction and acute kidney
210 injury.(10) We reached a similar inference regarding GFR and the Ct (viral load) showing that patient
211 with high viral load had poorer GFR. Rao et al. found elevated LDH corresponded to low cycle numbers
212 (higher viral load) and reported it as an important marker which showed consistent results in all the four
213 studies in which it was included.(17) LDH was significantly different between patients of the different Ct

214 quartiles in our study as well. Contrary to studies which have found ABO blood group as an indicator of
215 disease severity, we were not able to identify such a correlation.(30)

216 Our study suggests that Ct can be used as an independent indicator of mortality--this corroborates
217 previously reported data.(24) While Ct has been observed to be an important indicator of viral infection,
218 it is influenced by the assay used and factors that can affect the amplification efficiency.(30) While
219 studies like ours have helped identify independent markers which may in future help clinicians predict
220 outcome, we are still cautious about its reliability for several important reasons. Firstly, most studies,
221 including ours, have performed their analysis based on a single patient result. It is well understood that
222 the testing is greatly limited by the quality of sample and its associated collection. This variability might
223 be overcome through multiple patient sampling to improve the robustness of Ct as a tool. Additionally,
224 some studies have reported contrary results with respect to viral load and disease outcome which might
225 imply that the temporal relation of viral load and the Ct interpretation may depend on stage of
226 infection. Literature on Ct is also limited by the fact that studies have primarily focused on hospitalized
227 patients and the larger cohort of non-hospitalized patients and those with milder disease forms of
228 infection have not been analyzed thoroughly enough.

229 While our study included a large and diverse cohort of patients due to its geographical location, some of
230 the limitations included inability to analyze significance of race/ethnicity due to missing data from the
231 medical records. This study could not explore viral load in non-hospitalized patients, and mild or
232 asymptomatic patients were not initially swabbed due to hospital policy.

233 Ct-based risk stratification or interpretation is also limited by the absence of absolute or constant Ct cut-
234 off values. The Ct value ranges can vary widely by platform and are impacted by amplicon length, target
235 region, PCR cycling protocols, and other reaction conditions which alter the overall PCR efficiency even
236 when the same target gene is amplified.(4) Adopting the Ct value for clinical judgement is limited by the

237 scope of error due to multiple factors including interpretation by the examiner.(4) Additionally, since
238 testing is primarily upon nasopharyngeal swabs there is much greater variability from one collection to
239 another in addition to variability between patient disease states.(4) Therefore, even with our promising
240 results, the clinical applications of our findings would require further investigation to determine the
241 ultimate value of Ct interpretation.

242

243 **Conclusion:**

244 SARS-CoV-2 cycle threshold at admission was found to be an independent predictor of in-patient
245 mortality. However, further study is needed on how to best clinically utilize such information given the
246 result variation due to specimen quality, phase of disease, and the limited discriminative ability of the
247 test.

248

249

250

251 REFERENCES

252

- 253 1. Yuen KS, Ye ZW, Fung SY, Chan CP, Jin DY. SARS-CoV-2 and COVID-19: The most
254 important research questions. *Cell Biosci.* 2020;10:40.
- 255 2. Organization WH. 2020 [Available from: <https://covid19.who.int/>.
- 256 3. Al-Tawfiq JA, Leonardi R, Fasoli G, Rigamonti D. Prevalence and fatality rates of
257 COVID-19: What are the reasons for the wide variations worldwide? *Travel Med Infect Dis.*
258 2020;35:101711.
- 259 4. Chang MC, Hur J, Park D. Interpreting the COVID-19 Test Results: A Guide for
260 Psychiatrists. *Am J Phys Med Rehabil.* 2020;99(7):583-5.
- 261 5. Deming ME, Chen WH. COVID-19 and Lessons to Be Learned from Prior Coronavirus
262 Outbreaks. *Ann Am Thorac Soc.* 2020;17(7):790-4.
- 263 6. Richardson S, Hirsch JS, Narasimhan M, Crawford JM, McGinn T, Davidson KW, et al.
264 Presenting Characteristics, Comorbidities, and Outcomes Among 5700 Patients Hospitalized
265 With COVID-19 in the New York City Area. *JAMA.* 2020.
- 266 7. Goyal P, Choi JJ, Pinheiro LC, Schenck EJ, Chen R, Jabri A, et al. Clinical
267 Characteristics of Covid-19 in New York City. *N Engl J Med.* 2020;382(24):2372-4.

- 268 8. Cummings MJ, Baldwin MR, Abrams D, Jacobson SD, Meyer BJ, Balough EM, et al.
269 Epidemiology, clinical course, and outcomes of critically ill adults with COVID-19 in New York
270 City: a prospective cohort study. *Lancet*. 2020;395(10239):1763-70.
- 271 9. Argenziano MG, Bruce SL, Slater CL, Tiao JR, Baldwin MR, Barr RG, et al.
272 Characterization and clinical course of 1000 patients with coronavirus disease 2019 in New
273 York: retrospective case series. *BMJ*. 2020;369:m1996.
- 274 10. Magleby R, Westblade LF, Trzebucki A, Simon MS, Rajan M, Park J, et al. Impact of
275 SARS-CoV-2 Viral Load on Risk of Intubation and Mortality Among Hospitalized Patients with
276 Coronavirus Disease 2019. *Clin Infect Dis*. 2020.
- 277 11. Tan L, Wang Q, Zhang D, Ding J, Huang Q, Tang YQ, et al. Lymphopenia predicts
278 disease severity of COVID-19: a descriptive and predictive study. *Signal Transduct Target Ther*.
279 2020;5(1):33.
- 280 12. Kermali M, Khalsa RK, Pillai K, Ismail Z, Harky A. The role of biomarkers in diagnosis of
281 COVID-19 - A systematic review. *Life Sci*. 2020;254:117788.
- 282 13. Yu B, Li X, Chen J, Ouyang M, Zhang H, Zhao X, et al. Evaluation of variation in D-dimer
283 levels among COVID-19 and bacterial pneumonia: a retrospective analysis. *J Thromb*
284 *Thrombolysis*. 2020.
- 285 14. Schiffrin EL, Flack JM, Ito S, Muntner P, Webb RC. Hypertension and COVID-19. *Am J*
286 *Hypertens*. 2020;33(5):373-4.
- 287 15. Hussain A, Bhowmik B, do Vale Moreira NC. COVID-19 and diabetes: Knowledge in
288 progress. *Diabetes Res Clin Pract*. 2020;162:108142.
- 289 16. Singh AK, Gupta R, Ghosh A, Misra A. Diabetes in COVID-19: Prevalence,
290 pathophysiology, prognosis and practical considerations. *Diabetes Metab Syndr*.
291 2020;14(4):303-10.
- 292 17. Rao SN, Manissero D, Steele VR, Pareja J. A Narrative Systematic Review of the
293 Clinical Utility of Cycle Threshold Values in the Context of COVID-19. *Infect Dis Ther*. 2020.
- 294 18. Kawase J, Asakura H, Kurosaki M, Oshiro H, Etoh Y, Ikeda T, et al. Rapid and Accurate
295 Diagnosis Based on Real-Time PCR Cycle Threshold Value for the Identification of
296 *Campylobacter jejuni*, *astA* Gene-Positive *Escherichia coli*, and *eae* Gene-Positive *E. coli*. *Jpn J*
297 *Infect Dis*. 2018;71(1):79-84.
- 298 19. Feikin DR, Fu W, Park DE, Shi Q, Higdon MM, Baggett HC, et al. Is Higher Viral Load in
299 the Upper Respiratory Tract Associated With Severe Pneumonia? Findings From the PERCH
300 Study. *Clin Infect Dis*. 2017;64(suppl_3):S337-S46.
- 301 20. Argyropoulos KV, Serrano A, Hu J, Black M, Feng X, Shen G, et al. Association of Initial
302 Viral Load in Severe Acute Respiratory Syndrome Coronavirus 2 (SARS-CoV-2) Patients with
303 Outcome and Symptoms. *Am J Pathol*. 2020.
- 304 21. Pujadas E, Chaudhry F, McBride R, Richter F, Zhao S, Wajnberg A, et al. SARS-CoV-2
305 viral load
306 predicts COVID-19
307 mortality. *Lancet Respir Med* 2020. 2020;S2213-2600(20):30354-4
- 308 22. Aquino-Jarquín G. The raw Ct values from RT-PCR detection are not viral load
309 quantitation units. *Clin Infect Dis*. 2020.
- 310 23. To KK, Tsang OT, Leung WS, Tam AR, Wu TC, Lung DC, et al. Temporal profiles of
311 viral load in posterior oropharyngeal saliva samples and serum antibody responses during
312 infection by SARS-CoV-2: an observational cohort study. *Lancet Infect Dis*. 2020;20(5):565-74.
- 313 24. Zou L, Ruan F, Huang M, Liang L, Huang H, Hong Z, et al. SARS-CoV-2 Viral Load in
314 Upper Respiratory Specimens of Infected Patients. *N Engl J Med*. 2020;382(12):1177-9.
- 315 25. Zheng S, Fan J, Yu F, Feng B, Lou B, Zou Q, et al. Viral load dynamics and disease
316 severity in patients infected with SARS-CoV-2 in Zhejiang province, China, January-March
317 2020: retrospective cohort study. *BMJ*. 2020;369:m1443.

- 318 26. He X, Lau EHY, Wu P, Deng X, Wang J, Hao X, et al. Temporal dynamics in viral
319 shedding and transmissibility of COVID-19. *Nat Med.* 2020;26(5):672-5.
320 27. Liu Y, Yang Y, Zhang C, Huang F, Wang F, Yuan J, et al. Clinical and biochemical
321 indexes from 2019-nCoV infected patients linked to viral loads and lung injury. *Sci China Life*
322 *Sci.* 2020;63(3):364-74.
323 28. Chen J, Qi T, Liu L, Ling Y, Qian Z, Li T, et al. Clinical progression of patients with
324 COVID-19 in Shanghai, China. *J Infect.* 2020;80(5):e1-e6.
325 29. Huang JT, Ran RX, Lv ZH, Feng LN, Ran CY, Tong YQ, et al. Chronological Changes of
326 Viral Shedding in Adult Inpatients with COVID-19 in Wuhan, China. *Clin Infect Dis.* 2020.
327 30. Bustin SA, Mueller R. Real-time reverse transcription PCR (qRT-PCR) and its potential
328 use in clinical diagnosis. *Clin Sci (Lond).* 2005;109(4):365-79.
329

330 FIGURE CAPTIONS

331 **Figure 1.** Study Cohort

332 **Figure 2.** Correlation Matrix. On top is the (absolute) value of the Kendall correlation, the
333 Asterix indicates degree of statistical significance: * $p < 0.05$, ** $p < 0.01$, *** $p < 0.001$. On
334 bottom, there are bivariate scatterplots, with a linear regression line.

335 **Figure 3.** Stacked bar graph of Mortality by PCR Cycle Quartile and Age group. *Fisher's exact
336 test used.

337
338 **Figure 4.** Cycle Number and Mortality by Age and Gender

339 **Figure 5.** Cumulative Incidence function of COVID-19 Mortality vs Discharge by Initial
340 COVID PCR Quartile

341
342 **Figure 6.** Scatterplot of averaged value of repeated samples versus absolute cycle number
343 difference between replicates. The solid line indicates the mean absolute replicate difference, and
344 the dashed line marks 2 standard deviations from the mean.

345 **Figure 7. (Panel A):** Receiver Operating characteristic (ROC) curve of Inpatient Mortality by
346 Cycle Threshold value; **(Panel B):** Density plot of Bootstrapped Youden's index cutoffs (1500
347 replications); **(Panel C):** Sensitivity and Specificity Plot of Mortality by PCR Threshold value

348

349

350

351

352

353

354

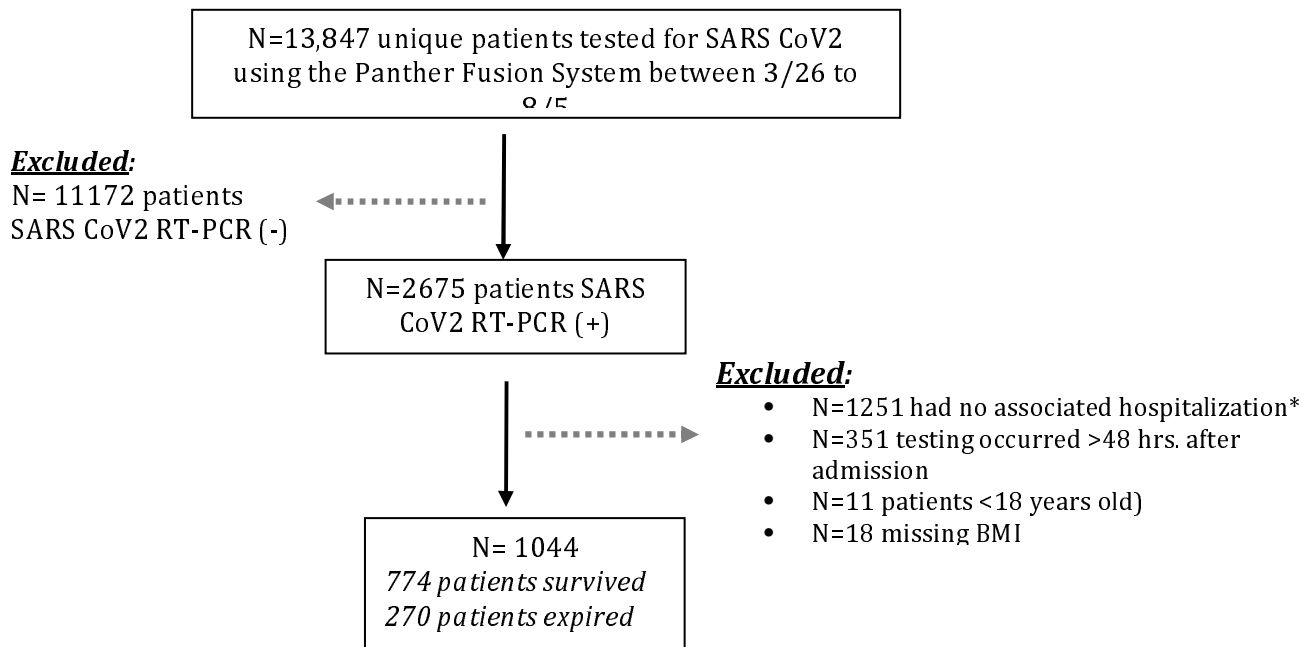
355

356

357

358
359
360
361
362
363
364
365
366
367
368
369
370
371
372
373
374
375
376
377
378
379
380
381
382
383
384
385
386
387
388
389
390
391

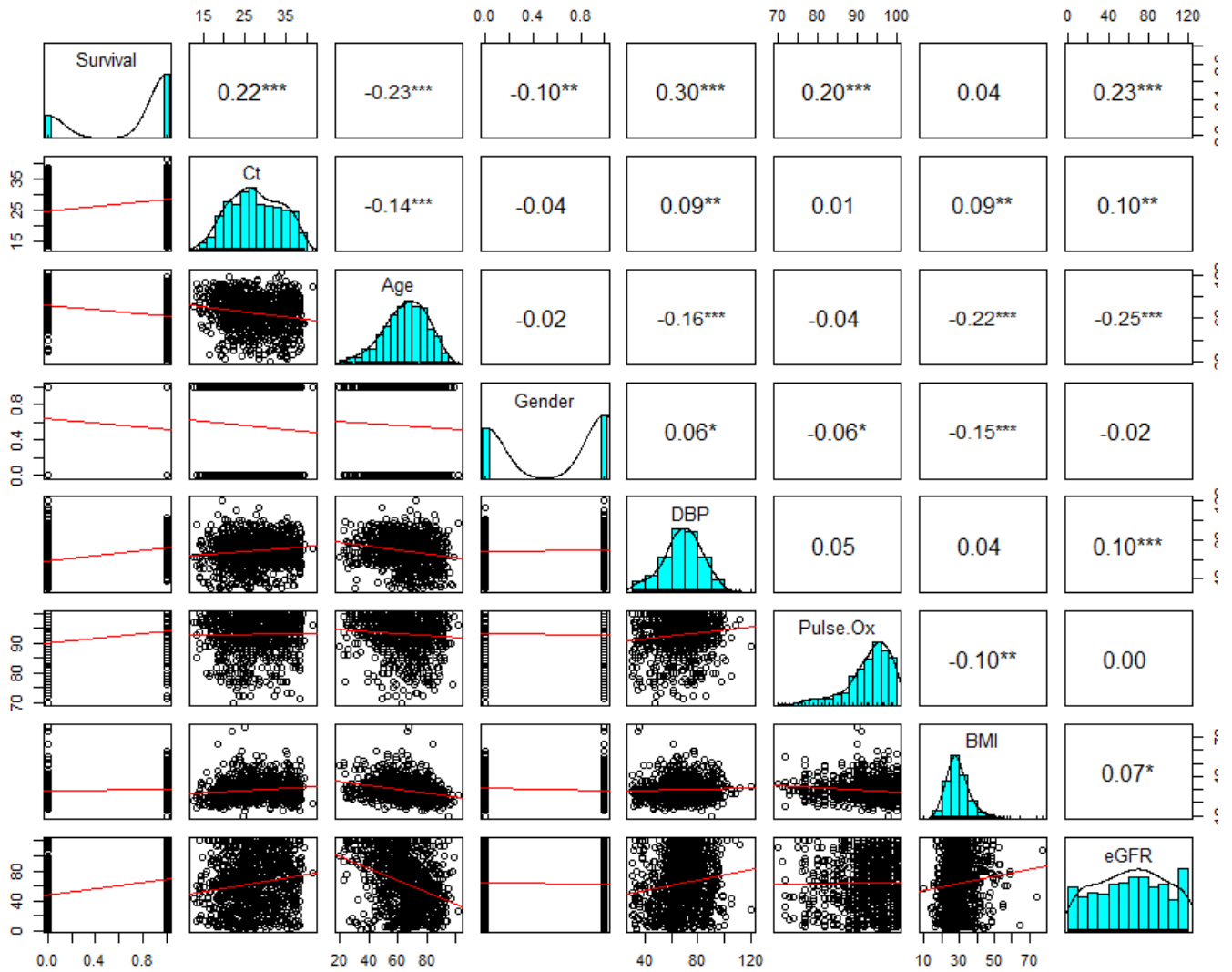
Figure 1. Study Cohort



*Associated visit is defined as SARS CoV2 test collected during Admission or within 4 days prior to admission

392
393
394
395
396
397
398
399
400
401
402

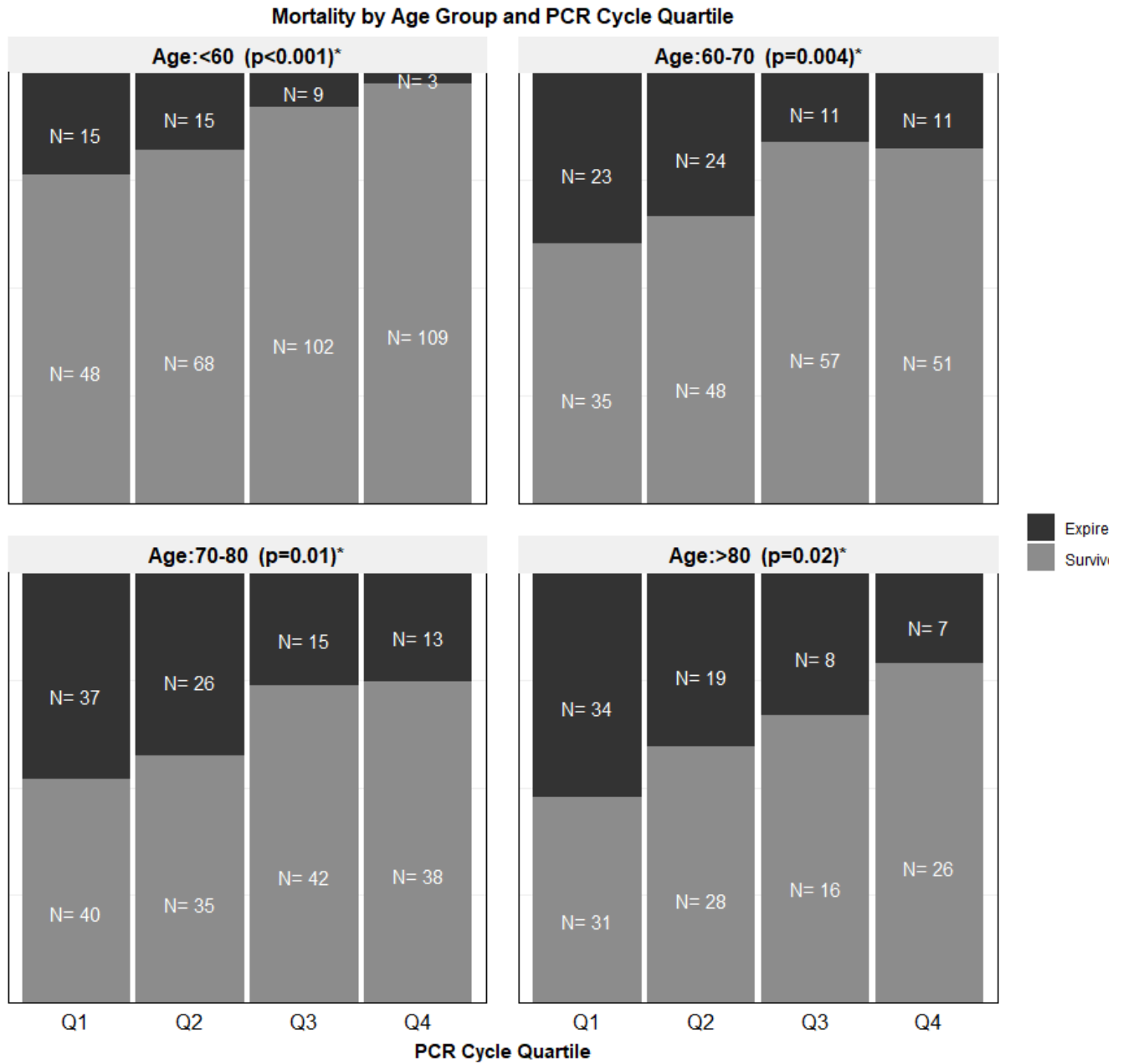
Figure 2. Correlation Matrix. On top is the (absolute) value of the Kendall correlation, the Asterisk indicates degree of statistical significance: * $p < 0.05$, ** $p < 0.01$, *** $p < 0.001$. On bottom, there are bivariate scatterplots, with a linear regression line.



403
404
405

406
407
408
409
410
411
412
413
414
415
416
417

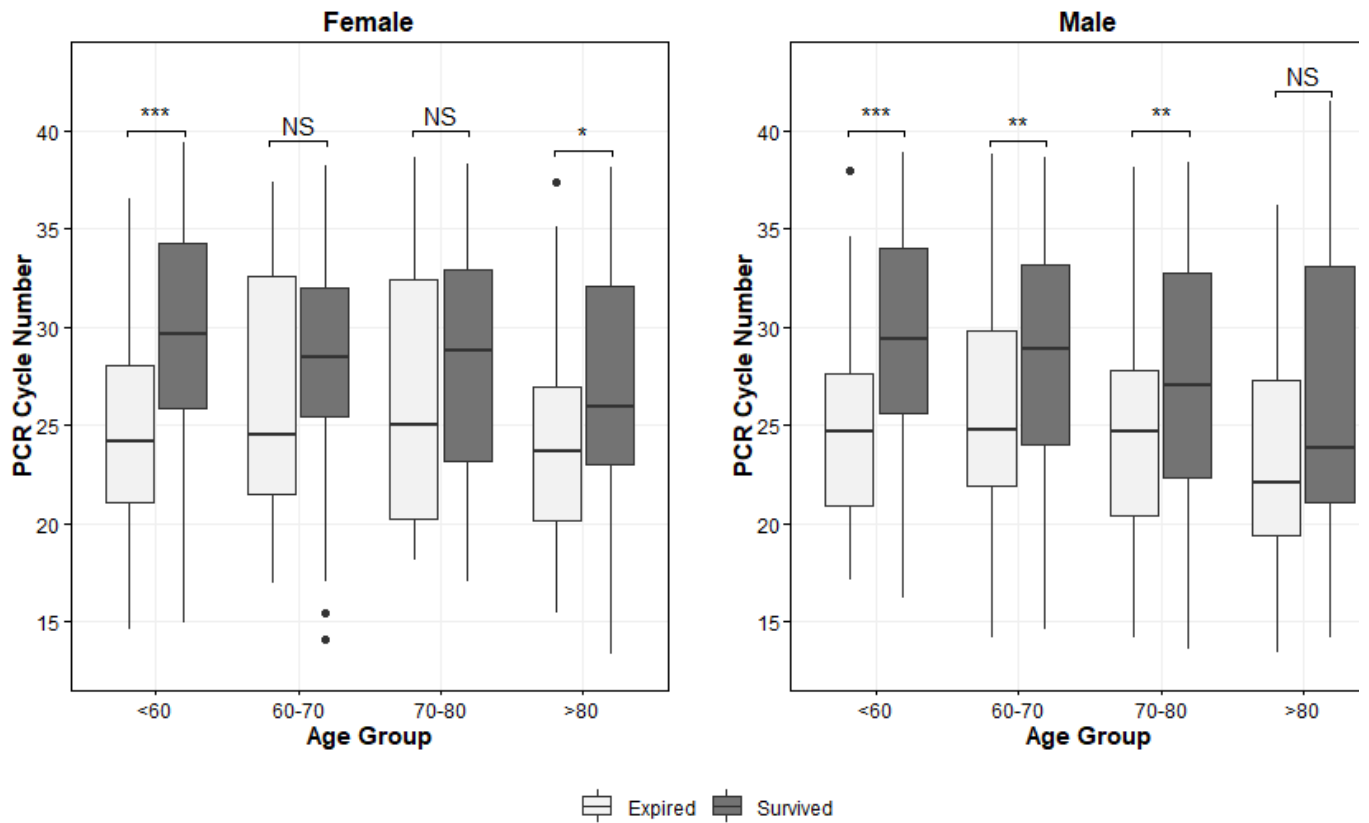
Figure 3. Stacked bar graph of Mortality by PCR Cycle Quartile and Age group. *Fisher’s exact test used.



418
419
420
421
422
423
424
425
426
427

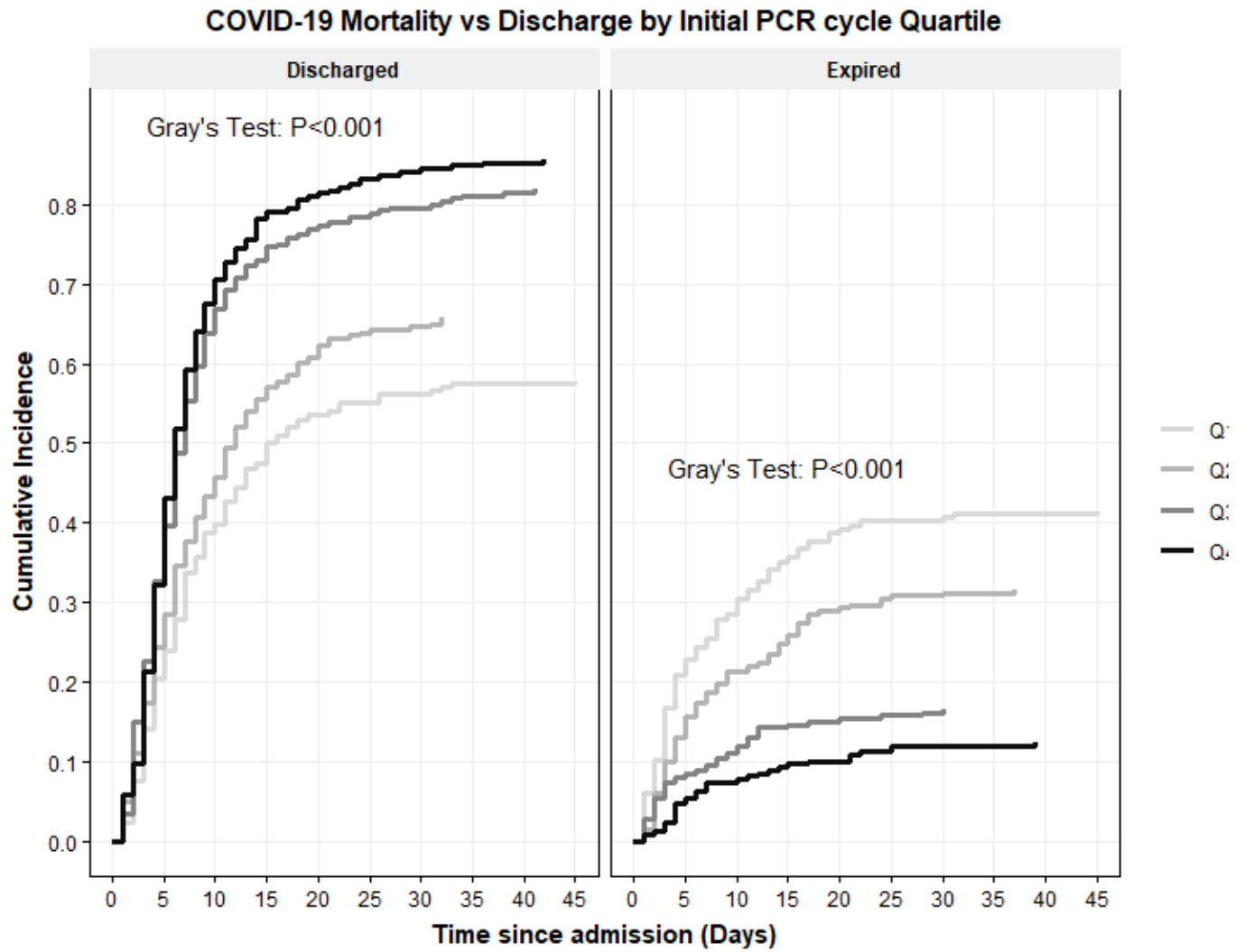
Figure 4. Cycle Number and Mortality by Age and Gender

COVID PCR Cycle Number and Mortality by Age and Gender



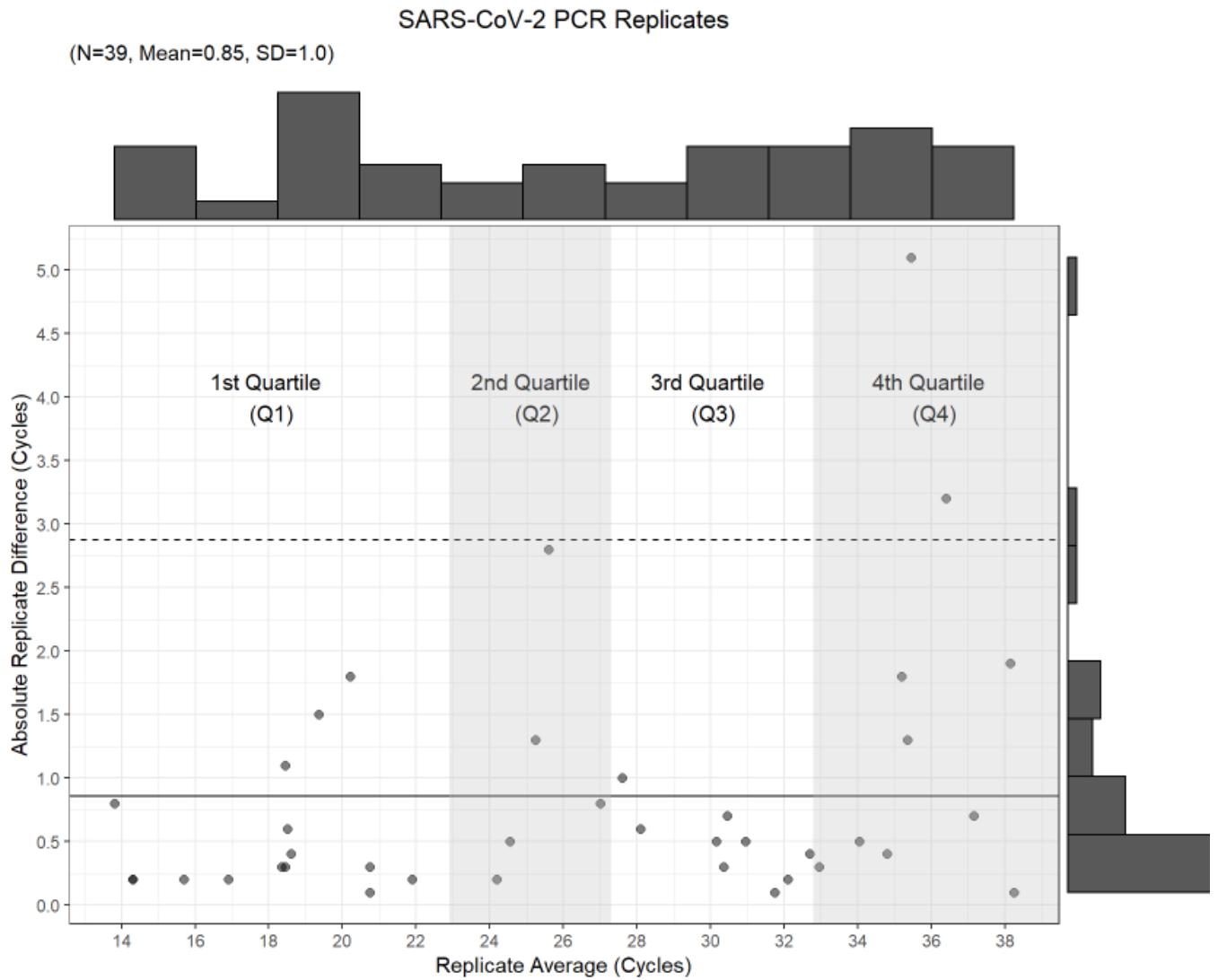
428
429
430
431
432
433
434
435
436
437
438
439
440
441
442
443
444
445
446
447

448 **Figure 5.** Cumulative Incidence function of COVID-19 Mortality vs Discharge by Initial
449 COVID PCR Quartile



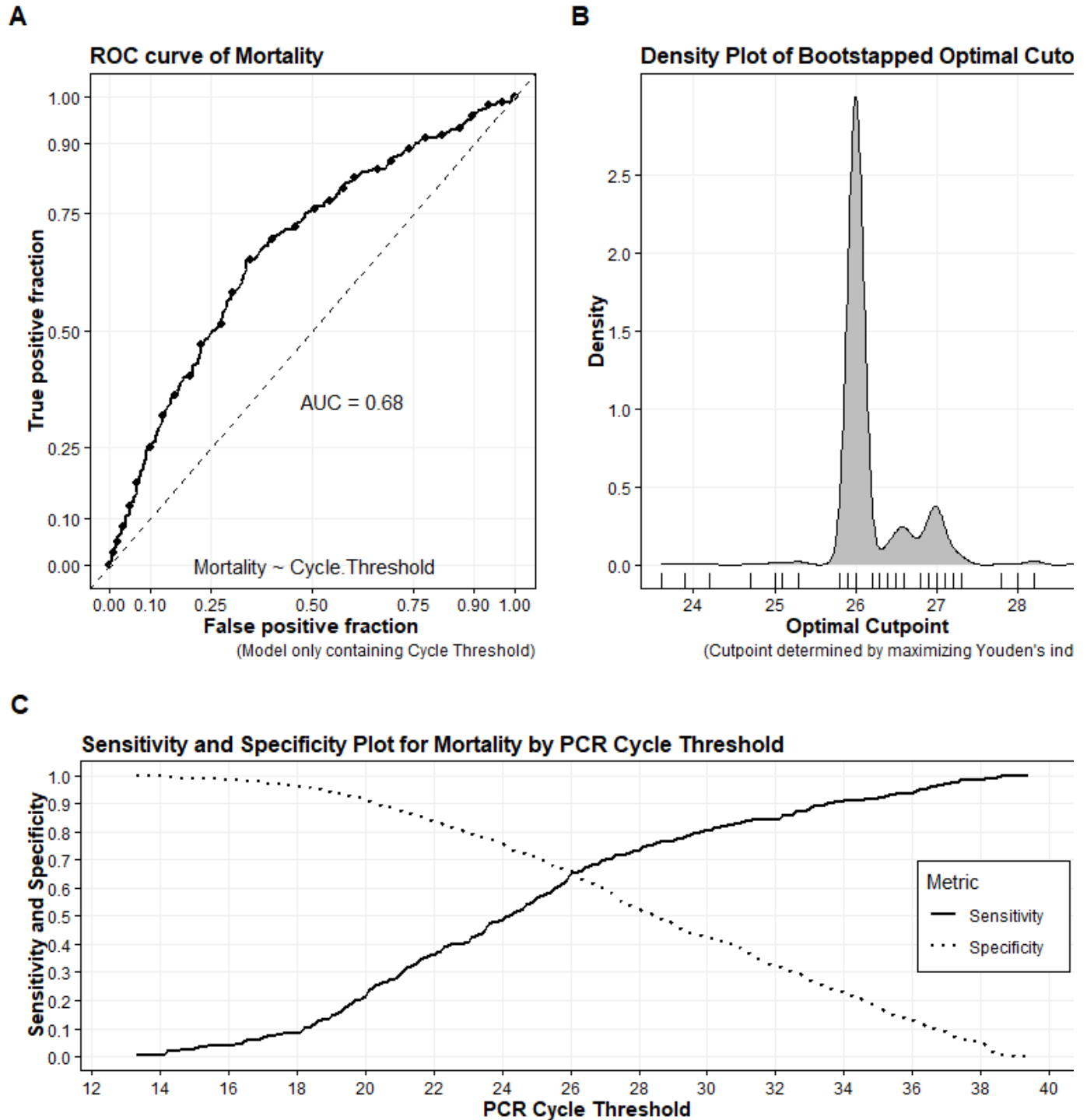
450
451
452
453
454
455
456
457
458
459
460
461
462
463
464
465
466

467 **Figure 6.** Scatterplot of averaged value of repeated samples versus absolute cycle number
468 difference between replicates. The solid line indicates the mean absolute replicate difference, and
469 the dashed line marks 2 standard deviations from the mean.



470
471
472
473
474
475
476
477
478
479
480
481
482

483 **Figure 7. (Panel A):** Receiver Operating characteristic (ROC) curve of Inpatient Mortality by
484 Cycle Threshold value; **(Panel B):** Density plot of Bootstrapped Youden's index cutoffs (1500
485 replications); **(Panel C):** Sensitivity and Specificity Plot of Mortality by PCR Threshold value
486



487
488
489
490

491 **SUPPLEMENTARY MATERIAL**

492

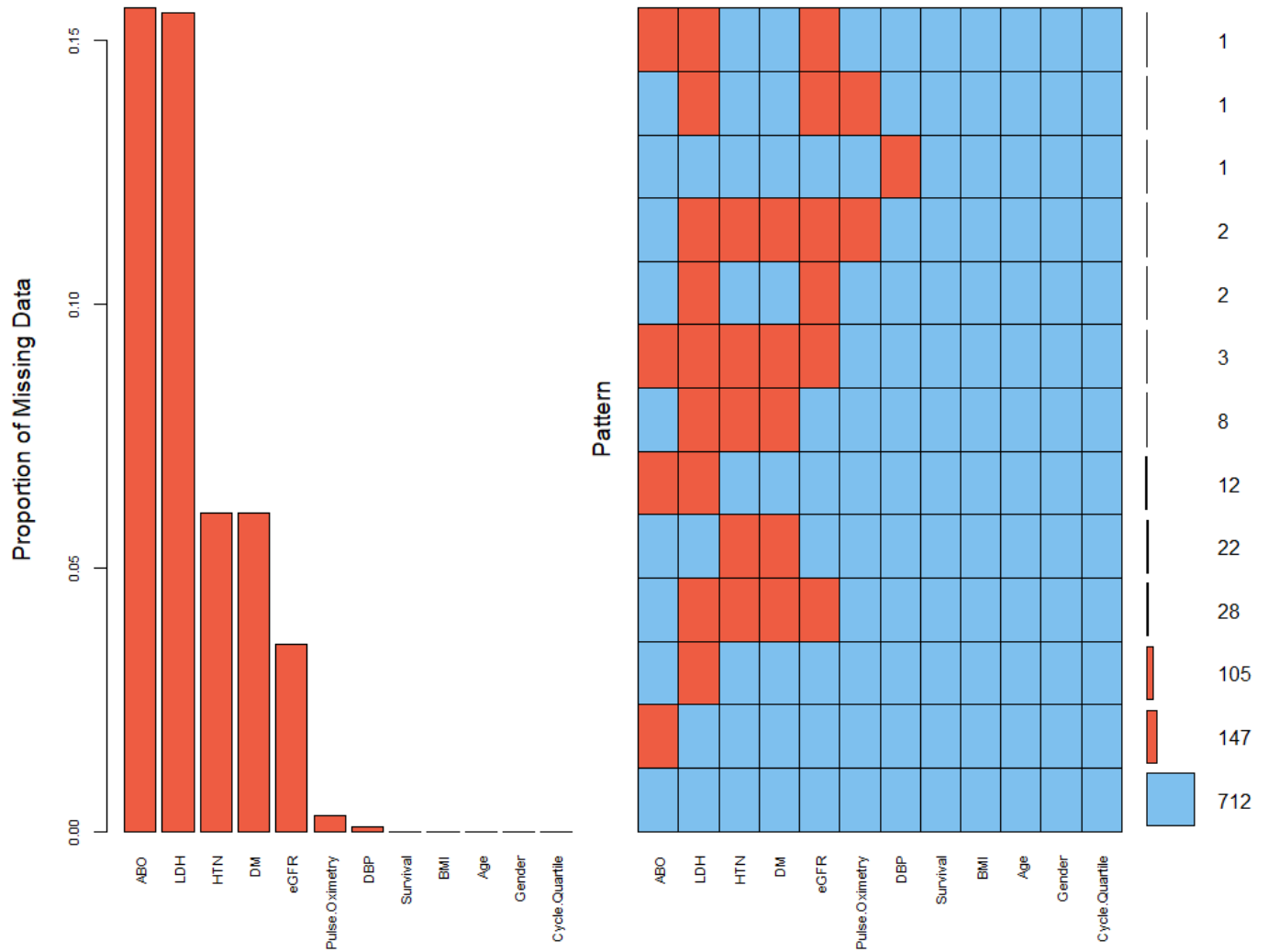
493

494 **S1. (Left Panel):** Barchart of the proportions of missing values. **(Right Panel):** all existing
495 combinations of missing values (Red) and non-missing values (Blue) with the pattern frequency
496 represented by small horizontal bars with the number involved indicated.

497

498

499



500

501

502

503

504

505

506

507

508

509

510
511
512
513
514

S2. Sensitivity Analysis: examining the effect of selected time period on model results. Time period has been divided into quarters based on PCR testing totals

<i>Predictors</i>	Period 1			Period 2			Period 3			Period 4		
	<i>Odds Ratio</i> <i>s</i>	<i>CI</i>	<i>p</i>	<i>Odds Ratio</i> <i>s</i>	<i>CI</i>	<i>p</i>	<i>Odds Ratio</i> <i>s</i>	<i>CI</i>	<i>p</i>	<i>Odds Ratio</i> <i>s</i>	<i>CI</i>	<i>p</i>
(Intercept)	0.13	0.01 – 1.60	0.11 1	0.04	0.00 – 0.81	0.036	0	0.00 – 0.05	<0.001	0.04	0.00 – 0.70	0.028
Age	1.03	1.01 – 1.05	0.003	1.05	1.02 – 1.08	<0.001	1.08	1.05 – 1.11	<0.001	1.06	1.03 – 1.09	<0.001
Gender [M]	1.18	0.67 – 2.10	0.56 8	2.67	1.36 – 5.26	0.005	2.55	1.30 – 5.00	0.006	1.71	0.89 – 3.30	0.108
BMI	1.01	0.97 – 1.05	0.71 3	1.04	0.99 – 1.09	0.12	1.08	1.03 – 1.14	0.003	1.03	0.99 – 1.07	0.102
Cycle Threshold	0.95	0.90 – 1.00	0.05 3	0.9	0.85 – 0.95	<0.001	0.91	0.86 – 0.96	0.001	0.9	0.85 – 0.94	<0.001
Observations	261			261			261			261		

515
516
517
518
519
520
521
522
523
524
525
526
527
528
529
530
531
532
533
534
535
536
537
538
539
540
541
542

543

544

545 **S3. Sensitivity Analysis: examining the effect of covariate selection on study findings**

<i>Predictors</i>	Model 1			Model 2			Model 3			Model 4			Model 5		
	<i>O</i> <i>R</i>	<i>CI</i>	<i>p</i>	<i>O</i> <i>R</i>	<i>CI</i>	<i>p</i>	<i>O</i> <i>R</i>	<i>CI</i>	<i>p</i>	<i>O</i> <i>R</i>	<i>CI</i>	<i>p</i>	<i>O</i> <i>R</i>	<i>CI</i>	<i>p</i>
Cycle Threshold	0 9 1	0.87 – 0.95	<0 .0 01	0 9 1	0.88 – 0.95	<0 .0 01	0 9 1	0.87 – 0.94	<0 .0 01	0 9 2	0.89 – 0.95	<0 .0 01	0 9 1	0.89 – 0.94	<0 .0 01
Age	1 0 4	1.01 – 1.06	0. 00 2	1 0 4	1.02 – 1.06	<0 .0 01	1. 0 5	1.03 – 1.07	<0 .0 01	1. 0 4	1.02 – 1.05	<0 .0 01	1. 0 3	1.02 – 1.05	<0 .0 01
Gender [M]	2 2 6	1.30 – 3.94	0. 00 4	2 0 1	1.27 – 3.20	0. 00 3	2. 0 8	1.34 – 3.23	0. 00 1	2. 0 8	1.40 – 3.09	<0 .0 01	1. 9 2	1.33 – 2.79	0. 00 1
BMI	1 0 3	0.99 – 1.07	0. 14 1	1 0 2	0.99 – 1.06	0. 18 7	1. 0 3	1.00 – 1.06	0. 07 3	1. 0 4	1.01 – 1.07	0. 01 8	1. 0 3	1.00 – 1.05	0. 06 2
Pulse Ox	0 9 4	0.90 – 0.98	0. 00 3	0 9 4	0.90 – 0.97	0. 00 1	0. 9 2	0.89 – 0.96	<0 .0 01	0. 9 9	0.87 – 0.93	<0 .0 01	0. 9 9	0.87 – 0.93	<0 .0 01
DBP	0 9 4	0.92 – 0.96	<0 .0 01	0 9 3	0.92 – 0.95	<0 .0 01	0. 9 4	0.92 – 0.95	<0 .0 01	0. 9 4	0.93 – 0.96	<0 .0 01	0. 9 4	0.93 – 0.96	<0 .0 01
eGFR	0 9 9	0.98 – 1.00	0. 06 7	0 9 9	0.98 – 1.00	0. 03 1	0. 9 9	0.98 – 1.00	0. 01 3	0. 9 9	0.98 – 0.99	<0 .0 01	0. 9 9	0.98 – 0.99	<0 .0 01
HTN [Yes]	0 7 1	0.38 – 1.33	0. 28 2	0 8 4	0.49 – 1.45	0. 53 8	0. 8 1	0.49 – 1.32	0. 39 1	0. 9 2	0.59 – 1.43	0. 70 6	1. 0 1	0.66 – 1.53	0. 96 4
DM [Yes]	1 8 2	1.05 – 3.14	0. 03 3	1 6 7	1.05 – 2.66	0. 03 1	1. 7 7	1.09 – 2.65	0. 01 9	1. 2 8	0.86 – 1.89	0. 22 2	1. 3 3	0.92 – 1.93	0. 12 9
NLR	1 0 4	1.01 – 1.08	0. 00 9	1 0 4	1.01 – 1.07	0. 00 7	1. 0 4	1.01 – 1.07	0. 00 8	1. 0 3	1.01 – 1.06	0. 01 8	1. 0 3	1.01 – 1.06	0. 00 8
Troponin	1 4 6	0.54 – 3.98	0. 45 8	1 3 8	0.52 – 3.65	0. 51 8	1. 5 3	0.51 – 4.59	0. 44 6	1. 9 9	0.66 – 6.04	0. 22 3			
LDH	1	1.00	0. 03	1	1.00	<0 .0	1	1.00	<0 .0	1	1.00	<0 .0			
ABO	1	1.00	0. 07	1	1.00	0. 01	1	1.00	0. 01						

It is made available under a [CC-BY-ND 4.0 International license](https://creativecommons.org/licenses/by-nd/4.0/) .

546
547
548
549
550
551
552
553
554
555
556
557
558
559
560
561
562
563
564
565
566
567
568
569
570
571
572
573
574
575
576
577
578
579
580
581
582
583
584
585
586
587
588
589
590
591
592
593
594
595
596
597
598
599
600

[AB]	.	-	89	.	-	95			
	0	3.73	2	0	3.31	5			
	9			3					
	0	0.29	0.	0	0.43	0.			
ABO	.	-	22	.	-	54			
[B]	6	1.35	8	8	1.56	4			
	2			2					
	0	0.27	0.	0	0.34	0.			
ABO	.	-	01	.	-	02			
[O]	4	0.87	5	5	0.94	7			
	8			6					
	1	1.02	0.						
Ddimer	.	-	00						
	0		5						
	7	1.12							
Observations		529		656	791	881	974		
R² Tjur		0.434		0.419	0.422	0.376	0.367		
AIC		414.49		533.21	596.58	720.259	798.314		

601 **S4. Sensitivity Analysis: examining the effect of covariate selection on study findings.**

602
603
604
605
606
607

Predictors	Model 6			Model 7			Model 8			Model 9			Model 10		
	OR	CI	p	OR	CI	p	OR	CI	p	OR	CI	p	OR	CI	p
Cycle Threshold	0.91	0.89 – 0.94	<0.001	0.91	0.89 – 0.94	<0.001	0.92	0.89 – 0.95	<0.001	0.91	0.89 – 0.94	<0.001	0.91	0.88 – 0.93	<0.001
Age	1.03	1.02 – 1.05	<0.001	1.03	1.01 – 1.04	<0.001	1.03	1.02 – 1.05	<0.001	1.04	1.03 – 1.05	<0.001	1.05	1.04 – 1.06	<0.001
Gender [M]	2.01	1.39 – 2.91	<0.001	2.01	1.39 – 2.90	<0.001	2.01	1.40 – 2.90	<0.001	2.1	1.47 – 3.01	<0.001	1.79	1.28 – 2.48	0.001
BMI	1.02	0.99 – 1.05	0.141	1.02	0.99 – 1.05	0.123	1.02	0.99 – 1.05	0.121	1.02	1.00 – 1.05	0.114	1.02	1.00 – 1.04	0.072
Pulse Ox	0.89	0.87 – 0.92	<0.001	0.89	0.87 – 0.92	<0.001	0.89	0.87 – 0.92	<0.001	0.89	0.87 – 0.92	<0.001	0.89	0.87 – 0.92	<0.001
DBP	0.94	0.93 – 0.96	<0.001	0.94	0.93 – 0.96	<0.001	0.94	0.93 – 0.95	<0.001	0.94	0.93 – 0.95	<0.001	0.94	0.93 – 0.95	<0.001
eGFR	0.99	0.98 – 0.99	<0.001	0.99	0.98 – 0.99	<0.001	0.99	0.98 – 0.99	<0.001	0.99	0.98 – 0.99	<0.001	0.99	0.98 – 0.99	<0.001
HTN [Yes]	0.99	0.66 – 1.50	0.971	1.07	0.72 – 1.60	0.736									
DM [Yes]	1.31	0.91 – 1.90	0.146												
Observations	976			976			1006			1040			1041		
R ² Tjur	0.36			0.358			0.355			0.341			0.225		
AIC	808.416			808.527			825.485			857.24			968.337		

608
609
610

It is made available under a [CC-BY-ND 4.0 International license](#) .

611
612
613
614
615
616
617
618
619
620
621
622
623
624
625
626