

1 *Original research article*

2 **Predicting clinical outcome with phenotypic clusters in COVID-19 pneumonia:**  
3 **an analysis of 12,066 hospitalized patients from the Spanish registry**  
4 **SEMI-COVID-19.**

5 Manuel Rubio-Rivas MD PhD <sup>1\*</sup>, Xavier Corbella MD PhD <sup>1,2\*\*</sup>, José María Mora-Luján MD <sup>1</sup>, Jose  
6 Loureiro Amigo MD <sup>3</sup>, Almudena López Sampalo MD <sup>4</sup>, Carmen Yera Bergua MD <sup>5</sup>, Pedro Jesús  
7 Esteve Atiénzar MD PhD <sup>6</sup>, Luis Felipe Díez García MD <sup>7</sup>, Ruth Gonzalez Ferrer MD <sup>8</sup>, Susana Plaza  
8 Canteli MD <sup>9</sup>, Antía Pérez Piñeiro MD <sup>10</sup>, Begoña Cortés Rodríguez MD <sup>11</sup>, Leyre Jorquer Vidal MD <sup>12</sup>,  
9 Ignacio Pérez Catalán MD <sup>13</sup>, Marta Leon Tellez MD <sup>14</sup>, José Ángel Martín Oterino MD <sup>15</sup>, María  
10 Candelaria Martín González MD <sup>16</sup>, José Luis Serrano Carrillo de Albornoz MD <sup>17</sup>, Eva Garcia Sardon  
11 MD <sup>18</sup>, José Nicolás Alcalá Pedrajas MD <sup>19</sup>, Anabel Martin-Urda Diez-Canseco MD <sup>20</sup>, M<sup>a</sup> José Esteban  
12 Giner MD <sup>21</sup>, Pablo Tellería Gómez MD <sup>22</sup>, Ricardo Gómez-Huelgas MD PhD <sup>23</sup>, José Manuel  
13 Ramos-Rincón MD PhD <sup>24</sup> ; for the SEMI-COVID-19 Network<sup>\*\*\*</sup>.

14

15 Affiliation 1: Department of Internal Medicine, Bellvitge University Hospital, Bellvitge Biomedical  
16 Research Institute-IDIBELL, University of Barcelona, Barcelona, Spain;  
17 [mrubio@bellvitgehospital.cat](mailto:mrubio@bellvitgehospital.cat), [xcorbella@bellvitgehospital.cat](mailto:xcorbella@bellvitgehospital.cat), [jmora@bellvitgehospital.cat](mailto:jmora@bellvitgehospital.cat)

18 Affiliation 2: Group of Evaluation of Health Determinants and Health Policies, Hestia Chair in  
19 Integrated Health and Social Care, School of Medicine, Universitat Internacional de Catalunya,  
20 Barcelona, Spain; [xcorbella@bellvitgehospital.cat](mailto:xcorbella@bellvitgehospital.cat)

21 Affiliation 3: Internal Medicine Department, Moisès Broggi Hospital, Sant Joan Despí, Barcelona,  
22 Spain; [ahores@gmail.com](mailto:ahores@gmail.com)

23 Affiliation 4: Internal Medicine Department, Regional University Hospital of Málaga, Málaga, Spain;  
24 [almu\\_540@hotmail.com](mailto:almu_540@hotmail.com)

25 Affiliation 5: Internal Medicine Department, Virgen de la Salud Hospital, Toledo, Spain;  
26 [mamenyera@hotmail.com](mailto:mamenyera@hotmail.com)

27 Affiliation 6: Internal Medicine Department, San Juan de Alicante University Hospital, San Juan de  
28 Alicante (Alicante), Spain; [pedroesteve82@gmail.com](mailto:pedroesteve82@gmail.com)

29 Affiliation 7: Internal Medicine Department, Torrecárdenas Hospital, Almería, Spain;  
30 [lfdiez@telefonica.net](mailto:lfdiez@telefonica.net)

31 Affiliation 8: Internal Medicine Department, Tajo Hospital, Aranjuez (Madrid), Spain;  
32 [ruthgferrer@gmail.com](mailto:ruthgferrer@gmail.com)

33 Affiliation 9: Internal Medicine Department, Severo Ochoa University Hospital, Leganés (Madrid),  
34 Spain; [susana.plaza@salud.madrid.org](mailto:susana.plaza@salud.madrid.org)

35 Affiliation 10: Internal Medicine Department, Valle del Nalón Hospital, Riaño (Langreo, Asturias),  
36 Spain; [antia.perez.pineiro@gmail.com](mailto:antia.perez.pineiro@gmail.com)

37 Affiliation 11: Internal Medicine Department, Alto Guadalquivir Hospital, Andújar (Jaén), Spain;  
38 [bcortes@ephag.es](mailto:bcortes@ephag.es)

39 Affiliation 12: Internal Medicine Department, Francesc de Borja Hospital, Gandia (Valencia), Spain;  
40 [leyrjorvi@gmail.com](mailto:leyrjorvi@gmail.com)

41 Affiliation 13: Internal Medicine Department, Castellón General University Hospital, Castellón de la  
42 **NOTE: This preprint reports new research that has not been certified by peer review and should not be used to guide clinical practice.**  
Plana, Spain; [nachocs13@gmail.com](mailto:nachocs13@gmail.com)

43 Affiliation 14: Internal Medicine Department, Santa Bárbara Hospital, Soria, Spain;  
44 [mleont@saludcastillayleon.es](mailto:mleont@saludcastillayleon.es)

45 Affiliation 15: Internal Medicine Department, Salamanca University Hospital Complex, Salamanca,  
46 Spain; [jmoterino@saludcastillayleon.es](mailto:jmoterino@saludcastillayleon.es)

47 Affiliation 16: Internal Medicine Department, Canarias University Hospital, Santa Cruz de Tenerife,  
48 Spain; [candemartin1983@gmail.com](mailto:candemartin1983@gmail.com)

49 Affiliation 17: Internal Medicine Department, Poniente Hospital, Almería, Spain;  
50 [jserranocarrillo@hotmail.com](mailto:jserranocarrillo@hotmail.com)

51 Affiliation 18: Internal Medicine Department, San Pedro de Alcántara Hospital, Cáceres, Spain;  
52 [evagsardon@gmail.com](mailto:evagsardon@gmail.com)

53 Affiliation 19: Internal Medicine Department, Pozoblanco Hospital, Pozoblanco (Córdoba), Spain;  
54 [jnalcala58@hotmail.com](mailto:jnalcala58@hotmail.com)

55 Affiliation 20: Internal Medicine Department, Palamós Hospital, Palamós (Girona), Spain;  
56 [anabelmartinurda10canseco@gmail.com](mailto:anabelmartinurda10canseco@gmail.com)

57 Affiliation 21: Internal Medicine Department, Virgen de los Lirios Hospital, Alcoy (Alicante), Spain;  
58 [mestebanginer@gmail.com](mailto:mestebanginer@gmail.com)

59 Affiliation 22: Internal Medicine Department, Valladolid Clinical University Hospital, Valladolid,  
60 Spain; [pablotelleria92@gmail.com](mailto:pablotelleria92@gmail.com)

61 Affiliation 23: Internal Medicine Department, Regional University Hospital of Málaga. Instituto de  
62 Investigación Biomédica de Málaga (IBIMA), Malaga, Spain; [ricardogomezhueltas@hotmail.com](mailto:ricardogomezhueltas@hotmail.com)

63 Affiliation 24: Department of Clinical Medicine, Miguel Hernandez University of Elche (Alicante),  
64 Spain; [jramosrincon@yahoo.es](mailto:jramosrincon@yahoo.es)

65  
66 \* **Correspondence:** [mrubio@bellvitgehospital.cat](mailto:mrubio@bellvitgehospital.cat)

67 **\*\*M. Rubio-Rivas and X. Corbella contributed equally as co-first authors of the study.**

68 **\*\*\* A complete list of the SEMI-COVID-19 Network members is provided in the Appendix.**

69  
70  
71  
72  
73  
74  
75  
76  
77  
78  
79  
80  
81  
82  
83  
84  
85  
86  
87  
88  
89  
90

91 **Abstract:** (1) *Background:* This study aims to identify different clinical phenotypes in COVID-19  
92 pneumonia using cluster analysis and to assess the prognostic impact among identified clusters in  
93 such patients. (2) *Methods:* Cluster analysis including 11 phenotypic variables was performed in a  
94 large cohort of 12,066 COVID-19 patients, collected and followed-up from March 1, to July 31, 2020,  
95 from the nationwide Spanish SEMI-COVID-19 Registry. (3) *Results:* Of the total of 12,066 patients  
96 included in the study, most were males (7,052, 58.5%) and Caucasian (10,635, 89.5%), with a mean  
97 age at diagnosis of 67 years (SD 16). The main pre-admission comorbidities were arterial  
98 hypertension (6,030, 50%), hyperlipidemia (4,741, 39.4%) and diabetes mellitus (2,309, 19.2%). The  
99 average number of days from COVID-19 symptom onset to hospital admission was 6.7 days (SD 7).  
100 The triad of fever, cough, and dyspnea was present almost uniformly in all 4 clinical phenotypes  
101 identified by clustering. Cluster C1 (8,737 patients, 72.4%) was the largest, and comprised patients  
102 with the triad alone. Cluster C2 (1,196 patients, 9.9%) also presented with ageusia and anosmia;  
103 cluster C3 (880 patients, 7.3%) also had arthromyalgia, headache, and sore throat; and cluster C4  
104 (1,253 patients, 10.4%) also manifested with diarrhea, vomiting, and abdominal pain. Compared to  
105 each other, cluster C1 presented the highest in-hospital mortality (24.1% vs. 4.3% vs. 14.7% vs. 18.6%;  
106  $p < 0.001$ ). The multivariate study identified phenotypic clusters as an independent factor for  
107 in-hospital death. (4) *Conclusion:* The present study identified 4 phenotypic clusters in patients with  
108 COVID-19 pneumonia, which predicted the in-hospital prognosis of clinical outcomes.

109 **Keywords:** COVID-19; Cluster analysis; Prognosis; Phenotype  
110

---

## 111 1. Introduction

112 Since January 2020, the COVID-19 pneumonia pandemic has spread across the globe. As of  
113 August 13th, 2020, 20,624,830 people have been infected worldwide and 749,424 people have died.  
114 Numerous studies have highlighted the clinical characteristics of the disease [1-3]. From the  
115 beginning, different clinical forms in presentation and prognosis have been intuited; however, these  
116 clinical forms have not been defined yet. Although some factors associated with poor prognosis are  
117 known [4], it is not clear which patients may present a worse evolution during hospitalization and  
118 why.

119 The present study aimed to identify clinical phenotypes by cluster analysis in our large  
120 nationwide series of COVID-19 pneumonia and to create a predictive model related to a poor  
121 outcome.

## 122 2. Materials and methods

### 123 2.1. Study Design, Patient Selection, and Data Collection

124 A cluster analysis was performed in the large cohort of consecutive patients included in the  
125 Spanish registry SEMI-COVID-19, created by the Spanish Society of Internal Medicine (SEMI). This  
126 is a multicenter, nationwide registry with 109 hospitals registered so far. From March 1, to July 31,  
127 2020, 12,066 hospitalized patients providing data of symptoms of COVID-19 upon admission were  
128 included in the Registry. All included patients were diagnosed by polymerase chain reaction (PCR)  
129 test taken from a nasopharyngeal sample, sputum or bronchoalveolar lavage.

130 All participating centers in the register received confirmation from the relevant Ethics  
131 Committees, including Bellvitge University Hospital (PR 128/20).

132 *2.2. Treatments prescribed*

133 The treatments received were in accordance with the medical guidelines available at the time of  
134 the pandemic [5-11]. In the absence of clinical evidence of any of the treatments at the initial time of  
135 the pandemic, their use was allowed off-label.

136 *2.3. Outcomes definition*

137 The primary outcome of the study was in-hospital mortality. The secondary outcome was the  
138 requirement of mechanical ventilation or intensive care unit (ICU) admission.

139 *2.4. Statistical analysis*

140 Categorical variables were expressed as absolute numbers and percentages. Continuous  
141 variables are expressed as mean plus standard deviation (SD) in case of parametric distribution or  
142 median [IQR] in the case of non-parametric distribution. Differences among groups were assessed  
143 using the chi-square test for categorical variable and ANOVA or Kruskal-Wallis test as appropriate  
144 for continuous variables. P-values < 0.05 indicated statistical significance.

145 The cluster analysis was performed by ascendant hierarchical clustering on the 11 variables  
146 previously selected by using Ward's minimum variance method with Euclidean squared distance  
147 [12]. Results are graphically depicted by a dendrogram. The number of clusters was estimated by a  
148 visual distance criterion of the dendrogram. The cluster analysis model was included in a binary  
149 logistic regression, taking the two above-mentioned outcomes as dependent variables. Mortality  
150 among the groups was represented by the Kaplan-Meier curves with their logarithmic range test.

151 Statistical analysis was performed by IBM SPSS Statistics for Windows, Version 26.0. Armonk,  
152 NY: IBM Corp.

153 **3. Results**

154 *3.1. General data and symptoms*

155 A total of 12,066 patients were included in the study. General data of the whole cohort are  
156 summarized in Table 1. Patients were mostly males (7,052, 58.5%) and Caucasian (10,635, 89.5%).  
157 The mean age at diagnosis was 67 years (SD 16). The average number of days from symptom onset  
158 to hospital admission was 6.7 days (SD 7). The main pre-admission comorbidities were arterial  
159 hypertension (6,030, 50%), hyperlipidemia (4,741, 39.4%) and diabetes mellitus (2,309, 19.2%). The  
160 mean Charlson index among patients was 1.2 (SD 1.8). The most common symptoms (Table 2) were  
161 fever 10,346 (85.7%), cough (9,142, 75.8%), dyspnea (7,205, 59.7%), arthromyalgia (3,794, 31.4%),  
162 diarrhea (2,943, 24.4%), headache (1,402, 11.6%), sore throat (1,191, 9.9%), ageusia (992, 8.2%),  
163 vomiting (891, 7.4%), anosmia (879, 7.3%), and abdominal pain (738, 6.1%).

164 *3.2 Clustering analysis.*

165 Despite most patients presenting with fever, cough, and/or dyspnea, 4 different clusters were  
166 identified. The main characteristics of each are shown in Tables 1-5. Cluster C1 (8,737 patients,  
167 72.4%) comprised patients with the triad of fever, cough, and dyspnea, with no other predominant  
168 symptoms. Subjects grouped in cluster C1 tended to be elderly males with a higher prevalence of  
169 comorbidities. The time between symptom onset and admission was also shorter in this subgroup of  
170 patients, in comparison with the other identified clusters. One in ten C1 patients required ICU  
171 admission and a quarter of them died, representing the highest mortality rate among the 4 clusters.  
172 Patients in the C2 cluster (1,196 patients, 9.9%) comprised patients predominantly presenting with

173 ageusia and/or anosmia, often accompanied by fever, cough, and/or dyspnea. Subjects grouped in  
174 the C2 cluster showed the lowest percentage of ICU admission and mortality rate. Cluster C3 (880  
175 patients, 7.3%) included patients predominantly with arthromyalgia, headache, and/or sore throat  
176 presentations, often also accompanied by fever, cough, and/or dyspnea. Up to 9.7% of C3 patients  
177 required ICU admission and 14.5% died. Finally, subjects grouped in cluster C4 (1,253 patients,  
178 10.4%) presented predominantly with diarrhea, vomiting, and/or abdominal pain, also often  
179 accompanied by fever, cough, and/or dyspnea. Of these, 8.5% required ICU admission and 18.6%  
180 died. This mortality rate of cluster C4 was second only to the C1.

181 Analytical results among clusters showed that PaO<sub>2</sub>/FiO<sub>2</sub> at entry was a median 286 mmHg  
182 [229-338], being highest in the C2 cluster (281 mmHg vs. 305 vs. 295 vs. 295; p<0.001). Cluster C1  
183 showed the highest values of C-reactive protein (CRP) (78 mg/l vs. 69 vs. 63 vs. 66; p<0.001), lactate  
184 dehydrogenate (LDH) (332 U/l vs. 309 vs. 330 vs. 331; p<0.001), ferritin (669 mcg/l vs. 634 vs. 587 vs.  
185 620; p=0.051), interleukin-6 (IL-6) (37 pg/ml vs. 26 vs. 27 vs. 24; p<0.001), and D-dimer (680 ng/ml vs.  
186 594 vs. 595 vs. 608; p<0.001).

### 187 *3.3 Treatments and outcomes*

188 The treatments received are shown in Table 4. As antiviral treatment, patients were treated with  
189 hydroxychloroquine (HCQ) (10,665, 88.6%), Lopinavir/ritonavir (LPV/r) (7,894, 65.7%), azithromycin  
190 (7,558, 62.9%) and remdesivir (60, 0.5%). As immunomodulatory treatments, they received  
191 corticosteroids (4,343, 36.2%), interferon (1,496, 12.5%) and tocilizumab (1,121, 9.3%). As  
192 anticoagulant treatment, patients received oral anticoagulation (384, 3.18%) or  
193 low-molecular-weight heparin (LMWH) at prophylactic doses (7,903, 65.9%), intermediate doses  
194 (815, 6.8%) or full doses (1,305, 10.9%).

195 Of the total 12,066, 1,038 (8.7%) patients required high-flow nasal cannula (HFNC), 641 (5.3%)  
196 non-invasive mechanical ventilation (NIMV), and 906 (7.5%) invasive mechanical ventilation (IMV).  
197 Admissions to the ICU numbered 1,120 patients (9.3%). Overall, the mortality rate was 20.9% (2,522  
198 patients). The outcomes are shown in Table 5.

### 199 *3.4 Predictive model for mortality*

200 A predictive study of uni- and multivariate logistic regression using in-hospital death as a  
201 dependent variable was performed. The predictors of mortality in the multivariate study were as  
202 follows: age [OR 1.07 (1.04-1.11)], gender (female) [OR 0.24 (0.10-0.56)], BMI [OR 1.09 (1.02-1.17)],  
203 Charlson index [OR 1.52 (1.30-1.78)], respiratory rate upon admission >20 bpm [OR 2.84 (1.33-6.05)],  
204 PaO<sub>2</sub>/FiO<sub>2</sub> upon admission [OR 0.99 (0.98-1.00)], CRP [OR 0.99 (0.99-1.00)], LDH [OR 1.00  
205 (1.00-1.00)], ferritin [OR 1.00 (1.00-1.00)], IL-6 [OR 1.00 (1.00-1.00)], and the phenotypic cluster. The  
206 C1 cluster was chosen as a reference. Clusters C2 [OR 0.91 (0.30-2.31)] and C3 [OR 0.18 (0.04-0.96)]  
207 had a better prognosis in the multivariate study. The C4 cluster was also observed to have a poor  
208 prognosis [OR 2.85 (0.88-9.22)].

209  
210  
211  
212  
213  
214  
215

216

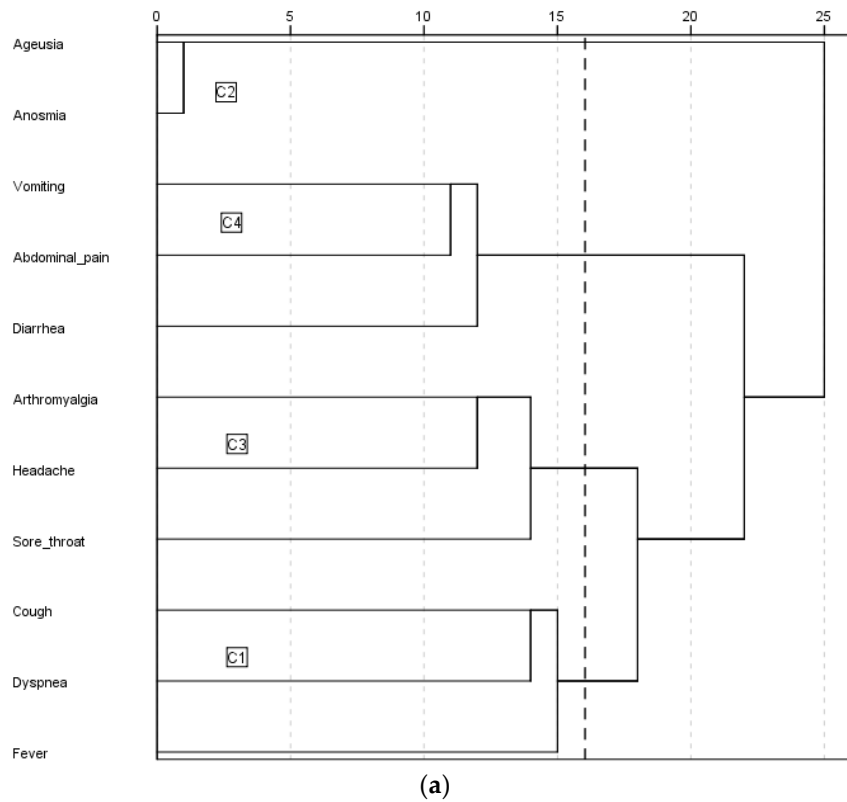
217 3.5 Figures, Tables and Schemes

218

219

220

221



222

**Figure 1.** Dendrogram.

223

224

225

226

227

228

229

230

231

232

**Table 1.** General data between clusters

	All patients N=12,066	C1 N=8,737	C2 N=1,196	C3 N=880	C4 N=1,253	p-value
<b>Age yr, median [IQR]</b>	68 [56-79]	70 [57-80]	61 [51-71]	64 [52-75]	67 [53-77]	<0.001
<b>Gender, males n (%)</b>	7,052 (58.5)	5,303 (60.8)	643 (53.8)	507 (57.6)	599 (47.9)	<0.001
<b>Race</b>						
Caucasian	10,635 (89.5)	7,820 (90.9)	1,023 (86.7)	738 (84.7)	1,054 (86)	
Black	43 (0.4)	35 (0.4)	3 (0.3)	1 (0.1)	4 (0.3)	
Hispanic	1,041 (8.8)	643 (7.5)	137 (11.6)	117 (13.4)	144 (11.7)	<0.001
Asian	59 (0.5)	41 (0.5)	2 (0.2)	6 (0.7)	10 (0.8)	
Others	100 (0.8)	62 (0.7)	15 (1.3)	9 (1)	14 (1.1)	
<b>BMI, median [IQR]</b>	28 [25-31]	28 [25-31]	28 [25-31]	28 [25-31]	28 [25-31]	0.426
<b>Days from onset to admission, median [IQR]</b>	7 [4-9]	6 [3-9]	8 [6-10]	7 [4-10]	7 [4-9]	<0.001
<b>Smoking behaviour, n (%)</b>						
Never	8,035 (69.7)	5,761 (69.2)	793 (68.7)	587 (69.4)	894 (74.3)	
Current smoker	567 (4.9)	414 (5)	64 (5.5)	41 (4.8)	48 (4)	0.027
Former smoker	2,930 (25.4)	2,153 (25.9)	297 (25.7)	218 (25.8)	262 (21.8)	
<b>Comorbidity, n(%)</b>						
Arterial hypertension	6,030 (50)	4,571 (52.4)	468 (39.1)	386 (43.9)	605 (48.4)	<0.001
Diabetes mellitus	2,309 (19.2)	1,774 (20.4)	177 (14.8)	156 (17.8)	202 (16.2)	<0.001
Hyperlipidemia	4,741 (39.4)	3,527 (40.4)	420 (35.1)	325 (37)	469 (37.5)	0.001
COPD	786 (6.5)	649 (7.4)	44 (3.7)	43 (4.9)	50 (4)	<0.001
Asthma	869 (7.2)	630 (7.2)	90 (7.5)	57 (6.5)	92 (7.4)	0.827
OSAS	751 (6.3)	574 (6.6)	57 (4.8)	48 (5.5)	72 (5.8)	0.057
Ischaemic cardiopathy	931 (7.7)	722 (8.3)	49 (4.1)	65 (7.4)	95 (7.6)	<0.001
Chronic heart failure	809 (6.7)	660 (7.6)	41 (3.4)	42 (4.8)	66 (5.3)	<0.001
Chronic kidney disease	696 (5.8)	550 (6.3)	36 (3)	36 (4.1)	74 (5.9)	<0.001
Chronic hepatopathy	440 (3.7)	330 (3.8)	46 (3.8)	22 (2.5)	42 (3.4)	<0.001
Active cancer	1,196 (9.9)	916 (10.5)	94 (7.9)	72 (8.2)	114 (9.1)	0.005
Autoimmune disease	277 (2.3)	195 (2.2)	33 (2.8)	19 (2.2)	30 (2.4)	0.701
<b>Charlson index, median [IQR]</b>	1 [0-2]	1 [0-2]	0 [0-1]	0 [0-1]	0 [0-2]	<0.001

BMI: body mass index. COPD: chronic obstructive pulmonary disease. OSAS: obstructive sleep apnea syndrome

233

234

235

236

237

**Table 2.** Symptoms and physical examination between clusters

	All patients N=12,066	C1 N=8,737	C2 N=1,196	C3 N=880	C4 N=1,253	p-value
<b>Symptoms n(%)</b>						
High-grade fever $\geq 38^{\circ}\text{C}$	7,915 (65.6)	5,672 (64.9)	843 (70.5)	598 (68)	802 (64)	<0.001
Low-grade fever $< 38^{\circ}\text{C}$	2,431 (20.1)	1,723 (19.7)	238 (19.9)	194 (22)	276 (22)	<0.001
Cough	9,142 (75.8)	6,501 (74.4)	993 (83)	766 (87)	882 (70.4)	<0.001
Dyspnea	7,205 (59.7)	5,340 (61.1)	727 (60.8)	492 (55.9)	646 (51.6)	<0.001
Arthromyalgia	3,794 (31.4)	2,432 (27.8)	569 (47.6)	370 (42)	423 (33.8)	<0.001
Sore throat	1,191 (9.9)	0	186 (15.6)	880 (100)	125 (10)	<0.001
Headache	1,402 (11.6)	730 (8.4)	292 (24.4)	202 (23)	178 (14.2)	<0.001
Anosmia	879 (7.3)	0	879 (73.5)	0	0	<0.001
Ageusia	992 (8.2)	0	988 (82.6)	0	4 (0.3)	<0.001
Diarrhea	2,943 (24.4)	1,654 (18.9)	473 (39.5)	181 (20.6)	635 (50.7)	<0.001
Vomiting	891 (7.4)	0	110 (9.2)	0	781 (62.3)	<0.001
Abdominal pain	738 (6.1)	0	79 (6.6)	0	659 (52.6)	<0.001
<b>Heart rate upon admission, bpm median [IQR]</b>	88 [77-100]	87 [76-100]	89 [79-100]	89 [78-100]	87 [77-100]	0.001
<b>Respiratory rate upon admission <math>&gt;20 \times'</math>, n(%)</b>	3,833 (32.5)	2,939 (34.4)	304 (26.1)	249 (28.9)	341 (28)	<0.001

238

**Table 3.** Lab tests between clusters

	All patients N=12,066	C1 N=8,737	C2 N=1,196	C3 N=880	C4 N=1,253	p-value
<b>PaO<sub>2</sub>/FiO<sub>2</sub> upon admission, mmHg median [IQR]</b>	286 [229-338]	281 [224-333]	305 [254-355]	295 [238-352]	295 [238-348]	<0.001
<b>Lab test upon admission, median [IQR]</b>						
Lymphocytes $\times 10^6/\text{l}$	910 [680-1,280]	900 [660-1,270]	1,000 [700-1,310]	1,000 [715-1,300]	900 [630-1,210]	<0.001
CRP mg/l	74 [30-141]	78 [30-146]	69 [29-130]	63 [26-135]	66 [27-129]	<0.001
LDH U/l	329 [253-444]	332 [255-450]	309 [247-412]	330 [248-446]	331 [256-439]	<0.001
ALT U/l	30 [19-47]	29 [19-46]	32 [21-52]	31 [21-49]	30 [20-48]	<0.001
Ferritin mcg/l	655 [324-1,281]	669 [330-1,320]	634 [291-1,172]	587 [310-1,167]	620 [326-1,265]	0.051
IL6 pg/ml	33 [13-69]	37 [14-73]	26 [9-54]	27 [12-70]	24 [10-58]	<0.001
D-dimer ng/ml	654 [370-1,204]	680 [382-1,290]	594 [346-980]	595 [347-1,023]	608 [350-1,152]	<0.001

ALT: alanine transaminase. CRP: C-reactive protein. IL6: interleukin6. LDH: lactate dehydrogenase

239



240

241

**Table 4.** Treatments between clusters

	All patients N=12,066	C1 N=8,737	C2 N=1,196	C3 N=880	C4 N=1,253	p-value
<b>HCQ, n (%)</b>	10,665	7,654 (87.9)	1,130 (94.5)	770 (87.6)	1,111 (88.8)	<0.001
<b>LPV/r, n (%)</b>	(88.6)	5,640 (64.8)	783 (65.5)	610 (69.5)	861 (69)	0.002
<b>Azithromycin, n (%)</b>	7,894 (65.7)	5,407 (62.2)	835 (69.8)	510 (58)	806 (64.5)	<0.001
<b>Remdesivir, n (%)</b>	7,558 (62.9)	36 (0.4)	10 (0.8)	5 (0.6)	9 (0.7)	0.150
	60 (0.5)					
<b>Interferon, n (%)</b>	1,496 (12.5)	1,122 (13)	68 (5.7)	141 (16.1)	165 (13.2)	<0.001
<b>Tocilizumab, n (%)</b>	1,121 (9.3)	810 (9.3)	110 (9.2)	93 (10.6)	108 (8.7)	0.487
<b>Corticosteroids, n (%)</b>	4,343 (36.2)	3,254 (37.5)	399 (33.5)	273 (31.2)	417 (33.4)	<0.001
<b>Heparin, n (%)</b>						<0.001
Prophylactic LMWH	7,903 (65.9)	5,633 (65)	817 (68.5)	584 (66.6)	869 (69.7)	
Middle doses LMWH	815 (6.8)	589 (6.8)	97 (8.1)	49 (5.6)	80 (6.4)	
High doses LMWH	1,305 (10.9)	997 (11.5)	120 (10.1)	90 (10.3)	98 (7.9)	
<b>Oral anticoagulation, n (%)</b>						0.004
Oral anti-vitamin K drugs	189 (1.6)	156 (1.8)	10 (0.8)	7 (0.8)	16 (1.3)	
DOACs	195 (1.6)	157 (1.8)	10 (0.8)	10 (1.1)	18 (1.4)	

DOACs: direct oral anticoagulants. HCQ: hydroxychloroquine. LPV/r: lopinavir/ritonavir. LMWH: low-molecular weight heparin

242

243

**Table 5.** Outcomes between clusters

	All patients N=12,066	C1 N=8,737	C2 N=1,196	C3 N=880	C4 N=1,253	p-value
<b>Oxygenation/ventilation, n (%)</b>						
HFNC	1,038 (8.7)	757 (8.8)	82 (6.9)	75 (8.5)	124 (10)	0.053
NIMV	641 (5.3)	485 (5.6)	46 (3.9)	44 (5)	66 (5.3)	0.094
IMV	906 (7.5)	694 (8)	49 (4.1)	75 (8.6)	88 (7.1)	<0.001
<b>ICU admission, n (%)</b>	1,120 (9.3)	847 (9.7)	71 (5.9)	95 (10.8)	107 (8.5)	<0.001
<b>Death, n (%)</b>	2,522 (20.9)	2,109 (24.1)	51 (4.3)	129 (14.7)	233 (18.6)	<0.001

HFNC: high-flow nasal cannula. ICU: intensive care unit. IMV: invasive mechanical ventilation. NIMV: non-invasive mechanical ventilation.

**Table 6.** Risk factors of in-hospital mortality.

	Univariate analysis OR (95%CI)	p-value	Multivariate analysis OR (95%CI)	p-value
<b>Age/year</b>	1.09 (1.09-1.10)	<0.001	1.07 (1.04-1.11)	<0.001
<b>Gender (female)</b>	0.78 (0.71-0.86)	<0.001	0.24 (0.10-0.56)	0.001
<b>BMI</b>	1.02 (1.01-1.04)	<0.001	1.09 (1.02-1.17)	0.014
<b>Comorbidity</b>				
Arterial hypertension	3.07 (2.79-3.38)	<0.001	NS	
Diabetes mellitus	2.07 (1.87-2.29)	<0.001	NS	
Hyperlipidemia	1.80 (1.64-1.96)	<0.001	NS	
COPD	2.82 (2.43-3.27)	<0.001	NS	
Ischaemic cardiopathy	2.67 (2.32-3.07)	<0.001	NS	
Chronic heart failure	3.74 (3.23-4.32)	<0.001	NS	
Chronic kidney disease	3.18 (2.72-3.72)	<0.001	NS	
Chronic hepatopathy	1.57 (1.27-1.94)	<0.001	NS	
Active cancer	2.23 (1.96-2.53)	<0.001	NS	
<b>Charlson index</b>	1.37 (1.34-1.41)	<0.001	1.52 (1.30-1.78)	<0.001
<b>Heart rate upon admission</b>	1.00 (0.99-1.00)	0.278		
<b>Respiratory rate upon admission &gt;20x'</b>	4.48 (4.08-4.92)	<0.001	2.84 (1.33-6.05)	0.007
<b>PaO2/FiO2 upon admission</b>	0.99 (0.99-0.99)	<0.001	0.99 (0.98-1.00)	0.001
<b>Lab test upon admission</b>				
Lymphocytes x10 <sup>6</sup> /l	1.00 (1.00-1.00)	0.768		
CRP mg/l	1.01 (1.01-1.01)	<0.001	0.99 (0.99-1.00)	0.034
LDH U/l	1.00 (1.00-1.00)	<0.001	1.00 (1.00-1.00)	0.032
ALT U/l	1.00 (0.99-1.00)	0.792		
Ferritin mcg/l	1.00 (1.00-1.00)	<0.001	1.00 (1.00-1.00)	0.001
IL6 pg/ml	1.00 (1.00-1.00)	<0.001	1.00 (1.00-1.00)	0.020
D-dimer ng/ml	1.00 (1.00-1.00)	<0.001	1.00 (1.00-1.00)	0.054
<b>Treatments during admission</b>				
Remdesivir	1.16 (0.64-2.12)	0.623		
Tocilizumab	1.24 (1.07-1.43)	0.004	NS	
Corticosteroids	2.06 (1.89-2.26)	<0.001	NS	
<b>Clusters</b>				
C1	1 ref.		1 ref.	
C2	0.14 (0.11-0.19)	<0.001	0.91 (0.30-2.75)	0.865
C3	0.54 (0.45-0.66)	<0.001	0.18 (0.04-0.96)	0.044
C4	0.72 (0.62-0.84)	<0.001	2.85 (0.88-9.22)	0.082

BMI: body mass index. COPD: chronic obstructive pulmonary disease.

245

246

247

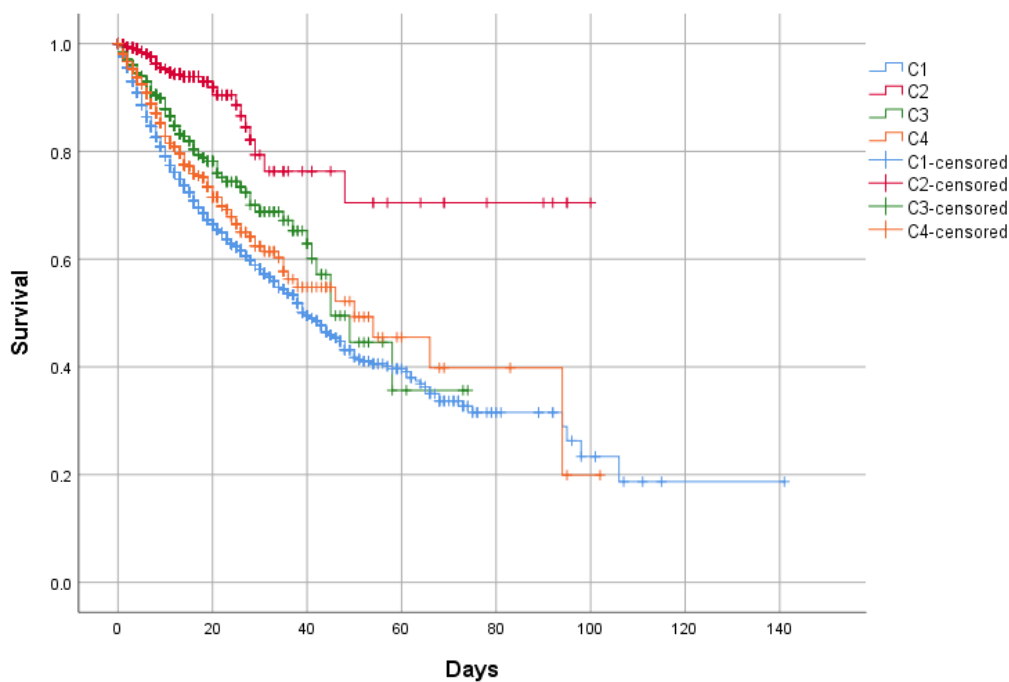
248

249

250

251

**Figure 2.** In-hospital mortality between clusters. Kaplan-Meier. Log-rank test  $p < 0.001$



252

253

254

#### 4. Discussion

255

256

257

258

259

260

261

262

263

264

265

266

The present investigation shows data from the first study of phenotypic clusters in COVID-19 pneumonia. The source of data was the Spanish registry SEMI-COVID-19, whose characteristics have recently been published [13]. Our analysis showed the existence of 4 clusters with differentiated clinical peculiarities and different prognoses.

The general characteristics of age, gender, and comorbidities found in our study are consistent with those already described in the literature. Likewise, the treatments administered are in accordance with the study period covered by the record.

The triad of fever, cough, and dyspnea was present almost uniformly in all patients with COVID-19 pneumonia grouped in the 4 phenotypes. However, other particular symptoms may help clinicians to differentiate them. Cluster C1 does not usually present symptoms in addition to the triad of fever, cough, and dyspnea. Subjects grouped in the C2 cluster usually present with ageusia and/or anosmia in addition to the triad. Cluster C3 is characterized by the presence of concomitant

267 arthromyalgia, headache, and/or sore throat. Finally, the C4 cluster also manifests with digestive  
268 symptoms such as diarrhea, vomiting, and/or abdominal pain.

269 In terms of prognosis, the C1 cluster showed the highest mortality rate (24.1%) in this large  
270 Spanish nation-wide series. It was followed by C4 (18.6%), C3 (14.7%), and finally C2 (4.3%). The  
271 crude survival study identified the C2 cluster as a cluster of good prognosis. The multivariate  
272 regression study showed a non-significative trend to better prognosis. Also identified the C3 cluster  
273 as another good prognostic subgroup, in addition to C2. In contrast, the C1 and C4 clusters were  
274 identified as the poorest prognosis clusters.

275 The risk factors recognized so far for poor prognosis have been repeated in several studies. The  
276 mainly reported risk factors are advanced age, male gender, higher BMI, and some analytical  
277 parameters such as PaO<sub>2</sub>/FiO<sub>2</sub>, lymphocyte count, CRP, LDH, ferritin, IL-6, and D-dimer. Certain  
278 comorbidities such as diabetes mellitus, arterial hypertension, or hyperlipidemia have also been  
279 suggested as poor prognostic factors but not identified to date.

280 Interestingly, the study presented here identifies the cluster phenotype as a new prognostic  
281 factor. Since clusters share common characteristics, sometimes it can be difficult to recognize which  
282 cluster a patient belongs to. However, in other many occasions, the clinical profile may be  
283 sufficiently evident to recognize the cluster, helping physicians to make clinical decisions based on  
284 prognostic information of the identified cluster.

285 To date, there are no published, peer-reviewed phenotypic cluster studies in the medical  
286 literature on COVID-19. A study of clusters in out-of-hospital population can be found in the  
287 medRxiv repository [14]. It is based on an app in which patients enter their symptoms. With these  
288 data and some other clinical data provided by the patient, a risk of respiratory support (defined as  
289 the need for oxygen therapy or mechanical ventilation) is deduced. It is therefore a predictor of  
290 hospitalization, we could say. We have some doubts as to whether the source of the data can be  
291 considered reliable since the data is not introduced by a doctor but by the patient himself. On the  
292 other hand, the fact that it is based on an app may represent a bias against the elderly population not  
293 accustomed to electronic devices. They identify 6 phenotypic clusters, with some similarity and  
294 overlap with the clusters presented in our study. It is an interesting tool, specially designed for  
295 general practitioners.

296 As for the generalization of our results, it should be noted that the data come from a developed  
297 European western country with a mostly Caucasian population and little representation of other  
298 ethnicities. Furthermore, it should also be taken into account that Spain has a universal-coverage  
299 public healthcare system, not comparable with some other developed and developing countries. On  
300 the other hand, proportionally speaking, Spain has one of the largest elderly populations in the  
301 world and, as is well known, age has been described as a fundamental factor in the poor prognosis of  
302 COVID-19 pneumonia [4]. These characteristics could influence the outcomes shown.

303 In order to speak properly, the definition of a true phenotype requires a consistent natural  
304 history, similar clinical and physiological characteristics, underlying pathobiology with identifiable  
305 biomarkers and genetics, and predictable response to general and specific therapies [15].  
306 Accordingly, it would be necessary to study each of the present clinical clusters genetically and to  
307 verify that each cluster has a differentiated genetic background. In the literature, some studies  
308 attempted to phenotype patients with COVID-19 as a function of the immune response, and others

309 suggested phenotyping as a function of pathophysiology [16,17]. It would be interesting to combine  
310 all methods of phenotyping.

311 We believe that the identification of the present clusters may be of great help to clinicians in  
312 order to identify those cases with a better or worse prognosis, and thus direct more individualized  
313 therapeutic strategies. In this regard, we also believe that identification of phenotypes can serve as a  
314 guide for clinical trials, not evaluating new treatments in general, since not all subgroups of  
315 COVID-19 patients may benefit from the same therapeutic strategies. On the other hand, drugs  
316 previously discarded, but with a rational pathophysiological basis to be tested, should be reanalyzed  
317 to clarify their real efficacy, taking into account the different clinical spectrum of COVID-19 patients.

318 The main strength of this study is the identification of different phenotypic clusters in COVID-19  
319 pneumonia from a very large sample of more than 12,000 patients from more than 100 hospitals.  
320 Among limitations, data were obtained from a retrospective register of a sole country, which means  
321 that some specific data could be missing or collected with some grade of heterogeneity.

## 322 5. Conclusions

323 In conclusion, the present study identified 4 phenotypic clusters that predicted in-hospital  
324 prognosis of clinical outcome in a large nationwide series of patients with COVID-19 pneumonia.  
325 Clusters associated with bad in-hospital prognosis were C1, in which subjects presented with the  
326 isolated triad of fever, cough, and dyspnea, and C4 also manifested with diarrhea, vomiting, and/or  
327 abdominal pain. In contrast, subjects grouped in the C2 cluster (manifested also with ageusia and/or  
328 anosmia) showed the best prognosis, together with cluster C3 (adding arthromyalgia, headache,  
329 and/or sore throat), which was second only to C2 showing a good outcome.

330  
331

## 332 Acknowledgments

333 We gratefully acknowledge all the investigators who participate in the SEMI-COVID-19 Registry.  
334 We also thank the SEMI-COVID-19 Registry Coordinating Center, S&H Medical Science Service, for  
335 their quality control data, logistic and administrative support. The authors declare that there are no  
336 conflicts of interest.

337

338 **Author Contributions:** For research articles with several authors, a short paragraph specifying their  
339 individual contributions must be provided. The following statements should be used  
340 “Conceptualization, M.R.-R., X.C and J.M. M.-L.; methodology, M.R.; software, M.R.; validation,  
341 M.R.-R., X.C.; formal analysis, M.R.-R.; investigation, M.R.-R., X.C.; resources, R.G.-H., J.M.R.-R.;  
342 data curation, M.R.-R., X.C, J.M. M.-L., J.L.A., A.L.S., C.Y.B., V.G.G., L.F.D.G., R.G.F., S.P.C., S.F.C.,  
343 B.C.R., L.J.V., I.P.C., M.L.T., J.A.M.O., M.C.M.G., J.L.S.C., E.G.S., J.N.A.P., A.M.-U.D.-C., M.J.E.G.,  
344 P.T.G., R.G.-H., J.M.R.-R.; writing—original draft preparation, M.R.-R., X.C.; writing—review and  
345 editing, M.R.-R., X.C.; visualization M.R.-R., X.C.; supervision, M.R.-R., X.C, R.G.-H., J.M.R.-R.;  
346 project administration, J.M.R.-R. All authors have read and agreed to the published version of the  
347 manuscript.”, please turn to the [CRediT taxonomy](#) for the term explanation. Authorship must be  
348 limited to those who have contributed substantially to the work reported.

349

350 **Funding:** This research received no external funding

351 **Conflicts of Interest:** The authors declare no conflict of interest.

## 352 References

- 353 1. Zhou F, Yu T, Du R *et al.* Clinical course and risk factors for mortality of adult inpatients  
354 with COVID-19 in Wuhan, China: a retrospective cohort study. *Lancet* 2020; 395: 1054-62.
- 355 2. Novel Coronavirus Pneumonia Emergency Response Epidemiology Team. The  
356 Epidemiological Characteristics of an Outbreak of 2019 Novel Coronavirus Diseases  
357 (COVID-19) - China, 2020. *China CDC Weekly*.  
358 <http://weekly.chinacdc.cn/en/article/id/e53946e2-c6c4-41e9-9a9b-fea8db1a8f51>. Accessed  
359 March 12, 2020.
- 360 3. Grasselli G, Zangrillo A, Zanella A *et al.* Baseline Characteristics and Outcomes of 1591  
361 Patients Infected With SARS-CoV-2 Admitted to ICUs of the Lombardy Region, Italy. *JAMA*  
362 2020; 323: 1574-81.
- 363 4. Du RH, Liang LR, Yang CQ *et al.* Predictors of Mortality for Patients with COVID-19  
364 Pneumonia Caused by SARS-CoV-2: A Prospective Cohort Study. *Eur Respir J.* 2020; 55:  
365 2000524.
- 366 5. Gautret P, Cagier JC, Parola P *et al.* Hydroxychloroquine and azithromycin as a treatment of  
367 COVID-19: results of an open-label non-randomized clinical trial. *Int J Antimicrob Agents*  
368 2020: 105949.
- 369 6. Cao B, Wang Y, Wen D *et al.* A Trial of Lopinavir-Ritonavir in adults hospitalized with  
370 severe Covid-19. *N Engl J Med* 2020; 382: 1787-99.
- 371 7. Grein J, Ohmagari N, Shin D *et al.* Compassionate Use of Remdesivir for Patients with  
372 Severe Covid-19. *N Engl J Med.* April 2020; 382: e101.
- 373 8. Capra R, De Rossi N, Mattioli F *et al.* Impact of low dose tocilizumab on mortality rate in  
374 patients with COVID-19 related pneumonia. *Eur J Intern Med* 2020; 76: 31-5.
- 375 9. Campochiaro C, Della-Torre E, Cavalli G *et al.* Efficacy and safety of tocilizumab in severe  
376 COVID-19 patients: a single-centre retrospective cohort study. *Eur J Intern Med* 2020; 76:  
377 43-9.
- 378 10. Morena V, Milazzo L, Oreni L *et al.* Off-label use of tocilizumab for the treatment of  
379 SARS-CoV-2 pneumonia in Milan, Italy. *Eur J Intern Med* 2020; 76: 36-42.
- 380 11. A RECOVERY Collaborative Group, Horby P, Lim WS, et al. Dexamethasone in  
381 Hospitalized Patients with Covid-19 - Preliminary Report [published online ahead of print,  
382 2020 Jul 17]. *N Engl J Med.* 2020;NEJMoa2021436. doi:10.1056/NEJMoa2021436
- 383 12. Husson F, Josse J, Pagès J. Principal component methods – hierarchical clustering –  
384 partitional clustering: why would we need to choose for visualizing data? Technical Report.  
385 2010. <http://math.agrocampus-ouest.fr/infogluce/DeliverLive>.
- 386 13. J M Casas-Rojo, J M Antón-Santos, J Millán-Núñez-Cortés, et al. Características clínicas de  
387 los pacientes hospitalizados con COVID-19 en España: resultados del Registro  
388 SEMI-COVID-19. *Rev Clin Esp* 2020; S0014-2565(20)30206-X. (DOI:  
389 <https://doi.org/10.1016/j.rce.2020.07.003>)

- 390 14. Sudre CH, Lee K, Lochlainn MN, et al. Symptom clusters in Covid19: A potential clinical  
391 prediction tool from the COVID Symptom study app. medRxiv 2020.06.12.20129056; doi:  
392 <https://doi.org/10.1101/2020.06.12.20129056>
- 393 15. Haldar P, Berair R. Endotypes and asthma. In: Bernstein JS, Levy M, editors. Clinical  
394 asthma. Theory and practice. *Boca Raton: CRC Press*. 2014: 39-43.
- 395 16. Zhang B, Zhou X, Zhu C, et al. Immune Phenotyping Based on the  
396 Neutrophil-to-Lymphocyte Ratio and IgG Level Predicts Disease Severity and Outcome for  
397 Patients With COVID-19. *Front Mol Biosci*. 2020; 7: 157. doi: 10.3389/fmolb.2020.00157
- 398 17. Cherian R, Chandra B, Tung ML, Vuylsteke A. COVID-19 conundrum: Clinical phenotyping  
399 based on pathophysiology as a promising approach to guide therapy in a novel illness. *Eur*  
400 *Respir J*. 2020:2002135. doi: 10.1183/13993003.02135-2020

401



© 2020 by the authors. Submitted for possible open access publication under the terms and conditions of the Creative Commons Attribution (CC BY) license (<http://creativecommons.org/licenses/by/4.0/>).

402

403

404

405

406

407

408

409

410

411

412

413

414

415

416

417

418

419 **Appendix. List of the SEMI-COVID-19 Network members**

420

421 **Coordinator of the SEMI-COVID-19 Registry:** José Manuel Casas Rojo.

422

423 **SEMI-COVID-19 Scientific Committee Members:** José Manuel Casas Rojo, José Manuel Ramos  
424 Rincón, Carlos Lumbreras Bermejo, Jesús Millán Núñez-Cortés, Juan Miguel Antón Santos, Ricardo  
425 Gómez Huelgas.

426

427 **SEMI-COVID-19 Registry Coordinating Center:** S & H Medical Science Service.

428

429 **Members of the SEMI-COVID-19 Group**

430

431 H. U. 12 de Octubre. Madrid

432 Paloma Agudo de Blas, Coral Arévalo Cañas, Blanca Ayuso, José Bascuñana Morejón, Samara  
433 Campos Escudero, María Carnevali Frías, Santiago Cossio Tejido, Borja de Miguel Campo, Carmen  
434 Díaz Pedroche, Raquel Diaz Simon, Ana García Reyne, Lucia Jorge Huerta, Antonio Lalueza Blanco,  
435 Jaime Laureiro Gonzalo, Carlos Lumbreras Bermejo, Guillermo Maestro de la Calle, Barbara Otero  
436 Perpiña, Diana Paredes Ruiz, Marcos Sánchez Fernández, Javier Tejada Montes.

437

438 H. U. Gregorio Marañón. Madrid

439 Laura Abarca Casas, Álvaro Alejandro de Oña, Rubén Alonso Beato, Leyre Alonso Gonzalo, Jaime  
440 Alonso Muñoz, Crhistian Mario Amodeo Oblitas, Cristina Ausín García, Marta Bacete Cebrián, Jesús  
441 Baltasar Corral, Maria Barrientos Guerrero, Alejandro Bendala Estrada, María Calderón Moreno,  
442 Paula Carrascosa Fernández, Raquel Carrillo, Sabela Castañeda Pérez, Eva Cervilla Muñoz, Agustín  
443 Diego Chacón Moreno, Maria Carmen Cuenca Carvajal, Sergio de Santos, Andrés Enríquez Gómez,  
444 Eduardo Fernández Carracedo, María Mercedes Ferreiro-Mazón Jenaro, Francisco Galeano Valle,  
445 Alejandra Garcia, Irene Garcia Fernandez-Bravo, María Eugenia García Leoni, Maria Gomez  
446 Antunez, Candela González San Narciso, Anthony Alexander Gurjian, Lorena Jiménez Ibáñez,  
447 Cristina Lavilla Olleros, Cristina Llamazares Mendo, Sara Luis García, Víctor Mato Jimeno, Clara  
448 Millán Nohales, Jesús Millán Núñez-Cortés, Sergio Moragón Ledesma, Antonio Muiño Miguez,  
449 Cecilia Muñoz Delgado, Lucía Ordieres Ortega, Susana Pardo Sánchez, Alejandro Parra Virto, María  
450 Teresa Pérez Sanz, Blanca Pinilla Llorente, Sandra Piqueras Ruiz, Guillermo Soria  
451 Fernández-Llamazares, María Toledano Macías, Neera Toledo Samaniego, Ana Torres do Rego,  
452 Maria Victoria Villalba Garcia, Gracia Villarreal, María Zurita Etayo.

453

454 Hospital Universitari de Bellvitge. L'Hospitalet de Llobregat

455 Xavier Corbella, Narcís Homs, Abelardo Montero, Jose María Mora-Luján, Manuel Rubio-Rivas.

456

457 H. U. La Paz-Cantoblanco-Carlos III. Madrid

458 Jorge Álvarez Troncoso, Francisco Arnalich Fernández, Francisco Blanco Quintana, Carmen Busca  
459 Arenzana, Sergio Carrasco Molina, Aranzazu Castellano Candalija, Germán Daroca Bengoa,  
460 Alejandro de Gea Grela, Alicia de Lorenzo Hernández, Alejandro Díez Vidal, Carmen Fernández



461 Capitán, Maria Francisca García Iglesias, Borja González Muñoz, Carmen Rosario Herrero Gil, Juan  
462 María Herrero Martínez, Víctor Hontañón, Maria Jesús Jaras Hernández, Carlos Lahoz, Cristina  
463 Marcelo Calvo, Juan Carlos Martín Gutiérrez, Monica Martinez Prieto, Elena Martínez Robles,  
464 Araceli Menéndez Saldaña, Alberto Moreno Fernández, Jose Maria Mostaza Prieto, Ana Noblejas  
465 Mozo, Carlos Manuel Oñoro López, Esmeralda Palmier Peláez, Marina Palomar Pampyn, Maria  
466 Angustias Quesada Simón, Juan Carlos Ramos Ramos, Luis Ramos Ruperto, Aquilino Sánchez  
467 Purificación, Teresa Sancho Bueso, Raquel Sorriguieta Torre, Clara Itziar Soto Abanedes, Yeray  
468 Untoria Tabares, Marta Varas Mayoral, Julia Vásquez Manau.

469

470 C. H. U. de Albacete. Albacete

471 Jose Luis Beato Pérez, Maria Lourdes Sáez Méndez.

472

473 Complejo Asistencial de Segovia. Segovia

474 Eva María Ferreira Pasos, Daniel Monge Monge, Alba Varela García.

475

476 H. U. Puerta de Hierro. Majadahonda

477 María Álvarez Bello, Ane Andrés Eisenhofer, Ana Arias Milla, Isolina Baños Pérez, Javier Bilbao  
478 Garay, Silvia Blanco Alonso, Jorge Calderón Parra, Alejandro Callejas Díaz, José María Camino  
479 Salvador, M<sup>a</sup> Cruz Carreño Hernández, Valentín Cuervas-Mons Martínez, Sara de la Fuente Moral,  
480 Miguel del Pino Jimenez, Alberto Díaz de Santiago, Itziar Diego Yagüe, Ignacio Donate Velasco, Ana  
481 María Duca, Pedro Durán del Campo, Gabriela Escudero López, Esther Expósito Palomo, Ana  
482 Fernández Cruz, Esther Fiz Benito, Andrea Fraile López, Amy Galán Gómez, Sonia García Prieto,  
483 Claudia García Rodríguez-Maimón, Miguel Ángel García Viejo, Javier Gómez Irusta, Edith Vanessa  
484 Gutiérrez Abreu, Isabel Gutiérrez Martín, Ángela Gutiérrez Rojas, Andrea Gutiérrez Villanueva,  
485 Jesús Herráiz Jiménez, Pedro Laguna del Estal, M<sup>a</sup> Carmen Máinez Sáiz, Cristina Martín Martín,  
486 María Martínez Urbistondo, Fernando Martínez Vera, Susana Mellor Pita, Patricia Mills Sánchez,  
487 Esther Montero Hernández, Alberto Mora Vargas, Cristina Moreno López, Alfonso Ángel-Moreno  
488 Maroto, Victor Moreno-Torres Concha, Ignacio Morrás De La Torre, Elena Muñoz Rubio, Ana  
489 Muñoz Gómez, Rosa Muñoz de Benito, Alejandro Muñoz Serrano, Jose María Palau Fayós, Ilduara  
490 Pintos Pascual, Antonio Ramos Martínez, Isabel Redondo Cánovas del Castillo, Alberto Roldán  
491 Montaud, Lucía Romero Imaz, Yolanda Romero Pizarro, Mónica Sánchez Santiuste, David Sánchez  
492 Órtiz, Enrique Sánchez Chica, Patricia Serrano de la Fuente, Pablo Tutor de Ureta, Ángela Valencia  
493 Alijo, Mercedes Valentín-Pastrana Aguilar, Juan Antonio Vargas Núñez, Jose Manuel Vázquez  
494 Comendador, Gema Vázquez Contreras, Carmen Vizoso Gálvez.

495

496 H. Miguel Servet. Zaragoza

497 Gonzalo Acebes Repiso, Uxua Asín Samper, María Aranzazu Caudevilla Martínez, José Miguel  
498 García Bruñén, Rosa García Fenoll, Jesús Javier González Igual, Laura Letona Giménez, Mónica  
499 Llorente Barrio, Luis Sáez Comet.

500

501 H. U. La Princesa. Madrid

502 María Aguilera García, Ester Alonso Monge, Jesús Álvarez Rodríguez, Claudia Alvarez Varela,  
503 Miquel Berniz Gòdia, Marta Briega Molina, Marta Bustamante Vega, Jose Curbelo, Alicia de las  
504 Heras Moreno, Ignacio Descalzo Godoy, Alexia Constanza Espiño Alvarez, Ignacio Fernández  
505 Martín-Caro, Alejandra Franquet López-Mosteiro, Gonzalo Galvez Marquez, María J. García Blanco,  
506 Yaiza García del Álamo Hernández, Clara García-Rayó Encina, Noemí Gilabert González, Carolina  
507 Guillermo Rodríguez, Nicolás Labrador San Martín, Manuel Molina Báez, Carmen Muñoz Delgado,  
508 Pedro Parra Caballero, Javier Pérez Serrano, Laura Rabes Rodríguez, Pablo Rodríguez Cortés, Carlos  
509 Rodríguez Franco, Emilia Roy-Vallejo, Monica Rueda Vega, Aresio Sancha Lloret, Beatriz Sánchez  
510 Moreno, Marta Sanz Alba, Jorge Serrano Ballester, Alba Somovilla, Carmen Suarez Fernández,  
511 Macarena Vargas Tirado, Almudena Villa Marti.

512

513 H. U. de A Coruña. A Coruña

514 Alicia Alonso Álvarez, Olaya Alonso Juarros, Ariadna Arévalo López, Carmen Casariego Castiñeira,  
515 Ana Cerezales Calviño, Marta Contreras Sánchez, Ramón Fernández Varela, Santiago J. Freire  
516 Castro, Ana Padín Trigo, Rafael Prieto Jarel, Fátima Raad Varea, Laura Ramos Alonso, Francisco  
517 Javier Sanmartín Pensado, David Vieito Porto.

518

519 H. Clínico San Carlos. Madrid

520 Inés Armenteros Yeguas, Javier Azaña Gómez, Julia Barrado Cuchillo, Irene Burruezo López, Noemí  
521 Cabello Clotet, Alberto E. Calvo Elías, Elpidio Calvo Manuel, Carmen María Cano de Luque,  
522 Cynthia Chocron Benbunan, Laura Dans Vilan, Ester Emilia Dubon Peralta, Vicente Estrada Pérez,  
523 Santiago Fernandez-Castelao, Marcos Oliver Fragiél Saavedra, José Luis García Klepzig, Maria del  
524 Rosario Iguarán Bermúdez, Esther Jaén Ferrer, Rubén Ángel Martín Sánchez, Manuel Méndez  
525 Bailón, Maria José Nuñez Orantos, Carolina Olmos Mata, Eva Orviz García, David Oteo Mata,  
526 Cristina Outon González, Juncal Perez-Somarriba, Pablo Pérez Mateos, Maria Esther Ramos Muñoz,  
527 Xabier Rivas Regaira, Iñigo Sagastagoitia Fornie, Alejandro Salinas Botrán, Miguel Suárez Robles,  
528 Maddalena Elena Urbano, Miguel Villar Martínez.

529

530 H. Infanta Sofía. S. S. de los Reyes

531 Rafael del Castillo Cantero, Rebeca Fuerte Martínez, Arturo Muñoz Blanco, José Francisco Pascual  
532 Pareja, Isabel Perales Fraile, Isabel Rábago Lorite, Llanos Soler Rangel, Inés Suárez García, Jose Luis  
533 Valle López.

534

535 Hospital Royo Villanova. Zaragoza

536 Nicolás Alcalá Rivera, Anxela Crestelo Vieitez, Esther del Corral, Jesús Díez Manglano, Isabel Fiteni  
537 Mera, Maria del Mar Garcia Andreu, Martin Gerico Aseguinolaza, Claudia Josa Laorden, Raul  
538 Martinez Murgui, Marta Teresa Matía Sanz.

539

540 H. Moisès Broggi. Sant Joan Despí

541 Judit Aranda Lobo, Jose Loureiro Amigo, Isabel Oriol Bermúdez, Melani Pestaña Fernández, Nicolas  
542 Rhyman, Nuria Vázquez Piqueras.

543

544 Hospital Universitario Dr. Peset. Valencia

545 Juan Alberto Aguilera Ayllón, Arturo Artero, María del Mar Carmona Martín, María José Fabiá  
546 Valls, Maria de Mar Fernández Garcés, Ana Belén Gómez Belda, Ian López Cruz, Manuel Madrazo  
547 López, Elisabet Mateo Sanchis, Jaume Micó Gandia, Laura Piles Roger, Adela Maria Pina Belmonte,  
548 Alba Viana García.

549

550 Hospital Clínico de Santiago. Santiago de Compostela

551 Maria del Carmen Beceiro Abad, Maria Aurora Freire Romero, Sonia Molinos Castro, Emilio Manuel  
552 Paez Guillan, María Pazo Nuñez, Paula Maria Pesqueira Fontan.

553

554 H. Nuestra Señora del Prado. Talavera de la Reina

555 Sonia Casallo Blanco, Jeffrey Oskar Magallanes Gamboa.

556

557 H. U. Ramón y Cajal. Madrid

558 Luis Fernando Abrego Vaca, Ana Andréu Arnanz, Octavio Arce García, Marta Bajo González,  
559 Pablo Borque Sanz, Alberto Cozar Llisto, Sonia de Pedro Baena, Beatriz Del Hoyo Cuenda, María  
560 Alejandra Gamboa Osorio, Isabel García Sánchez, Andrés González García, Oscar Alberto López  
561 Cisneros, Miguel Martínez Lacalzada, Borja Merino Ortiz, Jimena Rey-García, Elisa Riera González,  
562 Cristina Sánchez Díaz, Grisell Starita Fajardo, Cecilia Suárez Carantoña, Adrian Viteri Noel,  
563 Svetlana Zhilina Zhilina.

564

565 H. U. Infanta Cristina. Parla

566 Juan Miguel Antón Santos, Ana Belén Barbero Barrera, Coralia Bueno Muiño, Ruth Calderón  
567 Hernaiz, Irene Casado Lopez, José Manuel Casas Rojo, Andrés Cortés Troncoso, Mayte de Guzmán  
568 García-Monge, Francesco Deodati, Gonzalo García Casasola Sánchez, Elena Garcia Guijarro, Davide  
569 Luordo, María Mateos González, Jose A Melero Bermejo, Lorea Roteta García, Elena Sierra Gonzalo,  
570 Javier Villanueva Martínez.

571

572 H. de Cabueñes. Gijón

573 Ana María Álvarez Suárez, Carlos Delgado Vergés, Rosa Fernandez-Madera Martínez, Eva Fonseca  
574 Aizpuru, Alejandro Gómez Carrasco, Cristina Helguera Amezua, Juan Francisco López Caleyá,  
575 María del Mar Martínez López, Aleida Martínez Zapico, Carmen Olabuenaga Iscar, María Luisa  
576 Taboada Martínez, Lara María Tamargo Chamorro.

577

578 Hospital de Urduliz Alfredo Espinosa. Urdúliz

579 María Aparicio López, Asier Aranguren Arostegui, Paula Arriola Martínez, Gorka Arroita Gonzalez,  
580 M<sup>a</sup> Soledad Azcona Losada, Miriam García Gómez, Eduardo Garcia Lopez, Amalur Iza Jiménez,  
581 Alazne Lartategi Iraurgi, Esther Martinez Becerro, Itziar Oriñuela González, Isabel María Portales  
582 Fernández, Pablo Ramirez Sánchez, Beatriz Ruiz Estévez, Cristian Vidal Núñez.

583

584 H. Virgen de la Salud. Toledo

585 Ana Maria Alguacil Muñoz, Marta Blanco Fernández, Veronica Cano, Ricardo Crespo Moreno,  
586 Fernando Cuadra Garcia-Tenorio, Blanca Díaz-Tendero Nájera, Raquel Estévez González, María Paz  
587 García Butenegro, Alberto Gato Díez, Verónica Gómez Caverzaschi, Piedad María Gómez Pedraza,  
588 Julio González Moraleja, Raúl Hidalgo Carvajal, Patricia Jiménez Aranda, Raquel Labra González,  
589 Áxel Legua Caparachini, Pilar Lopez Castañeyra, Agustín Lozano Ancin, Jose Domingo Martin  
590 Garcia, Cristina Morata Romero, María Jesús Moya Saiz, Helena Moza Moríño, Gemma Muñoz  
591 Nicolás, Enriqueta Muñoz Platon, Filomena Oliveri, Elena Ortiz Ortiz, Raúl Perea Rafael, Pilar  
592 Redondo Galán, María Antonia Sepulveda Berrocal, Vicente Serrano Romero de Ávila, Pilar  
593 Toledano Sierra, Yamilex Urbano Aranda, Jesús Vázquez Clemente, Carmen Yera Bergua.

594

595 Hospital Regional Universitario de Málaga. Málaga

596 M<sup>a</sup> Mar Ayala Gutiérrez, Rosa Bernal López, José Bueno Fonseca, Verónica Andrea Buonaiuto, Luis  
597 Francisco Caballero Martínez, Lidia Cobos Palacios, Clara Costo Muriel, Francis de Windt, Ana  
598 Teresa Fernandez-Truchaud Christophel, Paula García Ocaña, Ricardo Gómez Huelgas, Javier  
599 Gorospe García, Maria Dolores López Carmona, Pablo López Quirantes, Almudena López Sampalo,  
600 Elizabeth Lorenzo Hernández, Juan José Mancebo Sevilla, Jesica Martin Carmona, Luis Miguel  
601 Pérez-Belmonte, Araceli Pineda Cantero, Michele Ricci, Jaime Sanz Cánovas

602

603 H. Santa Marina. Bilbao

604 Maria Areses Manrique, Ainara Coduras Erdozain, Ane Elbire Labirua-Iturburu Ruiz.

605

606 Hospital HLA Moncloa. Madrid

607 Teresa Garcia Delange, Isabel Jimenez Martinez, Carmen Martinez Cilleros, Nuria Parra Arribas.

608

609 H. del Henares. Coslada

610 Jesús Ballano Rodríguez-Solís, Luis Cabeza Osorio, María del Pilar Fidalgo Montero, M<sup>a</sup> Isabel  
611 Fuentes Soriano, Erika Esperanza Lozano Rincon, Ana Martín Hermida, Jesus Martinez Carrilero,  
612 Jose Angel Pestaña Santiago, Manuel Sánchez Robledo, Patricia Sanz Rojas, Nahum Jacobo Torres  
613 Yebes, Vanessa Vento.

614

615 H. U. Torre vieja. Torre vieja

616 Julio César Blázquez Encinar, Joaquín Fernández López-Cuervo.

617

618 H. U. La Fe. Valencia

619 Dafne Cabañero, María Calabuig Ballester, Pascual Císcar Fernández, Ricardo Gil Sánchez, Marta  
620 Jiménez Escrig, Cristina Marín Amela, Laura Parra Gómez, Carlos Puig Navarro, José Antonio  
621 Todolí Parra.

622

623 H. San Pedro. Logroño

624 Diana Alegre González, Irene Ariño Pérez de Zabalza, Sergio Arnedo Hernández, Jorge Collado  
625 Sáenz, Beatriz Dendariena, Marta Gómez del Mazo, Iratxe Martínez de Narvajas Urra, Sara Martínez  
626 Hernández, Estela Menendez Fernández, Jose Luís Peña Somovilla, Elisa Rabadán Pejenaute.

627

628 Hospital Universitario Ntra Sra Candelaria. Santa Cruz de Tenerife

629 Lucy Abella, Andrea Afonso Díaz, Selena Gala Aguilera Garcia, Marta Bethencourt Feria, Eduardo  
630 Mauricio Calderón Ledezma, Sara Castaño Perez, Guillermo Castro Gainett, José Manuel del Arco  
631 Delgado, Joaquín Delgado Casamayor, Diego Garcia Silvera, Alba Gómez Hidalgo, Marcelino  
632 Hayek Peraza, Carolina Hernández Carballo, Rubén Hernández Luis, Francisco Javier Herrera  
633 Herrera, Maria del Mar Lopez Gamez, Julia Marfil Daza, María José Monedero Prieto, María Blanca  
634 Monereo Muñoz, María de la Luz Padilla Salazar, Daniel Rodríguez Díaz, Alicia Tejera, Laura Torres  
635 Hernández.

636

637 H. U. San Juan de Alicante. San Juan de Alicante

638 David Balaz, David Bonet Tur, Pedro Jesús Esteve Atiénzar, Carles García Cervera, David Francisco  
639 García Núñez, Vicente Giner Galvañ, Angie Gómez Uranga, Javier Guzmán Martínez, Isidro  
640 Hernández Isasi, Lourdes Lajara Villar, Juan Manuel Núñez Cruz, Sergio Palacios Fernández, Juan  
641 Jorge Peris García, Andrea Riaño Pérez, José Miguel Seguí Ripoll, Philip Wikman-Jorgensen.

642

643 H. U. San Agustin. Avilés

644 Andrea Álvarez García, Víctor Arenas García, Alba Barragán Mateos, Demelsa Blanco Suárez, María  
645 Caño Rubia, Jaime Casal Álvarez, David Castrodá Copa, José Ferreiro Celeiro, Natalia García  
646 Arenas, Raquel García Noriega, Joaquin Llorente García, Irene Maderuelo Riesco, Paula Martinez  
647 Garcia, Maria Jose Menendez Calderon, Diego Eduardo Olivo Aguilar, Marta Nataya Solís  
648 Marquínez, Luis Trapiella Martínez, Andrés Astur Treceño García, Juan Valdés Bécares.

649

650 H. de Mataró. Mataró

651 Raquel Aranega González, Ramon Boixeda, Carlos Lopera Mármol, Marta Parra Navarro, Ainhoa  
652 Rex Guzmán, Aleix Serrallonga Fustier.

653

654 H. U. Son Llàtzer. Palma de Mallorca

655 Andrés de la Peña Fernández, Almudena Hernández Milián.

656

657 H. Juan Ramón Jiménez. Huelva

658 Francisco Javier Bejarano Luque, Francisco Javier Carrasco-Sánchez, Mercedes de Sousa Baena,  
659 Jaime Díaz Leal, Aurora Espinar Rubio, Maria Franco Huertas, Juan Antonio García Bravo,  
660 Andrés Gonzalez Macías, Encarnación Gutiérrez Jiménez, Alicia Hidalgo Jiménez, Constantino  
661 Lozano Quintero, Carmen Mancilla Reguera, Francisco Javier Martínez Marcos, Francisco Muñoz  
662 Beamud, Maria Perez Aguilera, Alícia Perez Jiménez, Virginia Rodríguez Castaño, Alvaro Sánchez  
663 de Alcazar del Río, Leire Toscano Ruiz.

664

665 H. U. Reina Sofía. Córdoba

666 Antonio Pablo Arenas de Larriva, Pilar Calero Espinal, Javier Delgado Lista, María Jesús Gómez  
667 Vázquez, Jose Jiménez Torres, Laura Martín Piedra, Javier Pascual Vinagre, María Elena Revelles  
668 Vílchez, Juan Luis Romero Cabrera, José David Torres Peña.

669

670 Hospital Infanta Margarita. Cabra

671 María Esther Guisado Espartero, Lorena Montero Rivas, Maria de la Sierra Navas Alcántara,  
672 Raimundo Tirado-Miranda.

673

674 H. U. Virgen de las Nieves. Granada

675 Pablo Conde Baena, Joaquin Escobar Sevilla, Laura Gallo Padilla, Patricia Gómez Ronquillo, Pablo  
676 González Bustos, María Navío Botías, Jessica Ramírez Taboada, Mar Rivero Rodríguez.

677

678 Hospital Costa del Sol. Marbella

679 Victoria Agustín Bandera, María Dolores Martín Escalante.

680

681 Complejo Asistencial Universitario de León. León

682 Rosario Maria García Díez, Manuel Martin Regidor, Angel Luis Martínez Gonzalez, Alberto Muela  
683 Molinero, Raquel Rodríguez Díez, Beatriz Vicente Montes.

684

685 Hospital Marina Baixa. Villajoyosa

686 Javier Ena, Jose Enrique Gómez Segado.

687

688 C. H. U. de Ferrol. Ferrol

689 Hortensia Alvarez Diaz, Tamara Dalama Lopez, Estefania Martul Pego, Carmen Mella Pérez, Ana  
690 Pazos Ferro, Sabela Sánchez Trigo, Dolores Suarez Sambade, Maria Trigas Ferrin, Maria del Carmen  
691 Vázquez Friol, Laura Vilariño Maneiro.

692

693 Hospital Torrecárdenas. Almería

694 Luis Felipe Díez García, Iris El Attar Acedo, Bárbara Hernandez Sierra, Carmen Mar Sánchez Cano.

695

696 Hospital Clinic Barcelona. Barcelona

697 Júlia Calvo Jiménez, Aina Capdevila Reniu, Irene Carbonell De Boulle, Emmanuel Coloma Bazán,  
698 Joaquim Fernández Solà, Cristina Gabara Xancó, Joan Ribot Grabalosa, Olga Rodríguez Núñez.

699

700 Hospital del Tajo. Aranjuez

701 Ruth Gonzalez Ferrer, Raquel Monsalvo Arroyo.

702

703 Hospital Insular de Gran Canaria. Las Palmas G. C.

704 Marina Aroza Espinar, Jorge Orihuela Martín, Carlos Jorge Ripper, Selena Santana Jiménez.

705

706 H. U. Severo Ochoa. Leganés

707 Yolanda Casillas Viera, Lucía Cayuela Rodríguez, Carmen de Juan Alvarez, Gema Flox Benitez,  
708 Laura García Escudero, Juan Martin Torres, Patricia Moreira Escriche, Susana Plaza Canteli, M  
709 Carmen Romero Pérez.

710

- 711 Hospital Alto Guadalquivir. Andújar  
712 Begoña Cortés Rodríguez.  
713
- 714 Hospital Valle del Nalón. Riaño (Langreo)  
715 Sara Fuente Cosío, César Manuel Gallo Álvaro, Julia Lobo García, Antía Pérez Piñeiro.  
716
- 717 H. Francesc de Borja. Gandia  
718 Alba Camarena Molina, Simona Cioaia, Anna Ferrer Santolalia, José María Frutos Pérez, Eva Gil  
719 Tomás, Leyre Jorquer Vidal, Marina Llopis Sanchis, M Ángeles Martínez Pascual, Alvaro Navarro  
720 Batet, Mari Amparo Perea Ribis, Ricardo Peris Sanchez, José Manuel Querol Ribelles, Silvia  
721 Rodríguez Mercadal, Ana Ventura Esteve.  
722
- 723 H. U. del Vinalopó. Elche  
724 Francisco Amorós Martínez, Erika Ascuña Vásquez, Jose Carlos Escribano Stablé, Adriana  
725 Hernández Belmonte, Ana Maestre Peiró, Raquel Martínez Goñi, M. Carmen Pacheco Castellanos,  
726 Bernardino Soldan Belda, David Vicente Navarro.  
727
- 728 H. G. U. de Castellón. Castellón de la Plana  
729 Jorge Andrés Soler, Marián Bennasar Remolar, Alejandro Cardenal Álvarez, Daniela Díaz Carlotti,  
730 María José Esteve Gimeno, Sergio Fabra Juana, Paula García López, María Teresa Guinot Soler,  
731 Daniela Palomo de la Sota, Guillem Pascual Castellanos, Ignacio Pérez Catalán, Celia Roig Martí,  
732 Paula Rubert Monzó, Javier Ruiz Padilla, Nuria Tornador Gaya, Jorge Usó Blasco.  
733
- 734 C. H. U. de Badajoz. Badajoz  
735 Rafael Aragon Lara, Inmaculada Cimadevilla Fernandez, Juan Carlos Cira García, Gema Maria  
736 García García, Julia Gonzalez Granados, Beatriz Guerrero Sánchez, Francisco Javier Monreal  
737 Periañez, Maria Josefa Pascual Perez.  
738
- 739 H. Santa Bárbara. Soria  
740 Marta Leon Tellez.  
741
- 742 C. A. U. de Salamanca. Salamanca  
743 Gloria María Alonso Claudio, Víctor Barreales Rodríguez, Cristina Carbonell Muñoz, Adela Carpio  
744 Pérez, María Victoria Coral Orbes, Daniel Encinas Sánchez, Sandra Inés Revuelta, Miguel Marcos  
745 Martín, José Ignacio Martín González, José Ángel Martín Oterino, Leticia Moralejo Alonso, Sonia  
746 Peña Balbuena, María Luisa Pérez García, Ana Ramon Prados, Beatriz Rodríguez-Alonso, Ángela  
747 Romero Alegría, Maria Sanchez Ledesma, Rosa Juana Tejera Pérez.  
748
- 749 H. U. Quironsalud Madrid. Pozuelo de Alarcón (Madrid)  
750 Pablo Guisado Vasco, Ana Roda Santacruz, Ana Valverde Muñoz.  
751
- 752 H. U. de Canarias. Santa Cruz de Tenerife

- 753 Julio Cesar Alvisa Negrin, José Fernando Armas González, Lourdes González Navarrete, Iballa  
754 Jiménez, María Candelaria Martín González, Esther Martín Ponce, Miguel Nicolas Navarrete Lorite,  
755 Paula Ortega Toledo, Onán Pérez Hernández, Alina Pérez Ramírez.  
756  
757 H. U. del Sureste. Arganda del Rey  
758 Jon Cabrejas Ugartondo, Ana Belén Mancebo Plaza, Arturo Noguerado Asensio, Bethania Pérez  
759 Alves, Natalia Vicente López.  
760  
761 H. de Poniente. Almería  
762 Juan Antonio Montes Romero, Encarna Sánchez Martín, Jose Luis Serrano Carrillo de Albornoz,  
763 Manuel Jesus Soriano Pérez.  
764  
765 H. Parc Tauli. Sabadell  
766 Francisco Epelde, Isabel Torrente  
767  
768 H. San Pedro de Alcántara. Cáceres  
769 Angela Agea Garcia, Javier Galán González, Luis Gámez Salazar, Eva Garcia Sardon, Antonio  
770 González Nieto, Itziar Montero Díaz, Selene Núñez Gaspar, Alvaro Santaella Gomez.  
771  
772 H. de Pozoblanco. Pozoblanco  
773 José Nicolás Alcalá Pedrajas, Antonia Márquez García, Inés Vargas.  
774  
775 H. Virgen de los Lirios. Alcoy (Alicante)  
776 M<sup>a</sup> José Esteban Giner.  
777  
778 Hospital Doctor José Molina Orosa. Arrecife (Lanzarote)  
779 Virginia Herrero García, Berta Román Bernal.  
780  
781 Hospital de Palamós. Palamós  
782 Maricruz Almendros Rivas, Miquel Hortos Alsina, Anabel Martin-Urda Diez-Canseco.  
783  
784 Hospital Clínico Universitario de Valladolid. Valladolid  
785 Xjoylin Teresita Egües Torres, Sara Gutiérrez González, Cristina Novoa Fernández, Pablo Tellería  
786 Gómez.  
787  
788 H. U. Puerta del Mar. Cádiz  
789 José Antonio Girón González, Susana Fabiola Pascual Perez, Cristina Rodríguez Fernández-Viagas,  
790 Maria José Soto Cardenas.  
791  
792 Hospital de Montilla. Montilla  
793 Ana Cristina Delgado Zamorano, Beatriz Gómez Marín, Adrián Montaña Martínez, Jose Luis  
794 Zambrana García.



795

796 H. Infanta Elena. Huelva

797 María Gloria Rojano Rivero.

798

799 H. Virgen del Mar. Madrid

800 Tamar Capel Astrua, Paola Tatiana Garcia Giraldo, Maria Jesus Gonzalez Juarez, Victoria Marquez

801 Fernandez, Ada Viviana Romero Echevarry.

802

803 Hospital do Salnes. Vilagarcía de Arousa

804 Vanesa Alende Castro, Ana María Baz Lomba, Ruth Brea Aparicio, Marta Fernandez Morales,

805 Jesus Manuel Fernandez Villar, Maria Teresa Lopez Monteagudo, Cristina Pérez García, Lorena

806 María Rodríguez Ferreira, Diana Sande Llovo, Maria Begoña Valle Feijoo.

807

808